



Public Notice is hereby given of a Regular Council Meeting for Public Hearings being held on:

Monday, November 21, 2011 - 7 p.m.

**Council Chambers, 1st Floor
Richmond City Hall
6911 No. 3 Road
Richmond, BC V6Y 2C1
www.richmond.ca**

OPENING STATEMENT

Page

1 1. Zoning Amendment Bylaw 8810 (RZ 09-467609)

[TO VIEW eREPORT CLICK HERE](#)

See Page **PH-1** of the Public Hearing agenda for full hardcopy report

Location: 9500 Alberta Road

Applicant: Ching-Ho Chen

Purpose: To rezone the subject property from “Single Detached (RS1/F)” to “Residential Child Care (RCC)”, to permit a licensed child care facility in the existing two-storey residential house to accommodate a maximum of 16 children.

First Reading: Tuesday, October 11, 2011

Order of Business:

1. Presentation from the applicant.
2. Acknowledgement of written submissions received by the City Clerk since first reading.
3. Submissions from the floor.

Council Consideration:

1. Action on Second & Third Readings of Bylaw 8810.

☐

2. Adoption of Bylaw 8810.

☐

Page

15 2. Official Community Plan Amendment Bylaw 8820 and Zoning Amendment Bylaw 8821 (RZ 10-531707)

TO VIEW eREPORT CLICK HERE

See Page **PH-15** of the Public Hearing agenda for full hardcopy report

Location: 9220 No. 3 Road

Applicant: Studio Elemental Design

Purpose of OCP Amendment Bylaw:

To redesignate 9220 No. 3 Road from “Low-Density Residential” to “Commercial” in the Specific Land Use Map of Attachment 2 to Schedule 1 of Official Community Plan Bylaw 7100.

Purpose of Zoning Amendment Bylaw:

To discharge Land Use Contract 078 from the southern portion of 9220 No. 3 Road and amend the Local Commercial (CL) zoning district and rezone the subject property from “Land Use Contract 078” and “Single Detached (RS1/E)” to “Local Commercial (CL)”, to permit the existing veterinary service facility to redevelop on the subject site.

First Reading: Tuesday, October 11, 2011

Order of Business:

1. Presentation from the applicant.
2. Acknowledgement of written submissions received by the City Clerk since first reading.
3. Submissions from the floor.

Council Consideration:

1. Action on Second & Third Readings of Bylaws 8820 and 8821.



ADJOURNMENT



City of Richmond
Planning and Development Department

Report to Committee

To: Planning Committee

Date: September 12, 2011

From: Brian J. Jackson, MCIP
Director of Development

File: RZ 09-467609

Re: Application by Ching-Ho Chen for Rezoning at 9500 Alberta Road from Single Detached (RS1/F) to Residential Child Care (RCC)

Staff Recommendation

That Bylaw No. 8810, for the rezoning of 9500 Alberta Road from "Single Detached (RS1/F)" to "Residential Child Care (RCC)", be introduced and given first reading.

Brian J. Jackson, MCIP
Director of Development

SB:blg
Att.

FOR ORIGINATING DEPARTMENT USE ONLY		
ROUTED TO:	CONCURRENCE	CONCURRENCE OF GENERAL MANAGER
Community Social Services	Y <input checked="" type="checkbox"/> N <input type="checkbox"/>	

Staff Report

Origin

Ching-Ho Chen has applied to the City of Richmond for permission to rezone 9500 Alberta Road (**Attachment 1**) from “Single Detached (RS1/F)” to “Residential Child Care (RCC)” to allow for a licensed child care facility in the existing two-storey residential house to accommodate a maximum of 16 children (**Attachment 2**).

Findings of Fact

The subject area is characterized by adjacent Anderson Elementary School, and nearby single-family homes, townhouse development, and moving west towards Garden City Road, Garden City Community Park and low rise to high-rise development. The rezoning application proposal to provide childcare facilities within an existing single-family home is consistent with the intention of the area plan.

A Development Application Data Sheet providing details about the rezoning proposal is attached (**Attachment 3**).

The Existing single-family home currently accommodates a small group childcare facility. Rezoning is required to accommodate the proposed 16 children. A childcare program for up to 10 children is permitted under the existing single detached zone.

A Servicing Agreement is not required. The City constructed frontage improvements along Alberta Road through the Development Cost Charge Program. Any servicing adjustments can be completed through the future Building Permit process.

Surrounding Development

Development surrounding the subject McLennan North Sub-Area (City Centre Area) site is as follows:

- To the north, across Alberta Road, is a 48-unit townhouse development fronting onto Alder Street and Alberta Road, zoned “Town Housing (ZT30) – North McLennan (City Centre)”, designated Residential Area 3 in the McLennan North Sub-Area Plan and General Urban T4 in the City Centre Area Plan (CCAP);
- To the east, is an existing single-family lot owned by the Richmond School District, zoned “Single Detached (RS1/F)”, designated Residential Area 3 in the McLennan North Sub-Area Plan and General Urban T4 in the CCAP; and
- To the east, west and south, is Anderson Elementary School, zoned “School & Institutional Use (SI)”, designated School in the McLennan North Sub-Area Plan and CCAP. The subject site is a single privately owned lot surrounded by school district property.

Related Policies & Studies

Official Community Plan (OCP)

The Official Community Plan (OCP) Generalized Land Use Map designates the subject site Neighbourhood Residential, which supports childcare facilities. The proposed land use is consistent with the plan.

City Centre Area Plan (CCAP)

The CCAP designates the subject site General Urban T4 in the Generalized Land Use Map. The designation supports a range of density and use. The proposed land use is consistent with the plan.

McLennan North Sub-Area Plan

The site is designated Residential Area 3 in the McLennan North Sub-Area Land Use Map (**Attachment 4**). The area plan specifies a base density of 0.65 base FAR.

McLennan North Sub-Area Plan policies specifically encourage the provision of childcare facilities in the sub-area that comply with the Provincial Childcare Regulations.

The proposed land use is consistent with the plan. The proposal provides sought after childcare spaces in an existing single-family home. To take advantage of the base density, future redevelopment will require a larger lot assembly to accommodate the additional floor area.

OCP Aircraft Noise Sensitive Development Policy

The subject site is located within Area 4 of the OCP Aircraft Noise Sensitive Development Policy, which permits consideration of all aircraft noise sensitive land use types. The policy also requires registration of a restrictive covenant on Title, noise mitigation to be incorporated within new buildings and associated acoustic report.

With the continued use of an existing building, registration of an aircraft noise sensitive use restrictive covenant is not sought at this time. This will be addressed at the time of significant redevelopment of the site.

Floodplain Management

Flood plain management, including flood plain construction level criteria, is provided in the Flood Plain Designation and Protection Bylaw 8204 and the approved City Centre Area Plan.

With the continued use of an existing building, registration of a flood plain covenant is not sought at this time. This will be addressed at the time of significant redevelopment of the site.

2009-2016 Richmond Child Care Needs Assessment and Strategy

The proposal addresses the childcare needs for infants and toddler in the City Centre planning area as identified in the 2009-2016 Richmond Child Care Needs Assessment and Strategy. The report identifies the estimated additional childcare spaces needed by December 1, 2016 broken down by planning area and the different categories of childcare needed. The infant, toddler and 3-5 year childcare spaces proposed by the applicant and needs in the City Centre planning area are summarized in the table below:

	Proposed	City Centre Need
Group (under 18 months)	16 (under 3 years)	25
Group (18 months – 2 years)		63
Group (3 – 5 years)	None at this time	99

Consultation and Public Input

Vancouver Coastal Health

Child Care facilities operate under the jurisdiction of the Provincial Government. In Richmond, childcare licensing is the responsibility of Vancouver Coastal Health. Accordingly, the application was referred to Vancouver Coastal Health childcare facility licensing staff for review. Vancouver Coastal Health child care facility licensing staff review applications on a case by case basis and have confirmed that they have no concerns with the subject proposal.

Public Input

The development application process to date has included the installation of informational development application signage on the site, and hand delivery of a notification letter to the adjacent neighbours. No public input has been received regarding the subject application. The Public Hearing will include notification to neighbours and local newspaper advertising.

In March 2009, the owners approached the neighbours and hand delivered a letter to the nine (9) townhouse units directly across Alberta Road, and the adjacent single-family home to the east, advising the neighbours of their rezoning application.

Staff Comments

Project Description

The applicant proposes to expand the existing licensed childcare to accommodate 16 children, aged 0 to 36 months, inside the existing two-storey single-family home building. To accommodate the additional children, interior alterations are proposed, along with a new fire suppression sprinkler system, and a new surface parking area in front of the existing home. Separate Building Permit and Building Code Alternative Solution applications are required as discussed later in the report.

Analysis

Land Use

As noted previously, the proposed development complies the intent of the OCP, and the proposed provision of childcare spaces supports the 2009-2016 Richmond Child Care Needs Assessment and Strategy.

“8.13 Residential Child Care (RCC)” Standard Zone

The Residential Child Care (RCC) standard residential zone provides for childcare facilities with single detached housing as a secondary use. For the subject site, the new zone is similar to the existing Single Detached (RS1/F), with the following exceptions:

- Increased density is permitted. The site of the subject lot results in an additional approximately 51 m² (approximately 550 ft²) of permitted building area. However, the proposed child care facility is accommodated in the existing single-family home, with no redevelopment proposed;
- A lower maximum lot coverage of 40% is permitted. The proposal complies with an approximate 21% existing lot coverage; and
- A childcare facility for 16 children is permitted.

Building Code Compliance

The applicant has been working with staff and a consultant to address the issue of Building Code compliance, which is a challenge for a small day care operator. Day Care use requires a high level of fire and life safety protection. The existing two-storey wood frame single-family house does not meet those requirements for a day care for 16 children. The Building Code does however permit a registered professional with expertise in life safety issues to propose an “alternative solution” to ensure that the existing single family dwelling can be safely used and not compromise the life safety, fire protection or health requirements of the BC Building Code. The City has accepted the project Fire Protection Engineer’s proposed alternative solution through a separate Building Approvals application (EQ 10-554840). The alternate solution proposes upgrades including restricting the child care use to the ground floor level; separation between the residential and childcare uses; and a sprinkler system. The upgrades identified in the Building Code alternative solution and associated Building Permit must be complete prior to the child care facility being permitted to increase its capacity.

Off-Street Parking

The Richmond Zoning Bylaw requires that off-street parking be provided for the residential use and child care use based on the number of staff required and the number of children in care. Seven (7) parking spaces are required: two (2) for the upstairs residence, two (2) for parents, and three (3) for staff. The applicant will accommodate the required parking spaces on-site in a new surface parking area in front of the existing building.

The parking layout includes a central driveway, curb stops in the parking spaces, a new low masonry fence along the front property line to provide separation and protection to the Alberta Road sidewalk, along with solid wood fencing screening for the parking area. Provision of a landscape security for the fencing is a requirement of the zoning text amendment.

The parking spaces adjacent to the front property line will be reserved with signage for staff, and the parking space in the existing carport will be reserved with signage for the residents. Staff and residents are expected to be familiar with the parking area layout and manoeuvring associated with these parking spaces, which are more difficult to manoeuvre into and out of than the others. Transportation staff is supportive of the proposal.

Servicing Capacity

With the continued use of an existing building, engineering capacity analyses for the water, sanitary, and storm infrastructure was not required.

Financial Impact

No financial impact to the City is anticipated.

Conclusion

The proposal to expand the childcare facility to accommodate 16 children under the age of 3 years supports the community by helping to address the childcare needs in the City Centre planning area. The lot is well situated for a childcare facility, adjacent to an elementary school and close to a community park. Staff recommends support of this rezoning application.



Sara Badyal, M. Arch, MCIP
Planner 2 (Urban Design)

Attachment 1: Location Map and 2009 Aerial Photo of 9500 Alberta Road

Attachment 2: Development Plans

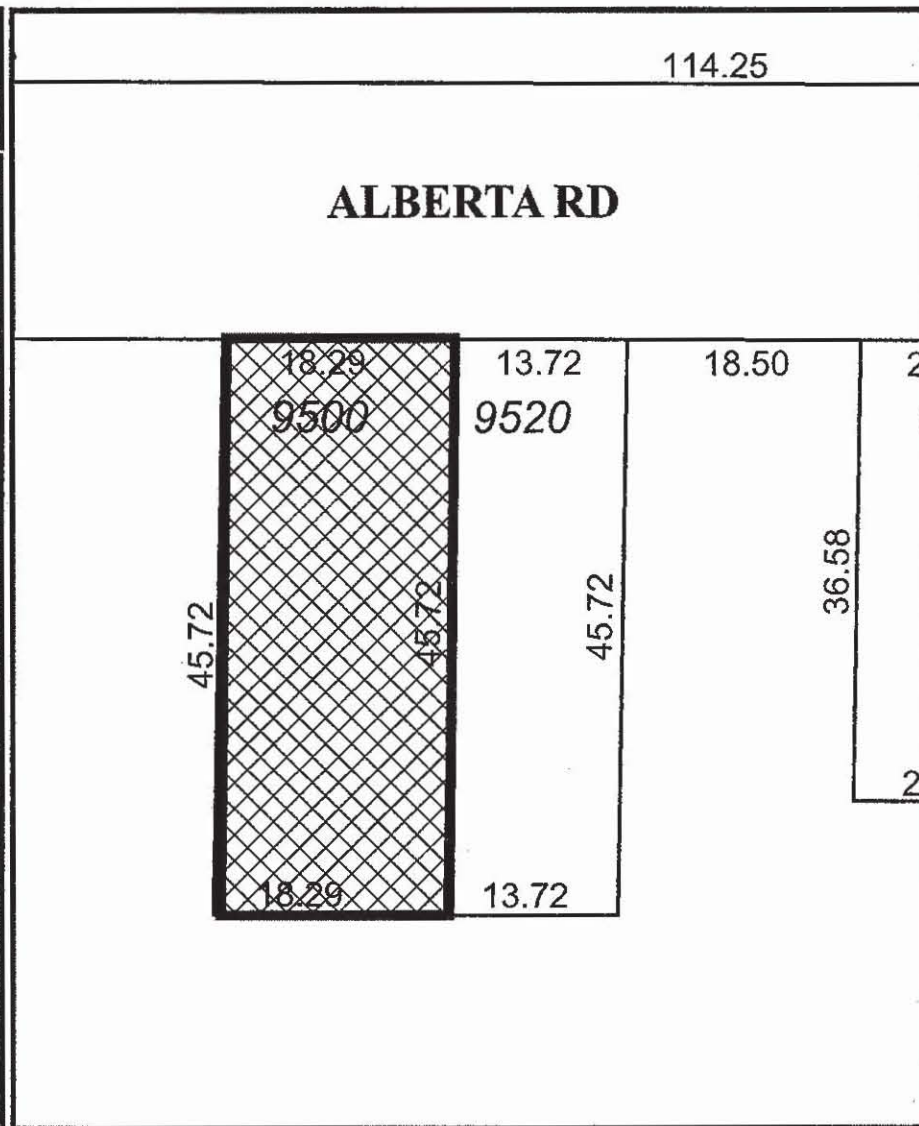
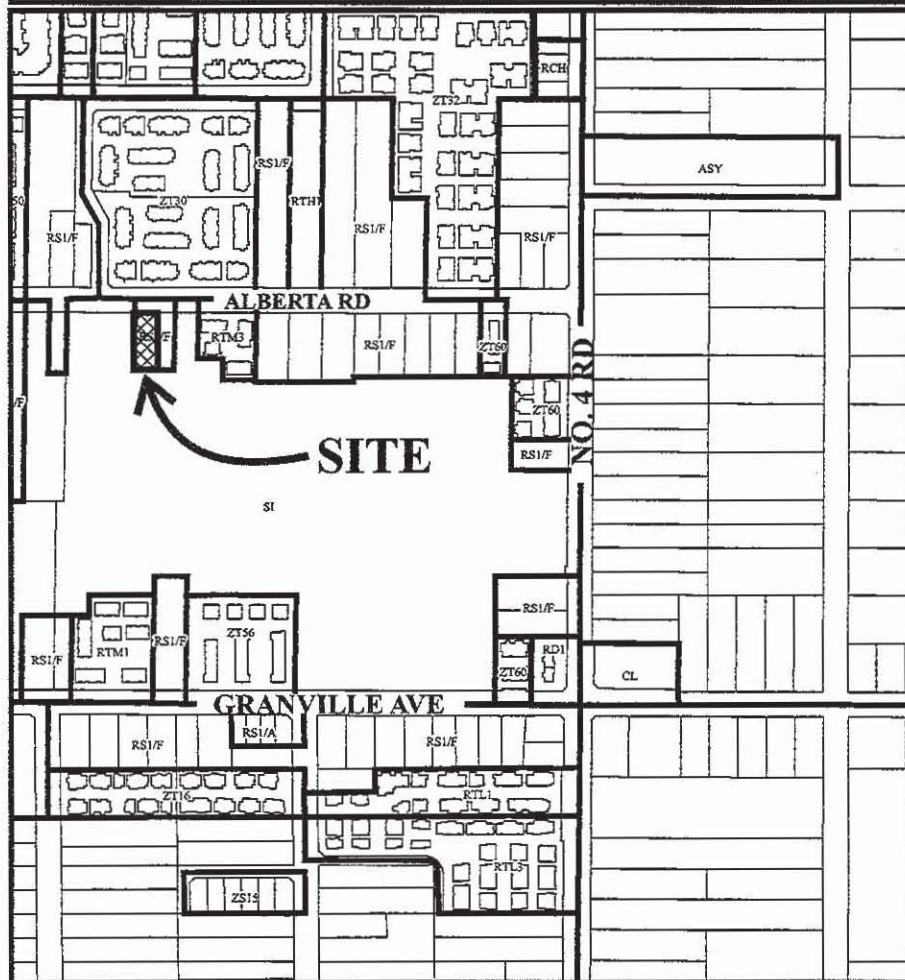
Attachment 3: Development Application Data Sheet

Attachment 4: McLennan North Sub-Area Land Use Location Map

Prior to final adoption of Zoning Amendment Bylaw 8810, the developer is required to submit security in the amount of \$10,000 for the installation of curb stops in the parking spaces and fencing surrounding the surface parking area, including masonry fencing (no higher than 0.9 m) along the front property line and solid wood fencing (no higher than 1.2 m) along the side property lines. The security will be returned upon completion of the works.



City of Richmond



PH-7



RZ 09-467609

Original Date: 04/30/09

Revision Date: 08/08/11

Note: Dimensions are in METRES

ATTACHMENT 1



RZ 09-467609

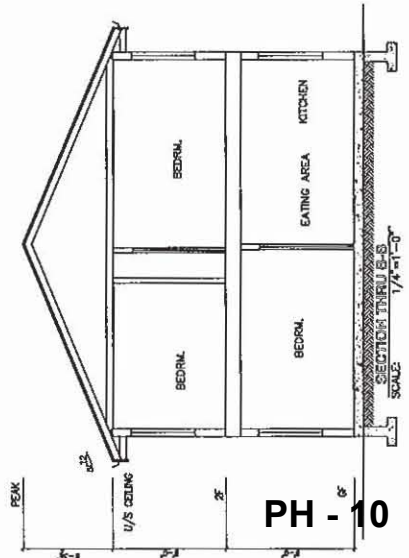
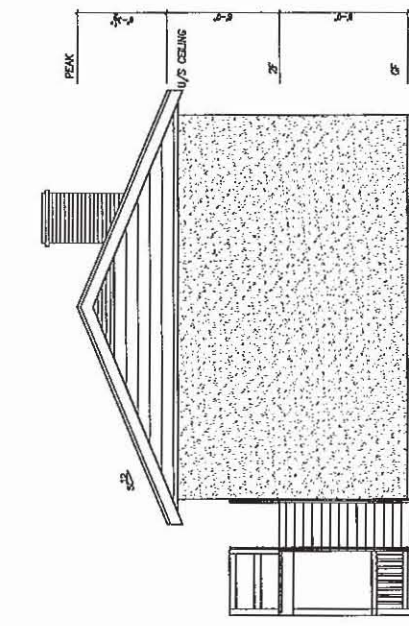
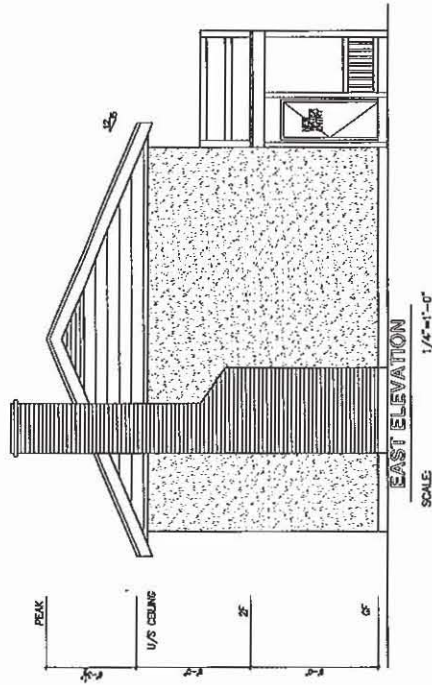
Original Date: 04/30/09

Amended Date:

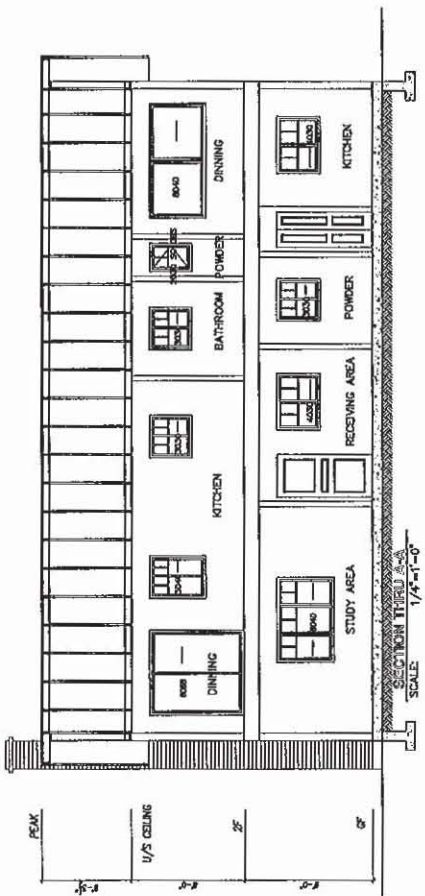
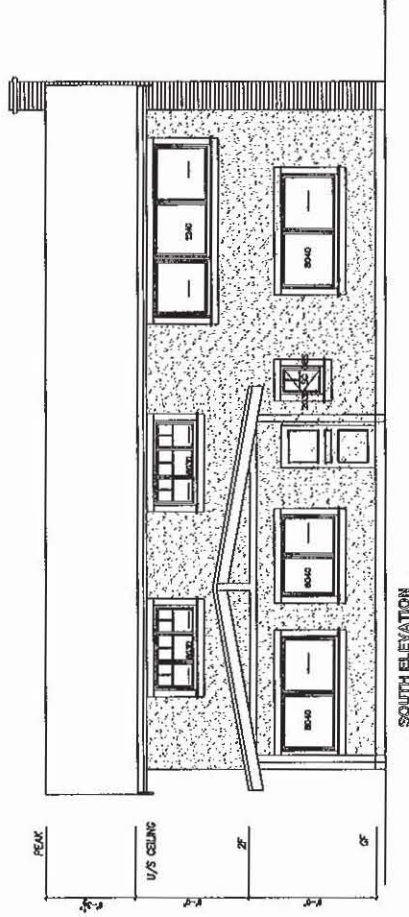
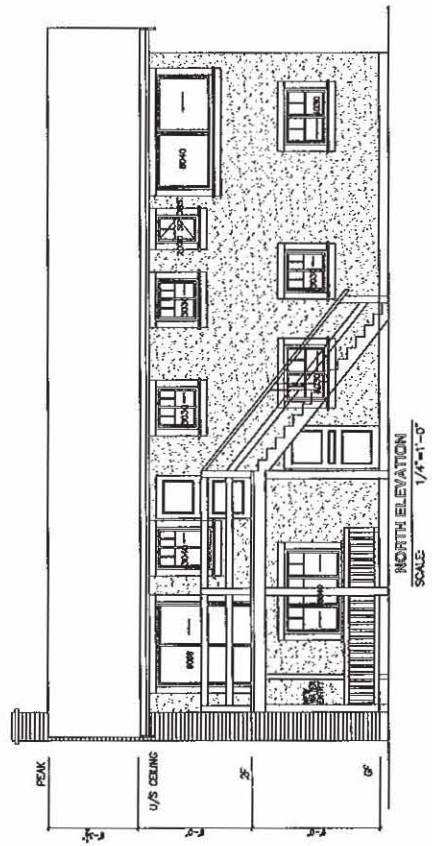
Note: Dimensions are in METRES

PH 8

1	1/4" = 1'-0"	1/4" = 1'-0"
2	1/8" = 1'-0"	1/8" = 1'-0"
3	1/2" = 1'-0"	1/2" = 1'-0"
4	1" = 1'-0"	1" = 1'-0"
5	1 1/2" = 1'-0"	1 1/2" = 1'-0"
6	2" = 1'-0"	2" = 1'-0"
7	2 1/2" = 1'-0"	2 1/2" = 1'-0"
8	3" = 1'-0"	3" = 1'-0"
9	3 1/2" = 1'-0"	3 1/2" = 1'-0"
10	4" = 1'-0"	4" = 1'-0"
11	4 1/2" = 1'-0"	4 1/2" = 1'-0"
12	5" = 1'-0"	5" = 1'-0"
13	5 1/2" = 1'-0"	5 1/2" = 1'-0"
14	6" = 1'-0"	6" = 1'-0"
15	6 1/2" = 1'-0"	6 1/2" = 1'-0"
16	7" = 1'-0"	7" = 1'-0"
17	7 1/2" = 1'-0"	7 1/2" = 1'-0"
18	8" = 1'-0"	8" = 1'-0"
19	8 1/2" = 1'-0"	8 1/2" = 1'-0"
20	9" = 1'-0"	9" = 1'-0"
21	9 1/2" = 1'-0"	9 1/2" = 1'-0"
22	10" = 1'-0"	10" = 1'-0"
23	10 1/2" = 1'-0"	10 1/2" = 1'-0"
24	11" = 1'-0"	11" = 1'-0"
25	11 1/2" = 1'-0"	11 1/2" = 1'-0"
26	12" = 1'-0"	12" = 1'-0"
27	12 1/2" = 1'-0"	12 1/2" = 1'-0"
28	13" = 1'-0"	13" = 1'-0"
29	13 1/2" = 1'-0"	13 1/2" = 1'-0"
30	14" = 1'-0"	14" = 1'-0"
31	14 1/2" = 1'-0"	14 1/2" = 1'-0"
32	15" = 1'-0"	15" = 1'-0"
33	15 1/2" = 1'-0"	15 1/2" = 1'-0"
34	16" = 1'-0"	16" = 1'-0"
35	16 1/2" = 1'-0"	16 1/2" = 1'-0"
36	17" = 1'-0"	17" = 1'-0"
37	17 1/2" = 1'-0"	17 1/2" = 1'-0"
38	18" = 1'-0"	18" = 1'-0"
39	18 1/2" = 1'-0"	18 1/2" = 1'-0"
40	19" = 1'-0"	19" = 1'-0"
41	19 1/2" = 1'-0"	19 1/2" = 1'-0"
42	20" = 1'-0"	20" = 1'-0"
43	20 1/2" = 1'-0"	20 1/2" = 1'-0"
44	21" = 1'-0"	21" = 1'-0"
45	21 1/2" = 1'-0"	21 1/2" = 1'-0"
46	22" = 1'-0"	22" = 1'-0"
47	22 1/2" = 1'-0"	22 1/2" = 1'-0"
48	23" = 1'-0"	23" = 1'-0"
49	23 1/2" = 1'-0"	23 1/2" = 1'-0"
50	24" = 1'-0"	24" = 1'-0"
51	24 1/2" = 1'-0"	24 1/2" = 1'-0"
52	25" = 1'-0"	25" = 1'-0"
53	25 1/2" = 1'-0"	25 1/2" = 1'-0"
54	26" = 1'-0"	26" = 1'-0"
55	26 1/2" = 1'-0"	26 1/2" = 1'-0"
56	27" = 1'-0"	27" = 1'-0"
57	27 1/2" = 1'-0"	27 1/2" = 1'-0"
58	28" = 1'-0"	28" = 1'-0"
59	28 1/2" = 1'-0"	28 1/2" = 1'-0"
60	29" = 1'-0"	29" = 1'-0"
61	29 1/2" = 1'-0"	29 1/2" = 1'-0"
62	30" = 1'-0"	30" = 1'-0"
63	30 1/2" = 1'-0"	30 1/2" = 1'-0"
64	31" = 1'-0"	31" = 1'-0"
65	31 1/2" = 1'-0"	31 1/2" = 1'-0"
66	32" = 1'-0"	32" = 1'-0"
67	32 1/2" = 1'-0"	32 1/2" = 1'-0"
68	33" = 1'-0"	33" = 1'-0"
69	33 1/2" = 1'-0"	33 1/2" = 1'-0"
70	34" = 1'-0"	34" = 1'-0"
71	34 1/2" = 1'-0"	34 1/2" = 1'-0"
72	35" = 1'-0"	35" = 1'-0"
73	35 1/2" = 1'-0"	35 1/2" = 1'-0"
74	36" = 1'-0"	36" = 1'-0"
75	36 1/2" = 1'-0"	36 1/2" = 1'-0"
76	37" = 1'-0"	37" = 1'-0"
77	37 1/2" = 1'-0"	37 1/2" = 1'-0"
78	38" = 1'-0"	38" = 1'-0"
79	38 1/2" = 1'-0"	38 1/2" = 1'-0"
80	39" = 1'-0"	39" = 1'-0"
81	39 1/2" = 1'-0"	39 1/2" = 1'-0"
82	40" = 1'-0"	40" = 1'-0"
83	40 1/2" = 1'-0"	40 1/2" = 1'-0"
84	41" = 1'-0"	41" = 1'-0"
85	41 1/2" = 1'-0"	41 1/2" = 1'-0"
86	42" = 1'-0"	42" = 1'-0"
87	42 1/2" = 1'-0"	42 1/2" = 1'-0"
88	43" = 1'-0"	43" = 1'-0"
89	43 1/2" = 1'-0"	43 1/2" = 1'-0"
90	44" = 1'-0"	44" = 1'-0"
91	44 1/2" = 1'-0"	44 1/2" = 1'-0"
92	45" = 1'-0"	45" = 1'-0"
93	45 1/2" = 1'-0"	45 1/2" = 1'-0"
94	46" = 1'-0"	46" = 1'-0"
95	46 1/2" = 1'-0"	46 1/2" = 1'-0"
96	47" = 1'-0"	47" = 1'-0"
97	47 1/2" = 1'-0"	47 1/2" = 1'-0"
98	48" = 1'-0"	48" = 1'-0"
99	48 1/2" = 1'-0"	48 1/2" = 1'-0"
100	49" = 1'-0"	49" = 1'-0"
101	49 1/2" = 1'-0"	49 1/2" = 1'-0"
102	50" = 1'-0"	50" = 1'-0"
103	50 1/2" = 1'-0"	50 1/2" = 1'-0"
104	51" = 1'-0"	51" = 1'-0"
105	51 1/2" = 1'-0"	51 1/2" = 1'-0"
106	52" = 1'-0"	52" = 1'-0"
107	52 1/2" = 1'-0"	52 1/2" = 1'-0"
108	53" = 1'-0"	53" = 1'-0"
109	53 1/2" = 1'-0"	53 1/2" = 1'-0"
110	54" = 1'-0"	54" = 1'-0"
111	54 1/2" = 1'-0"	54 1/2" = 1'-0"
112	55" = 1'-0"	55" = 1'-0"
113	55 1/2" = 1'-0"	55 1/2" = 1'-0"
114	56" = 1'-0"	56" = 1'-0"
115	56 1/2" = 1'-0"	56 1/2" = 1'-0"
116	57" = 1'-0"	57" = 1'-0"
117	57 1/2" = 1'-0"	57 1/2" = 1'-0"
118	58" = 1'-0"	58" = 1'-0"
119	58 1/2" = 1'-0"	58 1/2" = 1'-0"
120	59" = 1'-0"	59" = 1'-0"
121	59 1/2" = 1'-0"	59 1/2" = 1'-0"
122	60" = 1'-0"	60" = 1'-0"
123	60 1/2" = 1'-0"	60 1/2" = 1'-0"
124	61" = 1'-0"	61" = 1'-0"
125	61 1/2" = 1'-0"	61 1/2" = 1'-0"
126	62" = 1'-0"	62" = 1'-0"
127	62 1/2" = 1'-0"	62 1/2" = 1'-0"
128	63" = 1'-0"	63" = 1'-0"
129	63 1/2" = 1'-0"	63 1/2" = 1'-0"
130	64" = 1'-0"	64" = 1'-0"
131	64 1/2" = 1'-0"	64 1/2" = 1'-0"
132	65" = 1'-0"	65" = 1'-0"
133	65 1/2" = 1'-0"	65 1/2" = 1'-0"
134	66" = 1'-0"	66" = 1'-0"
135	66 1/2" = 1'-0"	66 1/2" = 1'-0"
136	67" = 1'-0"	67" = 1'-0"
137	67 1/2" = 1'-0"	67 1/2" = 1'-0"
138	68" = 1'-0"	68" = 1'-0"
139	68 1/2" = 1'-0"	68 1/2" = 1'-0"
140	69" = 1'-0"	69" = 1'-0"
141	69 1/2" = 1'-0"	69 1/2" = 1'-0"
142	70" = 1'-0"	70" = 1'-0"
143	70 1/2" = 1'-0"	70 1/2" = 1'-0"
144	71" = 1'-0"	71" = 1'-0"
145	71 1/2" = 1'-0"	71 1/2" = 1'-0"
146	72" = 1'-0"	72" = 1'-0"
147	72 1/2" = 1'-0"	72 1/2" = 1'-0"
148	73" = 1'-0"	73" = 1'-0"
149	73 1/2" = 1'-0"	73 1/2" = 1'-0"
150	74" = 1'-0"	74" = 1'-0"
151	74 1/2" = 1'-0"	74 1/2" = 1'-0"
152	75" = 1'-0"	75" = 1'-0"
153	75 1/2" = 1'-0"	75 1/2" = 1'-0"
154	76" = 1'-0"	76" = 1'-0"
155	76 1/2" = 1'-0"	76 1/2" = 1'-0"
156	77" = 1'-0"	77" = 1'-0"
157	77 1/2" = 1'-0"	77 1/2" = 1'-0"
158	78" = 1'-0"	78" = 1'-0"
159	78 1/2" = 1'-0"	78 1/2" = 1'-0"
160	79" = 1'-0"	79" = 1'-0"
161	79 1/2" = 1'-0"	79 1/2" = 1'-0"
162	80" = 1'-0"	80" = 1'-0"
163	80 1/2" = 1'-0"	80 1/2" = 1'-0"
164	81" = 1'-0"	81" = 1'-0"
165	81 1/2" = 1'-0"	81 1/2" = 1'-0"
166	82" = 1'-0"	82" = 1'-0"
167	82 1/2" = 1'-0"	82 1/2" = 1'-0"
168	83" = 1'-0"	83" = 1'-0"
169	83 1/2" = 1'-0"	83 1/2" = 1'-0"
170	84" = 1'-0"	84" = 1'-0"
171	84 1/2" = 1'-0"	84 1/2" = 1'-0"
172	85" = 1'-0"	85" = 1'-0"
173	85 1/2" = 1'-0"	85 1/2" = 1'-0"
174	86" = 1'-0"	86" = 1'-0"
175	86 1/2" = 1'-0"	86 1/2" = 1'-0"
176	87" = 1'-0"	87" = 1'-0"
177	87 1/2" = 1'-0"	87 1/2" = 1'-0"
178	88" = 1'-0"	88" = 1'-0"
179	88 1/2" = 1'-0"	88 1/2" = 1'-0"
180	89" = 1'-0"	89" = 1'-0"
181	89 1/2" = 1'-0"	89 1/2" = 1'-0"
182	90" = 1'-0"	90" = 1'-0"
183	90 1/2" = 1'-0"	90 1/2" = 1'-0"
184	91" = 1'-0"	91" = 1'-0"
185	91 1/2" = 1'-0"	91 1/2" = 1'-0"
186	92" = 1'-0"	92" = 1'-0"
187	92 1/2" = 1'-0"	92 1/2" = 1'-0"
188	93" = 1'-0"	93" = 1'-0"
189	93 1/2" = 1'-0"	93 1/2" = 1'-0"
190	94" = 1'-0"	94" = 1'-0"
191	94 1/2" = 1'-0"	94 1/2" = 1'-0"
192	95" = 1'-0"	95" = 1'-0"
193	95 1/2" = 1'-0"	95 1/2" = 1'-0"
194	96" = 1'-0"	96" = 1'-0"
195	96 1/2" = 1'-0"	96 1/2" = 1'-0"
196	97" = 1'-0"	97" = 1'-0"
197	97 1/2" = 1'-0"	97 1/2" = 1'-0"
198	98" = 1'-0"	98" = 1'-0"
199	98 1/2" = 1'-0"	98 1/2" = 1'-0"
200	99" = 1'-0"	99" = 1'-0"
201	99 1/2" = 1'-0"	99 1/2" = 1'-0"
202	100" = 1'-0"	100" = 1'-0"
203	100 1/2" = 1'-0"	100 1/2" = 1'-0"
204	101" = 1'-0"	101" = 1'-0"
205	101 1/2" = 1'-0"	101 1/2" = 1'-0"
206	102" = 1'-0"	102" = 1'-0"
207	102 1/2" = 1'-0"	102 1/2" = 1'-0"
208	103" = 1'-0"	103" = 1'-0"
209	103 1/2" = 1'-0"	103 1/2" = 1'-0"
210	104" = 1'-0"	104" = 1'-0"
211	104 1/2" = 1'-0"	104 1/2" = 1'-0"
212	105" = 1'-0"	105" = 1'-0"
213	105 1/2" = 1'-0"	105 1/2" = 1'-0"
214	106" = 1'-0"	106" = 1'-0"
215	106 1/2" = 1'-0"	106 1/2" = 1'-0"
216	107" = 1'-0"	107" = 1'-0"
217	107 1/2" = 1'-0"	107 1/2" = 1'-0"
218	108" = 1'-0"	108" = 1'-0"
219	108 1/2" = 1'-0"	108 1/2" = 1'-0"
220	109" = 1'-0"	109" = 1'-0"
221	109 1/2" = 1'-0"	109 1/2" = 1'-0"
222	110" = 1'-0"	110" = 1'-0"
223	110 1/2" = 1'-0"	110 1/2" = 1'-0"
224	111" = 1'-0"	111" = 1'-0"
225	111 1/2" = 1'-0"	111 1/2" = 1'-0"
226	112" = 1'-0"	112" = 1'-0"
227	112 1/2" = 1'-0"	112 1/2" = 1'-0"
228	113" = 1'-0"	113" = 1'-0"
229	113 1/2" = 1'-0"	113 1/2" = 1'-0"
230	114" = 1'-0"	114" = 1'-0"
231	114 1/2" = 1'-0"	114 1/2" = 1'-0"
232	115" = 1'-0"	115" = 1'-0"
233	115 1/2" = 1'-0"	115 1/2" = 1'-0"
234	116" = 1'-0"	116" = 1'-0"
235	116 1/2" = 1'-0"	116 1/2" = 1'-0"
236	117" = 1'-0"	117" = 1'-0"
237	117 1/2" = 1'-0"	117 1/2" = 1'-0"
238	118" = 1'-0"	118" = 1'-0"
239	118 1/2" = 1'-0"	118 1/2" = 1'-0"
240	119" = 1'-0"	119" = 1'-0"
241	119 1/2" = 1'-0"	119 1/2" = 1'-0"
242	120" = 1'-0"	120" = 1'-0"
243	120 1/2" = 1'-0"	120 1/2" = 1'-0"
244	121" = 1'-0"	121" = 1'-0"
245	121 1/2" = 1'-0"	121 1/2" = 1'-0"
246	122" = 1'-0"	122" = 1'-0"
247	122 1/2" = 1'-0"	122 1/2" = 1'-0"
248	123" = 1'-0"	123" = 1'-0"
249	123 1/2" = 1'-0"	123 1/2" = 1'-0"
250	124" = 1'-0"	124" = 1'-0"
251	124 1/2" = 1'-0"	124 1/2" = 1'-0"
252	125" = 1'-0"	125" = 1'-0"
253	125 1/2" = 1'-0"	125 1/2" = 1'-0"
254	126" = 1'-0"	126" = 1'-0"
255	126 1/2" = 1'-0"	126 1/2" = 1'-0"
256	127" = 1'-0"	127" = 1'-0"
257	127 1/2" = 1'-0"	127 1/2" = 1'-0"
258	128" = 1'-0"	128" = 1'-0"
259	128 1/2" = 1'-0"	128 1/2" = 1'-0"
260	129" = 1'-0"	129" = 1'-0"
261	129 1/2" = 1'-0"	129 1/2" = 1'-0"
262	130" = 1'-0"	130" = 1'-0"
263	130 1/2" = 1'-0"	130 1/2" = 1'-0"
264	131" = 1'-0"	131" = 1'-0"
265	131 1/2" = 1'-0"	131 1/2" = 1'-0"
266	132" = 1'-0"	132" = 1'-0"
267	132 1/2" = 1'-0"	132 1/2" = 1'-0"
268	133" = 1'-0"	133" = 1'-0"
269	133 1/2" = 1'-0"	133 1/2" = 1'-0"
270	134" = 1'-0"	134" = 1'-0"
271	134 1/2" = 1'-0"	134 1/2" = 1'-0"
272	135" = 1'-0"	135" = 1'-0"
273	135 1/2" = 1'-0"	135 1/2" = 1'-0"
274	136" = 1'-0"	136" = 1'-0"
275	136 1/2" = 1'-0"	136 1/2" = 1'-0"
276	137" = 1'-0"	137" = 1'-0"
277	137 1/2" = 1'-0"	137 1/2" = 1'-0"
278	138" = 1'-0"	138" = 1'-0"
279	138 1/2" = 1'-0"	138 1/2" = 1'-0"
280	139" = 1'-0"	139" = 1'-0"
281	139 1/2" = 1'-0"	13



PH - 10



NO.	DATE	REVISIONS
1	01/01/01	ISSUED FOR PERMIT
2	01/01/01	FOR RECORD

PROJECT DESCRIPTION
This drawing is a set of architectural drawings for a house located at 9500 Alberta Road, Richmond, B.C. The house is a two-story residence with a total area of 2,500 sq. ft. The drawings include a site plan, floor plan, and elevations. The house is to be built on a lot that is 100 feet wide and 120 feet deep. The house is to be built on a lot that is 100 feet wide and 120 feet deep. The house is to be built on a lot that is 100 feet wide and 120 feet deep.

9500 ALBERTA ROAD
DAYCARE REZONING
RICHMOND, B.C.

PELMAN ARCHITECTURE
Architects & Planners
1111 West 10th Avenue
Vancouver, B.C. V6H 1T1
Tel: (604) 681-1111
Fax: (604) 681-1112
www.pelman.ca

PROJECT NO.	010001
DATE	01/01/01
BY	AC
CHECKED BY	AC
DATE	01/01/01
SCALE	AS SHOWN

A-102



City of Richmond

6911 No. 3 Road
Richmond, BC V6Y 2C1
www.richmond.ca
604-276-4000

Development Application Data Sheet

RZ 09-467609

Attachment 3

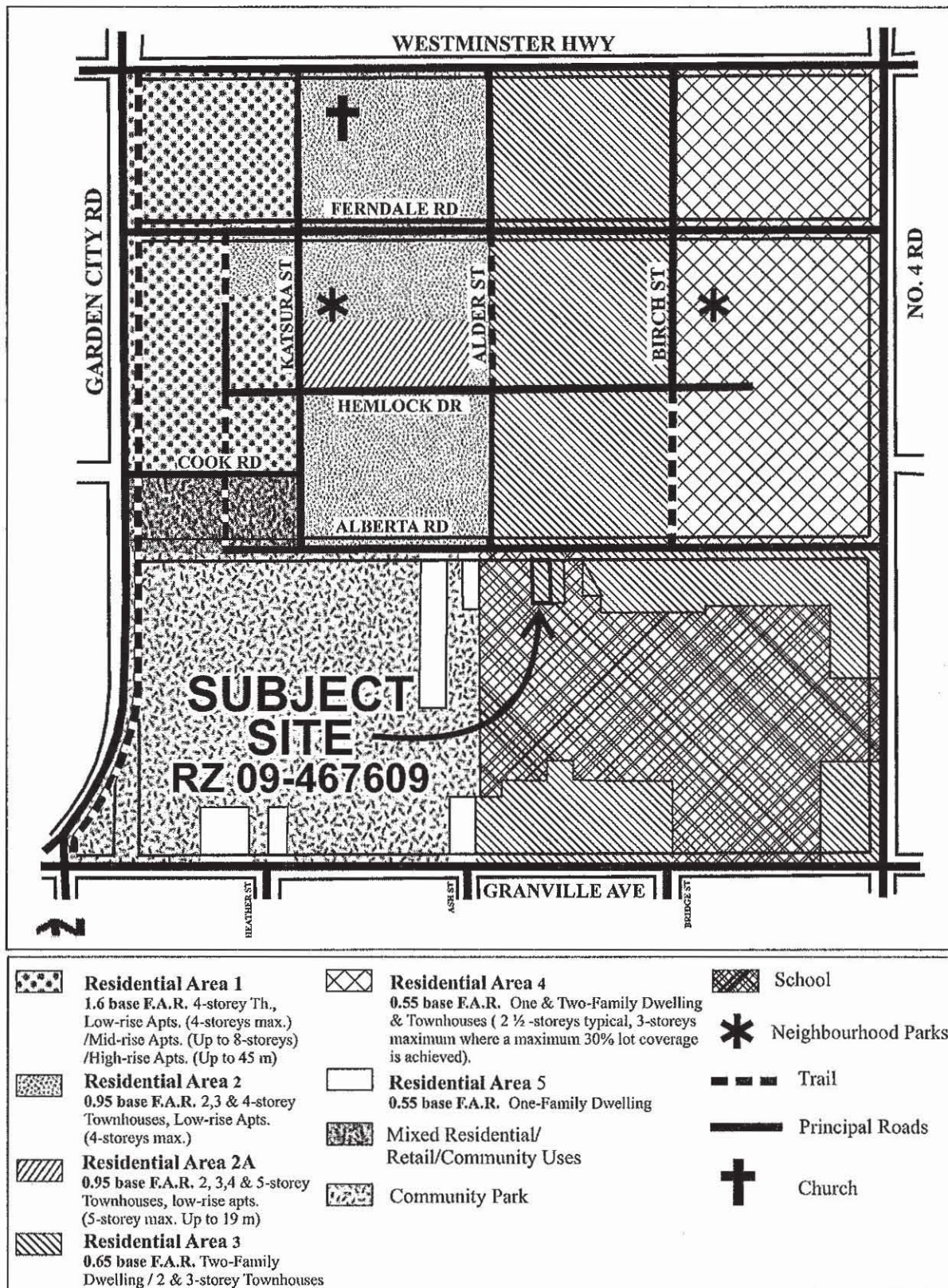
Address: 9500 Alberta Road

Applicant: Ching-Ho Chen

Planning Area(s): McLennan North Sub-Area (City Centre)

	Existing	Proposed
Owner:	Ching H Chen & Li C Chen Wu	No change
Site Size (m²):	836 m ²	No change
Land Uses:	Residential	Residential & Child Care
Area Plan Designation:	Residential Area 3 0.65 base FAR Two-family dwelling/ 2 & 3-storey Townhouses	Complies
OCP Aircraft Noise Policy:	Area 4 - Aircraft Noise Notification Area (Covenant required)	Complies
Zoning:	Single Detached (RS1/F)	Residential Child Care (RCC)
Number of Units:	1 dwelling & ancillary child care facility for 10 children & 2 staff	1 dwelling & ancillary child care facility for 16 children & 4 staff
	Bylaw Requirement	Proposed
Floor Area Ratio:	Max. 0.5	Approx. 0.3 existing
Child Care	Max. 16 children	16 children
Lot Coverage: Building Non-porous surfaces Live landscaping	Max. 40% Max. 70 % Min. 20 %	20.5 % existing 51 % proposed 49 % proposed
Lot Size:	Min. 15 m width Min. 540 m ² area	18.3 m existing 836 m ² existing
Setbacks: Front Yard Interior Side Yards Rear Yard	Min. 6 m Min. 1.2 m Min. 6 m	8.1 m existing 1.5 m to 2.3 m existing 20.5 m existing
Height (m):	Max. 9 m & 2 ½ storey	Approx. 6.5 m & 2 storey existing
Off-street Parking Spaces:		
Resident	2	2
Staff	3	3
Parent drop off	2	2
Total	7	7

McLennan North Sub-Area Plan Land Use Map





City of Richmond

Bylaw 8810

Richmond Zoning Bylaw 8500 Amendment Bylaw 8810 (09-467609) 9500 ALBERTA ROAD

The Council of the City of Richmond, in open meeting assembled, enacts as follows:

1. The Zoning Map of the City of Richmond, which accompanies and forms part of Richmond Zoning Bylaw 8500, is amended by repealing the existing zoning designation of the following area and by designating it **RESIDENTIAL CHILD CARE (RCC)**.

P.I.D. 003-788-466

Lot 58 Section 10 Block 4 North Range 6 West New Westminster District Plan 43186

2. This Bylaw may be cited as **"Richmond Zoning Bylaw 8500, Amendment Bylaw 8810"**.

FIRST READING

A PUBLIC HEARING WAS HELD ON

SECOND READING

THIRD READING

OTHER REQUIREMENTS SATISFIED

ADOPTED

OCT 11 2011

CITY OF RICHMOND
APPROVED by 
APPROVED by Director or Solicitor 

MAYOR

CORPORATE OFFICER



City of Richmond
Planning and Development Department

Report to Committee

To: Planning Committee **Date:** September 16, 2011
From: Brian J. Jackson, MCIP **File:** RZ 10-531707
Director of Development
Re: Application by Studio Elemental Design for Rezoning at 9220 No. 3 Road from Land Use Contract 078 and Single Detached (RS1/E) to Local Commercial (CL)

Staff Recommendation

1. That Official Community Plan Amendment Bylaw No. 8820, to redesignate 9220 No. 3 Road from "Low-Density Residential" to "Commercial" in the Official Community Plan Specific Land Use Map (Attachment 2 to Schedule 1 of Bylaw No. 7100), be introduced and given first reading.
2. That Bylaw No. 8820, having been considered in conjunction with:
 - the City's Financial Plan and Capital Program;
 - the Greater Vancouver Regional District Solid Waste and Liquid Waste Management Plans;is hereby deemed to be consistent with said program and plans, in accordance with Section 882(3)(a) of the Local Government Act.
3. That Bylaw No. 8820, having been considered in accordance with OCP Bylaw Preparation Consultation Policy 5043, is hereby deemed not to require any further consultation.
4. That the provisions of "Land Use Contract 078" be discharged from the southern portion of 9220 No. 3 Road and that Bylaw No. 8821, to amend the "Local Commercial (CL)" zoning district and rezone 9220 No. 3 Road from "Land Use Contract 078" and "Single Detached (RS1/E)" to "Local Commercial (CL)", be introduced and given first reading.

Brian J. Jackson, MCIP
Director of Development
BJ:ke

FOR ORIGINATING DEPARTMENT USE ONLY		
ROUTED TO:	CONCURRENCE	CONCURRENCE OF GENERAL MANAGER
Community Bylaws	Y <input checked="" type="checkbox"/> N <input type="checkbox"/>	
Policy Planning	Y <input checked="" type="checkbox"/> N <input type="checkbox"/>	

Staff Report

Origin

Studio Elemental Design have applied to the City of Richmond for permission to rezone 9220 No. 3 Road (**Attachment 1** – Location Map) from Single Detached (RS1/E) to Local Commercial (CL) in order to permit redevelopment of the existing veterinary service facility (Richmond Animal Hospital) on the subject site.

As a result of this rezoning application, discharge Land Use Contract 078 over the southern half of 9220 No. 3 Road is required along with a minor amendment to the Local Commercial (CL) zone.

History of Subject Site

The Richmond Animal Hospital has operated on the subject site since the early 1970's. Currently, the zoning consists of Single Detached (RS1/E) over the northern half of the site that contains the building associated with the Richmond Animal Hospital. The veterinary service use operating out of the building is non-conforming to the residential zoning on the northern half of the property. The southern half of the site has a Land Use Contract (078) that was registered in 1977. Uses permitted in the Land Use Contract are limited to off-street vehicle parking for the Richmond Animal Hospital. Off-street parking is located on the southern half of the property in compliance with the provisions of the Land Use Contract (refer to **Attachment 1** for zoning).

This rezoning application facilitates a discharge of the existing Land Use Contract 078 so that a zoning amendment to allow veterinary service use in the zone, which enables the owner of the Richmond Animal Hospital to undertake upgrades to the existing building and site to maintain operations over the long term.

Project Description

The existing Richmond Animal Hospital building is primarily one-storey, with the exception of a small second-storey portion on the west side of the building (i.e., close to No. 3 Road) that was constructed in the early 1970's. To ensure the long-term viability of the Richmond Animal Hospital, a significant retrofit of the building that involves a complete internal renovation and minor addition of floor space to update the facility to current standards is required.

The building retrofit will be undertaken within the existing building footprint. Additional floor space is proposed on a small second storey area at the east side of the building (approximately 82 sq.m in area). All proposed floor space on the second storey is for supporting accessory uses (i.e., administration offices, staff areas) with all veterinary service uses on the ground level. The rear yard setback of the existing ground floor to the east property line is 1.8 m (6 ft.). The proposed second floor addition is set back 5 m (16.5 ft.) from the rear property line and 5 m (16.5 ft.) from the north side yard.

The building retrofit retains a majority of the structural support walls on the ground floor and second level with demolition of most internal walls to facilitate the interior renovations. The exterior of the building will be retrofitted to upgrade the overall appearance of the facility. External materials and overall form and character of the project will be reviewed through a

future Development Permit application, which is required for the site (refer to **Attachment 2** for a preliminary site and building plan and elevations)

Findings of Fact

A Development Application Data Sheet providing details about the development proposal is contained in **Attachment 3**.

Surrounding Development

To the North: A residential dwelling on a property zoned Single Detached (RS1/E).

To the East: A residential dwelling on a property zoned Single Detached (RS1/E) in the subdivision behind the subject site.

To the South: A residential dwelling on a property zoned Single Detached (RS1/E)

To the West: Across No. 3 Road, Broadmoor Blvd., and properties zoned Single-Detached (RS1/E).

Related Policies & Studies

Official Community Plan (OCP) – Existing Land Use Designations and Proposed Amendment

The OCP Generalized Land Use Map designates the subject site for “Neighbourhood Residential”. No amendment is required as a result of the proposal as the existing designation allows for complementary uses servicing residential areas (i.e., local commercial).

The OCP Specific Land Use Map designates the subject site for “Low-Density Residential.” This designation only allows primarily for residential land uses. As a result, an OCP amendment is required to redesignate the subject site to “Commercial”. A “Commercial” land use designation is appropriate for the subject site and proposed veterinary service use as this is a commercial activity that provides services to the local community.

Both the “Neighbourhood Residential” and “Commercial” land use designations would permit a residential accessory use in the form of a residential caretaker/operator unit. Although not proposed by the applicant at this time, the existing and proposed land use designations would allow for a residential caretaker unit to be established within the existing veterinary service facility should the owner wish to include this use in the future.

Consultation

OCP Bylaw Preparation Consultation Policy 5043

In accordance with Council Policy 5043 on consultation for OCP amendments, the proposed development does not need to be referred to School District. No. 38 (Richmond) because the uses will not generate additional demand from school age children. No additional referrals to external agencies are required based on the provisions of the policy.

Staff CommentsZoning Approach – Amendments to the Local Commercial (CL) Zone

The proposal involves rezoning the subject site to Local Commercial (CL) and recommends minor amendments to this zoning district to include “Veterinary Service” as an additional use permitted only on the subject site. This proposed zoning amendment does not permit a veterinary service use as an outright permitted use for all sites in the City zoned Local Commercial (CL) nor does it permit the subject site to be used as a retail convenience store. In summary, zoning will restrict the use of this site for a veterinary service operation only, which will facilitate the Richmond Animal Hospital to continue to operate, while not permitting other general retail uses (i.e., convenience store).

Veterinary service allows for the examination, care, diagnosis and treatment of pets. Accessory uses permitted relate to the short-term accommodation of pets undergoing treatment, pet grooming and the retail of pet medicine and supplies. A veterinary service facility does not allow for any animal breeding and boarding, animal shelters or animal daycare and none of these uses are proposed or will be permitted in conjunction with the Richmond Animal Hospital facility.

In addition to amending the Local Commercial (CL) zone to permit veterinary service on a site-specific basis, additional minor amendments are recommended to permit a residential security/operator dwelling on the subject site so long as it is located in the same building as the veterinary service facility. Although this component is not proposed now as part of the development, proposed zoning provisions allow for a caretaker residence to be established in the future.

Other provisions of the Local Commercial (CL) zone related to density, site coverage, building height and parking will enable the proposed redevelopment of the animal hospital on the site. As the proposal involves retrofitting the existing structure and generally utilizing the same footprint, variances to reduce the interior side yard setback (north property line) and rear yard setback (east property line) will be required as follows:

- Reduce north property line (side yard) setback from 3m (10 ft.) to 1.8m (6 ft.) for the ground floor of the existing building.
- Reduce east property line (rear yard) setback from 3m (10ft.) to 1.8m (6 ft.) for the ground floor of the existing building.

These variances to reduce setbacks along the north and east adjacencies will be reviewed through the processing of the forthcoming Development Permit application. Remaining setbacks to the south and west (No. 3 Road) property line comply with the minimum requirements in the zone.

Community Bylaws – Previous Complaints about Animal Boarding and Daycare

In 2007, Community Bylaws dealt with some complaints about the subject site being utilized as an animal daycare and boarding operation in conjunction with the Richmond Animal Hospital operation. In response to these concerns, the owner stopped all animal boarding and daycare operations on the subject site. Community Bylaws and Vancouver Coastal Health have not received any property use or noise related concerns on the subject property since animal boarding and daycare uses were stopped on the site. The proposed redevelopment of the Richmond Animal Hospital limits all operations as a veterinary facility only. Boarding of

animals is only permitted for those in care of the facility. No stand alone animal boarding or daycare is proposed or permitted to operate on the subject site. Animals in care that are required to go outside will be fully supervised by facility staff to ensure any impacts to neighbours (noise) are minimized.

Engineering – Storm, Sanitary and Water System Capacity Analysis

City storm and water systems were deemed to be sufficient to accommodate the proposed redevelopment on the site. A sanitary system capacity analysis was submitted and approved by the City, which identified that no upgrades to the City sanitary system are required as a result of the development.

The subject site has three (3) connections to the City sanitary sewer system. Two (2) of these connections are shared with other properties and the remaining connection is a single connection to the subject site. As part of this development, the existing two (2) sanitary connections that are shared with other properties must be capped. The subject property is to be serviced by a separate individual sanitary sewer connection, that includes a suitable sized inspection chamber as identified in the recommendations contained in the approved sanitary sewer capacity analysis. These works are to be completed through a City work order required at the processing of the building permit.

Transportation/Engineering Utilities – Frontage Works Along No. 3 Road

The subject site is serviced by two (2) driveway crossings providing vehicle access from No. 3 Road. Through the redevelopment, removal of existing driveway crossings and reinstatement of the concrete sidewalk is required. As a result, one (1) new driveway crossing will be installed to provide access to No. 3 Road and is located approximately 9 m north of the south property line (to align with the intersection of Broadmoor Boulevard on the west side of No. 3 Road). Removal of existing driveways, reinstatement of the concrete sidewalk and installation of the new driveway crossing at the ultimate location are to be completed through a City work order required at the processing of the building permit.

Additional frontage upgrades (installation of a grass & treed boulevard and new concrete sidewalk) typically requested as part of a redevelopment along major arterial roads was examined. However, the proposal involves the retention of a number of large mature evergreen trees located in close proximity to the No. 3 Road property line. The proponent's arborist identified that a minimum tree retention zone be established around these trees to ensure their retention and viability. Any proposed frontage works involving the relocation of the existing concrete sidewalk will result in the works encroaching into the tree retention zone and existing drip line of the tree. Based on the recommendations of the arborist and overall tree retention strategy, frontage works will be limited to removal of existing driveway crossings, reinstatement of the sidewalk (in existing location) and installation of the new driveway crossing to minimize impacts to existing trees along No. 3 Road.

Additional landscaping to enhance the No. 3 Road streetscape and complement trees to be retained will be secured through the Development Permit application.

On-Site Tree Retention, Removal and Compensation

A tree survey and consulting arborist report was submitted, reviewed and approved by City staff. A summary of tree removal, retention and compensation is provided in the following table:

Total Number of Trees	Trees to be Removed	Trees to be Retained	Compensation Required	Comments
28	<ul style="list-style-type: none"> • 3 hazard trees • 3 trees conflict with building 	22	6 trees to be planted on site (2:1 ratio)	<ul style="list-style-type: none"> • 3 trees identified as hazard/high risk based on arborist assessment. No compensation required for removal of hazard trees. • Tree protection measures to be implemented for all on-site trees and trees on neighbouring properties identified for retention. • Refer to Attachment 4 for a tree retention and removal site plan.

Based on the redevelopment involving the retrofit of the existing building and use of the existing off-street parking areas, this proposal presents an opportunity to retain many of the existing mature on-site trees. An arborist report has been submitted and recommends retention of a total of 22 trees on the subject site. Three (3) trees are identified as a hazard and are recommended for removal due to their extremely poor condition or defect. No tree compensation is required for trees identified as a hazard. Three (3) trees are recommended for removal due to their close proximity and conflict with the existing and proposed building footprint. Six (6) trees will be replanted as compensation on the subject site (based on a 2:1 replacement ratio), which will be secured through the forthcoming Development Permit application landscape submission.

Tree protection measures (fencing, no disturbance/tree retention zones) are also required based on the recommendations and specifications of the arborist. To ensure on-site trees are protected during construction activity, the proponent is required to enter into a contract with a certified professional arborist to oversee and monitor on-site trees through the redevelopment of the property. Proof of an arborist contract is required prior to issuance of the Development Permit application.

Flood Plain Management Strategy

A flood indemnity covenant is required to be registered on title that identifies a minimum Flood Construction Level (FCL) of 2.9m or 0.3m above the surveyed crown of the road adjacent to the site. Registration of this legal document is a rezoning consideration for the proposed development (**Attachment 5**). This minimum flood construction level will apply to any new building construction occurring on the site and will not apply to the renovation of the existing building. In accordance with Flood Plain Designation and Protection Bylaw 8204, developments are not required to construct to the minimum FCL (2.9 m or 0.3m above the surveyed crown of the road adjacent to the site) if works are limited to renovations and no additional building area is being added to the building that would be below the minimum FCL. As a result, the retrofit and renovation of the facility on the subject site will be able to utilize the existing elevation of the foundation slab.

Analysis

The proposal facilitates the redevelopment of the Richmond Animal Hospital to enable the existing building to undergo a major retrofit to modernize the facility, upgrade the overall site appearance and meet the growing needs of the business that has operated on the subject property since the early 1970's. The zoning permits for the care, examination, diagnosis and treatment of animals and pets. This use allows for the short term accommodation of animals in care, but does not permit animal breeding or boarding, animal shelters or animal daycare. Minor amendments to the Local Commercial (CL) zone are required to permit the subject site as a "Veterinary Service" use only.

The proposed density of 0.34 FAR and site coverage of 31% complies with the provisions of the Local Commercial (CL) zone. A majority of the retrofitted facility will be one (1) storey with two (2) small second storey building components. The maximum height of the animal hospital facility is approximately 7.5 m (25 ft.) Based on the surrounding Single Detached zoning, the proposed development also is well below the density and coverage provisions of single-family dwellings, which can build to a density of 0.55 FAR with 45% site coverage, 9 m (30 ft.) height and 2 storey massing throughout.

The existing relationship of the animal hospital facility will remain relatively unchanged to the surrounding single-family properties as the proposal involves development over the existing building footprint. A proposed second storey addition situated at the rear (east end of the building) is setback approximately 5 m (16.5 ft.) from the rear property line and steps back significantly from the existing ground floor portion of the building, which is set back 1.8 m (6 ft.) from the rear property line. The second storey addition is also set back approximately 5 m (16.5 ft.) away from the side yard (north property line).

Forthcoming Development Permit Application

Review and processing of a development permit application is required to address the following aspects of the proposal:

- Overall form, character and architectural detailing of the project.
- Proposed landscaping in conjunction with tree retention.
- Massing and adjacency to surrounding properties.
- Review of requested variances for existing building walls on the side and rear yards.
- Finalize parking, loading, garbage and recycling areas.
- Processing of a Development Permit application to the satisfaction of the Director of Development is a rezoning consideration attached to the subject application.

Conclusion

This rezoning application involves:

- Discharge of the existing Land Use Contract 078 on the southern half of the 9220 No. 3 Road.
- Minor amendment to the OCP Specific Land Use Map to amend the designation of the subject site from "Low-Density Residential" to "Commercial".
- Minor amendments to the Local Commercial (CL) zone to include veterinary service as a permitted use on the subject site only.

- Rezone the subject site to the amended Local Commercial (CL) zone to permit the continued operation of a veterinary service facility.

All technical issues related to the rezoning proposal have been addressed. Additional design detailing and review will be undertaken through the Development Permit application.



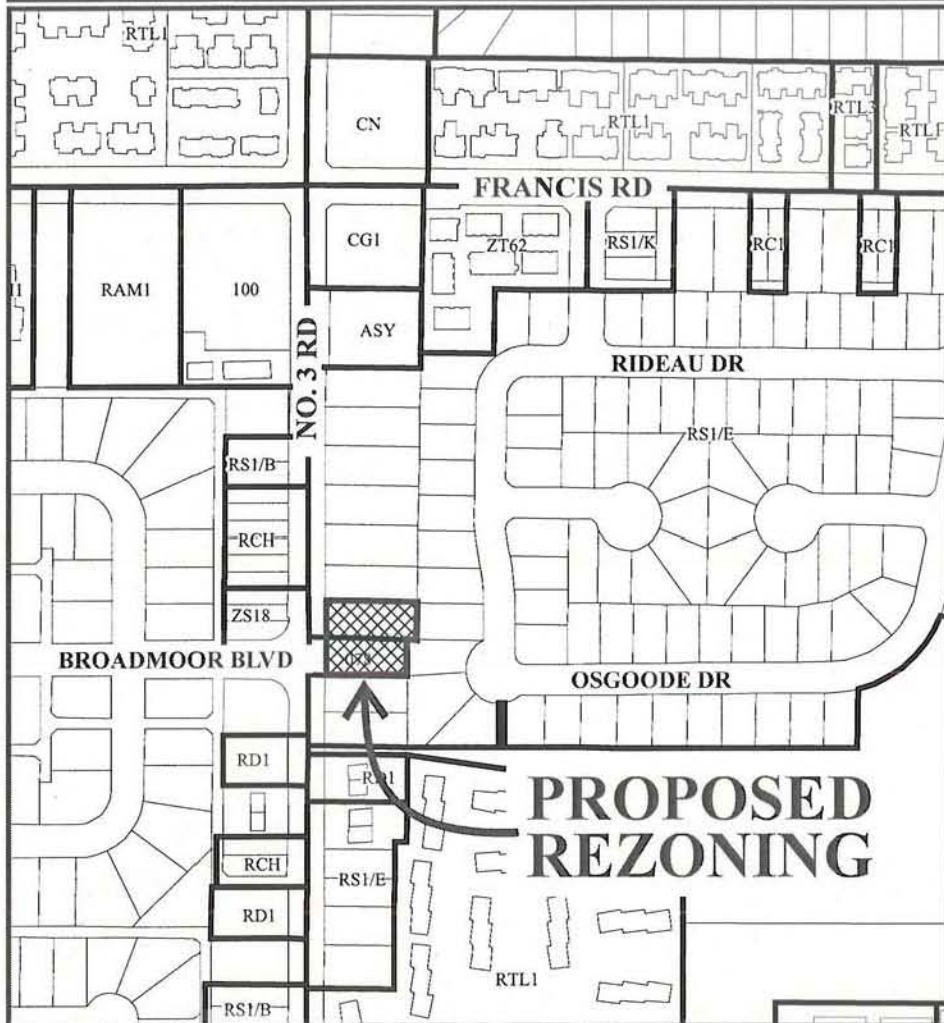
Kevin Eng
Planner 1

KE:rg

- Attachment 1: Location Map
- Attachment 2: Conceptual Development Plans
- Attachment 3: Development Application Data Sheet
- Attachment 4: Tree Survey and Retention Plan
- Attachment 5: Rezoning Considerations Concurrence



City of Richmond



9351 7.19
9311 9.00
9311 9.14
9299 9.14

12.50

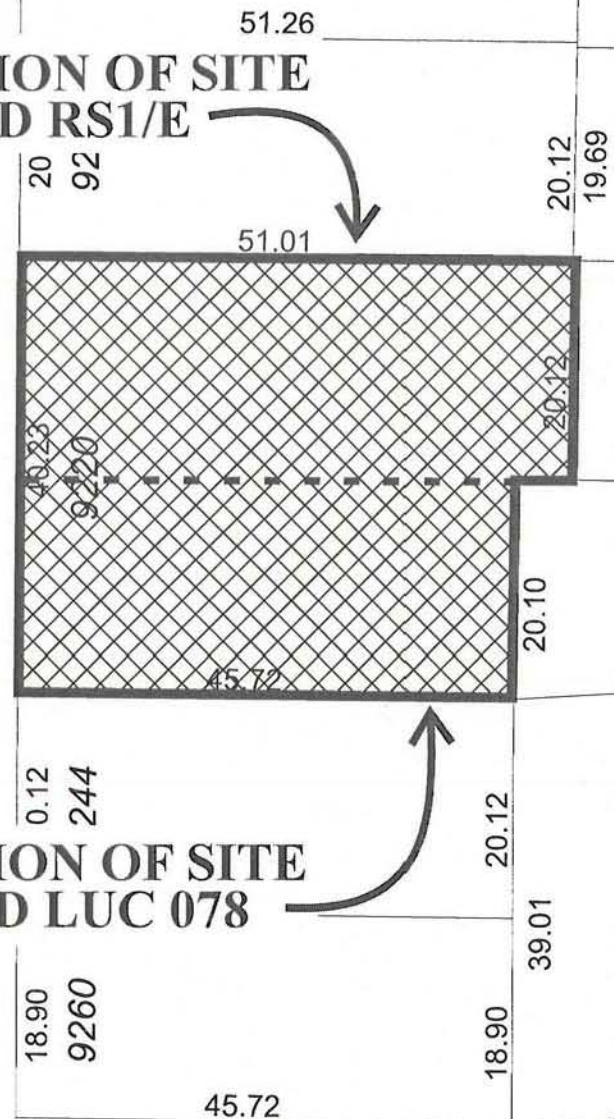
19.64

18.28

**PORTION OF SITE
ZONED RS1/E**

NO. 3 RD

**PORTION OF SITE
ZONED LUC 078**



PH - 23



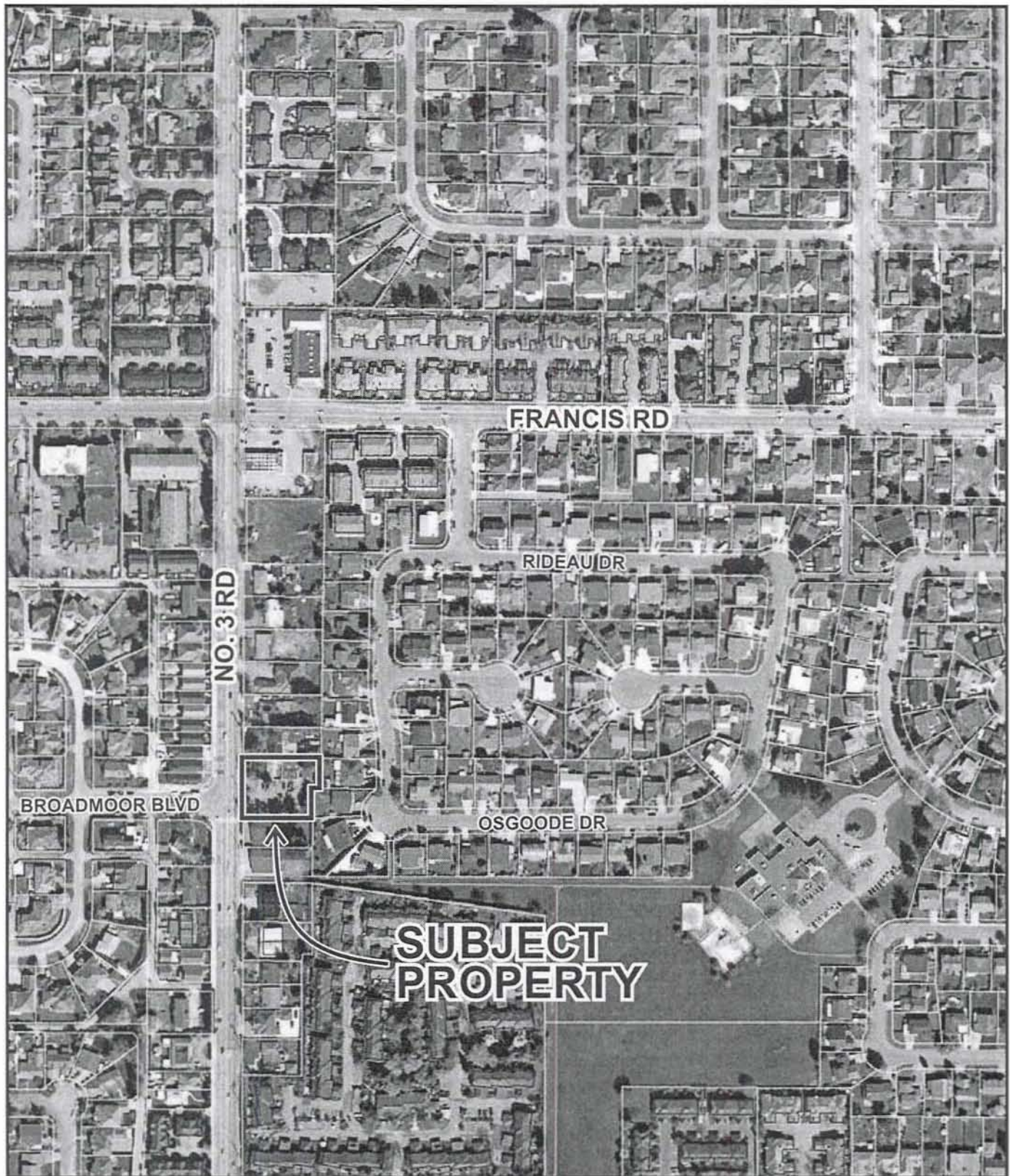
RZ 10-531707

Original Date: 06/09/10

Revision Date: 09/15/11

Note: Dimensions are in METRES

ATTACHMENT 1



RZ 10-531707

Original Date: 06/09/10

Amended Date:

Note: Dimensions are in METRES

Notes:
 All drawings and related documents are the property of
 Studio Elemental and shall remain confidential. No part
 of this drawing shall be reproduced, stored in a retrieval
 system, or transmitted in any form or by any means
 electronic, mechanical, photocopying, recording, or by
 any information storage and retrieval system without the
 prior written permission of Studio Elemental. The
 information contained herein is for the use of the
 recipient only and is not to be distributed to any other
 party without the prior written permission of Studio
 Elemental. All drawings and related documents are the
 property of Studio Elemental and shall remain
 confidential.

100
 plan 385026

studio
 elemental

1691 Berkeley Rd,
 North Vancouver, B.C.
 V7H 1Y9
 604.7252341/778.668.3528
 studioelemental.ca

Issued:
 16 September 11 for recording

revisions:
 #Nov 2009 - client review
 #May 2010 - recording application
 #Aug 2010 client review
 #May 2011 site/outline review
 #August 2011 recording review
 #August 2011 recording review

Richmond Animal
 Hospital
 9220 No3 Rd
 Richmond, BC V7A 1V9

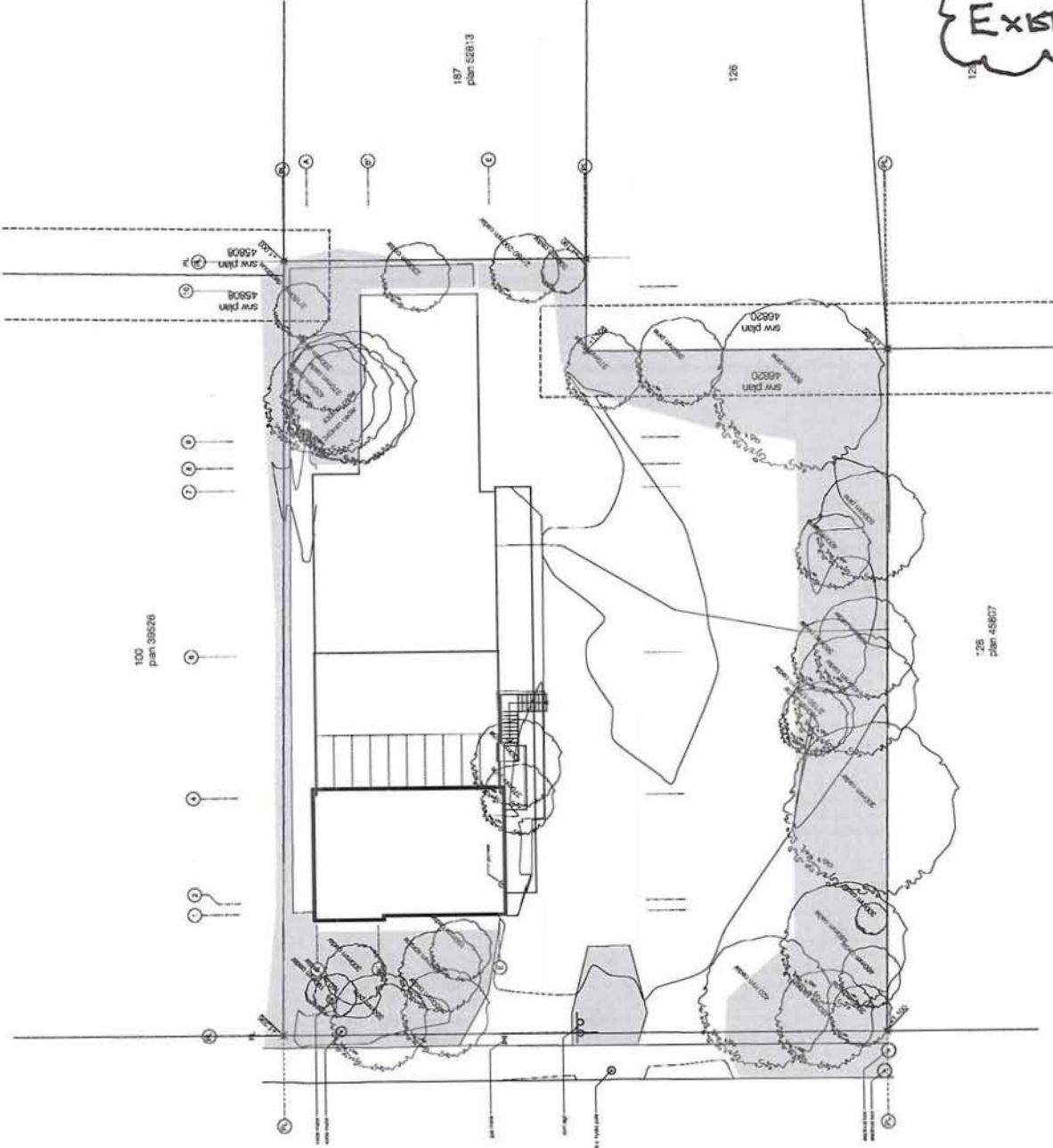
scale
 date 11-09-16
 recording drawing AC / RS

126
 plan 458027

Demolition

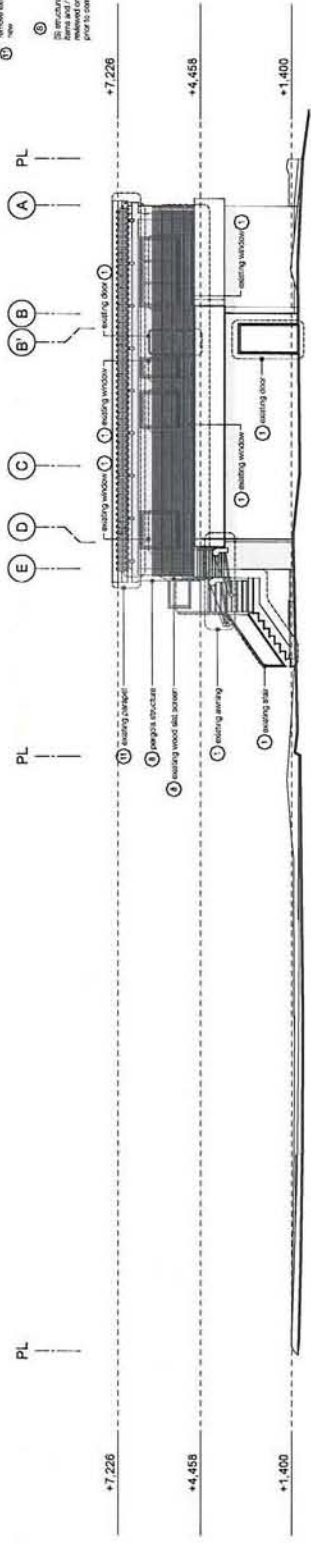
D100
 sheet 5 of 26

EXISTING

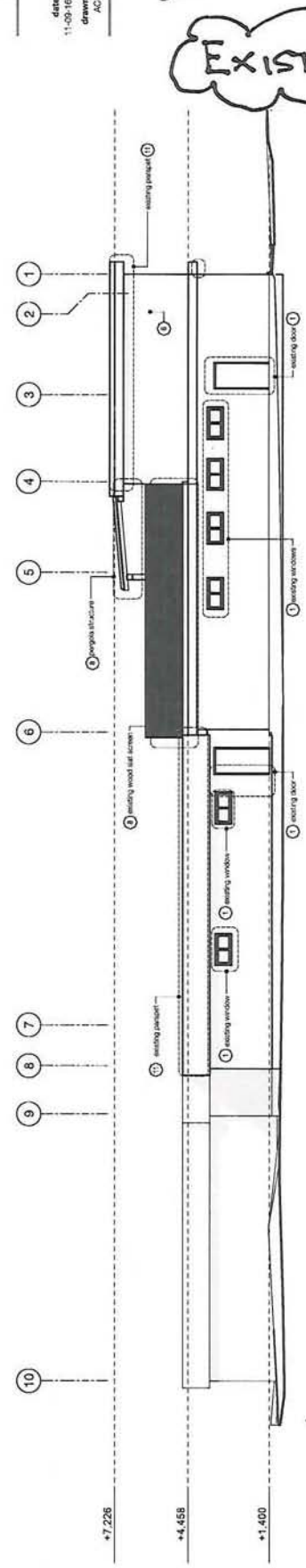


keynotes

- 1 remove and salvage
- 2 remove and salvage
- 3 remove and salvage
- 4 remove and salvage
- 5 remove and salvage
- 6 remove and salvage
- 7 remove and salvage
- 8 remove and salvage
- 9 remove and salvage
- 10 remove and salvage
- 11 remove and salvage
- 12 remove and salvage
- 13 remove and salvage
- 14 remove and salvage
- 15 remove and salvage
- 16 remove and salvage
- 17 remove and salvage
- 18 remove and salvage
- 19 remove and salvage
- 20 remove and salvage
- 21 remove and salvage
- 22 remove and salvage
- 23 remove and salvage
- 24 remove and salvage
- 25 remove and salvage
- 26 remove and salvage
- 27 remove and salvage
- 28 remove and salvage
- 29 remove and salvage
- 30 remove and salvage
- 31 remove and salvage
- 32 remove and salvage
- 33 remove and salvage
- 34 remove and salvage
- 35 remove and salvage
- 36 remove and salvage
- 37 remove and salvage
- 38 remove and salvage
- 39 remove and salvage
- 40 remove and salvage
- 41 remove and salvage
- 42 remove and salvage
- 43 remove and salvage
- 44 remove and salvage
- 45 remove and salvage
- 46 remove and salvage
- 47 remove and salvage
- 48 remove and salvage
- 49 remove and salvage
- 50 remove and salvage
- 51 remove and salvage
- 52 remove and salvage
- 53 remove and salvage
- 54 remove and salvage
- 55 remove and salvage
- 56 remove and salvage
- 57 remove and salvage
- 58 remove and salvage
- 59 remove and salvage
- 60 remove and salvage
- 61 remove and salvage
- 62 remove and salvage
- 63 remove and salvage
- 64 remove and salvage
- 65 remove and salvage
- 66 remove and salvage
- 67 remove and salvage
- 68 remove and salvage
- 69 remove and salvage
- 70 remove and salvage
- 71 remove and salvage
- 72 remove and salvage
- 73 remove and salvage
- 74 remove and salvage
- 75 remove and salvage
- 76 remove and salvage
- 77 remove and salvage
- 78 remove and salvage
- 79 remove and salvage
- 80 remove and salvage
- 81 remove and salvage
- 82 remove and salvage
- 83 remove and salvage
- 84 remove and salvage
- 85 remove and salvage
- 86 remove and salvage
- 87 remove and salvage
- 88 remove and salvage
- 89 remove and salvage
- 90 remove and salvage
- 91 remove and salvage
- 92 remove and salvage
- 93 remove and salvage
- 94 remove and salvage
- 95 remove and salvage
- 96 remove and salvage
- 97 remove and salvage
- 98 remove and salvage
- 99 remove and salvage
- 100 remove and salvage



2 east elevation
scale: 1:75



1 north elevation
scale: 1:75

EXISTING

Demolition

D105
sheet 10 of 26

all drawings and related documents are the property of studio elemental design ltd. and may not be reproduced without written permission. the drawings are for the contractor's use only and are not to be used for any other purpose. the contractor shall be responsible for the accuracy of the information and data provided in the drawings and related documents. drawings are not to be used for any other purpose without the written permission of studio elemental design ltd.

STUDIO ELEMENTAL
1691 Berkeley Rd.
North Vancouver, B.C.
V7H 1Y9
604.7252341/778.668.3528
studioelemental.ca

STUDIO ELEMENTAL

1691 Berkeley Rd.
North Vancouver, B.C.
V7H 1Y9
604.7252341/778.668.3528
studioelemental.ca

issued:
16 September 11 for rezoning

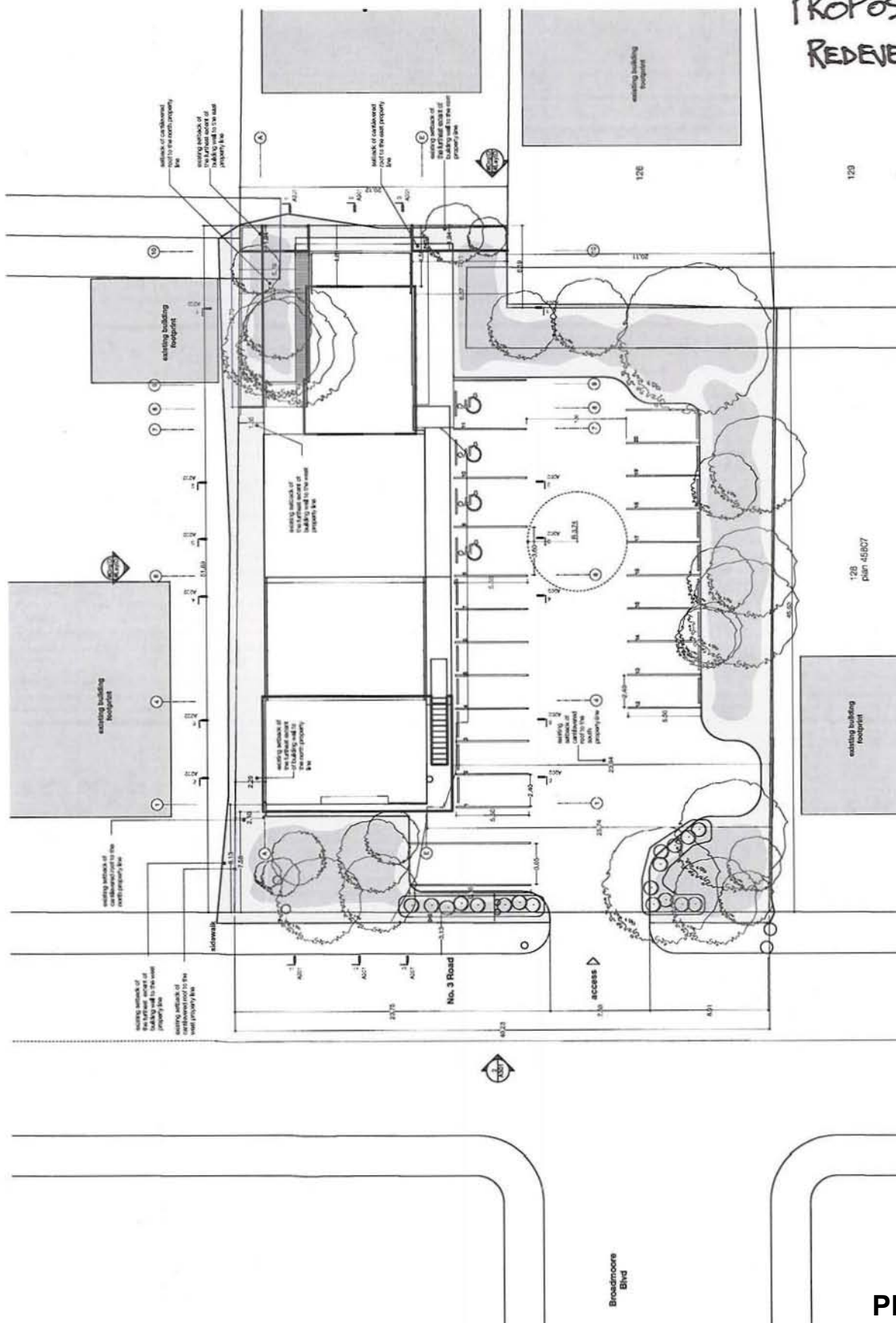
revisions:
#Nov 2009 - client review
#May 2010 - rezoning application
#Aug 2010 client revision
#May 2011 structural review
#August 2011 rezoning review
#August 2011 rezoning review

Richmond Animal Hospital
9220 No3 Rd
Richmond, BC V7A 1V9

date	status	scale
11-09-16	receiving	
Drawn	checked	
AC	AC / RS	

STUDIO ELEMENTAL
1691 Berkeley Rd.
North Vancouver, B.C.
V7H 1Y9
604.7252341/778.668.3528
studioelemental.ca

PROPOSED REDEVELOPMENT



10/10/16
 All drawings and related documents are the property of
 studio elementa and shall remain the property of
 studio elementa. No part of this drawing may be
 reproduced, stored in a retrieval system, or
 transmitted in any form or by any means
 electronic, mechanical, photocopying, recording,
 or by any information storage and retrieval
 system, without the prior written permission of
 studio elementa. The user of this drawing
 shall be deemed to have accepted the terms
 and conditions of use set out in this notice.
 In accordance with the provisions of the
 Copyright Act of 1997, the user of this drawing
 shall be deemed to have accepted the terms
 and conditions of use set out in this notice.

**BUILD FOR
 REZONING**

**studio
 elementa**

1691 Berkeley Rd.
 North Vancouver, B.C.
 V7H 1V9
 604.755.0341 / 778.888.3528
 studioelementa.ca

Issued:
 16 September 11 for rezoning

revisions:
 #Nov 2009 - client review
 #May 2010 - rezoning application
 #Aug 2010 client review
 #May 2011 rezoning review
 #August 2011 rezoning review

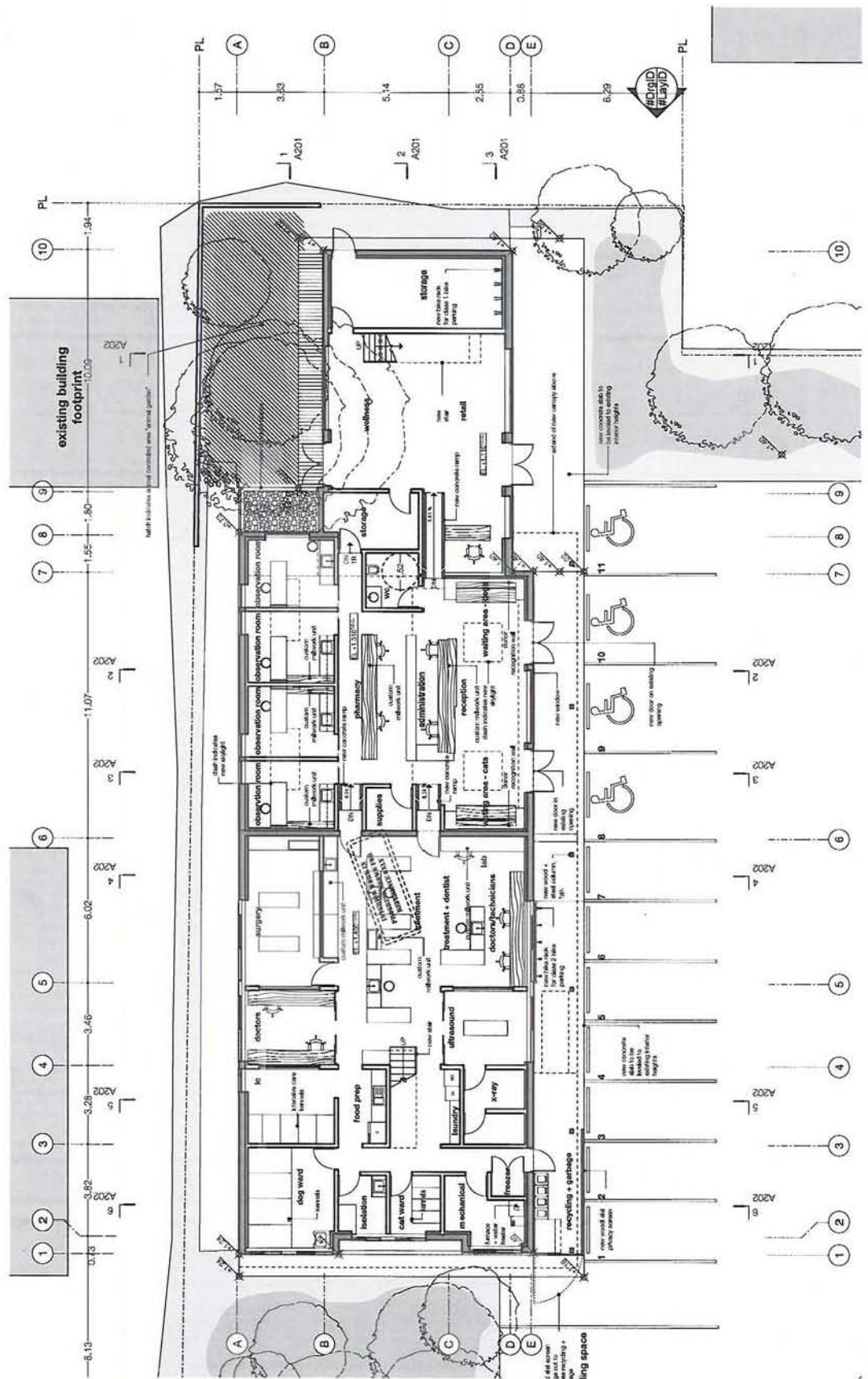
**Richmond Animal
 Hospital**
 9220 N33 Rd
 Richmond, BC V7A 1V9

scale
 date 11-09-16
 status rezoning
 checked AC / RS
 drawn AC

**BUILD FOR
 REZONING**

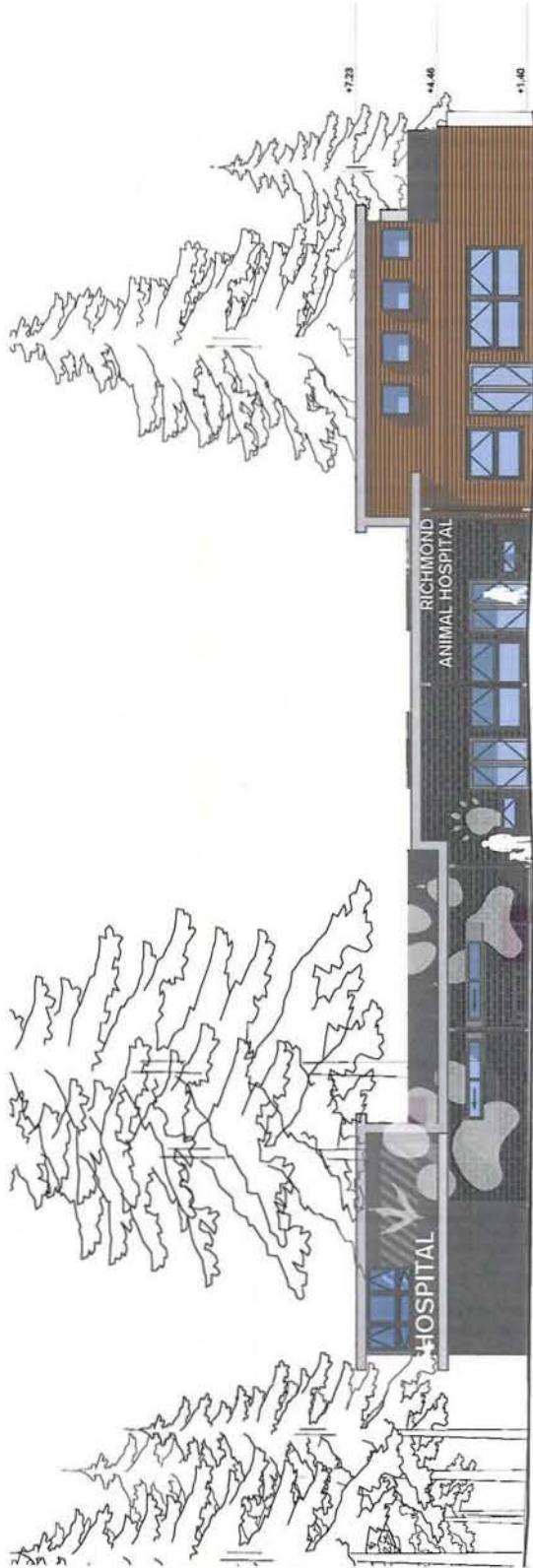
N
 level 1000

A101
 sheet 14 of 26

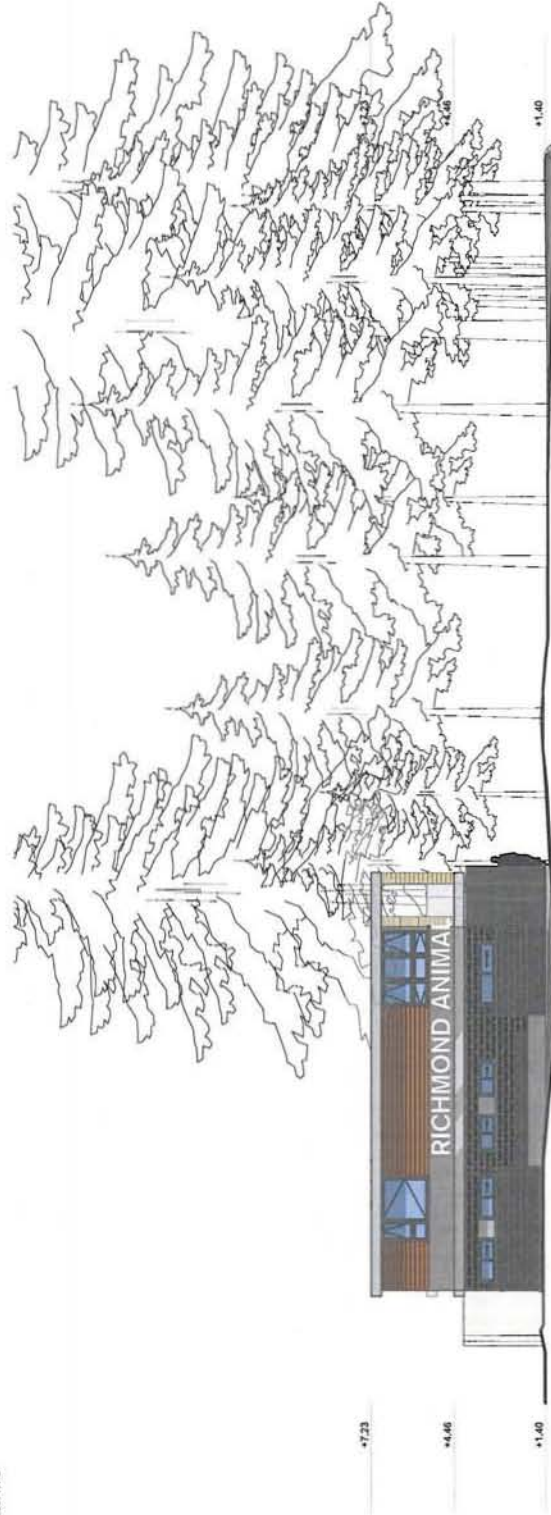


ground level
 scale 1:75

PH - 30



1 south elevation
scale: 1/75



2 west elevation
scale: 1/75

south + west elevations

A301
sheet 16 of 26

100%
all drawings are subject to change without notice and are not to be used for construction without the written approval of the architect. The architect is not responsible for the accuracy of the information provided on these drawings. The architect is not responsible for the accuracy of the information provided on these drawings. The architect is not responsible for the accuracy of the information provided on these drawings.



studio
elemental

1601 Berkeley Rd.
North Vancouver, B.C.
V7N 1T9
604.756.0341/778.668.3328
studioelemental.ca

Issued:
16 September 11 for rezoning

revisions:
#Nov 2009 - client review
#May 2010 - rezoning application
#Aug 2010 client review
#May 2011 rezoning review
#August 2011 rezoning review
#August 2011 rezoning review

Richmond Animal
Hospital
9220 No3 Rd
Richmond, BC V7A 1V9

date	status
11-09-16	rezone
AC	checked
AC / NS	AC / NS





City of Richmond

Bylaw 8820

Richmond Official Community Plan Bylaw 7100 Amendment Bylaw 8820 (RZ 10-531707) 9220 No. 3 Road

The Council of the City of Richmond, in open meeting assembled, enacts as follows:

1. Richmond Official Community Plan Bylaw 7100 is amended by repealing the existing land use designation in Attachment 2 (Specific Land Use Map) to Schedule 1 of the Official Community Plan Bylaw 7100 thereof the following area and by designating it "Commercial".

P.I.D. 003-589-447

Lot 188 Section 28 Block 4 North Range 6 West New Westminster District Plan 52813

2. This Bylaw may be cited as "Richmond Official Community Plan Bylaw 7100, Amendment Bylaw 8820".

FIRST READING

A PUBLIC HEARING WAS HELD ON

SECOND READING

THIRD READING

OTHER REQUIREMENTS

ADOPTED

OCT 11 2011

CITY OF RICHMOND
APPROVED by 
APPROVED by Manager or Solicitor 

MAYOR

CORPORATE OFFICER



**Richmond Zoning Bylaw 8500
Amendment Bylaw 8821 (RZ 10-531707)
9220 NO. 3 ROAD**

The Council of the City of Richmond, in open meeting assembled, enacts as follows:

1. Richmond Zoning Bylaw 8500 is amended by:
 - i. Repealing Section 10.1.3 [Local Commercial (CL)] and replacing it with:

“10.1.3 A. Secondary Uses
 - **home business**
 - **residential security/operator unit****10.1.3 B. Additional Uses (See Section 10.1.11.3)**
 - **veterinary service”**
 - ii. Repealing Section 10.1.11.1 (Other Regulations) and replacing it with:

“10.1.11 Other Regulations
 1. The **residential security/operator unit** must be in the same **building** as the **retail convenience or veterinary service use.**”
 - iii. Inserting the following text into Section 10.1.11:

“3. The following **site is only permitted to be used as a **veterinary service use** and that the uses identified in the Permitted Uses Section (10.1.2) of the **zone** are not permitted on this **site**:**

9220 No. 3 Road
P.I.D. 003-589-447
Lot 188 Section 28 Block 4 North Range 6 West New Westminster District Plan 52813”
2. That the Mayor and Clerk are hereby authorised to execute any documents necessary to discharge “Land Use Contract 078” from the area shown cross-hatched on “Schedule A attached to and forming part of Bylaw 8821”.

3. The Zoning Map of the City of Richmond, which accompanies and forms part of Richmond Zoning Bylaw 8500, is amended by repealing the existing zoning designation of the following area and by designating it **LOCAL COMMERCIAL (CL)**.

P.I.D. 003-589-447

Lot 188 Section 28 Block 4 North Range 6 West New Westminster District Plan 52813

4. This Bylaw may be cited as "**Richmond Zoning Bylaw 8500, Amendment Bylaw 8821**".

FIRST READING

A PUBLIC HEARING WAS HELD ON

SECOND READING

THIRD READING

DEVELOPMENT REQUIREMENTS SATISFIED

ADOPTED

OCT 11 2011

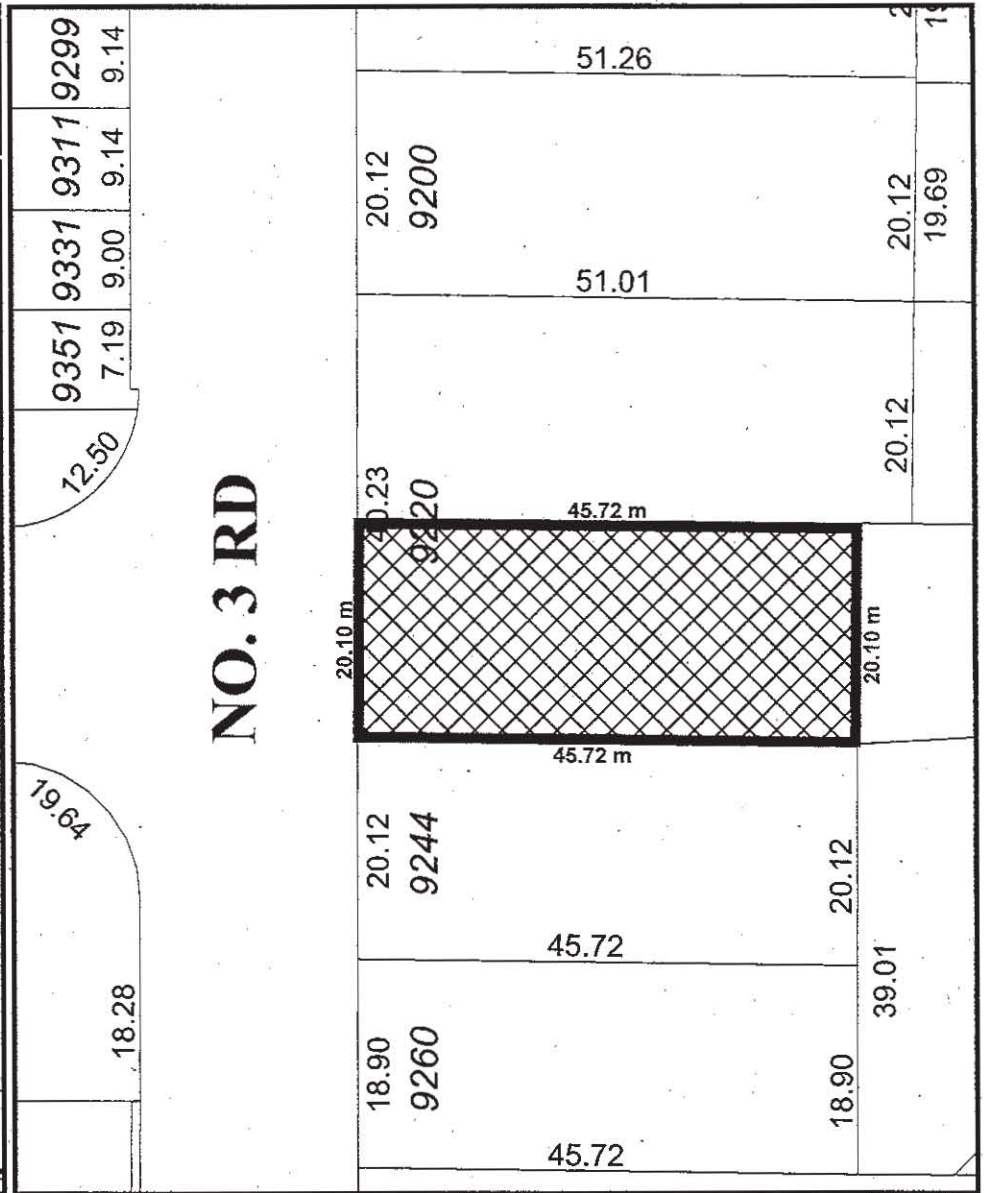
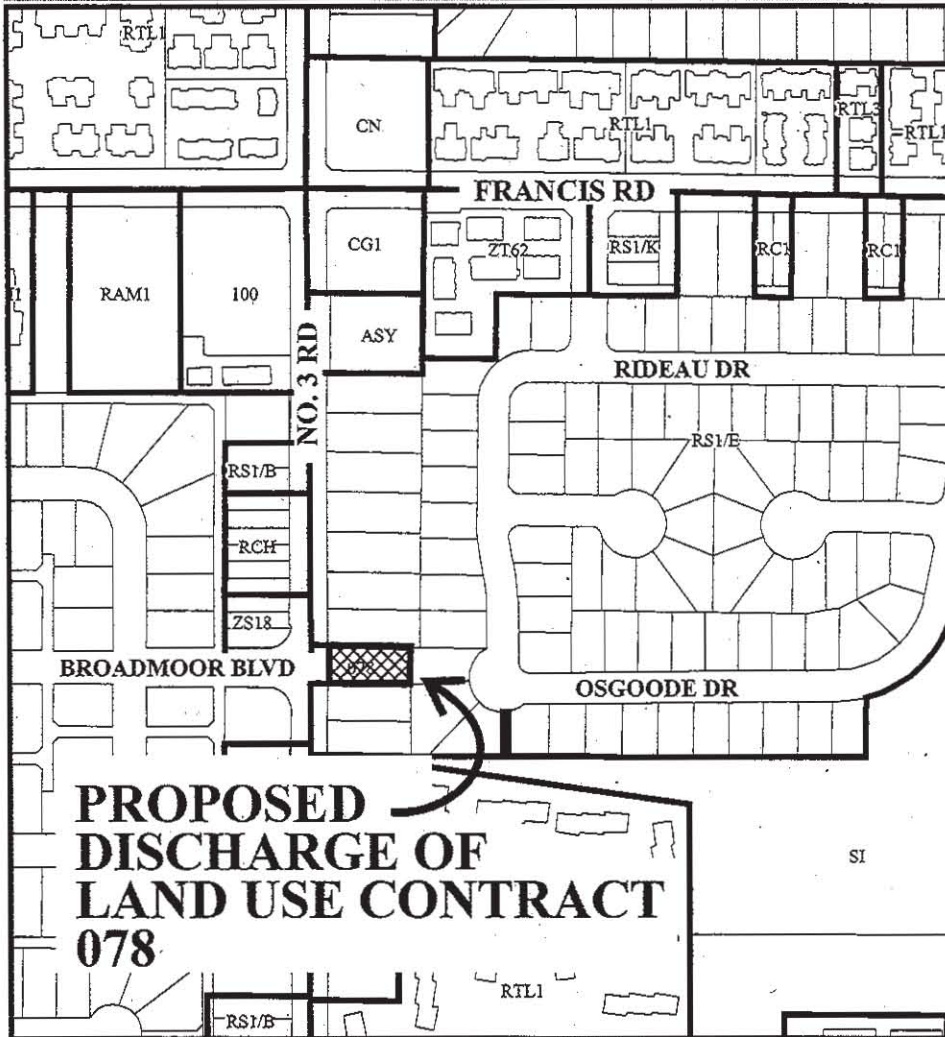


MAYOR

CORPORATE OFFICER



City of Richmond



RZ 10-531707

Original Date: 06/09/10

Revision Date: 09/20/11

Note: Dimensions are in METRES