



**Parks, Recreation and Cultural Services Committee
Electronic Meeting**

**Anderson Room, City Hall
6911 No. 3 Road**

**Tuesday, February 25, 2025
4:00 p.m.**

Pg. # ITEM

MINUTES

PRCS-4 *Motion to adopt the **minutes** of the meeting of the Parks, Recreation and Cultural Services Committee held on January 28, 2025.*



NEXT COMMITTEE MEETING DATE

March 25, 2025, (tentative date) at 4:00 p.m. in the Anderson Room.

PARKS, RECREATION & CULTURE DIVISION

- RICHMOND PUBLIC ART PROGRAM 2024 ANNUAL HIGHLIGHTS AND PUBLIC ART ADVISORY COMMITTEE 2025 WORK PLAN**
(File Ref. No. 11-7000-09-01/2025) (REDMS No. 7931292)

PRCS-7

See Page PRCS-7 for full report

Designated Speaker: Biliana Velkova

**Parks, Recreation and Cultural Services Committee Agenda
Tuesday, February 25, 2025**

Pg. # ITEM

STAFF RECOMMENDATION

That the Richmond Public Art Advisory Committee 2025 Work Plan, as presented in the staff report titled “Richmond Public Art Program 2024 Annual Highlights and Public Art Advisory Committee 2025 Work Plan”, dated February 3, 2025, from the Director, Arts, Culture and Heritage Services, be approved.



2. **ARRIVAL OF THE S.V. TITANIA PAINTING LOAN REQUEST**

(File Ref. No. 11-7000-09-01) (REDMS No. 7882234)

PRCS-14

See Page PRCS-14 for full report

Designated Speaker: Biliana Velkova

STAFF RECOMMENDATION

That the Arrival of the S.V. Titania painting loan request, as described in the staff report titled, “Arrival of the S.V. Titania Painting Loan Request”, dated February 3, 2025, from the Director, Arts, Culture and Heritage Services be approved.



3. **PROPOSED SOUTH DYKE TRAIL ENHANCEMENTS AROUND CROWN PACKAGING**

(File Ref. No. 06-2400-20-SDYK1) (REDMS No. 7922740)

PRCS-18

See Page PRCS-18 for full report

Designated Speaker: Miriam Plishka

STAFF RECOMMENDATION

(1) *That the proposed enhancements and associated impacts for the trail within the statutory right of way over 13800 No. 3 Road, around Crown Packaging, as outlined in the staff report titled “Proposed South Dyke Trail Enhancements around Crown Packaging”, dated February 10, 2025, from the Director, Parks Services, be approved; and*

**Parks, Recreation and Cultural Services Committee Agenda
Tuesday, February 25, 2025**

Pg. # ITEM

- (2) *That staff proceed with the next steps, including an Agricultural Land Commission application and approval, as outlined in the staff report titled “Proposed South Dyke Trail Enhancements around Crown Packaging”, dated February 10, 2025, from the Director, Parks Services.*

4. **BURKEVILLE NEIGHBOURHOOD PARK RENEWAL –
ENGAGEMENT RESULTS AND NEXT STEPS**

(File Ref. No. 06-2345-20-BURK1) (REDMS No. 7904128)

PRCS-27

See Page PRCS-27 for full report

Designated Speakers: Molly Liu & Jason Chan

STAFF RECOMMENDATION

- (1) *That the concept for the playground and sport courts renewal as outlined in the staff report titled “Burkeville Neighbourhood Park Renewal – Engagement Results and Next Steps”, dated February 12, 2025, from the Director, Park Services, be approved; and*
- (2) *That staff proceed with next steps as outlined in the staff report titled “Burkeville Neighbourhood Park Renewal – Engagement Results and Next Steps”, dated February 12, 2025, from the Director, Park Services.*

5. **MANAGER’S REPORT**

ADJOURNMENT



Parks, Recreation and Cultural Services Committee

Date: Tuesday, January 28, 2025

Place: Anderson Room
Richmond City Hall

Present: Councillor Chak Au, Chair
Councillor Michael Wolfe
Councillor Laura Gillanders
Councillor Andy Hobbs
Councillor Bill McNulty

Also Present: Councillor Carol Day

Call to Order: The Chair called the meeting to order at 4:00 p.m.

MINUTES

It was moved and seconded
That the minutes of the meeting of the Parks, Recreation and Cultural Services Committee held on December 18, 2024, be adopted as circulated.

CARRIED

The Chair advised that Update on Bark Park will be considered as Item 3A.

DELEGATION

1. With the aid of a PowerPoint presentation (copy on file, City Clerk’s Office) Jane Fernyhough and Paul Dufour, representing the Richmond Arts Coalition (RAC) Board, presented their annual report and spoke on 2024 activities, collaborations, grant funding received and upcoming events in 2025.

Discussion ensued with respect to (i) supporting the arts, (ii) funding avenues for the Richmond Maritime Festival, and (iii) partnering with Business Network International (BNI) to increase network and business support for events.

Parks, Recreation & Cultural Services Committee
Tuesday, January 28, 2025

It was directed that the RAC presentation be forwarded to the February 10, 2025 Council meeting.

COMMUNITY SERVICES DIVISION

2. 2025 COMMUNITY MURAL PROGRAM PROJECTS

(File Ref. No. 11-7000-09-20-255) (REDMS No. 7841778)

In response to queries from Committee, staff advised that (i) MacNeil Secondary has contributed \$5,000 to the MacNeil Secondary School Mural, funded through the school Parent Advisory Council (PAC), (ii) the City applied for funding for the Minoru Park Practice Tennis Wall mural on behalf of the users of the park, (iii) since 2018, the City has installed 28 murals, of which 27 are still in good condition, and (iv) murals installed through the Community Public Art program are designed to last at least 5 years, but they generally last longer.

It was moved and seconded

- (1) *That the 2025 Community Mural Program Projects as presented in the staff report titled "2025 Community Mural Program Projects", dated January 6, 2025, from the Director, Arts, Culture and Heritage Services, be approved; and*
- (2) *That external contributions received for the 2025 Community Mural Program Projects be added to the project budget and included as an amendment to the Consolidated 5-Year Financial Plan (2025-2029).*

CARRIED

3. STEVESTON HISTORIC SITES BUILDING COMMITTEE REVISED TERMS OF REFERENCE

(File Ref. No. 11-7000-01) (REDMS No. 7840807)

In response to queries from Committee, staff advised that (i) staff will bring forward the terms of reference for the First Nations Building Committee at a later date, (ii) both the Steveston Historic Sites Building Committee and the First Nations Building Committee will be updated on each other's activities, (iii) the intention of including the Scotch Pond in the terms of reference is related to any facility work happening at the building such as future restoration projects, and (iv) key changes to the terms of reference include updating the list of buildings that are included under the scope of this committee to accurately reflect current and upcoming projects, a change in the staff liaison, appointment of two Council liaisons and updated code of conduct language.

Parks, Recreation & Cultural Services Committee
Tuesday, January 28, 2025

It was moved and seconded

That the Steveston Historic Sites Building Committee revised Terms of Reference as detailed in the staff report, "Steveston Historic Sites Building Committee Revised Terms of Reference", dated January 6, 2025, from the Director, Arts, Culture and Heritage be approved.

CARRIED

3A. UPDATE ON BARK PARK

(File Ref. No. 11-7000-01) (REDMS No. 7840807)

Staff provided an update on the Bark Park noting that (i) the park is on target to open in Spring 2025, (ii) the construction is continuing as scheduled including the multi-use pathway and fencing, and (iii) no additional trees have been added at this time but staff will evaluate if there is a need for additional trees.

4. MANAGER'S REPORT

(i) Proposed Locations for the Covered Shelter Lacrosse Box

Staff advised that work will be done this year to further refine the request for the covered sports box and a report will be brought forward to Council for location consideration. It was further noted that members of the public can contact Parks staff to suggest a potential location for the box.

ADJOURNMENT

It was moved and seconded

That the meeting adjourn (4:39 p.m.).

CARRIED

Certified a true and correct copy of the Minutes of the meeting of the Parks, Recreation and Cultural Services Committee of the Council of the City of Richmond held on January 28, 2025.

Councillor Chak Au
Chair

Raman Grewal
Legislative Services Associate



City of Richmond

Report to Committee

To: Parks, Recreation and Cultural Services Committee **Date:** February 3, 2025

From: Marie Fenwick, Director, Arts, Culture and Heritage Services **File:** 11-7000-09-01/2025-Vol 01

Re: **Richmond Public Art Program 2024 Annual Highlights and Public Art Advisory Committee 2025 Work Plan**

Staff Recommendation

That the Richmond Public Art Advisory Committee 2025 Work Plan, as presented in the staff report titled “Richmond Public Art Program 2024 Annual Highlights and Public Art Advisory Committee 2025 Work Plan”, dated February 3, 2025, from the Director, Arts, Culture and Heritage Services, be approved.

CM Fenwick

Marie Fenwick
 Director, Arts, Culture and Heritage Services
 (604-276-4288)

Att. 1

REPORT CONCURRENCE	
CONCURRENCE OF GENERAL MANAGER	
<i>BJ. S</i>	
SENIOR STAFF REPORT REVIEW	INITIALS: <i>JB</i>
APPROVED BY CAO	
<i>Seven</i>	

Staff Report

Origin

The Council-approved Richmond Public Art Program Policy 8703 and Terms of Reference for the Richmond Public Art Advisory Committee (RPAAC) indicate that the RPAAC provides advice and acts as a resource to City Council and staff on the City's Public Art Program.

This report presents the 2024 highlights of the Richmond Public Art Program to Council for information and the proposed RPAAC 2025 Work Plan found in Attachment 1 for approval.

This report supports Council's Strategic Plan 2022-2026 Focus Area #1 Proactive in Stakeholder and Civic Engagement:

Proactive stakeholder and civic engagement to foster understanding and involvement and advance Richmond's interests.

This report supports Council's Strategic Plan 2022-2026 Focus Area #6 A Vibrant, Resilient and Active Community:

Vibrant, resilient and active communities supported by a wide variety of opportunities to get involved, build relationships and access resources.

Analysis

Richmond Public Art Program

The Public Art Program plays a key role in shaping, animating and enriching public space, instilling civic pride and contributing to community identity. Artwork placed in the public realm has the power to engage the community, celebrate culture, and broaden the diversity of arts experiences and opportunities. It serves as an educational resource to expand public awareness and understanding of the arts, stimulates conversations, strengthens and supports the arts community, and inspires creativity.

Since Council's adoption of the initial Public Art Program Policy in 1997, the Public Art Program's collection has grown to a total of 446 works of art with 356 currently on display throughout Richmond. Documentation of public art that is performance-based or otherwise ephemeral in nature is archived on the Public Art Program section of the City website.

Public art adds value to public and private development, enriches the public realm for residents and visitors while advancing Richmond's standing as a model for high quality urban development. The City provides leadership in integrating public art with major civic facilities as well as small-scale public infrastructure. The Private Development Public Art program provides an avenue for developers to contribute to creating a liveable and desirable place to live, work and play. The Community Public Art Program engages Richmond residents in art making, discussions and public events. The Public Art Education Program provides learning opportunities for both the general public and both emerging and professional artists.

2024 Richmond Public Art Program Highlights

The following represents the key activities and achievements of the City's Public Art Program through civic, community, private development and educational programs in 2024:

- Through the Richmond Community Mural Program, eight new murals were completed throughout Richmond:
 - *Summer Joys* by Otilia Spantulescu at Tait Park Trail Washroom;
 - *In Tandem* by Ciele Beau at London Landing Trail Washroom;
 - *A Walk in the Park* by Fiona Tang at Terra Nova Park Trail Washroom;
 - *Birding on the Fraser* by Phil Phil Studio at No 3 Road Pier Trail Washroom;
 - *Grandparents* by Jean Bradbury at Cook Elementary School;
 - *Growing* by Anaïs Lera at École Secondaire Hugh McRoberts Secondary School;
 - *Gathering Pond* by Carolyn Wong at Minoru Arenas; and
 - *Postcards from Steveston* by Mark Anderson at Steveston Harbour Authority.
- Works by six Richmond artists were featured at the No. 3 Road Art Columns located at Aberdeen and Lansdowne Canada Line Stations.
- One work was installed through the Civic Public Art Program: *Seasons of Colour* by Laura Kwok at the Richmond Cultural Centre Annex.
- Three community engagement projects were completed as part of the Engaging Artists in Community Program:
 - *Hidden Stories of the Bioverse* by Andrea Hoff with Dixon Elementary School, in partnership with Engineering Sustainability;
 - *Visions of Biophilia* by Desirée Patterson with Richmond Nature Park, in partnership with Richmond Nature Park Society; and
 - *Express Yourself* by Keely O'Brien in partnership with Aspire Richmond, in partnership with Richmond Public Library.
- Two new works were installed through the Private Development Public Art Program:
 - *Otto Finch House* by Christian Giroux and Daniel Young at 8119 Park Road; and
 - *As It Once Was* by Desirée Patterson at 4899 Vanguard Road.
- Three Public Art tours were offered:
 - Indigenous Public Art Bus Tour for National Indigenous Peoples' Day;
 - Capstan Village Public Art Walking Tour during Culture Days; and
 - City Centre Public Art Bus Tour for seniors for National Seniors' Day.
- 18 traffic cabinets and two utility boxes were wrapped with works by Richmond artists.
- One photo-based work was installed at Aberdeen Canada Line.

- As part of the Art at Work professional development program, four free workshops were offered through Public Art: Tax Basics for Artists, Applying for Public Art Calls (Level 1 and Level 2) and Applying for Public Art Calls Writing Workshop.
- 17 Richmond artists were contracted for Public Art commissions.

2024 Richmond Public Art Advisory Committee Highlights

In 2024, RPAAC provided informed advice to staff and Council on a range of projects. Highlights include:

- Nine monthly meetings with high attendance;
- Participation in educational opportunities and public events, such as the annual RPAAC Public Art Tour and unveiling of public art works;
- Reviews and recommendations on private development public art project plans and monthly updates on Advisory Design Panel reviews;
- Input to staff on civic Artist Calls; and
- Observing roles at civic and private public art selection panel meetings.

2025 Richmond Public Art Advisory Committee Work Plan

The Richmond Public Art Advisory Committee's 2025 Work Plan (Attachment 1) outlines the proposed activities for the volunteer committee in 2025. The Work Plan was reviewed by the Richmond Public Art Advisory Committee on January 21, 2025.

As a Council-appointed Advisory Committee, RPAAC advises on all aspects of public art policy, planning, education and promotion, including the allocation of funds from the City's designated Public Art Reserve. Highlights of the 2025 Work Plan are noted below:

- Raise awareness and understanding of the importance of public art in the City through promotion and participation in educational opportunities and public events;
- Advise on strategies, policies and programs to achieve excellence in art in the public realm including researching best practices and advising on opportunities for artists;
- Propose and support City programs, initiatives and events that advance public art in the City including Lulu Speaker Series, Doors Open Richmond and Culture Days;
- Review and, through staff reports, provide recommendations to Council on public art project plans developed by City staff and private development public art consultants; and

- Provide input to staff in the development of an annual Public Art Program report to Council, including an RPAAC annual work plan.

Members of the 2025 Richmond Public Art Advisory Committee:

- Bronwyn Bailey, Vice-Chair
- Sabrina Bhojani
- Ceri Chong
- Paul Dufour, Chair
- Victoria Grigorenko
- Jose Larano
- Michelle Li
- Allison Liu
- Jerome Teo
- Council Representative: Kash Heed
- Staff Liaison: Biliana Velkova
- Recording Secretary: Sabina Sutherland


Financial Impact

None.

Conclusion

It is recommended that Council approve the Richmond Public Art Advisory Committee 2025 Work Plan.

Public art animates the built and natural environment with meaning, contributing to a vibrant city in which to live, work and visit. The 2024 highlights of the Richmond Public Art Program and proposed Public Art Advisory Committee 2025 Work Plan demonstrate a high level of professionalism, volunteerism and commitment to quality public art in Richmond.



Biliana Velkova
Public Art Planner
(604-247-4612)

Att. 1: Richmond Public Art Advisory Committee 2025 Work Plan

Richmond Public Art Advisory Committee 2025 Work Plan

The RPAAC 2025 Work Plan is based on the Terms of Reference for the Committee and is proposed as follows:

Initiative	Actions	Expected Outcomes
1. Raise awareness and understanding of the importance of public art in the City		
a. Public involvement in the selection process for public art	Encourage community members to participate on public art selection panels through an open call for volunteers.	Richmond residents are involved in civic and community cultural life.
b. Education and professional development for RPAAC members (workshops, bus tours, local conferences and symposiums)	Identify and register for professional development opportunities and City programs (such as Art at Work).	Develop and expand knowledge of best practices.
c. Guest speakers for RPAAC meetings	Identify key guest speakers for RPAAC meetings for 2025.	RPAAC members are better informed on public art issues and equipped to share this information with Council, as and when requested.
d. Support public art communication platforms	Promote existing and future platforms (mobile, print and web) that showcase the Public Art Collection.	Public better informed about the public art collection, location, and artists.
2. Advise on strategies, policies and programs to achieve excellence in art in the public realm		
a. Program Policy and Best Practices	Participate in review processes and, as needed, identify and prioritize potential research on policy and administration.	Policy and administrative procedures are reviewed.
b. Terms of Reference (TOR) and Selected Artworks for Civic Projects	Provide advice and recommendations to staff regarding Terms of Reference and selected artworks.	TOR and selected artworks are reviewed by RPAAC prior to Council review.

2. Advise on strategies, policies and programs to achieve excellence in art in the public realm (continued)		
c. Community Public Art Programs	Advise on development and implementation of the Community Public Art Programs.	High quality Community Public Art Program is developed and maintained.
d. Artwork conservation, de-commissioning and maintenance of the Civic Public Art Collection	Review as required.	Public art collection is well maintained.
e. RPAAC representation on public art juries for Civic projects	Represent RPAAC on public art juries for Civic projects as observers.	Policy and administrative procedures are followed to ensure fair and transparent process to achieve excellence in art in the public realm.
3. Support City programs, initiatives and events that advance public art in the City		
a. Promote Public Art	Encourage community members to engage with Public Art through City programs (such as Culture Days, Doors Open, etc.).	Enhance community connection and awareness of public art.
4. Review and submit recommendations on private development public art plans		
a. Private Development Public Art Plans including TOR for public art projects	Review private development public art plans.	Provide advice and recommendations to consultants and staff.
b. RPAAC representation on public art juries for private projects	Represent RPAAC on public art juries for private projects as observers.	Policy and administrative procedures are followed to ensure fair and transparent process to achieve excellence in art in the public realm.



City of Richmond

Report to Committee

To: Parks, Recreation and Cultural Services Committee **Date:** February 3, 2025

From: Marie Fenwick, Director, Arts, Culture and Heritage Services **File:** 11-7000-09-01/2024-Vol 01

Re: ***Arrival of the S.V. Titania Painting Loan Request***

Staff Recommendation

That the *Arrival of the S.V. Titania* painting loan request, as described in the staff report titled, "*Arrival of the S.V. Titania Painting Loan Request*", dated February 3, 2025, from the Director, Arts, Culture and Heritage Services be approved.

CM Fenwick
 Marie Fenwick
 Director, Arts, Culture and Heritage Services
 (604-276-4288)

Att. 1

REPORT CONCURRENCE	
CONCURRENCE OF GENERAL MANAGER	
<i>BJF</i>	
SENIOR STAFF REPORT REVIEW	INITIALS:
	<i>AB</i>
APPROVED BY CAO	
<i>Green</i>	

Staff Report

Origin

The purpose of this report is to seek Council endorsement for the temporary loan of the *Arrival of the S.V. Titania* painting in response to a request from the artist John Horton.

The artist has asked to borrow the painting for a retrospective exhibition of his work to be presented at the Maritime Museum of British Columbia in Victoria from March 31 to June 2, 2025.

This report supports Council's Strategic Plan 2022-2026 Focus Area #6 A Vibrant, Resilient and Active Community:

Vibrant, resilient and active communities supported by a wide variety of opportunities to get involved, build relationships and access resources.

Analysis

Background

At the regular Council meeting on January 9, 2017, Council directed staff to commission a painting, funded through the Council Provision, by John M. Horton to commemorate Canada's 150th anniversary of Confederation. The painting depicts the first docking of the Hudson's Bay Company sailing ship, S.V. Titania, at the Britannia Cannery wharf in 1889. The work was officially unveiled on May 23, 2017, and remains on display near the entrance to Council Chambers. (Attachment 1)

John M. Horton is a well-known maritime painter and was a long-time resident of Richmond before moving to Delta. Born in England, he immigrated to Canada in 1966 to establish an architectural rendering practice and eventually began taking on commissions of tugs, freighters, fishing boats and naval vessels. Today, his paintings are in collections all over the world. Horton is an official Canadian naval war artist and a member of the Canadian Society of Marine Artists, the Federation of Canadian Artists and the Honorable Company of Master Mariners of Canada.

The *Arrival of the S.V. Titania* (oil on board, 24" x 35") was commissioned by the City of Richmond in 2017 at a cost of \$50,000.

Maritime Museum of British Columbia Exhibition

The exhibition, entitled *John Horton's Art from 9 to 90* will take place between March 31 and June 2, 2025, at the Maritime Museum of British Columbia in Victoria.

The Maritime Museum of British Columbia engages people with the maritime culture and history of the Pacific Northwest through rotating exhibits, educational and community-based programs and research services.

Next Steps

Should Council endorse the loan of the *Arrival of the S.V. Titania* for the purposes of this temporary exhibition, staff will follow standard best practices for loaning works of art for exhibition elsewhere. This will include:

- A signed lending agreement between the City of Richmond and the artist;
- Condition assessments prior to the work being moved and upon its return;
- Confirmation of appropriate packaging and shipping arrangement; and
- Proof of appropriate insurance coverage for the value of the painting.

For the period of the artwork's absence from City Hall, a work of art from the Richmond Art Gallery permanent collection will be hung in its place with a notice that the *Arrival of the S.V. Titania* is temporarily on loan.

Financial Impact

None. All costs associated with the art loan as outlined in the lending agreement will be covered by the borrower.

Conclusion

It is recommend that Council endorse the temporary loan of the *Arrival of the S.V. Titania* painting to artist John Horton for the purposes of a temporary exhibition at Maritime Museum of British Columbia.

Arrival of the S.V. Titania painting serves as an homage to an important milestone that took place in Steveston, as well as a legacy piece to commemorate Canada's 150 anniversary of Confederation. Council's endorsement is sought to lend this valuable artwork to the Maritime Museum of BC for the purposes of a retrospective exhibition for the artist, John M. Horton.


Biliana Velkova
Public Art Planner
(604-247-4612)

Att. 1: *Arrival of the S.V. Titania* painting installed in Richmond City Hall



Arrival of S.V. Titania Painting at Richmond City Hall



City of Richmond

Report to Committee

To: Parks, Recreation and Cultural Services Committee **Date:** February 10, 2025

From: Todd Gross, Director, Parks Services **File:** 06-2400-20-SDYK1/Vol 01

Re: **Proposed South Dyke Trail Enhancements around Crown Packaging**

Staff Recommendations

1. That the proposed enhancements and associated impacts for the trail within the statutory right of way over 13800 No. 3 Road, around Crown Packaging, as outlined in the staff report titled "Proposed South Dyke Trail Enhancements around Crown Packaging", dated February 10, 2025, from the Director, Parks Services, be approved; and
2. That staff proceed with the next steps, including an Agricultural Land Commission application and approval, as outlined in the staff report titled "Proposed South Dyke Trail Enhancements around Crown Packaging", dated February 10, 2025, from the Director, Parks Services.

Todd Gross
Director, Parks Services
(604-247-4942)

Att. 3

REPORT CONCURRENCE		
ROUTED TO:	CONCURRENCE	CONCURRENCE OF GENERAL MANAGER
Engineering	<input checked="" type="checkbox"/>	
Transportation	<input checked="" type="checkbox"/>	
Public Works	<input checked="" type="checkbox"/>	
Climate and Environment	<input checked="" type="checkbox"/>	
Finance	<input checked="" type="checkbox"/>	
SENIOR STAFF REPORT REVIEW	INITIALS: 	APPROVED BY CAO

Staff Report

Origin

At the Parks, Recreation and Cultural Services Committee meeting held on May 28, 2024, staff presented the report titled, “No. 3 Road Bark Park Proposed Enhancements Update”. As a result of the discussion, several motions were put forward and adopted, including the following:

That staff further analyze the impacts and costs of widening the existing trail located within the statutory right of way over 13800 No. 3 Road, around Crown Packaging and report back.

The purpose of this report is to respond to the above referral, outline proposed enhancements to the existing trail within the statutory right of way over 13800 No. 3 Road, around Crown Packaging, provide an overview of the associated impacts and costs and outline next steps for Council consideration.

The other remaining referrals regarding potential reduced speeds along nearby roadways will be reported on at an upcoming Public Works and Transportation Committee meeting.

This report supports Council’s Strategic Plan 2022–2026 Focus Area #5 A Leader in Environmental Sustainability:

Leadership in environmental sustainability through innovative, sustainable and proactive solutions that mitigate climate change and other environmental impacts.

5.2 Support the preservation and enhancement of Richmond’s natural environment.

This report supports Council’s Strategic Plan 2022–2026 Focus Area #6 A Vibrant, Resilient and Active Community:

Vibrant, resilient and active communities supported by a wide variety of opportunities to get involved, build relationships and access resources.

6.1 Advance a variety of program, services, and community amenities to support diverse needs and interests and activate the community.

6.2 Enhance the City’s network of parks, trails and open spaces.

Background

The trail located within the statutory right of way over 13800 No. 3 Road, around Crown Packaging, is part of the broader South Dyke Trail network. The South Dyke Trail is comprised of a series of multi-use trails stretching from the south end of No. 2 Road to the Shell Road trail, Horseshoe Slough trail and beyond. Given its relatively remote location along the South Arm of the Fraser River, the South Dyke Trail is rural in character. It is an average width of three metres and is predominantly finished in gravel. The trail offers links to a number of key destinations such as London Farm, No. 3 Road Fishing Pier, No. 3 Road Bark Park and Woodwards Slough. It is

identified as a recreational trail in the City's Cycling Network Plan and a key part of Metro Vancouver's Regional Greenway Network. The South Dyke Trail also serves as a connection for commuter cyclists traveling to and from the George Massey Tunnel Interchange Shuttle for Cyclists. The trail is used by a broad range of cyclists, pedestrians and rollers of all ages and abilities for recreation, sport, and transportation purposes. See Attachment 1: South Dyke Trail.

The sections of the South Dyke Trail to the west and north of Crown Packaging are located within a statutory right of way (SRW) over the privately owned property located at 13800 No. 3 Road. Both the property and SRW are located within the Agricultural Land Reserve (ALR). The SRW is for the purposes of public rights of passage and ranges from approximately eight to 16 metres wide. Modifications to the SRW would not be required in order to accommodate the proposed trail improvements.

The existing trail within the SRW is approximately 625 metres long and provides a connection between the multi-use riverfront dyke trail to the west, as well as Garden City Road and Woodward's Slough to the east. It is located adjacent to environmentally sensitive areas, ditches, swales, farm operations and industrial use (Crown Packaging). The surface of the existing trail is predominantly gravel and ranges from 1.8 to three metres wide. The trail currently permits use by dogs on-leash, walkers, joggers, rollers (wheelchairs and strollers), and cyclists. The trail was upgraded within the last five years when the surface was refinished with fresh gravel and regraded to address drainage issues.

The narrowest section of the trail, which is 1.8 metres wide, poses the greatest safety risk due to its narrow width for a multi-use path and close proximity to a major drainage ditch. This section of trail (pinch point) is located on the west side of Crown Packaging. See Attachment 2: South Dyke Trail around Crown Packaging – Existing Conditions.

Analysis

Proposed Trail Enhancements – Analysis and Impacts

The proposed trail enhancements are intended to improve safety for users along the narrowest section of the trail (pinch point). Planned improvements at this location include engineered bank stabilization along the adjacent drainage ditch, widening the trail to 2.5 to three metres, and installing a safety fence to prevent accidental falls into the ditch. Additional general enhancements will include surface improvements and signage along the trail. For further details, refer to Table 1: Summary of Proposed Trail Enhancements and Impacts below, as well as Attachment 3.

In response to the referral regarding trail widening stemming from the Parks, Recreation and Cultural Services meeting held on May 28, 2024, key considerations such as site impacts, environmentally sensitive areas, design and permitting requirements, timeframes and the cost to implement the proposed trail enhancements have been explored and analyzed. See Table 1, Summary of Proposed Trail Enhancements and Impacts.

Table 1. Summary of Proposed Trail Enhancements and Impacts	
Item	Summary/Description
Proposed Trail Enhancements	<ul style="list-style-type: none"> • Prioritizing widening and enhancing safety along the narrowest section of the trail (pinch point). • Improved gravel trail surface to ensure an even and consistent finish. • Incorporation of identity and etiquette signage. • Stabilization along the drainage ditch bank and trail edge, to accommodate trail improvements. • Improved safety measures, such as fencing between the stabilized drainage ditch and enhanced trail. • Collaboration with the adjacent property owner of the Crown Packaging site for potential chain-link fence repairs and improvements.
Tree and Environmental Impacts	<ul style="list-style-type: none"> • Tree retention and protection would be prioritized, however removal of 3–5 trees is anticipated. This would be confirmed through detailed design. • Tree pruning for clearance along the trail would be required. • Environmental impacts would be minimized. • All applicable environmental and wildlife protection requirements as well as permitting would be adhered to. • Vegetation management along the trail, to accommodate trail widening and allow for implementation of slope stabilization.
Drainage Impacts	<ul style="list-style-type: none"> • Slope stabilization would be required along the existing major drainage ditch adjacent to the trail. • Modifications could be required to minor drainage swales.
Design Requirements	<ul style="list-style-type: none"> • Qualified Environmental Professional, Civil and Structural Engineering consulting services would be required.
Time Frame	<ul style="list-style-type: none"> • Should Council support the proposed trail enhancements, staff will immediately proceed to the next steps, as outlined in this report. • The next steps include procuring consultants, detailed design and application for all required permits and approvals. • Implementation will proceed immediately after receipt of all required permits and approvals.
Agricultural Land Commission (ALC) Considerations	<ul style="list-style-type: none"> • Since the trail is located within the ALR, an ALC application and approval for works associated with the proposed trail enhancements is required. The ALC has been contacted and informed of the intent to improve the trail. The application would be made in the next steps of the project.
Financial Impact	<ul style="list-style-type: none"> • The estimated cost for the outlined proposed trail enhancements is \$400,000. Implementation will be funded from the previously allocated South Dyke Trail Enhancements (around Crown Packaging) capital project.

Next Steps

Should Council support the proposed trail enhancements, as described in this report, the next steps would include procurement of consultant services, detailed design, further analysis of environmental and permitting requirements along with an ALC application and approval.

Construction will start immediately following receipt of all required approvals.

Trail users will be notified about the planned trail enhancement and disruptions to access during construction. Information would be communicated through site signage, social media posts and emails to key stakeholder groups such as the Bark Park Richmond Facebook group, Richmond Active Transportation Committee, Walk Richmond, and HUB Cycling – Richmond/YVR Local Committee. In addition to the trail users, the adjacent property owners would be notified and will be kept up to date about the planned work.

Financial Impact

The total estimated capital cost for implementation of the outlined trail improvements is approximately \$400,000. Funding is available in the approved 2025 budget.

Conclusion

The multi-use trail located within the SRW over 13800 No. 3 Road, around Crown Packaging, is part of the wider South Dyke Trail network. It is used by a broad range of cyclists, pedestrians and rollers of all ages and abilities for recreation, sport, and transportation purposes. The existing trail currently varies from approximately 1.8 to three metres wide and is finished in gravel. It is located along environmentally sensitive areas, farm operations and an industrial site located at 13911 Garden City Road (Crown Packaging).

The proposed trail enhancements will address safety concerns along the trail's pinch point through ditch bank stabilization, trail widening and safety fencing. General trail improvements will include surfacing enhancements and signage throughout. The trail will continue to be a gravel, multi-use path.

Should Council approve the proposed trail enhancements, staff would immediately proceed to next steps and implementation would be funded from the approved 2025 budget.



Miriam Plishka, BCSLA, CSLA
Park Planner
(604-204-8917)

- Att. 1: South Dyke Trail
- 2: South Dyke Trail around Crown Packaging – Existing Conditions
- 3: South Dyke Trail around Crown Packaging – Proposed Trail Enhancements

South Dyke Trail

South Dyke Trail around Crown Packaging within the Statutory Right of Way (SRW)



Legend

<p>OFF-STREET RECREATIONAL BICYCLE AND PEDESTRIAN ROUTE</p> <ul style="list-style-type: none"> Off-Street Paved shared with Pedestrians Off-Street Unpaved shared with Pedestrians <p>ON-STREET BICYCLE ROUTE (with signs and/or pavement marking)</p> <ul style="list-style-type: none"> Neighbourhood Street Bikeway Major Street Bicycle Lane <p>INFORMAL BICYCLE ROUTE (with no special treatment)</p> <ul style="list-style-type: none"> Shared Roadway (sometimes with shoulder) <p><small>These routes are recommended by cyclists but do not have special treatments for cyclists. These routes are not endorsed by municipalities and are provided for your information only.</small></p>	<p>Points of Interest (west – east):</p> <ul style="list-style-type: none"> No. 2 Road Pier / London's Landing London Farm Gilbert Beach No. 3 Road Fishing Pier No. 3 Road Bark Park Finn Slough Woodward's Landing Model Airplane Park
--	---

Map Source: 2021 Trails Map South Dyke Trail

(www.richmond.ca/parks-recreation/parks-trails-cycling/trails-map.htm)

South Dyke Trail Around Crown Packaging – Existing Conditions



Legend

-  South Dyke Trail around Crown Packaging
-  Continuation of the South Dyke Trail
-  Major Drainage Ditch
-  Localized Swale

-  Statutory Right of Way over 13800 No. 3 Road (SRW)
-  Environmentally Sensitive Area (ESA)
-  Site photo location and number – See Attachment 2, page 2

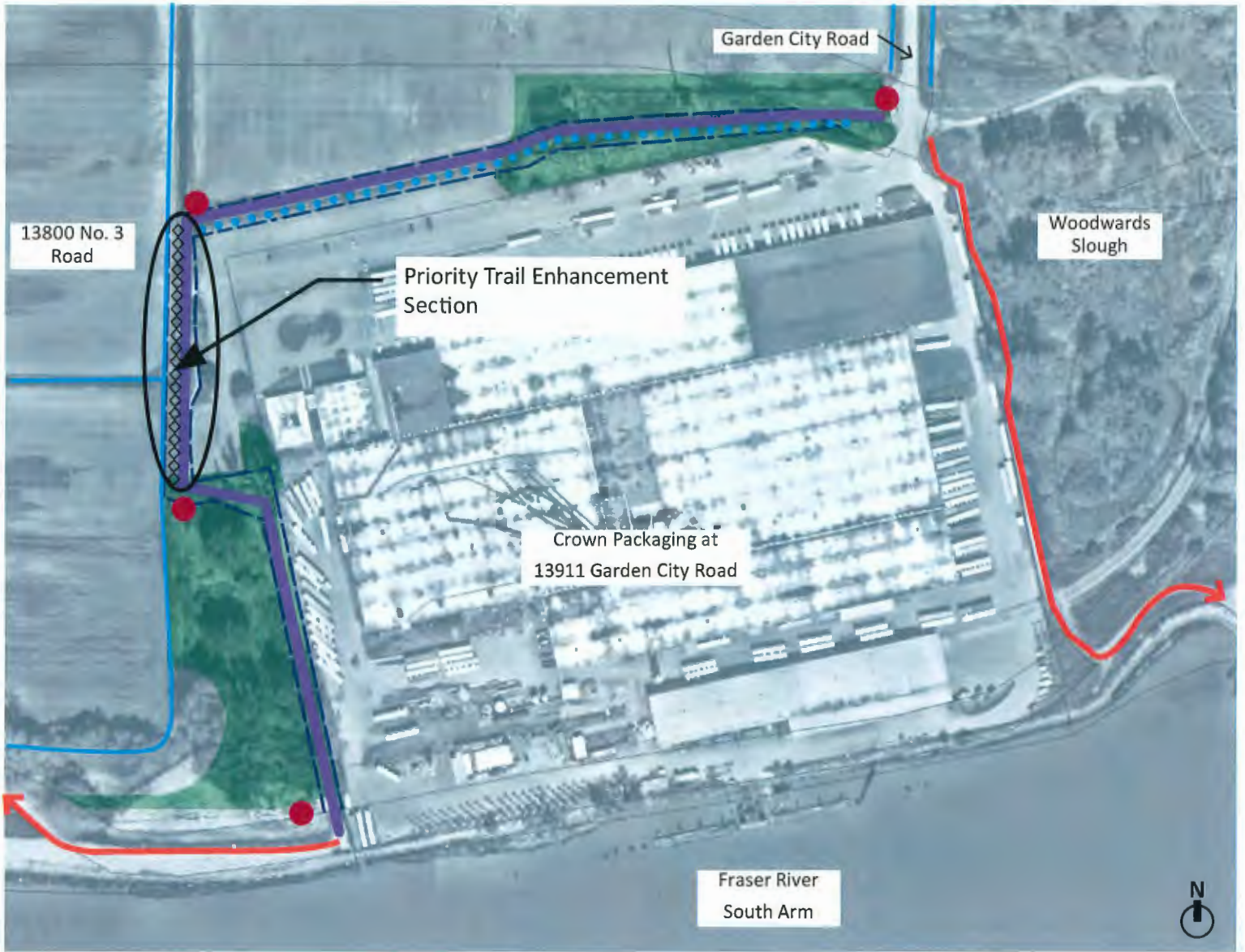
PRCS - 24

South Dyke Trail Around Crown Packaging – Existing Conditions



1. View looking north along the trail on the west side of Crown Packaging.
2. View looking north along the trail on the west side of Crown Packaging with trees to the west.
3. View looking west towards a bend in the trail on the west side of Crown Packaging.
4. View looking north along the trail between Crown Packaging and a major drainage ditch along the farm.
5. View looking east along the trail on the north side of Crown Packaging.
6. View of the crossing at Garden City Road.

South Dyke Trail around Crown Packaging – Proposed Trail Enhancements



Legend

-  Improved Trail
-  Continuation of the South Dyke Trail
-  Major Drainage Ditch
-  Localized Swale
-  Statutory Right of Way over 13800 No. 3 Road (SRW)
-  Environmentally Sensitive Area (ESA)
-  Stabilized bank with Safety Fencing
-  Proposed New Signage



City of Richmond

Report to Committee

To: Parks, Recreation and Cultural Services Committee **Date:** February 12, 2025

From: Todd Gross, Director, Parks Services **File:** 06-2345-20-BURK1/Vol 01

Re: **Burkeville Neighbourhood Park Renewal – Engagement Results and Next Steps**

Staff Recommendations

1. That the concept for the playground and sport courts renewal as outlined in the staff report titled “Burkeville Neighbourhood Park Renewal – Engagement Results and Next Steps”, dated February 12, 2025, from the Director, Park Services, be approved; and
2. That staff proceed with next steps as outlined in the staff report titled “Burkeville Neighbourhood Park Renewal – Engagement Results and Next Steps”, dated February 12, 2025, from the Director, Park Services.

Todd Gross
Director, Parks Services
(604-247-4942)

Att. 5

REPORT CONCURRENCE		
ROUTED TO:	CONCURRENCE	CONCURRENCE OF GENERAL MANAGER
Finance Department	<input checked="" type="checkbox"/>	
Arts, Culture and Heritage	<input checked="" type="checkbox"/>	
Recreation and Sport Services	<input checked="" type="checkbox"/>	
SENIOR STAFF REPORT REVIEW	INITIALS: 	APPROVED BY CAO

Staff Report

Origin

Burkeville Neighbourhood Park, originally built in the 1970s, has undergone several upgrades and renovations over the years. The current sport courts and playground area are now reaching the end of their life cycle and require a refresh.

The purpose of this report is to provide Council with an overview of the public engagement results regarding the park refresh, present recommended improvements and outline the next steps towards renewal of Burkeville Neighbourhood Park.

This report supports Council's Strategic Plan 2022–2026 Focus Area #1 Proactive in Stakeholder and Civic Engagement:

Proactive stakeholder and civic engagement to foster understanding and involvement and advance Richmond's interests.

1.3 Increase the reach of communication and engagement efforts to connect with Richmond's diverse community.

1.4 Leverage a variety of approaches to make civic engagement and participation easy and accessible.

This report supports Council's Strategic Plan 2022–2026 Focus Area #2 Strategic and Sustainable Community Growth:

Strategic and sustainable growth that supports long-term community needs and a well-planned and prosperous city.

2.3 Ensure that both built and natural infrastructure supports sustainable development throughout the city.

This report supports Council's Strategic Plan 2022–2026 Focus Area #3 A Safe and Prepared Community:

Community safety and preparedness through effective planning, strategic partnerships and proactive programs.

3.4 Ensure civic infrastructure, assets and resources are effectively maintained and continue to meet the needs of the community as it grows.

This report supports Council's Strategic Plan 2022–2026 Focus Area #6 A Vibrant, Resilient and Active Community:

Vibrant, resilient and active communities supported by a wide variety of opportunities to get involved, build relationships and access resources.

6.1 Advance a variety of program, services, and community amenities to support diverse needs and interests and activate the community.

6.2 Enhance the City's network of parks, trails and open spaces.

6.3 Foster intercultural harmony, community belonging, and social connections.

6.5 Enhance and preserve arts and heritage assets in the community.

Analysis

Background

Burkeville Neighbourhood Park was originally constructed in the 1970s and serves as the primary social, recreational, and gathering hub for the tight-knit Burkeville neighborhood area. The park's primary recreational facilities, which include the sport courts and older portion of the playground, are rapidly approaching the end of their life cycles and need renewal to ensure that the park continues to meet safety standards, community needs and park service levels into the future. The overall accessibility of the park pathways and older playground is limited and does not meet contemporary standards for universal accessibility or inclusive play, further highlighting the need for renovation.

Community Engagement Process

Before the public engagement period, staff met with the Sea Island Community Association to gather their support, initial input, and suggestions for the Burkeville Neighbourhood Park Renewal project.

Staff hosted a targeted public engagement process which included:

- An online survey available through LetsTalkRichmond (open from Monday, November 4, 2024, to Sunday, December 8, 2024); and
- Two in-person open houses held at Sea Island Community Centre (7140 Miller Road) on Wednesday, November 13, 2024, from 5:00 to 7:00 p.m. and Saturday, November 16, 2024, from 9:00 to 11:00 a.m.

The open houses and online engagement included information boards containing project background information and reference images to guide park design, refer to Attachment 1. Participants were invited to provide input in several different ways, including voting on their favourite sport activities, playground elements and completing a survey (Attachment 2). The open houses were an opportunity for staff to answer questions, engage in discussion and gather feedback.

Community Engagement Results

The responses to the surveys and the feedback received during the public engagement are documented and summarized (refer to Attachment 3 – Survey Responses Report and Attachment 4 – Summary of Engagement Results).

Park Renewal

Based on the engagement results, the following priorities were identified and are recommended for the playground and sport courts.

For the existing playground area, the following improvements are proposed:

- Replace old playground equipment with a climber, monkey bars, slide, and other play equipment to improve play opportunities and experiences for a broader range of ages and abilities.
- Retain the portion of the playground with swings and zipline.
- Upgrade playground surface to improve accessibility and safety.

Given the high frequency of play for both tennis and pickleball sport amenities, the following improvements are proposed:

- Replace sport courts surfaces and equipment to address safety hazards caused by upheaved asphalt, while also enhancing accessibility and playability.
- Integrate ball hockey into the existing basketball court for shared play.
- Introduce pickleball to the existing ball hockey court, and consider adding pickleball lines to the existing tennis court to allow for shared play.
- Review/repair conditions of existing sport courts fencing and replace those that are beyond the point of repair.

The renewal will follow current best practices and consider circular economy principles. Redevelopment of these focal areas will ensure continued service delivery and provide opportunities to refresh and enhance their character and aesthetic in alignment with the local community. Additionally, maintenance and safety concerns will be addressed at the water play area and all existing healthy trees will be retained.

The schematic project scope is depicted in Attachment 5 – Conceptual Design Diagram. The Conceptual Design Diagram is supported by Sea Island Community Association (SICA) and Sea Island Heritage Society (SIHS).

Burkeville Neighbourhood Park Collaboration Initiatives: Public Art Relocation and Heritage Interpretive Signs

Additional opportunities to enhance Burkeville Neighbourhood Park as part of the current park renewal project have been identified in collaboration with the community and SIHS. These initiatives include the potential relocation of the public art sculpture, *Shaping Hands*, from Richmond Firehall #4 Sea Island (the Firehall) to a more prominent and accessible location in Burkeville Neighbourhood Park, as well as integration of interpretive signs that highlight the rich heritage of the Burkeville community. Staff have been working alongside the SIHS and SICA to incorporate these initiatives into the current renewal project and identify potential locations for them.

Public Art Relocation Initiative – Shaping Hands

Staff have received input from the community regarding the location of the artwork *Shaping Hands*. The artwork consists of a large bronze globe that is made of approximately 90 individual hand impressions from local community members and was installed in 2008 as part of the Sea Island Community Building construction project. Located in a landscaped area at the northeast side of the Firehall, the current location has limited visual and physical accessibility.

The Burkeville Neighbourhood Park Renewal project presents an opportunity to co-ordinate the relocation of this community-oriented public art piece to a more prominent and accessible location in Burkeville Neighbourhood Park. The new proposed location within the park would allow the public to get up close to the sculpture, reinforcing its message of community unity (Attachment 5).

The Richmond Public Art Advisory Committee, SICA, SIHS and Richmond Fire Rescue are supportive of the proposed relocation.

Heritage Interpretive Sign Initiative

SIHS brought forward the potential to integrate heritage interpretive signs as part of the current park renewal project. Incorporation of heritage interpretive signs at Burkeville Neighbourhood Park near the playground, would support the Council's Strategic Plan's priority to enhance and preserve arts and heritage assets in the community, while also supporting the Sea Island Heritage Pathways Initiative (the Pathway Initiative), which is in the early stages of planning.

One of the signs would highlight the history of Burkeville, while the other would provide background on the World War II military presence near Burkeville. The signs would be 0.3 metres high by 1.2 metres wide and would be mounted on posts at an angle, approximately 1.0 metre above the ground. Refer to the last page of Attachment 1 for the draft content of the two signs and Attachment 5 for the proposed location of the two signs.

Both the public art relocation and heritage interpretive sign initiatives can be co-ordinated with and incorporated into the current park renewal within existing approved budgets.

Next Steps

The next step in advancing the Burkeville Neighborhood Park Renewal is to develop detailed design for the project, followed by the standard procedure for construction services procurement.

The construction of Burkeville Neighbourhood Park Renewal is anticipated to start in fall 2025. Notification of construction will be communicated through signs on site and letters to local residents. Council will be informed by a memo with a project update closer to the start of construction.

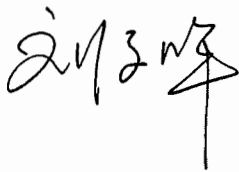
Staff will continue to collaborate with the SICA and SIHS throughout the process.

Financial Impact

A total funding of \$600,000 for the Burkeville Neighbourhood Park Renewal project was previously approved by Council as part of the Consolidated 5 Year Financial Plan (2024–2028). Relocation of *Shaping Hands* and the heritage interpretive signs will be funded from existing budgets.

Conclusion

It is recommended that Council approve the outlined playground and sport courts renewal, and staff proceed with next steps. Burkeville Neighbourhood Park serves as the heart of the Burkeville community, valued by both residents and visitors. The playground and sport courts have experienced noticeable decline, highlighting the need for renewal to better align with the community's evolving needs. Revitalizing these areas based on public engagement feedback is key to the success of the project, ensuring the park continues to meet the needs of the community for years to come.



Molly Liu
Park Planner
(604-233-3310)

- Att. 1: 2024 Burkeville Open House Boards
- 2: Burkeville Park Renewal Survey
- 3: Survey Responses Report
- 4: Summary of Engagement Results
- 5: Conceptual Design Diagram

Welcome!

Burkeville Neighbourhood Park, originally built in the 1970s, has undergone several upgrades and renovations over the years. However, the current sport courts and older playground area are now reaching the end of their life cycle and require a refresh.

We are here today to learn about your vision for these park areas. Your feedback through this public engagement process will guide the design of the upgraded sport courts and playground.

Thank you for your valuable input!



PRCS - 33

Playground Renewal Process

WE ARE
HERE

Summer - Fall 2024: Community Engagement

Winter 2024 - Spring 2025: Design Development

Spring/Summer 2025: Construction

Please note: this schedule may shift due to unknown factors such as weather and available resources.



For more information, contact project manager Molly Liu at mliu2@richmond.ca, scan the adjacent QR code or visit the project page at richmond.ca/parksprojects

Share your thoughts about the existing playground and sport courts

Below is a map of the existing park.



Key Issues and Opportunities

The park is the key amenity at **Burkeville Neighbourhood Park** and provides a place where people of all ages can gather and play. This renewal process provides an opportunity to identify and address existing challenges and issues. Feel free to add a sticky note to the board with your comments to express your thoughts.



Fig. 1 - Accessibility



Fig. 2 - Existing Trees

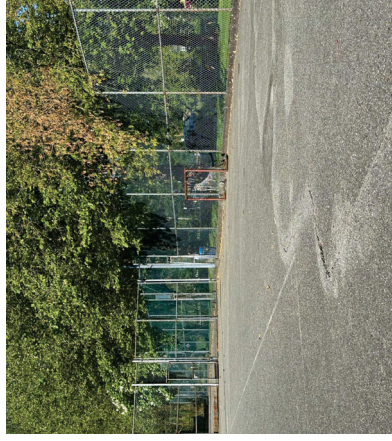


Fig. 3 - Uneven Surfaces at Sport Courts

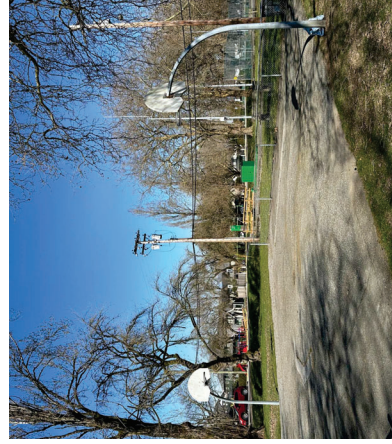


Fig. 4 - Basketball Court

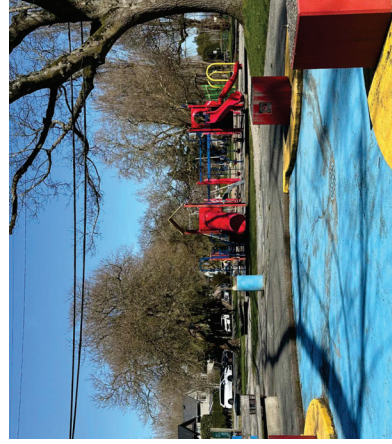


Fig. 5 - Water Play Area



Fig. 6 - Existing Play Equipment

KEY ISSUES

- Pathways and sport court surfaces are uneven, hindering accessibility of all users
- Sport equipment is old with limited usability
- Some play equipment is reaching the end of their life cycles
- Water play surface area is slippery

OPPORTUNITIES

General

- Retain, protect and enhance existing site features, such as existing mature trees and open lawn areas
- Replace uneven pathways to improve accessibility

Sport Courts

- Replace paving surfaces and sport equipment to improve safety and play conditions
- Preserve existing popular sport activities and integrate new sport activities to the park

Play Areas

- Keep play equipment that is still in good condition (e.g. zipline, swings)
- Replace outdated play equipment to align with current best practices
- Improve the water play surface area to increase safety

Share your thoughts about the future sport courts

Put a sticker beside the top three sports you would like to play in the sport courts



Basketball

PRCS - 36



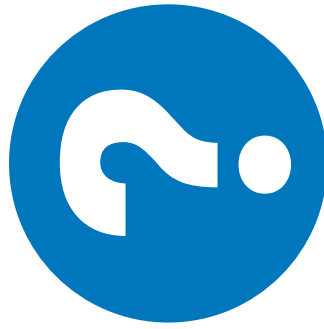
Tennis



Ball Hockey



Pickleball



Other (Please Specify)

More thoughts? Contact mliu2@richmond.ca

Share your thoughts about the future playground

Below are a range of play elements and features that could be included in the renewed playground. Put a sticker beside your top three favourite elements.



climbers



boulders + logs



imaginative play



sand



more swings

PROCS 37



spring toy



spinner



slide



monkey bars



playhouse



outdoor musical instruments



interactive play panels



seesaw



slide pole

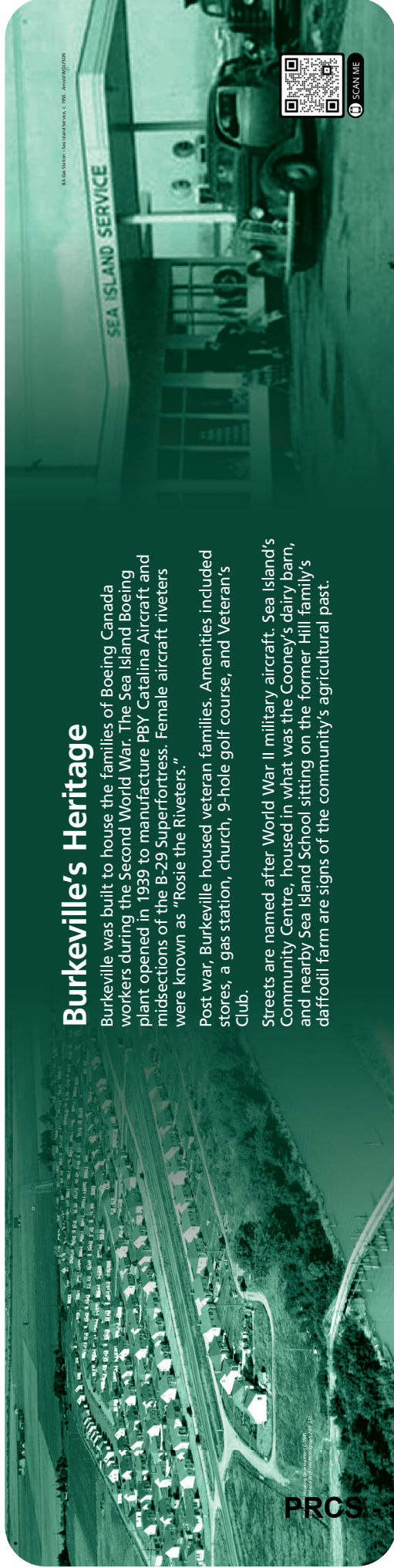


other
(please specify)

More thoughts? Contact mliu2@richmond.ca

Discover Burkeville's rich heritage!

Sea Island and the Burkeville community hold a unique history, closely connected to aviation and the Second World War. The Burkeville Neighbourhood Park Renewal project will celebrate these stories by introducing interpretive signs around the playground, highlighting the area's heritage. This board showcases some early examples of how these signs might look, offering a glimpse into the stories and history of this remarkable community.



Burkeville's Heritage

Burkeville was built to house the families of Boeing Canada workers during the Second World War. The Sea Island Boeing plant opened in 1939 to manufacture PB4Y Catalina Aircraft and midsections of the B-29 Superfortress. Female aircraft riveters were known as "Rosie the Riveters."

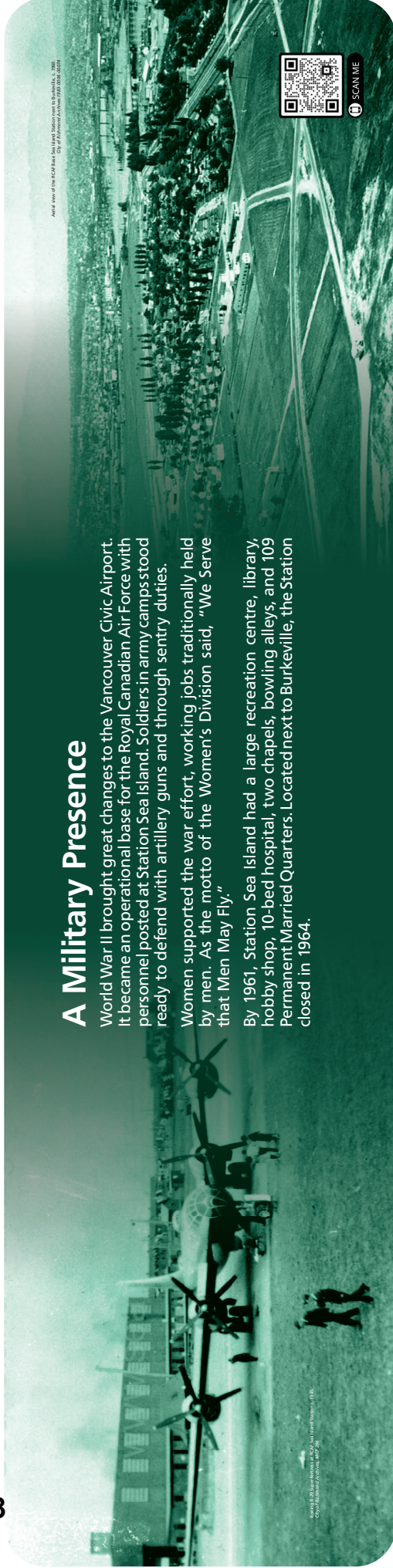
Post war, Burkeville housed veteran families. Amenities included stores, a gas station, church, 9-hole golf course, and Veteran's Club.

Streets are named after World War II military aircraft. Sea Island's Community Centre, housed in what was the Cooney's dairy barn, and nearby Sea Island School sitting on the former Hill family's daffodil farm are signs of the community's agricultural past.

PRCS 38



SCAN ME



A Military Presence

World War II brought great changes to the Vancouver Civic Airport. It became an operational base for the Royal Canadian Air Force with personnel posted at Station Sea Island. Soldiers in army camps stood ready to defend with artillery guns and through sentry duties.

Women supported the war effort, working jobs traditionally held by men. As the motto of the Women's Division said, "We Serve that Men May Fly."

By 1961, Station Sea Island had a large recreation centre, library, hobby shop, 10-bed hospital, two chapels, bowling alleys, and 109 Permanent Married Quarters. Located next to Burkeville, the Station closed in 1964.



SCAN ME

More thoughts? Contact mliu2@richmond.ca



The City of Richmond invites the public to provide input on the renewal of the Burkeville Neighbourhood Park.

Please review the display boards, and then take a few minutes to complete this survey. You can either complete the survey online at LetsTalkRichmond.ca/burkevillepark or drop off a copy of the completed survey to Sea Island Community Centre (7140 Miller Road). All surveys are to be received by **Sunday, December 8, 2024**.

Feedback received will play a key role in shaping design and construction of the Burkeville Neighbourhood Park renewal.

1. Sport Courts

I would like to play the following sport activities in the renewed sport courts (choose the top 3):

- | | |
|---|-------------------------------------|
| <input type="checkbox"/> Basketball | <input type="checkbox"/> Tennis |
| <input type="checkbox"/> Ball Hockey | <input type="checkbox"/> Pickleball |
| <input type="checkbox"/> Other (please specify) | |

2. Playground

I would like to see the following options included in the future playground (choose top 3):

- | | |
|---|---|
| <input type="checkbox"/> Climber | <input type="checkbox"/> Boulders + logs |
| <input type="checkbox"/> Imaginative play (e.g. boat or plane inspired equipment) | <input type="checkbox"/> Sand |
| <input type="checkbox"/> More Swings | <input type="checkbox"/> Spring toy |
| <input type="checkbox"/> Spinner | <input type="checkbox"/> Slide |
| <input type="checkbox"/> Monkey bars | <input type="checkbox"/> Playhouse |
| <input type="checkbox"/> Interactive play panel | <input type="checkbox"/> Outdoor musical instrument |
| <input type="checkbox"/> Seesaw | <input type="checkbox"/> Slide pole |
| | <input type="checkbox"/> Other (please specify) |

General Comments and Questions

I would like to share the following thoughts about the existing condition of Burkeville Neighbourhood Park:

I would like to share the following thoughts or ideas about the future of Burkeville Neighbourhood Park:

Please tell us about yourself

Children under my care are (check all that apply):

- | | |
|--|---|
| <input type="checkbox"/> 0-2 years old | <input type="checkbox"/> 8-12 years old |
| <input type="checkbox"/> 2-5 years old | <input type="checkbox"/> 12+ years old |
| <input type="checkbox"/> 5-8 years old | <input type="checkbox"/> Not applicable |

My postal code is (optional): _____

I heard about this public consultation process via (check all that apply):

- | | |
|---|--|
| <input type="checkbox"/> Postcard mailed to me | <input type="checkbox"/> Signage posted in the area |
| <input type="checkbox"/> Social media ad | <input type="checkbox"/> Posters at community centre |
| <input type="checkbox"/> On-site open house | <input type="checkbox"/> Word of mouth |
| <input type="checkbox"/> Other (please specify) _____ | |

Thank you for your time and feedback.

Burkeville Neighbourhood Park renewal survey

SURVEY RESPONSE REPORT

04 November 2024 - 11 December 2024

PROJECT NAME:

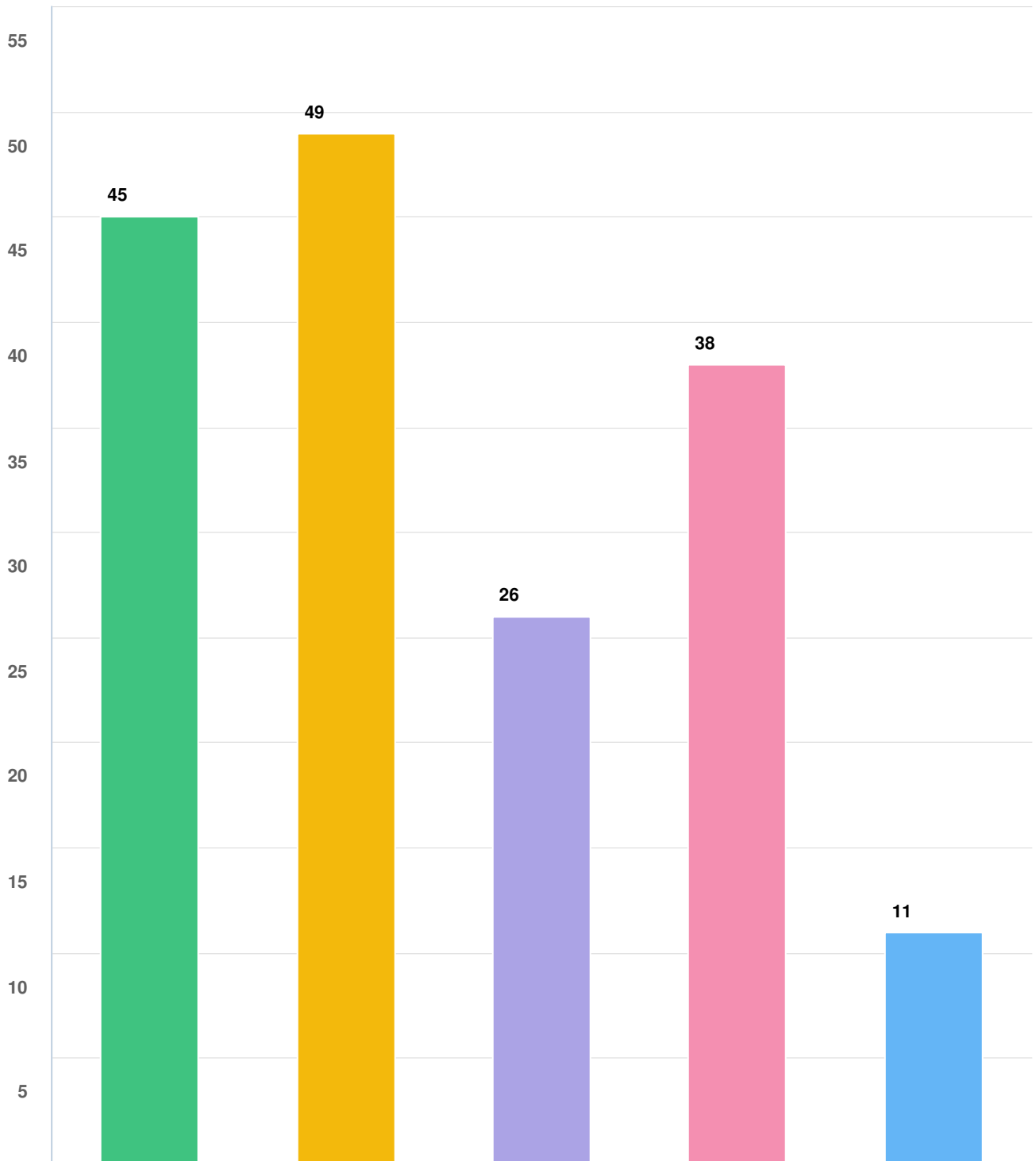
Burkeville Park Renewal 2024





SURVEY QUESTIONS

Q1 I would like to play the following sport or activities in the renewed sport courts (choose the top 3):



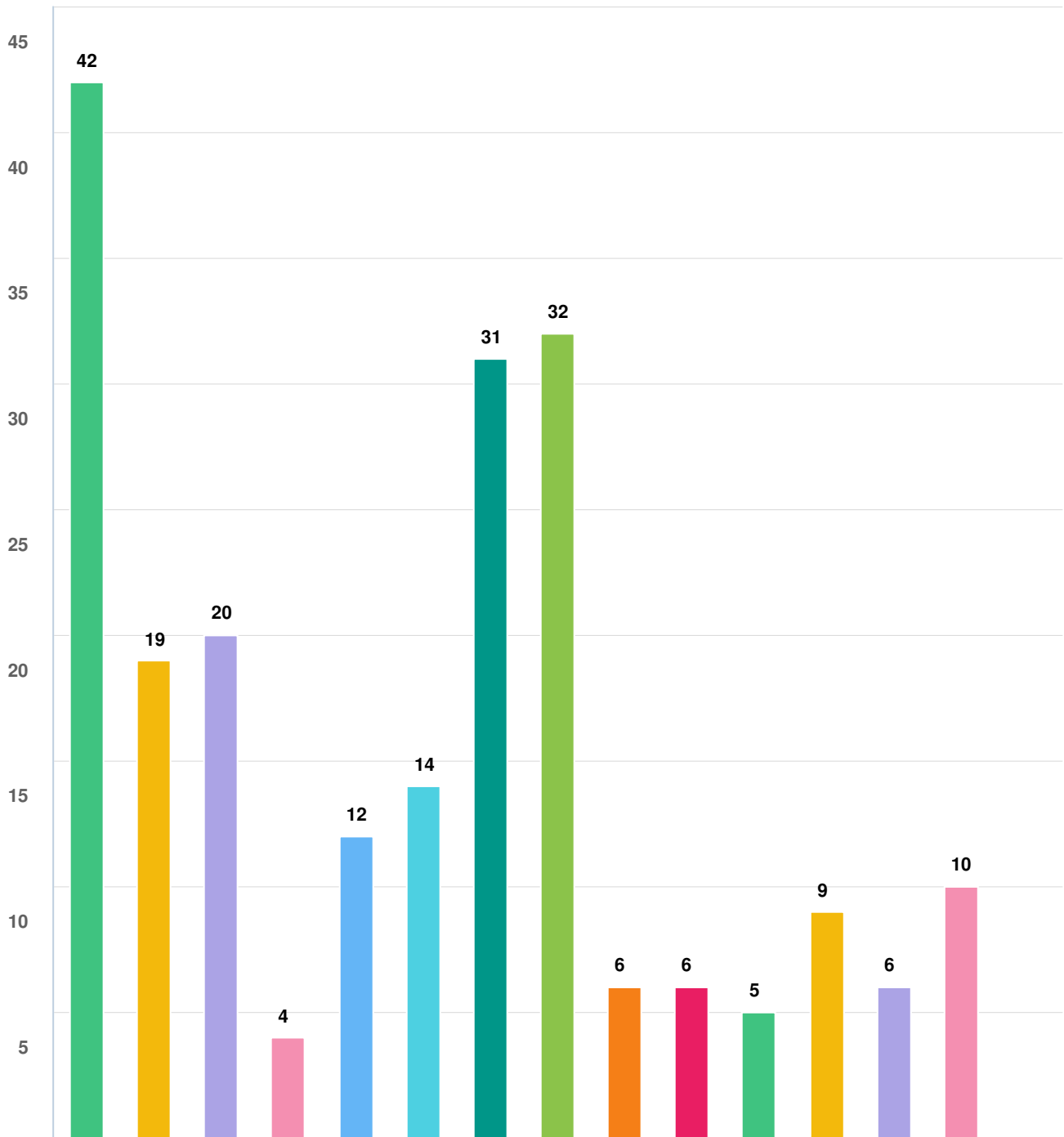
Question options

- Basketball
- Tennis
- Ball hockey
- Pickleball
- Other (please specify)

Optional question (79 response(s), 1 skipped)

Question type: Checkbox Question

Q2 I would like to see the following options included in the future playground (choose the top 3):



Question options

- Climber
 ● Boulders and logs
● Imaginative play (e.g. boat or plane-inspired equipment)
● Sand
● More swings
- Spinner
 ● Slide
● Monkey bars
● Playhouse
● Interactive play panel
● Outdoor musical instruments
- Seesaw
 ● Slide pole
● Other (please specify)
● Spring toys

Optional question (75 response(s), 5 skipped)
 Question type: Checkbox Question

Q3 | I would like to share the following thoughts about the existing condition of Burkeville Neighbourhood Park:

Screen Name Redacted

11/04/2024 02:33 PM

I don't have children, but I do take my dogs to the park.

Screen Name Redacted

11/04/2024 08:56 PM

The lighting for the ball hockey area is not adequate. The Volleyball court and swings are missing from your boards. the play structure that preceded the existing one was far superior. Usage declined when it was replaced with the current structure as the children found it boring.

Screen Name Redacted

11/05/2024 06:51 AM

Playground play structures are getting old with numerous elements broken or not working as originally intended. Playing surface of basketball court is too damaged to dribble ball properly.

Screen Name Redacted

11/05/2024 07:18 AM

Please keep the open green space and continue to maintain and plant trees.

Screen Name Redacted

11/05/2024 09:45 PM

It's fine for younger kids, not very interesting for older school aged kids. The more recent zip line is great as well as the new logs and border. The older area of the park's perimeter definitely needs an update! Perhaps more logs and boulders? Something for older kids would be great like the Eiffel Tower type structure.

Screen Name Redacted

11/05/2024 11:10 PM

We have been taking our children to this park since 2011 and have seen it deteriorate over time.

Screen Name Redacted

11/05/2024 11:35 PM

The treed space makes the park more accessible for users - it moderates the temperature significantly and provides much needed shade for all park users and community events. In recent years, the park has lost several of its large, established trees due to wind events. I strongly feel that, in order to maintain the park as an inclusive, sustainable and useable space well into the future, a program of tree replacement should be put into effect immediately.

Screen Name Redacted

11/06/2024 09:21 AM

We live in the neighbourhood. My children love to play basketball. The basketball courts need a refresh.

Screen Name Redacted

11/06/2024 11:15 AM

It is good. The waterpark needs work (better control over the water features)

Screen Name Redacted

11/06/2024 01:10 PM

Now, at 19, almost 20, I've always wanted to play basketball with friends here in Burkeville, where I live. The court, though, has always been in poor shape and still looks as rundown as ever. It's missing nets, the backboard is in terrible condition, the hoops aren't much better, and the ground has never had the proper markings of a real basketball court.

Screen Name Redacted

11/06/2024 03:39 PM

I suggest more pickleball courts. It is by far the most in demand racquet sport in richmond. Facilities are lacking in Richmond

Screen Name Redacted

11/06/2024 04:02 PM

It is heavily used. It is showing wear and tear. The structures are dated and old

Screen Name Redacted

11/06/2024 05:40 PM

Waterpark and water supply are critical to the survival of our community.

Screen Name Redacted

11/06/2024 05:41 PM

It's a family space for picnics and community events (Burkeville Days).

Screen Name Redacted

11/06/2024 07:38 PM

Courts are more in need of repairs as the play area was upgraded recently. Parking is an issue because Airport Road is not marked well. Insufficient signs directing people to use Airport Road for parking. Heavy usage of Catalina crescent for parking in summer months.

Screen Name Redacted

11/06/2024 08:35 PM

I would love to see the splash pad torn up and reimagined into something more fun and safer, similar to steveston.

Screen Name Redacted

11/06/2024 10:31 PM

Thank you for mowing the grass. The parks courts are ****NOT maintained. Full of leaves, moss, algae. slippery and broken. Please consider other demographics besides children. Seniors, Parents, young adults, teens -- we do not have a fitness center here. Please add a perimeter in the two parks for us to walk and get steps in. Parents could be walking the "Track" while their kids play. Seniors could be walking safely in the other park without tripping on branches. There could be sit up, pull ups, parallel bars placed so that we could get a circuit of exercise in the Court Park. Please at least add gravel, or raised so that we don't get muddy in the winter. Ideally a rubber

running track like minoru would be best.

Screen Name Redacted

11/06/2024 10:50 PM

The water park portion needs more improvement or maintenance.

Screen Name Redacted

11/07/2024 09:52 AM

1) The water park ground is so slippery when wet it is extremely dangerous. This is my most biggest concern of the park. I cannot let my 4 year old and 2 year old play because I'm afraid they may fall and severly injure their head. 2) tennis court ground is not flat and not tennis compatible material, the ball bounces off to a weird direction, nor does it bounce properly. 3) washroom upgrade - those pit stop washrooms are super hard to use for my 4 years old. I have to put her in her diaper when she is capable of doing her business in the toilet. Also its not friendly for handicaps. We need a proper stall that is to code with proper plumbing equipments. 2 stalls - 1 handicap, 1 typical size

Screen Name Redacted

11/07/2024 11:38 AM

The basketball court would get more use if there were nets and line markings. Water can collect and form puddles. One of the hoops is also crooked.

Screen Name Redacted

11/07/2024 03:54 PM

We have three children aged 3, 6 and 9 and all find the existing playground to be fully satisfactory. They like the variety of all of the monkey bar options, the different slides and various play areas. They deem it the "best playground in the world". They don't think huge changes are necessary.

Screen Name Redacted

11/07/2024 04:08 PM

the splash pad needs to be redone.

Screen Name Redacted

11/07/2024 08:16 PM

The zip line is poorly functioning. It is hard for kids to use and doesn't move from end to end well. It would also be better to have two well functioning zip lines like at Terra nova park. The overall playground is dated and could use upgraded spaces for different age groups from preschool to 18.

Screen Name Redacted

11/07/2024 09:35 PM

The zip line is great and so are the swings.

Screen Name Redacted

11/07/2024 10:26 PM

Definitely needs an upgrade - especially the water park. It is a park that is used very regularly. During summer weekends there are people from other neighbourhoods enjoying the park - which is great.

Screen Name Redacted

11/07/2024 11:05 PM

Construction happened two years ago on drain was a pain. This is the only concerning thing. We hope it could be finished as soon and as less disruptive and quiet as possible.

Screen Name Redacted

11/08/2024 06:11 PM

The tennis courts would benefit from an upgrade

Screen Name Redacted

11/08/2024 09:46 PM

Urgent need to fix the basketball courts and stairs on the kids playground.

Screen Name Redacted

11/09/2024 01:42 PM

The Zipline was a great addition but very poorly executed. Now the platform that was built is subpar as kids fall off it all the time.

Screen Name Redacted

11/10/2024 04:57 PM

The current layout is effective. Lots of room between structures.

Screen Name Redacted

11/10/2024 05:38 PM

I think the park is excellent as it is. It's had a renovation recently with the new zip line and swings, and I don't think it needs a change

Screen Name Redacted

11/10/2024 09:50 PM

The existing water park is very outdated. Will be great if the water park can be refresh and more assessable

Screen Name Redacted

11/10/2024 10:25 PM

The structure is getting old

Screen Name Redacted

11/11/2024 02:48 AM

The water park is also in desperate need of reconditioning or a full replacement. It doesn't have to be anything massive but something that's better then the current 3 sprinklers

Screen Name Redacted

11/11/2024 09:10 AM

The basketball court is very worn down and barely useable. Cement is uneven (can't bounce a ball on it). The tennis courts are used frequently. It's great to have one with a net for tennis/pickleball, and one without a net for ball hockey and dog training. I used the park for MANY years when my sons (now 22 and 16) were growing up. The park is heavily used for community events and is a wonderful place to connect with neighbors.

Screen Name Redacted

Rusting metal / some equipment is very dated.

11/11/2024 10:22 AM

Screen Name Redacted

11/13/2024 08:34 AM

The playgrounds in Canada are very boring. Please, refer to Israel that is the Disneyland of playgrounds in the world.

Screen Name Redacted

11/13/2024 11:57 AM

Time for an upgrade!

Screen Name Redacted

11/13/2024 07:50 PM

No decent washrooms... Can't be portables ☹️

Screen Name Redacted

11/14/2024 07:37 PM

Generally good. I like the 'splash pool' and see it gets use in the hot summer days. Maybe a timer can be added to make sure it doesn't run unattended. The trees could be maintained more. Some are ok na state were the are bi-sected by utilities, others look like they are kinda dying or in need of a hard prune. I do love the big trees as they speak to the age and history of the neighborhood.

Screen Name Redacted

11/14/2024 08:41 PM

•good to see frequent use of water sprayers/sprinklers during summer. • Zipline is popular. Used by both kids and adults. • older trees need to be maintained better.

Screen Name Redacted

11/20/2024 02:51 PM

The waterpark needs to be upgraded with a timer/on-off switch. In this day of water conservation, leaving the water running when no children are around is a waste. I understand a complete upgrade is cost prohibitive, but a simple on-off timer should be easy to install.

Screen Name Redacted

11/21/2024 06:59 PM

The water play area is very old and not utilized unless an extremely hot day and then it can be a waste of water. All the sport courts are in bad shape but you probably know that.

Screen Name Redacted

11/24/2024 12:15 AM

Playground Park is in good condition, both Tennis and Basketball courts need the most attention.

Screen Name Redacted

11/26/2024 06:44 PM

The equipment is functional -- and provides a range of activity types. However, it feels a little dated and some of is definitely in need of repair. Keep the zipline! And if anything make it bigger and better, it is constantly used!

Screen Name Redacted

To have it friendlier for all ages.

12/01/2024 08:44 PM

Screen Name Redacted

12/01/2024 10:50 PM

It has "old school" charm. A couple of years ago the park was updated (zip line) without consultation and it seems very piecemeal together and not thoughtful.

Screen Name Redacted

12/03/2024 03:31 PM

Basket ball court has not been used as surface is uneven. Tennis court gets a lot of use. The playground seems well visited.

Screen Name Redacted

12/05/2024 06:21 PM

Very sad to see the swings gone for older kids. Many young teens would frequent the old, tall swings at the south end of the park. I think it was a good place for them to hang out for free and their certainly isn't enough places like that for young people. I would like to see a wider range of age considered in the renewal of Burkeville Park. For the parents, better seating arrangement to promote a sense of community. The current seating is poor and arranged poorly. I think we as a community should have a discussion about the coyotes which frequent the park on an almost daily basis. Many trees have fallen and not replaced by city.

Screen Name Redacted

12/08/2024 08:39 PM

It has been fairly well taken care of over the 7+ years that my children have grown up using the park. We look forward to enhancements going forward.

Screen Name Redacted

12/11/2024 03:32 PM

its holding up well. spring toys and some of the wood borders are rotting and need replacement. general layout and variety of equipment is good overall.

Screen Name Redacted

12/11/2024 03:39 PM

water area needs a timer that the kids can use, right now they leave it running because they can't physically turn it off

Screen Name Redacted

12/11/2024 03:43 PM

- we would love a timer for the water play area as there is too much wasted water - mindful of the older 8-12yr olds who still want to play - net between pickle ball courts for decreased interruptions

Screen Name Redacted

12/11/2024 03:47 PM

uneven court surfaces for court play

Screen Name Redacted

12/11/2024 03:49 PM

people need to be directed to the park on Airport Road as opposed to Lancaster Crescent

Screen Name Redacted

12/11/2024 03:52 PM

add stem water feature to the current water play still have some sort of structure for grounders style games wheelchair accessible

Screen Name Redacted

12/11/2024 03:57 PM

the trees are in need of care and maintenance basketball court is a slipping tripping hazard

Screen Name Redacted

12/11/2024 03:59 PM

monkey bars are in good condition spring sit on toddler items need replacing

Screen Name Redacted

12/11/2024 04:00 PM

pickle ball courts in the existing ball court

Screen Name Redacted

12/11/2024 04:02 PM

exist water park is popular and well used - would like to see this updated and stay in the park

Screen Name Redacted

12/11/2024 04:02 PM

basketball court is bumpy

Screen Name Redacted

12/11/2024 04:07 PM

the current "permanent" port potty situation is substandard a wash / change room as originally planned /designed is still needed (from plans/drawings circa 1975)

Optional question (62 response(s), 18 skipped)

Question type: Essay Question

Q4 | I would like to share the following thoughts or ideas about the future of Burkeville Neighbourhood Park:

Screen Name Redacted

11/04/2024 08:56 PM

The trees need attention, many are not healthy and with the size of the branches they are a concern for park users as you never know when the next one will come crashing down.

Screen Name Redacted

11/05/2024 06:51 AM

Maintain through access on Airport Road to keep traffic off of Catalina and Douglas.

Screen Name Redacted

11/05/2024 07:18 AM

Please consider that this is very proximal to residences and not all usage cases (particularly pickleball or outdoor musical instruments)

may be practical.

Screen Name Redacted

11/05/2024 09:45 PM

I'd like to see more natural elements like the metal, wood and ropes at Terranova and Garden City.

Screen Name Redacted

11/05/2024 11:10 PM

We would love to see a park that is inclusive of users of all ages and abilities. This park is the heart of our community where people of all ages come together for many occasions. It is a vital part in helping our children develop, enabling our beloved pets to join gatherings, and encouraging residents and visitors to spend time outdoors and stay active.

Screen Name Redacted

11/05/2024 11:35 PM

The parks is a welcoming space for families and community throughout the year. It provides gathering space for all. I would like to see that protected and sustained by ensuring that the current amounts of grass and tree cover are retained and/or increased.

Screen Name Redacted

11/06/2024 09:21 AM

I would love to see PIP rubber flooring in the playground instead of wood chips as I've seen many kids get injured with wood chips.

Screen Name Redacted

11/06/2024 01:10 PM

Looking ahead, it would be fantastic to have a proper half-court basketball setup, like the one at the Olympic Oval, with a fence around it and a large net behind the hoop to catch missed shots so you don't have to chase the ball into the ditch. A clearly painted three-point line and out-of-bounds markers would make a huge difference. This has been my biggest wish growing up for nearly 20 years here in Burkeville.

Screen Name Redacted

11/06/2024 03:39 PM

Please make more pickleball courts

Screen Name Redacted

11/06/2024 04:02 PM

This park needs to be created larger and have more accessibility. It is always full of kids. More variety of structures.

Screen Name Redacted

11/06/2024 05:40 PM

Critical neighbourhood space for events.

Screen Name Redacted

11/06/2024 05:41 PM

Please replace and add new generations of trees.

Screen Name Redacted

11/06/2024 07:38 PM

Clear marking (and signage) for parking on Airport rd. Signage showing there is a bridge that provides access to park. Upgrade to washroom facility.

Screen Name Redacted

11/06/2024 08:20 PM

It would be great to convert basket ball court to a full court. There is definitely room. Also an artificial ice surface would be amazing (not sure if it would stand up to use and weather).

Screen Name Redacted

11/06/2024 08:35 PM

I welcome the idea of an upgrade park but hope it keeps its colourful charm and doesn't take on to natural or an organic look. We have lots of those already in Richmond and my kids often lose interest.

Screen Name Redacted

11/06/2024 10:31 PM

Please give us more fitness areas, more places to walk. Please do not add trees that the entire park is in shade. Especially near the water park area where kids would like to be in sun. Add trees to the corner /triangle empty space near Lancaster and Russ Baker. Don't add more trees that can't get a deep root system and fall. Keep open spaces for badminton/volleyball nets as the corner of Catalina. Open level spaces that can be filled with layered for good running, soccer, baseball type sports. Install poles for easy installation of nets. Please don't give us more weeds. The grass is much appreciated, vs the weeds on Catalina.

Screen Name Redacted

11/07/2024 09:52 AM

A properly resurfaced, properly built to code park is what we need. 1) resurface the water park ground with proper materials. This must be done. 2) Tennis court - resurface the ground for proper tennis ground 3) Leveled grass field for soccer, existing volleyball "court" 4) proper washroom stalls

Screen Name Redacted

11/07/2024 11:38 AM

Everything needs to be designed to be resilient against rain, water and leaves. Also many trees have fallen and more should be planted.

Screen Name Redacted

11/07/2024 03:54 PM

Preference for keeping the pebble surface in place. Dislike for woodchips.

Screen Name Redacted

11/07/2024 04:08 PM

The playground should be similar to the one at Terra Nova adventure park

Screen Name Redacted

11/07/2024 08:16 PM

I would like to see a new better water park that would be fun for all age groups in place of the old run down one that exists. Also the zip

line needs to be redone and a second one added to be like Terra nova park. More trees to be added to replace the trees that are being cut down and to Tera form the land with hills and slopes for kids to have varying terrains to play.

Screen Name Redacted

11/07/2024 09:35 PM

The spray park needs updating. The basic park structures need to be added to, there needs to be more things to play on.

Screen Name Redacted

11/07/2024 10:26 PM

A nice picnic area would be nice. A running track/path around the perimeter of the park would be a cool idea. Let's be innovative. There is a lot of real estate there to really enhance it.

Screen Name Redacted

11/08/2024 06:11 PM

It's a much used and valuable community asset.

Screen Name Redacted

11/08/2024 09:46 PM

The basketball court should be larger and fenced in with overweight fences, the balls often go over the ditches and on the road

Screen Name Redacted

11/10/2024 04:57 PM

Accessibility should be highest priority

Screen Name Redacted

11/10/2024 05:38 PM

Certainly there are other neighbourhoods that need more renewal than Burkeville park

Screen Name Redacted

11/10/2024 07:24 PM

Renewing the Burkeville sports courts would revitalize a central space for our community encouraging active lifestyles and social interaction. With their age showing, a refresh would make them safer and more inviting, encouraging people of all ages to stay active and connected in a well-maintained space. Thank you.

Screen Name Redacted

11/10/2024 09:50 PM

Water park, basketball and tennis court repavement and refresh

Screen Name Redacted

11/10/2024 10:25 PM

Better water play fixtures would be nice

Screen Name Redacted

11/11/2024 02:48 AM

The jiffy john is also a safty concern it's hidden behind a wall. Several times I've kicked someone out whis been using and leaving needles behind.

Screen Name Redacted

11/11/2024 09:10 AM

The park could easily accommodate a short disc golf course - or a longer course, if we situate a couple of the holes at airport viewing park. The baskets are quite inexpensive (less than \$200 each), and the only other thing required is a small pad of concrete to "tee off" from. I have ideas for how it might be laid out that I'd love to share with the city. Please email me at smedwoman@shaw.ca Baskets: https://www.amazon.ca/Disc-Golf-Basket-Target-Chain/dp/B094FB5WDK/ref=asc_df_B094FB5WDK/?tag=googleshopc0c-20&linkCode=df0&hvadid=706747096486&hvpos=&hvnetw=g&hvrnd=13715937538139707769&hvpon=&hvptwo=&hvqmt=&hvdev=c&hvdvcmdl=&hvlocint=&hvlocphy=9001568&hvtargid=pla-1417830818821&pvc=1&mcid=0d01800b7ea63f0ab6f37b2230d53c49&gad_source=1

Screen Name Redacted

11/13/2024 08:34 AM

Google images of playgrounds in Israel to learn how to build fun playgrounds.

Screen Name Redacted

11/13/2024 11:57 AM

Looking forward to a future upgrade!

Screen Name Redacted

11/13/2024 07:50 PM

Bball courts with Adult & kids sized hoops for proper reach... Chain nets for durable & long lasting. Pickle ball courts & tennis courts with proper lighting... Proper garbage bins that crows can't get into.. More tables for picnic Tents for shade for picnic tables Tent for play area especially slides get hot easily

Screen Name Redacted

11/14/2024 07:37 PM

Is it possible to incorporate a dog park like south arm, there seems to be a couple locations that would facilitate that. Currently people use a soccer field off Miller. Which doesn't seem to be maintained

Screen Name Redacted

11/14/2024 08:41 PM

- Consider adding another zipline which gets a lot of use so more than 1 group can enjoy.
- more than 1 port-o-potty as we see numerous birthday parties held in the park during summer months along with Burkeville dayz, farmers market and Halloween.
- adding a proper and fenced off dog park.
- levelling grass areas, very easy to roll ankles or get injured if running around with either children or pets.

Screen Name Redacted

11/20/2024 02:51 PM

The tennis court is under-utilized. If a proper set of 2 pickleball courts were to be built, where the current hockey area is, it would attract many more users. Would the basketball court be able to be multifunctional (basketball and hockey). This could make the

basketball court more functional.

Screen Name Redacted

11/21/2024 06:59 PM

All the green space is wonderful. The picnic tables provide a place for families to picnic and they are in close proximity to the playground.

Screen Name Redacted

11/24/2024 12:15 AM

All three courts need re surfacing, and playability for all 3 sports ie(Tennis), (basketball) and even pickleball I suggest that one of the two tennis courts be transformed to host both roller hockey and pickleball and have one exclusive designated tennis court.

Screen Name Redacted

11/26/2024 06:44 PM

I'd like to see an increase in the equipment available, the types of activities, and the size of it. It is enjoyed by both young kids, teenagers, and some parents -- I hope to see that it continues to support all age ranges. It is popular and has large groups (40+ kids some days with groups) so there is a need to support that capacity. More trees to replace those that have been lost, and ensure shade continues to be available in the coming years.

Screen Name Redacted

12/01/2024 08:44 PM

To have better picnic tables.

Screen Name Redacted

12/01/2024 10:50 PM

This neighborhood and park is multigenerational and it is really important to have access accessibility with the new construction. Right now it is not conducive to pushing a stroller and keeping a baby close to you. It also not work for grandparents who use mobility aids to walk around and enjoy with their grandchildren. We have the chance to do this right and make it a park that is worth talking about, and it all comes down to accessibility.

Screen Name Redacted

12/03/2024 03:31 PM

We need to replace some of the trees we've lost lately! I can imagine that basketball court will get a lot more use once re-surfaced. And please can we have some more garbage cans - or have them spread out a bit more? They're all around the main entrances to the park, and we need some more.

Screen Name Redacted

12/05/2024 06:21 PM

I would like to see a wider range of ages considered in the renewal of Burkeville Park. Swings for youth. For the parents, better seating arrangement to promote a sense of community. The current seating is poor and arranged poorly. I think we as a community should have a discussion about the coyotes which frequent the park on an almost daily basis. More challenges for kids ages 6-10 with interactive play. Replace tree by entrance to park and replace trees that have fallen.

Screen Name Redacted

12/08/2024 08:39 PM

The park and facilities is a regular and popular gathering place for Burkeville residents of all ages for various activities. It is a main attraction for my family's move into Burkeville many years ago. Thanks for opening the discussion about renewal and enhancement.

Screen Name Redacted

12/11/2024 03:32 PM

please keep water play and add timers to avoid wastage. current layout is good, just needs a refresh

Screen Name Redacted

12/11/2024 03:36 PM

more seated area for adults watching kids and picnic areas add garden and paths

Screen Name Redacted

12/11/2024 03:39 PM

include garden areas, sand Pitts for toddlers, shade areas with the playground. model after garden city park - great use of natural play spaces, fountains and spread out well for flow of play

Screen Name Redacted

12/11/2024 03:47 PM

more sport activities for sure please basketball courts, full court to also a shorter or ball net for kids size please put better lighting on courts with motion sensors shelter for shade

Screen Name Redacted

12/11/2024 03:49 PM

please be cautious of noise from pickle ball courts, maybe allow only in the farthest tennis court

Screen Name Redacted

12/11/2024 03:52 PM

skate/wheel park so rollerblades, skateboards, scooters, bikes

Screen Name Redacted

12/11/2024 03:55 PM

band shell performance area with power, cover for movie nights (summer), band performances or exhibitions for groups (choir, dance, martial arts) covered area could be retractable

Screen Name Redacted

12/11/2024 03:57 PM

happy you're doing work 600k is not enough since they have not been maintained well over the decades

Screen Name Redacted

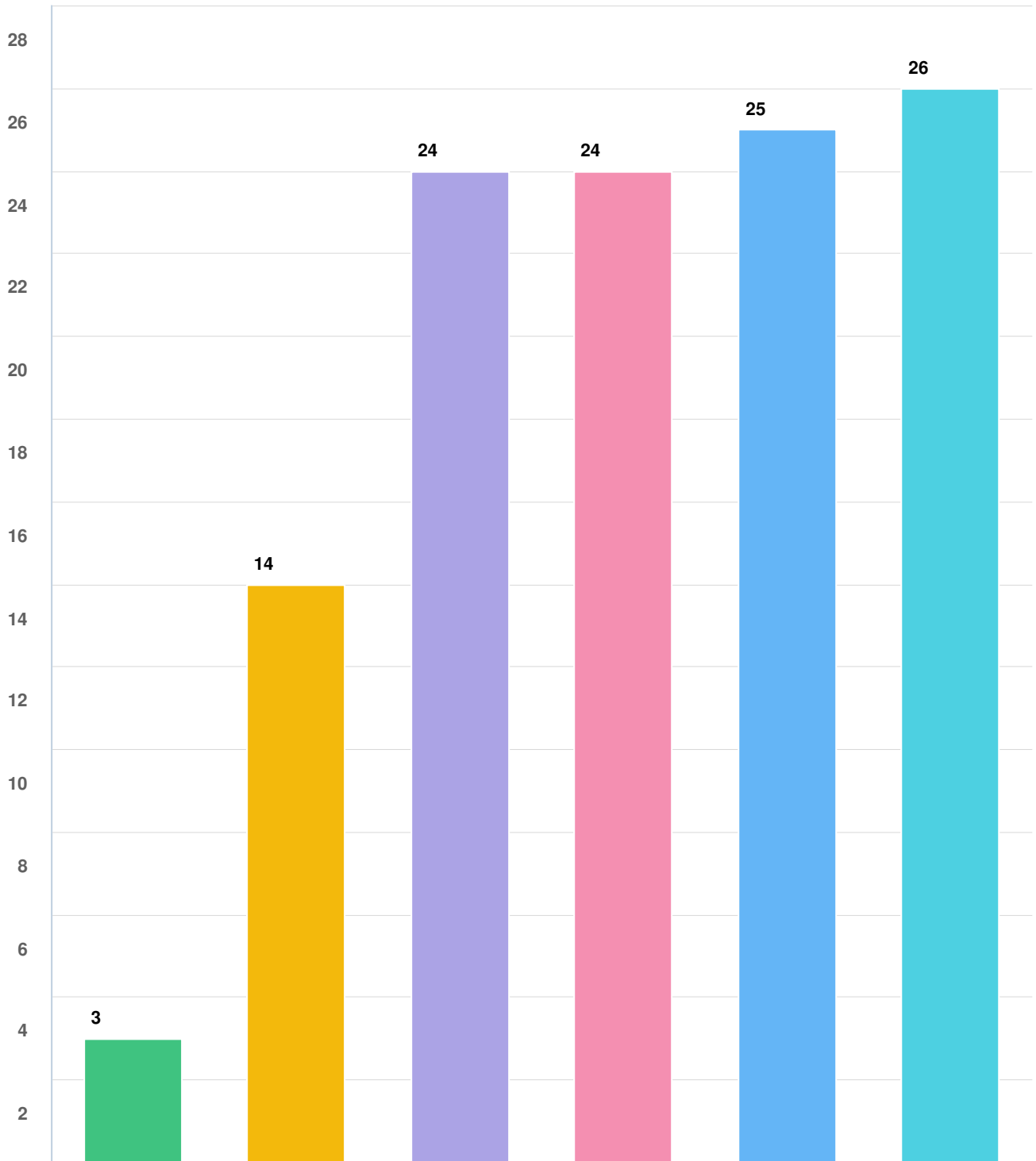
12/11/2024 04:07 PM

further to discussions with Jason & Ian, the biplane still requires follow-up while we understood the contractor / installer did do some upgrades / improvements to fix deficiencies, we also understood that this is NOT the final design version

Optional question (55 response(s), 25 skipped)

Question type: Essay Question

Q5 Children under my care are (check all that apply):

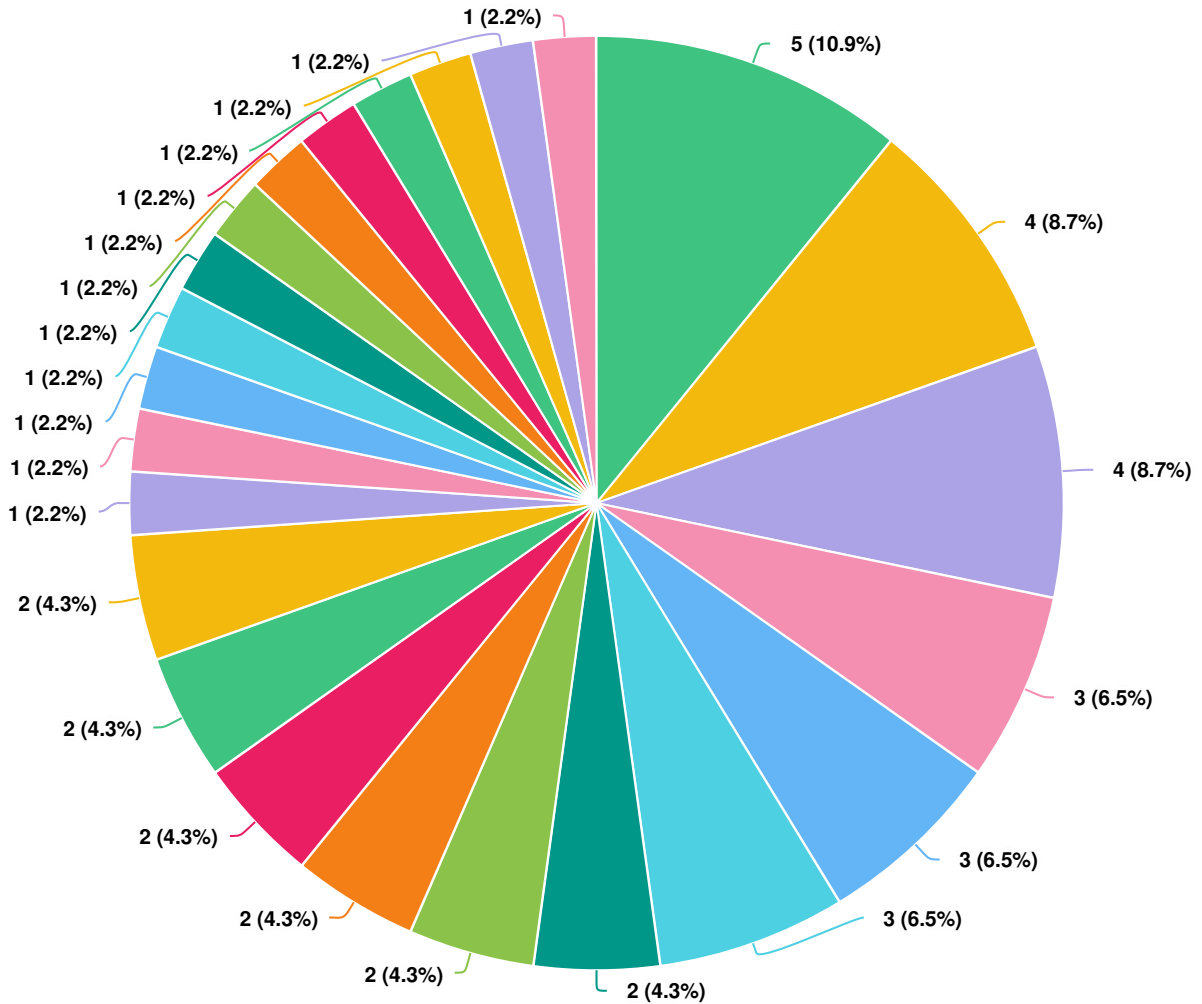


Question options

- 0-2 years old ● 3-5 years old ● 6-8 years old ● 9-12 years old ● 13+ years old ● Not applicable

*Optional question (77 response(s), 3 skipped)
Question type: Checkbox Question*

Q6 My postal code is (optional):

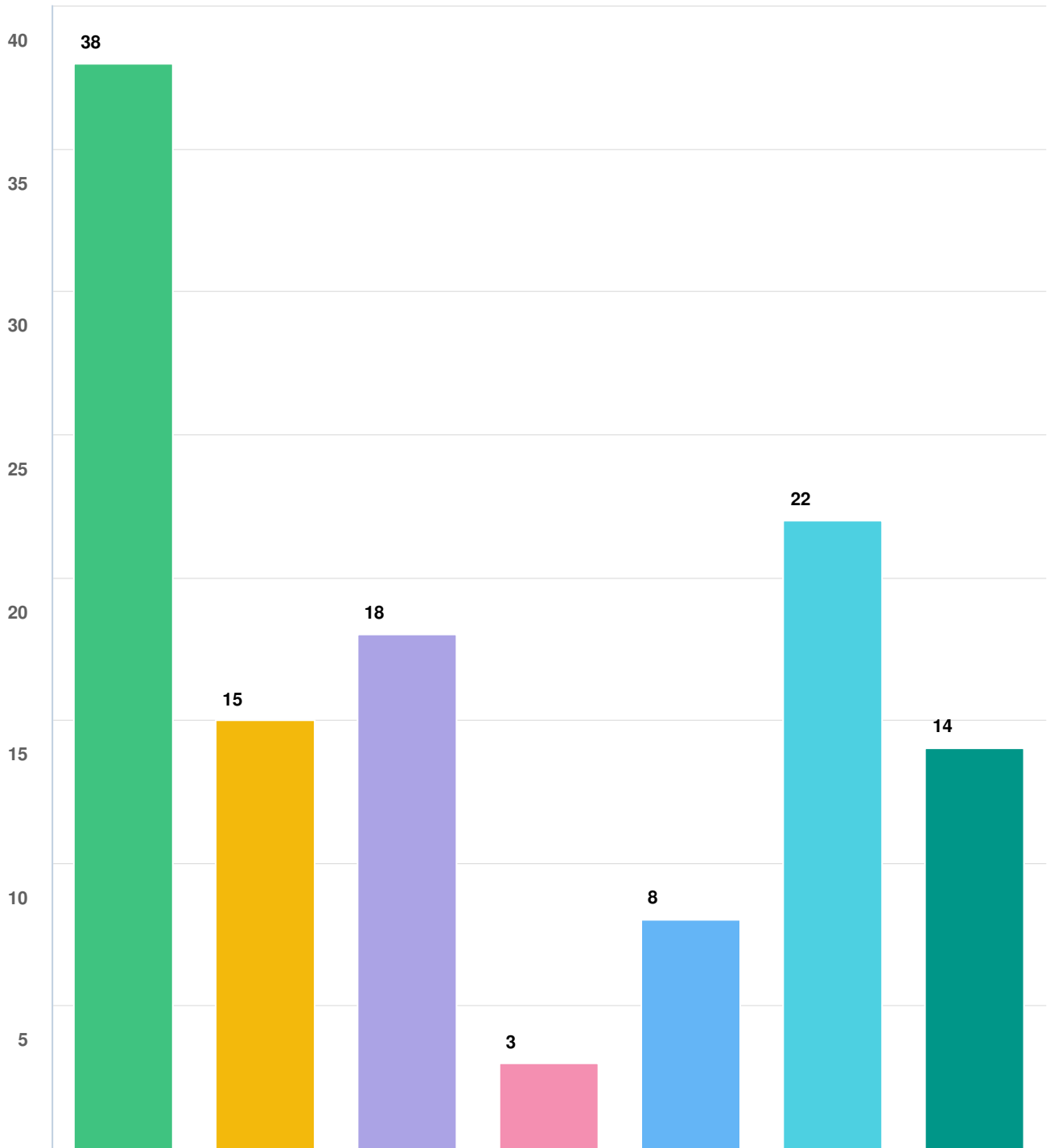


Question options

- Richmond, BC, V7B1G9
- Richmond, BC, V7B1J6
- Richmond, BC, V7B1G6
- Richmond, BC, V6X0J3
- Richmond, BC, V7B1G5
- Richmond, BC, V7B1J8
- Richmond, BC, V7B1L3
- Richmond, BC, V7B1C5
- Richmond, BC, V7B1E5
- Richmond, BC, V7B1E3
- Richmond, BC, V7B1E4
- Richmond, BC, V7C2S7
- Richmond, BC, V7B1H8
- Richmond, BC, V7B1E8
- Richmond, BC, V7B1E6
- Richmond, BC, V7B1E1
- Richmond, BC, V7B1G3
- Richmond, BC, V7B1H7
- Richmond, BC, V7C4T3
- Richmond, BC, V7A1X8
- Richmond, BC, V7B1E9
- Richmond, BC, V6X1N7
- Richmond, BC, V7B1J3
- Richmond, BC, V7B1H8
- Richmond, BC, V7B1G3
- Richmond, BC, V7B1H7

Optional question (46 response(s), 34 skipped)
Question type: Region Question

Q7 I heard about this public consultation via (check all that apply):



Question options

- Postcard mailed to me
- Signage posted in the area
- Social media ad
- Poster at community centre
- On-site open house
- Word of mouth
- Other (please specify)

Optional question (76 response(s), 4 skipped)
Question type: Checkbox Question



Burkeville Neighbourhood Park Renewal – Summary of Engagement Results

The input received via the open houses, hard-copy surveys, and LetTalkRichmond website were summarized, and key findings are outlined below. For the complete summary of the survey results, see Attachment 3.

Playground

The following table outlines the 75 survey participants’ preferences in what play elements they would like to see in the renewed playground:

Play Options	Number of Supporting Responses	Percentage of Supporting Responses*
Climber	42	60%
Monkey Bars	32	43%
Slide	31	41%
Imaginative Play (e.g., boat or plane-inspired equipment)	20	27%
Boulders and Logs	19	25%
Spinner	14	19%
More Swings	12	16%
Seesaw	9	12%
Playhouse	6	8%
Interactive Play Panel	6	8%
Slide Pole	6	8%
Outdoor Musical Instrument	5	7%
Sand	4	5%
Spring Toys	0	0%
Other	10	13%

*Note that the total percentage of each play option does not add up to 100% because each participant could choose up to three options.

The top three popular playground elements are the climber, monkey bars, and slide. All of these are elements included in the current playground and updated versions can be incorporated into the future renewed playground. Imaginative play, natural play elements (boulders and logs), and spinner are also supported by many participants and can be incorporated into the future renewed playground as well.

The survey also provided respondents with opportunities to submit written comments regarding the playground. The following is a summary of the comments received:

- The current playground is regarded as dated and less engaging, especially for older children. Community feedback highlights the need for equipment that caters to a broader age range, particularly for children aged six to 10 and teenagers.
- Suggestions include incorporating natural play elements such as logs and boulders, drawing design inspiration from modern facilities.
- Enhanced safety and accessibility are also suggested as priorities, with requests for rubberized surfacing and improved seating arrangements for parents and communal use.
- Additionally, there is request for designing and providing shade in the park and creating multigenerational spaces that accommodate everyone, from toddlers to grandparents.

Residents also expressed interest in modifications and upgrades to the water play area. Considering the approved capital budget for the Burkeville Neighbourhood Park Renewal, updates to the water play area are beyond the current scope of work. Prior to opening this summer, staff will review the water play area and address any maintenance or safety concerns through existing operating infrastructure budgets.

Sport Courts

The following table outlines the 79 survey participants' preferences in what sport activities they would like to play on the renewed sport courts:

Sport Options	Number of Supporting Responses	Percentage of Supporting Responses*
Tennis	49	62%
Basketball	45	57%
Pickleball	38	48%
Ball Hockey	26	33%
Other	11	14%

*Note that the total percentage of each sport option does not add up to 100% because each participant could choose up to three options.

The survey also provided respondents with opportunities to submit written comments regarding the sport courts. The following is a summary of the comments received:

- The basketball and tennis courts in the park are in poor condition, with uneven surfaces, missing or damaged equipment, and a lack of proper markings. Suggestions to improve these facilities included resurfacing the courts to enhance safety and usability, adding nets and clear line markings for both areas, and consideration of developing multifunctional courts, such as spaces that could be used for basketball and hockey.
- Additionally, there is strong interest in introducing pickleball courts or converting underutilized areas for this increasingly popular activity, provided noise concerns are adequately managed.

- Other desired features for the sport courts include updated fencing and lighting.
- Consider expanded options for fitness or sports facilities, such as skate parks or volleyball courts.

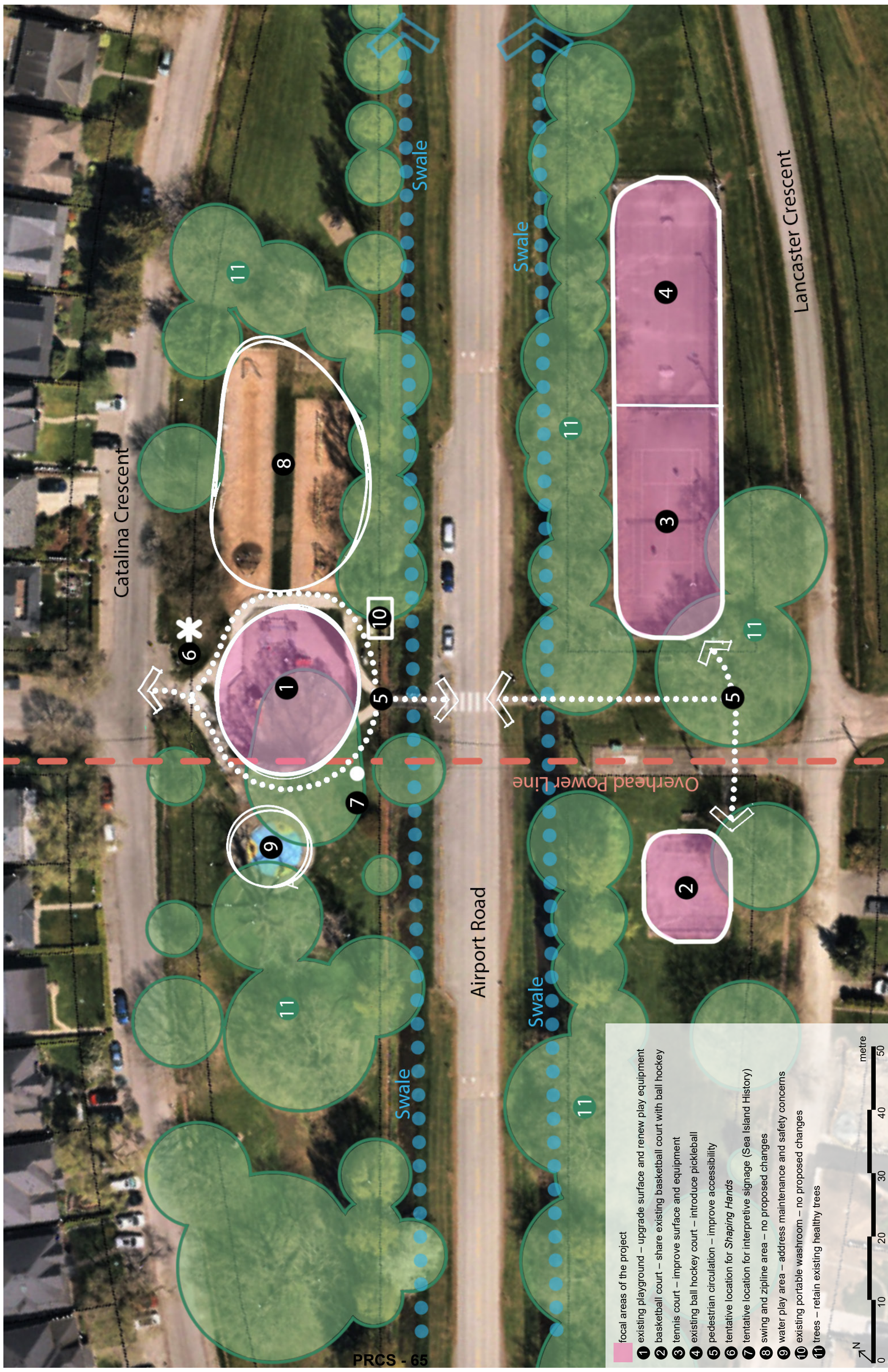
Other General Comments

The following feedback falls outside the scope of the current Burkeville Neighbourhood Park Renewal project. These suggestions will be considered during design development, and/or will be retained for consideration in future renewal projects for the park, and passed onto the asset maintenance team for awareness.

- The park is heavily utilized and serves as an essential community hub, particularly for family gatherings and events such as Burkeville Daze. However, many of its features show signs of wear and tear, with aging structures that require updates. Suggestions for improvements include enhancing accessibility with better washrooms and pathways, as well as adding facilities that cater to a wide demographic, such as walking tracks, exercise equipment, and upgraded washroom amenities.
- Residents expressed a desire to retain the park's charm and emphasize its historical and social significance to the community while upgrading outdated features. There were also calls for smaller additions, such as a disc golf course, to expand the park's recreational offerings.
- The park's trees and green spaces are highly valued for their role in providing shade, moderating temperature, and enhancing the park's aesthetic appeal. Concerns were raised about the loss of large, established trees due to aging and wind events. To address this, residents suggested a focus on tree replacement and ongoing maintenance.
- There was extensive feedback on the water play area, with residents expressing a strong interest in modifications and upgrades.

CONCEPTUAL DESIGN DIAGRAM

Attachment 5



- focal areas of the project**
- 1 existing playground – upgrade surface and renew play equipment
 - 2 basketball court – share existing basketball court with ball hockey
 - 3 tennis court – improve surface and equipment
 - 4 existing ball hockey court – introduce pickleball
 - 5 pedestrian circulation – improve accessibility
 - 6 tentative location for *Shaping Hands*
 - 7 tentative location for interpretive signage (Sea Island History)
 - 8 swing and zipline area – no proposed changes
 - 9 water play area – address maintenance and safety concerns
 - 10 existing portable washroom – no proposed changes
 - 11 trees – retain existing healthy trees

