



**Parks, Recreation and Cultural Services Committee
Electronic Meeting**

**Council Chambers, City Hall
6911 No. 3 Road**

**Wednesday, December 20, 2023
Immediately following the Public Works and Transportation
Committee Meeting**

Pg. # ITEM

MINUTES

PRCS-4 *Motion to adopt the **minutes** of the meeting of the Parks, Recreation and Cultural Services Committee held on November 28, 2023.*



NEXT COMMITTEE MEETING DATE

January 30, 2024, (tentative date) at 4:00 p.m. in the Council Chambers.

COMMUNITY SERVICES DIVISION

- 1. 2023 COMMUNITY SERVICES COMMUNITY NEEDS ASSESSMENT STUDY**
(File Ref. No. 11-7375-02) (REDMS No. 7446010)

PRCS-11

See Page PRCS-11 for full report

Designated Speaker: Mandeep Bains

STAFF RECOMMENDATION

That the findings and recommendations outlined in the staff report titled “2023 Community Services Community Needs Assessment Study”, dated November 15, 2023, from the General Manager, Community Services, be received for information.



2. **TERRA NOVA RURAL PARK HISTORICAL ASSETS PROGRAM PLAN GUIDING PRINCIPLES AND NEXT STEPS**

(File Ref. No. 11-7200-20-01) (REDMS No. 7313039)

PRCS-22

See Page **PRCS-22** for full report

Designated Speaker: Alexander Kurnicki

STAFF RECOMMENDATION

- (1) *That the Terra Nova Rural Park Historical Assets Program Plan Guiding Principles as outlined in the staff report titled “Terra Nova Rural Park Historical Assets Program Plan Guiding Principles and Next Steps,” dated November 15, 2023, from the Director, Parks Services, be endorsed; and*
- (2) *That staff proceed with Phase 2 of the Terra Nova Rural Park Historical Assets Program Plan.*



3. **2024 ENGAGING ARTISTS IN COMMUNITY PROGRAM PUBLIC ART PROJECTS**

(File Ref. No. 11-7000-09-20-089) (REDMS No. 7401791)

PRCS-33

See Page **PRCS-33** for full report

Designated Speaker: Biliانا Velkova

STAFF RECOMMENDATION

That the 2024 Engaging Artists in Community Program Public Art Projects as presented in the staff report titled “2024 Engaging Artists in Community Program Public Art Projects”, dated November 15, 2023, from the Director, Arts, Culture and Heritage Services, be approved for implementation once the Consolidated 5-Year Financial Plan (2024-2028) is adopted by Council.



Pg. # ITEM

4. **MANAGER’S REPORT**

ADJOURNMENT





Parks, Recreation and Cultural Services Committee

Date: Tuesday, November 28, 2023

Place: Council Chambers
Richmond City Hall

Present: Councillor Chak Au, Chair
Councillor Michael Wolfe
Councillor Laura Gillanders
Councillor Andy Hobbs
Councillor Bill McNulty

Also Present: Councillor Carol Day

Call to Order: The Chair called the meeting to order at 4:00 p.m.

MINUTES

It was moved and seconded

That the minutes of the meeting of the Parks, Recreation and Cultural Services Committee held on October 24, 2023, be adopted as circulated.

CARRIED

AGENDA ADDITION

It was moved and seconded

That Gilbert Road Farm Update be added to the agenda as Item No. 3A.

CARRIED

COMMUNITY SERVICES DIVISION

**1. OPPORTUNITY FOR JAPANESE CANADIAN BOAT BUILDER
DISPLAY AT BRITANNIA SHIPYARDS**

(File Ref. No. 11-7141-01) (REDMS No. 7441423)

Emi Sakamoto, representative of the Sakamoto family, expressed support of the proposed project and shared the importance of telling the story of Japanese boat builders in Steveston, noting that the Japanese Canadian Legacies Fund grant provides a great opportunity for Richmond to tell an important part of its history by creating an authentic and unique experience by telling the story of the Japanese people who built boats and worked in the fishing industry in Richmond from the late 1800s until post-World War 2.

In response to queries from Committee, staff noted that (i) to support the anticipated repair work on the *Crystal S*, the one-year additional level funding for the Shipyard Operations Supervisor position would need to be renewed for the length of the project and should Council support this project, a funding request to extend the term of the Shipyard Operations Supervisor will be brought forward as part of the 2025 budget process, (ii) the exhibit concept, including preferred locations for the vessel display and exhibit, will be refined through the development of the application, and there are potential interior locations for immediate display, such as on the ways in the Britannia Shipyard building, (iii) the Shipyard Operations Supervisor is a new position and the work plan for the position will be determined on an ongoing basis, (iv) there are currently no full time programming staff at Britannia Shipyards National Historic Site, (v) the duties of the Shipyard Operations Supervisor will primarily include overseeing restoration, repair, and maintenance of vessels in addition to coordinating some waterfront activities and programming, (vi) they have had preliminary discussions with the administrators of the grant program who are very receptive to this project and they anticipate receiving results of the grant application before summer 2024, and (vii) they are exploring all available avenues for external funding.

It was moved and seconded

- (1) *That staff be authorized to submit an application to the Japanese Canadian Legacies Fund for up to \$400,000 for the creation of a Japanese Canadian Boat Builders Display at Britannia Shipyards as described in the report titled "Opportunity for Japanese Canadian Boat Builder Display at Britannia Shipyards", dated October 25, 2023, from the Director, Arts, Culture and Heritage Services;***

Parks, Recreation & Cultural Services Committee
Tuesday, November 28, 2023

- (2) *That should the funding application be successful, the Chief Administrative Officer and the General Manager, Community Services be authorized to execute the agreement on behalf of the City of Richmond with the Japanese Canadian Legacies Fund;*
- (3) *That should the funding application be successful, the Consolidated Five-Year Financial Plan (2023-2027) be amended accordingly;*
- (4) *That should the funding application be successful, the Chief Administrative Officer and General Manager, Community Services be authorized to negotiate the terms of the Sakamoto donation, including the Crystal S vessel; and*
- (5) *That staff report back to Committee with an update in May 2024.*

CARRIED

2. SPORTS FACILITY NEEDS ASSESSMENT – COMMUNITY ASSOCIATION AND SOCIETY ENGAGEMENT UPDATE

(File Ref. No. 11-7000-10-01) (REMS No. 7405278)

Staff provided an overview of the report, highlighting that staff completed additional consultation on the prioritized list with the community associations and societies that provide recreation programs and services at recreation facilities across Richmond. Through an extensive engagement process with the community associations, support was received from all but one community association and no additional major sports facilities or infrastructure projects were identified, and Richmond Sports Council and the Sports Facilities Task Force reaffirmed their support for the prioritized list.

In response to queries from Committee, staff noted that (i) the relative rank of each of the 14 projects remains unchanged and was determined by assessing each project with the Sport Facility Prioritization Framework's criteria using supporting research, data and information that was gathered about each project, (ii) several significant amenity replacement or improvement projects have been completed or are in progress since this assessment began, including the completed installation of nine pickleball courts, (iii) additional outdoor tennis and basketball courts are currently well provided across the City, (iv) the report also includes consideration of the Richmond Tennis Club proposal, and (v) staff have been meeting regularly with the Richmond Rod and Gun Club and Richmond Gymnastics Association regarding their future and potential licence agreement extensions.

Parks, Recreation & Cultural Services Committee
Tuesday, November 28, 2023

It was moved and seconded

That the prioritized sport facility and infrastructure list be received and endorsed in principle for consideration in future corporate facility or park plans as outlined in the staff report titled “Richmond Sports Facility Needs Assessment – Community Association and Society Engagement Update”, dated October 20, 2023, from the Director, Recreation and Sport Services.

The question on the motion was not called as discussion ensued regarding (i) the prioritized sport facility and infrastructure list, (ii) emerging sports, (iii) the need for increased facilities in east Richmond, and (iv) the suggestion that all projects be considered as equal priority. Committee requested that staff provide Council with the raw scores matrix for each individual category for each facility, the final scores of each sport facility in priority order, and the number of participants in each group.

In regards to the prioritized list, staff highlighted that (i) the projects that ranked highest are experiencing increasing participation rates, (ii) are demonstrating growth in demand, (iii) are multipurpose in nature, (iv) meet the needs of multiple sport and community groups, (v) and/or may also offer opportunity for unstructured use, benefiting the overall community.

As a result of the discussion, the following **amendment motion** was introduced:

It was moved and seconded

That the motion be amended to add:

- (2) *That, should opportunities arise, the priority list can be changed; and*
- (3) *That staff continue to outreach and find opportunities to engage people and groups in emerging sports.*

The question on the amendment motion was not called as further discussion ensued.

In response to queries from Committee, staff noted that (i) demographics and population growth were included in the weighted criteria that together provided an overall indication of the demonstrated need for a project, (ii) sports facilities east of No. 6 Road include McLean Park and Hamilton Community Park, offering a range of amenities including basketball and tennis courts, baseball diamonds, and a sports field, (iii) the focus of this report was sport-specific facility needs, and (iv) community associations are also responsible for providing services outside of community centres.

Parks, Recreation & Cultural Services Committee
Tuesday, November 28, 2023

The question on the main motion as amended, which reads as follows:

- (1) *That the prioritized sport facility and infrastructure list be received and endorsed in principle for consideration in future corporate facility or park plans as outlined in the staff report titled “Richmond Sports Facility Needs Assessment – Community Association and Society Engagement Update”, dated October 20, 2023, from the Director, Recreation and Sport Services;*
- (2) *That, should opportunities arise, the priority list can be changed; and*
- (3) *That staff continue to outreach and find opportunities to engage people and groups in emerging sports.*

was then called, and it was **CARRIED**.

3. GARDEN CITY LANDS SOIL MANAGEMENT PRACTICES AND PROJECT UPDATE

(File Ref. No. 06-2345-20-GCIT1) (REDMS No. 7417777)

In response to queries from Committee, staff noted that (i) the City has a contract with a commercial waste management company, GFL, to compost household green waste, which has not been used on KPU's farm, as it does not meet the standards consistent with the farm's certified organic status, (ii) the Environmental Programs department continue to work with GFL to address the concerns related to soil quality concerns, (iii) Environmental Programs staff continue to source other Richmond, Surrey, or Delta farm sites with suitable soil, (iv) leaf collection and composting undergoes a screening process and results in a beneficial soil amendment that is subsequently redistributed back into the park system, (v) the City's on-site annual mowing program has evolved over the years, and (vi) a rare flowering plant, the Vancouver Island Beggarticks, has been identified at several locations throughout the site.

It was moved and seconded

That the staff report titled “Garden City Lands Soil Management Practices and Project Update”, dated October 27, 2023, from the Director, Park Services be received for information.

CARRIED

3A. GILBERT ROAD FARM UPDATE

(File Ref. No.)

Staff provided a brief update on the Gilbert Road Farm, noting that the site is leased to KPU Richmond Farm School, operated by KPU's Institute for Sustainable Food Systems and includes the KPU Orchard, incubator farm, and a research component.

Parks, Recreation & Cultural Services Committee
Tuesday, November 28, 2023

4. **MANAGER'S REPORT**

(i) ***No. 3 Road Bark Park Community Engagement Process***

Staff shared details of the community engagement process regarding the No. 3 Road Bark Park safety enhancements, highlighting that an online survey on Let's Talk Richmond is available until January 7, 2024, and two public open houses will be taking place on November 28, 2023 at City Hall, and December 2, 2023 at the No. 3 Road Bark Park.

(ii) ***Tree Plantings***

Staff highlighted various significant tree-planting activities throughout the City this fall, including planting approximately 300 trees at Hamilton Highway Park, 240 trees at Terra Nova Rural Park, and the removal and replanting of approximately 30 trees in the city centre.

In response to queries from Committee, staff noted that (i) the removal of the entire roots system is necessary for the new trees to be successful, and (ii) the trees planted at Hamilton Highway Park and Terra Nova Rural Park are mainly deciduous and all native trees, while the trees planted in the city centre area are deciduous, climate adapted species suitable for the environment, with the species chosen specifically for the site conditions.

(iii) ***Richmond Stories Video Series***

Staff shared details of the *Richmond Stories* video series, which launched in January, and tells ten of Richmond's most compelling and important stories. The videos are shown at the Richmond Museum, Richmond Archives, and other locations throughout the City.

(iv) ***Brighthouse Park Bathrooms***

In response to queries from Committee, staff noted that they will be re-evaluating the use of park ambassadors in the spring.

ADJOURNMENT

It was moved and seconded
That the meeting adjourn (5:16 p.m.).

CARRIED

Parks, Recreation & Cultural Services Committee
Tuesday, November 28, 2023

Certified a true and correct copy of the Minutes of the meeting of the Parks, Recreation and Cultural Services Committee of the Council of the City of Richmond held on Tuesday, November 28, 2023.

Councillor Chak Au
Chair

Shannon Unrau
Legislative Services Associate



City of Richmond




Report to Committee

To: Parks, Recreation and Cultural Services Committee
From: Elizabeth Ayers
General Manager, Community Services
Date: November 15, 2023
File: 11-7375-02
Re: 2023 Community Services Community Needs Assessment Study

Staff Recommendation

That the findings and recommendations outlined in the staff report titled “2023 Community Services Community Needs Assessment Study”, dated November 15, 2023, from the General Manager, Community Services, be received for information.

Elizabeth Ayers
General Manager, Community Services
(604-247-4669)

REPORT CONCURRENCE		
ROUTED TO:	CONCURRENCE	CONCURRENCE OF GENERAL MANAGER
Community Social Development	<input checked="" type="checkbox"/>	
SENIOR STAFF REPORT REVIEW	INITIALS: 	APPROVED BY CAO 

Staff Report

Origin

As part of the 2019 City budget, Council approved funding for the Community Services Division (the Division) to conduct a Community Needs Assessment. Due to the pandemic, the implementation of the project was delayed until the fall of this year. The Division has conducted three previous community level needs assessments in 2001, 2009 and 2015 to support parks, recreation and cultural services planning and delivery. These studies allow the City to consider resident perspectives in the context of current and projected population and demographic information, current and emerging behaviour trends related to parks, recreation and culture, and identify needs across segments of the population, to subsequently inform responsive future planning efforts.

This report supports Council's Strategic Plan 2022-2026 Focus Area #1 Proactive in Stakeholder and Civic Engagement:

Proactive stakeholder and civic engagement to foster understanding and involvement and advance Richmond's interests.

This report supports Council's Strategic Plan 2022-2026 Focus Area #6 A Vibrant, Resilient and Active Community:

Vibrant, resilient and active communities supported by a wide variety of opportunities to get involved, build relationships and access resources.

This report supports the five Focus Areas and actions from the City of Richmond Wellness Strategy 2018-2023, and the seven Focus Areas and actions from the Recreation and Sport Strategy 2019-2024.

The purpose of this report is to provide a summary of the findings from the study and outline recommendations, and next steps.

Analysis

Background

The 2023 Community Needs Assessment study (the Study) provides an enhanced and in-depth understanding of resident perspectives on the Division's programs, services and facilities. The objectives of the Study are to highlight areas of strengths and where the Division is doing well in meeting needs of the community and to shed light on unmet needs, gaps in services and programs, and areas requiring improvement to support parks, recreation, cultural and library services' planning and delivery.

Key research focus areas of the Study include:

1. Usage of programs and services, and perceptions of quality, accessibility and inclusion;
2. Awareness and relevance of Community Services programs and services; and
3. Impact and contribution of programs and services to well-being.

Methodology

To inform a comprehensive understanding of community needs and inform actions that the Division may take to enhance community well-being through its programs, services and facilities, information from the community was collected using three methodologies:

1. One thousand (1,000) Richmond residents participated in a phone survey, which was the primary tool used to solicit insights from the community. The survey, offered in English, Cantonese, and Mandarin, was conducted over the period of February 16 – March 13, 2023. The representative survey sample of 1,000 residents reflected the community's 2021 Census Profile and considered demographic factors, such as area of residence in Richmond, age, gender, and primary language spoken at home.
2. Five hundred and four (504) residents completed an online survey hosted on Let's Talk Richmond. The survey was available in English, and simplified and traditional Chinese, available from February 16 – March 13, 2023.
3. Fifty two (52) participants attended one of eight focus groups held over April 25 – 27, 2023. Focus groups were conducted to supplement the community-wide phone survey and were targeted to recent immigrants, adults aged 55+, and adults aged 18 to 54 years, with the intent of better understanding what prevents non-users from participating in Community Service's offerings and to identify unmet needs. The sessions were conducted in English, Mandarin and Cantonese. Translation services in diverse languages were also available.

Additionally, a review of relevant documents, policy, administrative data and existing literature was conducted to place the results in a wider City and socio-demographic context.

Communication and Recruitment

The communication and recruitment approach to the study aimed to achieve inclusive and representative community participation throughout the data collection and communication process. Communication efforts to inform and promote these engagement opportunities to the community included a project webpage, news release, newspaper advertisements (in English and Chinese language papers), multi-language posters, a segment in the Community Services e-newsletter, social media posts, reader boards at community centres, digital bus shelter advertisements, and outreach through stakeholder groups.

Community association/societies were invited to provide input on the online survey, supported the promotion of the phone survey and assisted in identifying and recruiting participants for the focus groups.

With the goal to connect with harder to reach groups and ensure diverse voices were represented, focus group recruitment also involved active outreach and leveraging partnerships with community partner organizations that support more vulnerable communities. In an effort to make participation low-barrier, arrangements were made to provide participants with taxi vouchers and interpreters for

their preferred language. Also, Community association/societies provided parking passes and free childminding services to support participation.

Findings and Recommendations

The findings and considerations are a compilation of data collected from the phone survey, comments received through Let's Talk Richmond, and focus group conversations, which allowed staff to delve more deeply into stories and circumstances, particularly of vulnerable residents.

The insights shared by all participants through this Study are invaluable to understanding community need, optimizing future planning and addressing potential gaps. The provided recommendations seek to increase the impact and reach of the Division as population growth, changing demographics and cityscape, and evolving behaviour trends and patterns continually influence the community. As well, in many instances, recommendations build and/or expand on initiatives and practices already being undertaken to address the gaps and areas of improvement raised.

The main findings, considerations and recommendations from the Study for each of the three focus areas are presented below. The first section summarizes insights for the Division, followed by a section focused on Library Services.

Community Services Findings and Recommendations

Focus Area 1: Usage of programs and services, and perceptions of quality, accessibility, and inclusion

1. Strengths

1.1 Overall usage levels are high and residents make excellent use of the Division's facilities, programs and services:

- 98.9 per cent of residents are using a service at least once a year, 93.4 per cent once a month, and 83.7 per cent at least once per week (whether recreation, sport, parks, arts, culture, heritage or library programs).
- Community centres, fitness and aquatic facilities, casual physical activities (swimming and skating), and special events and festivals are among the most frequently used offerings.

1.2 Given that participation levels are high, it is not surprising that the percentage of respondents that reported an actual or perceived barrier to their participating is relatively low:

- 90 per cent indicated that they do *not* experience any barriers to participation in facilities or programs due to a disability.

1.3 Residents feel Community Services places and spaces are welcoming and inclusive:

- 77 per cent of residents indicated that they felt welcome at programs, services and facilities.
- 84 per cent noted that the Division's programs and spaces enhance social connections between Richmond residents.

2. *Considerations*

2.1 Lower use of the Division's programs, services and facilities was found among:

- 16–24 year olds.
- Residents who are not primary English or Mandarin speakers.
- Lower income households (earning less than \$50,000 per year).

2.2 Although there is little indication of barriers to participation, 10 per cent of respondents did note experiencing barriers to participation in facilities or programs due to a disability.

2.3 Items impacting the ability to participate in programs, facilities and activities, noted by residents include:

- Lack of personal time or being too busy (53 per cent), was most commonly cited by residents as the primary reason for not being able to participate in programs or activities, or utilize facilities.
- Community centre membership policies, more specifically, only being able to use one's membership at a predetermined location, was noted as a limitation.
- The capacity of popular programs offered at prime times.

3. *Recommendations:*

3.1 Undertake additional consultation with segments of the population that have lower usage levels: 16–24 year olds, residents who are not primary English or Mandarin speakers and lower income households (earning less than \$50,000 per year), to support planning efforts.

3.2 Explore program and service delivery options to find innovative ways to expand capacity for high-demand and/or popular programs.

3.3 Continue to review, maintain and invest in Community Services infrastructure in alignment with population growth and cityscape changes over time to support accessible spaces and places, and protect highly used and valued City amenities.

3.4 Investigate innovative ways to increase physical activity, support health and well-being outcomes, and improve understanding of these outcomes among groups indicating lack of time as a barrier.

- Collaborate with the Community Social Development Department on the evaluation of the Recreation Fee Subsidy Program to determine ways to increase awareness, improve processes and assess eligibility requirements and thresholds to support lower income households.
- Review membership rules and policies, explore options that support the removal of barriers, enhance access to facilities and programs, and improve flexibility.
- Develop and regularly review divisional and departmental key metrics to inform planning and decision making (e.g., establishing maintenance standards).

3.5 Explore options to improve access for users who may have accessibility challenges.

Focus Area 2: Awareness and relevance of Community Services programs and services*1. Strengths*

- 1.1 Both printed and digital sources are being utilized by residents to find information about Community Services programs, events and activities:
- The City's website (68 per cent) is the most popular source of information.
 - 41 per cent of respondents indicated they turn to the local English language newspapers for information.
 - 35 per cent noted they look to facility specific program brochures for information.
- 1.2 The Division's program, services and facilities are, for the most part, relevant and meeting the needs of the community:
- 75 per cent of survey respondents noted that the programs they participated in during the past year met their and their household's needs.

2. Considerations

- 2.1 Usage percentage levels indicate there is an opportunity to do more to build awareness, and further enhance promotion and information sharing:
- Residents would like to have more information that is readily accessible, that is information that "comes at them" rather than them having to seek and source information.
- 2.2 Although the Division is doing well in meeting the needs of residents, differences in needs were observed for select age groups and demographic characteristics:
- Recent immigrants are seeking more opportunities that have a specific focus on meeting new people, engaging with their neighbours and learning about the community.
 - Adults under 55 years-old feel "left out" and programs are not aligned with their needs. They are looking for more diverse and expanded program opportunities.
 - Parents with young children would like to see children's activities offered at the same time and location as their adult activities.
 - Residents would like to see more variety and higher quality of arts programming, exhibits, and performances.

3. Recommendations

- 3.1 Explore ways to enhance social media presence and digital marketing campaigns as well as determine appropriate use of print methods to broaden the reach of communication and marketing efforts. Adapt awareness building initiatives in alignment with community need.
- 3.2 Evaluate divisional and departmental marketing and communication activities, and initiatives to improve coordination, cross-promotion, effectiveness and outreach.
- 3.3 Review and build evaluation mechanisms to track effectiveness of communication and marketing initiatives, and strategies.

- 3.4 Undertake additional consultation to better understand program needs of adults under the age of 55, families with young children and needs for arts programming, exhibits, and performances.
- 3.5 Collaborate with the Community Social Development Department to determine ways to foster social connections for immigrants seeking opportunities to meet new people, engage with their neighbours and learn about the community.

Focus Area 3: Impact and contribution of programs and services to well-being

1. Strengths

- 1.1 Residents recognize the value and contribution of the Division's programs, services, and facilities, to personal development and well-being as well as to their households. The top three individual benefits cited by respondents include:
 - Improved health or increased physical activity (76 per cent).
 - Improved skills and abilities (38 per cent).
 - Learning something new (30 per cent).
- 1.2 A high percentage of residents recognize that Community Services programs, services and facilities play a beneficial role in, and are important to achieving personal benefits and benefits across the broader community:
 - 90 per cent of respondents indicated that they strongly agree or agree that Community Services programs and spaces enhance the community's well-being.
 - 80 per cent of residents felt that Community Services programs and spaces provide important opportunities for children and youth to socialize.
 - 83 per cent indicated that Community Services programs and spaces provide good opportunities for older people in the community to stay connected or engaged.

2. Considerations

- 2.1 Residents re-affirmed the value and impacts of the significant work that transpires through the Division, however there is an opportunity for the Division to do more to build awareness of the contributions of its programs, services and facilities, and benefits to the community.

3. Recommendations

- 3.1 Inject a renewed focus on promoting the benefits of participating in Community Services programs, services and facilities in communication and marketing efforts.

Library Services Findings and Recommendations

Focus Area 1: Usage of programs and services, and perceptions of quality, accessibility and inclusion

1. Strengths

- 1.1 The library is open seven days per week from Monday to Sunday, with weekday hours being 9:00 a.m. to 9:00 p.m. and weekend hours being 10:00 a.m. to 5:00 p.m., at all locations:

- The library maintains some of the best operational hours in the province.
- Many focus group respondents indicated the library was their favourite community service space.
- Focus group respondents indicated they would like to use the library more often.

1.2 The Library provides strong support for new comers and non-English speakers in collections, services and programs:

- Library users who spoke English and Chinese noted that they do not experience barriers to participation in library services or programs.
- Among focus group participants who are new to Canada, the library was one of their first stops to learn more about their new home.

2. *Considerations*

2.1 Residents who primarily use languages other than English, Cantonese or Mandarin at home were 50 per cent more likely to wish libraries were easier to use.

3. *Recommendations*

3.1 Consider expanding services and collections and explore diversifying digital content to include more languages to meet the needs of residents who primarily use languages other than English, Cantonese or Mandarin at home.

3.2 Assess avenues to better identify, for the community, the dialects and languages spoken by staff that can assist in removing barriers to access.

3.3 Explore options to expand the multilingual collection when space planning for new library facilities.

3.4 Determine how to simplify access for non-English speakers and newcomers as part of the Richmond Public Library website priority project for 2024.

Focus Area 2: Awareness and relevance of programs and services

1. *Strengths:*

1.1 Overall usage levels are strong and residents visit the Richmond libraries with regular frequency:

- Survey respondents aged 16–24 years were most likely to visit the library over any other age cohort and more than other Community Services areas.
- Borrowing library materials (75 per cent), holds pick up (32 per cent) and attending events and programs (11 per cent) are among the most frequently used library services.

1.2 Richmond libraries are recognized as knowledge repositories, information hubs and safe spaces that are both welcoming and inclusive:

- Across community centres and libraries, 77 per cent of residents indicated that they felt welcome at programs, services and facilities.

2. *Considerations*

- 2.1 58 per cent of phone respondents indicated they visited at least one Richmond library location at least once in the last year and 29 per cent indicated they visited the library at least once per week or more.

3. *Recommendations:*

- 3.1 Usage and visitation percentages indicate there is room for growth and improvement:
- Assess how to improve communication and marketing strategies to expand the library's reach to residents who may not be aware of the diverse range of services available at the library.
 - Explore practical service solutions that can be implemented to make it easier for our community to use the library more.
 - Prioritize collection enhancements in physical books and digital content in response to community suggestions.
 - Assess service models for facilities including extended evening, weekend and holiday hours.
 - Explore options to improve access for users who may have accessibility challenges.
 - Identify cross-promotion opportunities with other Community Services offerings for 16–24 year old's, given that this cohort already uses the library extensively, which could support increased participation by this group in other Community Services programs, services and facilities.

Focus Area 3: Impact and contribution of programs and services to well-being

1. *Strengths:*

- 1.1 Richmond libraries are recognized as vibrant and evolving centres of community life. Research shows that intangible values can be tied to public libraries, including:
- As a place or centre of community, and contributes to the overall provision of community empowerment and development.
 - Plays a pivotal role in providing access to social and cultural well-being.
 - Enhances cultural understanding, and upholds democratic values by providing a central location where residents can equally meet across demography and culture.
 - Supports values of equity, diversity, and inclusion through programs and collections.

2. *Considerations and Recommendations:*

- 2.1 Consider developing new programs and policies to support the library's key role in creating a safe space for community to engage in dialogue about divisive topics, and to advocate for intellectual freedom and freedom of speech.
- 2.2 Explore avenues of funding to support continued collaboration with the City in expanding *Community Services Pop Ups* to connect more residents in need with the appropriate community resources and supports.

2.3 Work to pursue new partnerships to ensure user awareness of available social services in our community to continue to serve all residents, including the most vulnerable.

2.4 Assess co-location of social services or volunteer organizations with, or even within libraries when planning for new facilities.

Community Services Next Steps

Following this information gathering phase, next steps entail sharing and disseminating learnings, and exploring avenues to advance the recommendations, including but not limited to:

- Continue to assess the data collected to further learnings.
- Develop a communication plan to disseminate and share the findings of this study with the community, key stakeholders and Community Services delivery partners (e.g., workshops, printed material, presentations, etc.).
- Develop guides and resources to ensure staff and encourage partners to become familiar with the findings to support planning and decision-making, and to address identified needs.
- Develop implementation strategies and actions plans for the recommendations to enhance the understanding, integration, and development of strategies/initiatives to act upon the findings and recommendations.
- Collaborate with community partners and community stakeholders to strategize and find ways to meet the needs of the community.

A summary of findings will be shared and made available to residents via the City's website.

Library Services Next Steps

The recommendations made from the Study will be used to inform future library collections, services and program planning and help to highlight areas where gaps in services may exist. To advance the recommendations, next steps will include:

- Employ data to inform the Library's 2023 Strategic Planning currently in progress.
- Develop collection resources to further enhance community development, empowerment and cultural understanding.
- Widen the use of library spaces through new community partnerships to increase safe gatherings, promote awareness of available social services and to support well-being.
- Work with the City to align enhancements to marketing and communication.

A link on the Richmond Public Library's website to the summary of findings will be made available to residents through the City's website.

Financial Impact

None.

Conclusion

The findings from the Community Services Community Needs Assessment highlight that residents value and benefit from the plethora of quality recreation, sport, parks, arts, culture, heritage and library programs, services and facilities. It also emphasizes and affirms their role and contribution to individual and community health and well-being, enhancing quality of life, and supporting a more active, creative, and connected community. Staff will proceed with the preparation and implementation of actions to advance the next steps outlined.



Mandeep Bains
Manager, Community Services Planning and Projects
(604-247-4479)



City of Richmond

Report to Committee

To: Parks, Recreation and Cultural Services Committee
From: Todd Gross
Director, Parks Services
Date: November 15, 2023
File: 11-7200-20-01/
2023-Vol 01
Re: Terra Nova Rural Park Historical Assets Program Plan Guiding Principles and Next Steps

Staff Recommendation

1. That the Terra Nova Rural Park Historical Assets Program Plan Guiding Principles as outlined in the staff report titled "Terra Nova Rural Park Historical Assets Program Plan Guiding Principles and Next Steps," dated November 15, 2023, from the Director, Parks Services, be endorsed; and
2. That staff proceed with Phase 2 of the Terra Nova Rural Park Historical Assets Program Plan.

Todd Gross
Director, Parks Services
(604-247-4942)

Att. 2

REPORT CONCURRENCE		
ROUTED TO:	CONCURRENCE	CONCURRENCE OF GENERAL MANAGER
Arts, Culture & Heritage	<input checked="" type="checkbox"/>	
Policy Planning	<input checked="" type="checkbox"/>	
Recreation & Sport Services	<input checked="" type="checkbox"/>	
SENIOR STAFF REPORT REVIEW	INITIALS: 	APPROVED BY CAO

Staff Report

Origin

In 2004, Council endorsed the Terra Nova Concept Plan and received the Terra Nova Conservation Review in 2014. In December 2015, Council endorsed a Capital Budget Submission for the Park Characterization of Terra Nova Rural Park (the Site) for the purposes of activating the park with programming. With capital funding approved by Council, staff initiated the Terra Nova Rural Park Historical Assets Program Plan (Program Plan) process.

The Program Plan is currently nearing the completion of Phase 1, with the drafting of the Terra Nova Rural Park Historical Assets Program Plan Guiding Principles (Guiding Principles) and beginning the community engagement process. The Guiding Principles will inform the ongoing development of the Program Plan and be a continual reference during the planning process.

The purpose of this report is to outline the next steps in the process and seek Council's endorsement of the proposed Guiding Principles.

This report supports Council's Strategic Plan 2022-2026 Focus Area #1 Proactive in Stakeholder and Civic Engagement:

Proactive stakeholder and civic engagement to foster understanding and involvement and advance Richmond's interests.

1.3 Increase the reach of communication and engagement efforts to connect with Richmond's diverse community.

1.4 Leverage a variety of approaches to make civic engagement and participation easy and accessible.

This report supports Council's Strategic Plan 2022-2026 Focus Area #6 A Vibrant, Resilient and Active Community:

Vibrant, resilient and active communities supported by a wide variety of opportunities to get involved, build relationships and access resources.

6.1 Advance a variety of program, services, and community amenities to support diverse needs and interests and activate the community.

6.2 Enhance the City's network of parks, trails and open spaces.

6.5 Enhance and preserve arts and heritage assets in the community.

Analysis

Background

The 63-acre Site is the result of a long history of community involvement starting in the late 1980s with preserving the former farmland for park purposes. Preservation of the Site culminated in 1996 with a referendum approving the acquisition and development of Terra Nova as a park.

While this land was being assembled, an inventory and analysis of the biophysical, historical and landscape character features were completed. This information was invaluable in identifying and assessing the cultural and ecological values of the different parts of the park and were used as the background context for the development of the Terra Nova Concept Plan in 2004.

Consistent with the 2004 Terra Nova Concept Plan, this community-wide park has evolved to focus on stabilizing, preserving and enhancing the environmental and cultural assets of the landscape. This included daylighting the buried slough, constructing the community gardens and the Sharing Farm, creating universally accessible paths, implementing way-finding signage, installing public art, constructing the Terra Nova Adventure Play Environment, and the restoration of several assets in the Terra Nova Historical Area. The park also hosts recreational assets and activities including the Terra Nova Nature School, a preschool and fresh air-learning program operated by the Thompson Community Association, as well as nature-based programming including Barn Owl and Tree Swallow nest boxes. The Sharing Farm Society and Urban Bounty host popular food security and urban agricultural activities for Richmond residents and contribute to the Site's stewardship.

The Terra Nova Historical Area refers predominantly to the land in the northwest quadrant of Terra Nova. This location is historically significant due to its historical use by the Musqueam First Nations. In the late 1800's, migrants from the Maritimes and Japan, along River Road also settled in the area.

The historical features of the area include historical buildings, remnants from agriculture and fishing-related past uses, and a cultivated landscape highlighting early settlement and development on Lulu Island.

Terra Nova Rural Park Historical Assets Program Plan

The purpose of the Program Plan is to identify priorities and strategies to allocate space to present and future users for the heritage buildings, other underutilized buildings, and the cultural landscapes within the Site. Preservation, adaptive re-use and equitable allocation of these assets will result in an increased level of service for Richmond residents to a broad range of community partners.

The Program Plan will provide recommendations for potential facility upgrades of the existing built assets for future program use. A decision making process that will provide staff with a clear, open and transparent way to evaluate future program proposals provided by present and future community partners will be developed. Additionally, a framework will be created, allowing staff to evaluate the needs of community partners in comparison to the capacity of the

park's indoor and outdoor spaces to support their activities. Ultimately, the intent of the Program Plan is to find a balance where the Site is utilized to its maximum capacity, providing a broad range of programming options in alignment with the Terra Nova Concept Plan while respecting the capacity of the parks' built and natural assets to host users, events and programs.

Park Historical Assets

The Site is home to a number of historical park assets. They are a part of the Program Plan because they either host current uses or will potentially be utilized in the future based on their capacity and potential program needs. The assets the Program Plan will include are:

1. Parsons House (2640 River Road): listed on the Heritage Inventory and also on the Heritage Register. It is currently unrestored and vacant;
2. Edwardian Cottage (2680 River Road): listed on the Heritage Inventory and fully restored. Currently used by Thompson Community Association for the Terra Nova Nature School;
3. Cannery Store (2760 River Road): listed on the Heritage Inventory with external rehabilitation work completed, but the interior is unrestored and vacant;
4. Mellis House (2840 River Road): listed on the Heritage Inventory and also on the Heritage Register. Currently unrestored, in very poor condition and vacant; and
5. Natural park assets (throughout the park and along River Road): view corridors and natural landscape assets including meadows, wooded areas, drainage ditches, hedgerows, the slough and historical pilings: currently not interpreted.

A heritage conservation review of the buildings and other historical assets on the Site was conducted in 2014, and although they have significant historical value, they currently do not hold formal heritage designations. These assets have been identified by staff and considered by Council as a major facility project in the next 10 year timeframe.

Additional Park Assets

In addition to the abovementioned historical assets, two other assets fall within the Site that have been included in the Program Plan to ensure alignment of future uses for the Park as a whole. These assets include:

1. Terra Nova Red Barn (2631 Westminster Highway): multipurpose room and commercial kitchen rented by community partners; and
2. City-Owned Home (2380 Westminster Highway): a recently acquired residential house that is vacant.

A map showing the included assets in the Program Plan can be seen in Attachment 1.

Program Plan Development Process

The development of the Program Plan is comprised of three phases. They are:



We are currently at the end of Phase 1 of the planning process. In order to further proceed with the Program Plan, Council's consideration and endorsement of the Program Plan Guiding Principles is required.

Program Plan Guiding Principles

The eight Guiding Principles (below) will inform the development of the Program Plan's concept options which will occur in Phase 2 of the process. Having the Guiding Principles in place will assist staff and community partners alike to ensure the completed Program Plan incorporates the values and goals contained within them.

PARK ECOSYSTEM AND USES ARE BALANCED

1. Balance the Park's unique rural character with wildlife, cultural and recreational uses.
2. Activate and interpret the Park to minimize impacts to natural areas while maximizing the potential of active and passive recreation zones.

PROTECT, CELEBRATE AND ACTIVATE

3. Bring natural and cultural heritage to life through active engagement, education and interpretation.
4. Protect the heritage values of historic assets while minimizing changes to the character and heritage defining elements.
5. Celebrate Terra Nova's significance as a key component of Richmond's Ecological Network, the Fraser River Estuary and the Pacific Flyway.

PROGRAM FOR CURRENT AND FUTURE GENERATIONS

6. Program sustainably to preserve the site for future generations.
7. Recognize the impact of climate change and adaptation when programming the site and its impacts to the site's ecology.
8. Support and enhance the site's role in addressing food security and local food production in Richmond.

The proposed Guiding Principles were developed based on the following inputs:

- Related City strategies and plans, including, but not limited to, the 2004 Terra Nova Concept Plan, the 2014 Terra Nova Conservation Review, the Parks and Open Space Strategy, Official Community Plan, Ecological Network Management Strategy, Cultural Harmony Plan, and Community Wellness Strategy;
- Background research including, but not limited to, the natural and cultural history of the site, precedent studies, infrastructure studies and environmental studies; and
- Input from community groups, key community partners (including those presently operating at Terra Nova) and a wide-range of City staff.

Community Partner Engagement

Strong relationships have been established with a number of community partners within the Site including The Sharing Farm Society, Urban Bounty and Thompson Community Association. These partners have effectively utilized available built facilities and outdoor spaces in order to provide valuable services and programs to the community.

All three community partners were provided with individual presentations on July 13, 2023, detailing the process staff employed to draft the Guiding Principles. Staff were provided feedback on the draft Guiding Principles, which were well received by the majority of those who attended the presentations. Their input was incorporated into the draft Guiding Principles presented in this report. See Attachment 2 for a detailed graphic summary of the community partners' feedback.

Preliminary Public Information and Awareness

Preliminary information to create awareness of the Program Plan was provided to the public on Sunday, August 20, 2023, taking advantage of the large number of visitors at the Sharing Farm's Richmond Garlic Festival.

Next Steps

Should Council endorse the Guiding Principles, the planning process will proceed to Phase 2 with public engagement and the development of the Program Plan concept options. Additional public engagement will be included as part of Phase 2 and will reach out to the broader community by a Let's Talk Richmond survey and a public open house proposed for November. Staff will report back to Council with the results of Phase 2, where staff will then seek endorsement to proceed to Phase 3 of the Program Plan.

Financial Impact

None.

Conclusion

Staff request Council's endorsement of the Terra Nova Rural Park Historical Assets Program Plan Guiding Principles. These Guiding Principles will serve as touchstones for staff to reference at key decision points involving design, programming and implementation decisions. The Guiding Principles will also inform staff on how to develop programming options for public consideration and feedback as staff advance the process to Phase 2 of the Program Plan.

Staff will provide Council periodic updates as the project proceeds through the remaining two Phases of the Program Plan process and will present the final Program Plan for Council endorsement upon completion.



Alexander Kurnicki
Manager, Parks Programs
(604-276-4099)

- Att. 1: Terra Nova Program Plan Site Map
2: Terra Nova Program Plan Summary of the Community Partner Engagement Results



**City of
Richmond**

Terra Nova Program Plan Site Map

Community Services Division



Terra Nova Rural Park, Richmond

Map Produced: 2023-08-16

Aerial Photograph: 2021

Locations are approximate

Legend

- ▬ Study Area
- ▬ Non-Heritage
- ▬ Heritage
- ▬ Ditches and Hedgerows

0 20 40 80 120 160 Meters



Terra Nova Program Plan Summary of the Community Partner Engagement Results









City of Richmond

Report to Committee

To: Parks, Recreation and Cultural Services Committee
Date: November 15, 2023

From: Marie Fenwick
Director, Arts, Culture and Heritage Services
File: 11-7000-09-20-089/Vol 01

Re: 2024 Engaging Artists in Community Program Public Art Projects

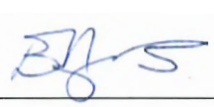

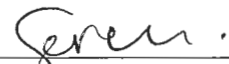
Staff Recommendation

That the 2024 Engaging Artists in Community Program Public Art Projects as presented in the staff report titled "2024 Engaging Artists in Community Program Public Art Projects", dated November 15, 2023, from the Director, Arts, Culture and Heritage Services, be approved for implementation once the Consolidated 5-Year Financial Plan (2024-2028) is adopted by Council.

CM Fenwick

Marie Fenwick
Director, Arts, Culture and Heritage Services
(604-276-4288)

Att. 3

REPORT CONCURRENCE		
ROUTED TO:	CONCURRENCE	CONCURRENCE OF GENERAL MANAGER
Finance Department	<input checked="" type="checkbox"/>	
Parks Services	<input checked="" type="checkbox"/>	
Engineering	<input checked="" type="checkbox"/>	
Sustainability & District Energy	<input checked="" type="checkbox"/>	
SENIOR STAFF REPORT REVIEW	INITIALS: 	APPROVED BY CAO 

Staff Report

Origin

Richmond's Engaging Artists in Community Public Art Program creates opportunities for collaborative art projects involving community associations, schools, non-profit organizations and professional artists of all disciplines.

This report recommends three artist proposals for community public art projects in partnership with Aspire Richmond and Richmond Public Library, Richmond School District No. 38, and Richmond Nature Park Society.

This report supports Council's Strategic Plan 2022-2026 Focus Area #6: A Vibrant, Resilient and Active Community:

Vibrant, resilient and active communities supported by a wide variety of opportunities to get involved, build relationships and access resources.

6.1 Advance a variety of program, services, and community amenities to support diverse needs and interests and activate the community.

6.3 Foster intercultural harmony, community belonging, and social connections.

This report supports the strategic directions of the Richmond Arts Strategy 2019-2024 to:

- *Ensure affordable and accessible arts for all.*
- *Promote inclusivity and diversity in the arts.*
- *Activate public spaces through (and for) the arts.*

This report supports the Richmond Community Wellness Strategy 2018-2023 and the action plan focus area #2 to:

- *Enhance physical and social connectedness within and among neighbourhoods and communities and provide opportunities to increase Richmond residents' sense of belonging to their neighbourhoods.*

Analysis

Background

The Engaging Artists in Community Public Art program invites professional artists to imagine innovative ways to engage culturally diverse seniors, adults, youth and children in the making of artwork to foster individual creative expression, multigenerational and cross-cultural exchange, and community building. From 2016 to 2023, 17 Engaging Artists in Community Public Art projects have been commissioned (Attachment 1).

In the summer of 2023, staff invited interested community partners to participate in the 2024 Engaging Artists in Community Program. The following organizations and City Departments provided an expression of interest to work with an artist this year:

- Richmond School District No. 38 / Dixon Elementary School in collaboration with the City's Flood Protection and Sustainability Programs;
- Richmond School District No. 38 / Maple Lane Elementary School;
- Richmond School District No. 38 / Tomsett Elementary School;
- Aspire Richmond in partnership with Richmond Public Library;
- The Arts Connection; and
- Richmond Nature Park Society.

Three locations and community partners were selected:

1. Aspire Richmond and Richmond Public Library;
2. Richmond School District No. 38 / Dixon Elementary School in collaboration with the City's Flood Protection and Sustainability Programs; and
3. Richmond Nature Park Society.

Terms of Reference and Artist Selection

The projects' Terms of Reference were developed in consultation with the selected partners. Profiles were included in the Artist Call to describe the three separate artist opportunities. This information assisted artists in choosing to apply for the opportunity that best matched their skill sets and interests (Attachment 2).

The Artist Call was issued on August 17, 2023 and closed on September 14, 2023. An extended deadline for the Dixon Elementary School artist opportunity was issued on September 18, 2023 and closed on October 3, 2023. Staff received a total of 26 artist applications for three artist opportunities. The selection process for each opportunity was implemented in accordance with the terms of the Public Art Program Policy Administrative Procedures. All artist proposals were evaluated on the basis of artistic merit, appropriateness to the goals of the Community Public Art Program, community organization objectives, artist qualifications, and project feasibility.

The following three artist proposals were presented to the Richmond Public Art Advisory Committee (RPAAC) on November 14, 2023. RPAAC supported all proposed projects with no feedback.

Aspire Richmond and Richmond Public Library Community Artist Project

The final artist selection meeting for the Aspire Richmond and Richmond Public Library artist opportunity took place on October 17, 2023. The selection panel included the following four members:

- Ginny Dunnill – Community Partner, Richmond Public Library;
- Jason Liu – Community Partner, Aspire Richmond;
- Nikhat Qureshi – Artist; and
- Shannon Fitzpatrick – Community Representative at Large.

Panel advisors included staff from the Public Art Program.

Richmond-based artist Keely O'Brien was recommended for this artist opportunity. Her proposed project will engage youth ages 13-19 years old who identify as neurodiverse or neurotypical (Neurodiversity is the range of differences in individual brain function and behavioural traits, seen as typical variations in the population). A variety of art activities will be led by the artist, including mixed-media drawing and painting, zine-making, printmaking and textile printmaking. The artist-led engagement sessions will take place at Aspire Richmond and Richmond Public Library Brighthouse Branch. The artist will be supported by Aspire Richmond youth counsellors and Richmond Public Library staff (Attachment 3).

Richmond School District No. 38 / Dixon Elementary School in collaboration with the City's Flood Protection and Sustainability Programs

The final artist selection meeting for the Dixon Elementary School artist opportunity took place on November 3, 2023. The selection panel included the following three members:

- Kirsten Wallace – Community Partner, Principal, Dixon Elementary;
- Nikhat Qureshi – Artist; and
- Shannon Fitzpatrick – Community Representative at Large.

Panel advisors included staff from Public Art Program. A member of the Richmond Public Art Advisory Committee attended as an observer.

Artist Andrea Hoff was recommended for this artist opportunity. The artist brings to the project an established practice in creating graphic novels and demonstrated experience working with young learners. Their project will include a range of art activities to engage young learners on the topic of flood protection and environmental protection, including drawing, painting, cyanotype photography, storytelling, poetry and animation. Through a process of working collaboratively with students, a final legacy art project and celebratory gathering will be completed and engage the larger neighbourhood and community. The artist will be supported by Dixon Elementary School teachers and a staff project liaison from Engineering and Public Works (Attachment 3).

Richmond Nature Park Community Artist Project

The artist selection meeting for the Richmond Nature Park Community Project took place on October 19, 2023. The selection panel included the following three members:

- James Greenhalgh – Community Partner, Richmond Nature Park Society;
- Nikhat Qureshi – Artist; and
- Shannon Fitzpatrick – Community Representative at Large.

Panel advisors included staff from Parks Services and Public Art Program. A member of the Richmond Public Art Advisory Committee attended as an observer.

Artist Desirée Patterson was recommended for this artist opportunity. Their professional practice incorporates photography and mixed-media printmaking techniques. The proposed project will use socially-engaged art activities (such as artist-led walks with a staff naturalist and multiple types of printmaking techniques) to educate participants and visitors about the life-cycle of the bog and seasonal changes in flora/fauna within the park. A final legacy art project and celebratory gathering will be completed and engage the community (Attachment 3).

Next Steps

Following Council endorsement of the artist proposals, staff will work with the artists and community partners to execute contracts and develop work plans. If approved, the projects will move into the development phase with implementation completed by December 2024.

Financial Impact

The Engaging Artists in Community Public Art Program budget is \$36,000 and is funded by voluntary developer contributions to the Public Art Program Reserve Fund. Each community art project will be allocated \$12,000. Richmond School District No. 38 is contributing an additional \$2,000 for the project with Dixon Elementary School in collaboration with the City's Flood Protection and Sustainability Programs.

The budget is included in the City's proposed 2024 Public Art Program operating budget as part of the 2024 budget process and will be implemented once the proposed Consolidated 5-Year Financial Plan (2024-2028) is adopted by Council.

Any maintenance and repairs required for any legacy artworks will be the responsibility of the Public Art Program as part of the annual operating budget, unless otherwise negotiated with the project partners.

Conclusion

This year's Engaging Artists in Community Public Art Program creates opportunities to support a diverse group of artists and artist practices in socially engaged arts. The topics for each artist project focuses on environmental conservation, flood protection and youth development. The

November 15, 2023

- 6 -

proposed projects promote the building of inclusive communities and equitable opportunities for people of all ages to access and participate in the arts.



Biliana Velkova
Public Art Planner
(604-247-4612)

- Att. 1: 2016-2023 Engaging Artists in Community Public Art Program Projects
2: 2024 Engaging Artists in Community Program, Artist Call Terms of Reference
3: 2024 Project Proposals

2016-2023 Engaging Artists in Community Public Art Program Projects

Between 2016 - 2023, the following artist projects have been completed as part of the Engaging Artists in Community Program:

- ***Harvest Full Moon Project***, activities, procession, celebration at City Centre Community Centre
- ***spART*** project, physical and visual art activities at Thompson Community Centre
- ***Minoru Seniors Legacy Stories***, digital stories and online legacy project at Minoru Place Activity Centre
- ***Great Blue Heron***, visual art activities and sculpture at McLean Park
- ***Tide Water Tales*** storytelling, community performances at Britannia Shipyards National Historic Site
- ***FANFARE***, community engagement sessions and murals at Minoru Arenas
- **Musqueam Artist Workshops** at Richmond Public Library (Brighthouse Branch)
- ***The Interpreter Project***, storytelling and visual art activities at Richmond Nature Park
- ***Minoru Manifesto*** performance, storytelling, visual art activities and installation at Minoru Chapel and City Centre Community Centre
- ***Victory Gardens for Diversity***, outdoor artist walks and visual art activities at Terra Nova Rural Park
- ***A mid-way point: the present is an infinite moment*** community engaged mural project at Thompson Community Centre
- ***Art Cultivation From Nature***, printmaking activities at Paulik Neighbourhood Park
- ***Walk. Listen. Record.***, outdoor artist walks, digital oral and video-based storytelling at various Richmond Parks and Trails
- ***Wayfinding Art Studio***, storytelling, visual art activities at Brighthouse Park Pavilion
- ***Creative Community Resilience***, puppetry, storytelling and visual art activities at Ferris Elementary School
- ***Garden Time***, photography, printmaking art activities at Terra Nova Rural Park and the Sharing Farm
- ***Weaving Lives Together***, printmaking and paper weaving art activities at Tait Riverfront Community Park

call to artists



Garden Time, Aaron Friend Lettner, collaboration w/ Terra Nova Nature School / Sharing Farm, 2023

Engaging Artists in Community Program

Request for Proposals (RFP)

August 2023

The City of Richmond Public Art Program seeks artists with socially-oriented and civic-minded practices for three unique community-engaged artist opportunities in 2024. Professional artists are invited to imagine innovative ways in which art can act as a catalyst to foster individual creative expression, build community and address topics of relevance working within communities.

Opportunity A: \$12,000 | Aspire Richmond / Richmond Public Library

Opportunity B: \$14,000 | Dixon Elementary / CoR Engineering

Opportunity C: \$12,000 | Richmond Nature Park Society

Eligibility: Artists residing in British Columbia

Deadline: September 14, 2023

Duration: January – December 2024

call to artists

PUBLIC ART
RICHMOND

BACKGROUND

The Engaging Artists in Community (EAC) Program supports artists with socially-oriented practices and encourages the development of a wide variety of collaborative practices. Community-based artworks can express a shared goal or theme and/or provoke dialogue on ideas related to cultural identity, social history or the environment. Artist projects can leave a physical or social legacy for the community and/or may include a community event to present the final work.

Projects will engage participants by providing them with a greater sense of self, identity, community and place through learning and experience of art-making experiences. The work must be accessible and appeal to a diverse and local audience. Artists will also demonstrate the capacity to undertake and complete their proposed work within an approved timeframe.

PREVIOUS EAC PROJECTS

Applicants are encouraged to view previously commissioned projects here: www.richmond.ca/culture/PublicArt/WhatsNew/EngageArtists

ARTIST ELIGIBILITY

Open to professional artists and artist teams residing in British Columbia. City of Richmond employees, Richmond Public Art Advisory Committee members and artists who are currently contracted by the Richmond Public Art Program are not eligible to apply.

SELECTION PROCESS

Selection panels consisting of a combination of artists, art professionals and community representatives will convene for each of the three opportunities. The selection panels will engage in a two-stage selection process to review all artist submissions. During the second stage, shortlisted artists or artist teams will be invited to an interview with the selection panels and will receive a \$250 honorarium. At the conclusion of the process, the panels will recommend one artist or artist team for each opportunity. Subject to approval by Council, the artist or artist team will be required to enter into a contract with the City of Richmond.

call to artists

PUBLIC ART
RICHMOND

ARTIST SELECTION CRITERIA

- Artistic merit and clarity of the artist's Statement of Interest in response to the Partner Profile goals and objectives. The proposal should demonstrate artistic quality, innovation and creativity.
- Demonstration of artistic quality, innovation and creativity in applicant's previous work and experience.
- Community impact of work to connect diverse and multi-generational audiences with artists in creative dialogue, participation and awareness.
- Artist's capacity to work with community members, other design professionals and project stakeholders.
- Appropriateness of the proposal to the Public Art Program Policy goals: www.richmond.ca/culture/publicart/policy

SUBMISSION REQUIREMENTS

Email all documentation as one (1) PDF document, not to exceed a file size of 5 MB to: PublicArt@richmond.ca

- **INFORMATION FORM:** Please complete the information form attached to the end of this document.
- **STATEMENT OF INTENT:** One page maximum, describing proposed approach to the work, relevant experience and skillsets, and how the proposal responds to the specific aims of the project opportunity.
- **ARTIST CV:** One page maximum. Teams should include one page for each member.
- **WORK SAMPLES:** Up to ten (10) examples of previous work. Please include artist name(s), title, year, location and medium information as captions on the bottom of each image page. If submitting digital video, please include link to YouTube, Vimeo or similar online platform. **Please do not submit digital video files.**
- **REFERENCES:** Three references who can speak to your abilities and accomplishments. Only provide contact name, title, phone number and e-mail. References will only be contacted if applicant is shortlisted.

ACCESSIBILITY SUPPORT

The City of Richmond strives to create artist opportunities that are inclusive and accessible to individuals of all abilities. If you are living with a disability and require assistance in completing the written application, please contact PublicArt@richmond.ca or Tel: 604-204-8671.

call to artists

PUBLIC ART
RICHMOND

SUBMISSION GUIDELINES

1. All supporting documents must be complete and strictly adhere to these guidelines and submission requirements (above) or risk not being considered.
2. All submissions must be formatted to 8.5 x 11 inch pages. Support images and concept sketches are best formatted to landscape format.
3. Artist submission PDF file must be 5 MB or smaller.
4. If submitting as a team, the team should designate one representative to complete the entry form. Each team member must submit an individual resume/curriculum vitae.
5. All documents must be sent by email to: PublicArt@richmond.ca. Please include name and project when naming your file, e.g. Jane_Smith_EngagingArtistsCommunity_RFP

ADDITIONAL INFORMATION

1. The selected artist may be required to show proof of WCB coverage and up to \$5,000,000 general liability insurance.
2. Please be advised that all commissioned artists from this program will be required to complete Police Information Checks with the Richmond RCMP.
3. Please be advised that the City and the selection panel are not obligated to accept any of the submissions and may reject all submissions. The City reserves the right to reissue the Artist Call as required.
4. All submissions to this Artist Call become the property of the City. All information provided under the submission is subject to the Freedom of Information and Protection of Privacy Act (BC) and shall only be withheld from release if an exemption from release is permitted by the Act. The artist shall retain copyright in the concept proposal. While every precaution will be taken to prevent the loss or damage of submissions, the City and its agents shall not be liable for any loss or damage, however caused.
5. Extensions to this deadline will not be granted under any circumstances. Submissions received after the deadline and those that are found to be incomplete will not be reviewed.

QUESTIONS

Please contact the Richmond Public Art Program:

Tel: 604-204-8671

Email: PublicArt@richmond.ca

call to artists

PUBLIC ART
RICHMOND



COMMUNITY PARTNER PROFILE

**Aspire Richmond /
Richmond Public
Library**



Artist Opportunity

COMMUNITY PARTNERS

Aspire Richmond's Youth Connections Program is an out-of-school program designed for young people with developmental disabilities. Youth Connections operates after school on weekdays during the school year and for full days during spring, summer and winter breaks. The program offers school-aged children and teens the opportunity for interaction and recreation in a fun and safe environment.

Richmond Public Library has been proudly serving the Richmond community since 1976 as an essential source of information and learning. Our mission is to create opportunities to learn, connect and belong and our vision is to inspire curiosity, transform lives and empower everyone. Guided by our Strategic Plan, the library is focused on building and growing the community, communicating who we are and what we do; developing and leveraging our resources; expanding access to programs, services and collections; and reimagining space for our community to use.

call to artists

ARTIST OPPORTUNITY

Artists or artist teams with socially-engaged, multidisciplinary and/or interdisciplinary artist practices in visual arts (including but not limited to painting, drawing, printmaking, photography, sculpture, video/sound media arts, ephemeral arts, storytelling and/or performance/dramatic arts are invited to submit a proposal for this opportunity.

The commissioned artist or artist team will work collaboratively with Aspire Richmond youth (12 to 19 years old), and youth from the larger Richmond community to explore the topic of self-identity and self-awareness. Self-identity forms the basis of our self-esteem; as youth move into adulthood, it is important for them to learn who they are in the world. The commissioned artist project will offer youth an opportunity to explore their emerging identities through individual and collective creative expressions. The following questions may be explored in the artist project:

- *What are creative ways to engage youth that honour neurodiversity and can create safe and inclusive spaces for all forms of creative expression?*
- *How do we use art to honour the differences and similarities among us?*

A final legacy project should emerge from the youth engagement work and incorporate participant contribution however possible.

The commissioned artist will be supported by Aspire Richmond Youth Recreation Counselors and a staff representative from the Richmond Public Library, who will support with registration, logistics and day-of presentation. Additional resources available to the artist include:

- indoor/outdoor gathering spaces;
- temporary storage space for artist materials and equipment;
- basic office supplies, including photocopying and printing services; and
- digitization stations, Cricut Maker 3, 3D printers, musical instruments, podcasting equipment, laptops and printers.

ARTIST SCOPE OF WORK

The commissioned artist will complete a minimum of 250 hours. This will include research, administration, preparation work, public engagement, production and presentation of a final legacy work.

The commissioned artist will take part in an introductory orientation session with Aspire Richmond to support them in working with youth who live with developmental disabilities.

The commissioned artist will participate and present work for Richmond Culture Days in September-October 2024.

Neurodiversity is the range of differences in individual brain function and behavioral traits, seen as typical variations in the population.

call to artists

The artist will create and maintain an artist blog website to communicate and document the process and work created during the artist project.

AIMS AND OBJECTIVES:

- to create a collaborative and community-based creative expression that encourages dialogue and exploration of self-identity and self-awareness;
- to use creative forms of expression as a catalyst to connect with diverse youth; and
- to create opportunities for youth to learn, connect and build community.

LOCATION

The commissioned artist or artist team will work from the Richmond Public Library Brighthouse Branch, 7700 Minoru Gate; Aspire Richmond, 7000 Minoru Blvd.; and/or the Seedlings Early Development Hub, 6380 No.3 Road

Please refer to Figures 1 to 6 for additional photos of activity spaces and off-site locations available to the artist for indoor/outdoor project activation.

BUDGET

The project budget for this opportunity is \$12,000 CAD and is inclusive of community engagement work, production/material expenses, administration, artist fees, photography documentation, artist insurance and applicable taxes, excluding GST.

ADDITIONAL RESOURCES

- Aspire Richmond | [AspireRichmond.com](https://aspire-richmond.com)
- [Aspire Richmond Strategic Plan](#)
- Richmond Public Library | [YourLibrary.ca](https://yourlibrary.ca)
- Richmond Public Library | [2019-2021 Strategic Plan](#)
- Richmond Public Library | [Annual Report](#)
- City of Richmond Public Art Program | [Engaging Artists in Community](#)

PROJECT TIMELINE

Deadline to Apply:	September 14, 2023
Finalist Notifications:	September 2023
2nd Stage Interviews*:	October 17, 2023, 5:00-7:00 p.m.
Project Start:	January 2024
Completion:	December 2024

*Artists applying for this opportunity are kindly asked to ensure they will be available to attend the second stage interview date and time.

call to artists

PUBLIC ART
RICHMOND



Figure 1. Brighthouse Library Launchpad Flex Space & Classroom

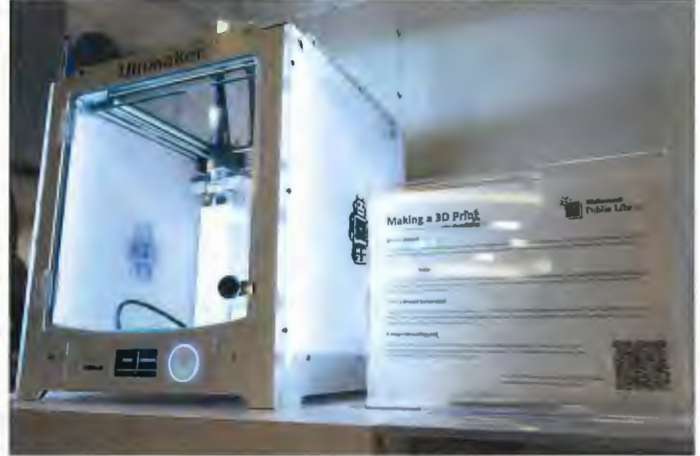


Figure 2. 3D Printers



Figure 3. Brighthouse Library Outdoor Spaces – Minoru Park



Figure 4. Seedlings Multi-Purpose Room



Figure 5. Youth Connections Outside Space



Figure 6. Seedlings Multi-Purpose Room

PRCS - 47

call to artists



Figure 1. Horseshoe Slough Pump Station, City of Richmond

COMMUNITY PARTNER PROFILE

**Dixon Elementary
School / Richmond
Engineering &
Public Works**

**Artist
Opportunity**

COMMUNITY PARTNER

The Richmond School District's mission is to cultivate a safe, accepting and engaged community that inspires a passion for lifelong learning. The values that guide their work and to achieve their vision and mission are: collaboration, creativity, curiosity, resilience, respect and equity for all.

Arts education plays a key role in the development of social-emotional competencies that enable young people to interact productively with others, build and express a healthy sense of self and community, and work effectively toward their goals. Art is valuable because it allows young learners to process their world and engage in critical sensory input.

A.B. Dixon Elementary School is located at 9331 Diamond Road in West Richmond. The school comprises 340 learners, 40 staff, and a proactive Parent Advisory Committee (PAC) that works towards supporting students. The school offers two programs: the Neighbourhood Program draws students from the direct neighbourhood and the District Program Option Early French Immersion Program draws from greater Richmond. Their focus is to support all learners to identify a sense of connection, belonging and positive personal and cultural identity within the Dixon community.

The school's outdoor amenity spaces include an outdoor learning space with a school community gathering area, outdoor shed and raised garden beds. Many classes embed outdoor learning along the West Dyke Trail, a ten-minute walk away.

call to artists

PUBLIC ART
RICHMOND

RICHMOND ENGINEERING SUSTAINABILITY

The City of Richmond is comprised of islands within the floodplain of the Fraser River, where the river flows into the Salish Sea. At an average of one metre (three feet) above sea level, Richmond faces flood hazards from coastal storm surges, snowmelt flooding and extreme weather events, making flood protection incredibly important.

To ensure Richmond remains safe, the City has one of the most comprehensive flood protection systems in British Columbia. The City's Engineering and Public Works service teams maintain and monitor the following flood protection infrastructure:

- Dikes: 49 km of dikes that hold back the waters of the sea and river
- Drainage pipes: 595 km of drainage pipes that transport water out of the city
- Culverts: 61 km of culverts and tunnels that carry streams and store rainwater
- Channelized watercourses: 155 km of built channels that move water through and out of the city
- Pumps: 39 drainage pump stations that pump rain and groundwater out of the city
- Sensors: Numerous flood protection sensors that provide real-time data on river levels, rainfall and stormwater drainage.

The Engineering department includes sustainability staff who are consulted on all city flood protection planning, construction or maintenance. These staff are responsible for protecting native plant and animal species and the ecosystems in which they live.

ARTIST OPPORTUNITY

Artists or artist teams with socially-engaged, multidisciplinary art practices in environmental art, performance arts, storytelling, music production, digital media arts (to name a few) are invited to submit an expression of interest for this artist opportunity.

The commissioned project will engage about 60–80 learners, 8–11 years old in grades 4 to 6. The artist will engage three classes, individually or as one group depending on the preference of the commissioned artist.

call to artists

In partnership with the City of Richmond Engineering and Public Works Department, the commissioned artist will engage young learners on the topic of flood protection. The commissioned artist may wish to explore the following question within the artist project:

During a time of climate change and sea-level rise, how can art explore awareness, knowledge sharing and adaptation when planning for flood protection?

The commissioned artist will be supported by City staff, teachers and educational leaders and will have access to:

- indoor and outdoor learning environments such as multipurpose classrooms, outdoor learning space, school yards, sport fields and the West Dyke Trail;
- general office supplies including, photocopying and printing services;
- a storage area for temporary storage of artist materials and equipment;
- if required, a work space within the school with access to WIFI; and
- Richmond Engineering and Sustainability staff, who are subject matter experts about the City's flood protection infrastructure and natural habitat enhancements or upgrades.

ARTIST SCOPE OF WORK

The commissioned artist or artist team will complete a minimum of 250 hours. This will include research, administration, preparation work, public engagement, creation, production and presentation work resulting in a final legacy work to be installed and/or presented at Dixon Elementary school. A final celebratory event will engage the larger community.

The implementation, delivery, format and structure of the engagement sessions with young learners can be coordinated working with supporting project teachers at Dixon Elementary School.

The expectation is for the commissioned artist or artist team to create and produce individual and collaborative creative expressions that will result in a final legacy work.

The commissioned artist/artist team will also create and maintain a project website blog to document the project.

Note: the commissioned artist must successfully complete Police Information Checks with the Richmond School Board and City of Richmond, prior to project implementation.

call to artists

PUBLIC ART
RICHMOND

AIMS AND OBJECTIVES:

- to lead a place-based art experience with culturally diverse students on the topic and theme of flood protection and climate change;
- to encourage and offer learners an opportunity to express their voice, feelings, and emotions, while inspiring hope and a sense of agency for the future; and
- to create a legacy artwork that encapsulates the collaborative process of creating and learning between the commissioned artist, young learners, and the larger community.

LOCATION

The commissioned artist or artist team will work indoors and outdoors at Dixon Elementary, 9331 Diamond Rd. Off-site activation or fieldwork along the West Dyke Trail may also be possible.

Please refer to Figures 2 to 4 for additional photos of activity spaces and off-site locations available to the artist for indoor/outdoor project activation.

BUDGET

The project budget for this opportunity is \$14,000 CAD and is inclusive of community engagement work, art materials for engagement activities, administration, artist fees, photography documentation, artist insurance and applicable taxes, excluding GST.

Subject to the nature of the artist project and availability, additional in-kind materials and resources for implementation, installation or presentation of the project may be available and contributed by Dixon Elementary/Richmond School District and/or Richmond's Engineering and Public Works Department.

ADDITIONAL RESOURCES

- Richmond School District | sd38.bc.ca
- Dixon Elementary | dixon.sd38.bc.ca
- City of Richmond Public Art Program | www.richmond.ca/culture/PublicArt/WhatsNew/EngageArtists
- Richmond's Engineering and Public Works Department | www.richmond.ca/services/water-sewer-flood/dikes

call to artists

PUBLIC ART
RICHMOND

PROJECT TIMELINE

The selected artist must complete all work by June 2024.

Deadline to Apply:	September 14, 2023
Finalist Notifications:	September 2023
2nd Stage Interviews*:	October, 18, 2023, 5:00-7:00 p.m.
Project Start:	January 2024
Completion:	June 2024

*Artists applying for this opportunity are kindly asked to ensure they will be available for the second stage interview dates/times.

call to artists

PUBLIC ART
RICHMOND

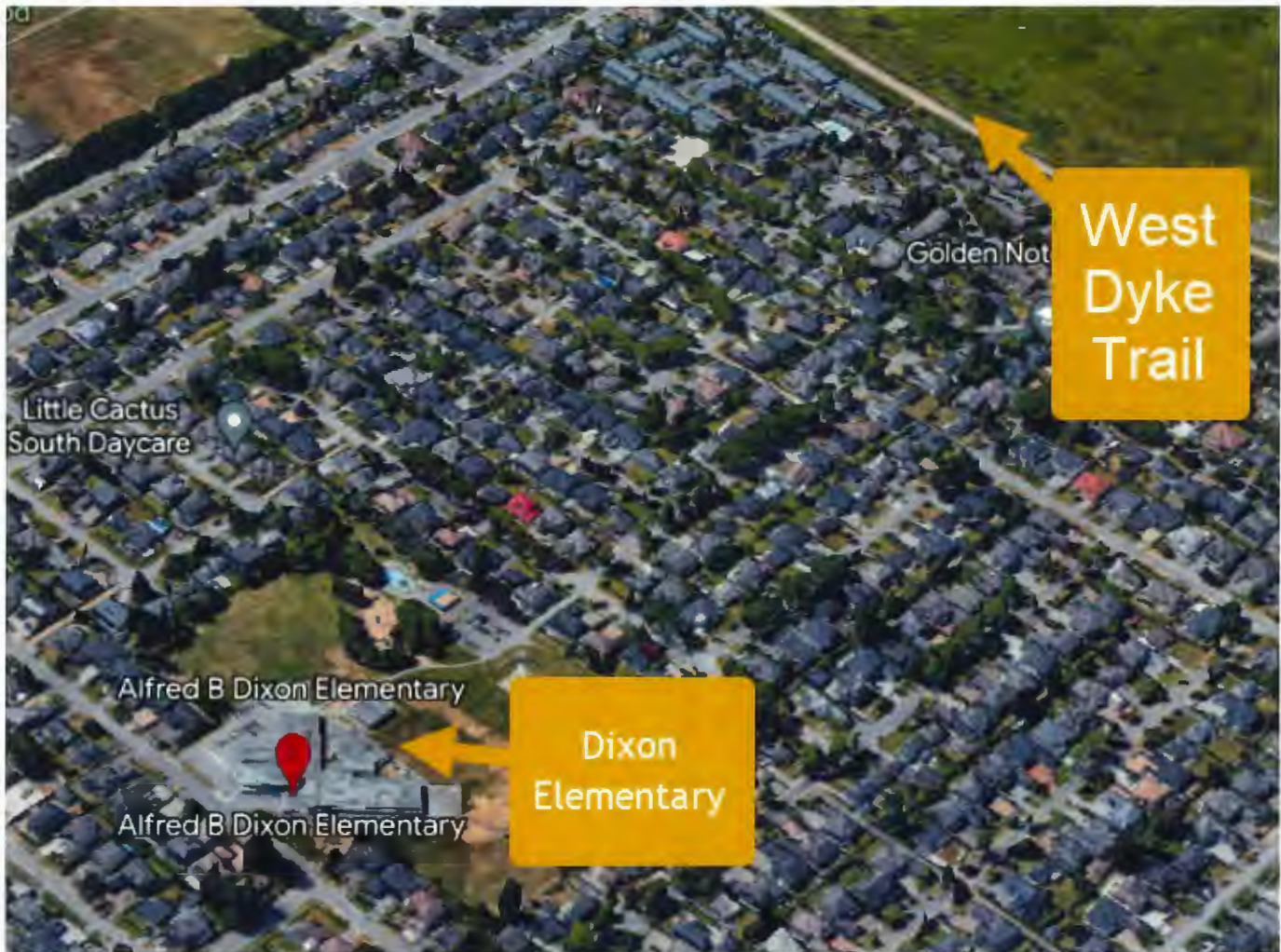


Figure 2. Aerial location map showing Dixon Elementary and proximity to the West Dyke Trail



Figure 3. Dixon Elementary open green field



Figure 4. Off-site outdoor learning along the West Dyke Trail

call to artists



Figure 1. Nature House Interpretative Centre, Richmond Nature Park.

COMMUNITY PARTNER PROFILE

Richmond Nature Park

Artist Opportunity

COMMUNITY PARTNER

The Richmond Nature Park Society is a non-profit organization aimed at promoting natural history and natural history education in Richmond. The Society works in partnership with the City of Richmond Parks Services Department to provide natural history education opportunities that encourage residents and visitors to learn about the environment and natural history of this community. Through a formal partnership agreement with the City, the Nature Park Society provides governance, determines programs, sets policy, fundraises for programming and exhibits, hires programming staff and advocates on behalf of the Richmond Nature Park. Through our partnership agreement, City staff assist the Society in its mandate by facilitating programs and activities.

City of Richmond Parks Services Department is renowned for its high quality parks, trails, natural areas and its vibrant urban realm. Preservation of wildlife habitat, the natural environment, and our natural and cultural heritage are cornerstones of parks and trails strategies. The department provides pathways and amenities within our urban settings that link people to each other, their community and their natural environment while fostering healthy active lifestyles.

call to artists

PUBLIC ART
RICHMOND

Parks Programs, a division of Parks Services, is focused on public programs that engage individuals and community groups in the activation of parks and open spaces, encourage ecological stewardship and education, support urban wildlife management, and support capacity development of our local community partners in the advancement of these objectives. The portfolio spans a broad and diverse range of activities, such as coordinating community and special events, fostering urban agriculture initiatives such as community gardens, administering grant programs, offering environmental stewardship opportunities such as the Partners for Beautification program, and invasive plant removals and tree planting events.

RICHMOND NATURE PARK

The Richmond Nature Park is located at 11851 Westminster Highway and consists of 200 acres of raised peat bog habitat that once covered large portions of the geographical land area now known as Richmond. Four walking trails totalling 5 kilometres provide visitors the chance to encounter plants and animals in bog, forest and pond habitats. The shortest trail, an elevated boardwalk around the park pond, is wheelchair accessible. All other trails are soft-surfaced with wood chips and are well-marked. The Nature Park offers a variety of School and Home Learners Programs in addition to public recreation programs.

The Nature House is an interpretive centre located at the entrance to the park and features interactive displays and games about the park, the bog and other aspects of nature. There are activity kits, an active beehive, a small collection of live animals and a gift shop.

The park is always changing. In spring, visitors can see and hear the territorial fights of hummingbirds as bog flowers bloom below. Summer days are long and the trails are ideal for an evening stroll. Autumn brings owls, northern migratory birds and spectacularly coloured foliage. In winter, visitors can hear varied thrushes and see winter birds at the feeders or follow animal tracks in the snow.

ARTIST OPPORTUNITY

Artists or artist teams with socially-engaged, multidisciplinary and/or interdisciplinary artist practices in visual and performing arts (including but not limited to) storytelling, performance-based art forms, walking practices, sound-based practices, environmental art, therapeutic and installation art, sculpture, digital mixed-media installations and photography are invited to submit a proposal for this opportunity.

The commissioned artist or artist team will use art as a catalyst to connect new and long-time users of the park with Richmond's natural heritage, including native plant and animal species. The artist will engage a culturally diverse and multigenerational audience.

call to artists

The artist-led place-based creative experience will focus on the activation of the park, using natural materials in the creation of artwork.

Artists will be supported by Richmond Nature Park staff and volunteers, and have access to:

- the pavilion space and other park spaces and features for hands-on art making and community engagement work;
- an on-site secure storage area;
- general office supplies, including photocopying and printing equipment;
- office meeting/work space, if required;
- on-site naturalist with specialized knowledge of the park's natural features, including plant and wildlife species; and
- Nature House library exhibit pieces and artifacts.

ARTIST SCOPE OF WORK

The artist or artist team will complete a minimum of 250 hours. This will include research, administration, preparation work, public engagement, production and presentation work.

The commissioned artist will present a final celebratory project event in the fall of 2024 and may be coordinated as part of other fall events. Examples of events that have taken place in the fall include:

- Halloween Hoot
- World Migratory Bird Day
- BC Rivers Day

The commissioned artist will have the option to display project work at the Nature House interpretive centre or within the Richmond Nature Park

The artist or artist team will also create and maintain a project artist blog to communicate and document the process and work created during the artist project.

PROJECT AIMS AND OBJECTIVES:

- to engage an artist/artist team with an interest in working with natural materials and the unique ecological features of the Park;
- to support artistic projects which foster a sense of environmental awareness, heritage and advocacy through creativity and self-expression;
- to use socially-engaged art as a catalyst to connect with a culturally diverse and multigenerational community; and
- to create opportunities for individual creative expression and to build a shared sense of community.

call to artists

LOCATION

The commissioned artist or artist team will be based at the Richmond Nature Park, 11851 Westminster Hwy.

Please refer to Figures 1 to 7 for additional photos of activity spaces and locations available to the artist for indoor/outdoor project activation.

BUDGET

The project budget for this opportunity is \$12,000 CAD and is inclusive of community engagement work, art materials for engagement activities, administration, artist fees, photography documentation, artist insurance and applicable taxes, excluding GST.

Subject to the nature of the artist project and availability, additional in-kind materials and resources for implementation, installation or presentation of the project may be available and contributed by the Richmond Nature Park Society and/or City of Richmond Parks Services.

ADDITIONAL RESOURCES

- Richmond Nature Park Society | <https://www.richmond.ca/parks-recreation/parks/aboutrnp.htm>
- City of Richmond Public Art Program | www.richmond.ca/culture/PublicArt/WhatsNew/EngageArtists
- Richmond Nature Park Society Facebook | <https://www.facebook.com/RichmondNatureParkSociety>

PROJECT TIMELINE

The selected artist must complete all work by fall 2024

Deadline to Apply:	September 14, 2023
Finalist Notifications:	September 2023
Stage 2 Interview:	October 19, 2023, 5:00-7:00 p.m.*
Project Start:	Winter 2024
Completion:	Fall 2024

*Artists applying for this opportunity are kindly asked to ensure they are available to attend the second stage interview date and time.

call to artists



Figure 2. Boardwalk trails in the park



Figure 3. Richmond Nature Park children's play area



Figure 4. Information Kiosk



Figure 5. Picnic Shelter in the Wildlife Garden



Figure 6. Trail in the winter



Figure 7. Boardwalk breakout spaces and seating areas

call to artists



Attach one (1) copy of this form as the first page of the submission.

Please indicate which opportunity you are applying for:

☐ Richmond Public Library / Aspire ☐ Dixon Elementary ☐ Richmond Nature Park

Name: _____

Address: _____

City: _____ Postal Code: _____

Primary Phone: _____ Secondary Phone: _____

E-mail: _____ Website: _____
(One website or blog only)

Incomplete submissions will not be accepted. Emailed submissions over 5 MB will not be accepted. Information beyond what is listed in the checklist will not be reviewed.

Optional: Do you self-identify as a member of an equity-seeking and/or underrepresented community?

(examples: Indigenous, person of colour, LGBTQ2S+, mixed ability, newcomer, Deaf, hard of hearing, living with a disability, etc.) If so, please specify:

If applicable, please indicate additional members of your artist team:

Please let us know how you found out about this opportunity:

Would you like to receive direct e-mails from the Richmond Public Art Program? ☐ Yes ☐ No

Signature: _____ **Date:** _____

Submit applications by email to: PublicArt@richmond.ca

Additional Information

Please be advised that the City and the selection panel are not obliged to accept any of the submissions and may reject all submissions. The City reserves the right to reissue the EOI as required. All submissions to this EOI become the property of the City. All information provided under the submission is subject to the Freedom of Information and Protection of Privacy Act (BC) and shall only be withheld from release if an exemption from release is permitted by the Act. The artist shall retain copyright of the submitted documents. While every precaution will be taken to prevent the loss or damage of submissions, the City and its agents shall not be liable for any loss or damage, however caused.

2024 Project Proposals

Aspire Richmond / Richmond Public Library Public Art Project

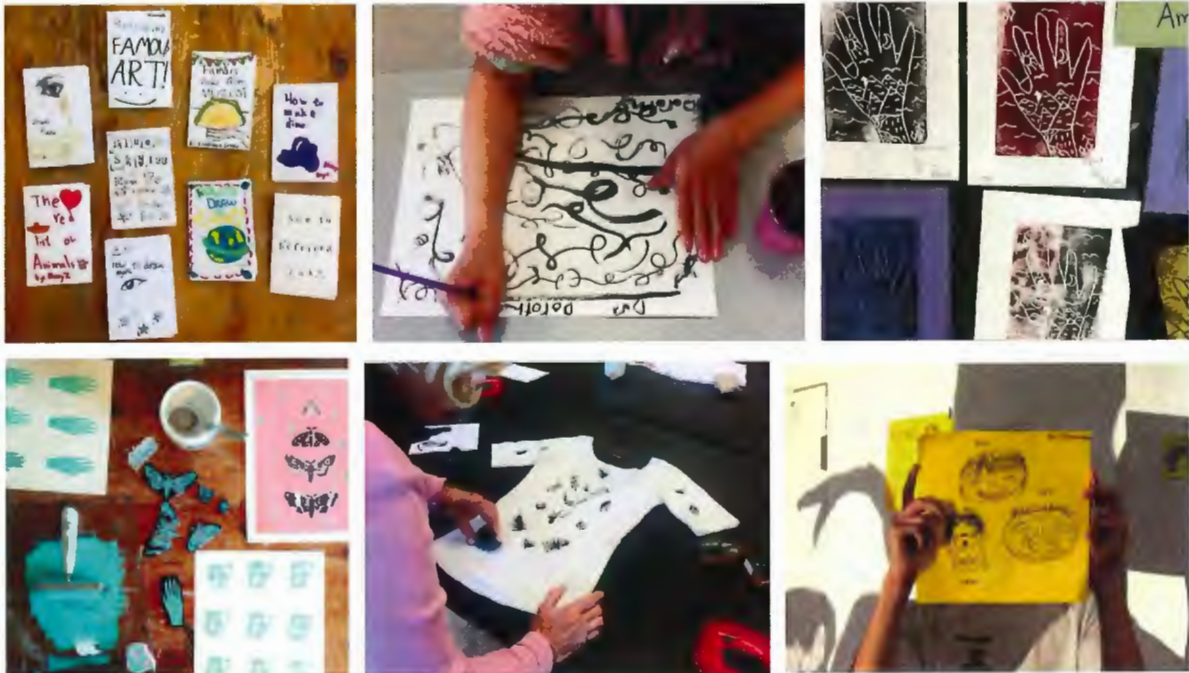
by artist Keely O'Brien

This community-engaged project will provide opportunities for neurodiverse and neurotypical youth, age 13-19 years to explore topics of self-identity and self-awareness.

Keely O'Brien is an interdisciplinary artist based in Richmond. As a community-engaged artist and arts educator, Keely creates and facilitates participatory and collaborative artwork with community members and organizations. The artist's work is site-responsive and is engaged with questions of place, home and belonging. As the Co-Artistic Director of the experimental theatre company, Popcorn Galaxies, her practice also includes puppetry, immersive installations, imaginative ephemera and interactive experiences.

The artist's proposed project will focus on *Creation, Collaboration and Exchange* as an approach and method of celebrating differences and similarities among youth (ages 13-19) who self-identify as neurodiverse or neurotypical. The artist will use a variety of arts-based activities, including drawing, zine-making, mixed-media textile printing and storytelling to engage youth in topics of self-identity and self-awareness.

Examples of proposed art activities:



From left to right: zine-making, painting, printmaking, mixed-media printmaking, textile printmaking and drawing.

***Hidden Stories of the Bioverse* | Richmond School District No. 38 | Dixon Elementary School in collaboration with the City's Flood Protection and Sustainability Programs**

by artist Andrea Hoff

This project will engage young learners in the topic of flood protection through the creation of a multi-authored graphic novel.

Andrea Hoff is a Vancouver-based artist, writer and graphic novelist whose work is interdisciplinary, involving the use of multiple media and a variety of methodological approaches. As a disabled artist with an invisible disability, her art is also understood as a sense-making practice to organize thoughts and to understand experiences. Andrea has a Masters in Fine Arts in Creative Writing from the University of British Columbia (2015) and a Bachelor of Fine Arts in Visual Art (Honours with Distinction) from the University of Victoria (1999).

Hidden Stories of the Bioverse will involve a range of art activities to engage young learners in the topics of flood protection and environmental awareness. The project will include artist-led field trips to the West Dyke Trail and Williams Road Pump Station in collaboration with Richmond Engineering. The art activities will include drawing, painting, cyanotype photography, storytelling, poetry and animation. Through a process of working collaboratively with the students, a final legacy art work in the form of a multi-authored graphic novel and celebratory gathering will be completed and engage the larger neighbourhood and community.

Examples of proposed art activities:



From left to right: cyanotype photography and poetry, examples of graphic novel illustrations and layouts, mixed media digital collage, example drawing/painting illustration with storytelling

***Visions of Biophilia* | Richmond Nature Park**

by artist Desirée Patterson

This community-engaged project will provide opportunities to learn about the life-cycle of the peat bog and the seasonal changes of the park's flora/fauna through guided walks, photography and printmaking activities.

Desirée Patterson is a Vancouver-based visual artist with a practice in lens-based and traditional media whose community engaged projects aim to foster place-based experiences with nature and promote environmental stewardship and conservation. Desirée has facilitated several community-engaged projects over the past five years, including a three-month elementary school art project with 52 students with the Vancouver School Board (2019) and a series of programs working with artists with developmental disabilities at the Alternatives Gallery & Studio in East Vancouver (2021).

Visions of Biophilia is a multifaceted socially engaged artist project that will involve photography and photo-based printmaking techniques, guided walks and hands-on art activities to provide visitors and project participants with opportunities to connect and learn about the park's unique ecosystem. In consultation with City staff and the Richmond Nature Park Society, a legacy artwork will be produced and installed in the park. A final celebratory exhibition and gathering will be scheduled in fall 2024.

Examples of proposed art activities:



From left to right: anothotype printmaking, photography using creative aperture control, chlorophyll leaf prints, cyanotype printmaking and digital collage.