



# City of Richmond

## Report to Committee

**To:** Parks, Recreation and Cultural Services  
Committee

**Date:** November 8, 2016

**From:** Mike Redpath  
Senior Manager, Parks

**File:** 11-7200-01/2016-Vol 01

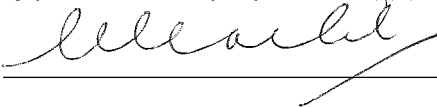

**Re:** Richmond School Board – School Closure Process

### Staff Recommendation

That a letter be sent to the British Columbia Premier, the British Columbia Minister of Education, and the Richmond Members of the Legislative Assembly, in support of School District No. 38 (Richmond)'s request for seismic remediation funding for all schools in Richmond in need of seismic upgrades to ensure the long-term safety of students and school staff, as detailed in the staff report titled "Richmond School Board – School Closure Process," dated November 8, 2016, from the Senior Manager, Parks.

Mike Redpath  
Senior Manager, Parks  
(604-247-4942)

Att. 4

REPORT CONCURRENCE	
CONCURRENCE OF GENERAL MANAGER 	
REVIEWED BY STAFF REPORT / AGENDA REVIEW SUBCOMMITTEE	INITIALS: DW
APPROVED BY CAO 	

## Staff Report

### Origin

At the October 11, 2016, Special General Purposes Committee meeting, staff received the following referral:

*That the matter of the Richmond School Board – School Closures be referred to staff for comments, analysis, and report back as appropriate.*

Shortly thereafter, the City received a letter dated October 24, 2016, (Attachment 1) from Debbie Tablotney, Chairperson of the Board of Education of School District No. 38 (Richmond) (SD38), requesting support from City Council in its appeal to the British Columbia Ministry of Education for seismic remediation funding for all schools in Richmond.

The purpose of this report is, in response to the aforementioned referral and letter, to present an update on the SD38 school closure process and to respond to SD38's request for support.

This report supports Council's 2014-2018 Term Goal #2 A Vibrant, Active and Connected City:

*Continue the development and implementation of an excellent and accessible system of programs, services, and public spaces that reflect Richmond's demographics, rich heritage, diverse needs, and unique opportunities, and that facilitate active, caring, and connected communities.*

#### *2.1. Strong neighbourhoods.*

This report supports Council's 2014-2018 Term Goal #5 Partnerships and Collaboration:

*Continue development and utilization of collaborative approaches and partnerships with intergovernmental and other agencies to help meet the needs of the Richmond community.*

#### *5.1. Advancement of City priorities through strong intergovernmental relationships.*

This report supports Council's 2014-2018 Term Goal #6 Quality Infrastructure Networks:

*Continue diligence towards the development of infrastructure networks that are safe, sustainable, and address the challenges associated with aging systems, population growth, and environmental impact.*

#### *6.1. Safe and sustainable infrastructure.*

#### *6.2. Infrastructure is reflective of and keeping pace with community need.*

## **Analysis**

### **Shared Stewardship and Joint Use of Community Assets**

Schools and their surrounding parks have long served as the cornerstone of each neighbourhood community. Currently, Richmond features an aggregate of 1,695 acres of dedicated parkland, comprised of 121 parks, 100 sport fields and over 50 km of trails. Approximately 22% of this land (373 acres) is owned by SD38. Over the past three decades, the City and SD38 have shared responsibilities for the stewardship of school parks. These green spaces serve as critical components of the City's parks and open space system and play a vital role in the promotion of physical literacy in not only Richmond students, but local residents of all ages.

In consideration for the City's maintenance of school grounds, SD38 provides over 16,000 hours of after-hours access to school gyms and multipurpose rooms each year for community use. After-hours usage ranges from sports such as hockey, soccer, badminton and Special Olympics to youth development programs such as Girl Guides and Air Cadets. In addition to capitalizing on each party's assets and expertise for utility efficiencies, this reciprocal arrangement allows the City to provide additional community programming to an ever growing population that would otherwise exceed its existing infrastructure capacity.

### **Fiscal Challenges of School District No. 38 (Richmond)**

Due to decreasing enrolment, shifting demographics in multiple neighbourhoods, administrative budget cuts and rising expenses, SD38 faces the continual challenge of balancing a budget while minimizing impact to its delivery of educational services.

### **Seismic Mitigation Program**

As of October 2016, the Province of British Columbia has spent \$1.2 billion to remediate 160 high-risk schools as part of its Seismic Mitigation Program. Although an additional \$560 million has been allocated for seismic projects in the Province's three-year capital plan, there are still 42 high-risk schools being assessed in the business case development stage (three of which are located in Richmond) and 118 high-risk schools yet to be addressed (22 of which are located in Richmond) (Attachment 2). Staff have been working with SD38 staff, who are in the process of preparing a Project Definition Report to ameliorate seismic risk by advocating for the eventual replacement of William Cook Elementary in Richmond's City Centre. As the aggregate site is a joint City/SD38 property, this will be the subject of a future report.

### **School Closure Process**

In July 2015, SD38 initiated a public consultation process to examine operational efficiencies, underutilization impacts and seismic conditions at local schools. The objective of the project was to move SD38 schools towards a 95% capacity utilization rate (current and forecasted), which the Ministry of Education used as a guideline in its evaluation of business cases for both new school space and seismic mitigation funding.

Based on the findings from multiple surveys, online forums and open houses, 16 of 48 Richmond schools were identified as possible closure options. Following a consultation process with the shortlisted schools, the Superintendent of Schools released a report to the Board of Education on September 19, 2016, recommending that Alfred B. Dixon Elementary, Donald E. McKay Elementary and Daniel Woodward Elementary, depicted in the enclosed aerial maps (Attachment 3), be considered for closure effective July 1, 2017.

On September 21, 2016, the Ministry of Education issued a press release clarifying, and subsequently removing, the 95% capacity utilization target, which was only a district-wide goal in connection with seismic upgrades for School District No. 39 (Vancouver) under a signed August 20, 2014, memorandum of understanding with the Province.

From September 26 to 28, 2016, SD38 held three town hall style meetings at each of the schools being considered for closure and a regular board meeting on October 3, 2016, to allow the public to voice their concerns. Shortly thereafter, a joint letter from Linda Reid, Speaker of the Legislative Assembly for British Columbia and Member of the Legislative Assembly (MLA) for Richmond East, Teresa Wat, MLA for Richmond Centre, and John Yap, MLA for Richmond-Steveston, was published in the October 5, 2016, edition of the Richmond News newspaper (Attachment 4) indicating that the Province had allocated an additional \$560 million for high-risk seismic projects and that all high-risk schools would be upgraded or replaced.

#### Termination of School Closure Process and Request for Letter of Support

Although the Board of Education was originally scheduled to vote on school closures on October 17, 2016, due to overwhelming public feedback, a special public meeting was held on October 11, 2016, whereby the Board of Education unanimously elected to terminate the school closure process.

As detailed in Attachment 1, the Board also passed the following resolution:

*"WHEREAS the Board of Education (Richmond) believes that the safety of the students in our district is of paramount importance;*

*AND WHEREAS we believe that schools are the centre of our community;*

*BE IT RESOLVED THAT the Board of Education (Richmond) write to the Mayor and City Council of Richmond asking for their comments and support in asking the Ministry for funding for the seismic remediation of all schools in Richmond.*

*CARRIED"*

The Board announced that the projected budget shortfall for its 2016/2017 fiscal year would be covered by SD38's accumulated operating surplus while it developed a plan to address its ongoing operating deficit.

The City and SD38 continue to coordinate efforts to promote the educational, emotional and physical literacy of Richmond students, while ensuring their safety. As such, staff recommend that Richmond City Council send a letter to the British Columbia Premier, the British Columbia Minister of Education, and the Richmond MLAs, in support of SD38's request for seismic remediation funding for all schools in Richmond in need of seismic upgrades to ensure the long-term safety of students and school staff.

**Financial Impact**

None.

**Conclusion**

As cities grow in both size and density, the role of school grounds and neighbourhood parks as safe havens for opportunities to learn, play and connect, becomes increasingly vital to the development and sustainability of local communities. The City will continue to work with SD38 to ensure that school facilities, playgrounds and neighbourhood green spaces are well maintained, safe and accessible for the benefit and enjoyment of all Richmond residents.



Mike Redpath  
Senior Manager, Parks  
(604-247-4942)



Beayue Louie  
Park Planner  
(604-244-1293)

- Att. 1: Letter request to Mayor Malcolm Brodie and City Council, dated October 24, 2016, from Debbie Tablotney, Chairperson of the Board of Education of School District No. 38 (Richmond)
- 2: Progress Report – Seismic Mitigation Program (October 2016) Ministry of Education (British Columbia)
- 3: Aerial maps of Dixon Elementary, McKay Elementary and Woodward Elementary
- 4: “Letter: School safety is paramount, says Richmond MLAs”, dated October 5, 2016, Richmond News



School District No. 38 (Richmond)  
7811 Granville Avenue, Richmond, BC V6Y 3E3  
Tel: (604) 668-6000 Fax: (604) 233-0150

October 24, 2016

Mayor Malcolm Brodie and City Council  
City of Richmond  
6911 No. 3 Road  
Richmond, BC  
V6Y 2C1

Dear Mayor Brodie and Councillors:

On October 11, 2016 the Board of Education held a Special Meeting during which the current school closure process was terminated. At that meeting, the Board passed the following motion:

237/2016

**WHEREAS** the Board of Education (Richmond) believes that the safety of the students in our district is of paramount importance;

**AND WHEREAS** we believe that schools are the centre of our community;

**BE IT RESOLVED THAT** the Board of Education (Richmond) write to the Mayor and City Council of Richmond asking for their comments and support in asking the Ministry for funding for the seismic remediation of all schools in Richmond.

CARRIED

There are 25 schools in Richmond that have been rated as high seismic risk. Many of these facilities also have community uses, and so we urge Council and the entire community to join us in advocating to the Ministry of Education for funding of the seismic remediation of schools in Richmond.

Sincerely,

A handwritten signature in black ink, appearing to read "Debbie Tablotney", with a stylized, flowing script.

Mrs. Debbie Tablotney, Chairperson  
On Behalf of the Board of Education (Richmond)

cc Richmond Board of Education  
Superintendent of Schools  
Richmond MLAs

**Board of Education:**  
Debbie Tablotney - Chairperson  
Donna Sargent - Vice Chairperson  
Ken Hamaguchi Jonathan Ho Sandra Nixon  
Eric Yung Alice Wong

## PROGRESS REPORT - SEISMIC MITIGATION PROGRAM

Oct-16

### SUMMARY

160 Schools Completed  
 16 Under Construction  
 6 Proceeding to Construction  
 42 In Business Case Development Stage  
**224 PROJECTS COMPLETED OR IN PROGRESS**

118 Remaining Schools to be Addressed in the Seismic Mitigation Program

**342 TOTAL PROJECTS IN THE SEISMIC MITIGATION PROGRAM**

160 SCHOOLS COMPLETED			
#	SD#	SCHOOL DISTRICT	SCHOOL
1	33	Chilliwack	Rosedale Elementary
2	33	Chilliwack	Chilliwack Central Community Elementary
3	33	Chilliwack	Yarrow Community School
4	33	Chilliwack	Rosedale Middle
5	33	Chilliwack	Chilliwack Secondary
6	34	Abbotsford	Abbotsford Senior Secondary
7	34	Abbotsford	Aberdeen Elementary
8	34	Abbotsford	Jackson Elementary
9	34	Abbotsford	Yale Secondary
10	34	Abbotsford	W J Mouat Secondary
11	34	Abbotsford	William A. Fraser Elementary
12	35	Langley	Fort Langley Elementary
13	35	Langley	Belmont Elementary
14	35	Langley	Peterson Road Elementary
15	35	Langley	Langley Fine Arts School
16	36	Surrey	Colebrook Elementary
17	36	Surrey	Clayton Elementary
18	36	Surrey	East Kensington Elementary
19	36	Surrey	Halls Prairie Elementary
20	36	Surrey	Sullivan Elementary
21	36	Surrey	J T Brown Elementary
22	36	Surrey	Dr F D Sinclair Elementary
23	36	Surrey	Sunnyside Elementary
24	36	Surrey	K B Woodward Elementary
25	36	Surrey	Green Timbers Elementary
26	36	Surrey	Guildford Park Secondary
27	36	Surrey	Mountainview Montessori
28	36	Surrey	A H P Matthew Elementary
29	36	Surrey	T E Scott Elementary
30	36	Surrey	Senator Reid Elementary
31	36	Surrey	McLeod Road Elementary
32	36	Surrey	Surrey Traditional
33	36	Surrey	Ellendale Elementary
34	36	Surrey	Frank Hurt Secondary
35	36	Surrey	Kennedy Trail Elementary
36	36	Surrey	Discovery Elementary

37	37	Delta	Sunshine Hills Elementary
38	37	Delta	Devon Gardens Elementary
39	37	Delta	Delview Jr Secondary
40	37	Delta	Port Guichon Elementary
41	37	Delta	Burnsview Jr Secondary
42	37	Delta	South Delta Secondary
43	37	Delta	Pinewood Elementary
44	38	Richmond	Garden City Elementary
45	38	Richmond	Steveston Secondary
46	38	Richmond	Samuel Brighthouse Elementary
47	39	Vancouver	Vancouver Technical Secondary
48	39	Vancouver	University Hill Secondary
49	39	Vancouver	Kerrisdale Elementary
50	39	Vancouver	Simon Fraser Elementary
51	39	Vancouver	Sir Richard McBride Elementary
52	39	Vancouver	Laura Secord Elementary
53	39	Vancouver	Walter Moberly Elementary
54	39	Vancouver	Charles Dickens Elementary
55	39	Vancouver	John Norquay Elementary
56	39	Vancouver	Sir James Douglas Elementary
57	39	Vancouver	Lord Kitchener Elementary
58	39	Vancouver	Trafalgar Elementary
59	39	Vancouver	Sir Wilfrid Laurier Elementary
60	39	Vancouver	Captain James Cook Elementary
61	39	Vancouver	General Brock Annex
62	39	Vancouver	Sir James Douglas Annex
63	39	Vancouver	Sir Wilfrid Laurier Annex
64	39	Vancouver	Britannia Community Elementary
65	39	Vancouver	Ecole Jules Quesnel Elementary
66	39	Vancouver	J.W. Sexsmith Community Elementary
67	39	Vancouver	General Gordon Elementary
68	40	New Westminster	Qayqayt Elementary (formerly John Robson Elementary)
69	41	Burnaby	Burnaby Central Secondary
70	41	Burnaby	Cariboo Hill Secondary
71	41	Burnaby	Edmonds Community
72	41	Burnaby	Brantford Elementary
73	41	Burnaby	Capitol Hill Elementary
74	41	Burnaby	Chaffey-Burke Elementary
75	41	Burnaby	Douglas Road Elementary
76	41	Burnaby	Gilmore Community Elementary
77	42	Maple Ridge / Pitt Meadows	Garibaldi Secondary
78	43	Coquitlam	Anmore Elementary
79	43	Coquitlam	Baker Drive Elementary
80	43	Coquitlam	Eagle Ridge Elementary
81	43	Coquitlam	R C Macdonald Elementary
82	43	Coquitlam	James Park Elementary
83	43	Coquitlam	Lord Baden-Powell Elementary
84	43	Coquitlam	Meadowbrook Elementary
85	43	Coquitlam	Miller Park Community School
86	43	Coquitlam	Parkland Elementary
87	43	Coquitlam	Porter Street Elementary
88	43	Coquitlam	Ranch Park Elementary



89	43	Coquitlam	Rochester Elementary
90	43	Coquitlam	Roy Stibbs Elementary
91	43	Coquitlam	Seaview Community School
92	43	Coquitlam	Westwood Elementary
93	43	Coquitlam	Maillard Middle
94	43	Coquitlam	Pitt River Middle
95	43	Coquitlam	Pleasantside Elementary
96	44	North Vancouver	Ridgeway Elementary
97	44	North Vancouver	Queen Mary Elementary
98	44	North Vancouver	Westview Elementary
99	44	North Vancouver	Highlands Elementary
100	44	North Vancouver	Canyon Heights Elementary
101	44	North Vancouver	Carisbrooke Elementary
102	44	North Vancouver	Carson Graham Secondary
103	45	West Vancouver	West Vancouver Secondary
104	46	Sunshine Coast	Gibsons Elementary
105	46	Sunshine Coast	Madeira Park Elementary
106	47	Powell River	Westview Elementary (formerly Grief Point)
107	47	Powell River	Henderson Elementary
108	48	Sea to Sky	Myrtle Philip Community School
109	50	Haida Gwaii	Port Clements Elementary
110	61	Greater Victoria	Victoria West Elementary
111	61	Greater Victoria	George Jay Elementary
112	61	Greater Victoria	Margaret Jenkins Elementary
113	61	Greater Victoria	Monterey Middle
114	61	Greater Victoria	Quadra Elementary
115	61	Greater Victoria	Tillicum Elementary
116	61	Greater Victoria	Willows Elementary
117	61	Greater Victoria	Mckenzie Elementary
118	61	Greater Victoria	Doncaster Elementary
119	61	Greater Victoria	James Bay Community
120	61	Greater Victoria	Central Middle
121	61	Greater Victoria	Lansdowne Middle
122	61	Greater Victoria	Gordon Head Middle
123	61	Greater Victoria	Mount Douglas Secondary
124	61	Greater Victoria	Cloverdale Elementary
125	62	Sooke	Happy Valley Elementary
126	62	Sooke	Sangster Elementary
127	62	Sooke	Belmont Secondary
128	62	Sooke	Spencer Middle
129	62	Sooke	Dunsmuir Middle
130	63	Saanich	Cordova Bay Elementary
131	63	Saanich	Lochside Elementary
132	63	Saanich	Parkland Secondary
133	63	Saanich	Deep Cove Elementary
134	63	Saanich	Prospect Lake Elementary
135	63	Saanich	Stelly'S Secondary
136	63	Saanich	Claremont Secondary
137	63	Saanich	North Saanich Middle
138	64	Gulf Islands	Salt Spring Island Middle
139	68	Nanaimo-Ladysmith	Wellington Secondary
140	68	Nanaimo-Ladysmith	Pauline Haarer Elementary

141	69	Qualicum	Parksville Elementary
142	70	Alberni	Alberni District Secondary
143	70	Alberni	Maquinna Elementary
144	71	Comox Valley	Highland Secondary
145	71	Comox Valley	Ecole Robb Road
146	72	Campbell River	Carihi Secondary
147	72	Campbell River	Ecole Phoenix Middle
148	72	Campbell River	Southgate Middle
149	72	Campbell River	Ecole Des Deux Mondes Elementary
150	72	Campbell River	Pinecrest Elementary
151	72	Campbell River	Willow Point Elementary
152	78	Fraser-Cascade	Hope Secondary
153	78	Fraser-Cascade	C E Barry Intermediate
154	79	Cowichan Valley	Crofton Elementary
155	79	Cowichan Valley	Drinkwater Elementary
156	79	Cowichan Valley	Lake Cowichan Secondary
157	84	Vancouver Island West	Gold River Secondary
158	84	Vancouver Island West	Zeballos Elementary-Secondary
159	85	Vancouver Island North	Eagle View Elementary
160	93	Conseil Scolaire Francophone	Ecole Rose-Des-Vents

16 UNDER CONSTRUCTION			
#	SD#	SCHOOL DISTRICT	SCHOOL
1	37	Delta	Delta Secondary
2	39	Vancouver	Kitsilano Secondary
3	39	Vancouver	Lord Strathcona Community Elementary
4	39	Vancouver	Queen Mary Elementary
5	39	Vancouver	L'Ecole Bilingue Elementary
6	39	Vancouver	Lord Nelson Elementary
7	40	New Westminster	F W Howay Elementary
8	41	Burnaby	Alpha Secondary
9	41	Burnaby	Montecito Elementary
10	43	Coquitlam	Centennial Secondary
11	43	Coquitlam	Moody Middle
12	43	Coquitlam	Banting Middle
13	44	North Vancouver	Windsor Secondary
14	71	Comox Valley	Georges P. Vanier Secondary
15	93	Conseil Scolaire Francophone	École Des Pionniers
16	93	Conseil Scolaire Francophone	École Cote Du Soleil

6 PROCEEDING TO CONSTRUCTION			
#	SD#	SCHOOL DISTRICT	SCHOOL
1	35	Langley	Langley Secondary (LS5)
2	39	Vancouver	Sir Charles Kingsford-Smith Elementary
3	39	Vancouver	Dr. Annie B. Jamieson Elementary
4	39	Vancouver	Sir Sandford Fleming Elementary
5	44	North Vancouver	Argyle Secondary
6	72	Campbell River	Cortes Island Elementary Junior Secondary

42 IN BUSINESS CASE DEVELOPMENT STAGE			
#	SD#	SCHOOL DISTRICT	SCHOOL
1	34	Abbotsford	Abbotsford Traditional Secondary
2	38	Richmond	William Cook Elementary
3	38	Richmond	James Gilmore Elementary
4	38	Richmond	Hugh Boyd Secondary
5	39	Vancouver	Henry Hudson Elementary
6	39	Vancouver	David Livingstone Elementary
7	39	Vancouver	John Oliver Secondary
8	39	Vancouver	Templeton Secondary
9	39	Vancouver	Point Grey Secondary
10	39	Vancouver	Killarney Secondary
11	39	Vancouver	David Thompson Secondary
12	39	Vancouver	Prince Of Wales Secondary
13	39	Vancouver	Eric Hamber Secondary
14	39	Vancouver	Sir Guy Carleton Community Elementary
15	39	Vancouver	David Lloyd George Elementary
16	39	Vancouver	General Wolfe Elementary
17	39	Vancouver	Lord Tennyson Elementary
18	39	Vancouver	Sir Wilfred Grenfell Community
19	39	Vancouver	Bayview Community Elementary
20	39	Vancouver	Edith Cavell Elementary
21	39	Vancouver	Sir Matthew Begbie Elementary
22	39	Vancouver	Maple Grove Elementary
23	39	Vancouver	Renfrew Community Elementary
24	39	Vancouver	Sir Alexander MacKenzie Elem.
25	39	Vancouver	Waverley Elementary
26	39	Vancouver	Dr. George M. Weir Elementary
27	40	New Westminster	Richard McBride Elementary
28	40	New Westminster	Lord Tweedsmuir Elementary
29	41	Burnaby	Burnaby North Secondary
30	41	Burnaby	Stride Avenue Community School
31	42	Maple Ridge / Pitt Meadows	Fairview Elementary
32	42	Maple Ridge / Pitt Meadows	Westview Secondary
33	43	Coquitlam	Moody Elementary
34	43	Coquitlam	Irvine Elementary
35	43	Coquitlam	Montgomery Middle
36	43	Coquitlam	Minnekhada Middle
37	44	North Vancouver	Handsworth Secondary
38	61	Greater Victoria	Victoria High
39	61	Greater Victoria	Cedar Hill Jr. Secondary
40	61	Greater Victoria	Shoreline Community Middle
41	61	Greater Victoria	Reynolds Secondary
42	62	Sooke	Ruth King Elementary

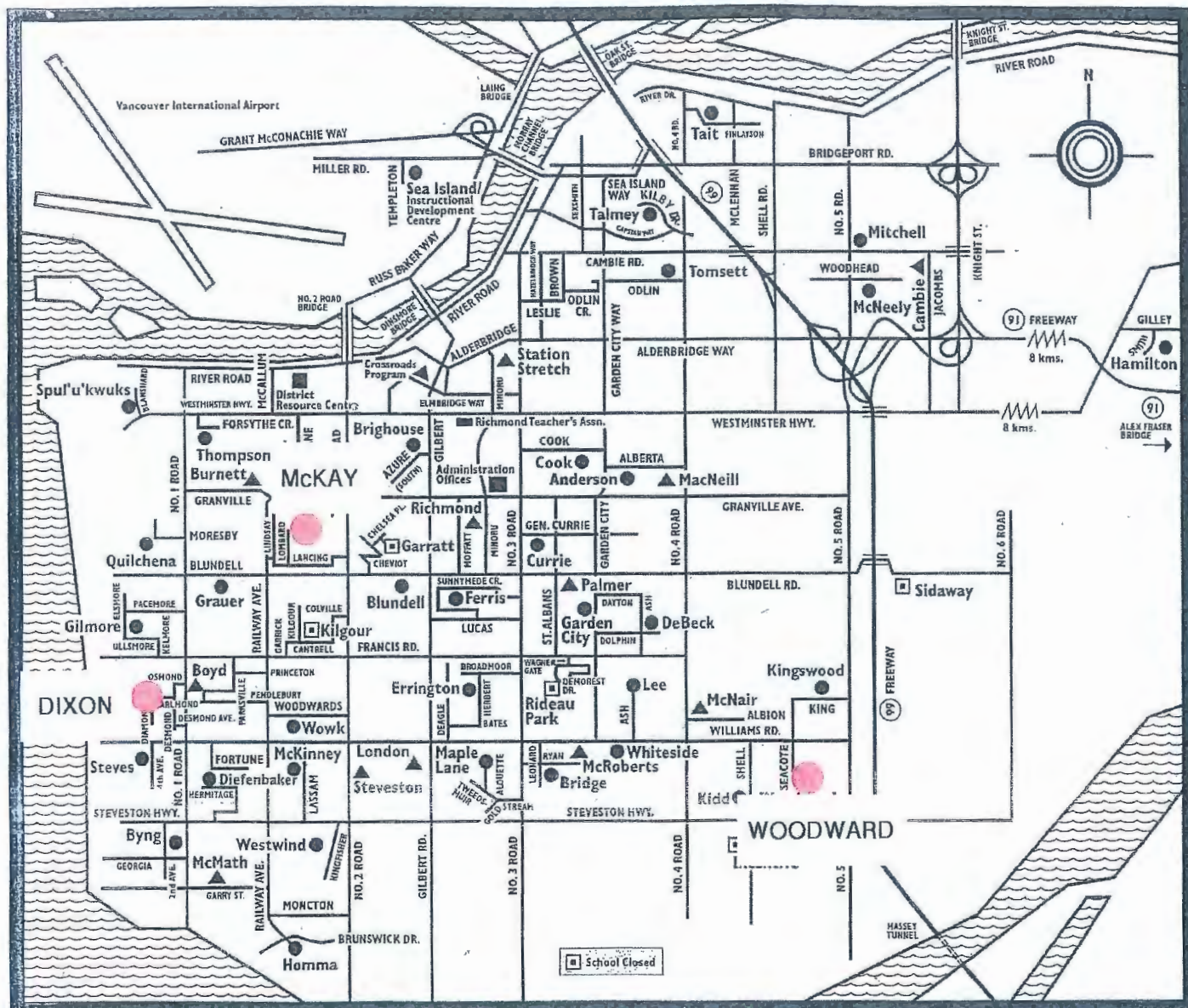
118 REMAINING SCHOOLS TO BE ADDRESSED IN THE SEISMIC MITIGATION PROGRAM			
#	SD#	SCHOOL DISTRICT	SCHOOL
1	34	Abbotsford	King Traditional Elementary
2	35	Langley	Mountain Secondary
3	35	Langley	Langley Fundamental Elementary
4	35	Langley	Apex Secondary (formerly Otter Elementary)

5	35	Langley	H D Stafford Secondary
6	35	Langley	D W Poppy Secondary
7	35	Langley	Brookwood Secondary
8	35	Langley	Shortreed Community Elementary
9	36	Surrey	Mary Jane Shannon Elementary
10	36	Surrey	Bear Creek Elementary
11	36	Surrey	Queen Elizabeth Secondary
12	36	Surrey	Prince Charles Elementary
13	36	Surrey	David Brankin Elementary
14	36	Surrey	Holly Elementary
15	36	Surrey	George Greenaway Elementary
15	37	Delta	Gibson Elementary
17	38	Richmond	R M Grauer Elementary
18	38	Richmond	Sea Island Elementary
19	38	Richmond	James Thompson Elementary
20	38	Richmond	Blundell Elementary
21	38	Richmond	James Whiteside Elementary
22	38	Richmond	Walter Lee Elementary
23	38	Richmond	Daniel Woodward Elementary
24	38	Richmond	Manoah Steves Elementary
25	38	Richmond	William Bridge Elementary
26	38	Richmond	Maple Lane Elementary
27	38	Richmond	Quilchena Elementary
28	38	Richmond	Mitchell Elementary
29	38	Richmond	Alfred B Dixon Elementary
30	38	Richmond	John T Errington Elementary
31	38	Richmond	Tomsett Elementary
32	38	Richmond	W D Ferris Elementary
33	38	Richmond	Donald E Mckay Elementary
34	38	Richmond	École des Navigateurs (Kilgour)
35	38	Richmond	Robert J Tait Elementary
36	38	Richmond	James Mckinney Elementary
37	38	Richmond	Westwind Elementary
38	38	Richmond	John G Diefenbaker Elementary
39	39	Vancouver	King George Secondary
40	39	Vancouver	Britannia Community Secondary
41	39	Vancouver	Gladstone Secondary
42	39	Vancouver	Sir Winston Churchill Secondary
43	39	Vancouver	Windermere Community Secondary
44	39	Vancouver	Admiral Seymour Elementary
45	39	Vancouver	Sir William MacDonald Elementary
46	39	Vancouver	Queen Alexandra Elementary
47	39	Vancouver	Emily Carr Elementary
48	39	Vancouver	Florence Nightingale Elementary
49	39	Vancouver	Sir John Franklin Community
50	39	Vancouver	Lord Beaconsfield Elementary
51	39	Vancouver	Quilchena Elementary
52	39	Vancouver	Grandview Elementary
53	39	Vancouver	Sir William Osler Elementary
54	39	Vancouver	Southlands Elementary
55	39	Vancouver	G T Cunningham Elementary
56	39	Vancouver	Graham Bruce Community Elementary

57	39	Vancouver	Tillicum Elementary Annex
58	39	Vancouver	False Creek Elementary
59	39	Vancouver	General Brock Elementary
60	39	Vancouver	Dr. H N MacCorkindale Elementary
61	39	Vancouver	Sir Richard McBride Annex
62	39	Vancouver	Lord Byng Secondary
63	39	Vancouver	Lord Selkirk Elementary
64	39	Vancouver	Queen Elizabeth Elementary
65	39	Vancouver	Thunderbird Elementary
66	39	Vancouver	Chief Maquinna Elementary
67	39	Vancouver	Carnarvon Community Elementary
68	39	Vancouver	Dr. A R Lord Elementary
69	39	Vancouver	Nootka Community Elementary
70	39	Vancouver	John Henderson Elementary
71	39	Vancouver	Queen Victoria Annex
72	39	Vancouver	Queen Elizabeth Annex
73	39	Vancouver	Lord Selkirk Annex
74	39	Vancouver	Mount Pleasant Elementary
75	39	Vancouver	Champlain Heights Community Elementary
76	39	Vancouver	Waverley Annex
77	41	Burnaby	Armstrong Elementary
78	41	Burnaby	Glenwood Elementary
79	41	Burnaby	Moscrop Jr. Secondary
80	41	Burnaby	Cascade Heights Elementary
81	41	Burnaby	Kitchener Elementary
82	41	Burnaby	Marlborough Elementary
83	41	Burnaby	Maywood Community
84	41	Burnaby	Parkcrest Elementary
85	41	Burnaby	Rosser Elementary
86	41	Burnaby	Seaforth Elementary
87	41	Burnaby	Stoney Creek Elementary
88	43	Coquitlam	Maple Creek Middle
89	43	Coquitlam	Cedar Drive Elementary
90	43	Coquitlam	Glenayre Elementary
91	43	Coquitlam	Hillcrest Middle
92	43	Coquitlam	Mary Hill Elementary
93	43	Coquitlam	Dr. Charles Best Secondary
94	43	Coquitlam	Port Moody Secondary
95	44	North Vancouver	Balmoral Jr. Secondary
96	45	West Vancouver	Sentinel Secondary
97	48	Sea to Sky	Howe Sound Secondary
98	52	Prince Rupert	Prince Rupert Middle (formerly Secondary)
99	61	Greater Victoria	Craigflower Elementary
100	61	Greater Victoria	Arbutus Middle
101	61	Greater Victoria	Lambrick Park Secondary
102	61	Greater Victoria	Braefoot Elementary
103	61	Greater Victoria	MacAulay Elementary
104	62	Sooke	Willway Elementary
105	63	Saanich	Children's Development Centre
106	63	Saanich	Keating Elementary
107	68	Nanaimo-Ladysmith	North Cedar Intermediate
108	68	Nanaimo-Ladysmith	Cilaire Elementary

109	68	Nanaimo-Ladysmith	Pleasant Valley Elementary
110	70	Alberni	Ucluelet Secondary
111	70	Alberni	Wickaninnish Community
112	70	Alberni	Ucluelet Elementary
113	71	Comox Valley	Lake Trail Secondary (formerly Middle)
114	71	Comox Valley	Courtenay Elementary
115	75	Mission	Mission Secondary
116	79	Cowichan Valley	Cowichan Secondary
117	79	Cowichan Valley	Cowichan Trades Centre (Formerly Koksilah Elementary)
118	93	Conseil Scolaire Francophone	École Anne Herbert







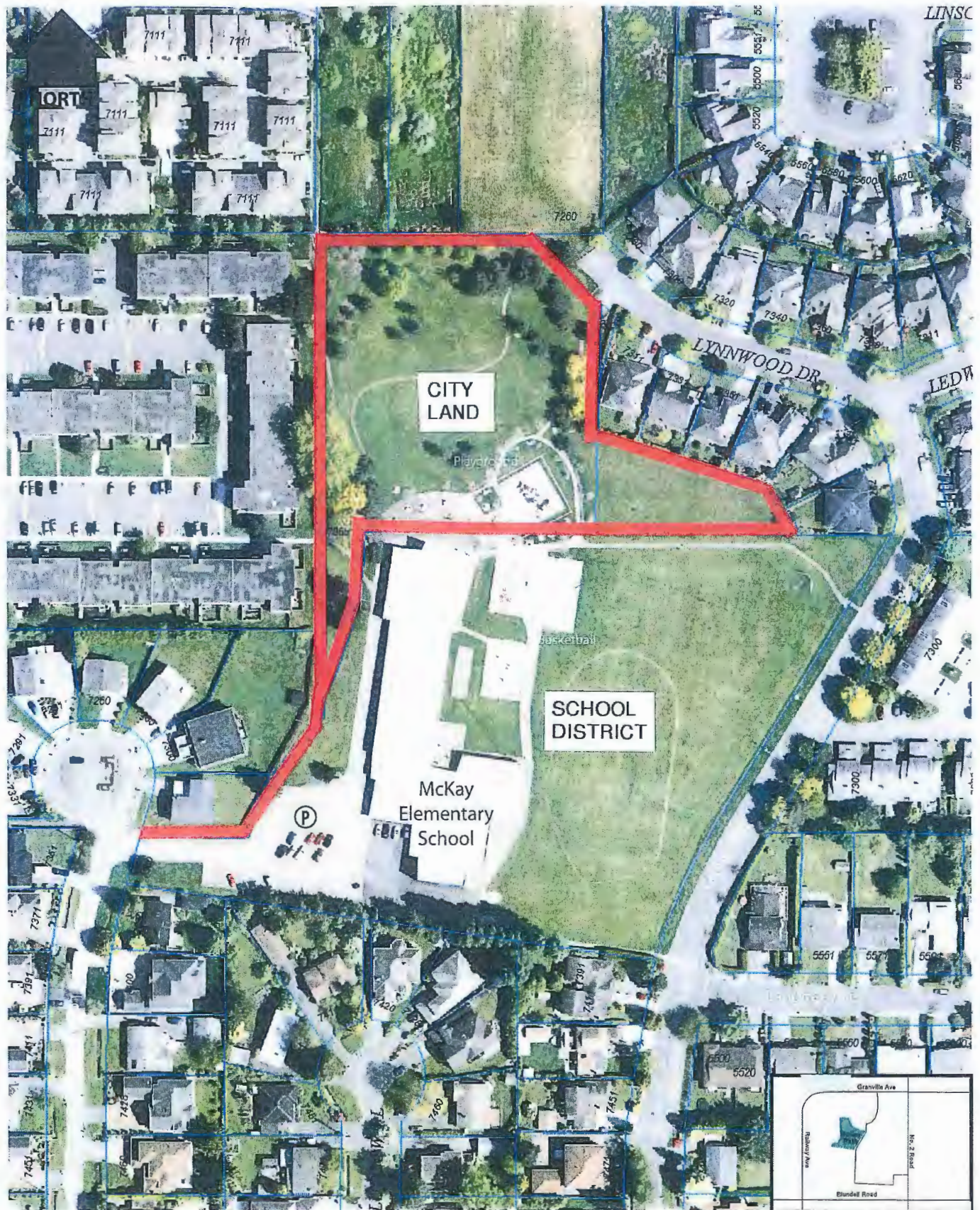


Dixon Neighbourhood School Park

9331 Diamond Road

**PRCS - 228**





McKay Neighbourhood School Park

7360 Lombard Street

**PRCS - 229**





Woodward Elementary School

10300 Seacote Road





## Letter: School safety is paramount, say Richmond MLAs

Richmond News

October 5, 2016 09:46 AM



Linda Reid, Teresa Wat and John Yap. Richmond MLAs

Dear Editor,

Re: "MLAs should stand up or step down," Letters, Sept. 28.

We hope to address and clarify a few points with respect to Ms. Nowitsky's letter to the editor.

Over the years, we have visited numerous public schools in Richmond. We have talked to students, teachers and parents, and understand how important it is to ensure our children's learning environment is safe and secured.

That is why our government has launched the seismic mitigation program to make schools safer in the event of an earthquake.

So far, the province has spent \$1.12 billion through the Seismic Mitigation Program to complete 155 high-risk seismic projects throughout British Columbia, which includes three public schools in the Richmond School District. They are the Garden City elementary school, Samuel Brighthouse elementary school and Steveston-London secondary school.

The province also provided a letter to the Richmond School District on May 24, 2016 requesting the school district complete the project definition reports for both Hugh Boyd secondary and Cook elementary in order to advance work on both those schools.

This work is critical to defining the scope and costs to allow for funding consideration and future approval. We understand the school district is working hard to advance this work.

We also currently have another \$560 million allocated for high-risk seismic projects in our three-year capital plan.

Our Seismic Mitigation Program is globally recognized and will ensure all high-risk schools are upgraded or replaced.

The money is available to all high-risk schools and the pace of projects is largely dependent on how quickly and efficiently local school boards map out their priorities and deliver on upgrades.

**PRCS - 231**

03/11/2016

Letter: School safety is paramount, say Richmond MLAs

We want to ensure our constituents that funding is available for all high-risk schools in B.C., which include those in Richmond.

The safety of students and staff is paramount. Our government will continue to make sure this program delivers as many seismic upgrades as soon as possible.

Teresa Wat, Linda Reid and John Yap

MLAs for Richmond Centre, Richmond East and Richmond-Steveston

© 2016 Richmond News