



City of Richmond

Report to Committee

To: Parks, Recreation and Cultural Services Committee **Date:** May 9, 2017

From: Mike Redpath, Senior Manager, Parks **File:** 06-2345-20-STEVE2/Vol 01

Re: **Steveston Community Park Playground Renewal Preferred Concept Plan**

Staff Recommendation

1. That the Steveston Community Park Playground Renewal Preferred Concept Plan as detailed in the staff report titled "Steveston Community Park Playground Renewal Preferred Concept Plan," dated May 9, 2017, from the Senior Manager, Parks, be coordinated with the planning for the Steveston Community Facility Replacement Project and at the conclusion of that planning process, staff bring forward a report outlining the next steps for renewal of the playground.

Mike Redpath
Senior Manager, Parks
(604-247-4942)

Att. 8

REPORT CONCURRENCE		
ROUTED TO: Recreation Services	CONCURRENCE <input checked="" type="checkbox"/>	CONCURRENCE OF GENERAL MANAGER
REVIEWED BY STAFF REPORT / AGENDA REVIEW SUBCOMMITTEE	INITIALS: OB	APPROVED BY CAO (ACTING)

Staff Report

Origin

At the February 10, 2015 Council meeting, The following resolution was adopted;

“That staff commence a park planning process for the renewal of the playground located in Steveston Community Park as outlined in the staff report titled ‘Steveston Community Society Contribution to Steveston Community Park Playground Renewal,’ dated January 9, 2015, from the Senior Manager, Parks.

The report was prepared in response to a letter received in November 2014, addressed to the Senior Manager, Parks, from the Steveston Community Society expressing an interest to make a contribution towards the renewal of the Steveston Community Park playground. Council approved the staff recommendation and the first phase of the planning process commenced in late 2015.

The purpose of this report is to summarize the Steveston Community Park Playground Renewal process to date and describe the Steveston Community Park Playground Renewal Preferred Concept Plan (the Concept Plan) (Attachment 1).

This report supports Council’s 2014-2018 Term Goal #2 A Vibrant, Active and Connected City:

Continue the development and implementation of an excellent and accessible system of programs, services, and public spaces that reflect Richmond’s demographics, rich heritage, diverse needs, and unique opportunities, and that facilitate active, caring, and connected communities.

2.1. *Strong neighbourhoods.*

2.3. *Outstanding places, programs and services that support active living, wellness and a sense of belonging.*

This report supports Council’s 2014-2018 Term Goal #3 A Well-Planned Community:

Adhere to effective planning and growth management practices to maintain and enhance the livability, sustainability and desirability of our City and its neighbourhoods, and to ensure the results match the intentions of our policies and bylaws.

3.2. *A strong emphasis on physical and urban design.*

This report supports Council’s 2014-2018 Term Goal #9 A Well-Informed Citizenry:

Continue to develop and provide programs and services that ensure the Richmond community is well-informed and engaged on City business and decision making.

9.1. *Understandable, timely, easily accessible public communication.*

9.2. *Effective engagement strategies and tools.*

Analysis

Background

Steveston Community Park is a highly popular 30 acre recreational, cultural and community-oriented hub centrally located in the Steveston area. It is designated as a Community Park, however, due to its prominent location within the historic Steveston Village; it attracts visitors and tourists from across Richmond and beyond. Steveston Community Park supports multiple functions including active sport use, informal community use, and hosts a variety of facilities, attractions, and events such as the Steveston Community Centre, Steveston Interurban Tram, Steveston Martial Arts Centre and annual Steveston Salmon Festival.

Due to the Steveston Community Park playground's highly accessible and prominent location within Steveston Village near the intersection of No.1 Road and Moncton Street, it is very well-used and functions as a destination playground.

Current Playground Condition

The most recent extensive upgrade to the Steveston Community Park playground took place in 2003 and included significant expansion of its footprint, creation of separate preschool and school-aged play areas and upgrades to existing structures, such as the iconic trawler structure.

The adjacent water park was built in 2006 and in 2014 the highly popular slide mound was reconstructed.

While all of the equipment and surfacing in the Steveston Community Park playground meet current safety standards as per the City's maintenance and inspection programs, some areas of the playground are reaching the end of their life cycle or are potentially underutilized and community users have voiced a desire for upgraded playground equipment and alternative surfacing.

Steveston Community Park Playground Renewal Process

The Steveston Community Park playground renewal process provides an opportunity to take a holistic approach towards the future renewal of this important playground. To date, the process has, and will continue to be, conducted in phases to allow community input at key milestones ensuring a transparent and inclusive process.

The image below illustrates the various stages in phase one and phase two of the park planning process:



Public engagement has been a key part of the development of concepts for the renewal of the playground. Public open houses and the use of Let’s Talk Richmond have allowed for broad consultation with park users and the general public. In addition, Parks staff have consulted with Steveston Community Centre preschool teachers, an Inclusive Design Specialist from the Rick Hansen Foundation, and the Steveston Community Society Playground Re-design Committee.

Phase One: Community Engagement

Spring Break Workshops

City Parks staff led two design workshops with children attending spring break camps at the Steveston Community Center in March 2016. One workshop was held for children between the ages of six and eight years old and the other for children between the ages of eight and 12 years old. Approximately 12 children participated in each workshop. Through a variety of activities, the children were invited to identify their favorite existing playground elements and design their ideal future playground. The children participating were excited and eager to share their opinions and ideas about the Steveston Community Park playground.

Public Open House

A public open house was held adjacent to the Steveston Community Park playground in late March 2016. The public open house was well attended with approximately 160 people participating.

The drop-in style open house was formatted to gain insight into community opinions about the current playground conditions and ideas for its potential future renewal. There were display boards with background information that explained the planning process, provided a brief history

of Steveston Village, and the Steveston Community Park playground and an overview of the existing playground conditions (Attachment 2).

Participants were invited to provide input in several different ways including voting on their favourite existing playground elements or by completing a survey (Attachment 3).

Let's Talk Richmond

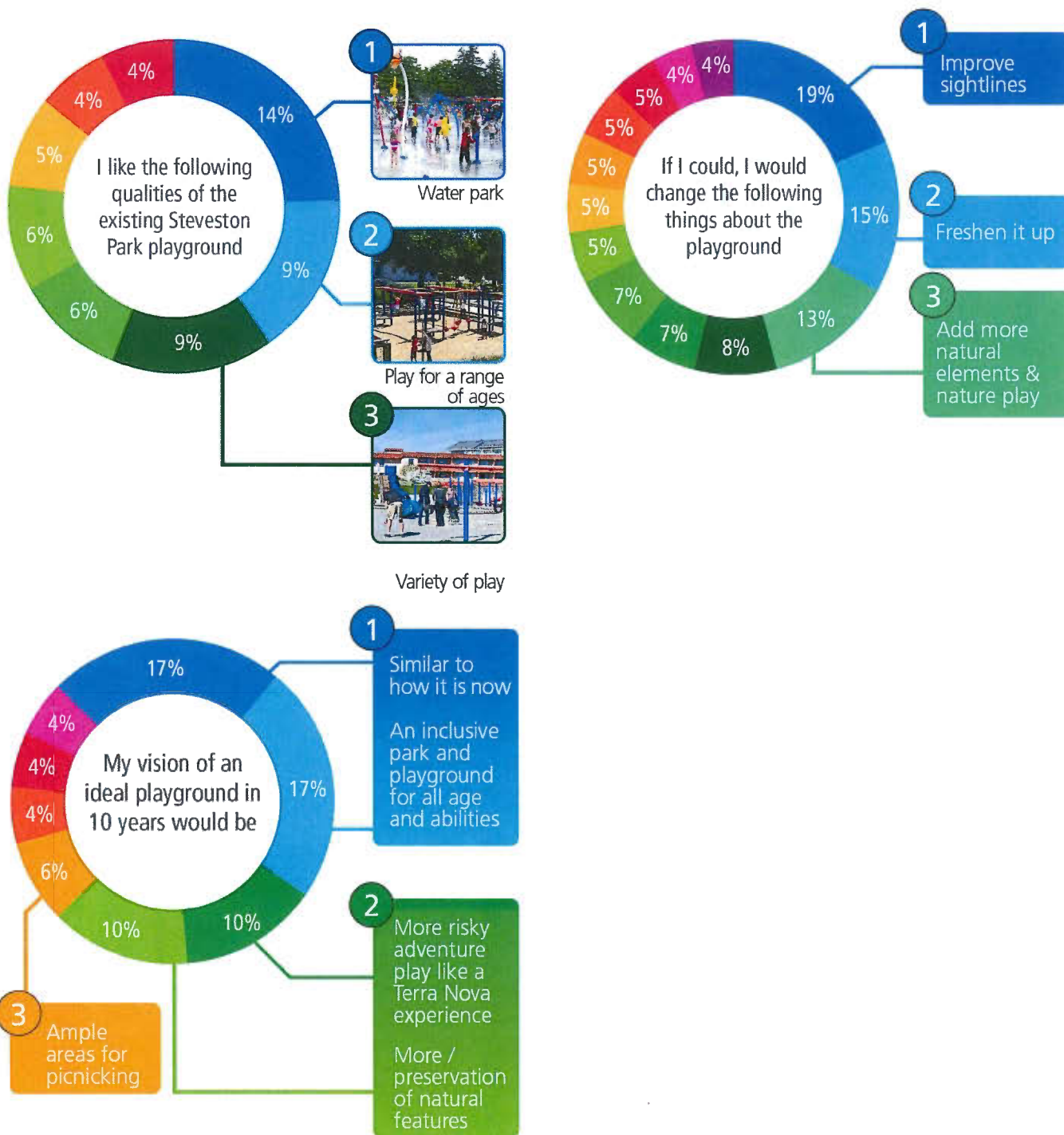
Digital versions of the public open house boards and an online version of the survey were posted on a Let's Talk Richmond webpage from Saturday, March 26, 2016, until Sunday, April 10, 2016, and was promoted on social media including Facebook and Twitter.

The webpage received a total of 332 visitors and 75 surveys were completed online. Meaningful insight into the community's opinions about Steveston Community Park playground's existing conditions and potential for its future renewal was gained.

Community Engagement Results

The input received via the phase one workshops, open house and Let's Talk Richmond webpage were summarized and key findings were identified. Below is a sampling from the summary of the results from the various activities the community was invited to participate in and responses to questions posed.

Select Summary of Results (for the complete summary, see Attachment 4):



Key Findings:

- | | |
|--|---|
| <p>A) Valued aspects of the existing playground:</p> <ul style="list-style-type: none"> a. The variety of play offered for a range of age groups b. The 3 favourite pieces of existing equipment within the playground are: <ul style="list-style-type: none"> i. The Big Blue Slide ii. The swings iii. The train | <p>B) The top concerns about the existing playground are:</p> <ul style="list-style-type: none"> a. Sightlines b. Maintenance / replacement of some of the playground equipment and surfacing <p>C) The community would like to see in their future playground:</p> <ul style="list-style-type: none"> a. A continuation of the variety of play and activities currently offered b. More risky adventure play c. More natural features |
|--|---|

Phase Two: Development of Design Guidelines and Concept Plan Options

Design guidelines and two concept plan options were developed based on the results from the phase one site analysis and community engagement process. The design guidelines build on the Steveston Community Park playground’s existing strengths, address community concerns and look forward to imagine how the playground may be renewed in response to shifting and expanding community needs.

Below are the Phase Two Design Guidelines:

- Maintain and expand on the diversity of play opportunities and activities that the park and playground currently offer;
- Retain the most valued components of the playground, which are the big blue slide, the swings and the train;
- Improve sightlines across the playground;
- Provide more challenging adventure play;
- Include more nature play and natural features;
- Offer play for all by including universally accessible activities and surfacing; and
- Celebrate the history of Steveston Village.

The concept plan options titled “Concept Trawler” and “Concept Climber” (Attachment 5) are based on the design guidelines and phase one community engagement process. The main difference between the two is that “Concept Trawler” shows the iconic trawler structure being retained but modified to improve sightlines, which was a major concern from the community, while “Concept Climber” shows the trawler being removed and replaced with adventure play elements with minimal footprints in order to further improve sightlines.

Phase Two: Community Engagement

Public Open House

City Parks staff hosted a drop-in style public open house on July 1, 2016, adjacent to the Steveston Community Park playground as part of the Steveston Salmon Festival. The public open house was formatted to receive feedback on the two concept plan options towards identification and development of a preferred concept plan. The two concept plan options and background information were made available on display boards (Attachment 6). It was a busy day with approximately 300 visitors. City staff and volunteers received many inquiries about the process and valuable comments about the concept plans.

Participants were invited to provide feedback in several different ways including voting on their favourite potential future playground elements and by completing a survey (Attachment 7). The survey questions were formatted to gain insight into which aspects of each concept plan, such as playground surfacing, the size of the sand play area and whether or not the iconic trawler should be retained or replaced, were most supported.

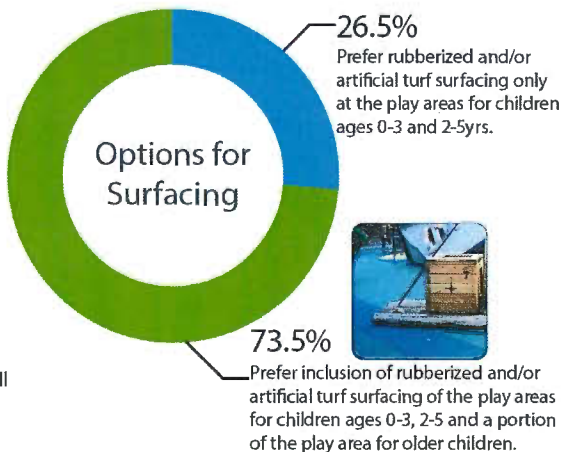
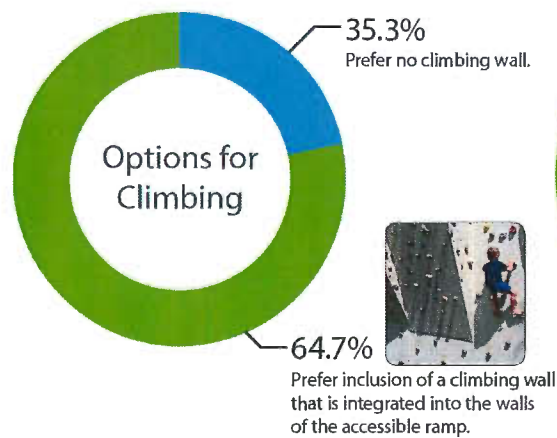
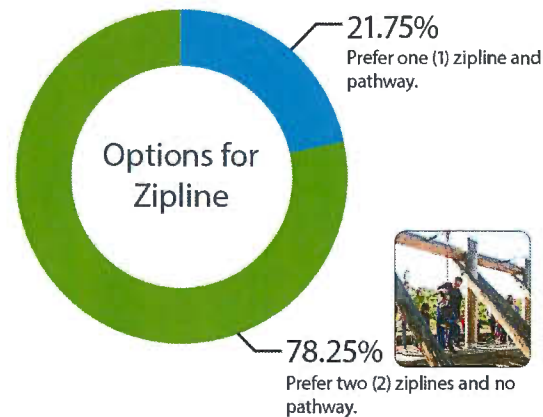
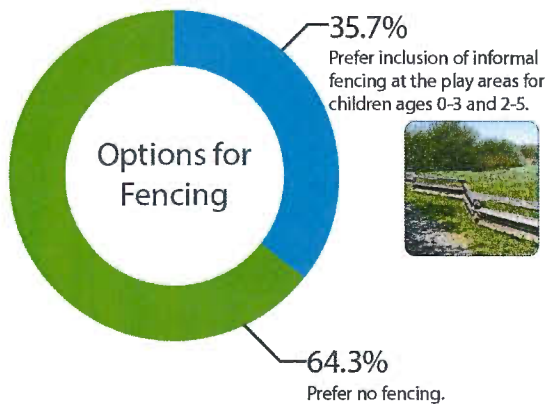
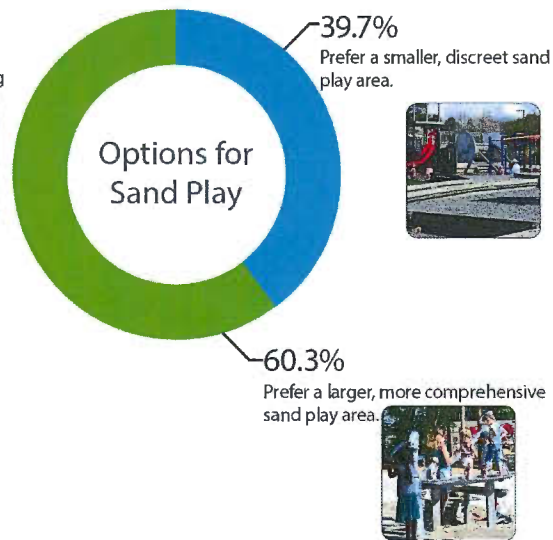
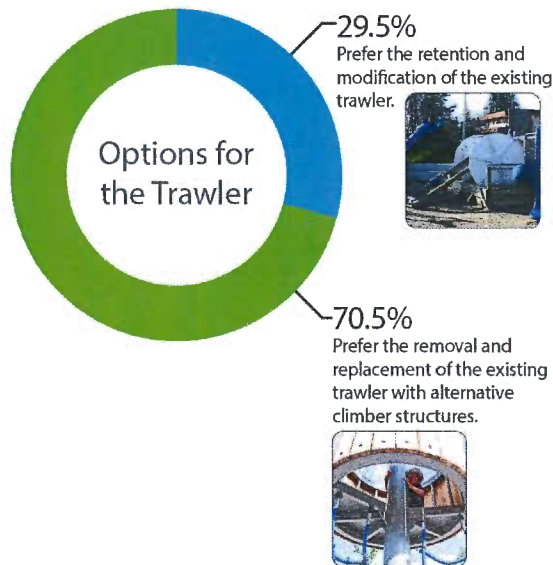
Let's Talk Richmond

The phase two public open house was also supplemented by Let's Talk Richmond. Digital versions of the open house boards and an online version of the survey were posted from Friday, July 1, 2016, until Sunday, July 17, 2016. The phase two Let's Talk Richmond webpage was also promoted on social media including Facebook and Twitter.

The webpage received a total of 264 visitors and a total of 71 surveys were completed in person and online. Insightful and decisive feedback was received and provided clear direction for the development of the preferred concept plan.

Community Engagement Results

Feedback received via the phase two open houses and Let's Talk Richmond webpage was analyzed (Attachment 8). Below is a summary of the results:



Steveston Community Park Playground Renewal Preferred Concept Plan

The Concept Plan (Attachment 1) includes the favoured elements from each of the concept plan options and addresses general comments and concerns received from the community. It features distinct preschool, school-aged and adventure play areas for preteens and young teenagers. Each playground area draws inspiration from Steveston Village's history. For example, a farm village, fisherman's wharf and salmon run adventure themed play areas are included. The concept plan also has a focus on inclusive play for all children and elements that are wheelchair accessible are integrated throughout. The concept plan will guide future renewal of the Steveston Community Park playground and can be adjusted as required in response to the Steveston Community Facility Replacement Project.

The Concept Plan was presented to, and received support from, the Steveston Community Society at their regularly scheduled board meeting on September 20, 2016.

Steveston Community Facility Replacement Projects

Planning for the replacement of the existing Steveston Community Centre and Library is currently underway. A request for proposals has been issued to commence the planning for the replacement of the Steveston Community Centre. Staff will ensure alignment between the Steveston Community Park Playground Renewal Preferred Concept Plan and the Steveston Community Facility Replacement Project planning. Council's endorsement of the proposed Steveston Community Park Playground renewal preferred concept plan will secure the site for future playground development.

Upon completion of the Steveston Community Facility Replacement Project planning process, staff will proceed with detailed design for the Steveston Community Park playground and develop Capital cost estimates for consideration as part of the future Capital budget. The Steveston Community Society has generously offered, as per the report to Council titled "Steveston Community Society Contribution to Steveston Community Park Playground Renewal," dated January 9, 2015, from the Senior Manager, Parks, to contribute 50 per cent of the detailed playground design costs up to \$40,000 and is looking forward to advancing community fundraising efforts.

Next Steps

Once the Steveston Community Facility Replacement Project has advanced, a review of the Concept Plan can be done to ensure that the future building and playground are complementary. Planning for the Steveston Community Facility Replacement Project is scheduled to commence in the Spring of 2017. At that time, staff will report to Council on the revised concept plan and next steps for the Steveston Community Park playground renewal process. Depending on the outcome of the Steveston Community Facility Replacement Project, the next steps could entail:

1. Proceeding with detailed playground design and costing; or
2. Revisiting the concept plan so that it is co-ordinated with the proposed future Steveston Community Centre.

Financial Impact

None.

Conclusion

Due to its highly prominent and accessible location within the historic Steveston Village, the Steveston Community Park playground attracts visitors and tourists from across Richmond and beyond and consequently functions as a destination playground. The Steveston Community Park playground renewal process provides an opportunity to take a holistic approach to planning its future evolution. Further planning for the playground will be done in the context of the Steveston Community Facility Replacement Project and the Steveston Community Park Playground Renewal Preferred Concept Plan will be adjusted, as required.

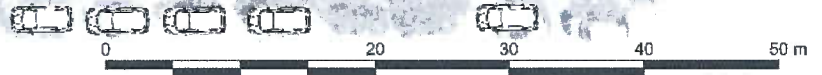


Miriam Plishka, BCSLA, CSLA
Park Planner
(604-233-3310)

- Att. 1: Steveston Community Park Playground Renewal Preferred Concept Plan
- 2: Phase One Public Open House Boards
- 3: Phase One Survey
- 4: Phase One Community Engagement Results
- 5: Steveston Community Park Playground Renewal Concept Plan Options
- 6: Phase Two Public Open House Boards
- 7: Phase Two Survey
- 8: Phase Two Community Engagement Results



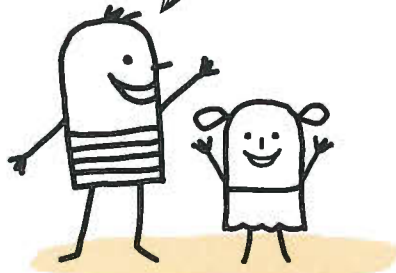
MONOTON STREET



LEGEND

- | | | | |
|--|--|--|--------------------------------------|
| 01 SAND PLAY AREA WITH RAISED SAND BEDS | 07 EXISTING RELOCATED TEETER TOTTER | 13 FISHING BOAT WITH NEW CLIMBING NET AND DRUM AND CAPTAIN'S WHEEL FROM EXISTING TRAWLER | 19 NET BASKET SPINNER |
| 02 TRAIN STATION WITH SLIDE | 08 EXISTING TRAIN | 14 IN-GROUND TRAMPOLINE | 20 WIDENED BOARDWALK |
| 03 FARM VILLAGE WITH PLAY PANELS | 09 TRAIN TRACK PATTERN IN RUBBERIZED SURFACING | 15 EXISTING RELOCATED RING SPINNER | 21 HANG OUT HAMMOCK |
| 04 RUBBERIZED SURFACE WITH HISTORIC RICHMOND FARM PATTERNING | 10 ACCESSIBLE BOARDWALK - FLUSH WITH ADJACENT SURFACING | 16 EXISTING RELOCATED SPICA SPINNER | 22 BOARDWALK EXTENSION |
| 05 BRIDGE OVER SAND PLAY AREA | 11 SAUCER SWING | 17 PIER PILE PARKOUR CIRCUIT | 23 SHIP WRECK ADVENTURE PLAY |
| 06 TODDLER SWINGS WITH INTERGENERATIONAL SEAT | 12 RIVER PATTERN IN RUBBERIZED SURFACING - SLOPING DOWN TO ENGINEERED WOOD FIBRE SURFACING | 18 ENGINEERED WOOD FIBRE SURFACING | 24 EXISTING MOUND AND BIG BLUE SLIDE |
| | | | 25 WIND SOCKS |
| | | | 26 EXISTING MODIFIED BRIDGE |

Welcome to reIMAGINE Steveston Playground



The City of Richmond Parks Department is continually working to improve the quality of play experiences throughout the city. City Parks staff, in collaboration with the Steveston Community Society, are working towards the development of a concept plan for the future renewal of the Steveston Community Park playground. This open house is the first step in a phased public consultation process, and is intended to gather community input that will be used to develop concept options.

Where are we in the process?

- This is the first public open house and start of the Steveston Community park playground renewal planning process

WE ARE HERE



Next Steps

- Community input gathered at this open house will be used to inform the development of concept options
- The concept options will be presented to the public at a second open house in May, 2016
- Feedback gathered at the second open house will be used in the development of a preferred concept plan
- The preferred concept plan will be presented to the public at a third open house on July 1st, 2016 at the Steveston Salmon Festival
- A report and presentation will be made to Council of the preferred concept and supporting material for their approval in September, 2016

INTRODUCTION

CITY OF RICHMOND, PARKS DEPARTMENT • www.richmond.ca/parksprojects • email: parks@richmond.ca



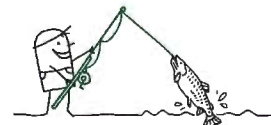
Site Context

Steveston Community Park Playground is situated within Steveston Village, which has strong historical ties to the fishing and canning industries. Many components of the playground, such as the trawler, relate to the area's past and reinforce its character. Below is a brief timeline of Steveston Village post European settlement, in order to provide context for the site and area.

<p>1877</p> <p>Marionh Steves, Steveston Village's namesake, settles in the area.</p> 	<p>late 1800's – mid 1900's</p> <p>By the 1890's, with 45 canneries in the area, fishing and canning were the largest industries in Steveston.</p>  <p>The fishing and canning industries attracted large numbers of Japanese, Chinese, First Nations, and European workers every summer, many of whom settled here.</p> <p>The fishing and canning industries sparked the development of a significant boatbuilding and shipbuilding industry, as canned salmon from Steveston was shipped around the world.</p>	<p>1994</p> <p>In 1994, the Gulf of Georgia Cannery building was reopened as a National Historic Site of Canada and received an award for Canada's best historic site.</p> 
<p>1889</p> <p>Steves' son, William Herbert, developed the townsite, which officially became named Steveston at that time.</p> 	<p>1894</p> <p>The Gulf of Georgia cannery was built and was the largest cannery in British Columbia at that time.</p> 	<p>mid to late 1900's</p> <p>After WWII, Steveston developed into a residential community. In the late part of the 1900's, the canning industry slowly declined, and came to a close in the 1990's. The Steveston community continues to nurture its heritage character and its scenic waterfront making it one of the top tourist attractions in the Greater Vancouver Regional District.</p> 

FUN FACT:









Salmon canning was so prolific in Steveston in the late 1800's that the area became known as "Salmonopolis".



Site History

Steveston playground has a long and rich history almost as interesting as Steveston Village. Since the first playground was built on the site in 1942, it has been redesigned, replaced, and retrofitted several times. Below is a brief history of the playground to date.



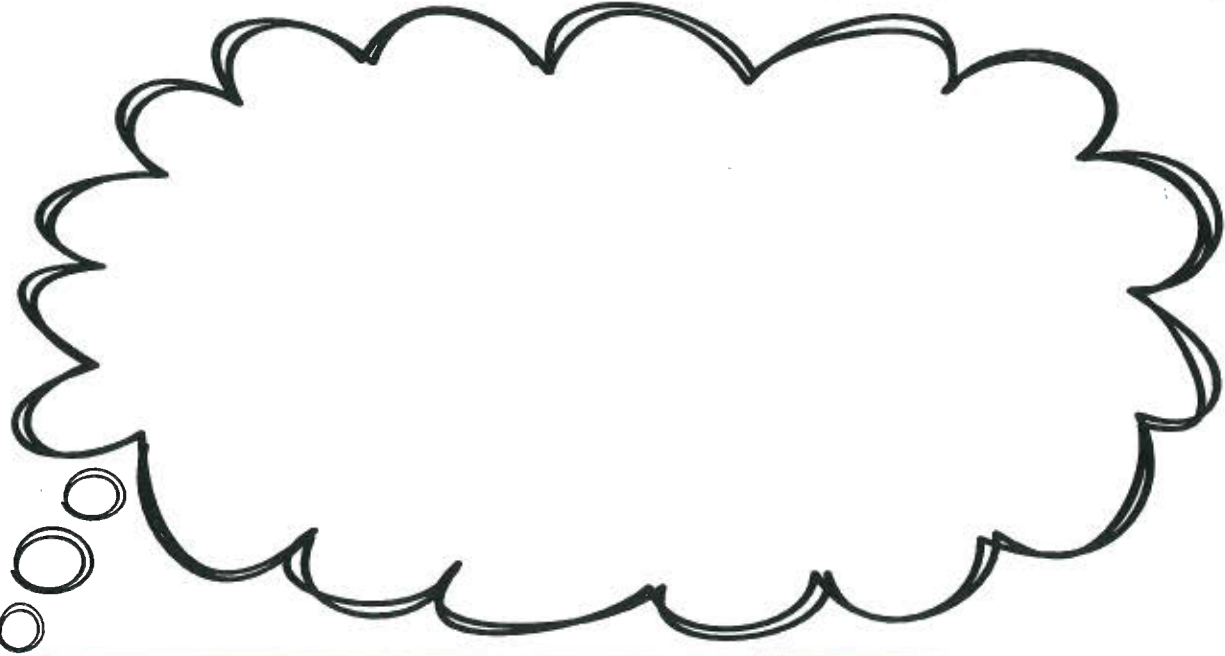
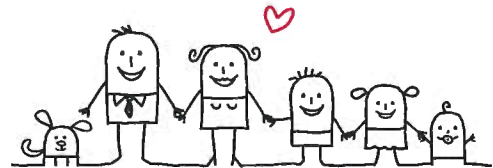
<p>1942</p> <p>The Steveston Community Society purchased the site and donated it to the City, at which point the first playground was built.</p> 	<p>1980s</p> <p>In the late 1980's to early 1990's, the playground was redesigned and elements such as the trowler and a boat were added, establishing a fishing village theme for the playground, connecting it to Steveston's history.</p> 	<p>2003</p> <p>The playground was renovated and expanded. Separate preschool and school aged areas were added. Existing structures that were retained, such as the iconic trowler, received safety upgrades. At this point, accessible boardwalks were added.</p> 	<p>2014</p> <p>Extensive structural reconstruction was performed on the slide mound.</p> 
<p>1970s</p> <p>In the 1970's the playground was upgraded and an outdoor pool was added.</p> 	<p>2000</p> <p><i>Steveston Park - Long-Term Vision</i></p>  <p>An overall vision was developed for the park.</p>	<p>2006</p> <p>In 2006, the waterpark was built.</p> 	<p>2016</p> <p>TODAY— March, 2016, the start of a public consultation process towards the development of a playground renewal concept plan initiated by a contribution made by the Steveston Community Society.</p> 

HISTORY

CITY OF RICHMOND, PARKS DEPARTMENT • www.richmond.ca/parks/projects • email: parks@richmond.ca

Share your Memories

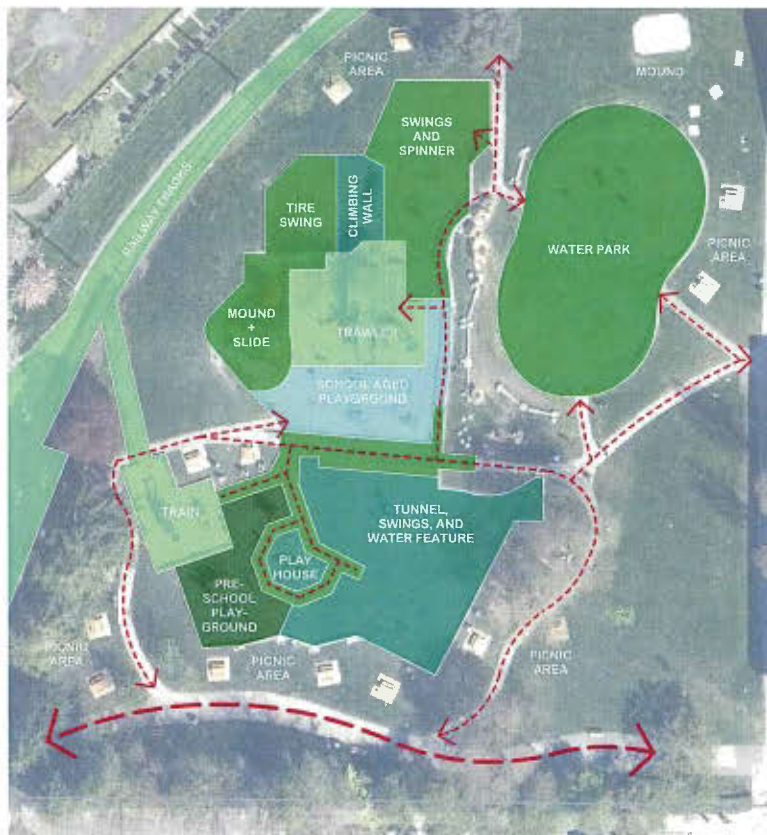
Generations of Richmond residents have been playing at the Steveston Community Park playground since the first one was built in 1942. People who played at the playground as children, may now be adults bringing their children or grandchildren here to play. If you have any memories or stories about the playground that you would like to share, please write them on a sticky note and place them on this board.



Current Conditions

The Steveston playground was built and altered over time, and because of this, some playground equipment has received more wear and tear than others. As a result, some equipment may need to be replaced or upgraded sooner than others. The adjacent map provides an overview of the current conditions of the playground equipment.

If you have any thoughts about the existing playground that you would like to share, please write them on a sticky note and place them on this board.



- LEGEND**
- Primary Pedestrian Circulation
 - - - Secondary Pedestrian Circulation
 - Areas that have been upgraded recently and that are still in good condition
 - Areas that are reaching the end of their life cycle and are in need of near future replacement
 - Iconic and historic elements
 - Potentially underutilized areas
 - Areas still in good condition. Near future replacement will be dependent on public input.

CURRENT CONDITIONS



CITY OF RICHMOND, PARKS DEPARTMENT • www.richmond.ca/parksprojects • email: parks@richmond.ca

reIMAGINE Character

Playgrounds can span a wide range of character styles from very natural to very urban, and everything in between.

Some of the most well loved playgrounds reflect their context, reinforcing the character and history of the community that they are located within. Below are a range of images showing many different styles of playgrounds. Place sticker dots on images that you think reflect the Steveston Community and that are most appropriate for the character of the future playground renewal.



reIMAGINE CHARACTER: Play PRCS 89 Types



CITY OF RICHMOND, PARKS DEPARTMENT • www.richmond.ca/parksprojects • email: parks@richmond.ca

reIMAGINE Play

From active adventure play to quiet play, park playgrounds can offer a range of experiences. Steveston Community park playground currently offers a diversity of activities for children of different ages. Is there anything that you would like to see added or that you would like to see more of? Place sticker dots on images of activities or elements that you would like added or increased in the future renewal of the Steveston Community Park playground



ACTIVE



SOCIAL CREATIVE



reIMAGINE PLAY: Playground Elements



CITY OF RICHMOND, PARKS DEPARTMENT • www.richmond.ca/parksprojects • email: parks@richmond.ca

reIMAGINE Steveston Community Park Playground Survey

Thank-you for attending the reIMAGINE Steveston Community Park Playground Open House. Your ideas and comments are important as we begin the planning process for the future of the Steveston Park Playground.

Please take a few minutes to complete this survey before leaving today. Alternatively you can complete the survey online at LetsTalkRichmond.ca. **The deadline to submit your survey is midnight, Sunday, April 10, 2016.**

Input received will contribute to the development of concept plan options, which will be distilled into a preferred concept plan for City Council review and approval.

Here is my feedback:

1. I like the following qualities of the existing Steveston Park Playground:

2. If I could, I would change the following things about the playground:

3. My vision of an ideal Steveston Park Playground in 10 years is:

4. My other comments / questions are:

A little about me:

My postal code is: _____

I live in Richmond: Yes ___ No ___

I visit / use Steveston Park Playground this often: About once a year ___ About once a month ___ About once a week ___ More than once a week ___

How did you hear about this Open House (check all that apply)?

- Newspaper Advertisement ____
 - If yes: which paper: Richmond News ____ or Ming Pao ____
- Newspaper story
 - If yes: which paper: _____
- City of Richmond website (Richmond.ca) ____
- LetsTalkRichmond.ca website ____
- Twitter ____
- Facebook ____
- Word of Mouth ____
- Came across it unexpectedly ____
- Other ____

Other ways to provide input and stay up to date on this project:

1. Complete the survey online and / or learn about project updates at:
www.letstalkrichmond.ca
2. Drop off or mail your completed survey or other comments to:
City of Richmond
Parks Planning, Community Services Department
5599 Lynas Lane, Richmond, BC, V7V 5B2

Thank-you for your time and feedback.

Steveston Playground: Phase One Public Engagement Results

SPRING BREAK DESIGN WORKSHOPS

City staff held **two design workshops with children** at the Steveston Community Centre Spring Break camps. One workshop was with **6-8 year olds**, the other was with **8-12 year olds**. Around a dozen children participated in each workshop.

The workshops were formatted so that City staff could learn what existing playground equipment the children liked and disliked and what their vision of an ideal playground is. For the first activity, children were asked to write their opinions about the existing playground equipment on sticky notes and place them on an aerial map of the playground. For the second activity, children were provided with play dough to create their ideal playground with, and then asked to share their ideas with the group.

Questions asked...



My favorite existing playground elements are...



My ideal playground would include...

Workshop Results: 6-8 yrs



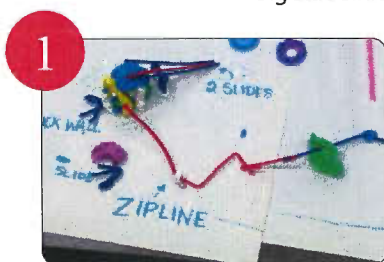
Big Blue Slide



Big Swings



Big Playground



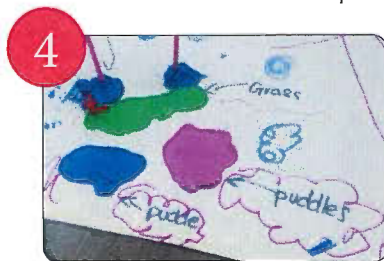
Zipline



Monkey Bars



Swings



Natural elements

Workshop Results: 8-12 yrs

A



Big Blue Slide



Trawler



big Swings

B



Zipline



Challenging Climbing Equipment



Lots of swings



REALLY big slide

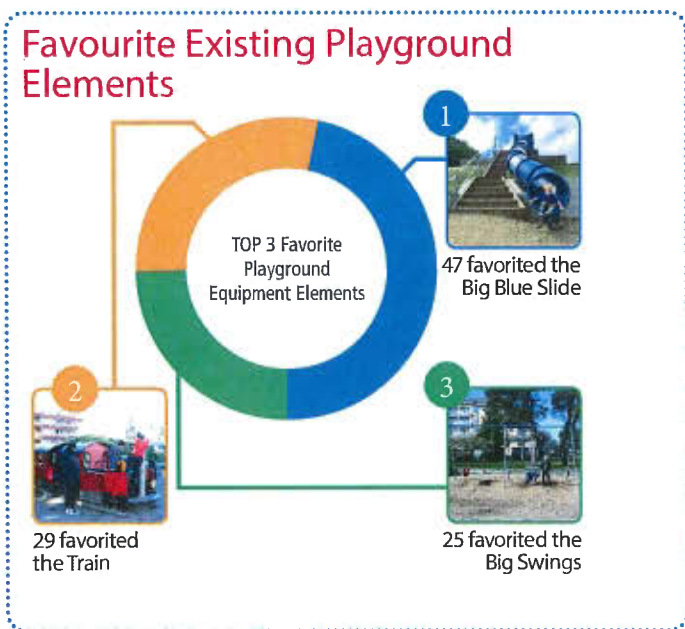
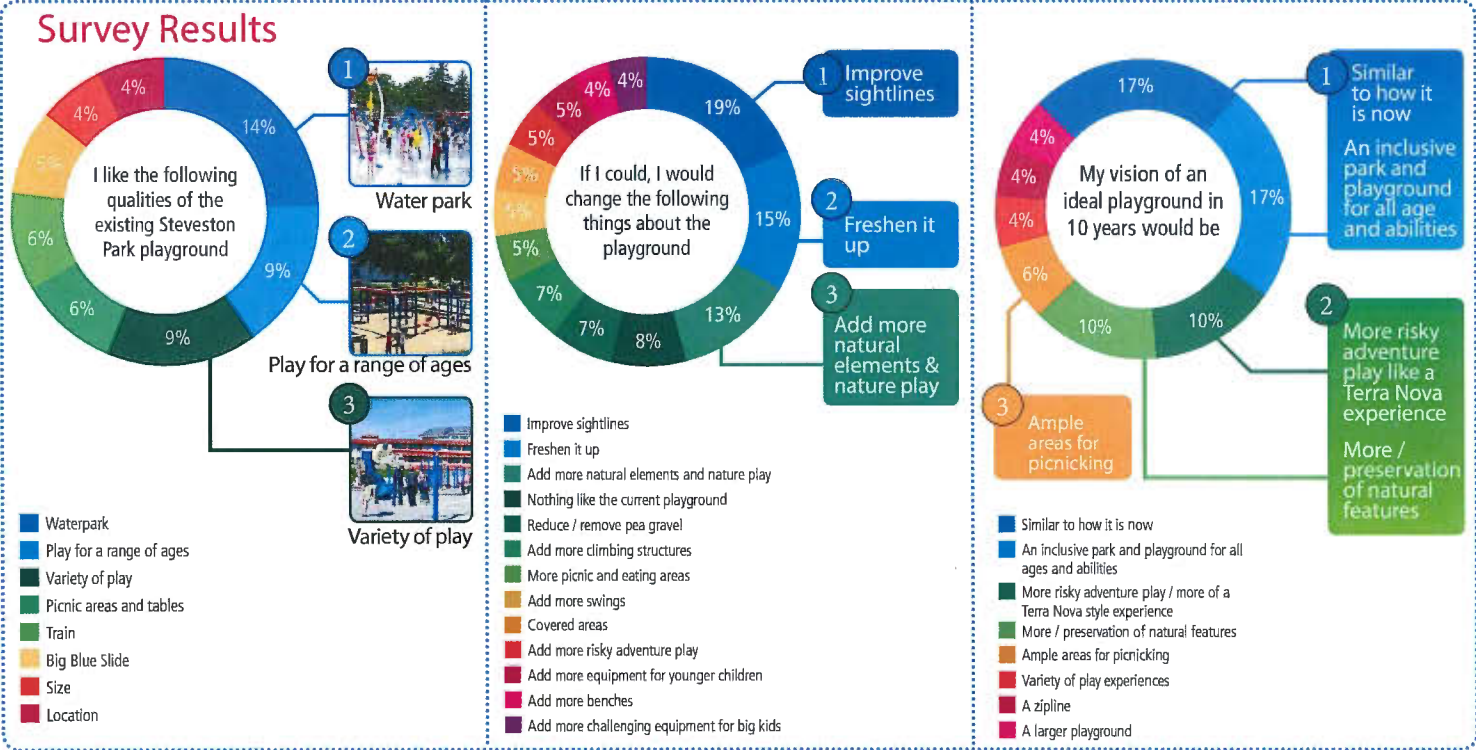
PUBLIC OPEN HOUSE + ONLINE OUTREACH

City staff held a public open house on March 26th, 2016 adjacent to the playground. It was well attended with approximately 160 people participating. The majority of people were excited about the process.

The drop-in style open house was formatted to gain insight into the community's opinions about the current playground and their ideas for the future playground design. There were display boards with background information that explained the process, provided a brief history of Steveston Village and the playground, and a board that included an overview of the current conditions of the playground.

Quick Facts:

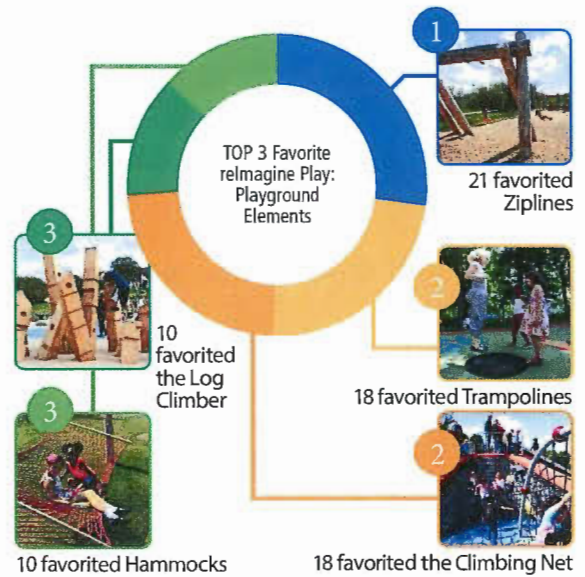
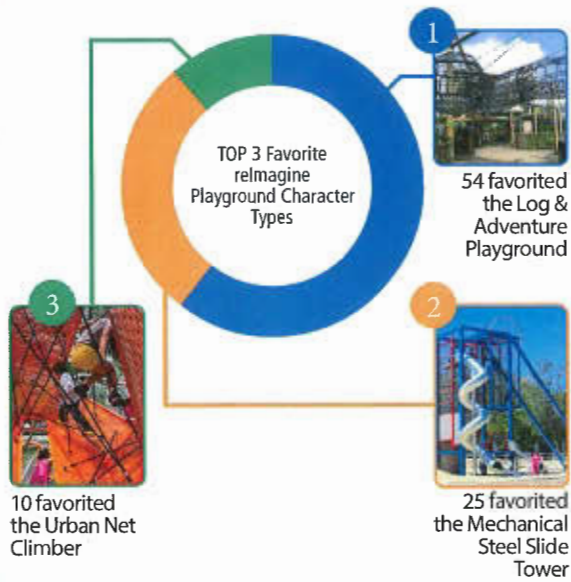
- Approx. 160 people attended the open house
- 86 surveys were completed



Chalk Thoughts



Favourite Future Playground Elements



Memory Corner

I remember...

“family time at the wading pool”

“a steep orange slide and bouncy animals (duck)”

“meeting up with friends, with kids the same age, and having instant play dates”

“the BIG swings”

Key Findings:

A) Valued aspects of the existing playground:

- a. The variety of play offered for a range of age groups
- b. The 3 favourite pieces of existing equipment within the playground are:
 - i. The Big Blue Slide
 - ii. The swings
 - iii. The train

B) Top concerns about the existing playground are:

- a. Sightlines
- b. Maintenance / replacement of some of the playground equipment and surfacing

C) The community would like to see in their future playground:

- a. A continuation of the variety of play and activities currently offered
- b. More risky adventure play
- c. More natural features



- LEGEND**
- 1 SAND PLAY AREA WITH WATER TROUGH AND RAISED SAND BEDS
 - 2 TRAIN STATION WITH SLIDE
 - 3 FARM VILLAGE WITH PLAY PANELS
 - 4 RUBBERIZED SURFACE WITH HISTORIC RICHMOND FARM PATTERNS
 - 5 OVER SIZE FARM STATION IN RUBBERIZED SURFACE
 - 6 FOODSIE GARAGE
 - 7 CROCKERY YETI POTTY
 - 8 EXISTING FRANK
 - 9 TRAIN TRACK PATTERNS IN RUBBERIZED SURFACE
 - 10 ACCESSIBLE BOARDWALK - FLUSH WITH ADJACENT SURFACING
 - 11 RIVER HARBOUR PATTERN IN RUBBERIZED SURFACING - SLIDING DOWN TO ENTAILER IN AREA 18
 - 12 FISHING BOAT WITH NEW CLIMBING NET, NEW DRUM AND CAPTAIN'S WHEEL
 - 13 IN-GROUND TRANPOUNE
 - 14 EXISTING RELOCATED SPIN SPINNER
 - 15 EXISTING RELOCATED SPIN SPINNER
 - 16 BODY PLAY ORGY
 - 17 ENGINEERED WOOD FIBRE SURFACING
 - 18 NET BASKET SPINNER
 - 19 WIDENED BOARDWALK
 - 20 HANG OUT HAMMOCK
 - 21 SLOPED BOARDWALK
 - 22 SHIP WRECK LOG CLIMBER WITH NETS AND MONKEY BARS
 - 23 EXISTING ROUND AND BIG BLUE SLIDE
 - 24 WIND SCENE
 - 25 EXISTING MODIFIED BRIDGE
 - 26 EXISTING MODIFIED TRAWLER WITH SLIDE, NET, EXHAUSTER AND SHIMMY WHEELS
 - 27 LOG PILE ADVENTURE PLAY
 - 28 SLOWLY SALAMON CLIMBER - SEAT ELEMENT
 - 29 PIER BALANCING LINES
 - 30 BIG SWINGS WITH INCLUSIVE SEAT
 - 31 APRIL
 - 32 NEW WOODEN ACCESSIBLE PATHWAY
 - 33 EXISTING PATHWAY
 - 34 TALL GRASS PLANTING
 - 35 EXISTING SHRUB PLANTING
 - 36 ADDITIONAL SHADE TREES
 - 37 LAWN AREAS WITH PING PONG TABLES
 - 38 ACCESSIBLE RAMP WITH INTEGRATED CLIMBING WALL
 - 39 CIRCLE PING PONG AREA WITH SHADE STRUCTURE
 - 40 SPLIT RAIL FENCE

The main differences that set **Concept Trawler** apart from **Concept Climber** are that:

- The iconic trawler is retained, but modified in order to improve sightlines
- A smaller sand play area is provided
- There are less new adventure play elements in order to accommodate the trawler
- Some of the playground elements are in different locations; and
- The design forms are more curvilinear

Please fill out a survey to let us know your thoughts on the current option plans.

Inspirational Imagery



CONCEPT TRAWLER

CITY OF RICHMOND, PARKS DEPARTMENT • www.richmond.ca/parks/projects • email: parks@richmond.ca



- LEGEND**
- 1 SAND PLAY AREA WITH WATER TROUGH, COVER, SEAT, AND RAISED SAND BEDS
 - 2 TRAIN STATION WITH SLIDE
 - 3 FARM VILLAGE WITH PLAY PANELS
 - 4 RUBBERIZED SURFACE WITH HISTORIC RICHMOND FARM PATTERNS
 - 5 SPIDER OVER SAND PLAY AREA
 - 6 LOCAL BIRDS
 - 7 EXISTING RELOCATED YETI POTTY
 - 8 EXISTING FRANK
 - 9 TRAIN TRACK PATTERNS IN RUBBERIZED SURFACING
 - 10 ACCESSIBLE BOARDWALK - FLUSH WITH ADJACENT SURFACING
 - 11 SAUCER SWING
 - 12 RIVER HARBOUR PATTERN IN RUBBERIZED SURFACING - SLIDING DOWN TO ENTAILER IN AREA 18
 - 13 FISHING BOAT WITH NEW CLIMBING NET AND DRUM AND CAPTAIN'S WHEEL
 - 14 IN-GROUND TRANPOUNE
 - 15 EXISTING RELOCATED SPIN SPINNER
 - 16 EXISTING RELOCATED SPIN SPINNER
 - 17 BODY PLAY ORGY
 - 18 ENGINEERED WOOD FIBRE SURFACING
 - 19 NET BASKET SPINNER
 - 20 WIDENED BOARDWALK
 - 21 HANG OUT HAMMOCK
 - 22 SHIP WRECK ADVENTURE PLAY
 - 23 EXISTING ROUND AND BIG BLUE SLIDE
 - 24 WIND SCENE
 - 25 EXISTING MODIFIED BRIDGE
 - 26 CROWS NEST ADVENTURE PLAY WITH NETS, LADDERS, BRIDGES AND BIG SLIDE
 - 27 LOG PILE CLIMBER WITH NETS AND MONKEY BARS
 - 28 SLOWLY SALAMON CLIMBER - SEAT ELEMENT
 - 29 PIER BALANCING LOOP
 - 30 ACCESSIBLE RAMP
 - 31 BIG SWINGS WITH INCLUSIVE SEAT
 - 32 CUPLINE
 - 33 WIDENED ACCESSIBLE PATHWAY
 - 34 EXISTING PATHWAY
 - 35 EXISTING SHRUB PLANTING
 - 36 TALL GRASS PLANTING
 - 37 ADDITIONAL SHADE TREES
 - 38 LAWN AREAS WITH PING PONG TABLES
 - 39 CIRCLE PING PONG AREA WITH SHADE STRUCTURE
 - 40 SEA PATTERNS IN RUBBERIZED SURFACING SLIDING DOWN ON EITHER SIDE TO ENGINEERED WOOD FIBRE SURFACING

The main elements that set **Concept Climber** apart from **Concept Trawler** are that:

- The iconic trawler is removed and replaced with new adventure play elements with smaller footprints in order to improve sightlines throughout the playground
- A larger sand play area is provided
- There are more new adventure play elements in place of the trawler
- Some of the playground elements are in different locations; and
- The design forms are more angular

Please fill out a survey to let us know your thoughts on the current option plans.

Inspirational Imagery



CONCEPT CLIMBER

CITY OF RICHMOND, PARKS DEPARTMENT • www.richmond.ca/parks/projects • email: parks@richmond.ca



Phase Two Public Open House Boards

What we have heard so far...

During Phase One of the planning process, a series of community engagement events and workshops were held, including a public open house, online outreach via LetsTalkRichmond, design workshops, and meetings with local preschool teachers. These events and workshops were intended to gather feedback on the existing playground and input towards the future playground design. A summary of the Phase One public engagement is provided below.

SPRING BREAK DESIGN WORKSHOPS
 City staff held two design workshops with children at the Steveston Community Centre Spring Break camps. For the first activity, children were asked to write their opinions about the existing playground equipment on sticky notes and place them on an aerial map of the playground. For the second activity, children were provided with play dough to create their ideal playground, and then asked to share their ideas with the group. To the right is a summary of the input received at the workshops:

Workshop Results: 6-8 yrs
 My favorite existing playground equipment:
 A 1 2 3
 B 1 2 3 4

Workshop Results: 8-12 yrs
 A 1 2 3
 B 1 2 3 4

PUBLIC OPEN HOUSE AND ONLINE OUTREACH
 City staff invited community input at a drop-in style open house and through LetsTalkRichmond, which is the city's online public engagement platform. At the open house, the public was invited to provide feedback by completing a survey, voting on their favourite existing playground equipment (aka cupstuent), and on their favourite images of potential future playground elements (aka dotmocracy). Below and right are summaries of the input received at the open house and via LetsTalkRichmond:

Dotmocracy Results **Cupstuent Results**

Survey Results

- The following options of the existing Steveston Park playground:
- If I could, I would change the following things about the playground:
- My score of an ideal playground in 10 years would be:

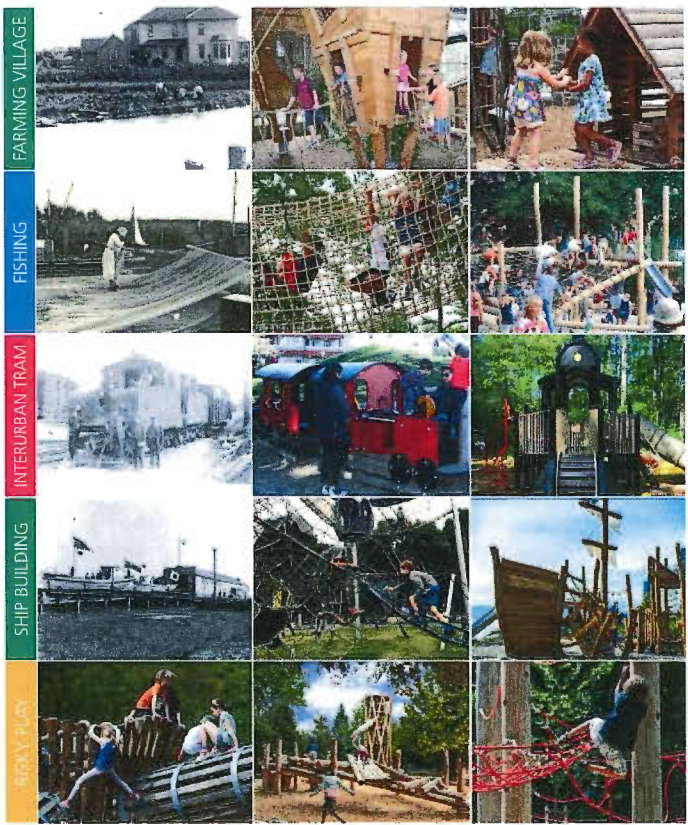
WHAT WE HAVE HEARD SO FAR...

The following guidelines are based on the input received so far, and were created to guide the development of the concept plans.

- Design Guidelines:**
- ☑ Maintain and expand on the diversity of play opportunities and activities that the park and playground currently offer
 - ☑ Improve sightlines across the playground
 - ☑ Provide more challenging adventure play
 - ☑ Include more nature play and natural features
 - ☑ Celebrate the history of site's context, Steveston Village
 - ☑ Offer play for all by including universally accessible activities and surfacing
 - ☑ Retain the most valued components of the playground, which are the big blue slide, the swings, and the train

Design Inspiration:
 The designs for both concept options draw inspiration from Steveston Village's farming, fishing, and boatbuilding history. Elements such as net and sockeye salmon climbers relate to the area's strong ties to the fishing industry, while inclusion of boat-like timber play structures recall the area's ship building past. The existing play train, which is included in both options, is reminiscent of the 1956 BC Electric interurban tram route. Playful patterning shown in the playground surfacing is inspired by Richmond's historic farming patterns, and the city's strong ties to the Fraser River. Overall, the design for both options set out to celebrate Richmond's and more specifically Steveston's, cultural and geographic history.

Risky Play:
 *Current research from UBC and the Child & Family Research Institute at BC Children's Hospital shows that risky adventure play has positive impacts on children's health and their capacity for creativity, socialization, and resilience. Playgrounds that offer more adventurous play allow children to learn about risk and test their physical limits in a somewhat controlled setting. Studies found that children who participated in activities such as climbing, jumping, rough and tumble play, and general exploration resulted in greater physical and social health. Based on this, and other studies, the City is introducing more risky adventure play in parks, for example, the Terra Nova Adventure Play Environment.
 *more information about the study can be learned at: <http://news.ubc.ca/2015/06/09/risky-outdoor-play-positively-impacts-childrens-health-ubc-study/>





**City of
Richmond**

Steveston Community Park Playground (PH 2) - Survey
Parks Department
5599 Lynas Lane, Richmond, BC V7C 5B2
www.richmond.ca

The City of Richmond invites the public to review and comment on concept plan options for the future renewal of the Steveston Community Park playground.

Currently there are two concept plan options: (1.) Option Trawler
(2.) Option Climber

Please review the project background information and two concept plans, then take a few minutes to complete this survey and send it back to the City by **Sunday, July 17, 2016**. The open house display boards and this survey are also available online at LetsTalkRichmond.ca.

Feedback received will inform the development of a preferred concept plan, which will be presented to City Council for approval.

1. The Trawler

There are two options being explored for the trawler:

Option Trawler: retains and modifies the existing trawler in order to open up sightlines across the playground. As shown on the plan, the changes include removing the ramps on the east side of the structure, reducing the length of the trawler platform, and lowering the drum. A new slide, shimmy poles, and climbing nets would be integrated into the structure.

Option Climber: removes the existing trawler in order to further open up sightlines across the playground. As shown, the trawler would be replaced with climbing structures reminiscent of crow's nests on ships, and would have a smaller footprint on the ground plane, allowing more open views.

- I prefer retention and modification of the existing trawler. (Option Trawler)
- I prefer removal and replacement of the existing trawler with alternative climbing structures. (Option Climber)

Comments: _____

2. Sand Play

There are two options being explored for the design of the sand play area:

Option Trawler: provides a smaller, discreet sand play area with a water trough and one accessible raised sand bed.

Option Climber: provides a larger sand play area with a water trough, digger, sieve, and two accessible raised beds. This sand area is around three times the size as the area shown in Option Trawler.

- I prefer a smaller, discreet sand play area. (Option Trawler)
- I prefer a larger, more comprehensive sand play area. (Option Climber)



Comments: _____

3. Fencing

There are two options being explored for fencing:

Option Trawler: includes informal split-rail fencing at the play areas for children ages 0-3 and 2-5.

Option Climber: does not include any fencing in or around the playground.

- I prefer inclusion of informal fencing at the play areas for children ages 0-3 and 2-5. (Option Trawler)
- I prefer no fencing. (Option Climber)

Comments: _____

4. Zipline

There are two options being explored for the zipline area:

Option Trawler: includes one (1) zipline with a pathway on the north side.

Option Climber: includes two (2) ziplines side-by-side, but does not include a pathway.

- I prefer one (1) zipline and a pathway. (Option Trawler)
- I prefer two (2) ziplines and no pathway. (Option Climber)

Comments: _____

5. Climbing Wall

There are two options being explored for a climbing wall:

Option Trawler: includes a climbing wall on the east and south facing walls of the accessible ramp.

Option Climber: does not include a climbing wall.

- I prefer inclusion of a climbing wall that is integrated into the walls of the accessible ramp. (Option Trawler)
- I prefer no climbing wall. (Option Climber)

Comments: _____

6. Surfacing

There are two options being explored for the extent of rubberized and / or artificial turf surfacing:

Option Trawler: includes rubberized and / or artificial turf surfacing at the play areas for children ages 0-3 and 2-5.

Option Climber: includes rubberized and / or artificial turf surfacing at the play areas for children ages 0-3, 2-5, and a portion of the play area for children 5-12.

- I prefer rubberized and / or artificial turf surfacing only at the play areas for children ages 0-3 and 2-5. (Option Trawler)
- I prefer inclusion of rubberized and / or artificial turf surfacing at the play areas for children ages 0-3, 2-5, and a portion of the play area for children 5-12. (Option Climber)

Comments: _____

General Comments and Questions

Other ideas or thoughts I would like to share about the Steveston Community Park playground future renewal design concepts are:

My postal code is: _____

My name is (optional): _____

My email address is (optional): _____

I heard about this public consultation process via (check all that apply):

- | | |
|---|--|
| <input type="checkbox"/> Newspaper story | <input type="checkbox"/> Email from LetsTalkRichmond |
| <input type="checkbox"/> Newspaper advertisement: Richmond News | <input type="checkbox"/> Facebook |
| <input type="checkbox"/> Newspaper advertisement: Ming Pao | <input type="checkbox"/> Twitter |
| <input type="checkbox"/> City of Richmond website: richmond.ca | <input type="checkbox"/> Word of mouth |
| <input type="checkbox"/> LetsTalkRichmond.ca website | <input type="checkbox"/> Saw poster in City facility |

Thank you for your time and feedback.

Phase Two Community Engagement Results

Public Open House + Online Outreach

City staff held an additional **public open house** on July 1st, 2016 adjacent to the playground as part of the Steveston Salmon Festival. It was a busy day with 300+ people visiting the open house tents. City staff and volunteers received many inquiries about the process and valuable comments about the concept plans.

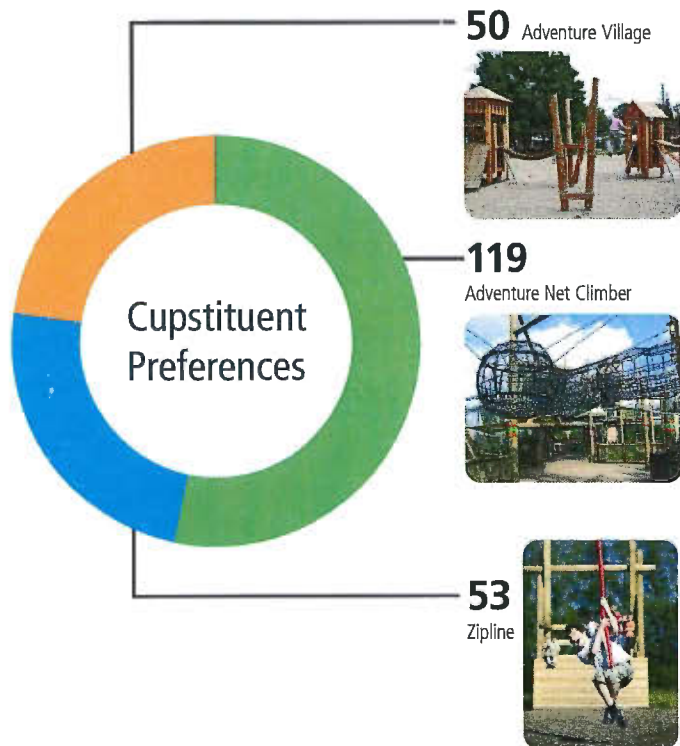
The drop-in style open house was formatted to gain feedback on the two concept plans that were generated from the input received from the Phase One public engagement process. There were display boards with background information that explained the process, provided a brief history of Steveston Village, and boards that contained the two concept plans.

Participants were invited to provide feedback via a game and / or survey. For the game, people were asked to vote on their favourite playground equipment by placing smiley faces in cups that represented pieces of potential future playground equipment. This was popular with young children (and kids-at-heart) as it was easy to understand and participate in. The survey included several questions ranging from whether or not to retain the existing trawler to what types of surfacing should be included in the future playground. Just over 190 people participated in the Cupsttuent game and seventy-one surveys were completed in person and online.

Quick Facts:

- 300+ people attended the open house
- 71 surveys were completed
- 180 people voted on the playground equipment that they want to see in the future playground

Favourite Future Playground Elements



Survey Results

