



# City of Richmond

## Report to Committee

---

**To:** Parks, Recreation and Cultural Services Committee      **Date:** May 6, 2015  
**From:** Mike Redpath  
Senior Manager, Parks      **File:** 06-2345-20-GCIT1/Vol  
01  
**Re:** **Garden City Lands 2015 Update**

---

### Staff Recommendation

That the staff report titled "Garden City Lands 2015 Update" dated May 6, 2015, from the Senior Manager, Parks be received for information.

Mike Redpath  
Senior Manager, Parks  
(604-247-4942)

Att. 2

REPORT CONCURRENCE	
CONCURRENCE OF GENERAL MANAGER 	
REVIEWED BY STAFF REPORT / AGENDA REVIEW SUBCOMMITTEE	INITIALS: 
APPROVED BY CAO 	

PRCS - 111

## Staff Report

### Origin

At the June 9, 2014 Council Meeting, Council adopted on consent the following recommendation:

“That the Garden City Lands Legacy Landscape Plan as detailed, and attached to the staff report titled “Garden City Lands Legacy Landscape Plan,” dated May 5, 2014, from the Senior Manager, Parks, be endorsed as a guide for future detailed planning and development of the Garden City Lands.”

This report provides a review of the Garden City Lands Legacy Landscape Plan (the Plan) and an update on the progress made toward implementation of the Plan’s directives.

### Findings of Fact

The Garden City Lands Legacy Landscape Plan (Attachment 1) was developed with the understanding that the Garden City Lands (the Lands) are unique, given the bog environment that exists on a portion of the site, as well as its potential agricultural capability, in a location that is accessible to thousands of residents. During the planning and consultation process that led to the Plan, it became clear that there was wide support in the community for development of the Garden City Lands as a green oasis in City Centre for residents and visitors, as well as an important ecological and urban agriculture showcase site.

### Public Consultation

Between May and November of 2013, an extensive public consultation process was conducted that included two public forums, a survey, and input received through Let’s Talk Richmond. In addition, stakeholders, including the Garden City Lands Conservation Society and Richmond Sports Council, participated in the process.

The City also sought guidance from the Agricultural Land Commission (the ALC), the Scientific Advisory Panel for Burns Bog, and a Faculty of Land and Food Systems representative from University of British Columbia regarding site development, management and programming considerations. The ALC has indicated that it fully supports the Plan and will provide an official letter confirming their support.

The synthesis of the consultation together with the key findings from the background inventory and analysis of the site provided a solid basis for the development of an overall Vision and Guiding Principles.

### Vision

*The Garden City Lands, located in the City Centre, are envisioned as an exceptional legacy open space for residents and visitors. Visible and accessible from many directions, the Lands are an impressive gateway into Richmond’s downtown, and a place of transition and transformation from the rural to the urban. Its rich, diverse and integrated natural and agricultural landscape*

*provides a dynamic setting for learning and exploration. It is inclusive with a range of spaces, amenities and experiences that encourage healthy lifestyles, social interaction and a strong sense of community pride.*

Guiding Principles:

- Encourage Community Partnerships and Collaboration
- Respect the Agricultural Land Reserve
- Foster Environmental Sustainability
- Promote Community Wellness and Active Living
- Maximize Connectivity and Integration
- Allow for Dynamic and Flexible Spaces
- Develop Science-based Resource Management Plans

Implementation

Included in the Plan is the Implementation and Actions Timeline. As part of the 2015 Capital Plan, Council approved the \$2.1M capital submission for the work on those actions identified for 2015-2016. The following are the actions now included in Phase 1, according to the capital submission, and the progress to date:

Actions	Status
1. Undertake hydrology studies and install water monitoring equipment.	The equipment has been installed and the monitoring is underway with the first report due in fall 2015.
2. Develop and implement a comprehensive hydrogeology and water management strategy; and Develop a natural resource management plan to confirm the critical ecological values, set goals, and establish best practices.	A combined terms of reference for these studies is being prepared in order to retain the range of expertise required (e.g., biologists, hydrological engineers, soils specialists). The work on the studies will commence in fall 2015.
3. Construct a perimeter trail.	Planning has begun with design proceeding through the summer and construction starting in the fall of 2015.
4. Regrade and plant trees on the disturbed mound area in the NW corner of the Lands.	
5. Develop an interpretation plan that is implemented as the site opens up for public use.	
6. Construct trails and a viewing platform in the middle of the site as a priority.	Planning and design will begin once the studies noted above are complete.
7. Construct boardwalks and trails once the hydrology regime and critical habitats are documented.	
8. Undertake detailed design and engineering for water management.	

The extent of the Phase 1 capital construction works is shown on Attachment 2.

The Plan also included actions relating to establishing farming on the Lands beginning with the proposal from Kwantlen Polytechnic University (KPU). The City has been working with KPU to determine under what terms farming may occur and what community benefits could be derived from it.

City staff met with ALC staff regarding the proposed capital construction works and the potential farm use by KPU. ALC staff provided comment that the City should provide notification to the ALC of the proposed works and if the works were consistent with the Plan, there would be no requirement for further review by the ALC.

Communication

Once the Plan was endorsed, it was posted on the City’s website along with the supporting studies and public consultation results. As a follow up to the approval of the 2015 Capital Plan, the Plan and a description of the scope of Phase 1 was included in the Capital Projects Open House held at City Hall in April of this year.

As implementation of the plan proceeds, staff will provide Council with updates regarding the implementation milestones. In addition, the following Communication and Engagement Plan is proposed:

Communication/ Engagement Type	Purpose	Timeline
Public meetings of Committee and Council	Reports related to implementation of the Plan will be brought forward to General Purpose Committee and then forwarded to Council. The public has access to open agendas and has the opportunity to delegate at meetings.	As required and determined by staff and / or Council.
Corporate Website	Provide regular (e.g., quarterly), detailed updates on implementation of the Plan and on any events or items of interest (e.g., seasonal changes in plants and animals).	Begin June, 2015
City Facebook Page	Provide highlights and images of project milestones, events and items of interest and link to the Corporate website.	Begin Sept, 2015
City Twitter Feed	Provide notification of project milestones, events and items of interest and link to the Corporate website.	Begin Sept, 2015
New Releases	Provide updates on project milestones as well as events or items of interest.	Begin Sept, 2015
Public Events	Hold public events on site to provide interpretation of the site’s unique ecology, information on implementation milestones and to seek public input on options.	Begin Sept, 2015
Stakeholder Engagement	Identify potential stakeholders and plan for stakeholder engagement.  Provide regular updates to the Agriculture Advisory Committee and the Advisory Committee on the Environment.	Begin Sept, 2015

May 6, 2015

- 5 -

### **Financial Impact**

There is no financial impact as a result of this report.

### **Conclusion**

Implementation of the Garden City Lands Legacy Landscape plan has begun. Over the next several months planning and design for Phase 1 capital works will commence with construction of the perimeter trail starting in the fall of 2015. At the same time, the studies that are required in order to further develop the Lands will be conducted. Ongoing communication will ensure that Council and the community are kept up to date on the progress.



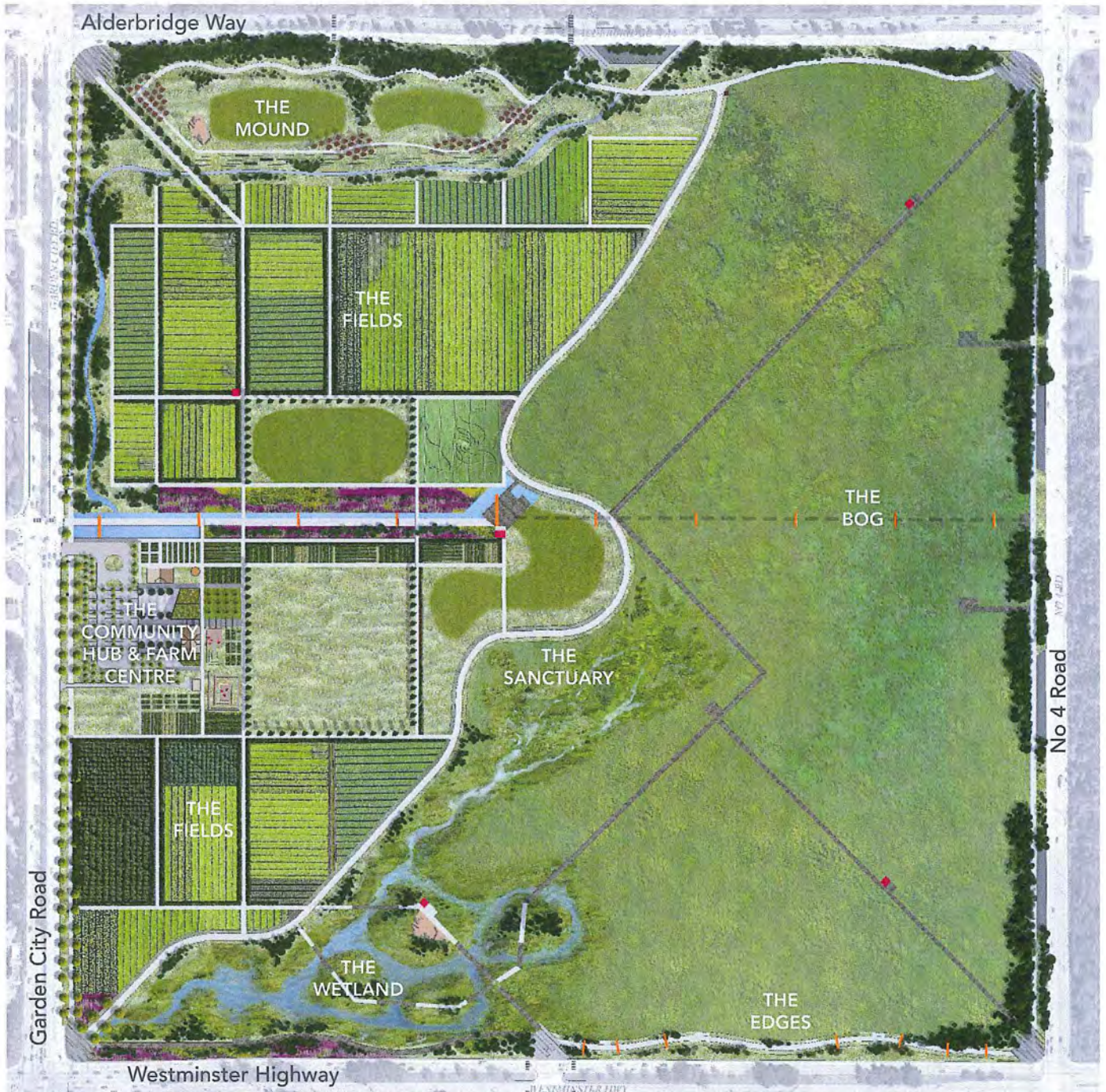
Jamie Esko  
Park Planner  
(604-233-3341)

Att. 1: The Garden City Lands Legacy Landscape Plan – April 2014  
2: Phase 1 Capital Works



## LANDSCAPE ZONES

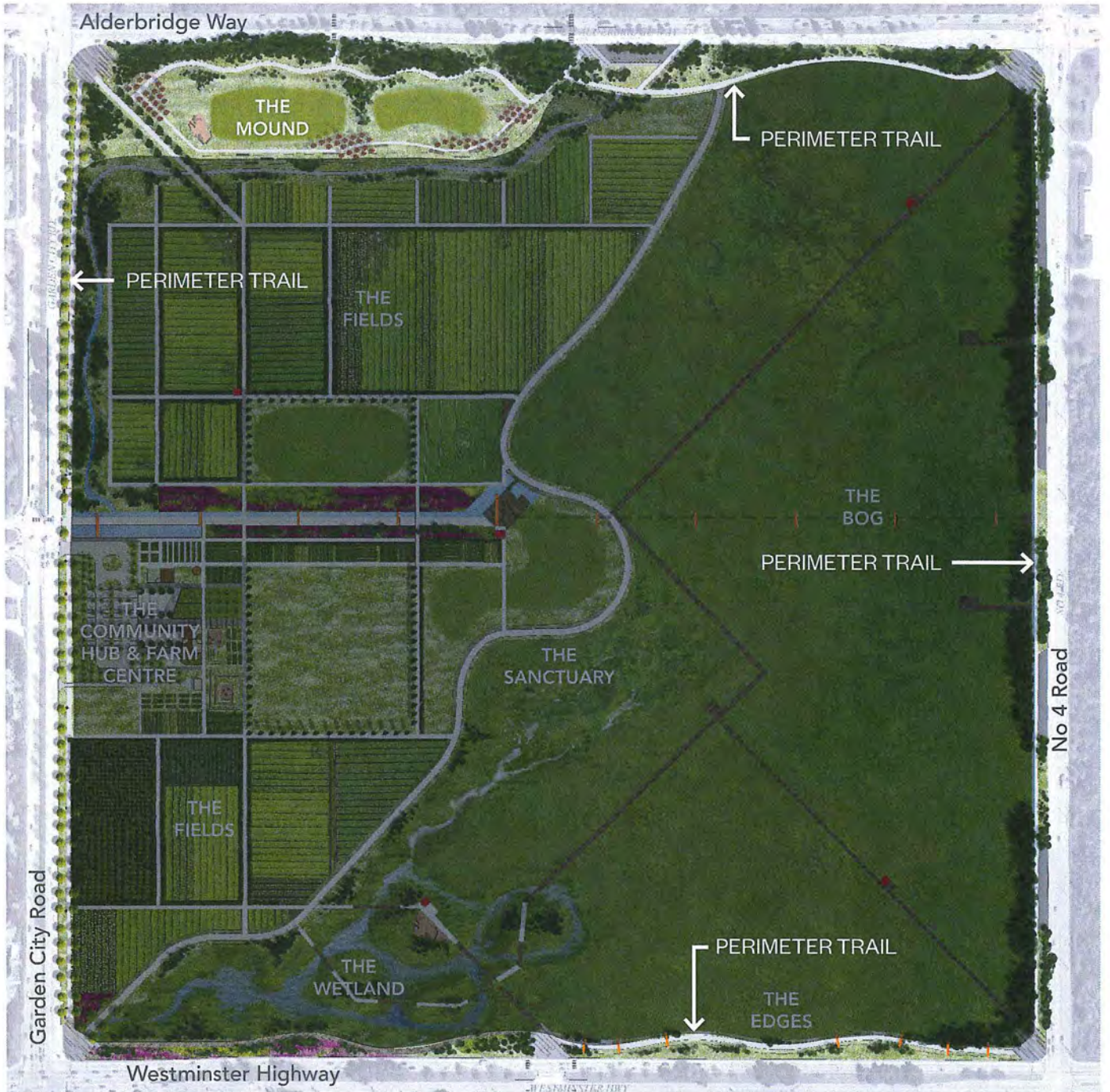
- The Bog
- The Mound
- The Fields
- The Sanctuary
- The Wetland
- The Community Hub & Farm Centre
- The Edges





### PHASE 1 CAPITAL WORKS

- construct perimeter trail
- regrade and plant trees on the disturbed Mound
- implement site interpretation plan



Garden City Lands - Legacy Landscape Plan: Phase 1 Capital Works