



# City of Richmond

## Report to Committee

**To:** Parks, Recreation and Cultural Services Committee      **Date:** September 6, 2023

**From:** Marie Fenwick, Director, Arts, Culture and Heritage Services      **File:** 11-7000-09-20-334/Vol 01

**Re:** **Steveston Community Centre and Library Signature Outdoor Artwork Concept Proposal**

### Staff Recommendation

That the Concept Proposal for the Steveston Community Centre and Library Signature Outdoor Artwork as presented in the report titled, "Steveston Community Centre and Library Signature Outdoor Artwork Concept Proposal," dated September 6, 2023, from the Director, Arts, Culture and Heritage Services, be approved.

Marie Fenwick  
 Director, Arts, Culture and Heritage Services  
 (604-276-4288)

Att. 2

REPORT CONCURRENCE		
ROUTED TO:	CONCURRENCE	CONCURRENCE OF GENERAL MANAGER
Finance Department	<input checked="" type="checkbox"/>	
Library	<input checked="" type="checkbox"/>	
Parks Services	<input checked="" type="checkbox"/>	
Recreation & Sport Services	<input checked="" type="checkbox"/>	
Facility Services & Project Development	<input checked="" type="checkbox"/>	
<b>SENIOR STAFF REPORT REVIEW</b>	<b>INITIALS:</b> 	<b>APPROVED BY CAO</b> 

## Staff Report

### Origin

On December 21, 2022, Council approved the Steveston Community Centre and Library Public Art Plan. The Plan recommends a large-scale signature artwork to be located in the outdoor plaza as well as additional artworks for the interior of the facility.

On March 13, 2023, Council approved the Steveston Community Centre and Library Signature Outdoor Artwork Terms of Reference. The Terms of Reference recommends an outdoor sculptural work of art to support wayfinding and create a sense of arrival and welcome for community members, visitors and staff.

This report presents the proposed concept proposal for a signature outdoor artwork at Steveston Community Centre and Library for Council's consideration.

This report supports Council's Strategic Plan 2022-2026 Focus Area #6

A Vibrant, Resilient and Active Community:

*Vibrant, resilient and active communities supported by a wide variety of opportunities to get involved, build relationships and access resources.*

*6.1 Advance a variety of program, services, and community amenities to support diverse needs and interests and activate the community.*

*6.2 Enhance the City's network of parks, trails and open spaces.*

*6.3 Foster intercultural harmony, community belonging, and social connections.*

*6.4 Support vulnerable populations through collaborative and sustainable programs and services.*

*6.5 Enhance and preserve arts and heritage assets in the community.*

### Analysis

#### Terms of Reference

As per the Council-approved Steveston Community Centre and Library Public Art Plan, the Public Art Terms of Reference for the Steveston Community Centre and Library Signature Outdoor Artwork (Attachment 1) was developed in collaboration and consultation with members of the Steveston Community Society and the Richmond Public Library Board. The Terms of Reference describes the art opportunity, themes, site description, scope of work, budget, eligibility criteria, selection process, selection criteria, project schedule and submission requirements.

The Terms of Reference for the Steveston Community Centre and Library Signature Outdoor Artwork was endorsed by the Richmond Public Art Advisory Committee at their meeting on January 17, 2023 and approved by Council on March 13, 2023.

### Public Art Artist Selection Process

The artist call was posted on March 15, 2023 and closed on April 21, 2023. Thirty-three submissions by artists from across British Columbia were received during the first stage of the selection process. On April 27, 2023, following the Public Art Program's administrative procedures for artist selection for civic public art projects, a five-person selection panel comprised of professional artists, project stakeholders and community representatives reviewed the submissions. The selection panel included the following individuals:

- Alan Sakai – Steveston Community Society Member;
- Emily de Boer– Steveston Community Society Member;
- Sherine Merhi – Richmond Public Library Board Member;
- Joseph Fry – Landscape Architect and Richmond Resident; and
- Diamond Point – Artist

City staff facilitated and attended the selection panel meeting to provide project background for the selection panel and to address technical questions.

In addition, two members of the Richmond Public Art Advisory Committee participated in the selection process as observers:

- Bronwyn Bailey; and
- Frank Ducote

In reviewing the submissions, the selection panel considered how the proposal responded to the theme and objectives identified in the artist call and the potential to create a compelling signature outdoor work of art as evidenced in the samples of past projects provided by the applicants. Following discussion and deliberations, the panel shortlisted five artists and artist teams to develop a concept proposal and presentation for the second stage of the selection process.

The shortlisted artists were:

- Cameron Kerr;
- Jacqueline Metz and Nancy Chew;
- Nathan Lee;
- Susan Point; and
- James Harry and Lauren Brevner

Following the Terms of Reference, the shortlisted finalists were invited to attend an artist orientation meeting with staff and the project design team on May 11, 2023. The meeting provided an opportunity for staff and the project team to share additional information about the site context and review the objectives and opportunities for this project. The artists also asked questions related to materials, installation parameters, schedule and budget.

The shortlisted artists were provided a deadline for their concept proposals for June 12, 2023. Artists were able to submit draft concept proposals and project budgets in advance of the deadline to receive technical feedback from staff, including identifying any concerns from a

maintenance or operations perspective prior to their presentation to the selection panel. Staff also shared the artist information with the selection panelists prior to the final artist selection panel meeting. This process serves to support the finalists in presenting the most feasible proposals to the selection panel for their evaluation and deliberation.

On June 22, 2023, the selection panel convened to interview the shortlisted finalists. Each artist presented their concept proposal followed by a Question & Answer period. Following a lengthy and thoughtfully considered deliberation, the panel recommended the concept proposal *Homecoming* by artist Susan Point for the Steveston Community Centre and Library Signature Outdoor opportunity. (Attachment 2)

The Richmond Public Art Advisory Committee endorsed the recommended concept proposal at their meeting on September 19, 2023.

#### Recommended Artist

Susan Point is an accomplished Musqueam Coast Salish artist who lives on the Musqueam First Nation reserve in Vancouver. She is a self-taught artist who learned about Coast Salish art and culture from her uncle, Professor Michael Kew, her aunt, Dorothy Kew, and from Dominic Point and Edna Grant Point. She began her art career in 1981 and has created numerous high profile public art works including those at the Vancouver International Airport, Stanley Park, National Museum of the American Indian in Washington D.C., Museum of Anthropology at UBC and others. Susan Point is a recipient of the Order of Canada.

#### Recommended Public Art Concept Proposal

*Homecoming* is comprised of four stylized Salish paddles atop basalt boulder bases. The size of the paddles will be approximately 78" tall and 18" wide. Each of the stone bases will be roughly 30" x 30" x 30" making the total sculpture height approximately 9 feet. The paddles — made out of corten steel — will depict salmon swimming upwards on their way up the river to spawn, carved out of 1" thick architectural anodized aluminum plate.

The paddle structures will be designed so that they are not climbable and each carved salmon element can be removed if in need of repair or replacement. All of the proposed materials are durable and capable of withstanding the coastal climate. Two siting options are proposed: either within the planted "outdoor living room" or surrounding it. The artist will work with staff and the project design team to develop the most appropriate locations for the structures. (Attachment 2).

The artist describes the artwork as follows:

*“This site, Steveston Community Centre and Library, is definitely a beautiful site for placement of Coast Salish public art honouring the Coast Salish fishing heritage area as well as the history of Steveston over the years. I can only imagine the amount of activity this site has generated over the last 3,500 years. In honour of our people, I want to do something special.*

*The importance of four in Musqueam and other First Nations cultures is relevant. It represents the four-year cycle of salmon, as well as the four winds, the four directions, the four seasons, the four moons, the four elements- earth, water, air and fire, and so on.”*

### Next Steps

Following Council endorsement of the concept proposal, staff will work with the artist to execute a contract and move into the development and fabrication phase with installation of the artwork in 2025.

### **Financial Impact**

The total budget for the Steveston Community Centre and Library Signature Outdoor Artwork Concept Proposal is \$250,000. The budget will cover all implementation expenses including design, production, fabrication, taxes and other associated costs to deliver a completed artwork on site.

The Steveston Community Centre and Library Signature Outdoor Artwork is funded from the approved Steveston Community Centre and Library capital project. Any maintenance and repairs required to the artwork will be the responsibility of the Public Art Program and will be included as part of the future OBI submission for the facility. The annual maintenance is estimated at \$3000.00.

### **Conclusion**

The Steveston Community Centre and Library Signature Outdoor Artwork Concept Proposal supports the approved Steveston Community Centre and Library Public Art Plan. A signature outdoor artwork at this location will contribute to the neighbourhood character and foster a sense of identity and belonging for residents and visitors. The artwork will create a sense of arrival and welcome for community members, visitors and staff and will enhance the community connection to the facility.



Biliana Velkova  
Public Art Planner  
(604-247-4612)

- Att. 1: Steveston Community Centre and Library Signature Outdoor Artwork Terms of Reference
- 2: Steveston Community Centre and Library Signature Outdoor Concept Proposal

# call to artists

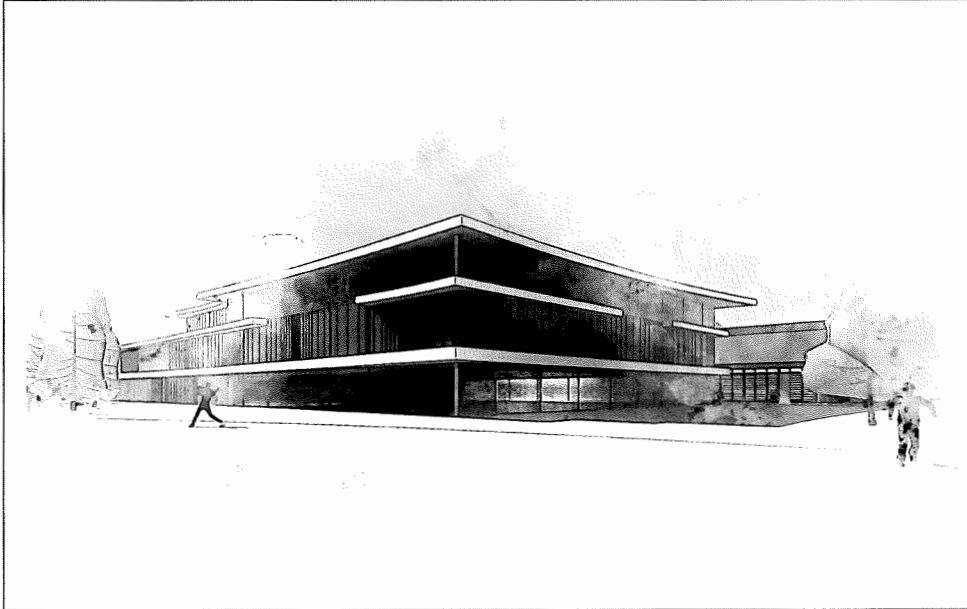


Figure 1. Steveston Community Centre and Library Rendering

## Steveston Community Centre and Library Signature Outdoor Artwork

City of Richmond

## Request for Qualifications (RFQ)

March 2023

### OPPORTUNITY

The Richmond Public Art Program is seeking an artist or artist team to create a landmark signature artwork for the new Steveston Community Centre and Library in Richmond, BC. The public artwork will be located at the entrance plaza of the facility to function as a wayfinding feature that creates a sense of arrival and welcome to the site. All information about the project is described below.

This is a two-stage open artist call. Following review of the submitted artists' statements of interest and their qualifications, up to five artists will be shortlisted by the selection panel and invited to attend a site orientation before preparing a concept proposal for presentation with an interview.

**Budget:** \$250,000 CAD

**Eligibility Requirements:** Open to professional artists and artist teams residing in British Columbia.

**Deadline for Submissions:** April 21, 2023

**Installation:** 2025/2026

# call to artists

## BACKGROUND

A replacement facility for the Steveston Community Centre and Library was approved by Richmond City Council in its priority list of major facility projects for 2016-2026. Following extensive community consultation, Council approved the program for a new facility in September 2019, and the site for this facility in December 2020.

The Steveston Community Centre and Library is envisioned to be the heart of the Steveston community, where residents will come to recreate, learn, play and connect in a welcoming and accessible environment. With the goal to serve the community into the future, the new 60,350 square foot three-storey facility will include: two gymnasiums, a fitness centre, community “living room”, library and study areas, as well as several multipurpose rooms for community use. In addition to community centre and library programs, the facility will host local and regional tournaments and events.

## STEVESTON VILLAGE

Steveston is a historic fishing village located in the southwest corner of Richmond, BC. Known for its rich ecology at the mouth of the Fraser River, it was a place where Indigenous Peoples fished and gathered food for generations. Settled in the second half of the 1800s, early Steveston supported robust canning, fishing, and boatbuilding industries. Fishing industries drew workers from near and far, especially Indigenous Peoples of coastal BC, Japan, China, and Europe. After many prosperous years, Steveston was challenged by a number of tragic events—a drastic decline in salmon stocks, a devastating fire in the village, the Great Depression, and the internment of its large Japanese population in 1942. Despite these challenges, Steveston continued to thrive as a fishing village throughout the 20th century and is still home to the largest fishing harbour in Canada. In recent decades, Steveston has undergone significant growth and development, but retains its small town feel, historic character and fishing traditions.

## STEVESTON COMMUNITY CENTRE AND LIBRARY BUILDING

The 60,350 square foot facility -- with a 36,000 square foot footprint -- will be a three-storey building plus one level of underground parking. The designs will follow a balanced approach where program synergies are realized, impacts on green space and trees are minimized, and views and connections to the park are achieved from many of the program spaces.

The form and character of the building draws inspiration from various buildings and landmarks around the Steveston area, reflecting elements such as the platforms and docks at the Steveston waterfront, canopies and fascia trims from the Steveston Tram Shed, the traditional Japanese curved roof form of the Martial Arts Centre, as well as materiality and patterns from the surrounding industrial buildings. All these elements are cohesively incorporated to form a modern contemporary design.

# call to artists

## LOCATION

The public artwork will be located at the entrance plaza to the west of the facility. This is a high profile site, visible from Moncton Road, situated in historic Steveston Village with close proximity to the mouth of the Fraser River. See Site Plan in Appendix 1.

A landmark, signature artwork at this location is anticipated to attract people to gather, pose for photos and create a sense of place and arrival. The siting of the proposed artwork should not impede on future programming and community access at the entrance plaza.

The artwork may be a single stand-alone artwork, or series of sequential pieces, to further address the themes mentioned below.

## BUDGET

The total budget for this project is \$250,000 CAD. The budget includes (but is not limited to) artist fees, design, travel, permitting as needed, engineering fees, fabrication, installation, administration, photography, insurance and all taxes (GST excluded).

## ARTIST ELIGIBILITY

This opportunity is open to artists or artist teams residing in British Columbia, Canada. Qualified artists will have proven experience developing artworks, specifically for civic projects. City of Richmond staff and its Public Art Advisory Committee members, selection panel members, project personnel, and immediate family members of all of the above are not eligible. Richmond-based artists are urged to consider this opportunity.

Artists that are currently under contract with the City in a public art project are ineligible for other projects until the current contract is deemed complete.

## THEMES

Artists are encouraged to explore any of the following themes for the Steveston Community Centre and Library while ensuring room for artistic expression, enjoyment, play, colour and interactivity. The artwork should appeal to all ages and engage the community.

### *Indigenous Culture*

For generations, Indigenous Peoples were drawn to the area's rich natural resources. Local Indigenous groups used the area to harvest its bounty including fish, shellfish, berries and crabapples.

### *Steveston Fishing Industry*

Fishing has been the central driver of settlement in the Steveston area, which has served as a base for fishers to collect and process their harvest for hundreds of years. It is inherent to the long traditions of Indigenous Peoples fishing the Fraser River and Salish Sea. The early fishing industry served as



# call to artists

the foundation upon which the community was built and it remains true for the more than 500 commercial vessels in Steveston Harbour today.

## ***Japanese Canadian History***

Canadians of Japanese descent have been fundamental to the development and growth of Steveston. In the early 20th century, Steveston was home to a vibrant Japanese Canadian (Nikkei) culture, which included the Steveston Japanese School, Japanese Hospital, boatworks buildings, kendo club and a significant wooden boat fishing fleet.

## ***Fraser River and Local Ecology***

Steveston exists in its current state in large part because of its physical and natural environment at the mouth of the Fraser River. Significant natural heritage can be found in the ecology of the tidal marshes, sloughs and mud flats. While many of the original natural features have been lost, traces of native vegetation, shoreline wildlife, marshes and sloughs are still present.

## **SELECTION PROCESS**

A selection panel will recommend the artist or artist team to City Council at the conclusion of a two-stage open call process.

A selection panel comprised of two art or design professionals and three representatives from the Steveston Community Society and Richmond Public Library Board will review the applicants' submissions. Representatives from the Parks, Recreation and Sport, and Engineering Departments will serve as advisors to the panel. Based on the selection criteria listed below, the panel will select up to five finalists to develop their concept proposals and attend an interview. A fee of \$2,000 will be paid to each of the shortlisted artists or artist teams.

### **Stage 1**

- Artists submit a written Statement of Interest, Approach to the Site and their Qualifications in the format outlined in the Submission Requirements below.
- Selection Panel to shortlist up to five artists or artist teams for Stage 2.

### **Stage 2**

- Shortlisted artists enter into an Agreement with the City to prepare a Detailed Concept Proposal based on their initial Approach.
- Artists to be provided with detailed site information and responses to questions about the site from City staff.
- Shortlisted artists to attend an interview (in-person or virtual) with the selection panel to present a Detailed Concept Proposal.
- Selection panel to recommend one artist or artist team to Council for endorsement. Selection panel reserves the right to make no recommendations from the submitted applications and artist interviews.

# call to artists

## ARTIST SELECTION CRITERIA

### Stage One: Selection Criteria

- Artistic merit of artist statement of interest.
- Experience in producing work that reflects community identity and assists in building meaningful cultural places.
- Understanding of the relevance of the site and its histories.
- Potential for making engaging artwork, suitable for multiple audiences.
- Demonstrated capacity to complete work within established project schedules and timelines.
- Demonstrated ability to work with multiple project stakeholders.

### Stage Two: Selection Criteria

- Ability of concept proposal to reflect arrival and welcome, community identity and contribute to building the character and identity of the neighbourhood.
- Ability of the 3D artist visualizations (such as digital renderings, maquettes or models) to communicate the concept and how it responds to the existing character of the site by taking into account scale, colour, material, texture, content and the physical characteristics and design parameters of the location.
- Appropriateness of the proposed project budget including, but not limited to: artist fees, materials, fabrication, administration, insurance, installation, documentation and consultant fees.
- Concept proposal sensitivity to durability, life span and environmental concerns with respect to artwork materials, method of fabrication, installation and maintenance.
- Artist response to any feedback and follow-up questions from Selection Panel regarding artistic merit of the concept proposal in response to project opportunity.
- Appropriateness of the proposal to the City of Richmond's [Public Art Program Goals](#).

## SUBMISSION REQUIREMENTS

Email all documentation as one (1) PDF document, not to exceed a file size of 5 MB to [publicart@richmond.ca](mailto:publicart@richmond.ca).

### Stage One

- INFORMATION FORM:** please complete the information form attached to this document.
- STATEMENT OF INTEREST:** no more than 300 words, describing artist or creative practice and experience of work and themes/topics of interest you would like to explore for this opportunity. Please consider

# call to artists

and reference the Stage One Selection Criteria (above) in your Statement. Please do not include text descriptions of a concept proposal. This information will not be accepted and will be removed by staff prior to review with the Selection Panel.

- ARTIST CV:** two-page maximum. If submitting as an artist team, please submit maximum one pages per team member.
- WORK SAMPLES:** up to ten (10) supporting image examples of previous work. One image per page. Please include artist name(s), title, year, location and medium information to be on each image page.
- REFERENCES:** three (3) references who can speak to your skills and experience. Please only provide the names, titles and Email and/or telephone contact information for each individual. Only references for shortlisted artists will be contacted.

## Stage Two (shortlisted artists ONLY)

- CONCEPT PROPOSAL:** no more than 500 words, describing concept, rationale in response to the public art opportunity, materials and location/site.
- CONCEPT VISUALIZATION:** may include digital artist renderings, maquettes/models to fully communicate dimensions, scale, colour, viewer experience, materials and relationship to site features.
- PROJECT BUDGET:** to outline the allocation for expenses, including but not limited to artist fee, administration, materials, production, fabrication, installation, insurance, documentation, engineering design fees, and other consultant fees.

**PRESENTATION/INTERVIEW:** 15–20 minute artist presentation to the Selection Panel followed by a Q+A to present the concept proposal for consideration.

## PROJECT TIMELINE

<b>Submission Deadline:</b>	April 21, 2023
<b>Shortlisted Artist Orientation:</b>	May 11, 2023*
<b>Shortlisted Artist Interviews:</b>	June 22, 2023*
<b>Installation:</b>	2025/2026

\*All applicants are asked to reserve this date on their calendars.

## SOURCES FOR ADDITIONAL INFORMATION

[Richmond Public Art Program](#)

[City of Richmond Archives](#)

[Museums and Heritage Sites](#)

[Steveston Village Conservation Program](#)

[Steveston Community Centre and Library Public Art Plan](#)

# call to artists

## SUBMISSION GUIDELINES

1. All supporting documents must be complete and strictly adhere to these guidelines and submission requirements (above) or risk not being considered.
2. All submissions must be formatted to 8.5 x 11 inch pages, portrait format.
3. Submission files must be 5 MB or smaller.
4. If submitting as a team, the team should designate one representative to complete the entry form. Each team member must submit an individual resume/curriculum vitae. (See Submission Requirements)
5. All documents must be sent by email to: [PublicArt@Richmond.ca](mailto:PublicArt@Richmond.ca)

## ADDITIONAL INFORMATION

1. The selected artist will be required to show proof of WCB coverage and \$5,000,000 general liability insurance.
2. Please be advised that the City and the selection panel are not obliged to accept any of the submissions and may reject all submissions. The City reserves the right to reissue the Artist Call as required.
3. All submissions to this Artist Call become the property of the City. All information provided under the submission is subject to the Freedom of Information and Protection of Privacy Act (BC) and shall only be withheld from release if an exemption from release is permitted by the Act. The artist shall retain copyright in the concept proposal. While every precaution will be taken to prevent the loss or damage of submissions, the City and its agents shall not be liable for any loss or damage, however caused.
4. Submissions must be received by April 21, 2023. Extensions to this deadline will not be granted under any circumstances. Submissions received after the deadline and those that are found to be incomplete will not be reviewed.
5. If an artist requires accessibility support, please contact the Richmond Public Art Program.

## ACCESSIBILITY SUPPORT

The City of Richmond strives to create artist opportunities that are inclusive and accessible. If you require assistance in completing the written application for any reason, please contact: [PublicArt@Richmond.ca](mailto:PublicArt@Richmond.ca) or Tel: 604-204-8671

## QUESTIONS

Please contact the Richmond Public Art Program:  
[PublicArt@Richmond.ca](mailto:PublicArt@Richmond.ca) or Tel: 604-204-8671

## SUBMISSION DEADLINE

April 21, 2023

## SUBMISSION ADDRESS

[PublicArt@Richmond.ca](mailto:PublicArt@Richmond.ca)



# call to artists

## APPENDIX 1 STEVESTON COMMUNITY CENTRE AND LIBRARY LOCATION

Steveston has many significant human history and natural attractions that give the community a distinct sense of place, and the Steveston Community Centre and Library site is at the geographic centre of it all. The Gulf of Georgia Cannery, Garry Point Park, Imperial Landing Waterfront Park, and other major community amenities are within a short walking distance of Steveston Park. (Figure 2)

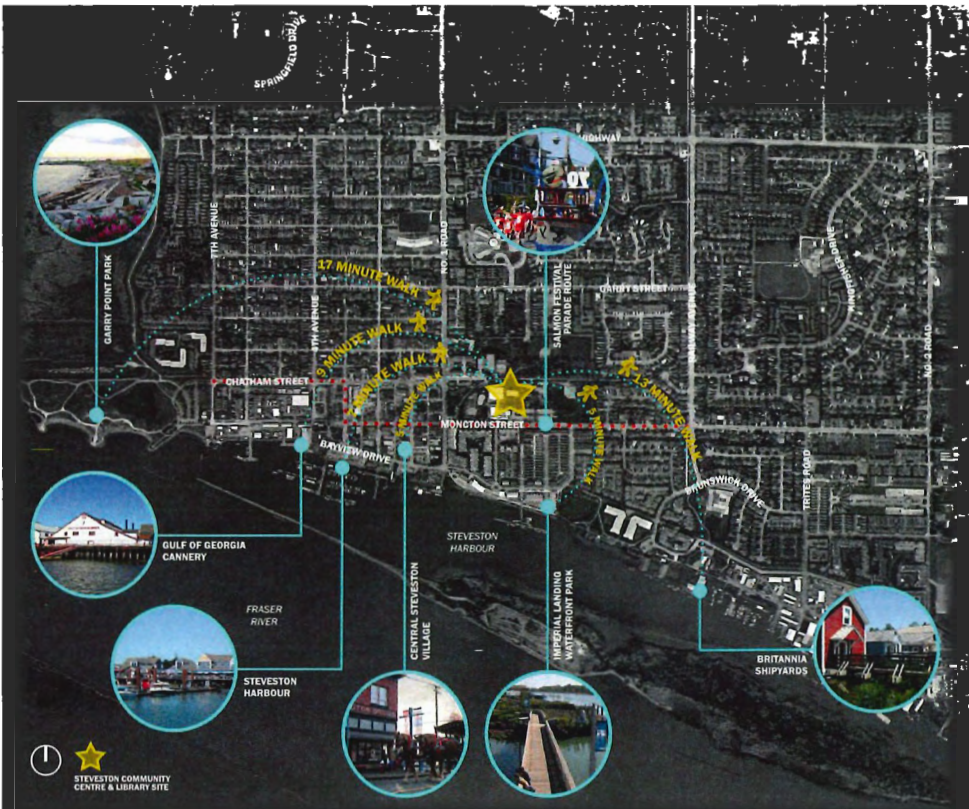


Figure 2. Steveston Context

# call to artists

The Steveston Community Centre and Library is ideally located to be the epicentre of social life in Steveston. The site is within easy walking distance for most residents of Steveston. (Figure 3).

1. New Steveston Community Centre & Branch Library
2. Existing Steveston Community Centre & Branch Library (to be demolished)
3. 177 Surface Parking Stalls & Plaza
4. Steveston Martial Arts Centre
5. Net Shed Building
6. Steveston Outdoor Pool
7. Japanese Canadian Cultural Centre
8. Festival Storage
9. Caretaker Building
10. Community Police Station
11. Steveston Interurban Tram Building
12. Playground
13. Waterplay Area
14. Fast Pitch Diamond
15. Sherwood Forest
16. Off Leash Dog Area
17. Slow Pitch Diamond
18. Outdoor Tennis Courts
19. Lacrosse Box
20. Steveston Community Park Boundary Line



Figure 3. Steveston Community Centre and Library site plan

# call to artists

The artwork will be located at the entrance plaza to the West of the Steveston Community Centre and Library. (Figures 4 and 5).

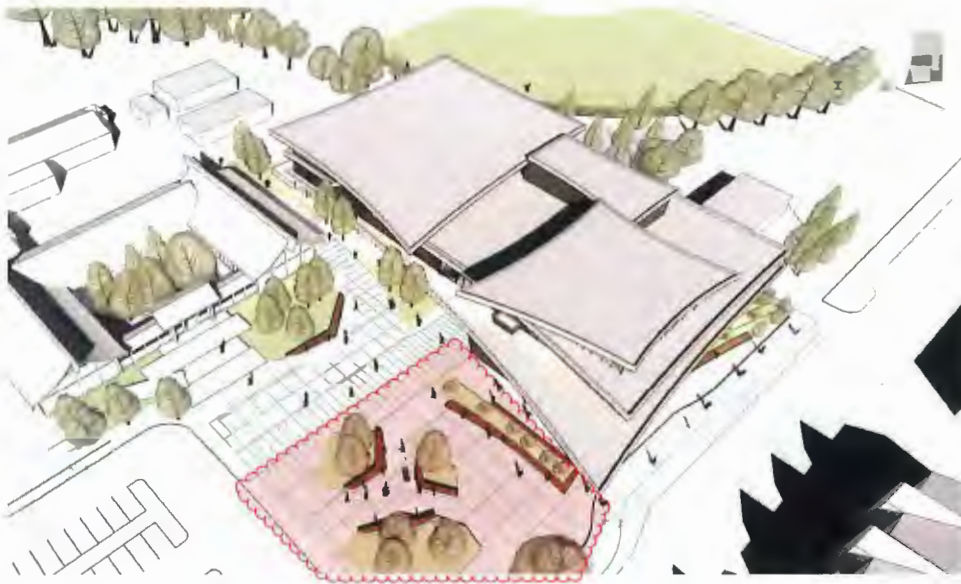


Figure 4. Steveston Community Centre and Library public artwork location

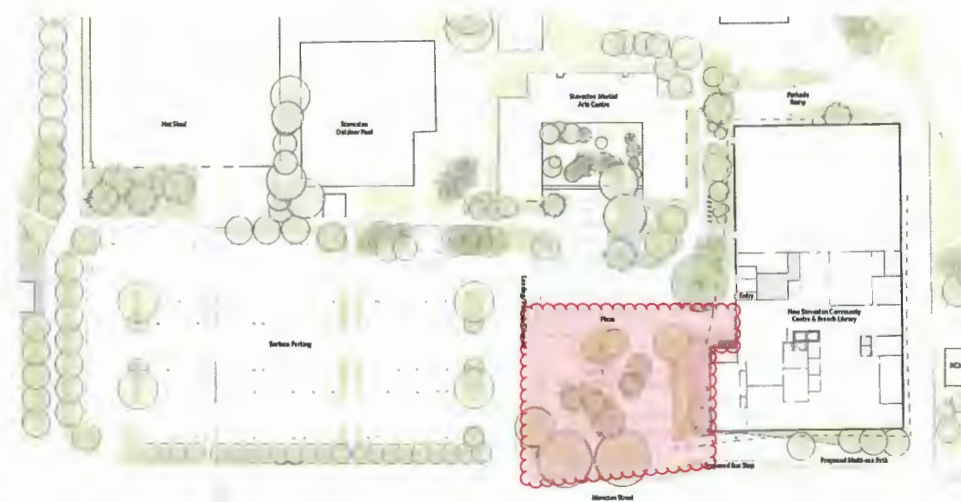


Figure 5. Steveston Community Centre and Library public artwork location



# call to artists

## RFQ: Steveston Community Centre and Library Signature Outdoor Artwork

Attach one (1) copy of this form as the first page of the submission.

Name: \_\_\_\_\_

Address: \_\_\_\_\_

City: \_\_\_\_\_ Postal Code: \_\_\_\_\_

Primary Phone: \_\_\_\_\_ Secondary Phone: \_\_\_\_\_

Email: \_\_\_\_\_ Website: \_\_\_\_\_  
(One website or blog only)

**Incomplete submissions will not be accepted. Emailed submissions over 5 MB will not be accepted. Information beyond what is listed in the Submission Requirements will not be reviewed.**

**Optional: Do you self-identify as a member of an equity-seeking and/or underrepresented community? (examples: Indigenous, person of colour, LGBTQ2S+, mixed ability, newcomer, Deaf, hard of hearing, living with a disability, etc.) If so, please specify:**

\_\_\_\_\_  
\_\_\_\_\_

**If applicable, please indicate additional members of your artist team:**

\_\_\_\_\_  
\_\_\_\_\_

**Would you like to receive direct emails from the Richmond Public Art Program?**  Yes  No

**Signature:** \_\_\_\_\_ **Date:** \_\_\_\_\_

Submit applications by email to: [PublicArt@Richmond.ca](mailto:PublicArt@Richmond.ca)

### Additional Information

Please be advised that the City and the selection panel are not obliged to accept any of the submissions and may reject all submissions. The City reserves the right to reissue the EOI/RFP, as required. All submissions to this EOI/RFP become the property of the City. All information provided under the submission is subject to the Freedom of Information and Protection of Privacy Act (BC) and shall only be withheld from release if an exemption from release is permitted by the Act. The artist shall retain copyright of the submitted documents. While every precaution will be taken to prevent the loss or damage of submissions, the City and its agents shall not be liable for any loss or damage, however caused.



**Homecoming:**

**Steveston Community Centre and Library,**

**City of Richmond**

**Susan Point**

**June 2023**

### EXPRESSION OF INTEREST AND CONCEPTUAL APPROACH:

Since January 1981, I have done extensive research on my Coast Salish peoples art ... which was an almost lost art form at that time ... whereby very little traditional Coast Salish imagery was documented and thus unavailable to me. Limited to what I collected in my research, I began designing and creating Coast Salish art in my own personal contemporary art style ... eventually creating art pieces in various mediums. One of the most important things that I learned over time (which is probably the most important) is that although our ancestors from various Nations all shared a common visual language ... they each had their own personal expression of our unique Salish art ... and this is what separates Coast Salish art from all other historic First Nation art forms along the Pacific Northwest Coast.

I am of Native American heritage ... and a professional Coast Salish artist from the Musqueam Nation in Vancouver, B.C. My people's territory, the Coast Salish, entails all of Vancouver, B.C. and its surrounding areas; the northern tip of Vancouver Island; and extends into the Washington State. We were, and always will be, "one people", with a common history rooted in the same family tree. Our tradition as Salish people is to share and welcome!

As a contemporary Coast Salish artist, I have encountered many pre-conceived ideas of what Coast Salish art is. Nevertheless, I am always happy to surprise the public with artwork that is universal in its appeal yet still honors our heritage ... while embracing new techniques and subject matter. I strongly feel that it is important for my First Nations peoples to re-establish our Coast Salish footprint upon our unceded lands ... creating a visual expression of the link between the past, present and future that is both accessible and people friendly. In creating large scale public art, I work in a wide range of materials ... from the traditional carved red/yellow cedar to non-traditional contemporary mediums such as glass, metals, polymers, etc. ... depending on the requirements and context of site-specific projects. If selected for this Public Art Opportunity, I cannot wait to expand on all initial thoughts/ideas I have towards this exciting

project ... creating a unique and original public art piece with emphasis on the cultural and historic importance of the area ... the traditional ancestral home of the Musqueam People.

In every project that I have done over the years, I have always done full research on the sites where my public art is to be installed so as to follow protocol. Designing imagery on my site-specific public art reflects on this research and the strong connection to the site itself ... contemporary Coast Salish imagery that relates to all peoples and cultures.

I truly believe I have the public art experience and qualifications as a First Nations contemporary Coast Salish artist to make this Public Art Project a successful realization of diverse communities and cultures in a sensitive social environment. I will positively be able to exemplify the community context and importance of the fishing heritage of our peoples living on the Salish Sea in a meaningful and lasting way for Steveston residents and visitors as well as the nuances of all Coast Salish peoples and the broader Native people's iconography across North America in the modern viewpoint of public art. In all of my public art commissions, I have successfully undertaken and executed the project in accordance with the scope, budget, and timeline.

For this specific Project, it is my intent to bring a unique perspective to the viewer by creating multiple viewing angles and different values from each view ... adding a distinctive visual character to the plaza space (room) which honors the diversity of people living nearby and afar in line with the world-renowned reputation of Coast Salish communities as a welcoming place for friendly people from all walks of life. As these lands are originally/traditionally a part of the immense Musqueam territories, a traditional sacred village site, our community members are important watchmen for these lands and the people living within the surrounding areas ... which I fully understand and I want to honor my ancestors heritage within my proposed artwork. In fact, my last name comes from the point at Steveston, where my father's family and ancestors lived for centuries.

In designing and creating an “original” public artwork for this site, my goal is to be successful in combining several components ... something that is engaging to people from all over the world and is respectful and agreeable to the original stewards of these lands. Viewers of any age will be able to recognize and appreciate the originality of my design ... which will be fabricated in a material(s) that would be maintenance free as well as addressing longevity, vandalism, walking traffic and public safety ... in a human sized scale ... but still being an intimate piece of art that fits the scale of the Plaza Garden. This artwork will leave a lasting impression and significance for the Native peoples of this area as well as residents, guests, and visitors.

#### **ARTWORK PROJECT NARRATIVE:**

Upon reviewing the “Request for Qualifications”, I was very excited. The information contained in the RFP was so familiar!

This site, Steveston Community Centre and Library, is definitely a beautiful site for placement of Coast Salish public art honoring the Coast Salish Fishing Heritage area as well as the history of Steveston over the years! I can only imagine the amount of activity this site has generated over the last 3500 years. In honor of our people, I want to do something special!

I am presenting you with visual options for your imagination and to consider the feasibility. I noticed that there is power very close to my proposed location in the outdoor living room. When the site is further developed, will there be the opportunity to bring lighting to the proposed artwork? I think it is an important feature that will not only enhance the artwork in the evening and morning hours but from experience, lighting has been a key deterrent for vandals.

My concept proposal, conceptually speaking, is to create **four** stylized Salish paddles. The contour of the paddle will be comprised of 1” CORTEN steel ... integral for strength. The size of the paddles approximately 78” tall x 18” wide.

Attached to each paddle on both sides would-be salmon carved from 1" thick architectural anodized aluminum swimming upwards on their way up the river to spawn. I have made a maquette, but it does not show the detail of the carving that I would incorporate into each salmon, these are only generic fish shapes in the rendering but I would adorn them with traditional shapes and also, I would incorporate salmon eggs.

The importance of four in Musqueam and other first nations cultures is relevant. It represents the 4 year cycle of salmon, as well as the four winds, the four directions, the four seasons, the four moons, the four elements- earth, water, air and fire, and so on.







Each of the four paddles sit atop their own Basalt stone base, similar to a sculpture I created in Bremerton Wa. In 2022  
Each of these stone bases is roughly 30" x 30" x 30" making the total sculpture height 108 inches tall, 9 feet.



Within paddle contours, on each side I have created different swimming imagery for a total of 8 designs. I am conscious of addressing any possible site view ... which is why I have created interest from any site view using a weave pattern (while moving around the artwork, it will always look like you are right in front).



Paddles held upside down symbolize peaceful connections. The paddles will be created with pierced open areas. The piercing allows light to come through during the day, and they have a much lighter ornamental "gateway" feeling. The viewer will see design features at any time of day ... no matter what side the sun is on (positive and negative with light and shadow). If the site provides artwork lighting, this will allow the same effect at night but in reverse ... reversing the positive and negative imagery the paddles will be lit, and pierced areas will be dark.

As the sun moves, this will highlight different contours of design ... as well as adding aspect creating an interesting form and possibly a shadow after its installed.





### CONCISE CONSIDERATIONS:

- The materials I am planning to use are marine grade aluminum, CORTEN steel, concrete foundation and Basalt Plinths. All of these materials are durable and capable of withstanding our coastal climate. The Corten will be pre patinated to prevent runoff staining. The Anodized Aluminum will not be dyed with colour but would stay in the bronze and gold spectrum to ensure longevity.
- I am aware of the considerations of creating foundations in this type of location whereby it is in a planted garden bed.
- I am willing to work with Parks to incorporate into the garden and select appropriate tree options.
- These concepts are rough and would be refined for safety and aesthetics. I will make the paddles in such a way that they are **not** climbable. Also, Each Salmon will be removable if damaged and needs repair or replacement.
- I will add a level of detail seen in images from my example of works submitted in stage one.
- I will be able to create this work within the requested timeline and within budget.
- The paddles will be double-sided with pierced open areas. The piercing allows light to come through during the day, and it will have a much lighter ornamental feeling. The viewer will see design features at any time of day ... no matter what side the sun is on (positive and negative with light and shadow). If the site provides artwork lighting, this will allow the same effect at night but in reverse ... reversing the positive and negative imagery the paddle will be lit, and pierced areas will be dark.

- My artworks are always changing and evolving and growing. The designs in this proposal are for you to see my concept. Nothing is written in stone; if there is a design that you think should be referenced, I will incorporate it in my style.
- I've carefully considered that the nature of the design has to fit the scale and location of the landscape design ... I've aspired to the highest level of original creativity and excellence in design, creating a landmark work for the Steveston community.

When addressing public art, I have three obligations to fulfill: the criteria and the vision of the art committee and the community; paying respect to my ancestors in a way which honors our traditions of welcome and sharing, and to challenge myself so that I can make the best public art piece I can within the budget. I hope you will see that I have strived to address all of the design criteria desired for this opportunity, be it: Exceptional, Sustainable, Accessible, Synergistic and Connected to the site.

**BUDGET:**

\$35,000	Materials (Inclusive)
\$125,000	Fabrication
\$10,000	Installation
\$2,000	Comprehensive Shipping
\$4,000	Meetings / Conference Calls / Travel
\$8,500	Final Design & Engineered Drawings
\$3,000	Insurance
\$50,000	Artist Fee 20 %
\$12,500	Contingency 5%
<hr/>	
<b>\$250,000</b>	<b>Total Budget</b>



INSPIRATION IMAGE

