



# City of Richmond

## Report to Committee

---

**To:** Community Safety Committee **Date:** May 26, 2014  
**From:** Rendall Nessel, Superintendent **File:** 09-5000-01/2014-Vol  
Officer In Charge, Richmond RCMP Detachment 01 (14.13)  
**Re:** **RCMP's Monthly Report - April Activities**

---

### Staff Recommendation

That the report titled "RCMP's Monthly Report – April 2014 Activities" dated May 26, 2014, from the Officer in Charge, Richmond RCMP be received for information

Rendall Nessel, Superintendent  
Officer In Charge, Richmond RCMP Detachment  
(604-278-1212)

Att. 4

| REPORT CONCURRENCE                                       |               |
|--|---------------|
| CONCURRENCE OF GENERAL MANAGER<br>                       |               |
| REVIEWED BY STAFF REPORT /<br>AGENDA REVIEW SUBCOMMITTEE | INITIALS:<br> |
| APPROVED BY CAO/Deputy<br>                               |               |

## Staff Report

### Origin

At the request of the Community Safety Committee, the Officer in Charge will keep Council informed on matters pertaining to policing in the community of Richmond.

This report supports Council Term Goal 1:

*To ensure Richmond remains a safe and desirable community to live, work and play in, through the delivery of effective public safety services that are targeted to the City's specific needs and priorities.*

### Analysis

Below is the RCMP's Monthly Report regarding April 2014 activities.

#### Noteworthy Files and Activities

##### ***Shooting in Richmond***

On April 19, 2014 Richmond RCMP were called to the McNealy drive area just before 10:30 p.m., after a man was shot while sitting in a vehicle. The victim was able to get himself to Richmond General Hospital and is in stable condition at this time. Richmond's RCMP Serious Crime Unit is continuing to investigate this shooting.

##### ***Sexual Assault***

On Friday, April 25, 2014, at approximately 11:00 p.m., a woman got off the Skytrain at Brighthouse station and then walked towards Blundell. While walking westbound on Blundell, she was grabbed from behind and sexually assaulted.

Richmond's RCMP Serious Crime Unit is currently reviewing other sexual assault investigations that took place in the Lower Mainland. At this point, they have found no similarities between this incident and other investigations.

#### Auxiliary Constables

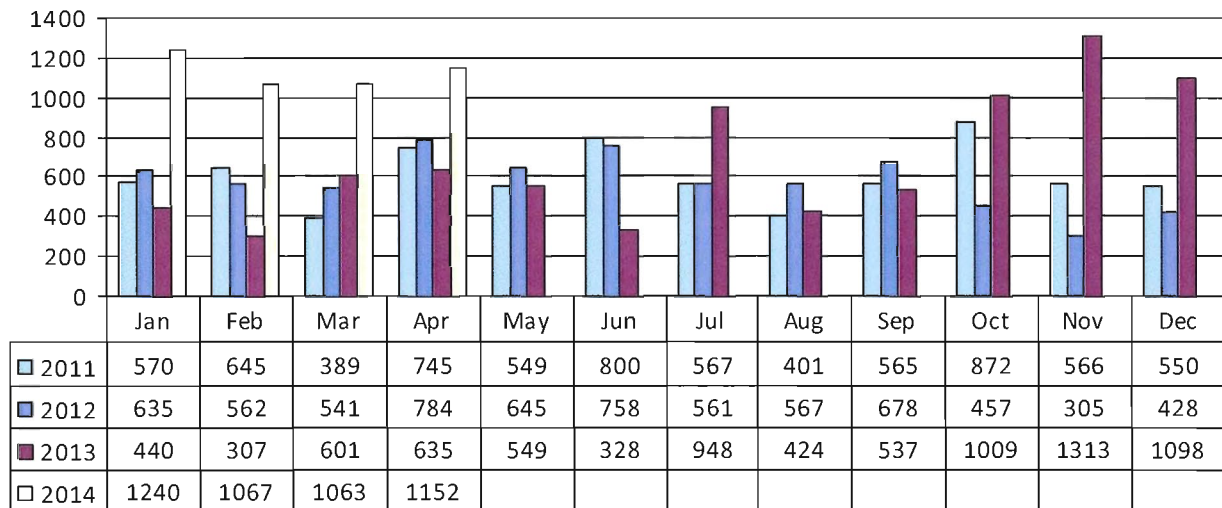
The primary mandate of Richmond's Auxiliary Constables is to support community police activities relating to public safety and crime prevention. The auxiliary constables support community and special events, as well as participating in a variety of crime prevention programs within the City of Richmond.

Total Volunteer Hours (includes community policing activities, as well as hours spent in training, court, and on ride-a-longs and call-outs):

- As of the end of April 2014, the Richmond Detachment had 44 active Auxiliary Constables.

- Richmond's Auxiliary Constables have volunteered 4,521 hours to date in 2014. Figure 1 compares the monthly hours of service for the years since 2011.

**Figure 1: Auxiliary Constable Volunteer Hours  
Total Hours**

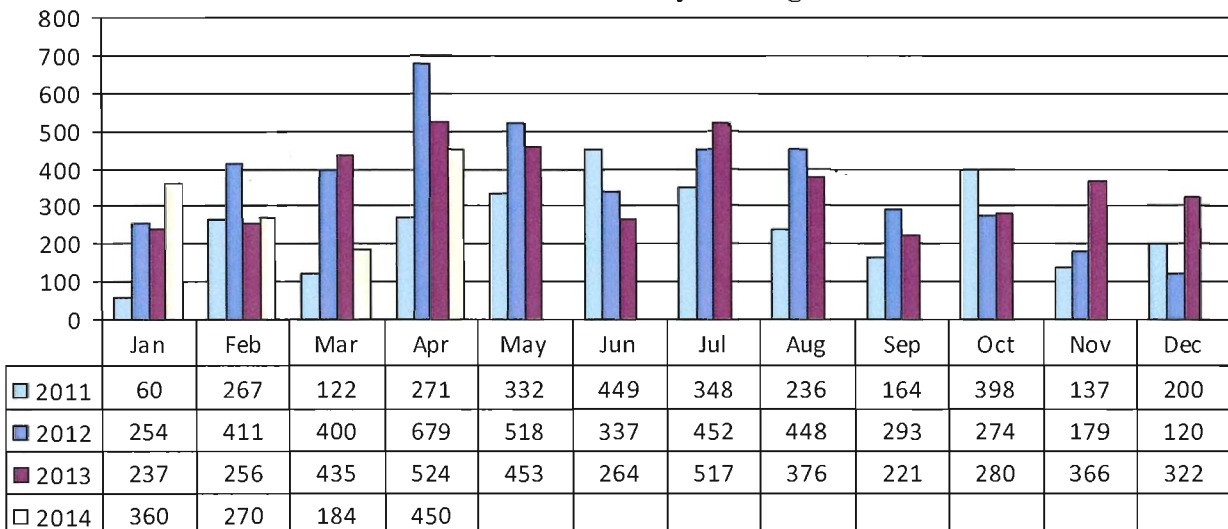


The significant increase in total hours since October 2013 is primarily due to the training of the new troop. The 17 new auxiliary constables completed 320 hours of formal training and graduated on April 13, 2014.

**Community Policing Hours** (includes all crime prevention programs and community events):

As of April, Richmond's auxiliary constables have contributed 1,263 hours to community policing duties in 2014. Figure 2 compares the monthly hours of service for the years since 2011.

**Figure 2: Auxiliary Constable Volunteer Hours  
Community Policing**



**Community Policing activities for April 2014 included:**

- Freedom of the City – provided traffic control and direction for a parade to and from City Hall
- RCMP Youth Academy – participated in an event in Chilliwack over the Easter weekend, providing policing training scenarios presented to Richmond youth participants
- Canadian Women’s Wheelchair Basketball Championship – provided a uniformed police presence, interacted with participants and the public
- Woodward Elementary School Fair – interacted with families and distributed safety information to participants
- School Sports events - members participated in sports events held at elementary schools to increase communications between youth and police

Auxiliary Constables also continue to provide assistance to regular members with traffic and general duty shifts, primarily on Friday and Saturday nights.

**Community Policing*****Highlights***

The first quarter 2014 Crime Prevention and Business Link newsletters were published (Attachment 1 and Attachment 2).

On April 2, 2014, a block watch captains and co-captains meeting was held at Steveston London High School. As the topic was internet safety, the meeting was opened to Parent Advisory Council members and police station volunteers. Over 100 people attended the presentation by Richmond RCMP member Cst. Stu Gray.

***Block Watch***

During the month, 254 letters were sent to victims and their neighbours, to inform city residents that a residential break and enter had occurred in their neighbourhood, and to encourage residents to start a Block Watch group. Similarly, 16 Business Link letters were sent to Richmond businesses that experienced a break and enter during this period. Both residential and Business Link break and enter letters offer crime prevention tips, direct Richmond residents and business owners to the crime prevention web pages, and encourage them to register for the email alerts.

There were 46 residential and 19 business break and enter email alerts sent this period to registered Richmond residents and businesses. These emails inform home and business owners that a break and enter has occurred, provide crime prevention information, and direct residents and business owners to the crime prevention web pages.

***Richmond Detachment Stolen Auto Recovery and Lock Out Auto Crime Statistics***

Notices supplied by ICBC are issued by a community volunteer, and left on every car in a local parking lot. The notice contains the Community Police Station name, crime prevention tips, location and date, as well as a list of questions that have been checked “yes” or “no”. These notices indicate to the reader what issues need to be addressed in order to keep his or her vehicle safe.

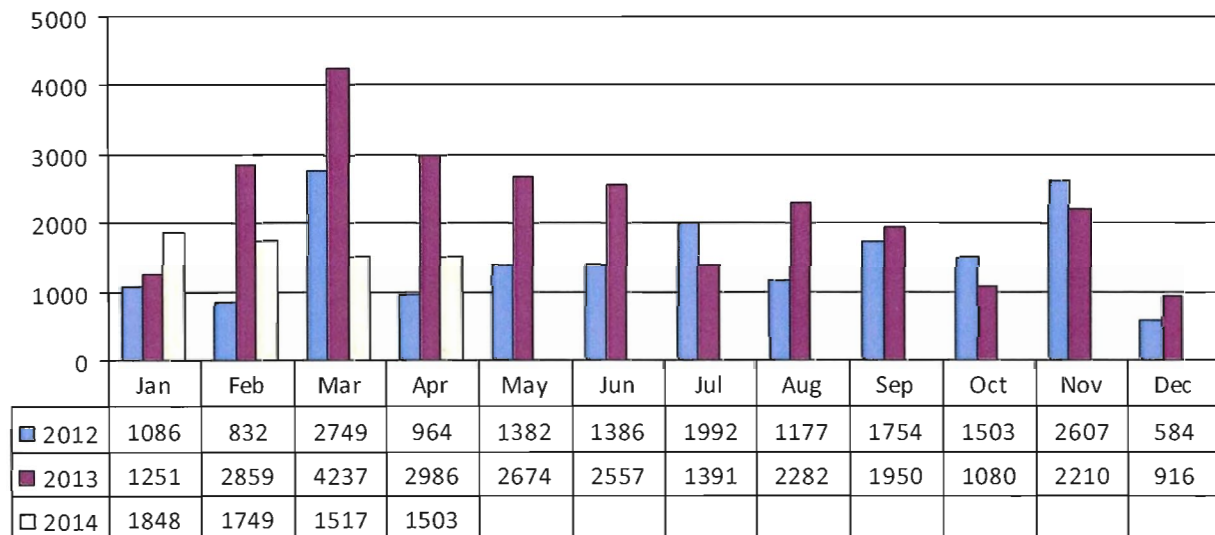
On April 16, 2014, community policing participated in a lock out auto crime blitz. During the blitz, 868 lock out auto crime notices were given out at four locations; Richmond Public Library, River Rock Casino, Richmond General Hospital and the Cosmo/Pacific Plaza.

Example questions:

- Does the vehicle have an anti-theft device? (e.g: alarm, immobilizer or steering wheel-lock)
- Are there any personal belongings in plain view?
- Is the vehicle locked?
- Have all suitable steps been taken to prevent auto crime?

Figure 3 provides a comparison by year for the number of vehicles viewed or issued a notice.

**Figure 3: Richmond Detachment Stolen Auto Recovery/Lock Out Auto Crime Vehicles Viewed/Issued a Notice**

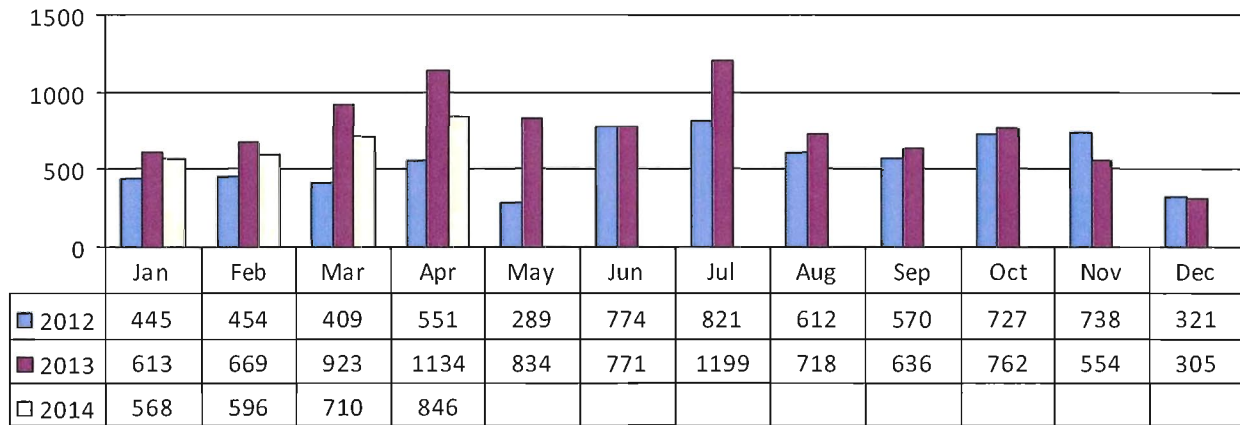


***Richmond Detachment Speed Watch Statistics***

Speed Watch promotes safe driving habits by alerting drivers of their speed in school zones and on roadways. Trained volunteers are equipped with radar and a speed watch reader board that gives drivers instant feedback regarding their speed. The volunteers record the licence plate number and the speed, and a letter is sent to the vehicle’s registered owner when there is an infraction. The letter includes the date, time, and location and what the penalties would be if the driver had received a violation ticket.

Figure 4 provides a comparison by year of the number of letters sent.

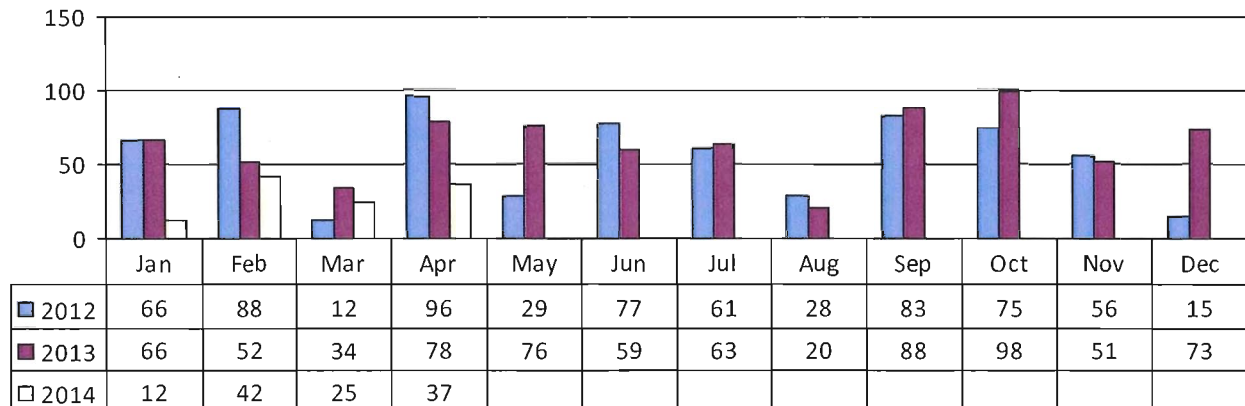
**Figure 4: Richmond Detachment Speed Watch  
Vehicles Viewed with Letters Sent**



***Richmond Detachment Distracted Driver Statistics***

While volunteers are doing bike/foot patrols or on Speed Watch duty, they note drivers that are on their cell phones; talking or texting, using other electronic devices, reading a newspaper, shaving or putting on makeup. The registered owner of the vehicle is sent a letter with the date, time and location. Also included in the letter is the type of driving infraction and amount the fine would be had the driver received a violation ticket. Figure 5 provides a comparison by year for the number of letters sent.

**Figure 5: Richmond Detachment Distracted Drivers  
Number of Letters Sent**



**Community Police Volunteer Bike and Foot Patrol Program**

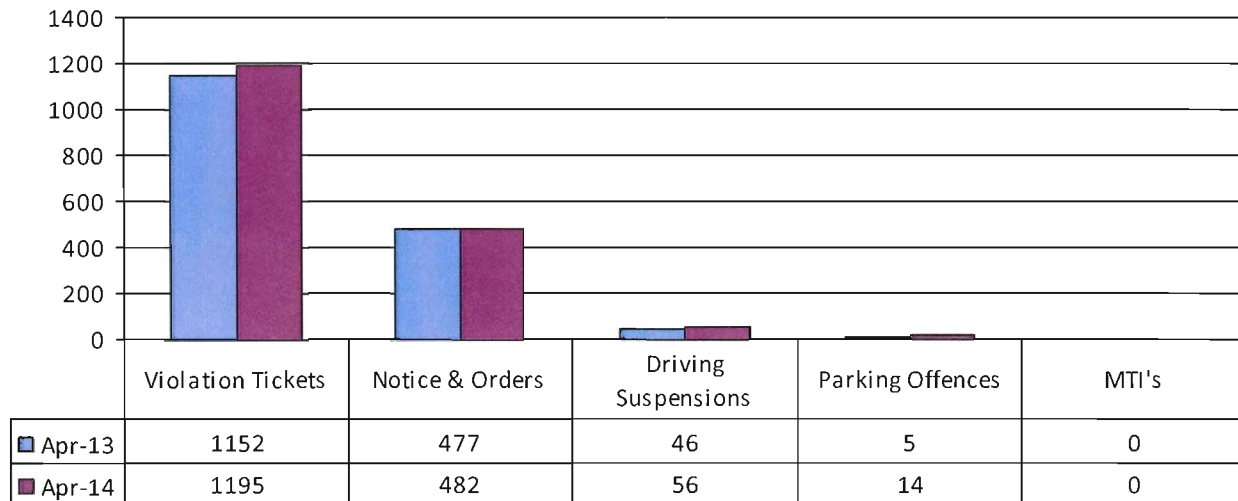
In April 2014, there were 9 bike patrols totalling 45 hours, as well as 12 foot/van patrols totalling 130 hours. The volunteers assisted the public with directions and general questions, witnessed minor vehicle collisions, and offered assistance. They also reminded jaywalkers to use the crosswalks, noted any distracted drivers, and used palm pilots to run licence plates to see if any vehicles were stolen. During their patrols, the volunteers visited local parks and schools, to make sure that everything was secure and looked for possible grow ops and abandoned houses.

Road Safety Unit

**Road Safety Unit Service Demand – Month to Month Comparison**

Figure 6 compares the Road Safety Unit tickets, categorized by type, for April 2013 and April 2014. In April 2013 there were a total of 1,680 tickets compared to 1,747 in April 2014, an increase of 16.7%. This increase is due to members in the traffic section being able to focus more attention on these tasks as there were no major traffic incidents in the month of April.

**Figure 6: Service Demand Month-to-Month Comparison**



Victim Services

From April 1, 2014 to April 30, 2014, Richmond RCMP Victim Services provided services to 28 new clients and attended 12 crime and trauma scenes, in addition to maintaining an active caseload of 138 ongoing files.

Victim Services responded to a number of medical related sudden deaths of elderly persons and a number of family disputes. Victim services also assisted a victim of a sizeable fraud case involving an internet scam.

**Financial Impact**

“None”

**Conclusion**

For the month of April 2014, policing in Richmond was relatively stable with emphasis being placed on proactive policing measures. The few serious incidences that occurred in April are still under investigation by the Richmond RCMP serious crime unit.



Lainie Goddard  
Manager, RCMP Administration  
(604-207-4767)

- Att. 1: Crime Prevention Newsletter
- 2: Business Link Newsletter
- 3: Crime Stats
- 4: Crime Maps



RICHMOND RCMP

1st Qrt. 2014

# CRIME PREVENTION

WORKING TOGETHER TO PREVENT CRIME

NEWSLETTER

## The Benefits of Knowing Your Neighbours

**"Hi, my name is Elizabeth; I live next door. Welcome to our neighbourhood."**

It's become common to live next door to someone for years and never get to know them. However, there are advantages to getting to know your neighbours, no matter how long you've lived in your home. You can help create a safer community if you have at least met your immediate neighbours. After all, they are the people closest to your home and a watchful neighbour can be your best burglar alarm. If there is suspicious people or activity, your neighbours may be the first to see it and call the Police.

**In 2014, 80% of all residential break and enters have occurred in non-Block Watch neighbourhoods.** The Richmond RCMP would like to encourage you to start a Block Watch group or join an established group in your neighbourhood. Block Watch is a free, community-based, crime prevention program aimed at helping residents organize their neighbourhoods to help prevent crime in the community. For more information, please visit [www.richmond.ca/blockwatch](http://www.richmond.ca/blockwatch) or call **604 713-2340**.

Safe neighbourhoods are made by people getting to know each other and looking out for one another. Join Block Watch today!

## When and How to Call the Police

If you discover a crime in progress and the suspect is present, call **9-1-1**

If the suspect has left and the crime has already occurred, do not touch anything and call the Police non-emergency number at **604-278-1212**

## Attention Apartment/Condo Managers

The Richmond RCMP Crime Prevention Section would like to offer you "No Key-No Entry" stickers for your complexes. The stickers are to be posted on glass entry doors to empower residents/tenants to stop unauthorized people from entering your buildings.

To request "No Key-No Entry" stickers, please email your contact information, mailing address, the property address where the stickers will be displayed, and how many stickers you require for your building(s) to [blockwatch@richmond.ca](mailto:blockwatch@richmond.ca)

# NO KEY— NO ENTRY



## DO NOT HOLD DOOR OPEN FOR VISITORS

*Safe Homes, Safe Communities*

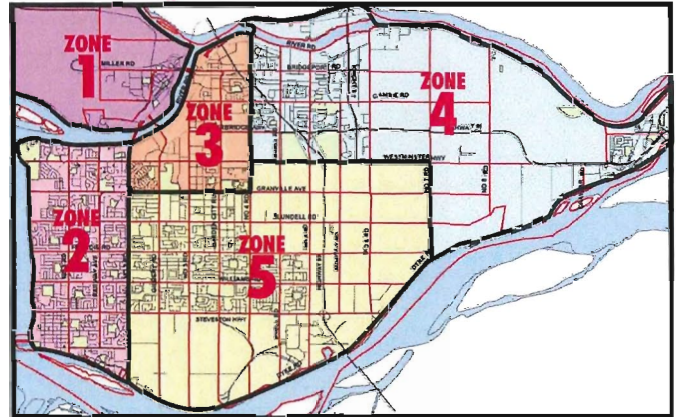





## Richmond Residential Break and Enters

|          | Zone 1 | Zone 2 | Zone 3 | Zone 4 | Zone 5 |
|----------|--------|--------|--------|--------|--------|
| Jan 2011 | 0      | 26     | 23     | 9      | 32     |
| Jan 2012 | 0      | 17     | 6      | 4      | 26     |
| Jan 2013 | 0      | 28     | 13     | 10     | 42     |
| Jan 2014 | 2      | 24     | 13     | 5      | 34     |
| Feb 2011 | 0      | 8      | 6      | 3      | 29     |
| Feb 2012 | 0      | 18     | 5      | 6      | 19     |
| Feb 2013 | 0      | 16     | 12     | 6      | 35     |
| Feb 2014 | 0      | 14     | 19     | 11     | 23     |
| Mar 2011 | 0      | 13     | 7      | 8      | 29     |
| Mar 2012 | 0      | 22     | 5      | 6      | 19     |
| Mar 2013 | 0      | 12     | 13     | 6      | 19     |
| Mar 2014 | 1      | 22     | 19     | 8      | 28     |
| Apr 2011 | 0      | 13     | 4      | 5      | 18     |
| Apr 2012 | 1      | 12     | 11     | 1      | 11     |
| Apr 2013 | 0      | 4      | 12     | 5      | 20     |
| May 2011 | 0      | 4      | 6      | 7      | 14     |
| May 2012 | 0      | 12     | 6      | 5      | 18     |
| May 2013 | 0      | 3      | 10     | 14     | 3      |
| Jun 2011 | 0      | 9      | 6      | 3      | 13     |
| Jun 2012 | 0      | 14     | 4      | 2      | 20     |
| Jun 2013 | 0      | 11     | 9      | 4      | 12     |
| Jul 2011 | 0      | 11     | 10     | 8      | 18     |
| Jul 2012 | 0      | 14     | 4      | 2      | 22     |
| Jul 2013 | 0      | 13     | 14     | 8      | 28     |
| Aug 2011 | 0      | 7      | 12     | 5      | 10     |
| Aug 2012 | 0      | 12     | 4      | 2      | 24     |
| Aug 2013 | 0      | 12     | 10     | 2      | 23     |
| Sep 2011 | 0      | 7      | 2      | 1      | 9      |
| Sep 2012 | 0      | 10     | 4      | 3      | 13     |
| Sep 2013 | 0      | 8      | 16     | 8      | 15     |
| Oct 2011 | 0      | 6      | 3      | 1      | 10     |
| Oct 2012 | 0      | 18     | 11     | 1      | 29     |
| Oct 2013 | 0      | 30     | 18     | 3      | 16     |
| Nov 2011 | 10     | 33     | 11     | 7      | 36     |
| Nov 2012 | 0      | 12     | 10     | 7      | 24     |
| Nov 2013 | 0      | 11     | 24     | 4      | 18     |
| Dec 2011 | 0      | 10     | 10     | 2      | 15     |
| Dec 2012 | 0      | 14     | 12     | 5      | 18     |
| Dec 2013 | 3      | 12     | 18     | 2      | 14     |

### Zone Map



The above map outlines the five zones in Richmond. The chart to the left provides details on the number of Residential B&Es that have occurred in each zone.

After a Break and Enter, if your residence/business has been broken into, do not touch anything. If a suspect is present, call 9-1-1. If no suspect is present, call the Police non-emergency number at 604-278-1212. You will be asked for a description and the serial numbers of any stolen items.

Visit [www.richmond.ca/crime](http://www.richmond.ca/crime) for an interactive web page where you can view Richmond neighbourhood maps for current crime summaries.

For home security tips, visit [www.richmond.ca/homesafety](http://www.richmond.ca/homesafety)



### Point of Entry Breakdown (March 2013)

|               |   |
|---------------|---|
| <b>Zone 1</b> | 1 break and enter thru a window   |
| <b>Zone 2</b> | 22 break and enters: 5 thru doors; 4 thru unlocked doors; 9 thru windows, 1 thru an unlocked window, 3 thru sliding doors                         |
| <b>Zone 3</b> | 19 break and enters: 5 thru doors; 4 thru windows; 5 thru sliding doors; 5 other points of entry  |
| <b>Zone 4</b> | 8 break and enters: 3 thru doors; 1 thru an unlocked door; 3 thru windows; 1 thru an unlocked sliding door  |
| <b>Zone 5</b> | 28 break and enters: 11 thru doors, 5 thru unlocked doors, 3 thru windows, 2 thru unlocked windows; 3 thru sliding doors, 4 other points of entry |

### Email Break & Enter Alerts

Email your name and street address to: [blockwatch@richmond.ca](mailto:blockwatch@richmond.ca) to receive an email alert should a residential break and enter occur in your neighbourhood.



## RICHMOND RCMP CRIME PREVENTION UNIT

1st Qrt. 2014

**BUSINESS LINK**

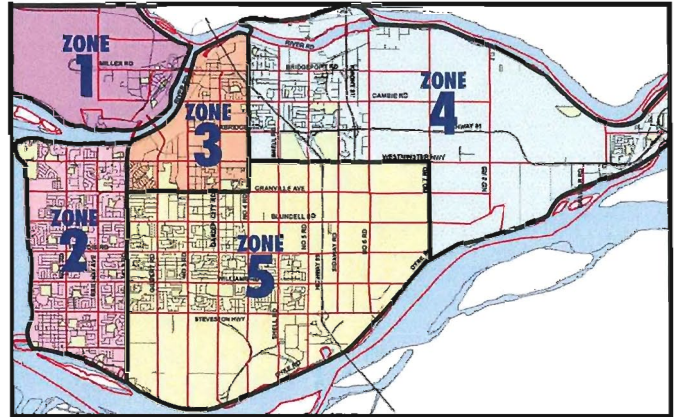
WORKING TOGETHER TO PREVENT CRIME

NEWSLETTER

## Richmond Commercial Break and Enters

|          | Zone 1 | Zone 2 | Zone 3 | Zone 4 | Zone 5 |
|----------|--------|--------|--------|--------|--------|
| Jan 2011 | 0      | 0      | 7      | 10     | 2      |
| Jan 2012 | 0      | 4      | 6      | 3      | 11     |
| Jan 2013 | 2      | 3      | 21     | 11     | 5      |
| Jan 2014 | 0      | 2      | 7      | 11     | 2      |
| Feb 2011 | 0      | 6      | 12     | 11     | 3      |
| Feb 2012 | 0      | 1      | 9      | 5      | 2      |
| Feb 2013 | 0      | 5      | 17     | 7      | 3      |
| Feb 2014 | 0      | 2      | 10     | 12     | 5      |
| Mar 2011 | 0      | 2      | 11     | 20     | 5      |
| Mar 2012 | 0      | 1      | 11     | 7      | 3      |
| Mar 2013 | 1      | 1      | 19     | 21     | 0      |
| Mar 2014 | 0      | 0      | 5      | 5      | 0      |
| Apr 2011 | 0      | 4      | 11     | 9      | 2      |
| Apr 2012 | 0      | 3      | 15     | 20     | 5      |
| Apr 2013 | 0      | 2      | 9      | 16     | 1      |
| May 2011 | 0      | 1      | 9      | 8      | 6      |
| May 2012 | 0      | 6      | 3      | 8      | 3      |
| May 2013 | 0      | 3      | 10     | 14     | 3      |
| Jun 2011 | 0      | 1      | 6      | 4      | 9      |
| Jun 2012 | 0      | 5      | 10     | 10     | 6      |
| Jun 2013 | 0      | 3      | 12     | 6      | 1      |
| Jul 2011 | 1      | 2      | 11     | 7      | 4      |
| Jul 2012 | 0      | 4      | 12     | 19     | 8      |
| Jul 2013 | 0      | 1      | 6      | 5      | 0      |
| Aug 2011 | 0      | 1      | 14     | 6      | 3      |
| Aug 2012 | 0      | 3      | 15     | 16     | 8      |
| Aug 2013 | 0      | 0      | 8      | 9      | 2      |
| Sep 2011 | 0      | 2      | 12     | 5      | 3      |
| Sep 2012 | 1      | 0      | 18     | 17     | 1      |
| Sep 2013 | 0      | 0      | 6      | 6      | 1      |
| Oct 2011 | 0      | 0      | 14     | 13     | 6      |
| Oct 2012 | 0      | 0      | 26     | 11     | 6      |
| Oct 2013 | 0      | 1      | 7      | 9      | 1      |
| Nov 2011 | 0      | 2      | 10     | 2      | 4      |
| Nov 2012 | 0      | 2      | 18     | 27     | 12     |
| Nov 2013 | 0      | 1      | 5      | 4      | 3      |
| Dec 2011 | 0      | 3      | 9      | 2      | 11     |
| Dec 2012 | 3      | 5      | 22     | 24     | 6      |
| Dec 2013 | 0      | 2      | 7      | 6      | 1      |

## Criminal Activity Map



The above map outlines the five zones in Richmond. The chart to the left provides details on the number of Commercial B&Es that have occurred in each zone.

Visit [www.richmond.ca/crime](http://www.richmond.ca/crime) for an interactive web page where you can view Richmond neighbourhood maps for current crime summaries and business security tips.

For information on how to improve the security of your business, please visit: [www.richmond.ca/businesslink](http://www.richmond.ca/businesslink)

Report all suspicious and criminal activity to the Police. If a suspect is present, call 9-1-1.

If no suspect is present, call the Police non-emergency number at 604-278-1212.

### Email Break & Enter Alerts

To receive email alerts of neighbourhood commercial break and enters, register your business name and street address at:  
[RCMP\\_Business\\_Link@richmond.ca](mailto:RCMP_Business_Link@richmond.ca)



### Point of Entry Breakdown (March 2014)

|               |  |
|---------------|--|
| <b>Zone 1</b> | 0 break and enters   |
| <b>Zone 2</b> | 0 break and enters   |
| <b>Zone 3</b> | 5 break and enters: point of entry: 5 thru doors                             |
| <b>Zone 4</b> | 5 break and enters: point of entry: 3 thru doors and 2 other points of entry |
| <b>Zone 5</b> | 0 break and enters   |



 Richmond



## APRIL 2014 STATISTICS

This chart identifies the monthly totals for all founded Criminal Code incidents, excluding Traffic Criminal Code. Based on Uniform Crime Reporting (UCR) scoring, there are three categories: (1) Violent Crime, (2) Property Crime, and (3) Other Criminal Code. Within each category, particular offence types are highlighted in this chart. In addition, monthly totals for Controlled Drugs and Substances Act (CDSA) incidents are included.

The Average Range data is based on activity in a single month over the past 5 years. If the current monthly total for an offence is above average, it will be noted in red, while below-average numbers will be noted in blue.

Year-to-Date percentage increases of more than 10% are marked in red, while decreases of more than 10% are blue. Please note that percentage changes are inflated in categories with small numbers (e.g.: Sexual Offences).

|  | CURRENT MONTH | 5-YR AVERAGE | 5-YR AVERAGE RANGE | YEAR-TO-DATE TOTALS |             |               |                          |
|--|---------------|--------------|--------------------|---------------------|-------------|---------------|--------------------------|
|  | Apr-14        | April        |                    | 2013                | 2014        | % Change      | Change in # of Incidents |
| <b>VIOLENT CRIME</b><br>(UCR 1000-Series Offences)       | <b>95</b>     | <b>114</b>   | <b>96-132</b>      | <b>362</b>          | <b>403</b>  | <b>11.3%</b>  | <b>41</b>                |
| <i>Robbery</i>   | <b>2</b>      | 7            | 4-9                | 25                  | 24          | -4.0%         | -1                       |
| <i>Assault</i>   | <b>33</b>     | 44           | 34-55              | 141                 | 137         | -2.8%         | -4                       |
| <i>Assault w/ Weapon</i>                                 | <b>6</b>      | 10           | 7-13               | 34                  | 38          | 11.8%         | 4                        |
| <i>Sexual Offences</i>                                   | <b>12</b>     | 6            | 3-8                | 19                  | 31          | 63.2%         | 12                       |
| <b>PROPERTY CRIME</b><br>(UCR 2000-Series Offences)      | <b>691</b>    | <b>581</b>   | <b>533-630</b>     | <b>2308</b>         | <b>2716</b> | <b>17.7%</b>  | <b>408</b>               |
| <i>Business B&amp;E</i>                                  | <b>24</b>     | 38           | 31-46              | 170                 | 119         | -30.0%        | -51                      |
| <i>Residential B&amp;E</i>                               | <b>47</b>     | 39           | 36-42              | 250                 | 283         | 13.2%         | 33                       |
| <i>MV Theft</i>  | 24            | 26           | 19-33              | 86                  | 100         | 16.3%         | 14                       |
| <i>Theft From MV</i>                                     | <b>264</b>    | 160          | 117-203            | 503                 | 921         | 83.1%         | 418                      |
| <i>Theft</i>   | 107           | 94           | 81-108             | 405                 | 404         | -0.2%         | -1                       |
| <i>Shoplifting</i>                                       | 63            | 55           | 48-63              | 297                 | 226         | -23.9%        | -71                      |
| <i>Fraud</i>   | 46            | 44           | 36-52              | 172                 | 195         | 13.4%         | 23                       |
| <b>OTHER CRIMINAL CODE</b><br>(UCR 3000-Series Offences) | <b>153</b>    | <b>166</b>   | <b>148-183</b>     | <b>557</b>          | <b>642</b>  | <b>15.3%</b>  | <b>85</b>                |
| <i>Arson - Property</i>                                  | 4             | 5            | 2-7                | 4                   | 17          | 325.0%        | 13                       |
| <b>SUBTOTAL</b><br>(UCR 1000- to 3000-Series)            | <b>939</b>    | <b>861</b>   | <b>772-950</b>     | <b>3227</b>         | <b>3758</b> | <b>16.5%</b>  | <b>531</b>               |
| <b>DRUGS</b><br>(UCR 4000-Series Offences)               | <b>45</b>     | <b>61</b>    | <b>48-73</b>       | <b>231</b>          | <b>189</b>  | <b>-18.2%</b> | <b>-42</b>               |

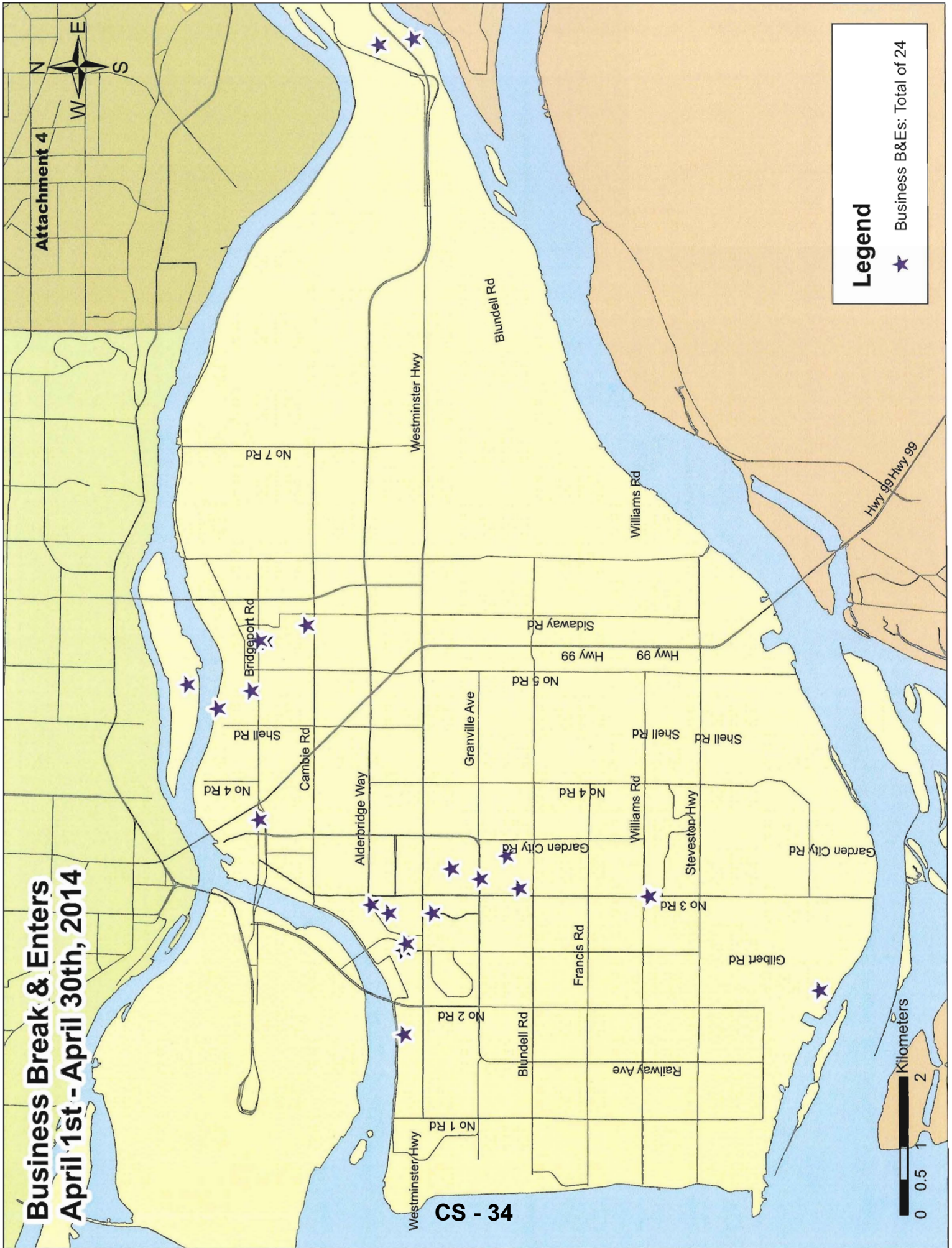
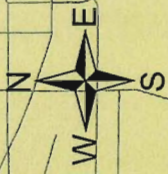
Prepared by Richmond RCMP.

Data collected from PRIME on 2014-05-19. Published 2014-05-19.

This data is operational and subject to change. This document is not to be copied, reproduced, used in whole or part or disseminated to any other person or agency without the consent of the originator(s).

# Business Break & Enters April 1st - April 30th, 2014

Attachment 4



CS - 34

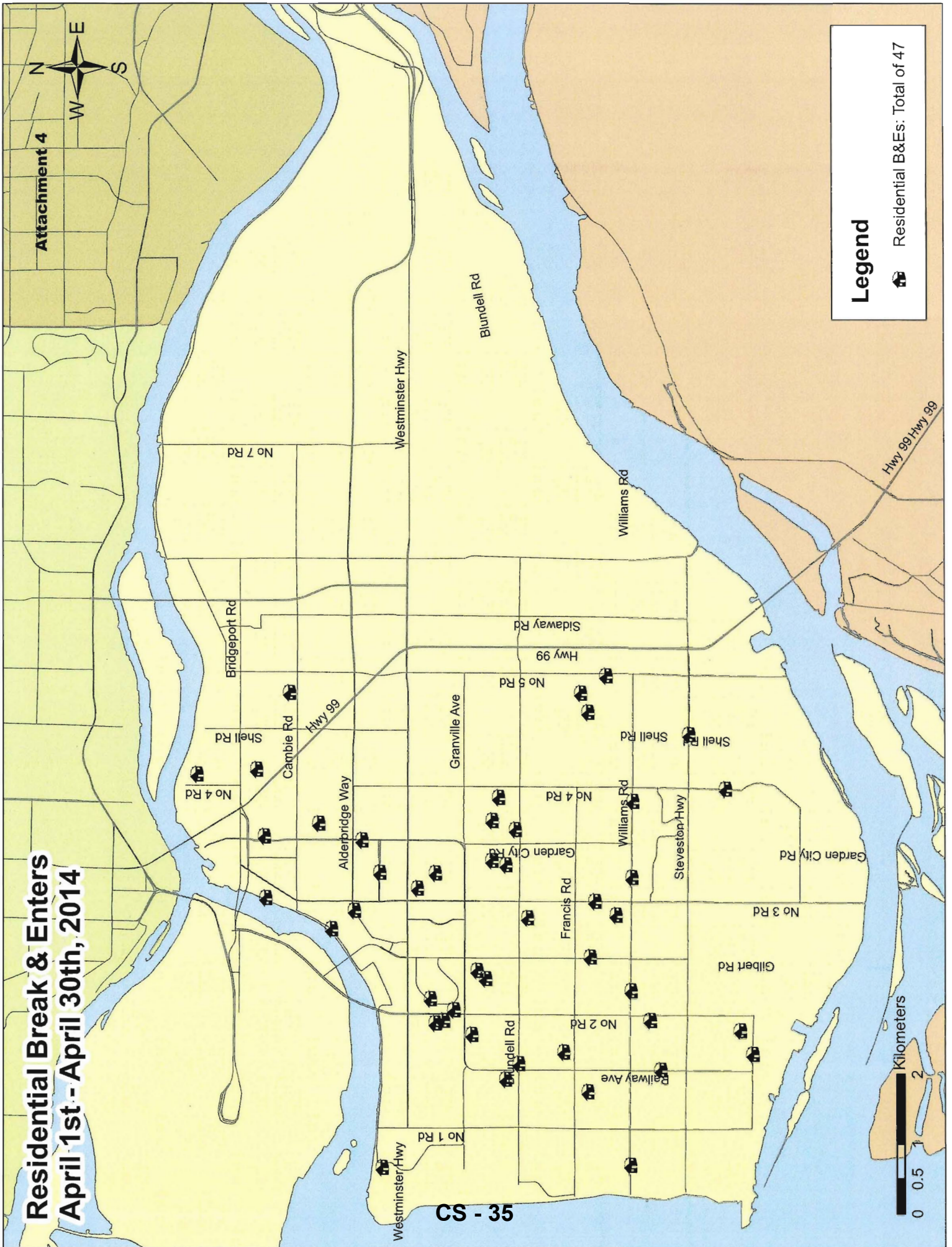
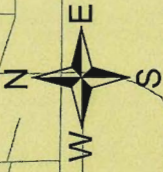
## Legend

★ Business B&Es: Total of 24

Kilometers  
0 0.5 1 2


# Residential Break & Enters April 1st - April 30th, 2014

Attachment 4



CS - 35

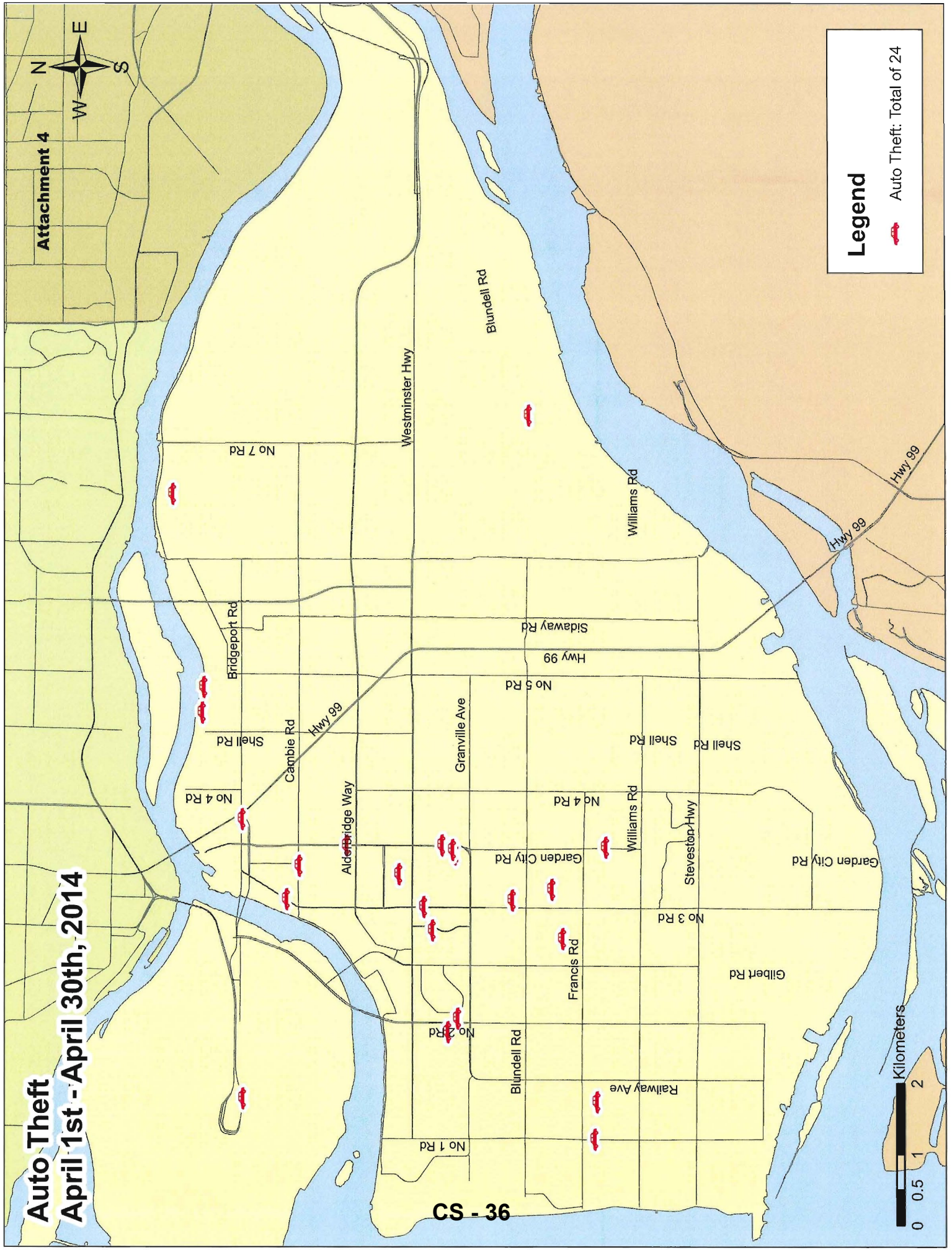
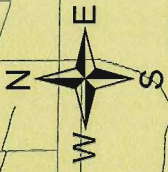
## Legend

 Residential B&Es: Total of 47

 Kilometers  
0 0.5 1 2


# Auto Theft April 1st - April 30th, 2014

Attachment 4



CS - 36

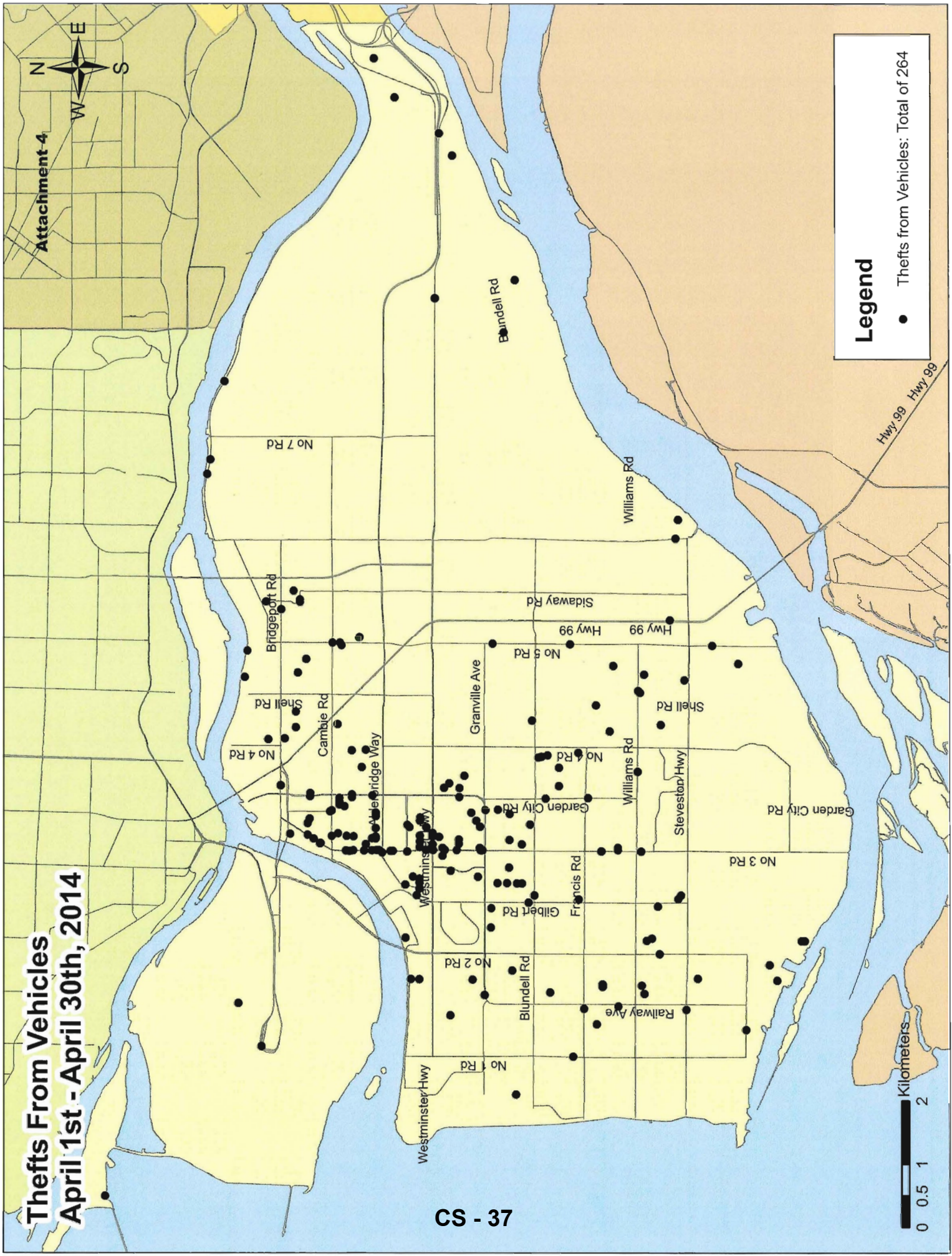
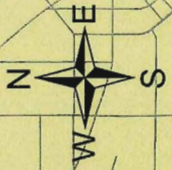
## Legend

 Auto Theft: Total of 24

 Kilometers  
0 0.5 1 2

# Thefts From Vehicles April 1st - April 30th, 2014

Attachment 4



**Legend**

- Thefts from Vehicles: Total of 264

