



City of Richmond

Report to Committee

To: Parks, Recreation and Cultural Services Committee **Date:** March 4, 2024

From: Todd Gross, Director, Parks Services **File:** 06-2345-20-N3RP1/Vol 01

Re: **No. 3 Road Bark Park Proposed Enhancements**

Staff Recommendation

That the No. 3 Road Bark Park enhancements, as outlined in the staff report titled “No. 3 Road Bark Park Proposed Enhancements”, dated March 4, 2024, from the Director, Parks Services, be approved.

Todd Gross
 Director, Parks Services
 (604-247-4942)

Att. 4

REPORT CONCURRENCE		
ROUTED TO:	CONCURRENCE	CONCURRENCE OF GENERAL MANAGER
Engineering	<input checked="" type="checkbox"/>	
Transportation	<input checked="" type="checkbox"/>	
Finance	<input checked="" type="checkbox"/>	
SENIOR STAFF REPORT REVIEW	INITIALS:	APPROVED BY CAO

Staff Report

Origin

At the Regular Council meeting held on July 24, 2023, a delegation expressed concerns for dogs, pedestrians and cyclists at the No. 3 Road Bark Park. At that same meeting, a referral motion was put forward and adopted that:

Staff examine safety concerns of users of the No. 3 Road Bark Park and report back.

As a follow up, at the Parks, Recreation and Cultural Services Committee meeting held on September 26, 2023, a petition was submitted titled “Safety Improvements to Bark Park”.

The purpose of this report is to respond to the above-mentioned referral, provide an overview of the No. 3 Road Bark Park Safety Enhancements public engagement process and outcomes as well as the resulting No. 3 Road Bark Park proposed enhancements for Council consideration.

This report supports Council’s Strategic Plan 2022-2026 Focus Area #1 Proactive in Stakeholder and Civic Engagement:

Proactive stakeholder and civic engagement to foster understanding and involvement and advance Richmond’s interests.

1.3 Increase the reach of communication and engagement efforts to connect with Richmond’s diverse community.

1.4 Leverage a variety of approaches to make civic engagement and participation easy and accessible.

This report supports Council’s Strategic Plan 2022-2026 Focus Area #6 A Vibrant, Resilient and Active Community:

Vibrant, resilient and active communities supported by a wide variety of opportunities to get involved, build relationships and access resources.

6.2 Enhance the City’s network of parks, trails and open spaces.

Background

The No. 3 Road Bark Park is located along the South Dyke Trail between No. 3 Road and the Crown Packaging site located at 13911 Garden City Road. It was originally developed in 2001, as an informal dog off-leash area where multiple user groups including dog-owners, dogs off-leash, pedestrians, rollers (wheelchairs and strollers), and cyclists shared the space without formal delineation or separation.

The dog park was recently upgraded as a result of dike raising which took place between August 2021 to November 2022, with maintenance and deficiencies continuing into 2023. Site enhancements included upgrades to the west entry area, new plant beds, refurbishment of existing public art, introduction of new public art, additional seating, a renewed location for the gathering area, and a raised and widened dike trail. In addition, general improvements were

made to site grading, lawn areas, pathway surfacing and directional signage. A kiosk with a bulletin board was added during this time for site users to share information and build community connections. Upon request by site user groups and in consultation with the public, shade trees were planted by volunteers in October 2022. Site user group representatives and the general public were consulted throughout the 2021–2023 site improvement process.

No alterations were made to the use or operations of the site as part of the 2021-2023 site upgrades. Cyclists continue to be directed off of the dike trail to a multi-use trail in the northern half of the site via signage. Dogs off-leash are permitted to use all areas and trails in and along the site.

Analysis

Safety Incident Reports

There have not been any formal safety incident reports regarding conflicts between cyclists, rollers, pedestrians and/or dogs and/or their owners at the No. 3 Road Bark Park within the last five years through the Parks Services Customer Services System, Bylaws or the Richmond RCMP. As evidenced by the *Safety Improvements to Bark Park* petition and No. 3 Road Bark Park Safety Enhancement public engagement process, however, it is evident that there are increasing safety concerns amongst site users related to the varied uses at the No. 3 Road Bark Park, lack of separation between those uses and potential conflicts between them.

Best Practice Studies for Dogs Off-Leash Areas

Best practice studies for dogs off-leash areas were conducted to guide the development of safety enhancement options for inclusion in the No. 3 Road Bark Park Safety Enhancement public engagement process. These best practice studies included:

- City of Surrey, *Dog Off Leash Area Strategy 2012-2021*;
- The Vancouver Board of Parks and Recreation, *People, Parks & Dogs: a strategy for sharing Vancouver's parks*, dated October 2017; and
- Metro Vancouver Regional Parks, *Best Management Practice for Dogs*, dated February 2011.

All of the best practice documents recommend clear separation from dogs off-leash areas and other uses, such as multi-use trails, as well as clear delineation of dogs off-leash areas with fencing. More specifically, Metro Vancouver Regional Parks, *Best Management Practice for Dogs* suggests that:

- Multi-use, leash-optional trails should be avoided.
- Leash-optional areas should either be located away, or segregated by appropriate barriers or fencing, from playing fields, playgrounds, swimming beaches and other recreational uses of the park (especially those involving children).
- Off-leash dog areas follow current best design practices such as inclusion of perimeter fencing and/or natural buffers (e.g., hedging) and staged entry gates that include a vestibule for securely (un)leashing dogs.

All of the safety enhancement options that were developed for input during the public engagement process follow best practices and include clear separation between multi-use trails and dogs off-leash areas with fencing.

Public Engagement Process

In response to the referral made at the Regular Council meeting held on Monday, July 24, 2023, and the *Safety Improvements to Bark Park* petition, public engagement was conducted from Tuesday, November 28, 2023, to Sunday, January 7, 2024. The public engagement was focused on gaining insight into site user concerns and input on various safety enhancement options. The public engagement consisted of two drop-in style, in-person public open houses and online engagement via Let's Talk Richmond. The public open houses were held on Tuesday, November 28, 2023, from 5:00–7:00 p.m. at Richmond City Hall, and Saturday, December 2, 2023, from 10:00 a.m.–12:00 p.m. at the No. 3 Road Bark Park. The online engagement ran from Tuesday, November 28, 2023, to Sunday, January 7, 2024.

The open houses and online engagement were advertised through a news release, letters to Richmond *Safety Improvements to Bark Park* petitioners, the City's social media platforms, and signs installed on site. Key stakeholder groups, such as the Bark Park Richmond Facebook group, Richmond Active Transportation Committee, Walk Richmond and HUB Cycling – Richmond/YVR Local Committee, were sent personal invitations and asked to advertise the engagement opportunities to their broader networks. In addition, anyone registered with Let's Talk Richmond received an email notification about the opportunity to provide input online.

The open houses and online engagement included information boards containing project background information and safety enhancement options for the No. 3 Road Bark Park, as well as a survey seeking input on said safety enhancement options. Staff were in attendance at the open houses to answer questions, engage in discussion and receive feedback.

Below is a description of the safety enhancement options that were developed for input during the public engagement process. See also Attachment 1 for the No. 3 Road Bark Park Public Engagement Information Boards, which include illustrations of the safety enhancement options described below.

- Option A – converting the section of dike located along the No. 3 Road Bark Park to a multi-use trail, adding a fence along the north edge of the dike trail and making the remainder of the site, north of the fence, a dogs off-leash area.
- Option B – converting the section of dike located along the No. 3 Road Bark Park to a multi-use trail, making the existing multi-use trail a pedestrian and dogs on-leash path (no cycling permitted), and having the open lawn area between the two trails fully fenced with three separate zones for small dogs, big dogs and all dogs.
- Option C – adding a fence along the south edge of the existing multi-use trail and making the remainder of the site, south of the fence and including the dike trail, a dogs off-leash area. In this option, the existing multi-use trail would continue to permit cycling but require dogs to be on-leash.

Public Engagement Results

The safety enhancement options that were presented to the public for feedback during the engagement process were intended to offer points of discussion and spark dialog. From the input received via conversations at the public open houses and comments provided on the public engagement survey, it was clear that there are strong and varied opinions among site users about how safe the site currently is and how the site should be modified, if at all. In addition to the safety enhancement options presented by staff, a range of ideas and proposals were brought forward by site users. These suggestions ranged from leaving the site as is to rerouting cyclists around the site on roadways, with a wide variety of options between. As part of the overall No. 3 Road Bark Park safety concern and enhancement review process, staff further considered and analyzed these options as well as those presented on the *Safety Improvements to Bark Park* petition. Organized from least to greatest shift in site uses, below are descriptions of the additional No. 3 Road Bark Park options that were brought forward by site users.

- Additional Option 1: Status Quo – leaving the site as it currently is.
- Additional Option 2: Minor Safety Enhancements – adding more legible directional signage and bollards to encourage cyclists to reduce their speed as they enter the site.
- Additional Option 3: Bike Chicane – adding bike chicanes to encourage cyclists to reduce their speed and/or dismount as they enter the site.
- Additional Option 4: Fence Along Existing Multi-use Trail – adding a fence down the centre of the existing multi-use trail, within the northern half of the site, to separate cyclists, pedestrians and rollers from dogs off-leash.
- Additional Option 5: New Multi-use Trail – creating a new multi-use trail along the north edge of the site with a fence along its south edge to separate cyclists, pedestrians and rollers from dogs off-leash.
- Additional Option 6: Rerouting Cyclists Along Roadways – rerouting cyclists around the No. 3 Road Bark Park along No. 3, Finn and Garden City Roads.

See Attachment 2 for a Comparative Analysis of the No. 3 Road Bark Park Options, which examines all of the options described in this report, including the safety enhancement options presented for public input and those raised by site users.

Site User Values and Concerns

Through discussions at the public open houses and written comments provided on the survey, staff gained further insight into what site users currently value about the No. 3 Road Bark Park and their concerns related to safety. The following recurrent values and concerns were observed during the public engagement process:

- Many site users like the site the way it is now and want minimal change.
- Dog owners appreciate the opportunity to walk with their dogs off-leash on a looped trail.
- Many people like to walk their dogs off-leash along the dike trail because it is a unique experience, allowing dogs to run freely and have access to the river.*
- Many dog owners, on the other hand, have safety concerns about the free access to the river and would appreciate some control measures to limit access to it.*

- The cycling trail is a recreational and major regional commuter route used by people biking the dike trail system and connecting to/from the George Massey Tunnel shuttle for cyclists.
- Some dog owners would like to see separate small/big dog areas.
- There are concerns among dog-owners and pedestrians about the speed of cyclists and electric micro mobility devices through the area.
- There are concerns among pedestrians and cyclists about walking/cycling through the dog off-leash areas.

**Note that due to the nature of the Fraser River's hydrology, fluctuating tides and strong river currents, waterfront conditions can be unsafe. For these reasons, swimming in the Fraser River is not permitted across Richmond.*

Public Engagement Survey Results

Between the public open houses and online engagement, 225 surveys were completed. The vast majority of respondents (90.9 per cent) are frequent site users that visit the area once a month or more. Just over 50 percent of respondents (57.9 per cent) primarily visit the area by car and just over 70 percent of respondents (73.7 per cent) do not typically bike to the site. The majority of respondents (71 per cent) are dog owners.

Out of the safety enhancement options presented, Option A, as previously described in this report, received the greatest support (54 per cent) and the lowest opposition (37 per cent). Option B received the least support (38 per cent) and highest opposition (52 per cent). Option C received the second greatest support (41.5 per cent) and second highest opposition (49.5 per cent). Note that respondents were able to vote and provide feedback on multiple options, therefore the percentages split between the options add up to more than 100 per cent.

Please refer to Attachment 3, No. 3 Road Bark Park Safety Enhancements Public Engagement Results, for a full detailed report on the survey responses, including comments.

No. 3 Road Bark Park Proposed Enhancements

As there was no clear preference or consensus amongst site users on the three options presented during the public engagement process, enhancements for the No. 3 Road Bark Park that address the majority of feedback were developed. Generation of the proposed enhancements took into consideration the survey results, site user values and concerns, best practice studies for dogs off-leash areas, as well as site constraints and background research. The enhancements, as illustrated in Attachment 4 – No. 3 Road Bark Park Proposed Enhancements, aim to enhance safety for all site users, provide opportunities for dog owners to walk with their dogs off-leash on a looped trail and along the riverfront, while also minimizing impacts to the dike crest and existing trees.

The No. 3 Road Bark Park proposed enhancements consist of (from south to north):

- A minimum four-metre wide multi-use gravel trail along the dike for cyclists, pedestrians, rollers and dogs on-leash, which would introduce a continuation of the

existing four-metre wide multi-use dike trails to the west and east of the No. 3 Road Bark Park site.

- A split-rail fence along the north side of the multi-use dike trail, which would not intrude into the noted widths of the trails on either side of it and would not require below-grade footings nor encroachment into the existing dike crest, which is crucial to maintaining the integrity of the dike and the flood protection it provides.
- A dogs off-leash zone encompassing the entire site north of the split-rail fence.
- Creation of a maximum two-metre wide trail on the north side of the split-rail fence, within the dog off-leash area, to create a looped pathway system that would also allow people to walk with their dogs off-leash along the riverfront. Note that development of this trail would require expansion of the existing dike trail and sloped landscape area on the north side of it by almost by almost two metres.

The proposed enhancements also include:

- A connection located just east of the No. 3 Road pump station to allow cyclists using Dyke Road to safely transition to the multi-use dike trail and bypass parking lots.
- New directional and etiquette signage that would include reminders for e-scooters that they are not permitted on unpaved trails.

It should be noted that the proposed enhancements do not include river access from the dogs off-leash area, which is an opportunity currently valued by some site users. As previously noted, due to the nature of the Fraser River's hydrology, fluctuating tides and strong river currents, waterfront conditions can be unsafe. For these reasons, swimming in the Fraser River is not permitted across Richmond.

The enhancements also do not currently show separated small/big dog zones within the dogs off-leash area. Separation between small and big dogs was supported by a minority of engaged site users. The majority of site users wanted to maximize the open space within the dogs off-leash area. Staff will continue to monitor the need to separate small and big dogs and can add separated areas with fencing in the future, as needed.

Next Steps

Should Council approve the proposed enhancements, staff will develop a detailed design, with implementation expected to take place in summer/fall 2024. Implementation of the enhancements can be funded from a previously Council approved project, 2024 Parks General Development.

The community and key stakeholders that represent a broad range of site users, including pedestrians, dog walkers and cyclists, will be consulted and regularly communicated with throughout the detailed design and implementation stages. Updates and consultations will be conducted via letters to *Safety Improvements to Bark Park* petitioners, on Let's Talk Richmond, signs on site, the City's website, and the City's social media platforms. In addition, the Bark Park Richmond Facebook group, Richmond Active Transportation Committee, Walk Richmond and HUB Cycling – Richmond/YVR Local Committee will continue to be regularly contacted via email throughout the process.

It should also be noted that replacement of the No. 3 Road Pump Station, which is located just west of the No. 3 Road Bark Park, is planned to begin within the next five years. This major infrastructure replacement project will include raising the adjacent dike trail, which may impact the west entrance to the No. 3 Road Bark Park. Staff will aim to minimize impacts to the No. 3 Road Bark Park when this project takes place, and regularly communicate with key site user groups throughout the process.

Financial Impact

The total estimated capital cost for the implementation of the enhancements is \$207,000, which can be funded by a previously Council approved project, 2024 Parks General Development.

Conclusion

The No. 3 Road Bark Park was originally developed in 2001 as an informal dogs off-leash area that blended multiple uses without fixed delineation or separation. Since it was created, it has been highly valued by the people who use it as a unique dogs off-leash area in Richmond, regional and recreational cycling connection, and area to walk, run and/or roll near the riverfront.

User groups recently raised safety concerns for dogs, pedestrians, rollers and cyclists who frequent the site. In response to feedback received during the No. 3 Road Bark Park Safety Enhancements public consultation process, background studies and site constraints, the enhancements (as described in this report and illustrated on Attachment 4 – No. 3 Road Bark Park Proposed Enhancements), were developed to guide near-future safety improvement measures.

Should Council approve the proposed enhancements, they can be funded from a previously Council approved project, 2024 Parks General Development, and construction is expected to take place in summer/fall 2024.



Miriam Plishka, BCSLA, CSLA
Park Planner
(604-204-8917)

- Att. 1: No. 3 Road Bark Park Public Engagement Information Boards
- 2: Comparative Analysis of No. 3 Road Bark Park Options
- 3: No. 3 Road Bark Park Safety Enhancements Public Engagement Results
- 4: No. 3 Road Bark Park Proposed Enhancements

No. 3 Road Bark Park Public Engagement Information Boards

1 Welcome!

We are here to receive input on potential safety enhancement options aimed at reducing conflicts between cyclists, dogs off-leash and pedestrians in and around the No. 3 Road Bark Park and adjacent South Dike Trail.

Please review the information boards before answering the survey questions. Feedback received will inform development of a No. 3 Road Bark Park Safety Enhancement Plan, which will be presented to council for consideration.

Please provide your feedback by taking a 10-minute survey by 11:59 pm on Sunday, January 7, 2024.

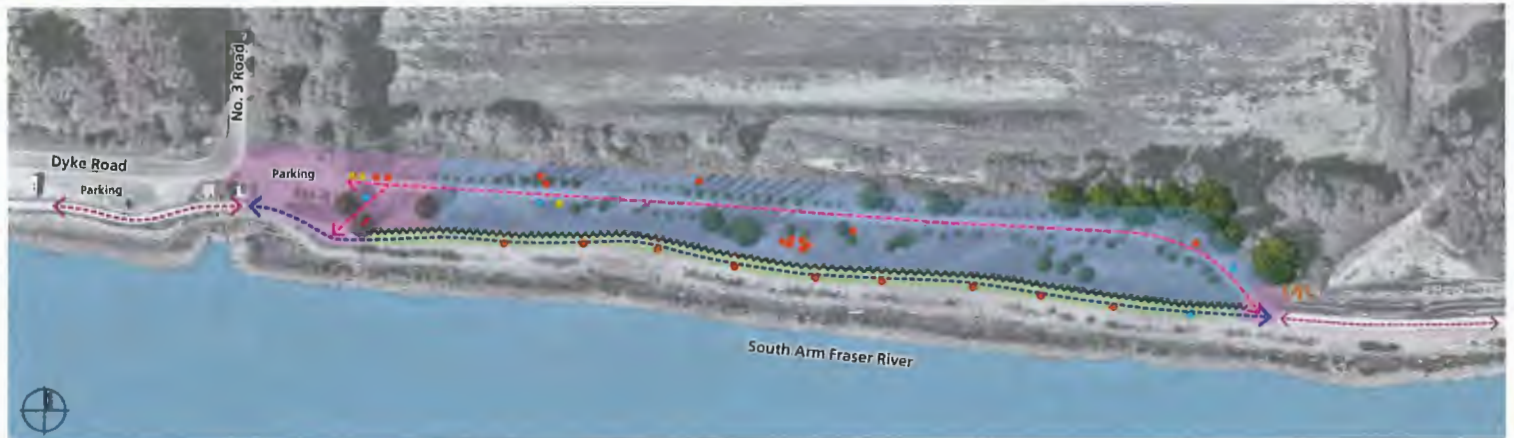
Where We Are In The Process



No. 3 Road Bark Park: Safety Enhancements
Public Consultation November 2023 – January 2024



2 Existing Site Zones and Inventory



- LEGEND**
- Existing Multi-Use Path
Dogs Off-Leash, Pedestrians + Cyclists
 - Primary Trail (4-5 meters wide)
Currently Dogs Off-Leash + Pedestrians
(Cyclists not permitted)
 - Secondary Trail (4 meters wide)
Currently Multi-Use (Dogs Off-Leash,
Pedestrians + Cyclists)
 - Site Entry Area
 - Open Landscape Area
 - Raised Dike and Trail
 - Slope
 - Seating (Picnic Tables and Benches)
 - Waste Receptacles
 - Drinking Fountain with Dog Bowl
 - Bike Racks
 - Site Signage + Kiosk + Bulletin Board



Park entrance, east of parking lot



Seating area in dog off-leash zone, mid-park



Waterfront trail - dog off-leash, cyclists and pedestrians



Secondary trail - dog off-leash, cyclists and pedestrians

No. 3 Road Bark Park: Safety Enhancements
Public Consultation November 2023 - January 2024



enlarged Legend:

- LEGEND**
- Existing Multi-Use Path
Dogs On-Leash, Pedestrians + Cyclists
 - Primary Trail (4-5 meters wide)
Currently Dogs Off-Leash + Pedestrians
(Cyclists not permitted)
 - Secondary Trail (4 meters wide)
Currently Multi-Use (Dogs Off-Leash,
Pedestrians + Cyclists)
 - Site Entry Area
 - Open Landscape Area
 - Raised Dike and Trail
 - Slope
 - Seating (Picnic Tables and Benches)
 - Waste Receptacles
 - Drinking Fountain with Dog Bowl
 - Bike Racks
 - Site Signage + Kiosk + Bulletin Board

3 Areas of Conflict



LEGEND
 Areas of Conflict (between Cyclists and Dogs Off-Leash Users)
 Open Landscape Area



Entrance to dog off-leash area and waterfront trail



East entrance to dog off-leash area and trail



SHARE YOUR THOUGHTS!



Place sticker dots where you think the high conflict spots are.

No. 3 Road Bark Park: Safety Enhancements
 Public Consultation November 2023 - January 2024



enlarged Legend:

LEGEND
 Areas of Conflict (between Cyclists and Dogs Off-Leash Users)
 Open Landscape Area

4 Potential Safety Enhancements: Option A



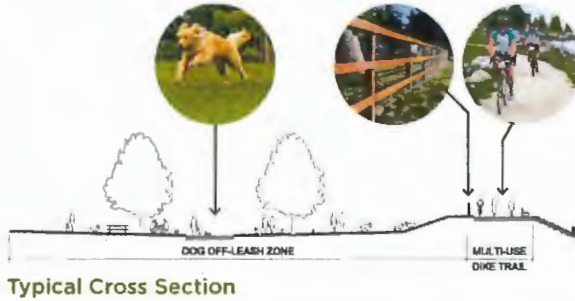
- LEGEND**
- Multi-use Trail (Pedestrians, Cyclists @ 15km max. and Dogs On-Leash)
 - Bollards
 - Enhanced/New Signage
 - Dogs Off-Leash Zone (No Cyclists)
 - Fencing

Did you know?

The dike trail in this area is 4 to 5 meters wide. The Railway Greenway, which is a city-wide multi-use path for cyclists, pedestrians, dogs on-leash and e-scooters is 4 meters wide.

Key considerations

- offers the largest dogs off-leash zone
- includes safety enhancements to direct cyclists
- excludes the dike trail from the dogs off-leash zone
- the dike trail would be multi-use (pedestrians, cyclists and e-scooters at 15km max., and dogs on-leash)



Share your thoughts!
Place a sticky note with comments on this option here

enlarged Legend:

- LEGEND**
- Multi-use Trail (Pedestrians, Cyclists @ 15km max. and Dogs On-Leash)
 - Bollards
 - Enhanced/New Signage
 - Dogs Off-Leash Zone (No Cyclists)
 - Fencing

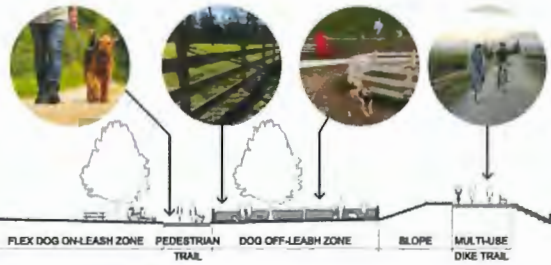
5 Potential Safety Enhancements: Option B



- LEGEND**
- Multi-use Trail (Pedestrians, Cyclists @15km max. and Dogs On-Leash)
 - Pedestrian + Dogs On-Leash Trail (No Cyclists)
 - Dogs Off-Leash Zone (No Cyclists)
 - Flex Zone (Dogs On-Leash)
 - Fencing
 - Bollards
 - Enhanced/New Signage

Did you know?

There are several fully fenced dog off-leash parks in Richmond and it is the current standard practice for new dog off-leash parks. The dog off-leash park in Steveston Community Park has separated zones for small and big dogs.



Typical Cross Section

Share your thoughts!

Place a sticky note with comments on this option here



Key considerations

- provides the highest degree of separation and security for dogs off-leash
- includes separated dogs off-leash zones for small and big dogs
- requires reconfiguration of some furnishings along the north, pedestrian only trail
- excludes the dike trail, including slopes, from the dogs off-leash zones
- follows best management practices for dog off-leash parks

No. 3 Road Bark Park: Safety Enhancements
Public Consultation November 2023 - January 2024



enlarged Legend:

- LEGEND**
- Multi-use Trail (Pedestrians, Cyclists @15km max. and Dogs On-Leash)
 - Pedestrian + Dogs On-Leash Trail (No Cyclists)
 - Dogs Off-Leash Zone (No Cyclists)
 - Flex Zone (Dogs On-Leash)
 - Fencing
 - Bollards
 - Enhanced/New Signage

6 Potential Safety Enhancements: Option C



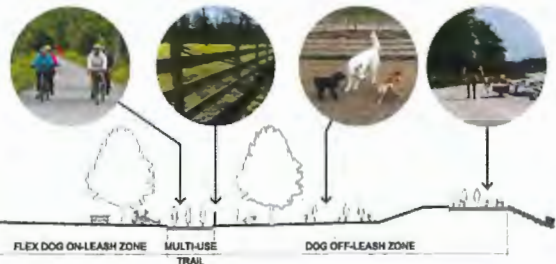
LEGEND

- Multi-use Trail (Pedestrians, Cyclists @15km max. and Dogs On-Leash)
- Dogs Off-Leash Zone (No Cyclists)
- Flex Zone (Dogs On-Leash)
- Fencing
- Bollards
- Enhanced/New Signage

Why is an additional, third separated bike path, along the north side of the site, as suggested in the "Safety Improvements to Bark Park" petition, not included in the represented options?
 Adding another trail along the north side of the site would require tree removals, site regrading and drainage, significant additional costs, and bring cyclists further into the site and further away from the multi-use portions of the dike trail, potentially causing greater confusion.

Key considerations

- most closely matches the current site program
- provides a large, separated area for dogs off-leash
- includes safety enhancements to direct cyclists
- excludes the open green space to the north from the dogs off-leash area
- would require reconfiguration of site furnishings along the multi-use path (e.g. drinking fountain and some benches)
- the slope up to the dike trail is included in the dog off-leash area



Typical Cross Section

Share your thoughts!
 Place a sticky note with comments on this option here

enlarged Legend:

LEGEND

- Multi-use Trail (Pedestrians, Cyclists @15km max. and Dogs On-Leash)
- Dogs Off-Leash Zone (No Cyclists)
- Flex Zone (Dogs On-Leash)
- Fencing
- Bollards
- Enhanced/New Signage

Comparative Analysis of No. 3 Road Bark Park Options

No. 3 Road Bark Park Public Engagement Safety Enhancement Options			
Option	Relative Site Impacts	Relative Cost	Key considerations
Option A	**	\$\$	<ul style="list-style-type: none"> • Provides separation of cyclists, pedestrians and rollers from dogs off-leash. • Results in a continuation of the multi-use dike trails to the east and west of the No. 3 Road Bark Park. • Removes the capacity of people to walk with their dogs off-leash along the dike trail and on a looped trail. • Retains a large open area for dogs off-leash.
Option B	***	\$\$\$	<ul style="list-style-type: none"> • Provides separation of cyclists, pedestrians and rollers from dogs off-leash. • Results in a continuation of the multi-use dike trails to the east and west of the No. 3 Road Bark Park. • Most closely follows best practices for dogs off-leash areas. • Requires extensive fencing. • Greatly reduces the size of the dogs off-leash area and breaks it up into smaller zones. • Requires relocation/reorientation of the furnishings along the existing multi-use trail. • Removes the capacity of people to walk with their dogs off-leash along the dike trail and on a looped trail. • Results in a separated trail for pedestrians, rollers and dogs on-leash only (no cyclists).
Option C	**	\$\$	<ul style="list-style-type: none"> • Provides separation of cyclists, pedestrians and rollers from dogs off-leash. • Results in minimal change to the existing uses on the site. • Reduces the size of the dogs off-leash area by excluding the area to the north of the existing multi-use trail. • Retains the capacity for people to walk along the dike trail with their dogs off-leash. • Removes the capacity for people to walk with their dogs off-leash along a looped trail. • Requires relocation/reorientation of the furnishings along the existing multi-use trail.
Additional No. 3 Road Bark Park Options Raised via the Public Engagement Process for Further Consideration and Analysis by Staff			
Additional Option 1	No impact	No cost	<ul style="list-style-type: none"> • Does not provide separation of cyclists, pedestrians and rollers from dogs off-leash. • Does not follow best practices for dogs off-leash areas. • Results in no changes to the current site uses.

Additional Option 2	*	\$	<ul style="list-style-type: none"> • Does not provide separation of cyclists, pedestrians and rollers from dogs off-leash. • Does not follow best practices for dogs off-leash areas. • Results in minimal change to the existing uses on the site. • Includes minimal safety enhancement measures.
Additional Option 3	*	\$	<ul style="list-style-type: none"> • Does not provide separation of cyclists, pedestrians and rollers from dogs off-leash. • Does not follow best practices for dogs off-leash areas. • Results in minimal change to the existing uses on the site. • Results in barriers for cyclists as well as rollers (wheelchairs and strollers).
Additional Option 4	**	\$\$	<ul style="list-style-type: none"> • Provides separation of cyclists, pedestrians and rollers from dogs off-leash. • Results in minimal change to the existing uses on the site. • Retains the capacity for people to walk along the dike trail with their dogs off-leash and on a looped trail. • Reduces the size of the dogs off-leash area by excluding the area to the north of the existing multi-use trail. • Results in a sub-standard, two-metre wide multi-use trail due to existing trees and associated limitations to expand the width of the existing trail.
Additional Option 5	***	\$\$\$	<ul style="list-style-type: none"> • Provides separation of cyclists, pedestrians and rollers from dogs off-leash. • Results in encroachment of the new trail into a Riparian Management Area. • Results in significant site regrading and impacts to existing trees. • Retains the capacity for people to walk along the dike trail with their dogs off-leash and on a looped trail. • Reduces the size of the dogs off-leash area by excluding the new multi-use trail. • Requires cyclists to connect to the new multi-use trail through the site parking lot due to limited available space on the north side of the parking lot.
Additional Option 6	*	\$ Note: should separated bike lanes along the roadways be pursued, the cost and roadway modifications would be significant	<ul style="list-style-type: none"> • Provides the greatest degree of separation of cyclists from dogs off-leash. • Does not provide separation of pedestrians and rollers from dogs off-leash. • Results in minimal site impacts. • Retains the capacity for people to walk along the dike trail with their dogs off-leash and on a looped trail. • Results in great change to the existing site uses by removing cycling altogether. • Results in cyclists sharing lanes with vehicles due to limitations to widen the roadways and add bike lanes.

		and may not be feasible.	<ul style="list-style-type: none"> • Does not align with Metro Vancouver's Transport 2050: Regional Cycling Network plan which identifies a cycling connection through/along the No. 3 Road Bark Park as part of the regional greenways network. • Requires approximately one kilometre of additional travel for cyclists.
Legend:			
*	= low impacts	\$	= low cost
**	= medium impacts	\$\$	= medium cost
***	= high impacts	\$\$\$	= high cost

No. 3 Road Bark Park Safety Enhancement Survey

SURVEY RESPONSE REPORT

28 November 2023 - 08 January 2024

PROJECT NAME:

No. 3 Road Bark Park Safety Enhancements

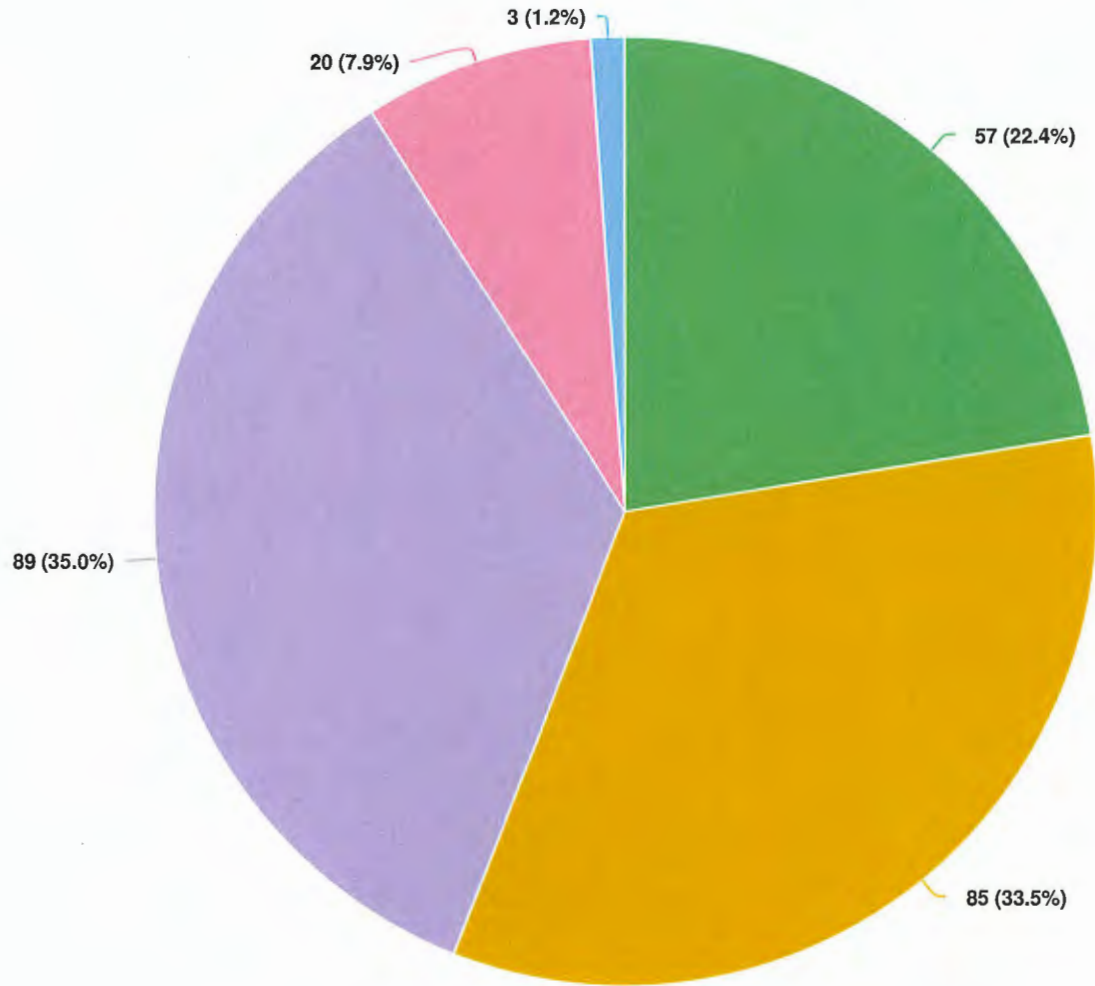


PRCS - 104



SURVEY QUESTIONS

Q1 I visit the No. 3 Road Bark Park and/or adjacent dike trail:

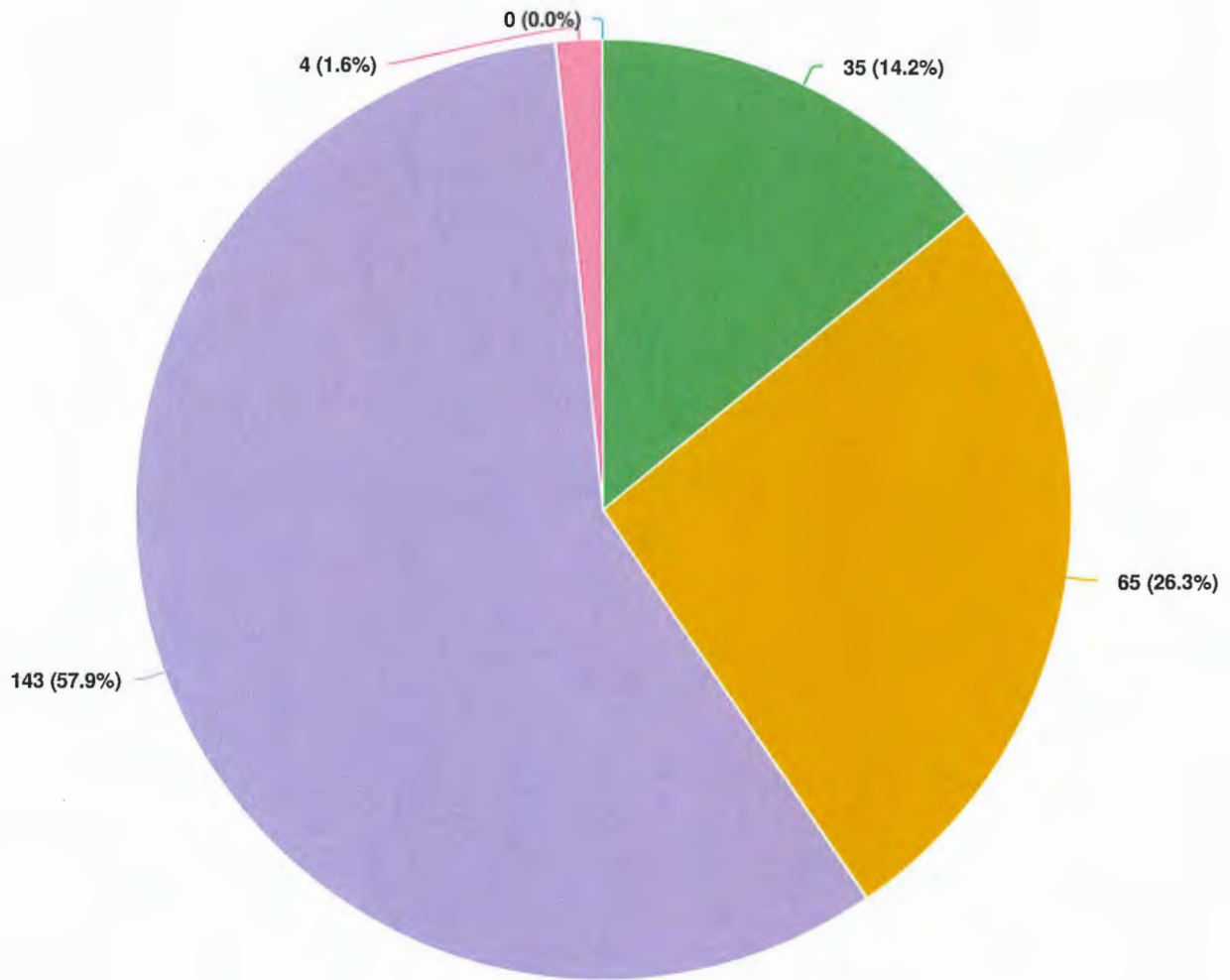


Question options

- Daily
- Once a week on average
- Once a month on average
- I have only visited once
- I have not visited

Optional question (254 response(s), 2 skipped)
Question type: Dropdown Question

Q2 I typically travel to the No. 3 Road Bark Park and/or adjacent dike trail by:



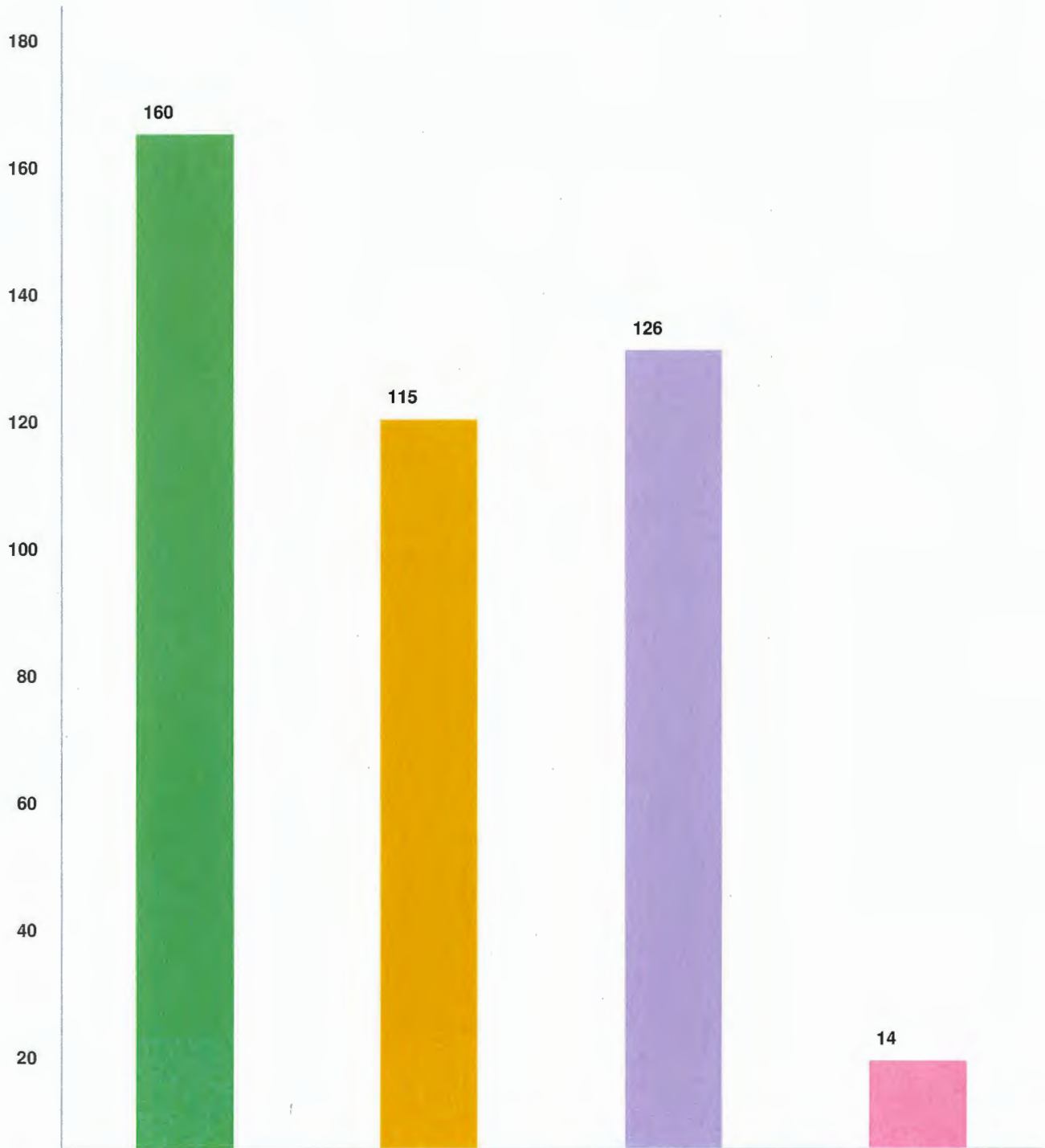
Question options

- Walking
- Cycling
- Driving
- Other (please specify)
- Rolling (e.g., by scooter or assistive mobility device)

Optional question (247 response(s), 9 skipped)

Question type: Dropdown Question

Q3 The following statement(s) best describes me (check all that apply):



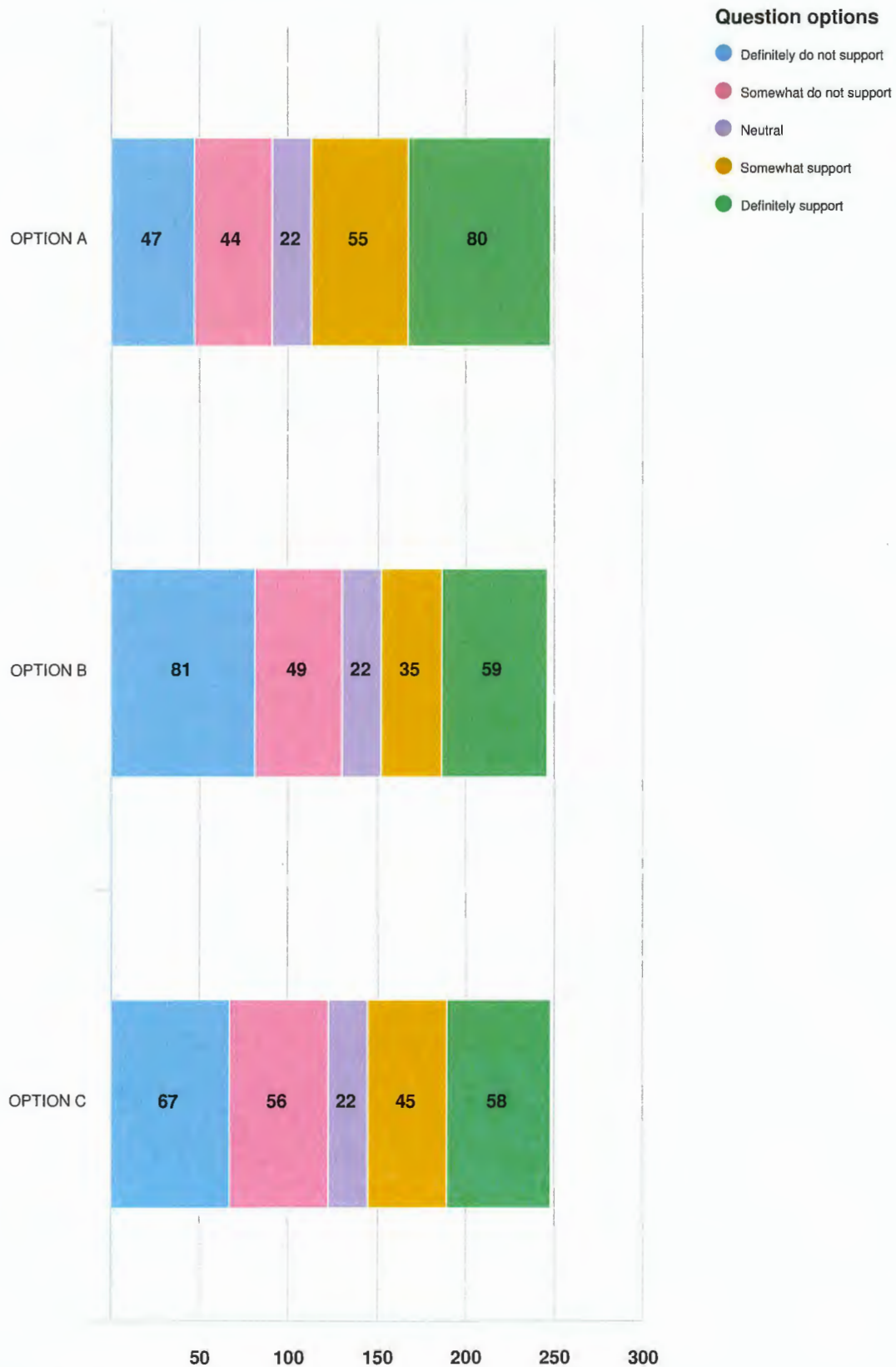
Question options

- I am a dog owner
- I am a cyclist
- I am a pedestrian (walker / jogger / runner / roller)
- I am currently not a dog owner, but plan to be one in the future

Optional question (254 response(s), 2 skipped)

Question type: Checkbox Question

Q4 I have reviewed the 3 safety options and rate my support for them as follows. (Following this question, please provide details to support your ratings.)



Optional question (251 response(s), 5 skipped)
Question type: Likert Question

Q5 The reason(s) why I rated OPTION A as I did above are:

Screen Name Redacted

11/29/2023 11:06 AM

conflict between cyclists and dogs even if a cycling speed limit

Screen Name Redacted

11/28/2023 10:44 AM

We enjoy walking on the upper dike trail along the water with our dog off leash

Screen Name Redacted

11/28/2023 11:28 AM

The separation between pedestrians & cyclists with dogs off leash are important for multi-use in this area, and I support the proposed blocked off areas & trail here.

Screen Name Redacted

11/28/2023 03:30 PM

It gives the best option for dogs to be unleashed and dogs and owners to be separated from cyclists

Screen Name Redacted

11/28/2023 03:34 PM

There are limited large trail options for dogs in Richmond. Fenced dog parks are not suitable for all dogs and contribute to pathogen outbreaks. This option provides the most space but punishes dog users from accessing the view of the dyke walk as well as dogs from accessing the water on a hot day.

Screen Name Redacted

11/28/2023 05:58 PM

It gives most of the use of the park for off leash dogs. But it only allows for a narrow "multi-use" trail along the South portion of the park by the river. The problem isn't addressing the cyclists who are consistently going too fast and have no concern for walkers or dogs whether on leash or not. These are the problem cyclists to begin with who have created the current problem of not "slowing to walking speed" as the signs say. How will it be policed that they are going to go 15kms through there? They aren't doing it now in the current path? If they continue to go at higher speeds on the designated multi use path as laid out in "Option A" the same problem will occur. It won't be safe for on leash dogs or people walking on that trail. It seems like a lot to give up for the 5-10% of cyclists who won't just slow down to walking speed. Why not just divert those cyclists up No. 3 Rd. and along Finn Rd.? It's such a short couple a hundred yards to the end of the park by Crown Packaging and then narrow trails around the building in order to get to Garden City Rd. where they have to slow to go around corners. There is a straight narrow path along the North side of Crown Packaging that I can only imagine is very unsafe for any dog on or off leash or any people walking... again for the 10% who insist on going fast.

PRCS - 110

Screen Name Redacted

11/28/2023 06:28 PM

Currently I do not like visiting the park with my dog due to the steepness of the rocks leading to the river. My dog has gone down and I have been worried about losing him to the fast river. Having a fence blocking off that steep ridge would be preferable to me.

Screen Name Redacted

11/28/2023 06:37 PM

I'm a disabled person and I have a hard time walking and I use my bicycle to walk my dog. I love this park because this is basically the only place in Richmond where I can have my dog off-leash and ride a bicycle. Option A gives no option of having my dog off-leash while riding a bicycle simultaneously.

Screen Name Redacted

11/28/2023 06:34 PM

Largest off leash area!

Screen Name Redacted

11/28/2023 06:32 PM

Gives the largest area to dogs and a natural continuation of the multi-use path to cyclists (as opposed to detour-like turns)

Screen Name Redacted

11/28/2023 06:34 PM

I feel it gives the dogs the maximum area to play, while allowing cyclist and pedestrians to ride without conflict with dogs off leash on the upper Dyke, which is consistent with their current pathways for pedestrians, and give cyclist a good view of the water and of the surrounding area

Screen Name Redacted

11/28/2023 06:38 PM

Because of the raised dyke dogs and owners will be left with out the view while walking. Dogs and owners are usually in the park for 15 to 60 min while the bikes speed through in 2 min.

Screen Name Redacted

11/28/2023 06:44 PM

Dog walkers not permitted on the dike trail.

Screen Name Redacted

11/28/2023 06:36 PM

The whole point is to be able to walk with my dog - not stand around in some fenced off area

Screen Name Redacted

11/28/2023 06:38 PM

I am against the fencing. it would ruin the area

Screen Name Redacted

11/28/2023 06:38 PM

Better safety for dogs of all sizes Improved safety for cyclist

Screen Name Redacted

11/28/2023 06:54 PM

Dogs are dirty and carry disease. Not to mention there is no legal defence against getting bitten by a dog. There needs to be three conditions. 1- dogs must be insured for liability to use public space. 2- if money is to be spent to build something it should be at the user's expense. If I want to use the boat ramp to go fishing at Iona Beach I need to pay over \$100 a year for the permit to do so. Fair is fair, they need to pay for use of the park as well. 3- It must be clear that if something happens to a person, especially a child that there would be legal ramifications. By that I mean severe penalties. People are too easy-going when it comes to animals. Even after somebody gets hurt. I am this blunt about this because the level of blindness, blissful ignorance and denial from people before, and after an incident is absolutely unacceptable, and it repeats itself all the time. Google kids being mauled by dogs. I believe the figure is 300,000 dog bites a year in Canada alone. And police need to be protected from animal advocates, agencies and groups for doing the right thing. I did not forget the lady who got mauled by her own dog for almost half an hour in an elementary school playground only to have the police shoot in the air to purposely miss the animal because they would be in deep shit if they hurt it. The dog subsequently went to run off in the residential subdivisions. What was done? Nothing. And that an essence is the problem.

Screen Name Redacted

11/28/2023 06:43 PM

Feels as if it is so much different from the current set up where not long ago I was walking with a friend and was jumped by a German Shepherd and honestly terrified.

Screen Name Redacted

11/28/2023 07:01 PM

I like to walk on the upper path by the water. Enjoy taking photos from there.

Screen Name Redacted

11/28/2023 06:58 PM

No to a multi-use pathway. We do not need any electric scooters zooming past on leash dogs and children. We need the dike trail for off-leash walks.

Screen Name Redacted

11/28/2023 07:05 PM

Dogs should never be allowed off-leash on a trail, only within a fenced-in park. Off-leash dogs occasionally attack joggers (or anyone moving quickly). Dogs should only be allowed on paths when leashed so people can consent to being around off-leash dogs by entering the enclosed area where they're permitted.

Screen Name Redacted

11/28/2023 07:11 PM

Bikes not allowed on multipurpose lane

Screen Name Redacted

11/28/2023 07:09 PM

Doesn't include river side path in off leash area

Screen Name Redacted

11/28/2023 07:23 PM

Won't make too much of a difference

Screen Name Redacted

11/28/2023 07:37 PM

I think the bikes should be on the lower path as the bikes come through the parking lot from the road. Want to keep bikes off the path on the west side of the parking lot. Why not just put a fence on the south side of the lower path and leave it like that.

Screen Name Redacted

11/28/2023 07:40 PM

I'm in favour of anything because I don't own a dog and only go for occasional walks. I believe if you fear being attacked by unleashed dogs that you should carry a defensive weapon to protect yourself or persons with you. Unfortunately rules and common sense have not prevented dog attacks in Richmond or elsewhere and you must be prepared to defend yourself and your loved ones whether human or animal. 😊

Screen Name Redacted

11/28/2023 07:43 PM

Retains larger off-leash zone but forces dogs to be on-leash along the dyke.

Screen Name Redacted

11/28/2023 07:45 PM

Division (fence) between the multi use trail and dog park and the park is away from the river. We are not able to use the dog park as our lab runs down into the river all the time. its a huge hazard for us.

Screen Name Redacted

11/28/2023 07:50 PM

It is the simplest option and makes the most sense to me.

Screen Name Redacted

11/28/2023 07:58 PM

As it stands, option A allows dogs to get through the fencing to the ditch behind. Were the fencing to be closed entirely, I would be less opposed to this option.

Screen Name Redacted

11/28/2023 08:12 PM

Please leave the park alone!! It's fine as it is!!

Screen Name Redacted

11/28/2023 08:15 PM

Preserves multiuse of the dyke; gives too much space to dog owners

Screen Name Redacted

11/28/2023 08:18 PM

Give the dogs more room = happier dogs and owners

Screen Name Redacted

11/28/2023 08:19 PM

There already is significant access along the river front so have an area with a bigger area for dogs

Screen Name Redacted

11/28/2023 08:27 PM

No e-scooters should be allowed on any trail. They are dangerous and too fast even at 15kmh. Off leash dogs should have complete access to current park. Cyclists are the problem as they ride too quickly and do not use bells.

Screen Name Redacted

11/28/2023 08:34 PM

Dogs should NOT be off-leashed for everybody safety reason. The dog owners should be liable to oversee their dogs' behavior at all time. The dog owners should not download their responsibility to other park users. They should not override other people's usage of the park.

Screen Name Redacted

11/28/2023 08:51 PM

Good: - dogs have a big area to run around but fenced off so as not to impede pedestrians and cyclists - pedestrians and cyclists can move through the area without having to worry about dogs getting in the way Not so good: - as all pedestrians and cyclists are now sharing the MUP, there may be sections during busy times where it could cause some congestion. While it is slightly wider than existing excellent Railway path there is one main difference: cyclists that are comfortable can take the bike lanes on Railway thereby freeing up some space on the MUP, however on the proposed Option A here there is no other space to use - in addition, as the MUP is elevated, with one side facing the river, if there is congestion some may mentally fear getting too close to the edge, however unlikely they would fall

Screen Name Redacted

11/28/2023 09:55 PM

This is an off-leash dog park; there are no on-leash areas as indicated on the inventory list. Confusing to have incorrect information. Many other municipalities require cyclists to dismount through areas that are designated off-leash for everyone's safety including the dogs. There are not that many off-leash dog parks/trails and this one is popular for dog owners because it is not fenced-in, it's a trail along the waterfront, and it's nice to walk the loop. We usually go up along the water trail to the east side of the park and loop around back down the lower north trail and back to our vehicle. When I cycle through I always worry a dog is going to run in front of me. I cycle in other municipalities as well and this park is the only one I can think of that is an off-leash dog park that allows cyclists. You are not comparing apples with apples when you mention the Railway Greenway; Bark Park is an off-leash dog park, not a pathway along an arterial roadway. It is a park and green space.

Screen Name Redacted

11/28/2023 09:37 PM

Makes the most sense

Screen Name Redacted

11/28/2023 09:55 PM

Some people do not like dogs and avoid the trails where there may be off leash dogs. People tend to take up as much of the path as physically possible making it dangerous when there are a lot of cyclists and pedestrians as many people do not stick to one side of the path.

Screen Name Redacted

11/28/2023 09:56 PM

My dog likes to swim and needs access to the river

Screen Name Redacted

11/28/2023 10:07 PM

Offers the most area for dogs to play.

Screen Name Redacted

11/28/2023 10:48 PM

I don't really like the idea of option A. For cyclists and jogger can enjoy sea view along other part of trails no3 road to Gilbert Rd or further down to west and could easily stop at any point enroute. And dog owners won't have any seaside view freely with their dogs

Screen Name Redacted

11/28/2023 10:48 PM

I would prefer that my dog not have access to the fields as he is tempted by the rabbits

Screen Name Redacted

11/28/2023 11:24 PM

Provides no water access. My dog loves to swim there.

Screen Name Redacted

11/29/2023 02:32 AM

No cycling through at all.

Screen Name Redacted

11/29/2023 05:58 AM

Cyclists on top part of dyke- they are just passing through, don't need the view and road part is safer for passing and no riding up a hill

Screen Name Redacted

11/29/2023 06:43 AM

I oppose excluding the dyke trail to dogs off-leash. So many of the dogs at the park like to climb down the rocks and go for a quick swim.

Screen Name Redacted

11/29/2023 06:45 AM

I have a small dog that has been attacked a number of times by large dogs at Richmond's dog parks. I just want to be able to safely take my dog to the park and play ball with him. The last time I was at this park a pitbull cross attacked him unprovoked and I ended up with

PRCS - 115

having to go to the hospital because the pitbull bit me and I had two puncture wounds. I was on antibiotics for two weeks and the wounds were so deep they took almost two weeks to close. I want somewhere safe to play with the chuck it and ball with my dog. Please ensure the space allows functional play with a chuck it so dogs can run and get exercise.

Screen Name Redacted

11/29/2023 07:22 AM

Liejly to have some conflict between parties.

Screen Name Redacted

11/29/2023 08:15 AM

I think this is the least disruptive option and allows cyclists and other trail users passing through to enjoy the riverside view and access.

Screen Name Redacted

11/29/2023 08:21 AM

Good but it needs a separate area for small dogs.

Screen Name Redacted

11/29/2023 08:34 AM

Not a lot of space for thru-traffic. The trail will be full of pedestrians, and bike won't be able to get by

Screen Name Redacted

11/29/2023 08:43 AM

The lower area where the mixed use trail is located is the only open / clear area for dogs to run. There are far too make trees / obstacles in the lower area making it less desirable for any medium to large dogs to play. Cyclists will not follow any rules / signage so this plan to force them to the upper path is the only one that will work for bike safety.

Screen Name Redacted

11/29/2023 09:15 AM

Most closely follows the original intent of the park as an off-leash area.

Screen Name Redacted

11/29/2023 09:03 AM

Good option but prefer the separated dog areas

Screen Name Redacted

11/29/2023 09:49 AM

The city-wide dyke trail network is multi-use with exception of the section fronting the No. 3 Road Bark Park. I believe this is a root cause of the confusion for cyclists who do not realize that they are supposed to use the north trail within the site and, instead, continue along the dyke trail, creating conflicts. Allowing cyclists to continue along the dyke trail and adding greater separation between dogs off-leash and cyclists would greatly help address safety concerns.

Screen Name Redacted

11/29/2023 10:07 AM

Big dog off leash zone Easier for cyclists and pedestrian

PRCS - 116

Screen Name Redacted

11/29/2023 10:26 AM

Feel safe enough to cycle through

Screen Name Redacted

11/29/2023 11:10 AM

we need a completely separated bike / dog park here. I have been chased and bitten. the poor dog owner was very apologetic, but it wasn't really the dog's fault. the dog saw me, a cyclist and chased me.

Screen Name Redacted

11/29/2023 11:13 AM

Any area with pedestrians or cyclists must be did free or at least have dogs leashed.

Screen Name Redacted

11/29/2023 11:14 AM

it makes sense for cyclists continuing on the dyke to have no conflict (in an ideal case) with off-leash dogs; however, it should be balanced with access to waterfront

Screen Name Redacted

11/29/2023 11:18 AM

I am 80+ and I ride my bike on the trail not the road from near no. 2 road around crown zellerbach(?) I want to be on the trail near the river.

Screen Name Redacted

11/29/2023 11:21 AM

cyclists and peds mixed together

Screen Name Redacted

11/29/2023 11:36 AM

No swimming access for dogs

Screen Name Redacted

11/29/2023 12:17 PM

option b is better

Screen Name Redacted

11/29/2023 12:19 PM

Offers the largest area for dogs to roam around and that's what the dog park is all about. Yet while avoiding conflict with cyclists, this still provides a safe multi use trail with a beautiful view for cyclists and pedestrians

Screen Name Redacted

11/29/2023 03:27 PM

More shade on this option More grassy areas on this option If this option selected I would advise gates rather than bollards dividing the off-leash section from the on-leash section. Dogs can fit between bollards and then escape and chase the bikes!

Screen Name Redacted

11/29/2023 03:43 PM

I think this is the best solution to keep both dogs and bikies safe short of rerouting the bikes completely (which would be my most preferred option). However the ends must be fenced off as my dog will run right through the bollards and therefore not solve any issues at all.

Screen Name Redacted

11/29/2023 04:52 PM

I think it would work

Screen Name Redacted

11/29/2023 05:06 PM

Provides the needed separation from bikes and off leash dogs, while still maintaining the excellent off leash space that exists.

Screen Name Redacted

11/29/2023 05:15 PM

Option A does not allow for less sociable and small dogs to have a separate area

Screen Name Redacted

11/29/2023 05:52 PM

Least obstructive to people trying to get around the area

Screen Name Redacted

11/29/2023 05:36 PM

I like that there is a separation between cyclists and the dogs, for both of their safety.

Screen Name Redacted

11/30/2023 06:47 AM

It is better than current state, but having an off leash area with no separation for small and big dogs is concern for us.

Screen Name Redacted

11/29/2023 10:03 PM

Allows space for walking path and most free area for dogs. The whole reason we go to the bark park is so we can walk and not be fenced in like in option B.

Screen Name Redacted

11/30/2023 12:01 AM

It seems to give dogs the most room and finally allows Cyclist to ride along the river. Saying that, most of the time I use 3-Finn-4 Rd and avoid the dog park. It is a route I use when I am tired.

Screen Name Redacted

11/30/2023 07:18 AM

Walking the dyke off leash is most of the reason I go to this dog park. If that option is removed, I will go elsewhere.

Screen Name Redacted

11/30/2023 10:33 AM

Maximizes space for off-leash dogs, but unable to appreciate view of Fraser river and grass area can be boggy / muddy.

Screen Name Redacted

Looks to be a good option **PROS - 118**

11/30/2023 12:30 PM

Screen Name Redacted

11/30/2023 01:12 PM

The dogs don't need access to the water. Let the cyclists and the pedestrians have the upper area so they can take advantage of the beautiful views. I also like this option as the off leash area is fully fenced which reduces the risks of any dogs getting out and causing issues.

Screen Name Redacted

11/30/2023 01:52 PM

The lower path that is suggested for dogs off leash gets very muddy and the grass makes it hard for dog owners to get in to get their dogs to come back to the path if needed and find their dogs poop to clean up. Dogs sometimes end up trying to chase rabbits etc down there and get messy/endanger the wildlife there. Also the top trail is the only scenic place for people to walk their dogs off leash in the city. I know the cyclists will want this option but they have so many scenic and long straightaway options other than this path.

Screen Name Redacted

11/30/2023 02:03 PM

Lots of off leash space for dogs. Bikers have all of the rest of the dyke system to ride on so do not need to be riding through off-leash areas putting dogs and pedestrians at risk.

Screen Name Redacted

11/30/2023 04:00 PM

Off-leash zone is too big and might get in the way of cyclists if a dog jumps over the fence.

Screen Name Redacted

11/30/2023 07:00 PM

It allows the most off-leash dog space, especially in the grassy areas that cyclists and pedestrians don't use. It allows dog owners to walk on a path with their dogs (which is why I visit bark park) rather than stand in a fenced area like all the other dog parks. This also allows dogs to utilize the North trail which has some shade. This shade is essential to dogs' health and safety in the summer months. There is no shade on the dike trail so it is not suitable as the only off-leash trail at the park. Pedestrians and cyclists will enjoy the water views on the dike trail and the dike trail is plenty wide enough for them to share this space.

Screen Name Redacted

11/30/2023 11:22 PM

There is no way to completely keep the dogs off the dyke path without fencing. Adding fencing completely destroys the only functioning dog park in this area of Richmond.

Screen Name Redacted

12/01/2023 12:46 AM

I don't like fenced in areas, that is why we go to bark park.

Screen Name Redacted

12/01/2023 09:46 AM

Does nothing to separate bikes and dogs

Screen Name Redacted

12/01/2023 10:06 AM

It's a simple solution; cyclists get their direct route through the area along the same "alignment" as the section to the west. The dog owners get the entire park/largest area of the three options all to themselves and their dogs. Though they won't like it because they'll say they "lose the view of the river". I see two issues with this option: 1. benches along the river will be potentially impacted by new fence; 2. while you have bollards or a chicane at either end of the two entry points, you will need a third installation at the entrance to the existing MUP at the west end where it spills out to the P-lot. Yes, there's a gate there, but the cyclist will blast through it, no matter how much signage you install; a physical barrier is required which still allows city vehicles access.

Screen Name Redacted

12/01/2023 12:31 PM

Mixing bikes, ebikes, pedestrians, dogs is a bad idea, which the south MUP does. Many dog walkers walk a circular loop around north and south paths which this plan obstructs. Since this option does provide physical segregation via fencing, it is the best alternative of the 3 options provided to improve bike-dog safety. Dogs would lose access to river for swimming.

Screen Name Redacted

12/01/2023 03:14 PM

This park was never for cycling, there I'd signage that notes that. Education for cyclist about going around should be done... not this. IF this has to happen, upper path should be cut in half, so dog walkers can still use... wouldn't actually mind the rocks being fenced off... but still want access to upper path.

Screen Name Redacted

12/01/2023 04:08 PM

I no longer visit the bark park with my dogs as my dogs have almost been hit by bikers several times. The sloped area is not the best for off leash- the dogs and people naturally go down to the lower level. I support this option as the only successful option for an off-leash park.

Screen Name Redacted

12/01/2023 06:42 PM

People have all the rest of the dykes for the typical path with leashed dogs, people and cyclists. This is the ONE place in Richmond where we can walk beside the river and have our dog run. Option A does NOT allow us to walk beside the river with our dog off the leash . . . we don't want to be looking through a fence at the river.

Screen Name Redacted

12/01/2023 07:30 PM

It provides safety for all users while giving the most off-leash space of all proposals.

PRCS - 120

Screen Name Redacted

12/02/2023 11:39 AM

More area for dogs and no crossover and also away from the water which can be accessed by the dog and can pose a safety hazard

Screen Name Redacted

12/02/2023 12:47 PM

The nicest part of the walk with the dog is with the unobstructed view of the river. One of the reasons I travel to this park is so that I can sit on a bench and look at the river while my dog plays. With this option my dog would need to be leashed. The cyclists have a view along the river for the rest of the pathway - let the dog owners have some river views.

Screen Name Redacted

12/02/2023 06:35 PM

Chaos on the dyke trail, even if the dogs are leashed which seems unfair in an off-leash park.

Screen Name Redacted

12/03/2023 07:18 AM

Provides the the largest area for dogs. Is consistent with other areas of the dyke. Low cost solution - best for us who pay tax in Richmond.

Screen Name Redacted

12/03/2023 09:17 AM

I like that there is a route through for pedestrians and cycles that is separate from the off leash dogs. Dogs often chase bikes and go for my ankles

Screen Name Redacted

12/03/2023 12:00 PM

not good value for tax money collected for our community

Screen Name Redacted

12/03/2023 02:32 PM

I think it logically makes the most sense, it is the path of least resistance for pedestrians and cyclist entering from the dyke trail or from the East. It keeps dogs away from the water, which may be an issue for some users, overall probably increases the safety and those owners who want to let their dog play be the water will still probably do that. I think you could still put in a fully fenced area for small dogs within this plan if desired. On signage I would make it clear that leashed dogs ARE okay on the multi-use path though, as many cyclists may feel like they aren't allowed which could cause unnecessary conflict.

Screen Name Redacted

12/03/2023 03:30 PM

Gives the dogs the biggest off leash area while letting runners and cyclists use the upper trail at ease

Screen Name Redacted

12/03/2023 03:41 PM

This option gives the most room to run around and play.

PRCS - 121

Screen Name Redacted

12/03/2023 07:09 PM

Providing the largest off-leash areas to all dogs is not the best management of off-leash park. This does not benefit all dogs. The off-leash area is good to be excluded from the multi-use dyke trail. It will provide clear separation and security to other trail users, walkers, cyclists and runners.

Screen Name Redacted

12/04/2023 11:42 AM

seems lower cost than B

Screen Name Redacted

12/04/2023 02:03 PM

cyclists do not approach the park from the multi use path and typically use the road and through the parking lot with the intention of passing through the park rather than as a destination. Mixing cyclists with pedestrians and people accessing the parking lots is not a safe or practical solution.

Screen Name Redacted

12/04/2023 02:08 PM

Cyclists enter the trail area from the parking lot. The north side parking needs to be removed as it is a hazard with vehicles backing out of their parking spots. With the construction of the area last year, it directed cyclist to a path access (& cars had to park outside of the parking lot zone, it added greatly to the separation needed to distance cyclists from distracted drivers maneuvering the area. The area showed no impact to during the const. when drivers used the River rd parking area that we noticed. There was still lots of room to park.

Screen Name Redacted

12/04/2023 03:20 PM

Although the off leash area is big, the trail is not wide enough. Dogs can get into conflicts in a narrow path.

Screen Name Redacted

12/05/2023 10:44 AM

Option C is the closest to how things are now and have been for years. I do not understand why this is an issue now. We have lived in Richmond for over 40 years and have always had dogs and to have this area to exercise them has been very appreciated. Why can't people get along and share what is available to them.? We are only speaking about approximately 500 metres of dyke.

Screen Name Redacted

12/05/2023 10:52 AM

I don't believe any changes are necessary, however if alterations were made to the space the only realistic option is to create an area where dogs are allowed off leash, and an area where dogs are not allowed.

Screen Name Redacted

Do not like PRCS as referenced

12/05/2023 03:09 PM

Screen Name Redacted

12/06/2023 09:38 AM

Biggest area for dogs and cyclists/walkers/runners can continue straight without diversion.

Screen Name Redacted

12/07/2023 12:08 AM

Maintains closest access and views of river for people walking, rolling, and cycling, while also providing the largest space for off-leash dogs out of the three options.

Screen Name Redacted

12/07/2023 05:45 PM

I'm a dog walker and enjoy the river view while walking my dog off leach

Screen Name Redacted

12/07/2023 10:23 PM

There are so few places for well mannered dogs to run, walk and play safely away from zooming bikes and other wheeled devices it would be best to separate the bike path from the dogs and walking people.

Screen Name Redacted

12/08/2023 03:58 PM

separates dogs from cycles, allows access to waterfront for all

Screen Name Redacted

12/08/2023 05:47 PM

Nice plan but too much off lease maybe

Screen Name Redacted

12/08/2023 06:48 PM

It offers a larger off leash area, which is much needed in Richmond.

Screen Name Redacted

12/08/2023 08:31 PM

Prioritize dog off leash area while still allowing for existing multi use trail as is. Defers all cyclists to the public road infrastructure that already exists.

Screen Name Redacted

12/08/2023 08:54 PM

I like walking along the water and enjoy the scenery that's why I go there with my dog almost twice a day (before I had an altercation with a cyclist. We no longer go)

Screen Name Redacted

12/11/2023 11:59 AM

Most room for dogs to run around while keeping both groups of users separate. Keeps cyclists/joggers/walkers on a straight line.

Screen Name Redacted

12/13/2023 02:01 PM

This would allow to many conflicts between small and large dog owners

PRCS - 123

Screen Name Redacted 12/13/2023 02:55 PM	the view is taken away from pedestrians. I come here for the serenity of the water.
Screen Name Redacted 12/13/2023 03:00 PM	not a good idea
Screen Name Redacted 12/13/2023 03:02 PM	not good
Screen Name Redacted 12/13/2023 03:05 PM	not fixing issue of bike on top trail
Screen Name Redacted 12/14/2023 12:07 PM	if it could be made wider for bike/walk on the other side of the fence. and dogs + people can walk on the dog side and still be able to see the view
Screen Name Redacted 12/14/2023 12:11 PM	dogs should not be restricted and allowed to access the water
Screen Name Redacted 12/14/2023 12:14 PM	allows access to whole grassy area
Screen Name Redacted 12/14/2023 12:20 PM	cyclists using the top segment only enjoy the view for a few minutes. absolute waste of a great view. also it makes smaller an already small area.
Screen Name Redacted 12/14/2023 12:22 PM	space for off-leash too small. cannot connect with river
Screen Name Redacted 12/14/2023 12:29 PM	losing the waterfront
Screen Name Redacted 12/14/2023 12:35 PM	offers largest dogs off-leash area, includes enhancements to direct cyclists, excludes the dike trail from the dogs off-leash zone.
Screen Name Redacted 12/14/2023 12:40 PM	short of rerouting the bikes to Finn, this is the safest solution as long as the ends are gated so that dogs can't chase bikes to 3 Rd.
Screen Name Redacted 12/14/2023 12:46 PM	favours bikes, terrible for walking

Screen Name Redacted 12/14/2023 12:48 PM	favours bikes. terrible for dog walks
Screen Name Redacted 12/14/2023 12:54 PM	no totally separated paths for bikes
Screen Name Redacted 12/14/2023 12:55 PM	leave as is
Screen Name Redacted 12/14/2023 01:33 PM	Having a clear separation from the off leash dogs and other users is a great idea (since unfortunately there are a few irresponsible off-leash dog owners who do not have control over their dogs).
Screen Name Redacted 12/14/2023 04:55 PM	makes the most sense to fence in dog area
Screen Name Redacted 12/14/2023 06:10 PM	The PDF is not accessible to people with screen readers, but I do like the off leash areas. However, the share pathway with E-scooter/cyclist going up to 15kn/hour could be dangerous for people living with sight loss and other mobility issues.
Screen Name Redacted 12/15/2023 09:26 AM	Would likely create conflict between the different demographics. Loss of space.
Screen Name Redacted 12/15/2023 09:40 AM	Cyclists are there for the least amount of time. Walkers should get the nicer view of the river.
Screen Name Redacted 12/15/2023 04:19 PM	Keep trees Safe cycling Dogs off leash area separate
Screen Name Redacted 12/16/2023 06:52 PM	separation and accessibility - seems to maximise opportunity for dog off leash areas and avoid visual impacts
Screen Name Redacted 12/17/2023 04:28 PM	This is giving the dogs and their owners the ugly area. Cyclists aren't there to enjoy the walk or the view. They just drive by.
Screen Name Redacted 12/17/2023 10:50 PM	- Direct route for people walking/cycling along dyke trail - Leaves the most amount of space for people with dogs

Screen Name Redacted

12/22/2023 04:43 PM

It's not my favourite plan

Screen Name Redacted

12/25/2023 04:00 PM

As close to our park originally

Screen Name Redacted

12/26/2023 12:07 PM

We do not have many large open off-leash areas in Richmond - especially compared to the kilometers of dyke trail available to cyclists and walkers. Why are we taking away a well used facility that has been in place for many years and was created as an off leash area to accomodate a segment of park user who has access to many kilometers of alternate routes? I know we do not pay a lot for our dog licences - but we do pay. Whereas neither cyclists or pedestrians are asked to buy extra licences to use park facilities. I do believe that the parks are for all of us in Richmond - but that does mean some parks will be more suited for some activities. There should be parks available for all activities. But it doesn't work to try and make all parks work for all activities.

Screen Name Redacted

12/28/2023 12:25 PM

Of all the Dyke trails, bike lanes, and walking paths, dog owners are asking to preserve roughly 400 meters to provide us with a place that is peaceful and safe. All I see in all of these options is blind deference towards bikes, and little to no analytical data to allow true decisions to be made based on actual usage of these trails. Bikes can ride on any road, or path anywhere else in Richmond. Why is the city insisting on changing one magical space for dog owners in deference to cyclists?

Screen Name Redacted

12/31/2023 10:07 AM

This maximizes the area for dogs to run, while owners walk with them.

Screen Name Redacted

1/01/2024 09:32 AM

In all my years using the dog park I have never seen a cyclist use the path closest to the water. Everyone knows it's a dog park and the issues are more to do with cyclists travelling too fast in the lower portion and no clear signs that it's a dog park. Cyclists have many options in Richmond versus dog owners. The priority for that space should be dog owners and cyclists are just passing through. All they need to do is slow down a bit. Also dogs love water so they tend to gravitate to the upper path next to the water. A big flaw with raised dyke is it removed options for dogs to access water. Many dogs are constantly trying to navigate the rocks to reach the water. It would be nice if there was a ramp or some way to access water.

Screen Name Redacted 1/02/2024 10:25 AM	Seems like a lot of dog area and not enough area for people who just want to walk. The pedestrian trail should be switched with the multi use trail so the pedestrians get a better view of the water.
Screen Name Redacted 1/04/2024 05:48 PM	It eliminates the riverside trail and slope from the off-leash area, which is an essential part of the dog part experience.
Screen Name Redacted 1/04/2024 05:54 PM	I like that the area includes the northern grass area butting the farmers ditch and field
Screen Name Redacted 1/04/2024 06:03 PM	Not sure that it would be safe to mix cyclists and pedestrians in such a limited space
Screen Name Redacted 1/04/2024 06:05 PM	I don't think there's anything wrong with the park the way it is. Cyclists need to be aware of their surroundings. Simple as that. This option seems the least invasive to the park and will have the smallest change to the dog park which truly is the main attraction/destination. There are countless places to bike in Richmond, not so much for dogs to play in an off leash park! I think minimal change is best
Screen Name Redacted 1/04/2024 06:11 PM	It allows use of the green space for off leash dogs while giving shared use priority to the waterfront pathway- the most diverse use is along the waterfront. I would be fine with leashing my dog for this portion of the trail and also using the off leash area.
Screen Name Redacted 1/04/2024 06:11 PM	Ok idea. B is the Best by far.
Screen Name Redacted 1/04/2024 06:11 PM	Does not meet my expectations of a off leash dog park I walk my friends dog and find cyclists are too aggressive and not mindful
Screen Name Redacted 1/04/2024 06:16 PM	Too few off leash options and spaces. Dogs will be confined to too limited an area. But still better than B
Screen Name Redacted 1/04/2024 06:16 PM	This option appears to remove the cyclists from the dog off leash area in a fairly simple manner. Provides maximal space for dogs to roam without bothering cyclists or walker/joggers. And visa versa for non dog owners.

Screen Name Redacted

1/04/2024 06:21 PM

I think the current trail use is the best design and the addition of the fence will help.

Screen Name Redacted

1/04/2024 06:28 PM

Dogs everywhere, little space for pedestrians and cyclists.

Screen Name Redacted

1/04/2024 06:29 PM

Simplest solution as long as gating ensures that cyclists do not use the North trail and fencing is secure enough that no one is tempted to cross it into the dog area from the multi use trail or back.

Screen Name Redacted

1/04/2024 06:41 PM

I feel that dog walkers should be able to enjoy the scenery of the river. Also I used to take my dog here regularly and he loves the water - he liked to go down the rocks to the river. He was a retriever and it's a challenge to not let them go in the water if it's right there!

Screen Name Redacted

1/04/2024 06:42 PM

I do not regularly use the dog park now but I used to cycle through it a few years back on my way to and from work. Back then it was always a challenge, as a cyclist, to avoid over-exhuberant dogs who just want to play and/or greet a cyclist. This can be very dangerous for the cyclist and also the dog. I do not blame the dogs, but the owners, for a lack of training. Dogs should be kept completely separated from cyclists, in particular, and also from walkers. This option keeps a very large area for dogs and also a perfect path for both cyclists and walkers, a direct continuation of the dyke path. As a recent visitor to this dog park (with my daughter's dog) and other dog parks I can see the advantage of separate areas for different size dogs. It is good training for dogs to mix with other dogs and generally the size does not matter. But very small dogs are quite intimidated by large dogs, and their owners are probably cautious about bringing their dogs to the park at all if they are going to bowled over by a larger dog. Therefore I would suggest adding an area for small dogs to this option - my observations at the parks is that medium and larger dogs mix and play very well. This also looks to be the least amount of work.

Screen Name Redacted

1/04/2024 06:56 PM

More space for the dogs

Screen Name Redacted

1/04/2024 06:59 PM

I don't want cyclists and dogs to mix, nor do I want that area fenced

Screen Name Redacted

1/04/2024 07:05 PM

Cyclists and walking pedestrians can continue with a scenic view and dogs can be kept out of the water. I prefer that my dog does not access the water, as the blackberry bushes on the rocks (near the

PRCS - 128

water) are thorny, I worry about my dog breaking an ankle by slipping on the rocks, and I don't want my dog swimming in the fast water.

Screen Name Redacted

No access off leash on the dyke side

1/04/2024 07:14 PM

Screen Name Redacted

I agree fencing the large green space would make it safer for dogs and cyclist/pedestrians. People can still walk the dyke with dodging running dogs. A fenced area will alleviate the fear of dogs running past the dyke towards the water. Knowing how many dogs can be present at any given time of day, this area of the dyke would only be welcoming to those who have or like dogs. By fencing, it makes the park inclusive to all park users.

1/04/2024 07:35 PM

Screen Name Redacted

I think the multiuse should be near the water so everyone can enjoy the area by the water.

1/04/2024 07:39 PM

Screen Name Redacted

Not enough off- leash excluded area away from bikes

1/04/2024 07:44 PM

Screen Name Redacted

still close to the water

1/04/2024 07:43 PM

Screen Name Redacted

Gives the largest off leash area for dogs but takes away the ability to for some dogs to get into the water.

1/04/2024 07:56 PM

Screen Name Redacted

I prefer cyclists to be separated from pedestrians as many cyclists do not adhere to the speed limit. With the fence on one side and the riverbank on the other side, there is a higher risk of collisions and people and animals getting hurt.

1/04/2024 08:10 PM

Screen Name Redacted

Largest available space for dogs.

1/04/2024 08:21 PM

Screen Name Redacted

Would rather use the water side as a walking path with my dog

1/04/2024 08:47 PM

Screen Name Redacted

it is the largest dog off-leash park in Richmond and very natural - meaning not too many man made divisions. if dog owners prefer fenced dog-off leash park there are plenty of them around. please keep it the way it is as it's the only one there is!

1/04/2024 08:49 PM

PRCS - 129

Screen Name Redacted 1/04/2024 08:54 PM	Most reasonable to have dyke path continuous from before dog park for pedestrians and bikes. Also allows a bit more room on north side of path
Screen Name Redacted 1/04/2024 09:06 PM	When I make my way to the 3Rd Bark Park, it is when i have time and desire for a leisurely stroll. It is usually a nice day out. Having me unable to have my dog off-leash on the water side of the park would make me not want to go there and just go to another off-leash dog park.
Screen Name Redacted 1/04/2024 09:26 PM	Bigger off leash area. More general public use of dike area (bikers, walkers, etc.)
Screen Name Redacted 1/04/2024 09:29 PM	It is a better layout than what is currently there.
Screen Name Redacted 1/04/2024 10:17 PM	Area north of the path near the agricultural land is dangerous to animals/pets. Northern half of the park doesn't get used as much as an off leash area.
Screen Name Redacted 1/04/2024 10:20 PM	Too big an area for dogs, too small an area for people.
Screen Name Redacted 1/04/2024 11:59 PM	Dogs will run around the bollards.
Screen Name Redacted 1/05/2024 06:30 AM	Most off leash area for dogs
Screen Name Redacted 1/05/2024 07:47 AM	Multi-use may not be the best option - walking dogs on leash with bikes going gy - but would still work
Screen Name Redacted 1/05/2024 08:14 AM	Largest off leash area while still allowing access to dike trail on leash.
Screen Name Redacted 1/05/2024 08:58 AM	largest surface area. Keeps bikes separate.

Screen Name Redacted

1/05/2024 10:07 AM

Largest area for dogs

Screen Name Redacted

1/05/2024 10:11 AM

Does not separate cyclists and pedestrians.

Screen Name Redacted

1/05/2024 10:45 AM

Provides room for dogs to run around and provides separate path outside of off leash area for safety. Although in my opinion a separate fenced off area is not necessary if there are clear signs alerting cyclists that they are riding through an off leash area. This is really such a small stretch of the entire trail where cyclists need to slow down. However, I do understand that sometimes a running dog can be unpredictable and so a fenced off path may keep everyone safe including the dogs. My preference is to keep the off leash area as large as possible. This is a good space for dog owners to work on the recall command with their dogs. There are so few areas in Richmond where you can work on the recall command. It does not work well in the smaller fenced in dog parks.

Screen Name Redacted

1/05/2024 11:44 AM

The trail next to the water should be designated for all users to enjoy and not specifically to dog-owners, the slight concern I have is control of the dogs as they can get excited and run onto the trails when people might be cycling, jogging, walking by.

Screen Name Redacted

1/05/2024 12:07 PM

The use of the elevated path for multi use, keeps the users a bit separated from the "advances" of dogs

Screen Name Redacted

1/06/2024 04:16 PM

It gives the largest option for my dog to run and play as I walk along the path

Screen Name Redacted

1/05/2024 12:45 PM

This option creates a continuous path along the dyke for pedestrians and cyclists, with a large space for dogs to run around without interfering with cyclists.

Screen Name Redacted

1/05/2024 01:26 PM

It looks like it is the current configuration and although it is not perfect, it gives the most freedom to dogs, pedestrians and cyclists. With some additional signage and occasional monitoring by the city to encourage cyclists to slow to a walk it is workable. If cyclists were educated to slow down and give a warning when approaching behind a pedestrian, and dog walkers were educated to make their dog sit when a cyclist is approaching this is still the best option for both.

PRCS - 131

Screen Name Redacted

1/05/2024 01:50 PM

Loads of area for dogs off leash. Good access to dyke for walkers and cyclists. Fencing will enhance safety.

Screen Name Redacted

1/05/2024 02:29 PM

Large open area, only fenced on one side. Dogs run wild, owners not watching carefully.

Screen Name Redacted

1/05/2024 02:55 PM

Provides preferred access to the group of park users who are in the park for the least amount of time (most cyclists are in the park for less than 5 minutes), are primarily responsible for creating the safety issues, and who do not pay any licensing fees to the city (dogs owners pay an annual licensing fee that is supposed to fund dog parks). Obscures the view of the water for all other park users.

Screen Name Redacted

1/05/2024 03:18 PM

Majority of users are people walking the dyke, so it makes logical sense to have them walk along the dyke. Dog park is mainly for those interested in a park, so they should be fine with the greenspace. I would very much recommend moving the fence-line to the blacktop and avoid any greenery in the dyke walking area, this will help discourage dog walkers from using the dyke. Another reason to discourage dogwalkers from using the dyke portion is due to the dogwalkers who still insist on having their dogs off-leash - so if this portion of the walk is void of greenery, it will help encourage these people to use the dog park instead.

Screen Name Redacted

1/05/2024 08:32 PM

Maintains flow of movement along dike trail the best

Screen Name Redacted

1/05/2024 09:37 PM

Clearer rationale for cyclists to just go straight through from the parking lot

Screen Name Redacted

1/06/2024 11:38 AM

There are still ways at each end, for dogs who are not under control to interfere with pedestrians or cyclists.

Screen Name Redacted

1/06/2024 12:01 PM

There are not many dog parks in Richmond that allow for a lot of sniffing creating more space for the animals is what I am supposed of. Pedestrians and can through on the lower path and if they are fearful of dogs they can do the higher lever dike trail right the bikes

Screen Name Redacted

1/06/2024 12:10 PM

Largest run area for dogs.

PRCS - 132

Screen Name Redacted

1/06/2024 03:08 PM

Bikers should be on bottom path or not allowed in park to begin with

Screen Name Redacted

1/06/2024 07:49 PM

Largest area for dogs. Easiest path for cyclist

Screen Name Redacted

1/06/2024 07:57 PM

Continuity of multi use pathway along the dike trail makes more sense. As a cyclist, the continuous multi use pathway is logical and the fenced in configuration helps so that cyclists aren't having to make erratic evasive manoeuvres. Safer for dogs to avoid the rocks down to the river (currents are much stronger than most people realize) Provides the largest run area, largest unimpeded area (i.e. no zones so similar to current state) for dogs to enjoy. This is one of the primary reasons we come to bark park. Maintains the gravel walking path for owners as well.

Screen Name Redacted

1/06/2024 08:04 PM

Do not support this option for various reasons. The lower path that is suggested for dogs here gets very muddy in the grassy part, especially in the rain, which can also make it challenging for dog owners to retrieve their dogs if needed. Some dogs also try to chase rabbits in that area, not good for wildlife. This lower path actually seems a better option for cyclists, which is how it is currently configured. Many owners already avoid this area, for reasons mentioned, and also prefer to walk on the dyke area along the river, as it is the only area in Richmond where you can walk a dog off leash along the water.

Screen Name Redacted

1/06/2024 09:10 PM

works the best for walkers and cyclists

Screen Name Redacted

1/07/2024 08:01 AM

One of my favourite parts of the park is to walk on that pathway with the water views. This multi-use option only allows cyclists to bike the path and only on-leash dogs.

Screen Name Redacted

1/07/2024 10:50 AM

the most unwasted use of space and makes sense with flow of traffic and dogs. please have great signage and gates ensuring cyclists know where they are going.

Screen Name Redacted

1/07/2024 04:12 PM

Offers the largest off leash dog play area and provides a fenced area from cyclists and pedestrians with dogs on leash.

Screen Name Redacted

1/07/2024 04:14 PM

This is a win win. The dogs have their space and there's ample room for cyclists and walkers.

Screen Name Redacted

1/07/2024 08:21 PM

I guess the lesser of two evils.

Screen Name Redacted

1/07/2024 09:04 PM

Cyclists should be allowed to ride along the river's edge. By moving the off-leash area to the north, dogs still have a large area to roam around. This still gives dog owners the right to be by the water, they just have to have their dogs on a leash.

Screen Name Redacted

1/07/2024 11:49 PM

This is the closest. But it would be best to just move the road/bike path along the fence line by the ditch. The bike riders prefer the lower level anyway. And fence the road/path off so the riders don't have to worry about the dogs in their way through the park. The dog owners don't have to worry about their dogs getting hit. Pedestrians and dogs can walk along the upper level. ditch -----
 ----- (the existing fence)----- < < < road / bike path >
 > > P [----- (add
 fence) -----] B a [] C r [picnic table] k [] P i [safe and fun for all
] a n [] c g [] k for all walking and no worries about bikes on the dike]
 e " " " " " " " " " " " " " "] r water s

Optional question (221 response(s), 35 skipped)

Question type: Essay Question

Q6 The reason(s) why I rated OPTION B as I did above are:

Screen Name Redacted

11/29/2023 11:06 AM

MUP remains in original position. still provides a separated dog area and like the separated small and large dogs

Screen Name Redacted

11/28/2023 10:44 AM

Definitely do NOT support this option whatsoever. Does not allow for a walk on either trail with our dog off leash. Makes it no better than other off leash parks where you are enclosed all around. Doesn't seem fair that you would even consider this at this park.

Screen Name Redacted

11/28/2023 11:28 AM

The separation between pedestrians & cyclists with dogs off leash are important for multi-use in this area, and I support the proposed blocked off areas & trail here.

Screen Name Redacted

11/28/2023 03:30 PM

I don't like th idea of dogs having to be leashed on the lowers trail

Screen Name Redacted

11/28/2023 03:34 PM

Richmond has the fewest dog park options compared Vancouver and surrounding cities. Fenced dog parks are not suitable for all dogs and contribute to pathogen outbreaks. This option punishes dog owners by removing one of only 4 available off-leash trails in Richmond. Cyclists already have unfettered access to the rest of the dyke trail, why can they not dismount or be more cautious in this ONE section of the trail?

Screen Name Redacted

11/28/2023 05:58 PM

It significantly reduces the off leash area which is the very reason I go to it. It leaves a smaller, fenced in area for dogs which limits them from getting the exercise they need. This is part of the reason for preferring the Bark Park over the Steveston dog park, which is nice and I like the upgrading done there, but for a larger dog, they just won't run when they're hemmed in by a smaller fenced area. While the on leash portion is nice, it doesn't allow the dogs to benefit from the full potential of the park for off leash exercise.

Screen Name Redacted

11/28/2023 06:28 PM

The option is good, with nice off leash areas but I makes the park less about walking and more of a standing park.

Screen Name Redacted

11/28/2023 06:37 PM

I'm a disabled person and I have a hard time walking and I use my bicycle to walk my dog. I love this park because this is basically the only place in Richmond where I can have my dog off-leash and ride a bicycle. Option B gives no option of having my dog off-leash while riding a bicycle simultaneously.

Screen Name Redacted

11/28/2023 06:34 PM

Too much fencing, cost!!

Screen Name Redacted

11/28/2023 06:32 PM

Gives a limited area to dogs and forces cyclists off their natural line by introducing unexpected turns

Screen Name Redacted

11/28/2023 06:34 PM

I feel that it gives the greatest separation for pedestrians ,cyclist away from off leash dogs and provides the best view for the majority of riding and walking participants while allowing the dogs, a maximum area to play.

Screen Name Redacted

Dogs in case of PRCS - 135 people choose bark park because it is one

11/28/2023 06:38 PM

of the few places you can walk you dog off leash for a reasonable distance.

Screen Name Redacted

Dog walkers not permitted on either trail.

11/28/2023 06:44 PM

Screen Name Redacted

This puts walkers too far from the water which is the nice view

11/28/2023 06:36 PM

Screen Name Redacted

fence ing

11/28/2023 06:38 PM

Screen Name Redacted

Not as safe but better than what's there now.

11/28/2023 06:38 PM

Screen Name Redacted

Dodd are dirty and carry disease. Not to mention there is no legal defence against getting bitten by a dog. There needs to be three conditions. 1- dogs must be insured for liability to use public space. 2- if money is to be spent to build something it should be At the users expense. If I want to use the boat ramp to go fishing at Iona Beach I need to pay over \$100 a year for the permit to do so. Fair is fair, they need to pay For use of the park as well. 3- It must be clear that if something happens to a person, especially a child that there would be legal ramifications. By that I mean severe penalties. People are too easy-going when it comes to animals. Even after somebody gets hurt. I am this blunt about this because the level of blindness, blissful ignorance and denial from people before, and after an incident is absolutely unacceptable, and it repeats itself all the time. Google kids being mauled by dogs. I believe the figure is 300,000 dog bites a year in Canada alone. And police need to be protected from animal advocates, agencies and groups for doing the right thing. I did not forget the lady who got Mauled by her own dog for almost half an hour in an elementary school playground only to have the police shoot in the air to purposely missed the animal because they would be in deep shit if they hurt it. The dog subsequently went to runoff in the residential sum divisions. What was done? Nothing. And that an essence is the problem.

11/28/2023 06:54 PM

Screen Name Redacted

I like the separation and the fact that users of of path are by the river

11/28/2023 06:43 PM

Screen Name Redacted

Do not like that space, uneven terrain, sloped, frequently flooded areas, not easy to walk on for any one with any mobility concerns.

11/28/2023 07:01 PM

PRCS - 136

Screen Name Redacted Separated big and small dog areas are silly. All dogs should be able to socialize.
11/28/2023 06:58 PM

Screen Name Redacted Bikes can ride the multipurpose path
11/28/2023 07:11 PM

Screen Name Redacted Too restrictive for off leash area
11/28/2023 07:09 PM

Screen Name Redacted Provides a separate area but the area is quite small
11/28/2023 07:23 PM

Screen Name Redacted Best of suboptimal options. I like the bikes on the lower path. Pedestrians on both paths.
11/28/2023 07:37 PM

Screen Name Redacted I'm in favour of status quo or any changes. I appreciate the city trying to create a safe and enjoyable unleashed dog park. I'm not a dog owner and only go for short walks occasionally.
11/28/2023 07:40 PM

Screen Name Redacted Prevents cyclists on north trail but reduces size of off-leash area and forces dogs to be on-leash on the dyke trail.
11/28/2023 07:43 PM

Screen Name Redacted I like the dog area cordon off all together.
11/28/2023 07:45 PM

Screen Name Redacted Complicated and confusing layout
11/28/2023 07:50 PM

Screen Name Redacted Fenced and safe, lots of room to roam but maintains paths surrounding. Would prefer C, but this would be fine.
11/28/2023 07:58 PM

Screen Name Redacted Leave the park alone! My daily walks there have been interrupted for 4 years now!! Leave it alone!
11/28/2023 08:12 PM

Screen Name Redacted Safest for everyone involved, especially dyke users
11/28/2023 08:15 PM

Screen Name Redacted This seems like a good option
PRCS - 137

11/28/2023 08:13 PM

Screen Name Redacted

Separation of size of dogs

11/28/2023 08:19 PM

Screen Name Redacted

The charm of this park is that it is open and large with a variety of topography. Fences will ruin it. Maybe run a fence 4 ft from current fence and inside boundary of park and make it bikes only. They are the problem as they go too fast and don't use bells

11/28/2023 08:27 PM

Screen Name Redacted

Dogs should be confined in a designated area for the safety concerns of general public users.

11/28/2023 08:34 PM

Screen Name Redacted

Each area/zone is clearly defined (off-leash dog area vs MUP vs just pedestrian trail). This also takes into consideration for people who may not be completely comfortable around dogs, to still be able to enjoy the view of the river by walking on the elevated path and/or sit and rest. The dog off-leash zone also mimics that of the others in Richmond in the way it's structured - e.g. Garden City dog park and McCallan Park near Thompson so it would not be confusing for dog owners. This option gives all users their own areas: - pedestrians who are comfortable with dogs can choose either the lower trail or the elevated trail - pedestrians who are not comfortable with dogs can use the elevated trail without having to worry - dog owners have a choice of either the off-leash zone, or the flex off-leash zone - cyclists can use the elevated trail without having to worry about dogs running into their path and possibly injuring themselves and the dogs

11/28/2023 08:51 PM

Screen Name Redacted

This is an off-leash dog park and option B talks about turning sections into leashed areas. The fenced areas do not promote a walking trail for exercise. The Railway Greenway is not the same use as Bark Park and also has its own safety issues with many incidents.

11/28/2023 09:55 PM

Screen Name Redacted

Gives people options to walk and avoid off leash dogs. Since there will be two useable options for pedestrians, the trails may not be as busy making it safer for cyclists and pedestrians.

11/28/2023 09:55 PM

Screen Name Redacted

Same as above

11/28/2023 09:56 PM

Screen Name Redacted

Safest for the dogs as their areas are enclosed.

11/28/2023 10:07 PM

PRCS - 138

Screen Name Redacted

11/28/2023 10:48 PM

I totally disagree with option B, it will just make it like other dogs park. The nice part of no 3 Bark park is that our dogs can freely walk the trail with us, like a friend walking together. It is also a place where I learn how to trust my dog and how the dog can trust us.

Screen Name Redacted

11/28/2023 10:48 PM

This provides the most safety for all members of the public and keeps my dog away from both the fields and the water. I do not think however that the dog area would need to be divided in 3, rather a model that mirrors the Steveston dog park would work better.

Screen Name Redacted

11/28/2023 11:24 PM

Same as Option A. My dog loves to swim plus your reduced cling the size of the play area

Screen Name Redacted

11/29/2023 02:32 AM

Cycling on the waterfront. Maybe can leave for dog owners as it is a dog park.

Screen Name Redacted

11/29/2023 05:58 AM

Don't need to separate dogs - takes up so much of the area for just dogs - dog separation only needed if have badly trained big dogs and they shouldn't be off leas anyway

Screen Name Redacted

11/29/2023 06:43 AM

I oppose excluding the dyke trail to dogs off-leash. So many of the dogs at the park like to climb down the rocks and go for a quick swim. I also oppose fencing the dogs in as this is the one area, in addition to McDonald Beach where they can run around. Delta provides a much larger off-leash area at Delta North 40. Also, I live across from London Park and the off=leash area you have created, but not finished, there is nice enough but the area is too small for dogs and their owners to get the exercise they need.

Screen Name Redacted

11/29/2023 07:22 AM

Increased chance of conflict between pedestrians and dogs off leash

Screen Name Redacted

11/29/2023 08:15 AM

This option is a good alternative if dog owners need the separation and fenced areas. This will require more fencing and disruption to the environment.

Screen Name Redacted

11/29/2023 08:21 AM

It has a separate area for small dogs.

Screen Name Redacted 11/29/2023 08:34 AM	Gives an option for pedestrians to still enjoy the upper area, spreads out traffic
Screen Name Redacted 11/29/2023 08:43 AM	Way to complicated and chopped up. No one will follow these rules in the designated areas. You also have nowhere for a med to large dog to run.
Screen Name Redacted 11/29/2023 09:15 AM	Off-leash area too narrow.
Screen Name Redacted 11/29/2023 09:03 AM	best option with the separated dog areas and non-cycling route
Screen Name Redacted 11/29/2023 09:49 AM	Any safety enhancements would be a benefit.
Screen Name Redacted 11/29/2023 10:07 AM	Tiny dog off leash zone. Let the dogs have a good time.
Screen Name Redacted 11/29/2023 10:26 AM	I like this option best, there's no cyclist in some areas, and good for dogs and pedestrians
Screen Name Redacted 11/29/2023 11:10 AM	this is my second choice. see above. less dangerous
Screen Name Redacted 11/29/2023 11:13 AM	Any area with pedestrians or cyclists must be did free or at least have dogs leashed.
Screen Name Redacted 11/29/2023 11:14 AM	I think it's important to dog owners to feel that they have ample open space to walk this dogs (and run and play with them too)
Screen Name Redacted 11/29/2023 11:18 AM	it allows for everyone
Screen Name Redacted 11/29/2023 11:21 AM	cyclists and peds mixed together
Screen Name Redacted 11/29/2023 11:36 AM	No swimming access for dogs

Screen Name Redacted

11/29/2023 12:17 PM

Option b has a great traffic flow. Reduce the possibility of causing the conflict with dog owner cyclist and walkers. And very specific divisions of dogs . Make sure that dogs and owners can find their own suitable space to enjoy the time in park.

Screen Name Redacted

11/29/2023 12:19 PM

This option would address the potential conflicts between cyclists or pedestrians with off-lease dogs but it gives dogs a much smaller fenced area to roam around freely

Screen Name Redacted

11/29/2023 03:27 PM

Like the idea of fully fenced area for dogs, but don't like 3 separate areas as that reduces the running area. If this option is opted for I would suggest only 2 sections. One for Small and nervous dogs and 1 for all size dogs.

Screen Name Redacted

11/29/2023 03:43 PM

This option is ok but not ideal. There are other options for fenced in dog parks. The reason we like Bark Park is to be able to walk and have open space. This eliminates that.

Screen Name Redacted

11/29/2023 04:52 PM

I have a small do so I like this option best - I can see it being a problem if you have both a small and a large dog

Screen Name Redacted

11/29/2023 05:06 PM

The beauty of the off existing off leash area is the large space to roam. I appreciate the options at Steveston (big and small dog areas) but that doesn't need to be in every off leash area. It will also destroy the uniqueness that is the 3rd dog park.

Screen Name Redacted

11/29/2023 05:15 PM

Option B allows dogs of different sizes and temperaments to be separated and also provides access to the dike trail to all. The area north of the dike trail allows dogs on leash to pass each other in both directions safely.

Screen Name Redacted

11/29/2023 05:52 PM

Too obstructive

Screen Name Redacted

11/29/2023 05:36 PM

This seems the safest option for everyone.

Screen Name Redacted

11/30/2023 06:47 AM

We have a small dog, so like having the option to place our small dog in a small off leash area just like the one in Steveston. It should have been this configuration all along.

PRCS - 141

Screen Name Redacted

11/29/2023 07:46 PM

More secure for the dogs so they cannot get into the river. Our previous dog would always head for the water. That is why we seldom went to the dog park. Not sure about our current dog as we have not taken her there yet.

Screen Name Redacted

11/29/2023 10:03 PM

The bark park is meant to be a free zone for dogs. Cyclists come zooming through - the cyclists should really just go a different route. Hopefully the Steveston highway pathway will help.

Screen Name Redacted

11/30/2023 12:01 AM

It bisects the area for the dogs and cyclists do not have the opportunity to view the river. It is lipstick on a pig in terms of coming up with an enhancement

Screen Name Redacted

11/30/2023 07:18 AM

Again, the biggest part of the beauty of this park for me is the ability to take in sunrise and sunsets from the elevated dyke overlooking the water off leash with my dog.

Screen Name Redacted

11/30/2023 10:33 AM

This is similar to the off-leash spaces already available in other parks

Screen Name Redacted

11/30/2023 12:30 PM

So many dog parks already in the city

Screen Name Redacted

11/30/2023 01:12 PM

Love this option in addition to A as well. I like the that off leash area is fully fenced in. Again, no risk of off leash dogs getting out.

Screen Name Redacted

11/30/2023 01:52 PM

This simply does not make sense as an option. We already have a small fenced in area for small/big dog separation at the steveston dog park. Larger dogs need a larger space to be able to stretch their legs out and actually run around/get exercise. This would be a poor choice for dog owners in an attempt to appease cyclists which I feel the city has already done plenty enough for.

Screen Name Redacted

11/30/2023 02:03 PM

Not music off-leash space. The Flex area is more space than the off-leash area - if this is to be called the Bark Park, it should be oriented toward serving as an off-leash area for dogs and owners. There are plenty of other spaces all along the river dyke system for others to enjoy; let's allow this space to be used by the very many dog owners who live in the area.

Screen Name Redacted

11/30/2023 04:00 PM

Good mix of trails, kept the existing ones, better off leash zone

Screen Name Redacted

11/30/2023 07:00 PM

I would stop visiting bark park if this option were chosen. It drastically reduces the usable area for off-leash dogs. I currently visit bark park over other dog parks because I get to walk with my dog along the path. If this option were chosen, I would just stand in a fenced area while my dog plays, like every other dog park in Richmond. I wouldn't get any exercise and it would be harder for my dog to get away from any dogs she doesn't like. My dog loves playing with big and small dogs so one of the reasons I visit bark park is because there is no separate areas for large and small dogs. This option would take away everything I enjoy about bark park and make it primarily for cyclists and pedestrians.

Screen Name Redacted

11/30/2023 11:22 PM

Segregating the dogs takes a great space where dogs can run and get needed exercise and completely destroys it

Screen Name Redacted

12/01/2023 12:46 AM

Similar to what it used to be, better if the water fountain is relocated.

Screen Name Redacted

12/01/2023 09:46 AM

There needs to be a solid fence separating dogs and bikes. Separating small from large dogs, ok but there are several parks that offer that in the area

Screen Name Redacted

12/01/2023 10:06 AM

I think this is a good option for cyclists and pedestrians. It almost balances off the 3 user groups (dogs/dog owners, peds and cyclists) most evenly IMO. Though it will still remain the largest off leash dog park with the three corralled areas, the dog owners will only see this option as a loss to the cyclists ("The cyclists won") so the largest interest group on this site will not be in favour of this option.

Screen Name Redacted

12/01/2023 12:31 PM

Bark Park is unique because it is different than typical pens for dogs at other parks. Not sure than has been many negative interactions between small and large dogs here so is this solving a problem that doesn't exist? Dogs would lose access to river for swimming.

Screen Name Redacted

12/01/2023 03:14 PM

Reduces the dog park (current/existing use) by about half.

Screen Name Redacted

12/01/2023 06:42 PM

We love walking beside the river while our dog plays and visits other dogs. That is what makes the park special. We have no need of the typical fenced in areas that can be found at other dog parks. That would be such a loss!

Screen Name Redacted

12/01/2023 07:30 PM

It creates a small and inadequate space for the number of dogs who use Bark Park to run and play.

Screen Name Redacted

12/02/2023 11:39 AM

Fenced off separated dog areas by size which is a nice option to have

Screen Name Redacted

12/02/2023 12:47 PM

The enclosed space is too confined (not wide enough). The best part of this dog park is that I can go for a walk with my dog without him being on a leash. With this option I would be standing still inside the fenced area.

Screen Name Redacted

12/02/2023 06:35 PM

Having fenced areas for the dogs defeats the purpose of this open area dog park. Most people come here to*walk* their dogs, not stand around and watch them play.

Screen Name Redacted

12/03/2023 07:18 AM

Smaller dog area. Higher maintenance costs.

Screen Name Redacted

12/03/2023 09:17 AM

I like that there is a route through for pedestrians and cycles that is separate from the off leash dogs. Dogs often chase bikes and go for my ankles

Screen Name Redacted

12/03/2023 12:00 PM

waste value for tax money collected for our community

Screen Name Redacted

12/03/2023 02:32 PM

It's fine but I feel like makes the off leash area smaller than it needs to be.

Screen Name Redacted

12/03/2023 03:30 PM

Dog area looks too small.

Screen Name Redacted

12/03/2023 03:41 PM

The dogs don't have as much total room but I like the idea of separating large and small dogs.

Screen Name Redacted

12/03/2023 07:09 PM

The most important of this enhancement is to provide the highest degree of separation and security for dogs off-leash. Option B provides this enhancement. This options follows the best management of off-leash park. The separation will keep the dogs running into walkers, cyclists and runners.

Screen Name Redacted

12/04/2023 11:42 AM

Better safety for dogs and for bikes. I'm an owner of 2 dogs but also a gravel bike cyclist who passes through there at least once a month

Screen Name Redacted

12/04/2023 02:03 PM

Directing cyclists into the parking lot is dangerous already! or directing them into the pedestrian path doesn't resolve the issues cyclists currently experience. I believe that most cyclists do not have the park as a destination but are trying to pass through the area without being attacked by dogs. There is no need to have site furniture for cyclists.

Screen Name Redacted

12/04/2023 02:08 PM

This would be a direct access IF cyclist used that part of the dyke for travel but, they don't. they use the road access. No one rides from the dock area to the pathway, unless they've just used that washroom. This looks good on paper, however I noticed on the popup signage boards when we were there, a dog walker posted a sticky note saying the dogs would be deprived of the water access. (Sigh). However, the layout of 10 benches on the top is a game-changer on this idea due to the fact that most cyclist just ride through here. We usually continue on to the other side of the industrial building & stop at the other side, (Dogpark2) where it is quieter there. It would be nice to have a few more benches & or table street furniture on that trail side of this route opposed to having it all on the top of the trail. We only want to use this trail as a throughfare to the other side of the industrial compound, not as a destination. I'd give it to the Dog-walkers.

Screen Name Redacted

12/04/2023 03:20 PM

This is the worst option. It is basically taking away the off leash trails leaving just the lawn and bushes it is hard for the dogs to just take a walk.

Screen Name Redacted

12/05/2023 10:44 AM

Option C is the closest to how things are now and have been for years. I do not understand why this is an issue now. We have lived in Richmond for over 40 years and have always had dogs and to have this area to exercise them has been very appreciated. Why can't people get along and share what is available to them.? We are speaking about approximately 500 metres of dyke.

Screen Name Redacted

12/05/2023 10:52 AM

Creating a "dog park" that has areas where dogs have to be on leash and areas where dogs can roam freely will simply result in the same issue that currently exists. The more unenforced rules introduced to a space will result in more conflict and ultimately more unhappy users. Furthermore, if a space is designated as a "dog park" it should service the needs of dogs as dogs. Option B and option C seem to be predicated on the fact that all dogs are always: well behaved, have good recall, always listen to commands, read signage, can deduce the invisible line between "off leash" boundaries and "on leash" boundaries, etc.

Screen Name Redacted

12/05/2023 03:09 PM

as above

Screen Name Redacted

12/06/2023 09:38 AM

Like the option for small dog enclosure, but less dog area so kind of makes wasted space.

Screen Name Redacted

12/07/2023 12:08 AM

Interesting attempt but I can foresee low compliance for people cycling and rolling to obey the "no cyclists" portion of the path.

Screen Name Redacted

12/07/2023 05:45 PM

same as 5

Screen Name Redacted

12/07/2023 10:23 PM

Not enough space for dog walking

Screen Name Redacted

12/08/2023 03:58 PM

too expensive - too much fencing

Screen Name Redacted

12/08/2023 05:47 PM

Not enough off leash space

Screen Name Redacted

12/08/2023 06:48 PM

It might cost more (more fencing). However, I do like the idea of separate areas for small and big dogs for safety reasons.

Screen Name Redacted

12/08/2023 08:31 PM

City has too many gated options already. This is one if not the only city park that truly offers an expansive open area

Screen Name Redacted

12/08/2023 08:54 PM

Makes the off leash park no longer an "off leash" park. We call the south arm one the dog park because it's fenced and bark park off leash park. I feel like we would lose the natural nature park feel

PRCS - 146

Screen Name Redacted

12/11/2023 11:59 AM

There are already multiple fenced-in dog parks in the city; more variety is better.

Screen Name Redacted

12/12/2023 09:11 AM

prefer biking closest to river

Screen Name Redacted

12/13/2023 02:01 PM

Consistency with the rest of the dyke trails which are designated as MUP as well as protection small dog from irresponsible large dog owners

Screen Name Redacted

12/13/2023 02:52 PM

No cages please

Screen Name Redacted

12/13/2023 02:55 PM

if I am driving here I do not want my dog on a leash

Screen Name Redacted

12/13/2023 03:00 PM

not a good idea

Screen Name Redacted

12/13/2023 03:02 PM

not good

Screen Name Redacted

12/13/2023 03:05 PM

dogs are too segregated in the enclosures

Screen Name Redacted

12/14/2023 12:11 PM

should be allowed to access the water as above

Screen Name Redacted

12/14/2023 12:14 PM

insufficient space for dogs

Screen Name Redacted

12/14/2023 12:20 PM

the beauty of Bark Park is the lack of fencing. Dogs are free to roam. If I wanted fencing, I could go to Steveston or South Arm. Bark Park is singularly unique in this respect.

Screen Name Redacted

12/14/2023 12:22 PM

limited space for off-leash area limited freedom for dogs

Screen Name Redacted

12/14/2023 12:29 PM

no fenced in areas - "pens" people and dogs in

Screen Name Redacted

12/14/2023 12:35 PM

provides the highest degree of separation and security of the dogs off-leash, follows best management practices for dogs off-leash parks

Screen Name Redacted

12/14/2023 12:40 PM

there are enough fenced in dog parks. we come to the Bark Park to walk

Screen Name Redacted

12/14/2023 12:46 PM

this would ruin the dog park. bad for everyone except for bikes. Ridiculous and terrible.

Screen Name Redacted

12/14/2023 12:48 PM

horrible idea

Screen Name Redacted

12/14/2023 12:54 PM

bikes need own path - no nogs, no peds

Screen Name Redacted

12/14/2023 12:55 PM

leave as is

Screen Name Redacted

12/14/2023 01:33 PM

Same as Option A (I feel both are great and either would be a great improvement) - Having a clear separation from the off leash dogs and other users is a great idea (since unfortunately there are a few irresponsible off-leash dog owners who do not have control over their dogs).

Screen Name Redacted

12/14/2023 06:10 PM

Again, the PDF is not accessible for screen readers, but the smaller/large dog separation is interesting. Wondering how that is defined/enforced in this area/ Also, how are signage/information presented as I have sight loss and may not know which part of the park I am in.

Screen Name Redacted

12/15/2023 09:26 AM

Seems like it's the best all around fit that caters to most groups.

Screen Name Redacted

12/15/2023 09:40 AM

Traps dogs into a fenced area where they currently have a decent, unbounded areas to play in. This is a massive over prioritization of a small minority of people who have issues with a small minority of dogs. I wouldn't take my dog to walk in that fenced off area. It denies me my walk. Owners with dogs in pens tend to stand around and

watch rather than walk with their dog. Humans don't want to walk around in small pens. It may be "best practice" under some metrics but it's a terrible solution in practice. I won't take my dog to a fenced off park unless it is the last option. All this will do is push more dogs to the beaches below the tideline and encourage/force more unauthorized off-leash exercise in other areas. Change this park to the absolute minimum. It's the best-located dog park in the City and shouldn't be managed to the lowest common denominator (bad dog owners & scared cyclists). This is a HORRIBLE solution. Please, please don't go down this route.

Screen Name Redacted

12/15/2023 04:19 PM

Too cut up

Screen Name Redacted

12/16/2023 06:52 PM

converse of option a

Screen Name Redacted

12/17/2023 04:28 PM

There is already very very few real off-leash areas in the city. This basically eliminates this dog park as a dog park and just gives the dogs some cages.

Screen Name Redacted

12/17/2023 10:50 PM

- Leads to very little space for dogs - Benefit that people walking have a path option that doesn't conflict with people cycling

Screen Name Redacted

12/22/2023 04:43 PM

I like this plan, but it's not my favourite

Screen Name Redacted

12/25/2023 04:00 PM

Total deviation from the park we have or had

Screen Name Redacted

12/26/2023 12:07 PM

I completely disagree with Option B. It takes the off-leash area and turns it into a fenced backyard.

Screen Name Redacted

12/28/2023 12:25 PM

I watch dog ownership continually getting cornered to such a degree that it's effectively impossible to be able to have a dog. Dog owners are being cornered in every aspect of life. Unless you own your own your own home it's nearly impossible to find a place to live. This option is simply another corner for owners of dogs to be placed in. Supplemental to the cornering of dog owners, the amount of deference that is being awarded to cyclists is becoming absurd. Millions of dollars being spent on bike lanes that are relatively empty compared to the dog park on a daily basis can be seen everywhere.

On any given day, rain or shine, we see hundreds of dog owners at this park. On this same rainy days, you barely see a cyclist. Yet we're corralling the dog owners and deferring to cyclist who simply need to slow down and/or walk their bikes for this short distance.

Screen Name Redacted

12/28/2023 03:51 PM

Dogs need their freedom to run around and not fenced in. It's the cyclists who do not obey the rules and they blame their inconveniences on dogs!

Screen Name Redacted

1/01/2024 10:07 AM

No opportunity for owners to actually walk with the dog. A fenced off grassy area is not interesting or challenging for the dog. I would not frequent this park if this is how it looked.

Screen Name Redacted

1/01/2024 09:32 AM

Most of the fenced of dog parks are too small and boring for the dogs. Dogs love to explore and run around. So that's what has always made the dog park at number three road so great. The city ruined it by also destroying the tall grass area by the big tree with the swing. Dogs loves runing through the tall grasses there and hiding and playing etc. It's a real shame that that area was destroyed.

Screen Name Redacted

1/02/2024 10:25 AM

It leaves the most separation between people who want to walk and the off leash dogs. Not everyone wants to be around dogs.

Screen Name Redacted

1/04/2024 05:48 PM

While fenced dog parks are fine, the reason we like this particular dog park is because the wide open spaces actually mean less interaction with other dogs unless our dog wants it and allows us to have a good walk as well. Breaking it up into smaller pieces would make it not useable for us; we don't like any of the fully-fenced, smaller dog parks because of the forced proximity to other dogs and the inability to walk in any meaningful way around them. We want to wander off-leash with our dog, not be trapped in a box.

Screen Name Redacted

1/04/2024 05:54 PM

Not at all a great option if you want to toss a ball for your dog in the enclosure(s) Unless you visit when empty

Screen Name Redacted

1/04/2024 05:57 PM

Keeps dogs and people separate.

Screen Name Redacted

1/04/2024 06:03 PM

This is the perfect compromise and provides greater safety for the dogs with the fence restricting access to the river and potential tragedy **PRCS - 150**

Screen Name Redacted 1/04/2024 06:05 PM	Too much separation/segregation for the dogs
Screen Name Redacted 1/04/2024 06:11 PM	This option doesn't seem to make the most use of the green space between the two trails.
Screen Name Redacted 1/04/2024 06:11 PM	Great idea. 3 parks. Keep dogs all happy. And owners.
Screen Name Redacted 1/04/2024 06:11 PM	Gives the most area for the figs
Screen Name Redacted 1/04/2024 06:16 PM	Too restrictive. The whole idea of off leash is to give dogs an opportunity to run, play, interact in a positive way; to give owners space to play with their dogs without worry of interfering with other dogs and their owners. Some of the other off-leash parts are no better than extra large back yards. This park has trees, obstacles, differentiated grounds that dogs can explore, enjoy, frolic and pass through to a "new" kind of area.
Screen Name Redacted 1/04/2024 06:16 PM	This option seems quite complex and divides up the area more than necessary. Potential for continued conflict.
Screen Name Redacted 1/04/2024 06:21 PM	I think the current trail use is the best design and the addition of the fence will help.
Screen Name Redacted 1/04/2024 06:28 PM	Good separation and path for pedestrians and dogs on leash. However the multi-use path should NOT include dogs on leash since leashes used are often the cord reel type that allow dogs to be far from owner.
Screen Name Redacted 1/04/2024 06:29 PM	Too complex and impossible to supervise
Screen Name Redacted 1/04/2024 06:41 PM	Again - I don't think it's fair to limit the view from dog walkers. It was one of the reasons I chose to take my dog here in the past.
Screen Name Redacted	This cuts down on the amount of space being made available for

1/04/2024 06:42 PM

dogs. There is no need for a second cycle path.

Screen Name Redacted

Might work

1/04/2024 06:56 PM

Screen Name Redacted

Again, I disagree with the fenced area proposition

1/04/2024 06:59 PM

Screen Name Redacted

I prefer to have a larger, open dog friendly space. Option B creates 3 smaller spaces for dogs, which I feel is unnecessary as the space will become smaller and there are already multiple similar options (with 2 separate spaces) in other dog parks in the city. Dogs really should be able to play with each other, no matter the size. I feel that is unnecessary to separate them.

1/04/2024 07:05 PM

Screen Name Redacted

No access off leash on the dyke side

1/04/2024 07:14 PM

Screen Name Redacted

What I like most about this dog park is I can walk the dyke from one end to the other while my dog runs and plays nearby. Instead of just standing around in specific zones, owners can walk the pathway or perimeter. I'd like to see the fenced area kept as the entire length of the dyke. If the park were separated into zones, I would likely stop visiting because the ability to walk the length of the park is what makes it unique.

1/04/2024 07:35 PM

Screen Name Redacted

I think everyone should be able to use the area near the water

1/04/2024 07:39 PM

Screen Name Redacted

Provides the greatest amount of off-leash exclusion zone.

1/04/2024 07:44 PM

Screen Name Redacted

still close to the water

1/04/2024 07:43 PM

Screen Name Redacted

Smallest area for dogs. No off leash path at all. This takes away the beauty of off leash walk path Bark Park has. We have enough dog park that's just a little fence off area around Richmond. These park doesn't allow trail/path walking. We need more off leash trails in Richmond.

1/04/2024 07:56 PM

Screen Name Redacted 1/04/2024 08:10 PM	There is a separate pedestrian walk for people and dogs on leash. The off-leash area is ample size for those who want to let their dogs run. Cyclists can be accommodated on the multi-use path.
Screen Name Redacted 1/04/2024 08:21 PM	I take my dogs to Bark Park to be able to walk along the path with them, not to put them in to an enclosed space.
Screen Name Redacted 1/04/2024 08:47 PM	Same as above
Screen Name Redacted 1/04/2024 08:49 PM	Same as above.
Screen Name Redacted 1/04/2024 08:54 PM	Many available fenced parks. Steveston is great for both large and small separated
Screen Name Redacted 1/04/2024 09:06 PM	It would reduce conflict for sure. But, it would feel too much the same as other fully-fenced dog parks in Richmond.
Screen Name Redacted 1/04/2024 09:26 PM	Question need for different off leash areas based on size.
Screen Name Redacted 1/04/2024 09:29 PM	I like this option the best. We need segregation between dogs and bike riders, joggers as I have been attacked by an off leash dog on my bike before.
Screen Name Redacted 1/04/2024 10:17 PM	Over complicated.
Screen Name Redacted 1/04/2024 10:20 PM	Greatest degree of separation. Safest. People get to enjoy the view of the river.
Screen Name Redacted 1/04/2024 11:32 PM	Too restricted, same format as most dog parks in Richmond.
Screen Name Redacted 1/04/2024 11:59 PM	Most sensible; dedicated path for pedestrains; separate fenced areas for different sizes of dogs is a great idea.
Screen Name Redacted	Not sure about dividing dogs

1/05/2024 06:30 AM

Screen Name Redacted

Provides some separation and safer

1/05/2024 07:47 AM

Screen Name Redacted

Would like the sloped area up to dike trail to be included in off leash area as dogs love this.

1/05/2024 08:14 AM

Screen Name Redacted

separation of bikes is important

1/05/2024 08:58 AM

Screen Name Redacted

I don't like th broken up park for the dogs

1/05/2024 10:07 AM

Screen Name Redacted

Separates cyclists and pedestrians.

1/05/2024 10:11 AM

Screen Name Redacted

The off leash enclosures are too small. The nice thing about the current No. 3 Road dog bark is that there is a large open space for them to run and it never feels crowded. There are a lot of fenced in dog parts all over Richmond for just small dogs. It is nice to have an option of a larger space where all dog sizes can play together. This provides good socialization for both small and large dogs, especially if dog owners start this socialization at a young age.

1/05/2024 10:45 AM

Screen Name Redacted

Provides the clarity for all in terms of what areas are available for use and makes it an equitable split between general users and dog owners of all sizes.

1/05/2024 11:44 AM

Screen Name Redacted

The actual space for dogs seems smaller than the other two. But I did like that the dogs could not run into the paths.

1/05/2024 12:07 PM

Screen Name Redacted

The draw to the Bark park is that we can go for a walk with our dog off leash. There are other fenced in dog parks that we don't go to. I want to walk with my dog in a natural setting close to home not stick them in another confined area.

1/06/2024 04:16 PM

Screen Name Redacted

This option creates a continuous path along the dyke for pedestrians and cyclists, with a large space for dogs to run around without interfering with cyclists. This is a good idea for small dog owners to feel comfortable with their dogs playing with other dogs of a similar

1/05/2024 12:45 PM

size. I'm not a dog owner personally, so I support options A and B and feel that dog owners should decide what's best between options A and B.

Screen Name Redacted

1/05/2024 01:26 PM

I come to the dog park to give my dog freedom to be off a leash. If I want to take my dog to a fenced in park, there are several located closer to me than the Bark Park

Screen Name Redacted

1/05/2024 01:50 PM

As for #5. I have large dogs and don't worry about separation by size, but would be happy to accommodate those who do.

Screen Name Redacted

1/05/2024 02:29 PM

Multi use trail- dogs will be off leash no matter what the sign says.

Screen Name Redacted

1/05/2024 02:55 PM

This will destroy Bark Park.

Screen Name Redacted

1/05/2024 03:18 PM

The main attraction for people walking along the dyke, is to be along the dyke. This solution is more fences, and we also end-up with people that end-up walking their dogs on the dyke, particularly if they are off-leash. I've seen a few too many run-ins and heard a few elevated voices when you have dog-owners and non-dog-owners challenging each other in this park. The better solution is to use A, and to set up the fencing in such a way that it is unattractive for walking a dog on the dyke portion here.

Screen Name Redacted

1/05/2024 08:32 PM

Maintains flow of movement along dike trail

Screen Name Redacted

1/05/2024 09:37 PM

Clearer rationale for cyclists to just go straight through from the parking lot

Screen Name Redacted

1/06/2024 11:38 AM

This is the only one of the given options that is fair for all users. This way is safe and convenient for everyone to use the dyke path if they wish and for dogs of different sizes to get exercise and play, including options for dog owners to choose a different fenced are if their dog does not get along with a dog in another fenced area. Best of the suggested solutions.

Screen Name Redacted

1/06/2024 12:01 PM

A gated area is great for the dogs. Also creating a barrier/fence that prevents dogs from going on either trail is helpful

PRCS - 155

Screen Name Redacted

1/06/2024 12:10 PM

I don't support or see the need to separate large and small dogs.

They currently coexist well here.

Screen Name Redacted

1/06/2024 03:08 PM

Bikers should be on bottom path or not allowed in park to begin with

Screen Name Redacted

1/06/2024 07:49 PM

Looks too limiting for dogs

Screen Name Redacted

1/06/2024 07:57 PM

Don't agree with the zones. As mentioned in support of option A, the reason we attend bark park is the large open area for all dogs. The fully enclosed dog parks don't offer enough room to run so dogs engage in more wrestling, less energy draining, so more amped up and can lead to more aggressive behaviours. Dog zones can often lead to more conflicts between dog owners. It is still incumbent upon dog owners to be responsible dog owners, have control of their dogs when necessary but the current more open large areas allows dogs to run, play, engage, and sort out their own conflict.

Screen Name Redacted

1/06/2024 08:04 PM

Strongly dislike this option. This simply does not make sense. We already have fenced in areas and with small/big dog separation. This is essentially a pen, with no walking path. This does not afford real exercise for dogs and owners. This seems a very poor idea - perhaps an attempt to appease cyclists (?) who already have plenty of options.

Screen Name Redacted

1/06/2024 09:10 PM

no keen on 3 separations for dog owners

Screen Name Redacted

1/07/2024 08:01 AM

We don't need enclosed areas like Steveston and Garden City parks in Bark Park. If people like that type of space, then they should go there.

Screen Name Redacted

1/07/2024 10:50 AM

wasted space

Screen Name Redacted

1/07/2024 04:12 PM

If there will be separate play zones for dogs, maybe have one for well socialized and friendly dogs with good recall, and one for dogs learning to get along and those who require a muzzle.

PRCS - 156

Screen Name Redacted

1/07/2024 04:14 PM

It controls conflict points. But I prefer that a larger area is available for off leash dogs.

Screen Name Redacted

1/07/2024 08:21 PM

Off leach area is too limited and the area is most likely to be flooded

Screen Name Redacted

1/07/2024 09:04 PM

Cyclists should be allowed to ride along the river's edge. Not as good as Option A because dog owners are used to being able to walk freely with their dogs and should not be confined to restricted and gated areas.

Optional question (220 response(s), 36 skipped)

Question type: Essay Question

Q7 The reason(s) why I rated OPTION C as I did above are:

Screen Name Redacted

11/29/2023 11:06 AM

provides larger off-leash area. slope may be enrichment for some dogs.

Screen Name Redacted

11/28/2023 10:44 AM

We enjoy walking on the upper dike trail along the water with our dog off leash

Screen Name Redacted

11/28/2023 11:28 AM

The separation between pedestrians & cyclists with dogs off leash are important for multi-use in this area, and I support the proposed blocked off areas & trail here. However, I don't enjoy this option as much because this option would limit the scenery and enjoyment of the Fraser River view for pedestrians in the multi-use trail area compared to Options A & B.

Screen Name Redacted

11/28/2023 03:30 PM

I don't like the idea of dogs only having freedom in confined spaces

Screen Name Redacted

11/28/2023 03:34 PM

There are limited large trail options for dogs in Richmond. Fenced dog parks are not suitable for all dogs and contribute to pathogen outbreaks. This option provides the less space than option A but still punishes dog users from accessing large sections of a DOG PARK.

Screen Name Redacted

11/28/2023 05:58 PM

It cuts the park in half for dogs that are off leash and provides a narrow strip on the North side for those on leash. The North strip

looks wider on the picture than it is in person. And while it gives the off leash dogs and their owners access to half the park on along the South trail and being able to see the river, it seems like a lot to give up for the 5-10% of cyclists who won't just slow down to walking speed. Why not just divert those cyclists up No. 3 Rd. and along Finn Rd.? It's such a short couple a hundred yards to the end of the park by Crown Packaging and then narrow trails around the building in order to get to Garden City Rd. where they have to slow to go around corners. There is a straight narrow path along the North side of Crown Packaging that I can only imagine is very unsafe for any dog on or off leash or any people walking... again for the 10% who insist on going fast.

Screen Name Redacted

11/28/2023 06:28 PM

This is my least favourite option because it keeps the steep rocks as a part of the off leash dog area. I would prefer to have that dangerous part of the dyke fenced off to dogs.

Screen Name Redacted

11/28/2023 06:37 PM

I'm a disabled person and I have a hard time walking and I use my bicycle to walk my dog. I love this park because this is basically the only place in Richmond where I can have my dog off-leash and ride a bicycle. Option C gives no option of having my dog off-leash while riding a bicycle simultaneously.

Screen Name Redacted

11/28/2023 06:34 PM

Why shud the off leash dog owners have dyke access and others not?! People first!!

Screen Name Redacted

11/28/2023 06:32 PM

See 6

Screen Name Redacted

11/28/2023 06:34 PM

Allowing dogs on the upper walkway will conflict with pedestrians as some dogs are aggressive

Screen Name Redacted

11/28/2023 06:38 PM

The third option takes a space already made narrow by the dyke raising and further decreases the space available to dogs. The area on the north side of the cycling path would be uses by no one.

Screen Name Redacted

11/28/2023 06:44 PM

This is the obvious solution. It forces cyclists to do what the signs already require them to do, and separates them from the dogs while still allowing dog walkers on the dike trail.

Screen Name Redacted

This gives dog owners a beautiful view while walking and lots of

11/28/2023 06:36 PM

space for dogs to play

Screen Name Redacted

fencing

11/28/2023 06:38 PM

Screen Name Redacted

A is the best

11/28/2023 06:38 PM

Screen Name Redacted

Dodd are dirty and carry disease. Not to mention there is no legal defence against getting bitten by a dog. There needs to be three conditions. 1- dogs must be insured for liability to use public space. 2- if money is to be spent to build something it should be At the users expense. If I want to use the boat ramp to go fishing at Iona Beach I need to pay over \$100 a year for the permit to do so. Fair is fair, they need to pay For use of the park as well. 3- It must be clear that if something happens to a person, especially a child that there would be legal ramifications. By that I mean severe penalties. People are too easy-going when it comes to animals. Even after somebody gets hurt. I am this blunt about this because the level of blindness, blissful ignorance and denial from people before, and after an incident is absolutely unacceptable, and it repeats itself all the time. Google kids being mauled by dogs. I believe the figure is 300,000 dog bites a year in Canada alone. And police need to be protected from animal advocates, agencies and groups for doing the right thing. I did not forget the lady who got Mauled by her own dog for almost half an hour in an elementary school playground only to have the police shoot in the air to purposely missed the animal because they would be in deep shit if they hurt it. The dog subsequently went to runoff in the residential sum divisions. What was done? Nothing. And that an essence is the problem.

11/28/2023 06:54 PM

Screen Name Redacted

just didn't like it

11/28/2023 06:43 PM

Screen Name Redacted

Maintains waterside path for dog walkers. The cyclists are riding through this park so quickly and have little interest in the views or the seating benches. The upper path is best suited for pedestrians and their dogs.

11/28/2023 07:01 PM

Screen Name Redacted

I walk this trail multiple times a week with my dog and kids. Cyclists do not use the bottom trail and on-leash dogs with behaviour issues are being walked on an off leash trail. I would like to see a large off leash area, clear large signage with some sort of physical median to stop cyclists from riding the off leash area and an enclosed dog area

11/28/2023 06:58 PM

for puppies, small dogs or people who feel their dogs are safer in an enclosure. Also a washroom would be ideal on the Finn Slough side if you're walking from 3rd that's a wait.

Screen Name Redacted

11/28/2023 07:05 PM

Dogs should never be allowed off leash on a trail, only within a fenced-in park. Off leash dogs occasionally attack joggers (or anyone moving quickly). Dogs should only be allowed on paths when leashed so people can consent to being around off-leash dogs by entering the enclosed area where they're permitted.

Screen Name Redacted

11/28/2023 07:11 PM

The trail not along the river re view

Screen Name Redacted

11/28/2023 07:09 PM

Largest off leash area with river side path included

Screen Name Redacted

11/28/2023 07:23 PM

Great enclosed area that's big enough for dogs

Screen Name Redacted

11/28/2023 07:37 PM

Doesn't look like walkers and runners are welcome on the south path.

Screen Name Redacted

11/28/2023 07:40 PM

I'm happy to accept anything you decide to do because I'm not a dog owner and only rarely walk in this area. I believe you are doing an excellent job for our city. Thank you for your service! 😊

Screen Name Redacted

11/28/2023 07:43 PM

Most closely resembles the current configuration and allows dogs to be off leash on the dyke but appears to be more expensive and difficult due to the removal or relocation of the site conveniences (e.g. water fountain, benches, picnic tables).

Screen Name Redacted

11/28/2023 07:45 PM

The river is still easily accessible

Screen Name Redacted

11/28/2023 07:50 PM

Complicated and confusing layout

Screen Name Redacted

11/28/2023 07:58 PM

Ideal from a dog owner perspective, the only place on the Dyke where owners and dogs can enjoy waterside access together off-leash.

Screen Name Redacted

11/28/2023 08:12 PM

Please, please, please stop working on the park!

Screen Name Redacted

11/28/2023 08:15 PM

Dog owners should not be given exclusive use of the dyke at a large additional cost

Screen Name Redacted

11/28/2023 08:18 PM

Too congested with pedestrians, dogs, and cyclists with only one lane multi-use

Screen Name Redacted

11/28/2023 08:19 PM

Provides the largest area for dogs -

Screen Name Redacted

11/28/2023 08:27 PM

A large part of the off leash area would be cut off. Bikes are the problem. Maybe ask them to dismount and walk through the area. It's not that long a distance. Also the city signage is ridiculously confusing. NOBODY is going to take the time to read them, they have so much information, it is like reading city building bylaws.

Screen Name Redacted

11/28/2023 08:34 PM

Dogs should NOT be off-leashed for everybody safety reason. The dog owners should be liable to oversee their dogs' behavior at all time. The dog owners should not download their responsibility to other park users. They should not override other people's usage of the park.

Screen Name Redacted

11/28/2023 08:51 PM

While it is nice that the off-leash area will be fenced off and therefore pedestrians and cyclists can feel safe knowing they won't have to worry about dogs running into their paths, this proposed option closes off the possibility for a segment of the park users from being able to enjoy the view from the elevated path. Not everyone is comfortable around dogs so as a pedestrian if I prefer not to walk in path where dogs are off-leash, with this Option C I would have no choice but to only walk in the MUP and not the elevated trail which is part of the off-leash zone, taking away an opportunity for me to enjoy the view of the river or sit on one of the benches watching the wildlife on the water. The same goes for cyclists to not have the option to stop and enjoy the view of the water.

Screen Name Redacted

11/28/2023 09:55 PM

The fence should be on along the north side of the park so cyclists have a designated segregated path keeping everyone safe. Confusion is the incorrect information of the current use of the park as per the information boards. There are no current on-leash areas at Bark Park. Confusing for everyone. Cyclists (such as myself)

PRCS - 161

prefer a designated segregated path for safety and confusion can be minimized with proper signage. Many of the trees along the north side were recently planted and can be re-located. Public safety is good use of tax payers money. Invest in a designated segregated bike path for decades of public enjoyment - safely. Another option needs to be presented that ensures the safety and enjoyment of all users. Other option is to re-route cyclists and have cyclists dismount through the Park.

Screen Name Redacted

11/28/2023 09:55 PM

Same as 'a'.

Screen Name Redacted

11/28/2023 09:56 PM

Same as above

Screen Name Redacted

11/28/2023 10:07 PM

Can't really see any pros.

Screen Name Redacted

11/28/2023 10:48 PM

I think this is the best option. We can enjoy the sea view freely with our dogs and they will not have a feeling they are in a constraint area.

Screen Name Redacted

11/28/2023 10:48 PM

I do not feel that my dog is safe with access to the river with this kind of shoreline.

Screen Name Redacted

11/28/2023 11:24 PM

My dog gets to swim. If signs go up properly there will be no confusion.

Screen Name Redacted

11/29/2023 02:32 AM

Separating off leash dogs and cyclists keeps everyone safe. This is the closest design to what we have now

Screen Name Redacted

11/29/2023 05:58 AM

Cyclists best on road part - no hill, easier passing and don't need river view as they are just passing through

Screen Name Redacted

11/29/2023 06:43 AM

While a better option it still excludes dogs from the river and from the open green space. Why not restrict bikers access? They can go anywhere they want in Richmond and we (dog owners) cannot.

Screen Name Redacted

11/29/2023 07:22 AM

This is a good balance of space for all parties involved

Screen Name Redacted
11/29/2023 08:15 AM
I don't think users passing through the area would like the option of not being by the river and this would create more disturbance to the environment.

Screen Name Redacted
11/29/2023 08:21 AM
No one but off leash has access to the dyke and no separation for small dogs.

Screen Name Redacted
11/29/2023 08:43 AM
As I mentioned in option A that lower area is the only clear area for dogs to run. This is not a bad idea, but lots of the trees on the grass would have to be removed. This also makes the park small as the path and area north are now 50% of the dog park area. Bikes only need a path and the upper one is perfect (Option a)

Screen Name Redacted
11/29/2023 09:15 AM
Off-leash area seems to have taken over south trail excluding those who just want to sit on the existing benches.

Screen Name Redacted
11/29/2023 09:03 AM
no more tree cutting!

Screen Name Redacted
11/29/2023 09:49 AM
Any safety enhancements would be a benefit.

Screen Name Redacted
11/29/2023 10:07 AM
Decent size dog off leash zone If Option C is 'cheaper' to do then I guess Option C is better than Option A, if not, I will just stick with Option A

Screen Name Redacted
11/29/2023 10:26 AM
Too crowded on the multi-use trail

Screen Name Redacted
11/29/2023 11:10 AM
this is my second choice. see above. less dangerous

Screen Name Redacted
11/29/2023 11:13 AM
Pedestrians and cyclists in the same area as off-leash dogs is a bad idea.

Screen Name Redacted
11/29/2023 11:14 AM
I don't particularly how option C reduces conflict enough to avoid dog-cyclist conflict

Screen Name Redacted
takes me away from the original trail and river front

11/29/2023 11:18 AM

Screen Name Redacted

cyclists and peds mixed together

11/29/2023 11:21 AM

Screen Name Redacted

River access for dogs

11/29/2023 11:36 AM

Screen Name Redacted

Option b is better

11/29/2023 12:17 PM

Screen Name Redacted

With this option, cyclists and pedestrians are deprived of the beautiful views of the trail, all blocked by fences. It would be an ugly sight

11/29/2023 12:19 PM

Screen Name Redacted

Do not support this option as there is not enough shade in the summer Plus the rocks going down to the river are dangerous for dogs.

11/29/2023 03:27 PM

Screen Name Redacted

The slope being part of the dog park area is not ideal as it gets very muddy in the winter and I have slipped on that slope before. I know that the slope is also part of the dog side in Option A however the walking trail is at the bottom so people are less likely to need to go up the slope but in this option there will be many times we would need to go down (ie. pick up poop).

11/29/2023 03:43 PM

Screen Name Redacted

I think it would work

11/29/2023 04:52 PM

Screen Name Redacted

It provides for a designated separation between dogs and non dog folks, while still allowing access to the river - something many dogs enjoy (not mine! But many do). It maintains all the good parts of the dog off leash area, and ensures that anyone wanting separation has that opportunity as well.

11/29/2023 05:06 PM

Screen Name Redacted

This does not provide access to the dike trail along the river to the general public.

11/29/2023 05:15 PM

Screen Name Redacted

Too obstructive

11/29/2023 05:52 PM

Screen Name Redacted

11/29/2023 05:36 PM

As a runner I want to run along the water so would be upset if I was not able to do so because it was closed to pedestrians.

Screen Name Redacted

11/30/2023 06:47 AM

Do not like current configuration and Option C is similiar. This is why we do not take our dog to this Dog Park. We find this current Dog Park to be the worse for our little dog and a waste of tax payers money. It is a useless Dog Park as far as we are concerned.

Screen Name Redacted

11/29/2023 10:03 PM

Option A is by far the best.

Screen Name Redacted

11/30/2023 12:01 AM

Like Option B, the dog portion is bisected and seems to be aimed at separating pedestrians and cyclists. With better signage, most road cyclists will use 3 road and come back using 4 road. Those who rode along the trail up to 3 rd would continue into the dog park.

Screen Name Redacted

11/30/2023 07:18 AM

Of the 3 options this one is the best for me as a dog owner. it's not fair for walkers of the dyke to have to jog around the dog park missing a nice piece of the dyke but it is the best option for my situation.

Screen Name Redacted

11/30/2023 10:33 AM

I enjoy the oppportunity to walk along the water. I love watching the occasional dog swimming / testing the water's edge. Cyclists can still enjoy waterfront both east and west of Bark Park.

Screen Name Redacted

11/30/2023 12:30 PM

Not a good option due to incline on green area

Screen Name Redacted

11/30/2023 01:12 PM

I really dislike this option as it eliminates the option for cyclists and pedestrians to have access to the views of the water. The best part of this park is sitting on the benches up top by the water and taking a few minutes to just relax and recharge.

Screen Name Redacted

11/30/2023 01:52 PM

A good option for owners and dogs to get a circuit in for a walk by the water, enjoy the scenery, be separated from the cyclists to lessen frustration on both sides. The bark park is a great piece of land for owners and dogs alike to enjoy and this seems like the most practical option for separating the cycling and dog population while also meeting everyone's needs. It would obviously be preferable if the cyclists would be rerouted to not go through the bark park at all. It's dangerous and frustrating for all involved. If a dog gets hit by a bike (a lot of the bicyclists hit the dogs despite the speed limit) the dog

will be hurt but also the cyclists. I have a 100lb dog and while I worry about her being hit by a bike, I also worry for a cyclist if they were to hit her and then be upset with me because they got injured. There are cyclists that aren't even aware this is a dog park. There was a letter to the richmond news editor this past year from a cyclist angry that people let their dogs off leash on a cyclist trail, not even aware that this is actually the one large and safe off leash dog park in Richmond.

Screen Name Redacted

11/30/2023 02:03 PM

Good amount of space but I think it makes more sense to have the cyclists travel straight along the dyke trail rather than going into the area where there may be more pedestrians and dogs, even if they are on leash. The main issue is that cyclists do not slow down and seem to think that dogs and owners will see or hear them racing toward them and jump out of their way. Enforcing a cycling speed limit in areas like this is important.

Screen Name Redacted

11/30/2023 04:00 PM

Cyclists need to turn more

Screen Name Redacted

11/30/2023 07:00 PM

It allows a fair amount of room for dogs but there is a lot of wasted park space next to the North trail. This option would prevent dogs from being off-leash in the shaded area of the park (the North trail) and force them to use the unshaded dike trail. I think that many cyclists and pedestrians would still use the dike trail (as they currently do) for the water views and we would have the same conflict issues we currently have.

Screen Name Redacted

11/30/2023 11:22 PM

It makes the dog park no longer a dog park

Screen Name Redacted

12/01/2023 12:46 AM

Still too open

Screen Name Redacted

12/01/2023 09:46 AM

Cyclist and loose dogs do not mix, both can get badly hurt

Screen Name Redacted

12/01/2023 10:06 AM

Likely the most balanced solution for the two main opposing interests operating on this site. The bikers can still blast through on the existing north path as they do now and the dog owners get the large area and view of the river they always wanted. The key, as with any of these options, is that people follow the rules. That dog owners actually keep their dogs on leash outside of the dog park ie. in the green zone and cyclists don't ride along the dike/riverside path. Perhaps we wouldn't

be in this situation today if people followed the rules???

Screen Name Redacted

12/01/2023 12:31 PM

This option needs modifications to work. If the north path is widened with a physical barrier to split the path in two (north side for bikes and south side for people/dogs), this option could work. Dogs would lose access to grass on north side of path yet this could be an acceptable trade-off. People/dogs would maintain use of a circular path involving a connected north and south path. Challenge is interface to parking lot. Dogs would maintain water access to river for swimming.

Screen Name Redacted

1/04/2024 02:58 PM

Did not like the last changes leave as it is

Screen Name Redacted

12/01/2023 03:14 PM

Reduces the dog park (current/existing use) by about a third.

Screen Name Redacted

12/01/2023 06:42 PM

Ideally you would not make any major change, except fencing at the beginning and end of the park, directing bikers to get off their bikes or continue at "walking speed" because they are entering a dog park. If you are determined to make a major change, I like option C the best of the choices offered because it allows me to continue walking beside the river while my dog plays with other dogs.

Screen Name Redacted

12/01/2023 07:30 PM

It provides a relatively large space for the dogs and access to the water view for both dogs and their owners.

Screen Name Redacted

12/02/2023 11:39 AM

Same as it was before and will continue to have issues

Screen Name Redacted

12/02/2023 12:47 PM

It offers the best views of the river while my dog can be off leash. While its less space than option A its the best option. Ideally a new fenced path for cyclists can be put in on the other side of the tree line along the fence separating the farmland from the dog park.

Screen Name Redacted

12/02/2023 06:35 PM

Most similar to the present set up. Fencing off the bikes looks like a lot of unnecessary work and expense. Better signage, traffic calming measures for the bikes, or, best yet, disallowing bikes in the park and rerouting them north on No. 3, east on Finn Rd and south on Garden City. Bikes have access to the entire dyke system. This is the only portion that is accessible to walkers with their dogs off-leash. The adjacent roadways are low traffic and scenic and not much of a detour.

PRCS - 167

Screen Name Redacted

12/03/2023 07:18 AM

Worst option. Too expensive!

Screen Name Redacted

12/03/2023 09:17 AM

I like that there is a route through for pedestrians and cycles that is separate from the off leash dogs. Dogs often chase bikes and go for my ankles I think option C is the best for the dogs as they will be able to play in the water

Screen Name Redacted

12/03/2023 12:00 PM

poor value for tax money collected for our community

Screen Name Redacted

12/03/2023 02:32 PM

Definitely not along the desire lines of the park for users simply moving through it.

Screen Name Redacted

12/03/2023 03:30 PM

Offleash area doesn't look as big.

Screen Name Redacted

12/03/2023 03:41 PM

As pointed out, this option would be the most expensive, and seems like an unnecessary, less desirable option, in my view.

Screen Name Redacted

12/03/2023 07:09 PM

The current configuration is quite confusing for the cyclist to safely move away from the dog off leash area. The multi use trail is not easily assessed and the dogs will often run between the two areas. The option does not provide much enhancement to walkers, runners or cyclists.

Screen Name Redacted

12/04/2023 11:42 AM

as a cyclist, I would rather have the high river view.

Screen Name Redacted

12/04/2023 02:03 PM

I want to ride my bike through this park without stopping and unencumbered by dogs off leash so it is of no importance to me to have site furniture. I do not like the pictured fence...will it protect me from dogs that can jump over or fit through? maybe chainlink? Please do not direct cyclist into the parking lot with its huge potholes and distracted drivers and off leash dogs...it is truly terrifying. Modify the north side of the parking lot into a cycle path that safely directs us back onto the shared roadway. I'm okay with the south side flex dog on leash area but really would like a fence separating the multi use trail as dogs are unleashed consistently on the designated on leash areas especially on the trail from the east access.

Screen Name Redacted

12/04/2023 02:08 PM

I like this the best only if you remove the Northside parking lot & allowing the cyclist to merge with the trail after the entrance gating. this would eliminate the dangers of vehicles backing up & creating danger zones for cyclists. (As witnessed a few times while we were at the popup display booth.) google maps still has the temporary northside route on their website for clarity. Thank you for allowing us feedback on this topic. It was nice to meet & greet last Saturday. We ride all over the GVRD on the dikes & this area is the most problematic with large groups of dog walkers using all of the facilities. We just want a through-fare to safely ride to our destination not having to navigate with free range uncontrolled dogs.

Screen Name Redacted

12/04/2023 03:20 PM

The dyke trail is wide enough for multiple dogs to stroll around without feeling challenged.

Screen Name Redacted

12/05/2023 10:44 AM

Option C is the closest to how things are now and have been for years. I do not understand why this is an issue now. We have lived in Richmond for over 40 years and have always had dogs and to have this area to exercise them has been very appreciated. Why can't people get along and share what is available to them.? We are speaking about approximately 500 metres of dyke.

Screen Name Redacted

12/05/2023 10:52 AM

Creating a "dog park" that has areas where dogs have to be on leash and areas where dogs can roam freely will simply result in the same issue that currently exists. The more unenforced rules introduced to a space will result in more conflict and ultimately more unhappy users. Furthermore, if a space is designated as a "dog park" it should service the needs of dogs as dogs. Option B and option C seem to be predicated on the fact that all dogs are always: well behaved, have good recall, always listen to commands, read signage, can deduce the invisible line between "off leash" boundaries and "on leash" boundaries, etc.

Screen Name Redacted

12/05/2023 03:09 PM

as above

Screen Name Redacted

12/05/2023 03:51 PM

As I dog owner, I would like to enjoy the water view while my dog plays

Screen Name Redacted

12/06/2023 09:38 AM

Bad idea to make bike path divert to the back. The Finn Slough dog park already has water front access for dogs and dog owners.

PRCS - 169

Screen Name Redacted

12/07/2023 12:08 AM

Decent alternative to Option A- see comments in #5.

Screen Name Redacted

12/07/2023 05:45 PM

I think cyclists , unless dismounted, aren't benefiting as much from the view as dog walkers who have limited opportunity. Cyclists have lots of other dyke area to ride and enjoy the view. I have also been a cyclists.

Screen Name Redacted

12/07/2023 10:23 PM

Not enough space for dog walking

Screen Name Redacted

12/08/2023 03:58 PM

all the same issues we have now - no access to waterfront for cyclists and pedestrians who don't want to be with dogs

Screen Name Redacted

12/08/2023 05:47 PM

Just right

Screen Name Redacted

12/08/2023 06:48 PM

All of these options are great. This separation of dogs and cyclists is very much needed here.

Screen Name Redacted

12/08/2023 08:31 PM

Close to option A but I would prioritize flat open area for dogs

Screen Name Redacted

12/08/2023 08:54 PM

I enjoy the park as is right now but because of a recent altercation with a cyclist that was very aggressive towards myself, 10 year old son and our dog we no longer go because of safety concerns. Having a fence as a barrier to protect dogs and people from being run over by bikes would help but I think if it's called a off leash dog park bikes should be redirected elsewhere

Screen Name Redacted

12/11/2023 11:59 AM

Safer for off-leash dogs to be away from the rocks and water in the event that they bolt.

Screen Name Redacted

12/13/2023 02:01 PM

Not a viable option.

Screen Name Redacted

12/13/2023 02:55 PM

its the best of the all the above and we get no walk on the side where the water is.

PRCS - 170

Screen Name Redacted 12/13/2023 02:58 PM	keep area to the water for dogs closest to the options on the petition (physical segregation of the bikes from people / dogs)
Screen Name Redacted 12/13/2023 03:00 PM	not a good idea
Screen Name Redacted 12/13/2023 03:02 PM	good
Screen Name Redacted 12/13/2023 03:05 PM	very nice. closing the lower part and leading bikes away from the top trail.
Screen Name Redacted 12/14/2023 12:02 PM	it works for us. my dogs know the command "bike" and move to the side.
Screen Name Redacted 12/14/2023 12:11 PM	better option but dogs need to run
Screen Name Redacted 12/14/2023 12:14 PM	does not allow off-leash areas to north grass area
Screen Name Redacted 12/14/2023 12:20 PM	see reasons for Option A - making smaller an already small space
Screen Name Redacted 12/14/2023 12:22 PM	comfortable space for off-leash able to connect to the dyke, river people able to relax on the dyke with their dog(s)
Screen Name Redacted 12/14/2023 12:29 PM	kinda okay - should be closer to the north fence. segregation is safest.
Screen Name Redacted 12/14/2023 12:35 PM	multi-use pathway is detoured around the off-leash zone and away from the dyke trail
Screen Name Redacted 12/14/2023 12:37 PM	would prefer it to stay the same but add speed bumps & larger slow down signs. largest area for dogs to socialize & exercise safest area for all.
Screen Name Redacted	similar to option A however the slope when wet is very muddy

12/14/2023 12:40 PM

Screen Name Redacted

12/14/2023 12:46 PM

unworkable. put the bikes along along Finn Road or make a new paved path along the fence line.

Screen Name Redacted

12/14/2023 12:48 PM

unworkable

Screen Name Redacted

12/14/2023 12:54 PM

waterfront path ok for dogs on leash only

Screen Name Redacted

12/14/2023 12:55 PM

leave as is

Screen Name Redacted

12/14/2023 01:00 PM

reverse options 3 on Finn Slough side. well separated.

Screen Name Redacted

12/14/2023 01:33 PM

While I appreciate the separation it feels better to have the water access for everyone so they can enjoy the view etc. Dogs don't need to go into the river (for the benefit of their own health) and they don't appreciate the views like others do.

Screen Name Redacted

12/14/2023 06:10 PM

I am not able to comment much due to accessibility issue with the PDF

Screen Name Redacted

12/15/2023 09:26 AM

Same reason as above, loss of space overall for both groups.

Screen Name Redacted

12/15/2023 09:40 AM

If we must change something then this is the least change for the most people. It provides a safe place for those who don't want to have dog contact and a large, beautiful play area for dogs and their owners to be free to walk around. It's not really broken as a place. Just put the one fence is and a few signs and the vast majority will be very happy. If you must, install CCTV Cameras and police poor dog ownership though penalizing/banning certain dogs but don't force every dog in Richmond into a pen just because 10 owners can't do a good job of being a dog parent. Enclosed spaces are just awful, leave it as open as possible while giving those who want to stay away from dogs an option. And leave the dog walkers with the nicer view of the river. If walkers want the river view they have it from 3rd to London Landing, the dog walkers can have it for 200 yards at the park.

PRCS - 172

Screen Name Redacted 12/15/2023 04:19 PM	Would lose trees
Screen Name Redacted 12/16/2023 06:52 PM	converse of option a
Screen Name Redacted 12/17/2023 04:28 PM	This is the best of the 3 options. In addition, there should be speed bumps on the dog path. I've had encounters with cyclists who refuse to dismount on this path. Still, this reduces the dog park size by 1/3. It's already a small dog park, and it's even being made smaller.
Screen Name Redacted 12/17/2023 10:50 PM	- Less direct route for people walking & cycling, and route is less scenic
Screen Name Redacted 12/22/2023 04:43 PM	I really like this plan, because there are fences to separate the dogs off leash from the cyclists
Screen Name Redacted 12/25/2023 04:00 PM	Total deviation from our park
Screen Name Redacted 12/26/2023 12:07 PM	I completely disagree with Option C. It takes the off-leash area and turns it into a fenced backyard.
Screen Name Redacted 12/28/2023 12:25 PM	This option is the lesser of three mediocre options. The problem with the bike paths has little to do with bikes and dogs, rather the escalation of technology that is going unregulated. As a near-daily user of this park with my dog, I watch e-bikes that can go 40+ KM/hr with a press of a button race through the park unchecked. Gravel bikes, another recent cycling evolution, allow road cyclists to ride on gravel at speeds in excess of 30 km/hr. I watch packs of 10+ cyclist ride at full speed through and around pedestrians along the dyke and other confined shared-use paths...let alone through this 400M stretch of an off leash park. This problem is not a dog/bike problem, it's a continued deference to cyclists who are driving a vehicle at speeds that are unsafe for shared-use paths while on new technology that is not being monitored. Placement of speed control measures is the simplest, and least expensive option. Actual data collection of speeds and path usage would be another option to see based on actual data, who is using this park and with what regularity.
Screen Name Redacted 12/31/2023 10:07 AM	This option provides an opportunity for the owners to walk with the dogs, and walk on the dike, with a river view.

Screen Name Redacted

1/01/2024 09:32 AM

Because dogs love water and always gravitate to that area more so than the lower area. Cyclists naturally already use the lower area exclusively. If you take a dog and spend some time at the dog park this would not even be a question. Cyclists have many options in Richmond vs dog owners. The area should be viewed as a dog park first, where cyclists happen to be able to pass through. Cyclists should slow down or dismount like they have to do in areas in Steveston and yield or be on the look out for dogs. A fence by the bike trail would help, but all your options still destroyed the area by the large tree with rope swing and tall grasses.

Screen Name Redacted

1/02/2024 10:25 AM

Too much dog space

Screen Name Redacted

1/04/2024 05:48 PM

It feels the closest to our beloved Bark park as it is now with the added safety from and for bikes. It's a wide open space that allows both walking and dog play and doesn't feel like a small, fenced-in area, which we absolutely do not enjoy. We need bigger off-leash areas like the Bark park as it is now and McDonald beach, not smaller. The smaller fenced ones are scary and overwhelming with the ratio of dogs to space.

Screen Name Redacted

1/04/2024 05:54 PM

It's closest to option A

Screen Name Redacted

1/04/2024 06:03 PM

Too close, too much access to the river for the dogs.

Screen Name Redacted

1/04/2024 06:05 PM

Most closely matches the current park/trail set up while providing some safety enhancements. Cyclists do not need another separate bike path. Keep the change to a minimum, if anything must be done

Screen Name Redacted

1/04/2024 06:11 PM

This is the most restrictive - and changes the type of park. I take my dog to fully enclosed dog parks regularly (usually at Steveston park) and it is great for exercising the dog and socializing with other dog owners. However it is no so great for the owner to get a good walk in, as it is just a fenced area. I like going to no 3 road park for a walk and to enjoy the scenery and my dog can enjoy being off leash and see other dogs at the same time. I wouldn't use the park if it changed to a fully fenced dog park.

Screen Name Redacted

1/04/2024 06:11 PM

We want to walk close to the river. We pay the taxes not the dogs

Screen Name Redacted

1/04/2024 06:11 PM

Same as number 5

Screen Name Redacted

1/04/2024 06:16 PM

This is the closest to what currently exists and my dog really likes it. People need to understand the erratic nature of an off leash dog and keep an eye out for cyclists and other walkers and share the space responsible and observe their dogs at all times to avoid negative interactions. Off leash does not mean off my responsibility.

Screen Name Redacted

1/04/2024 06:16 PM

Same as B above.

Screen Name Redacted

1/04/2024 06:21 PM

I have always thought the existing set up was okay and that the addition of a fence to separate the bikes only trail from the off leash park would be a satisfactory solution.

Screen Name Redacted

1/04/2024 06:28 PM

No separate path for pedestrians and dogs on leash.

Screen Name Redacted

1/04/2024 06:29 PM

Leashed dogs are still a hazard to cyclists on the North trail.

Screen Name Redacted

1/04/2024 06:41 PM

I like this option best! I am an avid cyclist and this has always worked for me - I even get off my bike. All dogs and their owners are different - and some don't watch their dogs or have good control of them - it would be good to suggest they be leashed in this flex zone.

Screen Name Redacted

1/04/2024 06:42 PM

I do not like that the cyclists are being directed away from what has been the main cycle path for many years. Just keep cyclists and walkers going along the dyke path.

Screen Name Redacted

1/04/2024 06:56 PM

Might work

Screen Name Redacted

1/04/2024 06:59 PM

It separates cyclists as is done now, when cyclists follow the rules. I'd like cyclists completely out of the dog park. They have lots of other places, while dog owners don't.

PRCS - 175

Screen Name Redacted

1/04/2024 07:05 PM

In this option, dogs would could continue to have a wide, long, open space to run and play. I feel that it is the second best option to my first choice (Option A). It is my second choice as I would prefer to keep my dog away from the rocks, however I would still be quite please with it.

Screen Name Redacted

1/04/2024 07:14 PM

I want to walk my dog along the dyke off leash

Screen Name Redacted

1/04/2024 07:35 PM

The view is amazing on the dyke. I think those cycling or walking would prefer to be closer to the water where it can be quieter. They can sit on the rocks or benches enjoying the view while behind them dogs can run free, play, bark, etc. If the dog park was on the south side adjacent to the water, I would be concerned about safety. Dogs may try to climb the rocks. Sandwiched between the dyke and trees, it will help insulate sound. I'd suggest maybe some small trees to be planted along the fence of the dyke too.

Screen Name Redacted

1/04/2024 07:44 PM

Placing cyclists/pedestrians deeper into the park without any buffer.

Screen Name Redacted

1/04/2024 07:43 PM

further away from the water

Screen Name Redacted

1/04/2024 07:56 PM

Similar to option a but allows the dogs to have access to the water. Could be better if it's extended and larger area

Screen Name Redacted

1/04/2024 08:10 PM

Too much space is given to the off-leash area leading to greater congestion on the multi-use pathway.

Screen Name Redacted

1/04/2024 08:21 PM

Enjoyable views while walking along the raised trail.

Screen Name Redacted

1/04/2024 08:56 PM

Dogs have more room to run

Screen Name Redacted

1/04/2024 08:47 PM

More space for my dog to run where she is abused to and prefers. Keeps her away from the ditch or on that side

Screen Name Redacted

1/04/2024 08:49 PM

At lease the dog park area is still long and wide enough.

PRCS - 176

Screen Name Redacted

1/04/2024 08:54 PM

Seems bikes and pedestrians would enjoy views of river more on upper path. Just seems awkward moving pedestrians and bikes from main dyke walkway. Also takes away some running room

Screen Name Redacted

1/04/2024 09:06 PM

Would enable me to walk along the water, with my dog off-leash as I currently do...without fear that he will run over to the north trail and bother people who are not as social (ie; walking with a dog on-leash with no interest in having their dog socializing. this option gives the best of both worlds, in my opinion

Screen Name Redacted

1/04/2024 09:29 PM

This is not much different than what is there ... not worth all the money to keep it the same .

Screen Name Redacted

1/04/2024 10:17 PM

Currently where most of the off leash and cycling happens. Dogs and their owners use the south path more frequently and cyclist use the northern route.

Screen Name Redacted

1/04/2024 10:20 PM

Too restrictive for people. Dogs get the view of the river, which is better suited for people.

Screen Name Redacted

1/04/2024 11:59 PM

The pathing for MUP is awkward; dogs can easily run around the bollards onto the MUP.

Screen Name Redacted

1/05/2024 06:30 AM

Acceptable . Major concern is division of cyclists and dogs

Screen Name Redacted

1/05/2024 07:03 AM

I have been on my bike many, many times in the park and have never experienced ANY issues. I ride my bike along the pathway that is further away from water and dogs are roaming but again have never been a problem. The area is wide open and well marked so that people on bikes are aware of the dogs. If it isn't broken don't fix it.

Screen Name Redacted

1/05/2024 07:47 AM

I hate to think of tree removal and disturbing nature

Screen Name Redacted

1/05/2024 08:14 AM

Separates cyclists but doesn't allow them on dike trail. Off leash dogs on dike trail will still pose a problem for pedestrians if they're not under control.

PRCS - 177

Screen Name Redacted

1/05/2024 08:58 AM

separation of bikes is important

Screen Name Redacted

1/05/2024 10:07 AM

same as above

Screen Name Redacted

1/05/2024 10:11 AM

Does not separate cyclists and pedestrians.

Screen Name Redacted

1/05/2024 10:45 AM

See Option A above.

Screen Name Redacted

1/05/2024 11:44 AM

Essentially this option prevents access to the dyke trail for non-dog owners which seems counter to the rest of the dykes within Richmond.

Screen Name Redacted

1/05/2024 12:07 PM

As C

Screen Name Redacted

1/06/2024 04:16 PM

It doesn't have the same amount of open space, but at least it would give dogs who like water access to it

Screen Name Redacted

1/05/2024 12:45 PM

As a cyclist, I would like to stay along the raised part of the dyke to view the river better. If dog owners would also like to take in this view, they can do so with leashed dogs.

Screen Name Redacted

1/05/2024 01:26 PM

It is the best of the three options. The dogs have the most use of green space, dog walkers can still walk on the top path with views of the river and it separates the dogs and the bikes

Screen Name Redacted

1/05/2024 01:50 PM

If plenty of dollars and trees are at stake, I'll pass.

Screen Name Redacted

1/05/2024 02:29 PM

Off leash area is well separated from cycle path.

Screen Name Redacted

1/05/2024 02:55 PM

Combining an off leash park and cyclists creates a safety hazard. There are no known best practices that support putting a cycling path in an off leash dog park. Dogs have a mental maturity of a toddler. No city planner would contemplate putting a bike path through a

PRCS - 178

children's playground. Bark Park is an off leash dog park and all structural designs should be grounded in creating a safe environment for all users: dogs and people.

Screen Name Redacted

1/05/2024 03:18 PM

This is the least attractive solution. Majority of dyke users will be walkers and cyclists, and having those users pushed far back into the park is not the best use of the area. I could see this could possibly be a very efficient use of the available land, but sometimes ethetics is better than efficiency. If you need a reminder, just look at the "West Side Off-Leash Dog Area" on the north side of the Queensborough Bridge. It is an efficient use of an odd piece of land, but I've never seen a dog, or dog-owner there for the times I've driven, cycled, or walked past that park.

Screen Name Redacted

1/05/2024 08:32 PM

Flow of movement is awkward

Screen Name Redacted

1/05/2024 09:37 PM

Clearer rationale for cyclists to just go straight through from the parking lot

Screen Name Redacted

1/06/2024 11:38 AM

Off leash dogs do not need the dyke path view and ambience, others do benefit from it without being concerned about out of control dogs.

Screen Name Redacted

1/06/2024 12:01 PM

There are dogs that are water obsessed and having the fence not blocking the water can be dangerous for some animals.

Screen Name Redacted

1/06/2024 12:10 PM

Next best to option A.

Screen Name Redacted

1/06/2024 03:08 PM

Bikers should be on bottom path or not allowed in park to begin with

Screen Name Redacted

1/06/2024 07:49 PM

Not a bad option but I think the path outlined in option A is better.

Screen Name Redacted

1/06/2024 07:57 PM

It is selfish to exclude everyone but dog owners from the dike trail.

Screen Name Redacted

1/06/2024 08:04 PM

As noted, this option most closely matches the current arrangement. Truly, if people simply followed the guidelines as they are now, there would not be many problems. Problems occur when cyclists ride too

PRCS - 179

swiftly / do not follow the posted guidelines. Perhaps the suggested bollards would force cyclists to dismount for the length of the Bark Park. Or a gate which would require stopping and dismounting. Cyclists often come through at full speed - then are angered if they encounter dogs. Most dogs owners are watchful as we are concerned for our dogs' safety. It might be wisest to simply re-route cyclists around the Bark Park entirely. Perhaps what the city did for the cyclists when the Bark Park was under construction could be retained. There seem to be plenty of other cycling options in Richmond. This park is joy and a haven for folks with dogs. I walk there regularly and it is a gift to so many. Owners can enjoy the beauty of a dyke / river walk with their dogs off leash. People have formed friendships, dogs happily socialize, and there is real goodness here. Please do not take this away by making yet another pen style off leash area or restricting the river path. There are so many places for cyclists in this city. There only small off leash spaces for dogs, and only this one which is by the water for off leash walking with your dog.

Screen Name Redacted
1/06/2024 09:10 PM

walking and cycling adjacent to the water should be a priority. Why would you give it to the dogs ?

Screen Name Redacted
1/07/2024 08:01 AM

It is clear where the cyclists should go and hopefully it will lessens the various conflicts that occur between cyclists, dogs and dog owners.

Screen Name Redacted
1/07/2024 10:50 AM

flexible option but wasted space and I fear cyclists will still go where they want to.

Screen Name Redacted
1/07/2024 04:12 PM

Does not offer a fenced area to keep dogs from accessing the water.

Screen Name Redacted
1/07/2024 04:14 PM

I don't think much will be gained under this option and don't agree with removing more trees.

Screen Name Redacted
1/07/2024 08:21 PM

Provided more space for both dog and owner. Safer area for cyclists

Screen Name Redacted
1/07/2024 09:04 PM

As a cyclist, I do not appreciate being relegated to an area away from the river. We have just as much right to enjoy the river as any other park user.

Optional question (220 response(s), 36 skipped) **PRCS - 180**

Question type: Essay Question

Q8 I have the following additional comments about the No. 3 Road Bark Park and/or adjacent dike trail:

Screen Name Redacted

11/29/2023 11:06 AM

if the MUP or bike path in the middle, can enhancements be made to the green space on the north side of the trail?

Screen Name Redacted

11/28/2023 10:44 AM

It doesn't seem fair that because of the conduct of cyclists that the design of this park for off leash dog people is in jeopardy. Cyclists can also take the road to commute over. The speed at which electric bikes especially go through this park is what has caused this conflict. Electric bikes are more like vehicles. They should definitely be on the road.

Screen Name Redacted

11/28/2023 11:28 AM

Paved road for the multi-use path is preferred for the safety of runners and cyclists as gravel is not friendly for walking, running, or cycling.

Screen Name Redacted

11/28/2023 03:34 PM

Richmond needs to increase the number of dog parks in general as more people choose to get dogs over children. This is arguably the best dog park in Richmond after Pirates Cove, and these changes would drastically alter the usability of this park and just make it another small fenced area that may not be suitable for all dogs. Having a fenced play area is not the only way of having a dog park. Trails and open areas that can function as 'destination' parks (aka, parks that people like so much that they are willing to travel across the city to), are a type of park that the city lacks in.

Screen Name Redacted

11/28/2023 05:58 PM

The cyclists have all the roads in the city and the trail along Dyke Rd leading up to the Bark Park. How come they can't be diverted up No. 3 Rd.? I understand that the few cyclists who are the problem have created an unsafe situation. 80-90% of the cyclists aren't the issue. But even with the 3 Options presented it doesn't eliminate the unsafe situation for people walking in the multi use trails where people and on leash dogs are... how do you keep those cyclists to under 15kms/hr.?

Screen Name Redacted

11/28/2023 06:37 PM

Why can't cyclists and dog owners coexist in the same place? Bicycles have a very breakthrough tech called "brakes". All we need to do is allow cyclists with reasonable speed. In areas where dogs

are not allowed off-leash, kids are still allowed and cyclists need to be attentive and ready to react in case a child appears running out of nowhere. So why can they also react the same way with dogs?

Screen Name Redacted

11/28/2023 06:34 PM

A lot of dog owners cannot control their dogs appropriately and dogs frequently come running at cyclists barking and threatening riders. That is not acceptable. Dogs need to be on the leash or completely fenced off when off leash!!

Screen Name Redacted

11/28/2023 06:34 PM

Posting speed limits for cyclist is a good idea, and making sure that the signs are frequent and obvious on the upper path

Screen Name Redacted

11/28/2023 06:38 PM

Better solutions have been proposed and quickly rejected by the parks department. The city of Richmond seems completely focused on cycling at the expense of other interest groups.

Screen Name Redacted

11/28/2023 06:44 PM

1. None of this matters if you're not going to enforce the rules. If you don't enforce the cyclists will still use the dike trail, as they do now. No amount of rules, regulations or signage on their own will change that. 2. Can we please dispense with the term "multi use path"? They are NOT multi use. Cyclists rarely use them, often for obvious reasons. Again, there is an enforcement issue here. 3. When the dike was raised the waste receptacles on the dike trail were removed and relocated to the lower trail. If you put a couple back on the dike trail it might encourage more dog owners to pick up. At the moment some don't because the receptacles are in inconvenient locations.

Screen Name Redacted

11/28/2023 06:36 PM

They need to fix the walking area because my dogs HATE the rocky ground. Needs more grass!!!

Screen Name Redacted

11/28/2023 06:38 PM

Please make it safe and usable for all

Screen Name Redacted

11/28/2023 06:54 PM

There are more important things than to spend money on dogs. We don't even have a highway that goes through Richmond. We have a skytrain that causes more traffic on three road and services next to no one. At least, if you would've taken out where the train track would pass through River Green, which is actual population, I could use it. And from there have service that goes straight to Steveston by means of a bus. Not a 12 Dekker accordion bus that runs back-and-forth completely empty And parks 30 km away overnight. You do things that make no sense. Like for bike lanes on Railway. Anybody not

familiar with the area might make the mistake of driving into a cyclist. Why four bike lanes on one street? At least have the cyclist go between the sidewalk and the parked cars not in the street. If you want to spend money, do something that's useful and will benefit people first. Why not free bus in Richmond isn't that better? Why not build an overpass in front of three Road Mall taking people from the sky train to the food court freeing up the street for the cars and avoiding any accidents with pedestrians. Isn't that more useful? Same thing on three and Westminster. That will serve a lot more people. Even though I might not be one of them. But this I can understand. How about free parking a new parking lot for Richmond Hospital.? Or arrange for free parking in Richmond centre and the shuttle bus that takes people for free to and from the hospital to Richmond center. Is that not More useful than a place for the dogs to run around?

Screen Name Redacted

11/28/2023 06:43 PM

I think that regardless of what the final configurations are there will be certain dog owners who will do whatever they want and too bad for anyone else. I think this is a bit of an issue all over Richmond.

Screen Name Redacted

11/28/2023 07:01 PM

I thoroughly enjoy walking in this park and love the water views. The speed of the bikes is more often than not excessive and dangerous for pedestrians with or without dogs. Improved signage for yield to pedestrians would be helpful.

Screen Name Redacted

11/28/2023 07:11 PM

Having a large fenced off area for dogs is good A separate fenced off area for smaller dogs needed

Screen Name Redacted

11/28/2023 07:37 PM

Unclear what problem you are trying to solve. Dog owners also have a responsibility to control their dogs off lease which many don't. Main use should be the paths for pedestrians and cyclists. Why not just put a fence on the south side of the lower path and leave the rest the same. The dog people lose a very small portion and the bikes are kept on the appropriate path and pedestrians have use of both paths

Screen Name Redacted

11/28/2023 07:40 PM

It's wonderful that we have this recreational opportunity and that it's provided by the city.thanks again.

Screen Name Redacted

11/28/2023 07:43 PM

Who is complaining about this site - a few cyclists who race through the zone, a few walkers who do not like dogs or a few dog owners who are misguided by others?

Screen Name Redacted

11/28/2023 07:58 PM

No matter which solution, please complete the fencing on the north side.

Screen Name Redacted

11/28/2023 08:12 PM

Great park as is. Please leave it alone!

Screen Name Redacted

11/28/2023 08:15 PM

As a runner, I've been injured by large off leash dogs so I think they should be restricted to a fenced in area

Screen Name Redacted

11/28/2023 08:27 PM

Bikes are the problem and it is the dog park users that would suffer in each of the 3 scenarios. Walk your bike for the short distance through the dog park. The majority of bikers ride fast(supposed to be walking speed I believe). Also e scooters should not be allowed on any walking path. They are the worst!

Screen Name Redacted

11/28/2023 08:34 PM

City of Richmond should take English Bay sea wall as an example to manage the dog owners about the usage of public area especially parks in the city.

Screen Name Redacted

11/28/2023 08:51 PM

I use that park from time to time (both before current configuration and prior) and personally have not had any issues with other pedestrians, dogs and their owners, and other cyclists. I do understand some folks have expressed concerns and therefore I provide my thoughts based on the 3 options presented.

Screen Name Redacted

11/28/2023 09:55 PM

Dissappointing to see incorrect information on the boards. There are no current on-leash areas at Bark Park as indicated on the inventory board. Safety should be the top priority and it seems like there are just excuses. A designated and physically segregated path along the north side should have gone in when the park went through all its upgrades initially. Cost and confusion seem to be the excuses for not doing a better job. Bark Park needs to be safe for all park users. The safety of all park users should be priority and the lack of segregation has caused division in the community between cyclists and dog owners. The City should foster community harmony rather than creating problems. Bark Park is a park, an off-leash dog park.

Screen Name Redacted

11/28/2023 10:07 PM

Currently, there are too many bikes and dogs in the same area. I don't feel safe to let my dog play in the area.

Screen Name Redacted

I really like how Bark Park which allow me and my dog to have leisure

11/28/2023 10:48 PM

walk, even we keep walking in loops. It feels like we walk together in park and say hi to the friends we met. All Richmond park are on leash except this bark park and one somewhere in Bridgeport I think. I really hope, it can have minimal change and I can still enjoy walking waterside with my dog off leash.

Screen Name Redacted

11/28/2023 10:48 PM

This dog park is fantastic, however I have spoken to quite a few other dog owners that are also nervous about having the shoreline so accessible. The area for the medium/large dogs really needs to be kept as expansive as possible, as all other dog parks (with the exception of the Oval) do not provide enough room for the dogs to really run around as much as they (we) would like.

Screen Name Redacted

11/29/2023 02:32 AM

I use this bike trail to help me get from Hamilton to Steveston and then back. Part of an around Richmond scenic trail.

Screen Name Redacted

11/29/2023 05:58 AM

Dogs shouldn't have all of the park - it's not right - give them 1/2 - people should be able to walk in peace - dog park should be between the two path ways so those that just want to walk can get some peace

Screen Name Redacted

11/29/2023 06:43 AM

My dogs have been hit twice by bikers while in the off-leash area and almost hit again another two times by bikers just racing through the area and around turns. Most bikers are great, like the dogs, give warning they are behind me so I can call the dogs to make sure nothing happens. It's my belief if I was there was my four year old grandson, who I am assuming wouldn't be put behind a fence in any of these 3 options, he could also have been hit by these reckless cyclists as he runs around and plays.

Screen Name Redacted

11/29/2023 06:45 AM

Speed bumps. The issue isn't the dogs - it's the e-scooters and cyclists that speed through the leisure trails in Richmond as if they're roadways. You need to put up speed reducers on the trails. They are NOT going 15km/h. They are dangerous. Also, other issues are people riding with their dogs next to them that take up the whole trail and push you off of it.

Screen Name Redacted

11/29/2023 08:43 AM

Too many trees / too many things in the way. Dog agility structure look good, but no one could work on training in a open dog park. Is the park for people or dogs?

Screen Name Redacted

Unfortunately over the 18 years I took my dogs to this park, there

11/29/2023 09:15 AM

over always been conflicts with cyclists. I appreciate your efforts to finally resolve the problem.

Screen Name Redacted

11/29/2023 10:04 AM

There should formally be no cyclists allowed at all. Why so extreme? Informally, cyclists can and may pass through. But they should recognize it is a dog park. Riding slowly and being friendly basically. I have ridden dirt/dual sports motorbikes in grey zone areas, so I always go slow, give way and touch right all the time when I see dogs or people.

Screen Name Redacted

11/29/2023 10:07 AM

I don't have a dog but I see a need for a bigger dog off leash area so dog owners can go. If it is not provided, more dog owners will ignore the dog on leash rule in public parks

Screen Name Redacted

11/29/2023 10:26 AM

The design doesn't need to be linear, because I'd like to see dogs would have some water access. The path / multi-use trail / dog-off lease may intersect at one point. I'm not a designer, and not sure how to make the intersection works best; I guess the professionals can do that

Screen Name Redacted

11/29/2023 11:10 AM

there is too much danger of being chased and bitten by dogs right now. we need this as a dog park, but with cyclists too.

Screen Name Redacted

11/29/2023 11:14 AM

as a cyclist, I do sometimes feel hostility from dog owners in the park and I am concerned about the safety for dogs and myself (having to avoid collisions)

Screen Name Redacted

11/29/2023 11:21 AM

suggest hybrid option: riverfront trail for pedestrians and on-leash dogs only. existing north trail for cyclists only. middle area / green space fenced for off-leash dogs. no on-leash dogs in area north of the existing north trail

Screen Name Redacted

11/29/2023 11:36 AM

I was not aware that the north path is leash-on. Most activity and belief I've seen is that the entire park is leash-off. The footpath around Crown packaging is too narrow for wheeled traffic and foot traffic. I believe bikes should be rerouted around crown on Finn Road or widen that section of the path..

Screen Name Redacted

11/29/2023 12:19 PM

The current situation is not too bad. As a cyclist, I have never encountered any problems with dog owners and their off-lease dogs.

Nevertheless, option A would be an improvement to the existing set up whilst options B and C would be downgrades

Screen Name Redacted

11/29/2023 03:27 PM

For many years I have used Bark Park to walk my dogs. During those years I have seen numerous accidents between bikes and dogs. Dogs do not understand the danger that bikes can be to them, and the bikes go way to fast through the park. Also some dogs like to chase bikes and can cause accidents as well.

Screen Name Redacted

11/29/2023 03:43 PM

Ultimately combining bikes and an off leash dog area is a horrible idea. It is not safe for either participant and ultimately the safest solution is to reroute the bikes. If that is not going to happen and you insist on this being a shared space then the fencing must go further around the dog areas to prevent them from chasing the bikes.

Screen Name Redacted

11/29/2023 04:52 PM

none

Screen Name Redacted

11/29/2023 05:06 PM

The current situation is challenging, and there have been issues with everyone involved (poor dog owners and unsafe cyclists) As someone who has done more walking along the on leash areas, I would say there are more considerations for safety from a pedestrian point of view as you head east on the trail towards 2 rd but that is for another survey! I strongly feel that the dog off leash area should remain largely as it is, with safe guards put in as in option C. I have heard some arguments that the walkers and cyclists should have the waterfront access, but there is a large amount of waterfront to walk along the further west you go, for the short distance that is the dog park area, allow the dogs to have access (I know the build up of the dike has changed it somewhat, but dogs find a way!)

Screen Name Redacted

11/29/2023 05:15 PM

My concern with any of the options is the enforcement. I can see people allowing their dogs off leash in on leash areas. Education and enforcement will be needed after a change.

Screen Name Redacted

11/29/2023 05:52 PM

Need a year-round water fountain for dogs and joggers that does not get shut off during winter

Screen Name Redacted

11/29/2023 05:35 PM

Nothing at this time.

Screen Name Redacted

11/30/2023 06:47 AM

Please , please make the dog off leased area totally fenced in with one for small dogs and one for larger dogs . Off leashed areas for dogs only will not work if not fenced and there are pedestrians and bikers around. We all know there are entitled irresponsible dog owners, bikers who will disregard signs etc and simply go where they want to go and there will be altercations , accidents etc just like we have seen or heard. Do not waste tax payers \$\$\$\$ redoing this dog park if nothing changes too much. Always thought this touted Dog Park was a complete waste of \$\$\$ and found it useless.... the grass area needed seeding, roped off , etc.... we never used it as we did not trust other dogs , other dog owners around etc. Build the dog park off leash area like the one at Aberdeen - with some grass and also some dog friendly stones etc. Aberdeen, South Arm, Steveston are well thought out off leash dog parks - kudos... keep these coming. Thank you.

Screen Name Redacted

11/29/2023 07:46 PM

Since it is in an isolated nonresidential area, it always seems like a freeforall. Most people drive there from other areas so don't know the people or their dogs. Steveston park is the same local residents and dogs who are generally there. Everybody knows everybody.

Screen Name Redacted

11/29/2023 10:03 PM

The idea of cyclists zooming through an off leash dog area doesn't work. Even past the bark park, to the east, cyclists come zooming through. They should have to disembark. Perhaps some better bike friendly trails can be setup on the roads.

Screen Name Redacted

11/30/2023 12:01 AM

This survey does not address the narrow paths to the east of the site all the way to 4 road. That is the area where walker and cyclists are forced into a single track. This is where the congestion occurs. I find the signs telling walked/dog to stay on the left and cyclist on the right confusing as we all head both east and west. I find the north american practice of walking on the right and passing on the left to be the most efficient whether walking or cycling. Safety is enhance by the use of a courteous "on your left" warning when passing or use of a bell.

Screen Name Redacted

11/30/2023 07:18 AM

My feeling right now is the park is fine as it is.

Screen Name Redacted

11/30/2023 12:30 PM

Should only be dogs allowed. Not a shared path

Screen Name Redacted

11/30/2023 01:52 PM

I think it would be wise to simply re-route the cyclists away/around the bark park. **PRCS - 188** ~~PRCS - 188~~ did for the cyclists when the bark park

was under construction should be what they switch the cyclists to. Dogs and bikes do not mix, even kind and slower cyclists are frustrated and in danger with dogs running around. Even worse with dogs on leash. There are so many places for cyclists in this city. There are 2 or 3 small spaces for dog owners, only one of which can actually be used for exercise/walking by dog owners to get out and enjoy richmond and its scenery as well. At the least, you should put bollards in that would force cyclists to dismount for the length of the bark park. So many cyclists come through here at full speed or even on electric bikes, ive even seen a damn motorcycle trying to alowly walk/ride ita way through. I have seen dogs get hit, very nearly hit and cyclists upset and yelling at dog owners for "not controlling their dogs" while this is the only off leash option for dogs to truly run around and get good exercise in without running in a small circle/playing fetch. Frustrating for everyone involved with cyclists being permitted to go through and a good number of "serious" (aka high speed and often quite rude/dismissive of any comment/concern of their speed/not dismounting around the dogs) rarely following the rules, which ruins it for cyclists, pedestrians and dog owners alike. There are also quite a few thistle bushes in the grass around the bark park that get stuck in dogs ears, paws etc. It would be great if those could be removed as they are dangerous to dogs and children alike.

Screen Name Redacted

11/30/2023 02:03 PM

Cyclists have many more areas all around Richmond where they can ride; dog owners have limited spaces to take their dogs off-leash. This space should be prioritized for dogs and dog owners. Cyclists in the area around Bark Park and elsewhere in Richmond tend to demonstrate an inconsiderate and entitled attitude toward their use of roads and public spaces (we've all seen the swarms of spandex-laden cyclist "gangs" not making space for motorists and pedestrians and ignoring stop signs in Richmond and particularly around Steveston and along the dyke road). Either they need to change their behaviour or the City must find ways of keeping them away from densely used public areas.

Screen Name Redacted

11/30/2023 04:00 PM

Add cycling lanes along the roads leading to the Bark Park (Dyke Rd and No. 3 Rd) and make sure they actually end at another bike lane to make a more connected cycling network.

Screen Name Redacted

11/30/2023 07:00 PM

I think that the park should remain as it is but cyclists should be required to walk their bikes on the trails in the off-leash area. This would allow everyone to use the park as intended but prevent any conflicts between cyclists and dogs. I love bark park and walking my dog off-leash on both paths but I fear for her safety from bikes speeding by. If they had to walk their bikes, all problems would be

avoided.

Screen Name Redacted

11/30/2023 11:22 PM

Please do not change the dog park. It is the only place where dogs can behave and interact in a normal and appropriate manner while getting sufficient exercise. The cyclists could easily use number 3 road to connect across on Finn Road or make use of the new MUP being constructed on Steveston Highway

Screen Name Redacted

12/01/2023 09:46 AM

I have ridden it many times on my bike and on a majority of occasions I am either charged by a dog or had them nip at me. Bikes and loose dogs do not mix besides owners using off leashes stand around and talk and have little idea of even where there dog is, and even less control of them when their dog is interacting with other dogs

Screen Name Redacted

12/01/2023 10:06 AM

This is a singular park and the dog owners should be grateful for this facility. Staff have worked VERY hard to meet the needs of the dog owners and have been very responsive to their requests. My hope is that the few very vocal individuals in the dog park community permit others to voice their opinions themselves and constructively contribute to this public consultation process. I would also add, in reference to board #7, bollards are a good option but as I heard others comment at the open house, I think a gate or chicane (similar to what Metro Van Parks have for ecologically sensitive trails in Pacific Spirit Park) are more effective than bollards to prevent bikes from travelling along the upper dike path. That said, if they're determined to go along the river, they will be bypassing along the rip rap.

Screen Name Redacted

12/01/2023 12:31 PM

"Existing Site Zones and Inventory" is inaccurate by indicating both paths are "Dogs On-Leash". This is misleading to those people doing this survey as it can influence their thinking regarding what is needed versus what is now permitted (which is not factual). It really discredits the rest of the survey and obvious time and effort that went into putting this together. This survey appears to be less about getting input from park users and more about getting feedback on pre-decided options. Isn't the whole intent on getting feedback to inform the development of options? Some might see this as a manipulative attempt to discredit or avoid options city staff don't like.

Screen Name Redacted

12/01/2023 03:14 PM

Biker education to slow down and note that dogs have priority to be there... per signage!

Screen Name Redacted

12/01/2023 04:08 PM

This park has not worked since the dyke upgrade. I was a frequent user before that time.

Screen Name Redacted

12/01/2023 06:42 PM

Instead of spending all that money on fencing, we should have a fence that necessitates bikers to get off their bikes at both entrances to the park. A sign should tell bikers that they are entering a dog park and must walk their bikes or bike at "walking speed" because dogs are off leash in the area. I would also like to continue to be able to walk with my dog off leash at the place at the north - east end of the park where you can walk along a trail and then meet up with the main trail.

Screen Name Redacted

12/01/2023 07:30 PM

No. 3 Road Bark Park is one of only a few areas in Richmond where owners can walk with their dogs off-leash. In contrast pedestrians and cyclists have an almost unlimited number of trails, roads, paths and beaches to use and enjoy. Small off leash dog parks work well for small dogs, who can play while their owners sit or stand...but they do not meet the needs of many dogs and owners.

Screen Name Redacted

12/02/2023 12:47 PM

Can a fenced path for the cyclists be created on the north side of the tree line? This would allow for a loop walk with the dog and keep the dog park as originally intended. I would also suggest more than bollards at the entry points as there can still be a high possibility of collision. In other words it would be good if the dog park was better fenced. I know this is hard with the rocks and river but I think it would help for the safety of all.

Screen Name Redacted

12/02/2023 06:35 PM

I think the simplest solution is to ban bikes from this park. However, I realize that the bike lobby has a lot of sway with City Council. The park would be fine as is if there were clearer signage (i.e. simpler more graphic signage -- cyclists do not slow down to read the signs) and some measures to slow cyclists down (bollards? speed bumps? loose gravel on the path?)

Screen Name Redacted

12/03/2023 07:18 AM

Can get very wet. Need to make it easy to maintain and access.

Screen Name Redacted

12/03/2023 09:17 AM

I do like cycling through this area to have the river experience than needing to route around on the roads

Screen Name Redacted

12/03/2023 02:32 PM

I really like the fencing options. I live near an off leash area adjacent to the Railway Greenway near Westminster Highway and it is just a

PRCS - 191

chainlink fence and is really ugly and feels like a prison. Having the wooden fencing with the mesh makes so much sense and is so much more aesthetically pleasing. Signage, again I would really be explicit about where leashed dogs are allowed just to squash any potential conflict before it can happen. I'd also love to see the space activated for dogs, maybe some water features that can be on in the summer, and lots of logs, maybe some sand to dig in, I'm not sure what best practices are but would love to see something more than just a fenced area with nothing in it. Maybe even some agility features. This is a park that people really have to go to intentionally, so let's make it really worth going to.

Screen Name Redacted

12/03/2023 03:30 PM

As a frequent user of the trail, I think it's an excellent idea to have a fenced in area for the dogs

Screen Name Redacted

12/03/2023 07:09 PM

Provide clear signages for all users when the trail is shared and for multi-use.

Screen Name Redacted

12/04/2023 11:42 AM

I am glad that the city is taking a thoughtful view. Option B seems best

Screen Name Redacted

12/04/2023 02:03 PM

Thank you for this opportunity to contribute. I am a recreational cyclist and a frequent user of this route. Anecdotally I have been "attacked" 3 times by dogs travelling through this park and am extremely uncomfortable cycling around unleashed dogs that are not trained to recall. I have no problem sharing a multi use path and am conscientious about slowing down but cannot trust that off leash dogs will not chase or attack me. Please separate us by fencing the multi use path and encourage dog owners to respect the on leash areas.

Screen Name Redacted

12/04/2023 02:08 PM

Thank you for allowing us feedback on this topic. It was nice to meet & greet last Saturday. (& the leftover donuts) We ride all over the GVRD on the dykes & this area is the most problematic with large groups of dog walkers using 'all' of the facilities. We just want a through-fare to safely ride to our destination not having to navigate with free range uncontrolled dogs. We like dogs, just not if we want to stop for lunch with hungry eyes watching. The fencing would be the best option to resolve this issue. I'm a big fan of info signage & reminders of code of conduct is invaluable here. T.Y. Good job City of Richmond planners.

Screen Name Redacted

I feel that the trail is wide enough to accommodate cyclists and

PRCS - 192

12/04/2023 03:20 PM

dogs, only the adjacent dike trail and the further down trail are problems. In one incident 2 friends and me walking 2 dogs, while another dog owner approaching plus a cyclist at the same time on the narrow path, the other dog running into my friend and causing a nerve injury. I usually have my dog sit and stay when I see a cyclist but some cyclists are too fast for me to provide command to my dog.

Screen Name Redacted

12/05/2023 10:44 AM

I understand that the cyclist have the same rights as walkers or dog owners and as I have mentioned this has not been an issue in the past but now there seems to be an entitled few that have loud voices that want things changed.

Screen Name Redacted

12/05/2023 10:52 AM

I do not believe any changes are necessary. I have spent countless hours at the park and believe that the issue between cyclists and dog owners is largely non-existent. Whenever conflict does arise, it's usually a friendly conversation.

Screen Name Redacted

12/05/2023 03:09 PM

I have been attending this OFF LEASH park over 22 years with our various retrievers and at times cyclists & dogs/dog walkers had issues. Now that this off leash park has a name its become easier to complain. The improvements here are great, from rivers edge to the fenced ditch farmers field side and the full length. The signage now in place is clear and explicit. Unfortunately one encounters very unpleasant, self centered cyclists on all of the dyke trails, Terra Nova & West Dyke...Fencing parts of this park appears to be the goal, if that does materialize, should be the low level path, farm field side and make that path more narrow!!!!

Screen Name Redacted

12/06/2023 09:38 AM

Ideal option would be Option A with a small dog enclosure. Option C should be tossed out as takes away waterfront access for all community members.

Screen Name Redacted

12/07/2023 12:08 AM

Thank you for providing three options that maintain access to this area for people walking, cycling, rolling - with and without a dog.

Screen Name Redacted

12/13/2023 02:49 PM

Designated barrier by the fence and make it very clear to everyone

Screen Name Redacted

12/07/2023 05:45 PM

I have been a cyclist and now am a dog walker. I think there is lots of dyke for cyclists to ride on. Less so easy walking for dog. I had and elderly dog previously who hated the loose gravel on the walkways. I think cyclists should only access the #3rd dog park, and Finn slough

PRCS - 193

dog park dismantled. OR they have the option to do the road route :
Finn Rd. , to # 3 Rd.

Screen Name Redacted

12/07/2023 10:23 PM

I truly feel that the small dyke/river access along Bark Park should be solely an off leash dog park only and all bikes and wheeled devices should be rerouted around this very short piece of river front so that everyone is safe. The wheeled devices and the bikes choose to go at speeds that are well beyond safe levels for the people and dogs that use this park. There was so much money spent to make this unique very dog friendly site that the misuse by the bikes and wheeled devices seems to be intrusive and unnecessary when they can easily be rerouted around the park.

Screen Name Redacted

12/08/2023 03:58 PM

this is key passage and trail for all, can't just be favoured to dogs - dogs/owners must respect the rules and control their dogs

Screen Name Redacted

12/08/2023 06:48 PM

I no longer go to that park with my dogs BECAUSE of the cyclists who ride through that area like entitled maniacs. It is the most dangerous and terrible design or idea I've ever seen. Any of those options are better than it is now. For the safety of the dogs, please put up any manner of fencing and signage. Thank you so much for giving people the opportunity to provide feedback.

Screen Name Redacted

12/08/2023 08:31 PM

Regardless of design, some measure of traffic calming for all users is required. The landscaping also seems to have severely degraded from the old park. The flora is quite rough and doesn't offer a lot of actual usage of the ground for dogs

Screen Name Redacted

12/08/2023 08:54 PM

The park as is, is currently not safe for park users and dogs

Screen Name Redacted

12/12/2023 09:11 AM

The dike trail needs to urgently continue and link up with River Road at Finn Slough

Screen Name Redacted

12/13/2023 02:01 PM

This area definitely needs something done. I have had conflicts with uncontrolled dogs when cycling.

Screen Name Redacted

12/13/2023 02:52 PM

Add bark chips to the upper trail to discourage bikes

Screen Name Redacted I have an accessible vehicle. can the potholes be fixed in the parking lot.
12/13/2023 02:55 PM

Screen Name Redacted need short fencing around the parking lot need permanent canopy for extreme weather (rain/snow/heat)
12/13/2023 02:58 PM

Screen Name Redacted no fenced areas. too limiting
12/14/2023 12:02 PM

Screen Name Redacted I like more option of space for my dogs
12/14/2023 12:04 PM

Screen Name Redacted my option is bike lane beside the fence
12/14/2023 12:07 PM

Screen Name Redacted do nothing. keep as it. if you make changes you will drive everyone to the far Garden City section where there is no parking and the cyclists are still rolling through. cyclists have access to everywhere in richmond, move them. **you don't need to react to all complaints**
12/14/2023 12:11 PM

Screen Name Redacted redirect cyclists to Finn Road - they have lots of the dyke area to cycle where dogs are not allowed off-leash. have been using this park for 13+ years and it's good as it is.
12/14/2023 12:14 PM

Screen Name Redacted LEAVE IT ALONE
12/14/2023 12:15 PM

Screen Name Redacted wouldn't cyclists appreciate riding fast on Finn Slough and Finn Dr? those roads are hardly used especially on weekdays
12/14/2023 12:20 PM

Screen Name Redacted thanks for hosting this open house and listening to dog owners
12/14/2023 12:22 PM

Screen Name Redacted consider re-routing bikes
12/14/2023 12:29 PM

Screen Name Redacted the bikes need to be rerouted
12/14/2023 12:40 PM

Screen Name Redacted **PRCS - 195**
leave it alone. you got it right the first time

12/14/2023 12:46 PM

Screen Name Redacted

leave it alone or bike land down Finn Road

12/14/2023 12:48 PM

Screen Name Redacted

bikes need to be totally separated. dogs off-leash totally fenced, pet & dogs on leash only on the waterfront trail. if eating lunch on the park bench, you don't need dogs begging for food.

12/14/2023 12:54 PM

Screen Name Redacted

how about a children's/family fenced off bike/dyke no. 3 road feature pump track without big dust mess and skateboard area

12/14/2023 12:57 PM

Screen Name Redacted

for years speeding bicycle have been a problem but now the addition of motorized transportation has made it significantly worse. mechanized should be limited to folks with mobility issues. they (e-bikes/e-scooters) are too fast.

12/14/2023 01:00 PM

Screen Name Redacted

Thanks for looking at this - any of the improvements will be welcomed by me.

12/14/2023 01:33 PM

Screen Name Redacted

As someone with sight loss, I would like more opportunities to enjoy trails/park, so if accessible wayfinding could be considered, it would be wonderful.

12/14/2023 06:10 PM

Screen Name Redacted

seems to be working okay so far, I didn't have many complaints about it.

12/15/2023 09:26 AM

Screen Name Redacted

I have been there many, many times and not seen any confrontations or problems. Be careful how much change you make to solve a small problem.

12/15/2023 09:40 AM

Screen Name Redacted

Richmond already is very dog-unfriendly, with very very limited real dog parks (really, this is the only one). Caged areas for dogs are not an alternative.

12/17/2023 04:28 PM

Screen Name Redacted

It's very important to allow the dogs to be off leash and not get in the way of cyclists. It's also important to keep the cyclists from running into the dogs, so I really support separate areas with fences.

12/22/2023 04:43 PM

PRCS - 196

Screen Name Redacted

12/25/2023 04:00 PM

First you drove us off the west dyke. Then as Garry Point was changed from industrial area to a park you drove us out of there. Now after we the dog owners made this park you are limiting the last area we had and have over time introduced and increased bikes travelling through it. This city has no appreciation for dogs or their owners and today I wouldn't want to have a new dog in this city. There is NO good will or faith here only extreme disappointment. You people are not very nice.

Screen Name Redacted

12/28/2023 12:25 PM

I made many statements in my previous answers that feels repetitive. My primary thought is that this whole exercise is a continued unilateral deference to cycling. Taxpayer money continues to be thrown at ensuring cyclist's "needs" are met. Actual monitoring and enforcement of posted speed limits is the core problem. This core problem is exacerbated by escalating technology that allows cyclists to reach speeds of automobiles with the push of a button. As a near-daily user of the dog park, and a founding board member of Steveston Velo (cycling club), I view both sides of this as a user. There are simple solutions that can address this conflict. None have been presented in this proposal enquirer.

Screen Name Redacted

12/28/2023 03:51 PM

Leave the off leash park as is. There are very few cyclists and they should not override dogs usage on the trail. There aren't that many places for dogs to be like dogs and have fun.

Screen Name Redacted

12/31/2023 10:07 AM

There are not many areas in Richmond where dogs and owners can walk together, with the dogs off leash. There are, however, many miles of roads, paths and dikes for cyclists to use. The very name of this park indicates that it is well used and much loved by dog owners, and it would be a real loss to the thousands of dog owners in Richmond if it became primarily another cycling trail.

Screen Name Redacted

1/01/2024 09:32 AM

When the dyke was made higher at the dog park there was zero consideration made for dogs that like to make their way to the water. It would be nice if there was a ramp or easier way to reach the water. Also the large tree with swing and tall grasses was a favourite with all dogs and that appears to have been destroyed and removed from all the options. It really seems that that there are no real dog owners on the planning group that made all the changes to the park.

Screen Name Redacted

1/04/2024 05:54 PM

It's a nice Pluto go for a walk.

PRCS - 197

Screen Name Redacted

1/04/2024 06:04 PM

I think bikes should be separated due to the speed of some bikes and now the electric bikes

Screen Name Redacted

1/04/2024 06:05 PM

Parks staff are doing a great job. Most of the signatures in the petition were those from cycling clubs. There are countless other places to cycle in Richmond where they can feel "safe". Don't ride your bike through a dog park if you're afraid of dogs.

Screen Name Redacted

1/04/2024 06:11 PM

I would love to see the current off-leash trail style maintained somehow, as opposed to moving to a fully fenced dog park style. I think this allows for the owners to walk and exercise as well. At the same time, I think cyclists should have a path where dogs must be leashed. I think presence of bylaw enforcement will be needed to monitor compliance or the conflicts will continue.

Screen Name Redacted

1/04/2024 06:11 PM

Think walkers and bikes should have priority. Dogs on lease only. Like to keep lead off dogs off the walk way.

Screen Name Redacted

1/04/2024 06:11 PM

Cyclist already are eating up our space on major roads, are not responsible, why can't residents have a safe place to walk their dogs without this conflict

Screen Name Redacted

1/04/2024 06:16 PM

It is one of the best off leash areas because it is so large, so spacious and gives such a sense of freedom of movement. My dog just loves it. In fenced in enclosures, she just stands and waits to leave. Would rather be walking on a leash then.

Screen Name Redacted

1/04/2024 06:16 PM

None

Screen Name Redacted

1/04/2024 06:21 PM

Enforcement of the rules should also be included to ensure both cyclists and dog owners are adhering to expectations.

Screen Name Redacted

1/04/2024 06:28 PM

Previous comment about not having dogs on leash and cyclists use same path.

Screen Name Redacted

1/04/2024 06:41 PM

I have enjoyed this park as a dog owner in the past - but I found myself in a situation once when a family was having a picnic on one of the benches and the dog was as my dog's mouth level and he had

PRCS - 198

a nibble of something! While I apologized to the family, they were very angry and told me to control my dog. I told them they had open food in an off leash dog park ... they did not know that! (This was years ago before all the signage!) I also live near the park and it's part of my running and walking route. I also recently got an E-bike and enjoy the path along there to take me to Finn Slough - I like to avoid the road as much as possible. Hopefully people Can coexist and enjoy the park area by following the posted rules!

Screen Name Redacted

1/04/2024 06:59 PM

I want cyclists banned from the dog park, and redirected down 3 road to Finn slough

Screen Name Redacted

1/04/2024 07:05 PM

Thank you, city of Richmond, for creating this beautiful space to enjoy.

Screen Name Redacted

1/04/2024 07:14 PM

Option c most closely resembles the current situation.

Screen Name Redacted

1/04/2024 07:35 PM

I'd like to see a gate between the parking lot and dog park. This will alleviate the safety issue with dogs or kids running into the parking lot where cars can be in movement. Garbage cans at reasonable intervals spanning the length of the park would be ideal. Maybe add some large logs or ramps to offer some agility features. Water fountain on east and west end would be ideal too.

Screen Name Redacted

1/04/2024 07:39 PM

As a dog owner, I like the idea of fencing I. The off leash area. I would use it more if it was fences in so it gives owner a choice and also safer for cyclist.

Screen Name Redacted

1/04/2024 07:44 PM

A fence to block unleashed dogs would be absolutely necessary to properly separate cyclists/pedestrians from the danger of bumping into dogs. I would go further and recommend that no dogs, leashed or not, be allowed on the south walkway.

Screen Name Redacted

1/04/2024 07:53 PM

make it a full dog park let the bike go down finn road

Screen Name Redacted

1/04/2024 07:56 PM

We need more off leash trail walking park and not just a fence off area for dogs. It's confined and small and not all dogs enjoy it.

Screen Name Redacted

1/04/2024 08:10 PM

I am in favour of these changes to the No. 3 Road Bark Park to separate off-leash dogs from pedestrians, dogs on leash and cyclists. I enjoy walking along the east dyke to Finn Slough but the roaming of off-leash dogs has meant this is not an option for me to walk my dog on leash.

Screen Name Redacted

1/04/2024 08:21 PM

I have not had any negative run-ins with cyclists while taking my dogs for an off leash walk at Bark Park. Most dogs are well behaved and under control of their owners. Most cyclists are respectful and ride cautiously through the park. I have no problem with the way the park is configured now. Torn between A and C because I would prefer more space, but the raised path is the more enjoyable walk. For Option A, many cyclists are entering the park from the parking lot, which may cause a conflict.

Screen Name Redacted

1/04/2024 08:56 PM

I don't understand why there is a problem with the way the park is now. I am a dog owner that's at the park daily. When riders and runners come by we call the dogs to us to allow them to go by. It's called common courtesy and everyone using this park needs to exercise that. Cyclists and runners can do their activity anywhere, we dog owners don't have that privilege. If anything should be changed, is the off-leash trail continue around Crown Packaging to the off-leash at Finn Slough Park.

Screen Name Redacted

1/04/2024 08:49 PM

None

Screen Name Redacted

1/04/2024 08:54 PM

This is such a great space for dogs to run. A fence along the north side of dyke trail may be needed to ensure overly exhuberant dogs don't run onto main walking biking path

Screen Name Redacted

1/04/2024 09:06 PM

It used to be that bikers were supposed to dismount and walk through the area of concern. They never did, but I don't see how hard that would be? I agree they need to be able to move through the Bark Park safely and without dogs bothering them.

Screen Name Redacted

1/04/2024 09:29 PM

Please enforce the dog rules along the whole dyke. Many people think it is ok to have their dogs rumming around on the beachfront off leash. This has caused issues with people who are just trying to enjoy the quiet beachfront dog poop free and without dogs running all over your blankets ect.

Screen Name Redacted

1/04/2024 10:17 PM

There seems to be issues with the grassy areas not being able to grow.

Screen Name Redacted

1/04/2024 10:20 PM

Locals and tourists get great pleasure from watching the Fraser River, boats, marine life, etc., dogs not so much. That is why the people should get the Dyke and the view of the river.

Screen Name Redacted

1/04/2024 11:59 PM

Please see to improving cycling infrastructure/safety between Steveston village and Bark Park. Ideally, there should be a continuous MUP that's adjacent/parallel to Dyke Rd. Just imagine if one could cycle around the entirety of Lulu island along the dyke!

Screen Name Redacted

1/05/2024 06:30 AM

Cyclists seem to ignore signage

Screen Name Redacted

1/05/2024 08:58 AM

Keeping bikes separate from bark park is important for safety

Screen Name Redacted

1/05/2024 10:45 AM

Preference is to keep off leash area as large as possible. Do not separate the off leash area into three different dog parks. Keep one large off leash area.

Screen Name Redacted

1/05/2024 11:44 AM

The current model and option C are unacceptable in my mind as they exclude either by design or by default anyone who is not a dog-owner - currently it is uncomfortable either riding or walking through that area as a non-dog-owner.

Screen Name Redacted

1/05/2024 12:07 PM

I would love having the cyclists and pedestrians separate from each other. I would like a path on the north side for cycling and separately, a off leash dogs and multi use path on the south side. Cyclists passing through that area move faster than the other users, and don't need to have the "view" of the water. If they want to stop, they can slow down and go to the multi use path. A smaller fenced in area for smaller dogs could be set up in the middle.

Screen Name Redacted

1/06/2024 04:16 PM

There are very few places left in Richmond where people can legally take their dog for a true off-leash walk experience. The city has invested millions of dollars to create lanes and paths for cyclists. If cyclists would like to avoid the dogs, they can easily use Finn Road instead. This road has very little traffic and is not too much of a detour. If we use the Bark Park as a true off leash dog area, dogs

PROS - 201

owners will only have Woodward's Slough and McDonald Beach for true off-leash walking experiences. Fenced-in dog parks are not the same. First of all, many dog trainers advise against taking your dog there because of the pack mentality it creates. Second, several elderly or mobility-impaired individuals take their dogs there. Young energetic dogs need to run around with each other and play together. Often when they are in a good play, they forget to look where they are going and run into things. This makes it a safety issue for individuals who are not steady enough on their feet to withstand a couple of dogs running into them. However, both groups deserve a spot where they can go to relax.

Screen Name Redacted

1/05/2024 12:45 PM

Thank you for conducting this survey. I look forward to the day when I can cycle through this park without needing to be watchful of dogs that may chase me.

Screen Name Redacted

1/05/2024 01:26 PM

Cyclists need to slow down and give a warning when approaching a pedestrian from behind. It is a very short distance and there is no need for cyclists to be speed racing through the area. City Staff should have drop-in days when they can monitor and educate both cyclists and dog owners. Dog owners should also be encouraged to keep their dogs under control and when a cyclist is approaching, teach their dog to sit until the cyclist passes. Good manners and common sense on both sides would go a long way to making the park a safe and enjoyable place for everyone.

Screen Name Redacted

1/05/2024 01:50 PM

What is the plan for the trail section between the bark park and the off-leash at Fynn Slough?

Screen Name Redacted

1/05/2024 02:29 PM

Signs should be picture only. Reading English is more difficult than speaking English.

Screen Name Redacted

1/05/2024 02:55 PM

All proposed changes to Bark Park need to be shared with the park users prior to being presented to City Council.

Screen Name Redacted

1/05/2024 03:18 PM

Put the fence line as close to the dyke path as possible - lack of green should help provide a visible deterrent to dog-walkers to avoid this portion of the dyke for walking their dogs on, or off-leash, with emphasis on the dog owners that still insist on having their dogs off-leash. Having greenery on the other side of the fence will be attractive for them to use the dog-park side of the fence in this area.

Screen Name Redacted

n/a

1/05/2024 08:32 PM

Screen Name Redacted

1/05/2024 09:37 PM

Tired of the animosity. That trail is a through route for bikes in the south. There should be accommodations for cyclists if Richmond wants to move forward with a green transportation plan. Unfortunately, the animosity towards cyclists continues and is dissuading people from choosing alternative forms of transport. At this particular park it makes most sense to have the cyclists continue on the natural path from the parking lot and leave the dogs to enjoy their furry freedom to the south. It is the safest for all parties.

Screen Name Redacted

1/06/2024 11:38 AM

I used to walk this route regularly (as a pedestrian without a dog), at least one or twice a month we were frequently bother by dogs. Then one day a dog jumped up and sunk his teeth into my friend's arm, fortunately her puffy jacket slipped a little and her arm was only bruised the teeth went into her jacket. the dog's owner sad we had no business being there it was a dog park!! I look forward to being able to use this part of the Dyke trail again!

Screen Name Redacted

1/06/2024 12:01 PM

Blocking off the water for the dogs is the safest option for the dogs. Providing the bikers with the upper dike (south) is what makes the most sense for bikers and the dogs. There are very few dog parks in Richmond so having this space is important.

Screen Name Redacted

1/06/2024 12:10 PM

I don't see many/any bike conflicts with dogs. Cyclists generally seem to understand they are entering an off leash park and slow down as necessary.

Screen Name Redacted

1/06/2024 03:08 PM

Bikes should not be allowed in the park and park parking should be only for park users

Screen Name Redacted

1/06/2024 08:04 PM

Again, please do not reduce this park to yet another pen style off leash area or restrict off leash access to the river path. There is real community connection here of people and their dogs walking along and enjoying the beauty of the river. Even folks without dogs come to enjoy the dogs playing and the sense of community. This is a significant joy and goodness in these times. It really would seem wisest to simply re-route the cyclists around the Bark Park entirely, as it was when the Bark Park was under construction. That would seem to address the problems for all involved. At the least, bollards would require cyclists to dismount for the length of the Bark Park. Or a gate would require them to stop and dismount, hopefully calling attention

PRCS - 203

to the guidelines and surroundings. It is challenging for everyone involved. Cyclists expect to come through at full speed and are frequently unaware that it is, in fact, a dog park (What are these dogs doing here?) and are dismissive of any concerns regarding their speed around the dogs. As noted simply following the guidelines already in place would solve this. But if this is too difficult, then reroute cyclists, and they can proceed as they prefer. As a side note: There are also quite a few thistle bushes in the Bark Park area. Thistles are a real concern. They get stuck in dogs ears, paws etc... and can cause serious problems. Some dogs have needed vet care for these. They are dangerous to dogs and children also. It would be great if something could be done about those. Thank you for your thoughtful consideration.

Screen Name Redacted

1/07/2024 10:50 AM

please put some garbage cans along dyke access.

Screen Name Redacted

1/07/2024 08:21 PM

It's really great the way it is. Why would you change it for a few complaints and the few cyclists who think they own all roads. All the others who respect each others use would likely out number the few who have raised an issue. If people are happy with something then nothing is said. Wish we had a kudos area and not just a complaints department. Just man up and tell people to follow the signs. If there really must be something done why not put in slow rails / open bar fence at the entrance and exit (even in the middle) so cyclists have to dismount to go through. This may be more cost effective. (the square upright bars that are parallel and overlap but act like an open fence)

Screen Name Redacted

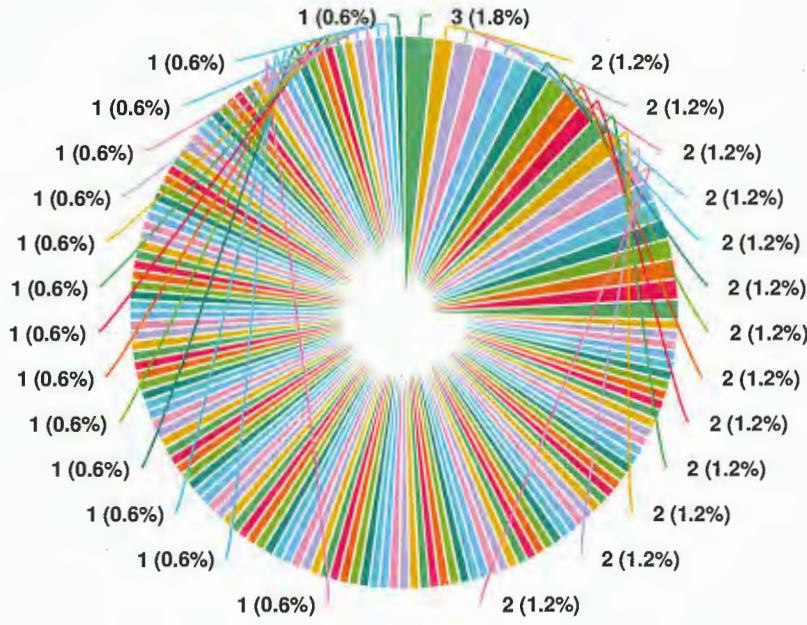
1/07/2024 09:04 PM

All park trails should be designed with equity in mind, especially when it comes to views or access to water.

Optional question (173 response(s), 83 skipped)

Question type: Essay Question

Q9 My postal code is:



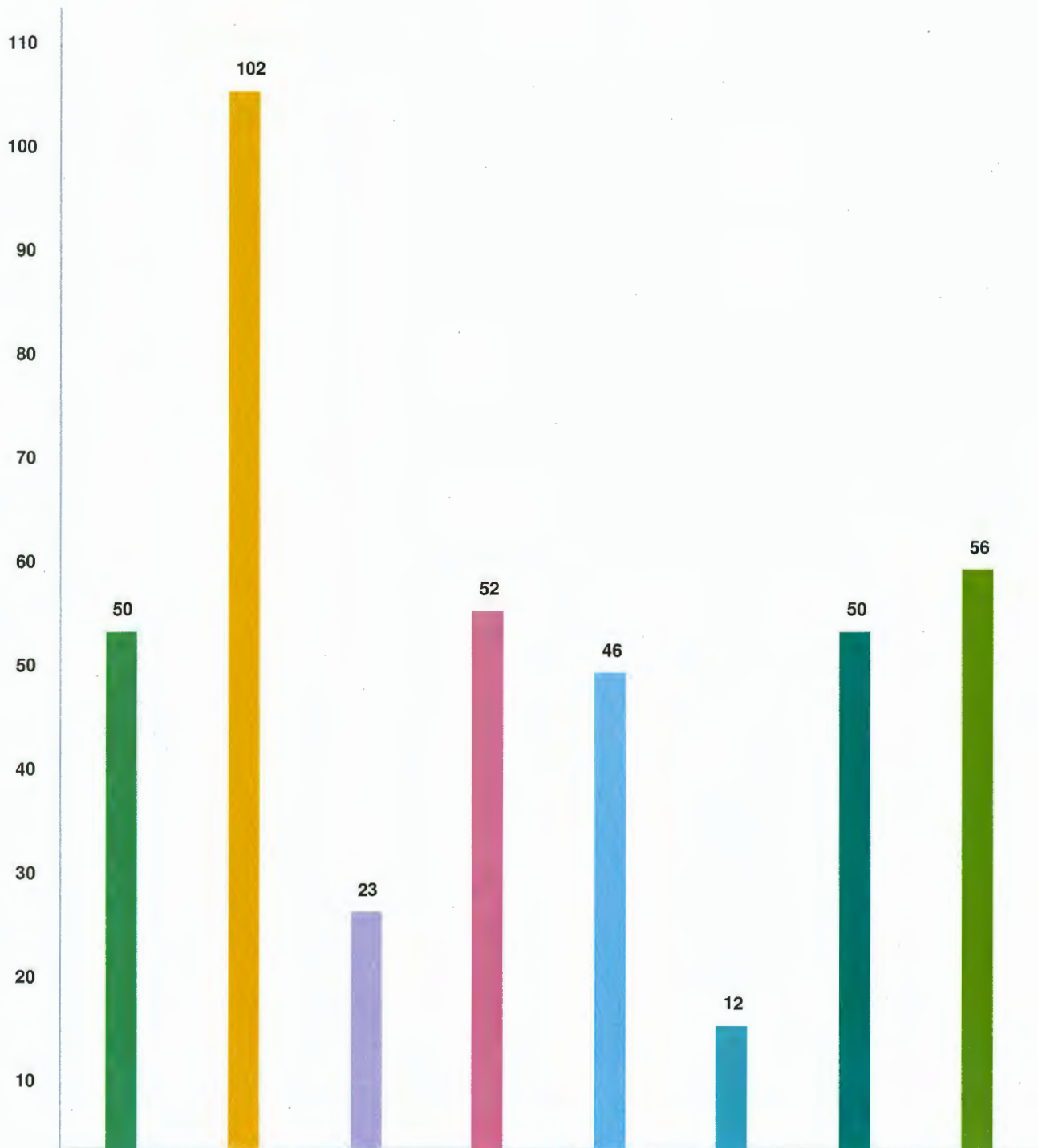
Question options

- Richmond, BC, V6Y2C1
- Richmond, BC, V7E4Z9
- Richmond, BC, V7E0A1
- Vancouver, BC, V5N2J8
- Richmond, BC, V7E4H5
- Richmond, BC, V6V2W5
- Richmond, BC, V7A3N3
- Richmond, BC, V7E5C5
- Richmond, BC, V7E3B7
- Richmond, BC, V7C4V7
- Richmond, BC, V6Y3C6
- Richmond, BC, V7A3L4
- Richmond, BC, V7E4V9
- Richmond, BC, V7A4X4
- Richmond, BC, V7C3P5
- Richmond, BC, V7E6C9
- Richmond, BC, V6X1N7
- Avondale, NL, A0A1B0
- Richmond, BC, V7A4G6
- Richmond, BC, V6V2P4
- Richmond, BC, V7E5K9
- Richmond, BC, V7E2E2
- Richmond, BC, V6Y4J1
- Richmond, BC, V7A4Z8
- Richmond, BC, V7E5W6
- Richmond, BC, V7E4E2
- Richmond, BC, V7E4N7
- Richmond, BC, V7C5B2
- Richmond, BC, V7E1H7
- Richmond, BC, V6Y4H2
- Richmond, BC, V7E6N1
- Richmond, BC, V7A4J1
- Richmond, BC, V7C4S2
- Richmond, BC, V6Y4H3
- Richmond, BC, V7C4Z2
- Richmond, BC, V7E5R2
- Richmond, BC, V7E5W5
- Richmond, BC, V7E3Z2
- Richmond, BC, V6V2P8
- Richmond, BC, V6Y2P8
- Richmond, BC, V7C4T8
- Richmond, BC, V7E3Z6
- Richmond, BC, V7E4G5
- Richmond, BC, V7E6B1
- Richmond, BC, V7E6J9
- Richmond, BC, V7C3V7
- Richmond, BC, V7E1A8
- Richmond, BC, V7C5N7
- Richmond, BC, V7C3M2
- Richmond, BC, V6Y1Y4
- Richmond, BC, V7E4T9
- Richmond, BC, V7C3L3
- Richmond, BC, V7A4S4
- Richmond, BC, V7E3G9
- Richmond, BC, V7E3Z5
- Richmond, BC, V7E4W5
- Richmond, BC, V7C4V8
- Richmond, BC, V7E6B4
- Richmond, BC, V7C4H1
- Richmond, BC, V7E4X5
- Richmond, BC, V7E2Z1
- Richmond, BC, V7A1A2
- Richmond, BC, V7E6C8
- Richmond, BC, V7C4E7
- Richmond, BC, V7E3W7
- Richmond, BC, V7E4P5
- Richmond, BC, V7E6J6
- Richmond, BC, V7E5B8
- Richmond, BC, V7B1J3
- Richmond, BC, V7A2Y6
- Kimberley, BC, V1A2L3
- Richmond, BC, V7E4P8
- Richmond, BC, V7E4M4
- Richmond, BC, V7E4G1
- Richmond, BC, V7E2E3
- Vancouver, BC, V5R1N1

1/3 ▼

Optional question (169 response(s), 87 skipped)
Question type: Region Question

Q10 I heard about this engagement via (check all that apply):



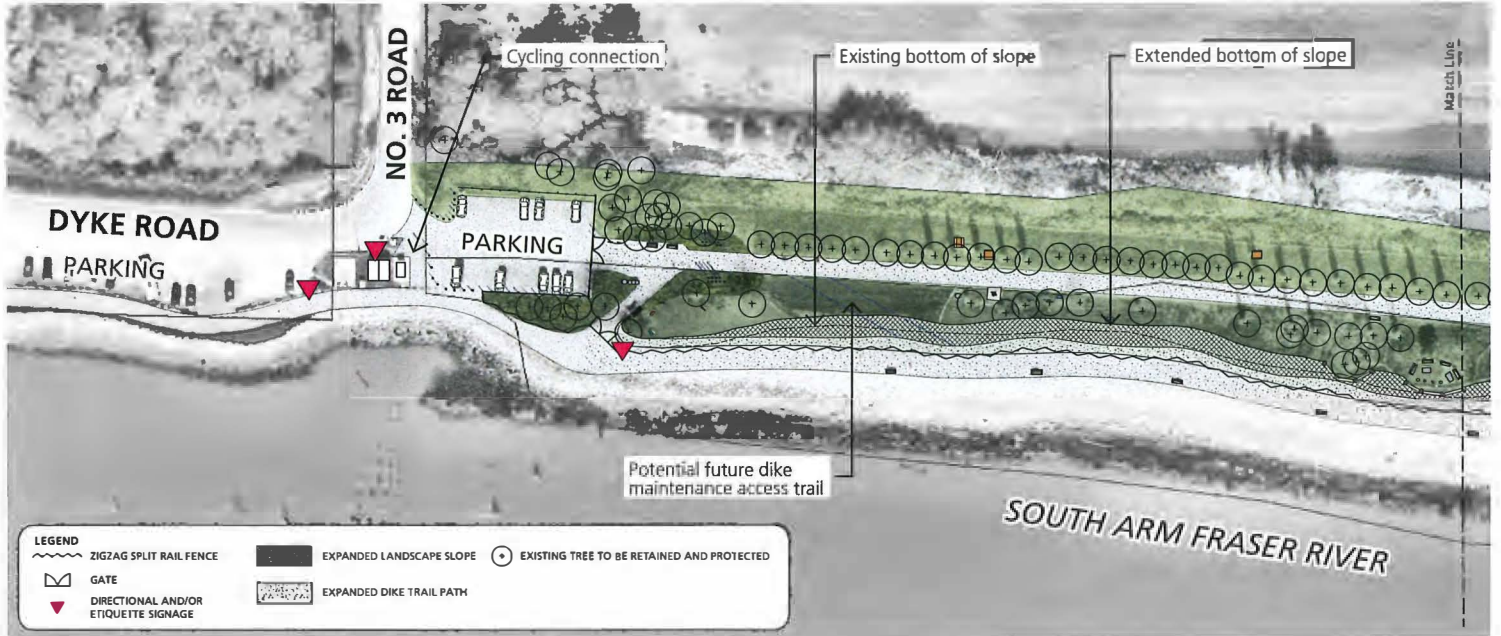
Question options

- Other (please specify)
- Word of mouth
- On-site open house
- Signs posted at No. 3 Road Bark Park
- Social media posts
- Richmond.ca website
- LetsTalkRichmond.ca website
- City mailer

Optional question (251 response(s), 5 skipped)
Question type: Checkbox Question

No. 3 Road Bark Park Proposed Enhancements

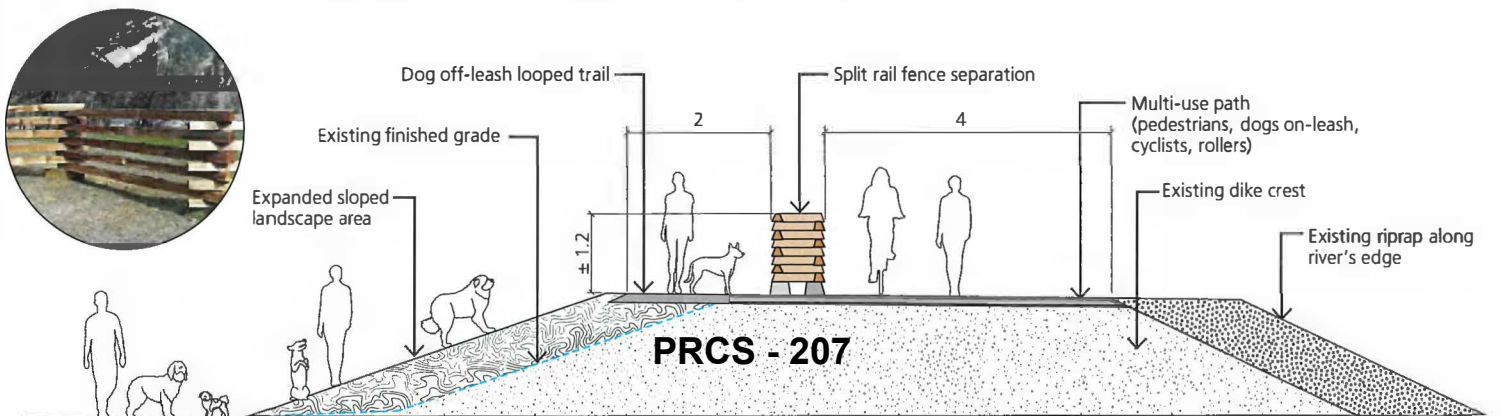
Proposed Enhancements (West)



Proposed Enhancements (East)



Proposed Enhancements - Typical Cross Section at Dike Trail



Enhancement Diagram (West)



Enhancement Diagram (East)

