



# City of Richmond

## Report to Committee

**To:** Parks, Recreation and Cultural Services  
Committee

**Date:** April 4, 2018

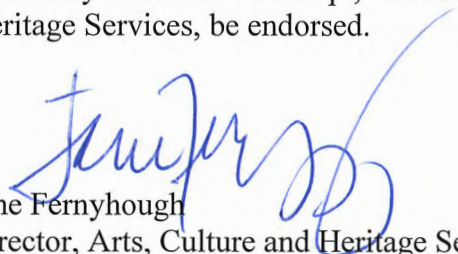
**From:** Jane Fernyhough  
Director, Arts, Culture and Heritage Services

**File:** 11-7000-09-20-225/Vol  
01

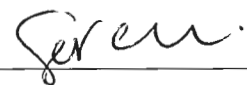


**Re:** Gilbert Road Greenway Public Art Concept

### Staff Recommendation

That the concept proposal and installation for the Gilbert Road Greenway public artwork “Wind Flowers” by the artist team Atelier Anonymous, as presented in the report titled “Gilbert Road Greenway Public Art Concept,” dated April 4, 2018, from the Director, Arts, Culture and Heritage Services, be endorsed.

  
Jane Fernyhough  
Director, Arts, Culture and Heritage Services  
(604-276-4288)

Att. 1

REPORT CONCURRENCE		
<b>ROUTED TO:</b>	<b>CONCURRENCE</b>	<b>CONCURRENCE OF GENERAL MANAGER</b>
Finance Department Parks Planning and Design Transportation	<input checked="" type="checkbox"/> <input checked="" type="checkbox"/> <input checked="" type="checkbox"/>	
<b>REVIEWED BY STAFF REPORT / AGENDA REVIEW SUBCOMMITTEE</b>	<b>INITIALS:</b> 	<b>APPROVED BY CAO</b> 

## Staff Report

### Origin

On July 10, 2017, Council endorsed the issuance of an artist call for the Gilbert Road Greenway Public Art Project, as described in the staff report titled, “Gilbert Road Greenway Public Art Opportunity.” The artist call provided terms of reference, including that the artists:

- consider the themes of “Gateway” to create a sense of place and cultural identity for residents and a welcoming experience for visitors; and
- “Heritage” in reference to the history of the site from the past to the present and from the natural ecology of the Fraser River to the urban environment of Richmond City Centre.

The artwork may be a single integrated artwork, or series of sequential pieces, to further address the themes mentioned above.

This report supports Council’s 2014-2018 Term Goal #2 A Vibrant, Active and Connected City:

*Continue the development and implementation of an excellent and accessible system of programs, services, and public spaces that reflect Richmond’s demographics, rich heritage, diverse needs, and unique opportunities, and that facilitate active, caring, and connected communities.*

*2.1. Strong neighbourhoods.*

*2.3. Outstanding places, programs and services that support active living, wellness and a sense of belonging.*

*2.4. Vibrant arts, culture and heritage opportunities.*

### Analysis

#### Gilbert Road Greenway

The Gilbert Road Greenway is located at the southeast corner of the River Parkway and Gilbert Road intersection. The frontage improvements—including street trees and pathways—are currently underway at this prominent location where traffic enters Richmond via the Gilbert Road gateway corridor.

Located in the Gilbert Road right-of-way adjacent to the new Riva development at 5311 Cedarbridge Way, the new Gilbert Road Greenway art work will serve as a landmark for vehicular traffic to and from the Dinsmore Bridge, and as a gateway to the future Middle Arm Park on the City-owned lands at 7080 River Road.

#### Design Considerations, Constraints and Opportunities

It is envisioned that the plaza located at the Gilbert Road Greenway will be used year-round by local residents for leisure purposes and by pedestrians and cyclists using the greenway network.

By involving artists with the City staff design team, there is an opportunity to develop a unique project specific to the Richmond context. In particular, the artist will need to consider the uses and programming for the Greenway, maintenance costs and concerns, and a design that would be of interest to locals and visitors alike.

#### Selection Process for Artists and Artworks

On July 24, 2017, an artist call was issued to select and contract an artist, or artist team, as part of the Gilbert Road Greenway planning process with a deadline of September 14, 2017. Professional artists residing in Canada were eligible.

#### Gilbert Road Greenway Public Art Opportunity - Public Art Artist Selection Process

During the first stage of the process, 39 submissions by artists from across Canada were received. On September 27, 2017, following the Public Art Program's administrative procedures for artist selection for civic public art projects, a selection panel comprised of two Richmond residents and three Vancouver-area arts professionals reviewed the submissions.

Members of the selection panel included:

- Kathleen Beaumont, retired planner;
- Vance Harris, architect;
- Leo Mol, photographer;
- Judy Oberlander, arts and culture administrator; and
- Debra Zhou, art professional.

City staff from the Public Art Program and Parks Planning attended the selection panel meeting to provide project background for the selection panel and to address technical questions.

In reviewing the submissions, the selection panel considered how the proposal responded to the themes identified in the artist call and the potential to create a compelling work of art as evidenced in the samples of past projects provided by the applicants.

These criteria included:

- artistic merit of the artist statement;
- theme of site and histories;
- appeal to multiple audiences;
- theme of environmental concerns; and
- qualifications based on past projects.

Following discussion and deliberation, the panel shortlisted five artists and artist teams to develop their initial approach to the project and present a concept proposal in an interview with the selection panel.

The shortlisted artists were:

- Jacqueline Metz and Nancy Chew, Vancouver, BC;
- Hadley Howes, Toronto, ON;
- Atelier Anonymous (Alyssa Schwann, and Michael Seymour) Winnipeg, MB and Vancouver, BC;
- Douglas Taylor, Vancouver, BC; and
- Michael Nicoll Yahgulanaas, Vancouver, BC.

As per the terms of reference, the preliminary concept proposals by the five shortlisted finalists responded to the themes of “Gateway” and “Heritage.” These themes reflect the Gilbert Road Greenway’s significant role as an entrance to Richmond and a connection to the past for visitors to the City Centre and Oval Precinct. The five proposals represented a wide range of styles and materials, from colourful, whimsical approaches to meditative contemplations on the environmental history of the site.

The selection panel provided recommendations for the shortlisted artists to consider in advancing their concept proposals, including identifying technical concerns.

The artists attended site orientations with staff on October 17 and 19, 2017, and refined their concept proposals for submission to the City by November 29, 2017. City staff reviewed the proposals for technical concerns and provided comments. These comments were considered by the selection panel prior to its final recommendation.

On December 7, 2017, the selection panel met to interview the five shortlisted artist teams. Following lengthy and thoughtful deliberation, the panel recommended the concept proposal *Wind Flowers* by the artist team Atelier Anonymous, led by Alyssa Schwann and Michael Seymour. The panel praised the proposal for its poetry and acknowledgement of the ecological network and for its integration with the length of the site.

#### Recommended Artist

The artist team Atelier Anonymous, led by Alyssa Schwann and Michael Seymour, has extensive public art experience. In 2016, the team completed an innovative nest for barn owls project for the Jayden Mews townhouse development located in the common landscaped courtyard along Alderbridge Way and facing the Garden City Lands, which is a hunting habitat for the barn owls.

#### Recommended Public Art Concept Proposal

The proposal *Wind Flowers* responds to the environment and history of the Gilbert Road Greenway with a series of undulating “wind-catchers” placed on a series of planted beds to provide a visual gateway through the site and an entry landmark for passing vehicles. Attachment 1 provides detailed information about the proposal.

The artist describes the artwork as follows:

*“Wind Flowers has been influenced by Richmond’s shipbuilding and aviation traditions. The development history of the city is closely linked to shipbuilding, manufacturing, and fishing industries. The form, material, and fabrication method of the art work evokes the city’s island location and manufacturing skill base. The art work reflects the land, to create a shared story that can both welcome and unite. The form of the work is inspired by natural forms: flowers native to Richmond and those that are culturally significant to those who have lived here since time immemorial.”*

### Community Engagement

The artists propose two public engagement events with neighbours and community groups to invite public dialogue and offer education on the rationale and intentions of the artwork.

An artist talk and presentation is proposed to be held in spring 2018. The presentation would provide an opportunity for local residents to learn more about the rich ecology of Richmond, as the City prepares a new piece of art: a gateway to the ecological network of the city. The artists will introduce the intentions behind the work and ask the community to share stories and ideas about what Richmond’s local environment means to them.

The second event will offer a family-friendly hands-on art-making activity to raise awareness of the local ecology. The artists will invite participants to answer the question: how can we choreograph with nature? through arts and craft model-making activities.

A technical review and coordination phase with the City design team will be included with the Design Development phase of the artwork. The exact final location of the individual *Wind Flowers* will be determined at the technical review and co-ordination phase. The artist team, City staff and design consultants will continue to meet to review construction coordination and implementation budgets.

On January 16, 2018, the Public Art Advisory Committee reviewed the selection process and the concept proposal; they endorsed the *Wind Flowers* project. It was noted that the large scale of this piece will have an impact on the space and also noted the importance of place-making. Recommendations raised by the Committee concerning the movable elements will be addressed by the artist during design development.

### **Financial Analysis**

The project is fully-funded and the endorsement of the report will not have any financial implications.

Funding for this project is through the private development public art contributions for Onni Riva Development at 5311 Cedarbridge Way and the Onni Ora development at 6951 Elmbridge Way.

The total project budget for the Gilbert Greenway Public Art Opportunity is \$350,000. An allowance of \$30,000 has been set aside for a project contingency and \$20,000 for all associated

administration (total of \$50,000). The remaining budget of \$300,000 will be allocated for implementation costs including design, engineering fees, fabrication, installation, taxes and all associated costs to deliver a completed artwork integrated with the site. The artists have provided a preliminary project budget on page 12 of Attachment 1.

Funding for the public artwork is available from the approved 2016 Public Art Capital Budget from the private developer contributions. Any repairs required to the artwork will be the responsibility of the Public Art Program. City funds for maintenance would be allocated out of the Public Art Program's annual Operating Budget.

**Financial Impact**

None.

**Conclusion**

Adopted by Council on October 11, 2011, the City Centre Area Public Art Plan provides a framework for including art in creating a culturally rich environment in a vibrant, healthy and sustainable city. The Gilbert Road Greenway Public Art Opportunity supports the Plan to include an integrated artwork in the new Gilbert Road Greenway.

A major artwork at this gateway to the City Centre provides an opportunity to reveal the history of Richmond and, in particular, the ecological heritage of the site.

Staff recommend that Council endorse the proposed concept and installation of the Gilbert Road Greenway Public Art public artwork entitled *Wind Flowers*, by the artist team Atelier Anonymous led by Alyssa Schwann and Michael Seymour, as presented in this report.



FOR

Eric Fiss, Architect AIBC, PIBC  
Public Art Planner  
(604-247-4612)

Att. 1: Concept proposal for *Wind Flowers*

Gilbert Road Green . Proposal for a Gateway

# Wind Flowers



Atelier Anonymous + Michael Seymour





## PROJECT INFLUENCES.

---

### TUNED TO THE WIND .

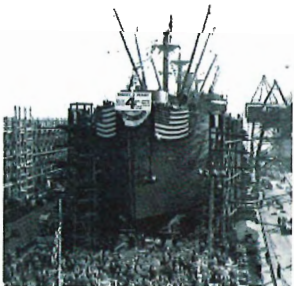
The structures are tuned to the wind, responding to the predominant southern and easterly breezes.



'A SUDDEN GUST OF WIND  
(AFTER HOKUSAI)'  
JEFF WALL  
1993

### MANUFACTURING & INNOVATION LEGACY . AIRCRAFT & VESSELS

Wind Flowers has been influenced by Richmond's shipbuilding and aviation traditions. The development history of the city is closely linked to shipbuilding, manufacturing, and fishing industries. The form, material, and fabrication method of the art work evokes the city's island location and manufacturing skill base.



(L)  
RICHMOND SHIPYARDS  
1942



(R)  
CANSO AMPHIBIAN AIR-  
CRAFT  
Sea Island was also home to the  
production of 'flying boats' and  
amphibian aircraft.



## PROJECT INFLUENCES

---

### ISLAND LANDSCAPE .

Wind Flowers is a reflection of Richmond's island landscape: an archipelago of its culturally diverse townships and citizens.



#### REFERENCES

Productive natural landscape, traditions of movement (aviation, horse racing, track, vessels), diverse community, townships, and innovation.

### CONNECTING TO THEMES . GATEWAY & HERITAGE

The art work reflects the land, to create a shared story that can both welcome and unite. The form of the work is inspired by natural forms: flowers native to Richmond and those that are culturally significant to those who have lived here since time immemorial.



#### REFERENCES

Native wildflowers to Richmond [L-R: Beach Pea, Jewelweed, Black Lily]

#### REFERENCES

Culturally significant plants to Musqueam [L-R: Camas Lily, Foxglove, Goldenrod]

## LOCATION ECOLOGICAL CORRIDOR

### GATEWAY TO RICHMOND'S ECOLOGICAL NETWORK .

The location of the greenway presents an opportunity to create an iconic landmark gateway – a welcome to the Ecological Network for the City of Richmond.

The site serves as an important link in connecting green corridors of habitat, green infrastructure, and recreation: the green infrastructure network envisioned for Richmond.

The Green Gateway will be an important landmark along scenic trails and cycle network, while positively contributing to enhancing biodiversity within the Ecological Network. The site presents an opportunity to continue to stitch together a diverse green fabric for the City of Richmond.

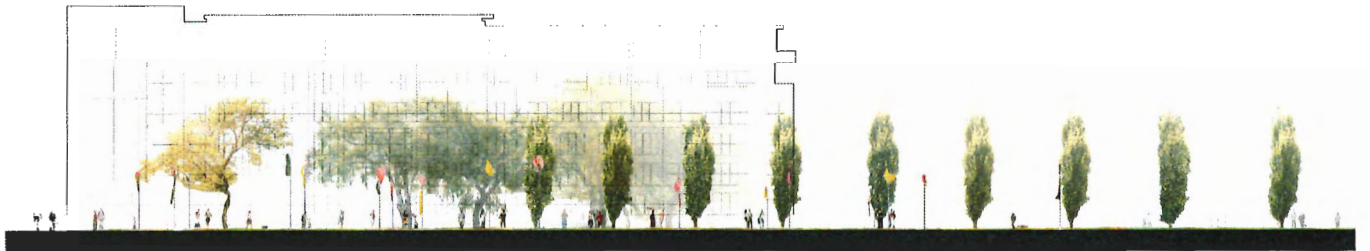


# DESCRIPTION OF THE WORK

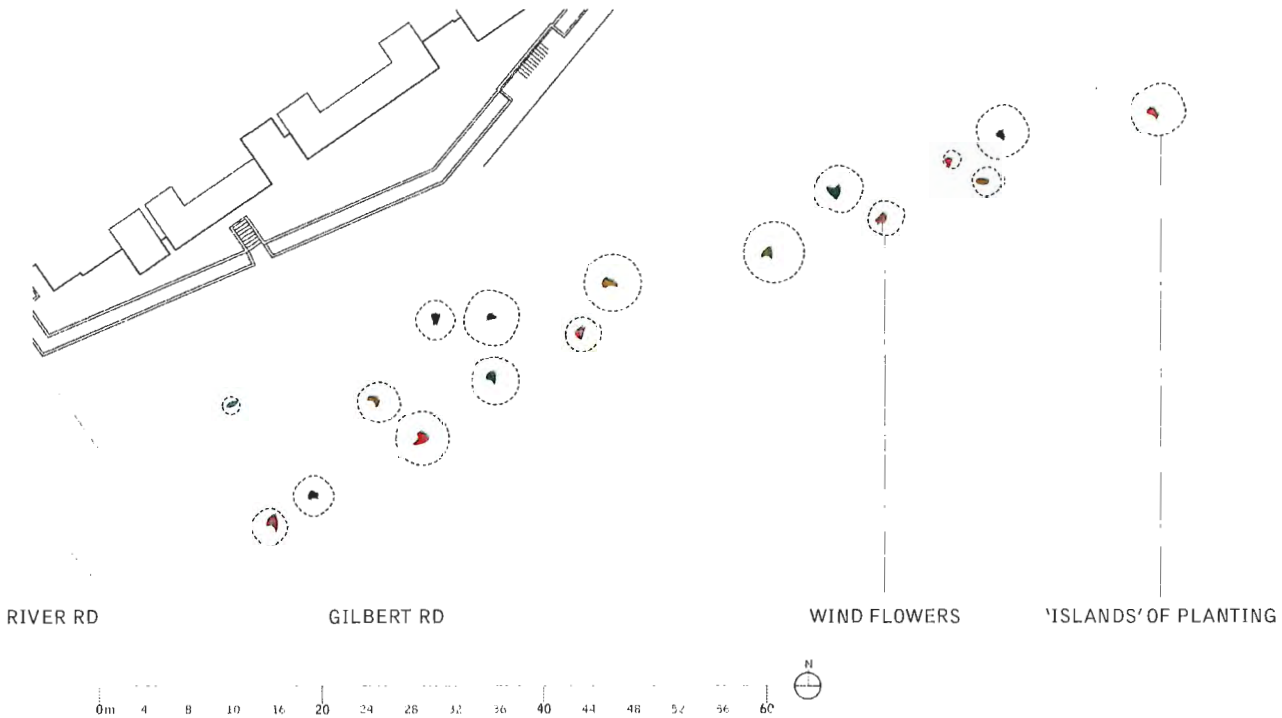
## SITE SPECIFIC WORK .

The work references the surrounding river delta ecosystem – an image fragile and shifting in the wind, barely graspable. Wind Flowers are a soft measure of this wind which traverses the river and islands.

As one approaches – by foot, by bike or passing in a car – each Wind Flower is experienced as a distinctive work, with its own character, set within its own habitat or 'island'.



*View from West*



*Site Plan, showing distribution of Wind Flowers*



## DESCRIPTION OF THE WORK

### CONNECTION TO THE LAND .

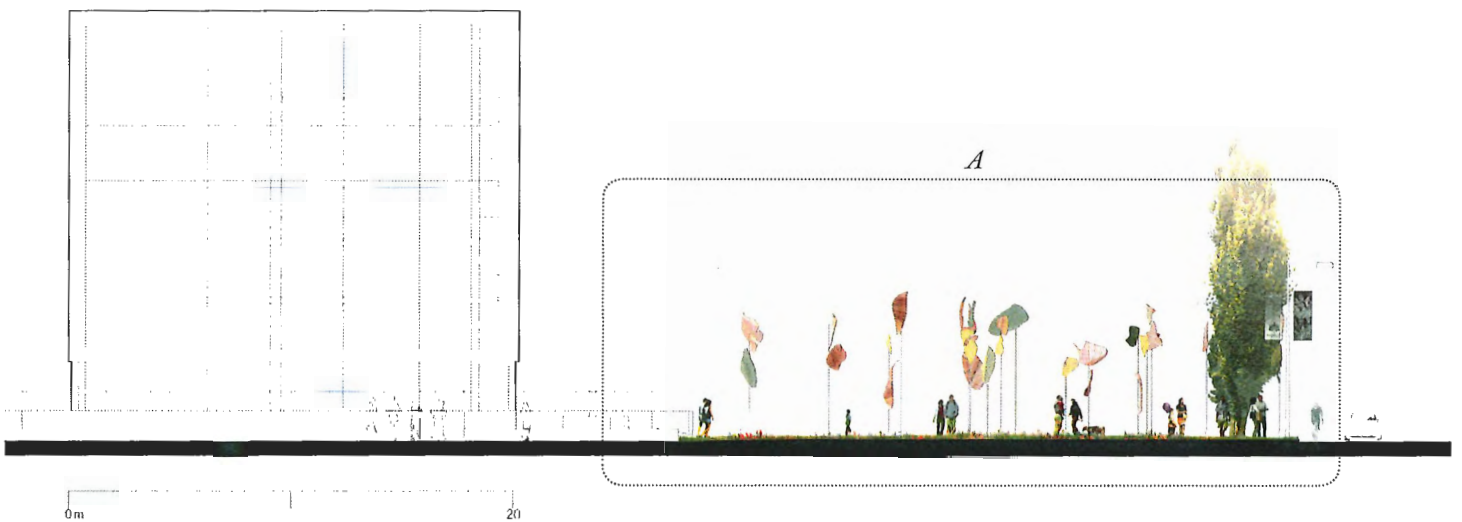
The collection of Wind Flowers are connected with the land, intending to be part of a diverse composition of stormwater management, trees, native flora, and habitat. They are conceived as an artwork set within the landscape rather than as elevated objects that are separated from their environment.



REFERENCES  
Trees, Native Flowers, Habitat

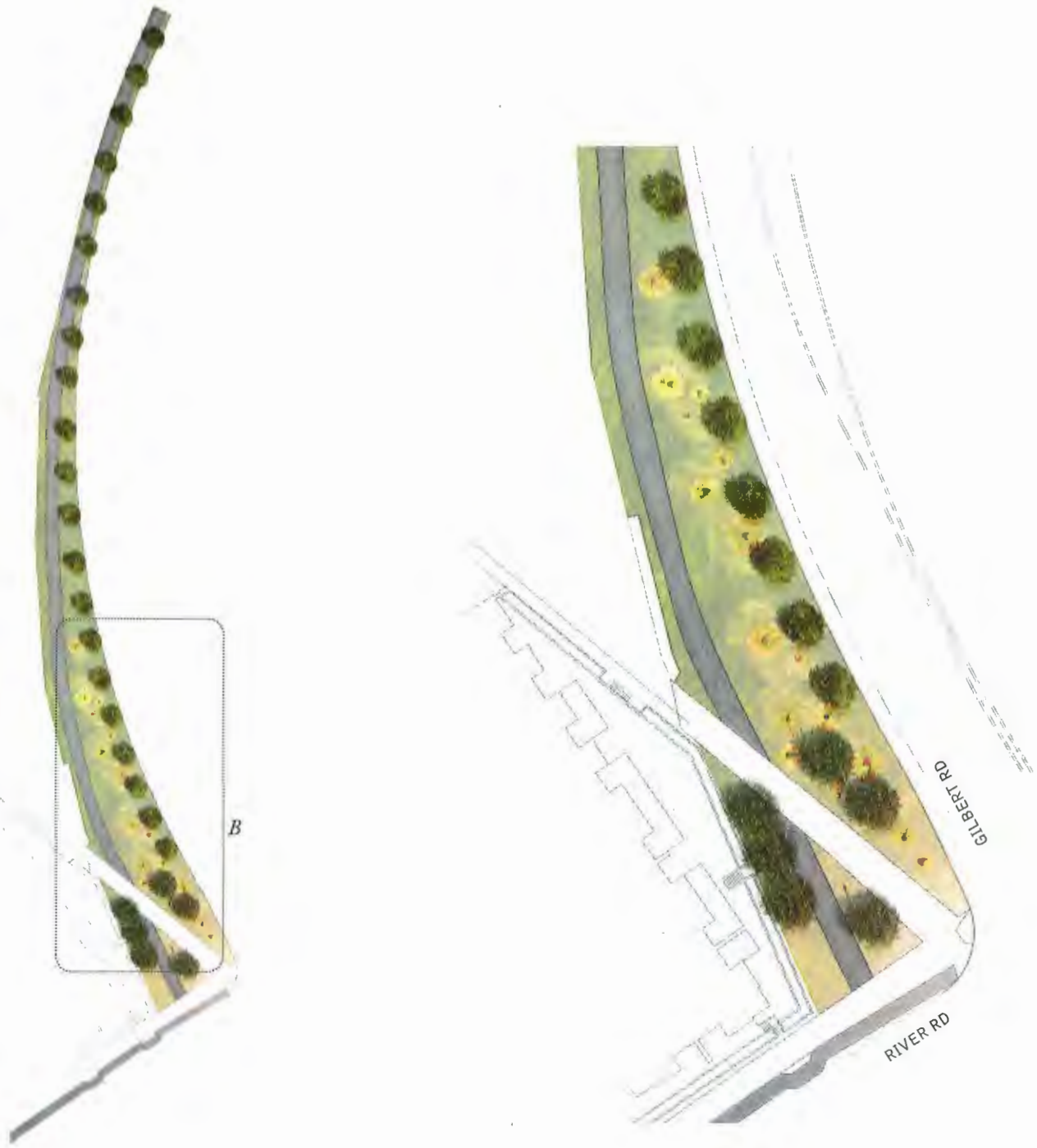


*A* View from North / Section through site (not to scale)



*View from North / Section through site*

SITE PLAN



*Gilbert Road Greenway*

**B** *Extent of Wind Flowers*

REPRESENTATIVE MODEL

MODEL AREA

1 & 2 ▼



1. View from North



2. View from North



## FABRICATION

---

### PRECEDENT . SHIPBUILDING & AVIATION

Shipbuilding methods will inform the construction of Wind Flowers. A fragile relationship between stability and instability is achieved by the utilization of fiberglass. The fabrication process has an established precedent in the shipbuilding and aviation industries in Richmond.



### REFERENCES

Fiberglass is a material familiar to both sport and the seaside.

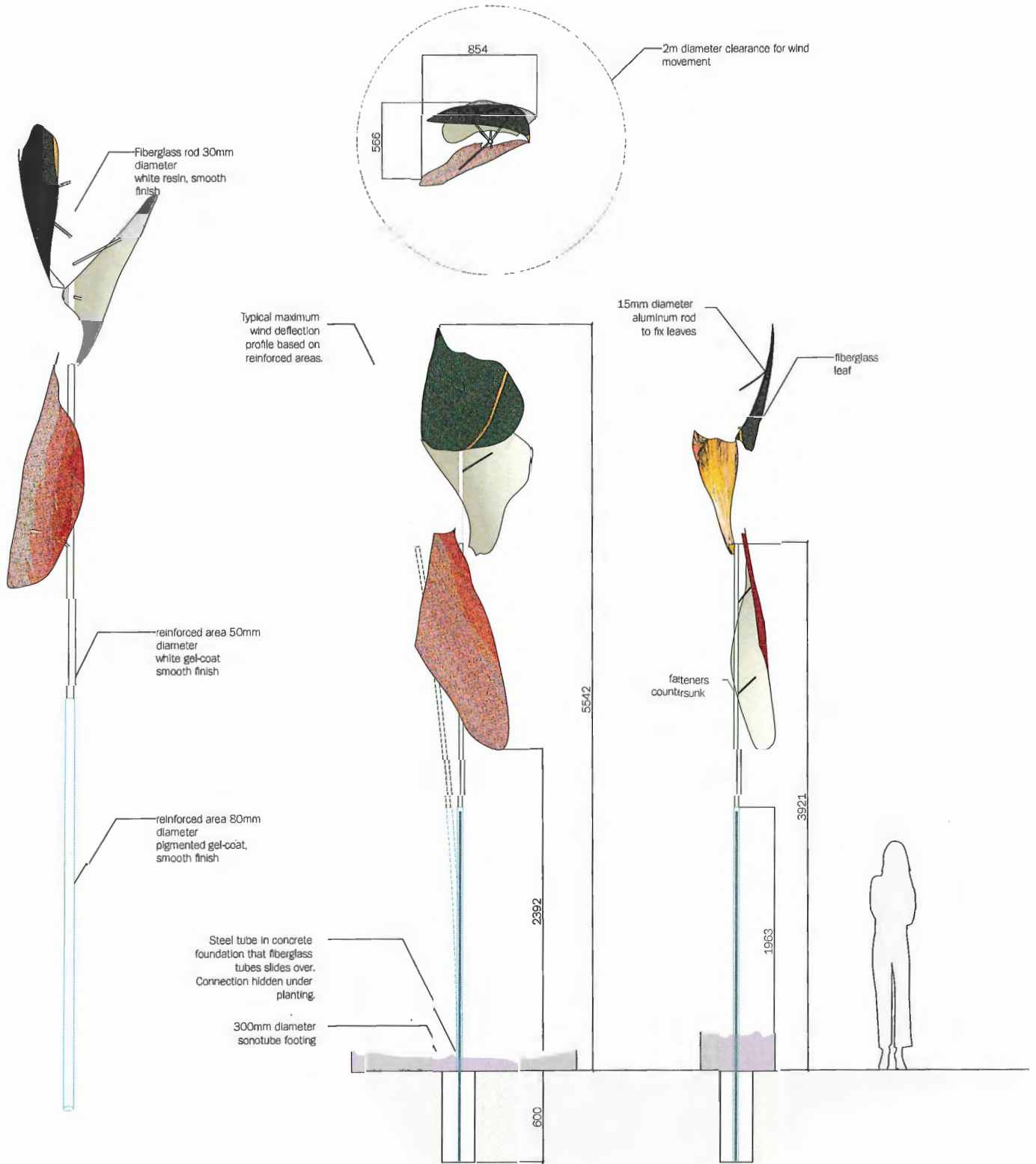
### CALIBRATING THE WIND FLOWERS

Wind Flowers will be a maximum height of 20'. The final heights will be determined by the final site locations, engineering, and sculptural design. The Wind Flowers have a rigid base to support an upper section that can softly bend and sway with the natural elements (wind), without human intervention.

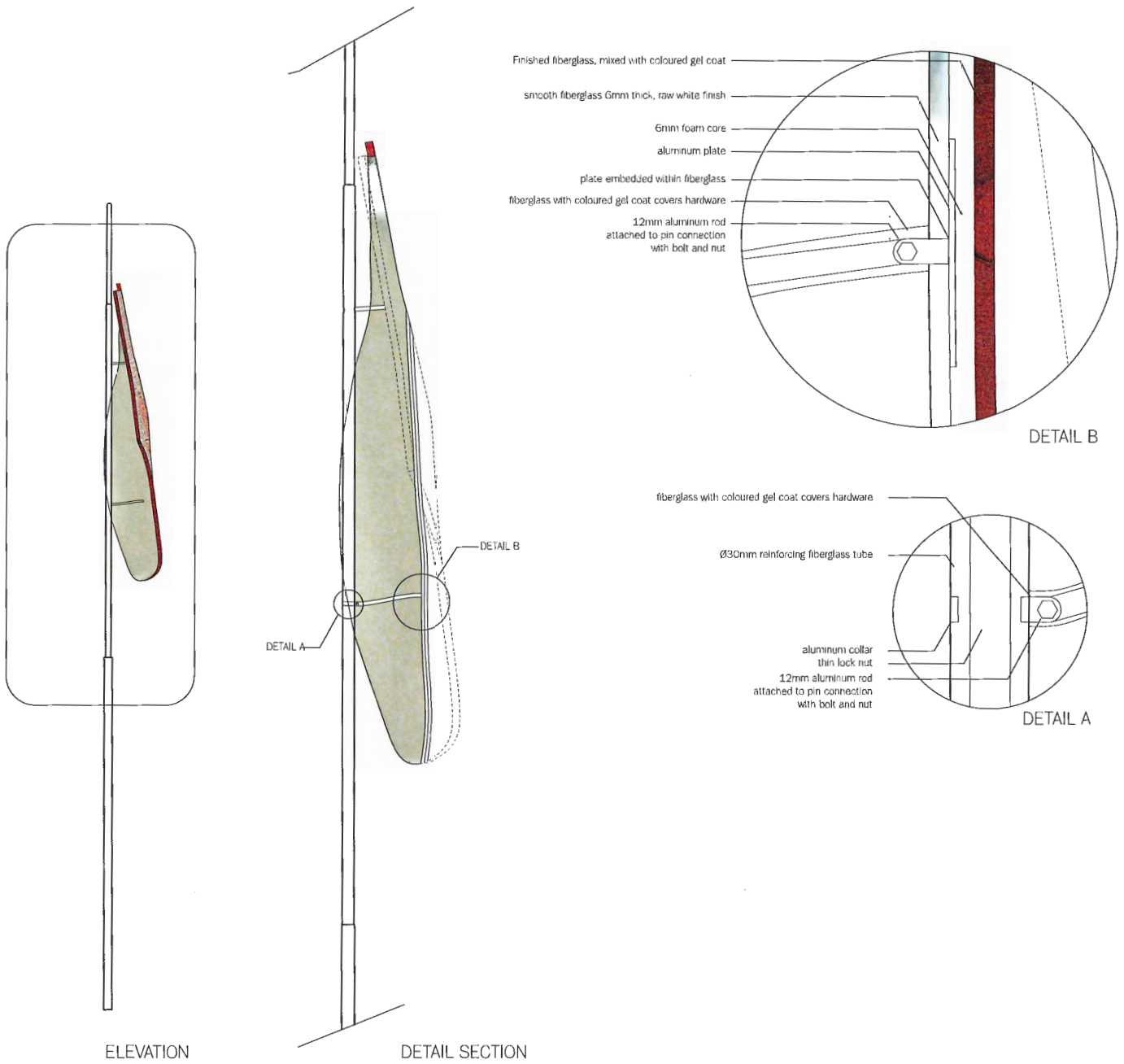
The strength and diameter of the Wind Flower 'stems' will be calibrated to balance the form and dimensions of the 'petals'. Using a consistent fiberglass rod, dimensions can be engineered and controlled, and modifications can be made as required by winding additional fiberglass sheets around the 'stems'.

The uniquely coloured and finished fiberglass components of the art work use a sympathetic texture and colour palette to Richmond. Proposed primary materials will include raw fiberglass and coloured gel-coat with various admixtures. The finish will be robust and easy to repair if damaged. The colour will be integral to the resin used, rather than applied as a coating or paint.

# DETAILS OF CONSTRUCTION



# DETAILS OF CONSTRUCTION



**PROJECT DEVELOPMENT.**

---

**COMMUNITY ENGAGEMENT .**

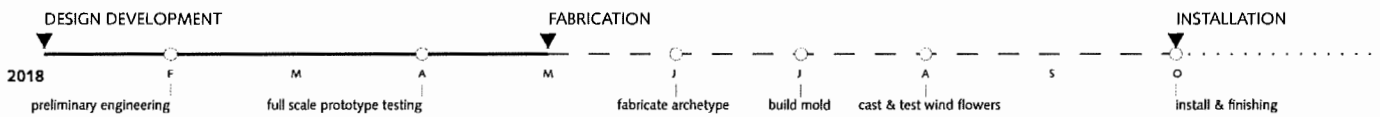
**ART + ECOLOGY COMMUNITY DESIGN CHARETTE**

A community workshop is proposed to be held in Spring 2018. The workshop would provide an opportunity for local residents to learn more about the rich ecology of Richmond, as the city prepares a new piece of art: a gateway to the ecological network of the city. The artists will introduce the intentions behind the work and ask the community to share stories and ideas about what Richmond’s local environment means to them.

A family-friendly hands-on art-making activity will be offered, where the artists will invite community members to physically create arts and craft models of their answers to the question: how can we choreograph with nature?

**SCHEDULE .**

- Design Development: 3 - 4 months
- Fabrication: 4 - 6 months
- Installation: Fall 2018



**PRELIMINARY BUDGET .**

The preliminary budget allows for 17 ‘wind flowers’ to be fabricated and installed.

Public Art Budget	\$300,000
Artist Fee	\$30,000
Legal & Insurance Fees	\$1,500
Disbursements [incl. storage & fabrication space]	\$8,500
Prototype Models & Supplies	\$17,000
Sub-Consultants	\$26,000
Fabrication + Installation [including labour]	\$105,000
Landscape Amendments	\$60,000
Lighting	\$10,500
Project Documentation & Maintenance Report	\$1,500
Contingency	\$40,000

## ARTIST TEAM

---

### ARTISTS .

Atelier Anonymous (Alyssa Schwann, Jan Haenraets, Beryl Allen)

[www.atelier-anon.com](http://www.atelier-anon.com)

Michael Seymour .

### TEAM .

Fabrication	Stuart's Yacht Renovations (Stuart Towell)
Structural Engineer	ASPECT Structural Engineers (Bernhard Gafner)
Wind Engineer	Gradient Wind Engineering (Vince Ferraro)
Composite Engineer	Advanced Dynamics Design Group (Gavin Erickson)
Heritage Consultant	Isaac Vanderhorst

