



City of Richmond

Report to Committee

To: General Purposes Committee

Date: October 16, 2018

From: John Irving, P.Eng. MPA
Director, Engineering

File: 10-6125-30-007/Vol 01

Re: WesPac Tilbury Marine Jetty Project – Application Comments for the British Columbia Environmental Assessment Process

Staff Recommendation

That the comments regarding the WesPac Tilbury Marine Project Environmental Assessment Application to the BC Environmental Assessment Office for the proposed Liquefied Natural Gas Birthing and Loading Facility identified in the “WesPac Tilbury Marine Jetty Project – Application Comments for the British Columbia Environmental Assessment Process” report dated October 16, 2018, from the Director, Engineering, be endorsed for submission to the BC Environmental Assessment Office.

John Irving, P.Eng. MPA
Director, Engineering
(604-276-4140)

Att. 2

REPORT CONCURRENCE	
CONCURRENCE OF GENERAL MANAGER 	
REVIEWED BY STAFF REPORT / AGENDA REVIEW SUBCOMMITTEE	INITIALS:
APPROVED BY CAO 	

Staff Report

Origin

During the Regular Council Meeting held on June 22, 2015 it was resolved that Richmond City Council requests a full federal Environmental Assessment and review of the Delta Liquefied Natural Gas project to consider:

1. Effects on dredging a deeper wider shipping channel;
2. Effects on diking;
3. Effects on the habitat of the estuary and the Fraser River fishery; and
4. Safety concerns, climate change and the industrialization of the Fraser River Estuary due to the cumulative effect of coal, jet fuel, LNG and possibly oil shipments on the Fraser River;

and that copies of the resolution be sent to neighboring municipalities, and local MPs and MLAs.

Staff acted accordingly since 2015 to present the City's concerns through participation in the Working Group and Council was subsequently updated through multiple memoranda.

Staff received a letter dated October 12, 2018 from Wespac Midstream – Vancouver LLC (WesPac) indicating that a copy of the the Environmental Assessment Certificate Application for its proposed WesPac Tilbury Marine Jetty Project (Project) was available for review by the City as part of the legislated 30-day screening period pursuant to the BC *Environmental Assessment Act*.

This report supports Council's 2014-2018 Term Goal #6 Quality Infrastructure Networks:

Continue diligence towards the development of infrastructure networks that are safe, sustainable, and address the challenges associated with aging systems, population growth, and environmental impact.

6.1. Safe and sustainable infrastructure.

The purpose of this report is to seek Council's endorsement of staff comments on the completeness of the application to be sent to the BC Environmental Assessment Office.

Background

The Project is located in the South Arm of the Fraser River on Tilbury Island in the City of Delta (Attachment 1). Although the project has no operating footprint within the City of Richmond, the Project will increase shipping traffic in the South Arm of the Fraser River.

The Project will support the delivery of liquefied natural gas (LNG) to foreign markets supported by the recent expansion of a pre-existing FortisBC LNG Facility. The Project consists of the following components:

- Marine Jetty
- LNG Transfer System
- On shore LNG Pipeline Connecting Storage Tank and Jetty
- Closed-loop Boil Off Gas Management System
- Process Control and Power Supply Systems
- Fire Protection and Emergency Systems
- Project Access (access road and parking)

The Project requires a federal environmental assessment under the *Canadian Environmental Assessment Act* as the project is designed to receive vessels larger than 25,000 DWT (deadweight tonnes). The project also requires a provincial environmental assessment under BC's *Environmental Assessment Act* as the project exceeds the maximum dredging threshold of two (2) hectares. The Federal Minister of the Environment approved the BC Environmental Assessment Office (BC EAO) to lead a substituted assessment on behalf of the Canadian Environmental Assessment Agency.

Wespac Midstream – Vancouver LLC (WesPac) submitted a Project Description for the Project to the BC EAO and the Canadian Environmental Assessment Agency on April 30, 2015. Stakeholder consultation began in May 2014 with a series of public and governmental agency meetings undertaken by Wespac to introduce the Project. In addition, two open houses were led by the BC EAO to provide the public with opportunities to review and comment on the Project. These occurred in Delta on December 2, 2015 and in Richmond on December 3, 2015.

A draft Application Information Requirements document was submitted by WesPac to the BC EAO in 2015 and was approved on November 26, 2016. Canada's National Energy Board issued WesPac a licence to export natural gas from Canada on May 26, 2016. The licence permits WesPac to export a maximum annual volume of 4.76 billion cubic metres of natural gas and was issued for a 25-year term.

WesPac retained the services of a Qualified Environmental Professional to collect baseline data and prepare the Project's Environmental Assessment Certificate Application (Application). Baseline data was collected in 2015, 2017 and 2018 in anticipation of submitting the Application to the BC EAO in fall 2018.

Analysis

The Project has been modified from a single berth to a tandem birth configuration since 2016 (Attachment 2). The modifications are proposed to allow for improvements to vessel transfer capacity, vessel approach routes and vessel departure routes and are not intended to increase traffic volume.

WesPac has circulated an Application to the BC EAO and the Working Group for review and comment, which initiated the legislated 30-day screening period that is anticipated to expire on November 16, 2018. The purpose of screening is to determine whether the Application contains the information outlined in the Application Information Requirements document in sufficient detail that BC EAO can undertake a more detailed review of the Application and conclude on the significance of potential adverse effects.

Staff Comments

Staff assessed WesPac's Application for completeness based on the City's concerns and recommend the following comments be endorsed by Council to support the application screening period:

1. That the City's flood protection infrastructure (dikes and drainage pump stations) be included as a Valued Component, as changes in river processes may have a profound effect on the morphology of the river bed, and in turn the stability of the existing and future dikes;
2. That a liquefaction and geotechnical analysis be done to quantify the effects of dredging on the City's existing and future dikes;
3. That the cumulative effects of all modifications occurring in the Fraser River is quantified; and
4. That the Provincial requirements for Climate Change mitigation be included in the review.

Next Steps

The BC EAO will collect all of the stakeholder information within 30 days to determine if WesPac's Application is complete. If the Application is deemed acceptable for review by the BC EAO, the Project will enter the legislated 180-day review stage of the BC *Environmental Assessment Act*. During this phase, the City will have the opportunity to review the technical information in greater detail and submit additional comments and/or information request regarding the Project to the BC EAO.

Financial Impact

None.

Conclusion

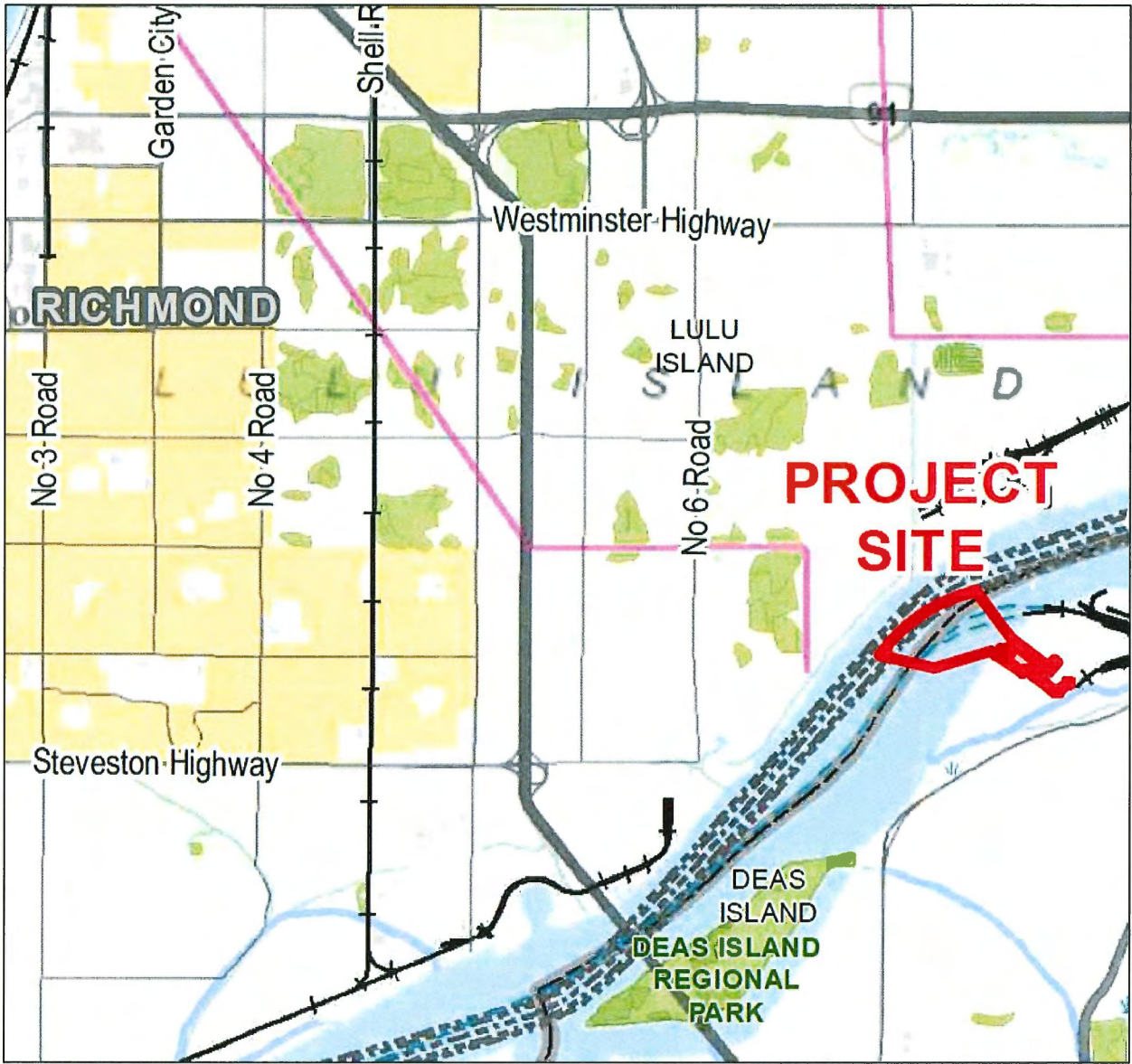
The BC EAO deadline for screening is November 16, 2018. Staff recommend that Council endorse the comments in this report for submission to the BC EAO.



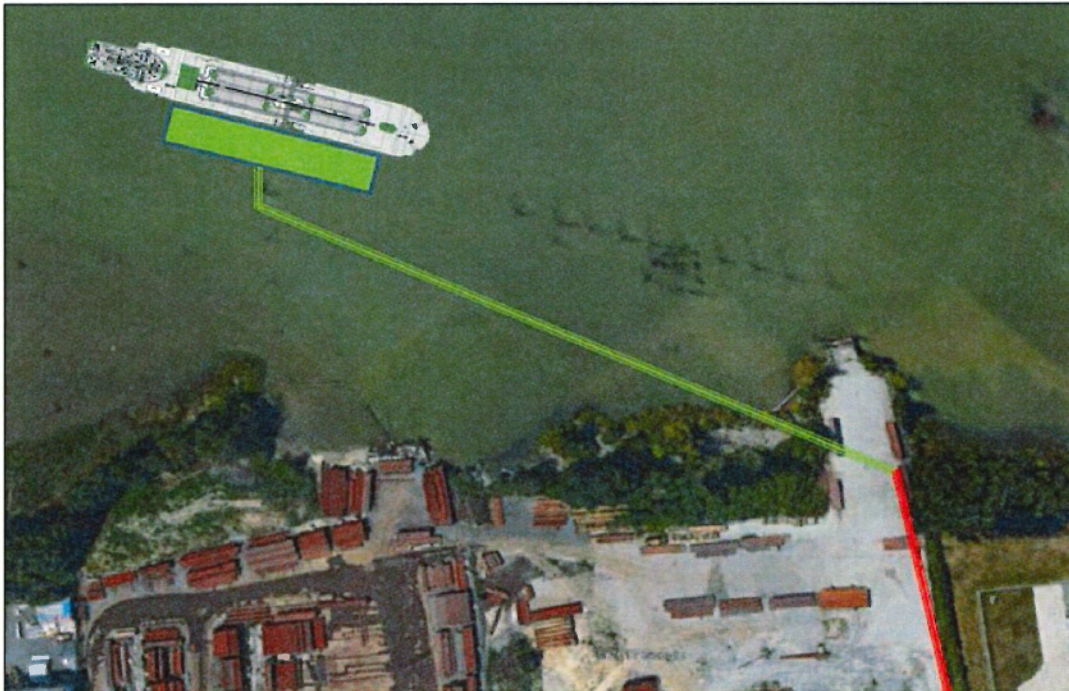
Chad Paulin
Manager, Environment
(604-247-4672)

Att. 1: WesPac Tilbury Marine Jetty Project Map
Att. 2: WesPac Tilbury Marine Jetty Project Configuration

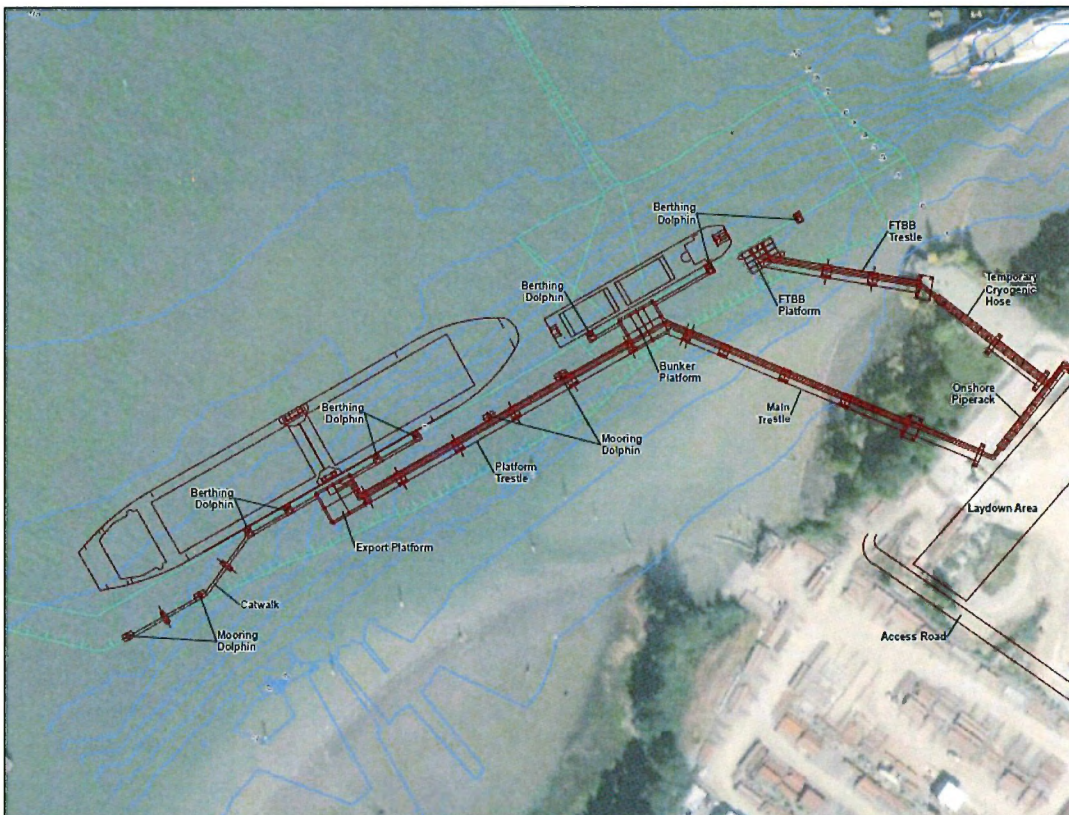
Attachment 1: WesPac Tilbury Marine Jetty Project Map



Attachment 2: WesPac Tilbury Marine Jetty Project Configuration



Original Jetty design with one main berth



2018 Project design with two berths. One primary berth for large vessels and one for smaller vessels.