



City of Richmond

Report to Committee

To: Parks, Recreation and Cultural Services Committee **Date:** July 9, 2018

From: Jane Fernyhough, Director, Arts, Culture and Heritage Services **File:** 11-7000-09-20-129/Vol 01

Re: **Tait Waterfront Park Sculptural Pavilion Public Art Concept**

Staff Recommendation

That the concept proposal, *Wake*, for the Tait Waterfront Park by Aaron and Christian Zenga, as presented in the report titled "Tait Waterfront Park Sculptural Pavilion Public Art Concept" dated July 9, 2018, from the Director, Arts, Culture and Heritage Services, be endorsed.

Jane Fernyhough
 Director, Arts, Culture and Heritage Services
 (604-276-4288)

Att. 3

REPORT CONCURRENCE		
ROUTED TO:	CONCURRENCE	CONCURRENCE OF GENERAL MANAGER
Finance Department	<input checked="" type="checkbox"/>	
Parks Services	<input checked="" type="checkbox"/>	
Recreation Services	<input checked="" type="checkbox"/>	
REVIEWED BY STAFF REPORT / AGENDA REVIEW SUBCOMMITTEE	INITIALS: 	APPROVED BY CAO

Staff Report

Origin

On February 13, 2018, Council endorsed the public art project artist terms of reference for a civic public artwork to be located at Tait Waterfront Park.

This report brings forward the recommended artist concept for the Tait Waterfront Park Sculptural Pavilion as chosen through an arm's-length artist selection process, facilitated by City staff and following procedures outlined in the Public Art Program's Administrative Guidelines.

This report supports Council's 2014-2018 Term Goal #2 A Vibrant, Active and Connected City:

Continue the development and implementation of an excellent and accessible system of programs, services, and public spaces that reflect Richmond's demographics, rich heritage, diverse needs, and unique opportunities, and that facilitate active, caring, and connected communities.

2.1. *Strong neighbourhoods.*

2.3. *Outstanding places, programs and services that support active living, wellness and a sense of belonging.*

2.4. *Vibrant arts, culture and heritage opportunities.*

Analysis

Background

The Tait residential neighbourhood covers an area of 68 ha (168 ac.) and is located south of the North Arm of the Fraser to Bridgeport Road, between Shell and No. 4 Road. The neighbourhood is characterized by single-family homes south of River Drive and multi-family housing closer to the river. It is in close proximity to the Bridgeport Canada Line station.

Terms of Reference – Tait Waterfront Park Sculptural Pavilion Public Art Opportunity

The Call to Artists for the Tait Waterfront Park Sculptural Pavilion describes the art opportunity, themes, site description, scope of work, budget, selection process, schedule and submission requirements. Eligibility was for professional artists residing in British Columbia and Alberta (Attachment 1). The Call was issued on March 12, 2018 and closed on April 3, 2018.

Community Programming and Engagement

The Sculptural Pavilion will function as a picnic shelter and provide shade and protection from inclement weather for park users. The sheltered space will provide an opportunity for nearby Cambie Community Centre to activate the space with a pilot program of daytime activities and workshops from spring to fall, beginning in 2019. A variety of health and wellness activities and workshops will be offered to welcome new residents into the park and to encourage multigenerational cross-cultural exchanges and community building. A monitored community

bulletin board and secure storage unit will be provided on-site to facilitate and support community engagement programming.

Artist Selection Process

During the first stage of the process, 19 submissions by artists from British Columbia and Alberta were received. On April 9, 2018, following the Public Art Program's administrative procedures for artist selection for civic public art projects, a selection panel reviewed the submissions.

Members of the selection panel included:

- Daniel Laskarin, professional artist and educator;
- Julie York, professional artist and educator;
- Irfan Sonowala, Dava Developments Ltd;
- Imu Chan, professional architect; and
- Mark McCallum, Principal, Tait Elementary School.

City staff and the landscape architect of record for Tait Waterfront Park attended the selection panel meeting to provide project background and to answer any questions regarding the park design and City administrative processes.

Following discussion and deliberation, the panel shortlisted four artists to attend a finalist interview and provide a presentation on their artist concept.

The shortlisted artists were:

- Mark Erickson / Studio North, Calgary, AB;
- Aaron and Christian Zenga, Vancouver, BC;
- Michael Yahgulanaas / Y Public Art, Vancouver, BC; and
- Illarion Gallant, Victoria, BC.

The shortlisted artists responded to the theme "Anchors, Ties and Settlements", in acknowledgement of Richmond's maritime and agrarian heritage and its rapidly growing culturally diverse population. Artists were invited to explore innovative and imaginative ways to combine art and design approaches to create a safe and accessible Sculptural Pavilion for all ages and abilities.

On May 7, 2018, the selection panel met to interview the four shortlisted artists and artist teams. Following a thoughtful and considered deliberation, the panel recommended Aaron and Christian Zenga's artist concept for the Tait Waterfront Park Sculptural Pavilion. The selection panel was impressed with the artists' concept and its ability to infuse creative expression through symbolic and sculptural representations of water, while maintaining clear and unobstructed space and sight line requirements.

Recommended Artists

Aaron and Christian Huizenga are an interdisciplinary artist team based in Vancouver. The artists are experienced craftsmen working with a variety of materials. Their unique functional artworks are intricately fabricated and have been successfully installed around public sites in Metro Vancouver.

Recommended Artist Concept, "Wake"

The artist concept, *Wake*, is designed as an inclusive space for a diverse range of uses. The proposed pavilion minimizes visual and physical barriers, and maximizes the kinds of activities that can take place within and around it. The low-impact post system creates the effect of a buoyant roof structure with intersecting forms to create apertures for natural light to illuminate the covered space beneath. Overhead, the cedar rafters comprise a twisting form to animate the underside of the roof for users of the pavilion. Powder-coated aluminum panels rise and fall, suggesting the undulating waves of the Fraser River (Attachment 2).

The artists describe the proposed concept as follows:

"Wake aims to articulate a multi-use community space that not only provides shelter, but aims to bring a playful dynamism to the Tait Waterfront Park and neighbourhood."

On May 8, 2018, the Public Art Advisory Committee reviewed the concept proposal and endorsed the project (Attachment 3). Comments and feedback from the Committee referenced durability and maintenance of materials, risk-management and safety issues, and maintaining a clear and unobstructed space beneath the pavilion to accommodate a wide variety of programming uses.

A technical review and coordinating phase with City staff and the project landscape architect will be included with the design development phase of the artwork.

Financial Analysis

The proposed project budget is funded from the 2015 Public Art Capital Budget. The budget of \$130,000 is provided to the artists for the design, professional engineering fees, insurance, administration, fabrication and installation of the artwork, including all related artist expenses. An additional \$20,000 construction credit from Dava Developments Ltd. for the original specified proprietary picnic shelter will be provided for site preparation, foundation construction and finished paving. The ongoing maintenance for this artwork will be the responsibility of the Public Art Program, from existing funds set aside for maintenance.

Financial Impact

None.

Conclusion

The Tait Waterfront Park Sculptural Pavilion is a functional public artwork, serving as an open-air picnic shelter and community gathering space. The project will support local community place-making initiatives and contribute to creating a culturally rich environment in a rapidly growing vibrant and sustainable city.



Biliana Velkova
Public Art Planner
(604-247-4612)

- Att. 1: Tait Waterfront Park Sculptural Pavilion, Call to Artists
- 2: Artist Concept for *Wake*
- 3: Richmond Public Art Advisory Committee Minutes

call to artists

PUBLIC ART
RICHMOND



Tait Waterfront Park Sculptural Pavilion

Request for Proposals, RFP

March 2018

Figure 1. Aerial photograph of Tait Elementary School, showing playing fields and surrounding Tait Neighbourhood, ca1977, City of Richmond Archives, Photograph #1978 26 168

OPPORTUNITY

The Richmond Public Art Program is seeking an artist, artist team or artist-led design team to create a sculptural pavilion for the new Tait Waterfront Park. The artwork will function as a picnic shelter that may also accommodate other formal and informal community-based activities and programming such as yoga, tai-chi and performing arts events. The civic artwork will be located in a prominent location near the entrance to Tait Waterfront Park at 10211 River Drive.

This is a two-stage open artist call. Following review of the submissions, the Selection Panel will recommend up to three artists to be shortlisted. Shortlisted artists will be invited to develop concept proposals and attend an interview. An interview fee of \$1,000 will be paid to each of the shortlisted artists or artist teams. All information about the opportunity is contained herein.

- Artist Fee:** \$130,000 CAN
- Eligibility:** Artists residing in British Columbia and Alberta
- Deadline:** Tuesday, April 3, 2018, 5:00 p.m. PST
- Completion:** Spring 2019

call to artists

PUBLIC ART
RICHMOND

BACKGROUND

The Tait residential neighbourhood covers an area of 68 ha (168 ac.) and is located south of the North Arm of the Fraser River to Bridgeport Road, between Shell Road and No.4 Road. The neighbourhood is characterized by single-family homes close to Bridgeport Road and multi-family housing closer to the river and is in close proximity to the Bridgeport Canada Line station.

Much of the land was originally subdivided in the mid-1940s under the Veterans Land Act to house servicemen and women returning from World War II. The Veterans Land Act (VLA), established in 1942, provided housing and provisions of small holdings for part-time farmers. There were a number of VLA subdivisions in Richmond including Thompson, Cora Brown, Tait, Gray and Grauer. The Tait, Gray and Grauer subdivisions were built in 1945 by the Bennett & White Construction Company. Today, most of these areas have had their density increased by infill housing, although the occasional large lot is still in existence. These early, low-density subdivisions were the precursor to Richmond's suburban development in the 1950's. The area is also impacted by aircraft noise due to its proximity to the Vancouver International Airport.

The new Tait Waterfront Park will enhance the liveability of the community and contribute to the provision of amenities including Tait Neighbourhood School and Park, Cambie Community Centre and a new child care centre as part of the proposed residential development east of the park.

TAIT WATERFRONT PARK DESIGN

The design for the park is inspired by its location at the edge of the Fraser River. Meandering pathways with sturgeon imprints, "log jam" play structures and landscape plantings will combine to emphasize the natural character of the site's context. A variety of uses and features are proposed, including an open lawn and picnic area, basketball/multi-use hard surface courts and a play-scape environment. Pathways will provide multiple access points from River Drive and the dike trail. Primary pathways will be accessible and secondary, exploratory pathways will connect the various features of the park together. To provide shade and comfort during the summer, deciduous shade trees of various types will be strategically placed around the park. Other planting will be used to increase biodiversity and create habitat for wildlife.

PUBLIC ART OPPORTUNITY

The new Tait Waterfront Park will offer an artist or artist team the opportunity to design, fabricate and install a sculptural pavilion to function as a picnic shelter and be suitable for outdoor group activities such as tai-chi, yoga and other types of fitness and community activities. The sculptural pavilion will provide nearby Cambie Community Centre with an outdoor space to provide daytime programming during spring, summer and fall. City staff will engage in exploratory discussions with other community organizations and schools to determine interest and feasibility for satellite programming opportunities.

call to artists

PUBLIC ART
RICHMOND

THEME: “ANCHORS, TIES AND SETTLEMENTS”

The theme “Anchors, Ties and Settlements” acknowledges Richmond's maritime and agrarian heritage and its growing culturally diverse population. Artists are invited to explore innovative ways to create safe and socially inclusive spaces for intergenerational users and individuals with special needs. In addition, artists are encouraged to visit the site and conduct research to understand the geographical and cultural characteristics of the site, neighbourhood and its relationship to the city.

LOCATION

The sculptural pavilion will be located close to the park entrance at McLennan Avenue and River Drive, and will act as a gateway landmark and prominent gathering space for this new residential community. The selected artist will work with design consultants and staff to determine the artwork's exact location and requirements for site preparations.

BUDGET

A total budget of up to \$130,000 CAD, plus applicable taxes is available for this project. This budget will include (but is not limited to) artist fees, design, permitting as required, engineering fees, fabrication, photography, insurance and all applicable taxes (GST excluded). An additional budget of up to \$20,000 will be provided for site preparation. Shortlisted artists will be required to provide a detailed budget as part of their second stage submission package.

DESIGN CONSTRAINTS

The sculptural pavilion shall cover a minimum area of 800 square feet. Artists will be required to work with long-lasting materials that are durable and low maintenance. Consideration must be given to the pedestrian and vehicular experiential approaches from River Drive and McLennan Avenue, and the relationship of the pavilion to the open lawn area of the park.

ARTIST ELIGIBILITY

This opportunity is open to artists or artist teams residing in British Columbia and Alberta. Qualified artists will have proven experience producing artworks of similar scale. City of Richmond staff, Public Art Advisory Committee members, selection panel members, project personnel, immediate family members and artists who are currently contracted by the Public Art Program are not eligible to apply.

SELECTION PROCESS

A selection panel will review submissions and recommend the artist/artist team through a two-stage open call process. For stage one, artists are asked to submit a preliminary idea or approach for the site. For stage two, up to three artists will be invited to attend an artist orientation session, prepare a detailed concept design, detailed project budget and attend a finalist

call to artists

PUBLIC ART
RICHMOND

presentation and interview. An artist fee of \$1,000, including all taxes, but excluding GST, will be paid to each of the shortlisted artists or artist teams.

Finalists outside of Greater Vancouver will be reimbursed for travel and lodging expenses up to \$750 to attend the interview in Richmond. If applying as a team, travel reimbursement will only allow for one member of the team to attend the interview in person. Other members can attend at their own expense or via Skype or telephone conference.

At the end of the second stage selection process, the selection panel will recommend one artist or artist team concept proposal to City Council for approval. Supplemental information from the selected artist may be required by City staff prior to presentation to Council.

ARTIST SELECTION CRITERIA

The following criteria will inform the artist selection process:

Stage 1

- Artistic merit of Artist Statement of Intent in response to project theme and goals.
- Artist's demonstrated qualifications, skills and experience of past work.
- Ability of the artwork to respond to the existing character of the site by taking into account scale, colour, material, texture and geographical, social and cultural context of the location.
- Artist's capacity to work with other design professionals and stakeholders.
- Appropriateness of the proposal to the Public Art Program goals: www.richmond.ca/culture/publicart/plans/policy.

Stage 2

- Artist response to any feedback and follow-up questions from Selection Panel regarding artistic merit of Artist Statement of Intent and Conceptual Artist Sketch in response to project theme and goals.
- Artist response to any feedback and follow-up questions from Selection Panel regarding ability of the artwork to respond to the existing character of the site by taking into account scale, colour, material, texture, content and the physical characteristics of the location.
- Artist response to any feedback and follow-up questions from Selection Panel regarding appropriateness of the proposal to the Public Art Program goals: www.richmond.ca/culture/publicart/plans/policy.
- Detailed project budget including, but not limited to: artist fees, materials, fabrication, administration, insurance, installation, documentation, permits and consultant fees.
- Project Timeline, including project start in June and completion by spring 2019.

call to artists

PUBLIC ART
RICHMOND

- 3D artist visualizations and/or models to communicate how the artwork will respond to the site including scale, colour, material, texture, content, installation method and the physical characteristics of the location.
- Artwork sensitivity to environmental concerns with respect to artwork materials and method of fabrication and installation.

SUBMISSION REQUIREMENTS

E-mail all documentation as one (1) PDF document, not to exceed a file size of 5 MB to: publicart@richmond.ca

- INFORMATION FORM – Please complete the information form attached to this document.
- STATEMENT OF INTENT – 300 words or less, explaining conceptual approach to the work, why the artist is interested in this opportunity and how the project responds to the selection criteria.
- ARTIST CV – (1 page maximum). Teams should include one page for each member.
- WORK SAMPLES – 10 supporting image samples of previous work. One image per page. Please include artist name(s), title, year, location and medium information to be on each image page.
- REFERENCES – Three references who can speak to your abilities, skills and accomplishments. Please provide name, title and contact telephone number and/or email. Reference letters are not required. Teams should include two references for each member.

PROJECT TIMELINE

Submission Deadline:	April 3, 2018, 5:00 p.m. PST
Finalist Notifications:	April 10, 2018
Short-listed Artists Orientation:	April 12, 2018, 5:30-6:30 p.m.*
Artist Interviews:	May 7, 2018, from 5:30 p.m. *
Completion:	Spring 2019

* Applicants shall reserve this date in their calendar. Meetings will take place at Richmond City Hall, 6911 No.3 Road.

SOURCES FOR ADDITIONAL INFORMATION

- [CITY OF RICHMOND PARKS AND RECREATION](#)
- [CAMBIE COMMUNITY CENTRE](#)
- [TAIT ELEMENTARY SCHOOL](#)
- [CITY OF RICHMOND ARCHIVES](#)

call to artists

PUBLIC ART
RICHMOND

SUBMISSION GUIDELINES

1. All supporting documents must be complete and strictly adhere to these guidelines and submission requirements (above) or risk not being considered.
2. All submissions must be formatted to 8.5 x 11 inch pages. Portfolio images and concept sketches would be best formatted to landscape format.
3. Submission files must be 5 MB or smaller.
4. If submitting as a team, the team should designate one representative to complete the entry form. Each team member must submit an individual resume/curriculum vitae. (See Submission Requirements)
5. All documents must be sent by e-mail to: publicart@richmond.ca

ADDITIONAL INFORMATION

1. The selected artist will be required to comply with WCB coverage requirements and \$5,000,000 general liability insurance.
2. Please be advised that the City and the selection panel are not obliged to accept any of the submissions and may reject all submissions. The City reserves the right to reissue the Artist Call as required.
3. All submissions to this Artist Call become the property of the City. All information provided under the submission is subject to the Freedom of Information and Protection of Privacy Act (BC) and shall only be withheld from release if an exemption from release is permitted by the Act. The artist shall retain copyright in the concept proposal. While every precaution will be taken to prevent the loss or damage of submissions, the City and its agents shall not be liable for any loss or damage, however caused.
4. Extensions to the deadline will not be granted under any circumstances. Submissions received after the deadline and those that are found to be incomplete will not be reviewed.

QUESTIONS

Please contact the Richmond Public Art Program:

Tel: 604-204-8671

E-mail: publicart@richmond.ca

call to artists

PUBLIC ART
RICHMOND



Figure 1. Proposed Site Plan for Tait Waterfront Park showing general location of the public artwork.

call to artists

PUBLIC ART
RICHMOND

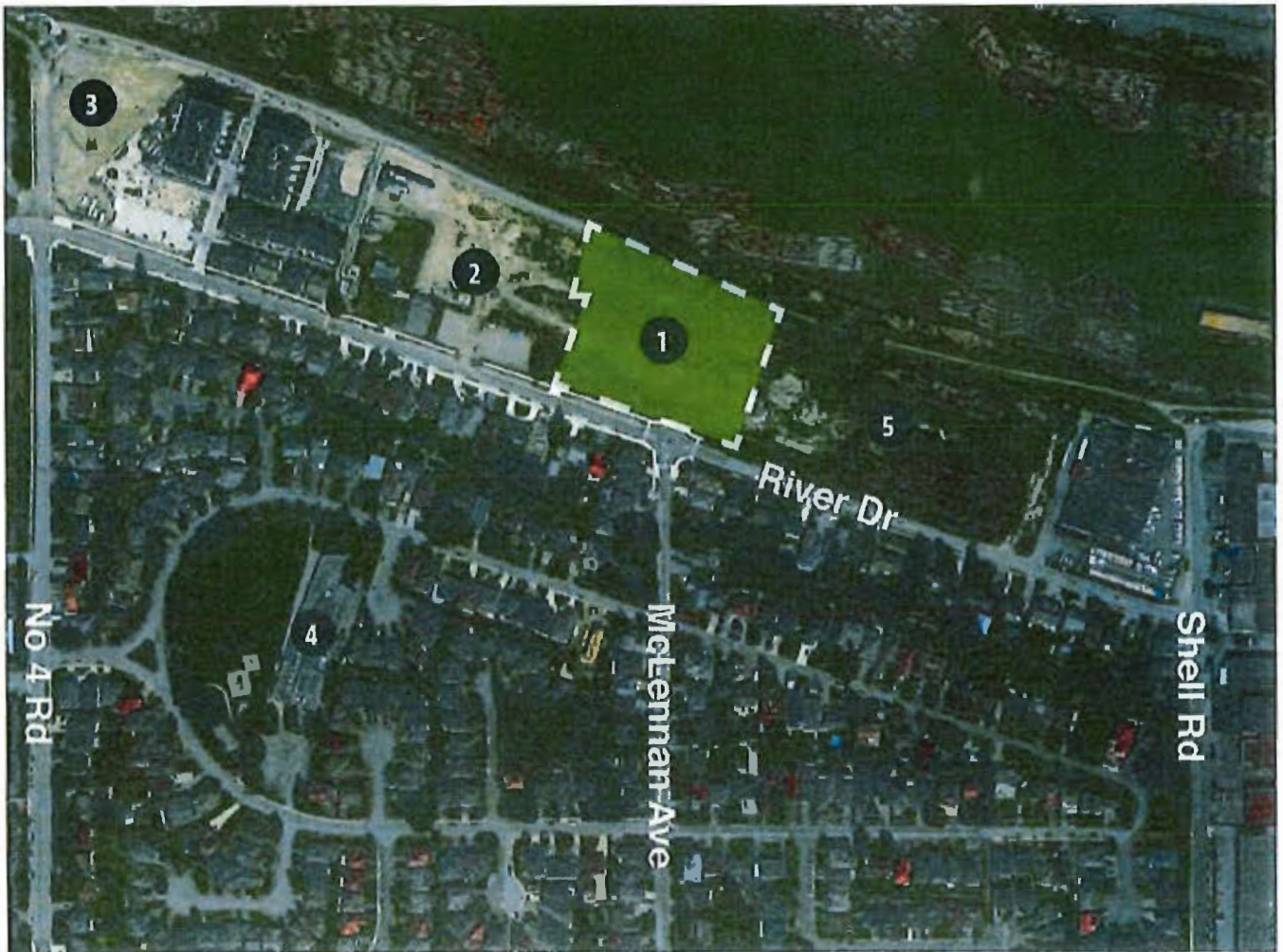


Figure 2 – Context Map and Location of Tait Waterfront Park. 1)Tait Waterfront Park, 2) Future Town Homes, 3) West Park, 4) Tait Elementary School, 5) Future Development

call to artists

PUBLIC ART
RICHMOND

TAIT WATERFRONT PARK SCULPTURAL PAVILION

Attach one (1) copy of this form as the first page of the submission.

Name: _____

Team Name: (if applicable) _____

Address: _____

City: _____ Postal Code: _____

Primary Phone: _____ Secondary Phone: _____

E-mail: _____ Website: _____
(One website or blog only)

Incomplete submissions will not be accepted. E-mailed submissions over 5 MB will not be accepted. Information beyond what is listed in the checklist will not be reviewed.

List Team Member Names: (Team Lead complete above portion)

Please let us know how you found out about this opportunity:

Would you like to receive direct e-mails from the Richmond Public Art Program? Yes No

Signature: _____ Date: _____

Submit applications by e-mail to: publicart@richmond.ca

Additional Information

Please be advised that the City and the selection panel are not obliged to accept any of the submissions and may reject all submissions. The City reserves the right to reissue the RFP as required. All submissions to this RFP become the property of the City. All information provided under the submission is subject to the Freedom of Information and Protection of Privacy Act (BC) and shall only be withheld from release if an exemption from release is permitted by the Act. The artist shall retain copyright of the submitted documents. While every precaution will be taken to prevent the loss or damage of submissions, the City and its agents shall not be liable for any loss or damage, however caused.

Artist Concept For *Wake*

By Aaron and Christian Zenga



Figure 1 – Artist three-dimensional rendering of *Wake*.



Figure 2 – Artist three-dimensional rendering of *Wake* in an imagined park setting.



Figure 3 – Artist rendering illustrating health and wellness-based programming for local community members.



Figure 4 – Artist rendering of *Wake* from River Road park entrance.

Richmond Public Art Advisory Committee Minutes (excerpt)
Tuesday, May 8, 2018

TAIT WATERFRONT PARK PAVILION CONCEPT PROPOSAL

Elisa Yon presented the recommended concept proposal from a two-stage selection process for a sculptural pavilion. Ms. Yon presented the site plan, selection panel and recommended artwork. It was noted that this will be a public picnic shelter that will be used as a satellite space for other programming (by Cambie Community Centre). This covered space will be used to pilot health and wellness-type activities.

The selection panel met in April and shortlisted several artists, of which, one was chosen. The Committee looked at the concept proposal for the selected artist. Members discussed the piece including the internal posts posing an issue, the open apertures allowing light to penetrate the space, rain chains posing a possible risk for climbing and possible bulletin board and storage being incorporated into the space. It was noted that plexi glass may be put into the apertures to keep rain out. Discussion ensued on plantings and maintenance. It was noted that the next stage will be working with the artist and the landscape architect. This space may potentially be used for concerts as well, and it was recommended to consider a slope to create an amphitheatre for this use. The scale of this piece will be between 8 and 14 feet.

Members discussed why this structure is so close to the road and not closer to the park. Members discussed potential factors such as crime prevention through environmental design.

It was moved and seconded

That the Richmond Public Art Advisory Committee support the selection panel's recommendation.

CARRIED