



City of Richmond

Report to Committee

To: Parks, Recreation and Cultural Services Committee
From: Jane Fernyhough
Director, Arts, Culture and Heritage Services
Date: November 27, 2017
File: 11-7000-09-20-089/Vol 01
Re: 2018 Engaging Artists in Community Public Art Projects

Staff Recommendation

That the concept proposals and implementation for the community public art projects at Hamilton McLean Neighbourhood Park, Minoru Arenas and Britannia Shipyards National Historic Site as presented in the staff report titled "2018 Engaging Artists in Community Public Art Projects," dated November 27, 2017, from the Director, Arts, Culture & Heritage Services, be endorsed.

Jane Fernyhough
Director, Arts, Culture and Heritage Services
(604-276-4288)

Att. 4

REPORT CONCURRENCE		
ROUTED TO: Finance Department Facility Services Parks & Recreation	CONCURRENCE <input checked="" type="checkbox"/> <input checked="" type="checkbox"/> <input checked="" type="checkbox"/>	CONCURRENCE OF GENERAL MANAGER
REVIEWED BY STAFF REPORT / AGENDA REVIEW SUBCOMMITTEE	INITIALS: CJ	APPROVED BY CAO

Staff Report

Origin

The City's Community Public Art Program creates opportunities for collaborative art projects working with community associations, schools, community groups and professional artists of all disciplines. Working with a professional artist, community project stakeholders are involved in all stages of planning and commissioning of a public art project.

This report brings forward for consideration three project proposals by the artists recommended for the three opportunities working in partnership with Hamilton Community Association, Richmond Arenas Community Association (RACA) and Britannia Shipyards National Historic Site.

This report supports Council's 2014-2018 Term Goal #2 A Vibrant, Active and Connected City:

Continue the development and implementation of an excellent and accessible system of programs, services, and public spaces that reflect Richmond's demographics, rich heritage, diverse needs, and unique opportunities, and that facilitate active, caring, and connected communities.

2.1. *Strong neighbourhoods.*

2.3. *Outstanding places, programs and services that support active living, wellness and a sense of belonging.*

2.4. *Vibrant arts, culture and heritage opportunities.*

Analysis

Background

On January 9, 2017, Council endorsed the 2017 Engaging Community and Public Art Projects. Two artists were selected as a result of the artist selection processes: Catrina Megumi Longmuir for the Minoru Seniors Society and Pierre Leichner for the Thompson Community Association.

As the successful implementation of the 2017 Engaging Community and Public Art Pilot Projects came to a close, staff solicited interest from other community associations and City partner organizations to participate in the 2018 Engaging Artists in Community Public Art Projects Program. The following organizations came forward with an interest to work with an artist:

- Hamilton Community Association, McLean Park Community Art Project
- Richmond Arenas Community Association, Minoru Arenas Community Art Project
- Britannia Shipyards National Historic Site, Artist in Residence

Terms of Reference

Public Art staff collaborated with other City staff and the associations from the three facilities to develop the terms of reference for the artist call. A series of individual centre profile information sheets were included in the artist call terms of reference to identify three separate artist opportunities. This information assisted artists in choosing and applying for the opportunity that best matched their skills and interests. The artist call provided opportunities for local artists to develop socially oriented practices while working alongside culturally diverse and multi-generational participants and audiences (Attachment 1).

Artist Selection Process

In accordance with the terms of the Public Art Program Administrative Procedures Manual, the Public Art Program issued a call to artists or artist teams residing in British Columbia in September 2017.

Eleven local artists submitted their letters of interest and examples of past work along with their qualifications prior to the deadline on October 17, 2017.

An artist selection process was implemented for each artist opportunity. Submission materials were distributed to the panelists in advance of the selection panel meetings for their initial review. The Britannia Shipyards National Historic Site Artist in Residence selection meeting took place on October 24, 2017. The selection panel included the following three members:

- Brenda Stringer – Britannia Heritage Shipyards Society (BHSS), Community Association member and Richmond resident
- Candie Tanaka – Artist
- Terry Point – Curator and Educator

Artist panel advisors included City staff from the Britannia Shipyards National Historic Site and the Public Art Program.

The Lower Mainland based artist team, Artists Rendering Tales Collective Inc. (ARTCI), was recommended for the Britannia Shipyards National Historic Site Artist in Residency.

An artist selection process was implemented for the Hamilton Community Association McLean Neighbourhood Park artist opportunity on October 26, 2017 to select the artist or artist team for the commission. The selection panel included the following three members:

- Pam Huggan – Hamilton Community Association representative and Richmond resident
- Cheryl Hamilton – Artist
- Bruce Hudson – Artist and educator

Panel advisors included City staff from the Hamilton Community Centre, Parks Services and the Public Art Program.

The collaborative artist team comprised of Bryn Finer, Donald Gunn and Eben Finer from Salt Spring Island was recommended for the Hamilton Community Centre permanent legacy sculpture for the McLean Neighbourhood Park.

An artist selection process was implemented for the Richmond Arenas Community Association artist opportunity on November 2, 2017, to select the artist or artist team for the commission. The selection panel included the following three members:

- Barb Norman – Richmond Arena Community Association representative
- Helen Cain – Heritage Planner, City of Vancouver
- Hilda Fung – Local Richmond Artist and educator

Panel advisors included Don Kuzik from the Richmond Arenas Community Association and City staff from Minoru Arenas and the Public Art Program.

Vancouver artist Faith Moosang was recommended for the Minoru Arenas art project.

All artist proposals were evaluated on the basis of artistic merit, appropriateness to the goals of the Community Public Art Program, community organization objectives, artist qualifications and project feasibility.

On November 21, 2017, The Richmond Public Art Advisory Committee reviewed the selection panel recommendations and endorsed the recommended artists for the 2018 Engaging Artists in Community Program.

Recommended Public Art Projects

Each respective selection panel reviewed all artist proposals and recommended support for the following artists and artist concepts:

- Bryn Finer Studios, Hamilton Community Association (\$20,000). A permanent legacy sculpture for the McLean Neighbourhood Park will be inspired by the native wildlife in Hamilton. Artists will engage children, youth, adults and seniors at the Hamilton Community Centre in the selection of the wildlife to be portrayed by the artists through art-based activities and workshops (Attachment 2).
- Faith Moosang, Richmond Arenas Community Association (\$10,000 plus up to \$22,000 printing and installation costs by RACA). A series of 20 to 22 large scale digital art wraps will be created by the artist. They will be printed and applied to large structural concrete pillars inside the main arena. The artist will engage the Richmond Archives and Minoru Arena user groups and community members to solicit and collect archival materials and oral stories to inform the artwork. The artist will then prepare concept proposals to be presented to RACA and City staff for feedback and approval prior to executing the artwork for reproduction and installation (Attachment 3).
- ARTCI Collective, Britannia Shipyards National Historic Site (\$10,000). An artist in residence project that will engage culturally diverse and multi-generational audiences in performance and visual art-based storytelling activities and events throughout spring,

summer and fall of 2018. The project will aim to engage and reflect the historical and cultural heritage of the site (Attachment 4).

Next Steps

Following Council endorsement of the concept proposals, an interdepartmental staff team will work with the artists to develop project implementation phases and evaluate the feasibility of legacy artworks, including suitable locations and any ongoing maintenance requirements for the artwork. If approved, the projects will move into the development phase, with implementation to be completed by end of 2018.

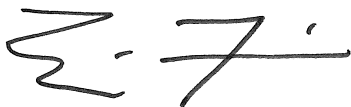
Financial Impact

The Public Art Program has allocated \$10,000 for each community art project for a total of \$30,000 from existing funds in the approved 2017 Public Art Capital Project. An additional \$10,000 will be contributed by the Hamilton Community Association. The Richmond Arenas Community Association will be responsible for the costs of up to \$22,000 associated with printing and installation of the art work on up to 22 concrete columns located around the perimeter of the main arena.

Any maintenance and repairs required for the artwork will be the responsibility of the Public Art Program. City funds would be allocated out of the Public Art Program's annual operating budget.

Conclusion

Richmond's Community Public Art Program creates opportunities to support artists with socially oriented artist practices. The public art projects outlined in this report will engage culturally diverse and multi-generational community members and user groups in a multitude of visual and performance-based art activities designed to provoke dialogue and participation in the making of the artist projects.



Eric Fiss
Public Art Planner
(604-247-4612)

- Att. 1: Engaging Artists in Communities, Artist Call Terms of Reference
2: Hamilton Community Association, Artist Concept
3: Richmond Arenas Community Association, Artist Concept
4: Britannia Shipyards National Historic Site, Artist in Residency

call to artists

PUBLIC ART
RICHMOND



Artists Engaging Communities

Community Public Art Program

September 2017

The City of Richmond Public Art Program seeks three artists or artist teams with socially oriented practices to engage diverse and multi-generational audiences in three unique public art opportunities. Artists will be required to choose one of three communities to work with: Hamilton Community Association, Minoru Arenas Association or Britannia Shipyards National Historic Site. These art opportunities invite emerging and professional artists to imagine innovative ways to engage seniors, adults, youth and children in the making of artwork and foster individual creative expression for their community.

- Artist Budget:** \$20,000 CAD, Hamilton Community Association
 \$10,000 CAD, Richmond Arenas Community Association
 \$10,000 CAD, Britannia Shipyards National Historic Site
- Eligibility:** Open to artists and artist teams residing in British Columbia
- Deadline for Submissions:** Tuesday, October 17, 2017, 5:00 p.m.
- Duration:** January – December 2018

call to artists

PUBLIC ART
RICHMOND

BACKGROUND

The Richmond Community Public Art Program supports artists with socially-oriented practices and encourages the development of a wide variety of collaborative engagements for artists working within communities. Community-based artworks can express a shared goal or theme and provoke dialogue on ideas related to cultural identity, social history or the environment. Artist projects can leave a physical or social legacy for the community and may include a public event such as a performance, participatory art installation, exhibition, concert, dance, reading or documentary artwork.

Projects will engage participants by providing them with a greater sense of self, identity, community and place through learning and participating in an art making experience. The work must be accessible and appeal to diverse audiences and the local community. Artists will demonstrate the capacity to undertake and complete their proposed work within an approved time frame.

OPPORTUNITY

There are three (3) opportunities for community-based artworks, working with the following community partners:

- Hamilton Community Association, McLean Neighbourhood Park
- Richmond Arenas Community Association, Minoru Park
- Britannia Shipyards National Historic Site

Artists are encouraged to choose the opportunity that best fits their interests, skills and experience by reviewing the partner profiles (pages 5–15). Artists can only apply to one of the three opportunities.

PAST ARTIST PROJECTS

- Marina Szijarto, [Harvest Full Moon Project](#), 2015-2016
- Catriona Megumi Longmuir, [Minoru Seniors Legacy Stories](#), 2017
- Pierre Leichner, [spART Project](#), 2017

ARTIST ELIGIBILITY

Open to emerging and professional artists and artist teams residing in British Columbia. City of Richmond employees are not eligible to apply.

SELECTION PROCESS

A selection panel consisting of a combination of artists, art professionals and community representatives will convene for each of the three opportunities. The selection panel will engage in a two-stage selection process to review all artist submissions. During the second stage, artists or artists teams will be invited for an interview with the Selection Panel. At the conclusion of the process, the panel will recommend one artist or artist team for each

call to artists

PUBLIC ART
RICHMOND

opportunity. A total of three artists or artist teams will be selected and enter into a contract with the City of Richmond. Artists will work to research and develop their concept proposal to be submitted for review by the Richmond Public Art Advisory Committee (RPAAC) and City staff before implementation of the project.

ARTIST SELECTION CRITERIA

Submissions to the Call will be reviewed and decisions made based on the following:

- Artistic merit and clarity of artist statement of interest in response to the Partner Profile interests and goals. The proposal should demonstrate high artistic quality, innovation and creativity.
- Demonstration of high artistic quality, innovation and creativity in applicant's previous work and experience.
- Community impact of work that will engage diverse and multi-generational audiences and artists in creative dialogue, participation and awareness.
- Artist's capacity to work with community members, other design professionals and project stakeholders.
- Appropriateness of the proposal to the Public Art Program goals:
www.richmond.ca/culture/publicart/plans/policy

SUBMISSION REQUIREMENTS

E-mail all documentation as one (1) PDF document, not to exceed a file size of 5 MB to: publicart@richmond.ca

- INFORMATION FORM – Please complete the information form attached to this document.
- STATEMENT OF INTENT – One page maximum, explaining proposed conceptual approach to the work, why the artist is interested in this opportunity and how the project responds to the specific aims of the centre profile opportunity.
- *OPTIONAL* - CONCEPTUAL ARTIST SKETCH – One page maximum, if applicable, a preliminary concept visualization to accompany the statement of intent.
- ARTIST CV – (One page maximum). Teams should include one page for each member.
- WORK SAMPLES – Ten (10) examples of previous work. Please include artist name(s), title, year, location and medium information as captions on the bottom of each image page.
- REFERENCES – Three references who can speak to your abilities and accomplishments. Provide contact name, title, phone number and e-mail.

call to artists

PUBLIC ART
RICHMOND

SUBMISSION GUIDELINES

1. All supporting documents must be complete and strictly adhere to these guidelines and submission requirements (above) or risk not being considered.
2. All submissions must be formatted to 8.5 x 11 inch pages. Support images and concept sketches are best formatted to landscape format.
3. Submission files must be 5 MB or smaller.
4. If submitting as a team, the team should designate one representative to complete the entry form. Each team member must submit an individual resume/curriculum vitae.
5. All documents must be sent by e-mail to: publicart@richmond.ca

ADDITIONAL INFORMATION

1. The selected artist will be required to show proof of WCB coverage and \$5,000,000 general liability insurance.
2. Please be advised that the City and the selection panel are not obliged to accept any of the submissions and may reject all submissions. The City reserves the right to reissue the Artist Call as required.
3. All submissions to this Artist Call become the property of the City. All information provided under the submission is subject to the Freedom of Information and Protection of Privacy Act (BC) and shall only be withheld from release if an exemption from release is permitted by the Act. The artist shall retain copyright in the concept proposal. While every precaution will be taken to prevent the loss or damage of submissions, the City and its agents shall not be liable for any loss or damage, however caused.
4. Extensions to this deadline will not be granted under any circumstances. Submissions received after the deadline and those that are found to be incomplete will not be reviewed.

QUESTIONS

Please contact the Richmond Public Art Program:

Tel: 604-204-8671

E-mail: publicart@richmond.ca

call to artists

PUBLIC ART
RICHMOND

COMMUNITY DESCRIPTION

The Hamilton Community Association enhances the quality of life for residents by delivering accessible recreational programs and community services in partnership with the City of Richmond. The Association is proud of their licensed childcare programs for preschoolers and school-aged children, fitness services and special events, including their signature event, *Hamilton Night Out*, which takes place in June in McLean Park.

Hamilton is a growing family-oriented neighbourhood located at the eastern end of Richmond and is shaped by the North and South Arms of the Fraser River, Boundary Canal and New Westminster's Queensborough community to the east. These natural features define Hamilton as a unique community with a separate village centre.

Hamilton Community Association would like an artwork to enhance McLean Neighbourhood Park, a popular 10.7 acre park located west of Westminster Hwy on the corner of McLean and McCrae Avenue. The park is well-used on weekday evenings and weekends by families and dog owners. Located a short distance away from the Hamilton Community Centre, it features a sports field, ball diamond, two basketball courts and a rolling landscape with intersecting pathways and a recently upgraded playground. An existing kinetic public art piece entitled *Spotty the Dog* by artist Douglas Taylor is situated on the south east end of the park, adjacent to the Hamilton Fire Hall.

ARTIST OPPORTUNITY

The concept for the legacy artwork will be informed by an artist-led consultation with a diverse, multi-generational community. Opportunities exist for the artist to engage children, youth, adults and seniors at Hamilton Community Centre, located at 5140 Smith Drive.

The aims of the Hamilton community public art project:

- Create a legacy artwork in McLean Park, which may include functional elements such as seating and way finding.
- Develop and implement an engaging consultation process for adults, youth and seniors to contribute and inform the final artwork. This may include artist-led participatory workshops, hands-on activities and/or digital communication strategies.
- Foster connection and dialogue between community members.
- Create a final artwork that is low maintenance. The artwork should also include strategies to deter graffiti.
- The artist or artist team will be required to create and maintain an artist blog to communicate and document the process and art project.

Partner Profile A

Hamilton Community Association at McLean Park

call to artists

PUBLIC ART
RICHMOND

SCOPE OF WORK

The selected artist will develop and lead a maximum of five (5) workshops, public engagement events or consultation meetings to determine a shortlist of artwork opportunities including artwork type and location. The artist will develop up to three (3) concepts for legacy artworks to be presented to City staff and the Hamilton Community Association. A preferred concept will be selected and the artist will continue to develop the concept for implementation stages, including production or fabrication. The costs associated for installation of the artwork will be the responsibility of the City of Richmond.

LOCATION

Artists will be required to work with representatives from the Hamilton Community Association and City staff to determine the location of the artwork in the park. Opportunities exist for surface applications on the pedestrian pathways. Artists are encouraged to visit the park to understand scale, site, context and topography of the site. Please refer to Figure 1.

BUDGET

The project budget for this opportunity is \$20,000 CAD and is inclusive of up to five (5) community engagement consultations, consultation processes and any additional artist expenses including but not limited to artist fees, materials, production, fabrication, professional consultant fees, photography, artist insurance and applicable taxes, excluding GST. Costs associated with installation of the artwork will be the responsibility of the City of Richmond.

PROJECT TIMELINE

Finalist Notifications:	October 30, 2017
2nd Stage Interviews:	Thursday, November 16, 2018, 5:30-8:30pm, Richmond City Hall, 6911 No.3 Road*
Project Start:	January 2018
Completion:	June 2017

*Artists applying for this opportunity are asked to reserve this date in their calendar.

call to artists

PUBLIC ART
RICHMOND

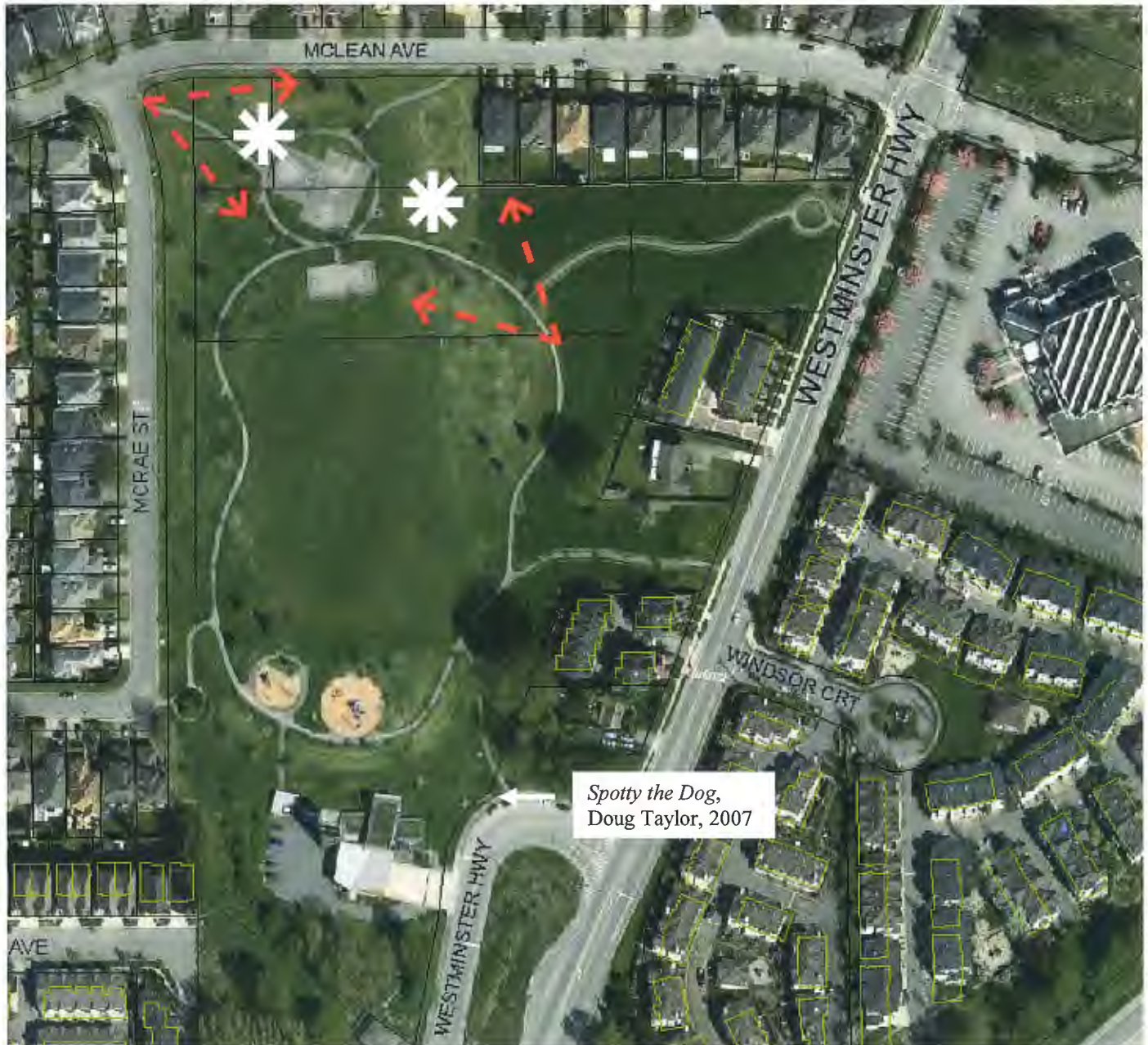


Figure 1. McLean Community Park showing possible locations for artwork.

call to artists

PUBLIC ART
RICHMOND

COMMUNITY DESCRIPTION

Minoru Arenas is located in the heart of Richmond at 7551 Minoru Gate, part of Minoru Park, which includes the Richmond Cultural Centre, Richmond (Brighthouse) Library, Minoru Place Activity Centre and Minoru Aquatic Centre. The arena is home to the Junior "B" Richmond Sockeyes of the Pacific International Junior Hockey League, Connaught Skating Club and Richmond Lacrosse Association. The facility boasts two regulation size rinks (200' x 85') and offers ice from September to April and dry floors from April to August. Facility amenities include eight dressing rooms, a meeting room, Time Out Café, skate and helmet rentals. Minoru Arena is wheelchair accessible and can seat up to 1,400 spectators. For larger events, the Arena offers 17,000 square feet of dry floor space.

ARTIST OPPORTUNITY

The selected artist will work with community representatives and City staff to develop proposals for artworks to be digitally reproduced and applied to concrete pillars inside the arena. Refer to Figure 2. The artwork will aim to recognize the history of the Minoru Arena in Minoru Park, community user groups and its significant contribution in supporting athletes, sports and fitness programs in Richmond. The artist will consult with resident sport groups, explore the City's archives and invite community members to share stories or memorabilia to inform the artwork.

Artists with interdisciplinary practices across a range of media are encouraged to apply including photography, digital new media and illustration, printmaking and painting, just to name a few. The work will be visibly accessible to the public and allow visitors and community members to connect with the past, engage with the present and look forward to the future.

The aims of the Minoru Arenas community public art project:

- Capture the history of the Minoru Arena including its relationship to Minoru Park.
- Honour the past contributions of user groups and community members.
- Encourage interaction and mixing between different cultural groups throughout the community engagement process.
- Create an engaging conduit for a diverse cultural community to participate and inform the artwork concept.
- Encourage and support artistic practices which foster individual expression, dialogue, ownership and celebration of the artwork that will leave a physical legacy in the community.
- The artist or artist team will be required to create and maintain an artist blog to communicate and document the process and art project.

Partner Profile B

Minoru Arenas in Minoru Park

call to artists

PUBLIC ART
RICHMOND

SCOPE OF WORK

The selected artist will be required to develop and lead a maximum of five (5) public engagement activities or consultation meetings. It is the expectation that the artist will take the collected or contributed material from community members to inform the artwork(s) concept development. The artist will then develop up to three (3) concept proposals to be presented to City staff and the Richmond Arenas Community Association. It is the intention that a preferred concept will be selected and the artist will continue to develop the concept for implementation phases.

Artists will have scheduled access to the amenity spaces available at the Minoru Arena to lead workshops or public engagement activities with community members and user groups. A storage locker can be provided for the artist to keep materials and/or equipment on site.

LOCATION

The artwork will be installed inside the arena and will be digitally reproduced and applied to concrete pillars by a contracted specialist printer and installer. There are a total of 22 concrete pillars located around the perimeter of the main arena. The artwork will cover all visible surfaces of the pillar. Please refer to Figure 2.

BUDGET

The project budget for this opportunity is \$10,000 CAD and is inclusive of community engagement activities, materials for engagement activities, administration, artist fees for concept and detailed artwork design, photography documentation, artist insurance and applicable taxes, excluding GST. The costs for production, printing and installation will be provided by the Richmond Arenas Community Association.

PROJECT TIMELINE

The selected artist must complete all work by December 2018. Installation of the art wraps must occur between June to August 2018.

Finalist Notifications:	November 6, 2017
2nd Stage Interviews:	Tuesday, November 14, 2017, 5:30-8:30pm, Richmond City Hall, 6911 No.3 Road*
Project Start:	January 2018
Completion:	August 2018

*Artists applying for this opportunity are asked to reserve this date in their calendar.

call to artists

PUBLIC **ART**
RICHMOND



Figure 2. Example of concrete pillar in Minoru Arena. A total of 29 pillars.

COMMUNITY DESCRIPTION

Britannia Shipyards National Historic Site is an authentic and rare representation of a once thriving community of canneries, boat yards, residences and stores. The City of Richmond works with the Britannia Heritage Shipyard Society and dedicated volunteers to preserve and restore the shipyard and surrounding buildings as an active wooden boat centre and waterfront park. The site welcomes visitors to tour the oldest shipyard buildings in British Columbia, observe ongoing boat restoration projects and experience a bygone time when fishing and boatbuilding were flourishing industries on the Fraser River.

Many of the buildings date back to 1885 and tell the stories of multi-ethnic residents and workers at the Britannia Cannery and Britannia Shipyards: Chinese, European, First Nations and Japanese. This collection of buildings was designated a National Historic Site in 1992.

The aims and scope of the Britannia Shipyards Artist in Residency:

- Engage an artist or artist team with an interdisciplinary and performance-based art practice. Artists may have practices in performance, dance, new media art, sculpture, visual arts, writing/storytelling and filmmaking, just to name a few.
- Support artistic projects which foster historical consciousness of an individual's sense of cultural identity through creativity and self-expression.
- Encourage interaction and social connections between diverse cultural groups in the artist conception and/or making of the artwork.
- Creating artwork that will encourage understanding, foster cultural awareness and celebrate inter-cultural relationships within Richmond.
- Bring to light the meaningful historical personal stories of the people who lived and worked Britannia.
- The artist or artist team will be required to maintain heritage preservation standards when working on Site i.e. not touching or moving artefacts in exhibit spaces; placing drop cloths in programmable spaces when working on artwork etc.
- A maximum of 300 hours of work will be completed by the selected artist or artist team including public engagement activities, administration, preparation and production from January – December, 2018.
- An artist or artist team will be available from May 1 – September 30, 2018 to facilitate or present six public programs for Doors Open, Rivers to Oceans Week, Ships to Shore, Maritime Festival, Culture Days and an artist talk.
- The artist will create and maintain an artist blog to communicate and document the process and work created during the artist residency.

Partner Profile C

Britannia Shipyards National Historic Site

call to artists

PUBLIC ART
RICHMOND

LOCATION

The Britannia Shipyards National Historic Site is located at 5180 Westwater Drive, Richmond, BC. Artists will have access to the site's meeting and amenity spaces including the Chinese Bunkhouse, Murakami Boatworks and Seine Net Loft (Refer to Figures 3 to 8). Dedicated space for storage of artist materials and equipment is available. Other spaces for the production or presentation of artist projects will be determined while working with staff as the residency evolves.

BUDGET

The project budget for this opportunity is \$10,000 CAD and is inclusive of community engagement activities, consultation processes and any additional artist expenses including but not limited to artist fees, materials, production, fabrication, consultant fees, installation, photography, artist insurance and applicable taxes, excluding GST. Artists will be required to submit a detailed budget once the artist's scope of work is approved during the contract phase.

PROJECT TIMELINE

Finalist Notifications: November 2017

2nd Stage Interviews: Wednesday, November 1, 2017, 5:30-8:30pm,
Richmond City Hall, 6911 No.3 Road*

Duration: January – December 2018

*Artists applying for this opportunity are asked to reserve this date in their calendar.

Additional information (hyperlinks below)

- [Britannia Heritage Shipyard Society](#)
- [City of Richmond Public Art Program](#)
- [A Capture of Memories : The Murakami Family at Britannia \(2015\)](#)
[Richmond Mobile Apps: Britannia Shipyards](#)

call to artists

PUBLIC ART
RICHMOND



**Britannia
Shipyards National
Historic Site**

Figure 3. Chinese Bunkhouse program space.



Figure 4. Chinese Bunkhouse kitchen facilities.

call to artists

PUBLIC ART
RICHMOND



Figure 5. Murakami Boatworks program space with double doors facing the boardwalk



Figure 6. Seine Net Loft program space for educational outreach

**Britannia
Shipyards National
Historic Site**

call to artists

PUBLIC ART
RICHMOND



Figure 7. Outdoor theatre and performance area with stepped seating



Figure 8. Seine Net Loft outdoor deck area with water views

**Britannia
Shipyards National
Historic Site**

Hamilton Community Association, McLean Park, Community Public Art Project

Artist Concept Proposal – Donald Gunn, Bryn Finer and Eben Finer

We propose a large, but realistic sculpture of a creature that is or was once found in Richmond. It is our intention to create a meaningful piece of public art for the Hamilton Community Association, McLean Neighbourhood Park that will have educational value and social relevance for that community.

This sculpture will serve to honor the wildlife that once thrived in the now densely populated City of Richmond. A simple information panel mounted on the supporting post will explain the biology and life cycle of the creature, its habitat requirements and where it might still be found. It is interesting to note that what is good for an animal is also generally good for people and it is our intention that this piece of civic art will encourage the residents of Richmond to understand the rich natural heritage of Richmond, cherish their remaining green spaces and help conserve and enhance what is still there.

This will be a unique sculptural piece that will be made from durable fiberglass and welded aluminum. It is our intention to run a series of workshops in the local schools and/or the local community centre to engage local residents in establishing the most appropriate sculptural form for this project.

Artist Team

Bryn Finer, Donald Gunn and Eben Finer are a collaborative artist team from Salt Spring Island. They combine their professional skills and experience in architecture, design and fabrication services to create engaging interpretive exhibition designs and sculptures. They have worked with Kwisis Centre; Pacific Rim National Park Reserve; Uclulet, BC; Waterton Lakes National Park and Science World at Telus World of Science.

Bryn Finer Studios - Examples of Past Work



Figure 3 and 4 – Bear sculpture, Waterton Lakes and Salmon Grows in Trees Exhibit, Kwisitis Centre, Pacific Rim National Park Reserve, Uclulet, B.C.



Figure 5 - Giant fiberglass slug play structures Kwisitis Centre, Pacific Rim National Park Reserve, Uclulet, B.C.

Minoru Arenas Community Public Art Project

Artist Concept Proposal – Faith Moosang

In both my artistic and curatorial practices I find myself constantly returning to three major threads: archives, research and personal history. These three threads, along with my previous experience in creating Public Artworks, situates me to make the most of the Minoru Arenas Artist Opportunity, with its emphasis on history, the archives and cross-cultural community engagement.

As laid out in the Call, my intention is to “consult with resident sport groups, explore the City’s archives and invite community members to share stories” or photographs to inform the artwork. Also, as laid out in the Call, I will create and maintain a website dedicated to the process and outcome of the project.

Obvious themes to pursue would be the history of sporting in Richmond and the specific historical iterations of the Minoru Arena site. However, from past experience I know that a complete focus on this place and this history often excludes new immigrant experience. My dream of dreams would be to find sporting enthusiasts who have photograph albums documenting their relationship to sports in their country of origin. As to those pillars, there is also something compelling about their upside-down hockey stick shape and their regimental configuration. The pillars also suggest the necks of horses— perhaps the ones who churned up the soil of the Minoru Park track so very long ago.

Artist Bio

Faith Moosang is a photo graphic artist who has amassed a large collection of vernacular photography that includes photo albums numbering in the hundreds, numerous home movies, slide collections and other ephemera related to the domestic sphere and the remembrance of family. She is currently creating a work about the empire of media, dirty money and the amassing of classical statuary, based on a slide collection created by an unknown tourist who visited Hearst Castle in the 1960s.

Faith Moosang – Examples of Past Work



Figure 1. Faith Moosang and Deanne Achong, *Underwater Chinatown*, 2016, <https://underwaterchinatown.com>, Interactive Website, Cinevolution Media Society



Figure 2. Faith Moosang, *down.town.*, 2015, Large-scale Photographic Mural, Vancouver, BC.

Britannia Artist in Residence – Community Public Art Project**Artist Concept Proposal – ARTCI, Artist Collective**

ARTCI's intent in partnering with Britannia Shipyards National Historic site is to provide the Richmond community with a greater sense of self, identity, community and place through learning and participating in a diverse art making experience.

We propose a series of activities and workshops to engage diverse and multi-generational audiences and artists in creative dialogue, participation and awareness of their communities past, present and future. Workshops and performances will be accessible to all and invite Richmond's diverse cultural, creative and community groups to participate. We aim to weave the content of historical documents and personalities into every aspect of the work as we strive to create "a day in the life at the shipyards" through the lens of the past as well as the present. Many of the workshops leading up to events could take place on site at Britannia or at other Richmond locations. Our team of artists propose a project that includes:

- Drama/Storytelling and Indigenous Insights/Creative Writing: Public drama workshops will be set up and various community, cultural and school groups will be approached to participate.
- Video and Blog: To compliment the drama segment, the ARTCI video team will record and edit some of the actors performing in their roles, speaking to their experience working at Britannia.
- Visual Art: The visual Art component fuses the past with the present through map art. Public engagement workshops will invite people to explore a conceptual base map of polyethylene fabric prepped with acrylic medium. The map layers will reference culture surrounding personal stories, language, and memorabilia of the shipyard community.

Artist Team

Artists Rendering Tales Collective Inc. (ARTCI) is composed of a group of professional artists from a variety of disciplines who recognize the benefits a diversified artistic team brings to public art and community engagement projects. The collective formed in 2015 and features visual, drama, creative writing, video, photography, multi-media, storytelling and Indigenous artists who collaborate with community partners to bring more art and artists to the public under one umbrella organization. Members of the collective include Brunella Batista, Shelley MacDonald, Roy Mulder, Lori Sherritt-Fleming, Karen J. Myskiw, Trade Mae Stewart and Mary Jane Doe.

ARCTI- Artist Collective Examples of Past Work



Figure 1. Artists Rendering Tales Collective Inc, Coquitlam's Historical Characters, 2016, Coquitlam, Theatre



Figure 2. Artists Rendering Tales Collective Inc., Coquitlam's Historical Characters, 2016, Coquitlam; Theatre