



# City of Richmond

## Report to Committee

**To:** General Purposes Committee

**Date:** November 21, 2014

**From:** John Irving, P.Eng. MPA  
Director, Engineering

**File:** 10-6000-01/2014-Vol  
01

**Re:** 2015 Paving Program

### Staff Recommendation

That the staff report dated November 21, 2014, titled "2015 Paving Program" from the Director, Engineering be received for information.

John Irving, P.Eng. MPA  
Director, Engineering  
(604-276-4140)

Att. 3

REPORT CONCURRENCE		
<b>ROUTED TO:</b>	<b>CONCURRENCE</b>	<b>CONCURRENCE OF GENERAL MANAGER</b>
Roads & Construction	<input checked="" type="checkbox"/>	
<b>APPROVED BY CAO</b>		

## **Staff Report**

### **Origin**

In previous years, staff have presented the annual paving program report for information purposes.

### **Background**

The paving program is required to maintain the City's road network to current operating levels as well as reduce the need for costly repairs. Staff have developed a prioritized list of locations which are included in the 2015 Paving Program.

### **Analysis**

The scope of work includes the milling and paving of roads in priority order as identified by the City's Pavement Management System (PMS) and staff. The PMS software takes into account items such as the age, structure, and current condition of the road. Pavement deflection data was gathered for select roads (arterial roads, the TransLink Major Road Network (MRN), recently resurfaced segments, and sections with substantial surface cracking) and is being used in the current PMS model.

The Aging Infrastructure Planning Report has identified a need for additional funding to maintain the City's roads to the current level of service. The impact of this funding gap has been partially mitigated by low paving contract prices over the last few years. This pricing is a result of early tendering of the annual paving contract and low material costs.

Included in Attachment 1 is a list of the primary paving sites included in the 2015 Paving Program. As with past years, it is possible that identified paving locations cannot be completed due to conflict with development projects that are not known at this time. Should the seasonal paving restrictions permit, any new development related paving locations would be replaced with the secondary paving locations. See Attachment 2 for a list of the secondary paving sites. Two maps (Richmond West and Richmond East) of proposed paving sites are attached in Attachment 3.

The tender for this year's Paving Program will be issued to the market in December 2014. In recent years, achieving contractor completion of the paving program within the dates specified in the contract has become an issue. To mitigate this, the tender for the 2015 Paving Program contains provisions that will allow contracts to be awarded to more than one contractor.

The 2015 Paving Program also includes an amendment to the City's standard tendering practices that reflects upon the City's environmental initiatives and allows for the use of recycled asphalt. The successful bidder will be encouraged to employ sustainable methodologies, practices and materials that would assist in reducing harmful emissions, in direct alignment with the City's sustainability goals.

The tender also notes that the contract award is subject to approval of the 2015 Capital Budget by Council.

**Financial Impact**

Proposed funding for the 2015 Paving Program has been submitted as part of the 2015 Capital Budget as follows:

<b>Proposed Funding</b>	<b>Amount (\$)</b>
2015 Annual Asphalt Re-Paving Program – MRN	\$ 914,000
2015 Annual Asphalt Re-Paving Program – Non-MRN	\$ 2,458,600
<b>Total Proposed Funding</b>	<b>\$ 3,372,600</b>

Award of the 2015 Paving Program will occur once the 2015 Capital Budget is approved by Council.

**Conclusion**

The procurement process for the 2015 Paving Program is underway. Contract award and commencement of paving will occur once the 2015 Capital Budget is approved by Council.



Milton Chan, P. Eng.  
Manager, Engineering Design & Construction  
(604-276-4377)



Wasim Memon, C.E.T.  
Supervisor – Inspections  
(604-247-4189)

MC:mc

- Att. 1: 2015 Paving Program – Primary Locations
- Att. 2: 2015 Paving Program – Secondary Locations
- Att. 3: 2015 Paving Program Proposed Locations – Richmond West and Richmond East

## ATTACHMENT 1

**2015 PAVING PROGRAM – PRIMARY LOCATIONS**

<b>LOCATION</b>	<b>FAULTS</b>
9000 Block of No.1 Road	- Utility Cuts, Pavement Cracking
7000 Block of No. 3 Road	- Utility Cuts, Pavement Cracking
9000 Block of No. 3 Road	- Utility Cuts, Pavement Cracking
10,000 Block of No. 3 Road	- Utility Cuts, Pavement Cracking
7000 Block of No. 4 Road	- Utility Cuts, Pavement Cracking
10,000 Block of No. 4 Road	- Utility Cuts, Pavement Cracking
7000 Block of No. 5 Road	- Utility Cuts, Pavement Cracking
11,000 & 12,000 Block of No. 5 Road	- Utility Cuts, Pavement Cracking
3000 Block of Blundell Road	- Utility Cuts, Pavement Cracking
4000 Block of Blundell Road	- Utility Cuts, Pavement Cracking
9000 Block of Blundell Road	- Utility Cuts, Pavement Cracking
11,000 Block of Blundell Road	- Utility Cuts, Pavement Cracking
8000 Block of Cambie Road	- Utility Cuts, Pavement Cracking
9000 Block of Cambie Road	- Utility Cuts, Pavement Cracking
4000 Block of Garden City	- Utility Cuts, Pavement Cracking
8000 Block of Lansdowne Road	- Utility Cuts, Pavement Cracking
6000 Block of Miller Road	- Utility Cuts, Pavement Cracking
7000 Block of Minoru	- Utility Cuts, Pavement Cracking
Nelson and Blundell Intersection	- Utility Cuts, Pavement Cracking
4000 & 5000 Block of River Road	- Utility Cuts, Pavement Cracking
3000 Block of Williams Road	- Utility Cuts, Pavement Cracking
11,000 Block of Williams Road	- Utility Cuts, Pavement Cracking
6000 Block of Steveston Highway	- MRN Treatment
No.5 Road and Bridgeport Road	- MRN Treatment
9000 Block of Steveston Highway	- MRN Treatment
Knight Street	- MRN Treatment
22,000 Block of Westminster Hwy (North of Hwy 91)	- MRN Treatment
Trites Road	- Utility Cuts, Pavement Cracking
4000 Block of Garry Street	- Utility Cuts, Pavement Cracking
5000 Block of Wallace Road	- Utility Cuts, Pavement Cracking
8000 Block of Bowcock	- Utility Cuts, Pavement Cracking
Cessna Drive	- Utility Cuts, Pavement Cracking
Lindsay Road/Lancing Road/Ledway Road	- Utility Cuts, Pavement Cracking
Viscount Way	- Utility Cuts, Pavement Cracking
9000 Block of Geal Road	- Utility Cuts, Pavement Cracking
Robinson Road/Gay Road/Moore Road/Myhill Road	- Utility Cuts, Pavement Cracking
Jaskow Drive/Evancio Crescent	- Utility Cuts, Pavement Cracking
10,000 Block of Leonard Road	- Utility Cuts, Pavement Cracking

## ATTACHMENT 2

**2015 PAVING PROGRAM – SECONDARY LOCATIONS**

<b>LOCATION</b>	<b>FAULTS</b>
14,000 & 15,000 Block of River Road	- Utility Cuts, Pavement Cracking
6000 Block of No. 2 Road	- MRN Treatment
Hammersmith Way (Horseshoe Way to Coppersmith Way)	- Utility Cuts, Pavement Cracking
Coppersmith Way (Horseshoe Way to Hammersmith Way)	- Utility Cuts, Pavement Cracking
Hammersmith Gate (Shell Road to Hammersmith Way)	- Utility Cuts, Pavement Cracking
7000 Block of Railway	- Utility Cuts, Pavement Cracking



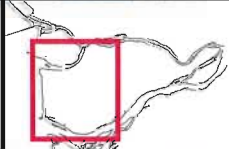
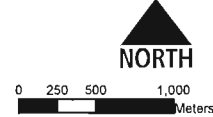
### Legend

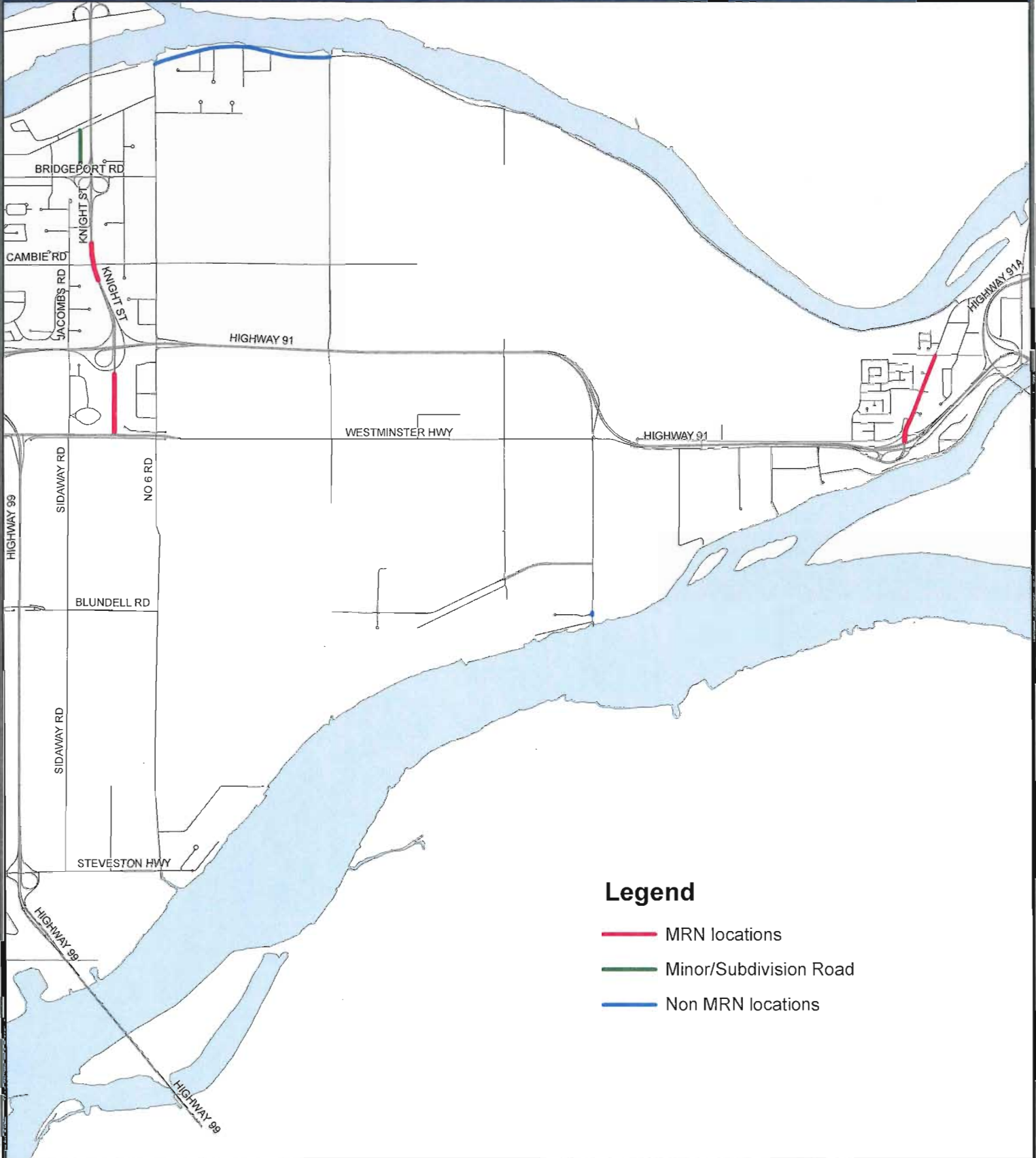
- MRN locations
- Minor/Subdivision Road
- Non MRN locations

**Note:**  
 The information shown on this map is compiled from various sources and the City makes no warranties, expressed or implied, as to the accuracy or completeness of the information.  
 Users are reminded that lot sizes and legal description must be confirmed at the Land Title office in New Westminster.  
 This IS NOT a legal document, and is published for informational and convenience purposes only.  
 © City of Richmond, 2014. All rights reserved.  
 Not to be reproduced or distributed without permission.

**GP - 97**

Print By: spang  
 Print Date: November 26, 2014





### Legend

- MRN locations
- Minor/Subdivision Road
- Non MRN locations

**Note:**  
 The information shown on this map is compiled from various sources and the City makes no warranties, expressed or implied, as to the accuracy or completeness of the information.  
 Users are reminded that lot sizes and legal description must be confirmed at the Land Title office in New Westminster.  
 This IS NOT a legal document, and is published for informational and convenience purposes only.  
 © City of Richmond, 2014. All rights reserved.  
 Not to be reproduced or distributed without permission.

**GP - 98**

Print By: spang  
 Print Date: November 26, 2014

