



City of Richmond

Report to Committee

To: Parks, Recreation and Cultural Services
Committee

Date: June 27, 2016

From: Jane Fernyhough
Director, Arts, Culture and Heritage Services

File: 11-7000-09-20-208

Re: 5460-5560 Moncton Street Sidewalk Public Artwork

Staff Recommendation

That the concept proposal and installation of the artwork proposed for the 5460-5560 Moncton Street Sidewalk, "Poet's Promenade" by artist Jeanette G. Lee, as presented in the staff report titled "5460-5560 Moncton Street Sidewalk Public Artwork" dated June 27, 2016, from the Director, Arts, Culture and Heritage Services, be approved.

Jane Fernyhough
Director, Arts, Culture and Heritage Services
(604-276-4288)

Att. 2

REPORT CONCURRENCE		
ROUTED TO:	CONCURRENCE	CONCURRENCE OF GENERAL MANAGER
Engineering Transportation Development Applications	<input checked="" type="checkbox"/> <input checked="" type="checkbox"/> <input checked="" type="checkbox"/>	
REVIEWED BY STAFF REPORT / AGENDA REVIEW SUBCOMMITTEE	INITIALS: DW	APPROVED BY CAO

Staff Report

Origin

As part of the Am-Pri Developments (2013) Ltd. development at 5460, 5480, 5500, 5520, 5540 and 5560 Moncton Street, the developer made a voluntary cash contribution of \$44,468 to the Public Art Reserve. Staff, in consultation with the developer, recommend that these funds be used to develop the artwork for the Moncton Street sidewalk along the frontage of the new development. This report presents the proposed location, public artwork and artist for Council's consideration.

This report supports Council's 2014–2018 Term Goal #2 A Vibrant, Active and Connected City:

Continue the development and implementation of an excellent and accessible system of programs, services, and public spaces that reflect Richmond's demographics, rich heritage, diverse needs, and unique opportunities, and that facilitate active, caring, and connected communities.

2.1. Strong neighbourhoods.

2.4. Vibrant arts, culture and heritage opportunities.

Analysis

Richmond Public Art Program

The Richmond Public Art Program sets a framework for creating opportunities for people to experience art in everyday life, encourage citizens to take pride in public cultural expression and complement the character of Richmond's diverse neighbourhoods through the creation of distinct public spaces.

The City's Public Art Program Policy encourages the private sector to support the integration of public artworks in the community during the rezoning and development permit process through integration of artworks either on their development site or on a City controlled property. Where located on City controlled land, the artwork will become the property of the City.

Development Proposal

The Am-Pri Developments (2013) Ltd. development consists of a 30-lot single-family residential subdivision. It is located at 5460, 5480, 5500, 5520, 5540 and 5560 Moncton Street, to the east of Trites Road and to the west of No. 2 Road in Steveston. Council approved the development's rezoning application (RZ 14-674749) on June 13, 2016. In addition, the developer entered into a Servicing Agreement, including the design and construction of the Moncton Street frontage sidewalk and boulevard (SA 15-706298).

Heritage

Moncton Street's Japanese gardens were characterized with small-scale, elegant, and simple plantings located in the front yards of a row of modest residential homes along a two-block

length of Moncton Street (4600-5500 Moncton Street). Consisting mainly of foliage plants, with some flowering species and the occasional annual, the gardens expressed the character of traditional Japanese garden style. Through the rezoning process, the developer agreed to install Japanese themed gardens beside the sidewalk along the Moncton Street frontage of the site. The proposed public art installation will complement these gardens.

Proposed Location

Due to the subdivision of the site into 30 lots, where maintenance of the work would need to be coordinated with individual property owners, the preferred location for public art associated with the development is on City lands fronting the site. The street frontage provides an opportunity for pedestrians to experience the art. As part of the Servicing Agreement (SA 15-706298), the developer agreed to integrate public art with the new sidewalk, fronting Moncton Street, mid-block between Trites Road and No. 2 Road.

Terms of Reference

The Public Art Terms of Reference (Attachment 1), prepared by public art consultant Jan Ballard, Ballard Fine Art Ltd., describes the art opportunity, site description, theme, budget, schedule, artist selection process and submission criteria. The public art consultant has met with the Steveston 20/20 Group and Richmond Arts Coalition and has incorporated their feedback in the development of the Terms of Reference. The Terms of Reference were reviewed and endorsed by the Public Art Advisory Committee on April 19, 2016.

Public Art Selection Process

Following the administrative procedures for artist selection of public artworks, an arm's length selection panel was engaged in a two-stage artist selection process. The three member selection panel consisting of two representatives from the Richmond/Steveston community and the developer's representative included:

- Joyce Kamikura, artist;
- Sarah Glen, artist; and
- Amit Sandhu, developer.

On April 28, 2016, the selection panel met to select three artists or artist teams from a list of artists recommended for the project by the consultant and the selection panel. The panel recommended that two additional artists be included on the short list. The five shortlisted artists were invited to develop a concept proposal for the project and were paid an honorarium of \$500 each to submit their proposals and attend an interview.

An artist orientation was held on May 10, 2016, at which time the consultant, developer and staff provided background on the goals and technical requirements for the project.

On June 6, 2016, the panel met again and reviewed the short-listed artist submissions and interviewed the artists. The concept proposal by Jeanette Lee was recommended for the commission (Attachment 2).

Proposed Artwork

The proposed artwork, entitled *Poet's Promenade*, transforms the approximately 118-metre new sidewalk on Moncton Street into a contemplation of the four seasons through English translations of the poetry of the Haiku poet Matsuo Basho (Attachment 2).

The proposal is to prepare metal stamps to create low-relief impressions of the outline of paving stones in the sidewalk surface. The text will be fabricated from stainless steel and mounted flush with the sidewalk. The installation of the stamping and embedded text will be coordinated by the artist with the sidewalk construction.

According to the artist:

“The word ‘promenade’ in the English dictionary defines itself as a ‘walk in a public place for pleasure.’ The word ‘promenade’ in the Japanese context originally, always featured a pathway for strolling designed to complement the home and allow communal time with nature. The *Poets' Promenade* artwork is inspired by combining ideas of both the western and the heritage Japanese promenades.”

Jeanette G. Lee has been an artist for over 30 years, with a strong interest in the natural environment. Jeanette's previous public artworks in Richmond include *House of Roots* (2003) at Paulik Neighbourhood Park, *Green Symphony* (2011) at the Richmond Nature Park, and *Rising* (2014) located at the West Richmond Community Centre.

Staff Comments on Proposed Artwork

Development Applications, Parks, Arts Services and Engineering staff have reviewed the proposed location in terms of urban design, maintenance and pedestrian safety and have no concerns with the concept proposal. Staff have also consulted with the Richmond Centre for Disabilities to review criteria for accessibility and safety and they have no concerns. Staff will continue to review the detailed design as it is developed to ensure that the artist addresses any technical or safety issues that may be identified.

The proposed low-relief stamping into the concrete is not anticipated to impact movement of wheelchairs or strollers. The small amount of stainless steel for the text to be flush mounted into the sidewalk is not anticipated to create a slipping hazard. Staff and the Richmond Centre for Disabilities will review the detailed design and provide comments to the artist.

The artwork will be designed so that it can be easily repaired or replicated with original concrete stamp forms if future utility or street work is required. The artist will be required to retain a structural engineer to sign off on the structural integrity of the proposed artwork, and confirm that it will not create any additional risks of cracking to the sidewalk.

Cost of the artwork and Transfer of Ownership

Staff propose that the developer's voluntary cash contribution of \$44,648 to the Public Art Reserve Fund be directed towards the selection, fabrication and installation of the 5460–5560 Moncton Street public art project. Of this voluntary developer contribution, \$2,232 (5%) has been transferred to the Public Art Provision for City administration of the project. The artist

contract is for \$33,000. The remaining funds, \$9,416, will remain in the Public Art Reserve for public art consultant fees (\$4,465), administration costs of the selection process (\$2,000) and contingencies (\$2,951). Upon completion, the ownership of the artwork will be transferred to the City from the artist.

Financial Impact

The artwork will require minimal periodic washing and maintenance at an approximate cost of up to \$1,000 per year, on average, for cleaning and sidewalk repairs should they be required. Funds would be allocated out of the Public Art Program's annual operating budget. The Public Art Program will be responsible for major repairs that may be required over the life of the installation and sidewalk.

Conclusion

Funding of the proposed artwork by Jeanette G. Lee signifies a continuing show of support by developers for the importance of public art to Richmond neighbourhoods and the City. The inclusion of public art within the 5460–5560 Moncton Street sidewalk will enhance the public realm within a publicly accessible open space and support the vision of Steveston as a high-amenity, pedestrian-oriented community.



Eric Fiss
Public Art Planner
(604-247-4612)

- Att. 1: Detailed Public Art, Artist Call Terms of Reference
2: Artwork Concept Proposal, *Poet's Promenade* by Jeanette G. Lee

DETAILED PUBLIC ART PLAN 5460-5560 Moncton, Steveston BC

APRIL 11, 2016



SUBMITTED BY:

Jan Ballard | Ballard Fine Art Ltd.

W. 604 922 6843 | C. 604 612 6645 | E. jan@ballardfineart.com

TABLE OF CONTENTS

Introduction	1
Project Details	2
Project Consultants	3
Context Plan	4
Project Description	5
Landscape Plan	7
Community Context	9
Public Art Context	12
Guiding Principles	14
Public Art Opportunity	15
Public Art Budget	16
Project & Public Art Timeline	17
Selection Process	18

INTRODUCTION



Gulf of Georgia Cannery, Steveston

The 5460-5560 Moncton Development, located in the heart of Steveston Village in Richmond, presents an exciting opportunity to feature an engaging public artwork. Ampri is committed to hosting a captivating public artwork that speaks to the spirit and character of this historic neighbourhood.

Ampri is looking forward to working with the City of Richmond, the community, and the chosen artist to facilitate an inspiring artwork that will contribute in a meaningful way to the existing City of Richmond public art conversation.

PROJECT DETAILS

PROJECT ADDRESS	5460-5560 Moncton Street, Richmond, BC
LEGAL DESCRIPTION	5560 Moncton St 9 SEC 12 BLK3N RG7W PL 21084 5540 Moncton St 10 SEC 12 BLK3N RG7W PL 21084 5520 Moncton St 11 SEC 12 BLK3N RG7W PL 21084 5500 Moncton St 12 SEC 12 BLK3N RG7W PL 21084 5480 Moncton St 13 SEC 12 BLK3N RG7W PL 21084 5460 Moncton St 14 SEC 12 BLK3N RG7W PL 21084
TOTAL FSR AREA	56,517 SF
PUBLIC ART BUDGET	\$44,648.43

PROJECT CONSULTANTS

PROJECT DEVELOPER | AMPRI CONSTRUCTION LTD.

9751 No. 6 Road
Richmond, BC V6W 1E5
T. 604 277 8453
F. 604 270 8457

Amit Sandhu | General Manager
E. asandhu@ampri.ca

PROJECT ARCHITECT | LYNDE DESIGNS LTD.

8171 Claysmith Road
Richmond, BC V7C 2K9
T. 604 275 8085

Rod Lynde

LANDSCAPE ARCHITECT | MARUYAMA AND ASSOCIATES LANDSCAPE ARCHITECTS

680, Leg in Boot Square
Vancouver, BC V5Z 4B4
T. 604 874 9967
F. 604 874 9931

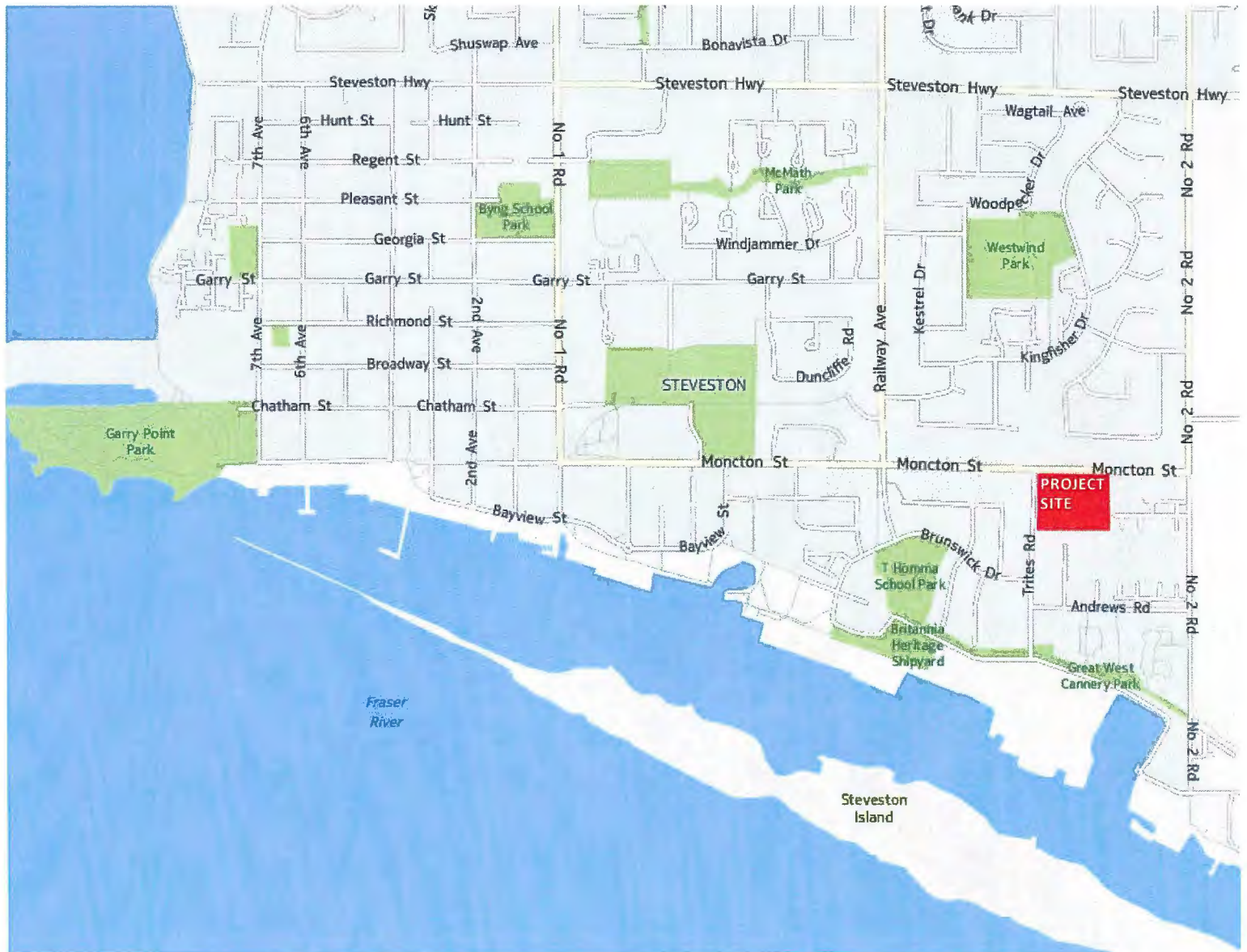
Rod Maruyama | Principal
E. maruyama@telus.net

PUBLIC ART CONSULTANT | BALLARD FINE ART LTD.

1243 Duchess Avenue
West Vancouver, BC V7T 1H3
T. 604 922 6843

Jan Ballard | Principal
E. jan@ballardfineart.com
C. 604 612 6645

CONTEXT PLAN



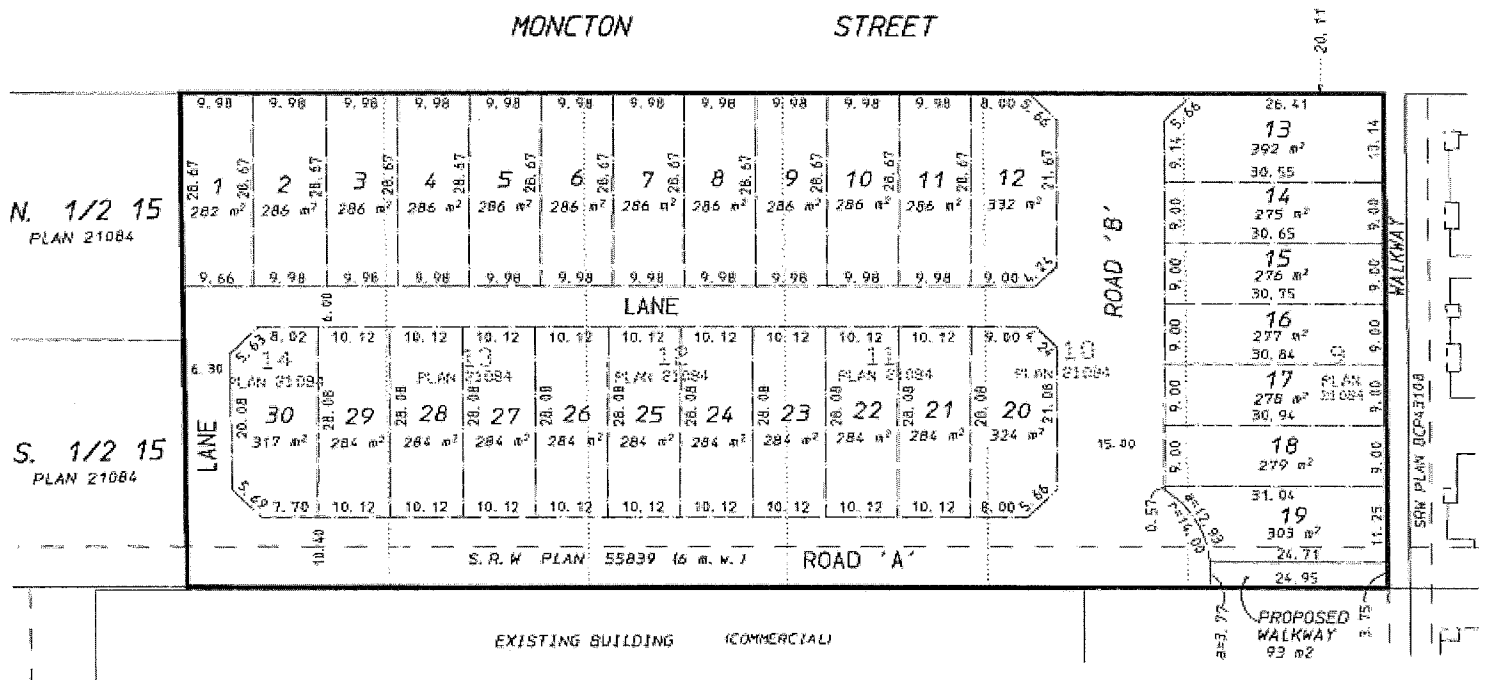
5460-5560 Moncton is located on the south side of Moncton Street, in the heart of Steveston

PROJECT DESCRIPTION

5460-5560 Moncton is a unique single-family subdivision in Steveston, Richmond. The project consists of 30 single-family, freehold homes of approximately 1950 sf each. Located in a community with a rich and vibrant Japanese heritage, Moncton is a key historic street in the heart of Steveston. The project landscape design responds to this important cultural history with the unique inclusion of 500 ft. of Japanese gardens fronting the homes along Moncton Street.

5460-5560 Moncton is bordered by Trites Road to the west, Moncton Street to the north, Andrews Road to the south, and a newly built roadway "Road B" to the east. The addition of this street, located west of the last row of lots along the easterly limit of the site, will improve accessibility throughout development. Another new roadway, "Road A", running parallel to Moncton Street, as well as an internal laneway, will further increase community connectivity, enhancing the family-oriented atmosphere of the entire site.

A variety of developments surround 5460-5560 Moncton, adding to the character of the neighbourhood. To the North, across Moncton Street, is a seniors assisted living complex as well as a number of single-family homes. To the South, fronting onto Trites Road, is an older multi-unit light industrial warehouse development. To the East, across a public walkway and fronting Moncton Street, is a newer 28-unit two-storey townhouse development. To the West, fronting onto Moncton Street and Trites Road is a recent 3-lot single-family subdivision as well as a single family home.

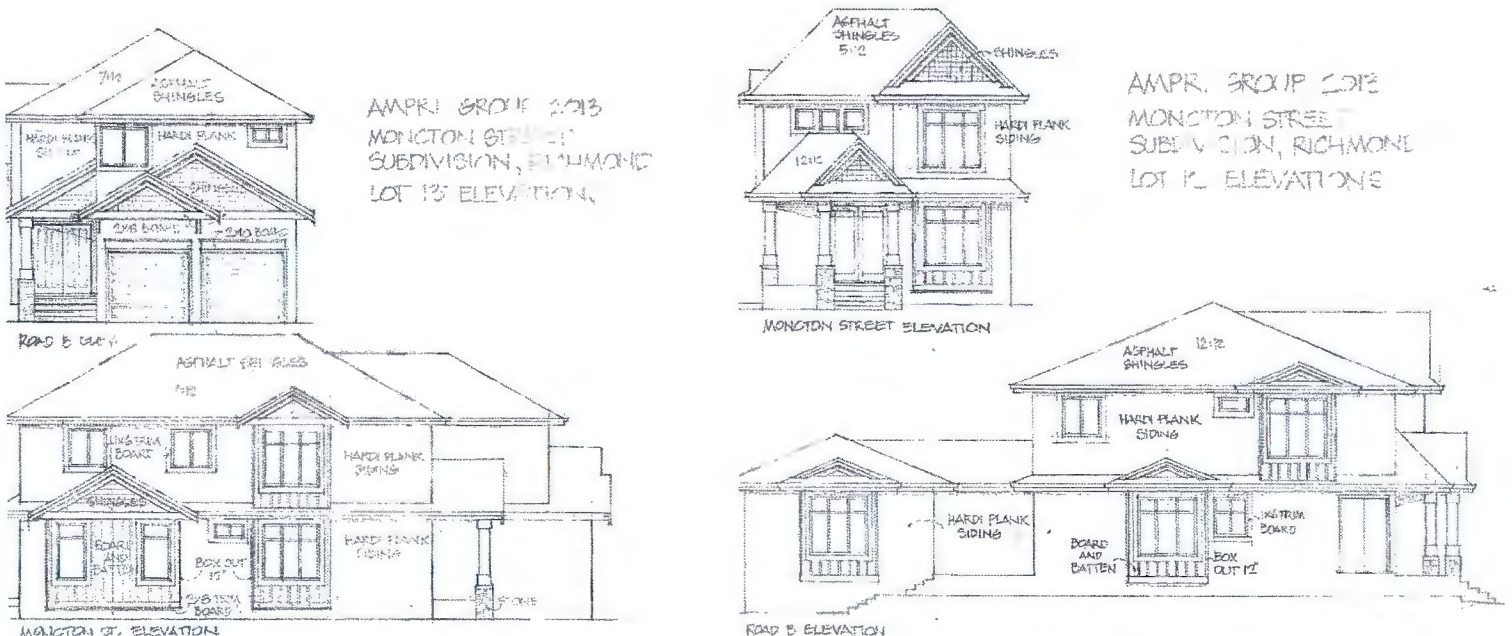


5460-5560 Moncton, view of new Roads A + B and lot division



Precedent images of 5460-5560 Moncton's homes

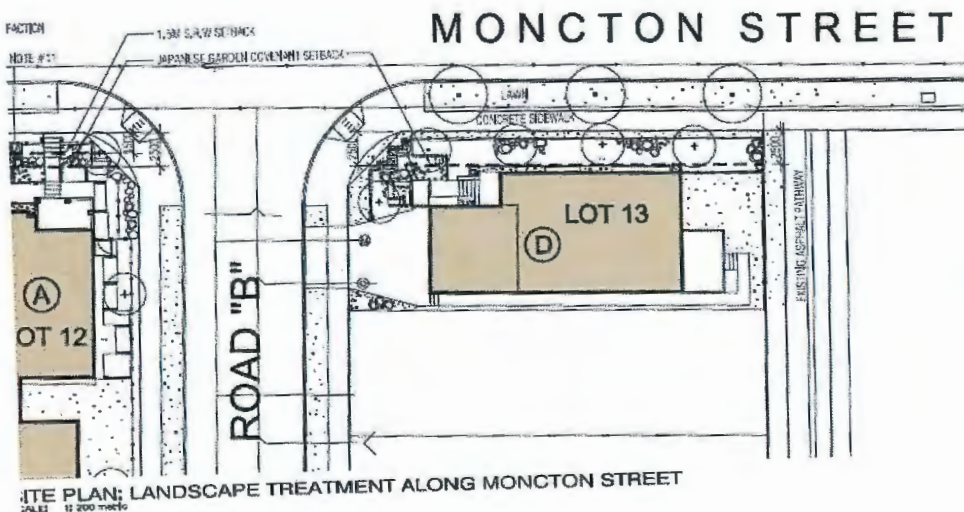
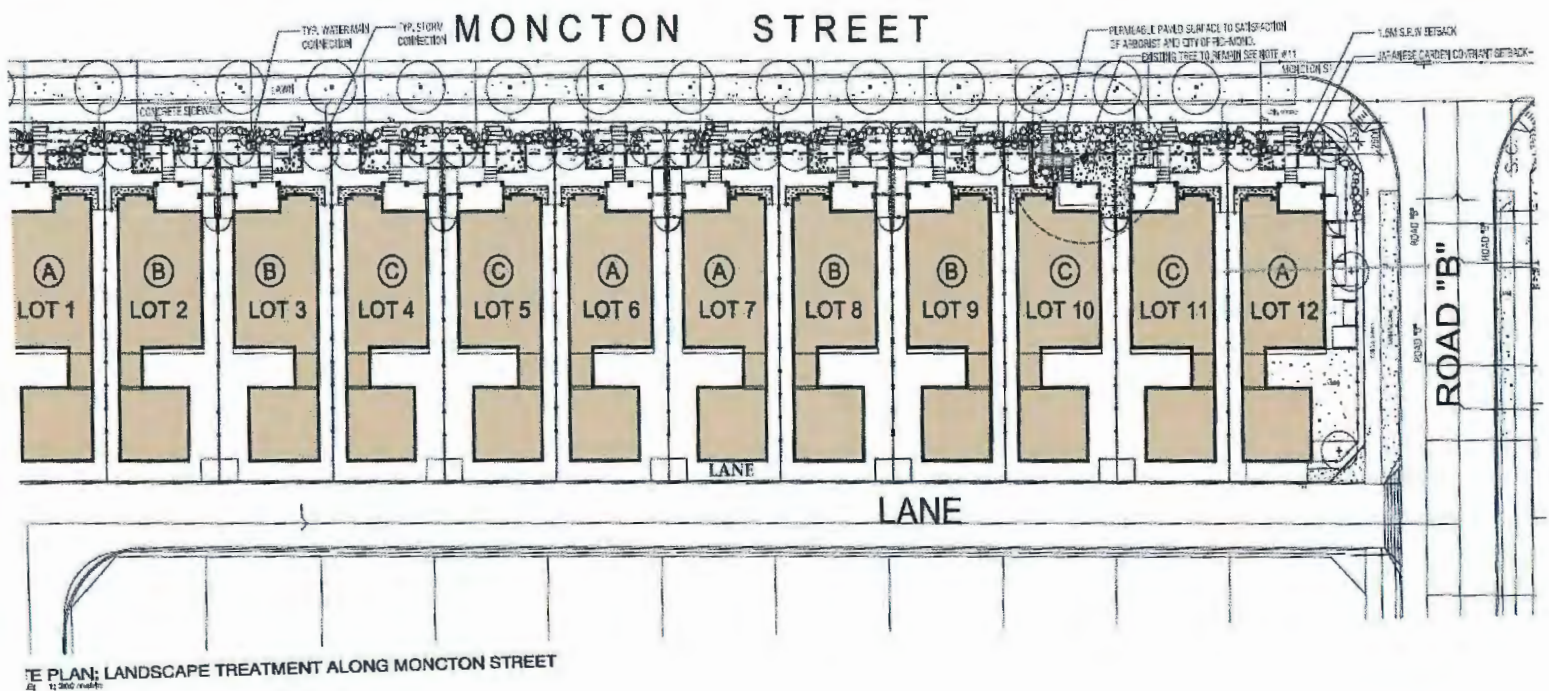
Located only minutes from Downtown Richmond and Vancouver, 5460-5560 Moncton will provide the community of Steveston with unique family residences in close proximity to a number of amenities, including Steveston's boardwalk, fisherman's wharf, and many shops and restaurants. Encouraging an active pedestrian experience that combines the close-knit qualities of small-town living with the ease of an urban environment, Ampri is committed to building homes and communities where families can dream, grow and inspire.



Sketches of 5460-5560 Moncton homes

LANDSCAPE PLAN

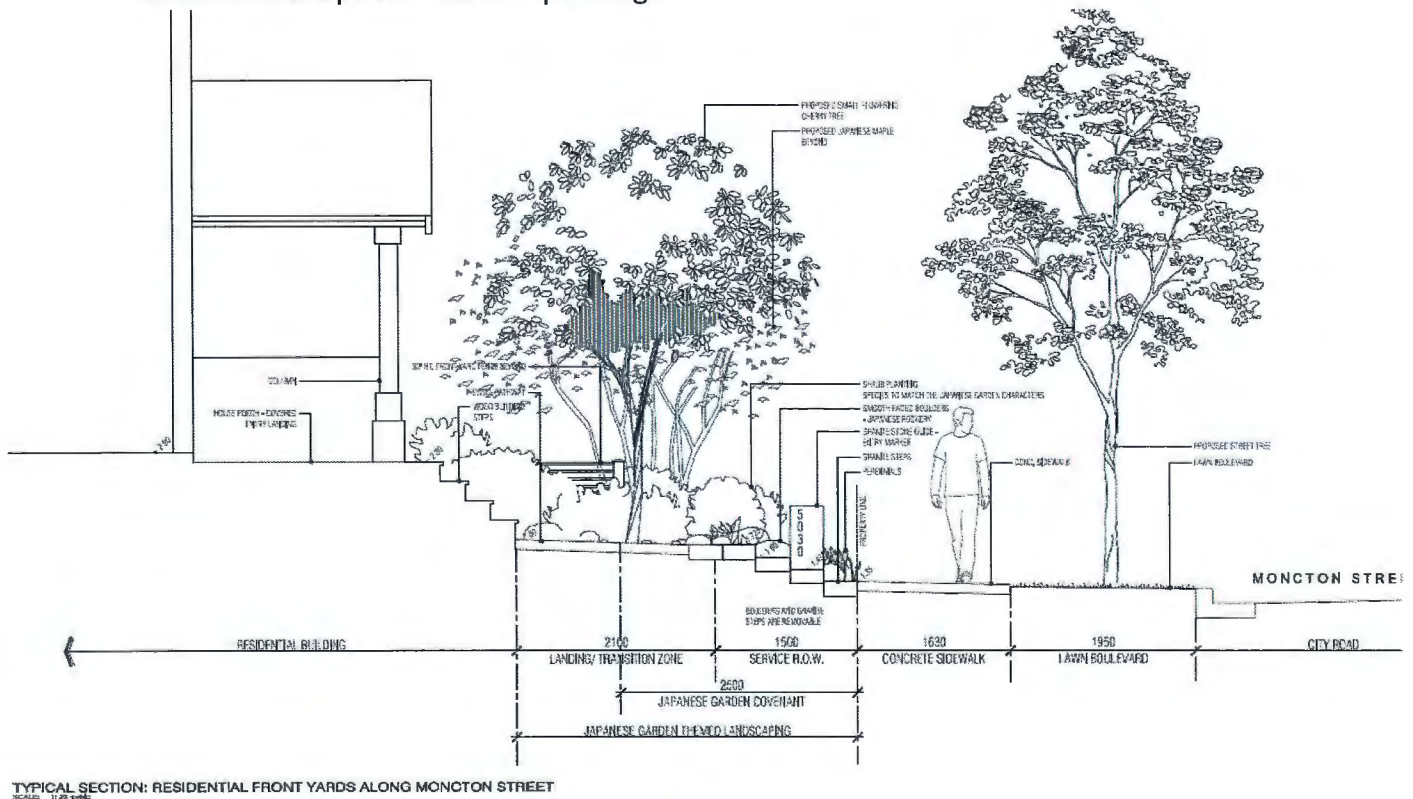
5460-5560 Moncton is envisioned as a vibrant community environment. Benefitting from the unique historical context of Steveston, 5460-5560 Moncton's landscape plan will work in concert with the architecture to create a family-friendly and welcoming public realm. Responding to the rich social and cultural history of its surroundings, 5460-5560 Moncton will foster an inclusive space for living that acknowledges the past while celebrating the present.



Existing home on Moncton Street with Japanese Garden

The City of Richmond's Heritage Inventory has identified the privately owned "Japanese Gardens" that front the current homes along Moncton as a landscape heritage resource. Consisting mainly of foliage plants, with some flowering species and the occasional annual, the gardens express the character of traditional Japanese garden style. This traditional garden style is a visible reminder of the important role Japanese culture has played in the development of Steveston and Richmond. In recognition of this history, Ampri is proposing to install Japanese themed gardens beside the sidewalk along the Moncton Street frontage of the site. These gardens will enhance the built environment of Moncton Street, creating a unique cultural enclave while strengthening sense of place. The gardens will have symbolic connections to Japanese culture, speaking to the history of the many migrants that came to the area. The gardens will use the traditional design principles of continuity, balance and scale, while reflecting local climate, available plant species and individual taste.

The inclusion of materials other than plants, comprising small-scale elements such as stone lanterns, boulders, and gravel will be used to symbolize dry ponds and streams between islands of planted areas. Ampri will also plant a total of 68 new trees on site, including 50 deciduous trees and 18 coniferous trees. Street trees for the city boulevard are proposed to be Japanese Katsura to portray and strengthen the Japanese character and themes, while Japanese Maples and Japanese Cherry Trees have been introduced in the single-family lots to reinforce the Japanese themed plantings.



COMMUNITY CONTEXT



Aerial view of Richmond, including the Fraser River

5460-5560 Moncton is sited in the heart of Steveston, located in the southwest portion of Richmond along the South Arm of the Fraser River. Founded as a small town in 1880 by William Herbert Steves, Steveston's history is closely tied to the Fraser River. For thousands of years prior to European arrival, the Coast Salish peoples used the area for harvesting berries and fishing salmon, either setting up seasonal dwellings or permanent residences on the 17 islands at the mouth of the river.



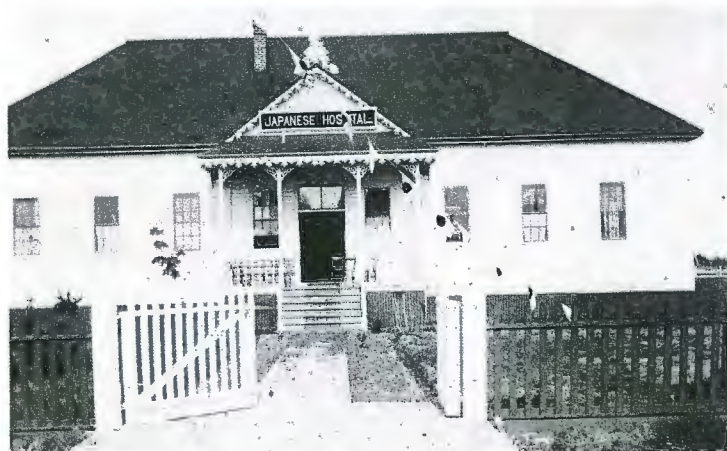
Steveston, photo undated



'Cannery Land', Gulf of Georgia Cannery, Steveston, photo undated

In the 1860s, drawn to the rich delta soil, pioneer farmers settled the area and began clearing, dyking and draining the land for agricultural purposes. In the 1870s, fishing and salmon canning emerged as a major industry for Steveston, encouraging the migration of many fishers, including those of First Nation, Japanese, Chinese and European heritage, to the area. By the 1890s, there were nearly 50 canneries, including the Gulf of Georgia Cannery, along the Fraser River, half of which were located in Steveston. Alongside the thriving fishing industry, boat-building also flourished. Many international ships made their way to Steveston to collect salmon, creating an abundant waterfront port community. As Steveston grew, so did surrounding Richmond. The first bridge to the mainland was built in 1889, creating an important linkage to neighbouring communities. The railway, built in 1902, created further opportunities for connection, as did the development of an airport on Sea Island in 1931, known today as Vancouver International Airport.

The Second World War was a challenging time for Richmond, as many of its Japanese citizens were unjustly sent to internment camps. Prior to the war, Steveston's Japanese community numbered about 2,000, making up more than two-thirds of Steveston. The Japanese people were a central part of Steveston's early history and played an integral role in bringing the community to life, with the Japanese Fisherman's Benevolent Society raising funds to build a school as well as Richmond's first hospital. After the war, the community began to grow again, and more Asian immigrants arrived in Richmond, including many people from China and Hong Kong.



The Japanese Hospital, circa 1900



Japanese children on a Steveston dock, 1936

CNCL - 409



Pedestrians in the Street for the Annual Salmon Festival



Children play at the present day Georgia Cannery

Today, Steveston remains an active fishing port with a lively, animated waterfront and charming heritage character. Steveston boasts a number of amenities, including local and independent shops, restaurants, cafes and historic buildings. Community amenities in the area of 5460-5560 Moncton include the Steveston Community centre and Pool, as well as Tomekichi Homma Elementary. 5460-5560 Moncton is also in close proximity to world-class greenspaces, trails and parks, including Garry Point Park, Imperial Landing Park, Great West Cannery Park, Westwind Neighbourhood School Park, and Steveston Square Park, currently being redeveloped. Steveston's diverse and culture-rich history is celebrated through a number of festivals, community activities, museums and National Historic Sites. These include the Salmon Festival and Maritime Festival, the Steveston Farmers Market and Asian Summer Nights Market, as well as the Gulf of Georgia Cannery Museum, housed in the original waterfront facility built in 1894, the Japanese Fisherman's Benevolent Society Museum, located in a newly-restored former office building from the 1890s, and the Britannia Shipyards. Community organizations such as the Steveston 20/20 Group and the Richmond Arts Coalition play a key role in celebrating the many important moments of Steveston's history, honouring diverse historic elements of the past while creating dynamic and inclusive plans for the future.

5460-5560 Moncton seeks to install an engaging public artwork that will work in tandem with the existing historic infrastructure of Steveston. The public art opportunity at 5460-5560 Moncton will improve the public realm and benefit the surrounding neighbourhood, supporting the close-knit and historically important community of Steveston.

PUBLIC ART CONTEXT

The City of Richmond's Public Art Program is committed to offering public access to contemporary art and ideas, activating community participation within the city's public spaces. The Public Art Program's aim is to cultivate a public art collection that energizes public space, increasing connectivity while inspiring thought and dialogue. Richmond's public art collection currently includes over 100 artworks ranging in scope, size, medium, theme and acquisition dates. Transforming sites of work, live and play into welcoming, engaging and enjoyable environments, these artworks are a source of civic pride for the City, contributing in a meaningful way to the cultural fabric and identity of local communities.

Public artworks in the Steveston Waterfront Neighbourhood tell unique stories about the area's past and present, creating an interwoven dialogue and enlivening the public realm. Below is a brief summary of Steveston's existing works, in close proximity to the 5460-5560 Moncton development.

Back on Track, Mia Weinberg (2013), 4011 Moncton Street

Back on Track is a map integrated into the floor of the Steveston Interurban Tram Building entrance walkway. The map represents the 1956 BC electric interurban tram route, including station markers from Steveston all the way north along the Fraser River.

Crossover, Carlyn Yandle (2011), Moncton Street and No. 1 Road

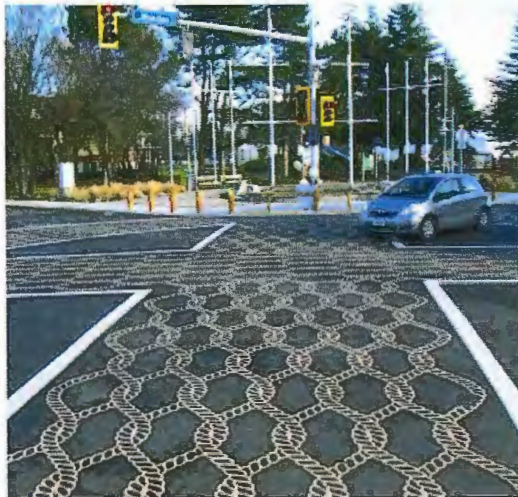
Crossover is located at the crosswalk intersecting Moncton Street and No. 1 Road. Featuring a simple white netting pattern, *Crossover* has been abstracted to suggest both fish scales or schools of fish, referencing Steveston's rich fishing history.

Japanese-Canadian Fisherman's Statue, Junichio Iwase (2002), Imperial Landing Park

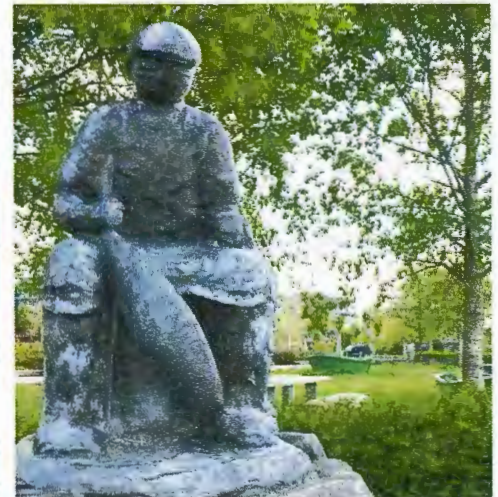
Dedicated to the pioneering Japanese fishermen of Steveston, this bronze memorial statue also commemorates the generations that followed and have continued to contribute the fishing industry in British Columbia.



Back on Track, Mia Weinberg, 2013



Crossover, Carlyn Yandle, 2011



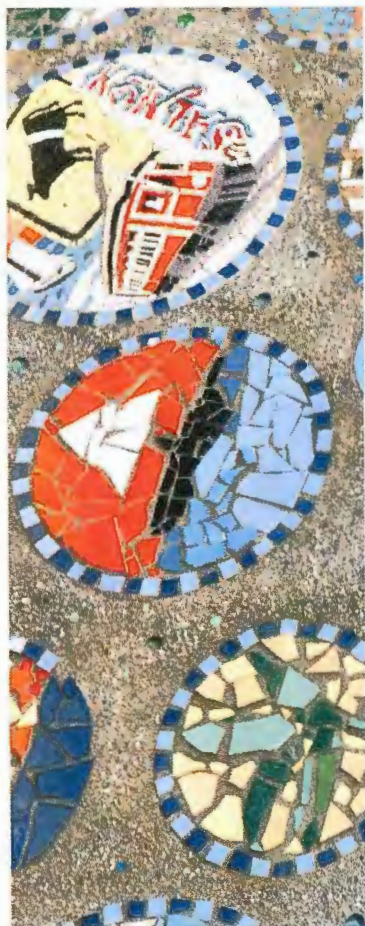
Japanese-Canadian Fisherman's Statue, Junichio Iwase, 2002

Steveston Community Centre "Bubbles" Mosaic, Bruce Walther (2008), Moncton Street at Easthope Avenue

Located in the garden of the Steveston Community Centre, this artwork is a collaborative project between the artist and local youth. Depicting elements of Steveston's culture and history, this mosaic consists of 18 individual image "bubbles".

Steveston's Fisherman's Memorial, G. Juhasz and G. Schemerholz (1996), Garry Point Park

Located at Garry Point Park, this memorial is for fisherman lost at sea. A tall net and needle as well as a bronze mural depict fish boats and sea life, with the names of the lost listed on a nearby wall.



"Bubbles Mosaic"
Bruce Walther, 2008



Steveston's Fisherman's Memorial, G. Juhasz and G. Schemerholz, 1996



Steveston's Legacy, Norm Williams, 2009



Utility Box Art Wraps, Andrew Briggs, 2015

Steveston's Legacy, Norm Williams (2009), Georgia Cannery

Supported by a number of local community members, groups and associations, Steveston's Legacy features a sculpture of three fishing industry workers in a typical 1930s scene.

Utility Box Art Wraps, Andrew Briggs (2015), various locations

Wrapped in historical Steveston images, these three utility boxes are located outside the Gulf of Georgia Cannery, at the intersection of No.1 Road and Moncton Street, and at the No. 1 Road Drainage Pump Station.

GUIDING PRINCIPLES FOR PUBLIC ART

- Reflect the vision and spirit of the 5460-5560 Moncton Project
- Thoughtfully consider the historic, social, cultural and community contexts
- Integrate well to the site, public realm, architectural and landscape design
- Provide an artwork that is dynamic, energizes public space, and creates a welcoming and enjoyable environment for residents, visitors and passersby
- Offer maximum public accessibility, visibility and engagement

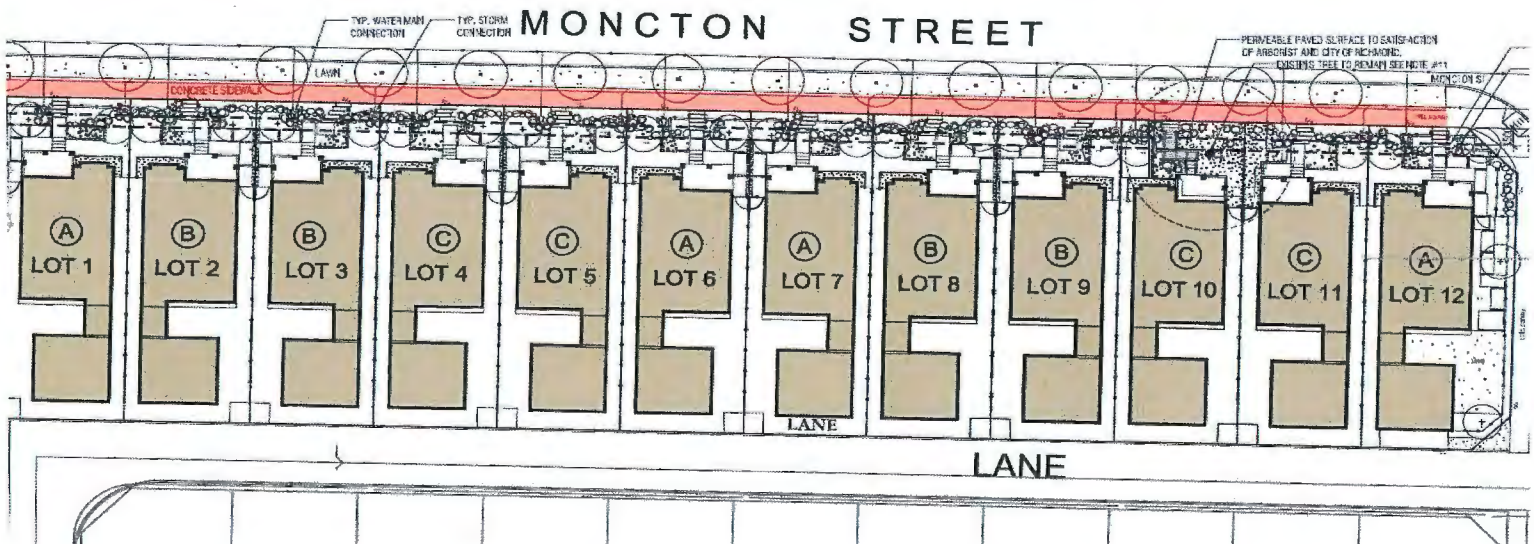


Steveston Harbour

PUBLIC ART OPPORTUNITY

The public art opportunity for 5460-5560 Moncton Street has been identified as the sidewalk fronting Moncton Street. Allowing for a range of possible materials and approaches in 2D media, the public art will be developed on City lands. The length of the sidewalk fronting Moncton Street measures approximately 400 ft. The consideration of safety and maintenance will be of paramount importance. Responding to aspects of the social, historic and community contexts of the site and surrounding area, the public artwork will consider the building and landscape design, integrating into the site and offering maximum public visibility, engagement and enjoyment for residents and visitors to the site. Importantly, the development's location on the historic and ceremonial road of Moncton Streets offers the occasion for an artist to engage with the unique history of Steveston and surrounding Richmond, recalling the multi-faceted cultural history of the area.

In considering the surrounding contexts and site specificity of Steveston's legacy, the artwork will contribute to 5460-5560 Moncton's immediate public realm, enhancing the historic, cultural and aesthetic significance of the City of Richmond's public art collection overall. The artist selected for the project will be given as much creative license as possible to respond to the proposed public art opportunity, and will be selected early in the development process. As an integral member of the design team, the artist will also have the opportunity to consult with a number of Richmond's cultural organizations, including the Steveston 20/20 Group and Richmond Arts Coalition.



Public Art Opportunity along the sidewalk fronting Moncton Street

PUBLIC ART BUDGET

The total public art budget for the 5460-5560 Moncton Development project adheres to the City of Richmond's Public Art Policy, calculated as \$0.79 for each residential buildable square foot. A total Public Art Contribution of \$44,648.43 is based on the project development of:

$$56,517 \text{ SF} \times \$0.79 = \$44,648.43$$

The total for the Public Art Project is **\$37,951.17** (85% of the Public Art Contribution) and includes the public artwork, selection process and honoraria costs, and a developer's contingency.

The amount designated for the artwork includes: the artist fee, artwork fabrication, artwork storage, artwork delivery, artwork installation to its approved stage by the city of Richmond, all consultant fees, engineering certificates, construction coordination and site preparation, lighting, insurance and all applicable taxes. The artist selected may be responsible for a general public liability insurance policy depending on the artwork.

Any unused funds remaining from the contingency fee will be put towards the artwork.

Total for Public Art Project (85% of the Public Art Contribution)

Public Artwork	\$34,500.00	
Selection Process and Honoraria	\$ 2,000.00	
Developer's Contingency	\$ 1,451.17	\$37,951.17

Administration Allowance (15% of the Public Art Contribution)

Public Art Program Administration (5%)	\$ 2,232.42	
Public Art Consultation Fee (10%)	\$ 4,464.84	\$6,697.26
Public Art Contribution		\$44,648.43

TIMELINE

PROJECT TIMELINE

All City Infrastructure will be built before the BP applications are submitted for each lot. Therefore the estimated dates provided below are for the road construction rather than the home building construction schedule. Public Art will be integrated within the construction of this public infrastructure as the homes will be built later.

Rezoning and Development Permit Approval..... March 2016
BP/ Approval n/a
Construction Start August 2016
Completion of Project..... August 2016

PUBLIC ART TIMELINE

Preliminary Public Art Plan Submitted February 2016
Detailed Public Art Plan Development March/April 2016
City Detailed Public Art Plan Presentation April 19, 2016
Review Long-list of Artists April 2016
Determine Short-list of Artists late April 2016
Short-listed Artists' Invitation late April 2016
Proposal Presentation by Short-listed Artists..... late May 2016
Final Artist Selection from Short-list..... late May 2016 Artist
Contract June 2016

Art Installation August 2016

* DATES ARE BEST ESTIMATED TARGETS AND SUBJECT TO CHANGE

SELECTION PROCESS

All stages of the selection process will be facilitated by art consultant Jan Ballard. The selection process will be a two stage invitational to professional artists in Richmond/Steveston involving an artist selection committee.

The artist selection committee will consist of three members, with 1 representative from the developer, and 2 representatives from the Richmond/Steveston community. Members of the selection committee, excluding members from the design team, will be paid a \$250 honorarium for their participation.

In addition, the Steveston 20/20 Group and Richmond Arts Coalition will be invited to participate in an advisory capacity for the duration of the selection process. These organizations will play an integral role in the selection of public art, providing a voice for the community as well as guidance regarding opportunities for additional storytelling, education and celebration of the work upon completion.

Proposed selection committee members are:

Sarah Glen, Executive Director, Steveston Historical Society

Joyce Kamikura, Japanese Cultural Society

Amit Sandhu, Developer Representative, CEO, Ampri Construction Ltd.

Alternates:

Bud Sakamoto, Japanese Cultural Society

Chiyako Hirano, Nikkei Community

Linda Barnes, Vice President, Steveston Historical Society and Chairperson, Steveston 20/20 Group

Stage One

In stage one of the selection process, the selection committee will be oriented to the 5460-5560 Moncton development project, the surrounding contexts and the public art opportunity. Jan and the selection committee will research and nominate a long list of 14-16 artists for consideration. The selection committee will collectively review the long list and develop a short list of 3 artists to present a Public Art Concept Proposal.

Stage Two

In stage two, the 3 short-listed artists will be oriented to the development project, the surrounding contexts and public art opportunity. They will be invited to develop and present a Public Art Concept Proposal to the selection committee. The 3 short listed artists will be provided with an honorarium of \$500 for their proposal. The honorarium will be paid upon receipt and presentation of the Public Art Concept Proposal. Following the selection committee's review of the short listed artists' proposals, a final artist and artwork will be selected. Prior to notifying the final artist selected, the developer and project design team will have an opportunity to review the selected artist proposal. The final artist team selected will enter a contract agreement with Ampri Construction Ltd. to complete the proposed artwork on time and budget prior to the completion of public infrastructure.

SELECTION PROCESS

Artist Selection Criteria for Stage Two

- High quality and innovative concept with a clear vision of the final artwork
- Demonstrated understanding of the public space and the impact on the proposed site
- Understanding of the project architecture, history of the site and its cultural contexts
- Demonstrated feasibility in terms of a detailed budget, timeline, implementation, safety, maintenance and site consideration
- Artistic quality of artwork presented in the documentation of past work
- Availability

*Please note: If no submission warrants consideration, the developer reserves the right not to award the commission.

Please direct any questions to:

Jan Ballard | Ballard Fine Art Ltd.

O. 604 922 6843 | C. 604 612 6645 | E. jan@ballardfineart.com

**Contemplation of the four seasons:
A POETS' PROMENADE**

Jeanette G. Lee

ART CONCEPT PROPOSAL for 5460-5560 Moncton, Steveston, BC

The word “promenade “ in the English dictionary defines itself as a “walk in a public place for pleasure”. The word “promenade” in the Japanese context originally, always featured a pathway for strolling designed to complement the home and allow communal time with nature.

The Poets’ promenade artwork is inspired by combinational ideas of both the western and the heritage Japanese promenades.

Along the walkway on Moncton Ave, imaged into the sidewalk, are imprinted stepping stones—like open forms. These forms are created by imprinting hand made steel stamps into the pavement surface. They give the impression of a purposeful stone trail through a lovely garden, with their varying sizes and shapes bounded together with “root” like arms.

Some of the larger “stones”, forms hold text from one of the greatest haiku poets, Matsuo Basho. These thin open stamp forms along with the text, are created from high grade stainless steel sheets and embedded into the concrete sidewalk.

The poems are selected from the spring, summer, autumn and winter of Bashos’ journeys and the “four seasons” of thought bring the traveler on this trail symbolically through the many “seasons” of life. Below are examples of Basho’s haiku written in the Spring and in the Fall of his travels:

“ butterflies and birds
 ceaselessly fluttering
 clouds of blossoms....”

“on a withered branch
 a crow has settled
 autumn evening...”

Basho’s haikus will be translated by Keiko Kimura Parker, a credible and well known translator of three published Jane Austin novels in Japan .There are eight haikus selected with their stainless steel text offset from the centre of the walking path and highlighted from the imprinted “stone patterns” almost like wistful, ephemeral, contemplative thoughts as one moves along the sidewalk.

They have an intentional, syncopated spacing over the 387 ft. (118 m) sidewalk frontage as a metaphor for how thoughts move in and out of our minds as we stroll down a path.

Stainless steel was chosen as the embedded highlighted material because of its beauty and longevity. It requires little or no maintenance as next to the metal gold, it is the least corrosive metal to the elements. This metal compliments the “garden” frontage of the new homes, with its peaceful, tonal quality and yet its presence is noteworthy and elegant and because it offsets the imprinted “stone- liked pattern on the sidewalk. It does not compete with the natural beauty of the gardens but rather enhances the experience of this area. The rhythm of the inlayed steel and its spacing allows for moments of contemplation. There will be the random “leaf” life form falling around the path journey near the autumn haiku texts. This form too is inspired by the Japanese heritage plantings.

The stainless steel, with its natural colour properties is surfaced with an abraded finish (optional) giving it a non-slippery texture for the safety of pedestrian traffic. Please also note that the actual surface area of this metal for my concept is very minimal, and less than or equal to the surface area between bumps on the steel treads that are used on city sidewalks.

The embedded pieces are relatively thin, almost like drawing into the surface with steel. The imprinted stone- like forms are wider for clarity of image on the concrete sidewalk and will meet requested safety depth standards required. They may be enhanced with either stain or custom macro-epoxy paint. They are connected by “root-like” impressions. These “root-like” connectors are inspired by the root patterns of the Japanese iris and the Japanese crab apple tree and symbolically paying homage to the strong Japanese “roots” to this area. It is a thing of beauty and like the root imprints and steel, deeply embedded in this area of Richmond.

© Jeanette G. Lee
May 2016

POETS' PROMENADE



Rough chalk drawings on a sidewalk to illustrate the scale of the pathway design. The solid areas would hold the written words.

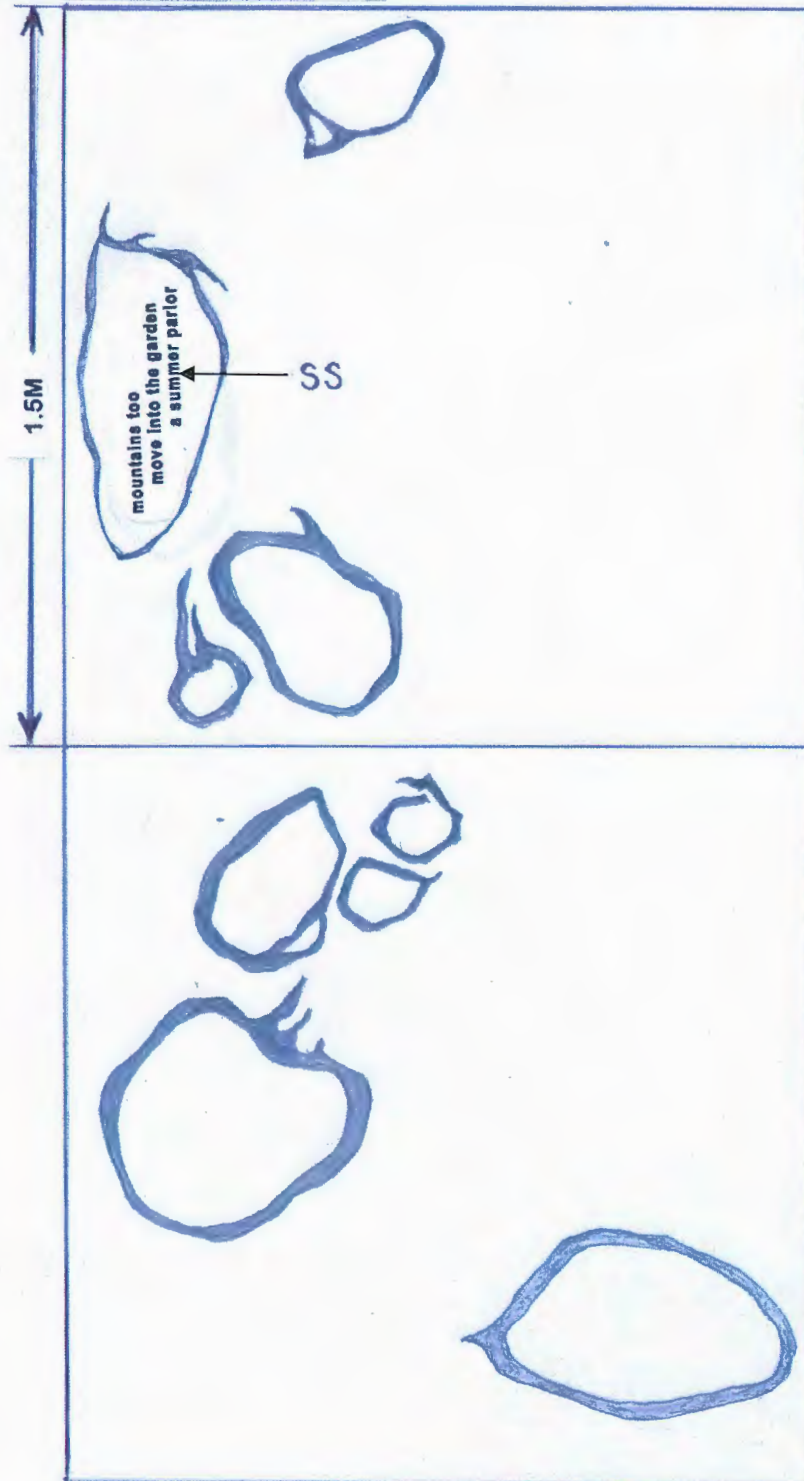
Left photo: forms over 10.5 metres

Right photo: forms over 9 metres

A POETS' PROMENADE

2.

POET'S PROMENADE



TOP VIEW OF SIDEWALK

A POETS' PROMENADE - Detailed Budget
Jeanette G. Lee

ARTIST FEE, DESIGN, REVISION, SCHEDULING,CONSULTATION
Concept development, written proposal, sketches,
detailed drawings, development meetings,
Photo documentation \$2,500.00

EXECUTION AND MATERIALS

4'x 8' sheets of 3/16th" stainless steel	11,000.00
Surfacing(wheel abrading) to non-skid texture	1,500.00
Scan conversion drawings	1,000.00
Laser cutting and fabrication of design	5,000.00
Stainless steel concrete anchors	5,000.00
Welding and cutting and finishing of steel	

ADDITIONAL COMPREHENSIVE GENERAL LIABILITY
INSURANCE (2,000,000) if required by Richmond City Administrative
fee 100.00

Transportation and shipping of steel sheets to be
surfaced and then cut. Delivery of pieces to the site 400.00

Installation 500.00
Contingency fee 3,000.00

TOTAL \$30,000.00

A POETS' PROMENADE - PROJECT TIMELINE

Jeanette G. Lee

July 2016: confirmation of artist by the City

August: consultation meetings to review details, open discussions, and complete contractual agreement. Commencement of project. Order stainless steel.

August 2016

Complete detailed scan conversion drawings and scale details.

Prepare abraded Stainless steel surface
for cutting

Complete all preparation work for laser cutting. Order concrete
Anchors.

August 2016

Laser cutting

Mid-August this is only an approximation. It is possible that the work may
be completed earlier but I am being cautious.

Laser cutting completed. Concrete anchors to be welded by mid-August.

Installation

Construction coordination and site preparation. Plan date of concrete
pouring to embed stainless steel artwork at end of the month-weather
dependent: has to be a dry day.

September 2016

Project completed if weather at the end of September allows for the
concrete pour of the sidewalk

CURRICULUM VITAE

JEANETTE G. LEE, artisticallyyours@hotmail.com. Cell 778 888 2854

Education

Royal Conservatory of Music, Toronto, ONT.

A.R.C.T. Associateship degree from the Royal Conservatory of Music

University of British Columbia, Vancouver,

B.C. Bachelor of Arts, Teaching certificate

Arts Students League of New York, New York City, NY, USA

4 Year Diploma Completed, Post Graduate study with Sculpture Major

Sculpture Centre of New York, New York City, NY, USA 1992, Artist in Residence

Studio School of the Aegean, Samos, Greece

1995 Guest Artist

1989, Artist in

Residence

Awards

2013 Richmond City Arts Award for Artistic Innovation, Richmond City, B.C.

1993 Edward and Rosalind S. Roberts Foundation Grant, New York City,

NY **1992** Samuel May Rudin Foundation Grant, Sculpture Centre, New York City, New York

1991 Samuel May Rudin Foundation Grant, Sculpture Centre, New York City

1990 "Individual Artist" Grant from the Artist's Space of New York City,

NY Program sponsored by the New York State Ministry of Cultural Affairs

1988 Nessa Cohen Memorial Scholarship for Sculpture, New York City,

NY Purchase Prizes for Drawing and Sculpture, Concourse Gallery, Arts

Students League of New York, New York City, NY

1987 Kimon Nicolades Scholarship, Art Students League of New York City

1986 Merit Award for Drawing, Art Students League of New York, New York

1984 Elmore Ozard Art Award, University of British Columbia, BC

Commissions:

2016 City of Vancouver, Big Print Project, art of woodblock printmaking as a public event and exhibition.

2013 West Richmond Community Centre, Artwork in collaboration with the community entitled "RISING", City of Richmond

2012 -ongoing, development phase, history inspired sculpture funded by H.A.M.P., DTE and City of Vancouver

2010-2011 **Richmond Nature Park**, City of Richmond, B.C. Seven Sculptures entitled "GREEN SYMPHONY".

2010 **Nanjing High School Campus, Nanjing China**, design only for two sculptures on Campus site entitled "NUCLEI" and "WORLD OF KNOWLEDGE".

2005 Paulik Neighbourhood Park, City of Richmond, B.C. Art entitled, "HOUSE OF ROOTS".

2001 Savics Building, West Vancouver, BC . 11 works entitled "STORIES" **1997 YWCA Building**, Vancouver, B. C. 100th year celebration. Sculpture created for the new site and entrance called "THE INNER WORLD"

1995 The Diamond Center for Living, Vancouver, B. C. Title of art: THE TREE OF LIFE

Solo Exhibitions:

2000 Richmond Art Gallery, Richmond, BC, New completed work" The Ringing Earth" installation

1999 Third Avenue Gallery, Vancouver, BC, The Ringing Earth, 1st Movement

Third Avenue Gallery, Vancouver, BC. Inaugural Exhibition

Galaria Kunst, Chur, Switzerland. New Works.

1994 Richmond Art Gallery, Richmond, BC

1993 Galaria Kunst, Chur, Switzerland. Exhibition opened by the Consulate General's Office of Canada, New York

1990 Home: Contemporary Art Gallery, New York City, New York

1985 Langley Exhibition and Museum Centre, Langley, BC

Collections

University of British Columbia, BC

Arts Students League of New York, USA

Sol Lewitt Collection, Connecticut, USA

Richmond Art Gallery & Museum Centre, BC

Fukuyama Museum of Art

A Few Selected Articles

"ART PROJECT A COMMUNITY AFFAIR" written by Alan Campbell, Richmond News, July 26, 2013

"2013 RICHMOND ARTS AWARDS", Congratulations to the Recipients of the 5th Annual Richmond Arts Award, The Richmond News, May 15, 2013

'GREEN SYMPHONY, SEVEN SCULPTURES AT RICHMOND NATURE PARK, written by Kari Huhtala, MCIP, Feature cover article.

"NATURE PARK IS ONE OF CITY'S GEMS BY SUE HALSEY-BRANDT, RICHMOND NEWS SEPTEMBER 7, 2011

"HOUSE OF ROOTS UNVEILING", Anthony Au, Singtao Newspaper, Richmond, June 26, 2005

"NEW NEIGHBORHOOD PARK OPENS, by Marin van den Hemel, Richmond Community News, June 30, 2005

NEW McLENNAN SOUTH NEIGHBORHOOD PARK, by Sharon Doucette, Richmond News, June 29, 2005

Stories from a Ming Garden – Jeanette G. Lee



House of Roots- Jeanette G. Lee



Green Garden – Jeanette G. Lee



Rising – Jeanette G. Lee

