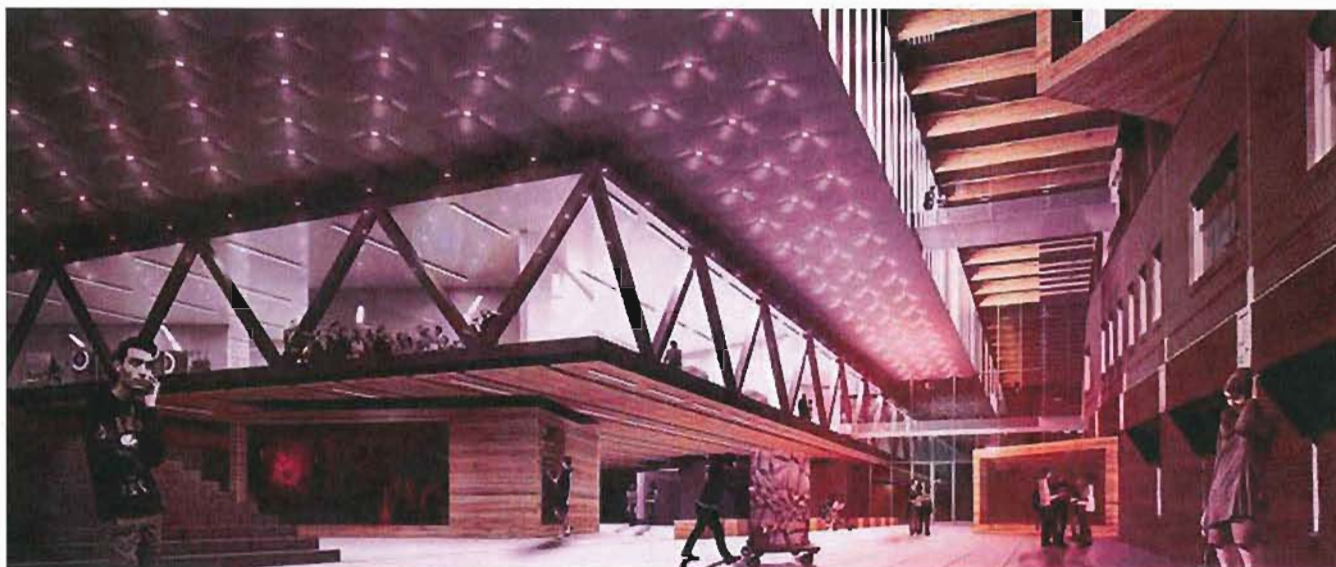


Kwantlen News



For immediate release

August 15, 2013

Exclusive 3D preview of Chip & Shannon Wilson School of Design

Metro Vancouver, BC – KPU Richmond will be hosting an exclusive 3D preview and virtual tour of the upcoming Chip and Shannon Wilson School of Design, a \$36-million industry-leading facility that will be a hub for fashion and design in Metro Vancouver.

The state-of-the-art expansion was made possible by a generous \$12-million gift from Shannon and Chip Wilson, and lululemon athletica; a donation matched by both the province and KPU. Over the next three years, the building will become the focal point of the campus, the catalyst that transforms KPU Richmond into a “destination university” for fashion and design students from B.C., Canada and abroad.

Both Chip and Shannon Wilson will be attending the event on August 20, along with representatives from KPU, leaders in the fashion industry, community representatives – including Richmond Mayor Malcolm Brodie – and the design team behind the project.

The open-house will provide an opportunity for students, industry and community members to learn more about the Chip and Shannon Wilson School of Design, and the programs it will facilitate. It’s also the chance to be one of the first to explore the new facility with an architecturally accurate 3D virtual tour.

Where: KPU Richmond, 8771 Lansdowne Road, in the Rotunda on the Main Floor

When: 4:30 – 7 p.m.

Info: Refreshments and complimentary parking will be available.

The new School of Design will offer innovative education in fashion, interior and product design and graphic design for marketing. It will house an advanced research space that fosters collaboration between designers, strategic technologists and industry leaders. Once complete, the new facility will increase on-campus academic space by 124 per cent.

GP - 11


Kwantlen Polytechnic University has been serving the Metro Vancouver region for 30 years, and has opened doors to success for more than 250,000 people. Four campuses—Richmond, Surrey, Cloverdale and Langley—offer a comprehensive range of sought-after programs, including business, liberal arts, science, design, health, trades and technology, apprenticeships, horticulture, and academic and career advancement. Over 18,000 students annually have a choice from over 200 programs, including bachelor's degrees, associate degrees, diplomas, certificates and citations. Learn more at www.kpu.ca.

-30-

For more information about KPU, contact:

Hayley Woodin
Media Specialist
Tel: 604.599.2883
hayley.woodin@kpu.ca

Copyright © Kwantlen Polytechnic University



SOMETHING SPECTACULAR IS HAPPENING

AT KPU RICHMOND



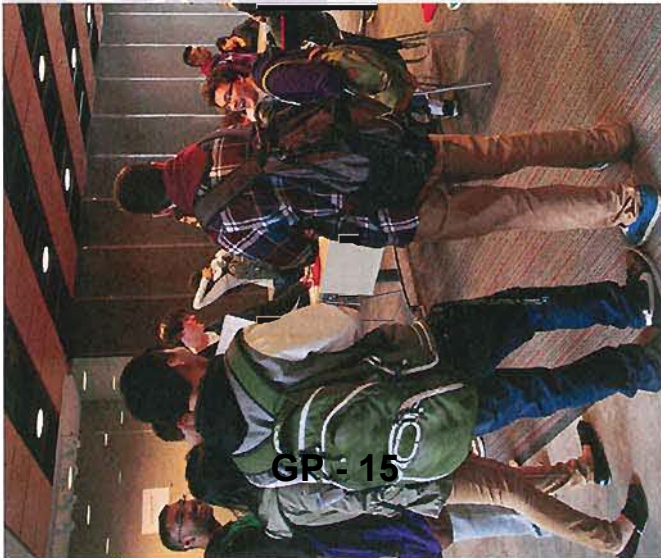
CONSTRUCTION HAS BEGUN ON THE NEW CHIP AND SHANNON WILSON SCHOOL OF DESIGN,

an **iconic building** that will **stimulate**
creativity and **foster innovation.**



As construction progresses over the next two years, KPU Richmond will begin its transformation into a campus like no other.

KPU Richmond's new Chip and Shannon Wilson School of Design will be the focal point of this transformation. A \$12-million gift from Shannon and Chip Wilson and Lululemon Athletica will be matched by the Province of BC and KPU, creating a \$36-million facility that will inspire innovation and leadership.



GR - 15

THE NEW CHIP AND SHANNON WILSON SCHOOL OF DESIGN WILL BE HOME TO:

INNOVATIVE DESIGN EDUCATION PROGRAMS INCLUDING

- Foundations in Design
- Fashion & Technology
- Fashion Marketing
- Interior Design
- Product Design
- Graphic Design for Marketing

And there's more. Advanced research space will be created where visionaries, design innovators and strategic technologists will emerge to lead the design industry.

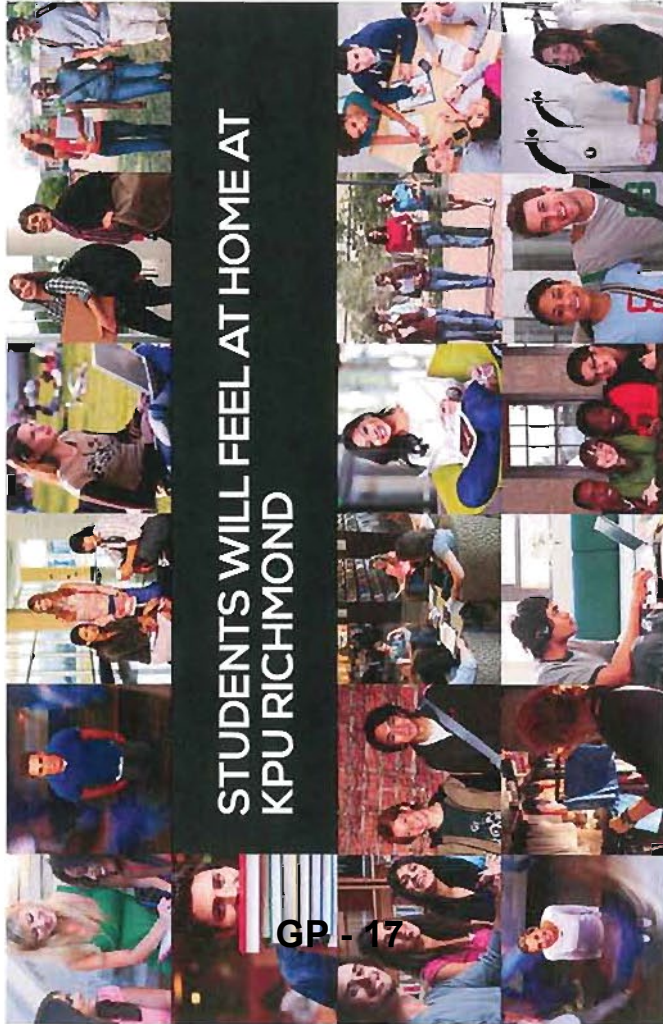
Meanwhile, program growth and enhancement will continue along with construction. A post-baccalaureate diploma in technical apparel design, which will combine design, business and technology to develop a new generation of design thinkers, will welcome its first students in January 2014.

KPU'S GRADUATES ARE IN **HIGH DEMAND** FOR THEIR **CREATIVE AND TECHNICAL EXPERTISE**, GROUNDED BY A MARKET-DRIVEN APPROACH AND STRONG TIES TO INDUSTRY

The Ship and Shannon Wilson School of Design is the only one of its kind in Canada, and there is much more in store at this urban campus. The new building will increase academic space on the campus by 4,900 square metres (53,000 square feet), and act as a catalyst to develop KPU Richmond into a "destination campus."

As the new five-storey design facility takes shape over the next two years, other exciting developments will unfold at KPU Richmond, where \$5 million in refurbishment to the current building will be completed this fall with significant investments already made to renovate the Coast Capital Savings Library and upgrade the Melville Centre for Dialogue.





STUDENTS WILL FEEL AT HOME AT KPU RICHMOND

GP - 17

Another exciting component envisioned for KPU Richmond is a student residence building. The proposed residence for KPU to be located in Richmond will be developed with two purposes in mind: living options for our growing international student population and also an innovative language centre that will allow for intensive language immersion for all interested students, both domestic and international. This unique multi-purpose residence will allow students to immerse themselves in each other's languages and cultures, allowing them to "live" the languages and cultures they are learning.

But it takes for more than bricks and mortar to build a world-class university. KPU is the largest institution of higher learning south of the Fraser, and the largest of the teaching universities in Western Canada, and continued innovation in academic offerings will be a hallmark of the new KPU Richmond.

Here are just some of the **planned program innovations** for this campus:

- The Sustainable Food Systems Working Group and Bio-Regional Food Systems Design and Planning Project, which includes 30 researchers across seven universities.
- A new Bachelor of Science in Physics for Modern Technology will launch in the next 18 months.
- The new Bachelor of Applied Science in Sustainable Agriculture plans to add a full working farm laboratory in Richmond.
- Three new post-baccalaureate programs in Food System Planning, Indigenous Food and Community, and Agriculture and Food Systems for Public Educators.

In development for KPU Richmond:

- An accelerated English Language Proficiency Diploma program.
- A program to focus on Career Choices for New Immigrants.
- Linkages between Design and Fine Arts, adding even further breadth to two cornerstone programs.
- A new Media Studies program that would incorporate facets of the Journalism, Creative Writing, Fine Arts and English programs.
- Expanding the number of Modern Language courses offered.
- An East Asian Studies program.
- A number of Continuing Education courses.
- A degree in International Business.
- A post-baccalaureate program in Operations Management.
- A post-baccalaureate program in Human Resources.
- A degree in Traditional Chinese Medicine.
- A science wing.





GP - 19

KPU RICHMOND IS ALREADY A **THRIVING CAMPUS** WHERE NEARLY 9,000 STUDENTS COMPLETE THEIR STUDIES EACH YEAR, INCLUDING:

- Six undergraduate programs in Design.
- Full degrees in Criminology and Psychology.
- Associate Degree in Science, with specialities in Chemistry, Biology, Physics and Mathematics.
- A post-baccalaureate diploma in Technical Apparel.
- All diploma requirements for the School of Business.
- Diploma in Public Relations.



For 32 years KPU has proudly served the Richmond community with academic programs designed to reflect the expectation of excellence exemplified by its residents. As Richmond continues to grow, we are growing with it, investing more than \$40 million in new learning space for our students.

KPU Richmond is now home to more four-year degree programs than ever. Our academic offerings are designed to respond to the needs of industry and the marketplace. Because of this our graduates are immediately able to contribute to their chosen fields and to the broader community.

We are grateful for this community for partnering with us for so many years, and we look forward to serving Richmond, and educating tomorrow's industry and community leaders, for many more years to come.

Dr. Alan Davis
President & Vice Chancellor
Kwantlen Polytechnic University



As Mayor of the City of Richmond for the past 12 years and as a resident for over 30 years, I have experienced firsthand the rapid growth that has transformed our community. The success of our community depends on its ability to provide our flourishing economy and expanding population with the opportunity of education and job training. The presence of KPU Richmond is a vital component of our future.

The City of Richmond and KPU are committed to the same vision for our community – a dynamic city that celebrates multi-ethnicity and believes in offering its citizens the opportunity to work and learn within their own community.

Mayor Malcolm Brodie
City of Richmond



KPU Richmond, 8771 Lansdowne Road, Richmond BC
604.599.2100 | kpu.ca