



# City of Richmond

## Report to Committee

**To:** Parks, Recreation and Cultural Services  
Committee

**From:** Jane Fernyhough  
Director, Arts, Culture and Heritage Services

**Re:** Tait Waterfront Park Public Art Project

**Date:** December 18, 2017

**File:** 11-7000-09-20-129/Vol  
01

### Staff Recommendation

That the staff report titled, "Tait Waterfront Park Public Art Project," dated December 18, 2017, from the Director, Arts, Culture and Heritage Services, to implement the Tait Waterfront Park Public Art Project, be endorsed.

Jane Fernyhough  
Director, Arts, Culture and Heritage Services  
(604-276-4288)

Att. 3

REPORT CONCURRENCE		
<b>ROUTED TO:</b>	<b>CONCURRENCE</b>	<b>CONCURRENCE OF GENERAL MANAGER</b>
Finance Department Parks & Recreation Services	<input checked="" type="checkbox"/> <input checked="" type="checkbox"/>	
<b>REVIEWED BY STAFF REPORT / AGENDA REVIEW SUBCOMMITTEE</b>	<b>INITIALS:</b>  CS	<b>APPROVED BY CAO</b>  

## Staff Report

### Origin

In 2011, *Water #10* by Jun Ren, located at the Cambie Drainage Pump Station along the Middle Arm Greenway, was purchased by the developer, David Chung (Dava), for the Parc Riviera development at 10071 River Drive. It was proposed that the artwork be relocated to this new development project in 2013, subject to the pace of development at the site.

On October 7, 2015, the developer (Dava) proposed allowing the artwork *Water #10* to remain at its present location adjacent to the Cambie Pump Station. The Public Art Advisory Committee reviewed this proposal and supported this location, which is consistent with the criteria for public locations identified in the City Centre Public Art Plan.

On April 11, 2016, Council endorsed the transfer of ownership of the artwork *Water #10* to the City of Richmond, to remain at its location at the Cambie Road Drainage Pump Station Plaza. As a condition of the approval, the developer agreed to transfer the remaining balance of their total public art contribution to the City for a new artwork to be integrated with the Tait Waterfront Park, at the direction of the City.

This report brings forward the public art project and artist terms of reference for a civic public art work to be located at Tait Waterfront Park.

This report supports Council's 2014-2018 Term Goal #2 A Vibrant, Active and Connected City:

*Continue the development and implementation of an excellent and accessible system of programs, services, and public spaces that reflect Richmond's demographics, rich heritage, diverse needs, and unique opportunities, and that facilitate active, caring, and connected communities.*

2.1. *Strong neighbourhoods.*

2.3. *Outstanding places, programs and services that support active living, wellness and a sense of belonging.*

2.4. *Vibrant arts, culture and heritage opportunities.*

### Analysis

#### Background

The Tait residential neighbourhood covers an area of 68 ha (168 ac.) and is located south of the North Arm of the Fraser to Bridgeport Road, between Shell and No.4 Road. The neighbourhood is characterized by single family homes south of River Drive and multi-family housing closer to the river. It is in close proximity to the Bridgeport Canada Line station (Attachment 1).

#### Tait Waterfront Park Design

On July 27, 2015 Council endorsed the Tait Waterfront Park concept plan. The design for the park is inspired by its location at the edge of the Fraser River. Paving patterns and stampings, distinctive play structures and landscape plantings will combine to emphasize the natural

character of the site. The plan proposes a variety of uses and features in various zones, including an open lawn, basketball/multi-use hard surface courts and a play-scape environment. Pathways will provide multiple access points from River Drive and the dyke. Walking pathways will be accessible and barrier-free, and secondary pathways will connect together the various features of the park. To provide shade during the summer weather, deciduous shade trees of various types will be strategically placed around the park. Other plantings will be used to increase biodiversity and create habitat for wildlife (Attachment 2).

### Public Art Opportunities

The new Tait Waterfront Park will offer an artist or artist team the opportunity to design, fabricate and install an open-air sculptural pavilion to function as a picnic shelter and be suitable for outdoor group activities such as tai-chi, yoga and other types of fitness and community activities. The sculptural pavilion will provide an opportunity for nearby Cambie Community Centre to activate the space with daytime programming from spring to fall. City staff will engage in exploratory discussions with community organizations to determine interest and feasibility for satellite programming opportunities.

The sculptural pavilion will be located close to the park entrance at McLennan Avenue and River Drive, and will act as a gateway landmark and prominent gathering space for this new residential community.

### Artist Selection Process

A two-stage artist selection process will be implemented and follow the guidelines as outlined in the Public Art Program Administrative Procedures Manual. A five-person selection panel composed of professional artists, arts professionals, arts educators and community representatives will review and evaluate artist submissions and concept proposals. Staff, technical consultants and an observer from the Richmond Public Art Advisory Committee will support the panel as part of the adjudication meetings.

The Public Art Advisory Committee has reviewed and endorsed the artist terms of reference for the Tait Waterfront Park Public Art Project. Following the selection of an artist or artist team, the artist concept proposal will be brought forward to Council for endorsement, in order to proceed with the artwork.

Attachment 3 provides further information about the artist terms of reference and artist selection process for the Tait Waterfront public art project.

### **Financial Impact**

The proposed project budget will be funded from the 2015 Public Art Capital Budget. The budget of up to \$130,000, is provided to the artists and consultants for the design, fabrication and installation of the artwork, including all related artist expenses. The ongoing maintenance for this artwork will be the responsibility of the Public Art Program, from existing funds set aside for maintenance.

**Conclusion**

The Tait Waterfront Park public art project will provide an opportunity to support community place making initiatives and contribute to creating a culturally rich environment in a rapidly growing vibrant and sustainable city.

A handwritten signature in black ink, appearing to read 'Eric Fiss', with a stylized flourish at the end.

Eric Fiss  
Public Art Planner  
(604-247-4612)

- Att. 1: Tait Waterfront Park Public Art Project, Location and Site Plan
- 2: Tait Waterfront Park Design
- 3: Tait Waterfront Park Public Art Project Artist Terms of Reference

Tait Waterfront Park Location and Site Plan

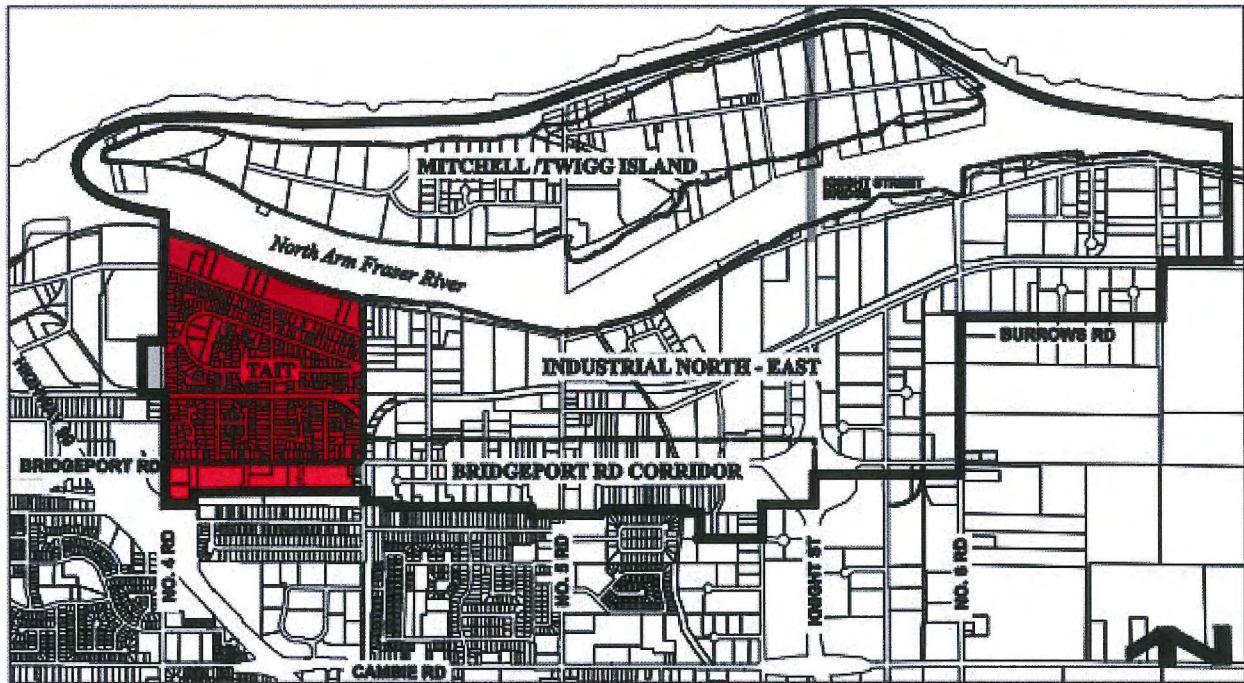


Figure 1. Tait Neighbourhood highlighted within Bridgeport Area Plan

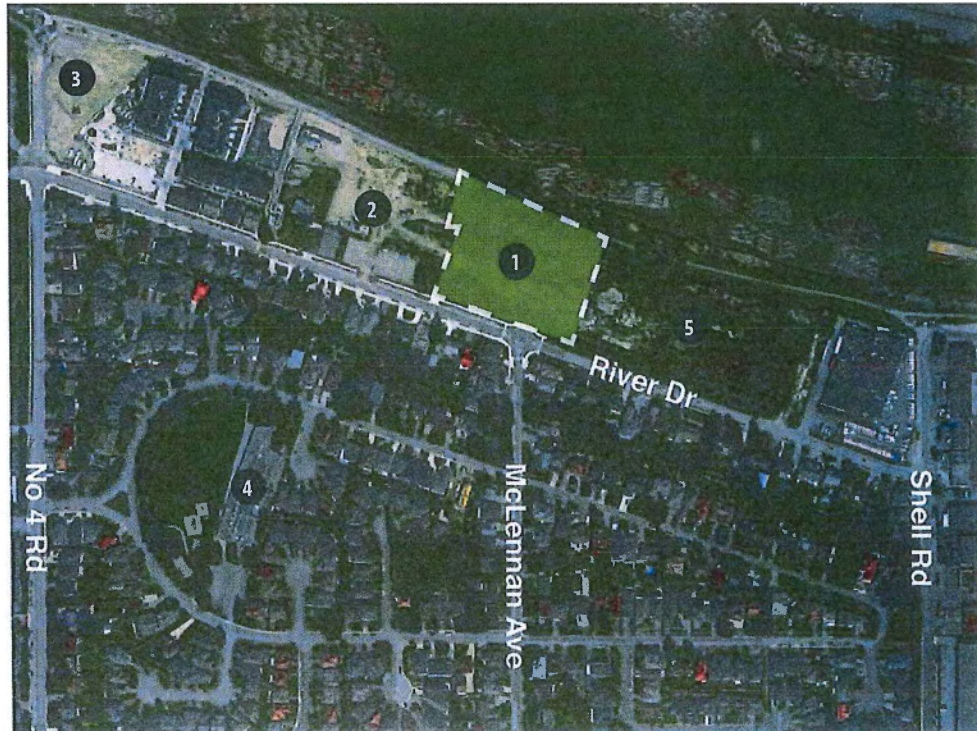


Figure 2. Tait Waterfront Park location plan: 1. Tait Waterfront Park, 2. Future Town Homes, 3. West Park, 4. Tait Elementary School, 5. Future Development

Tait Waterfront Park Design



Figure 3. Tait Waterfront Park Design by PMG Landscape Architects Ltd.

## Tait Waterfront Park Public Art Project Artist Terms of Reference

### 1. Project Background

Tait residential neighbourhood covers an area of 68 ha (168 ac.) and is located south of the North Arm of the Fraser River to Bridgeport Road, between Shell and No.4 Road. The neighbourhood is characterized by single family homes close to Bridgeport Road and multi-family housing closer to the river and is in close proximity to Bridgeport Canada Line station.

Much of the land was originally subdivided in the mid-1940s under the Veterans Land Act to house servicemen and women returning from World War II. The Veterans Land Act (VLA), established in 1942, provided housing and provisions of small holdings for part-time farmers. There were a number of VLA subdivisions in Richmond including Thompson, Cora Brown, Tait, Gray and Grauer. The Tait, Gray and Grauer subdivisions were built in 1945 by the Bennett & White Construction Company. Today, most of these areas have had their density increased by infill housing, although the occasional large lot is still in existence. These early, low-density subdivisions were the precursor to Richmond's urban sprawl of the 1950's. The area is also impacted by aircraft noise due to its proximity to YVR International Airport.

The new Tait Waterfront Park will enhance the liveability of the community and contribute to the provision of amenities including Tait School and park, Cambie Community Centre and a new child care centre as part of the residential development located east of the park.

### 2. Opportunity

An artist or artist team will be contracted to design, fabricate and install an open-air sculptural pavilion that will function as a picnic shelter and be suitable for group activities such as tai-chi, yoga and other types of fitness and community activities. The sculptural pavilion will provide an opportunity for nearby Cambie Community Centre to activate the space with daytime programming during spring to fall. City staff will engage in exploratory discussions with the above organizations to determine interest and feasibility for satellite programming opportunities.

### 3. Location

The open-air pavilion will be located close to the park entrance at the end of McLennan Avenue, at 10211 River Road, to provide opportunities for the public artwork to act as a gateway, landmark and prominent gathering space for the new residential community surrounding Tait Waterfront Park.

### 4. Budget: \$130,000 is provided to the artists for the design, fabrication and installation of the artwork, including all related artist expenses.

### 5. Selection Panel Composition for Selection of Artist

- a) A five-person selection panel composed of professional artists, arts professionals, arts educators and community representatives will review and evaluate artist submissions and concept proposals. An observer from the Richmond Public Art Advisory Committee and City staff advisors including representatives from Parks Services will support the panel.

## 6. Artist Selection Process

A two-stage open call selection process will be used to select and engage an Artist or Artist Team to develop a Concept Proposal and, upon Council approval, fabrication and installation of the artwork.

- a) A Selection Panel will review artist submissions and invite three to five artists to present concept proposals and engage in an interview with the selection panel and staff.

The Stage 1 artist selection criteria for short-listing three to five artists to include the following:

- Artistic merit of the concept proposal
- Qualifications demonstrated by creativity, quality and skill of previous work
- Potential for making engaging artwork, suitable for multiple audiences
- Understanding of the relevance of the site and its histories
- Capacity to work with other design professionals and the community

- b) The Stage 2 artist selection criteria for final selection of an artist to include the following:

- Artist response to any feedback and follow-up questions from Selection Panel regarding artistic merit of Artist Statement of Intent and Conceptual Artist Sketch in response to project theme and goals.
- Artist response to any feedback and follow-up questions from Selection Panel regarding ability of the artwork to respond to the existing character of the site by taking into account scale, colour, material, texture, content and the physical characteristics of the location.
- Artist response to any feedback and follow-up questions from Selection Panel regarding appropriateness of the proposal to the Public Art Program goals: [www.richmond.ca/culture/publicart/plans/policy](http://www.richmond.ca/culture/publicart/plans/policy).
- Detailed project budget including, but not limited to: artist fees, materials, fabrication, administration, insurance, installation, documentation, permits and consultant fees.
- 3D artist visualizations and/or models to communicate how the artwork will respond to the site including scale, colour, material, texture, content, construction and installation method and the physical characteristics of the location.
- Artwork sensitivity to environmental concerns with respect to artwork materials and method of fabrication and installation.

At the end of the Stage 2 Selection Panel meeting, the Panel will recommend one artist or artist team for the commission.

## 7. Timing Schedule

2018-2019 To be determined working with City Development Services and Parks Services.