



To: Parks, Recreation & Cultural Services Committee **Date:** September 2, 2014
From: Jane Fernyhough
 Director, Arts, Culture and Heritage Services **File:** 11-7000-09-20-121
Re: **Capstan Sanitary Pump Station Plaza Public Artwork**

Staff Recommendation

That the concept proposal and installation of the artwork proposed for the Capstan Sanitary Pump Station Plaza, as presented in the report dated September 2, 2014, from the Director, Arts, Culture and Heritage Services, be approved.

For Jane Fernyhough
 Director, Arts, Culture and Heritage Services
 (604-276-4288)

Att.2

REPORT CONCURRENCE		
ROUTED TO:	CONCURRENCE	CONCURRENCE OF GENERAL MANAGER
Parks Development Applications Sewerage & Drainage	<input checked="" type="checkbox"/> <input checked="" type="checkbox"/> <input checked="" type="checkbox"/>	
REVIEWED BY STAFF REPORT / AGENDA REVIEW SUBCOMMITTEE	INITIALS: 	APPROVED BY CAO (<i>for</i>)

Staff Report

Origin

As part of the Pinnacle Living (Capstan Village) Lands Inc. development at 8677 Capstan Way by Pinnacle International (Richmond) Plaza Inc, the developer made a voluntary cash-in-lieu contribution of \$106,745 to the Public Art Reserve. Staff propose that these funds be used to develop the proposed artwork for the Capstan Sanitary Pump Station Plaza. This report presents the proposed public artwork, artist and location for Council's consideration.

This report supports Council's Term Goal No.9 Arts and Culture:

9.1 Build culturally rich public spaces across Richmond through a commitment to strong urban design, investment in public art and place making.

Analysis

Richmond Public Art Program

The Richmond Public Art Program sets a framework for creating opportunities for people to experience art in everyday life, encouraging citizens to take pride in public cultural expression, and complement the character of Richmond's diverse neighbourhoods through the creation of distinctive public spaces.

Development Proposal

The Pinnacle Living (Capstan Village) Lands Inc. development consists of a 14-storey residential tower and mid-rise consisting of 200 dwelling units. It is located at 8677 Capstan Way, to the west of Sexsmith Road, in the Capstan Village sub-area in the City Centre. Council approved the development's rezoning application (RZ 10-544729) on February 12, 2013 and the Development Permit (DP 12-604012) on February 25, 2013. In addition, the developer entered into a Servicing Agreement for the design and construction of a new Capstan sanitary pump station (SA 12-622318).

Proposed Location

As part of the Servicing Agreement (SA 12-622318), the developer agreed to integrate public art with the new Capstan sanitary pump station and landscaped plaza, both of which will be located on City land, fronting Capstan Way, mid-block between Hazelbridge Way and Sexsmith Road.

Terms of Reference

The Public Art Terms of Reference (Attachment 1), prepared by public art consultant Durante Kreuk, describe the art opportunity, site description, theme, budget, schedule, artist selection process, and submission criteria. The Terms of Reference were reviewed and endorsed by the Public Art Advisory Committee. An artist call for submissions was issued on February 26, 2014, with a deadline of March 25, 2014.

Public Art Selection Process

Following the administrative procedures for artist selection of civic public artworks, an arm's length selection panel was engaged in a two stage artist selection process. The five member selection panel included:

- Eliza Au, artist
- George Rammel, artist
- Danny Chen, artist
- Alain Lamontagne, project landscape architect
- Richard Tam, the developer's representative

The selection panel met on March 22, 2014 to select five artists or artist teams from a list of artists who responded to the open call request for qualifications. As a courtesy, Pinnacle International (Richmond) Plaza Inc. was asked to participate in the selection of the artist and artwork. The five shortlisted artists were invited to develop a concept proposal for the project and were paid an honorarium of \$1,000 each to submit their proposals and attend an interview.

On June 19, 2014, the panel met again and reviewed the five artist submissions and interviewed the artists. The concept proposal by Mia Weinberg was recommended for the commission (Attachment 2).

Proposed Artwork

The proposed artwork, entitled *Traceries*, integrates large panels on the sides of the pump station structures using Richlite, a very hard and durable material made from recycled materials and certified by the Forest Stewardship Council of Canada as an eco-friendly material. The material achieves LEED green building credits for recycled content and use of regional materials at the manufacturing plant in Tacoma, WA. It is manufactured without urea formaldehyde, which makes it a low-emitting material of volatile organic compounds.

The artwork will be attached to the support frame to allow the door panels to be opened for access by City staff to the kiosk equipment. The artwork will be routed into the panels and feature maps of the neighbourhood, interpretive drawings of networks found in nature and a community bulletin board on the end panel. Vines on the trellis have been proposed by the landscape architect and will be reviewed with City staff during the design development phase.

Mia Weinberg has been a practicing artist for over 20 years, with a strong interest in the relationship between natural and urban environments. Mia's previous public artworks, in Richmond, include *Hamilton Then and Now*, 2011, within the Hamilton Community Centre, and *Back on Track in Steveston*, 2013, located at the Steveston Tram Building.

Staff Comments on Proposed Artwork

Planning, Parks, and Engineering staff have reviewed the proposed location in terms of urban design, maintenance, pedestrian safety and vehicular service access and have no concerns. The artwork will be designed so that it can easily be removed and returned to its location by City public works crews, if future utility or street work is required.

The Richmond Public Art Advisory Committee reviewed the concept proposal on July 18, 2014 and recommends that Council support this proposal of integrated artwork at the Capstan Sanitary Pump Station Plaza.

Cost of the artwork

Staff propose that the developer's voluntary cash-in-lieu contribution of \$106,745 to the Public Art Reserve is directed towards the selection, fabrication and installation of the Capstan Sanitary Pump Station Plaza public art project. Of this voluntary developer contribution, \$5,337 (5%) has been transferred to the Public Art Provision for City administration of the project. The artist contract is for \$80,000. The remaining funds, \$21,408, will remain in the Public Art Reserve for public art consultant fees, administration of the project and contingencies.

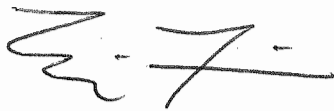
Financial Impact

The proposed artwork's selection, design, fabrication and installation will be funded from the Public Art Reserve.

The artwork will require minimal periodic washing and maintenance, and security monitoring by the City at an approximate cost of \$300 per cleaning every one or two years. City funds would be allocated out of the Public Art Program's annual operating budget.

Conclusion

Funding of the proposed artwork by Mia Weinberg signifies a continuing show of support by developers for the importance of public art to Richmond neighbourhoods and the City. The inclusion of public art within the Capstan Sanitary Pump Station Plaza will enhance the integration of necessary City infrastructure within a publicly accessible open space and support the establishment of Capstan Village as a high-amenity, pedestrian-oriented, urban community.



Eric Fiss
Public Art Planner
(604-247-4612)

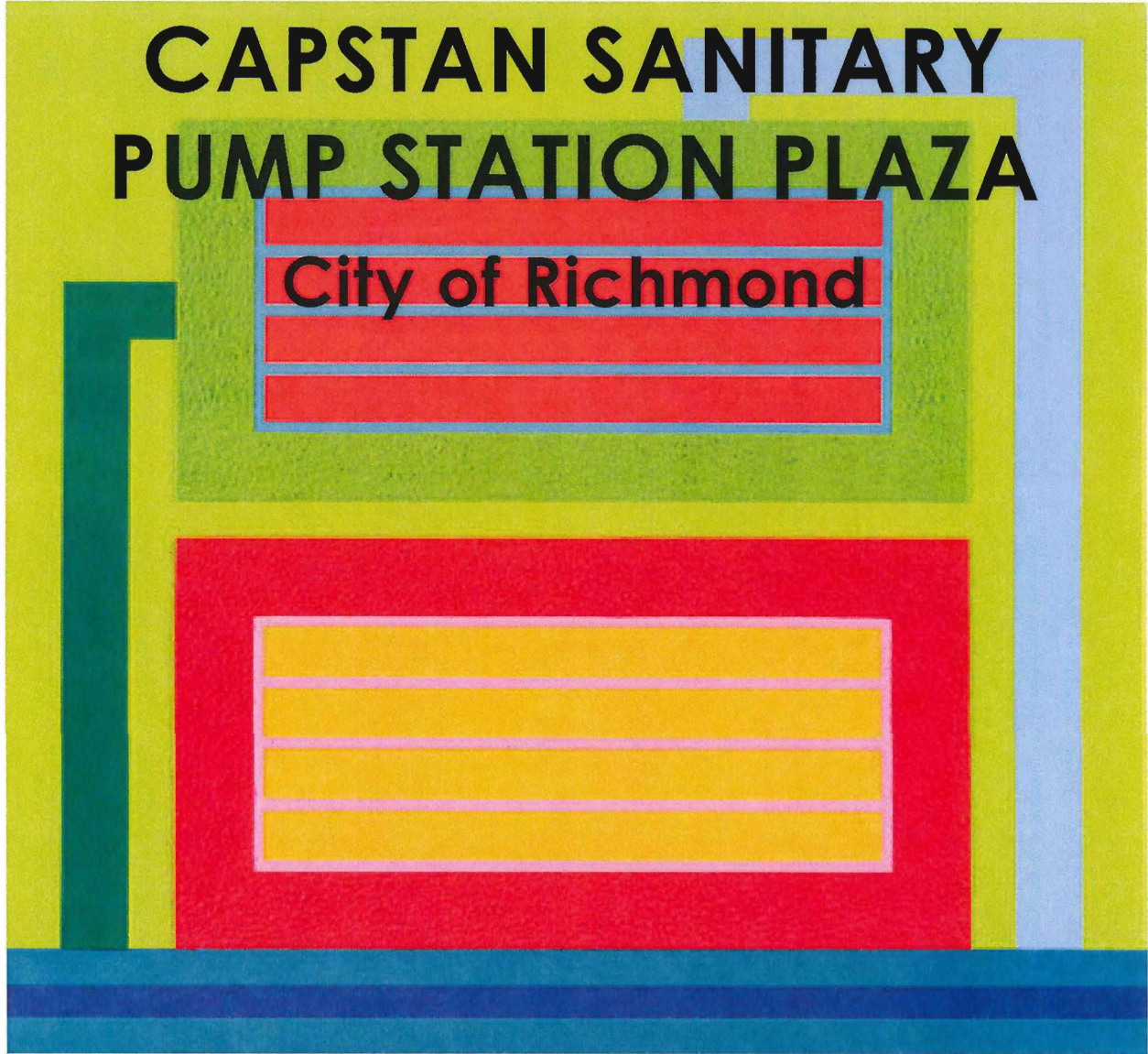
EF:ef

Att. 1: Public Art Artist Call, Terms of Reference
Att. 2: Artwork Concept Proposal, *Traceries* by Mia Weinberg

CALL FOR ARTISTS

CAPSTAN SANITARY PUMP STATION PLAZA

City of Richmond



Disconnect, Peter Halley, 2012.

PROJECT STATISTICS

Project Name.....Capstan Sanitary Pump Station Plaza, 8677 Capstan Way
Project Owner.....City of Richmond
Public Art Consultant.....Durante Kreuk Ltd., Peter Kreuk: 604 684 4611
Project Architects.....Bingham and Hill (adjacent development)
Project Landscape Architects.....Durante Kreuk Ltd.
Project Description.....Integrate public art with a Sanitary Pump Station Plaza
Public Art Budget.....\$80,000.00
Public Art Option.....Open Call RFQ
Public Art Schedule.....Selection: June 2014; Execution: mid 2015.

Feb 06, 2014
 #13061
 Prepared For:
 City of Richmond

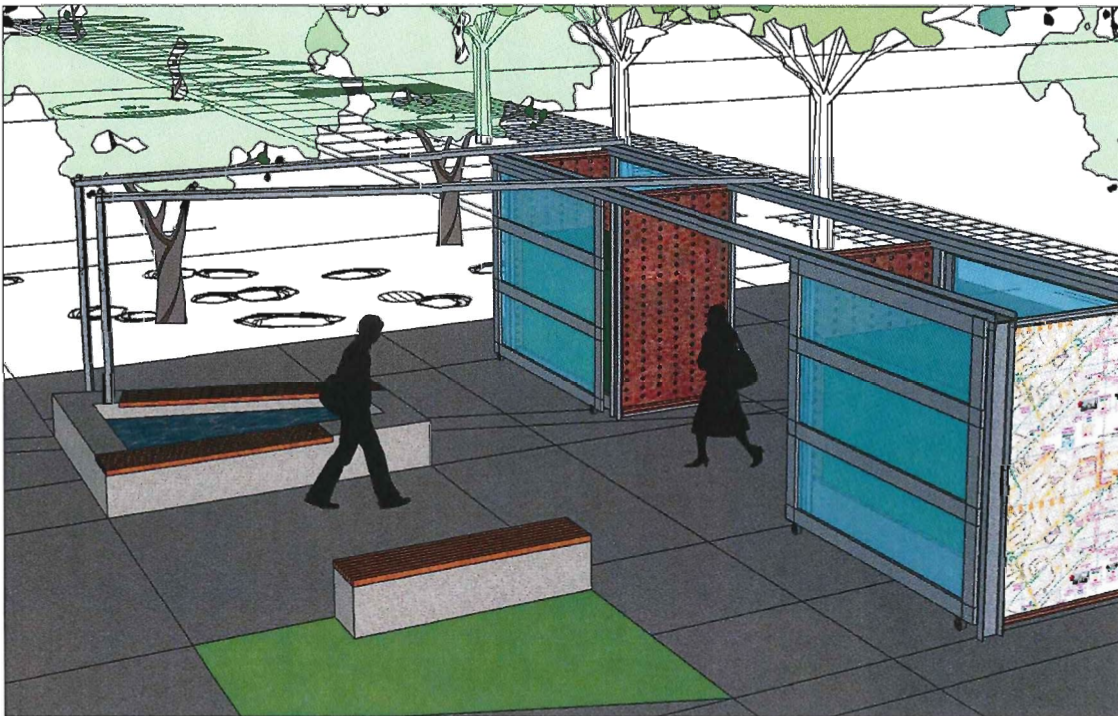


Project Overview

Art+Infrastructure

" Our cities are networks of conduits" Peter Halley, 1985.

This project is an opportunity for an artist to create a work that will enliven a small plaza at the termination of a greenway, which will house a sanitary pump station. The pump station is supported by an Electrical Kiosk and a generator, which will be screened by an enclosure, minimal in character, and designed to permit access on both sides. The art opportunities include the plaza and the enclosure structure.

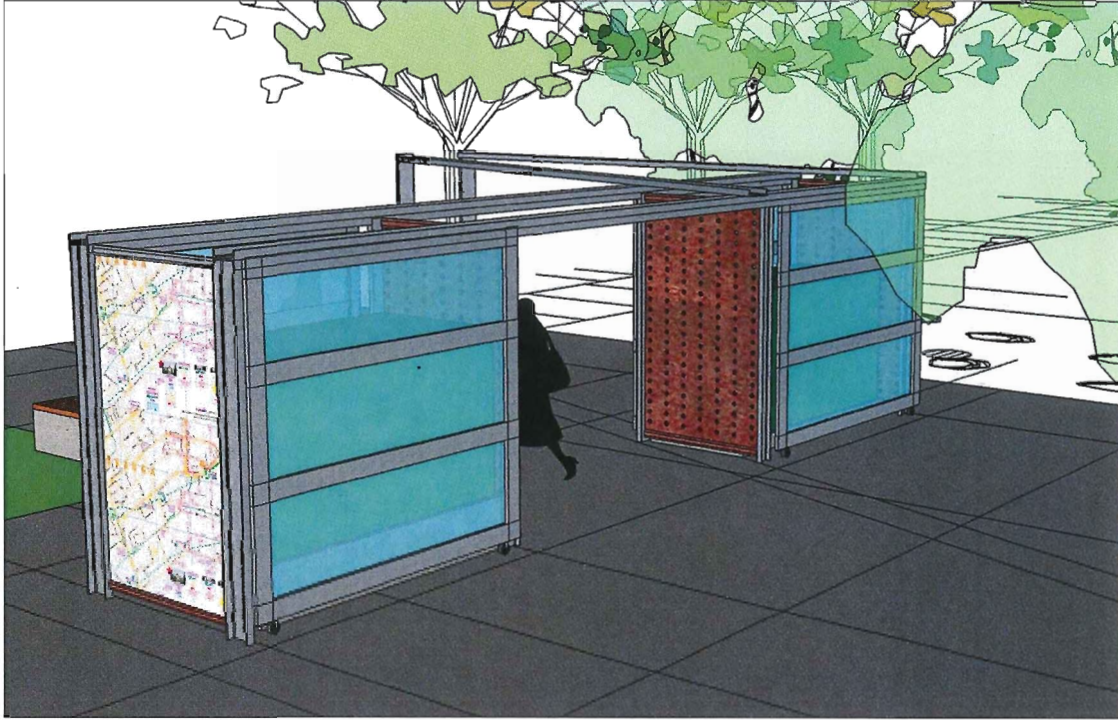


Plaza Perspective Rendering

The pump station in this plaza is one of 138 in a network that moves waste to a treatment plant in Metro Vancouver. This pump station is a node in the circulation of matter, one piece that is a part of a whole, comprising a system of services which make up a nested network of structures for life support.

Artists are asked to respond to the networks and systems that knit our city together. These invisible systems are active conduits of energy and movement, requiring constant input. They are one element of, and a greater metaphor for the way in which we create and manage a complex inter-related system such as a city.

Plaza Perspective Rendering

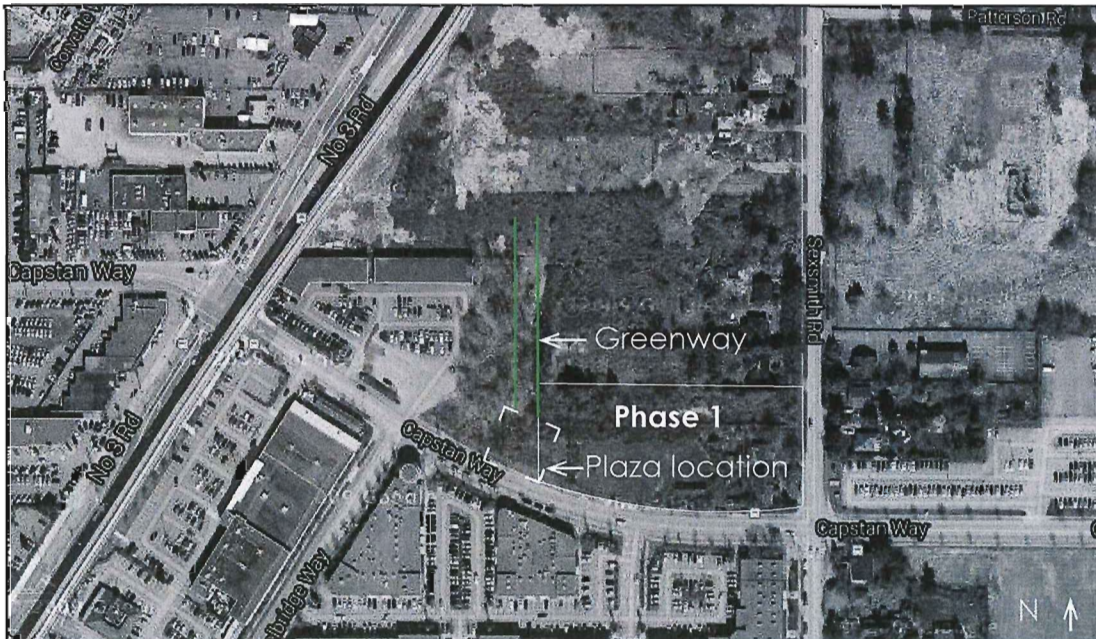


Site Context

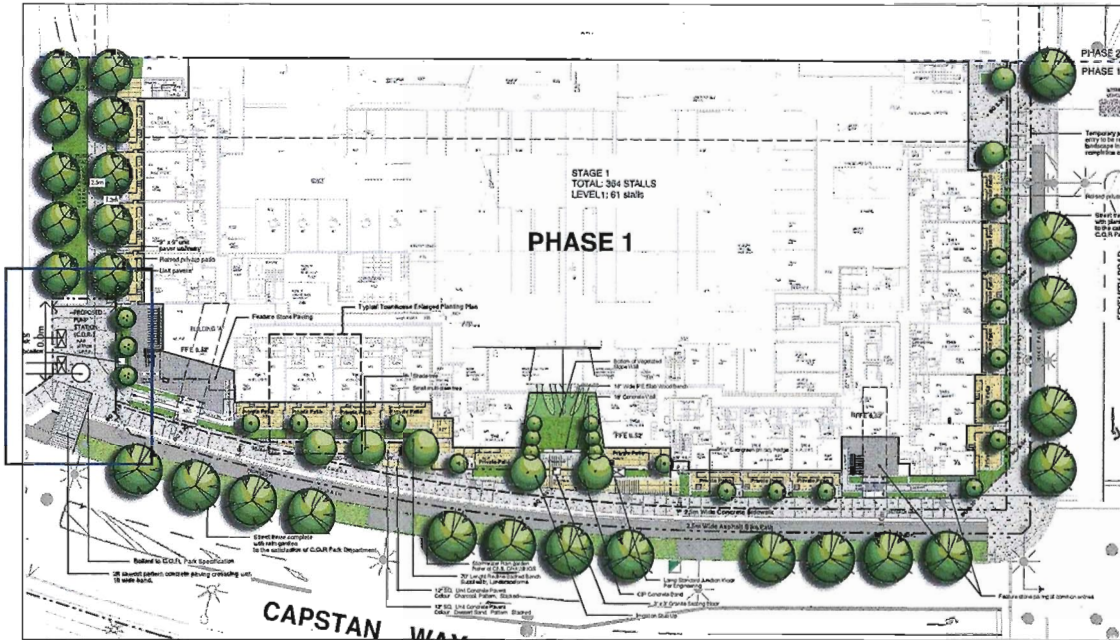
The plaza with the pump station will be contextualized by the development that will surround it once the neighbourhood is built out.

Invited artists must familiarize themselves with the development trajectory of the neighbourhood by reviewing the references listed at the end of this document.

Location Map



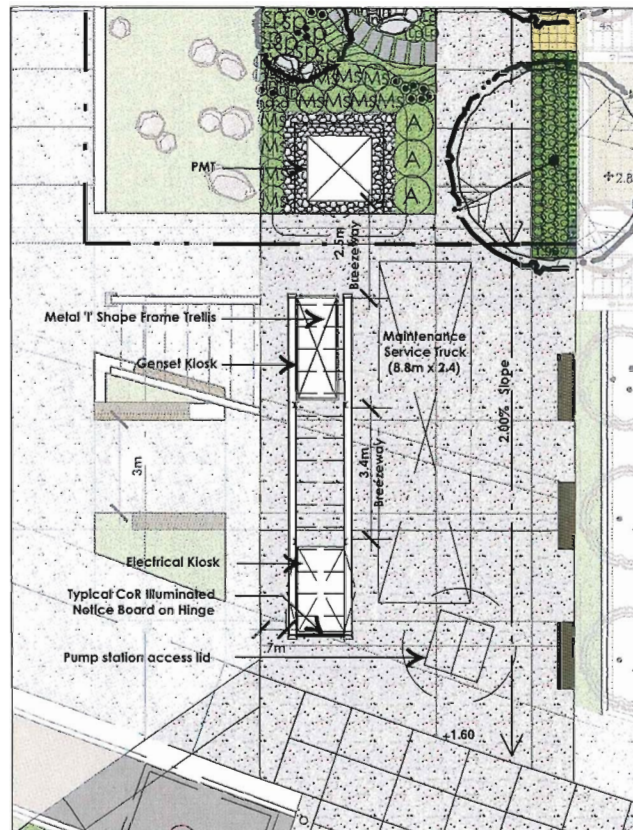
The Pump Station and Adjacent Pinnacle Development



The plaza will be located mid-block along Capstan Way between Hazelbridge Way and Sexsmith road. As a part of a larger planned pedestrian network, it will be the entrance to a proposed greenway between Hazelbridge and Capstan and will provide a route to a proposed neighbourhood park on No. 3 Road.

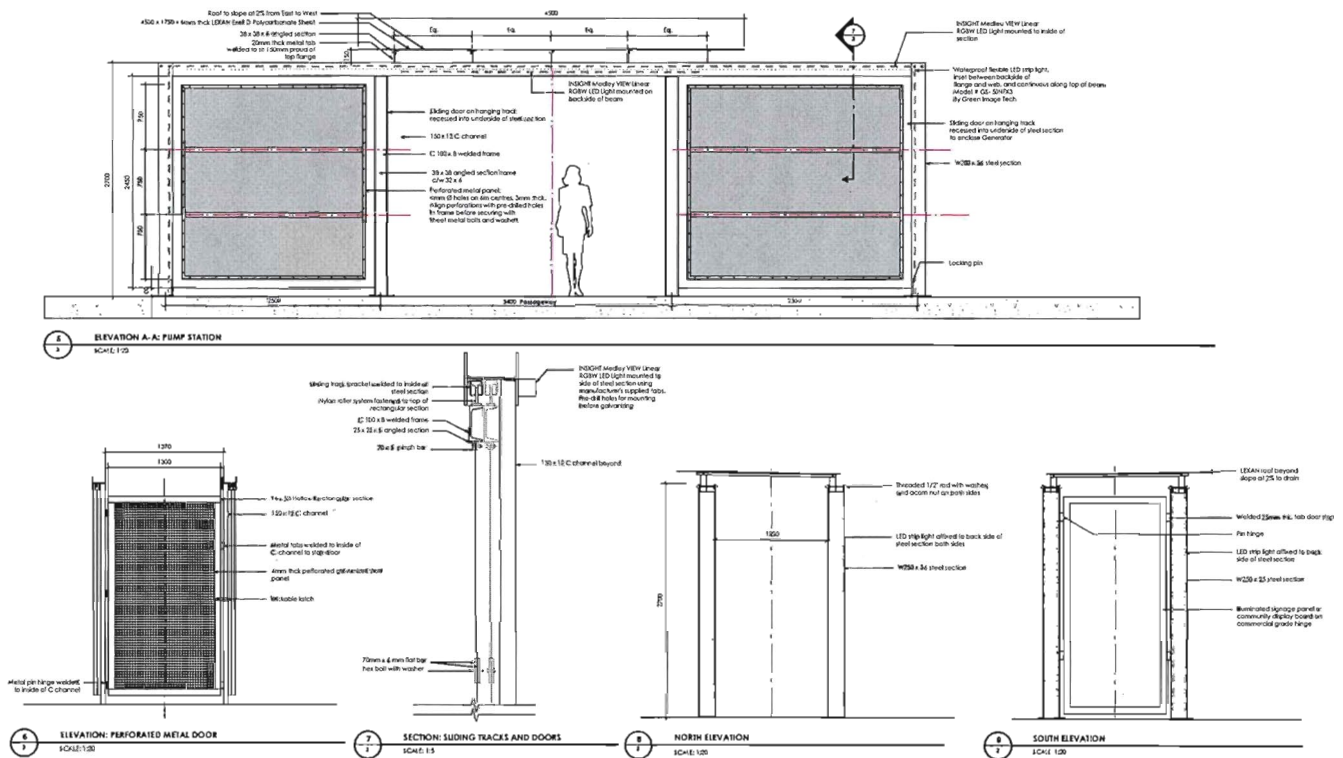
The funding for this artwork has been provided by Pinnacle International Inc. with the ownership of the plaza transferred to the City of Richmond.

The plaza will sit astride two properties, owned by two developers to be built at different times. This first phase will see the construction of the eastern side of the greenway, the pump station and the installation of the art (refer to Plaza Enlargement Plan, subsequent phase greyed out).



The Pump Station Plaza Enlargement Plan

Elevation details: Pump Station Enclosure



Art Opportunities

As an entrance to a greenway, this plaza will function as a gateway. The artwork will contribute visibility to the greenway and the park. Artists should contemplate this purpose, as well as the experience of the site from all available perspectives and speed of travel, including its appearance when viewed from future residences above.

Art opportunities for the enclosure:

- The enclosure itself as an armature for the artwork
- The lighting within and or around the enclosure
- The sliding doors/panels hanging on tracks
- Community display board

Considerations:

Invited artists are encouraged to view the pump station enclosure as an armature for an artwork, so long as it retains the design intent and and functions as detailed. Vehicular accessibility and circulation are constraints that have influenced the configuration of the enclosure, and integrated artworks must also respond to them. Artists must be able to collaborate with the design team to integrate their concept into the structure. The budget for the artwork is additional to the cost of the structure.

Art opportunities in the plaza:

- Artists may propose art work within the ground plane

Considerations:

Due to the need for heavy vehicle access, any works on the ground plane should be integral to the concrete paving and will need to endure heavy loads. For example, a piece made up of mosaics or embedded tiles should not be considered, as it may be damaged. Free standing works should not be considered, as vehicle access and pedestrian circulation limit the available space for this.

Selection Process

The selection of the artist and their art proposal will be the result of a two stage, open call. Artists will first be invited to submit qualifications, from which the selection panel will choose five artists to develop concept proposals.

The Selection Panel

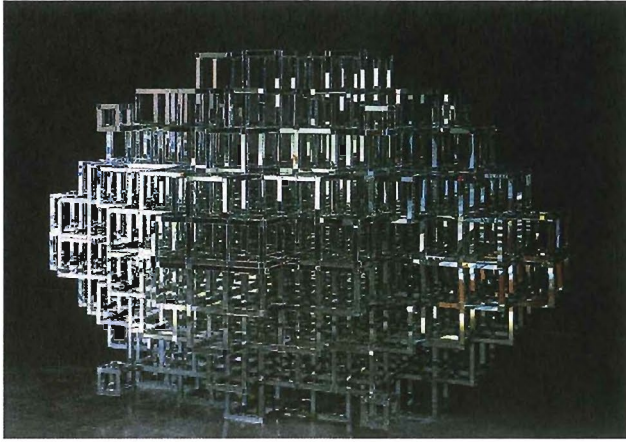
A selection panel of 5 will be assembled to contribute to, and oversee the selection of an artist and their proposal. Two art professionals and one community member will be asked to participate, based on their experience in the public art realm and their familiarity with the Richmond community. They will be tasked with reviewing the submissions from the open call and creating a list of 5 artists to invite to create submissions.

Composition:

- Two art professionals
- Community member
- Developer's representative
- Design professional from project team: Landscape Architect



Current, Andrea Sirois, 2012. City of Richmond Alexandra District Energy Utility Building



The University, David Almejd, 2004.

Selection Criteria

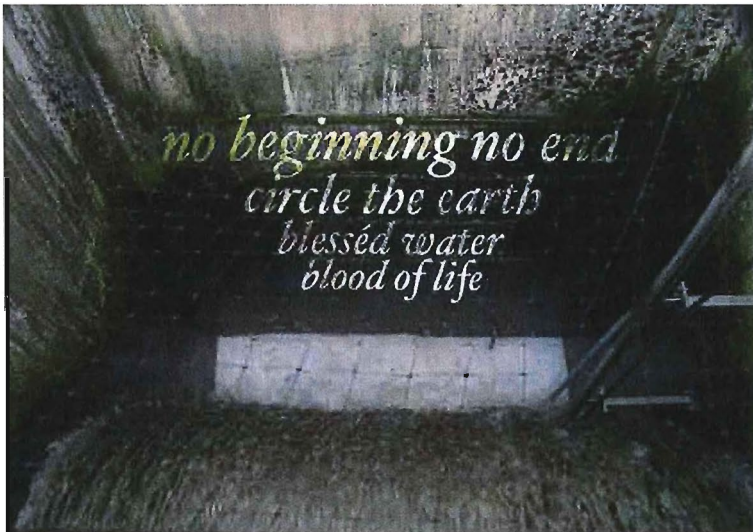
- Artist qualifications and proven capability to produce work of the highest quality;
- Artist's capacity to work in demanding environments with communities and other design professionals;
- Appropriateness of the proposal to the project terms of reference and the Public Art Program goals;
- Artistic merit of the proposal;
- Technical feasibility

Artist Submissions

Credentials package:

The credentials package must be limited to six letter sized pages, and submitted digitally in pdf format. It should be tailored to this project and consist of the following:

- Expression of Interest
- Curriculum Vitae
- Descriptions of 3 works, chosen for their relevance to this project, and complete with images, budget information and a brief description of the process and materials (artists may use concepts which they developed for past processes but were not realized).
- References



Water Blessing Jane Tsong and Judith Roche, 2005-12.

Files under 10MB can be emailed directly, but files over this size must be sent over an online file transfer service such as Hightail or Dropbox.

Submit files by March 25, 2014 to:

Durante Kreuk Ltd.
Emily Nixon
emily@dkl.bc.ca

Budget

All costs are inclusive of all taxes, disbursements, and travel

Available for art: **\$80,000.00**

Invited artists will be given an honorarium of **\$1,000.00** CAD for concept development.

Shortlisted Concept Submissions:

Artists invited to develop concept proposals should include all imagery and documentation necessary to fully convey their concept:

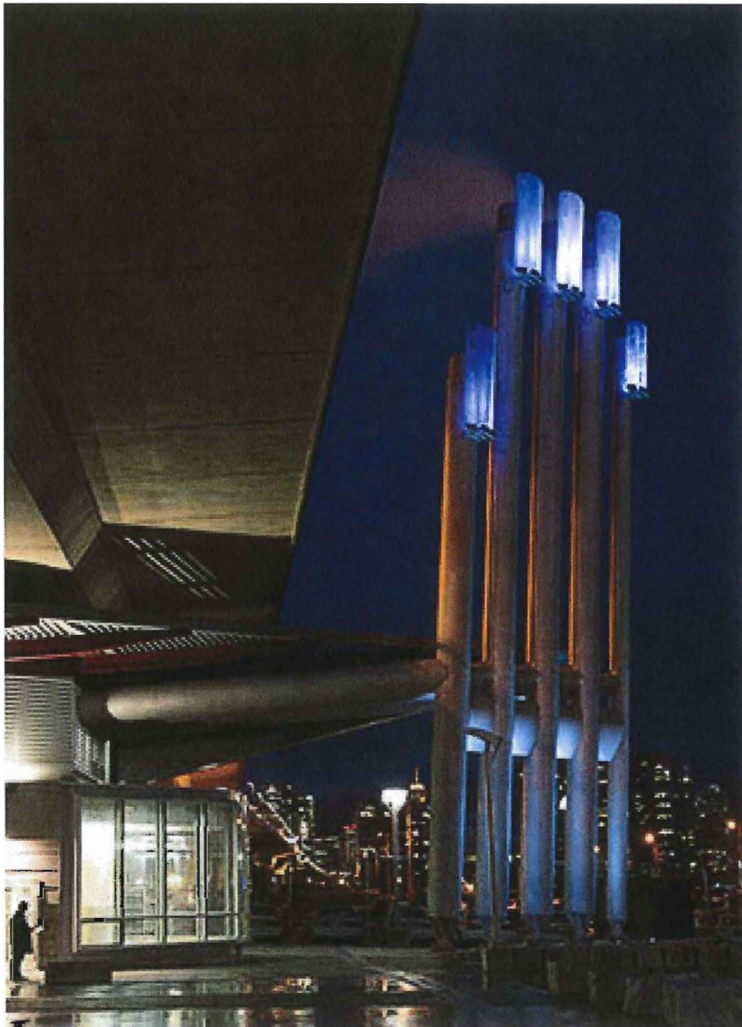
- A scaled maquette or rendering of the proposed artwork
- Concept statement
- Material samples
- Sketches and renderings as needed to convey the relationship of the piece to its surroundings
- Budget, including but not limited to material costs, artist fees, legal fees, consultant fees, site lighting (if required)
- Timeline
- Maintenance considerations

Beckoning Cistern, Buster Simpson, 2003. City of Seattle.



Schedule

Detailed Public Art PlanJanuary 2014
RFQ Submission deadline.....March 25, 2014
Artist Shortlist.....May 1, 2014
Artist Selection.....June 15 2014
Constructionmid to late 2015



*False Creek Energy Centre Stacks,
Pechet and Robb, 2009.
City of Vancouver.*

References

Richmond Official Community Plan - Richmond City Centre Area Plan

Available on the City of Richmond Website:

<http://www.richmond.ca/plandev/planning2/ocp/sched2.htm#citycentre>

Richmond City Centre Public Art Plan

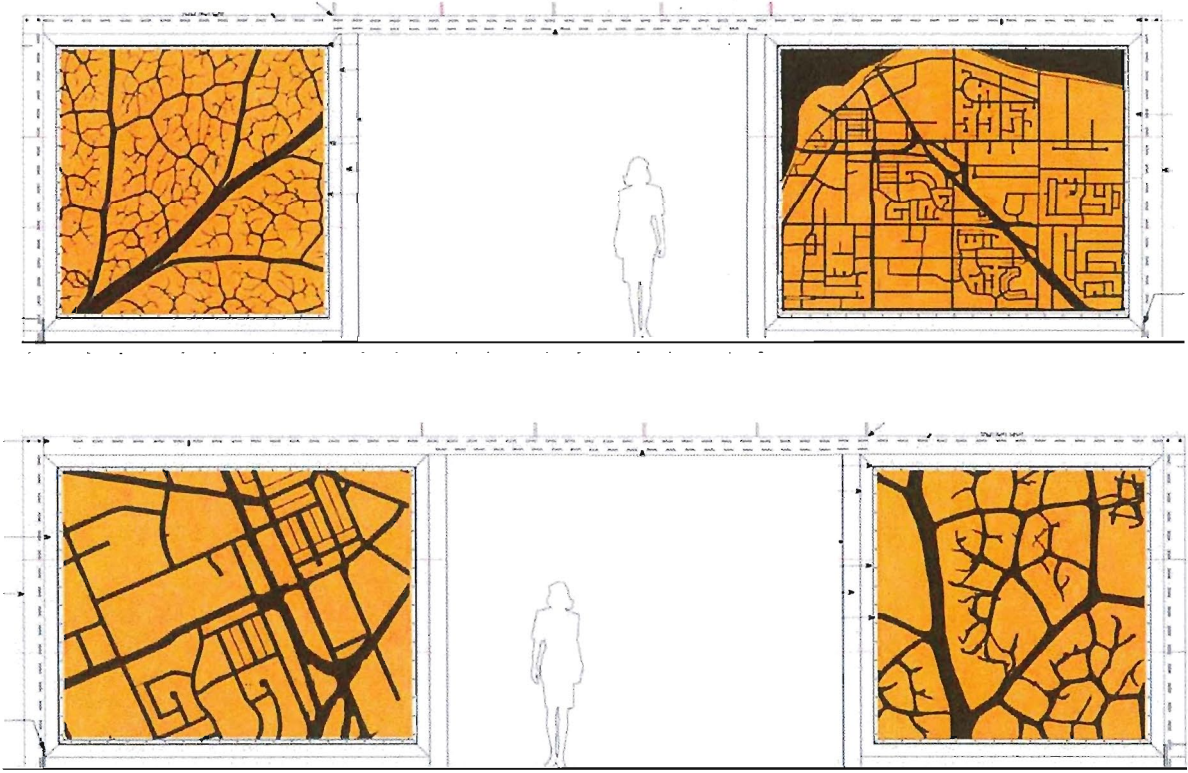
Available on the City of Richmond Website

<http://www.richmond.ca/culture/publicart/plans/plans.htm>

Traceries

Proposal for Capstan Sanitary Pump Station
Mia Weinberg

My work celebrates connections between the natural environment and the places where we live and work. By integrating imagery from local plants and maps of the surrounding area, “Traceries” will be uniquely grounded in the place where it will be installed. Just as the veins of leaves are the lifeblood of a plant, transportation networks are the lifeblood of a city. Whenever pedestrians pass by, these four images will playfully juxtapose the similarities between the natural world surrounding Richmond and the transportation systems within it. The warm colour and carved contours invite touching, offering an extra quality of enjoyment for people of all ages.



Features

- Site specific: integrates maps of the neighborhood
- Tactile: Richlite feels good to touch
- Visually intriguing: juxtaposes natural and municipal networks in an innovative material
- Shadow lines will continually shift with changing light and seasons

Richlite

- Durable: harder than the hardest hardwood, used for bulkheads on yachts & building cladding
- Easy to maintain: no painted surfaces, graffiti can be removed with sanding and Scotchbrite pads
- All fixtures will be inside the enclosure
- Sustainable manufacturing (FSC certified)

Budget

Materials fabrication & installation	37,000
Artist Fee	20,000
Studio Fees (insurance, Worksafe, project management, engineering, legal & admin.)	5,000
Research & prototyping multi-coloured laminated panels	5,000
Artwork identification sign (fabrication & installation)	800
Travel	800
Contingency	7,600
	\$76,200
Tax	3,800
	Total \$80,000

