



City of Richmond

Report to Committee

To: Parks, Recreation and Cultural Services
Committee

Date: June 28, 2013

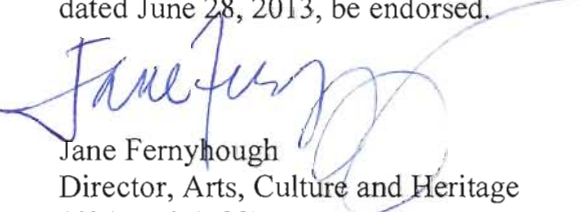
From: Jane Fernyhough
Director, Arts, Culture and Heritage

File: 11-7000-09-20-161/Vol
01

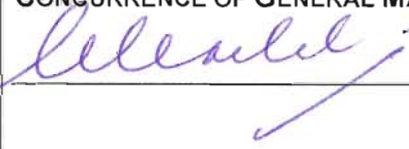

Re: West Richmond Community Centre Public Art Project

Staff Recommendation

That the concept proposal for the West Richmond Community Centre Public Art Project by artist Jeanette Lee as presented in the report from the Director, Arts, Culture and Heritage Services dated June 28, 2013, be endorsed.


Jane Fernyhough
Director, Arts, Culture and Heritage
(604-276-4288)

Att. 3

REPORT CONCURRENCE			
ROUTED TO:	CONCURRENCE	CONCURRENCE OF GENERAL MANAGER	
Budgets	<input checked="" type="checkbox"/>		
Project Development	<input checked="" type="checkbox"/>		
Facilities	<input checked="" type="checkbox"/>		
Recreation	<input checked="" type="checkbox"/>		
REVIEWED BY DIRECTORS	INITIALS: DW	REVIEWED BY CAO	INITIALS: 

Staff Report

Origin

The City's Community Public Art Program creates opportunities for collaborative art projects between community groups and professional artists of all disciplines. Working with a professional artist, the community group is involved in all stages of planning and commissioning of a public art project.

This report brings forward for consideration the concept proposal jointly developed by the West Richmond Community Centre (WRCC) and the artist Jeanette Lee. This initiative is in line with Council Term Goal 9.5:

Promote existing cultural resources and activities to increase public awareness, enhance quality of place and engage citizens across generations.

Analysis

Terms of Reference – Community Public Art Selection Process

On November 20, 2012, the Richmond Public Art Advisory Committee (RPAAC) reviewed a submission from the West Richmond Community Association to fund an intergenerational community public art project at the West Richmond Community Centre. RPAAC approved a recommendation that staff work with the West Richmond Community Association to develop an artist proposal call for the project and recommended that the Public Art Program provide matching funds from the community public art budget.

In accordance with the City Public Art Program procedures for the community program, a selection panel reviewed the portfolios of artists on the Community Public Art Roster, to short-list 3-5 artists for an interview process. The selection panel met on March 26, 2013 and included the following members:

- Mark Glavina, Artist, Richmond
- Emily Vera, Preschool Supervisor, West Richmond Community Centre
- Barbara Liska, Representative, West Richmond Community Association

Artists were evaluated on the basis of artistic merit of past work; appropriateness to the goals of the Program including past work with community groups and with youth in particular; and artist qualifications. The panel recommended that four artists be considered for this project.

On April 15th the panel interviewed the four artists and after careful deliberation recommended artist Jeanette Lee of Vancouver for this project.

Recommended Public Art Project

This project will make use of a hands-on approach to the making of public art, involving community members in all aspects of the project, from visualization through fabrication, installation and documentation. Community members of all age groups of West Richmond Community Centre will participate in the project. Emily Vera, Preschool Supervisor and lead contact will coordinate in class and after school activities.

The project is proposed for the West Richmond Community Centre's main entrance stairwell (**Attachment 1**) and will complement the existing community public art project entitled *Community Kaleidoscope* by artist Mark Glavina, installed in 2005. Artist Jeanette Lee has met with the WRCC lead contact to understand the project, generate ideas and develop the concept.

Public Art Concept

The theme for the art project will be *Movement*, in keeping with the proposed location of the artwork inside the stairwell walls. Artist Jeanette Lee will work with community members to make human profile shapes to be placed along the wall as one travels up or down the stairwell. These human profile shapes will be life-size. Images of shoes are proposed for the landings. Using paint and/or digital printing methods the profile shapes will be illustrated by community members of all ages. The Public Art Program will lead a City interdepartmental team to review the status of the project as it continues to progress and to facilitate technical reviews, including building code compliance, with the artist, Jeanette Lee.

Further information on the concept for the proposed art project (**Attachment 2**), and the artist's biography and examples of the artist's previous community public art projects (**Attachment 3**) is provided in the attachments to this report.

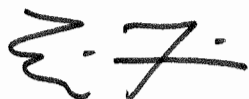
Financial Impact

The total funding of \$10,000 for this project will be shared between the West Richmond Community Association and the Richmond Public Art Program. The Public Art Program has allocated \$5,000 for this community project from existing funds in the approved 2012 Public Art Capital Project, which identifies an overall budget of \$20,000 towards pursuing community public art partnerships as they arise. An additional \$5,000 will be contributed by the West Richmond Community Association. Maintenance for this project will be the responsibility of the Public Art Program. City funds would be allocated out of the Public Art Program's annual operating budget.

Conclusion

Richmond's Community Public Art Program creates opportunities for collaborative public art projects between Richmond community groups and artists of all disciplines. The program is based on the belief that through the arts, communities can explore issues, ideas and concerns, voice community identity, express cultural spirit and create dialogue. The West Richmond Community Centre public art project outlined in this report reflects and embraces these intentions.

West Richmond Community Centre and the Richmond Public Art Advisory Committee have enthusiastically endorsed the public art concept. If endorsed, the project will move into the design and fabrication phase, with installation scheduled to be completed by Spring 2014.



Eric Fiss
Public Art Planner
(604-247-4612)



**City of
Richmond**

Community Public Art Program
Community Services Department
Arts Services

The West Richmond Community Centre at 9180 No. 1 Rd. seeks an artist or artist team to produce a socially engaged artwork. The artist or artist team will be required to work with children aged 3-12 years, teenagers 14-17 years and adults 55+.

Budget: \$10,000 (inclusive of artist fees, materials, production costs)
Start Date: September 2013
Location: West Richmond Community Centre within the main entrance stairwell. Please see Figure 1 and 2.



Figure 1- White wall

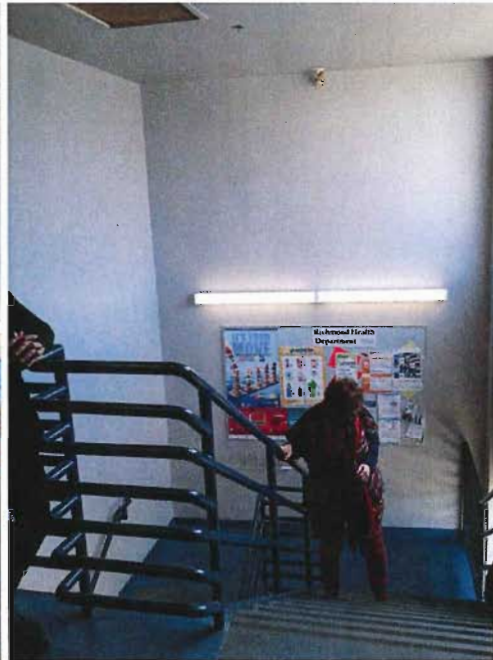


Figure 2 – Stairwell context

Five questions to consider prior to your interview with the artist selection panel on April 15th, 2013:

1. This project involves working with children ages 3-12, teenagers and seniors. Please share your vision of working with these different age groups. How can you make this project developmentally suitable for all age groups so that each group feels comfortable in contributing to the project's development and execution?
2. Please speak to your process of developing an idea/concept specific to Community Public Art? Given a start date in September 2013 and a budget of \$10,000 inclusive of artist fees, materials, and production, what kind of timeline would you envision for your project?
3. You are aware of our chosen location for this particularly community public art place. Please refer to Fig.1&2. Can you identify the greatest challenges of working in such a space? Can you identify the hidden potential of this space?
4. In what ways, if any, would you say your work incorporates a sense of sustainability and an expression of our environment?
5. This project may involve working with material outside your chosen media. Can you comment on your ability and experience in working with a variety of different media, materials and fabrication methods?

Preliminary Concept Proposal

Meeting Tuesday April 30, 2013 with Emily Vera

PRELIMINARY THOUGHTS AND DISCUSSION:

Discussed a variety of ideas and possibilities relating to people in motion:

- a) preschool children and community people who use the stairs everyday
- b) ideas about "climbing" as in climbing the mountains of our lives or metaphor for the ups and downs of life (challenges)
- c) There are "interruptions on the pathway like the bulletin board- these are important stops but temporary.... Perhaps celebrate this stop by putting shoe images on the landing. Ideas of "where are we going to ? or leaving?
- d) Movement in life –travelling up the ladder of success or stairway to health(re:bulletin board)
- e) Liked the idea of using actual images or shapes of the stair users climbing up the stairs.
- f) Liked the idea of using metal silouettes, some flushed to the wall, others slightly away(to give depth) and a few in colour

Who:

- a) preschool children from Merry King
- b) seniors who already come to the centre. Outreach to Applegreen Housing across the road. Outreach to those living in the area possibly
- c) teens from Hugh Boyd high school. Lunch hour possibility

Roles or ways to engage:

- a) preschool kids : working with Emily and teachers can be photographed and drawn moving up and down the stairs. Their actual shapes can be used in background and foreground
- c) Seniors :Possibilities – support in working with preschool children painting shapes
 - models for shapes as well
 - models for shoes on landing

d)teens - possibilities - designers of shoe shapes and creators of the landing shoes . Materials flexible

Other participatory opportunities:

Using text somewhere – words, phrases, poetry

Possible Workshop areas: pool table utility room
: preschool classroom

possible materials:

various metals – ie: lightweight aluminum

- steel/stainless steel

- clay (landing shoes?)

- photo images on metal or on wood/ or some

sort of transfer process (possibly on surface of one figure)

Finishing is determined by metal choice.

Paints used by children – water based , permanent acrylic on primed metal

Steps:

a) more image gathering

b) confirmation of final artwork design

c) lazercutting images

d) setting up workshop dates, call and community outreach(word of mouth, flyers and notices) Booking facility

e) getting materials and numbers for workshop

f) installation

g) wrap up/unveiling

Jeanette Lee

Biography

Jeanette is a Vancouver-born artist whose family settled in B.C. over 100 years ago. Her love of the arts started at an early age through studying music and completing her A.R.C.T (Associateship from the Royal Conservatory of Music), University of Toronto. She completed her B.Arts Education at UBC and sent to further complete a post graduate diploma in 1991 at the Arts Students League in New York, where she majored in Sculpture.

Jeanette has held artist residencies at the New York Sculpture Centre twice and at the Studio School of the Aegean in Greece. While living in New York, Jeanette won several art awards including the Merit awards for drawing and sculpture at the ASL, the Nessa Cohen Memorial Scholarship, the Samuel May Rudin Foundation Award and the Kimon Nicolaides Drawing scholarship.

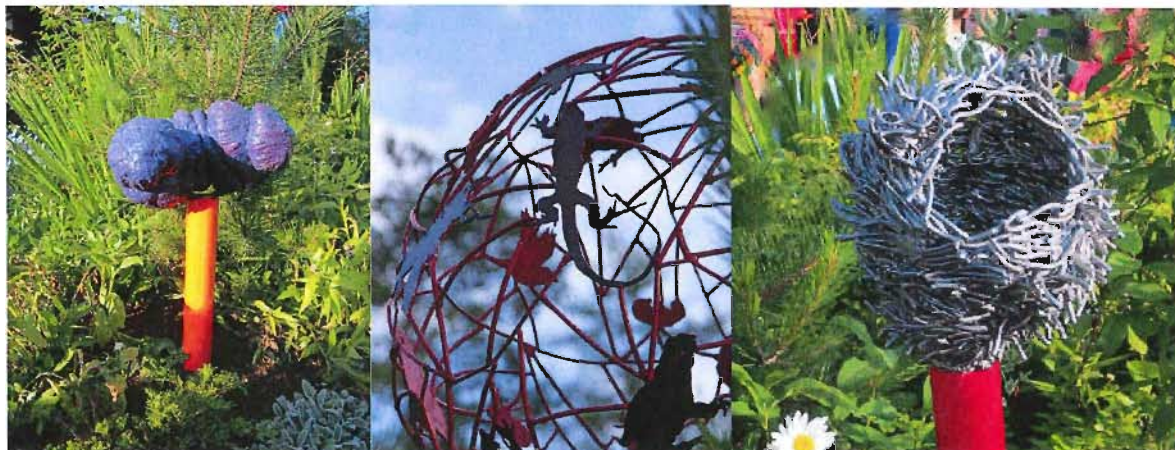
She has had solo exhibitions in New York, Switzerland and Vancouver and her works are part of the permanent collections of the Fukuyama Museum of Art in Japan, the ASL of New York, the Sol LeWitt Collection in Connecticut and the City of Richmond.

For the past few years, Jeanette has been involved in creating private and public art projects.

Selected Works



House of Roots, Paulik Neighbourhood Park, 2005



Green Symphony, Richmond Nature Park, 2011

Artworks Building, Studio #307
237 East 4th Ave.
Vancouver, BC V5T 4R4