



# City of Richmond

## Report to Committee

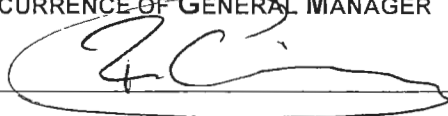

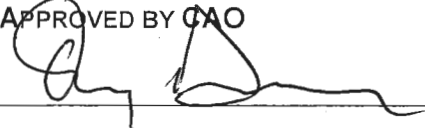
**To:** Public Works and Transportation Committee      **Date:** March 23, 2017  
**From:** Tom Stewart, ASCT.  
Director, Public Works Operations      **File:** 10-6370-01/2017-Vol  
01  
**Re:** **Report 2016: Recycling and Solid Waste Management - On Track for 80% Waste Diversion**

### Staff Recommendation

That the annual report titled, "Report 2016: Recycling and Solid Waste Management – On Track for 80% Waste Diversion" be endorsed and Attachment 1 be made available to the community through the City's website and through various communication tools including social media channels and as part of community outreach initiatives.

Tom Stewart, ASCT.  
Director, Public Works Operations  
(604-233-3301)

Att. 1

REPORT CONCURRENCE	
CONCURRENCE OF GENERAL MANAGER 	
REVIEWED BY STAFF REPORT / AGENDA REVIEW SUBCOMMITTEE	INITIALS: 
APPROVED BY CAO 	

## Staff Report

### Origin

This report presents the City's annual progress toward waste diversion goals as outlined in the attached "Report 2016: Recycling and Solid Waste Management – On Track for 80% Waste Diversion".

This report supports Council's 2014-2018 Term Goal #4 Leadership in Sustainability:

*Continue advancement of the City's sustainability framework and initiatives to improve the short and long term livability of our City, and that maintain Richmond's position as a leader in sustainable programs, practices and innovations.*

#### *4.1. Continued implementation of the sustainability framework.*

This report supports Council's 2014-2018 Term Goal #9 A Well-Informed Citizenry:

*Continue to develop and provide programs and services that ensure the Richmond community is well-informed and engaged on City business and decision making.*

#### *9.1. Understandable, timely, easily accessible public communication.*

### Analysis

#### Background

The City's goals to reduce waste are aligned with regional targets in the Integrated Solid Waste and Resource Management Plan (ISWRMP). Richmond notably achieved its first target of 70% waste diversion in 2013 – two years ahead of schedule – and is now well positioned to pursue the next target of 80% waste diversion by 2020. With the full suite of programs now available in the community, and the continued commitment by community members to recycle, Richmond is on track to achieve this next target and its goal to be a Recycling Smart City.

To achieve its goals, the City assesses and updates existing programs, introduces new policies, bylaws and programs, and works with residents and community partners to improve and expand its waste reduction and recycling services. These programs and services are further supported by a range of communication and outreach programs to ensure residents are aware of the services available and understand how to access and use these services effectively. "Report 2016: Recycling and Solid Waste Management – On Track for 80% Waste Diversion" (the Report) (Attachment 1), summarizes Richmond's comprehensive programs, highlights results achieved in 2016, provides insights into upcoming initiatives, and includes tips and resources to support recycling and sustainable waste management.

#### 2016 Highlights

The Report provides an overview of Richmond's progress towards its waste diversion targets based on the combination of convenient, responsive services that are adapted to meet emerging

needs and priorities, clear requirements through bylaws and other guidelines, and community outreach and communication initiatives.

Key accomplishments in 2016 include:

- Achieved 78% waste diversion from single-family homes.
- Introduced biweekly Garbage Cart service for more than 33,000 single-family homes and townhomes to promote increased recycling and waste diversion.
- Introduced the Richmond Collection Schedule App to provide residents with reminders about their curbside collection day and information about drop-off locations for various materials using the Recycling Wizard. Since its launch in 2016, there were 14,413 online searches for collection day details and 41,326 searches for materials using the Recycling Wizard, and 5,156 residents signed up for weekly reminders.
- Introduced Donation Bin Regulation Bylaw 9502 that restricts donation bin placement to registered charities only and establishes suitable, safe locations for bin placement as part of promoting reuse of used household clothing and other items.
- Supported 153 student volunteers as they contributed 2,661 hours to promote recycling and responsible waste management at community events.
- Introduced the Demolition Waste and Recyclable Materials Bylaw No. 9516, which requires that 70% of waste from single-family home demolitions be recycled or diverted from waste disposal.
- Introduced a new Recycling Champions program to work with residents who are interested in helping their neighbours increase their recycling by providing recycling tips and advice, and by raising awareness about the importance of recycling.
- Supported recycling for approximately 170,000 attendees at more than 50 events.
- Responded to over 26,670 customer service requests and administrative transactions related to garbage and recycling via the Environmental Programs Information Line.
- Delivered 38 recycling and waste reduction workshops with approximately 860 attendees, organized 10 DreamRider and Zero Heroes theatrical shows involving more than 3,710 students, hosted five Recycling Depot tours for 105 students and teachers, and participated at six community events to raise awareness about how to properly sort recyclables to reduce contamination.

These and other key accomplishments in 2016 are outlined in further detail in the Report.

### Report 2016 Overview

The 2016 Report contains four chapters. The first three chapters summarize outcomes and accomplishments in the past year, provide data to report on progress related to current waste management and recycling services, and highlight the variety of public education/community outreach programs delivered across the city. The final chapter in the Report is a comprehensive

tips and resources section. The Report content also features tips for residents to help them connect with City and product stewardship programs for disposing of a variety of items.

A summary overview of each chapter follows.

*Chapter 1: Annual Outlook – On Track for 80% Waste Diversion* highlights the City's progress and key achievements that support achieving its target for 80% waste diversion by 2020. A key initiative in 2016 involved the implementation of the new biweekly Garbage Cart program, which included providing residents with the option to reduce their curbside garbage collection fees by selecting smaller cart sizes. The program rollout involved extensive communication to inform residents about the shift to biweekly collection, how the program works and the opportunities to select their preferred cart size. As part of the implementation, the City introduced a new, free Richmond Collection Schedule App, which provides residents with reminders about their curbside collection day as well as a Recycling Wizard that makes it easy to look up where to recycle household items.

The City continues to promote outreach and community partnerships through its new Recycling Champions Program, which provides resources and support to residents who are leaders in recycling and interested in assisting their neighbours to increase recycling.

Policy improvements highlighted in this chapter include the new Demolition Waste and Recyclable Materials Bylaw No. 9516, which requires mandatory recycling of demolition materials from single-family homes, and a new Donation Bin Regulation Bylaw No. 9402, which restricts donation bins to registered charities and establishes suitable, safe locations for bin placement to address concerns about illegal dumping and a lack of clear requirements for managing these types of bins.

To address public spaces waste management, the City is testing in-ground garbage bins as a means to provide more capacity for outdoor garbage collection while reducing collection frequency needs. As well, the City's Event Recycling Program provides event organizers with recycling and garbage carts at no charge, complimentary collection services and guidance on what is required for effective waste management at events.

*Chapter 2: Programs and Services – Expanding Services to Make Recycling Easy and Convenient* describes the City's comprehensive recycling and waste reduction initiatives and highlights how each program contributes to overall diversion targets and sustainability goals. This chapter provides details on the quantities collected through the Blue Box, Blue Cart, and Green Cart recycling programs, drop-off services at the Richmond Recycling Depot, Yard Trimmings Drop Off service and litter collection services. This section also includes details on the City's Large Item Pick Up Program, and the major categories of items collected through this program. It is noted that residents in single-family homes have reduced their garbage by 17%, which is equal to more than 2,000 tonnes, following the introduction of the biweekly Garbage Cart program. Waste diversion increased from 74% to 78% in 2016. In addition, this section outlines new guidelines being developed to assist developers in designing effective recycling space in new commercial and multi-family buildings.

*Chapter 3: Outreach and Customer Service – Supporting Awareness and Education* presents the City's commitment to support waste reduction and reuse by working together with community members and partners. This includes informing and educating residents and supporting recycling leaders in the community through its high school Green Ambassadors and the newly introduced Recycling Champions programs. The City's extensive public education and community outreach initiatives target emerging information needs, such as how to use new programs or tips on how to recycle correctly to reduce contamination, as well as increasing awareness and fostering sustainable behaviours to make recycling and responsible waste management a way of life. Free workshops on composting, reducing food waste, eco-cleaning, and how to sort recycling correctly are offered throughout the year, as are outreach displays at various events and in local shopping centres. City staff partnered with the Richmond School District to engage 3,534 elementary school students and 177 teachers to teach them how to recycle and inspire them to reduce waste. City staff members also mentored approximately 150 high school Green Ambassadors, who contributed more than 2,660 volunteer hours to support community events and the annual REaDY Summit.

*Chapter 4: Tips and Resources – Easy Steps to Increase Recycling and Reduce Waste* provides a comprehensive guide to recycling. It includes specific information on how and what to recycle in the City's Blue Box, Blue Cart, Large Item Pick Up and Green Cart programs. There is information on how to compost at home, the items accepted for recycling at the Richmond Recycling Depot, and what to do with many household items ranging from medication to recyclable mattresses. In addition to these tips and resources, the City applies communication tactics such as advertising and social media, to raise awareness about key household materials that can contaminate recycling, such as electronics, Styrofoam and plastic bags, and provides information on how to recycle these materials using drop-off programs.

The resources section includes information on what to do with special waste items and banned materials, including recycling and disposal options through take-back programs. There is contact information and locations for Richmond services and community partners involved in stewardship programs.

### *Moving Forward*

As the City continues to grow and expand our services to further advance toward 80% waste diversion for all residents, key focus areas in 2017 will include:

1. Improve litter collection efficiency by installing in-ground containers in high traffic and/or remote public spaces to address garbage capacity concerns and reduce service frequency, and implement new litter collection routes to maximize operational efficiency.
2. Report on potential changes to the configuration of the Recycling Depot, including hours and days of operation, and items accepted, with a goal to enhance the Richmond Recycling Depot.
3. Improve emergency preparedness through the development of a Disaster Debris Management Plan for Richmond that aligns with the Metro Vancouver regional plan.
4. Review and report progress on Demolition Waste and Recyclable Materials Bylaw No. 9516 as part of promoting expanded recycling of demolition materials.

5. Continue to raise awareness about how to recycle and the importance of responsible waste management through workshops, theatrical shows, digitally-led classroom activities, and support the 6th Annual REaDY Summit.
6. Work with Recycling Champions and property managers to increase recycling in multi-family complexes, with a focus on increasing recycling and reducing contamination.
7. Generate awareness about the types of materials that are recyclable in Richmond's programs and how to sort recyclables properly to reduce contamination.
8. Expand public spaces recycling options by leveraging new bin options to provide convenient, accessible recycling, and enhance the container replacement and maintenance program.

#### Proposed Communication

Subject to Council's approval, the annual "Report 2016: Recycling and Solid Waste Management – On Track for 80% Waste Diversion" will be posted on the City's website and made available through various communication tools including social media channels and as part of community outreach initiatives.

#### **Financial Impact**

Programs related to solid waste that impact service levels are brought to Council for review and consideration throughout the year.

#### **Conclusion**

Through the annual "Report 2016: Recycling and Solid Waste Management – On Track for 80% Waste Diversion", the City is providing its residents with a progress report on the many recycling and waste management programs and activities delivered in the community. The Report also serves as a comprehensive resource guide that supports recycling, reuse and reduction activities throughout the year. By tracking progress towards its goals for waste diversion and reporting this to the community, the City is demonstrating Richmond's commitment to responsive services, responsible government and accessible information and communication.

It is through residents' participation and commitment to recycling that those living in single-family homes have achieved 78% waste diversion in 2016, which is on track for the goal to divert 80% of waste by 2020.



Suzanne Bycraft  
Manager, Fleet and Environmental Programs  
(604-233-3338)

Att. 1: Report 2016: Recycling and Solid Waste Management – On Track for 80% Waste Diversion



City of Richmond

# REPORT 2016

RECYCLING AND SOLID WASTE MANAGEMENT



**ON TRACK FOR 80% WASTE DIVERSION**

**Let's trim our waste!**

**PWT - 48**



**LET'S  
TRIM  
OUR  
WASTE!**



# CONTENTS

<b>1</b>	ANNUAL OUTLOOK .....	3
<b>2</b>	PROGRAMS AND SERVICES .....	9
<b>3</b>	OUTREACH AND CUSTOMER SERVICE .....	25
<b>4</b>	TIPS AND RESOURCES .....	31





# ANNUAL OUTLOOK

## ON TRACK FOR 80% WASTE DIVERSION

With the implementation of a full suite of services that make it easier than ever to recycle and reduce garbage, the City of Richmond is on track to achieve its goal for 80% waste diversion by 2020. In addition to its residential recycling and garbage collection services, the City has also introduced new programs and requirements that facilitate convenient waste management and encourage responsible recycling.

A key initiative in 2016 involved the implementation of the City's new residential Garbage Cart program, which involved a shift to biweekly collection. Under the new biweekly Garbage Cart program, the City provided residents with garbage carts with lids and wheels at no cost. Residents' annual utility fee for curbside garbage collection is now based on the size of cart they choose. Residents who opted for smaller carts – generating less garbage – now pay less for their garbage collection. The program rollout included information kits to inform residents about how the biweekly collection program works, the opportunity to save money by reducing their garbage with smaller carts and details on the limited types of household materials that go in the garbage. Under the new program, single-family garbage has been reduced by 17% and organics recycling has increased by nearly 16%. This program complements the City's recycling programs – the Blue Cart/Blue Box program and the Green Cart program – as well as the drop off services available at the Richmond Recycling Depot and the Large Item Pick Up program. Together, these services make it easy for residents to recycle the majority of their household waste, and their progress is evident as Richmond residents with curbside collection are now diverting 78% of their waste from the landfill.

Recognizing the importance of working together to achieve its goals, the City has also introduced a new Recycling Champions program. Through this program, residents who are committed to recycling and encouraging responsible waste management now work with the City to help raise awareness about the importance of recycling, and provide tips on how to recycle correctly. As part of this grassroots outreach program, the City provides the Recycling Champions with training, tips and resources. Any Richmond resident who is interested in promoting recycling and helping other residents to increase their recycling can sign up for the program. This new program is particularly effective in multi-family complexes where residents share a centralized recycling area and may not be as well informed about how to use the recycling programs or why they need to keep recyclable materials out of the garbage.

While residential services are key to achieving waste diversion targets, the City has also made progress towards increased recycling of materials from the demolition of single-family homes. Demolition, land-clearing and construction (DLC) waste accounts for 30% of total waste disposed in the region, and about 70,000 tonnes of that waste originates in Richmond. To support responsible recycling and waste management in this area, the City has introduced a new Demolition Waste and Recyclable Materials Bylaw No. 9516, which requires mandatory recycling of these demolition materials. Under this bylaw, the owner or agent involved in the demolition must submit an application for a demolition permit, along with a properly completed waste disposal and recycling services plan that outlines how the waste and recyclable materials will be handled. The bylaw requires that 70% of the demolition waste be recycled or reused. To help ensure compliance with this bylaw, the owner or agent must keep records to support how the waste and recycling was managed and submit a compliance report within 90 days of completing the project. The owner or agent can apply for a fee refund that is calculated based on how well the bylaw requirements are met, which provides added incentive to recycle the demolition materials.

Richmond has also been conducting pilot projects to test different service options in the community. One pilot project involved the development of a bylaw to address concerns related to illegal dumping that occurs around community donation bins. The problem had become worse as an increasing number of donation bins were being placed around the community.

## Working with Recycling Champions to reduce waste.

As part of assessing the bylaw, it was noted that donation bins help keep materials out of the landfill, encourage reuse and recycling, and facilitate donations of clothing to charitable organizations. Proceeds from these donations are used to fund programs and services that benefit residents. Under the new bylaw, donation bins are only permitted on City property, there is a fee and permit structure in place for anyone who is managing a bin, and the bins can only be placed by organizations that are registered charities. These added requirements will make it easier for the City to ensure the organizations managing these bins remain responsible for regularly emptying the bins and keeping the area free of illegal dumping. The new bylaw came into effect July 1, 2016 and has been very effective.

Another new initiative is a pilot project to test in-ground garbage bins as a means to provide more capacity for outdoor garbage collection while reducing collection frequency needs. The City installed three in-ground containers in 2016 and will be testing them in 2017. The containers only need to be serviced every few months due to their capacity. By reducing the frequency for collection in these pilot areas, the City is better able to manage increasing demands for litter collection in a growing community.

Another key service that supports recycling and waste management in public areas is the City's Event Recycling Program. In 2016, the City supported recycling at more than 50 events, including free rental of garbage and recycling bins and providing event organizers with guidance on how to ensure their event is set up to support convenient recycling services.

Looking ahead to 2017, the City will continue to explore opportunities to increase recycling throughout the community. This will include expanded public engagement opportunities and a review of services to streamline and round out its service delivery approaches.

### THREE EASY STEPS

Richmond can achieve its targets with the help of community commitment to these three easy steps to reduce waste:

#### RECYCLE

RAMP UP RECYCLING – EXPAND YOUR RECYCLING TO INCLUDE FOOD SCRAPS AND OTHER MATERIALS ACCEPTED THROUGH CITY COLLECTION SERVICES, THE RECYCLING DEPOT AND TAKE BACK PROGRAMS.



#### REDUCE

BE CHOOSY WHEN YOU SHOP – SELECT PRODUCTS WITH MINIMAL OR NO PACKAGING, LIKE USING A MUG INSTEAD OF A PAPER CUP.



#### REUSE

DONATE BEFORE YOU DISPOSE – CONSIDER DONATING OR SELLING GENTLY USED PRODUCTS.





## OUR TOP ACCOMPLISHMENTS IN 2016

The following are some of the key accomplishments in 2016:

### BIWEEKLY GARBAGE

**Introduced** biweekly garbage collection service for more than 33,000 single-family homes and townhomes as part of promoting increased recycling and waste diversion. Residents are able to reduce the fees they pay for garbage service by selecting smaller cart sizes.

### COLLECTION SCHEDULE APP

**Introduced** the Richmond Collection Schedule App to provide residents with reminders about their curbside collection day and information about drop-off locations for various materials using the Recycling Wizard. Since its launch in 2016, there were 14,413 online searches for collection day details and approximately 41,326 searches for materials using the Recycling Wizard, and 5,156 residents signed up for weekly reminders.

### DONATION BIN

**Introduced** Donation Bin Regulation Bylaw No. 9502 that restricts donation bin placement to registered charities only and establishes suitable, safe locations for bin placement as part of promoting reuse of used household clothing and other items.

### GREEN AMBASSADORS

**Supported** 153 student volunteers as they contributed 2,661 hours to promote recycling and responsible waste management at community events.

### DEMOLITION & CONSTRUCTION WASTE

**Introduced** the Demolition Waste and Recyclable Materials Bylaw No. 9516, which requires that 70% of waste from single-family home demolitions be recycled or diverted from waste disposal.

### MULTI-FAMILY OUTREACH

**Introduced** a new Recycling Champions program to work with residents who are interested in helping their neighbours increase their recycling by providing recycling tips and advice, and by raising awareness about the importance of recycling.

### EFFICIENCY & PROCESS IMPROVEMENTS

**Completed** an internal process review in relation to customer service, litter collection routes and illegal dumping response procedures.

### EVENT RECYCLING

**Supported** recycling for approximately 170,000 attendees at more than 50 events.

### CUSTOMER SERVICE

**Responded** to over 26,670 customer service requests and administrative transactions related to garbage and recycling via the Environmental Programs Information Line.

### STUDENT & COMMUNITY ENGAGEMENT

**Delivered** 38 recycling and waste reduction workshops with approximately 860 attendees, organized 10 DreamRider, Zero Heroes theatrical shows involving more than 3,710 students, hosted five Recycling Depot tours for 105 students and teachers, and participated at six community events to raise awareness about how to properly sort recyclables to reduce contamination.



## OUR GOALS

Richmond's long-term goal is to be a Recycling Smart City, and the annual goals listed below are designed to help achieve this target. Each goal is designed to make it easy and convenient to recycle and reduce waste in Richmond, as well as creating and promoting opportunities for innovation, partnership and continuous improvement.

1

### **Improve litter collection efficiency**

Install in-ground containers in high traffic and/or remote public spaces to address garbage capacity concerns and reduce service frequency, and implement new litter collection routes to maximize operational efficiency.

2

### **Enhance Recycling Depot**

Report on potential changes to the configuration of the Recycling Depot, including hours and days of operation, and items accepted.

3

### **Improve emergency preparedness**

Develop a Disaster Debris Management Plan for Richmond that aligns with the Metro Vancouver regional plan.

4

### **Expand demolition recycling**

Review and report progress on Demolition Waste and Recyclable Materials Bylaw No. 9516 as part of promoting expanded recycling of demolition materials.

5

### **Leverage public engagement**

Continue to raise awareness about how to recycle and the importance of responsible waste management through workshops, theatrical shows, digitally-led classroom activities, and support the 6th Annual REaDY Summit.

6

### **Increase recycling in multi-family complexes**

Work with Recycling Champions and property managers to increase recycling in multi-family complexes, with a focus on increasing food scraps recycling and reducing contamination.

7

### **Increase awareness about recycling**

Generate awareness about the types of materials that are recyclable in Richmond's programs and how to sort recyclables properly to reduce contamination.

8

### **Expand public spaces recycling options**

Leverage new bin options to provide convenient, accessible recycling, and enhance the container replacement and maintenance program.





# THANK YOU!

## THANK YOU TO RICHMOND RESIDENTS

Richmond residents continue to demonstrate their commitment to recycling, and as a result, Richmond is on track to achieve its goal for 80% waste diversion by 2020. Our thanks go to residents who take action every day to keep recyclables out of the garbage. In 2016, this partnership with our residents expanded to include individuals and organizations who are making an extra effort to promote increased recycling in the community.

We want to extend a special thank you to the residents who are participating in our Recycling Champions program. These residents are committed to recycling and are motivated to work with their neighbours to help others increase their recycling. This is particularly important in multi-family complexes, where recycling levels are behind those in single-family homes. Thanks to the contributions of the growing number of Recycling Champions in our community, we are looking forward to continuous improvement in these buildings.

Our thanks also go to the more than 50 organizations who hosted events in Richmond and leveraged the City's Event Recycling program to help promote recycling and responsible waste management. By planning ahead and setting up multiple recycling stations, these event organizers are showcasing how easy it is to encourage recycling at public events.

Recycling and waste diversion is most successful when all members of the community take responsibility for their waste. We are proud of how our community comes together, and with this partnership approach, we are confident we will achieve our goal to be a Recycling Smart City.

### DID YOU KNOW?

Food waste and non-flammable recyclable materials like paper, plastic containers, glass bottles and aluminium cans are banned from garbage. These materials will all be recycled through the City's convenient recycling programs.

# CONVENIENT, HIGH QUALITY AND RELIABLE SERVICES



# PROGRAMS AND SERVICES

## EXPANDING SERVICES TO MAKE RECYCLING EASY AND CONVENIENT

Richmond residents in single-family homes are now diverting 78% of their waste, and recycling is increasing in townhomes and other multi-family complexes. To support residents and their commitment to recycling, Richmond continues to expand services to help residents reduce their garbage and create incentives to promote increased recycling. Green Cart and Blue Box/Blue Cart recycling remain core services to help residents recycle. Residents can also drop off a growing list of recyclable items at the Richmond Recycling Depot and other drop-off facilities.

Richmond works with residents, industry partners, product stewardship groups and businesses to achieve its goal to be a Recycling Smart City and implement sustainable waste management. Through partnerships and community engagement, Richmond's commitment to continuous improvement results in enhanced services to benefit residents.



Residents in single-family homes are now diverting 78% of their waste.



## **RICHMOND RECYCLING AND WASTE MANAGEMENT**

Richmond delivers a wide range of recycling and waste management services for residents to ensure that all waste is managed effectively and efficiently. The following are the key recycling and waste management services offered through the City of Richmond.

### **BLUE BOX**

Weekly curbside collection for paper, newsprint, glass, plastic containers, empty aerosol cans, milk cartons, plastic/paper drink cups, spiral wound containers, and tin and aluminium containers. This program is provided to 40,155 residential units in single-family homes and townhomes. For details, see page 32.

### **BLUE CART**

Weekly recycling collection for paper, newsprint, glass, plastic containers, aerosol cans, milk cartons, plastic/paper drink cups, spiral wound containers and tin and aluminium containers. This program is provided to more than 33,725 multi-family units. For details, see page 34.

### **GREEN CART**

Collection for foods scraps and yard trimmings. This program is provided to residents in single-family homes and townhomes as well as multi-family complexes. For details, see page 36.

### **RECYCLING DEPOT**

Drop-off service for products ranging from yard trimmings and household items, to hazardous materials and take-back program products. This service is available to all residents and in limited quantities for commercial operators. The Recycling Depot also sells compost bins, rain barrels, Garbage Tags and Garbage Disposal Vouchers for use at the Vancouver Landfill. For details, see page 40.

### **GO! RECYCLE PUBLIC SPACES AND EVENT RECYCLING**

Recycling bins in the community make it easy to recycle on the go, such as in parks, at community centres, in the Steveston business district and at the Canada Line stations and Richmond central bus stops. Richmond supports community events by loaning garbage and recycling bins for local events at no charge.

### **COMPOSTING AT HOME**

Support for residential composting includes the sale of compost bins, a composting demonstration garden and related workshops. These services are available to all residents. For details, see page 37.





## CURBSIDE GARBAGE COLLECTION

Curbside collection of garbage, not including banned items such as hazardous waste and materials that can be recycled, is available to residents in single-family homes and some townhomes. For details, see page 38.

## EXTRA GARBAGE DISPOSAL

Garbage tags or disposal vouchers for the Vancouver Landfill provide options for residents when they need to dispose of additional garbage or large items. For details, see page 38.

## LARGE ITEM PICK UP PROGRAM

Residents in single-family homes, some townhomes and some multi-family complexes can arrange for collection of four large household items per year. For details, see page 39.

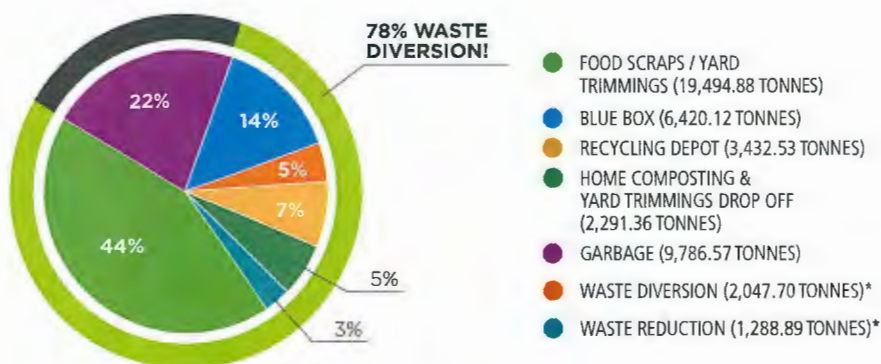
## COMMUNITY AND SCHOOL ENGAGEMENT

Through partnerships with students, teachers and the School District, Richmond sponsors educational shows, awareness programs and volunteer opportunities to increase understanding of recycling and the benefits of reducing waste. For details see the Outreach and Customer Service section on page 25.

### DID YOU KNOW?

Plastic takes hundreds of years to break down in a landfill, whereas recycled plastic can be used to make bottles, clothing, carpet, picnic tables, drainage pipes, bags, trash cans, paneling, flower pots and pallets.

## SINGLE-FAMILY RECYCLING



Residents in single-family homes recycled or reduced 34,975.48 tonnes in 2016 – 78% of total estimated waste generated – through a number of recycling and waste reduction opportunities, including curbside and Recycling Depot collection, as well as composting programs.

\* Estimated





## RESIDENTIAL RECYCLING PROGRAMS

With weekly collection services, drop-off programs, public spaces recycling and community take back programs, it's easy and convenient to recycle in Richmond. Richmond offers residents a range of services to support recycling at home and on the go.

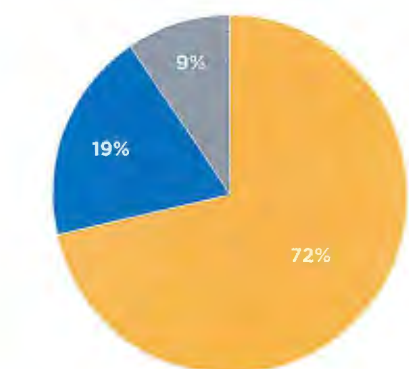
### BLUE BOX RECYCLING PROGRAM

The Blue Box recycling program provides convenient collection services in the community. Residents in single-family homes and some townhome complexes use the City's Blue Box program to recycle newspaper, paper products and cardboard along with tin, aluminium, glass bottles and jars, and plastic containers. More than 40,155 residential units are serviced with weekly collection under this program.

In 2016, more than 6,400 tonnes of materials were recycled in the Blue Box program. Of this, 72% was mixed paper, 9% was glass jars and bottles and 19% was mixed containers.

Items that can be recycled through this program are listed in the Tips and Resources section of this publication and at [www.richmond.ca/recycle](http://www.richmond.ca/recycle).

### 2016 BLUE BOX RECYCLING MIX



- MIXED PAPER (4,591.38 TONNES)
- GLASS (596.74 TONNES)
- CONTAINERS (1,232.00 TONNES)

## BLUE CART RECYCLING PROGRAM

People who live in multi-family complexes can recycle the same products as residents who use the Blue Box program through the City's Blue Cart recycling program. The City provides recycling carts for a mini-recycling depot at each complex, which is generally located in the recycling enclosure or other convenient location. This service is currently available to over 33,725 multi-family units, and the City has information tools such as Blue Cart decals, posters and brochures that are offered to stratas and property managers to help raise awareness and increase participation.

In 2016, more than 2,100 tonnes of materials were recycled through the Blue Cart recycling program.

It is important to recycle using the correct carts. For a detailed list of items that can be recycled through the Blue Cart recycling program, see the Tips and Resources section or visit [www.richmond.ca/recycle](http://www.richmond.ca/recycle).



## TIP FOR RESIDENTS

Residents in single-family homes and some townhomes can pick up complimentary Blue Box supplies at the Richmond Recycling Depot and City Hall.

Residents in multi-family complexes with Blue Cart service can pick up an indoor collection bag at the Richmond Recycling Depot or phone the Environmental Programs Information Line at 604-276-4010.







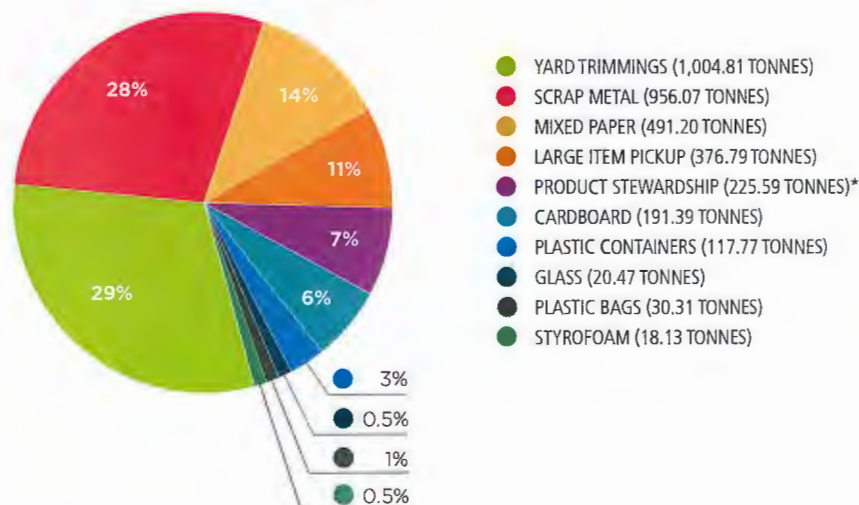
## RECYCLING DEPOT PROGRAM

The Richmond Recycling Depot is located at 5555 Lynas Lane and is open from 9:00 a.m. – 6:15 p.m., Wednesday to Sunday for drop off of a broad range of materials. The Recycling Depot also sells compost bins, rain barrels, Garbage Tags and Garbage Disposal Vouchers. The Richmond Recycling Depot is a product stewardship (take back) collection site for small appliances, paints, solvents, flammable liquids, pesticides, lights and lighting fixtures.

### RECYCLING DEPOT SERVICES

This facility accepts a wide range of materials including cardboard, yard and garden trimmings, mixed paper and newspapers, as well as Styrofoam, used books, cell phones, household batteries and plastic bags. The facility also accepts large appliances (e.g. fridges, stoves, washing machines), metal items (e.g. bike frames, barbecues, lawn mowers), glass bottles, jars, tin and aluminium cans, paints, pesticides and solvents. For a detailed list of items, see page 41. The Recycling Depot is owned and operated by the City of Richmond, with two full-time staff and additional staff support in the summer months to manage increased recycling volumes. Staff on site are available to answer questions and provide assistance with unloading awkward or heavy items.

### DEPOT RECYCLING: BREAKDOWN OF MATERIALS COLLECTED IN 2016



### TOTAL TONNAGE = 3,432.53

In 2016, 3,432.53 tonnes of recyclable materials were collected at the Recycling Depot. This includes yard trimmings, scrap metal, mixed paper products and rigid plastic containers. For more information on drop-off programs for yard trimmings, see page 17.

\* Estimated

## DEPOT RECYCLING: MATERIALS AND AMOUNTS COLLECTED THROUGH TAKE BACK PROGRAMS IN 2016



**PAINT**  
227,232  
EQUIVALENT  
LITRES



**AEROSOLS**  
4,200 EQUIVALENT  
LITRES



**SOLVENTS & PESTICIDES**  
12,960 EQUIVALENT  
LITRES



**SMALL APPLIANCES**  
79.71 TONNES



**CFLS**  
373 BOXES



**4' TUBES**  
320 BOXES



**8' TUBES**  
51 BOXES

### FOR SALE AT THE RECYCLING DEPOT

Residents can purchase the following items:

- Compost bins - \$25 each + GST
- Rain barrels - \$30 each + GST
- Extra Garbage Tags - \$2 each
- Garbage Disposal Vouchers - \$5 each for Richmond residents and it is worth up to \$25 at the Vancouver Landfill

### RECYCLE AT THE DEPOT

Richmond's free drop-off program includes:

- Styrofoam
- Batteries (household batteries 5 kg or under)
- Cell phones
- Used books
- Plastic bags and plastic overwrap
- Large and small appliances
- Scrap metal
- Yard and garden trimmings

For a full list of items that can be recycled at the Recycling Depot, see page 41.



### TIP FOR RESIDENTS

Fats, oils and grease should never be disposed down sinks, drains or garburators as the material hardens and builds up on the inside of sewage lines, causing blockages. This can lead to breaks and sewage spills or overflows. Recycle food scraps, grease solids and small amounts of cooking oil that can be absorbed with a paper towel in your Green Cart, and take used cooking oils and liquid fats in a sealed container to the Richmond Recycling Depot (5555 Lynas Lane, open Wednesday to Sunday from 9:00 a.m. to 6:15 p.m.) for free disposal.





## COMPOSTING PROGRAMS

Composting is a simple and organic process that can reduce household waste by up to 40%. Fruit and vegetable peelings, along with grass, leaves and other yard trimmings, can be added to a compost bin. In addition, composted matter produces a very nutrient-rich soil to keep lawns and gardens healthy.

### BACKYARD COMPOST BIN DISTRIBUTION PROGRAM

The City of Richmond supports composting by providing free composting workshops from January to November, which include information on backyard and worm composting and how to harvest compost. The City offers compost bins for sale at the Recycling Depot for \$25 plus tax each. Backyard composting is the most effective way to dispose of fruit and vegetable peelings, eggshells, coffee grounds, filters, tea bags and yard trimming materials. Since this program started in 1992, 10,741 compost bins have been distributed.

Additional tips and information on composting are provided in the Tips and Resources section and at [www.richmond.ca/recycle](http://www.richmond.ca/recycle).

### COMPOST DEMONSTRATION GARDEN

To help residents learn about backyard composting, the City offers a Compost Demonstration area in the Terra Nova Rural Park located at 2631 Westminster Highway just west of No.1 Road. It is open from dawn to dusk year-round, and is supplemented by workshops. Residents are encouraged to take a self-guided tour to learn about different types of compost bins and the benefits of composting.



### TIP FOR RESIDENTS

The Compost Hotline at 604-736-2250 offers tips and advice on how to compost and use the nutrient-rich soil produced for home gardens. Compost from yard trimmings drop-off programs and through the Green Cart collection programs is sold for use in the landscaping industry.



#### DID YOU KNOW?

When food scraps are disposed of in a landfill, the decomposition process creates methane. Methane is a powerful greenhouse gas that contributes to global warming.

## YARD TRIMMINGS DROP-OFF PROGRAMS

### ECOWASTE INDUSTRIES

The City offers residents the option to drop off unlimited quantities of yard and garden trimmings for free at Ecowaste Industries located at 15111 Triangle Road. Proof of Richmond residency is required. Commercial landscapers servicing residential properties are also eligible for free drop-off. They must apply for this exemption.

Visit [ecowaste.com](http://ecowaste.com) or call 604-277-1410 for hours of operation and directions.

### RICHMOND RECYCLING DEPOT

Residents may drop off limited quantities of yard and garden trimmings (up to 1 cubic yard) at the Richmond Recycling Depot. A fee of \$20 applies for each additional cubic yard. Commercial operators may also use the Recycling Depot to drop off yard trimmings for a fee of \$20 per cubic yard. The Recycling Depot is located at 5555 Lynas Lane and is open from 9:00 a.m. – 6:15 p.m., Wednesday to Sunday.

For a detailed list of all items that can be recycled at the Recycling Depot, please refer to the Tips and Resources section on page 41.

### DROP OFF TONNAGE IN 2016

In 2016, 3,652.82 tonnes of yard trimmings were collected at the Recycling Depot and through the Ecowaste residential and commercial drop-off service.

**1,004.81  
TONNES**

RECYCLING DEPOT

+

**2,648.01  
TONNES**

ECOWASTE INDUSTRIES

=

**3,652.82  
TONNES**





## GREEN CART PROGRAM

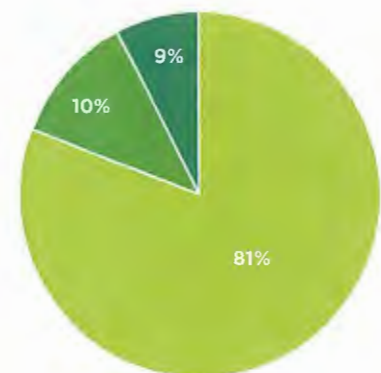
Richmond's Green Cart recycling program is available to all Richmond residents to ensure they have a convenient service to recycle food scraps, and yard and garden trimmings, which are banned from the garbage. Green Cart recycling totalled approximately 21,477.44 tonnes in 2016 – a 16% increase over 2015. The majority came from single-family homes followed by townhomes and apartments in multi-family housing sites.

Food scraps and yard trimmings represent about 40% of household waste, and the increase in Green Cart recycling along with Richmond's other recycling services has contributed to residents in single-family homes reducing their garbage by 78% in 2016. The Green Cart program is also an important service to support residents with an easy and convenient recycling option to meet requirements for Metro Vancouver's disposal ban on food scraps.

## RECYCLING WASTE TO REDUCE COSTS

By providing Green Cart recycling services, the City is helping residents avoid added costs for materials banned from disposal. Organics (including yard trimmings and food scraps) can no longer be tossed in the garbage. Surcharged fees are applied on any organics in garbage that exceed 5% (in 2017).

## 2016 RESIDENTIAL GREEN CART RECYCLING



- SINGLE-FAMILY HOMES (17,459.44 TONNES)
- TOWNHOMES (2,035.44 TONNES)
- APARTMENTS & CONDOMINIUMS (1,982.56 TONNES)

With the introduction of biweekly garbage collection, Richmond residents have reduced their garbage by 17%, which is equivalent to more than 2,000 tonnes.

## GARBAGE COLLECTION SERVICES

Richmond's curbside garbage collection services provide residents with convenient options for waste disposal. Household garbage is collected biweekly using City-provided garbage carts, and residents are offered curbside collection for up to four large household items through the City's Large Item Pick Up program.

### GARBAGE COLLECTION

In 2016, the City introduced its new Garbage Cart program, which included City-provided carts with wheels and lids, as well as a shift to biweekly collection to help reduce garbage and encourage recycling. The new Garbage Cart program is designed to lower costs for residents who are reducing their garbage by recycling their household waste.

Residents who select smaller cart sizes are generating less garbage and as a result, they pay less for their annual curbside garbage collection. Residents can exchange their cart for a different size, and their curbside garbage collection fees are adjusted according to the size selected.

With biweekly collection, residents have the same collection day; however, garbage is now collected biweekly (every other week) and recycling continues to be collected weekly. To support the new program implementation, the City communicated with residents using direct mail information kits, print advertising, transit shelter advertising, social media posts, website updates and an information kit that was distributed with the new carts. Residents also received an annual Garbage Collection Schedule, which is customized to each collection zone.

### GARBAGE CART SIZE OPTIONS



There are four standard sizes of Garbage Carts, and an additional Extra Small cart is available by request.





### NEW APP PROVIDES TIPS AND COLLECTION REMINDERS

Richmond has a new, free tool to support recycling and provide weekly collection reminders – the Richmond Collection Schedule app. The app includes an option to sign up for weekly reminders about curbside recycling and garbage collection as well as a Recycling Wizard tool that makes it easy to find out where to recycle various household items. This new app is available at the Apple and Android app stores. The Recycling Wizard is also available online at [www.richmond.ca/recyclesearch](http://www.richmond.ca/recyclesearch).

### EXTRA GARBAGE OPTIONS

For the occasions when residents have extra garbage, the City offers several options:

- Residents can purchase \$2 Garbage Tags for excess garbage bags/cans as needed.
- Use Richmond's Large Item Pick Up program for curbside collection of up to four large items each year. To schedule a large item pick up, residents call the City's service provider, Sierra Waste Services at 604-270-4722.
- A \$5 Garbage Disposal Voucher for the Vancouver Landfill (one per Richmond household per year) can be purchased at City facilities. The voucher is good for up to \$25 in value for garbage drop off at the Vancouver Landfill located at 5400 72nd Street, Delta. For more information, call 604-276-4010.

### GARBAGE DISPOSAL OVER THE YEARS



As conscientious recyclers, residents have drastically reduced the amount of garbage disposed since 1990. The City continues to improve and adapt services to support increased recycling and to help reduce garbage.





### LARGE ITEM PICK UP PROGRAM

Richmond's Large Item Pick Up program provides curbside collection of up to four large items per year. This program is provided to residents in single-family homes, as well as townhomes and multi-family complexes with the City's garbage collection and/or Blue Box program. This service makes it easier for residents who do not have access to a vehicle to dispose of large items. Residents can contact the City's service provider at 604-270-4722 to arrange for collection of up to four large items per year. All four large items can be picked up at the same time, or in varying bundles for a total of four items annually.

Items accepted in this program include furniture, appliances and small household goods. Restrictions apply to ensure items can be handled safely and mattresses must be covered in plastic to keep them dry. If residents have more than four large items to dispose of, they can purchase a Garbage Disposal Voucher for \$5 from any City facility and use the voucher to dispose of up to \$25 worth of garbage items at the Vancouver Landfill.

For more information on this program, see page 39 or visit [www.richmond.ca/recycle](http://www.richmond.ca/recycle).

APPROXIMATELY **8,501** REQUESTS FOR SERVICE



**2,976**  
MATTRESSES &  
BOXSPRINGS



**597**  
WASHERS & DRYERS



**420**  
TELEVISIONS



**620**  
FRIDGES & FREEZERS



**432**  
BARBECUES



**180**  
DISHWASHERS

**535** TONNES WERE COLLECTED  
AND OF THIS, **288**  
TONNES WERE RECYCLED



**255**  
STOVES



**56**  
MICROWAVES



**1,131**  
OTHER

**7,319**  
NON-RECYCLABLE HOUSEHOLD ITEMS COLLECTED  
FOR SAFE HANDLING AND DISPOSAL

**13,986** ITEMS COLLECTED



## LITTER COLLECTION SERVICES

Maintaining a litter-free city is a key focus area to ensure residents can enjoy clean parks and public spaces. The City of Richmond has made efforts to ensure that there are garbage cans, and in many cases recycling options, in public spaces throughout the city.

In addition, City crews work seven days a week to collect litter from parks, school grounds, roadsides, sidewalks and boulevards. They inspect or service garbage and recycling from litter and recycling receptacles in the community 23,339 times every month. Crews also assist with removing graffiti from City garbage cans, and they collect illegally-dumped materials found on City property and provide safe disposal and recycling of these items. Together, these measures help to support a safe and appealing community.

### DID YOU KNOW?

The City sponsors engaging programs at elementary schools to teach students about reducing litter, and promotes a litter-free community through its Partners for Beautification Program.

**BINS INSPECTED OR SERVICED 23,339 TIMES PER MONTH OR APPROXIMATELY 280,000 TIMES PER YEAR**

**CREWS TRAVEL 2,840 KILOMETRES PER WEEK TO INSPECT AND SERVICE BINS**





Example of a well-designed garbage and recycling room. Courtesy of Concert Properties

## COMMERCIAL AND MULTI-FAMILY DEVELOPMENT GUIDELINES

Richmond is developing a new resource guide to assist owners, developers and designers in the development of appropriate recycling and waste storage systems for multi-family and commercial complexes. Following the recommended strategies in the guide will help streamline the development application process by ensuring key requirements are met as part of the initial application.

Recycling and waste management are integral to the development and planning process for multi-family and commercial complexes. Richmond's resource guide is intended to assist owners, developers and designers to ensure development applications for multi-family and commercial complexes include recycling and waste storage systems that meet government regulations and comply with Metro Vancouver disposal bans. These guidelines are designed to address common design issues, ensure adequate space to accommodate bins to meet disposal ban requirements (including food scraps recycling), ensure well-designed recycling areas that are easy to use or access, and provide adequate space for height clearance and turning radius for collection vehicles.

### GOALS AND OBJECTIVES

The goals of effective garbage and recycling programs for multi-family and commercial complexes are to provide efficient recycling and garbage services and to achieve targeted waste diversion while minimizing contamination in recycling. The following objectives support these goals:

- Create building design to support convenient access to full range of recycling services.
- Minimize contamination of recycling by designing areas to accommodate convenient grouping of recycling types and space for instructional signage.
- Create building design to ensure sufficient space is allocated for collection of materials, including turn radius and height clearance for automated collection trucks.
- Create efficient centralized collection areas with sufficient space for recycling and garbage carts/bins to help avoid unsightly premises caused by overflowing carts/bins.





# **NEW PARTNERSHIPS TO INCREASE RECYCLING**

**PWT - 73**

# OUTREACH AND CUSTOMER SERVICE

## SUPPORTING AWARENESS AND EDUCATION

Richmond recognizes that providing recycling services is the first important step in reducing waste; however, the second critical step is communication and community engagement. This includes informing residents about City and partner programs and services available in the community, educating them on how to use the programs, raising awareness about why recycling and reducing waste is important, and engaging the community to help design programs that fit their needs and priorities. The third essential step is providing excellent customer service. With its commitment to community outreach and customer service, the City goes beyond providing services – it supports residents so they can be successful in reducing their waste.



In 2016, approximately 153 youth volunteered more than 2,660 hours in Richmond's Green Ambassador program to support recycling awareness at events and outreach displays.





## CUSTOMER SERVICE

Richmond's successful outreach and customer service programs are designed to help turn information and education into action. By working with children and youth through school programs and the Green Ambassadors, Richmond creates a learning environment where students gain a better understanding about recycling and sustainable waste management, and then apply their skills as volunteers and through school activities. Providing outreach, customer support services and information materials also assists residents by increasing their understanding of how to recycle along with new tools and services to promote recycling at home and on the go.

The Environmental Programs Information Line staff assisted customers with more than 26,000 service requests in 2016, answering questions, assisting with requests relating to garbage and recycling and providing guidance on where to go for additional information and resources. Richmond also assists customers directly at the Recycling Depot, and through its outreach programs in the community.

At the Depot, staff provide assistance with where and how to recycle using its drop-off options, answer questions about City programs and services and sell products such as compost bins and rain barrels as well as Garbage Tags and Garbage Disposal Vouchers. Through outreach, Richmond goes into the community to connect with residents to share information and respond to questions.

**26,670**  
CUSTOMER SERVICE  
CALLS SUPPORTED

**8,770**  
GARBAGE TAGS SOLD

**700**  
GARBAGE DISPOSAL  
VOUCHERS SOLD

**65** COMPOST  
BINS SOLD



Richmond recognizes the importance of working with community members to achieve its waste reduction goals. This outreach includes engaging students to raise awareness about the importance of recycling and reducing garbage, as well as creating opportunities for residents to become leaders in the community. The City is also proud to sponsor events and workshops to encourage recycling and provide tips and instructions on how to manage waste responsibly.

## 2016 HIGHLIGHTS

### ENGAGING STUDENTS

In 2016, Richmond sponsored the DreamRider Zero Heroes show at 10 schools, engaging 3,534 students from kindergarten to grade seven and approximately 177 teachers to raise awareness and inspire them to reduce waste. The participants learned about solid waste reduction and received tools to take home to share with their family and friends. In the survey following the shows, 100% of teachers surveyed agreed that the performance was "Outstanding/Very Good" and that the educational content of this show was "Very Valuable", and 89% of teachers surveyed said DreamRider was "Very Effective" at inspiring children to change their environmental behaviours.

### RICHMOND GREEN AMBASSADORS

Richmond's Green Ambassadors are dedicated high school students who participate in monthly symposiums to learn about environmental sustainability and apply what they have learned as volunteers at City events and activities. In 2016, 153 students in the program contributed more than 2,660 volunteer hours to promote recycling at community events and organize the REaDY Summit. These energetic and environmentally conscious individuals also manage green initiatives in their school.

### RICHMOND RECYCLING CHAMPIONS

Richmond's Recycling Champion program is designed to support residents who are interested in helping their neighbours increase recycling and reduce garbage. This City-sponsored program provides these resident leaders with tips and resources that they can share with other residents to help increase understanding of how to recycle correctly and why it is important to divert waste from landfills. In its first year, 40 residents signed up to be Recycling Champions.

### RICHMOND HOSTS 5<sup>TH</sup> ANNUAL EARTH DAY SUMMIT

The 2016 REaDY Summit showcased how community partners, students and residents can come together to celebrate sustainable actions that can trigger a positive change in our community. Summit participants included 35 student volunteers from 15 Richmond schools, as well as residents from five municipalities. Thanks to help from student volunteers, 95% of the waste from the event was recycled. This year's Summit featured two youth-led keynote presentations and the opening ceremony included speeches by four students between grades three to nine who spoke on the topic "Change Happens Now: The World is Rooted in Our Backyard".



## EVENT RECYCLING

Recycling stations are required for all special event bookings taking place in Richmond. For some events, the City hosts recycling stations with assistance from the Green Ambassador volunteers. This involves setting up recycling stations and having recycling assistants at the event to advise people on how to recycle. In 2016, the City hosted recycling stations at 19 events, including the Public Works Open House, Children's Art Festival, Move for Health, Doors Open, COOL Expo, Halloween Fireworks, Ship to Shore Festival, Salmon Festival and Maritime Festival. Typically, very high diversion rates are achieved thanks to the efforts of the City's Green Ambassadors. Examples include:

- Ship to Shore – 90% diversion rate
- Steveston Salmon Festival – 93% diversion rate
- Maritime Festival – 93% diversion rate
- World Festival – 79% diversion rate

The City also supports events by providing organizers with recycling bins and garbage carts at no charge, as well as complimentary collection services. This makes it easy for event organizers to keep the venue clean and recyclables out of the landfill. In 2016, 50 event organizers used the City's event recycling program to help keep recyclable materials out of the garbage at events.

## GREAT CANADIAN SHORELINE CLEAN-UP

Jointly led by the Vancouver Aquarium and World Wildlife Foundation, the Great Canadian Shoreline Clean-Up focuses on educating and empowering people to make a difference through community clean-up events. As part of this initiative, Environmental Programs partnered with Parks to support 42 community clean-up events on the City's waterfront.





## COMMUNITY WORKSHOPS

Richmond's free community workshops provide education and tips that support recycling and waste reduction techniques. In 2016, the City hosted 38 community workshops with a total of 859 participants. A summary of workshops that focus on helping residents towards the City's goal for 80% waste diversion is provided below.

For information on the workshops, email [esoutreach@richmond.ca](mailto:esoutreach@richmond.ca). To attend free workshops offered by the City, visit [richmond.ca/register](http://richmond.ca/register) for workshop details and registration information.

COMMUNITY WORKSHOPS			
TYPE OF WORKSHOP	NUMBER OF WORKSHOPS	NUMBER OF PARTICIPANTS	DESCRIPTION
<b>Composting Workshops</b>	2	31	Learn simple compost harvesting techniques and how to effectively convert food and yard waste into an organic soil conditioner.
<b>Do-it-yourself Recycling Workshops</b>	5	46	Turn second hand items into amazing treasures such as pallet gardens, stationery items, holiday-themed gift baskets and repurposing old clothing into new knit or crocheted items.
<b>Food Waste Reduction Workshops</b>	21	477	Reduce food waste by learning harvesting, freezing/canning, and fermenting techniques to store foods.
<b>Eco-cleaning</b>	2	49	Homemade household cleaners work well, save money and are less harmful to people, animals and the environment. With a few easy steps, participants learn to make and use eco-friendly cleaners.
<b>Recycling Workshops</b>	8	256	Learn how to sort household recyclables properly to reduce contamination. Understand the recycling process and the importance recycling has on the environment.
<b>Total</b>	<b>38</b>	<b>859</b>	

# PROGRAMS & PARTNERSHIPS IN WASTE MANAGEMENT

PWT - 79



# TIPS AND RESOURCES

## EASY STEPS TO INCREASE RECYCLING AND REDUCE WASTE

In Richmond, we care about our community, and we are working together to trim our waste. The City works with residents and community partners to make it easy and convenient to reuse and recycle at home and on the go. It's all about making recycling a way of life. This at-a-glance resource on the various types of recycling programs and services available through the City of Richmond is a valuable guide to support being recycling smart in Richmond. The Tips and Resources include highlights such as how and where to recycle, what to do with hazardous waste and where to find additional information.

Resources also include contact information and locations for Richmond services and community partners involved in take back collection through product stewardship programs. Together these Tips and Resources help to support maximum recycling with minimum contamination in the waste going to the landfill.



Richmond's Environmental Program staff share information on tips and resources by phone, through outreach events and on the website.



## BLUE BOX

Richmond's Blue Box recycling program provides convenient collection for residents in single-family homes and some townhomes to recycle mixed paper, plastic containers, milk cartons, paper and plastic drink cups, flower pots, empty aerosol cans and spiral wound tins like frozen juice concentrate containers as well as glass bottles and jars, which are separated into the grey Glass Recycling Bin.

Recyclable materials from the Blue Box program are collected from single-family homes and some townhome complexes on the same day that garbage is collected. Containers are placed into the Blue Box, glass bottles and jars are placed in the grey Glass Recycling Bin and all paper products, including newspaper and flattened cardboard are placed in the yellow Mixed Paper Recycling Bag. Blue Boxes are available in two sizes: regular (16 gallons) and tall (22 gallons) for extra capacity.

It is important to ensure materials are sorted correctly into the proper recycling receptacles. For example, recyclables must be placed individually in bins – not stacked, nestled, or in plastic bags. Also, plastics like toys, hangers and laundry hampers are not accepted in the Blue Box but can be brought to the Richmond Recycling Depot.

For a list of items accepted in Blue Box recycling, see page 33 or visit [www.richmond.ca/recycle](http://www.richmond.ca/recycle).

### Set Out Time

Before 7:30 a.m. on collection day.

### Report a Missed Collection

Call 604-276-4010 or email [garbageandrecycling@richmond.ca](mailto:garbageandrecycling@richmond.ca).

### How to Get a Mixed Paper Recycling Bag, Glass Recycling Bin or Blue Box

There is no charge for new or replacement Blue Boxes, Glass Recycling Bins or Mixed Paper Recycling Bags.

For additional Blue Box supplies call 604-276-4010 or pick them up at the following locations:

### Richmond Recycling Depot

5555 Lynas Lane  
Wednesday to Sunday (Closed on Mondays, Tuesdays & Statutory Holidays)  
9:00 a.m. to 6:15 p.m.

### City Hall

6911 No. 3 Road  
Monday to Friday (Closed on Saturdays, Sundays & Statutory Holidays)  
8:15 a.m. to 5:00 p.m.

Please note: Tall Blue Boxes are only available at the Richmond Recycling Depot.



## WHAT GOES WHERE:



## MIXED PAPER RECYCLING BAG

ACCEPTED	HOW TO RECYCLE	NOT ACCEPTED
<ul style="list-style-type: none"> <li>✓ Newspapers, inserts &amp; flyers</li> <li>✓ Flattened cardboard boxes</li> <li>✓ Catalogues &amp; magazines</li> <li>✓ Cereal boxes</li> <li>✓ Clean pizza boxes</li> <li>✓ Corrugated cardboard (small pieces)</li> <li>✓ Envelopes</li> <li>✓ Junk mail</li> <li>✓ Paper bags</li> <li>✓ Paper egg cartons</li> <li>✓ Paper gift wrap &amp; greeting cards</li> <li>✓ Telephone books</li> <li>✓ Shredded paper (place inside a paper bag to avoid scattering)</li> <li>✓ Writing paper (notepads, loose leaf paper, white or coloured paper, printed paper)</li> </ul>	<ul style="list-style-type: none"> <li>• Remove plastic liners/covers.</li> <li>• Remove any food residue.</li> <li>• Flatten boxes.</li> <li>• <b>Place in Mixed Paper Recycling Bag.</b></li> <li>• Cardboard bundle size: 3 ft x 2 ft x 4 in (90 cm x 60 cm x 10 cm)</li> </ul> <p><i>Note:</i> Oversized/excessive amounts of cardboard can be dropped off at the City's Recycling Depot at 5555 Lynas Lane.</p>	<ul style="list-style-type: none"> <li>✗ Cardboard boxes with wax coating</li> <li>✗ Plastic bags used to cover newspapers/flyers</li> <li>✗ Metallic wrapping paper</li> <li>✗ Ribbons or bows</li> <li>✗ Musical greeting cards with batteries</li> <li>✗ Padded envelopes</li> <li>✗ Plastic or foil candy wrappers</li> </ul>

## GLASS RECYCLING BIN

ACCEPTED	HOW TO RECYCLE	NOT ACCEPTED
<ul style="list-style-type: none"> <li>✓ Clear or coloured glass bottles &amp; jars (pickle jars, jam jars, spaghetti sauce jars, soy sauce bottles)</li> </ul>	<ul style="list-style-type: none"> <li>• Remove lids &amp; caps.</li> <li>• Remove food residue.</li> <li>• Empty &amp; rinse.</li> <li>• <b>Place in Glass Recycling Bin.</b></li> </ul>	<ul style="list-style-type: none"> <li>✗ Glasses, dishes, cookware, window glass or mirrors</li> <li>✗ Ceramic products</li> <li>✗ Lids &amp; caps (place in Blue Box)</li> </ul>

## BLUE BOX FOR CONTAINERS

ACCEPTED	HOW TO RECYCLE	NOT ACCEPTED
<ul style="list-style-type: none"> <li>✓ Empty aerosol cans &amp; caps (food items, air fresheners, shaving cream, deodorant, hairspray)</li> <li>✓ Microwavable bowls, cups &amp; lids</li> <li>✓ Paper food containers &amp; cartons (ice-cream, milk, liquid whipping cream)</li> <li>✓ Paper &amp; plastic drink cups with lids</li> <li>✓ Plastic containers, trays &amp; caps (bakery containers &amp; deli trays)</li> <li>✓ Plastic and paper garden pots &amp; trays</li> <li>✓ Spiral wound paper cans &amp; lids (frozen juice, potato chips, cookie dough, coffee, nuts, baby formula)</li> <li>✓ Aluminium cans &amp; lids</li> <li>✓ Aluminium foil &amp; foil containers (foil wrap, pie plates, food trays)</li> <li>✓ Plastic bottles &amp; caps (food items, condiments such as ketchup, mustard &amp; relish, dish soap, mouthwash, shampoos, conditioners)</li> <li>✓ Plastic jars &amp; lids</li> <li>✓ Plastic tubs &amp; lids (margarine, spreads, dairy products such as yogurt, cottage cheese, sour cream, ice cream)</li> <li>✓ Tin cans &amp; lids</li> </ul>	<ul style="list-style-type: none"> <li>• Remove food residue.</li> <li>• Remove caps or lids; place loose in the Blue Box.</li> <li>• Empty and rinse.</li> <li>• <b>Place in Blue Box.</b></li> </ul> <p><i>Note:</i> Flatten containers where possible.</p>	<ul style="list-style-type: none"> <li>✗ Aerosol cans with hazardous materials (spray paint) or with remaining content*</li> <li>✗ Ceramic plant pots</li> <li>✗ Compostable/biodegradable plastic bags &amp; containers</li> <li>✗ Containers for motor oil, vehicle lubricant or wax products</li> <li>✗ Foil-lined cardboard lids from take-out containers</li> <li>✗ Garden hoses</li> <li>✗ Plastic bags &amp; over wrap*</li> <li>✗ Plastic string or rope</li> <li>✗ Styrofoam materials*</li> </ul> <p>* Take to the Richmond Recycling Depot</p>



## BLUE CART

All multi-level multi-family complexes like apartments and condominiums and some townhomes have a recycling depot with Blue Carts for recycling mixed paper, plastic containers, milk cartons, paper and plastic drink cups, flower pots, empty aerosol cans and spiral wound tins like frozen juice concentrate containers as well as glass bottles and jars, which are separated into the Glass Recycling Cart. They are generally located in the garbage room or other convenient location.

For sorting recycling, containers are placed in the Containers Recycling Cart, glass bottles and jars are placed in the Glass Recycling Cart and paper products including newspaper and flattened cardboard are placed in the Mixed Paper Recycling Cart. These recyclable materials are banned from landfill.

The carts are emptied once a week. Statutory holidays do not generally affect the collection; however, Christmas Day may delay collection by one day if it falls on a weekday. For information about the recycling depot location in your building, contact your building manager or property manager.

It is important to ensure materials are sorted correctly into the proper recycling carts. For example, recyclables must be placed individually in carts – not stacked, nestled, or in plastic bags. Also, plastics like toys, hangers and laundry hampers are not accepted in the Blue Cart but can be brought to the Richmond Recycling Depot.

For a list of items accepted in Blue Cart recycling, see page 35 or visit [www.richmond.ca/recycle](http://www.richmond.ca/recycle).

### Cart Emptying

Some carts are retrieved from their site, however, some are brought out to a collection area.

Carts brought out must be at the collection area before 7:30 a.m.

### Report a Missed Collection

Call 604-276-4010 or email [garbageandrecycling@richmond.ca](mailto:garbageandrecycling@richmond.ca).

### How to Get an Indoor Collection Bag for Blue Cart Recycling

There is no charge for new or replacement Blue Cart recycling bags. For additional bags call 604-276-4010 or pick them up at the following locations:

#### City Recycling Depot

5555 Lynas Lane  
Wednesday to Sunday (Closed on Mondays, Tuesdays & Statutory Holidays)  
9:00 a.m. to 6:15 p.m.

#### City Hall

6911 No. 3 Road  
Monday to Friday (Closed on Saturdays, Sundays & Statutory Holidays)  
8:15 a.m. to 5:00 p.m.



## WHAT GOES WHERE:



## MIXED PAPER RECYCLING CART

ACCEPTED	HOW TO RECYCLE	NOT ACCEPTED
<ul style="list-style-type: none"> <li>✓ Newspapers, inserts &amp; flyers</li> <li>✓ Flattened cardboard boxes</li> <li>✓ Catalogues &amp; magazines</li> <li>✓ Cereal boxes</li> <li>✓ Clean pizza boxes</li> <li>✓ Corrugated cardboard (small pieces)</li> <li>✓ Envelopes</li> <li>✓ Junk mail</li> <li>✓ Paper bags</li> <li>✓ Paper egg cartons</li> <li>✓ Paper gift wrap &amp; greeting cards</li> <li>✓ Telephone books</li> <li>✓ Shredded paper (place inside a paper bag to avoid scattering)</li> <li>✓ Writing paper (notepads, loose leaf paper, white or coloured paper, printed paper)</li> </ul>	<ul style="list-style-type: none"> <li>• Remove plastic liners/covers.</li> <li>• Remove any food residue.</li> <li>• Flatten boxes.</li> <li>• Cut cardboard into small pieces – 12 in x 12 in (30 cm x 30 cm)</li> <li>• <b>Place in Mixed Paper Recycling Cart.</b></li> </ul> <p><i>Note:</i> Oversized/excessive amounts of cardboard can be dropped off at the City's Recycling Depot at 5555 Lynas Lane.</p>	<ul style="list-style-type: none"> <li>✗ Cardboard boxes with wax coating</li> <li>✗ Plastic bags used to cover newspapers/flyers</li> <li>✗ Metallic wrapping paper</li> <li>✗ Ribbons or bows</li> <li>✗ Musical greeting cards with batteries</li> <li>✗ Padded envelopes</li> <li>✗ Plastic or foil candy wrappers</li> </ul>

## GLASS RECYCLING CART

ACCEPTED	HOW TO RECYCLE	NOT ACCEPTED
<ul style="list-style-type: none"> <li>✓ Clear or coloured glass bottles &amp; jars (pickle jars, jam jars, spaghetti sauce jars, soy sauce bottles)</li> </ul>	<ul style="list-style-type: none"> <li>• Remove lids &amp; caps.</li> <li>• Remove food residue.</li> <li>• Empty &amp; rinse.</li> <li>• <b>Place in Glass Recycling Cart.</b></li> </ul>	<ul style="list-style-type: none"> <li>✗ Glasses, dishes, cookware, window glass or mirrors</li> <li>✗ Ceramic products</li> <li>✗ Lids &amp; caps (place in Containers Recycling Cart)</li> </ul>

## CONTAINERS RECYCLING CART

ACCEPTED	HOW TO RECYCLE	NOT ACCEPTED
<ul style="list-style-type: none"> <li>✓ Empty aerosol cans &amp; caps (food items, air fresheners, shaving cream, deodorant, hairspray)</li> <li>✓ Microwavable bowls, cups &amp; lids</li> <li>✓ Paper food containers &amp; cartons (ice-cream, milk, liquid whipping cream)</li> <li>✓ Paper &amp; plastic drink cups with lids</li> <li>✓ Plastic containers, trays &amp; caps (bakery containers &amp; deli trays)</li> <li>✓ Plastic and paper garden pots &amp; trays</li> <li>✓ Spiral wound paper cans &amp; lids (frozen juice, potato chips, cookie dough, coffee, nuts, baby formula)</li> <li>✓ Aluminium cans &amp; lids</li> <li>✓ Aluminium foil &amp; foil containers (foil wrap, pie plates, food trays)</li> <li>✓ Plastic bottles &amp; caps (food items, condiments such as ketchup, mustard &amp; relish, dish soap, mouthwash, shampoos, conditioners)</li> <li>✓ Plastic jars &amp; lids</li> <li>✓ Plastic tubs &amp; lids (margarine, spreads, dairy products such as yogurt, cottage cheese, sour cream, ice cream)</li> <li>✓ Tin cans &amp; lids</li> </ul>	<ul style="list-style-type: none"> <li>• Remove food residue.</li> <li>• Remove caps or lids; place loose in the Blue Cart.</li> <li>• Empty and rinse.</li> <li>• <b>Place in Containers Recycling Cart.</b></li> </ul> <p><i>Note:</i> Flatten containers where possible.</p>	<ul style="list-style-type: none"> <li>✗ Aerosol cans with hazardous materials (spray paint) or with remaining content*</li> <li>✗ Ceramic plant pots</li> <li>✗ Compostable/biodegradable plastic bags &amp; containers</li> <li>✗ Containers for motor oil, vehicle lubricant or wax products</li> <li>✗ Foil-lined cardboard lids from take-out containers</li> <li>✗ Garden hoses</li> <li>✗ Plastic bags &amp; over wrap*</li> <li>✗ Plastic string or rope</li> <li>✗ Styrofoam materials*</li> </ul> <p>* Take to the Richmond Recycling Depot</p>

## GREEN CART

Food scraps are banned from the garbage, which means they must be recycled or composted. With the Green Cart program, all Richmond residents have access to food scraps recycling and when you recycle with a Green Cart, you are helping turn food scraps and yard trimmings into compost for nutrient-rich soil.

Residents with curbside collection may continue to use Green Cans for excess food scraps and yard trimmings. Paper yard waste bags and tied bundles of yard trimmings are also accepted. Please visit [www.richmond.ca/greencart](http://www.richmond.ca/greencart) for more information.

Please note that Green Carts stay with the property. Residents with curbside collection may exchange their Green Cart for a different size for \$25. If residents move to another house in Richmond, they will have a Green Cart at that location. If there is no cart, or to exchange a cart size, please call 604-276-4010.

### WHAT GOES IN THE GREEN CART:



ACCEPTED		HOW TO RECYCLE	NOT ACCEPTED
<b>FOOD SCRAPS &amp; FOOD SOILED PAPER</b> <ul style="list-style-type: none"> <li>✓ Breads, pasta, rice &amp; noodles</li> <li>✓ Coffee grounds &amp; filters</li> <li>✓ Dairy products</li> <li>✓ Fruit</li> <li>✓ Eggshells</li> <li>✓ Meat, poultry, fish, shellfish &amp; bones</li> <li>✓ Paper towels/napkin/plates</li> <li>✓ Pizza delivery boxes</li> <li>✓ Small amounts of grease/oil absorbed into paper towel</li> <li>✓ Solid grease</li> <li>✓ Table scraps &amp; food scrapings</li> <li>✓ Tea bags</li> <li>✓ Vegetables</li> </ul>	<b>YARD TRIMMINGS</b> <ul style="list-style-type: none"> <li>✓ Flowers</li> <li>✓ Leaves</li> <li>✓ Grass clippings</li> <li>✓ Other organic yard materials</li> <li>✓ Plants (living or dead/dried)</li> <li>✓ Plant trimmings</li> <li>✓ Tree &amp; hedge prunings</li> </ul>	<ul style="list-style-type: none"> <li>• Collect food scraps in your kitchen container.</li> <li>• Empty materials from your kitchen container into your <b>Green Cart</b>.</li> <li>• Place yard trimmings into <b>Green Cart</b> along with your food scraps (Extra yard trimmings can go in large paper bags or additional labelled Green Cans).</li> <li>• Place your Green Cart at the curb along with unlimited paper yard trimmings bags and/or Green Cans, Blue Box recycling and garbage by 7:30 a.m. on your regular collection day.</li> </ul> <p><i>Note:</i> For centralized Green Cart service, the collection details are arranged between the City and the strata council or property manager. Residents do not have to set the carts out for pick up.</p>	<ul style="list-style-type: none"> <li>✗ Coffee cups</li> <li>✗ Compostable and biodegradable plastic bags</li> <li>✗ Styrofoam cups, meat trays or takeout containers</li> <li>✗ Garden hoses or flower pots</li> <li>✗ Liquid grease</li> <li>✗ Lumber</li> <li>✗ Pet feces or kitty litter</li> <li>✗ Plastic bags and plastic overwrap</li> <li>✗ Plastic wraps</li> <li>✗ Prunings over 4 inches (10 cm) in diameter</li> <li>✗ Rocks, dirt or sod</li> </ul>

#### Yard Trimmings Drop-off Locations

Richmond residents and commercial landscapers can drop off yard trimmings (see above for materials accepted) at the following locations.

##### Ecowaste Industries

15111 Triangle Road  
Open Monday to Friday from 7:00 a.m. to 4:30 p.m. (last load in at 4:15 p.m.)

Open Saturday from 8:00 a.m. to 4:00 p.m. (last load in at 3:45 p.m.). Closed Sundays.

Commercial operators will be charged a fee unless pre-approved for servicing residential properties in Richmond.

Visit [ecowaste.com](http://ecowaste.com) or call 604-277-1410 for detailed information.

##### City Recycling Depot

5555 Lynas Lane  
Wednesday to Sunday (Closed on Mondays, Tuesdays & Statutory Holidays)  
9:00 a.m. to 6:15 p.m.

There is no charge for dropping off amounts less than one cubic yard (a car, station wagon or minivan load). Large loads are charged a fee of \$20 per cubic yard. Commercial operators will be charged a fee of \$20 per cubic yard at the Richmond Recycling Depot.





## HOME COMPOSTING

Home composting turns your food scraps and yard trimmings into nutrient-rich soil that can be spread on lawns and flowerbeds.

### BACKYARD COMPOST BIN

"Garden Gourmet" compost bins are available to Richmond residents at the Recycling Depot for \$25 plus tax. The bin dimensions are 36 inches (90 cm) high, 22 inches (56 cm) wide and 22 inches (56 cm) deep. They are suitable for residential backyard composting of grass, leaves, vegetable trimmings, fruit trimmings and other miscellaneous organic garden trimmings.

### COMPOST HOTLINE

The Compost Hotline offers support and tips for best practices in home composting. It is operated by City Farmer, which has researched and promoted the best methods of urban composting since 1978.

#### Compost Hotline

Phone: 604-736-2250

Email: [composthotline@telus.net](mailto:composthotline@telus.net)

### COMPOST DEMONSTRATION GARDEN

A compost demonstration garden is located at 2631 Westminster Highway in the Terra Nova Rural Park. Composting demonstration units are on display for viewing year-round, from dawn to dusk.



#### Nitrogen Rich Green Materials:

- PLANT TRIMMINGS
- FRUIT & VEGETABLE PEELINGS
- FRESH GRASS CLIPPINGS
- COFFEE GROUNDS & TEA LEAVES

#### Carbon Rich Brown Materials:

- DRY LEAVES
- SAWDUST
- STRAW
- SHREDDED NEWSPAPER CLIPPINGS

### HOW TO COMPOST

- 1 USING A BACKYARD COMPOST BIN, START WITH A GOOD LAYER OF COARSE ORGANIC MATERIAL, SUCH AS STRAW, LEAVES OR PRUNING AT THE BOTTOM TO ALLOW AIR TO CIRCULATE.
- 2 ADD A GOOD LAYER OF NITROGEN-RICH GREEN MATERIAL FOLLOWED BY ONE LAYER OF CARBON-RICH BROWN MATERIAL, UNTIL THE BIN IS FULL.
- 3 COMPOST REQUIRES AIR. TURN AND STIR YOUR COMPOST WEEKLY SO THE ORGANISMS GET NECESSARY OXYGEN.
- 4 COMPOST REQUIRES MOISTURE. WATER YOUR COMPOST BIN FREQUENTLY, TO ENSURE IT STAYS AS MOIST AS A WRUNG-OUT SPONGE.
- 5 GIVE IT TIME - IN 12-18 MONTHS, MATERIAL AT THE BOTTOM AND MIDDLE OF THE BIN SHOULD BE COMPOSTED. USE THIS THROUGHOUT YOUR GARDEN. USE THE UN-COMPOSTED MATERIAL TO START A NEW BATCH. CHIPPING OR CHOPPING THE MATERIAL CAN INCREASE THE SPEED OF THE PROCESS. REGULAR AERATION IS KEY TO SUCCESSFUL COMPOSTING.

## GARBAGE COLLECTION

### CURBSIDE COLLECTION SERVICE

#### Biweekly Garbage Cart Program

Garbage Carts are collected biweekly (every other week). Annual curbside garbage collection fees are based on the size of the cart – the smaller the cart, the lower the fees. Residents may exchange their Garbage Cart for a different size for \$25 by calling 604-276-4010.

For cart size options and related fees, visit [www.richmond.ca/garbage](http://www.richmond.ca/garbage).

#### Preparing Garbage for Collection

It's important to secure or wrap loose garbage to prevent loose materials from being scattered by wind or animals. Garbage must be securely packed in plastic bags. This includes ashes, kitty litter, disposable diapers, vacuum cleaner sweepings and other loose household garbage.

All garbage must be placed at curbside before 7:30 a.m. on collection day but no earlier than

8:00 p.m. the day before. Do not place receptacles or other items on the road.

Residents are responsible for cleaning up any loose materials that have been scattered over the ground by animals, wind or vandalism.

#### Extra Item Disposal Options

Purchase Garbage Tags or Garbage Disposal Vouchers to dispose of extra garbage.

#### \$2 Garbage Tags

Garbage Tags for curbside collection are available for purchase at all City facilities. One Garbage Tag is good for an additional garbage bag or can.

#### Garbage Disposal Vouchers

Richmond residents may purchase a Garbage Disposal Voucher for \$5 at all City facilities. These vouchers are good for up to \$25 at the Vancouver Landfill, and are valid anytime. They are limited to one per household.

Visit [www.richmond.ca/recycle](http://www.richmond.ca/recycle) for a list of City facilities selling Garbage Tags and Garbage Disposal Vouchers.

#### Large Item Pick-Up Program

Residents in single-family homes, some townhomes and multi-family complexes with City garbage and/or Blue Box service, can arrange for curbside collection of four large household items each year. See page 39 for details.

#### Sign up for the Richmond Collection Schedule App

Get weekly collection reminders by downloading the free Richmond Collection Schedule app at the Apple or Android app stores to receive weekly reminders about curbside garbage and recycling collection, and to use the Recycling Wizard for tips on where to recycle.

The following items are **not** accepted in the garbage:

MATERIAL	HOW TO RECYCLE OR DISPOSE
<b>X DEMOLITION WASTE</b>	<ul style="list-style-type: none"> <li>Take to Ecowaste Industries at 15111 Triangle Road, or call the RCBC Recycling hotline at 604-RECYCLE (732-9253).</li> </ul>
<b>X DIRT, ROCK, CONCRETE OR BRICKS</b>	<ul style="list-style-type: none"> <li>Take to Ecowaste Industries. Visit <a href="http://ecowaste.com">ecowaste.com</a> or call 604-277-1410 for accepted items &amp; hours.</li> </ul>
<b>X DRYWALL</b> (Gypsum, sheetrock, plasterboard, gyproc & wallboard)	<ul style="list-style-type: none"> <li>Special restrictions apply. Please call the RCBC Recycling Hotline for details at 604-732-9253.</li> </ul>
<b>X HAZARDOUS WASTE</b>	<ul style="list-style-type: none"> <li>Call RCBC Recycling Hotline at 604-732-9253, visit <a href="http://www.metrovancouverrecycles.org">www.metrovancouverrecycles.org</a> or see page 46 - 52 for drop-off locations.</li> </ul>
<b>X MATERIALS THAT ARE TOO BIG OR MAY DAMAGE GARBAGE TRUCK</b>	<ul style="list-style-type: none"> <li>See Large Item Pick Up program on page 39 for disposal options.</li> </ul>
<b>X PROVINCIAL PRODUCT STEWARDSHIP COLLECTION (TAKE BACK) ITEMS</b>	<ul style="list-style-type: none"> <li>Visit <a href="http://bcstewards.com">bcstewards.com</a> or call 604-732-9253.</li> </ul>
<b>X RECYCLABLE MATERIALS</b> (Mixed paper, cardboard, plastic containers, empty aerosol cans, tin & aluminium cans, glass bottles & jars, and other materials accepted in the Blue Box/Blue Cart program)	<ul style="list-style-type: none"> <li>Recycle with the Blue Box or Blue Cart program.</li> <li>Remember to recycle glass separately using the Glass Recycling Bin/Cart.</li> <li>See pages 32 - 35 for details.</li> </ul>
<b>X YARD TRIMMINGS &amp; FOOD SCRAPS</b>	<ul style="list-style-type: none"> <li>Place in Green Carts or for yard trimmings only, paper yard waste bags.</li> <li>For yard trimmings only, one cubic yard or less may be dropped off at Recycling Depot. Unlimited amounts of yard trimmings can be dropped off at Ecowaste Industries with proof of residency.</li> <li>Check Green Cart section for restrictions and accepted materials on page 36.</li> </ul>

For a list of drop-off locations, use the City's Recycling Wizard available on the Richmond Collection Schedule app and at [www.richmond.ca/recyclesearch](http://www.richmond.ca/recyclesearch) or call the RCBC Recycling Hotline at 604-732-9253.



## COLLECTION SERVICE FOR LARGE HOUSEHOLD ITEMS

Richmond's Large Item Pick Up program provides a convenient collection service for up to four large household items per year, including mattresses, furniture and appliances. The program is available to residents in single-family homes, as well as townhomes and multi-family complexes with the City's garbage collection service and/or Blue Box program.

This program is designed to make it more convenient for residents to dispose of large household items and to help reduce illegal dumping. As well, through this program, large household items that can be recycled will be diverted from the landfill, which will help Richmond achieve its goal for 80% waste diversion from the landfill by 2020.

### STEPS ON HOW THE PROGRAM WORKS:

- 1** To schedule collection of up to four items per year, residents can contact the City's service provider, Sierra Waste Services at 604-270-4722 or schedule online at [www.richmond.ca/largeitem](http://www.richmond.ca/largeitem).
- 2** Sierra Waste Services will contact you to provide a pick up date and confirmation number.
- 3** On your scheduled pick up date only, place items at the curb or for multi-family complexes, in the area designated by the strata or property manager, before 7:30 a.m. or no earlier than 8:00 p.m. the night before.

**Safety Consideration:** If the large item is a freezer, refrigerator, icebox or other container that is equipped with a latch or locking device, the door/latch must be removed and placed beside the large item for safety reasons.



#### DID YOU KNOW?

Wet mattresses cannot be recycled and pose safety hazards for lifting. Please ensure the mattress stays dry and mould-free by covering it in a plastic bag. Reuse the bag from newly-purchased mattresses or purchase bags from home hardware and supply stores. Water-logged items that become too heavy may not be picked up.

### LIST OF ITEMS ACCEPTED



#### ACCEPTED

- ✓ Appliances (e.g. stove, dishwasher, washer and/or dryer, hot water tank, refrigerator, freezer, microwave, cooler)
- ✓ Barbecues (remove propane tank and/or lava rock briquettes)
- ✓ Bed frame
- ✓ Electric lawnmowers
- ✓ Furniture (e.g. couch, coffee table, chair, desk, dresser, TV stand, cabinet, drawer, table, hutch, crib, high chair, entertainment centre)
- ✓ Headboard
- ✓ Outdoor furniture (e.g. chairs, patio tables, patio umbrellas)
- ✓ Small household goods, which must be in boxes or bundled and are a reasonable size (one box or bundle is equal to one of the resident's four allotted items)
- ✓ Weight training equipment (e.g. treadmills, ellipticals, stationary bikes, stair masters, weight sets)
- ✓ Mattresses or boxsprings – please cover your mattress with a plastic bag.

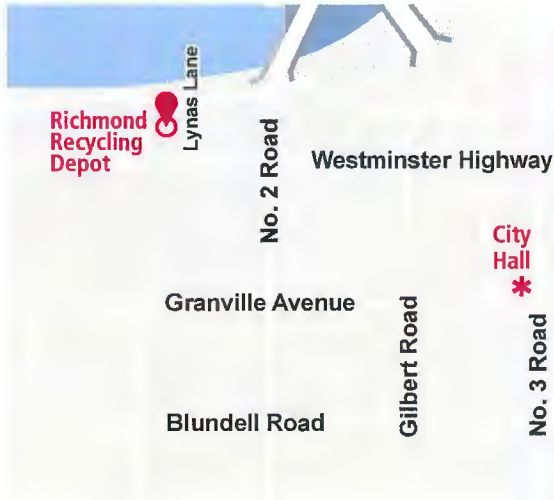
#### NOT ACCEPTED

- ✗ Car bodies or parts
- ✗ Carpets
- ✗ Construction materials
- ✗ Drywall
- ✗ Gas lawnmowers
- ✗ Hazardous waste
- ✗ Lumber, demolition or home renovation materials
- ✗ Propane tanks
- ✗ Tree stumps
- ✗ Tires

Note: Items that contain any hazardous liquids such as gas, oil, etc. will not be accepted.

See page 47 - 52 for disposal locations or call the RCBC Recycling Hotline at 604-732-9253.

Note: The item(s) must be able to be safely handled from the curbside in order to qualify for collection.



## RECYCLING DEPOT

The Richmond Recycling Depot is located at 5555 Lynas Lane and is open from Wednesday through Sunday from 9:00 a.m. to 6:15 p.m. The Depot accepts Styrofoam, batteries, cell phones, used cooking oil, large appliances, large metal items and yard trimmings, as well as recyclables normally placed curbside.

Residents are encouraged to use the curbside recyclables collection for glass bottles and jars, rigid plastic containers, newsprint and mixed paper. Businesses are encouraged to subscribe to onsite collection services if a large quantity of recyclables is produced. Residents and small business operators can drop off one cubic yard of recyclables and three large appliances at the Depot per day.

In addition, the Depot is a Product Stewardship (Take Back) Collection site for paint, solvents, flammable liquids, pesticides, lights, lighting fixtures and small appliances.

### FOR SALE AT THE RECYCLING DEPOT

Residents can purchase the following items:

- Compost bins - \$25 each + GST
- Rain barrels - \$30 each + GST
- Extra Garbage Tags - \$2 each
- Garbage Disposal Vouchers (cost is \$5 for Richmond residents and value is up to \$25 at the Vancouver Landfill)



### TIP FOR RESIDENTS

Residents can purchase compost bins from the Richmond Recycling Depot. To learn more about how to compost, see page 37, or visit the Compost Demonstration Garden located at 2631 Westminister Highway in the Terra Nova Rural Park.





## MATERIALS ACCEPTED AT THE RICHMOND RECYCLING DEPOT

Please note: All materials must be sorted into different containers at the Recycling Depot. Please visit [www.richmond.ca/depot](http://www.richmond.ca/depot) for drop-off details.

- |   |   |  |
|---|---|--|
| ✓ Aluminium materials (aluminium foil, pie plates)  | ✓ Flammable aerosols  | ✓ Newspaper  |
| ✓ Appliances (small and large electrical/battery operated appliances including dishwashers, washing machines, stoves, barbeques, ovens, microwaves, fridges, freezers, vacuums, hair dryers, toaster ovens, etc.) | ✓ Flammable liquids   | ✓ Paints (household paints)  |
| ✓ Batteries (small household batteries less than 5 kg)  | ✓ Flower pots (paper/plastic garden pots)   | ✓ Paint aerosols   |
| ✓ Books   | ✓ Gasoline (in approved ULC containers)   | ✓ Pesticides (domestic pesticides)   |
| ✓ Cell phones (including batteries)   | ✓ Glass bottles and jars (clear and coloured)   | ✓ Plastic containers   |
| ✓ Clean untreated wood  | ✓ Lights (fluorescent tubes, compact fluorescent lights, light emitting diodes, halogen and incandescent lights, high intensity discharge and other mercury containing lamps) | ✓ Plastic grocery shopping bags and plastic overwrap                             |
| ✓ Cooking oil and animal fat  | ✓ Lighting fixtures   | ✓ Sewing, knitting and textile machines  |
| ✓ Corrugated cardboard (flattened, clean corrugated boxes)  | ✓ Magazines   | ✓ Styrofoam packaging  |
| ✓ Exercise and hobby machines (treadmills, elliptical / cross trainers, cycling machines)   | ✓ Metal items (bike frames, clean 45 gallon drums, clean automotive parts, lawn chairs, steel coat hangers, steel or lead piping)   | ✓ Tin cans   |
|   | ✓ Paper (mixed paper products including flattened boxboards, envelopes, junk mail, flyers, inserts, office paper, paper egg cartons, telephone books, etc.)                   | ✓ Tools (power tools such as angle saws, jigsaws, trimmers, drum machines, etc.) |
|   |   | ✓ Yard and garden trimmings  |



## TIP FOR RESIDENTS

You can find drop-off locations and how to recycle a variety of household items using the Recycling Wizard on the free Richmond Collection Schedule App (available at the Apple and Android app stores). Plus, the app sends you weekly collection day reminders!

The Recycling Wizard is also available online at [www.richmond.ca/recyclesearch](http://www.richmond.ca/recyclesearch).

## COMMUNITY RESOURCES AND PARTNERS

### METRO VANCOUVER RECYCLES — REUSE AND RECYCLE IN THE REGION

A convenient web tool called Metro Vancouver Recycles makes it easy to connect with people who could use products you don't need, or to find options for recycling products that cannot be included in your curbside collection, visit [metrovancoverrecycles.org](http://metrovancoverrecycles.org).

There are also convenient links to online services if you want to sell or give away goods. The following are just a few examples in the Metro Vancouver region:

**Metro Vancouver Recycling Directory**  
[metrovancoverrecycles.org](http://metrovancoverrecycles.org)

**MetroVan Reuses**  
[bc.reuses.com](http://bc.reuses.com)

**Richmond Shares**  
[richmondshares.bc.ca](http://richmondshares.bc.ca)

**Recycle BC**  
[recyclebc.ca](http://recyclebc.ca)

### RCBC COMMUNITY RESOURCES

**Recycling Hotline**  
Monday to Friday, 9 a.m. to 4 p.m.  
Phone: 604-RECYCLE (604-732-9253)  
Email: [hotline@rcbc.bc.ca](mailto:hotline@rcbc.bc.ca)  
RCBC Recyclepedia at [rcbc.bc.ca/recyclepedia](http://rcbc.bc.ca/recyclepedia)  
Smart Phone App: BC Recyclepedia App  
(available at iPhone App Store and Android Market)

### DID YOU KNOW?

Four, 2-litre plastic bottles can be recycled into one t-shirt, filling for a ski jacket and two ball caps.





## PRODUCT STEWARDSHIP PROGRAMS

The City of Richmond works with local companies and organizations like Product Care and Encorp to support BC's Product Stewardship Programs.

These programs are often called take back programs or Extended Producer Responsibility (EPR) programs, and they are based on the principle that whoever designs, produces, sells or uses a product is also responsible for minimizing that product's environmental impact. The key participants in these programs are the BC government, local governments, producers, retailers and consumers who bring their products to designated collection sites when they are at their end of life. The cost of these programs is covered by consumers and producers, sometimes in the form of a deposit or levy that is charged at the time of purchase. In the case of beverage containers, there are refunds available when they are returned at a collection site.

Take back programs are important as they expand the opportunities for recycling beyond the curbside collection services. There are many household items that can be recycled through businesses and organizations in the community who participate in BC's Product Stewardship Program. Many of these items are also considered hazardous waste, and they are restricted from garbage as they are not accepted at the landfill. The take back programs help to ensure that these expired or end-of-life products will be disposed of safely, and recycled where possible.



## PRODUCT STEWARDSHIP PROGRAM CATEGORIES

The following categories highlight the products that can be returned to retailers and other community partners. For a list of drop-off locations for each category, please see pages 47 to 52.

TAKE BACK PROGRAMS	WHAT IS INCLUDED	STEWARDSHIP AGENCY
<b>BATTERIES</b>	Household batteries	Call2Recycle <b>Contact</b> <a href="http://call2recycle.ca">call2recycle.ca</a> 1-888-224-9764 <a href="mailto:info@call2recycle.ca">info@call2recycle.ca</a> Drop off site locator 1-877-273-2925
<b>BEVERAGE CONTAINERS</b>	Almost all types of beverage containers	Encorp Pacific (Canada) <b>Contact</b> <a href="http://return-it.ca/locations">return-it.ca/locations</a> 1-800-330-9767 or 604-473-2400 <a href="mailto:returnit@returnnit.ca">returnit@returnnit.ca</a> Note: Beverage containers like pop and juice cans and bottles can be recycled with the Blue Box or Blue Cart or can be dropped off at Richmond's Recycling Depot as part of the City's recycling services. Beverage containers can also be returned for a refund on the deposit at a number of Return-It Depot locations in Richmond.
<b>CELL PHONES</b>	Mobile/wireless devices that connect to a cellular or paging network, including all cell phones, smart phones, wireless personal digital assistants (PDAs), external air cards and pagers, as well as cell phone batteries and accessories, including headsets and chargers	Canadian Wireless Telecommunications Association <b>Contact</b> <a href="http://RecycleMyCell.ca">RecycleMyCell.ca</a> 1-888-797-1740 <a href="mailto:info@recyclemycell.ca">info@recyclemycell.ca</a>
<b>ELECTRONICS</b>	Televisions and computer and printer products such as desktop computers, display devices, portable (laptop) computers, desktop printers and fax machines and computer accessories like keyboards, pointing devices, track balls and mice	Encorp Pacific (Canada) <b>Contact</b> <a href="http://return-it.ca/electronics">return-it.ca/electronics</a> 1-800-330-9767 or 604-473-2400 <a href="mailto:returnit@returnnit.ca">returnit@returnnit.ca</a>
<b>MEDICATION</b>	All expired or leftover prescription medication, non-prescription medication and mineral supplements, anti-fungal and anti-bacterial creams	Health Products Stewardship Association <b>Contact</b> <a href="http://healthsteward.ca/returns/british-columbia">healthsteward.ca/returns/british-columbia</a> 613-723-7282 or 1-844-535-8889 <a href="mailto:info@healthsteward.ca">info@healthsteward.ca</a>

### DID YOU KNOW?

100% of brewer packaging is either reusable or recyclable, and in addition to standard beer cans and bottles, brewers reuse or recycle their aluminium kegs and their secondary packaging including plastic shrink wrap, cardboard and wooden pallets.



**DID YOU KNOW?**

A littered aluminum can takes 500 years to disintegrate, but it only takes six weeks to be manufactured, filled, sold, recycled, remanufactured, refilled and be back out on the marketplace.

TAKE BACK PROGRAMS	WHAT IS INCLUDED	STEWARDSHIP AGENCY
<b>PACKAGING AND PRINTED PAPER</b>	Aerosol cans, microwavable bowls/cups/lids, paper food containers & cartons, plastic & paper drink cups with lids, plastic containers/jars/tubs/trays, aluminium cans, tin cans, etc. Visit <a href="http://recyclinginbc.ca">recyclinginbc.ca</a> for a complete list	RecycleBC <b>Contact</b> <a href="http://recyclebc.ca">recyclebc.ca</a> 778-588-9504 or 1-855-875-3596 <a href="mailto:info@recyclebc.ca">info@recyclebc.ca</a>
<b>PAINTS, SOLVENTS, PESTICIDES AND GASOLINE</b>	Paints, solvents, pesticides and gasoline	Product Care Association <b>Contact</b> <a href="http://regeneration.ca">regeneration.ca</a> 1-877-592-2972 <a href="mailto:contact@productcare.org">contact@productcare.org</a>
<b>SMALL APPLIANCES AND POWER TOOLS</b>	Kitchen countertop appliances (e.g. toasters, microwaves, coffee makers and food processors), electric bathroom scales, hair dryers, carpet cleaners, vacuum cleaners, portable fans, power tools, sewing and exercise machines	ElectroRecycle is a non-profit, province-wide, small electrical appliance recycling program in B.C. and the first of its kind in Canada through the Canadian Electrical Stewardship Association (CESA) with the help of BC's Product Care Association <b>Contact</b> <a href="http://electrorecycle.ca">electrorecycle.ca</a> 1-877-670-2372 <a href="mailto:info@cesarecycling.ca">info@cesarecycling.ca</a>
<b>TIRES</b>	Car tires, truck tires and some agricultural and logger/skidder tires	Tire Stewardship BC (TSBC) <b>Contact</b> <a href="http://tsbc.ca">tsbc.ca</a> 1-866-759-0488
<b>THERMOSTATS</b>	Mercury-containing and electronic thermostats	Heating, Refrigeration and Air Conditioning Institute of Canada in partnership with the Canadian Institute of Plumbing and Heating, and delivered by Summerhill Impact. <b>Contact</b> <a href="http://switchthestat.ca">switchthestat.ca</a> 416-922-2448 (ext 232) <a href="mailto:jcourt@summerhillgroup.ca">jcourt@summerhillgroup.ca</a>
<b>USED OIL AND ANTIFREEZE</b>	Motor oil, oil filters, empty oil containers, antifreeze and used antifreeze containers	BC Used Oil Management Association <b>Contact</b> <a href="http://usedoilrecycling.com/en/bc">usedoilrecycling.com/en/bc</a> 1-866-254-0555 <a href="mailto:reception@usedoilrecycling.ca">reception@usedoilrecycling.ca</a>

## HAZARDOUS WASTE AND OTHER DISPOSAL ITEMS

The careless handling of hazardous products can cause serious injury as well as damage to the environment. Hazardous products that are dumped in sewers or green spaces can injure livestock, wildlife and plant life. Careful and often specialized disposal is essential for these materials.

There are certain materials that Metro Vancouver disposal facilities do not accept, either because there are already disposal programs set up for these items, or because they are hazardous to waste collection workers, the public and the environment.

At disposal sites, garbage loads are inspected for banned and prohibited materials. Loads that arrive at the disposal sites containing prohibited materials are assessed a \$65 minimum surcharge, plus the cost of removal, clean-up or remediation. Loads containing banned materials are assessed a 50% tipping fee surcharge.

Many common hazardous household and automotive products must be recycled or disposed through special depots. Disposal sites and take back collection options for hazardous and banned materials are listed on the following pages. Please note that this information is provided as a reference for your convenience; however, it is not guaranteed. Please call first to confirm that the site is still open to accept these take back products and to check hours of operation.

For a list of drop-off locations, use the City's Recycling Wizard available on the Richmond Collection Schedule app and at [www.richmond.ca/recyclesearch](http://www.richmond.ca/recyclesearch), or call the RCBC Recycling Hotline at 604-732-9253.

### BANNED AND HAZARDOUS MATERIALS

BANNED HAZARDOUS AND OPERATIONAL IMPACT MATERIALS	BANNED MATERIALS THAT CAN BE RECYCLED WITH CITY SERVICES	BANNED PRODUCT STEWARDSHIP MATERIALS
<ul style="list-style-type: none"> <li>x Agricultural waste</li> <li>x Asbestos</li> <li>x Automobile parts and bodies</li> <li>x Barrels, drums, pails or other large (205 litre or greater) liquid containers, whether full or empty</li> <li>x Biomedical waste</li> <li>x Dead animals</li> <li>x Gypsum</li> <li>x Hazardous waste</li> <li>x Inert fill material including soil, sod, gravel, concrete and asphalt exceeding 0.5 cubic metres per load</li> <li>x Liquids or sludge</li> <li>x Mattresses</li> <li>x Propane tanks</li> <li>x Refuse that is on fire, smoldering, flammable or explosive</li> <li>x Wire and cable exceeding 1% of load</li> </ul>	<ul style="list-style-type: none"> <li>x Beverage containers</li> <li>x Clean wood</li> <li>x Containers made of glass, metal or banned recycled plastic </li> <li>x Corrugated cardboard</li> <li>x Food waste</li> <li>x Green waste</li> <li>x Recyclable paper</li> </ul>	<ul style="list-style-type: none"> <li>x Antifreeze and antifreeze containers</li> <li>x Batteries</li> <li>x Electronics and electrical products, including metal household and commercial appliances</li> <li>x Fluorescent lights</li> <li>x Gasoline</li> <li>x Lead-acid batteries</li> <li>x Oil, oil filters and oil containers</li> <li>x Packaging and printed paper</li> <li>x Paint</li> <li>x Pesticides</li> <li>x Pharmaceutical products and medications</li> <li>x Solvents and flammable liquids</li> <li>x Thermostats</li> <li>x Tires</li> </ul>
For a complete list of banned materials, please visit <a href="http://www.metrovancouver.org/services/solid-waste/bylaws-regulations/banned-materials">www.metrovancouver.org/services/solid-waste/bylaws-regulations/banned-materials</a>		





### TIP FOR RESIDENTS

To spot hazardous waste, look for the words Danger, Warning, or Caution on the product label, and any of the symbols shown above.



### ANTIFREEZE AND EMPTY CONTAINERS<sup>DB</sup>

DROP-OFF LOCATION	ADDRESS	PHONE
Richmond Audi	5680 Parkwood Way	604-279-9663
Certigard Petro-Canada	4011 Francis Road	604-241-1101
Cowell Motors Ltd. - Volkswagen	13611 Smallwood Place	604-273-3922
Jaguar Land Rover Richmond	5660 Parkwood Way	604-273-6068
Jiffy Lube	10991 No. 4 Road	604-448-0142
Metron Auto Service Ltd.	104 - 8077 Alexandra Road	604-270-1668
Mr. Lube	9120 Westminster Highway	604-273-5823
Rainbow Auto Service	142 - 11788 River Road	604-276-2820

For a complete list of antifreeze or containers accepted, visit <http://usedoilrecycling.com/en/bc> or call 604-732-9253.

### APPLIANCES - SMALL<sup>DB</sup>

DROP-OFF LOCATION	ADDRESS	PHONE
City's Recycling Depot	5555 Lynas Lane	604-276-4010
Ironwood Bottle & Return-It Depot	110 - 11020 Horseshoe Way	604-275-0585
OK Bottle Depot	7960 River Road	604-244-0008
Regional Recycling	13300 Vulcan Way	1-855-701-7171
Richmond Return-It Depot	135 - 8171 Westminster Hwy	604-232-5555

For a complete list of small appliances accepted, visit [electrorecycle.ca](http://electrorecycle.ca) or call 604-732-9253.

### AUTOMOTIVE BATTERIES<sup>DB</sup>

DROP-OFF LOCATION	ADDRESS	PHONE
Kal Tire	2633 No. 5 Road	604-278-9181
Regional Recycling *	13300 Vulcan Way	1-855-701-7171
Sota Battery Canada	11871 Horseshoe Way	604-271-9727

Note: All retail locations accept a used car battery for each new one purchased. For a list of collection sites, please visit [www.recyclemybattery.ca](http://www.recyclemybattery.ca).

### DAY CAR SEATS

DROP-OFF LOCATION	ADDRESS	PHONE
City of Vancouver Landfill *	5400 72nd Street, Delta	604-873-7000

DB: Disposal ban | \* A fee is charged

Please note: Drop-off locations may change without notice. Please call individual locations to confirm address and hours of operation.

**BATTERIES AND MOBILE PHONES <sup>DB</sup>**

Batteries weighing five kilograms or less.

DROP-OFF LOCATION	ADDRESS	PHONE
Best Buy	700-5300 No. 3 Road	604-273-7335
City's Recycling Depot	5555 Lynas Lane	604-276-4010
Dr Battery	102 - 4460 Jacombs Road	604-273-8248
Home Depot	2700 Sweden Way	604-303-9882
London Drugs	5971 No. 3 Road	604-448-4811
	3200 - 11666 Steveston Highway	604-448-4852
Pharmasave	116 - 10151 No. 3 Road	604-241-2898
Rona	7111 Elmbridge Way	604-273-4606
Staples	8171 Ackroyd Road	604-270-9599
	110 - 2780 Sweden Way	604-303-7850

For a complete list of batteries accepted, please visit [call2recycle.ca](http://call2recycle.ca) or call 1-888-224-9764.

For a complete list of mobile phones drop off locations, visit [call2recycle.ca/locator](http://call2recycle.ca/locator).

All cellular/mobile phone stores accept used cellular/mobile phones for refurbishing or recycling.

To erase information from your device, including text messages, contacts and personal files, use Cell Phone Data Erasers by [recyclemycell.ca/recycling-your-device](http://recyclemycell.ca/recycling-your-device) available for free.

**CARBON MONOXIDE (CO), SMOKE AND COMBINATION SMOKE AND CO ALARMS <sup>DB</sup>**

DROP-OFF LOCATION	ADDRESS	PHONE
London Drugs (smoke detectors only)	5971 No. 3 Road	604-448-4811
	3200 - 11666 Steveston Highway	604-448-4852
Regional Recycling	13300 Vulcan Way	1-855-701-7171

For a complete list of alarms accepted, please visit [regeneration.ca](http://regeneration.ca) or call 604-732-9253.

**ELECTRONICS: AUDIO VISUAL EQUIPMENT, COMPUTERS, MONITORS, TVs, PRINTERS, FAX MACHINES, SCANNERS, VIDEO GAMES & ACCESSORIES**

DROP-OFF LOCATION	ADDRESS	PHONE
Best Buy	700 - 5300 No. 3 Road	604-273-7335
Ironwood Bottle & Return-It Depot	110 - 11020 Horseshoe Way	604-275-0585
OK Bottle Depot	7960 River Road	604-244-0008
Regional Recycling	13300 Vulcan Way	1-855-701-7171
Staples	8171 Ackroyd Road	604-270-9599
	110 - 2780 Sweden Way	604-303-7850

For a complete list of materials accepted, please visit [return-it.ca/electronics](http://return-it.ca/electronics) or call 604-473-2400.

**EXERCISE & HOBBY MACHINES <sup>DB</sup>**

DROP-OFF LOCATION	ADDRESS	PHONE
City's Recycling Depot	5555 Lynas Lane	604-276-4010
Ironwood Bottle & Return-It Depot	110 - 11020 Horseshoe Way	604-275-0585
OK Bottle Depot	7960 River Road	604-244-0008
Regional Recycling	13300 Vulcan Way	1-855-701-7171
Richmond Return-It Depot	135-8171 Westminster Hwy	604-232-5555

**EYEGLASSES**

DROP-OFF LOCATION	ADDRESS	PHONE
Drop off at a local optometrist or eye care professional.		

**FIRE EXTINGUISHERS**

DROP-OFF LOCATION	ADDRESS	PHONE
Vancouver Fire*	22131 Fraserwood Way	604-232-3473

DB: Disposal ban | \* A fee is charged

Please note: Drop-off locations may change without notice. Please call individual locations to confirm address and hours of operation.



**DID YOU KNOW?**

The Product Stewardship Program helps with take back of many recyclable materials and is guided by the principle that whoever designs, produces, sells or uses a product takes responsibility for minimizing that product's environmental impact. The costs for

recycling these products are covered through environmental handling fees that are charged on the sale of products and through refundable deposits on items like beverage containers.


**FLAMMABLE LIQUIDS<sup>DB</sup>, PESTICIDES<sup>DB</sup>,  
SOLVENTS<sup>DB</sup>, GASOLINE<sup>DB</sup>**

(Gasoline must be in approved ULC container)

DROP-OFF LOCATION	ADDRESS	PHONE
City's Recycling Depot	5555 Lynas Lane	604-276-4010
Regional Recycling	13300 Vulcan Way	1-855-701-7171

For a complete list of flammable liquids, gasoline, pesticides and solvents accepted, please visit [regeneration.ca](http://regeneration.ca) or call 604-732-9253.

**GENERAL HAZARDOUS MATERIALS**

DROP-OFF LOCATION	ADDRESS	PHONE
Tervita*	160 - 13511 Vulcan Way	604-214-7000
Terrapure Environmental*	9 - 7483 Progress Way, Delta	604-952-1220

**GYPSUM DRYWALL<sup>DB</sup>**

No other materials attached to or on drywall

DROP-OFF LOCATION	ADDRESS	PHONE
City of Vancouver Landfill *	5400 72nd Street, Delta	604-873-7000
Ecowaste Industries Ltd. *	15111 Triangle Road	604-277-1410
New West Gypsum Recycling *	38 Vulcan Street, New Westminster	604-534-9925
Vancouver Transfer Station (Maximum 1/2 sheet with a paid load of garbage)	377 W. Kent Avenue N.	604-326-4600

**HYPODERMIC NEEDLES**

Purchase a "Sharps Container" from a pharmacy and return the container to same pharmacy when full.


**LIGHTS & LIGHTING FIXTURES<sup>DB</sup>**

DROP-OFF LOCATION	ADDRESS	PHONE
City's Recycling Depot	5555 Lynas Lane	604-276-4010
London Drugs	5971 No. 3 Road	604-448-4811
	3200 - 11666 Steveston Highway	604-448-4852
Rona	7111 Elmbidge Way	604-273-4606

For a complete list of lighting products accepted, please visit [regeneration.ca](http://regeneration.ca) or call 604-732-9253.

**LUBRICATING (USED) OIL<sup>DB</sup>, OIL FILTERS<sup>DB</sup>,  
PLASTIC OIL CONTAINERS<sup>DB</sup>**

DROP-OFF LOCATION	ADDRESS	PHONE
Audi of Richmond	5680 Parkwood Way	604-279-9663
Cowell Motors Ltd - Volkswagen	13611 Smallwood Place	604-273-3922
Esso Service Station (Blundell)	7991 No. 1 Road	604-277-1105
Jaguar Land Rover of Richmond	5660 Parkwood Way	604-273-6068
Jiffy Lube	10991 No. 4 Road	604-448-0142
Metron Auto Service Ltd.	104 - 8077 Alexandra Road	604-270-1668
Mr. Lube	9120 Westminster Highway	604-273-5823
Sky Auto Services	110 - 5791 Minoru Boulevard	604-233-1828

For a complete list of lubricating oil, oil filters and plastic oil containers accepted, visit [usedoilrecycling.com](http://usedoilrecycling.com) or call 604-732-9253.

DB: Disposal ban | \* A fee is charged

Please note: Drop-off locations may change without notice. Please call individual locations to confirm address and hours of operation.

Working together with the City of Richmond, producers, retailers and residents can divert hazardous waste and other special disposal items from the landfill. Producers and retailers who support product stewardship and related take back programs assist with recycling and proper disposal, and residents can use these programs to help turn waste into resources.




**MATRESSES AND BOXSPRINGS™**

DROP-OFF LOCATION	ADDRESS	PHONE
Canadian Mattress Recycling*	1210 Cliveden Avenue, Delta	604-777-0324
City of Vancouver Landfill*	5400 72nd Street, Delta	604-873-7000
MattressRecycling.ca*	11571 Twigg Place	604-324-3211

Richmond's Large Item Pick Up Program: Contact Sierra Waste at 604-270-4722. Please note some restrictions apply. Visit [www.richmond.ca/largeitem](http://www.richmond.ca/largeitem) for program details.

**MEDICAL DEVICES & EQUIPMENT<sup>DB</sup>**

DROP-OFF LOCATION	ADDRESS	PHONE
Best Buy	700 - 5300 No. 3 Road	604-273-7335
Ironwood Bottle & Return-It Depot	110 - 11020 Horseshoe Way	604-275-0585
OK Bottle Depot	7960 River Road	604-244-0008
Regional Recycling	13300 Vulcan Way	1-855-701-7171
Staples	8171 Ackroyd Road	604-270-9599
	110 - 2780 Sweden Way	604-303-7850



**MUSICAL INSTRUMENTS<sup>DB</sup>**

DROP-OFF LOCATION	ADDRESS	PHONE
Ironwood Bottle & Return-It Depot	110 - 11020 Horseshoe Way	604-275-0585
OK Bottle Depot (electrical instruments only)	7960 River Road	604-244-0008
Regional Recycling	13300 Vulcan Way	1-855-701-7171
Staples (electrical instruments only)	8171 Ackroyd Road	604-270-9599
	110 - 2780 Sweden Way	604-303-7850

**PAINT & PAINT AEROSOL CONTAINERS™**

DROP-OFF LOCATION	ADDRESS	PHONE
City's Recycling Depot	5555 Lynas Lane	604-276-4010
Regional Recycling	13300 Vulcan Way	1-855-701-7171
Rona	7111 Elmbridge Way	604-273-4606

For a complete list of paint & paint aerosol containers accepted, please visit [regeneration.ca](http://regeneration.ca) or call 604-732-9253.

DB: Disposal ban | \* A fee is charged

Please note: Drop-off locations may change without notice. Please call individual locations to confirm address and hours of operation.



**PHARMACEUTICAL DB**

All pharmacies accept left over or outdated prescription drugs, non-prescription medications, herbal products, mineral supplements, vitamin supplements and throat lozenges for safe disposal.

For a list of pharmacies and/or drugs, medications, herbal products and mineral supplements accepted, visit [healthsteward.ca/returns/british-columbia](http://healthsteward.ca/returns/british-columbia) or call 604-732-9253.

Note: Please do not wash these items down the drain or throw them in the garbage.

**PROPANE TANKS - REFILLABLE (EMPTY)**

DROP-OFF LOCATION	ADDRESS	PHONE
City of Vancouver Landfill*	5400 72nd Street, Delta	604-873-7000
Husky Gas Stations*	8011 No. 3 Road	604-270-3822
	9060 Bridgeport Road	604-278-0011

**PROPANE TANKS (SMALL) - DISPOSABLE (EMPTY)**

DROP-OFF LOCATION	ADDRESS	PHONE
City of Vancouver Landfill	5400 72nd Street, Delta	604-873-7000
Husky Gas Stations*	8011 No. 3 Road	604-270-3822
	9060 Bridgeport Road	604-278-0011

**OUTDOOR POWER EQUIPMENT DB**

DROP-OFF LOCATION	ADDRESS	PHONE
City's Recycling Depot	5555 Lynas Lane	604-276-4010
Regional Recycling	13300 Vulcan Way	1-855-701-7171

**SEWING, KNITTING & TEXTILE MACHINES DB**

DROP-OFF LOCATION	ADDRESS	PHONE
City's Recycling Depot	5555 Lynas Lane	604-276-4010
Ironwood Bottle & Return-It Depot	110 - 11020 Horseshoe Way	604-275-0585
OK Bottle Depot	7960 River Road	604-244-0008
Regional Recycling	13300 Vulcan Way	1-855-701-7171
Richmond Return-It Depot	135 - 8171 Westminster Hwy	604-232-5555

**STYROFOAM - MOLDED PACKAGING & FOOD CONTAINERS**

DROP-OFF LOCATION	ADDRESS	PHONE
City's Recycling Depot	5555 Lynas Lane	604-276-4010

London Drugs customers can return the moulded packaging Styrofoam from their appliance, computer and accessories products to any London Drugs store with proof of purchase.

**STYROFOAM CHIPS (PEANUTS)**

DROP-OFF LOCATION	ADDRESS	PHONE
The UPS Store	185 - 9040 Blundell Road	604-231-9643
	3080 - 11666 Steveston Hwy	604-271-1501
	130 - 8191 Westminster Hwy	604-279-0988
Packaging Depot	6360 Kingsway, Burnaby	604-451-1206
	5524 Cambie Street, Vancouver	604-325-9966
Westcoast Plastic Recycling Inc*	215 - 7080 River Road	604-247-1664

**TELUS EQUIPMENT (RENTAL OR RETAIL) DB**

All TELUS rental or retail equipment such as cordless/corded phones, Voice Over IP (VOIP) phones, Global Positioning System (GPS) equipment and video/telephone conference equipment can be returned via Canada Post, call 604-310-2255 for more information.

DB: Disposal ban | \* A fee is charged

Please note: Drop-off locations may change without notice. Please call individual locations to confirm address and hours of operation.

**DID YOU KNOW?**

Recycled tires are used in products such as athletic tracks, playground safety surfaces, synthetic turf fields and roofing products.

**THERMOSTATS<sup>DB</sup>**

DROP-OFF LOCATION	ADDRESS	PHONE
Andrew Sheret Ltd.	4500 Vanguard Road	604-278-3766

For more information, call 1-800-267-2231 ext. 224..

**TIRES<sup>DB</sup>**

DROP-OFF LOCATION	ADDRESS	PHONE
Chariot Tire Ltd.	404 - 5940 No. 6 Road	604-276-2966
Island City Automotive	180 - 5400 Minoru Blvd	604-273-4023
Canadian Tire	3500 No. 3 Road	604-273-2939
	11388 Steveston Highway	604-271-6651
Express Lube & Tune Centre	2840 No. 3 Road	604-278-1018
Kal Tire	2633 No. 5 Road	604-278-9181
Metro Tires Ltd.	13320 Mitchell Road	604-321-9004
Midas Auto & Tire Service	4660 No. 3 Road	604-273-9664
OK Tire Store	5831 Minoru Boulevard	604-278-5171
Redline Automotive Ltd.	1 - 11711 No. 5 Road	604-277-4269
Roadrunners Dial A Tire Ltd.	125 - 11780 River Road	604-274-8473
Signature Mazda	13800 Smallwood Place	604-278-3185
Vancouver Landfill (Passenger/light truck, with/ without rims limit of 10)	5400 72nd Street, Delta	604-873-7000

Note: All retail locations accept a used tire for a new one purchased.

For a complete list of tires accepted, visit [tsbc.ca](http://tsbc.ca) or call 1-866-759-0488.

**BICYCLE TIRES, TUBES, HELMETS, LOCKS AND WORKING BIKES**

DROP-OFF LOCATION	ADDRESS	PHONE
Village Bikes	3891 Moncton Street	604-274-3865

For more information, visit [tsbc.ca/bike.php](http://tsbc.ca/bike.php) or call 1-866-759-0488.

**TOOLS - POWER (ELECTRONIC & ELECTRICAL)<sup>DB</sup>**

DROP-OFF LOCATION	ADDRESS	PHONE
City's Recycling Depot	5555 Lynas Lane	604-276-4010
Ironwood Bottle & Return-It Depot	110 - 11020 Horseshoe Way	604-275-0585
OK Bottle Depot	7960 River Road	604-244-0008
Regional Recycling	13300 Vulcan Way	1-855-701-7171
Richmond Return-It Depot	135 - 8171 Westminster Hwy	604-232-5555

**TOYS (ELECTRONIC & ELECTRICAL) INCLUDING VIDEO GAMING SYSTEMS & ACCESSORIES<sup>DB</sup>**

DROP-OFF LOCATION	ADDRESS	PHONE
Best Buy	700 - 5300 No. 3 Road	604-273-7335
Ironwood Bottle & Return-It Depot	110 - 11020 Horseshoe Way	604-275-0585
OK Bottle Depot	7960 River Road	604-244-0008
Regional Recycling	13300 Vulcan Way	1-855-701-7171

**UPHOLSTERED FURNITURE (COUCHES, ARMCHAIRS, ETC)**

DROP-OFF LOCATION	ADDRESS	PHONE
Canadian Mattress Recycling*	1210 Cliveden Avenue, Delta	604-777-0324
City of Vancouver Landfill*	5400 72nd Street, Delta	604-873-7000
MattressRecycling.ca*	11571 Twigg Place	604-324-3211

Richmond's Large Item Pick Up Program: Contact Sierra Waste at 604-270-4722. Please note some restrictions apply. Visit [www.richmond.ca/largeitem](http://www.richmond.ca/largeitem) for program details.

DB: Disposal ban | \* A fee is charged

Please note: Drop-off locations may change without notice. Please call individual locations to confirm address and hours of operation.





**CITY OF RICHMOND**

Environmental Programs Information Line:

604-276-4010

[www.richmond.ca/recycle](http://www.richmond.ca/recycle)

 Printed on recycled paper.