



City of Richmond

Report to Committee

To: Parks, Recreation and Cultural Services Committee
From: Marie Fenwick
Director, Arts, Culture and Heritage Services
Date: November 10, 2022
File: 11-7000-09-20-334/Vol 01
Re: **Steveston Community Centre and Library Public Art Plan**

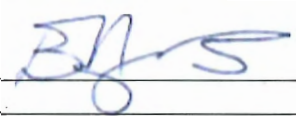


Staff Recommendation

That the Steveston Community Centre and Library Public Art Plan, as outlined in the report titled "Steveston Community Centre and Library Public Art Plan," dated November 10, 2022, from the Director, Arts, Culture and Heritage Services, be endorsed as the guiding plan for public art opportunities at the Steveston Community Centre and Library.

CM Fenwick
Marie Fenwick

Director, Arts, Culture and Heritage Services
(604-276-4288)

Att. 1

REPORT CONCURRENCE		
ROUTED TO:	CONCURRENCE	CONCURRENCE OF GENERAL MANAGER
Finance Department	<input checked="" type="checkbox"/>	
Parks Services	<input checked="" type="checkbox"/>	
Recreation and Sport Services	<input checked="" type="checkbox"/>	
Facility Services & Project Development	<input checked="" type="checkbox"/>	
Library	<input checked="" type="checkbox"/>	
SENIOR STAFF REPORT REVIEW	INITIALS: 	APPROVED BY CAO 

Staff Report

Origin

On July 26, 2021, Council approved the concept design and capital budget for the Steveston Community Centre and Library. The new facility will serve the community into the future by supporting the physical, wellness, life-long learning, and creative needs of those who live, work and play in Richmond.

In accordance with the Public Art Program Policy No. 8703, the project budget includes an allocation of one per cent of the construction budget for public art. The one per cent public art contribution for this project is \$450,000.

This report presents the guiding plan for public art opportunities at Steveston Community Centre and Library for Council consideration and recommendations for implementation.

This report supports Council's Strategic Plan 2018-2022 Strategy #3 One Community Together:

Vibrant and diverse arts and cultural activities and opportunities for community engagement and connection.

3.1 Foster community resiliency, neighbourhood identity, sense of belonging, and intercultural harmony.

3.2 Enhance arts and cultural programs and activities.

Analysis

Steveston Community Centre and Library Public Art Plan Vision

The intention of the Steveston Community Centre and Library Public Art Plan (the Plan), is to guide and inform the provision of art in public locations, to reflect and enhance the unique services and programs offered at the facility (Attachment 1).

The Steveston Community Centre and Library is envisioned to be the heart of the Steveston community, where residents will come to recreate, learn, play and connect in a welcoming and accessible environment. With the goal to serve the community into the future, the new 60,350 square foot, three-storey facility will include two gymnasiums, a fitness centre, community "living room", library and study areas, as well as several multipurpose rooms for community use.

Public Art Opportunities

Staff worked with members of the Steveston Community Society and Richmond Public Library Board to inform the recommended public art opportunities identified in the Plan. The members are:

- Emily De Boer, member, Steveston Community Society;
- Alan Sakai, member, Steveston Community Society; and
- Sherine Merhi, Richmond Public Library Board.

The members of the Steveston Community Society and Richmond Public Library Board met on June 21, July 12 and November 8, 2022, to discuss the public art opportunities, approach, themes and potential locations. The resulting Plan reflects the collective perspective of the community members.

Artists will be encouraged to explore any of the following four themes for the Steveston Community Centre and Library while ensuring room for artistic expression, enjoyment, play, colour and interactivity:

1. Indigenous Culture;
2. Steveston Fishing Industry;
3. Japanese Canadian History; and
4. Fraser River and Local Ecology.

After considering a wide range of public art opportunities, it is proposed that the Plan include a large-scale signature artwork located in the outdoor plaza as well as additional artworks for the interior of the facility.

A summary of the art opportunities within the allocated budgets are presented in Table 1 below.

Table 1: Summary of Public Art Opportunities

Opportunity	Description	Artist Selection Process	TOR to Council Date	Completion Date	Budget
Signature Outdoor Artwork	A landmark, signature artwork on the outdoor plaza to create a sense of place and arrival. The artwork may be a single stand-alone artwork, or series of sequential pieces.	2-Stage Selection Process	Q1 2023	In tandem with building completion	\$250,000
Integrated Interior Artwork	Integrated artwork within the interior of Steveston Community Centre and Library. The artwork could include surface treatments for floor and/or glazing and/or furniture design.	2-Stage Selection Process	Q1 2023	In tandem with building completion	\$100,000

Opportunity	Description	Artist Selection Process	TOR to Council Date	Completion Date	Budget
Installed Interior Artwork(s) (community-engaged)	Artwork(s) to be installed inside the Steveston Community Centre and Library after the facility is complete. The artwork(s) would be created through a community-engaged process with the participation of local residents.	1 and/or 2-Stage Selection Process	TBD	TBD	\$70,000
Total for all artworks					\$420,000
Project Administration (such as artist selection)					\$30,000
TOTAL project budget					\$450,000

Selection Process for Artists and Artworks

Staff, in consultation with the Richmond Public Art Advisory Committee will organize an open artist selection process for each public art opportunity. The selection criteria will be detailed in the Request for Qualifications or Proposals (RFQ, RFP) and will be in accordance with the Public Art Program guidelines. A typical set of criteria may include the following:

- artist qualifications and proven capability to produce work of the highest quality;
- artist's capacity to work in demanding environments with communities and other design professionals, where applicable;
- appropriateness of the proposal to the project Terms of Reference and Public Art Program goals;
- artistic merit of the proposal;
- degree to which the proposal is site and community responsive, and technically feasible;
- probability of successful completion; and
- environmental sustainability of the proposed artwork.

Next Steps

The Plan recommends a series of, at minimum, three major artworks, including opportunities for community-engaged artwork, during the construction and post-completion stages. Two significant artworks - those integrated in the landscape design and integrated with the building interior - require prompt implementation. Opportunities for the interior community-engaged artwork(s) will be explored with the community members after the facility is complete; examples include a single large-scale project, artist-in-residence and/or a number of smaller-scale interactive community workshops that result in legacy work(s).

Following Council's approval of the Plan, staff will immediately commence implementation. This will include bringing the Terms of Reference for each artist opportunity for Council's approval, and commencing the artist selection processes. Following each artist selection, the individual concept proposals will be brought forward to Council for approval, in order to proceed with the artwork.

The first two Terms of Reference will be brought to Council in the first quarter of 2023.

Members of the Steveston Community Society and Richmond Public Library Board will continue to be involved in developing each individual Terms of Reference and taking part in the artist selection process. Each Terms of Reference and recommended concept proposal will be brought forward to the Richmond Public Art Advisory Committee for endorsement.

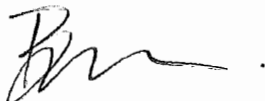
The Richmond Public Art Advisory Committee reviewed the Plan on November 15, 2022 and has endorsed it.

Financial Impact

The total project budget allocation, for public art to be integrated at the Steveston Community Centre and Library, is \$450,000. Any maintenance and repairs required to the artworks will be the responsibility of the Public Art Program and will be included as part of a future Operational Budget Impact (OBI) submission.

Conclusion

The Steveston Community Centre and Library will serve the public for generations to come. The Steveston Community Centre and Library Public Art Plan provides a framework for including art in the creation of a culturally rich environment and dynamic, inspiring facility – both inside and out – that reflects the values and intentions of its diverse and vibrant community.



Biliana Velkova
Public Art Planner
(604-247-4612)

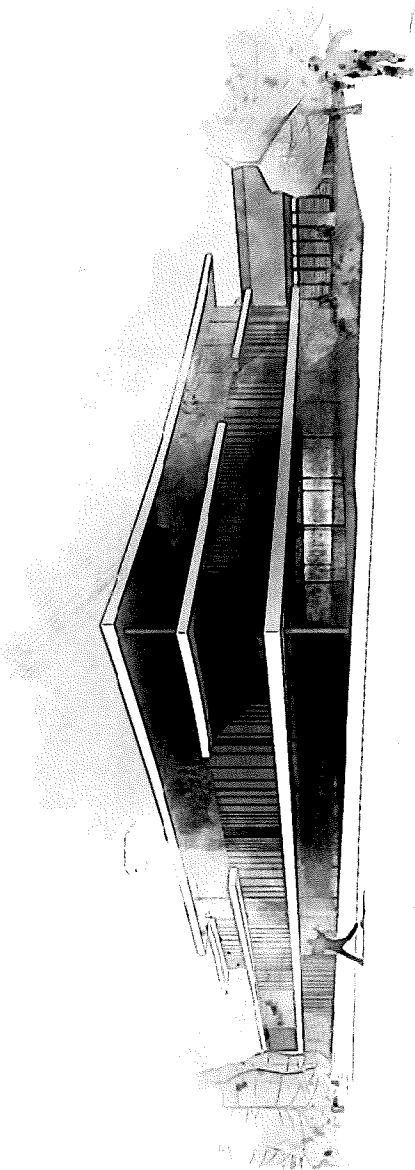
Att. 1: Steveston Community Centre and Library Public Art Plan



Public Art Plan
Steveston Community Centre and Library
City of Richmond, BC
November 2022

Table of Contents

Executive Summary	2
Background	3
Steveston Village context	4
Form and Character	5
Themes	9
Public Art Opportunities	11
Signature Outdoor Artwork	13
Integrated Indoor Artwork	15
Installed Indoor Artwork	16
Artist Selection Criteria	17
Artist Selection Process	18
Project Schedule & Budget	
Links/Photo Credits	



Concept sketch - HDR Architecture Associates

Executive Summary

The intention of the Steveston Community Centre and Library Public Art Plan (the Plan) is to guide the development and provision of artistic expression in public locations of the new Steveston Community Centre and Library. The new facility is envisioned to be the heart of the Steveston community, where residents will come to recreate, learn, play and connect in a welcoming and accessible environment.

Staff worked with members of the Steveston Community Society and Richmond Public Library Board to determine public art opportunities, approach, themes and potential locations. The resulting Plan reflects their collective perspective.

At least two significant public art projects are described in this Plan: one to be part of the landscape design of the entrance plaza, and at least one other to be fully integrated with the interior architectural features. The Plan also calls for a significant investment in artwork(s) developed through community engagement, to be created and installed once the facility is operational in order to involve a range of participants and stakeholders.

Artists will be encouraged to explore any of the following four themes for the artworks while ensuring room for artistic expression, enjoyment, play, colour and interactivity:

1. Indigenous Culture,
2. Steveston Fishing Industry,
3. Japanese Canadian History, and
4. Fraser River and Local Ecology.

As part of the Civic Public Art Program's 1% for public art the total contribution for the new Steveston Community Centre and Branch Library is \$450,000. Recommended budget allocations within that amount are provided on page 17.

As the individual project Terms of Reference are developed with further community consultation, the subsequent selection processes will follow the Public Art Program guidelines, outlined on pages 15–16.



Background

A replacement facility for the Steveston Community Centre and Library was approved by Richmond City Council in its priority list of major facility projects for 2016-2026. The program for the facility was approved in September 2019; the concept design and capital budget were approved by Council on July 26, 2021.

With the goal to serve the community into the future, the new 60,350 square foot, three-storey facility will include two gymnasiums, a fitness centre, community "living room", library and study areas, as well as several multipurpose rooms for community use.

In addition to community centre and library programs, the facility will host local and regional tournaments and events.

Steveston Village

Steveston is a historic fishing village located in the southwest corner of Richmond, BC. Known for its rich ecology at the mouth of the Fraser River, it was a place where Indigenous Peoples fished and gathered food for generations.

Settled in the second half of the 1800s, early Steveston supported robust canning, fishing, and boatbuilding industries. Fishing industries drew workers from near and far, especially Indigenous Peoples of coastal BC, Japan, China and Europe. After many prosperous years, Steveston was challenged by a number of tragic events throughout the 20th century — a drastic decline in the salmon stocks, a devastating fire in the village, the Great Depression, and the internment of its large Japanese population in 1942. Despite these challenges, Steveston continued to thrive as a fishing village and is still home to the largest fishing harbour in Canada.

In recent decades, Steveston has undergone significant growth and development, but retains its small town feel, historic character and fishing traditions.



Form and Character

The 60,350 square foot facility — with a 36,000 square foot footprint — will be a three-storey building plus one level of underground parking.

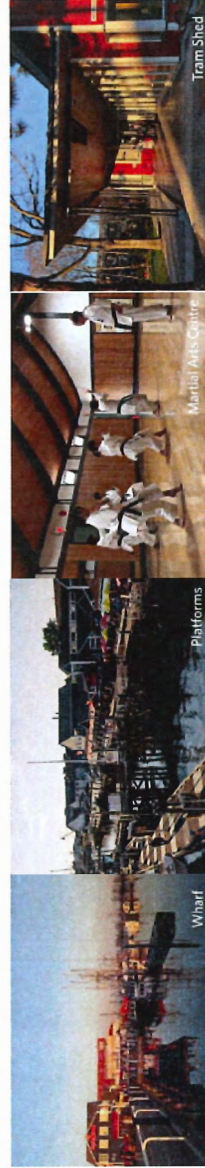
The designs will follow a balanced approach where program synergies are realized, impacts on green space and trees are minimized, and views and connections to the park are achieved from many of the program spaces.

The form and character of the building draws inspiration from various buildings and landmarks around the Steveston area, reflecting elements such as the platforms and docks at the Steveston waterfront, canopies and fascia trims from the Steveston Tram building, the traditional Japanese curved roof form of the Martial Arts Centre, as well as materials and patterns from the surrounding industrial buildings.

All these elements are cohesively incorporated to form a contemporary design.



Concept sketch - HDR Architecture Associates





Themes

Artists will be encouraged to explore any of the four themes for the artworks while ensuring room for artistic expression, enjoyment, play, colour and interactivity. The artworks should appeal to all ages and engage the community.

1. Indigenous Culture

For generations, Indigenous Peoples were drawn to the area's rich natural resources. Local Indigenous groups used the area to harvest its bounty including fish, shellfish, berries and crabapples.



Examples of public art projects involving Musqueam artists

Themes

2. Steveston Fishing Industry

Fishing has been the central driver of settlement in the Steveston area, which has served as a base for fishers to collect and process their harvest for hundreds of years. It is inherent to the long traditions of Indigenous Peoples fishing the Fraser River and Salish Sea. The early fishing industry served as the foundation upon which the community was built and it remains true for the more than 500 commercial vessels in Steveston Harbour today.



Themes

3. Japanese Canadian History

Canadians of Japanese descent have been fundamental to the development and growth of Steveston. In the early 20th century, Steveston was home to a vibrant Japanese Canadian (Nikkei) culture, which included the Steveston Japanese School, Japanese Hospital, boatworks buildings, kendo club and a significant wooden boat fishing fleet.

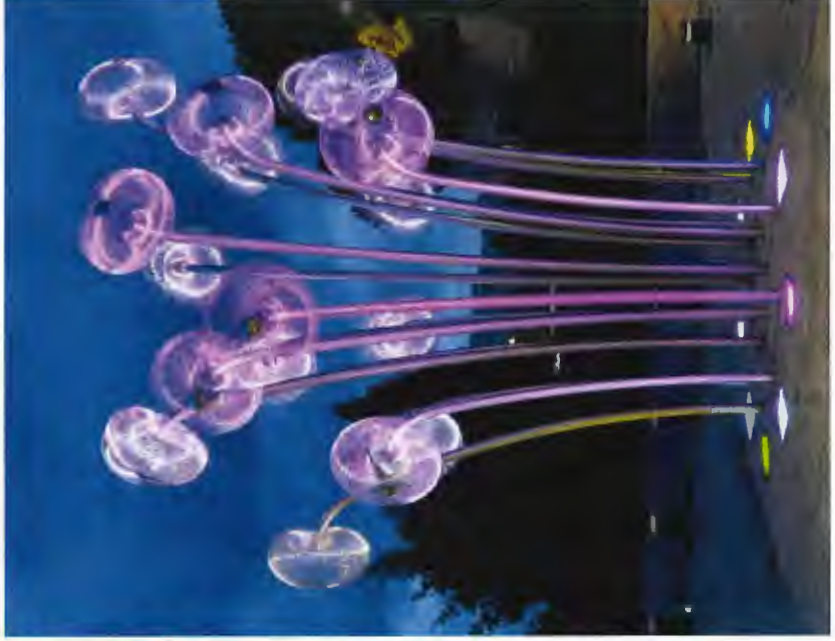


Themes

4. Fraser River and Local Ecology

Steveston exists in its current state in large part because of its physical and natural environment at the mouth of the Fraser River. Significant natural heritage can be found in the ecology of the tidal marshes, sloughs and mud flats. While many of the original natural features have been lost, traces of native vegetation, shoreline wildlife, marshes and sloughs are still present.





Examples of signature outdoor artworks

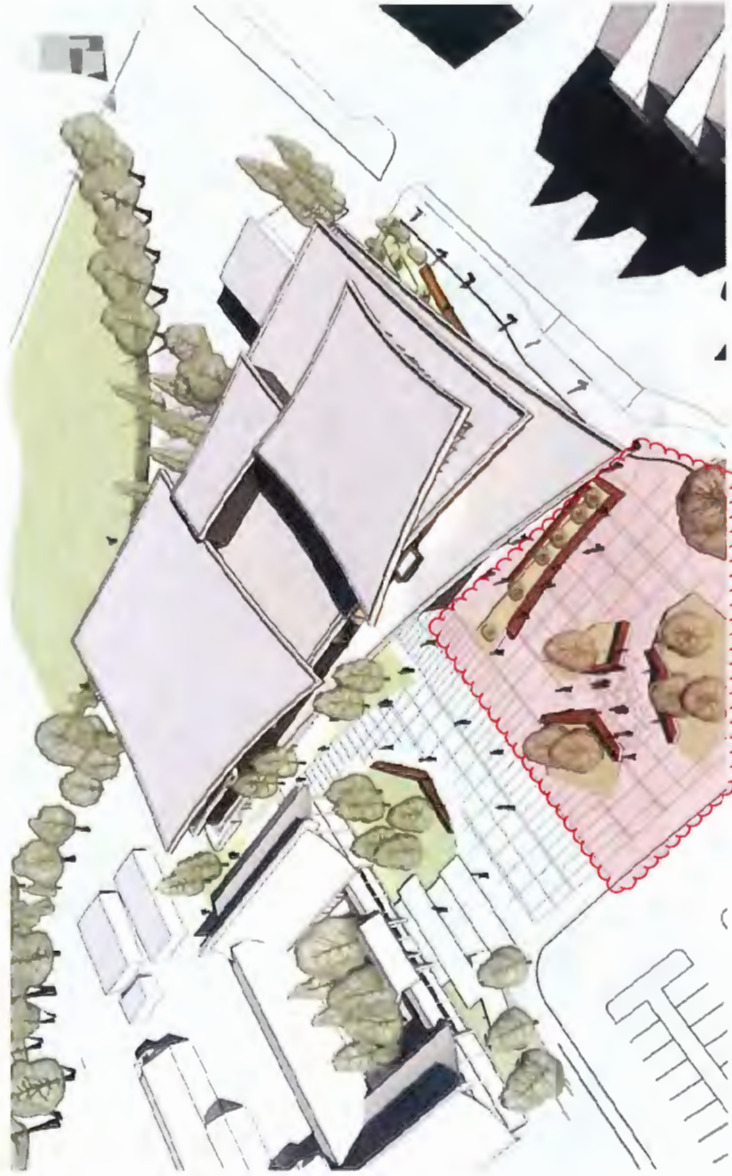
Public Art Opportunities

Signature Outdoor Artwork

A landmark, signature artwork is planned for the outdoor entrance plaza at Steveston Community Centre and Library.

The artwork will create a sense of welcome and arrival, as well as attract people to gather, play and connect.

The artwork may be a single stand-alone artwork, or series of sequential pieces.

Public Art Plan: Steveston Community Centre and Library

Concept sketch - HDR Architecture Associates

Public Art Opportunities**Signature Outdoor Artwork**

The proposed location for this artwork is the entrance plaza, located to the west of the facility.

This is a high profile site, visible from Moncton Street.



Examples of integrated artworks

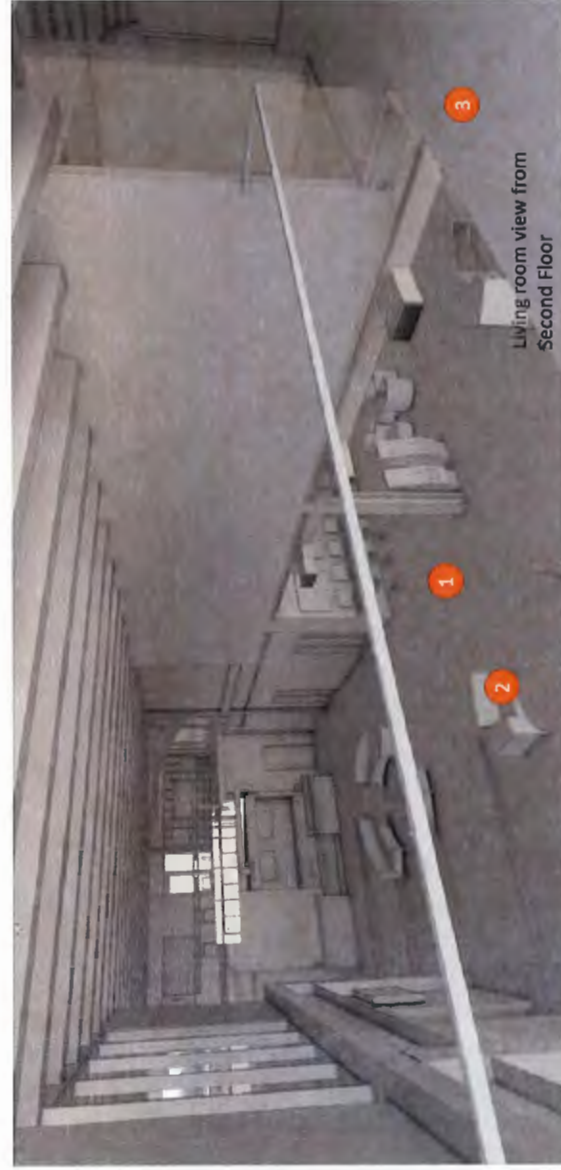
Public Art Opportunities

Integrated Interior Artwork

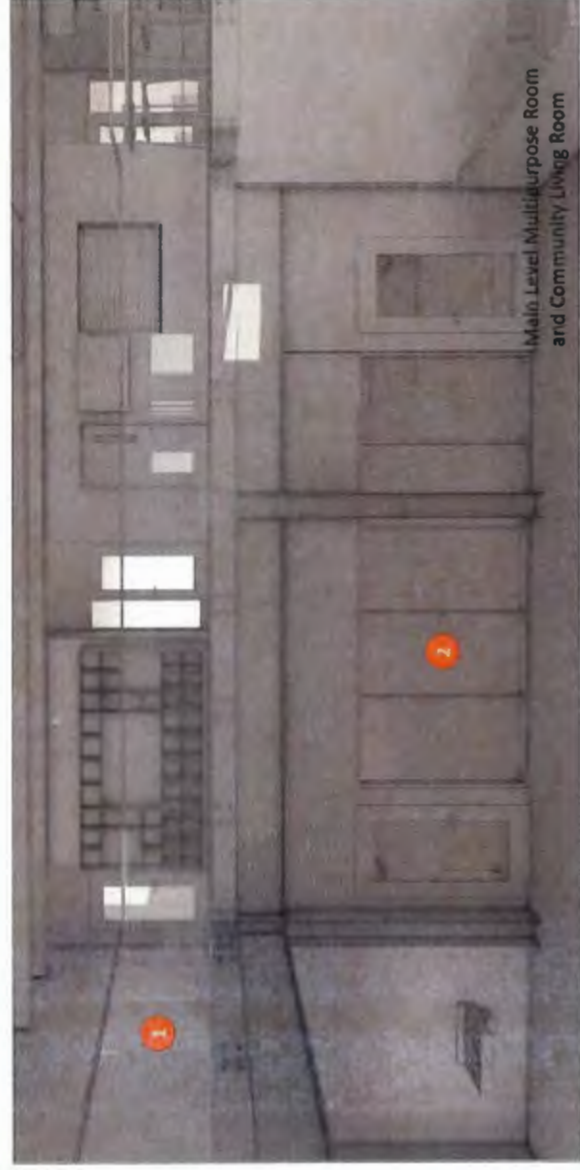
There are opportunities for interior integrated artwork within the Steveston Community Centre and Library.

They include surface treatments for floor or glazing, as well as furniture design.

Location(s) for integrated interior public artwork will be identified with project architects for development as early as possible to maximize opportunities for integrating the art into the interior architectural features.



Community Living Room and Second Floor



Multipurpose Room and Second Floor

Public Art Opportunities

Integrated Interior Artwork

Examples of interior locations* that could feature integrated public art:

Community Living Room and Second Floor

1. Community Living Room: floor treatment
2. Community Living Room: furniture design
3. Second Floor: floor treatment

Multipurpose Room and Second Floor

1. Second Floor: in glazing of guardrail
2. Multipurpose Room: in glazing on main floor

* Examples only; sample interiors and opportunities subject to change



Examples of community-engaged/informed artworks

Public Art Opportunities

Installed Interior Artwork

There are opportunities for permanent artwork to be installed inside the Steveston Community Centre and Library after the facility is complete.

Artwork(s) would be created through a community-engaged and/or community-informed process with the participation of local residents, and may involve artist(s)-in-residency spending time with staff, visitors, volunteers, community organizations and other stakeholder groups to involve a spectrum of demographics.



Community Living Room and Second Floor

Public Art Opportunities

Installed Interior Artwork

Location(s) for this type of artwork would be determined after completion of the facility, once public programs are well underway.

Examples of interior locations* that could feature installed public art:

Community Living Room and Second Floor

1. Community Living Room: large wall facing main entrance
2. Community Living Room: wall space above elevators

* Examples only; sample interiors and opportunities subject to change

Artist Selection Criteria

Public Art Program staff, in consultation with the Richmond Public Art Advisory Commission will organize an open artist selection process for each public art opportunity. The selection criteria will be detailed in the Request for Qualifications or Proposals (RFQ, RFP) and will be in accordance with the Public Art Program guidelines. A typical set of criteria may include the following:

- artist qualifications and proven capability to produce work of the highest quality;
- artist's capacity to work in demanding environments with communities and other design professionals, where applicable;
- appropriateness of the proposal to the project Terms of Reference and Public Art Program goals;
- artistic merit of the proposal;
- degree to which the proposal is site and community responsive, and technically feasible;
- probability of successful completion; and
- environmental sustainability of the proposed artwork.



Dream of the River, Steveston, Glen Andersen, 2016

Artist Selection Process

The artist selection process will adopt a one- or two-stage selection process based on the scale of the project. For lower budget projects, a typical one-stage selection process will involve a three-five person selection panel to review all submissions and recommend an artist or artist team for the commission.

For medium to large-scale projects, a typical two-stage selection process will engage a five-person selection panel. Short-listed artists in Stage II will receive an honorarium to develop their concept proposals and will be required to complete and submit the following:

1. **Site Orientation** - Artists will be required to attend a site orientation and meeting with City Representatives and other project consultants.
2. **Submission** - Artists will be required to submit the following to the Public Art Program for Technical Review and preparation for presentation to the Selection Panel. Technical questions will be forwarded to the artists prior to the presentation to the Selection Panel.

- **Statement of Intent** - Artists will be required to forward a two page statement of intent.
- **Artist CV** - artists will be required to forward their current artist CV.
- **Portfolio of previous work** - Artists to submit a minimum of ten images of completed works, each to include a caption with title, medium/materials, completion date, dimensions and total budget.
- **Scaled Maquette and/or Renderings** - Artists will be required to provide a concept proposal, maquette and/or rendered illustrations to best represent their concept proposal.
- **Budget** - Artists will be required to identify a preliminary budget based on their concept proposal. The artwork budget is inclusive of all taxes, artist fees, artist sub-consultant fees, fabrication and installation costs.

- **Project Timeline** - Artists will be required to provide a project timeline identifying proposed key project stages in line with the project schedule to allow for review and coordination with design consultants.
- **References** - Artists will be required to provide up to a list of three references, including names and contacts of references who can speak of their practice working collaboratively with others and also to their public art production experience.

3. **Presentation** - Artists will be required to give a 15-20 minute presentation on their concept proposal to the Selection Panel. A Q & A will follow with the Selection Panel.

Note: The City and the Selection Panel are not obliged to accept any of the submitted concept proposals, and may reject all submissions. The City reserves the right to reissue the Request for Proposals (RFP) as required.

Public Art Plan: Steveston Community Centre and Library

Project Schedule & Budget

The total budget for the Steveston Community Centre and Library Public Art Project is \$450,000. \$30,000 has been set aside for administration costs such as those associated with artist selection. The remaining budget of \$420,000 will be available to cover all implementation expenses including design, production, fabrication, taxes and other associated costs to deliver a completed artwork on site.

The Steveston Community Centre and Library Public Art Project is funded from the approved Steveston Community Centre and Library capital project. Any maintenance and repairs required to the artwork will be the responsibility of the Public Art Program and will be included as part of a future Operational Budget Impact (OBI) submission.

The anticipated project timelines will coincide with the base-build construction schedule and the tenancy fit-out construction schedule.

*Note: Project budgets are subject to change and may be revisited to meet specific project requirements.

Public Art Opportunity	Location	Artist Selection Process	Artist Call	Completion	Budget*
Signature Outdoor Artwork	Outdoor Entrance Plaza	2-stage	Q1 2023	in tandem with completion of building	\$250,000
Integrated Interior Artwork(s)	TBD (eg floor, furniture, glazing)	2-stage	Q1 2023	in tandem with completion of building	\$100,000
Installed Interior Artwork(s) (community-engaged)	TBD (eg wall near main entrance)	1 and/or 2-stage	TBD	TBD	\$70,000
TOTAL for all projects					\$420,000
Project Administration (such as artist selection)					\$30,000

Public Art Plan: Steveston Community Centre and Library

Links

[Richmond.ca/PublicArt](https://richmond.ca/PublicArt)

[Richmond.ca/Culture/PublicArt/Policy](https://richmond.ca/Culture/PublicArt/Policy)

[Richmond.ca/FacilityProjects](https://richmond.ca/FacilityProjects)

Photos

Page 2:

Imperial Landing Walkway with BC Packers Cannery public art feature

Page 5:

Fish Trap Way, River Road, Thomas Cannell & Susan A. Point, 2014
Hand-woven blanket by Debra Sparrow, 2022

Page 6:

Steveston Fishermen's Memorial, Garry Point Park, George Juhasz & Georg Schmerhotz, 1996
Nikkei Archival photo - seized fishing fleet

Page 7:

Nikkei Memorial by Hapa Collaborative/Joseph Fry (opening event), 2019
Nikkei Archival photo - Mother and children

Page 9:

Together, Minoru Centre for Active Living, David Jacob Harder, 2019
Marquise, El Paso Westside Natatorium, Marc Fornes, 2018
Sonic Playground, High Museum of Art Atlanta, Yuri Suzuki, 2018
Bubble Forest, Altarea, Mirek Struzi, 2019

Page 11:

Motif of One and Many, City Centre Community Centre, Rebecca Bayer, 2015
Tsa Tsa Ke K'e— Iron Foot Place, Edmonton's Rogers Place Arena, Alex Janvier, 2016
Custom seating and wall dividers by molo design studio
Life Nurtured, Norton Cancer Institute, Kenneth von Roenn, 2011

Page 12:

Stepping Stones, City Centre Community Centre, Nadine Flagel & Deirdre Pinnock, 2018
The Author & Her Story, San Francisco International Airport, Jason Jägel 2019
Maple Ridge Community Mosaic, Maple Ridge Leisure Centre, Rebecca Bayer & David Gregory, 2020