



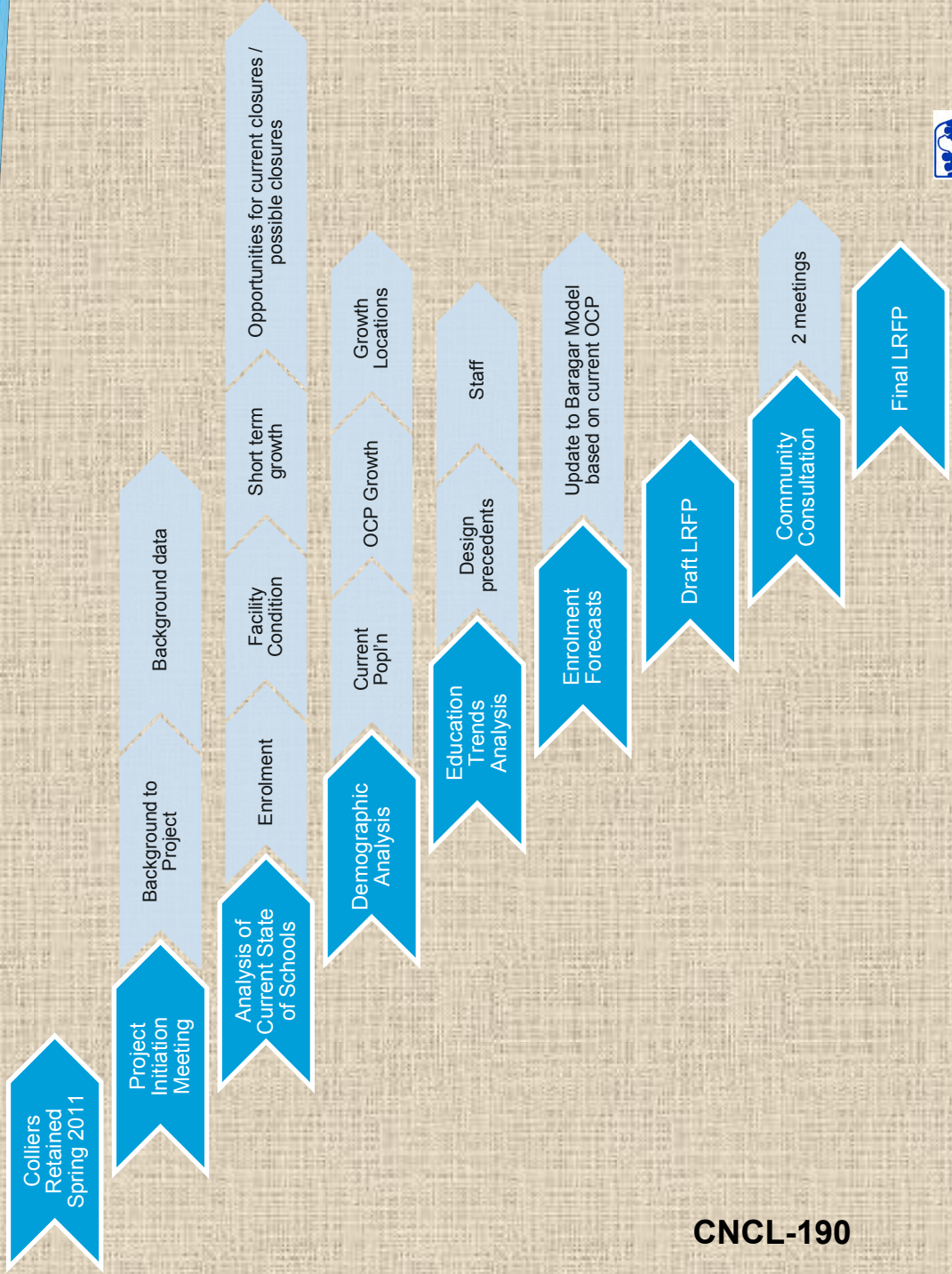
Richmond School District 38 LRFP Interim Report

November 21st, 2011

CNCL-189

Accelerating success.

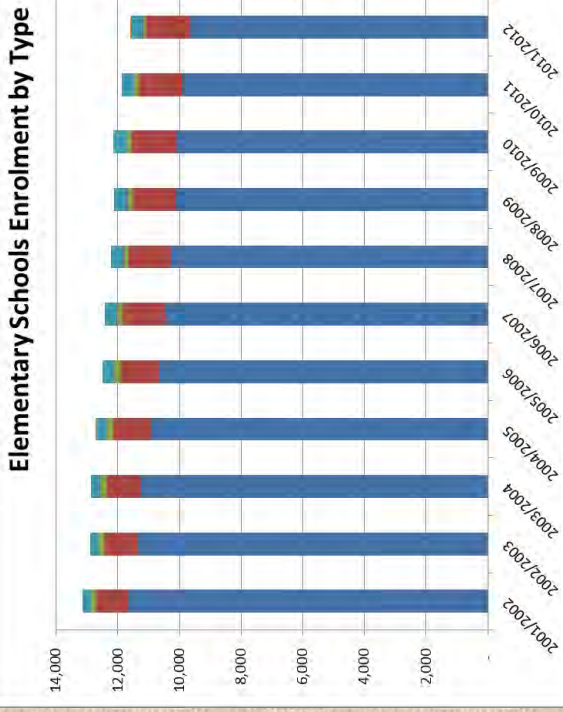
Work Plan (ToR)



CNCL-190



Global Enrolment (historical)



Elementary enrolment decrease 1,272 between 2001 and 2011

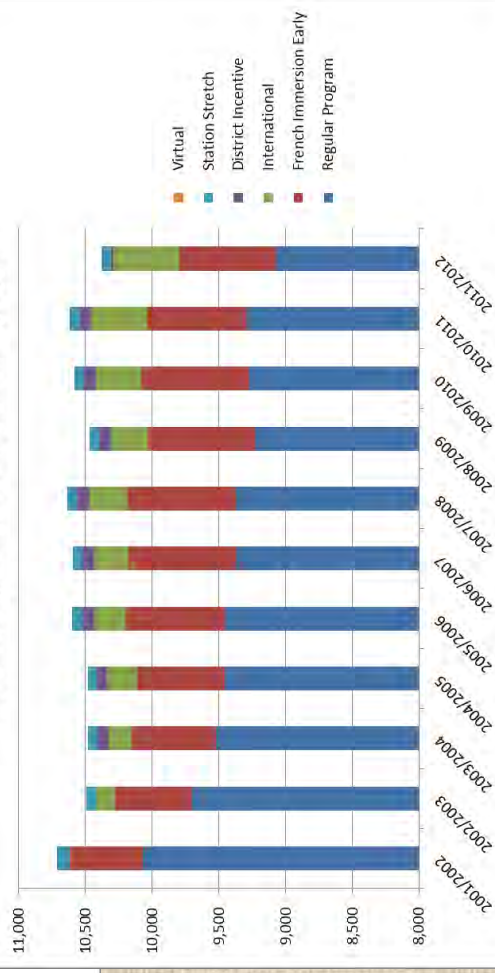
2010 Total: 11,883
2011 Total: 11,590
(293)

Graph -1- Elementary School Enrolment by Program 2001 to 2011

Secondary enrolment decrease 674 between 2001 and 2011

2010 Total: 10,596
2011 Total: 10,337
(259)

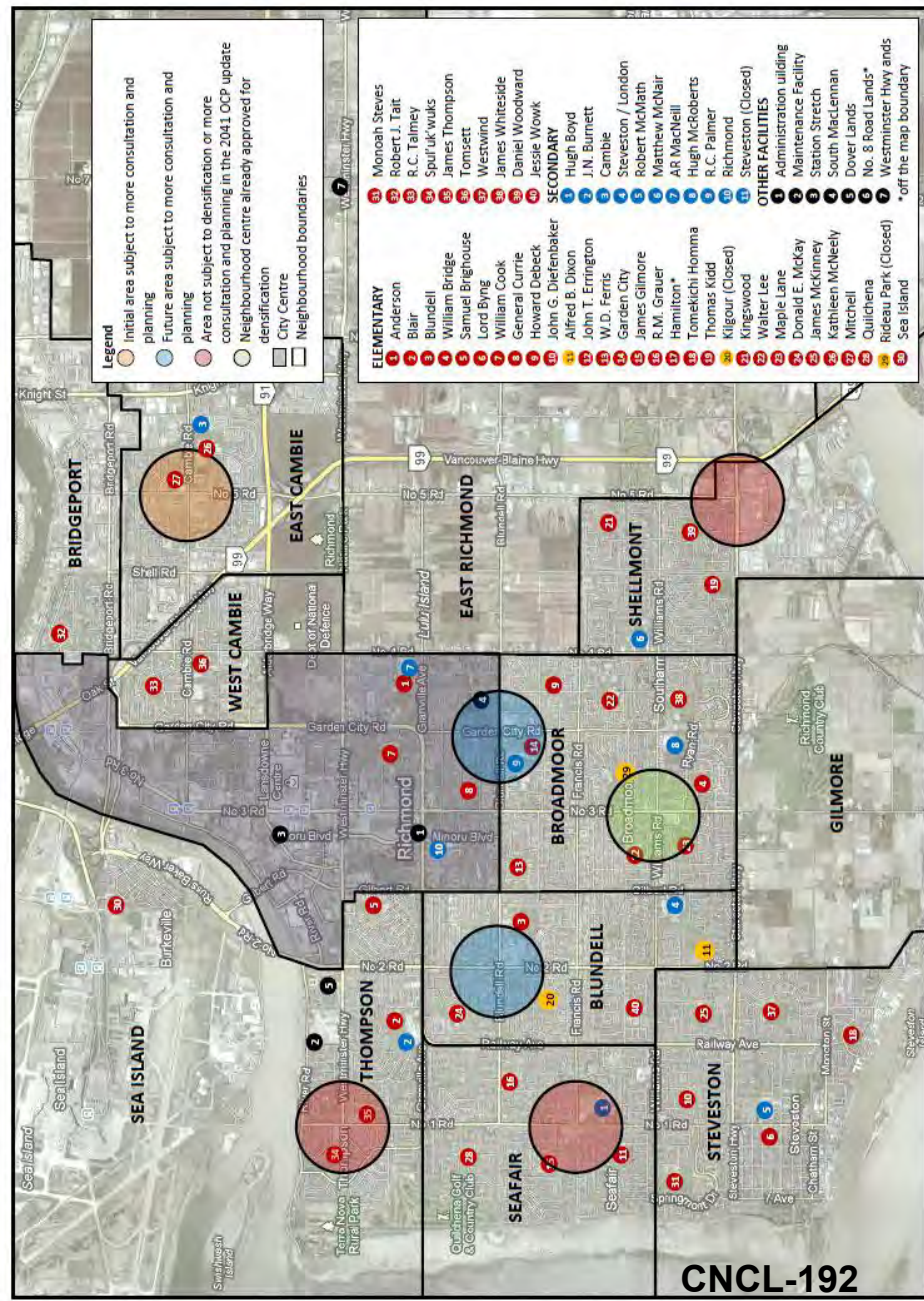
Secondary Schools Enrolment by Type



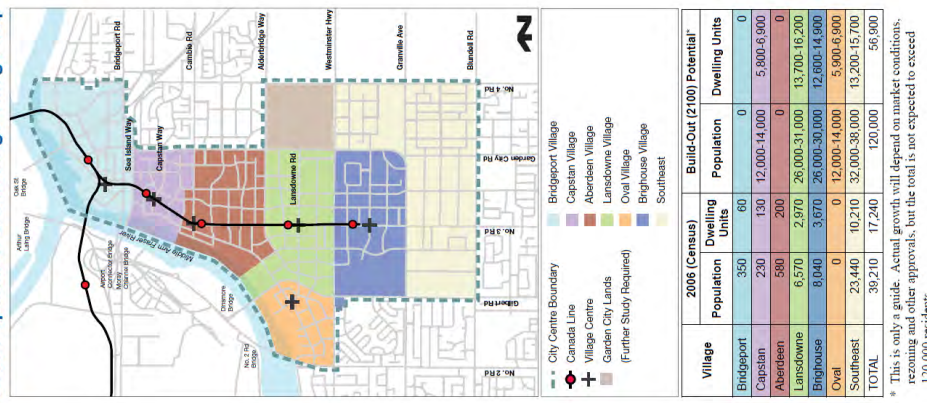
Graph -2- Secondary School Enrolment by Program 2001 to 2011



☑ OCP Targeted Future Growth



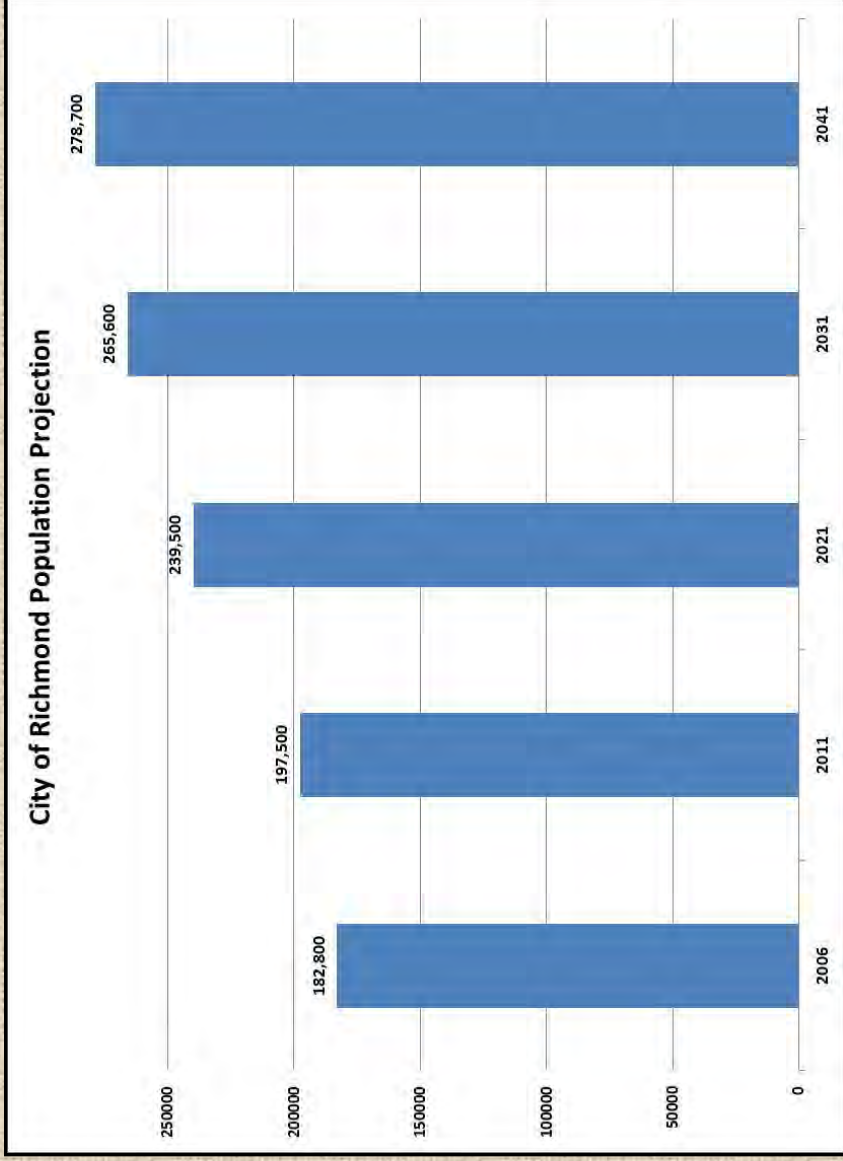
2100 Population & Dwellings Village Map



Population Projection



- Richmond is expected to add 42,000 people between 2011 and 2021.
- The city's population will be approximately 280,000 in 2041.



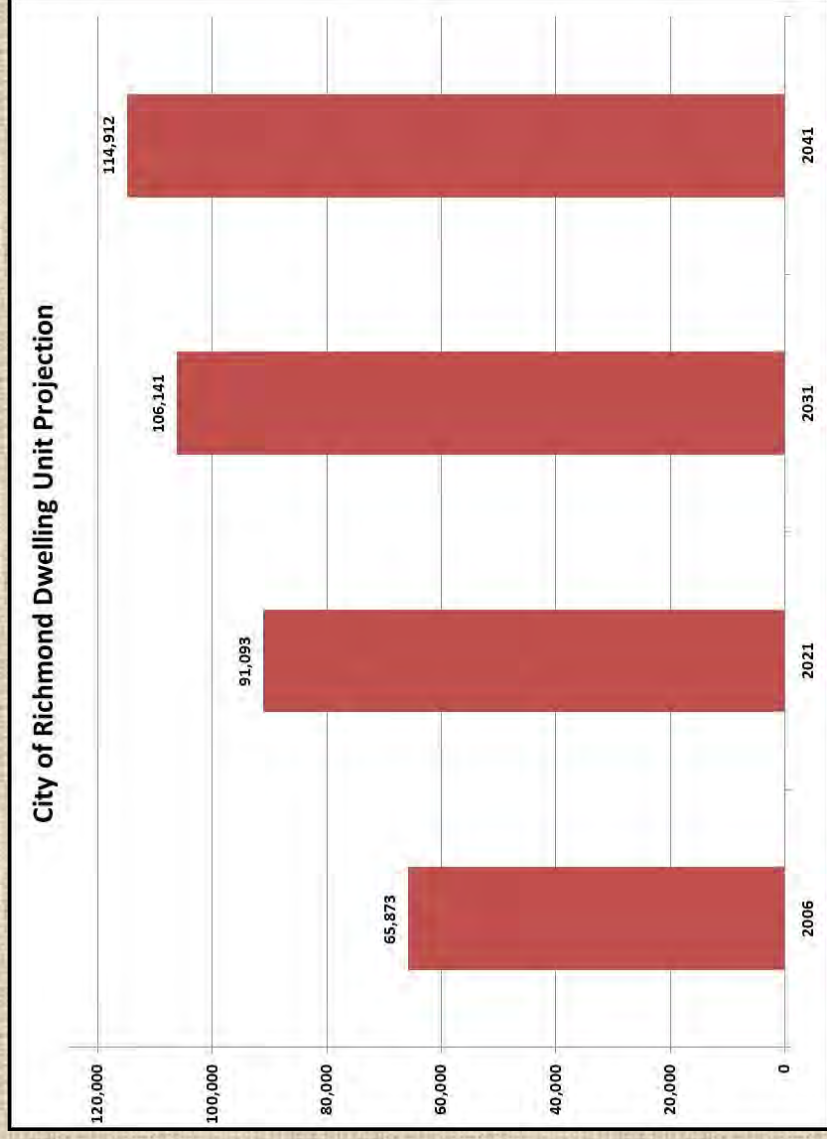
CNCL-193



Dwelling Unit Projection



- The city will add almost 50,000 new dwelling units between 2006 and 2041.
- Over 25,000 of these new units will be built by 2021.
- The majority of these will be in CC.

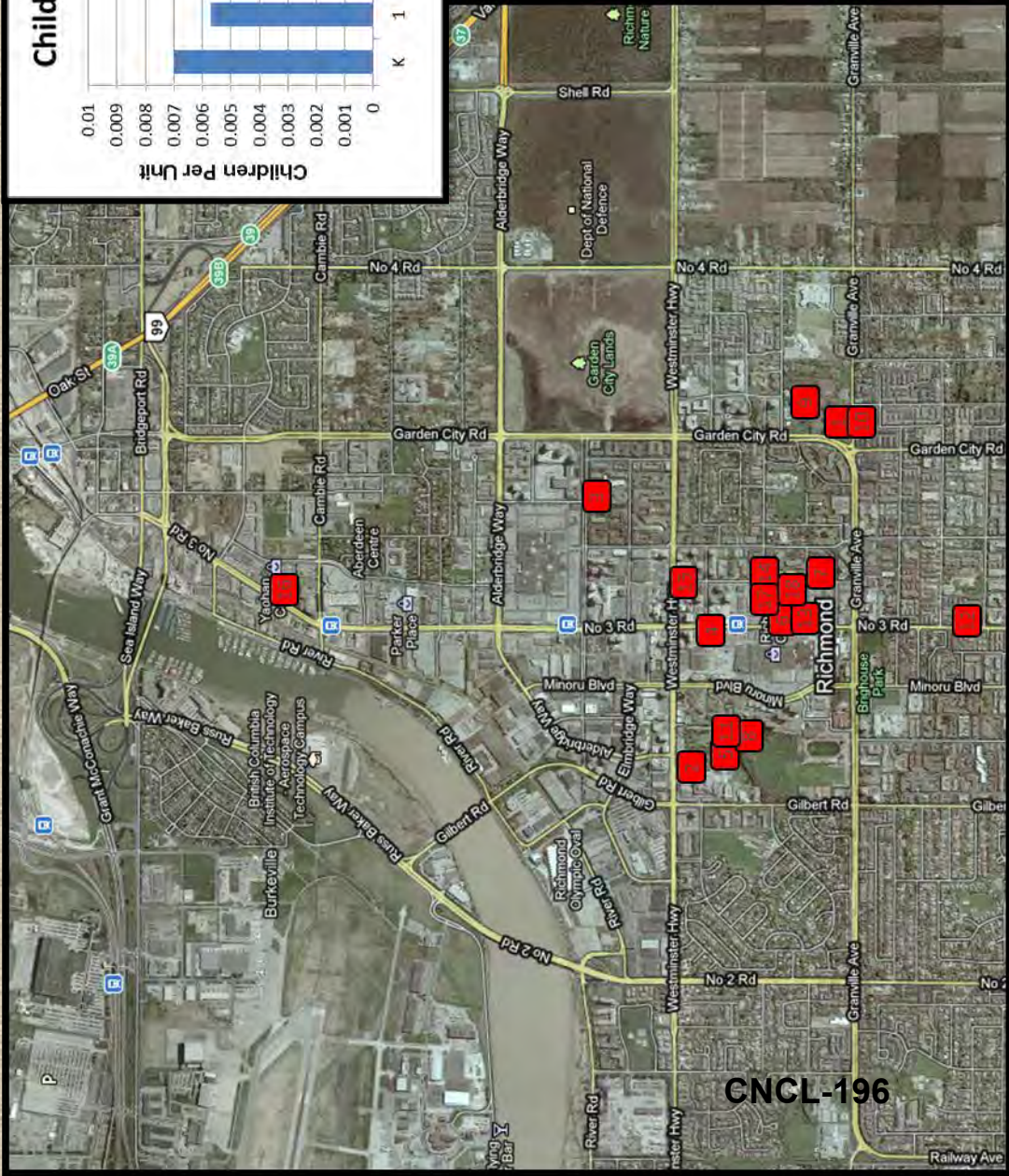


High Rise Induced Demand

- The Urban Institute predicts the City Centre population will increase by almost 54,000 people between 2009 and 2041.
 - The number of children under the age of 15 will grow by 7,075, or an increase of 118%
 - The City Centre will account for 61% of the city's total population growth and 87% of under 15 population growth.

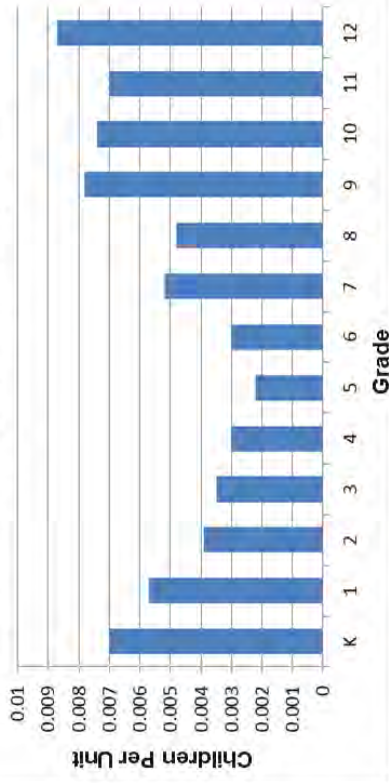


High Rise Induced Demand



GNCL-196

Children in High Rise Units By Grade



- For every 12,000 new high rise units a 400-capacity elementary school is required.
- For every 33,700 units a 1200-capacity secondary school is required.



Elementary Enrolment Projections to 2040

Status	Elementary	2011	2015	2020	2025	2030	2035	2040	Capacity	Capacity Relative to 2025
Green	Anderson	539	700	832	904	985	1,029	1,050	680	224
Orange	Blair	220	215	304	364	322	264	198	240	124
Green	Blundell	206	231	228	200	189	169	143	265	-65
Orange	Bridge	328	312	399	422	423	417	408	380	42
Green	Brighthouse	371	490	675	812	976	1,091	1,175	505	307
Green	Byng	334	352	397	416	431	425	405	455	-39
Red	Cook	509	578	729	813	889	921	925	520	293
Orange	Currie	489	507	554	609	633	626	600	555	54
Green	De Beck	289	312	329	343	345	330	305	440	-97
Green	Diefenbaker	247	243	240	242	230	206	177	505	-263
Green	Dixon	378	430	447	451	441	425	407	430	21
Green	Errington	208	197	179	184	176	159	137	415	-231
Green	Ferris	509	468	489	516	523	503	468	705	-189
Green	Garden City	227	207	229	248	262	263	256	340	-92
Green	Gilmore	392	354	357	364	358	342	320	530	-166
Green	Grauer	228	218	251	302	331	344	347	455	-153
Green	Hamilton	414	420	454	482	483	459	422	480	2
Red	Gamma	537	605	680	706	703	700	700	580	126

Note: Red indicates projected enrolment that exceeds capacity.

Green indicates no apparent capacity issues identified.

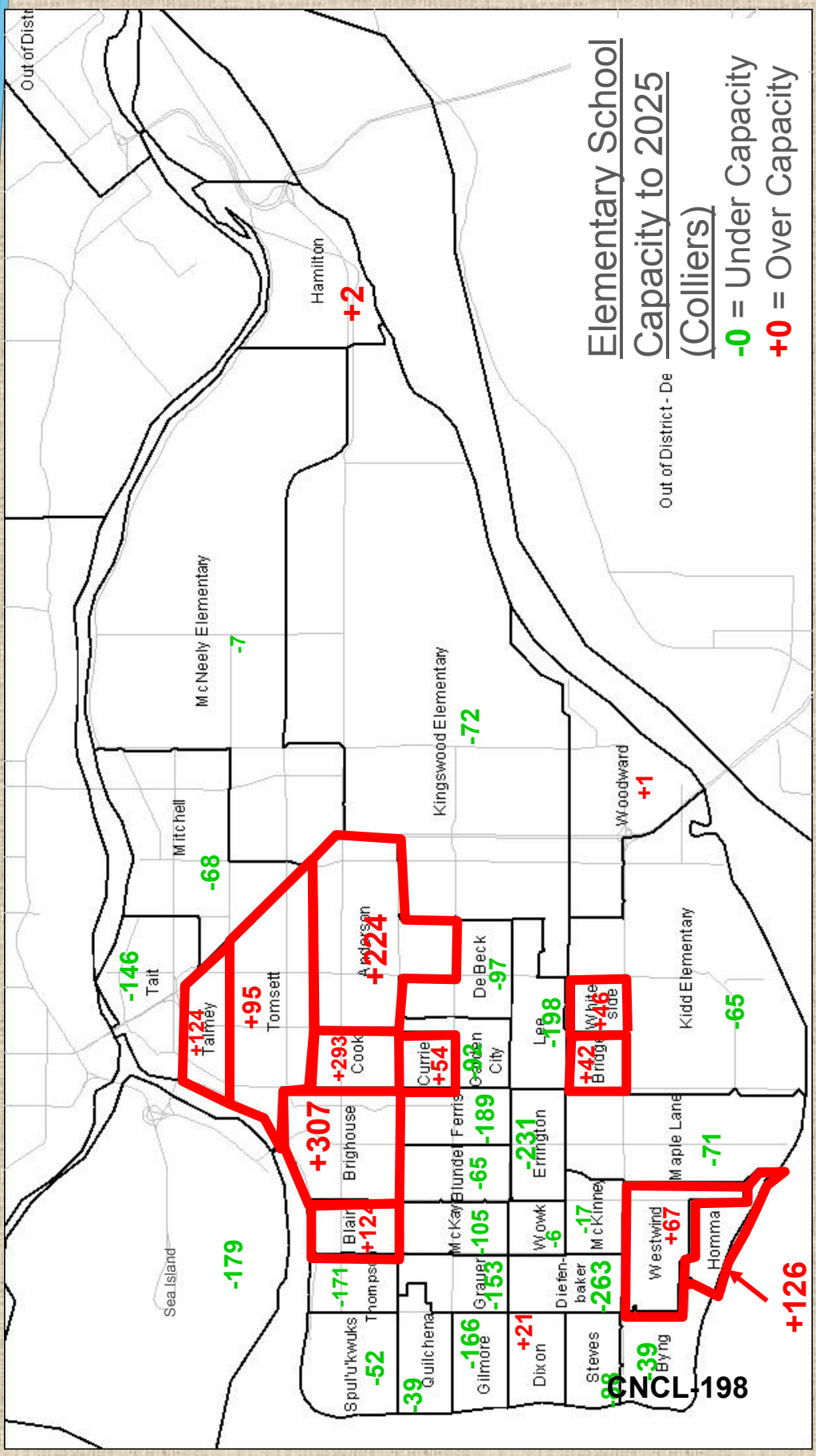
Orange indicates potential capacity issues mid term.

Red indicates capacity issues identified in the short/mid term.

Status	Elementary	2011	2015	2020	2025	2030	2035	2040	Capacity	Capacity Relative to 2025
Green	Kidd	233	219	230	230	234	227	212	295	-65
Green	Kingswood	252	235	217	243	235	216	190	315	-72
Green	Lee	279	292	320	332	339	330	310	530	-198
Green	Maple Lane	182	174	179	194	191	179	161	265	-71
Green	McKay	158	173	167	185	183	172	156	290	-105
Green	McKinney	317	381	403	398	388	360	320	415	-17
Orange	McNeely	374	409	488	523	586	620	635	530	-7
Green	Mitchell	400	426	429	437	424	396	359	505	-68
Green	Quilchena	161	175	176	176	170	155	136	215	-39
Green	Sea Island	40	35	36	36	35	33	29	215	-179
Green	Spul'ukwuk	441	446	398	403	366	312	247	455	-52
Green	Steves	293	287	310	342	352	345	327	430	-88
Green	Trait	295	294	298	284	277	257	229	430	-146
Orange	Talmey	195	298	408	479	556	604	636	355	124
Green	Thompson	215	210	209	234	237	228	212	405	-171
Orange	Tomsett	233	312	382	425	474	503	516	330	95
Orange	Westwind	477	516	549	572	582	563	527	505	67
Red	Whiteside	434	374	380	401	410	410	403	355	46
Green	Woodward	181	224	279	291	294	281	261	290	1
Green	Wowk	230	207	201	209	205	190	170	215	-6



Elementary Enrolment projections to 2025



Secondary Enrolment projections to 2040



Status	Secondary	2011	2015	2020	2025	2030	2035	2040	Capacity	Capacity Relative to 2025
	Burnett	1,205	1,013	1,110	1,128	1,115	1,057	973	1,200	-72
	Cambie	838	692	710	778	785	759	715	1,050	-272
	Hugh Boyd	849	840	853	876	853	796	719	900	-24
	MacNeill	972	971	1,192	1,521	1,561	1,539	1,482	1,200	321
	McMath	1,259	1,315	1,322	1,491	1,485	1,437	1,365	1,300	191
	McNair	950	957	958	943	923	862	779	1,200	-257
	McRoberts	1,108	924	861	967	967	945	909	950	17
	Palmer	737	639	617	664	659	629	583	1,000	-336
	Richmond	1,342	1,494	1,745	2,107	2,161	2,125	2,034	1,200	907
	Steveston-London	1,216	1,161	1,158	1,163	1,132	1,054	950	1,375	-212

Note: Red font indicates projected enrolment that exceeds capacity.

No apparent capacity issues identified.

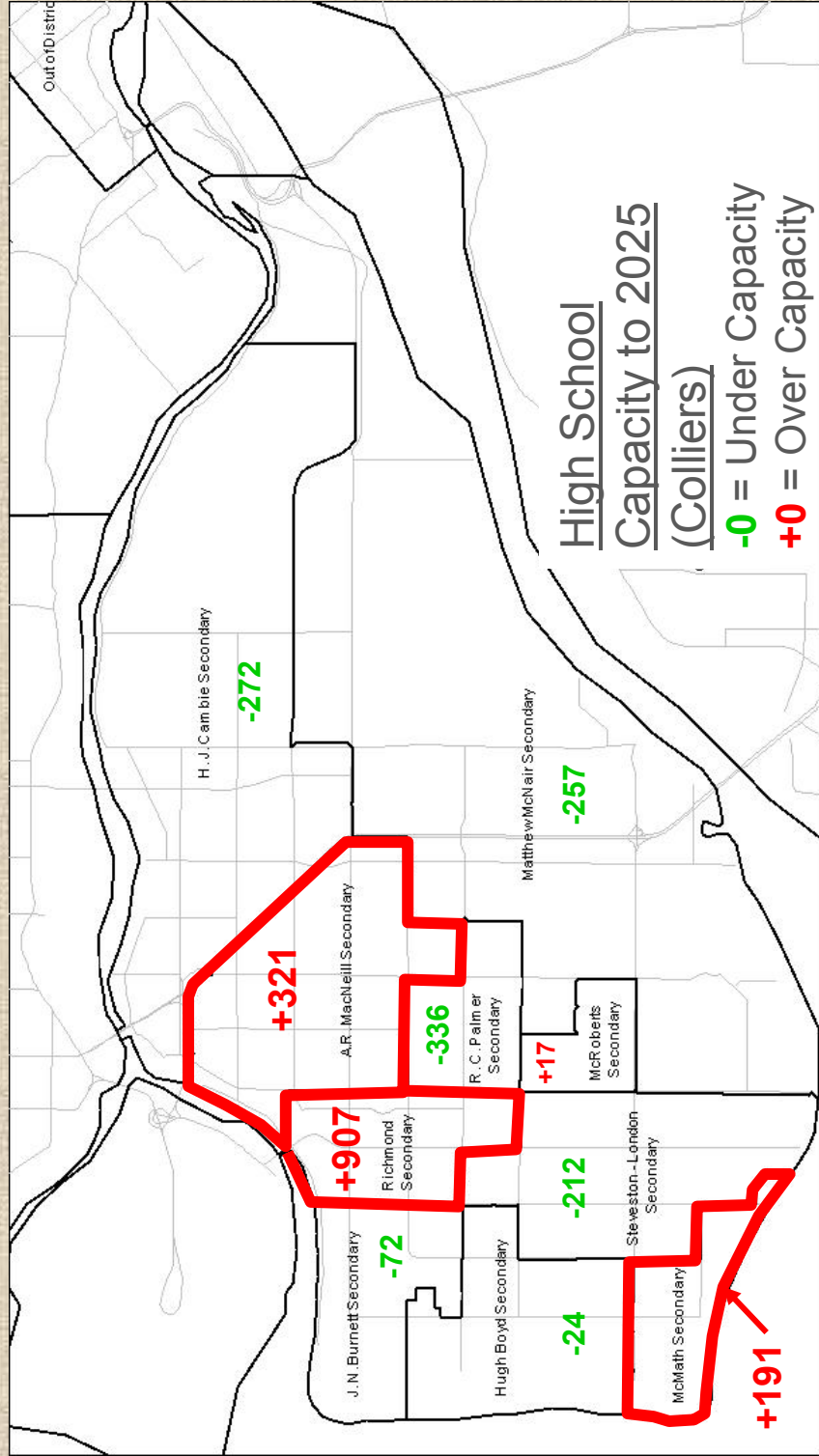
Potential capacity issues mid term.

Capacity issues identified in the short/mid term.

CNCL-199



Secondary Enrolment projections to 2025



CNCL-200



Building Conditions



- ☑ In 2010 all Elementary and Secondary Schools were reviewed by VFA to evaluate building systems and overall conditions;
- ☑ The schools were evaluated based on warranted renovation/upgrade cost compared to new construction cost;
- ☑ Approximately 8 Elementary Schools have a higher renovation to build new index which means of the 38 Elementary Schools, these 8 should be considered further prior to additional monies being spent on renovations;
- ☑ The 8 Schools perhaps warrant greater renovation/upgrade relative to the others but compared to other SD's in the Province these schools would be considered to be in pretty good shape; and
- ☑ The Building Conditions Reports should be considered by SD38 as part of the LRFPP and future capital budget requests.

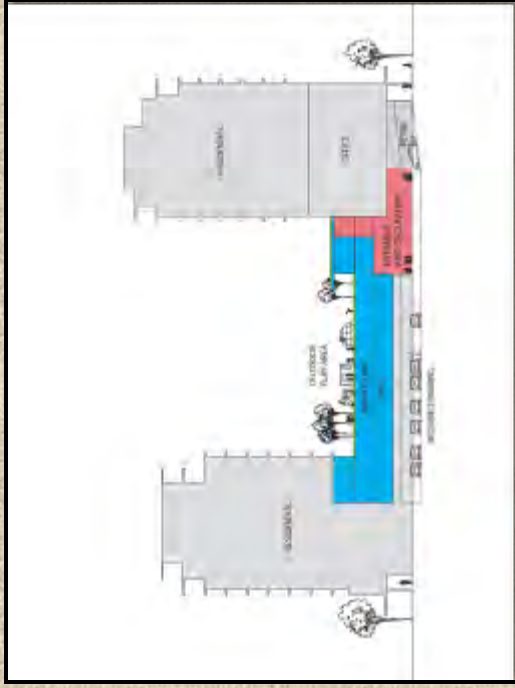
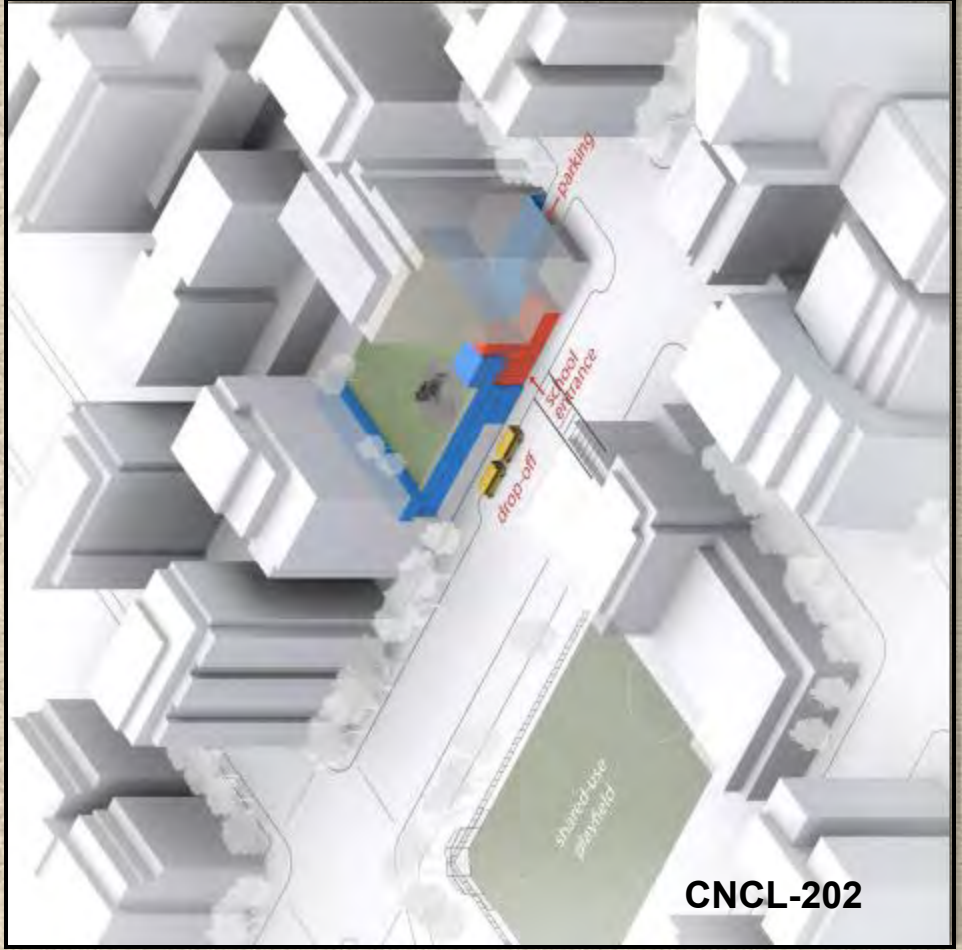
CNCL-201



City Centre Design Options



☑ Emerging Design Trends / Prototypes



Next Steps



- Set dates for Public Consultation
- Open Houses in early 2012
- Finalize LRFP
- SD38 move forward to plan for new schools in City Centre and schools under capacity pressure
- SD38 move forward to plan for disposition of currently closed schools

Status	Secondary	Comments
	MacNeill	Monitor / Mid term growth
	McMath	Monitor / Mid term growth
	McRoberts	Monitor/ short term growth then static
	Richmond	Significant Growth/new School in CC
Status	Elementary	Comments
	Anderson	Significant Growth/Renovation/ New CC School
	Blair	Monitor/2018 expansion
	Bridge	Monitor/2021 expansion
	Brighthouse	Significant Growth/Renovation/ New CC School
	Cook	Significant Growth/Renovation/ New CC School
	Currie	Monitor/2025 expansion
	Homma	Significant Growth/Renovation/ New CC School
	McNeely	Monitor/long term growth
	Sea Island	Monitor/Consider Closure
	Talmey	Monitor/2021 expansion
	Tomsett	Monitor/2018 expansion
	Westwind	Monitor/2018 expansion
	Whiteside	Monitor/Moderate growth short term
Status	Other Sites	Comments
	Administration	Monitor - No Action
	Works Yard*	Monitor City Works Yard/Plan for Relocated Facility
	No 8 Rd. Lands*	Hold - No action
	Westminister Hwy Lands	Hold - No action
	South McLennan Lands	Hold - No action
	Dover Lands	Part of Strategic City Centre School plan
	Kilgour	Remain Closed - Consider Disposition
	Rideau	Remain Closed - Consider Disposition in light of activities
	Steveston High	Remain Closed - Consider Disposition

* Strategic decision involving asset requirements/functions.

Note: Red font indicates projected enrolment that exceeds capacity.

No apparent capacity issues identified.

Potential capacity issues mid term.

Capacity issues identified in the short/mid term.



Thank You



School District 38 (Richmond)

CNCL-204