

CONTEXT



VIEW #1: CHURCH PROPERTY



VIEW #2: EXISTING PROPERTY



VIEW #3: TOWNHOUSE DEVELOPMENT



VIEW #4: KATSURA NEIGHBOURHOOD PARK



FERNDALE TOWNHOUSE

9331 Ferndale Road

DATE: November, 2024
project no.: DP2020-35



SITE PLAN



FERNDALE TOWNHOUSE

9331 Ferndale Road

DATE: November, 2024
project no.: DP2020-35



PERSPECTIVES



FERNDALE TOWNHOUSE

9331 Ferndale Road

DATE: November, 2024
project no.: DP2020-35



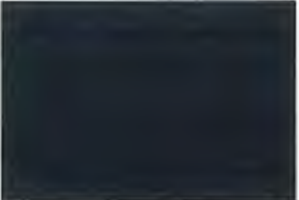
MATERIAL BOARD



ROOF: ASPHALT SHINGLES
COLOR GREY



WALLS: BOARD AND BATTEN
COLOR THUNDER



WALLS: HARDIE HORIZONTAL SIDING
COLOR DEEP OCEAN



WALLS/BOX OUT: HARDIE SHINGLES



PRIVACY SCREEN, WOOD TRIMS, VINYL WINDOWS
COLOR: DISTANT GRAY



SOLID-CORE EXTERIOR DOOR
COLOR: CHINESE RED



VINYL WINDOWS
COLOR: BLACK



VINYL SOFFIT
COLOR: WHITE



BRICK I-XL MONUMENT

OVERALL SITE PLAN



Map: NTS

AMENITY/PLAYGROUND 1

- 1 AMENITY/PLAYGROUND
- 1a SLIDE
- 1b SANDBOX
- 1c PLAYHOUSE
- 2 BENCH
- 3 PERIMETER WALKWAY
- 4 CONCRETE PATIO
- 5 LAWN
- 6 SHRUB PLANTING
- 7 RETAINED TREES
- 8 BIKE RACK
- 9 MAIL BOX
- 10 PMT
- 11 VISITOR PARKING/GRASS GRID
- 12 PROJECT SIGN
- 13 PERMEABLE PAVING



OVERALL SITE PLAN



CABIN AND SLIDE



SANDBOX



SANDBOX TABLE



PLAYHOUSE



STEPPING LOGS



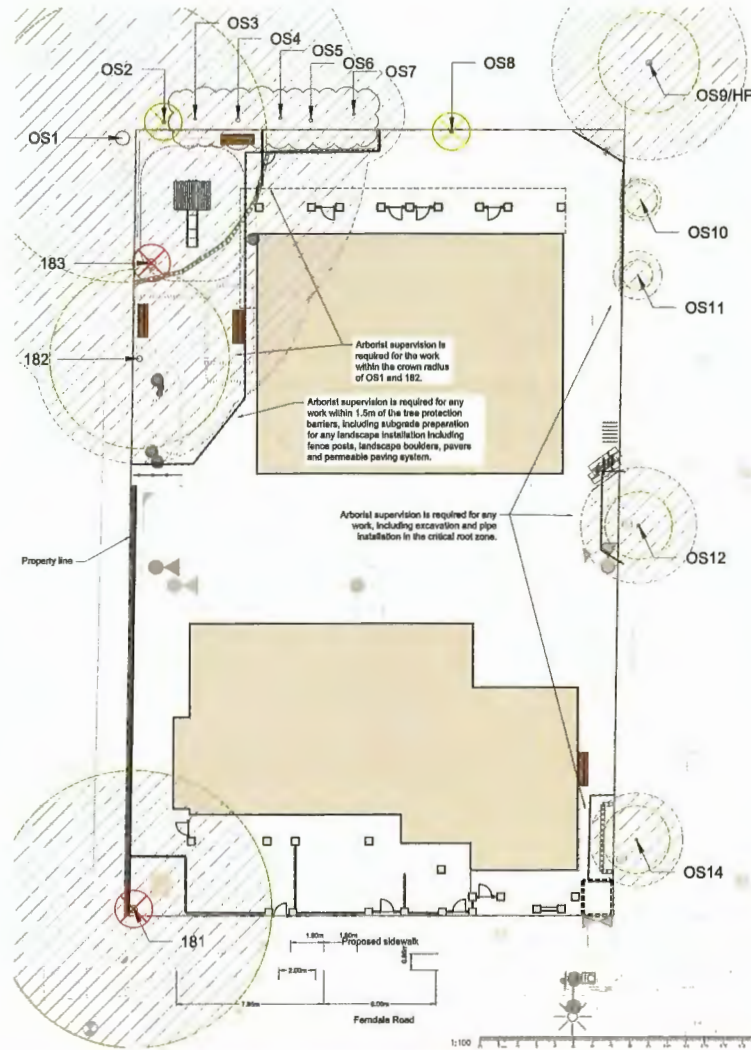
MAILBOX TRELLIS



PROJECT SIGNAGE

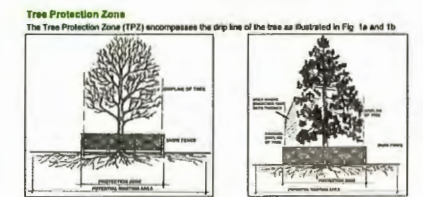
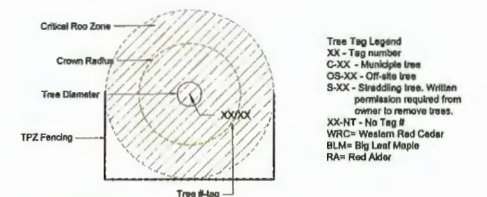


TREE MANAGEMENT PLAN



LEGEND

Existing Tree to be Retained	Existing Tree to be Removed	Undersize Tree	Existing Tree in Poor/Dead Condition	Tree Protection Fencing



Note: If the tree is on an adjacent property, the drip line must still be protected on your side of the property line. If the branches have been cut or pruned, the TPZ must protect the original drip line of the tree (Fig. 1b).

Tree Protection Distance Table

*Minimum Protection Required Around Tree

Tree Height (m)	Tree Diameter (cm)	Tree Age (years)	Tree Species	Tree Species	Tree Species	Tree Species
30	8	0.8	1.3	3.9	2.90	8.5
25	10	0.8	1.3	4.9	3.35	10.7
30	12	1.0	1.5	6.3	3.90	12.8
35	14	1.2	2.1	8.9	4.85	14.9
40	18	1.3	2.4	7.9	8.39	17.1
45	18	1.5	3.7	8.9	8.88	19.2
60	30	1.7	3.8	9.8	9.86	21.3
66	22	1.8	3.3	10.8	7.16	23.5
60	24	2.0	3.8	11.8	7.29	29.6
75	30	2.5	4.4	14.8	8.78	32.0
80	30	3.0	6.0	15.4	10.96	38.8
100	40	3.3	6.8	19.7	13.00	42.7

Tree Protection Zone Signage
 All TPZ are required to have signage as shown in Fig. 2. The signage must be a minimum of 11"x14" in size on at least 2 sides. A sign is now available for download from the City of Richmond's Tree Bylaw webpage at: www.richmond.ca/sustainability/environmets/removal.htm



For Tree Protection Barrier inspection requests and inquiries call 604-247-6584.
 NOTE: Failure to maintain tree protection barriers may result in fines of up to \$10,000.00 per offence.

Fig. 2 - Tree Protection Zone Sign

SECTIONS

