



11191 Twiggy Place Barge Ramp

WeaverTech
Science - Construction - Engineering



Arin Yeomans-Routledge,
R.P.Bio., QEP.

Project Outline

▶ Permitting

- ▶ DFO Authorization
- ▶ Transport Canada
- ▶ WSA Approval
- ▶ Crown Lands
- ▶ City of Richmond
- ▶ Disposal At Sea

Development Permit Application Application No. DP 21-944169

11191 Twigg Pl., Richmond BC

The City of Richmond has received an application to construct a barge ramp and material transloading facility. Works shall include habitat offsetting and marsh and riparian habitat enhancements.

Applicant: 1068800 BC Ltd.
Contact: 250-816-8085

richmond.ca



Public Input:

Input on the application may be received throughout the process up to and including the Development Permit Panel.

Project milestones



For more information please contact:

Planning and Development
Department
Richmond City Hall
6911 No. 3 Road
604-276-4395
DevApps@richmond.ca

▶ Works

- ▶ Barge ramp construction
- ▶ Foreshore raising
- ▶ Riparian planting



Permitting Stages

▶ **DFO Authorization**

- ▶ Completed and approved

▶ **Transport Canada**

- ▶ Completed and approved

▶ **Water Sustainability Act (WSA)**

- ▶ Nearly complete – requiring BC Crown Lands to review the file

▶ **Crown Lands**

- ▶ Review and First Nations engagement complete
- ▶ Undergoing final review

▶ **City of Richmond**

- ▶ In progress

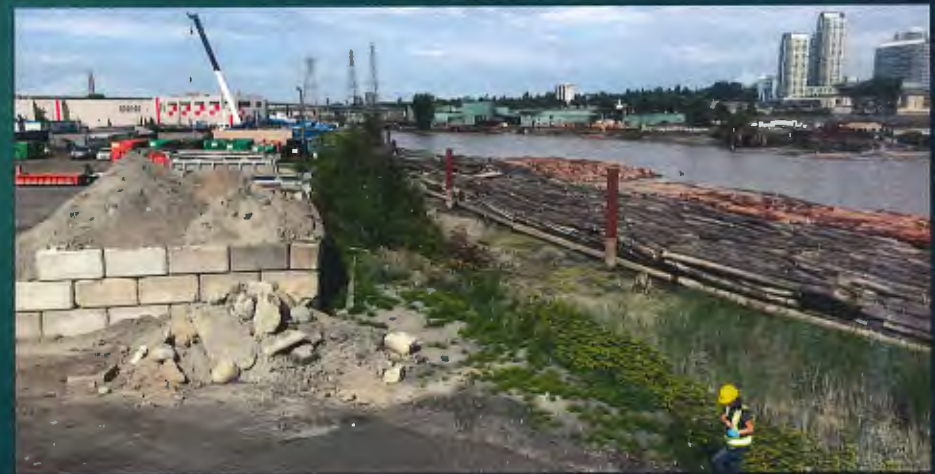
▶ **Disposal at Sea**

- ▶ Preliminary review complete – awaiting approval



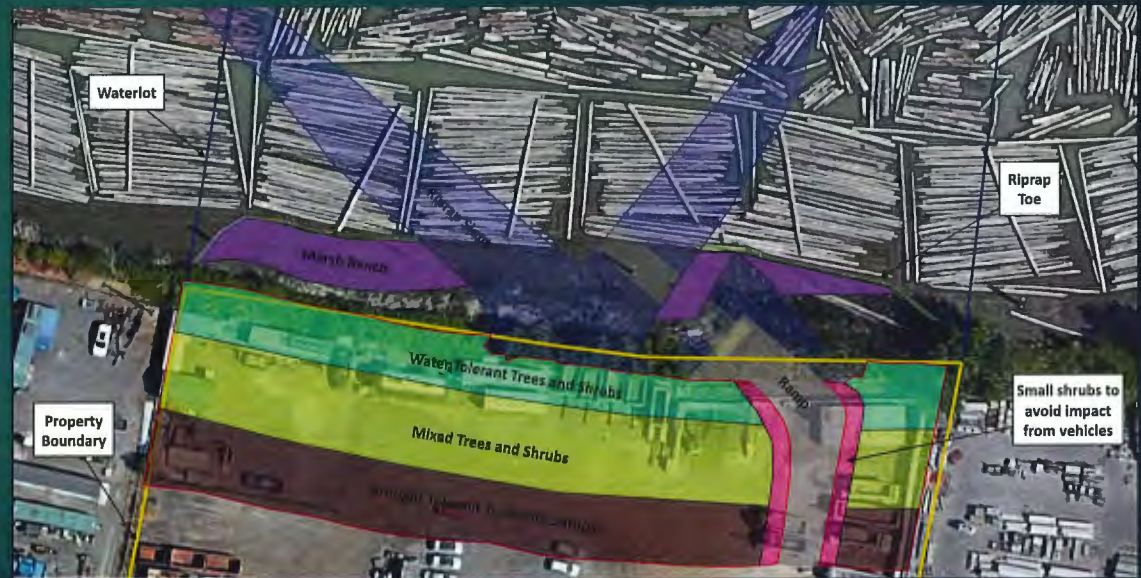
Environmentally Sensitive Areas

- ▶ The works are set to take place within one of the City of Richmond's Environmentally Sensitive Areas (ESA).
- ▶ The foreshore within this ESA is to be raised as per the flood prevention guidelines by the City.
- ▶ Planting is to occur within this raised foreshore and marsh habitat to offset any losses

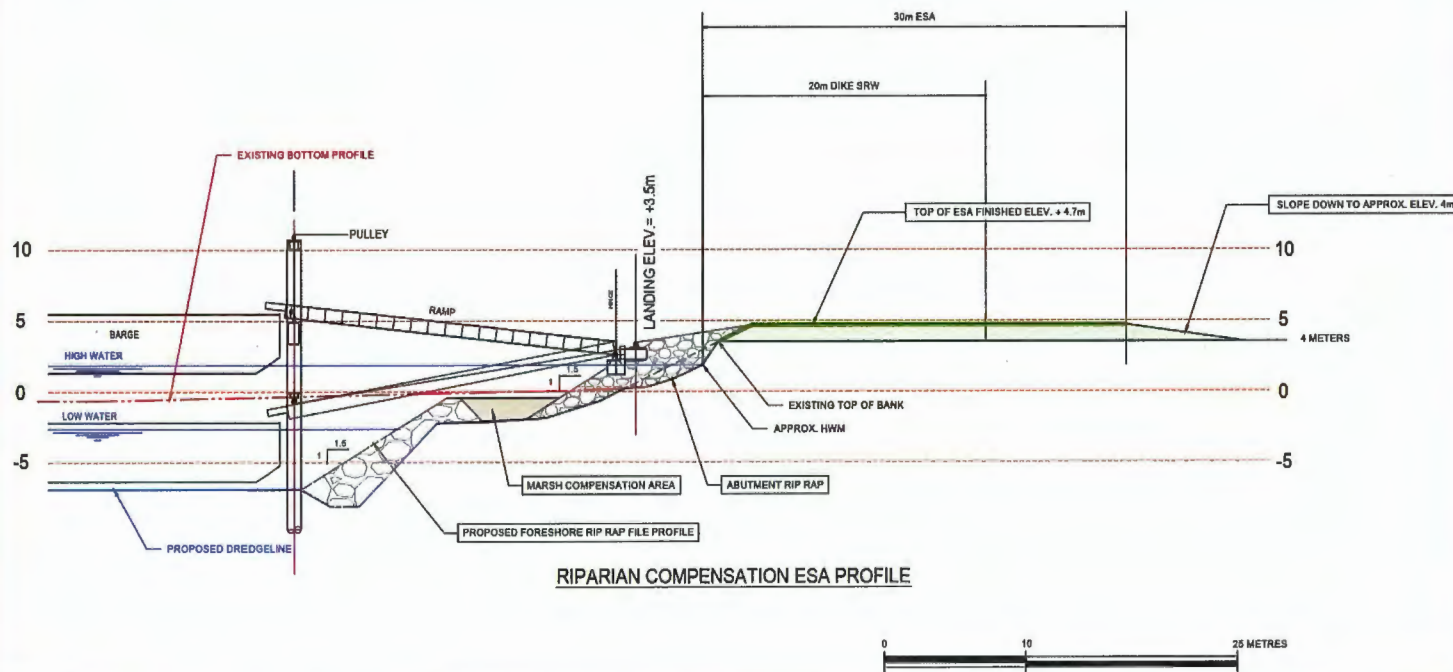


Environmentally Sensitive Areas

- ▶ Riparian planting is to occur on approximately 3,000 m² of habitat and will include four main sections
 - ▶ Water-tolerant trees and shrubs nearest the foreshore
 - ▶ Drought-tolerant trees and shrubs furthest from the foreshore
 - ▶ Mixed trees and shrubs between the above two planting areas
 - ▶ Low-lying shrubs near the ramp
- ▶ Approximately 360 m² of marsh habitat is to be added to the foreshore.



Environmentally Sensitive Areas



The habitat compensation ratio (1.4 : 1) will result in a net gain of **245 m²** of high-value habitat once works are complete and the vegetation is well established.

Closing

- ▶ Refer to the following Weaver Tech reports for more information:
 - ▶ *Project Effects Assessment and Management Plan: Barge Ramp Installation, Mitchell Island V4*
 - ▶ *Mitchell Island Barge Ramp Habitat Offsetting Plan: Planting and Effectiveness Monitoring Measures V4*
- ▶ Arin Yeomans-Routledge, Weaver Tech, R.P.Bio
 - ▶ arin@weavertech.com ; 250-816-8085

