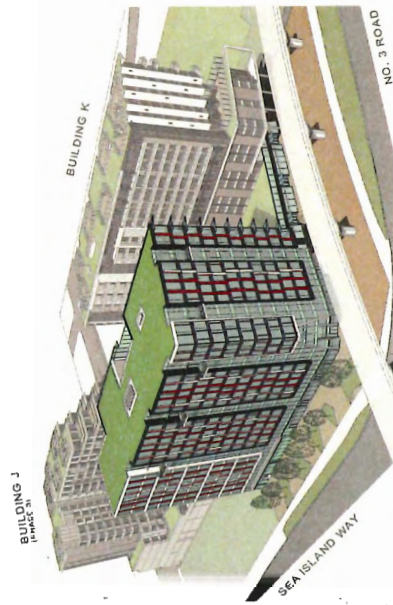


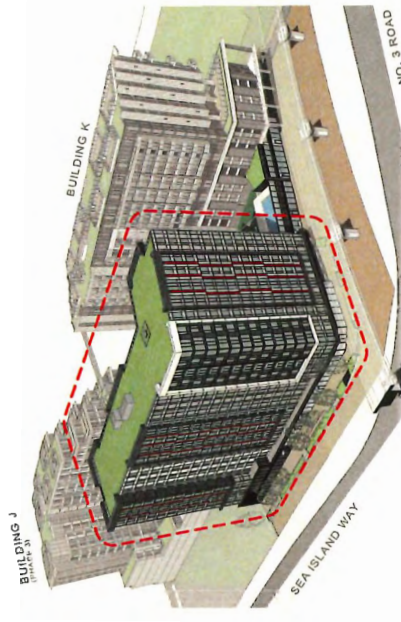
Schedule 2 to the Minutes of the Development Permit Panel meeting held on Thursday, September 12, 2024

**PINNACLE CENTRE
@ CAPSTAN VILLAGE: PHASE 4
BUILDING 'L' CHANGE OF USE AND RE-DESIGN**
3200 No. 3 Rd. Richmond BC

**DP 24-012258
DP Panel Presentation: Sep. 12, 2024**



APPROVED OFFICE USE
DP 18-421292

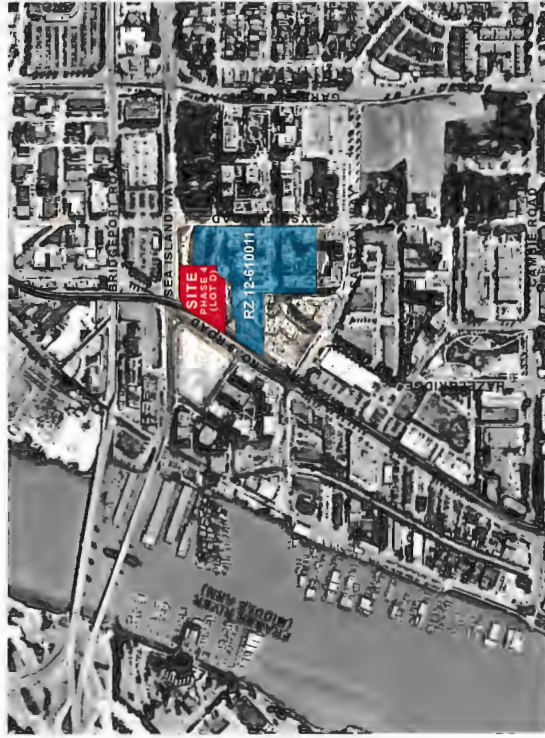


PROPOSED HOTEL USE
DP 24-012258

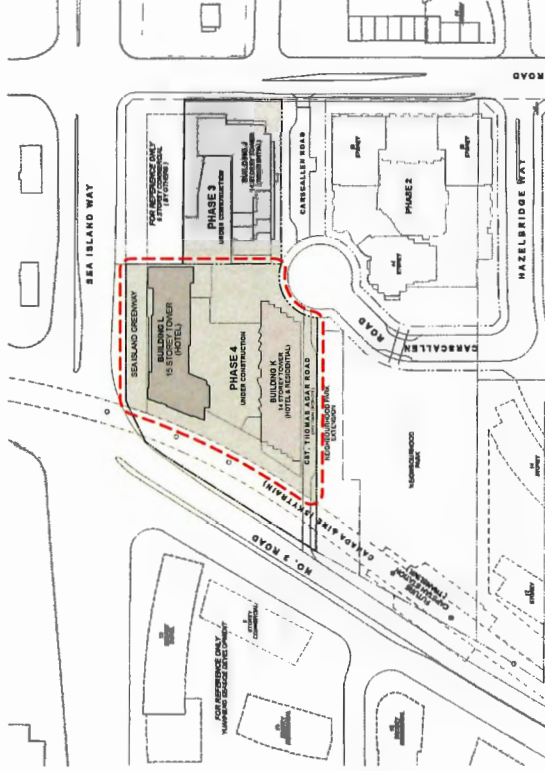
DP 24-012258
DP Panel Presentation: Sep 12, 2024

PINNACLE CENTRE @ CAPSTAN VILLAGE: PHASE 4
Building 'L' Change of Use & Redesign
3200 No. 3 Road, Richmond BC
for: Pinnacle Living (Capstan Village) Lands Inc.

bingham hill



LOCATION MAP



CONTEXT PLAN

LOCATION PLAN

PINNACLE CENTRE @ CAPSTAN VILLAGE: PHASE 4
 Building 'L' Change of Use & Redesign
 3200 No. 3 Road, Richmond BC
 for: Pinnacle Living (Capstan Village) Lands Inc.



DP 24-012258
 DP Panel Presentation: Sep 12, 2024





VIEW FROM SEBASTIAN & SEA ISLAND WAY



VIEW FROM NO. 3 ROAD & SEA ISLAND WAY



VIEW FROM NO. 3 ROAD LOOKING NORTH



VIEW FROM NO. 3 ROAD LOOKING SOUTH



VIEW FROM NO. 3 ROAD LOOKING NORTH



VIEW FROM NO. 3 ROAD LOOKING SOUTH

CONTEXT / STREETVIEW

PINNACLE CENTRE @ CAPSTAN VILLAGE: PHASE 4
 Building 'L' Change of Use & Redesign
 3200 No. 3 Road, Richmond BC
 for: Pinnacle Living (Capstan Village) Lands Inc.

DP 24-012258
 DP Panel Presentation: Sep 12, 2024

b i n g h a m . h i l l
 ARCHITECT



PHASE 4: BUILDING K
August 28, 2024



PHASE 4: BUILDING L
August 28, 2024



PHASE 3
August 28, 2024



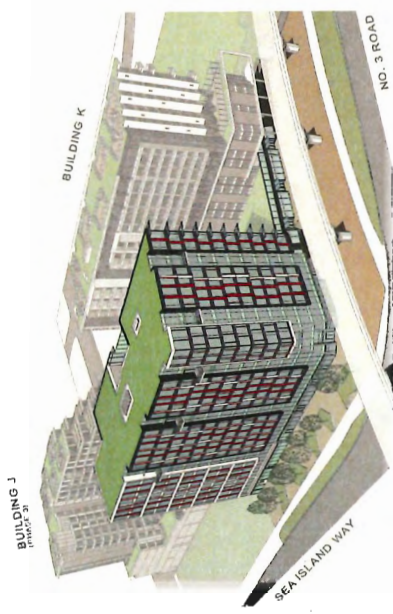
PHASE 3
August 28, 2024

CURRENT SITE CONDITION

PINNACLE CENTRE @ CAPSTAN VILLAGE: PHASE 4
Building 'L' Change of Use & Redesign
 3200 No. 3 Road, Richmond BC
 for: Pinnacle Living (Capstan Village) Lands Inc.

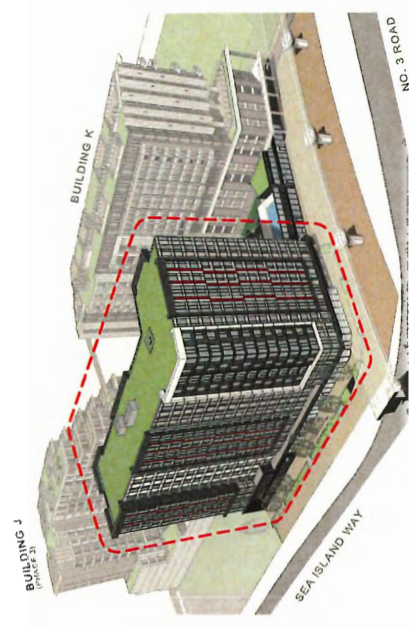
DP 24-012258
 DP Panel Presentation: Sep 12, 2024





APPROVED OFFICE USE
DP-18-421292

ZONING BYLAW:	ZMU25
SECONDARY USES:	OFFICE
GROSS FLOOR AREA:	26,878.9 m ²
BUILDING HEIGHT:	47.0m
NO. STOREYS:	12

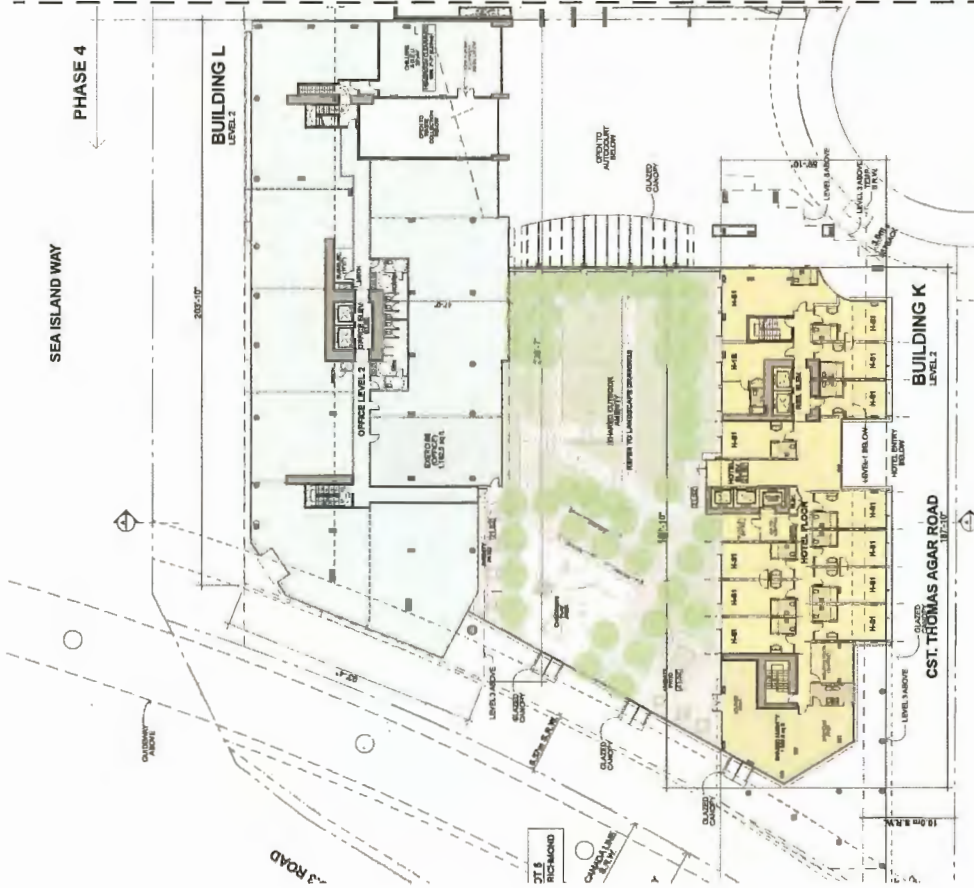


PROPOSED HOTEL USE
DP-24-012258

ZONING BYLAW:	ZMU25
SECONDARY USES:	HOTEL
GROSS FLOOR AREA:	26,878.9 m ²
BUILDING HEIGHT:	47.0m
NO. STOREYS:	15
NO. HOTEL SUITES:	315

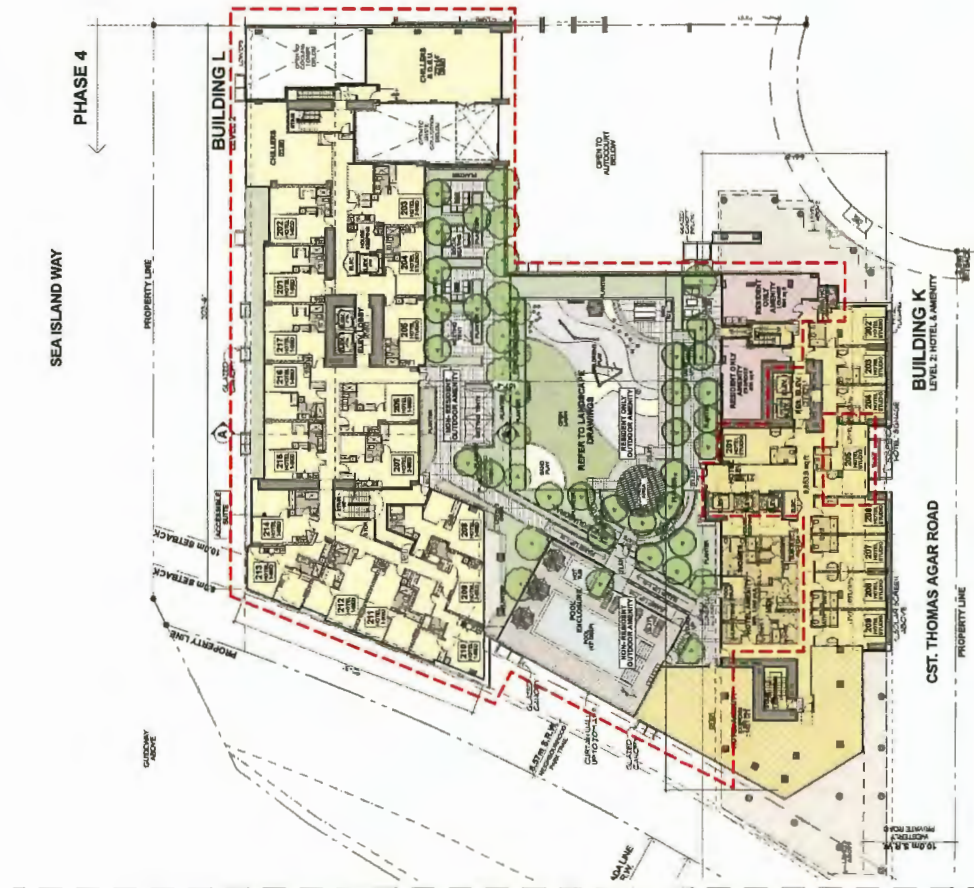
SUMMARY STATISTICS

PINNACLE CENTRE @ CAPSTAN VILLAGE: PHASE 4
Building 'L' Change of Use & Redesign
 3200 No. 3 Road, Richmond BC
 for: Pinnacle Living (Capstan Village) Lands Inc.



- FLOOR AREA DESIGNATION**
- RESIDENTIAL - MARKET
 - RESIDENTIAL - MARKET & HOUSING
 - RESIDENTIAL - MARKET BULK
 - RESIDENTIAL - HOODS/AMENITY
 - NON-RESIDENTIAL, OFFICE/RETAIL
 - NON-RESIDENTIAL, HOODS/AMENITY
 - NON-RESIDENTIAL, HOTEL
 - NON-RESIDENTIAL, HOODS/AMENITY

LEVEL 2
APPROVED OFFICE USE
DP 18-02152E



- FLOOR AREA DESIGNATION**
- RESIDENTIAL - MARKET
 - RESIDENTIAL - MARKET & HOUSING
 - RESIDENTIAL - MARKET BULK
 - RESIDENTIAL - HOODS/AMENITY
 - NON-RESIDENTIAL, OFFICE/RETAIL
 - NON-RESIDENTIAL, HOODS/AMENITY
 - NON-RESIDENTIAL, HOTEL
 - NON-RESIDENTIAL, HOODS/AMENITY

LEVEL 2
INDICATES EXTENT OF
REVISIONS ASSOCIATED
WITH NEW DP APPLICATION

LEVEL 2
PROPOSED HOTEL USE
DP 24-012258

DP Panel Presentation: Sep 12, 2024
DP 24-012258

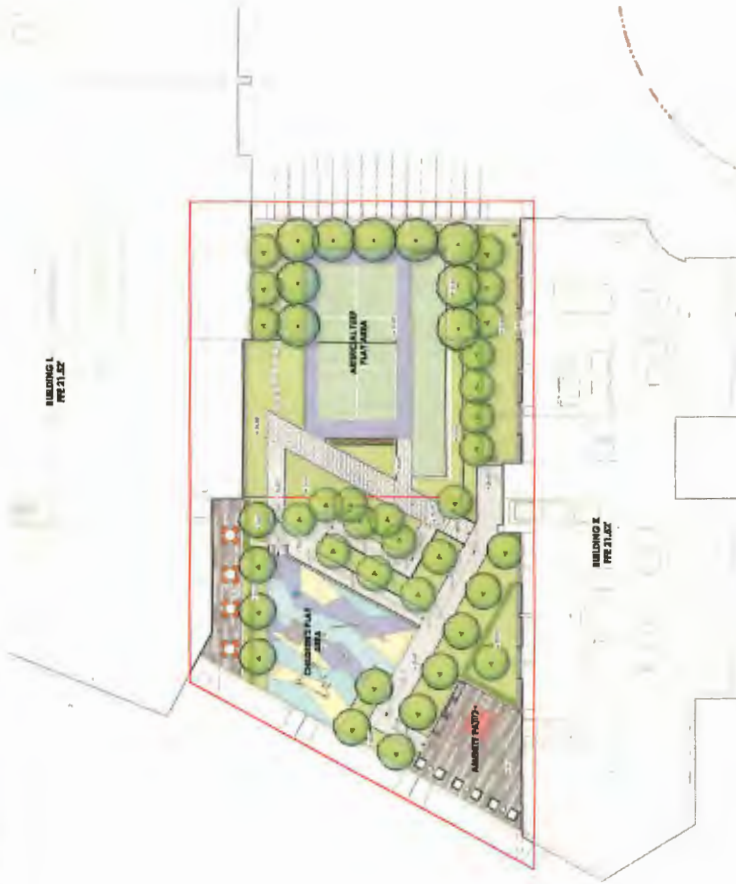


PINNACLE CENTRE @ CAPSTAN VILLAGE: PHASE 4
Building 'L' Change of Use & Redesign
3200 No. 3 Road, Richmond BC
for: Pinnacle Living (Capstan Village) Lands Inc.

LEVEL 2

**CAPSTAN VILLAGE
PHASE 4 - LEVEL 2**

**APPROVED
DP APPLICATION 2020**








**NEW
DP APPLICATION 2024**



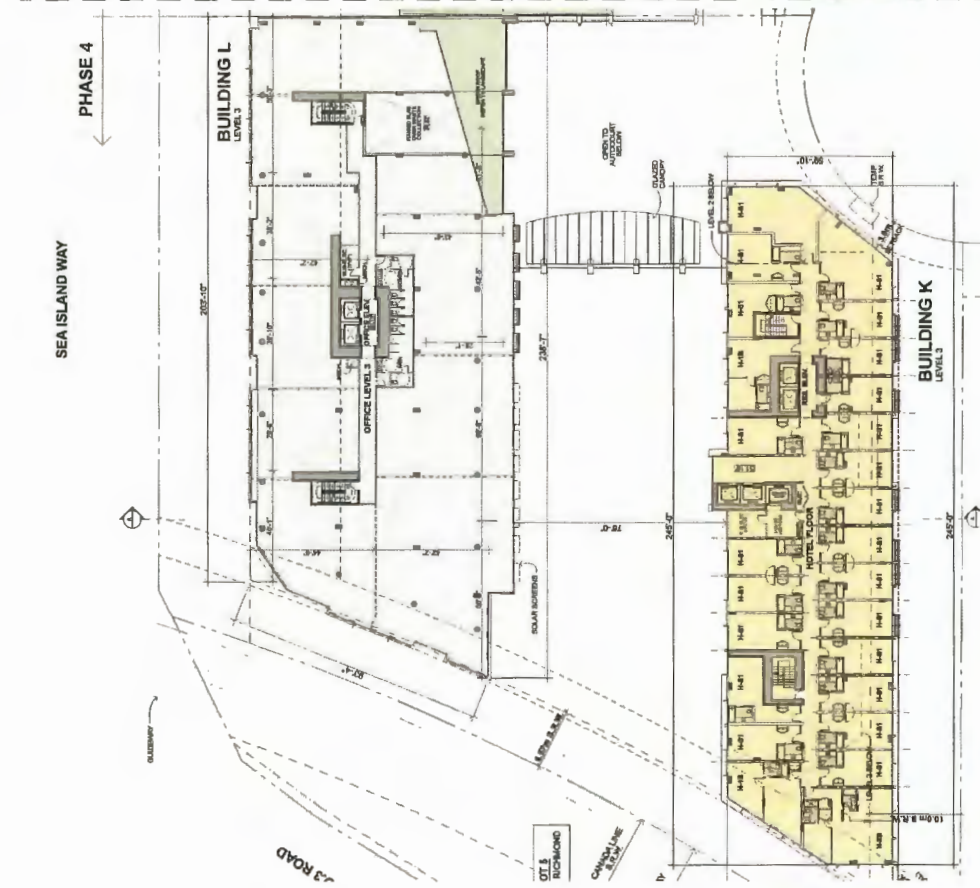
PROPOSED REVISIONS:

- 1.** THE FLOOR PLAN OF BUILDING L IS REDUCED IN SIZE TO ACCOMMODATE THE CHANGE-OF-USE FROM OFFICE TO HOTEL, RESULTING IN AN EXPANDED OUTDOOR AMENITY SPACE.
- 2.** THE EXPANDED OUTDOOR AMENITY ALLOWS FOR THE PROVISION OF A SEPARATE, DEDICATED OUTDOOR AMENITY FOR THE USE OF RESIDENTS ONLY.
- 3.** ARTIFICIAL LAWN SPORTS AREA CHANGED TO RESIDENTIAL ONLY CHILDREN'S PLAY AREA AND ACTIVITY SPACE.
- 4.** SWIMMING POOL ADDED TO NON-RESIDENTIAL (HOTEL) OUTDOOR AMENITY.

SOFTSCAPE LEGEND

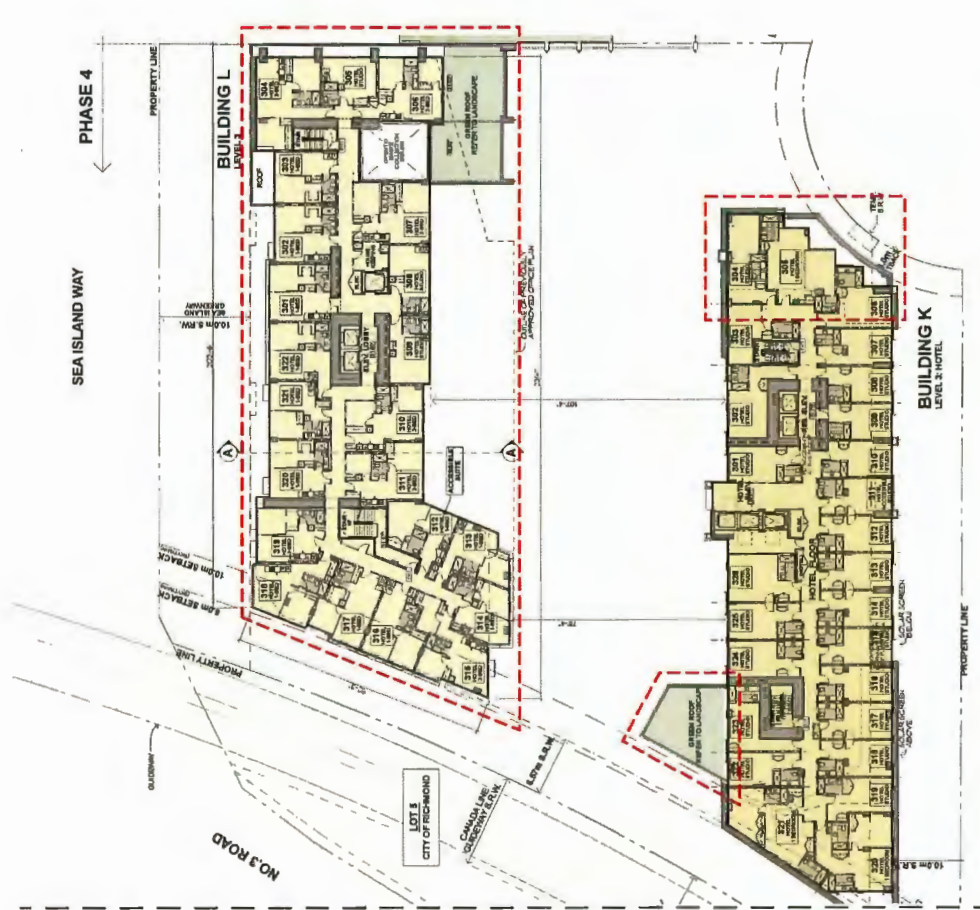
-  SHRUB PLANTING
-  HEDGE PLANTING
-  ARTIFICIAL TURF
-  OPEN LAWN
-  SAND

OUTDOOR AMENITY IS SHARED BETWEEN HOTEL GUESTS AND RESIDENTS.



- FLOOR AREA DESIGNATION**
- RESIDENTIAL - MARKET
 - RESIDENTIAL - AFFORDABLE HOUSING
 - RESIDENTIAL - MARKET LU/LA
 - RESIDENTIAL - INDOOR AMENITY
 - NON-RESIDENTIAL - OFFICE/RETAIL
 - NON-RESIDENTIAL - INDOOR AMENITY
 - NON-RESIDENTIAL - HOTEL
 - NON-RESIDENTIAL - INDOOR AMENITY

LEVEL 3
APPROVED OFFICE USE
DP 19-01254



- FLOOR AREA DESIGNATION**
- RESIDENTIAL - MARKET
 - RESIDENTIAL - AFFORDABLE HOUSING
 - RESIDENTIAL - MARKET LU/LA
 - RESIDENTIAL - INDOOR AMENITY
 - NON-RESIDENTIAL - OFFICE/RETAIL
 - NON-RESIDENTIAL - INDOOR AMENITY
 - NON-RESIDENTIAL - HOTEL
 - NON-RESIDENTIAL - INDOOR AMENITY

LEVEL 3
HOTEL USE
DP 24-01258

SEA ISLAND WAY

PHASE 4

PROPERTY LINE

BUILDING L

BUILDING K

LOT 1 CITY OF RICHMOND

NO. 3 ROAD

SEA ISLAND WAY

PHASE 4

PROPERTY LINE

BUILDING L

BUILDING K

LOT 1 CITY OF RICHMOND

NO. 3 ROAD

SEA ISLAND WAY

PHASE 4

PROPERTY LINE

DP Panel Presentation: Sep 12, 2024

DP 24-012258

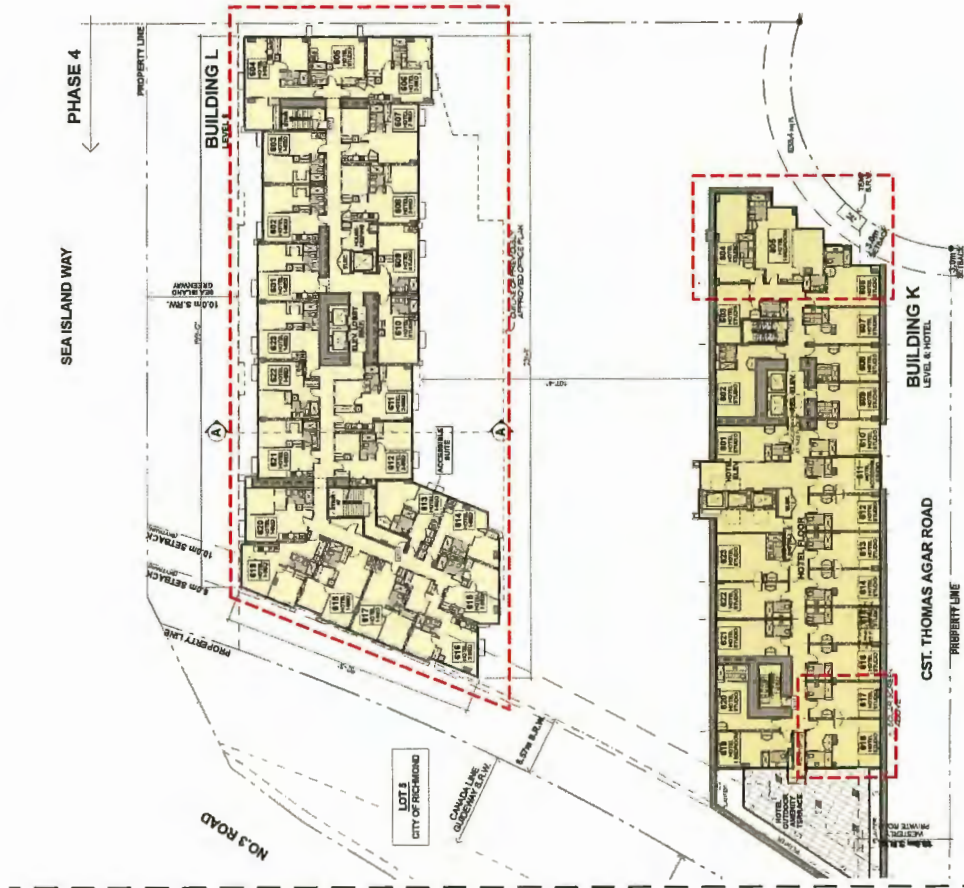
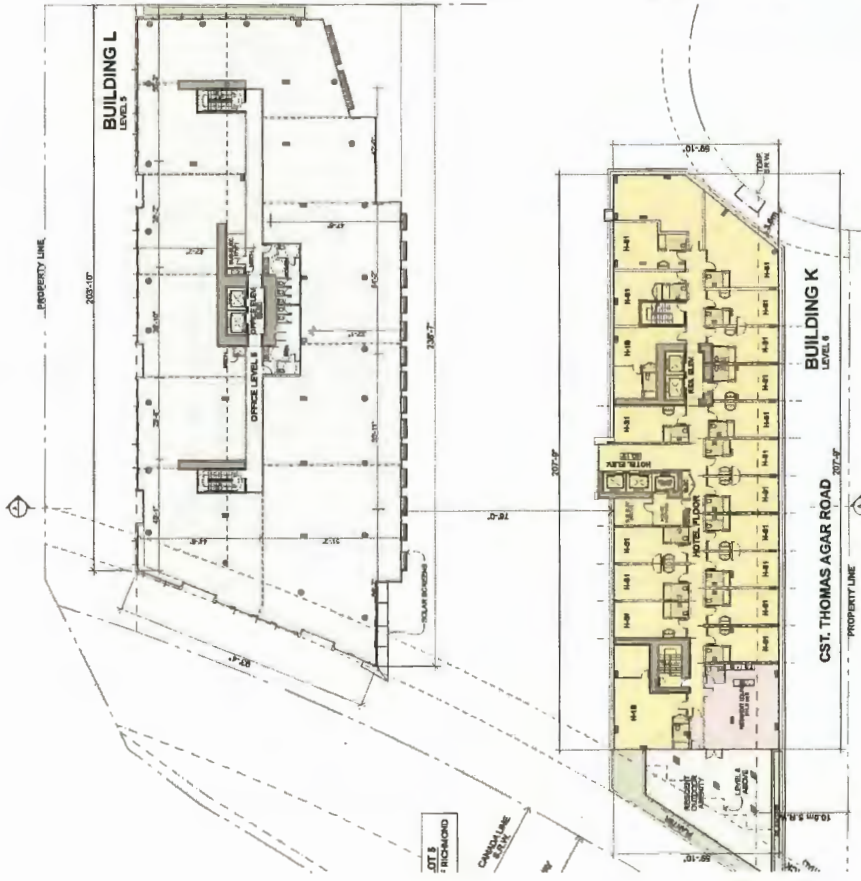


PINNACLE CENTRE @ CAPSTAN VILLAGE: PHASE 4
Building 'L' Change of Use & Redesign
3200 No. 3 Road, Richmond BC
for: Pinnacle Living (Capstan Village) Lands Inc.

SEA ISLAND WAY

SEA ISLAND WAY

PHASE 4



- FLOOR AREA DESIGNATION
- RESIDENTIAL - MARKET
 - RESIDENTIAL - AFFORDABLE HOUSING
 - RESIDENTIAL - MARKET B U.K.
 - RESIDENTIAL - MARKET A
 - NON-RESIDENTIAL OFFICE/RETAIL
 - NON-RESIDENTIAL INDOOR AMENITY
 - NON-RESIDENTIAL HOTEL
 - NON-RESIDENTIAL INDOOR AMENITY

LEVEL 6
APPROVED OFFICE USE
DP-18-02152

INDICATES EXTENT OF
REVISIONS ASSOCIATED
WITH NEW DP APPLICATION

LEVEL 6
PROPOSED HOTEL USE
DP-24-012258



DP 24-012258

DP Panel Presentation: Sep 12, 2024

PINNACLE CENTRE @ CAPSTAN VILLAGE: PHASE 4
Building 'L' Change of Use & Redesign
 3200 No. 3 Road, Richmond BC

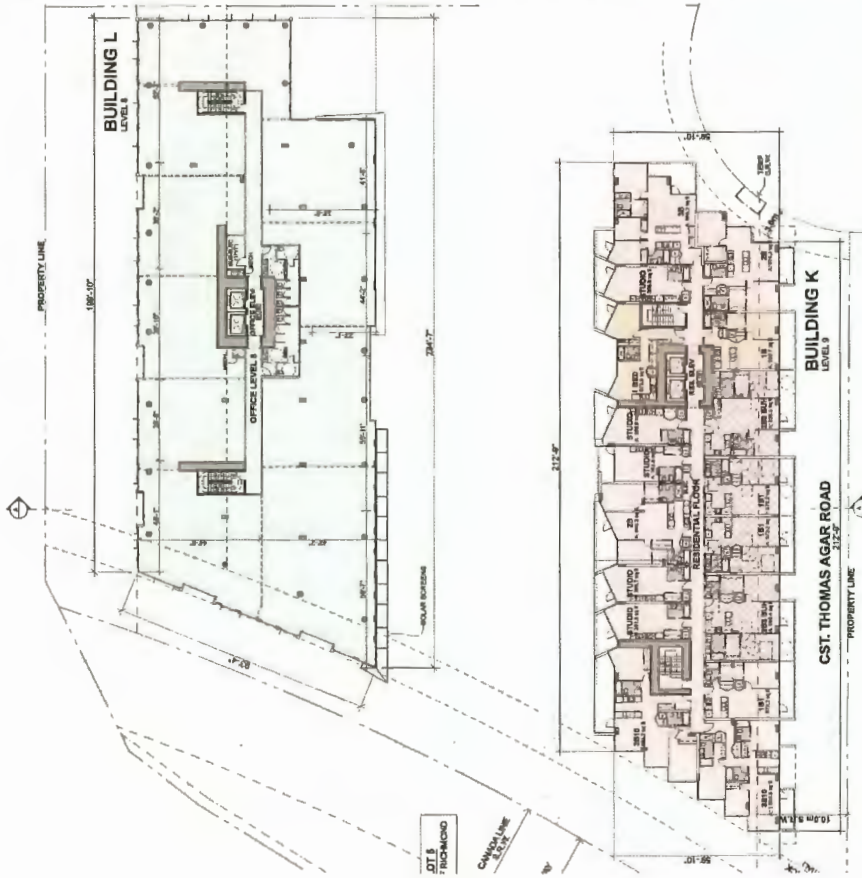
for: Pinnacle Living (Capstan Village) Lends Inc.

bingham hill
 ARCHITECT

9

LEVEL 6

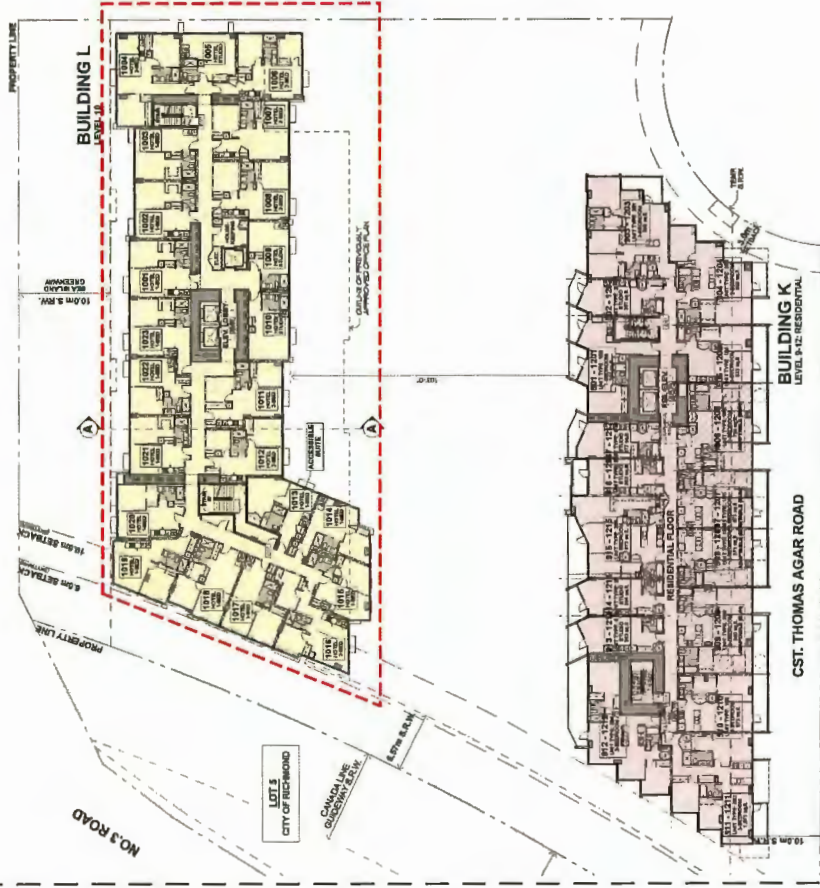
SEA ISLAND WAY



- FLOOR AREA DESIGNATION**
- RESIDENTIAL - MARKET
 - RESIDENTIAL - AFFORDABLE HOUSING
 - RESIDENTIAL - MARKET FLTH
 - RESIDENTIAL - INDOOR AMENITY
 - NON-RESIDENTIAL OFFICE/RETAIL
 - NON-RESIDENTIAL INDOOR AMENITY
 - NON-RESIDENTIAL HOTEL
 - NON-RESIDENTIAL INDOOR AMENITY

LEVEL 9 & 8
 APPROVED OFFICE USE
 DP 14-421262

SEA ISLAND WAY



- FLOOR AREA DESIGNATION**
- RESIDENTIAL - MARKET
 - RESIDENTIAL - AFFORDABLE HOUSING
 - RESIDENTIAL - MARKET FLTH
 - RESIDENTIAL - INDOOR AMENITY
 - NON-RESIDENTIAL OFFICE/RETAIL
 - NON-RESIDENTIAL INDOOR AMENITY
 - NON-RESIDENTIAL HOTEL
 - NON-RESIDENTIAL INDOOR AMENITY

LEVEL 9 & 10
 PROPOSED HOTEL USE
 DP 24-012258



DP 24-012258
 DP Panel Presentation: Sep 12, 2024

10

bingham-hill
 architect
 3200 No. 3 Road, Richmond BC
 (604) 273-8888

PINNACLE CENTRE @ CAPSTAN VILLAGE: PHASE 4
 Building 'L' Change of Use & Redesign
 3200 No. 3 Road, Richmond BC
 for: Pinnacle Living (Capstan Village) Lands Inc.

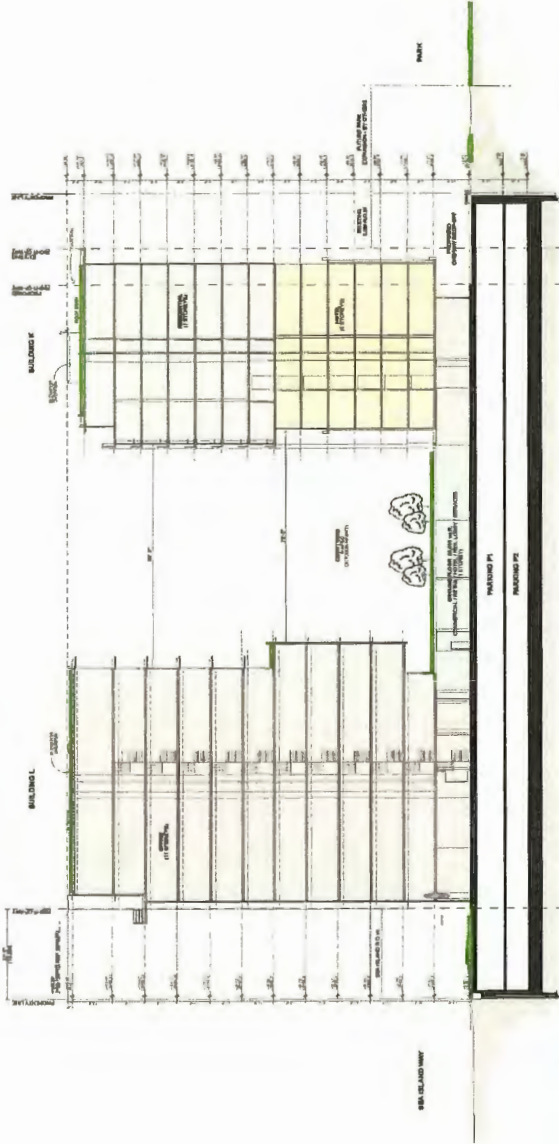


DP 24-012258
DP Panel Presentation: Sep 12, 2024

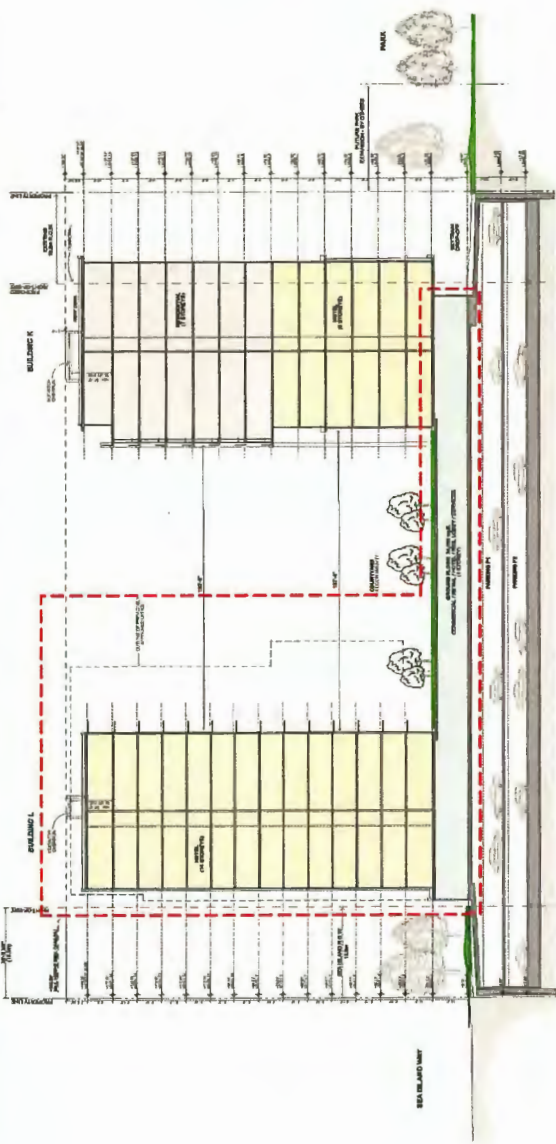
bingham hill
ARCHITECTS
3200 No. 3 Road, Richmond BC
V6X 3E9
TEL: 604.273.1111
WWW.BINGHAMHILL.COM

PINNACLE CENTRE @ CAPSTAN VILLAGE: PHASE 4
Building 'L' Change of Use & Redesign
3200 No. 3 Road, Richmond BC
for: Pinnacle Living (Capstan Village) Lands Inc.

ROOF



SECTION A
APPROVED OFFICE USE
DP 18-421232



INDICATES EXTENT OF REVISIONS ASSOCIATED WITH NEW DP APPLICATION

SECTION A
PROPOSED HOTEL USE
DP 24-012258

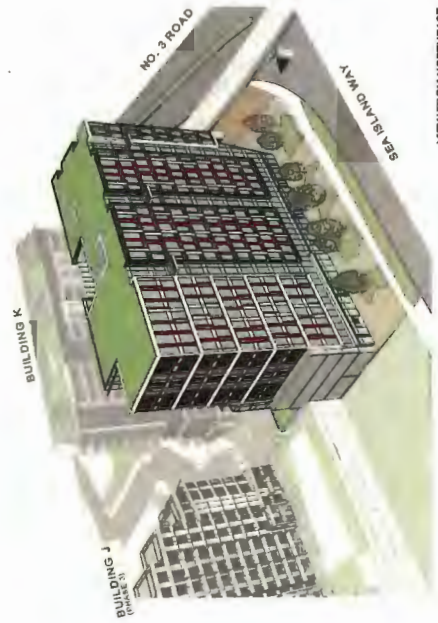
SECTION A

DP 24-012258
DP Panel Presentation: Sep 12, 2024

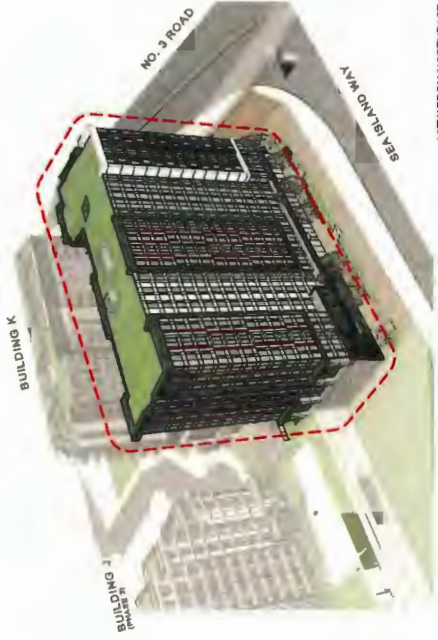
PINNACLE CENTRE @ CAPSTAN VILLAGE: PHASE 4
Building 'L' Change of Use & Redesign
3200 No. 3 Road, Richmond BC

for: Pinnacle Living (Capstan Village) Lands Inc.

bingham-hill
architect



VIEW FROM NORTHEAST

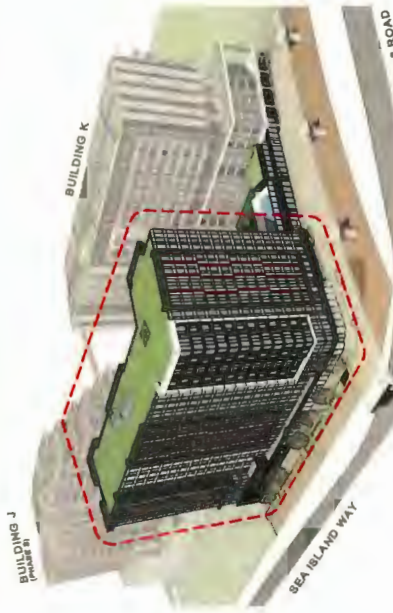


VIEW FROM NORTHEAST



VIEW FROM NORTHWEST

APPROVED OFFICE USE
DP 14-01292



VIEW FROM NORTHWEST

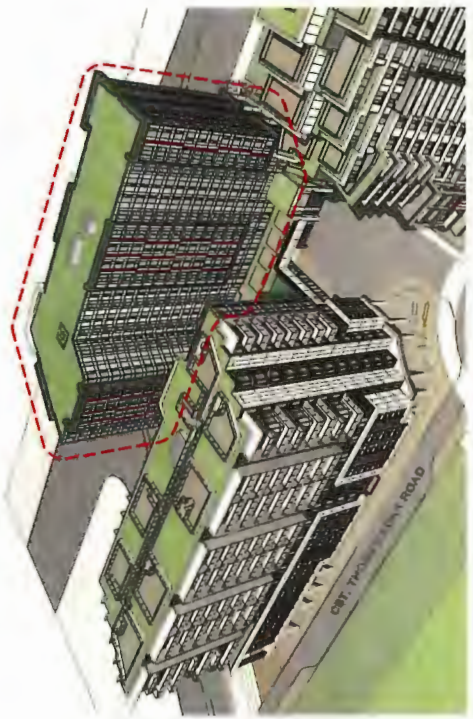
PROPOSED HOTEL USE
DP 24-012258

3D IMAGES

DP 24-012258
DP Panel Presentation: Sep 12, 2024

PINNACLE CENTRE @ CAPSTAN VILLAGE: PHASE 4
Building 'L' Change of Use & Redesign
 3200 No. 3 Road, Richmond BC
 for: Pinnacle Living (Capstan Village) Lands Inc.

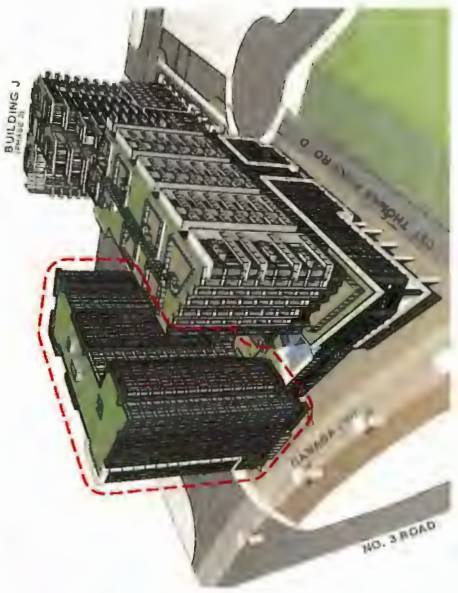
b i n g h a m - h i l l



VIEW FROM SOUTHEAST



VIEW FROM SOUTHEAST



VIEW FROM SOUTHWEST

PROPOSED HOTEL USE
DP 24-012258

BUILDING K



VIEW FROM SOUTHWEST

APPROVED OFFICE USE
DP 18-021291

3D IMAGES

PINNACLE CENTRE @ CAPSTAN VILLAGE: PHASE 4
Building 'L' Change of Use & Redesign
 3200 No. 3 Road, Richmond BC
 for: Pinnacle Living (Capstan Village) Lands Inc.

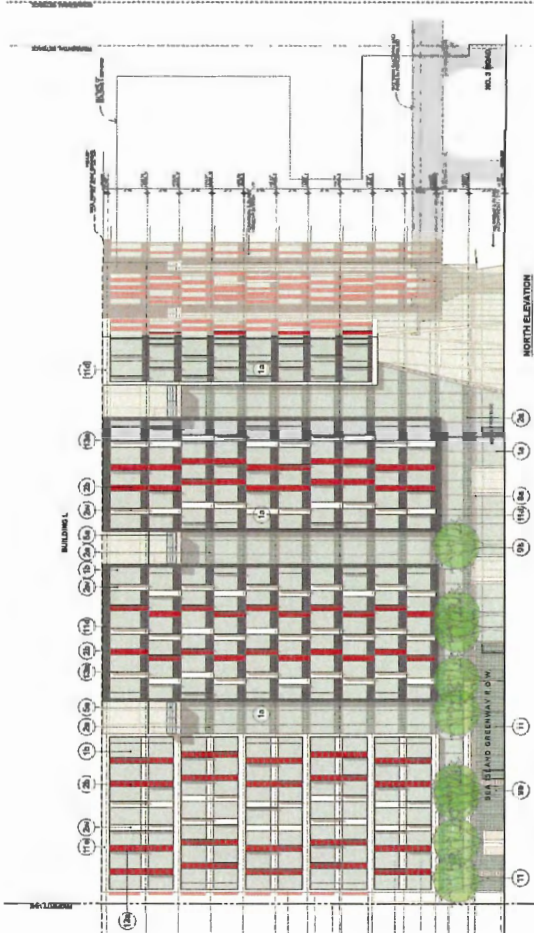
DP 24-012258
 DP Panel Presentation: Sep 12, 2024



LIST OF MATERIALS

1. ALUMINUM PANELS
 1.1. 1000 Series Aluminum Panel
 1.2. 1000 Series Aluminum Panel
 1.3. 1000 Series Aluminum Panel
2. ALUMINUM CURTAIN WALL
 2.1. 1000 Series Aluminum Panel
 2.2. 1000 Series Aluminum Panel
 2.3. 1000 Series Aluminum Panel
3. GLASS
 3.1. 1000 Series Aluminum Panel
 3.2. 1000 Series Aluminum Panel
 3.3. 1000 Series Aluminum Panel
4. METAL
 4.1. 1000 Series Aluminum Panel
 4.2. 1000 Series Aluminum Panel
 4.3. 1000 Series Aluminum Panel
5. CONCRETE
 5.1. 1000 Series Aluminum Panel
 5.2. 1000 Series Aluminum Panel
 5.3. 1000 Series Aluminum Panel
6. BRICK
 6.1. 1000 Series Aluminum Panel
 6.2. 1000 Series Aluminum Panel
 6.3. 1000 Series Aluminum Panel
7. STONE
 7.1. 1000 Series Aluminum Panel
 7.2. 1000 Series Aluminum Panel
 7.3. 1000 Series Aluminum Panel
8. TERRAZZO
 8.1. 1000 Series Aluminum Panel
 8.2. 1000 Series Aluminum Panel
 8.3. 1000 Series Aluminum Panel
9. CERAMIC
 9.1. 1000 Series Aluminum Panel
 9.2. 1000 Series Aluminum Panel
 9.3. 1000 Series Aluminum Panel
10. CARPET
 10.1. 1000 Series Aluminum Panel
 10.2. 1000 Series Aluminum Panel
 10.3. 1000 Series Aluminum Panel
11. PAINT
 11.1. 1000 Series Aluminum Panel
 11.2. 1000 Series Aluminum Panel
 11.3. 1000 Series Aluminum Panel
12. OTHER
 12.1. 1000 Series Aluminum Panel
 12.2. 1000 Series Aluminum Panel
 12.3. 1000 Series Aluminum Panel

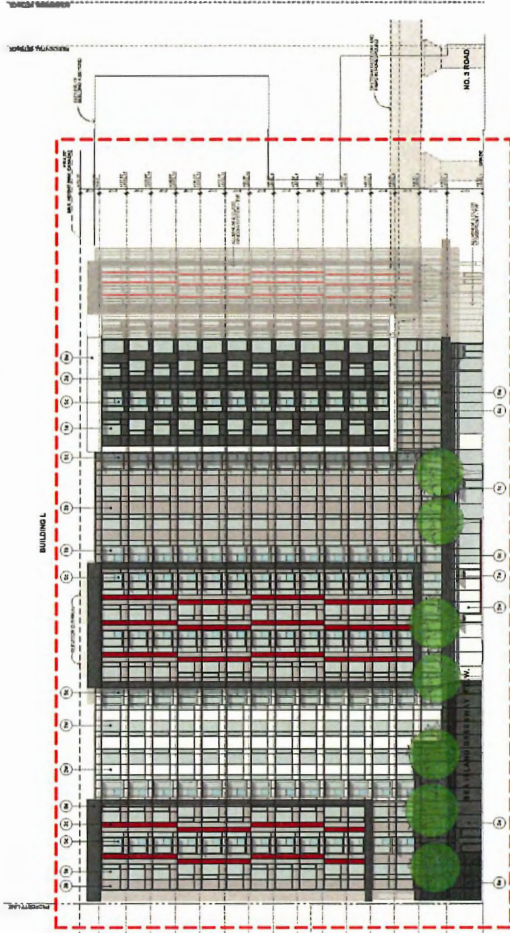
NORTH ELEVATION
 APPROVED OFFICE USE
 DP-18-047282



LIST OF MATERIALS

1. ALUMINUM PANELS
 1.1. 1000 Series Aluminum Panel
 1.2. 1000 Series Aluminum Panel
 1.3. 1000 Series Aluminum Panel
2. ALUMINUM CURTAIN WALL
 2.1. 1000 Series Aluminum Panel
 2.2. 1000 Series Aluminum Panel
 2.3. 1000 Series Aluminum Panel
3. GLASS
 3.1. 1000 Series Aluminum Panel
 3.2. 1000 Series Aluminum Panel
 3.3. 1000 Series Aluminum Panel
4. METAL
 4.1. 1000 Series Aluminum Panel
 4.2. 1000 Series Aluminum Panel
 4.3. 1000 Series Aluminum Panel
5. CONCRETE
 5.1. 1000 Series Aluminum Panel
 5.2. 1000 Series Aluminum Panel
 5.3. 1000 Series Aluminum Panel
6. BRICK
 6.1. 1000 Series Aluminum Panel
 6.2. 1000 Series Aluminum Panel
 6.3. 1000 Series Aluminum Panel
7. STONE
 7.1. 1000 Series Aluminum Panel
 7.2. 1000 Series Aluminum Panel
 7.3. 1000 Series Aluminum Panel
8. TERRAZZO
 8.1. 1000 Series Aluminum Panel
 8.2. 1000 Series Aluminum Panel
 8.3. 1000 Series Aluminum Panel
9. CERAMIC
 9.1. 1000 Series Aluminum Panel
 9.2. 1000 Series Aluminum Panel
 9.3. 1000 Series Aluminum Panel
10. CARPET
 10.1. 1000 Series Aluminum Panel
 10.2. 1000 Series Aluminum Panel
 10.3. 1000 Series Aluminum Panel
11. PAINT
 11.1. 1000 Series Aluminum Panel
 11.2. 1000 Series Aluminum Panel
 11.3. 1000 Series Aluminum Panel
12. OTHER
 12.1. 1000 Series Aluminum Panel
 12.2. 1000 Series Aluminum Panel
 12.3. 1000 Series Aluminum Panel

NORTH ELEVATION
 APPROVED OFFICE USE
 DP-18-047282



NORTH ELEVATION
 APPROVED OFFICE USE
 DP-18-047282

NORTH ELEVATION

DP 24-012258
 DP Panel Presentation: Sep 12, 2024

PINNACLE CENTRE @ CAPSTAN VILLAGE: PHASE 4
 Building 'L' Change of Use & Redesign
 3200 No. 3 Road, Richmond BC
 for: Pinnacle Living (Capstan Village) Lands Inc.



LIST OF MATERIALS

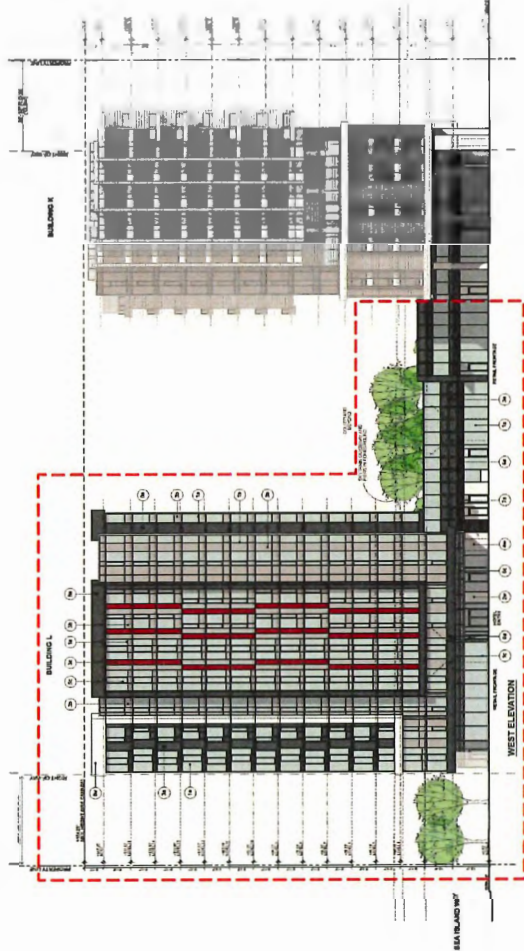
- 1. ALUMINUM SLAT PANELS
 1a - 1000mm x 1000mm x 10mm
 1b - 1000mm x 1000mm x 15mm
 1c - 1000mm x 1000mm x 20mm
- 2. ALUMINUM SLAT PANELS
 2a - 1000mm x 1000mm x 10mm
 2b - 1000mm x 1000mm x 15mm
 2c - 1000mm x 1000mm x 20mm
- 3. ALUMINUM SLAT PANELS
 3a - 1000mm x 1000mm x 10mm
 3b - 1000mm x 1000mm x 15mm
 3c - 1000mm x 1000mm x 20mm
- 4. ALUMINUM SLAT PANELS
 4a - 1000mm x 1000mm x 10mm
 4b - 1000mm x 1000mm x 15mm
 4c - 1000mm x 1000mm x 20mm
- 5. ALUMINUM SLAT PANELS
 5a - 1000mm x 1000mm x 10mm
 5b - 1000mm x 1000mm x 15mm
 5c - 1000mm x 1000mm x 20mm
- 6. ALUMINUM SLAT PANELS
 6a - 1000mm x 1000mm x 10mm
 6b - 1000mm x 1000mm x 15mm
 6c - 1000mm x 1000mm x 20mm
- 7. ALUMINUM SLAT PANELS
 7a - 1000mm x 1000mm x 10mm
 7b - 1000mm x 1000mm x 15mm
 7c - 1000mm x 1000mm x 20mm
- 8. ALUMINUM SLAT PANELS
 8a - 1000mm x 1000mm x 10mm
 8b - 1000mm x 1000mm x 15mm
 8c - 1000mm x 1000mm x 20mm
- 9. ALUMINUM SLAT PANELS
 9a - 1000mm x 1000mm x 10mm
 9b - 1000mm x 1000mm x 15mm
 9c - 1000mm x 1000mm x 20mm
- 10. ALUMINUM SLAT PANELS
 10a - 1000mm x 1000mm x 10mm
 10b - 1000mm x 1000mm x 15mm
 10c - 1000mm x 1000mm x 20mm
- 11. ALUMINUM SLAT PANELS
 11a - 1000mm x 1000mm x 10mm
 11b - 1000mm x 1000mm x 15mm
 11c - 1000mm x 1000mm x 20mm
- 12. ALUMINUM SLAT PANELS
 12a - 1000mm x 1000mm x 10mm
 12b - 1000mm x 1000mm x 15mm
 12c - 1000mm x 1000mm x 20mm
- 13. ALUMINUM SLAT PANELS
 13a - 1000mm x 1000mm x 10mm
 13b - 1000mm x 1000mm x 15mm
 13c - 1000mm x 1000mm x 20mm
- 14. ALUMINUM SLAT PANELS
 14a - 1000mm x 1000mm x 10mm
 14b - 1000mm x 1000mm x 15mm
 14c - 1000mm x 1000mm x 20mm
- 15. ALUMINUM SLAT PANELS
 15a - 1000mm x 1000mm x 10mm
 15b - 1000mm x 1000mm x 15mm
 15c - 1000mm x 1000mm x 20mm

WEST ELEVATION
 APPROVED OFFICE USE
 DP-18-021258



INDICATES EXTENT OF REVISIONS ASSOCIATED WITH NEW DP APPLICATION

WEST ELEVATION
 PROPOSED HOTEL USE
 DP-24-012258



LIST OF MATERIALS

- 1. ALUMINUM SLAT PANELS
 1a - 1000mm x 1000mm x 10mm
 1b - 1000mm x 1000mm x 15mm
 1c - 1000mm x 1000mm x 20mm
- 2. ALUMINUM SLAT PANELS
 2a - 1000mm x 1000mm x 10mm
 2b - 1000mm x 1000mm x 15mm
 2c - 1000mm x 1000mm x 20mm
- 3. ALUMINUM SLAT PANELS
 3a - 1000mm x 1000mm x 10mm
 3b - 1000mm x 1000mm x 15mm
 3c - 1000mm x 1000mm x 20mm
- 4. ALUMINUM SLAT PANELS
 4a - 1000mm x 1000mm x 10mm
 4b - 1000mm x 1000mm x 15mm
 4c - 1000mm x 1000mm x 20mm
- 5. ALUMINUM SLAT PANELS
 5a - 1000mm x 1000mm x 10mm
 5b - 1000mm x 1000mm x 15mm
 5c - 1000mm x 1000mm x 20mm
- 6. ALUMINUM SLAT PANELS
 6a - 1000mm x 1000mm x 10mm
 6b - 1000mm x 1000mm x 15mm
 6c - 1000mm x 1000mm x 20mm
- 7. ALUMINUM SLAT PANELS
 7a - 1000mm x 1000mm x 10mm
 7b - 1000mm x 1000mm x 15mm
 7c - 1000mm x 1000mm x 20mm
- 8. ALUMINUM SLAT PANELS
 8a - 1000mm x 1000mm x 10mm
 8b - 1000mm x 1000mm x 15mm
 8c - 1000mm x 1000mm x 20mm
- 9. ALUMINUM SLAT PANELS
 9a - 1000mm x 1000mm x 10mm
 9b - 1000mm x 1000mm x 15mm
 9c - 1000mm x 1000mm x 20mm
- 10. ALUMINUM SLAT PANELS
 10a - 1000mm x 1000mm x 10mm
 10b - 1000mm x 1000mm x 15mm
 10c - 1000mm x 1000mm x 20mm
- 11. ALUMINUM SLAT PANELS
 11a - 1000mm x 1000mm x 10mm
 11b - 1000mm x 1000mm x 15mm
 11c - 1000mm x 1000mm x 20mm
- 12. ALUMINUM SLAT PANELS
 12a - 1000mm x 1000mm x 10mm
 12b - 1000mm x 1000mm x 15mm
 12c - 1000mm x 1000mm x 20mm
- 13. ALUMINUM SLAT PANELS
 13a - 1000mm x 1000mm x 10mm
 13b - 1000mm x 1000mm x 15mm
 13c - 1000mm x 1000mm x 20mm
- 14. ALUMINUM SLAT PANELS
 14a - 1000mm x 1000mm x 10mm
 14b - 1000mm x 1000mm x 15mm
 14c - 1000mm x 1000mm x 20mm
- 15. ALUMINUM SLAT PANELS
 15a - 1000mm x 1000mm x 10mm
 15b - 1000mm x 1000mm x 15mm
 15c - 1000mm x 1000mm x 20mm

WEST ELEVATION

PINNACLE CENTRE @ CAPSTAN VILLAGE: PHASE 4
 Building 'L' Change of Use & Redesign
 3200 No. 3 Road, Richmond BC
 for: Pinnacle Living (Capstan Village) Lands Inc.

DP 24-012258
 DP Panel Presentation: Sep 12, 2024





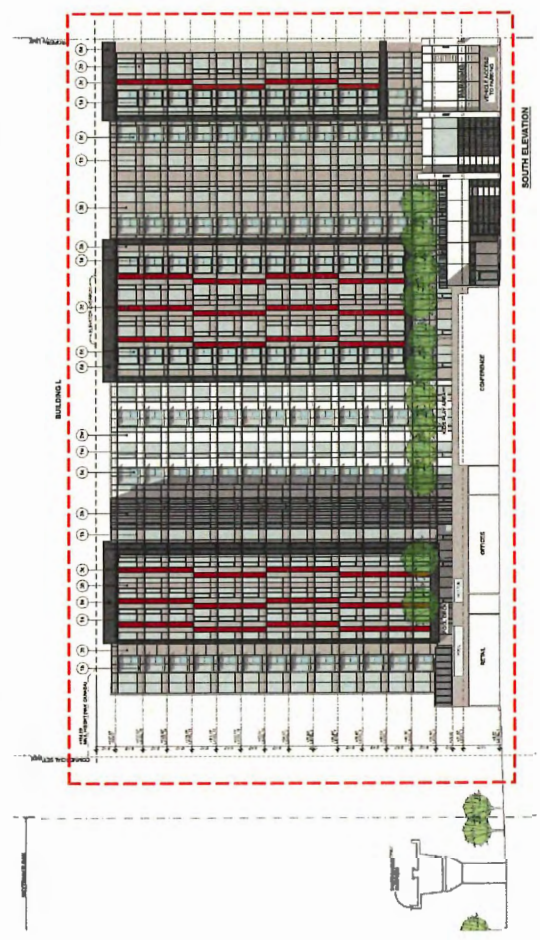
LIST OF MATERIALS

1. ALUMINUM WINDOW FRAMES
In all elevations, show aluminum window frames. Color: Anodized Clear. Material: 6061-T6 Aluminum. Finish: Clear Anodized. Thickness: 1.5mm. Grid: 150mm. Spacing: 100mm.
2. ALUMINUM WINDOW GLASS
In all elevations, show aluminum window glass. Color: Clear. Material: Low-E Glass. Finish: Clear. Thickness: 10mm. Grid: 150mm. Spacing: 100mm.
3. ALUMINUM WINDOW SILL
In all elevations, show aluminum window sill. Color: Anodized Clear. Material: 6061-T6 Aluminum. Finish: Clear Anodized. Thickness: 10mm. Grid: 150mm. Spacing: 100mm.
4. ALUMINUM WINDOW CASE
In all elevations, show aluminum window case. Color: Anodized Clear. Material: 6061-T6 Aluminum. Finish: Clear Anodized. Thickness: 10mm. Grid: 150mm. Spacing: 100mm.
5. ALUMINUM WINDOW TRACK
In all elevations, show aluminum window track. Color: Anodized Clear. Material: 6061-T6 Aluminum. Finish: Clear Anodized. Thickness: 10mm. Grid: 150mm. Spacing: 100mm.
6. ALUMINUM WINDOW HANGERS
In all elevations, show aluminum window hangers. Color: Anodized Clear. Material: 6061-T6 Aluminum. Finish: Clear Anodized. Thickness: 10mm. Grid: 150mm. Spacing: 100mm.
7. ALUMINUM WINDOW STOP
In all elevations, show aluminum window stop. Color: Anodized Clear. Material: 6061-T6 Aluminum. Finish: Clear Anodized. Thickness: 10mm. Grid: 150mm. Spacing: 100mm.
8. ALUMINUM WINDOW SEAL
In all elevations, show aluminum window seal. Color: Clear. Material: EPDM. Finish: Clear. Thickness: 2mm. Grid: 150mm. Spacing: 100mm.
9. ALUMINUM WINDOW GASKET
In all elevations, show aluminum window gasket. Color: Clear. Material: EPDM. Finish: Clear. Thickness: 2mm. Grid: 150mm. Spacing: 100mm.
10. ALUMINUM WINDOW WASHER
In all elevations, show aluminum window washer. Color: Anodized Clear. Material: 6061-T6 Aluminum. Finish: Clear Anodized. Thickness: 10mm. Grid: 150mm. Spacing: 100mm.
11. ALUMINUM WINDOW SCREW
In all elevations, show aluminum window screw. Color: Anodized Clear. Material: 6061-T6 Aluminum. Finish: Clear Anodized. Thickness: 10mm. Grid: 150mm. Spacing: 100mm.
12. ALUMINUM WINDOW PIN
In all elevations, show aluminum window pin. Color: Anodized Clear. Material: 6061-T6 Aluminum. Finish: Clear Anodized. Thickness: 10mm. Grid: 150mm. Spacing: 100mm.
13. ALUMINUM WINDOW BRACKET
In all elevations, show aluminum window bracket. Color: Anodized Clear. Material: 6061-T6 Aluminum. Finish: Clear Anodized. Thickness: 10mm. Grid: 150mm. Spacing: 100mm.
14. ALUMINUM WINDOW ROLLER
In all elevations, show aluminum window roller. Color: Anodized Clear. Material: 6061-T6 Aluminum. Finish: Clear Anodized. Thickness: 10mm. Grid: 150mm. Spacing: 100mm.
15. ALUMINUM WINDOW STOP BLOCK
In all elevations, show aluminum window stop block. Color: Anodized Clear. Material: 6061-T6 Aluminum. Finish: Clear Anodized. Thickness: 10mm. Grid: 150mm. Spacing: 100mm.
16. ALUMINUM WINDOW STOP PIN
In all elevations, show aluminum window stop pin. Color: Anodized Clear. Material: 6061-T6 Aluminum. Finish: Clear Anodized. Thickness: 10mm. Grid: 150mm. Spacing: 100mm.
17. ALUMINUM WINDOW STOP WASHER
In all elevations, show aluminum window stop washer. Color: Anodized Clear. Material: 6061-T6 Aluminum. Finish: Clear Anodized. Thickness: 10mm. Grid: 150mm. Spacing: 100mm.

SOUTH ELEVATION
APPROVED OFFICE USE
DP-18-9217252

INDICATES EXTENT OF
REVISIONS ASSOCIATED
WITH NEW DP APPLICATION

SOUTH ELEVATION
PROPOSED HOTEL USE
DP-24-012258



LIST OF MATERIALS

1. ALUMINUM WINDOW FRAMES (PROPOSED)
In all elevations, show aluminum window frames. Color: Anodized Clear. Material: 6061-T6 Aluminum. Finish: Clear Anodized. Thickness: 1.5mm. Grid: 150mm. Spacing: 100mm.
2. ALUMINUM WINDOW GLASS (PROPOSED)
In all elevations, show aluminum window glass. Color: Clear. Material: Low-E Glass. Finish: Clear. Thickness: 10mm. Grid: 150mm. Spacing: 100mm.
3. ALUMINUM WINDOW SILL (PROPOSED)
In all elevations, show aluminum window sill. Color: Anodized Clear. Material: 6061-T6 Aluminum. Finish: Clear Anodized. Thickness: 10mm. Grid: 150mm. Spacing: 100mm.
4. ALUMINUM WINDOW CASE (PROPOSED)
In all elevations, show aluminum window case. Color: Anodized Clear. Material: 6061-T6 Aluminum. Finish: Clear Anodized. Thickness: 10mm. Grid: 150mm. Spacing: 100mm.
5. ALUMINUM WINDOW TRACK (PROPOSED)
In all elevations, show aluminum window track. Color: Anodized Clear. Material: 6061-T6 Aluminum. Finish: Clear Anodized. Thickness: 10mm. Grid: 150mm. Spacing: 100mm.
6. ALUMINUM WINDOW HANGERS (PROPOSED)
In all elevations, show aluminum window hangers. Color: Anodized Clear. Material: 6061-T6 Aluminum. Finish: Clear Anodized. Thickness: 10mm. Grid: 150mm. Spacing: 100mm.
7. ALUMINUM WINDOW STOP (PROPOSED)
In all elevations, show aluminum window stop. Color: Anodized Clear. Material: 6061-T6 Aluminum. Finish: Clear Anodized. Thickness: 10mm. Grid: 150mm. Spacing: 100mm.
8. ALUMINUM WINDOW SEAL (PROPOSED)
In all elevations, show aluminum window seal. Color: Clear. Material: EPDM. Finish: Clear. Thickness: 2mm. Grid: 150mm. Spacing: 100mm.
9. ALUMINUM WINDOW GASKET (PROPOSED)
In all elevations, show aluminum window gasket. Color: Clear. Material: EPDM. Finish: Clear. Thickness: 2mm. Grid: 150mm. Spacing: 100mm.
10. ALUMINUM WINDOW WASHER (PROPOSED)
In all elevations, show aluminum window washer. Color: Anodized Clear. Material: 6061-T6 Aluminum. Finish: Clear Anodized. Thickness: 10mm. Grid: 150mm. Spacing: 100mm.
11. ALUMINUM WINDOW SCREW (PROPOSED)
In all elevations, show aluminum window screw. Color: Anodized Clear. Material: 6061-T6 Aluminum. Finish: Clear Anodized. Thickness: 10mm. Grid: 150mm. Spacing: 100mm.
12. ALUMINUM WINDOW PIN (PROPOSED)
In all elevations, show aluminum window pin. Color: Anodized Clear. Material: 6061-T6 Aluminum. Finish: Clear Anodized. Thickness: 10mm. Grid: 150mm. Spacing: 100mm.
13. ALUMINUM WINDOW BRACKET (PROPOSED)
In all elevations, show aluminum window bracket. Color: Anodized Clear. Material: 6061-T6 Aluminum. Finish: Clear Anodized. Thickness: 10mm. Grid: 150mm. Spacing: 100mm.
14. ALUMINUM WINDOW ROLLER (PROPOSED)
In all elevations, show aluminum window roller. Color: Anodized Clear. Material: 6061-T6 Aluminum. Finish: Clear Anodized. Thickness: 10mm. Grid: 150mm. Spacing: 100mm.
15. ALUMINUM WINDOW STOP BLOCK (PROPOSED)
In all elevations, show aluminum window stop block. Color: Anodized Clear. Material: 6061-T6 Aluminum. Finish: Clear Anodized. Thickness: 10mm. Grid: 150mm. Spacing: 100mm.
16. ALUMINUM WINDOW STOP PIN (PROPOSED)
In all elevations, show aluminum window stop pin. Color: Anodized Clear. Material: 6061-T6 Aluminum. Finish: Clear Anodized. Thickness: 10mm. Grid: 150mm. Spacing: 100mm.
17. ALUMINUM WINDOW STOP WASHER (PROPOSED)
In all elevations, show aluminum window stop washer. Color: Anodized Clear. Material: 6061-T6 Aluminum. Finish: Clear Anodized. Thickness: 10mm. Grid: 150mm. Spacing: 100mm.

SOUTH ELEVATION

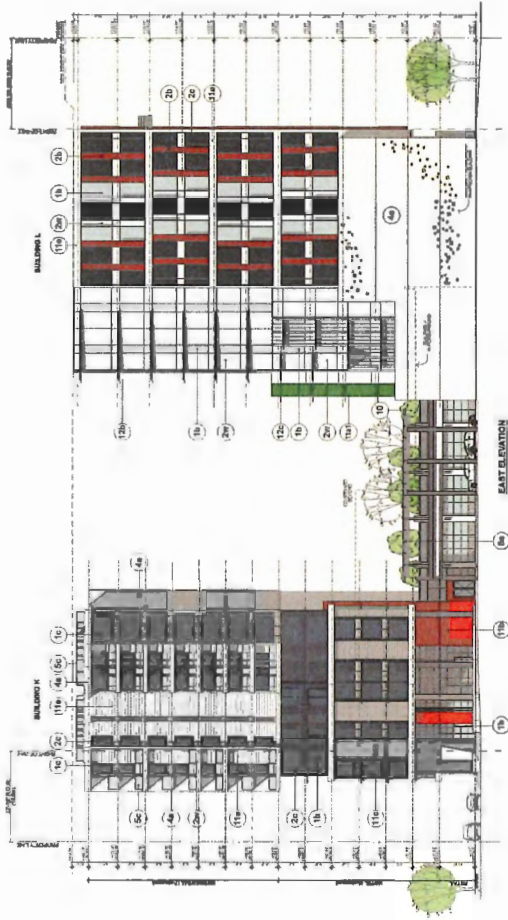
DP 24-012258
DP Panel Presentation: Sep 12, 2024

PINNACLE CENTRE @ CAPSTAN VILLAGE: PHASE 4
Building 'L' Change of Use & Redesign
3200 No. 3 Road, Richmond BC
for Pinnacle Living (Capstan Village) Lands Inc.

bingham-hill
ARCHITECT
17

LIST OF MATERIALS

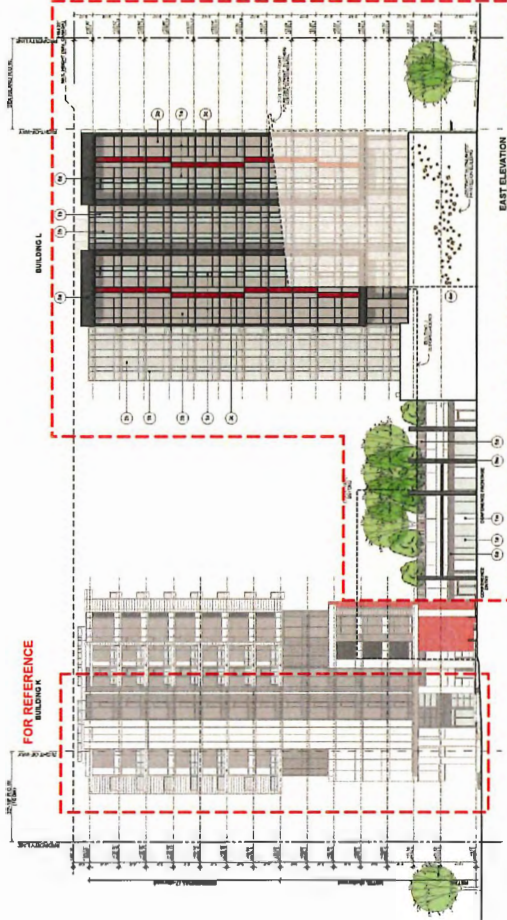
- 1 ALUMINUM PALETTE FINISH
 - 1a - 1000 Series, 1000 Series, 1000 Series
 - 1b - 1000 Series, 1000 Series, 1000 Series
 - 1c - 1000 Series, 1000 Series, 1000 Series
- 2 ALUMINUM PALETTE FINISH
 - 2a - 1000 Series, 1000 Series, 1000 Series
 - 2b - 1000 Series, 1000 Series, 1000 Series
 - 2c - 1000 Series, 1000 Series, 1000 Series
- 3 ALUMINUM PALETTE FINISH
 - 3a - 1000 Series, 1000 Series, 1000 Series
 - 3b - 1000 Series, 1000 Series, 1000 Series
 - 3c - 1000 Series, 1000 Series, 1000 Series
- 4 ALUMINUM PALETTE FINISH
 - 4a - 1000 Series, 1000 Series, 1000 Series
 - 4b - 1000 Series, 1000 Series, 1000 Series
 - 4c - 1000 Series, 1000 Series, 1000 Series
- 5 ALUMINUM PALETTE FINISH
 - 5a - 1000 Series, 1000 Series, 1000 Series
 - 5b - 1000 Series, 1000 Series, 1000 Series
 - 5c - 1000 Series, 1000 Series, 1000 Series
- 6 ALUMINUM PALETTE FINISH
 - 6a - 1000 Series, 1000 Series, 1000 Series
 - 6b - 1000 Series, 1000 Series, 1000 Series
 - 6c - 1000 Series, 1000 Series, 1000 Series
- 7 ALUMINUM PALETTE FINISH
 - 7a - 1000 Series, 1000 Series, 1000 Series
 - 7b - 1000 Series, 1000 Series, 1000 Series
 - 7c - 1000 Series, 1000 Series, 1000 Series
- 8 ALUMINUM PALETTE FINISH
 - 8a - 1000 Series, 1000 Series, 1000 Series
 - 8b - 1000 Series, 1000 Series, 1000 Series
 - 8c - 1000 Series, 1000 Series, 1000 Series
- 9 ALUMINUM PALETTE FINISH
 - 9a - 1000 Series, 1000 Series, 1000 Series
 - 9b - 1000 Series, 1000 Series, 1000 Series
 - 9c - 1000 Series, 1000 Series, 1000 Series
- 10 ALUMINUM PALETTE FINISH
 - 10a - 1000 Series, 1000 Series, 1000 Series
 - 10b - 1000 Series, 1000 Series, 1000 Series
 - 10c - 1000 Series, 1000 Series, 1000 Series
- 11 ALUMINUM PALETTE FINISH
 - 11a - 1000 Series, 1000 Series, 1000 Series
 - 11b - 1000 Series, 1000 Series, 1000 Series
 - 11c - 1000 Series, 1000 Series, 1000 Series
- 12 ALUMINUM PALETTE FINISH
 - 12a - 1000 Series, 1000 Series, 1000 Series
 - 12b - 1000 Series, 1000 Series, 1000 Series
 - 12c - 1000 Series, 1000 Series, 1000 Series
- 13 ALUMINUM PALETTE FINISH
 - 13a - 1000 Series, 1000 Series, 1000 Series
 - 13b - 1000 Series, 1000 Series, 1000 Series
 - 13c - 1000 Series, 1000 Series, 1000 Series
- 14 ALUMINUM PALETTE FINISH
 - 14a - 1000 Series, 1000 Series, 1000 Series
 - 14b - 1000 Series, 1000 Series, 1000 Series
 - 14c - 1000 Series, 1000 Series, 1000 Series
- 15 ALUMINUM PALETTE FINISH
 - 15a - 1000 Series, 1000 Series, 1000 Series
 - 15b - 1000 Series, 1000 Series, 1000 Series
 - 15c - 1000 Series, 1000 Series, 1000 Series



EAST ELEVATION
APPROVED OFFICE USE
DP 18481826

LIST OF MATERIALS

- 1 ALUMINUM PALETTE FINISH
 - 1a - 1000 Series, 1000 Series, 1000 Series
 - 1b - 1000 Series, 1000 Series, 1000 Series
 - 1c - 1000 Series, 1000 Series, 1000 Series
- 2 ALUMINUM PALETTE FINISH
 - 2a - 1000 Series, 1000 Series, 1000 Series
 - 2b - 1000 Series, 1000 Series, 1000 Series
 - 2c - 1000 Series, 1000 Series, 1000 Series
- 3 ALUMINUM PALETTE FINISH
 - 3a - 1000 Series, 1000 Series, 1000 Series
 - 3b - 1000 Series, 1000 Series, 1000 Series
 - 3c - 1000 Series, 1000 Series, 1000 Series
- 4 ALUMINUM PALETTE FINISH
 - 4a - 1000 Series, 1000 Series, 1000 Series
 - 4b - 1000 Series, 1000 Series, 1000 Series
 - 4c - 1000 Series, 1000 Series, 1000 Series
- 5 ALUMINUM PALETTE FINISH
 - 5a - 1000 Series, 1000 Series, 1000 Series
 - 5b - 1000 Series, 1000 Series, 1000 Series
 - 5c - 1000 Series, 1000 Series, 1000 Series
- 6 ALUMINUM PALETTE FINISH
 - 6a - 1000 Series, 1000 Series, 1000 Series
 - 6b - 1000 Series, 1000 Series, 1000 Series
 - 6c - 1000 Series, 1000 Series, 1000 Series
- 7 ALUMINUM PALETTE FINISH
 - 7a - 1000 Series, 1000 Series, 1000 Series
 - 7b - 1000 Series, 1000 Series, 1000 Series
 - 7c - 1000 Series, 1000 Series, 1000 Series
- 8 ALUMINUM PALETTE FINISH
 - 8a - 1000 Series, 1000 Series, 1000 Series
 - 8b - 1000 Series, 1000 Series, 1000 Series
 - 8c - 1000 Series, 1000 Series, 1000 Series
- 9 ALUMINUM PALETTE FINISH
 - 9a - 1000 Series, 1000 Series, 1000 Series
 - 9b - 1000 Series, 1000 Series, 1000 Series
 - 9c - 1000 Series, 1000 Series, 1000 Series
- 10 ALUMINUM PALETTE FINISH
 - 10a - 1000 Series, 1000 Series, 1000 Series
 - 10b - 1000 Series, 1000 Series, 1000 Series
 - 10c - 1000 Series, 1000 Series, 1000 Series
- 11 ALUMINUM PALETTE FINISH
 - 11a - 1000 Series, 1000 Series, 1000 Series
 - 11b - 1000 Series, 1000 Series, 1000 Series
 - 11c - 1000 Series, 1000 Series, 1000 Series
- 12 ALUMINUM PALETTE FINISH
 - 12a - 1000 Series, 1000 Series, 1000 Series
 - 12b - 1000 Series, 1000 Series, 1000 Series
 - 12c - 1000 Series, 1000 Series, 1000 Series
- 13 ALUMINUM PALETTE FINISH
 - 13a - 1000 Series, 1000 Series, 1000 Series
 - 13b - 1000 Series, 1000 Series, 1000 Series
 - 13c - 1000 Series, 1000 Series, 1000 Series
- 14 ALUMINUM PALETTE FINISH
 - 14a - 1000 Series, 1000 Series, 1000 Series
 - 14b - 1000 Series, 1000 Series, 1000 Series
 - 14c - 1000 Series, 1000 Series, 1000 Series
- 15 ALUMINUM PALETTE FINISH
 - 15a - 1000 Series, 1000 Series, 1000 Series
 - 15b - 1000 Series, 1000 Series, 1000 Series
 - 15c - 1000 Series, 1000 Series, 1000 Series



INDICATES EXTENT OF
REVISIONS
WITH NEW DP APPLICATION

EAST ELEVATION
APPROVED HOTEL USE
DP 24416268

EAST ELEVATION

PINNACLE CENTRE @ CAPSTAN VILLAGE: PHASE 4
Building 'L' Change of Use & Redesign
3200 No. 3 Road, Richmond BC
for: Pinnacle Living (Capstan Village) Lands Inc.

DP 24-012358
DP Panel Presentation: Sep 12, 2024



METAL

(including: door, window & guardrail frames, spandrel panels, metal panels and louvers)



1a, 3a, 5a, 6a, 7a, 8a
Black Jack



1b, 3b, 5b, 6b, 8b
Pigeon Grey



2c
Deep Rose



1w, 6w, 8w
White



1c, 6c
Clear Anodized

LIST OF MATERIALS

1. ALUMINUM EXTRUSION COLOURS & FINISHES
 - 1a - 3a, 5a, 6a, 7a, 8a - Black Jack
 - 1b - 3b, 5b, 6b, 8b - Pigeon Grey
 - 1c - Clear Anodized
 - 1w - White
2. PAINTS
 - 2c - Deep Rose
3. METAL FINISHES
 - 3a - 3c - Clear Anodized
 - 3b - 3d - Clear Anodized
 - 3e - 3f - Clear Anodized
 - 3g - 3h - Clear Anodized
 - 3i - 3j - Clear Anodized
 - 3k - 3l - Clear Anodized
 - 3m - 3n - Clear Anodized
 - 3o - 3p - Clear Anodized
 - 3q - 3r - Clear Anodized
 - 3s - 3t - Clear Anodized
 - 3u - 3v - Clear Anodized
 - 3w - 3x - Clear Anodized
 - 3y - 3z - Clear Anodized
4. PAINTS
 - 4a - 4b - White
 - 4c - 4d - White
 - 4e - 4f - White
 - 4g - 4h - White
 - 4i - 4j - White
 - 4k - 4l - White
 - 4m - 4n - White
 - 4o - 4p - White
 - 4q - 4r - White
 - 4s - 4t - White
 - 4u - 4v - White
 - 4w - 4x - White
 - 4y - 4z - White
5. ALUMINUM & GLASS CLADDING
 - 5a - 5b - Clear Anodized
 - 5c - 5d - Clear Anodized
 - 5e - 5f - Clear Anodized
 - 5g - 5h - Clear Anodized
 - 5i - 5j - Clear Anodized
 - 5k - 5l - Clear Anodized
 - 5m - 5n - Clear Anodized
 - 5o - 5p - Clear Anodized
 - 5q - 5r - Clear Anodized
 - 5s - 5t - Clear Anodized
 - 5u - 5v - Clear Anodized
 - 5w - 5x - Clear Anodized
 - 5y - 5z - Clear Anodized
6. METAL LAMINATE
 - 6a - 6b - Clear Anodized
 - 6c - 6d - Clear Anodized
 - 6e - 6f - Clear Anodized
 - 6g - 6h - Clear Anodized
 - 6i - 6j - Clear Anodized
 - 6k - 6l - Clear Anodized
 - 6m - 6n - Clear Anodized
 - 6o - 6p - Clear Anodized
 - 6q - 6r - Clear Anodized
 - 6s - 6t - Clear Anodized
 - 6u - 6v - Clear Anodized
 - 6w - 6x - Clear Anodized
 - 6y - 6z - Clear Anodized
7. STEEL & ALUMINUM CLADDING
 - 7a - 7b - Clear Anodized
 - 7c - 7d - Clear Anodized
 - 7e - 7f - Clear Anodized
 - 7g - 7h - Clear Anodized
 - 7i - 7j - Clear Anodized
 - 7k - 7l - Clear Anodized
 - 7m - 7n - Clear Anodized
 - 7o - 7p - Clear Anodized
 - 7q - 7r - Clear Anodized
 - 7s - 7t - Clear Anodized
 - 7u - 7v - Clear Anodized
 - 7w - 7x - Clear Anodized
 - 7y - 7z - Clear Anodized
8. GLASS SECTION
 - 8a - 8b - Clear Anodized
 - 8c - 8d - Clear Anodized
 - 8e - 8f - Clear Anodized
 - 8g - 8h - Clear Anodized
 - 8i - 8j - Clear Anodized
 - 8k - 8l - Clear Anodized
 - 8m - 8n - Clear Anodized
 - 8o - 8p - Clear Anodized
 - 8q - 8r - Clear Anodized
 - 8s - 8t - Clear Anodized
 - 8u - 8v - Clear Anodized
 - 8w - 8x - Clear Anodized
 - 8y - 8z - Clear Anodized

GLASS
(spandrel panels)



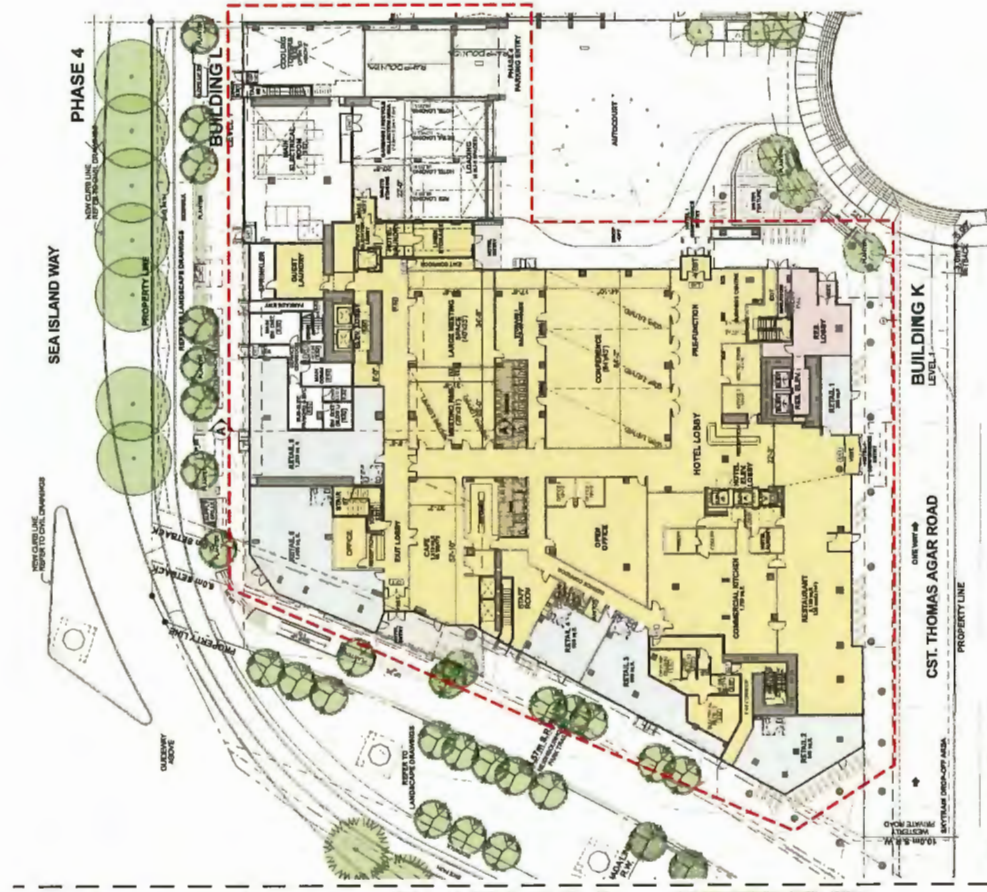
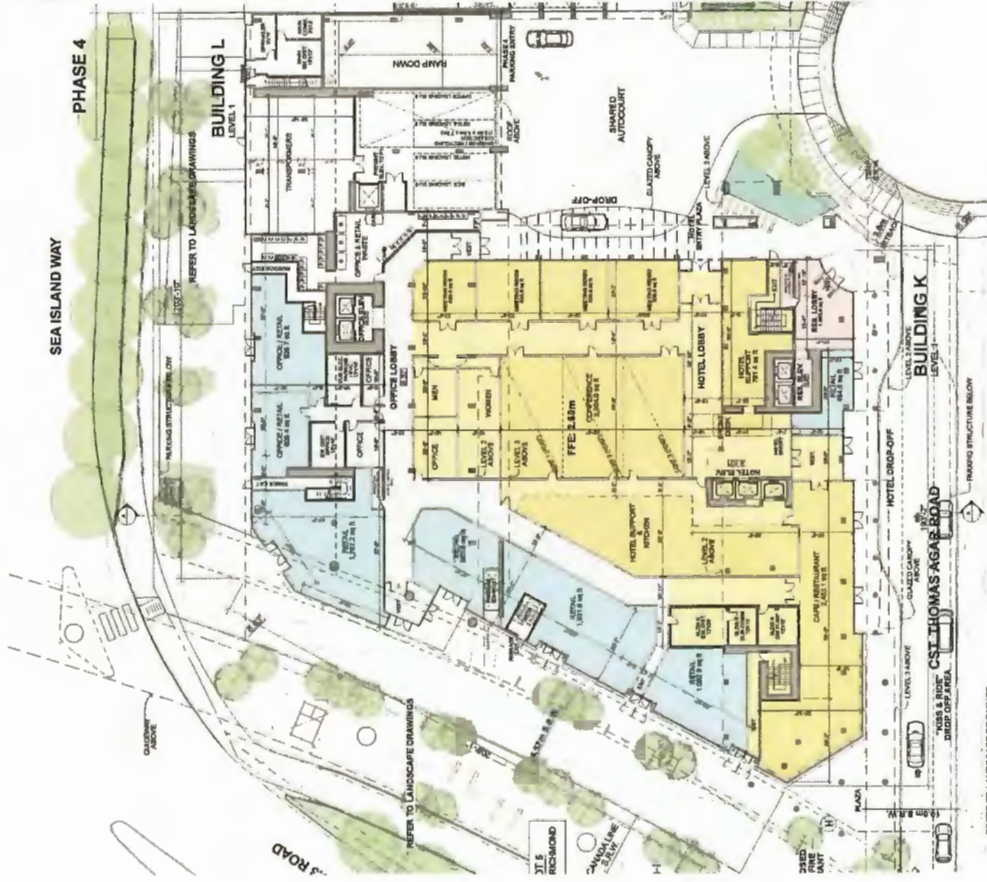
2w
White

PAINTED CONCRETE



4w
White





REFER TO LANDSCAPE DRAWINGS
 FLOOR AREA DESIGNATION
 RESIDENTIAL - MARKET
 RESIDENTIAL - AFFORDABLE HOUSING
 RESIDENTIAL - MARKET B.U.H.
 RESIDENTIAL - INDOOR AMENITY
 NON-RESIDENTIAL, OFFICE/RETAIL
 NON-RESIDENTIAL, INDOOR AMENITY
 NON-RESIDENTIAL, HOTEL
 NON-RESIDENTIAL, INDOOR AMENITY

INDICATES EXTENT OF REVISIONS ASSOCIATED WITH NEW DP APPLICATION

LEVEL 1 HOTEL USE DP-24-012258

DP Panel Presentation: Sep 12, 2024
 DP 24-012258

PINNACLE CENTRE @ CAPSTAN VILLAGE: PHASE 4
 Building 'L' Change of Use & Redesign
 3200 No. 3 Road, Richmond BC
 for: Pinnacle Living (Capstan Village) Lands Inc.

19

b i n g h a m h i l l
 ARCHITECTS

**CAPSTAN VILLAGE
PHASE 4 - GROUND LEVEL**

APPROVED
DP APPLICATION 2020



NEW
DP APPLICATION 2024



PROPOSED REVISIONS:

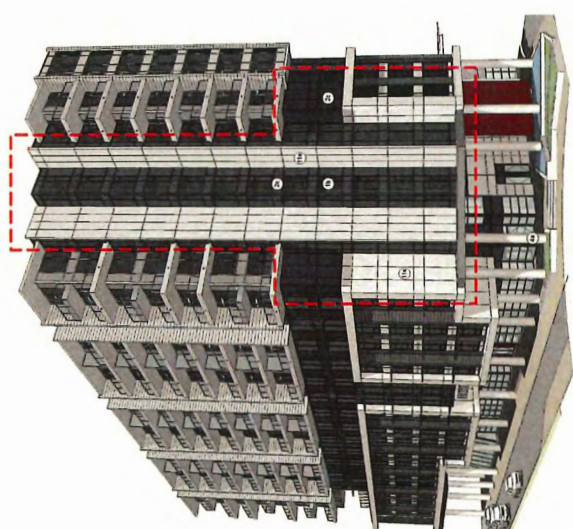
- 1.** AS REQUIRED BY THE ENGINEERING DEPARTMENT THROUGH THE SERVICING AGREEMENT, THE LAYOUT OF THE SEA ISLAND SRW IS RECONFIGURED TO ACCOMMODATE THE SIDEWALK AND BIKE PATH FULLY WITHIN THE SRW, OVER THE PARKADE.
- 2.** AS REQUIRED BY THE TRANSPORTATION DEPARTMENT, THE HOTEL DROP-OFF IS REMOVED FROM CST. THOMAS AGAR ROAD AND RELOCATED IN THE AUTO-COURT.

SOFTSCAPE LEGEND

- LAYERED SHRUB PLANTING
- OFFSITE LAWN BOULEVARDS
- WATER FEATURE

LIST OF MATERIALS

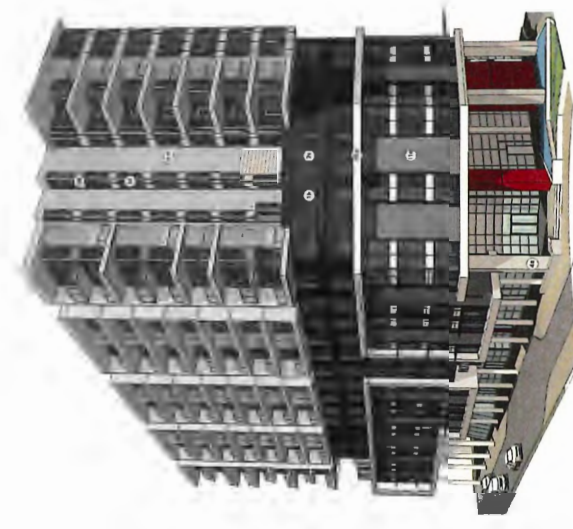
- ① **EXTERIOR FINISHES**
 - 1a - solid grey stone; match BM 2128 "Stone-Soft"
 - 1b - solid grey stone; match BM 2128 "Stone-Soft"
- ② **SPANDREL GLASS IN ALUMINUM FRAMES**
 - 2a - clear glass; match BM 2054 "Clear Glass"
 - 2b - clear glass; match BM 2054 "Clear Glass"
 - 2c - medium grey; match BM 2128 "Medium Grey"
 - 2d - white; match BM 2128 "White"
- ③ **GLASS PARTITIONS**
 - 3a - clear glass; match BM 2128 "Clear Glass"
 - 3b - white; match BM 2128 "White"
- ④ **PAINTED CONCRETE**
 - 4a - white
 - 4b - white
- ⑤ **STAINLESS STEEL**
 - 5a - solid grey metal; finish of choice; grade 304
 - 5b - solid grey metal; finish of choice; grade 304
 - 5c - white metal; finish of choice; grade 304
- ⑥ **PROPERTY TECHNIQUES**
 - 6a - solid grey metal; finish of property choice; grade 304
 - 6b - solid grey metal; finish of property choice; grade 304
 - 6c - transparent; finish of choice
- ⑦ **INTERIOR FINISHES**
 - 7a - solid grey metal; match BM 2128 "Medium Grey"
 - 7b - solid grey metal; match BM 2128 "Medium Grey"
 - 7c - white; match BM 2128 "White"
- ⑧ **PROPERTY TECHNIQUES**
 - 8a - solid grey metal; match BM 2128 "Medium Grey"
 - 8b - solid grey metal; match BM 2128 "Medium Grey"
 - 8c - white; match BM 2128 "White"
- ⑨ **PROPERTY TECHNIQUES**
 - 9a - solid grey metal; match BM 2128 "Medium Grey"
 - 9b - solid grey metal; match BM 2128 "Medium Grey"
 - 9c - white; match BM 2128 "White"
- ⑩ **PROPERTY TECHNIQUES**
 - 10a - solid grey metal; match BM 2128 "Medium Grey"
 - 10b - solid grey metal; match BM 2128 "Medium Grey"
 - 10c - white; match BM 2128 "White"
- ⑪ **PROPERTY TECHNIQUES**
 - 11a - solid grey metal; match BM 2128 "Medium Grey"
 - 11b - solid grey metal; match BM 2128 "Medium Grey"
 - 11c - white; match BM 2128 "White"
 - 11d - solid grey metal; match BM 2128 "Medium Grey"
 - 11e - solid grey metal; match BM 2128 "Medium Grey"
 - 11f - solid grey metal; match BM 2128 "Medium Grey"
 - 11g - solid grey metal; match BM 2128 "Medium Grey"
 - 11h - solid grey metal; match BM 2128 "Medium Grey"
 - 11i - solid grey metal; match BM 2128 "Medium Grey"
 - 11j - solid grey metal; match BM 2128 "Medium Grey"
 - 11k - solid grey metal; match BM 2128 "Medium Grey"
 - 11l - solid grey metal; match BM 2128 "Medium Grey"
 - 11m - solid grey metal; match BM 2128 "Medium Grey"
 - 11n - solid grey metal; match BM 2128 "Medium Grey"
 - 11o - solid grey metal; match BM 2128 "Medium Grey"
 - 11p - solid grey metal; match BM 2128 "Medium Grey"
 - 11q - solid grey metal; match BM 2128 "Medium Grey"
 - 11r - solid grey metal; match BM 2128 "Medium Grey"
 - 11s - solid grey metal; match BM 2128 "Medium Grey"
 - 11t - solid grey metal; match BM 2128 "Medium Grey"
 - 11u - solid grey metal; match BM 2128 "Medium Grey"
 - 11v - solid grey metal; match BM 2128 "Medium Grey"
 - 11w - solid grey metal; match BM 2128 "Medium Grey"
 - 11x - solid grey metal; match BM 2128 "Medium Grey"
 - 11y - solid grey metal; match BM 2128 "Medium Grey"
 - 11z - solid grey metal; match BM 2128 "Medium Grey"



VIEW FROM SOUTHEAST
APPROXIMATE OFFICE USE
DP 24-012258

INDICATES EXTENT OF REVISIONS ASSOCIATED WITH NEW DP APPLICATION

VIEW FROM SOUTHEAST
APPROXIMATE OFFICE USE
DP 18-021232



BUILDING K: VIEW FROM CUL-DE-SAC

DP 24-012258
DP Panel Presentation: Sep 12, 2024

PINNACLE CENTRE @ CAPSTAN VILLAGE: PHASE 4
Building 'L' Change of Use & Redesign
3200 No. 3 Road, Richmond BC
for: Pinnacle Living (Capstan Village) Lands Inc.



