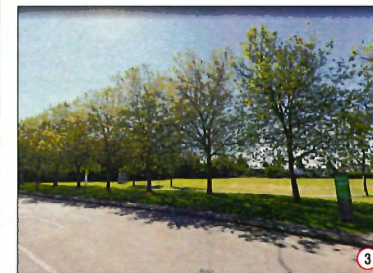
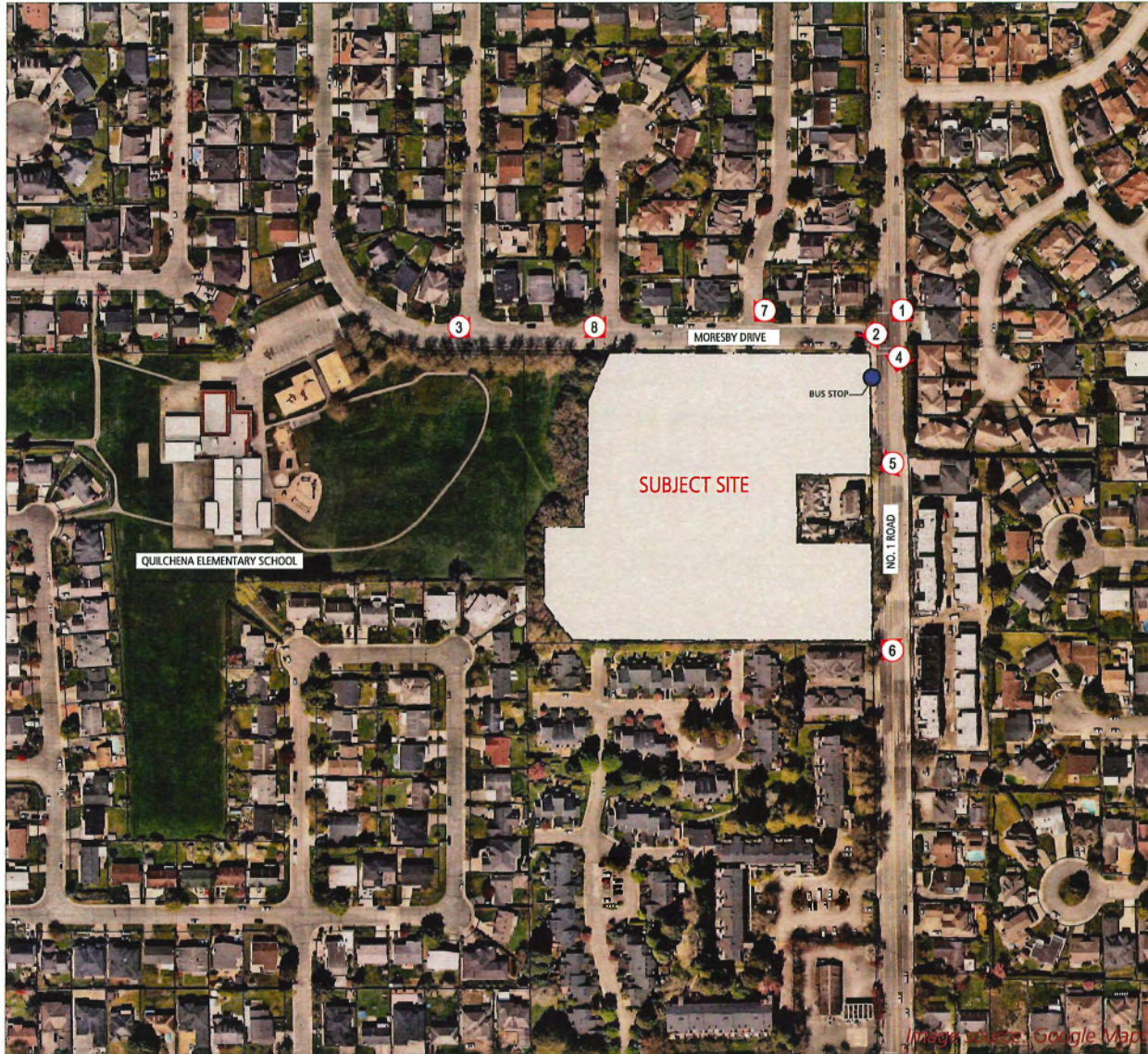




QUILCHENA PARK ESTATES for Western Construction and Citimark by Fougere Architecture Inc. and VDZ + Associates

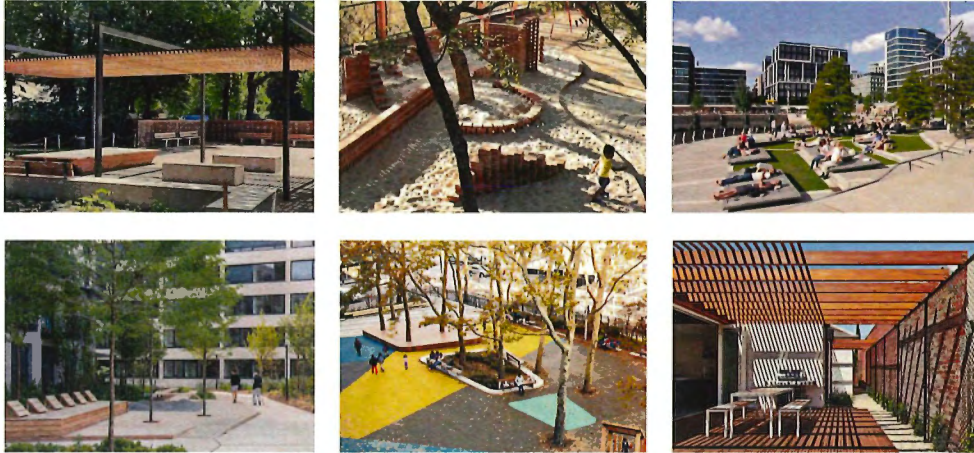
SITE CONTEXT



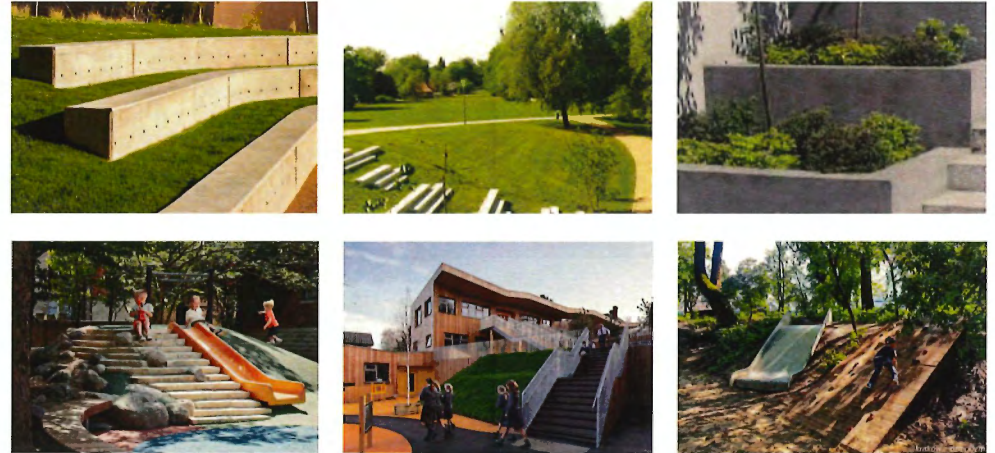
QUILCHENA PARK ESTATES for Western Construction and Citimark by Fougere Architecture Inc. and VDZ + Associates

LANDSCAPE DESIGN PRINCIPLES

Courtyards & Outdoor Amenity



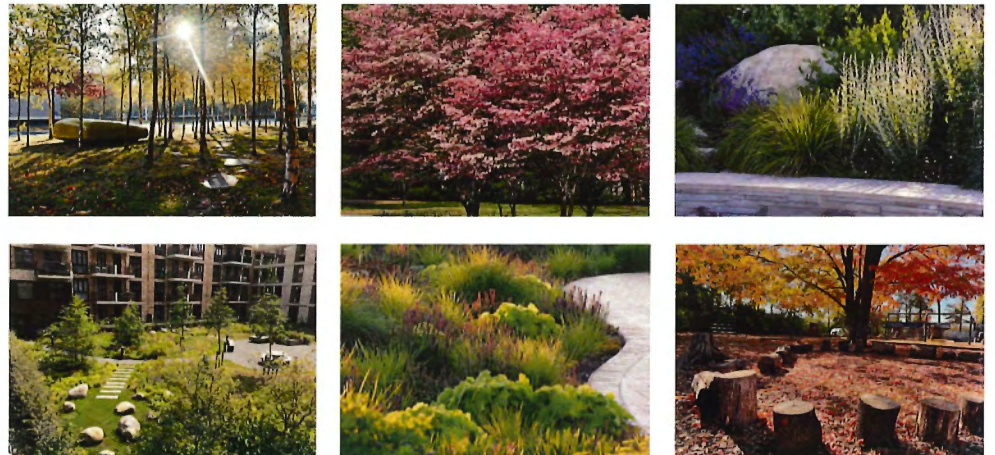
Grade Change



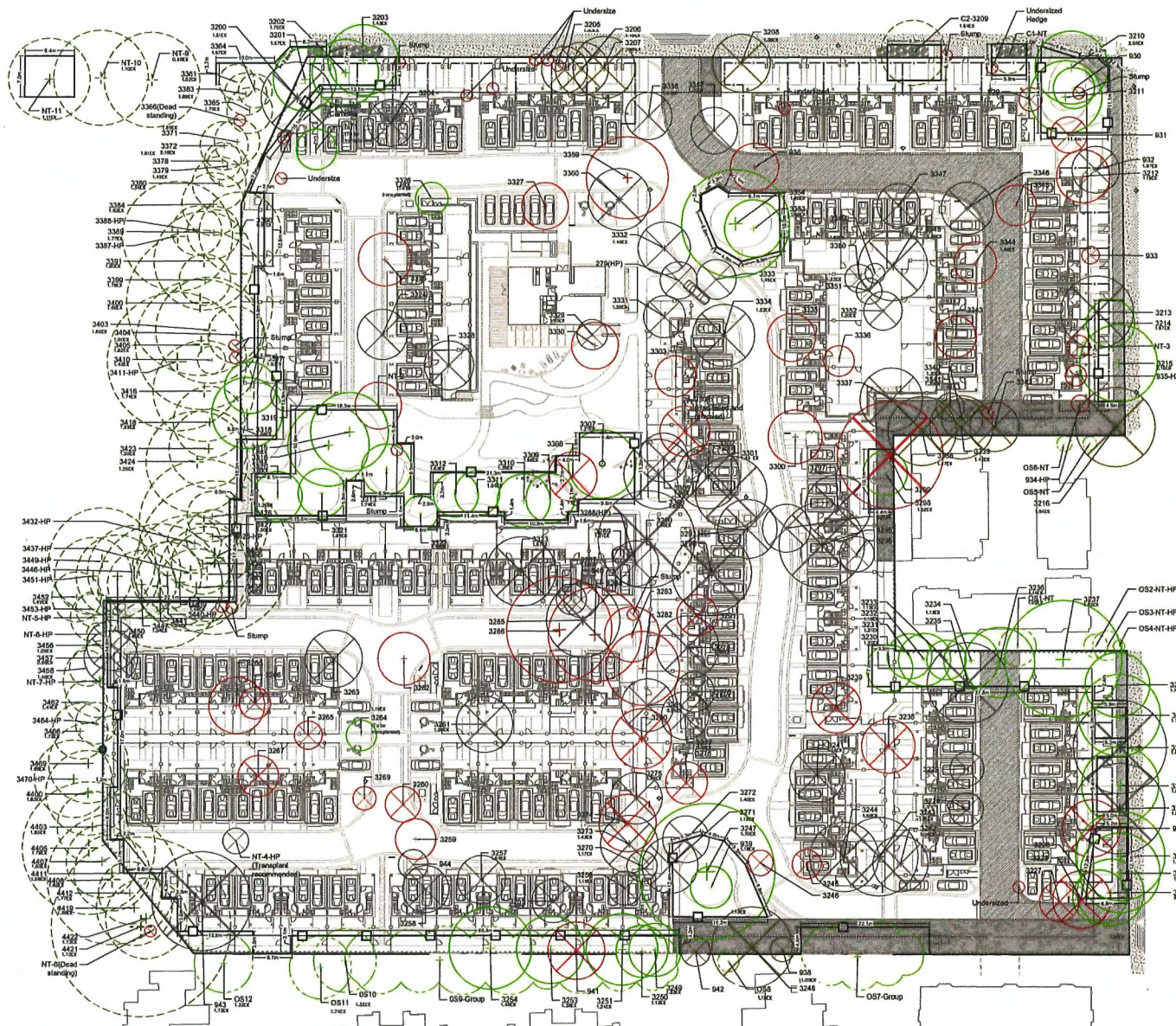
Existing Trees - Images from Arborist Report



Sustainability & Resilience



TREE PLAN



Legend

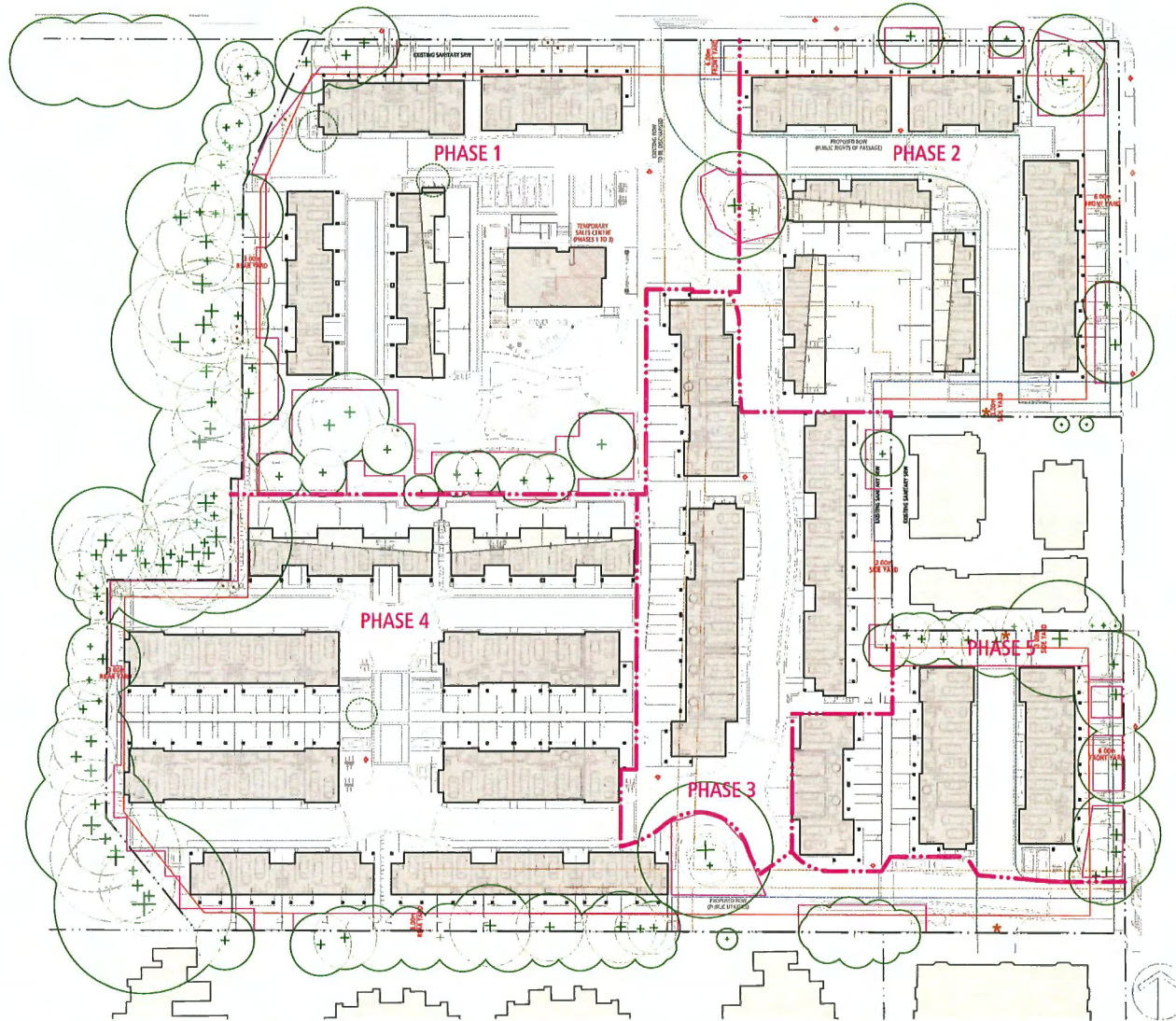
	Existing onsite tree to be retained
	Existing city tree to be retained
	Existing offsite tree to be retained
	Existing tree in conflict with demolition and machinery access to be removed (unlikely to survive after demolition)
	Existing tree in conflict with SRW
	Existing tree in conflict with construction to be removed
	Existing tree in poor condition to be removed
	Existing dead tree or stump
	Tree protection fencing

SITE PLAN CONCEPT



QUILCHENA PARK ESTATES for Western Construction and Citimark by Fougere Architecture Inc. and VDZ + Associates

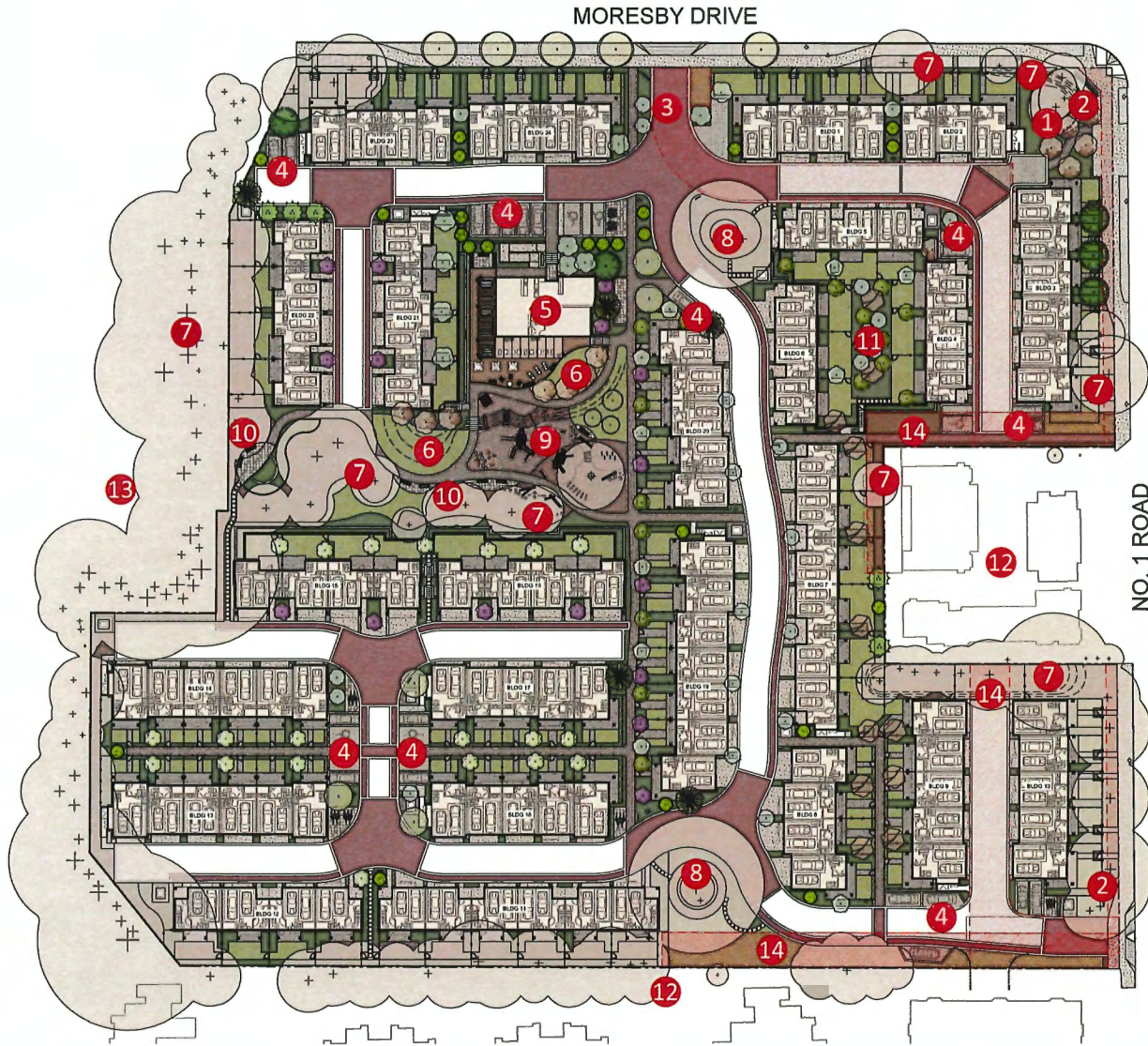
SITE PLAN



LEGEND

-  TREES RETAINED
-  TREES TRANSPLANTED
-  PROPOSED RIGHT OF WAY (PUBLIC UTILITIES)
-  EXISTING ROW AND EASEMENT (TO BE DISCHARGED)
-  PROPOSED RIGHT OF WAY (PUBLIC RIGHTS OF PASSAGE)
-  TREE PROTECTION FENCE
-  SIGNAGE LOCATIONS
Signage reads "This is a shared driveway and is planned to be used to provide vehicle access to future developments."
-  PHASING BOUNDARIES

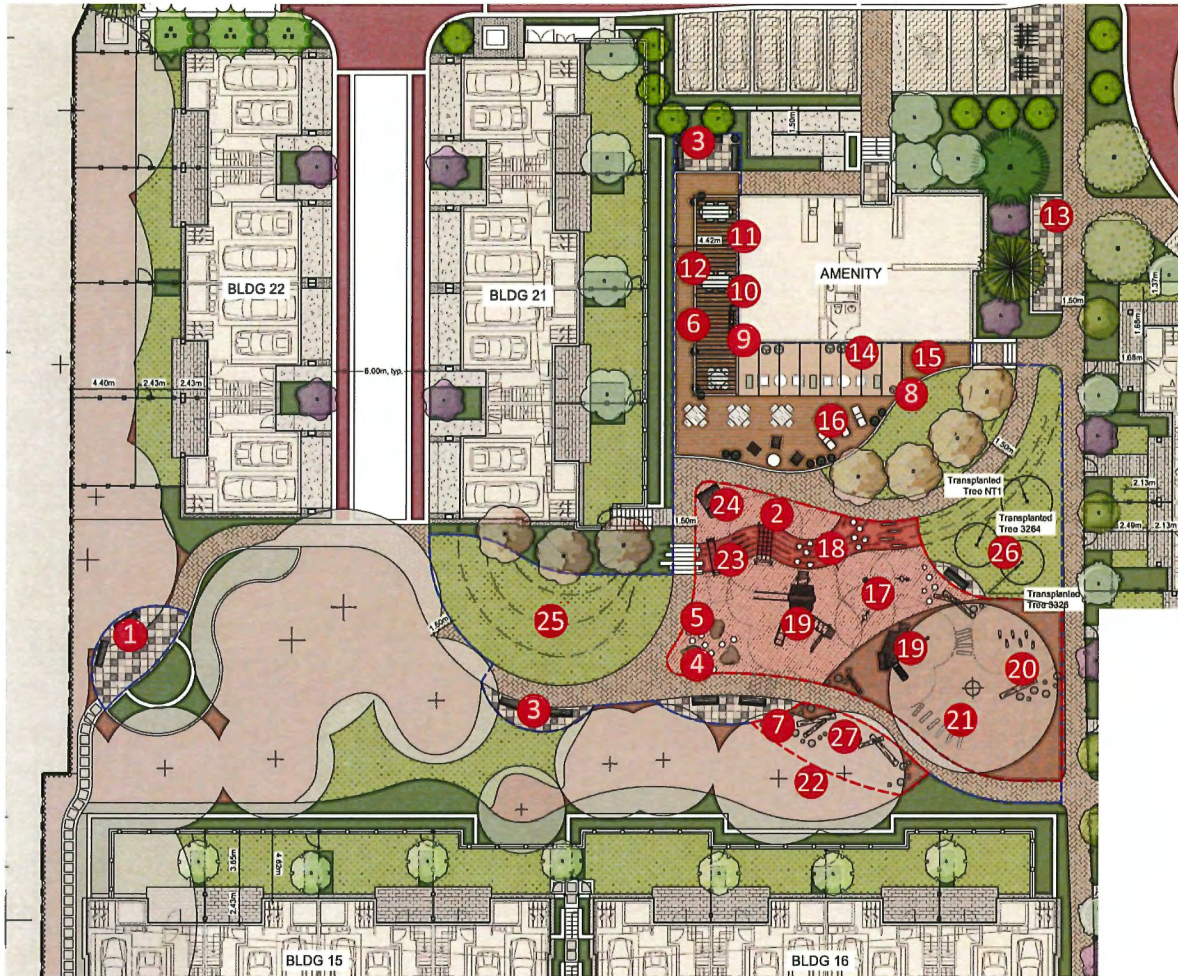
LANDSCAPE PLAN



- 1 Corner park
- 2 Project signage
- 3 Main entry
- 4 Visitor parking
- 5 Amenity building
- 6 Lawn
- 7 Existing trees
- 8 Significant retained tree with Seating
- 9 Play area
- 10 Seating node
- 11 Pocket garden
- 12 Neighbouring Property
- 13 Quilchena School Park
- 14 SRW

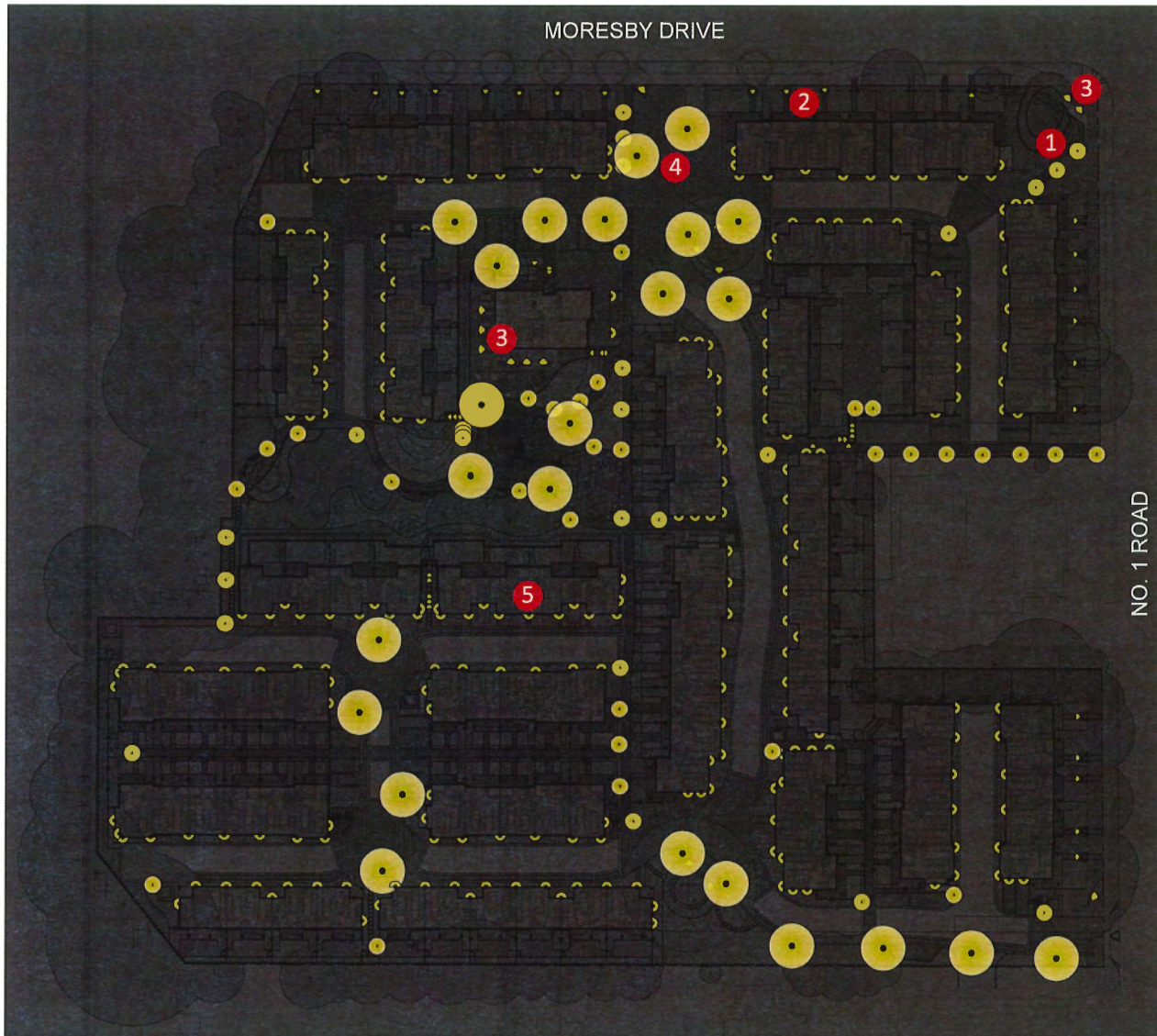


AMENITY AREA



- 1 Amenity space: 25m²
- 2 Play area: 320m²
- 3 Seating area
- 4 Boulder
- 5 Rubber holds
- 6 Amenity space: 985m²
- 7 Play area 28m²
- 8 Moveable planter
- 9 Lounge seating
- 10 Outdoor BBQ
- 11 Outdoor dining
- 12 Overhead trellis
- 13 Mailbox
- 14 Rain cover
- 15 Wood decking
- 16 Sun bathing lounger
- 17 Spring toys
- 18 Rubber slope play
- 19 Nature play structures
- 20 Climbing logs
- 21 Engineered wood fibre
- 22 Existing trees to remain
- 23 Slides
- 24 Play house
- 25 Lawn
- 26 Existing trees to relocate
- 27 Wood log/stepping stump

LIGHTING PLAN



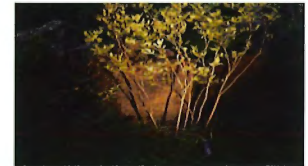
- 1 Bollard Light



- 2 Step/Wall Light



- 3 Up/Down Light



- 4 Pole Light



- 5 Building Exterior Light



PRECEDENT IMAGES



Strip lighting



Overhead lighting



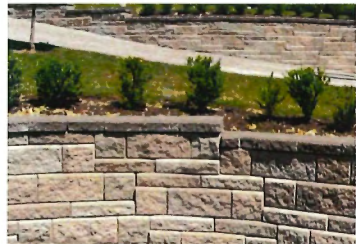
Bollard lighting



Paving pattern



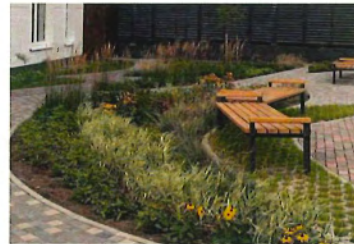
Patio/backyard



Allan block retaining wall



Retaining walls/planting



Planting beds



Lounge seating



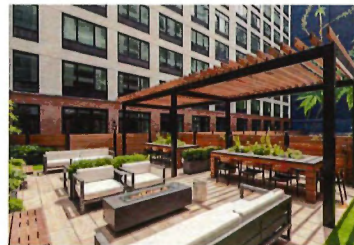
Bench



Outdoor kitchen



Outdoor seating



Covered seating



Lawn space



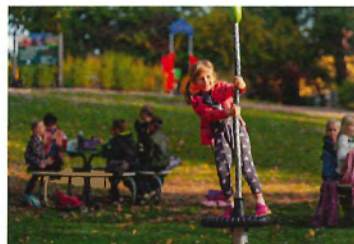
Sloped play area



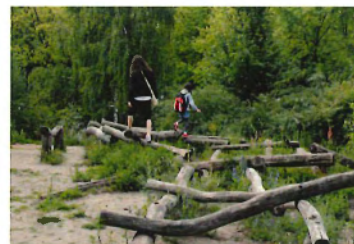
Wooden play structures



Nature play



Interactive elements



Naturalistic elements

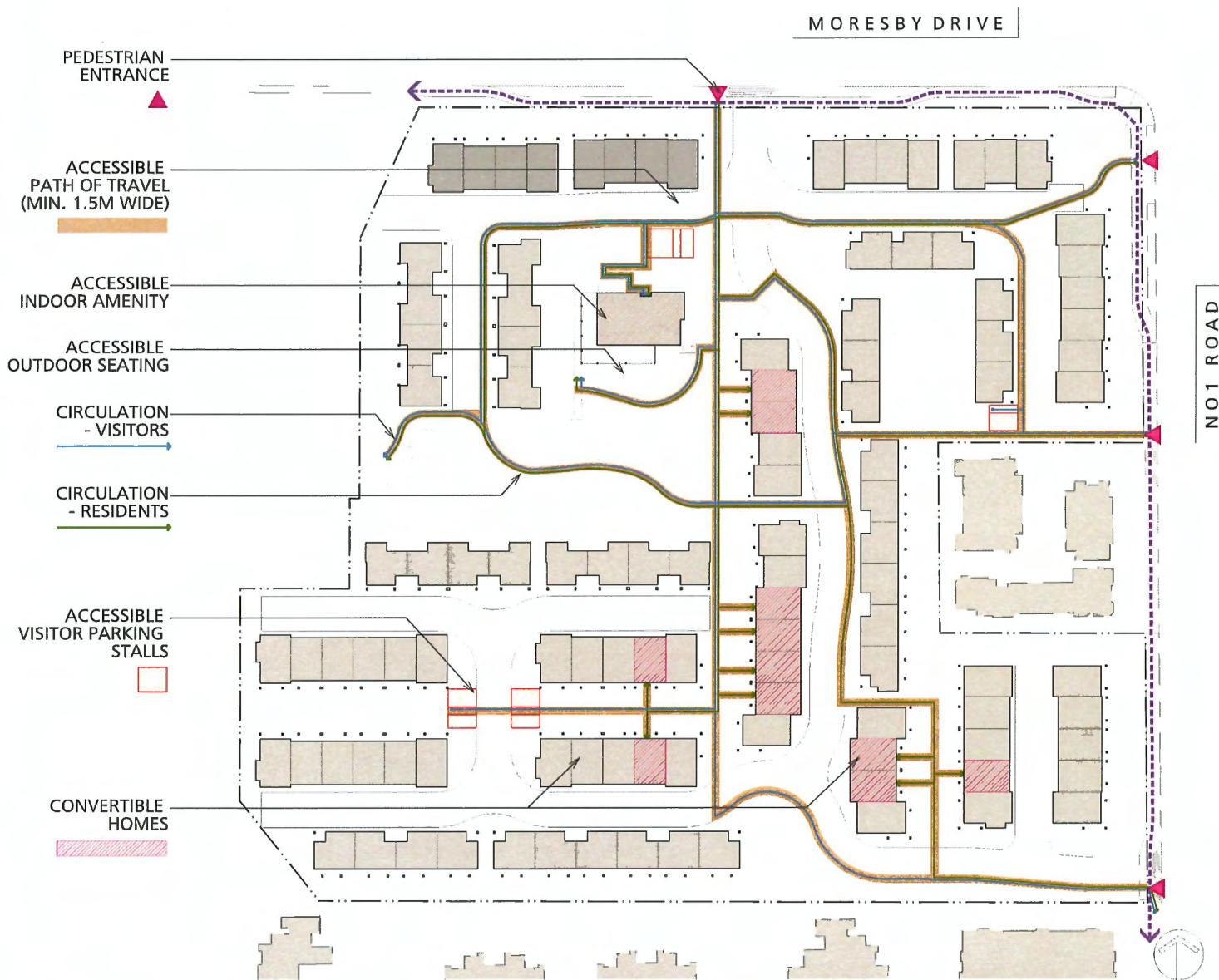


Tree preservation

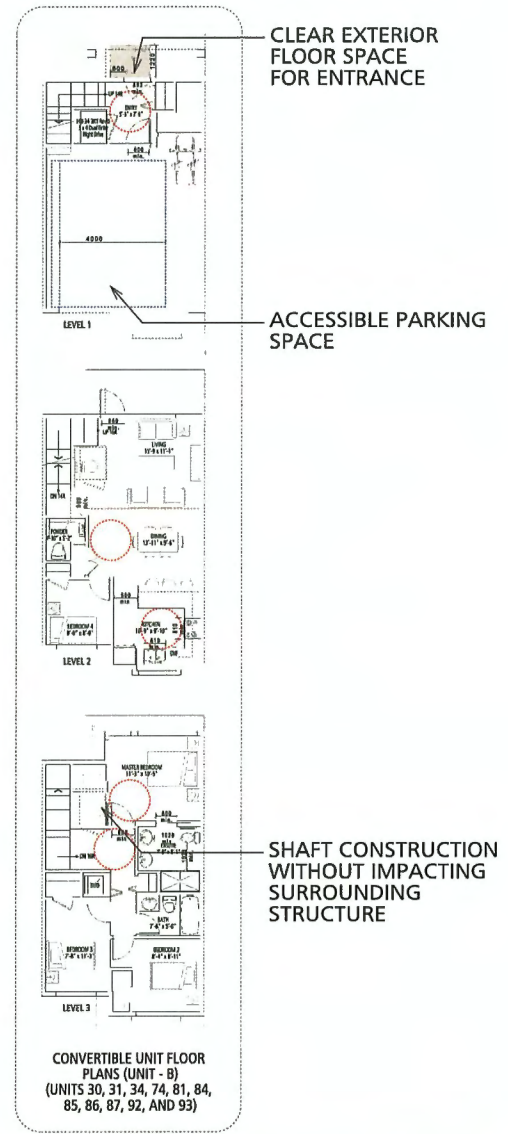
QUILCHENA PARK ESTATES for Western Construction and Citimark by Fougere Architecture Inc. and VDZ + Associates

PUBLIC REALM & SITE CIRCULATION





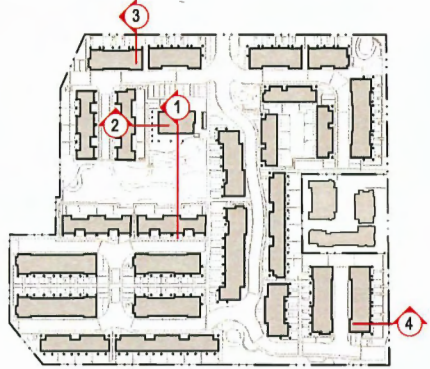
ACCESSIBILITY STRATEGY



SITE GRADING , CPTED



SECTION 1 - THROUGH CENTRAL OPEN SPACE



SECTION 2 - THROUGH RAISED YARDS

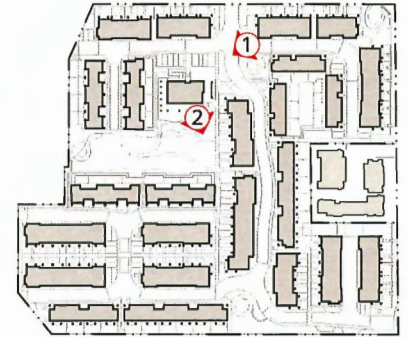


SECTION 3 - THROUGH MOORSBY DRIVE



SECTION 4 - THROUGH NO.1 ROAD

PERSPECTIVES



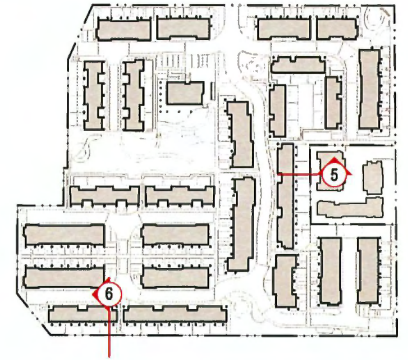
① AMENITY BUILDING



② COMMON OUTDOOR OPENSOURCE

QUILCHENA PARK ESTATES for Western Construction and Citimark by Fougere Architecture Inc. and VDZ + Associates

SITE INTERFACES

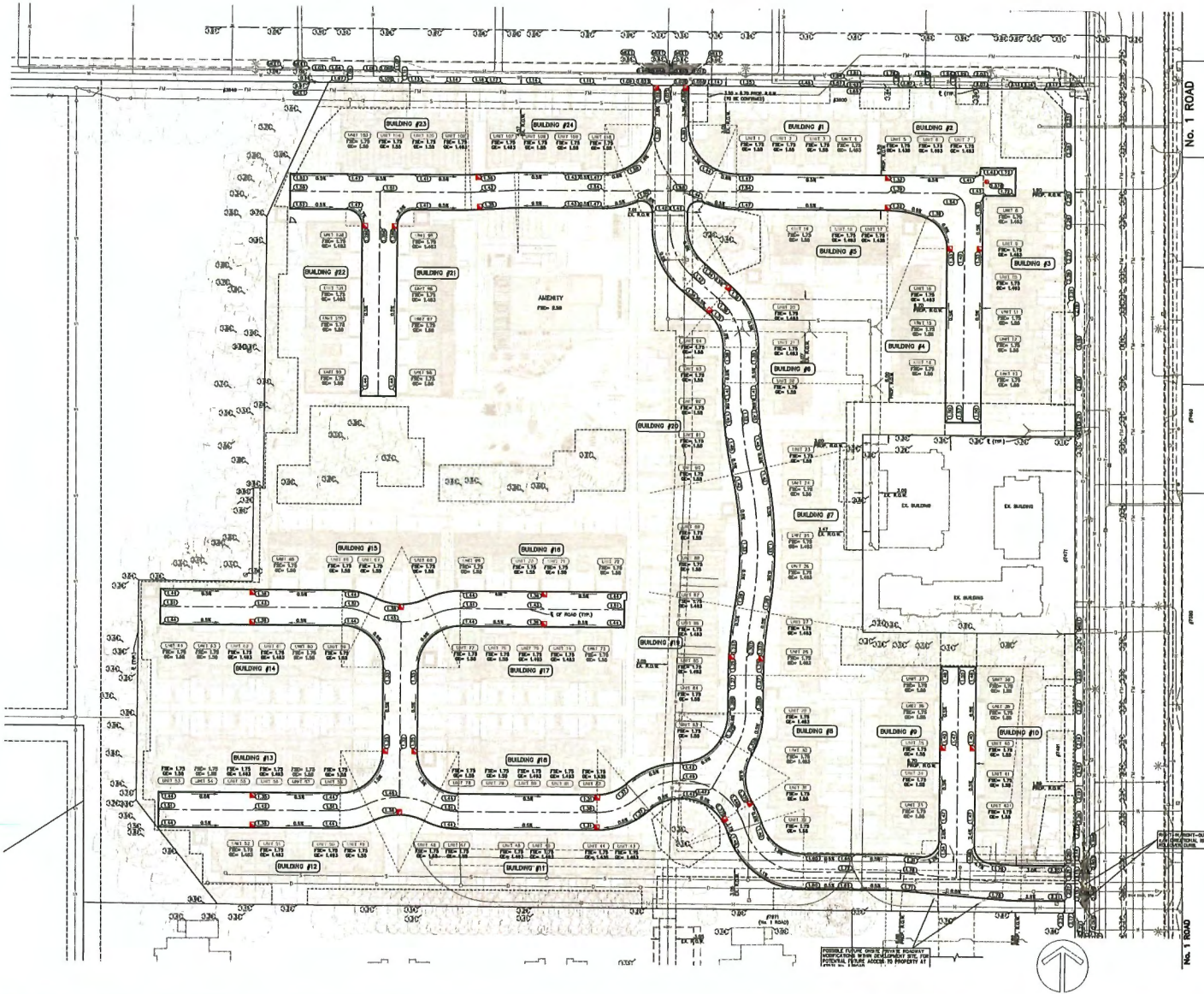


SECTION 5



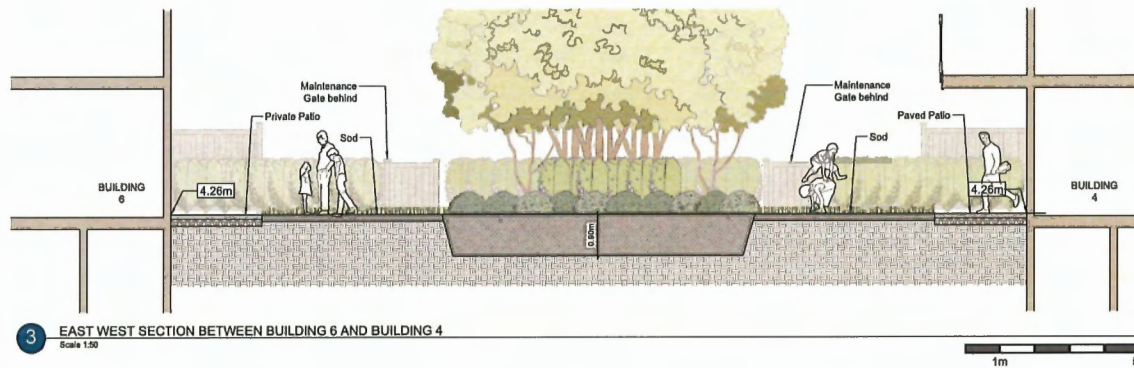
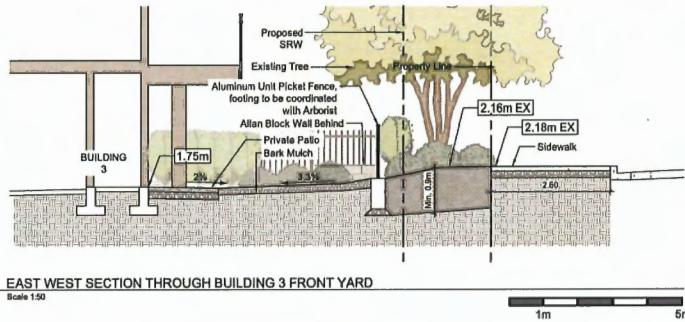
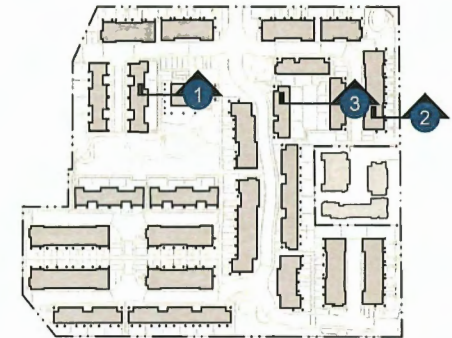
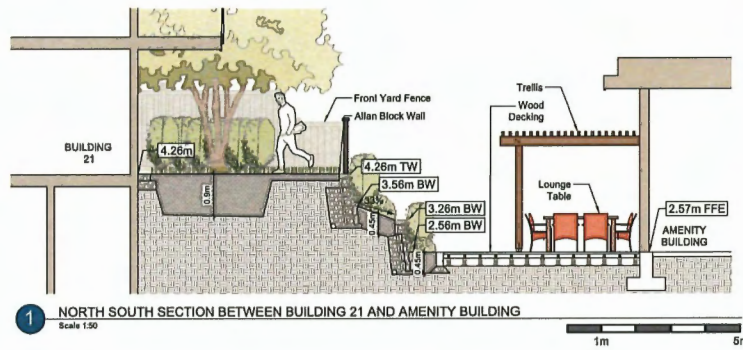
SECTION 6

SITE GRADING

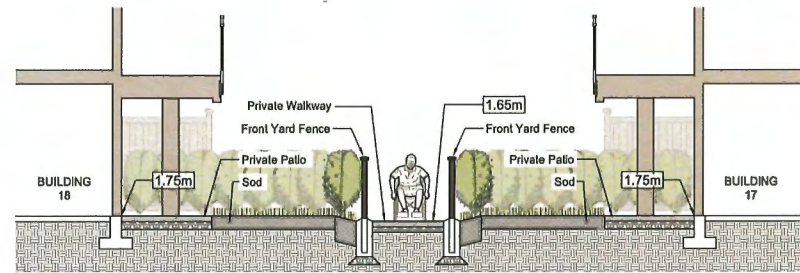


QUILCHENA PARK ESTATES for Western Construction and Citimark by Fougere Architecture Inc. and VDZ + Associates

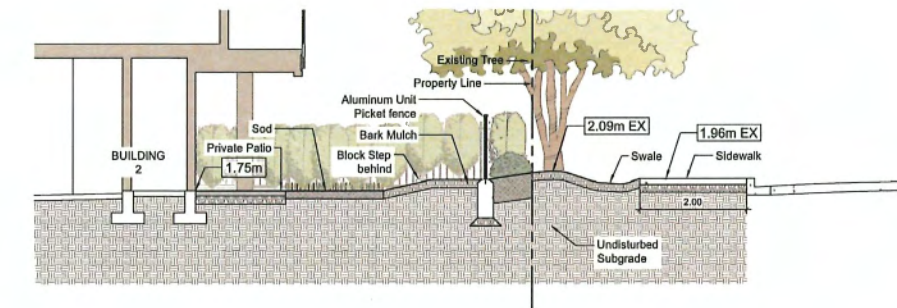
SECTIONS



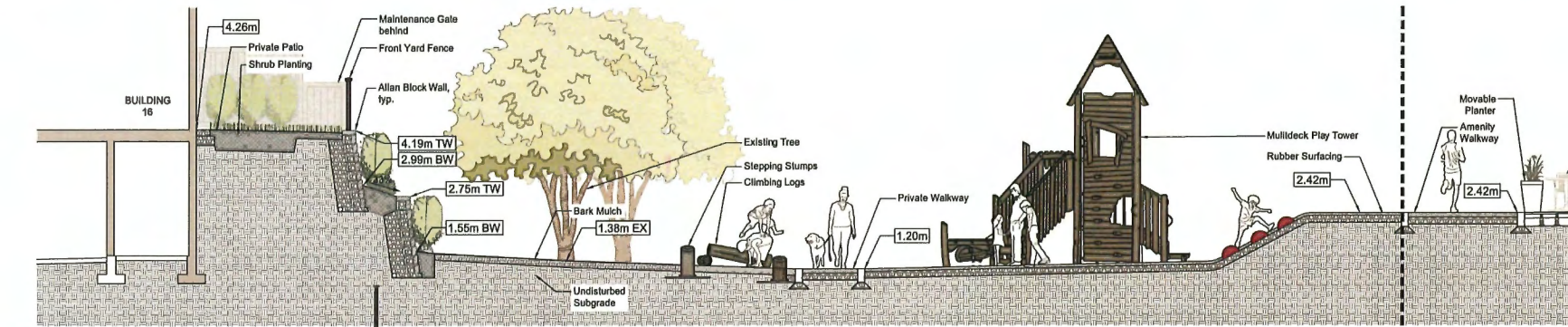
SECTIONS



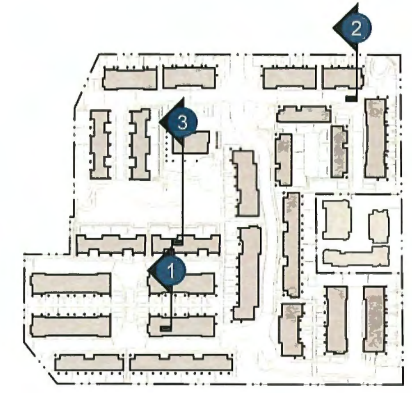
1 NORTH SOUTH SECTION BETWEEN BUILDING 22 AND BUILDING 21
Scale 1:50
1m 5m



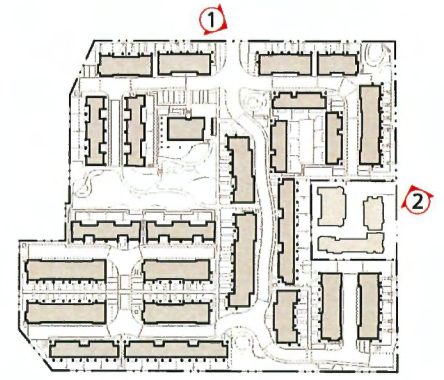
2 NORTH SOUTH SECTION THROUGH BUILDING 2 FRONT YARD
Scale 1:50
1m 5m



3 NORTH SOUTH SECTION THROUGH OUTDOOR AMENITY SPACE
Scale 1:50
1m 5m



STREETSCAPE



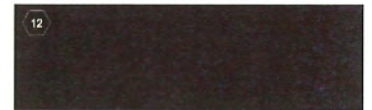
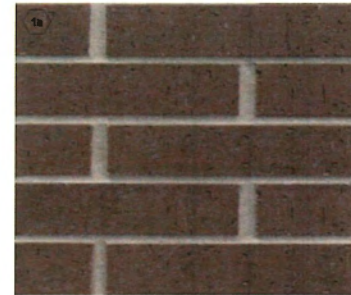
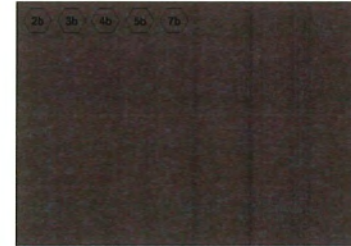
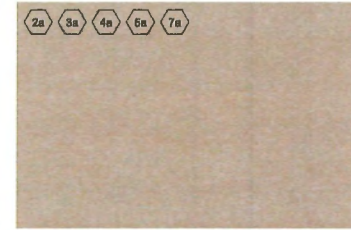
① VIEW FROM MORESBY DRIVE



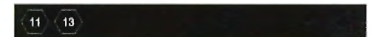
② VIEW FROM NO.1 ROAD

QUILCHENA PARK ESTATES for Western Construction and Citimark by Fougere Architecture Inc. and VDZ + Associates

BUILDING MASSING & MATERIALS



AMENITY BUILDING



QUILCHENA PARK ESTATES for Western Construction and Citimark by Fougere Architecture Inc. and VDZ + Associates

ENERGY AND SUSTAINABILITY



- DEVELOPMENT WILL MEET ENERGY TARGET STEP 3 + EL4.
- GROUND SOURCE HEAT PUMPS FOR SPACE HEATING AND COOLING.
- HIGH EFFICIENCY ENERGY RECOVERY VENTILATORS (ERV'S) FOR FRESH AIR DISTRIBUTION.
- HIGH EFFICIENCY ELECTRIC WATER HEATERS.
- HIGH EFFICIENCY DOUBLE GLAZED PVC WINDOWS AND DOORS.
- HIGH THERMAL RESISTANCE INSULATION
R-24 EXTERIOR WALL INSULATION.
R-50 ATTIC INSULATION
R-15 SLAB-ON-GRADE INSULATION
- HIGH EFFICIENT LED LIGHTING THROUGHOUT.
- HIGH QUALITY AIR BARRIER CONSTRUCTION AND QUALITY CONTROL MEASURES.
- HIGH EFFICIENCY IRRIGATION SYSTEM.
- LEVEL 2 EV CHARGING PLUG-INS FOR ALL RESIDENTIAL CAR STALLS.

QUILCHENA PARK ESTATES for Western Construction and Citimark by Fougere Architecture Inc. and VDZ + Associates

PLANTING & MATERIALS PALETTE



Azalea 'Kirin'



Hebe pinguifolia 'Sutherlandii'



Lonicera acuminata



Corylopsis pauciflora



Cornus sericea



Sedum 'Autumn Joy'



Astrantia major



Escallonia 'Newport Dwarf'



Stipa tenuissima



Echinacea purpurea



Clematis armandii



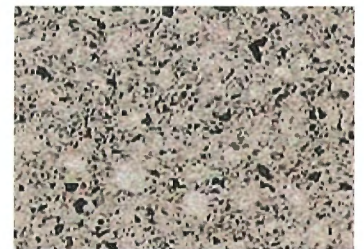
Rubber Surfacing



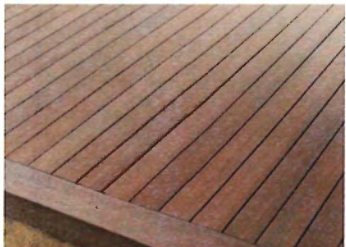
Wood Fibar



Stamped Asphalt



Concrete



Wood Decking



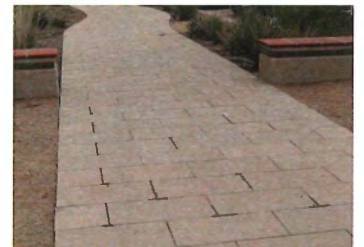
Stepping Stumps



Slab Path



Permeable Pavers



Unit Pavers

TREE PALETTE



Acer griseum



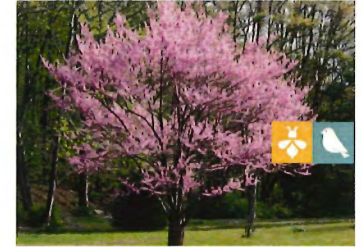
Acer japonicum



Arbutus unedo 'Compacta'



Cedrus deodara



Cercis canadensis 'RNI-RCC3'



Chamaecyparis obtusa 'Gracilis'



Cornus nuttallii



Cornus kousa 'Satomi'



Davidia involucrata



Fraxinus americana 'Junginger'



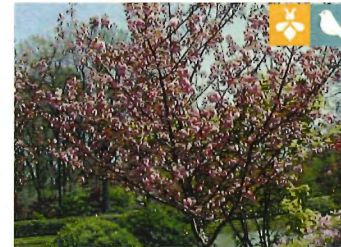
Magnolia kobus stellata



Picea pungens 'Hoopsii'



Pinus contorta



Prunus Serrulata 'Kwanzan'



Styrax japonicus 'JFS-D'



QUILCHENA PARK ESTATES for Western Construction and Citimark by Fougere Architecture Inc. and VDZ + Associates