

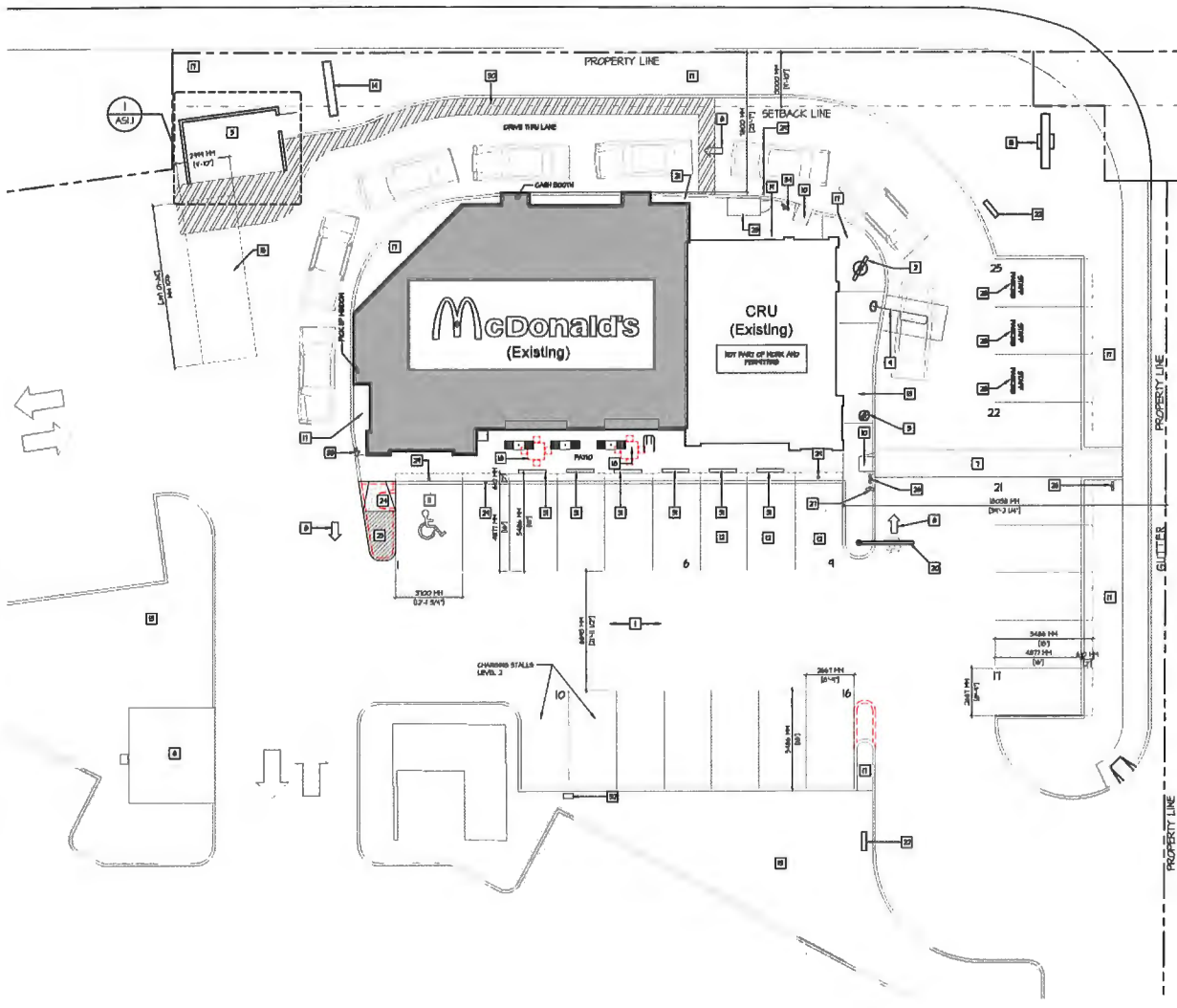


McDonald's – Cambie & Shell

#115 – 10700 Cambie Rd., Richmond, BC

Lovick Scott Architects

Cambie Road



Shared Access

PROJECT STATISTICS

PROPERTY NAME: BURNABY
CITY OF: RICHMOND
LEGAL ADDRESS: LOT 1100 30 BLK 24 RS IN PL EXCEPT EXCEPT DCP/FRM
CDM ADDRESS: 11-100 LAMBIE ROAD, RICHMOND, BC
OWNER: CA- AND OWNED COMMERCIAL
LOT CHARACTER: NO CHANGE
SETBACKS: 10.7M NORTH (EXISTING 8.5M)
DRIVE THRU AREA: (EXISTING) NO CHANGE
DRIVE THRU AREA: (EXISTING) NO CHANGE
McDONALD'S: 2,038.00 SQFT (228.30 X 90.00)
ADJACENT CRU: 1,200.00 SQFT (11.00 X 50.00)
TOTAL PL. AREA: 3,238.00 SQFT (323.00 SQM)

USE: RESTAURANT & NO CHANGE

ELEVATOR RISE	ALLOWED	EXISTING (NO CHANGE)
NORTH - CAMBIE ROAD	3.0 m (R-307)	1.00 m (D0-11)
EAST - ACCESS ROAD	3.0 m (R-307)	0.00 m (D0-11)
WEST	3.0 m (R-307)	0.00 m (R-307)
SOUTH	3.0 m (R-307)	0.48 m (R-307)

SETBACKS:

ALLOWABLE	PROPOSED	EXISTING
FRONT	3.0 m	1.00 m
REAR	3.0 m	1.00 m
SIDE	3.0 m	1.00 m

DRIVE THRU:

ALLOWABLE	PROPOSED	EXISTING
LENGTH	10.7 m	8.5 m
WIDTH	3.0 m	3.0 m

CRU (EXISTING):

ALLOWABLE	PROPOSED	EXISTING
LENGTH	11.0 m	11.0 m
WIDTH	50.0 m	50.0 m

CHARGING STALLS:

CLASS	PROVIDED	REQUIREMENTS
CLASS 1	2	2 SPACES PER 100 SQM GROSS FLOOR AREA
CLASS 2	2	2 SPACES PER 100 SQM GROSS FLOOR AREA

NO.	REVISION	DATE	DESCRIPTION
1	ISSUED FOR P.P.		
2	ISSUED FOR O.P.		
3	ISSUED FOR O.P.		
4	ISSUED FOR O.P.		
5	ISSUED FOR O.P.		
6	ISSUED FOR O.P.		
7	ISSUED FOR O.P.		
8	ISSUED FOR O.P.		
9	ISSUED FOR O.P.		
10	ISSUED FOR O.P.		
11	ISSUED FOR O.P.		
12	ISSUED FOR O.P.		
13	ISSUED FOR O.P.		
14	ISSUED FOR O.P.		
15	ISSUED FOR O.P.		
16	ISSUED FOR O.P.		
17	ISSUED FOR O.P.		
18	ISSUED FOR O.P.		
19	ISSUED FOR O.P.		
20	ISSUED FOR O.P.		
21	ISSUED FOR O.P.		
22	ISSUED FOR O.P.		
23	ISSUED FOR O.P.		
24	ISSUED FOR O.P.		
25	ISSUED FOR O.P.		
26	ISSUED FOR O.P.		
27	ISSUED FOR O.P.		
28	ISSUED FOR O.P.		
29	ISSUED FOR O.P.		
30	ISSUED FOR O.P.		
31	ISSUED FOR O.P.		
32	ISSUED FOR O.P.		
33	ISSUED FOR O.P.		
34	ISSUED FOR O.P.		
35	ISSUED FOR O.P.		
36	ISSUED FOR O.P.		
37	ISSUED FOR O.P.		
38	ISSUED FOR O.P.		
39	ISSUED FOR O.P.		
40	ISSUED FOR O.P.		
41	ISSUED FOR O.P.		
42	ISSUED FOR O.P.		
43	ISSUED FOR O.P.		
44	ISSUED FOR O.P.		
45	ISSUED FOR O.P.		
46	ISSUED FOR O.P.		
47	ISSUED FOR O.P.		
48	ISSUED FOR O.P.		
49	ISSUED FOR O.P.		
50	ISSUED FOR O.P.		

McDonald's
 McDONALD'S RESTAURANTS OF CANADA LIMITED
 4400 STILL CREEK DRIVE, BURNABY, B.C. V5C 1G6

SITE KEY NOTES

- EXISTING DRIVEWAYS TO BE REPAIRED AND PAINTED WITH CURB AND PARKING LINES, ALSO OR DENSE NOTED. SEE SITE PLAN NOTES.
- NEW DRIVEWAY.
- PER-SIDE DRIVEWAY.
- DRIVE RAMP.
- DRIVEWAY ENCLOSURE.
- RE-ELECTRIC CHARGING STATIONS.
- CROSS WALK WITH HANDRAILS.
- PAVEMENT PARALLEL.
- PARALLEL LOOP.
- HIC RAMP.
- HIC PARKING SPACE.
- PARKING RESERVED FOR ADJACENT CRU.
- LANDSCAPE.
- FREE STANDING SIGN.
- PYLON SIGN.
- LOADING AREA.
- RE LANDSCAPE.
- PARO FURNITURE TO BE REMOVED AND REPLACED WITH NEW AS SHOWN.
- GRASS PITCH.
- MOBILE ENTRY DETECTOR IN - SUPPLIED BY SIGN MANUFACTURER.
- NEWSPAPER STORAGE BENCH.
- DIRECTIONAL SIGN.
- IN CLASS 1/2 BICYCLE PARKING SPACES WITH WATER PROOF DURA BIKER LOCKER (CLIP GRAB) OR BICYCLE.
- IN ACCESSIBLE RAMP.
- IN PAINTED LINES.
- IN SIGN "CAUTION WATCH FOR CURB" FREE PATTERNS DRAWING PACKAGE.
- IN SIGN "CAUTION PEDESTRIAN CROSSING" FREE PATTERNS DRAWING PACKAGE.
- PAVEMENTS PARALLEL.
- IN BOLLARD CAN BARRIERS COVER (SEE DETAIL 208.01).
- IN YELLOW PAINTED STRIPES.
- IN CONCRETE STEEL STOP.
- IN ELECTRIC VEHICLES CHARGER.
- IN SIGN "CAUTION PEDESTRIAN CROSSING" FREE PATTERNS DRAWING PACKAGE.
- IN SIGN "CAUTION WATCH FOR CURB" FREE PATTERNS DRAWING PACKAGE.

SCALE: 1" = 10'-0"

LOVICK SCOTT ARCHITECTS

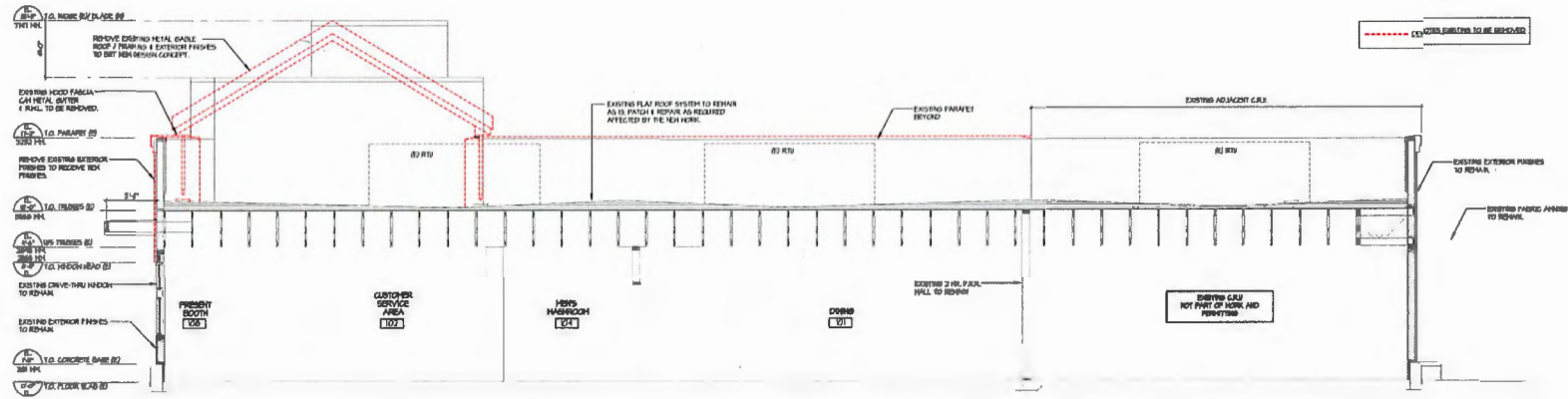
3707 1ST AVENUE
 BURNABY, BC V5C 3V6
 ADMIN @ LOVICKSCOTT.COM
 604 298 3700 WWW.LOVICKSCOTT.COM
 MEMBER OF THE AIBC, AAA, SAA, MAA
 REGISTERED B.C.

McDonald's - Cambie & Shell
 #115 - 10700 CAMBIE ROAD,
 RICHMOND, BC

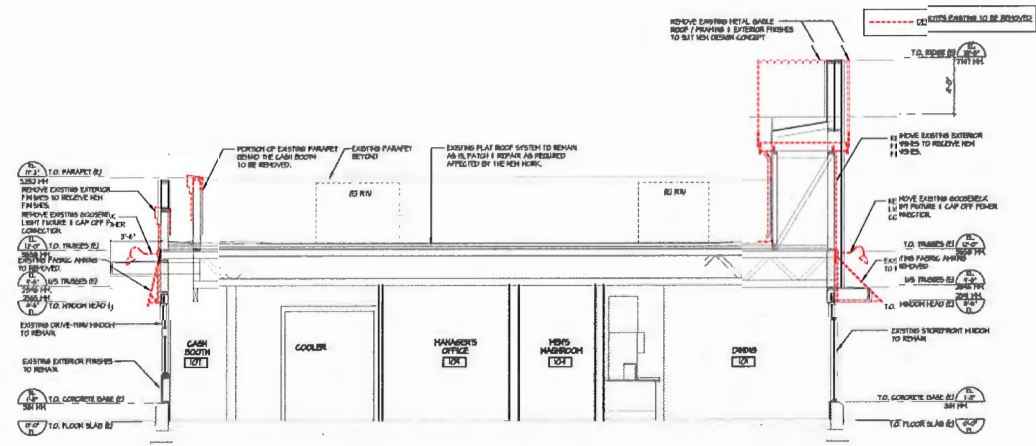
SITE PLAN
PLAN # 4

PROJECT NO: 18-012
 DRAWING NO: A51.0
 SCALE: 1" = 10'-0"
 DATE: MARCH 2018

Cambie & Shell - 18-012



1 BUILDING SECTION -A
ALL SCALE 1/8"=1'-0"



2 BUILDING SECTION -B
ALL SCALE 1/8"=1'-0"

REV	DATE	DESCRIPTION
1		
2		
3		
4		
5		
6		
7		
8		
9		
10		
11		
12		
13		
14		
15		
16		
17		
18		
19		
20		
21		
22		
23		
24		
25		
26		
27		
28		
29		
30		
31		
32		
33		
34		
35		
36		
37		
38		
39		
40		
41		
42		
43		
44		
45		
46		
47		
48		
49		
50		

McDonald's
 McDONALD'S RESTAURANTS OF CANADA LIMITED
 4400 STILL CREEK DRIVE, BURNABY, B.C. V5C 6G6

CONTACT US TODAY! WE'LL ASSIST YOU BY THE DESIGNER'S SCALE.
 ARCHITECT

LOVICK SCOTT ARCHITECTS
 3707 1ST AVENUE
 VANCOUVER, BC V6C 3K6
 ADMIN@LOVICKSCOTT.COM
 604 288 3700 WWW.LOVICKSCOTT.COM
 MEMBER OF THE AIBC, AIA, SAA, MAA
 ARCHITECTS

15
 PROJECT
McDonald's - Cambie & Shell
 #115 - 10700 CAMBIE ROAD,
 RICHMOND, BC

DATE: NOVEMBER 2016

PROJECT NUMBER	DRAWING NUMBER
16-012	A3.0
SCALE	1/4" = 1'-0"
DATE	NOVEMBER 2016

Cambie & Shell - 16-012



Location	Description	Project No.	Project Name	Author	Date	Revised
Richmond	McDonald's	18-012	McDonald's	Mark English Manager	June 11, 2018	November 27, 2018

REV	DATE	DESCRIPTION	BY	DATE	DESCRIPTION
1		ISSUED FOR I.P.			
2		ISSUED FOR I.P.			
3		ISSUED FOR I.P.			
4		ISSUED FOR I.P.			
5		ISSUED FOR I.P.			
6		ISSUED FOR I.P.			
7		ISSUED FOR I.P.			
8		ISSUED FOR I.P.			
9		ISSUED FOR I.P.			
10		ISSUED FOR I.P.			
11		ISSUED FOR I.P.			
12		ISSUED FOR I.P.			
13		ISSUED FOR I.P.			
14		ISSUED FOR I.P.			
15		ISSUED FOR I.P.			
16		ISSUED FOR I.P.			
17		ISSUED FOR I.P.			
18		ISSUED FOR I.P.			
19		ISSUED FOR I.P.			
20		ISSUED FOR I.P.			
21		ISSUED FOR I.P.			
22		ISSUED FOR I.P.			
23		ISSUED FOR I.P.			
24		ISSUED FOR I.P.			
25		ISSUED FOR I.P.			
26		ISSUED FOR I.P.			
27		ISSUED FOR I.P.			
28		ISSUED FOR I.P.			
29		ISSUED FOR I.P.			
30		ISSUED FOR I.P.			
31		ISSUED FOR I.P.			
32		ISSUED FOR I.P.			
33		ISSUED FOR I.P.			
34		ISSUED FOR I.P.			
35		ISSUED FOR I.P.			
36		ISSUED FOR I.P.			
37		ISSUED FOR I.P.			
38		ISSUED FOR I.P.			
39		ISSUED FOR I.P.			
40		ISSUED FOR I.P.			
41		ISSUED FOR I.P.			
42		ISSUED FOR I.P.			
43		ISSUED FOR I.P.			
44		ISSUED FOR I.P.			
45		ISSUED FOR I.P.			
46		ISSUED FOR I.P.			
47		ISSUED FOR I.P.			
48		ISSUED FOR I.P.			
49		ISSUED FOR I.P.			
50		ISSUED FOR I.P.			
51		ISSUED FOR I.P.			
52		ISSUED FOR I.P.			
53		ISSUED FOR I.P.			
54		ISSUED FOR I.P.			
55		ISSUED FOR I.P.			
56		ISSUED FOR I.P.			
57		ISSUED FOR I.P.			
58		ISSUED FOR I.P.			
59		ISSUED FOR I.P.			
60		ISSUED FOR I.P.			
61		ISSUED FOR I.P.			
62		ISSUED FOR I.P.			
63		ISSUED FOR I.P.			
64		ISSUED FOR I.P.			
65		ISSUED FOR I.P.			
66		ISSUED FOR I.P.			
67		ISSUED FOR I.P.			
68		ISSUED FOR I.P.			
69		ISSUED FOR I.P.			
70		ISSUED FOR I.P.			
71		ISSUED FOR I.P.			
72		ISSUED FOR I.P.			
73		ISSUED FOR I.P.			
74		ISSUED FOR I.P.			
75		ISSUED FOR I.P.			
76		ISSUED FOR I.P.			
77		ISSUED FOR I.P.			
78		ISSUED FOR I.P.			
79		ISSUED FOR I.P.			
80		ISSUED FOR I.P.			
81		ISSUED FOR I.P.			
82		ISSUED FOR I.P.			
83		ISSUED FOR I.P.			
84		ISSUED FOR I.P.			
85		ISSUED FOR I.P.			
86		ISSUED FOR I.P.			
87		ISSUED FOR I.P.			
88		ISSUED FOR I.P.			
89		ISSUED FOR I.P.			
90		ISSUED FOR I.P.			
91		ISSUED FOR I.P.			
92		ISSUED FOR I.P.			
93		ISSUED FOR I.P.			
94		ISSUED FOR I.P.			
95		ISSUED FOR I.P.			
96		ISSUED FOR I.P.			
97		ISSUED FOR I.P.			
98		ISSUED FOR I.P.			
99		ISSUED FOR I.P.			
100		ISSUED FOR I.P.			

McDonald's
 McDONALD'S RESTAURANTS OF CANADA LIMITED
 4400 STILL CREEK DRIVE, BURNABY, B.C. V5C 6G6

McDonald's - Cambie & Shell

McDonald's - Cambie & Shell



LOVICK SCOTT ARCHITECTS
 3707 1ST AVENUE
 BURNABY, BC V5C 3V8
 ADMIN@LOVICKSCOTT.COM
 604 295 3700 WWW.LOVICKSCOTT.COM
 MEMBER OF THE AIBC, AAA, SAA, MAA
 ARCHITECTURAL BOARD

McDonald's - Cambie & Shell

McDonald's - Cambie & Shell
 #115 - 10750 CAMBIE ROAD,
 RICHMOND, BC

PERSPECTIVES
 PLAN # 13

PROJECT NO. 18-012
 DRAWING NO. A24
 SCALE 1/4" = 1'-0"
 DATE MARCH 2018
 PROJECT # 40021
 APPROVED APR 26/2018

Cambie & Shell - 18-012

Examples of completed projects



McDonald's – Grandview Hwy.

2909 Grandview Hwy, Vancouver, B.C.



North View



before

South West view



before



West View



after

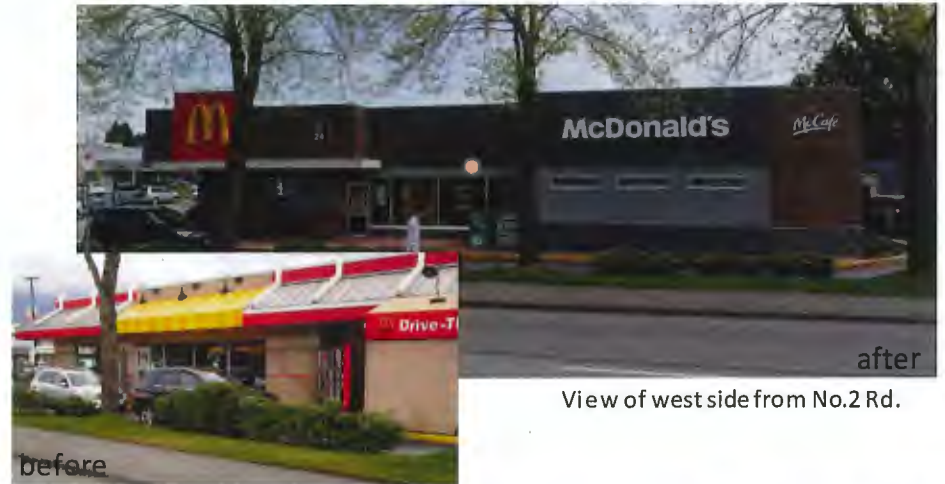
@drive-thru lane

McDonald's – Blundell

8140 No.2 Rd, Richmond, B.C.



after
View of north eastside



after
View of west side from No.2 Rd.



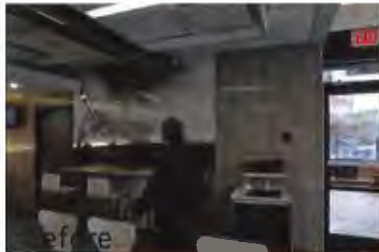
after
View of north side

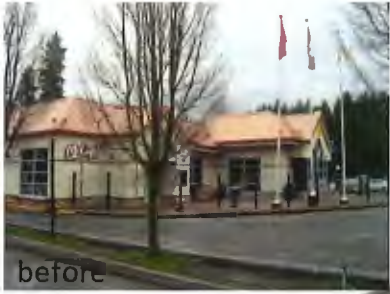


after
View of south west side from No.2 Rd.

McDonald's – Grandview Hwy.

2909 Grandview Hwy, Vancouver, B.C.
View of dining area





North West view



McDonald's – Fleetwood

15574 Fraser Hwy, Surrey, B.C.



North view



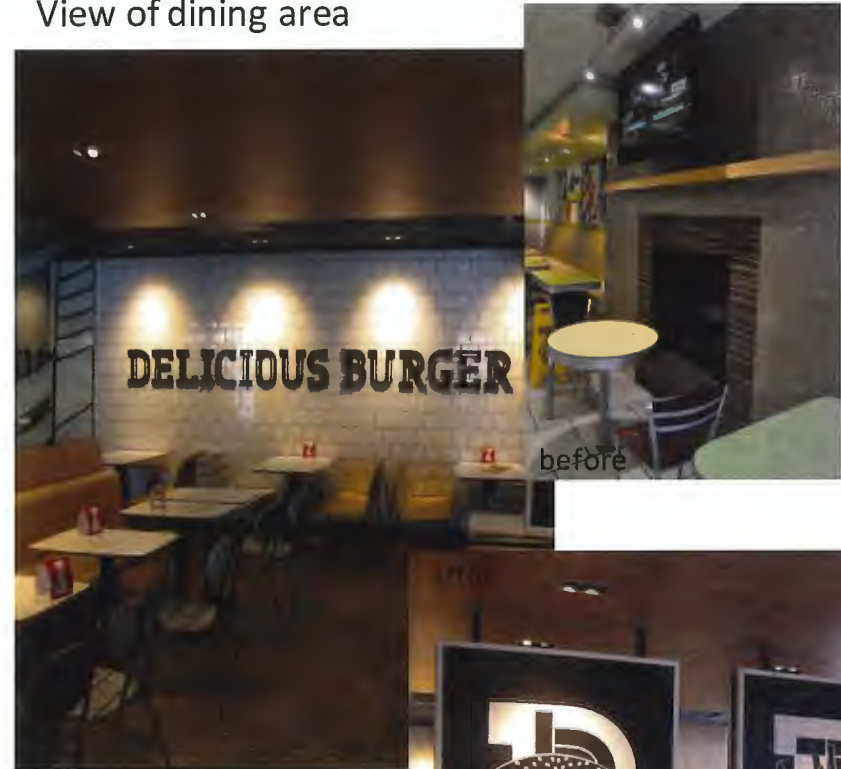
@drive-thru lane



McDonald's – Fleetwood

15574 Fraser Hwy, Surrey, B.C.

View of dining area





South East view



McDonald's – Pitt Meadows

12549 Harris Road, Pitt Meadows, B.C.



@drive-thru lane



North East view



McDonald's – Pitt Meadows

12549 Harris Road, Pitt Meadows, B.C.

View of dining area

