

Schedule 2 to the Minutes of the Public Hearing meeting of Richmond City Council held on Monday, May 15, 2023.

6851-6871 ELMBRIDGE WAY LANE DESIGN AMENDMENT



LANE TRAFFIC MANAGEMENT

WE ARE COMMITTED TO WORKING WITH ORA RESIDENTS & CITY OF RICHMOND ENGINEERING TO OBTAIN A LANE SOLUTION THAT WORKS FOR BOTH PARTIES.

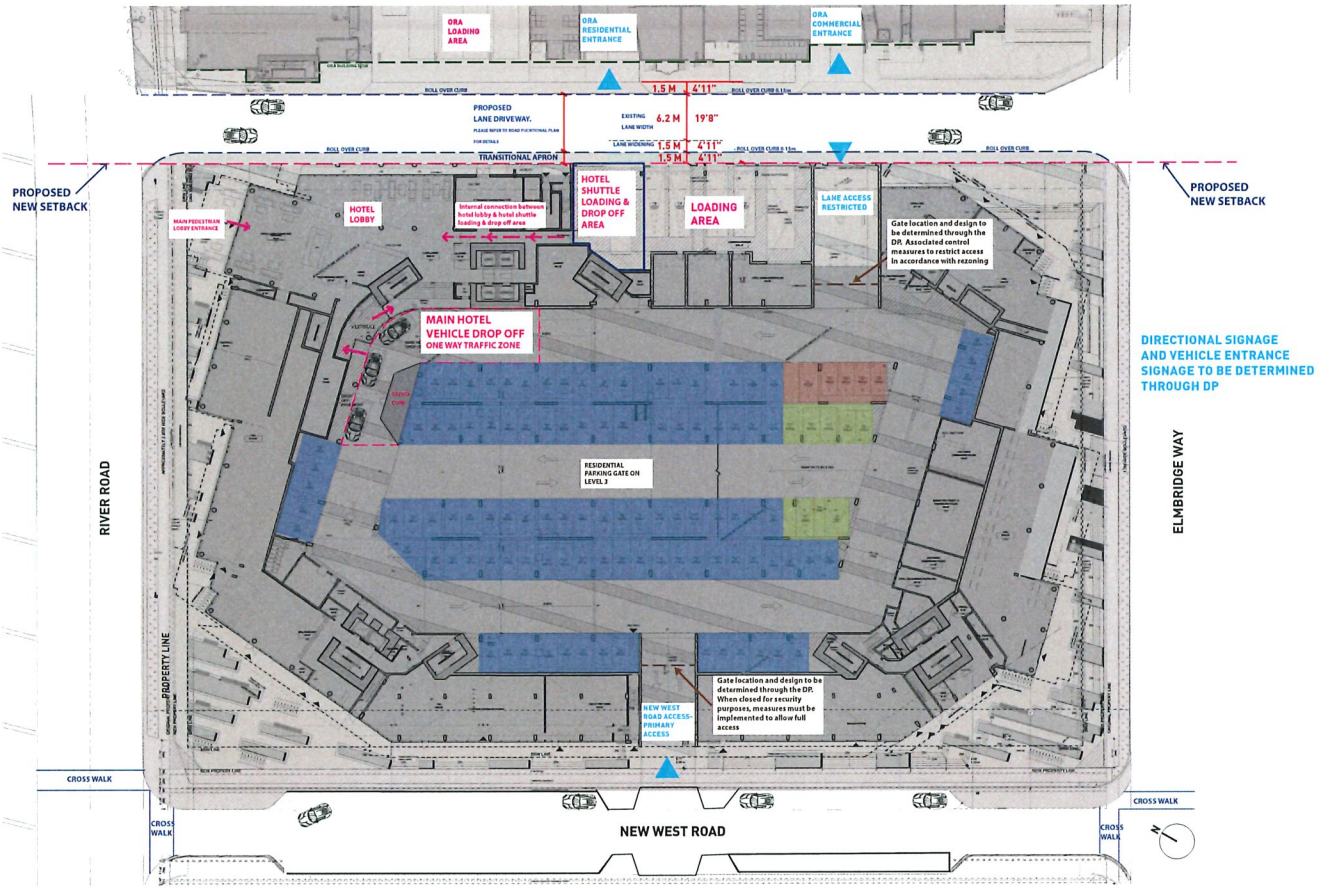
NEW TRANSPORTATION IMPROVEMENTS:

1. Lane widened by 1.5m for a total of **7.5M LANE WIDTH** to improve truck loading/maneuvering. Additional 1.5m roll over-transitional apron can help ease traffic flow
2. **HOTEL DROP-OFF MOVED** inside parkade to reduce traffic on lane
3. **BUS DROP-OFF** is accommodated on dedicated loading bay
4. New West Road as **ADDITIONAL HOTEL AND PRIMARY RESIDENTIAL ENTRANCE** to Ease Traffic on lane.

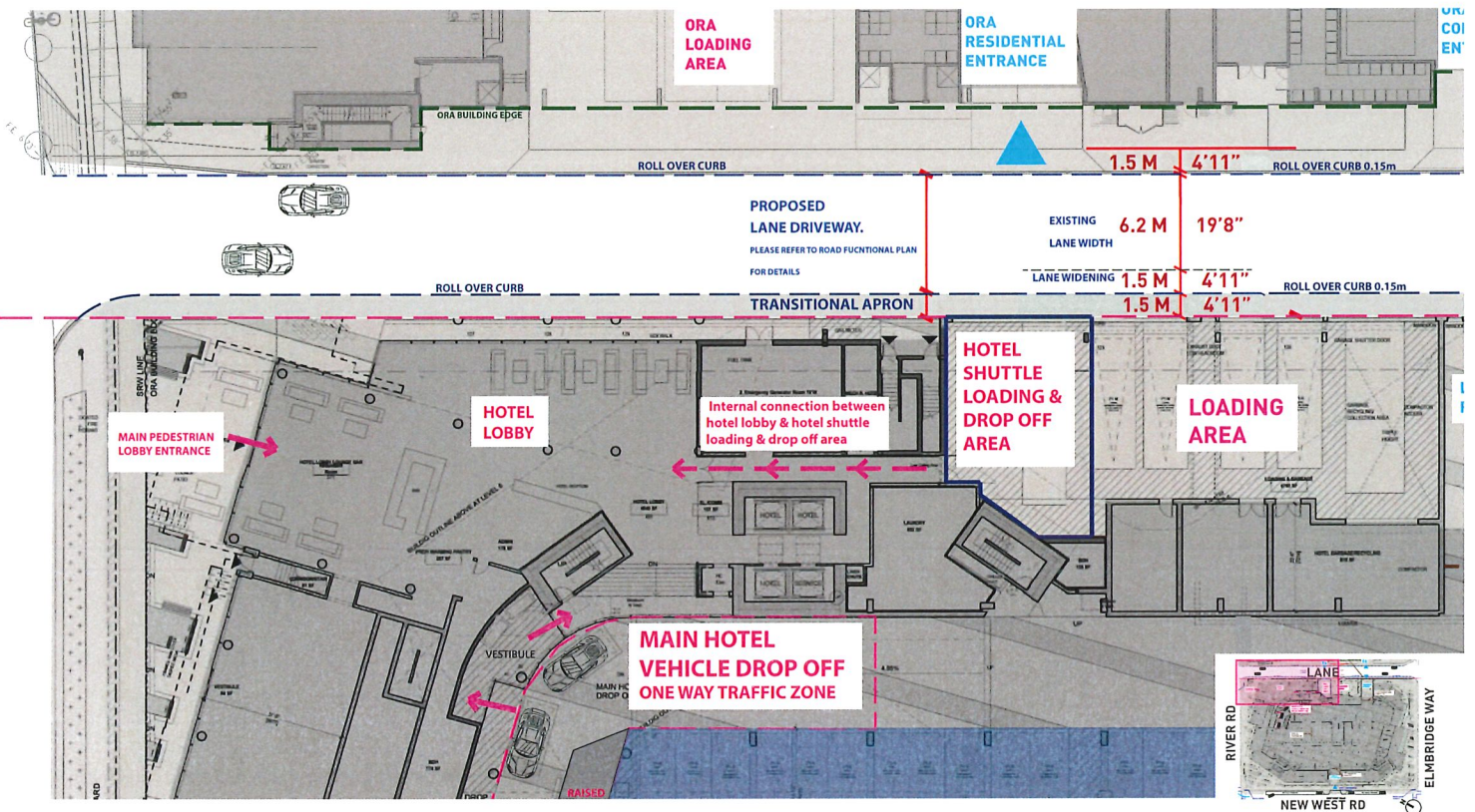
PROJECT ALSO INCLUDES:

- ALL Garbage Collection/Loading on site (NOT IN LANE)
- Parking reduced by 147 stalls (via TDM)
- Transit Pass subsidy for all residents & employees on site
- Car Pool/Car Share Provided

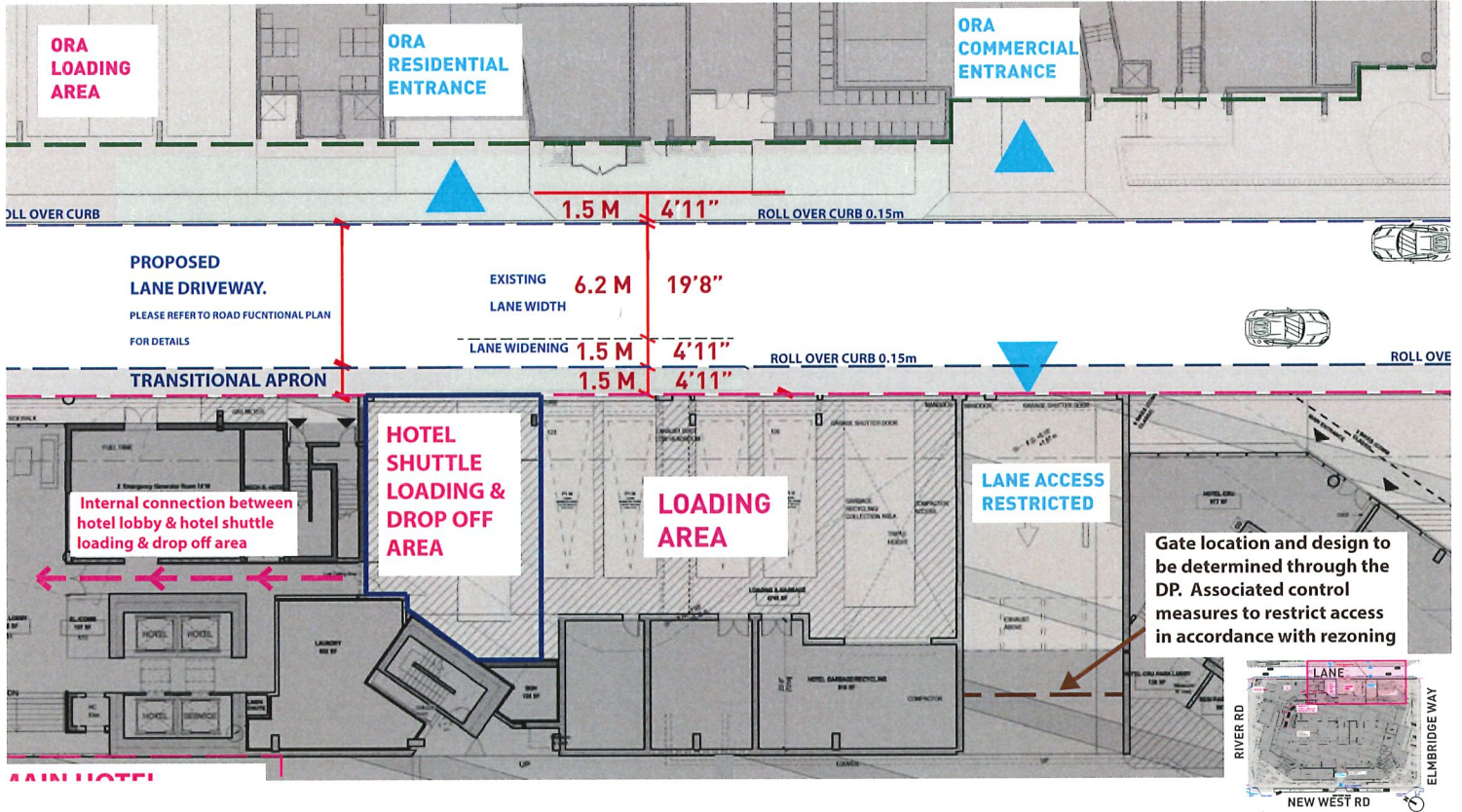
PROPOSED REVISED LANE CONFIGURATION, LOADING BAYS AND PARKING SEGREGATION OVERVIEW



MAIN HOTEL HOTEL DROP OFF IS MOVED INSIDE PARKADE, HOTEL SHUTTLE DROP OFF HAS BEEN ACCOMMODATED ON SITE, ALL DROP-OFFS ELIMINATED FROM LANE

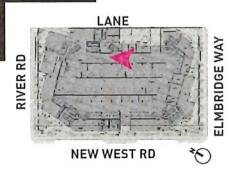
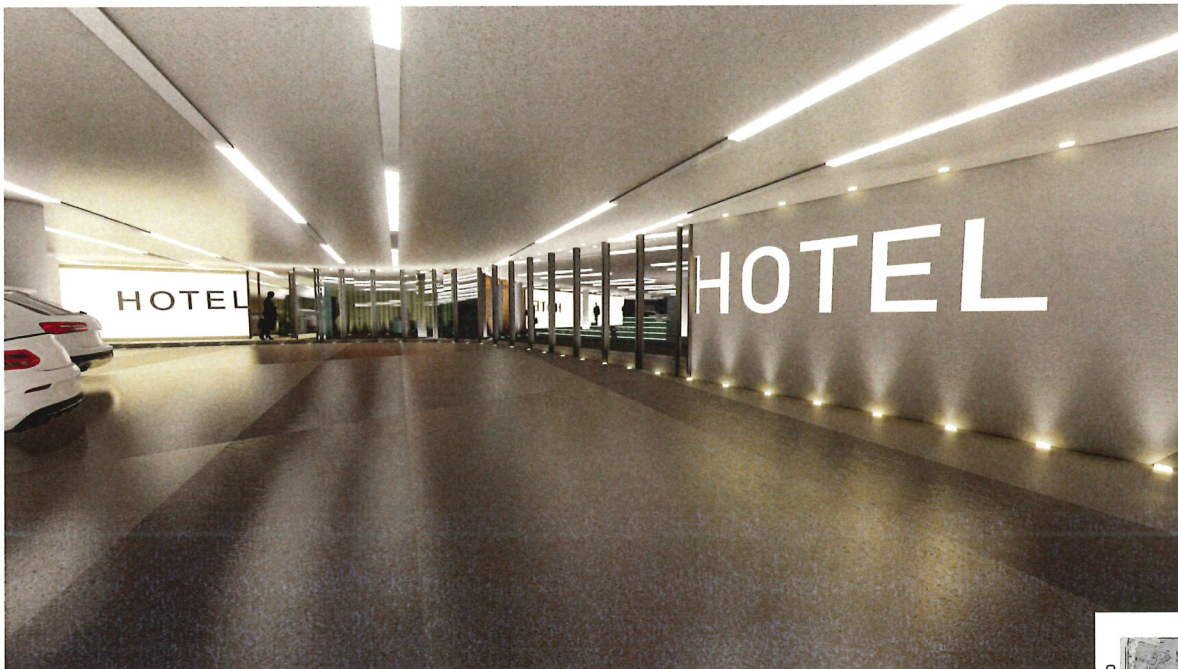


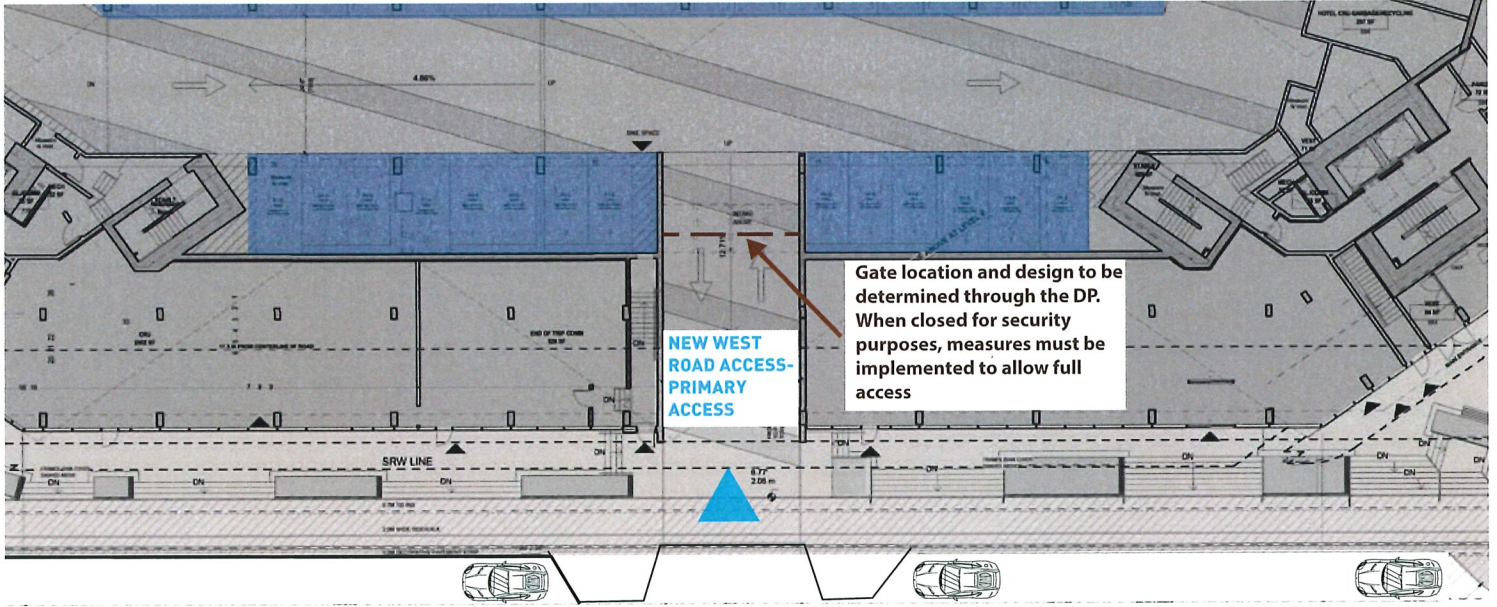
**LOADING-UNLOADING & GARBAGE PICKUP ENTIRELY ACCOMODATED ON SITE,
RESTRICTED ACCESS FROM LANE FOR RESIDENTS**



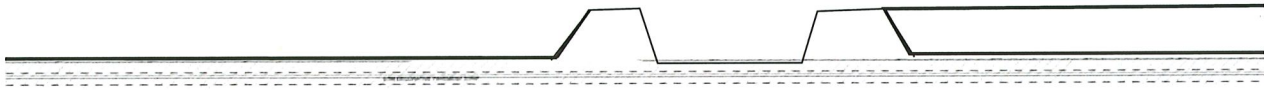
HOTEL DROP OFF

HOTEL DROP-OFF MOVED INTO PARKADE TO REDUCE LANE TRAFFIC



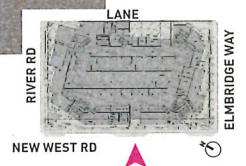


NEW WEST ROAD



NEW WEST ENTRY

NEW WEST PARKADE ENTRANCE TO ACT AS PRIMARY RESIDENTIAL ENTRANCE, DIRECTIONAL SIGNAGE AND VEHICLE ENTRANCE SIGNAGE TO BE DETERMINED THROUGH DP



NEW WEST ENTRY

**DIRECTIONAL SIGNANE AND VEHICLE ENTRANCE SIGNAGE TO
BE DETERMINED THROUGH DP**

