

**DUPLEX RESIDENTIAL  
5500-5502 Williams Rd.**

**DUPLEX RESIDENTIAL  
5506-5508 Williams Rd.**

**December 14, 2022**

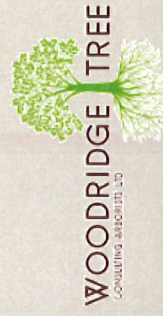


Schedule 1 to the Minutes of the  
Development Permit Panel  
meeting held on Wednesday,  
December 14, 2022



**VividGreen**  
architecture inc.

**DEVELOPMENT  
PERMIT 20-890821**







Tree Retention Plan  
for Construction at  
5506-5508 Williams Road  
Richmond, BC

Date: August 27, 2019

Tag	Species	DBH (cm)	TPZ (m)
590	<i>Prunus domestica</i>	16	n/a
591	<i>Prunus domestica</i>	16	n/a
592	<i>Prunus domestica</i>	41	2.46
593	<i>Pseudotsuga menziesii</i>	51	3.06
c1595	<i>Thuja plicata</i>	44	2.64
596	<i>Prunus serrulata</i>	34	1.44
597	<i>Prunus serrulata</i>	32	1.92
598	<i>Prunus serrulata</i>	37	2.22
599	<i>Prunus serrulata</i>	21	1.5

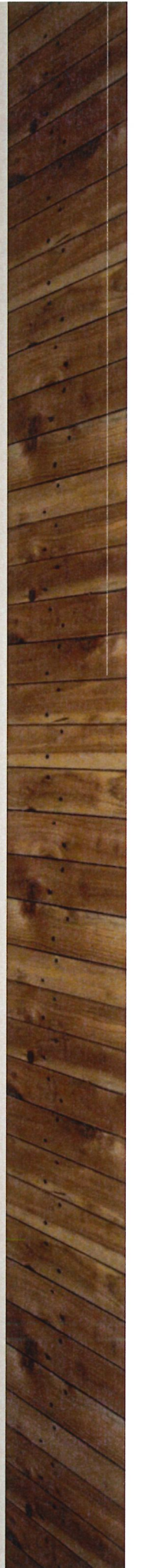
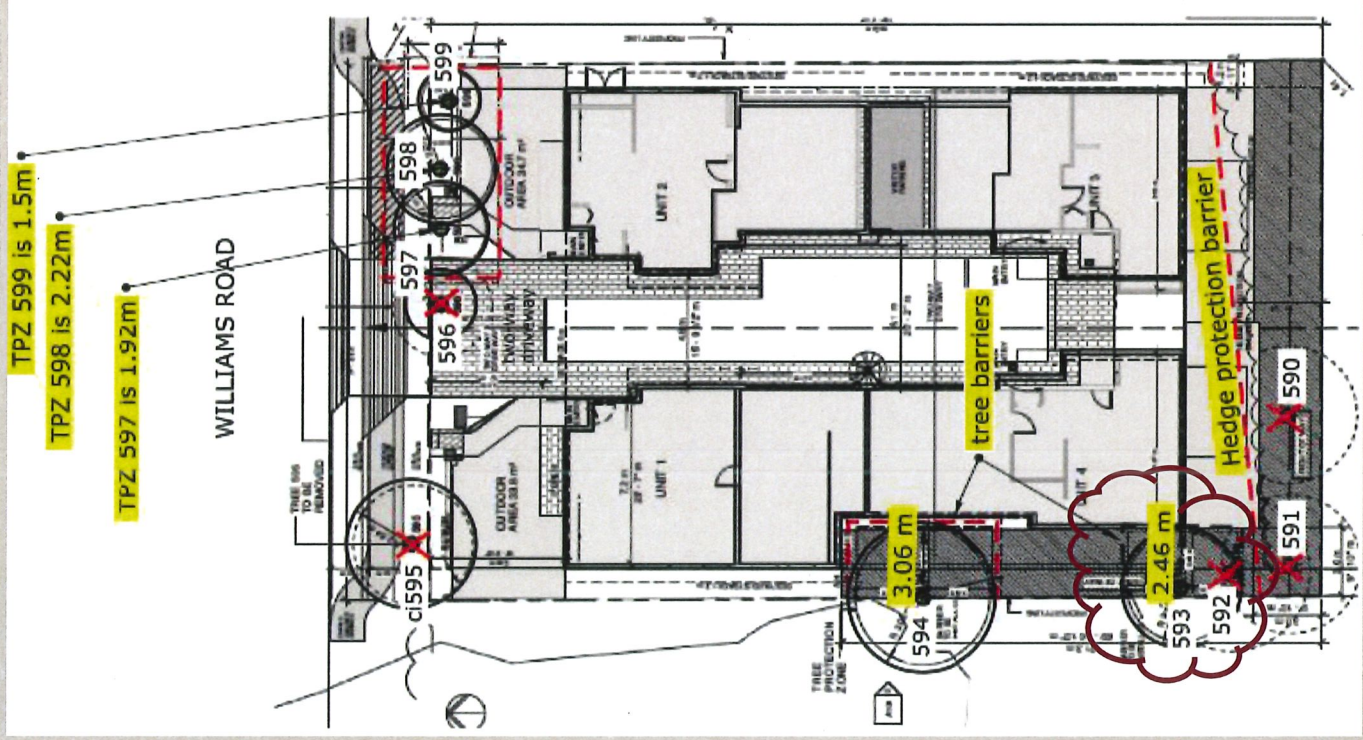
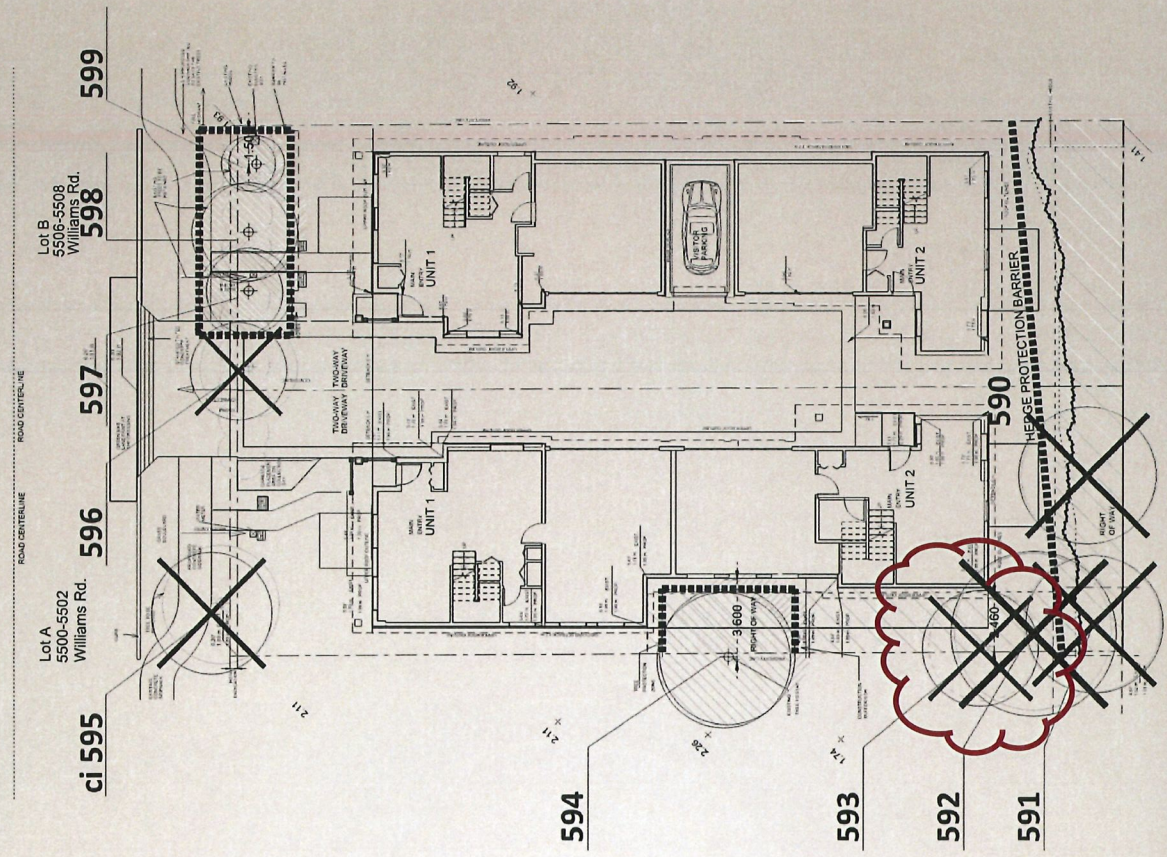
Note: Trees #590-592 are dead.

Legend

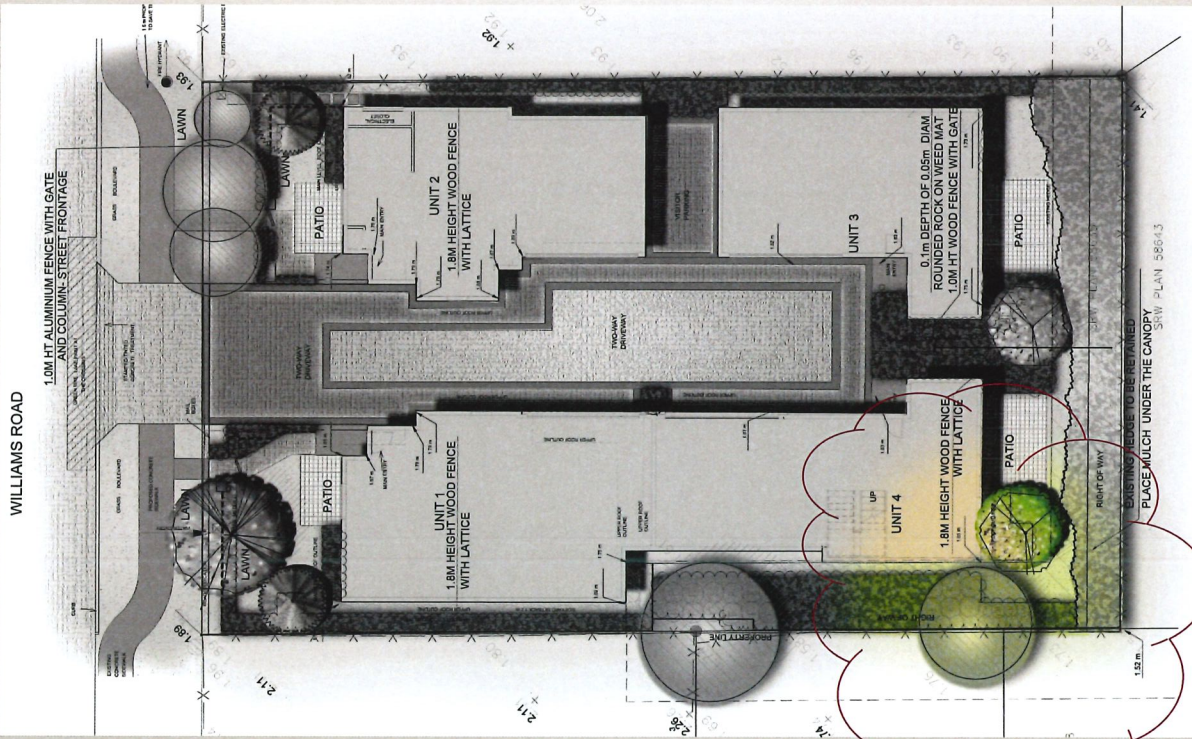


x = remove tree  
(tree barrier)

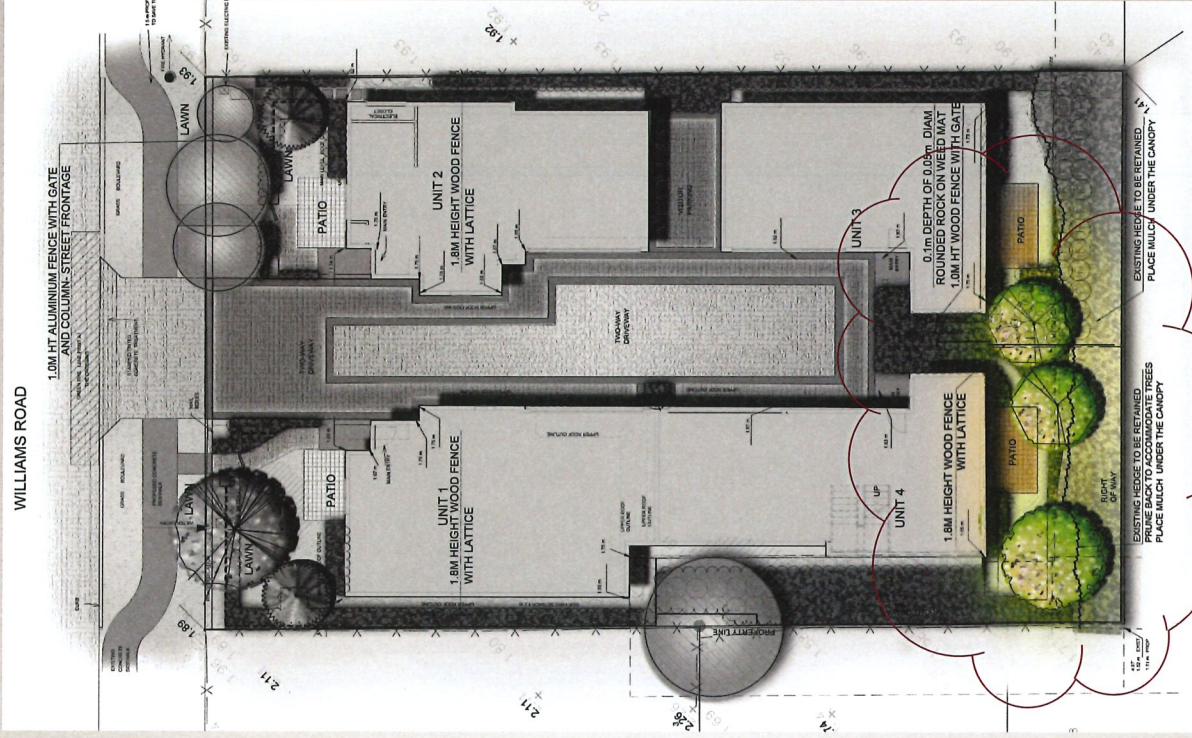
Summary	Tag	Species	DBH (cm)	TPZ (m)
	590	<i>Prunus domestica</i>	16	n/a
	591	<i>Prunus domestica</i>	16	n/a
	592	<i>Prunus domestica</i>	41	2.46
	593	<i>Pseudotsuga menziesii</i>	51	3.06
	c1595	<i>Thuja plicata</i>	44	2.64
	596	<i>Prunus serrulata</i>	34	1.44
	597	<i>Prunus serrulata</i>	32	1.92
	598	<i>Prunus serrulata</i>	37	2.22
	599	<i>Prunus serrulata</i>	21	1.5







**Initially approved plan**

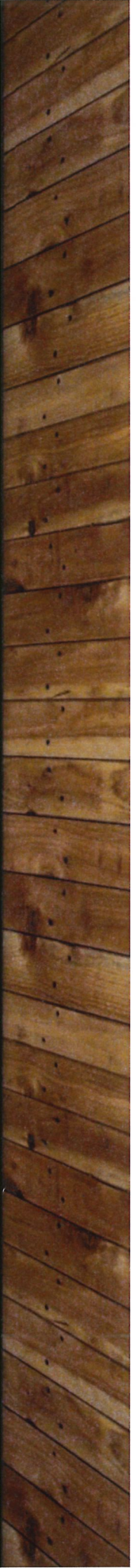


**Proposed plan**





**VividGreen**  
architecture inc.







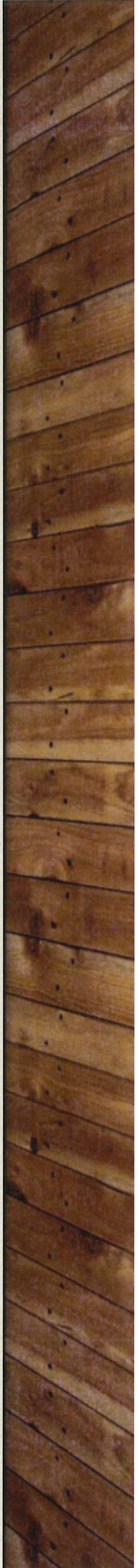
VividGreen  
architecture inc.



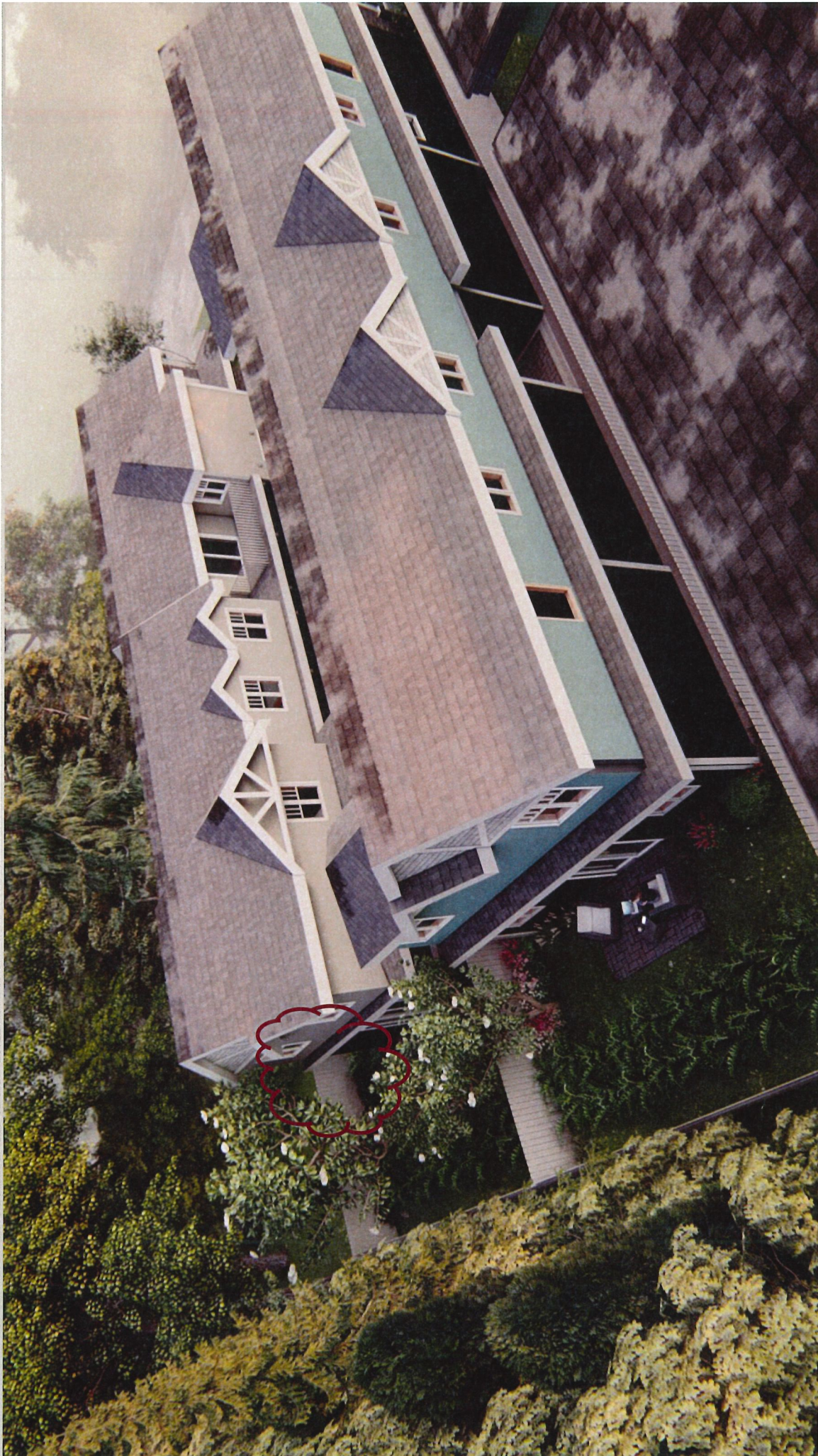




**Vivid Green**  
architecture inc.







**VividGreen**  
architecture inc.

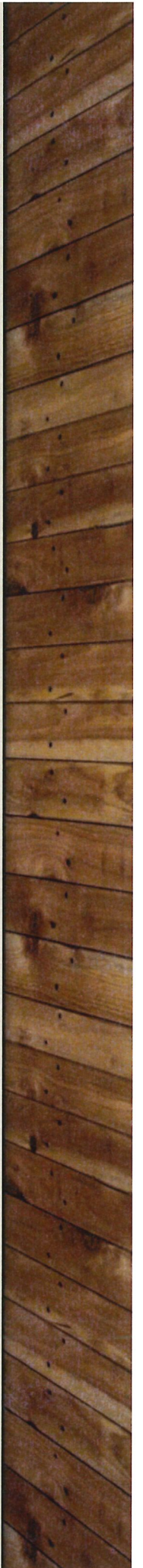






IMAGE 6 - Tree #593 and dead trees #592, 591 and 590

