

# 2011 Richmond Tall Ships Maritime Festival

Presentation to City of Richmond Parks,  
Recreation and Cultural Services  
Committee

Tuesday, April 27, 2010



# 2011 Proposed Event Overview

- 3.5 day Festival, June 2-5, 2011 (Thurs – Sun).
- West Coast three-city bid for the Tall Ships Challenge (Richmond, Victoria and Port Alberni).
- Located in the historic Village of Steveston where streets will be closed to vehicle traffic.
- 3 km riverfront site anchored by Garry Point Park to the west and the historic Britannia Heritage Shipyard facility to the east.
- Encompasses key partner facilities including the Gulf of Georgia Cannery, Vancouver Port Authority, Harbour Port Authority, Steveston Community Association, Steveston Merchant's Association, Tourism Richmond and others.



# 2011 Proposed Event Overview

- 5 key hubs of activity
  - Garry Point
  - 7th Ave Dock
  - 3rd Ave Pier
  - Imperial Landing
  - Britannia Heritage Shipyard



# 2011 Proposed Event Overview

A rich festival environment including:

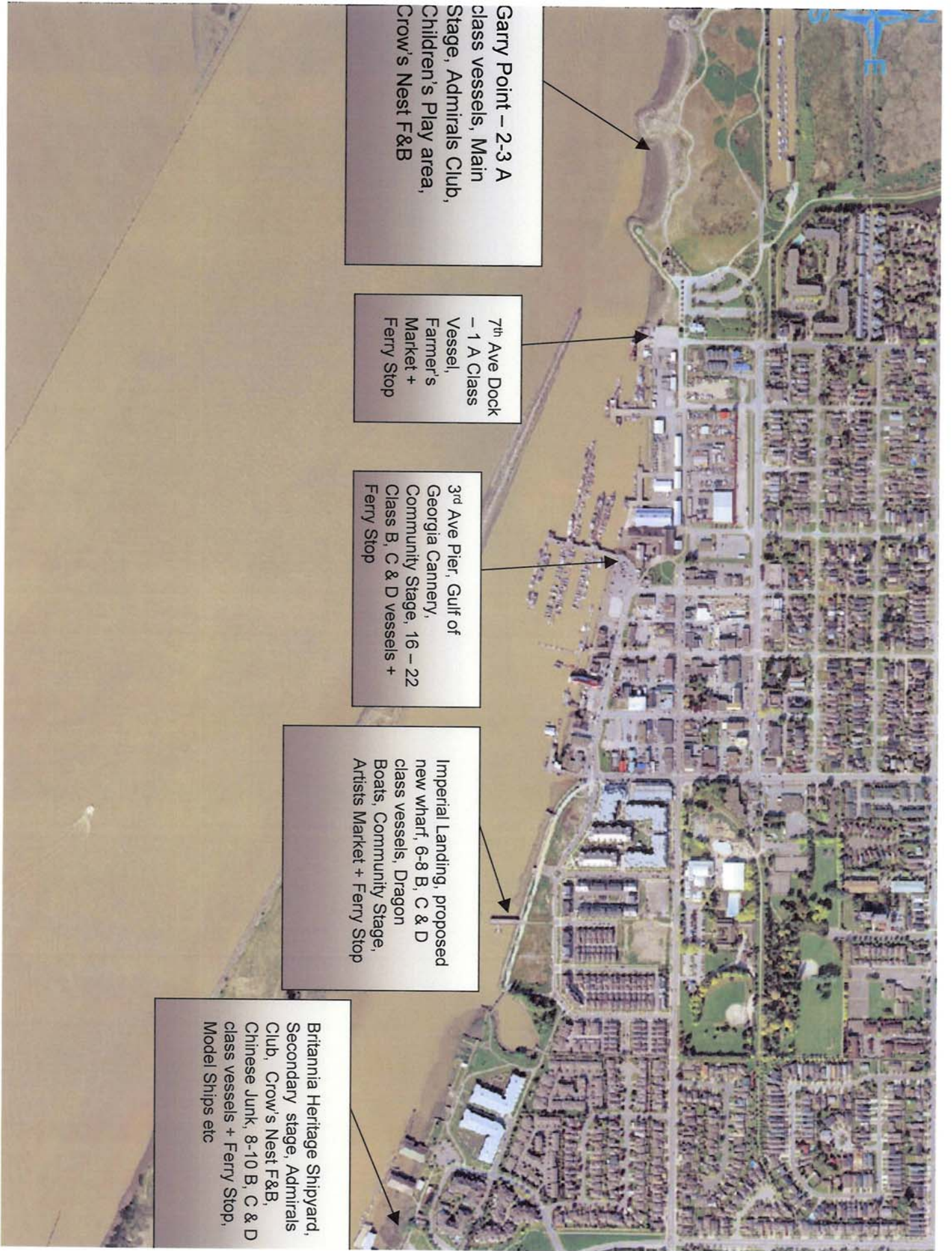
- Sail Past
- Ship boarding and viewing opportunities
- On board receptions
- Waterside tours
- Gun battle displays
- Hop on hop off ferry service
- Asian maritime history celebration
  - Dragon Boats
  - Chinese Junk
  - Japanese Heritage



# 2011 Proposed Event Overview

- Four Stages
  - Main stage located at Garry Point
  - Secondary stage at Britannia
  - Two community stages - Gulf of Georgia Cannery and Imperial Landing.
- Fireworks
- Artisan and Farmers Markets
- Dinghy boat-building workshop and raffle
- First Nations canoe heritage display and workshop
- Youth sail training experiences
- Two fun and interactive Kid's Zones





Garry Point – 2-3 A class vessels, Main Stage, Admirals Club, Children's Play area, Crow's Nest F&B

7<sup>th</sup> Ave Dock – 1 A Class Vessel, Farmer's Market + Ferry Stop

3<sup>rd</sup> Ave Pier, Gulf of Georgia Cannery, Community Stage, 16 – 22 Class B, C & D vessels + Ferry Stop

Imperial Landing, proposed new wharf, 6-8 B, C & D class vessels, Dragon Boats, Community Stage, Artists Market + Ferry Stop

Britannia Heritage Shipyard, Secondary stage, Admirals Club, Crow's Nest F&B, Chinese Junk, 8-10 B, C & D class vessels + Ferry Stop, Model Ships etc



# Garry Point Park

Scale 1 : 2650

2007 Photo



Scotch Pond to be included in program



Crows Nest F&B

Ticket Sales Trailer

Fireworks Barge

- AC - Admirals Club
- S - Stage
- A - Priority Line
- A - Regular Line up
- Proposed Fence
- Direction of ship boarding
- Possible debris boom and ship





7th Ave. Dock

Scale 1 : 1500 2007 Photo



- F** - Ferry
- Priority Line
- Regular Line up
- Fence
- Direction of ship boarding
- Fire Hydrant full time access
- FM** - Farmer's/Business Market



# 3rd Ave Pier

Scale 1 : 2000 2007 Photo



**CS** - Community Stage

**F** - Ferry

**Priority Line**

**Regular Line up**

**Fence**

**Direction of ship boarding**

**temporary floats to aid one way traffic flow**

**TS Trailer - Ticket sales**

Public Fish Docks

TS Trailer

CS

F

B/C

B/C

B/C

B/C

B/C

B/C

B/C

B/C

B/C

B/C

B/C

B/C

B/C

B/C

B/C

B/C

B/C

B/C

B/C

B/C

B/C

B/C

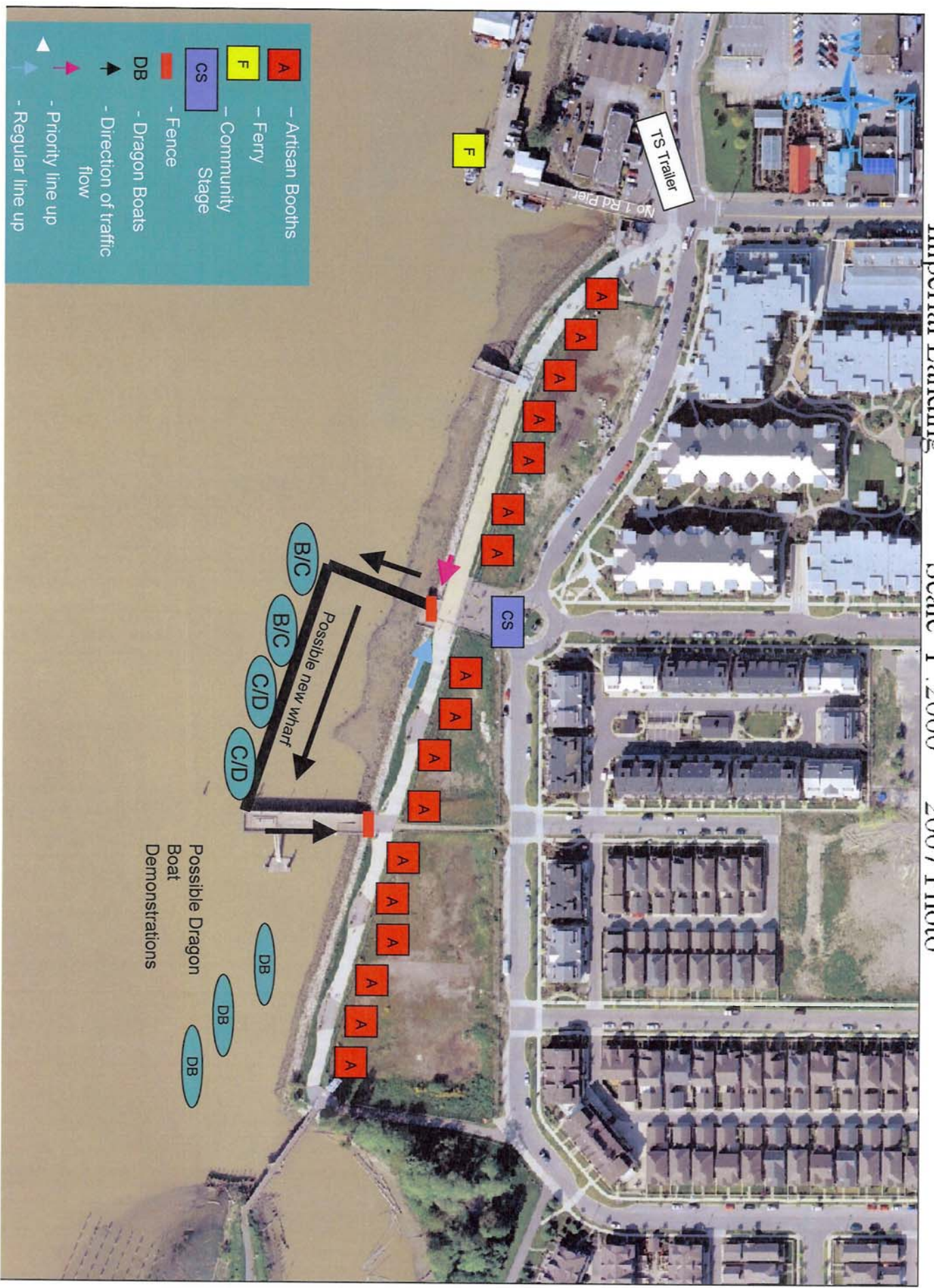




# Imperial Landing

Scale 1 : 2000

2007 Photo



- A** - Artisan Booths
- F** - Ferry
- CS** - Community Stage
- DB** - Dragon Boats

- Fence

- Direction of traffic flow

- Priority line up

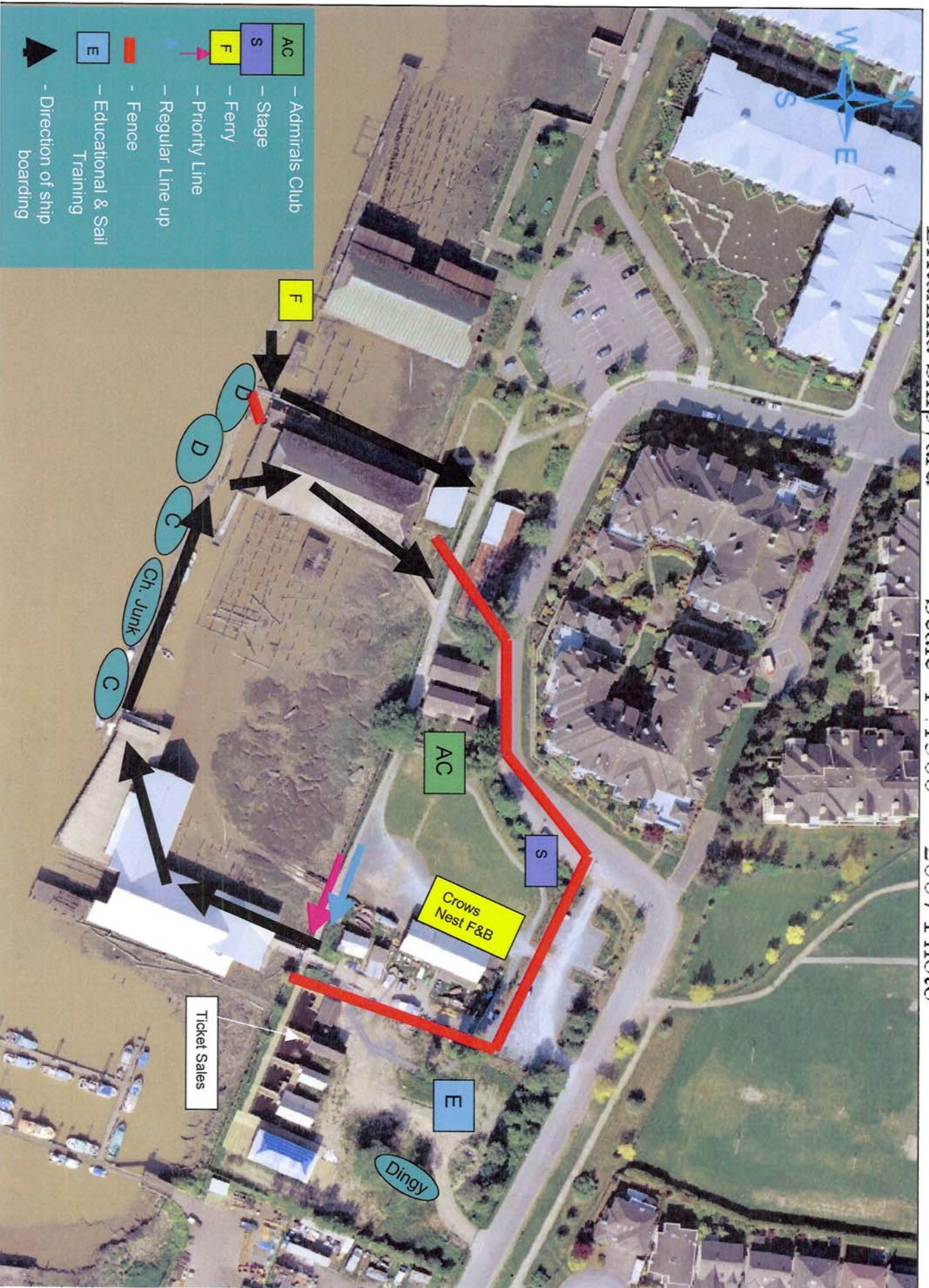
- Regular line up



Britannia Shipyard

Scale 1 : 1500

2007 Photo





# Key Issues

## Risk Analysis

- Tides and Water Flow
- Timelines and Council Approval
- Volunteer Leadership
- Community Perception of Gated Site
- Safety and Security - Gated
- Safety and Security - Not Gated
- Boat Cancellations
- Inclement Weather
- Transportation and Parking
- Boat Access and Line-up Control
- Economy
- Competitive Sponsorship Environment
- Steveston-centric Event

## Risk Level

## Probability

- |        |        |
|--------|--------|
| Low    | Low    |
| High   | Medium |
| High   | Low    |
| Medium | Low    |
| Medium | Low    |
| Medium | Low    |
| High   | High   |
| Medium | High   |
| High   | High   |
| High   | Low    |
| Low    | Low    |
| Medium | Medium |
| High   | Low    |
| Low    | Low    |