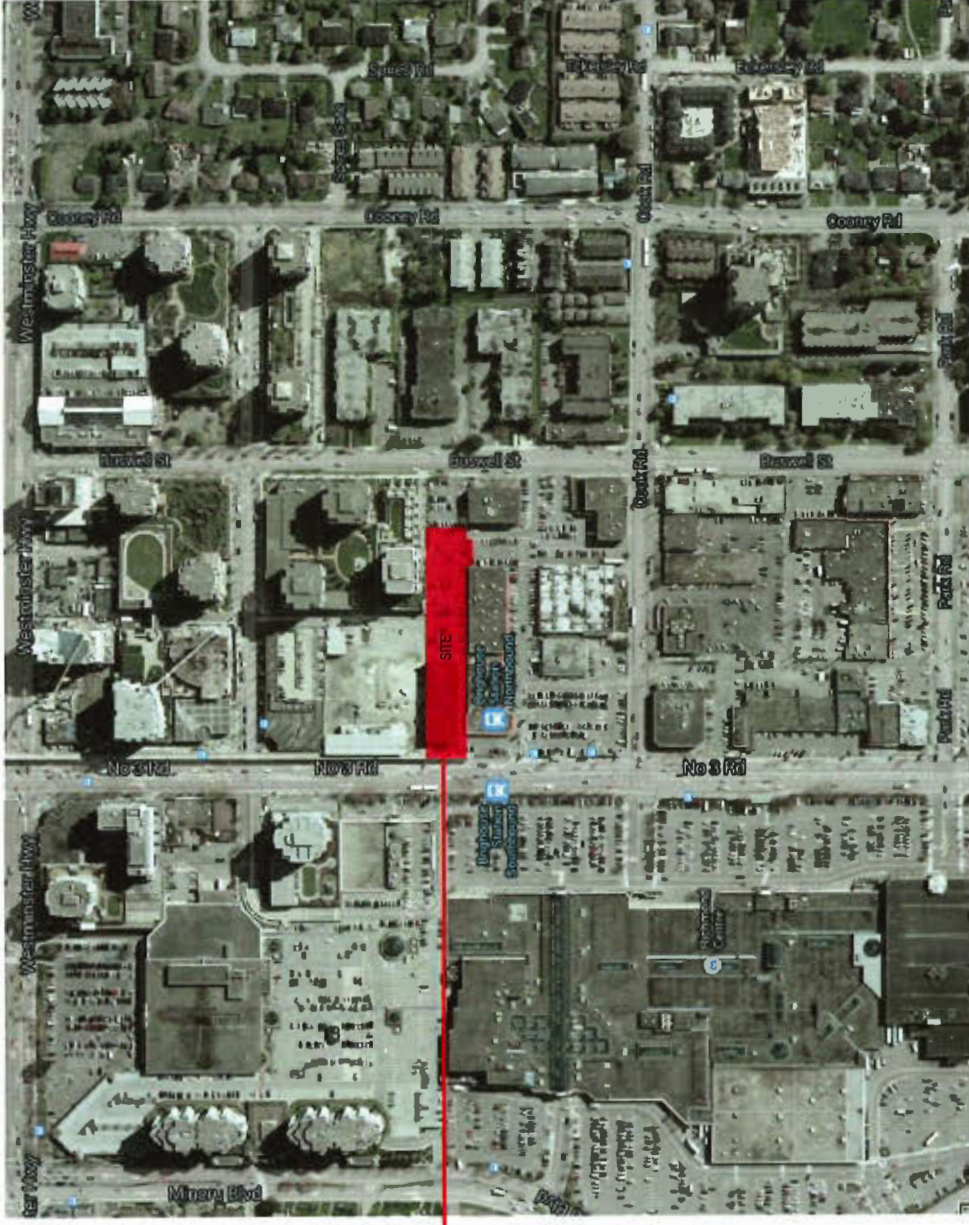


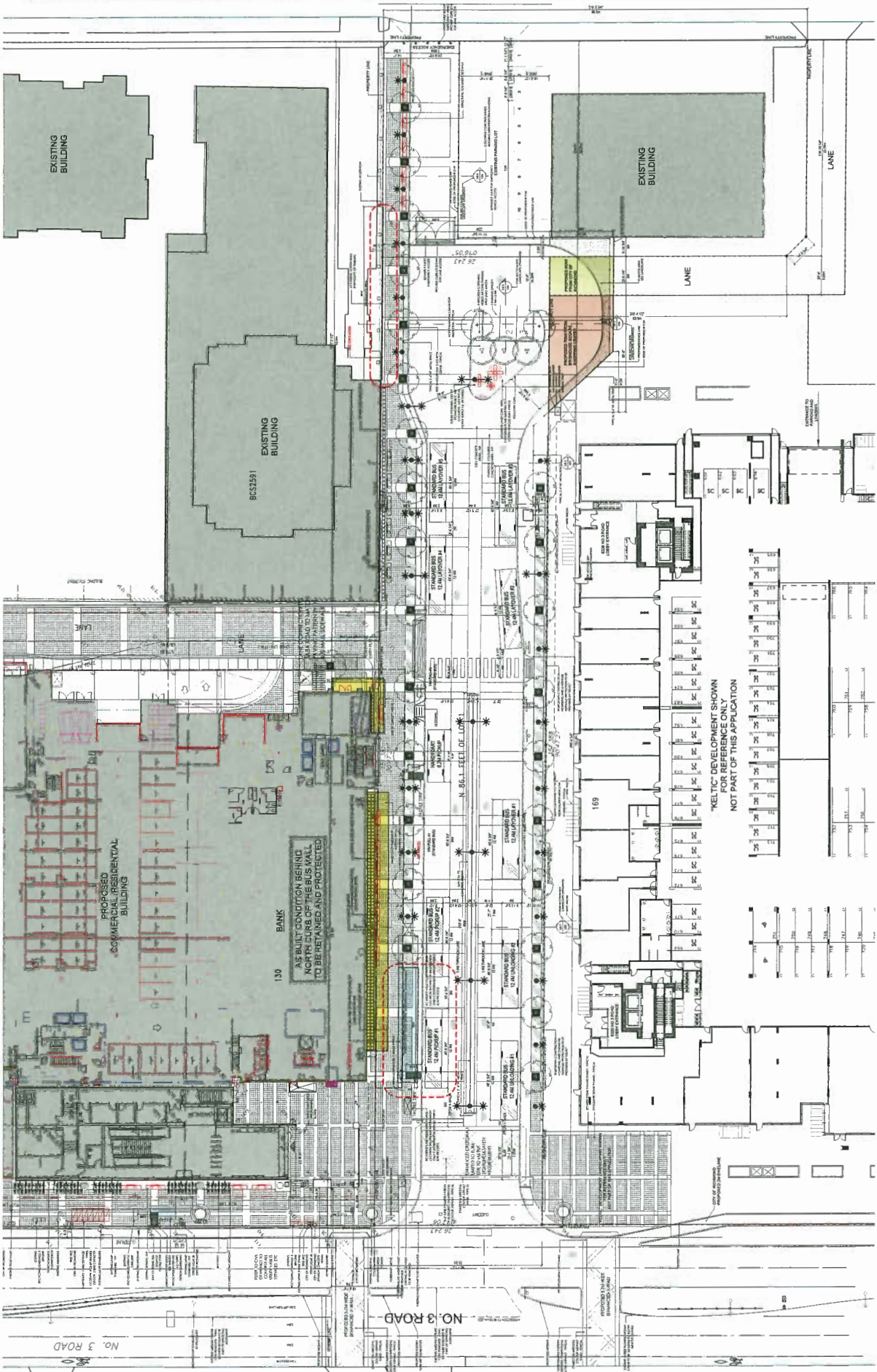
Schedule 1 to the Minutes of the
Development Permit Panel
meeting held on Wednesday,
June 26, 2019.

RICHMOND-BRIGHOUSE BUS MALL

6302 No 3 Road, Richmond
DEVELOPMENT PANEL MEETING

JUNE 26, 2019





TRANS LINK

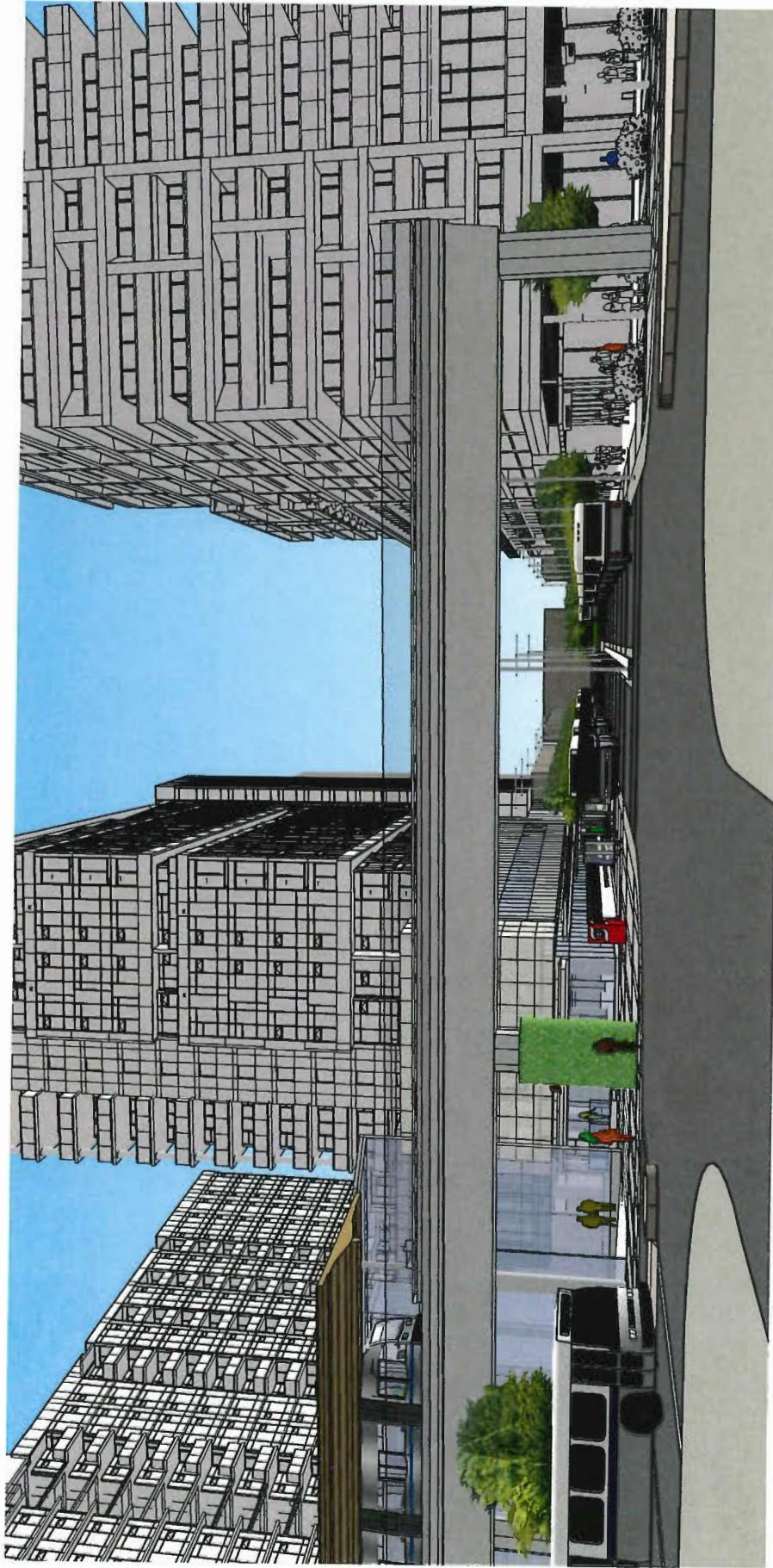


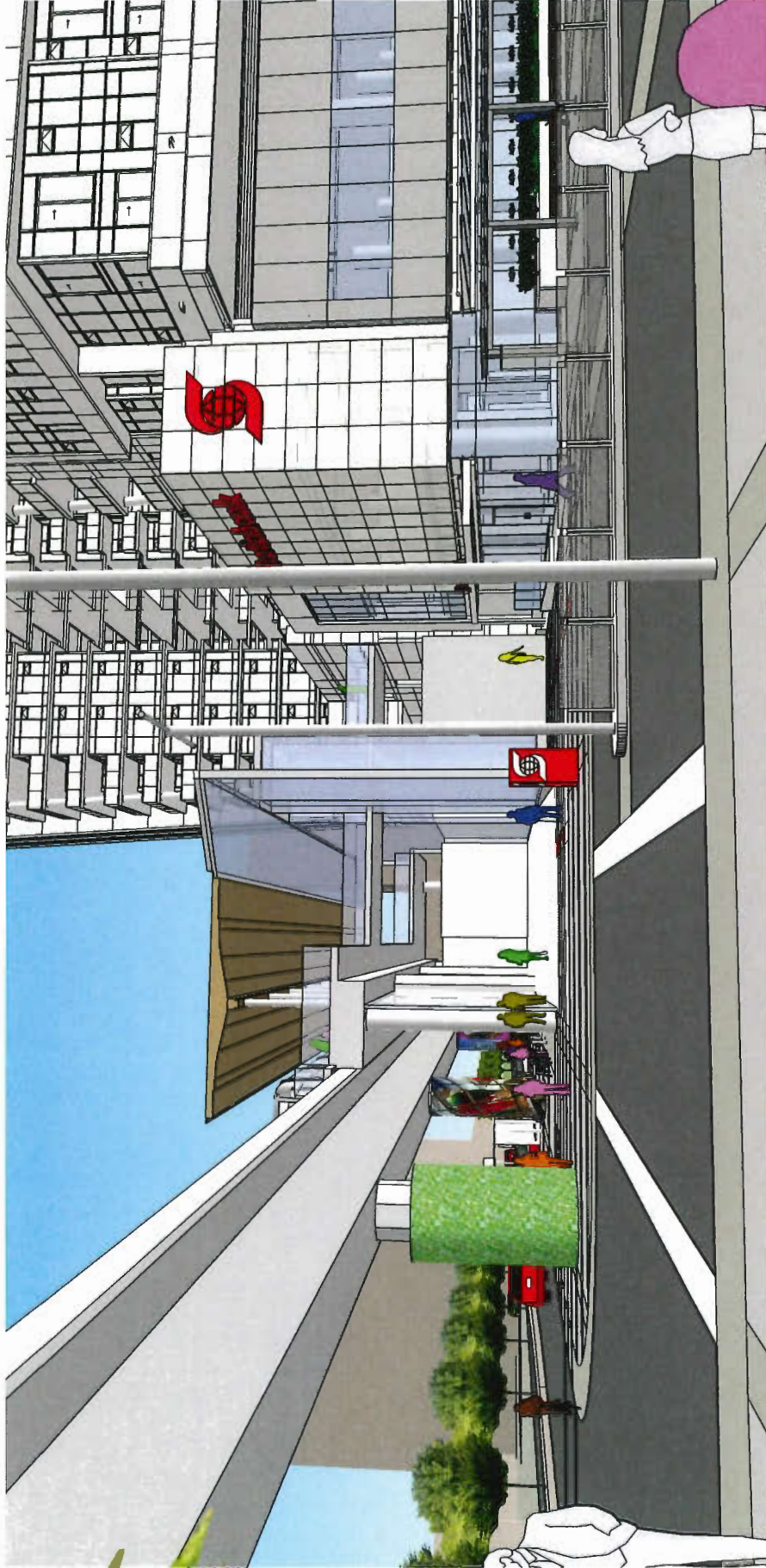
IBI GROUP ARCHITECTS
100-1100 West 104th Street
Richmond, BC V6X 3A9
Tel: 604-273-8888
www.ibigroup.com

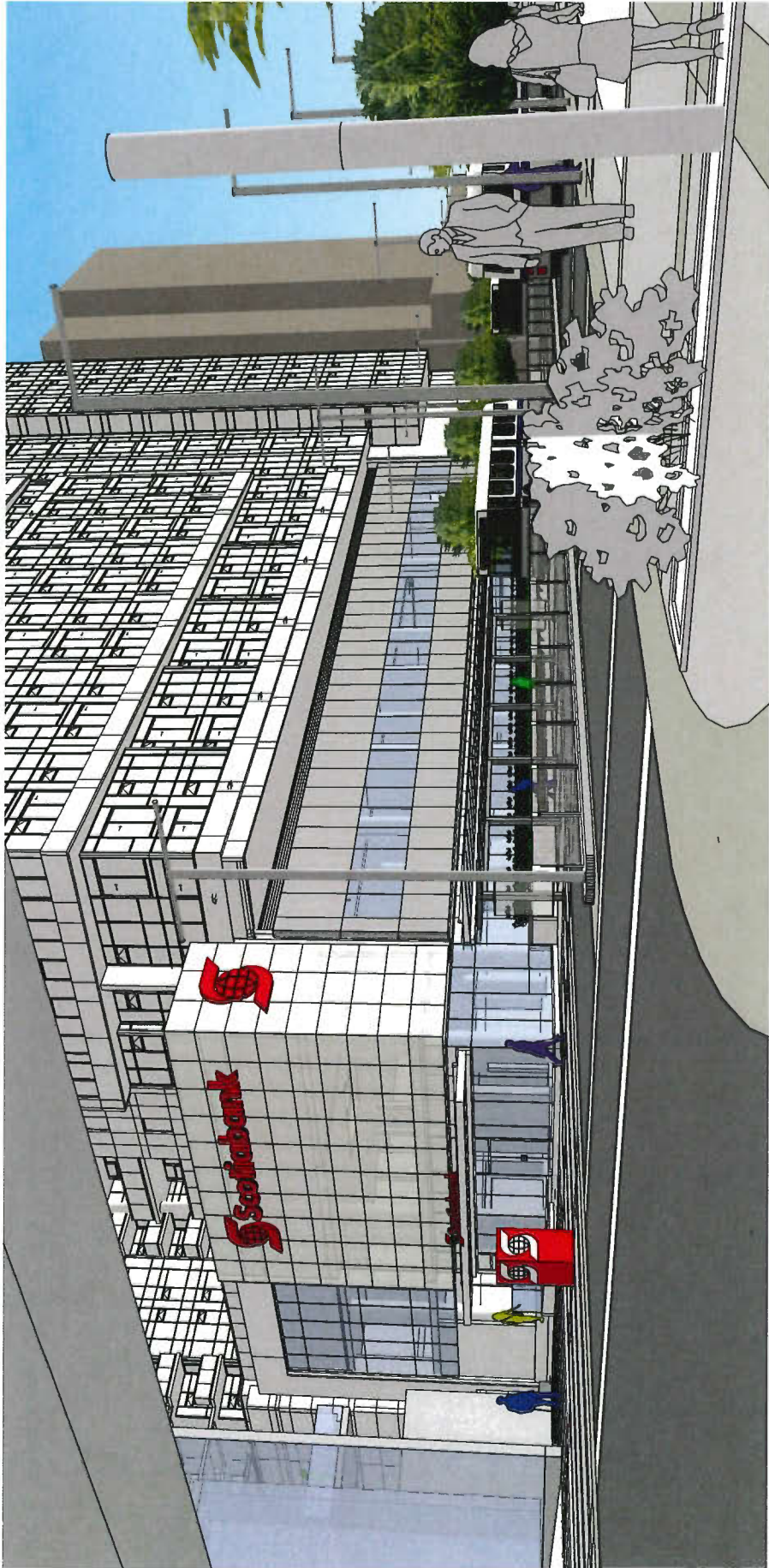






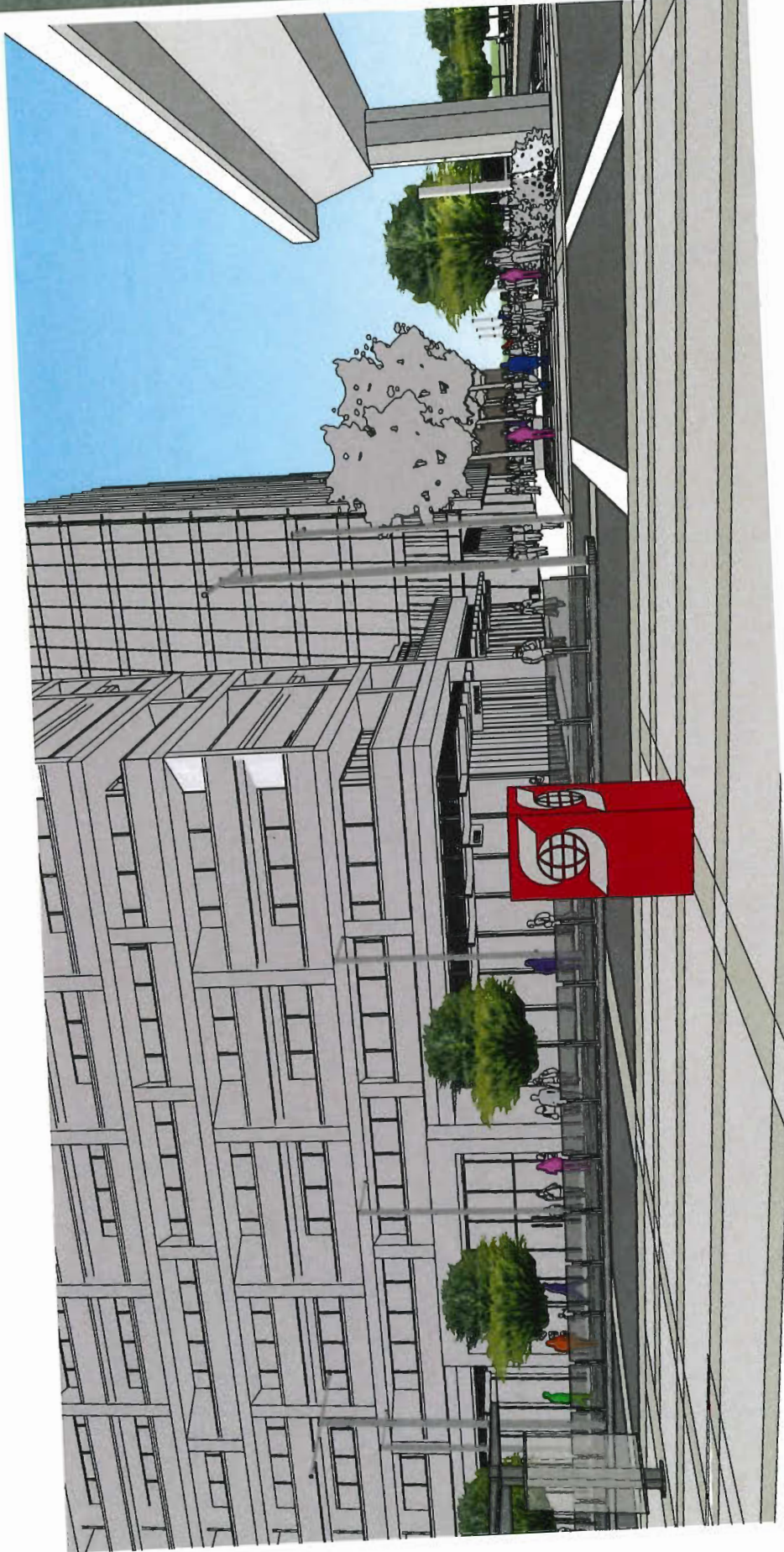






BUS MALL

TRANSLINK



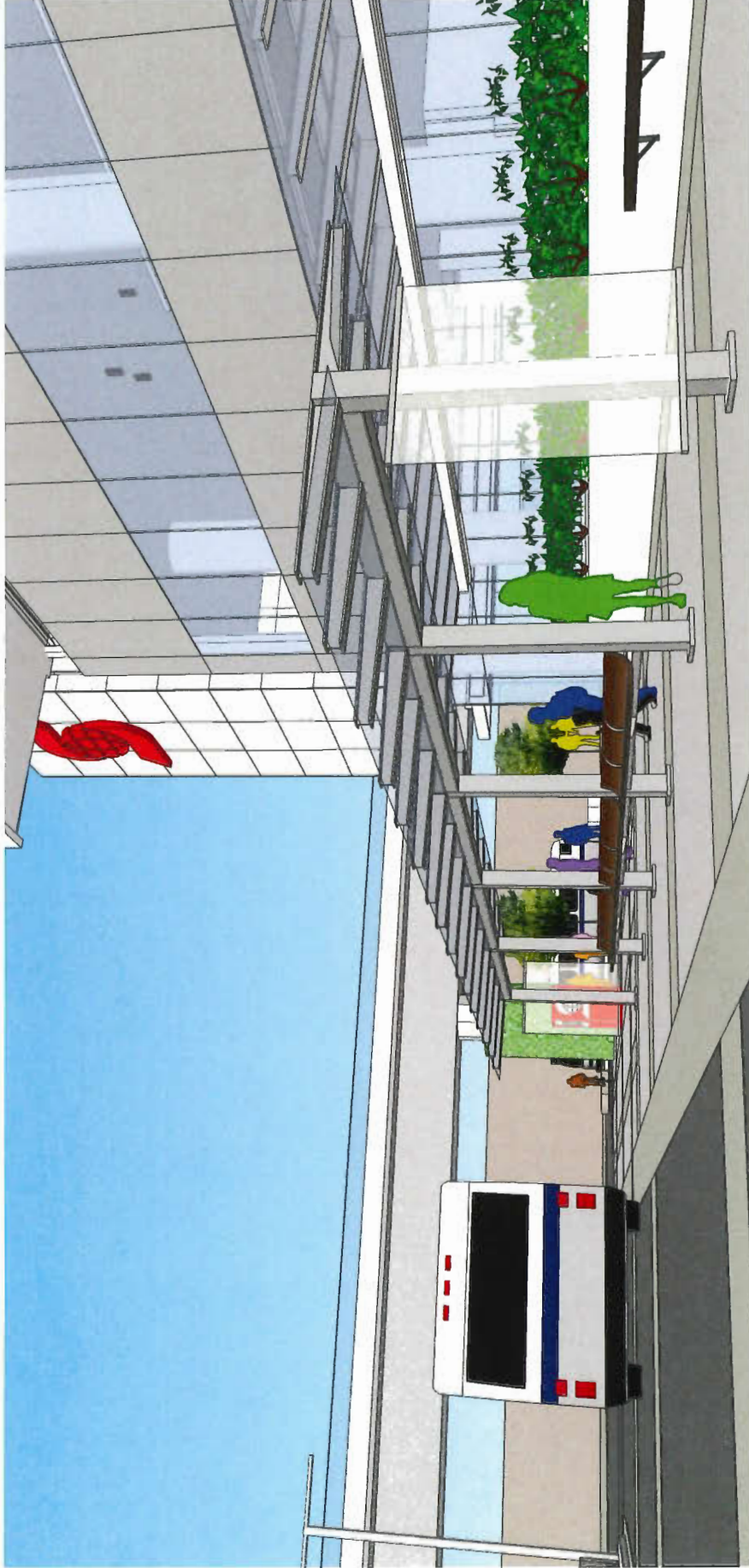
A0027

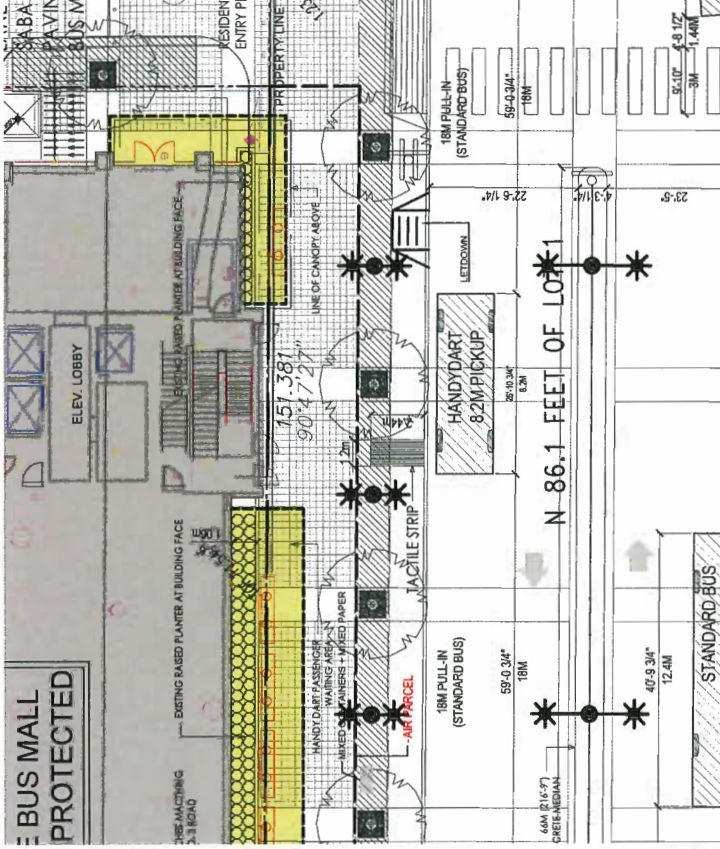
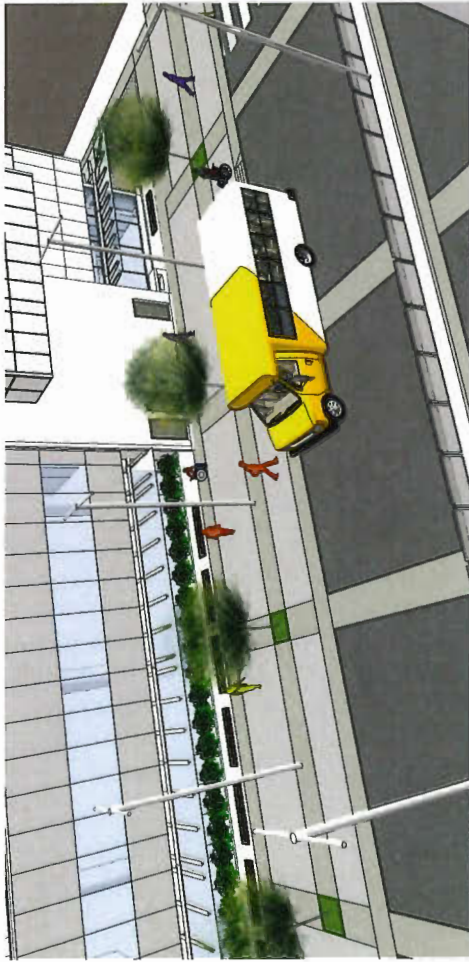
6302 No 3 Road, Richmond
Development Permit Re-Submission
June 03, 2019

BUS MALL

IBI
IBI GROUP ARCHITECTS
100-10100 104th Avenue
Richmond, BC V6V 1G9
Tel: 604.273.4300
www.ibigroup.com

TRANSLINK

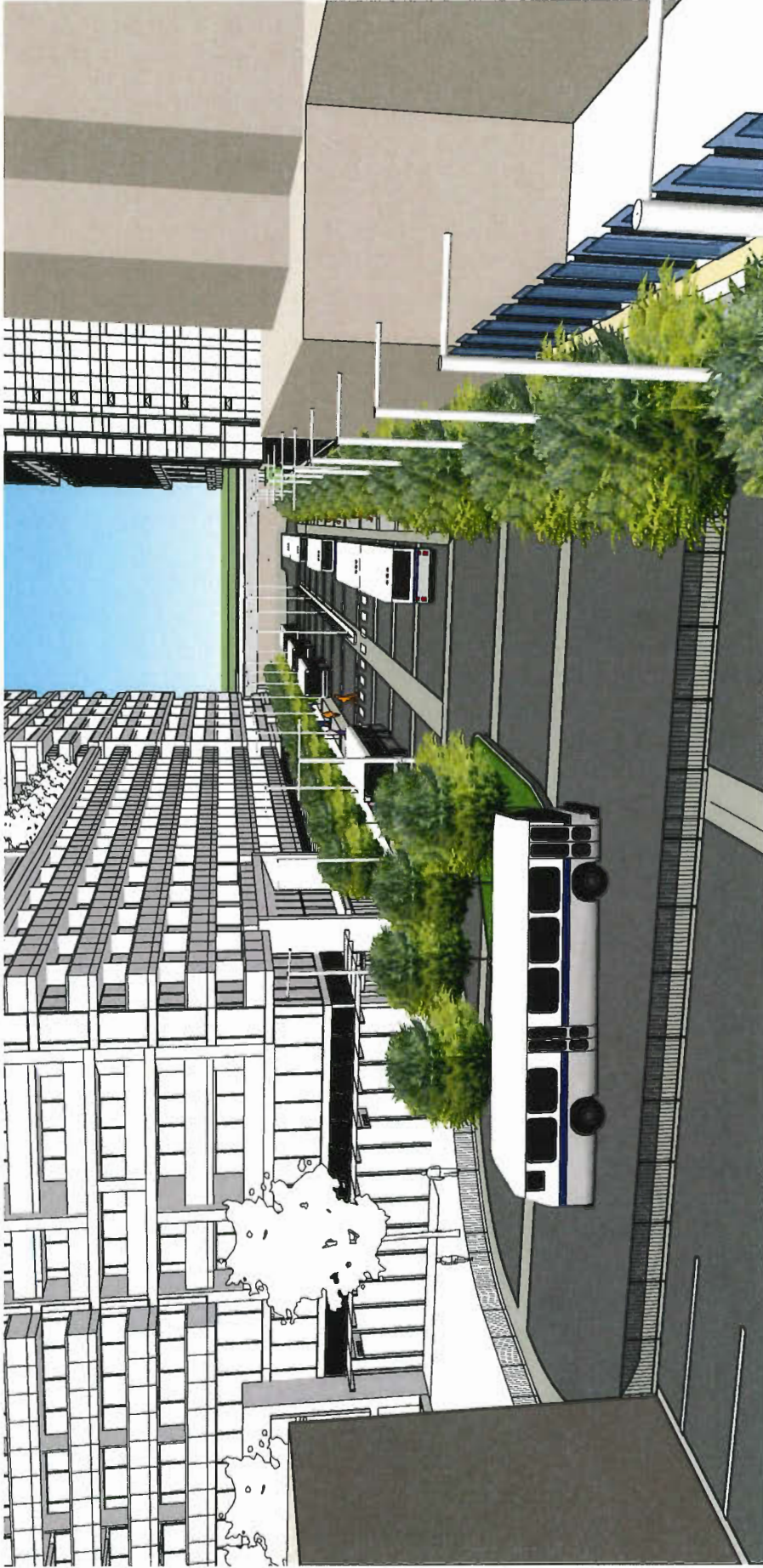




HANDYDART BUS LOCATION AND PASSENGER AREA







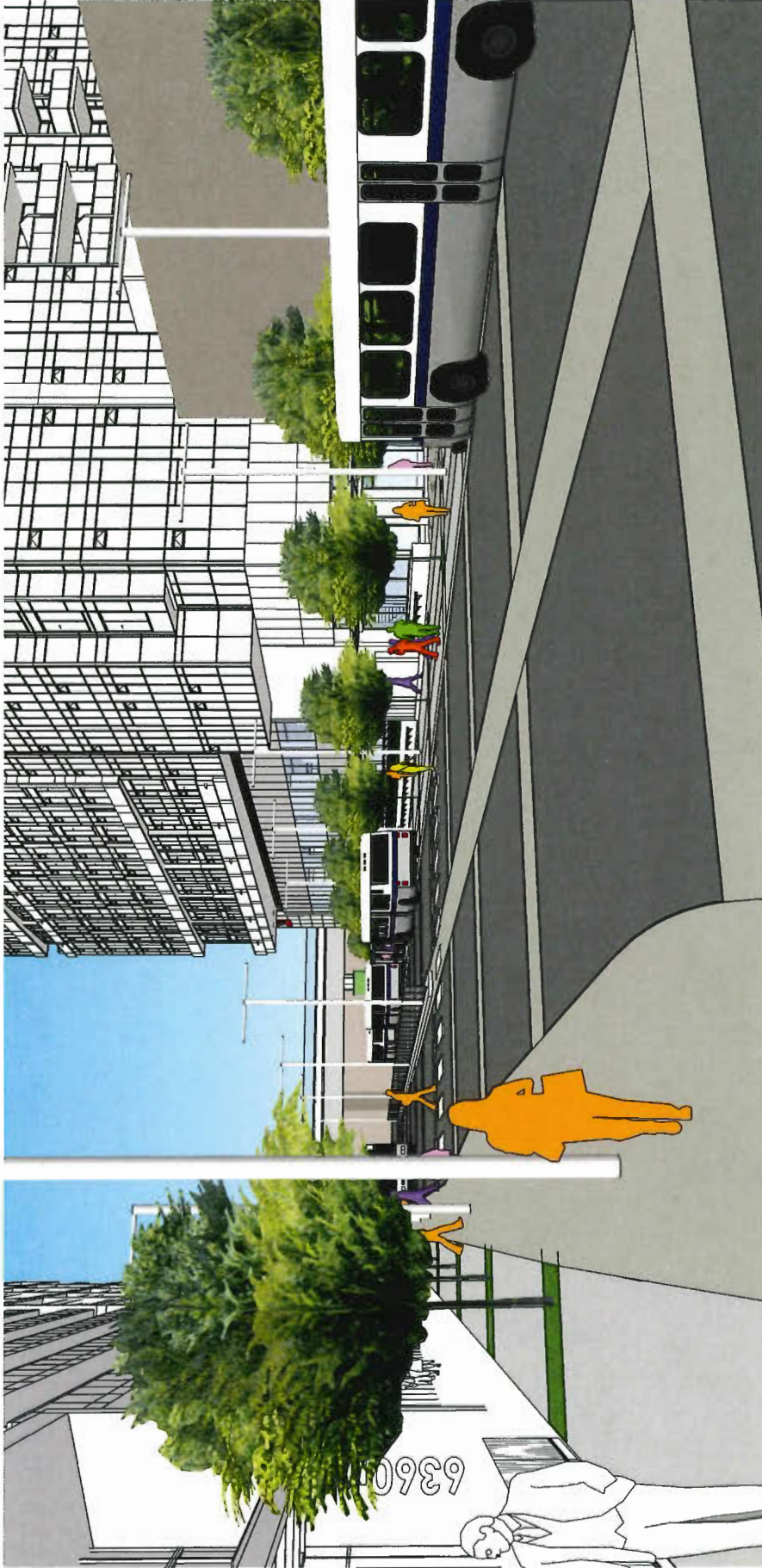
IBI GROUP ARCHITECTURE
7500 - 1425 Street Avenue SW
V6P 4K6
Vancouver, BC V6P 4K6

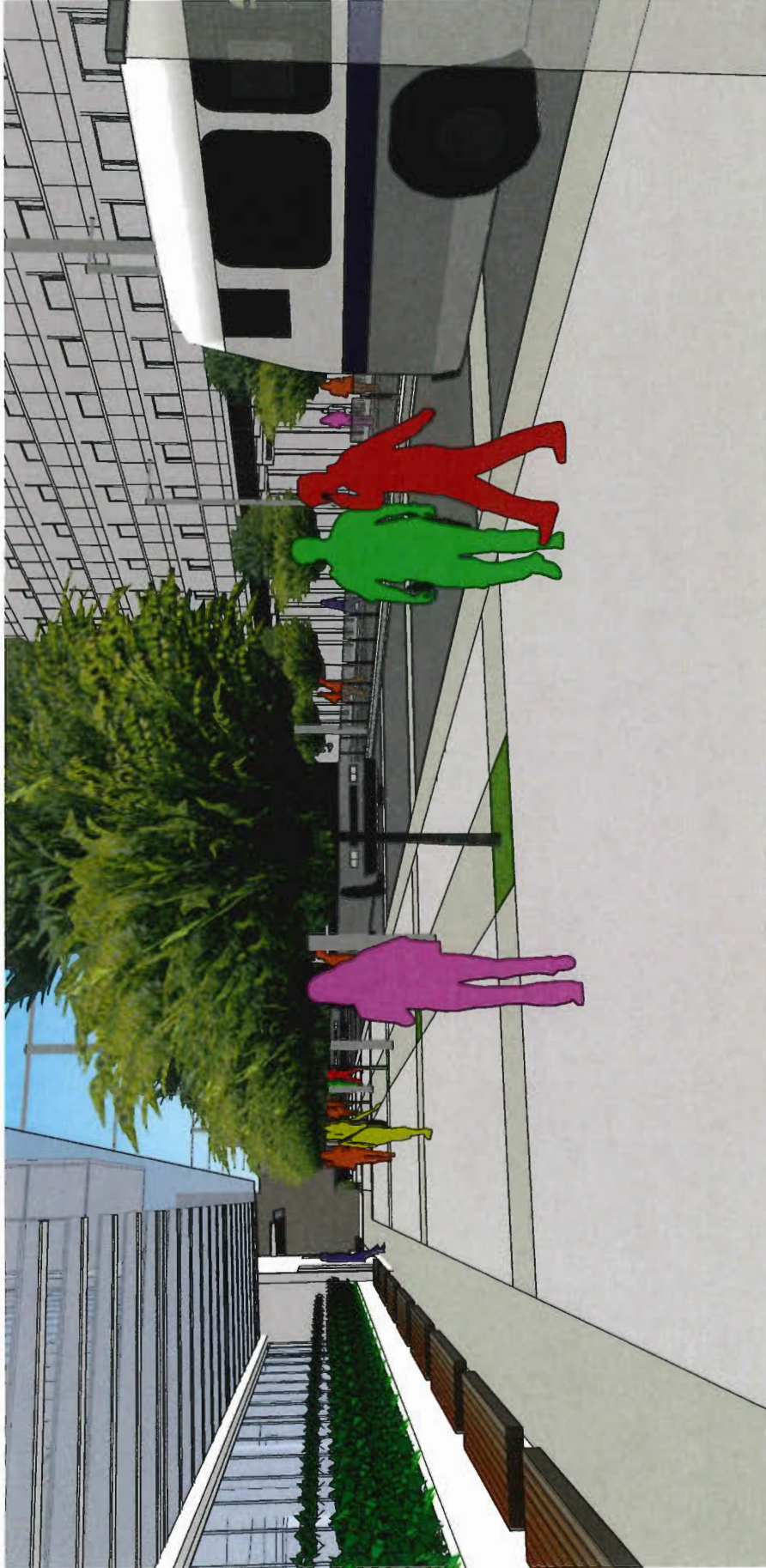
TRANSLINK

BUS MALL

6302 No 3 Road, Richmond
Development Permit Re-Submission
June 03, 2019







6302 NO 3 ROAD, RICHMOND
DEVELOPMENT PERMIT RE-SUBMISSION
June 03, 2019

BUS MALL

TRANSLINK

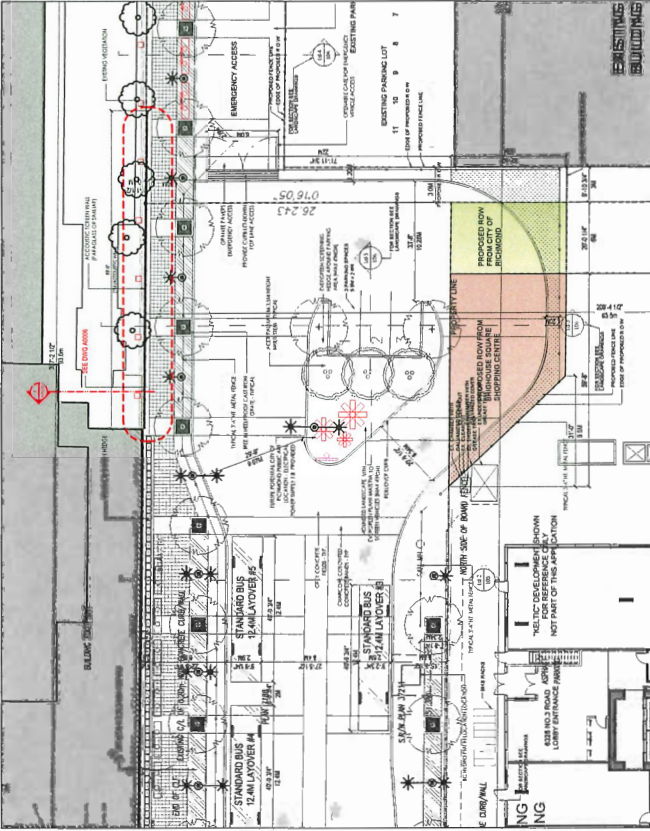
IBJ
 AN ARCHITECTURAL FIRM
 1000 WEST 10TH AVENUE
 SUITE 1000
 VANCOUVER, BC V6H 3K6
 TEL: 604.681.1234
 WWW.IBJA.COM



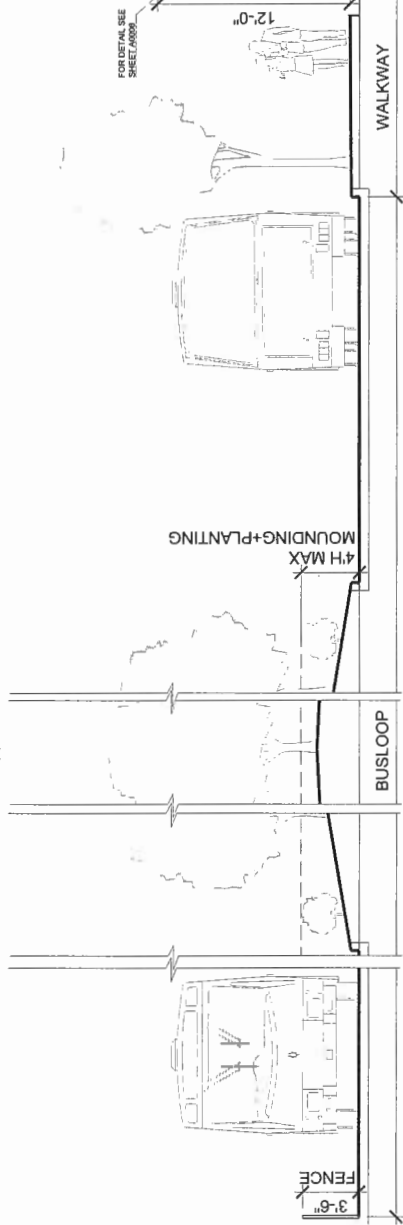
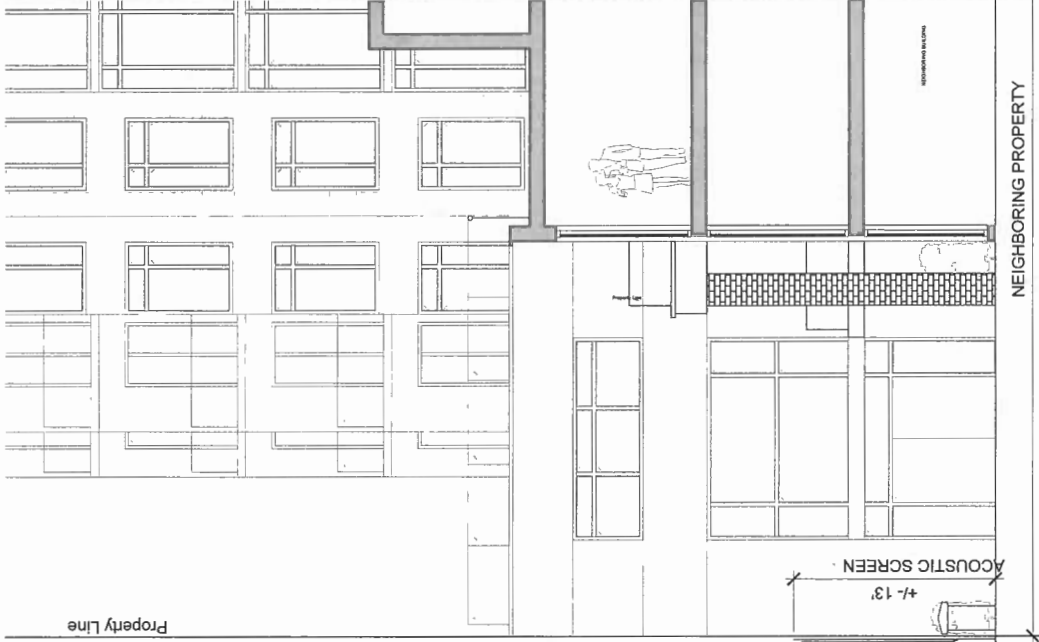
Image 1: North Neighbour
FACING EAST ELEVATION



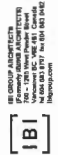
Image 2: North Neighbour
FACING SOUTH-EAST ELEVATION



Key Plan
Scale: 1/16" = 1'-0"



Acoustic Screen
Scale: 1/4" = 1'-0"



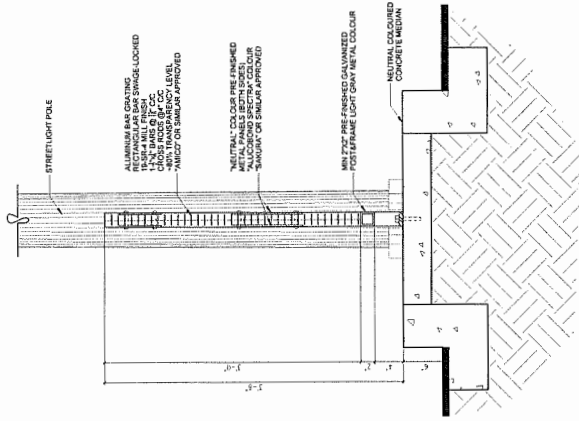
ACOUSTIC SCREEN

SCALE:

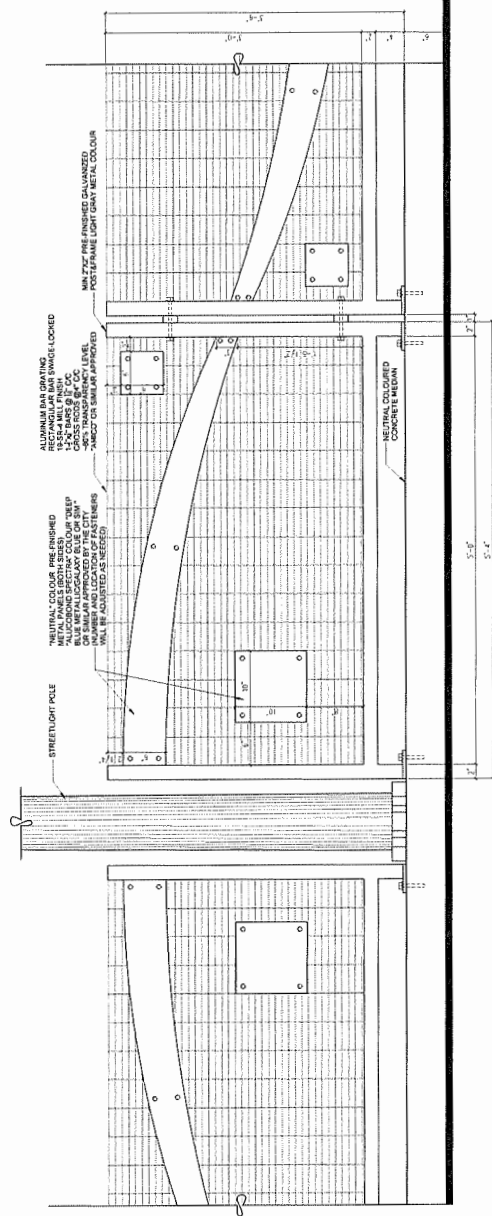
1/12"=1'-0"

6302 No. 3 ROAD, RICHMOND
DEVELOPMENT PERMIT RE-SUBMISSION
June 03, 2019

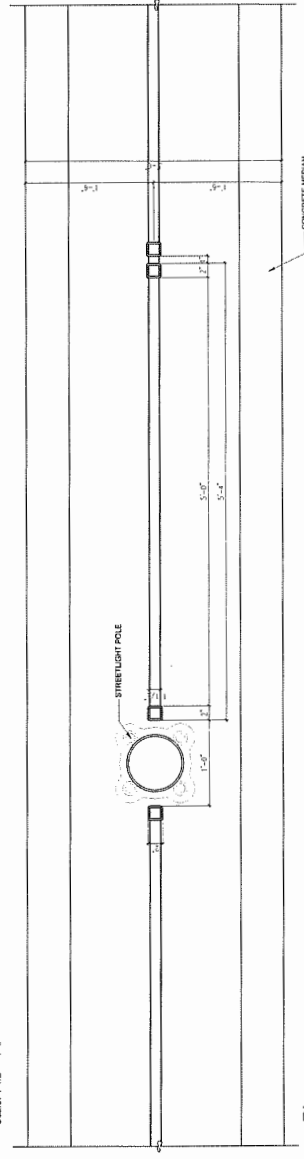
A0005



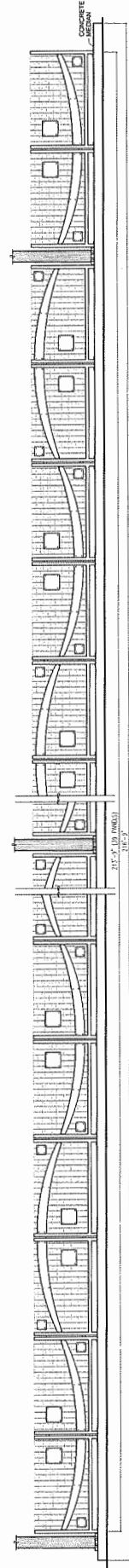
Section
Scale: 1 1/2" = 1'-0"



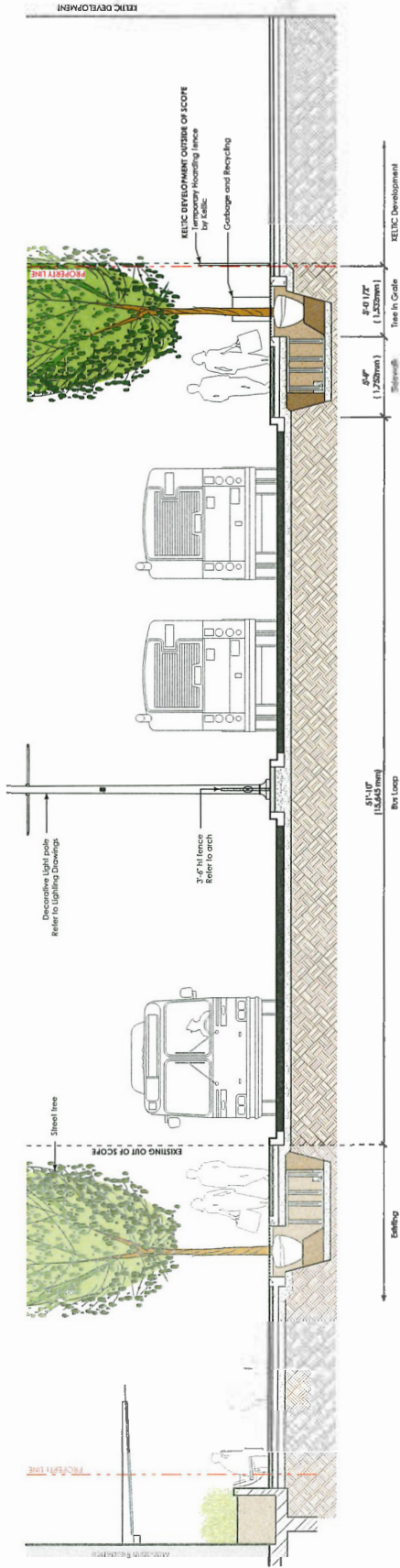
Elevation
Scale: 1 1/2" = 1'-0"



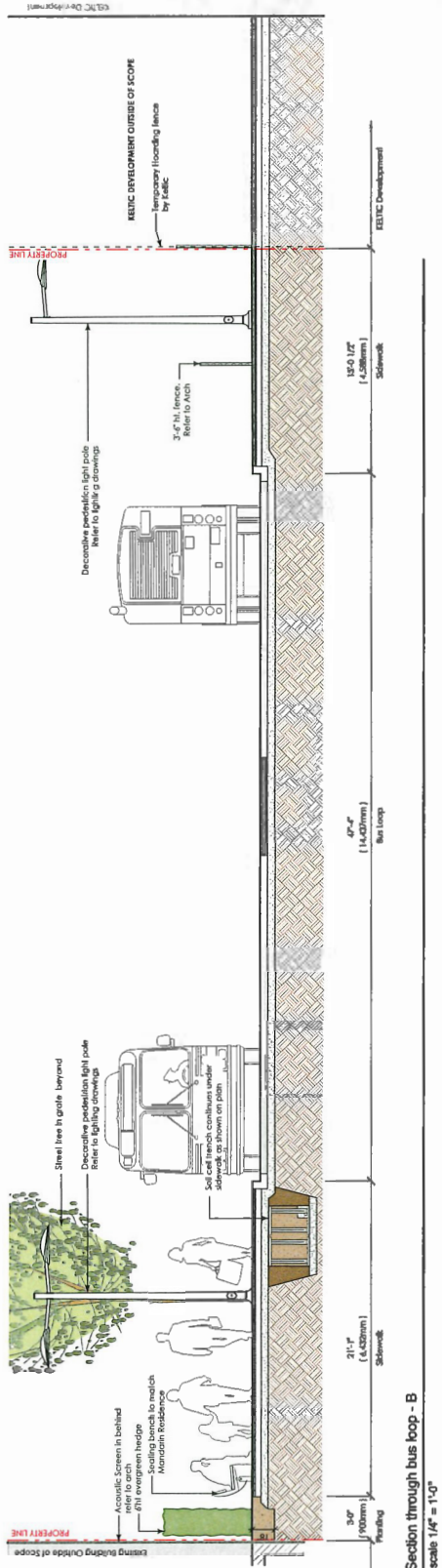
Plan
Scale: 1 1/2" = 1'-0"



Elevation
Scale: NTS



L4-1 Section through bus loop - A
scale 1/4" = 1'-0"



L4-2 Section through bus loop - B
scale 1/4" = 1'-0"

A & M Project No. 13-021

BRIGHOUSE STATION
BUS MALL
LANDSCAPE SECTIONS

SCALE AS SHOWN

SEAL

durante frenk
1000 15th St NW
Seattle, WA 98101
P: 206.461.4011
www.durante.com

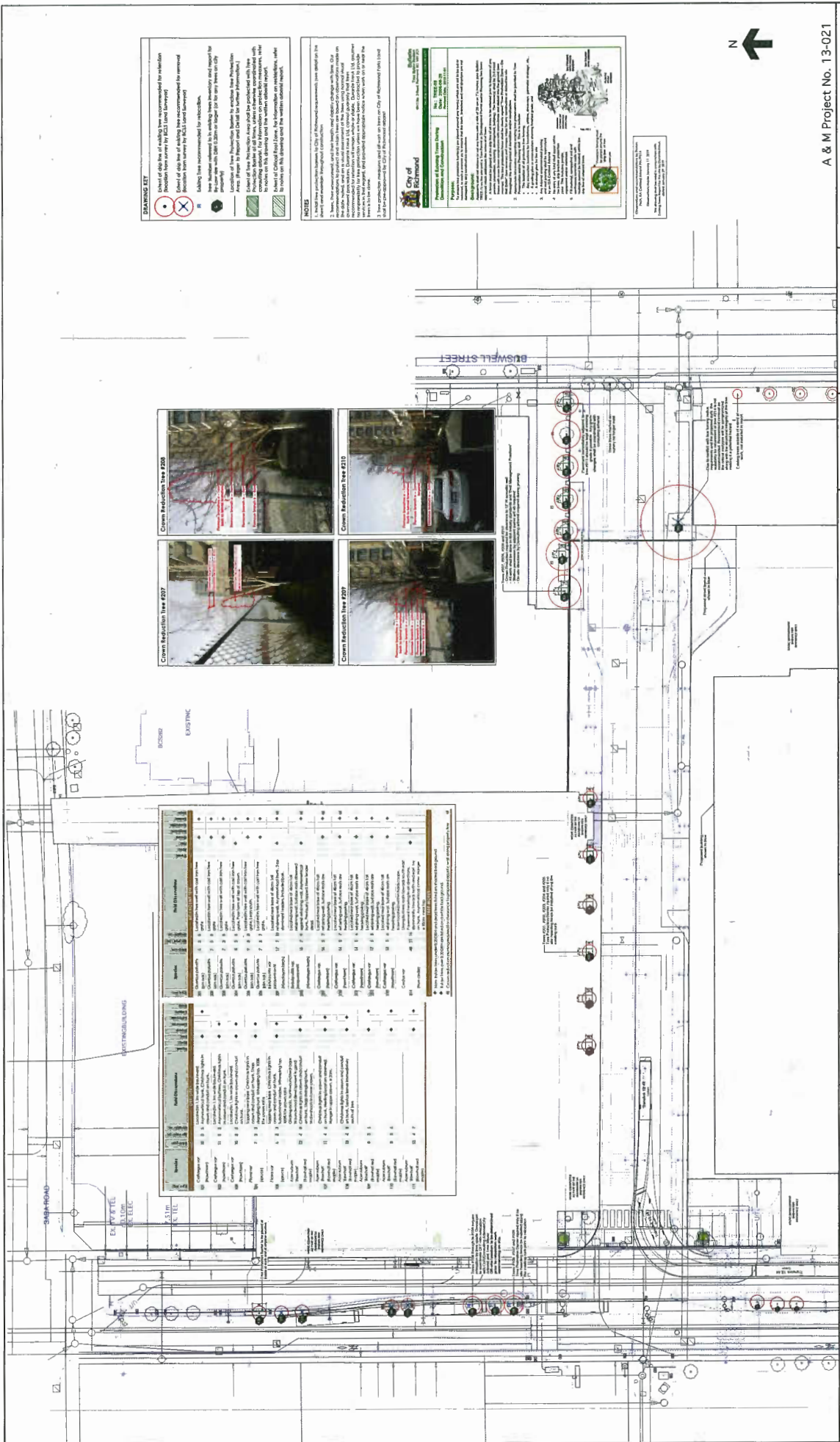


DATE	DESCRIPTION	BY	REVISIONS
MAY 07, 2014	RE-SHAPE FOR DP	AM	RE-SHAPE FOR DP
JAN 07, 2014	RE-SHAPE FOR DP	AM	RE-SHAPE FOR DP
MAY 07, 2014	RE-SHAPE FOR DP	AM	RE-SHAPE FOR DP

DATE	DESCRIPTION	BY	REVISIONS
MAY 07, 2014	RE-SHAPE FOR DP	AM	RE-SHAPE FOR DP
JAN 07, 2014	RE-SHAPE FOR DP	AM	RE-SHAPE FOR DP
MAY 07, 2014	RE-SHAPE FOR DP	AM	RE-SHAPE FOR DP

DATE: MAY 07, 2014
PROJECT: BRIGHOUSE STATION
DRAWN BY: AM
CHECKED BY: AM
DATE: MAY 07, 2014
PROJECT: BRIGHOUSE STATION
DRAWN BY: AM
CHECKED BY: AM

SURPRISES PRINTS OF THIS NUMBER WITH LETTERS PRECEDES TO



DRAWING SET

- 1. Detail of tree preservation plan for relation to other drawings by 10/21/2014 (Completed)
- 2. Detail of tree preservation plan for relation to other drawings by 10/21/2014 (Completed)
- 3. Detail of tree preservation plan for relation to other drawings by 10/21/2014 (Completed)
- 4. Detail of tree preservation plan for relation to other drawings by 10/21/2014 (Completed)
- 5. Detail of tree preservation plan for relation to other drawings by 10/21/2014 (Completed)
- 6. Detail of tree preservation plan for relation to other drawings by 10/21/2014 (Completed)
- 7. Detail of tree preservation plan for relation to other drawings by 10/21/2014 (Completed)
- 8. Detail of tree preservation plan for relation to other drawings by 10/21/2014 (Completed)
- 9. Detail of tree preservation plan for relation to other drawings by 10/21/2014 (Completed)
- 10. Detail of tree preservation plan for relation to other drawings by 10/21/2014 (Completed)

NOTES

1. All trees shown on this drawing are to be preserved unless otherwise noted.
2. Trees to be removed are shown with a red 'X' over the tree symbol.
3. Trees to be preserved are shown with a green circle around the tree symbol.
4. Trees to be preserved with crown reduction are shown with a red circle around the tree symbol and a red line indicating the crown reduction line.
5. Trees to be preserved with crown reduction are shown with a red circle around the tree symbol and a red line indicating the crown reduction line.
6. Trees to be preserved with crown reduction are shown with a red circle around the tree symbol and a red line indicating the crown reduction line.
7. Trees to be preserved with crown reduction are shown with a red circle around the tree symbol and a red line indicating the crown reduction line.
8. Trees to be preserved with crown reduction are shown with a red circle around the tree symbol and a red line indicating the crown reduction line.
9. Trees to be preserved with crown reduction are shown with a red circle around the tree symbol and a red line indicating the crown reduction line.
10. Trees to be preserved with crown reduction are shown with a red circle around the tree symbol and a red line indicating the crown reduction line.

City of Richmond

Department of Public Works
Division of Parks and Recreation
1000 North Main Street
Richmond, VA 23219

Tree Management Plan

1. The purpose of this plan is to provide a clear and concise description of the tree management plan for the project. This plan is intended to be used as a guide for the implementation of the tree management plan.

2. The tree management plan is based on the following principles:

1. Preservation of existing trees.
2. Removal of trees that are dead, dying, or otherwise hazardous.
3. Preservation of trees that are of significant value.
4. Preservation of trees that are of significant value.
5. Preservation of trees that are of significant value.
6. Preservation of trees that are of significant value.
7. Preservation of trees that are of significant value.
8. Preservation of trees that are of significant value.
9. Preservation of trees that are of significant value.
10. Preservation of trees that are of significant value.

3. The tree management plan is based on the following principles:

1. Preservation of existing trees.
2. Removal of trees that are dead, dying, or otherwise hazardous.
3. Preservation of trees that are of significant value.
4. Preservation of trees that are of significant value.
5. Preservation of trees that are of significant value.
6. Preservation of trees that are of significant value.
7. Preservation of trees that are of significant value.
8. Preservation of trees that are of significant value.
9. Preservation of trees that are of significant value.
10. Preservation of trees that are of significant value.

Tree Management Plan

1. The purpose of this plan is to provide a clear and concise description of the tree management plan for the project. This plan is intended to be used as a guide for the implementation of the tree management plan.

2. The tree management plan is based on the following principles:

1. Preservation of existing trees.
2. Removal of trees that are dead, dying, or otherwise hazardous.
3. Preservation of trees that are of significant value.
4. Preservation of trees that are of significant value.
5. Preservation of trees that are of significant value.
6. Preservation of trees that are of significant value.
7. Preservation of trees that are of significant value.
8. Preservation of trees that are of significant value.
9. Preservation of trees that are of significant value.
10. Preservation of trees that are of significant value.



A & M Project No. 13-021

BRIGHOUSE STATION
BUS MALL

EXISTING TREES MANAGEMENT PLAN

SCALE: 1" = 10'

DATE: 10/21/2014

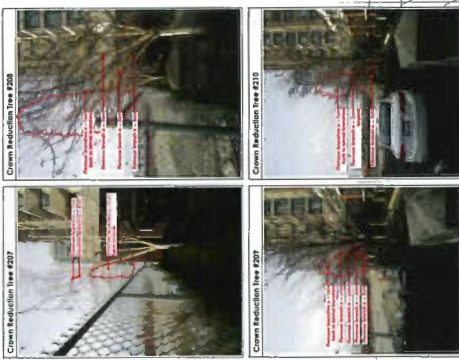
PROJECT: BRIGHOUSE STATION

DATE: 10/21/2014

PROJECT: BRIGHOUSE STATION

DATE: 10/21/2014

PROJECT: BRIGHOUSE STATION



BAR SCALE: 1" = 10'

SEAL

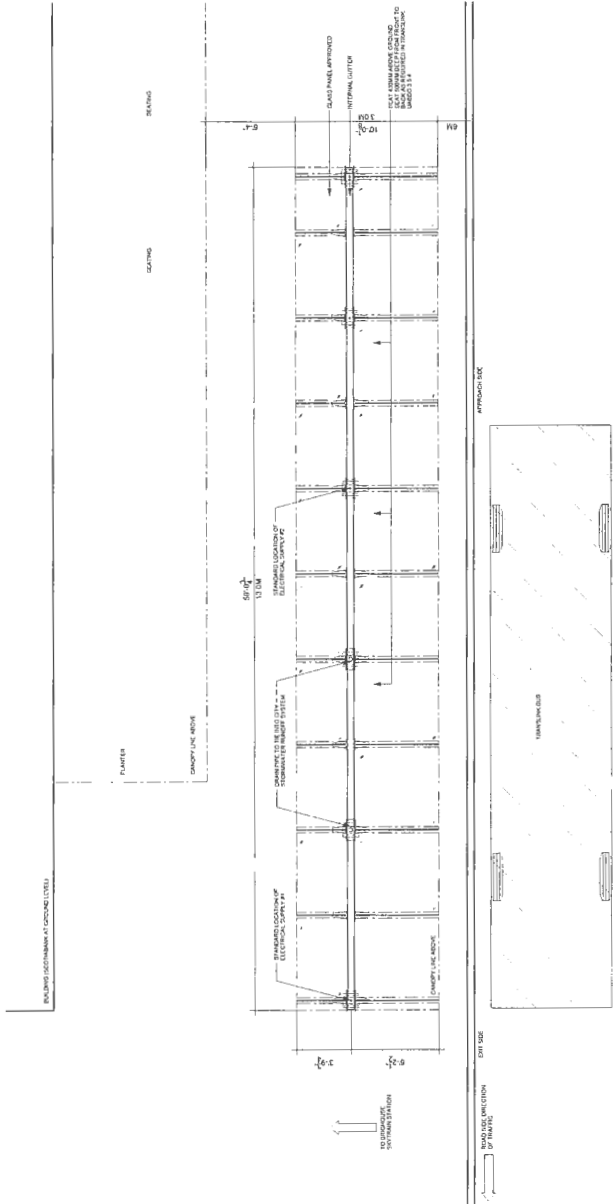
Prepared by:
Kurt Teichgraber
100 - 157 West 5th Ave
Vancouver BC V6J 1N5
604-684-4811
kurt@teichgraber.com



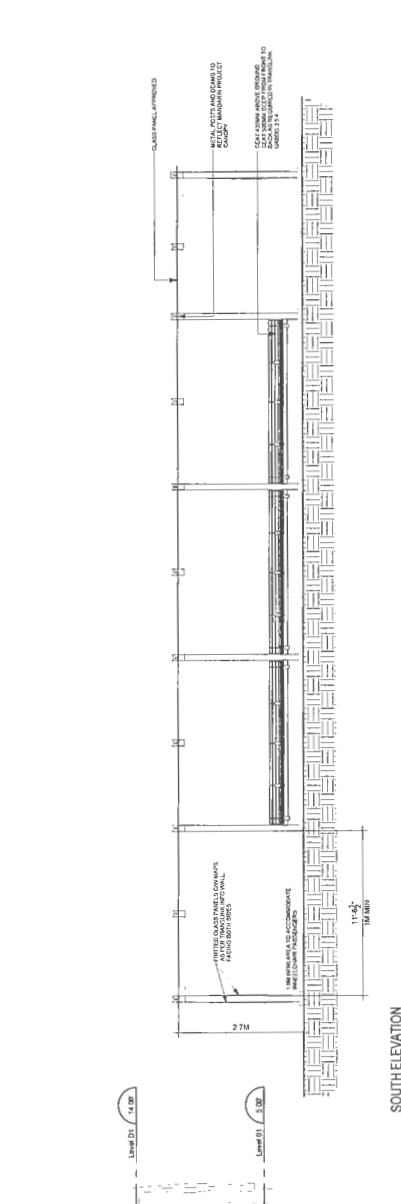
NO.	DATE	DESCRIPTION
1	10/21/2014	Issue for Review
2	10/21/2014	Issue for Review
3	10/21/2014	Issue for Review
4	10/21/2014	Issue for Review
5	10/21/2014	Issue for Review
6	10/21/2014	Issue for Review
7	10/21/2014	Issue for Review
8	10/21/2014	Issue for Review
9	10/21/2014	Issue for Review
10	10/21/2014	Issue for Review
11	10/21/2014	Issue for Review
12	10/21/2014	Issue for Review
13	10/21/2014	Issue for Review
14	10/21/2014	Issue for Review
15	10/21/2014	Issue for Review
16	10/21/2014	Issue for Review
17	10/21/2014	Issue for Review
18	10/21/2014	Issue for Review
19	10/21/2014	Issue for Review
20	10/21/2014	Issue for Review
21	10/21/2014	Issue for Review
22	10/21/2014	Issue for Review
23	10/21/2014	Issue for Review
24	10/21/2014	Issue for Review
25	10/21/2014	Issue for Review
26	10/21/2014	Issue for Review
27	10/21/2014	Issue for Review
28	10/21/2014	Issue for Review
29	10/21/2014	Issue for Review
30	10/21/2014	Issue for Review
31	10/21/2014	Issue for Review
32	10/21/2014	Issue for Review
33	10/21/2014	Issue for Review
34	10/21/2014	Issue for Review
35	10/21/2014	Issue for Review
36	10/21/2014	Issue for Review
37	10/21/2014	Issue for Review
38	10/21/2014	Issue for Review
39	10/21/2014	Issue for Review
40	10/21/2014	Issue for Review
41	10/21/2014	Issue for Review
42	10/21/2014	Issue for Review
43	10/21/2014	Issue for Review
44	10/21/2014	Issue for Review
45	10/21/2014	Issue for Review
46	10/21/2014	Issue for Review
47	10/21/2014	Issue for Review
48	10/21/2014	Issue for Review
49	10/21/2014	Issue for Review
50	10/21/2014	Issue for Review
51	10/21/2014	Issue for Review
52	10/21/2014	Issue for Review
53	10/21/2014	Issue for Review
54	10/21/2014	Issue for Review
55	10/21/2014	Issue for Review
56	10/21/2014	Issue for Review
57	10/21/2014	Issue for Review
58	10/21/2014	Issue for Review
59	10/21/2014	Issue for Review
60	10/21/2014	Issue for Review
61	10/21/2014	Issue for Review
62	10/21/2014	Issue for Review
63	10/21/2014	Issue for Review
64	10/21/2014	Issue for Review
65	10/21/2014	Issue for Review
66	10/21/2014	Issue for Review
67	10/21/2014	Issue for Review
68	10/21/2014	Issue for Review
69	10/21/2014	Issue for Review
70	10/21/2014	Issue for Review
71	10/21/2014	Issue for Review
72	10/21/2014	Issue for Review
73	10/21/2014	Issue for Review
74	10/21/2014	Issue for Review
75	10/21/2014	Issue for Review
76	10/21/2014	Issue for Review
77	10/21/2014	Issue for Review
78	10/21/2014	Issue for Review
79	10/21/2014	Issue for Review
80	10/21/2014	Issue for Review
81	10/21/2014	Issue for Review
82	10/21/2014	Issue for Review
83	10/21/2014	Issue for Review
84	10/21/2014	Issue for Review
85	10/21/2014	Issue for Review
86	10/21/2014	Issue for Review
87	10/21/2014	Issue for Review
88	10/21/2014	Issue for Review
89	10/21/2014	Issue for Review
90	10/21/2014	Issue for Review
91	10/21/2014	Issue for Review
92	10/21/2014	Issue for Review
93	10/21/2014	Issue for Review
94	10/21/2014	Issue for Review
95	10/21/2014	Issue for Review
96	10/21/2014	Issue for Review
97	10/21/2014	Issue for Review
98	10/21/2014	Issue for Review
99	10/21/2014	Issue for Review
100	10/21/2014	Issue for Review

NO.	DATE	DESCRIPTION	BY	REV
1	10/21/2014	Issue for Review	KT	01
2	10/21/2014	Issue for Review	KT	02
3	10/21/2014	Issue for Review	KT	03
4	10/21/2014	Issue for Review	KT	04
5	10/21/2014	Issue for Review	KT	05
6	10/21/2014	Issue for Review	KT	06
7	10/21/2014	Issue for Review	KT	07
8	10/21/2014	Issue for Review	KT	08
9	10/21/2014	Issue for Review	KT	09
10	10/21/2014	Issue for Review	KT	10

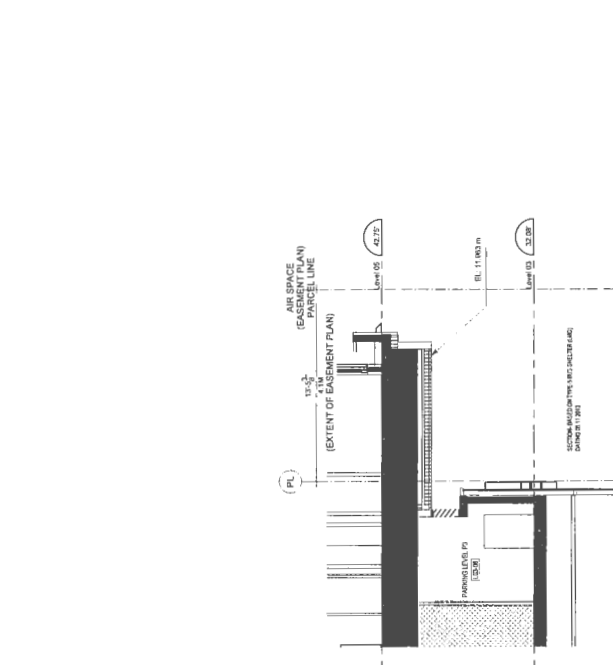
NO.	DATE	DESCRIPTION	BY	REV
1	10/21/2014	Issue for Review	KT	01
2	10/21/2014	Issue for Review	KT	02
3	10/21/2014	Issue for Review	KT	03
4	10/21/2014	Issue for Review	KT	04
5	10/21/2014	Issue for Review	KT	05
6	10/21/2014	Issue for Review	KT	06
7	10/21/2014	Issue for Review	KT	07
8	10/21/2014	Issue for Review	KT	08
9	10/21/2014	Issue for Review	KT	09
10	10/21/2014	Issue for Review	KT	10



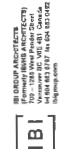
BUS SHELTER PLAN



SOUTH ELEVATION



WEST ELEVATION



TRANSLINK



BUS SHELTER

SCALE:

6302 No 3 ROAD, RICHMOND
DEVELOPMENT PERMIT RE-SUBMISSION
June 03, 2019

1/24" = 1'-0"

4.5-5.5 Poster Case – Double-Sided Info Wall

Product Codes
PCe.iw, 2PCe.iw

Relevant Sign Types
E3, T7

Lines
All

Description
Free standing twin ANSI E double sided poster case, displaying paper based information (4 posters). Two levels of header panel

Materials and construction
External frame Translink Two Part Extrusion to main body top and bottom with aluminum capping plates on sides.

Proprietary hinged extruded aluminum framing system supporting a glass door panel with SkyTrain cam locks, combined header panels to be fabricated, welded and dressed using low carbon steel for Vitreous Enamel finish.

Main structure supported by 101.6mm (4") aluminum posts with 76.2 (3") tapping rail and spun aluminum feet to finish at grade level.

Colors: (See Common Parts and Finishes)

- Colour A
- Colour B
- Colour E
- Colour F
- Colour N

Finishes
All external trim and support structure finished with suitable grade of architectural quality polyester powdercoat or other paint finish appropriate to environment. Powder coat colour Supermetal P4100-919G Sparkle Silver.

Shadow gap detailing between main post supports and main structure together with tapping rail connection saddles powdercoated RAL 5003.

Header Panels: Vitreous Enamel on low carbon steel.

Marie-Louise poster border (applied to inside face of glass) 3M Vinyl Pearl Gray Series 7725-11 or Series 7125_11.

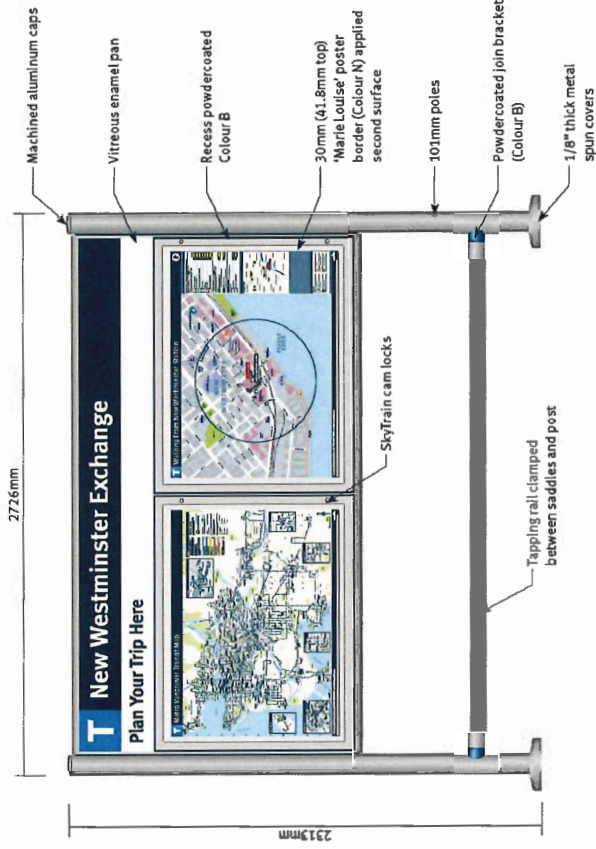
5mm thick clear tempered glass.

Installation
Surface fixed at grade with chemical fixings or cast in studs to concrete base or sidewalk.

Overall dimensions
These are approximate dimensions. See production drawings for exact sizes.

- 2PCe.iw
- Outside dimensions: 2313mm X 2726mm X 249mm

Production drawings reference section
5-2-4-2



Sign Type: E3 – Journey Planning
Product Code: 2PCe.iw