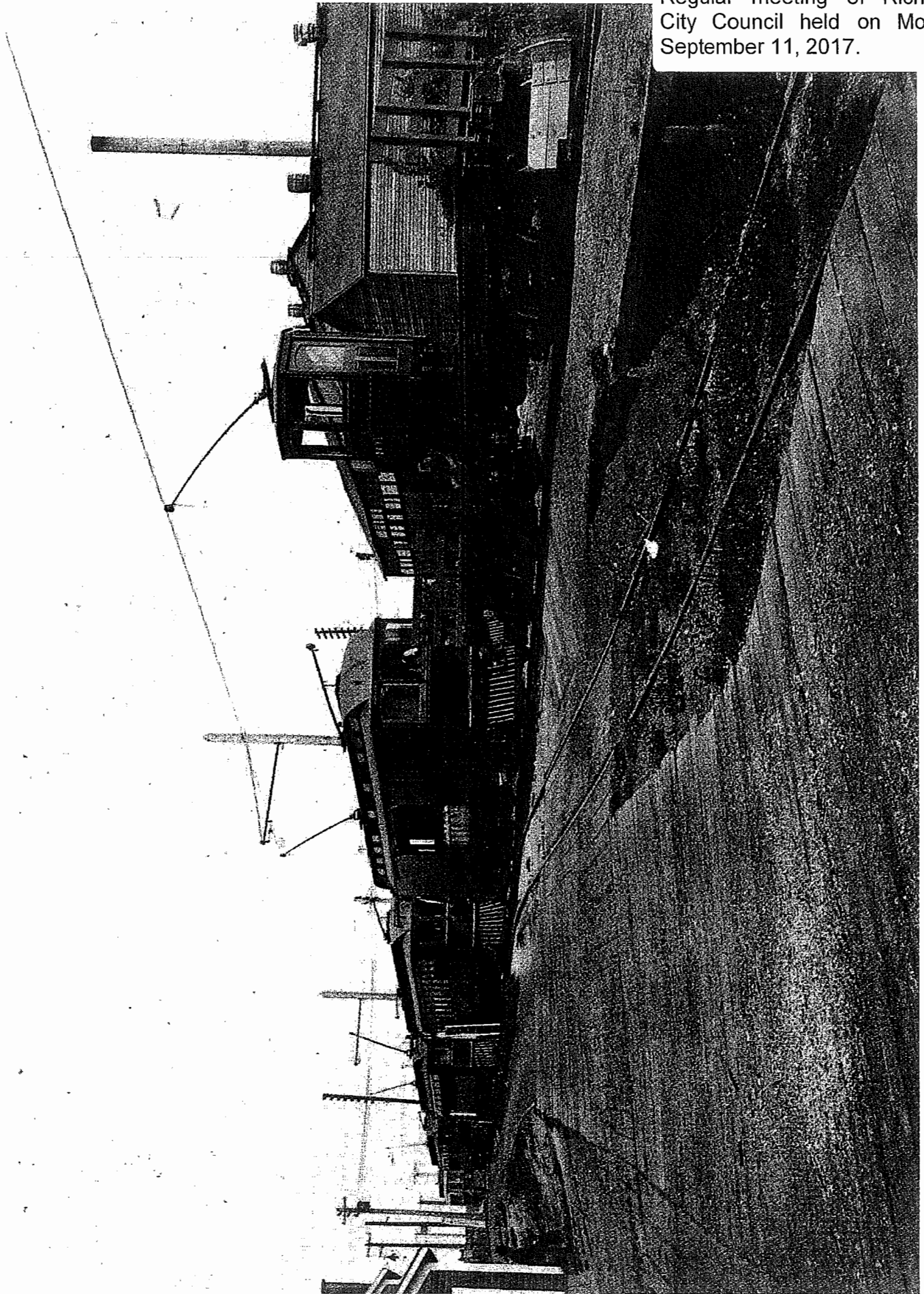
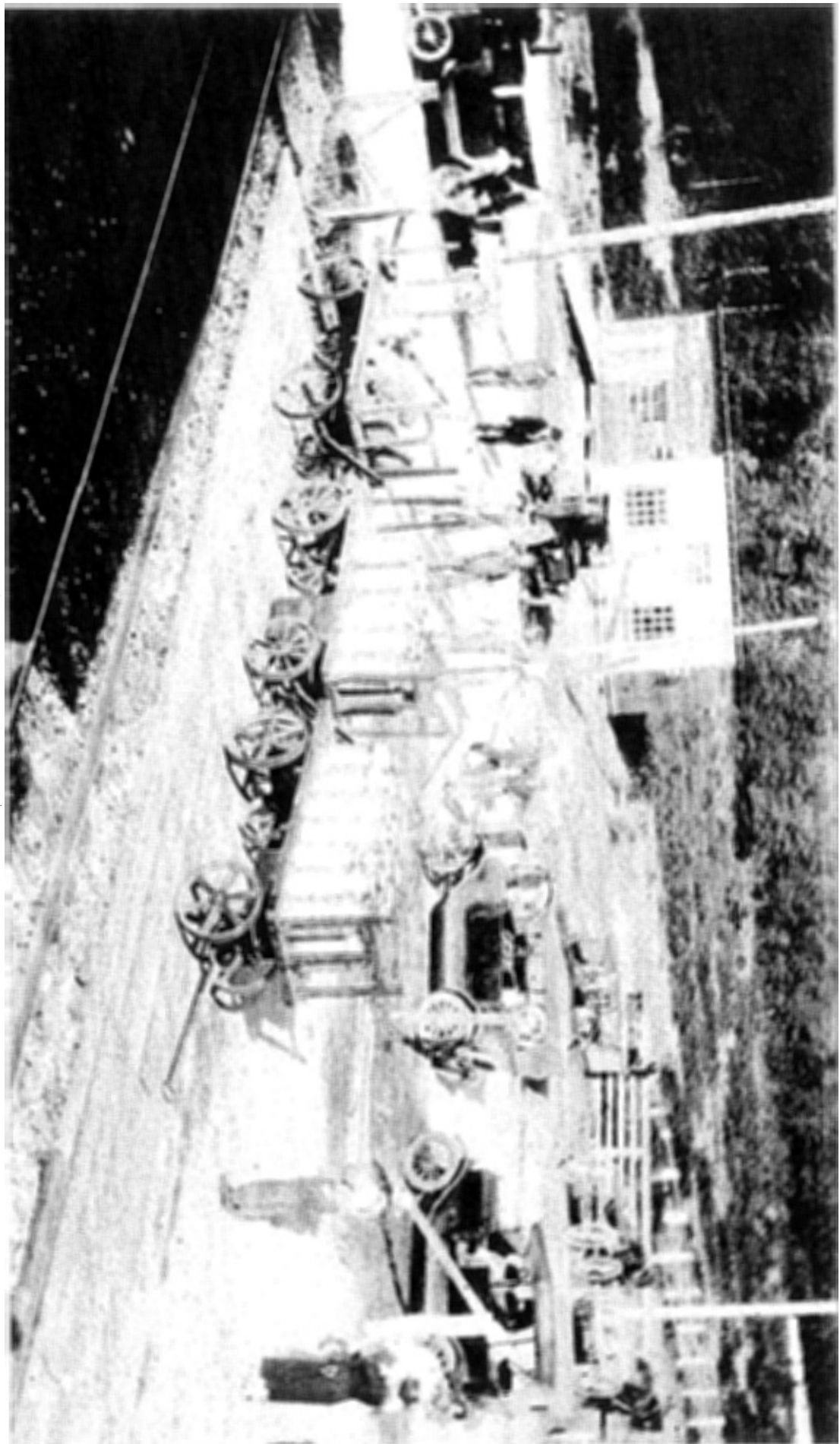


Schedule 1 to the Minutes of the Regular meeting of Richmond City Council held on Monday, September 11, 2017.



Baggage car Steveston to Kitsitano



THE SHORE LINE TROLLEY MUSEUM

Operated by the
BRANFORD ELECTRIC RAILWAY ASSOCIATION

**Help Support the Museum
Become a Regular Member \$40.00**

- An annual individual Ride Pass
- Online and print newsletters
- A 10% discount at our Museum Store
- Discounts on special museum events
- Access to our members-only website
- Invitation to members-only events
- Other membership levels/benefits available
- Access to Car Operator, Restoration and other Training Programs

Have Your Party on the Trolley

Create a unique, exciting event by chartering a vintage trolley for your next birthday, anniversary, fundraiser or holiday get-together!



Check our Website for details, latest updates on Schedules, Events and Discounts at:

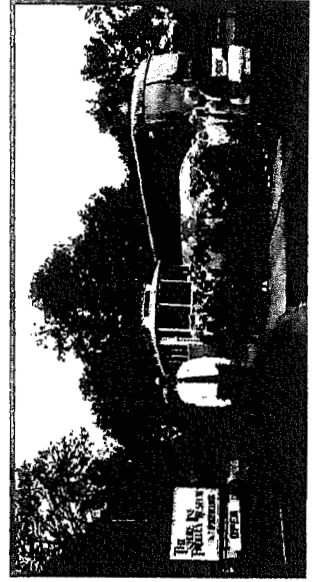
www.ShoreLineTrolley.org

Related Seasonal Websites:

www.HauntedIsle.org & www.SantasTrolley.org

Group and Bundled Day Events

We team with Branford's Chowder Pot III restaurant, Sea Mist Thimble Island Cruise and Tour Bus Companies for full day events. Contact: Coachman International Tours, Hampton Jitney, Perkiomen Tours, Port Jeff Ferry Tours, Prime Time Travel or Rendezvous Travel directly.

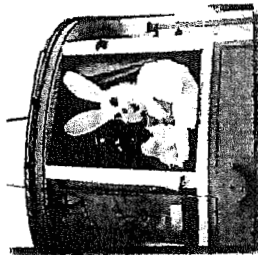


The Branford Electric Railway

is listed on the National Register of Historic Places as the oldest continuously operated suburban trolley line in the United States.

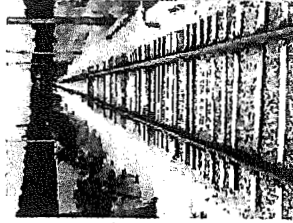
GENERAL OPERATING SEASON:

May - Saturdays and Sundays
Memorial Day through Labor Day - OPEN DAILY
September - Saturdays, Sundays and Labor Day
October - Saturdays and Sundays
November through December - Special Events
First Trolley and Tour at 10:30am. Last 4:30pm.



SPECIALS & HOLIDAY EVENTS:
Easter Bunny, Mother's Day, Antique Car Show, Guest Operators / Rapid Transit Weekends, Father's Day, Fire Truck Show, Ladies Night, Trolley Reading Program, Super Hero's Day, Photography & Merit Badges Night, NexGen Public Safety Solutions Day, Afternoon Art Show, Silent Movie Weekend, Haunted Isle, Pumpkin Patch, Astronomy & Merit Badges Night, Railroad Boy Scout Merit Badge, Santa's Trolley Winter Wonderland

GENERAL FARES: Adults \$10.00, Senior Citizens (62+) \$8.00, Children (2-15) \$6.00.



Educational Partnerships

- Branford and East Haven, CT Libraries
- Astronomical Society of New Haven
- Boy Scouts & Girl Scouts of America
- Shoreline Arts Alliance
- Association of Railway Museums
- Gateway Community College,
- Railroad Engineering Technology Degree

CONTACT US

(203) 467-6927 Info@ShoreLineTrolley.org

The Shore Line Trolley Museum is ...

- A great place for the entire family to have fun and learn how trolleys helped form our communities
- A chance to ride a piece of living history through scenic wildlife waterways in Connecticut
- A way to enjoy special, educational and seasonal programs for adults and kids of all ages



Hear the sound of steel on steel, enjoy the sweet aroma of Connecticut's pristine salt marsh and possible sightings of osprey, egrets, herons and other shoreline plant and animal wildlife.

It's a journey back in time you won't forget! At the carhouse exhibits you'll see trolleys over a century old. Expert operators and tour guides explain how trolleys work and take you back to a time when even small towns had mass transit at nickel fares. Ride all day on a single pass!

17 River Street
East Haven, CT 06512
Information and Charters
(203) 467-6927
Fax (203) 467-7635

THE SHORE LINE TROLLEY MUSEUM
 Operated by the
 BRANFORD ELECTRIC RAILWAY ASSOCIATION

To find out more visit us:

E-mail: Info@ShoreLineTrolley.org

Website: www.ShoreLineTrolley.org



The Shore Line Trolley Museum/
 Branford Electric Railway Association

@SLTrolleyMuseum

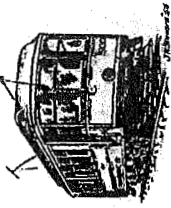
Reach our website - scan code below.



The museum is a 501(c)(3) not-for-profit organization. All contributions are fully tax-deductible to the extent permitted by law.

Photos by: Jennifer Higham Photography

THE SHORE LINE TROLLEY MUSEUM
 Operated by the
 BRANFORD ELECTRIC RAILWAY ASSOCIATION



Ride turn of the last century antique trolleys

Enjoy pristine Connecticut salt marsh views and wildlife

Learn exciting lessons in early transportation history