

SCHEDULE 1 TO THE MINUTES
OF THE GENERAL PURPOSES
COMMITTEE HELD ON
SEPTEMBER 2, 2008



STEVESTON SITE AERIAL



FEATURE KEY

- A 15M WIDE DRIVE ON FLOATING WHARF
- B 30M WIDE DREDGEATE PLACED MATERIAL
- C LARGE VESSEL FLOATING WHARF
- D FLOATING ADMINISTRATION BUILDING
- E HARBOUR ENTRANCE TRAINING WALL
- F HABITAT LAGOON
- G PUBLIC BEACH
- H ARCHITECTURAL LIGHT HOUSE
- I ROCK RIP RAP SIDE SLOPE ENTRANCE
- J FISH AUCTION BUILDING

STEVESTON COMMUNITY FISHING HARBOUR -
LONG TERM DEVELOPMENT PLAN

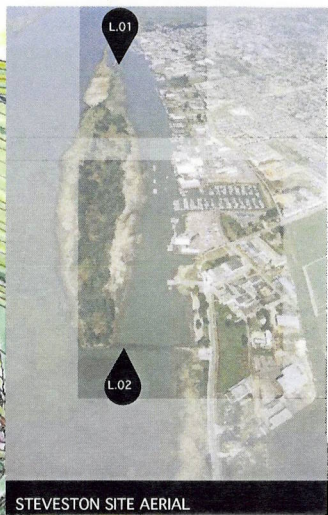
1	12.08.07	CONCEPT FOR CLIENT REVIEW
No.	Date	REVISION

DESIGN BY	DAVID BULL
DRAWN BY	DAVID BULL
APPROVED	
DATE	08.08.07
SCALE	AS SHOWN

L.01



- ### FEATURE KEY
- A TIDAL FLAT MARSH
 - B ROCK TRAINING WALL
 - C TIDAL FISH PASSAGE
 - D SHEAR BOOM REPLACEMENT PROMENADE
 - E BENEFICIAL USE OF COARSE SAND DREDGEATE LOCATION
 - F TIDAL ACCESS
 - G EXISTING DEBRIS SHEAR BOOM



STEVESTON SITE AERIAL

STEVESTON COMMUNITY FISHING HARBOUR - LONG TERM DEVELOPMENT PLAN

1	12.08.07	CONCEPT FOR CLIENT REVIEW
No.	Date	REVISION

DRAWN BY	BOB PAIN
CHECKED BY	BOB PAIN
APPROVED	
DATE	02.01.07
SCALE	AS SHOWN

L.02