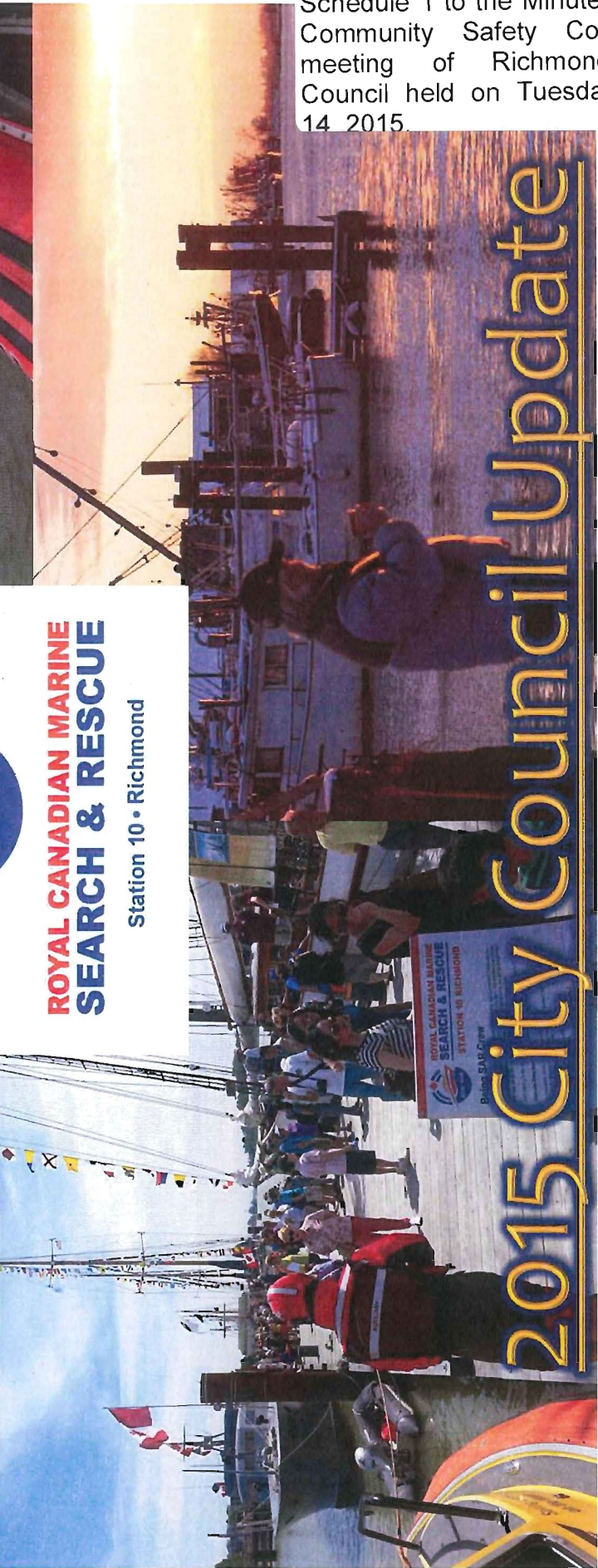


Schedule 1 to the Minutes of the Community Safety Committee meeting of Richmond City Council held on Tuesday, April 14 2015.

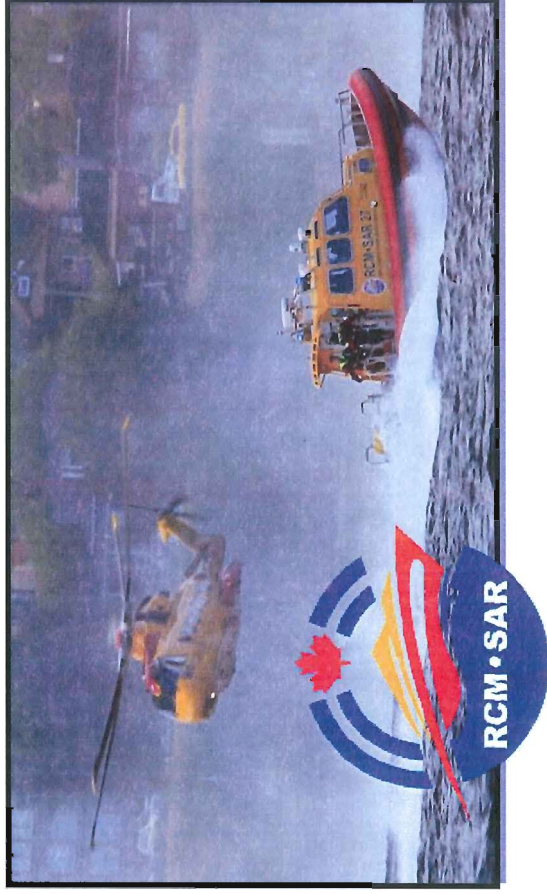
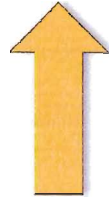
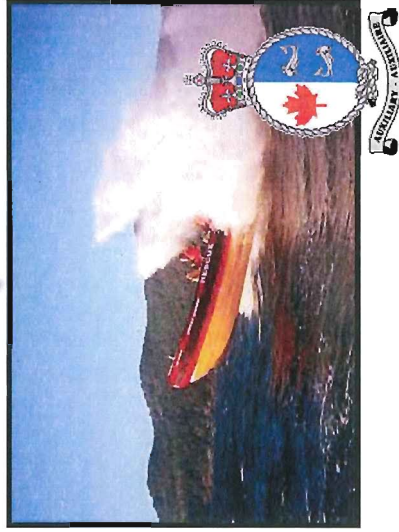
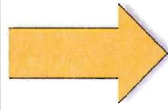
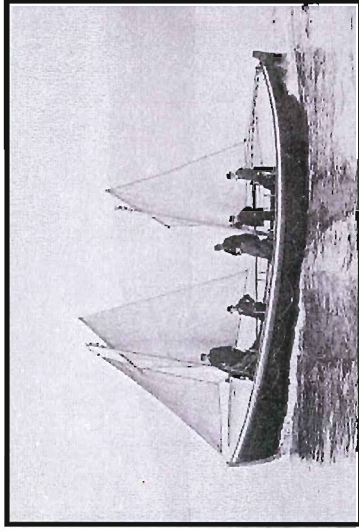


**ROYAL CANADIAN MARINE
SEARCH & RESCUE**
Station 10 • Richmond



2015 City Council Update

History



- Volunteer Lifeboat's Est. 1907 on West Coast
- **Royal Canadian Marine Search and Rescue** (RCMSAR) was formerly known as **Canadian Coast Guard Auxiliary –Pacific.**

Who We Are

* **Maritime Services We**

**Provide to our
community:**

- * Search
- * Rescue
- * Situational Awareness
- * Quick Resolution to potential marine incidents

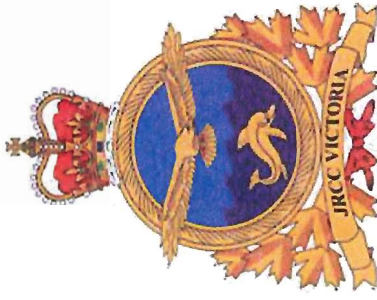
Motto:
“Saving Lives on the Water”

* **Training Standards:**

- * ROC-M
- * TC MBFA
- * TC MAFA
- * SARNAV 1 / TC SVOP
- * SARNAV2 / TC SEN/L
- * CCG R.H.I.O.T. School
- * Int’l Coxswain Courses



How We Fit



- * Tasked through JRCC in Victoria, today

- * Tasked on our own (35%)



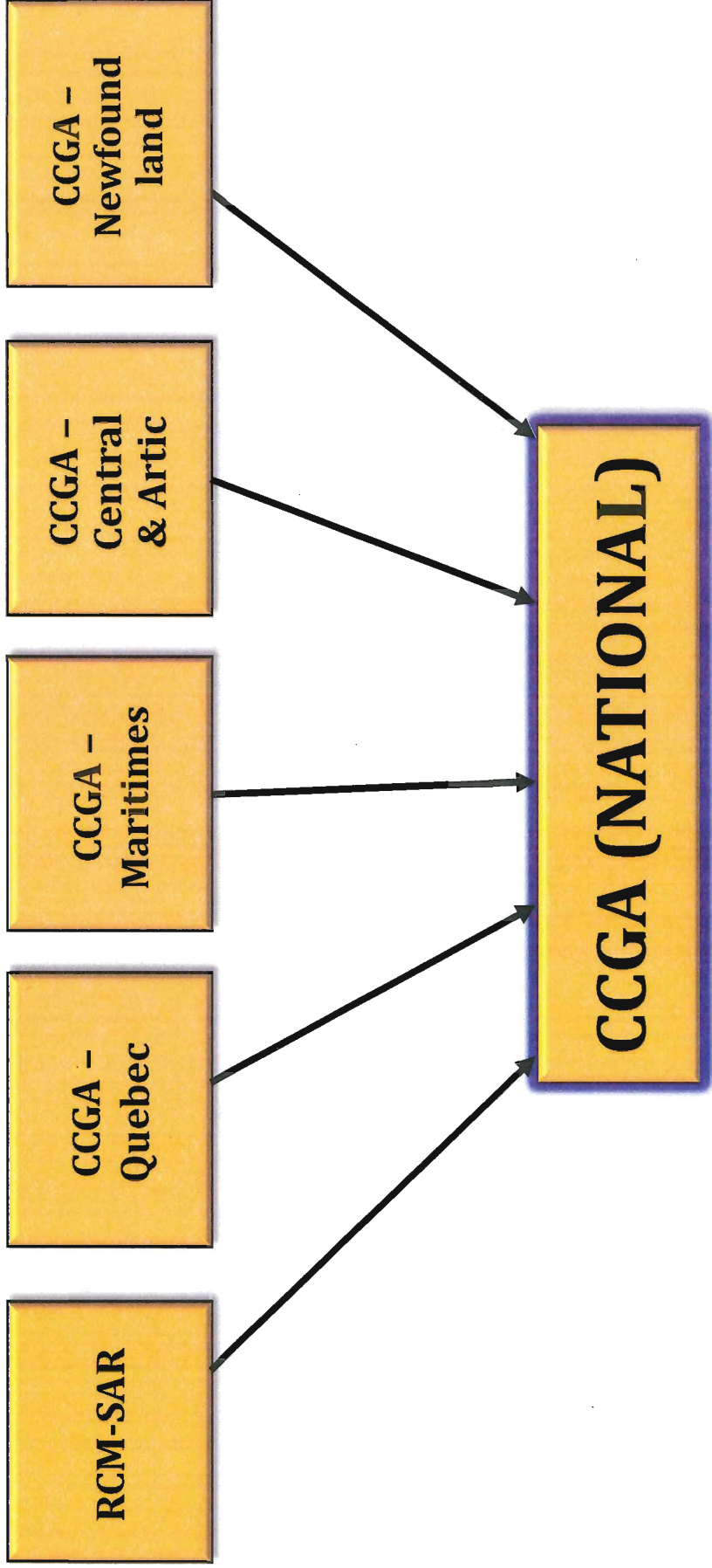
- * Tasked to assist maritime SAR System (65%):

- * CCG

- * RCAF

- * Municipal Depts

National Structure



Station 10 - SAR Prevention

- Ships to Shore Festival
- Britannia Maritime Festival
- Steveston Dragon Boat Festival
- Celebration of Light



Celebration of Light 2014

July 26th, July 30th, Aug 2nd

PMV & JRCC
combined
Marine Operations
and SAR Plan

- Shelter Island Marina Day
- Fisherman's Memorial
- Richmond Yacht Club Sailpasts *
- Southern Straits Yacht Race

Station 10 – Community Involvement

- Rotary Duck Race*
- SOS Children's Run*
- Women's Media Classic Golf Tourney*
- Fraser River Workboat Parade
- Variety Club Boat For Hope*



- Worksafe Partner / Shoreline Clean-up
- Vancouver Boat Show
- "Ready Set Wear-it" National Boating Safety Campaign
- Annual CCG Sea Island Base Visit
- Santa Comes to Steveston

Station 10 - Vessels

The B.R. Hastings

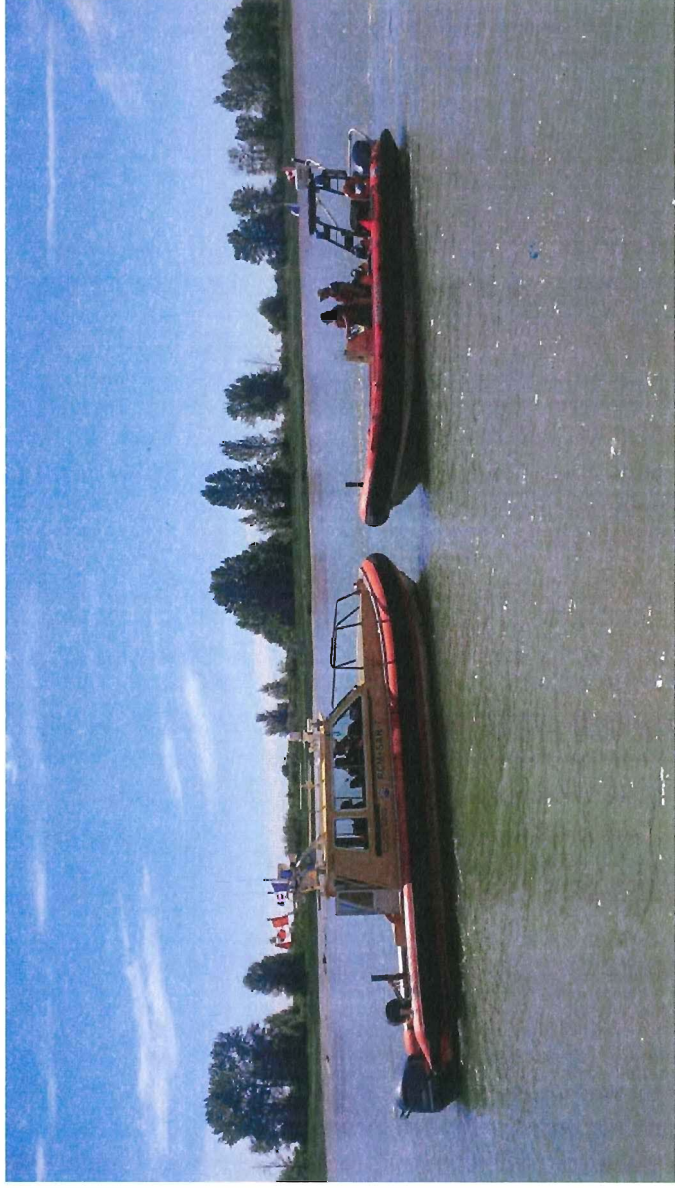
Titan 300 Cabin RHI

Launched 2006

The Jimmy Ng

Titan 249XL Delta RHI

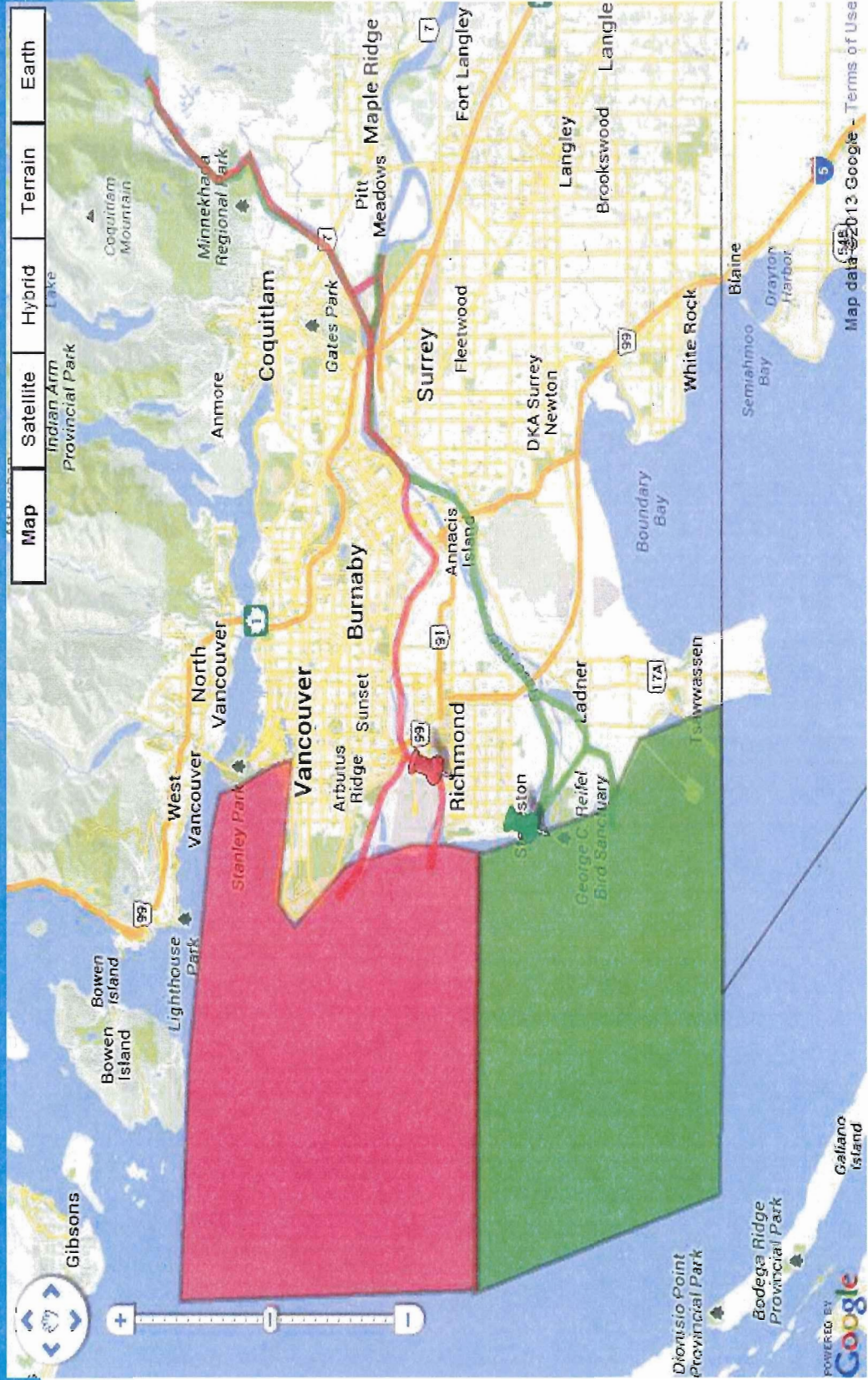
Launched 2005



* Community Owned Vessels

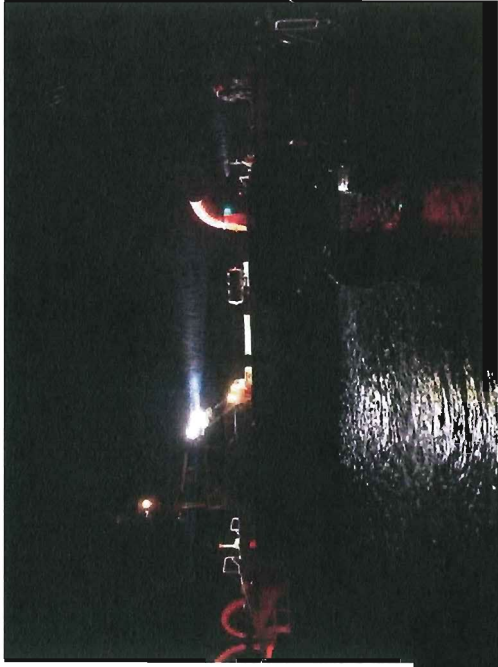
- * Governed by Not-for-profit Societies
- * Steveston Primary Posture
- * Middle Arm Backup Posture

Station 10 Geographic Area of Responsibility



Station 10 - Stats

- 32 SAR Crew volunteers provide 24/7 pager response
- Crew rotations one evening each week and one weekend each month .

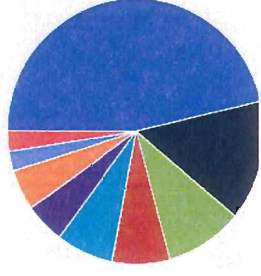
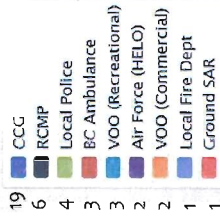


- 16min average response
- Total 1500 person hrs

	2013	2014	2015
Training	101	112	39
Hours	236	246	91
Taskings	39/38	62/57	17
Hours	59.7	126	21

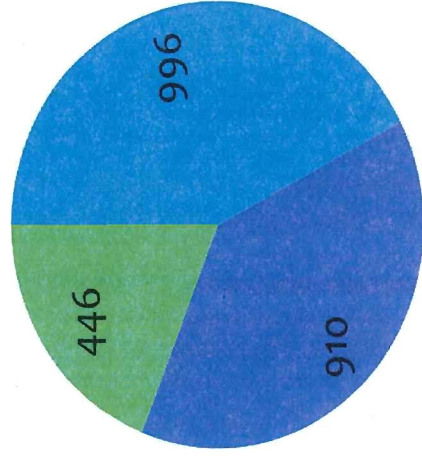
2014

Other Agencies
By Mission Count



Station 10 - Stats

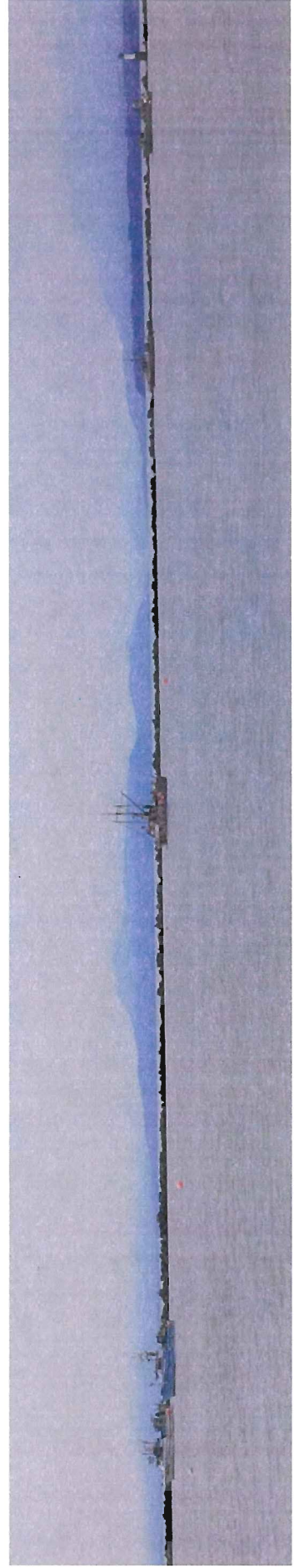
Total Person Hours



■ Boating Safety & Community

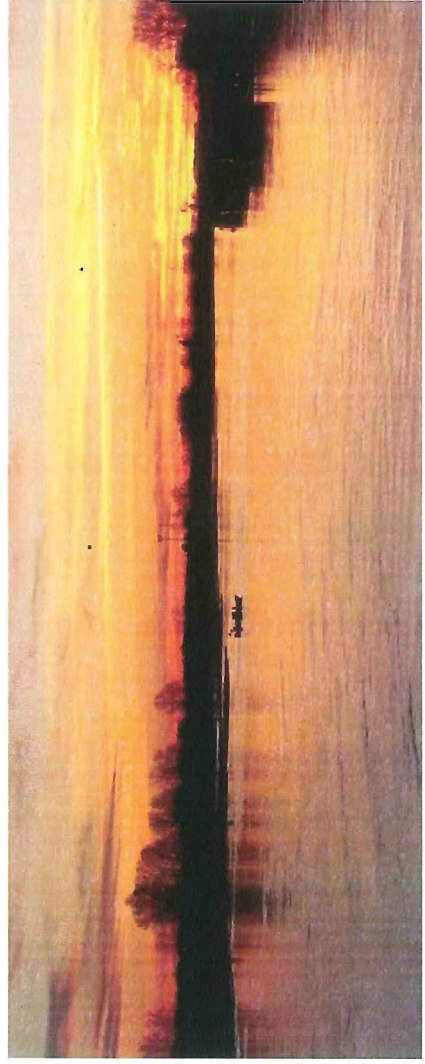
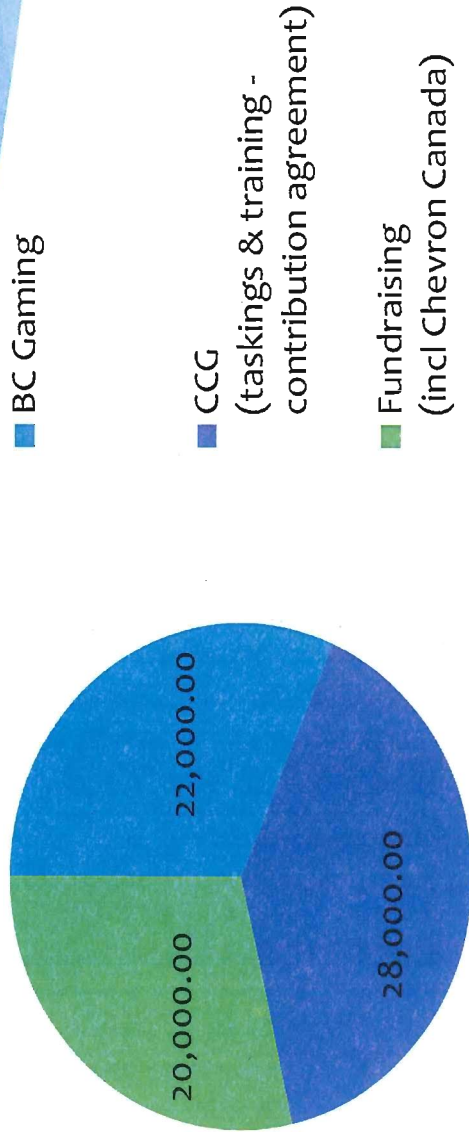
■ Admin & Maintenance

■ Patrols, Curriculum, Other



Station 10 - Funding Success

Estimate as of Jan 2015



2015 Ahead

- * Challenge: 3800 person hrs in 2014
- * Jimmy Ng Vessel Mid-Life refit
- * Expanding Pleasure Craft Safety Check Program
- * Kids Don't Float Opportunity
- * **Maintain 24/7 readiness in Steveston**
- * Station Locations
- * Continue to grow membership
- * Maintain high level community involvement
- * Station 10 Strat. Plan / Vessel renewals

Thank you

Email: info@rcmsar10.org

Phone: 604-227-9909

Web: www.rcmsar10.org

