



City of Richmond

Report to Committee

To: Community Safety Committee
From: Rendall Nessel
Officer In Charge
Richmond Detachment

Date: March 23, 2009
File: 09-5350-00/Vol 01

Re: 2008 RCMP Year End Crime Statistics

Staff Recommendation

That the 2008 RCMP's Year End Crime Statistics be received for information

Rendall Nessel
Officer In Charge
Richmond Detachment
(604-278-1212)

Att. RCMP Year End Crime Statistics

FOR ORIGINATING DEPARTMENT USE ONLY		
CONCURRENCE OF GENERAL MANAGER 		
REVIEWED BY TAG	YES <input checked="" type="checkbox"/>	NO <input type="checkbox"/>
REVIEWED BY CAO	YES <input checked="" type="checkbox"/>	NO <input type="checkbox"/>

Staff Report

Origin

The Officer In Charge of the Richmond RCMP acknowledges and supports that the City of Richmond should be kept informed on matters pertaining to policing in the community and has developed the framework to provide regular reporting cycles

Analysis

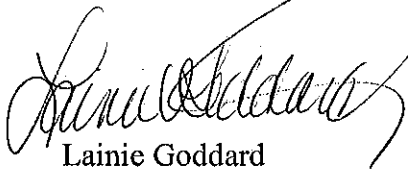
Regular information flow between the City and the Detachment will include information items of interest and statistic information when appropriate. Attached is a statistical report from the Richmond Detachment's Crime Analysts

Financial Impact

None

Conclusion

The Officer in Charge, Richmond RCMP has developed a framework and will continue to provide an annual Crime Statistics report to the Community Safety Committee.



Lainie Goddard
Manager, RCMP Administration
(604-207-4767)



DECEMBER 2008 & YEAR-END CRIME STATISTICS

This chart illustrates December 2008 monthly statistics; the Annual Totals column indicates year-end totals for 2007 and 2008.
TREND: The trend arrows reflect the overall trend (increasing/decreasing/stable) of the past two years. (See graphs below for more detail)

DECEMBER 2008	CURRENT	PREVIOUS MONTH		SAME MONTH, PREVIOUS YEAR		ANNUAL TOTALS			TREND
	Dec-08	Nov-08	% Change	Dec-07	% Change	2007	2008	% Change	
TOTAL CRIMINAL CODE	989	1090	-9.3%	935	5.8%	13219	13277	0.4%	→
<i>Robbery</i>	9	13	-30.8%	11	-18.2%	132	116	-12.1%	→
<i>Assault</i>	64	45	42.2%	48	33.3%	595	630	5.9%	→
<i>Assault w/ Weapon</i>	13	17	-23.5%	12	8.3%	162	163	0.6%	→
<i>Sexual Assault</i>	2	8	-75.0%	10	-80.0%	82	55	-32.9%	→
VIOLENT CRIME	106	111	-4.5%	86	23.3%	1018	1138	11.8%	↗
<i>Business B&E</i>	42	54	-22.2%	35	20.0%	668	503	-24.7%	↘
<i>Residential B&E</i>	70	78	-10.3%	40	75.0%	577	709	22.9%	↗
<i>MV Theft</i>	37	34	8.8%	36	2.8%	672	512	-23.8%	↘
<i>Theft From MV</i>	172	163	5.5%	142	21.1%	2362	2381	0.8%	→
<i>Theft</i>	113	117	-3.4%	142	-20.4%	1576	1388	-11.9%	↘
<i>Shoplifting</i>	40	62	-35.5%	24	66.7%	522	567	8.6%	→
<i>Metal Theft</i>	1	7	-85.7%	10	-90.0%	238	179	-24.8%	N/A
<i>Fraud</i>	35	49	-28.6%	55	-36.4%	639	544	-14.9%	↘
PROPERTY CRIME	529	595	-11.1%	493	7.3%	7478	7080	-5.3%	↘
<i>Arson - Property</i>	3	11	-72.7%	4	-25.0%	131	119	-9.2%	→
OTHER CRIMINAL CODE	354	384	-7.8%	356	-0.6%	4723	5059	7.1%	↗
<i>Drugs</i>	71	86	-17.4%	73	-2.7%	1201	1172	-2.4%	→

OVERVIEW

Violent Crime: The overall increase in this category is due to changes in UCR scoring that came into effect on 2008-09-09; all previous PRIME data was also re-scored. The most significant difference is the Harass/Obscene Phone Call offence type, which was formerly a 3000-series offence but is now a 1000-series Persons offence. This change is reflected in Richmond Monthly Stats from July 2008 onwards.

Otherwise, all major Persons offences are stable overall.

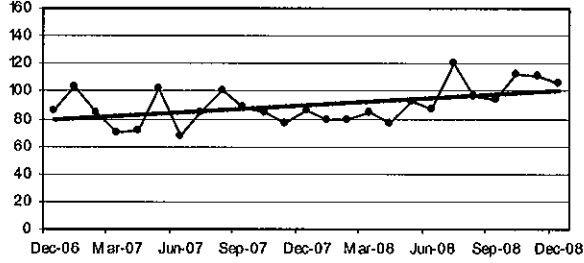
Property Crime: Overall, Property Crime continues to show reductions on the two-year trend line. However, monthly totals generally increased as 2008 progressed, while in 2007 totals decreased as the year went on. Residential B&Es experienced a greater increase than any single offence type charted above. Residential B&Es have increased 22.9% from 2007 to 2008, and there has been a noticeable spike in the last quarter of 2008, with as many as 79 Residential B&Es in a month.

Business B&Es, however, continue to decrease long-term. All other major Property offences remain stable or display reductions on the two-year trend line.

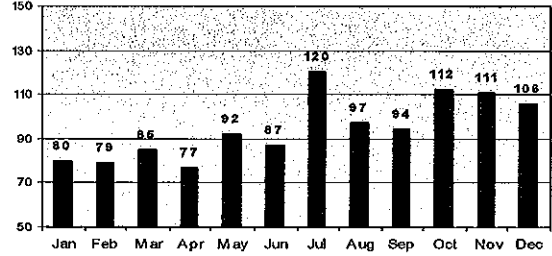
Other Criminal Code: There is a slight increase in this category on the two-year trendline. Total 2008 Criminal Code offences are nearly identical to 2007 figures.

TOTAL: VIOLENT CRIME

TWO YEAR TREND LINE

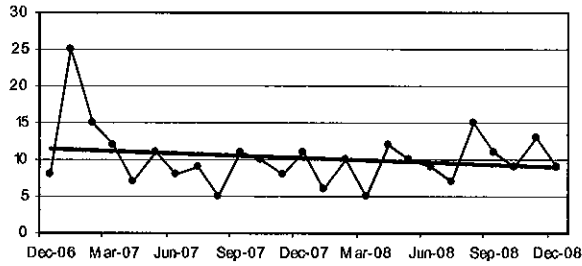


2008 MONTHLY TOTALS

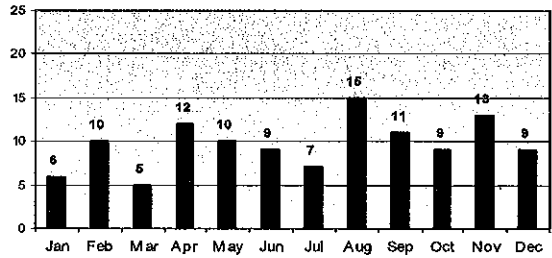


ROBBERY

TWO YEAR TREND LINE

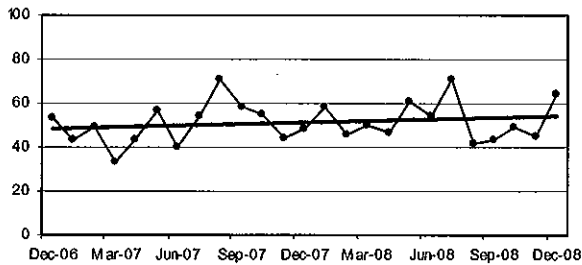


2008 MONTHLY TOTALS

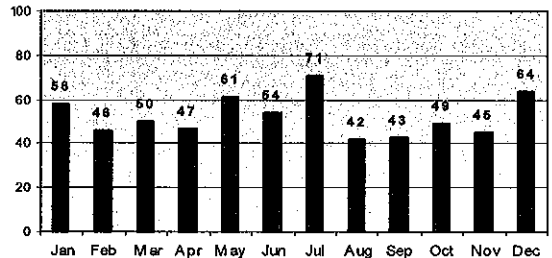


ASSAULT

TWO YEAR TREND LINE

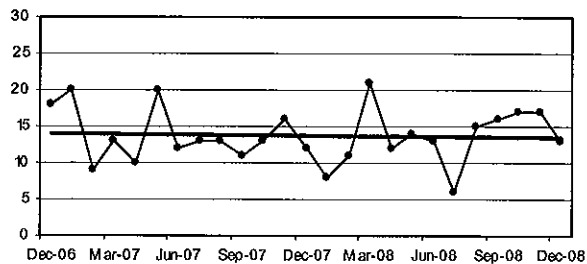


2008 MONTHLY TOTALS

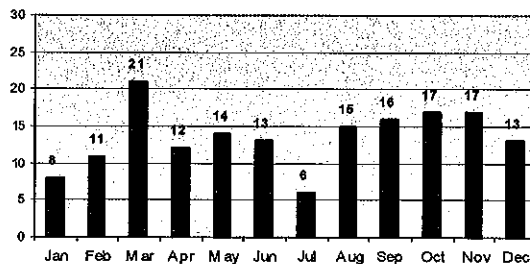


ASSAULT W/ WEAPON

TWO YEAR TREND LINE

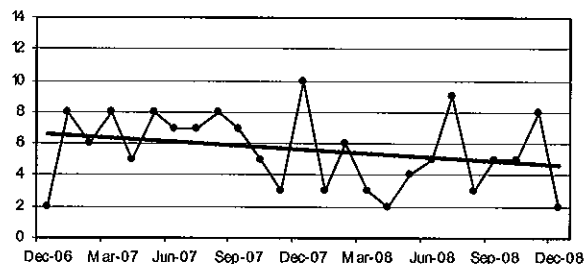


2008 MONTHLY TOTALS

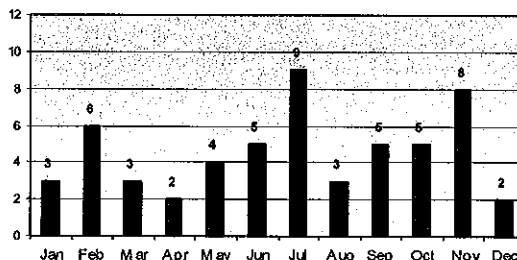


SEXUAL ASSAULT

TWO YEAR TREND LINE

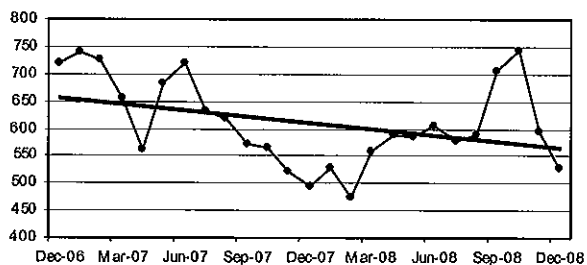


2008 MONTHLY TOTALS

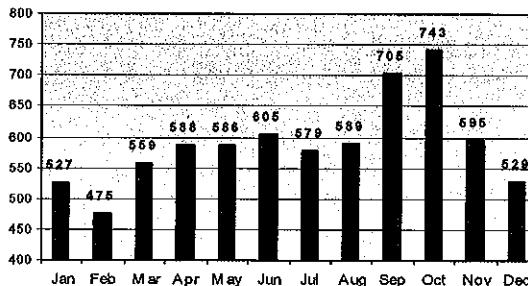


TOTAL: PROPERTY CRIME

TWO YEAR TREND LINE

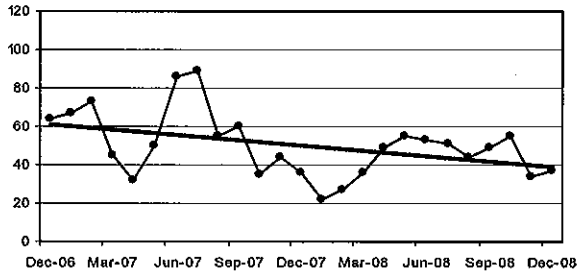


2008 MONTHLY TOTALS

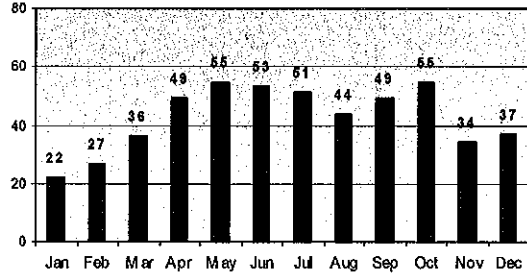


MOTOR VEHICLE THEFT

TWO YEAR TREND LINE

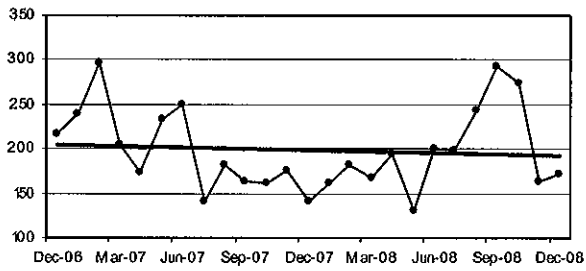


2008 MONTHLY TOTALS

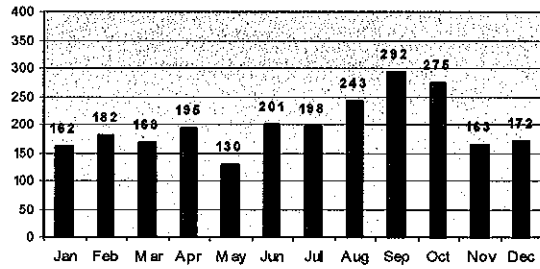


THEFT FROM MOTOR VEHICLE

TWO YEAR TREND LINE

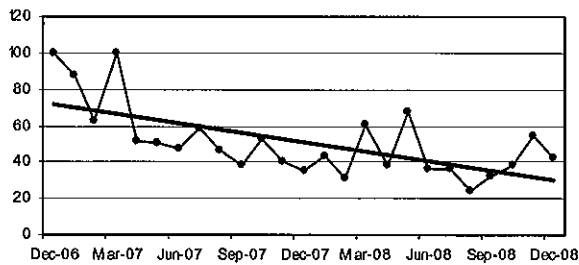


2008 MONTHLY TOTALS

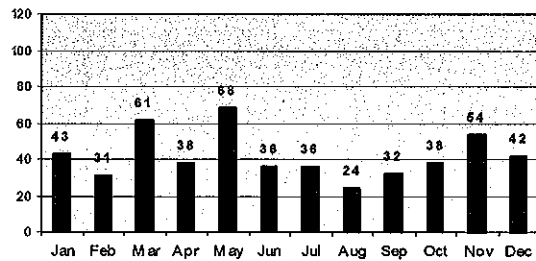


BUSINESS BREAK & ENTER

TWO YEAR TREND LINE

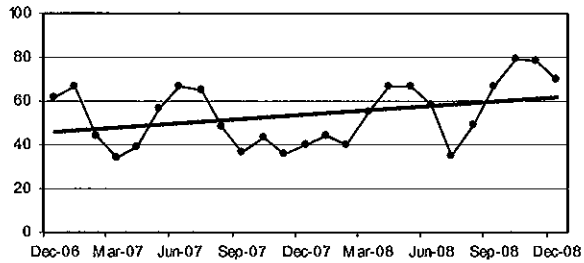


2008 MONTHLY TOTALS

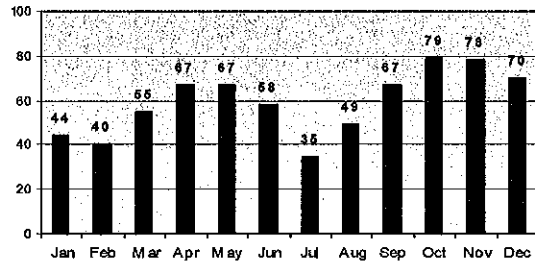


RESIDENTIAL BREAK & ENTER

TWO YEAR TREND LINE

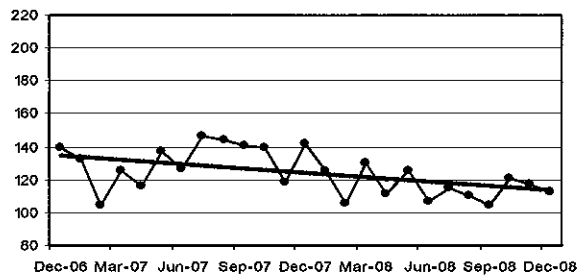


2008 MONTHLY TOTALS

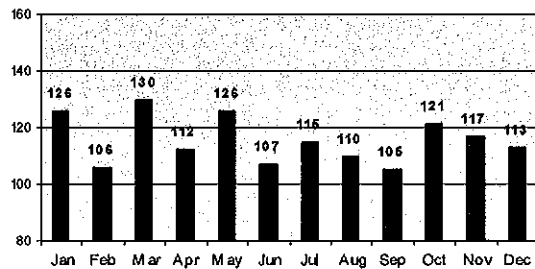


THEFT – OVER/UNDER \$5000

TWO YEAR TREND LINE

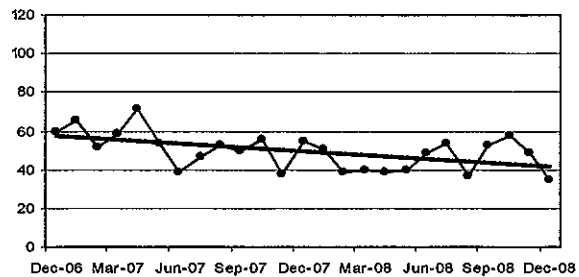


2008 MONTHLY TOTALS

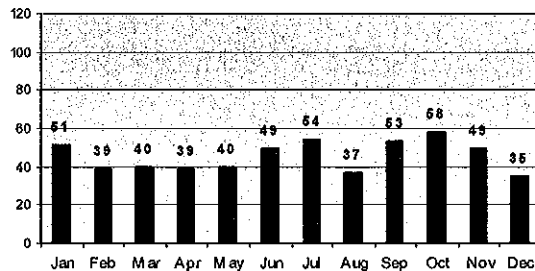


FRAUD

TWO YEAR TREND LINE

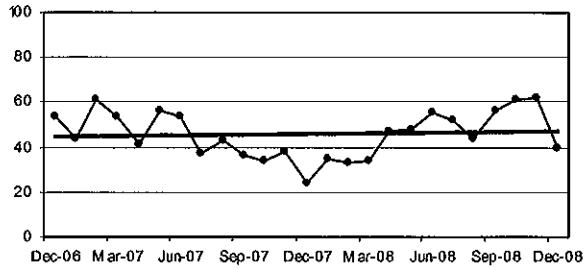


2008 MONTHLY TOTALS

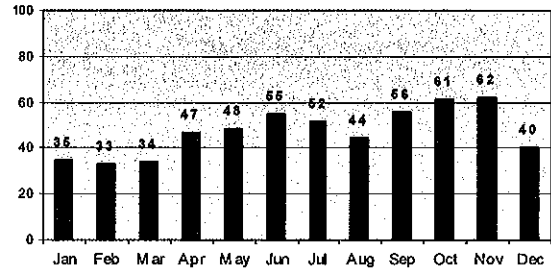


SHOPLIFTING

TWO YEAR TREND LINE

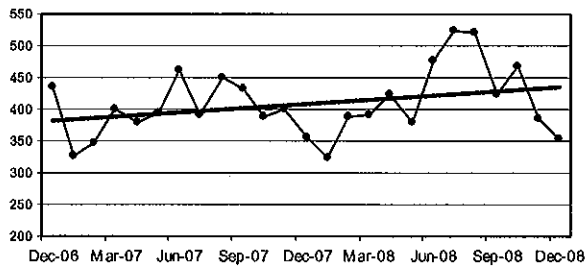


2008 MONTHLY TOTALS

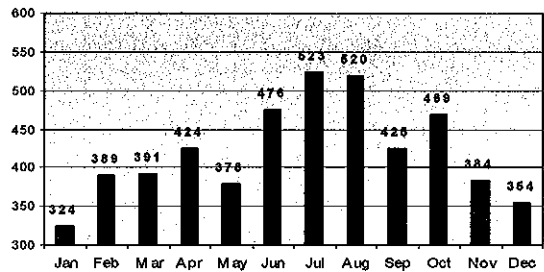


TOTAL: OTHER CRIMINAL CODE OFFENCES

TWO YEAR TREND LINE

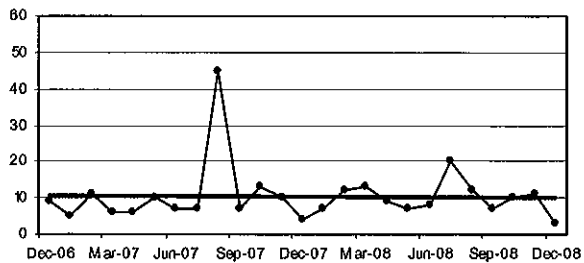


2008 MONTHLY TOTALS

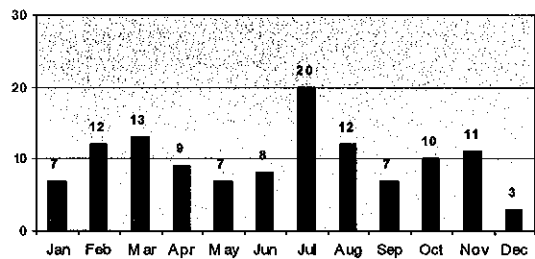


ARSON

TWO YEAR TREND LINE

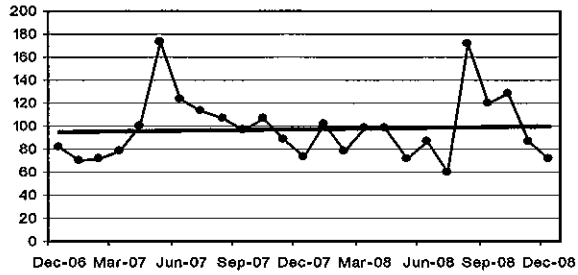


2008 MONTHLY TOTALS



DRUGS

TWO YEAR TREND LINE



2008 MONTHLY TOTALS

