



City of Richmond

Report to Committee

To: Community Safety Committee

Date: February 25, 2011

From: Rendall Nessel
Officer In Charge,
Richmond RCMP Detachment

File: 09-5000-01/2010-Vol
01
(11.11)

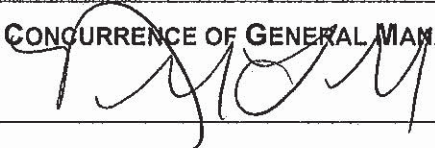


Re: RCMP's Monthly Report –January 2011 Activities

Staff Recommendation

That the OIC's report entitled "RCMP's Monthly Report – January 2011 Activities" dated February 25, 2011, be received for information.



Rendall Nessel
Officer In Charge, Richmond RCMP Detachment
(604-278-1212)

FOR ORIGINATING DEPARTMENT USE ONLY		
CONCURRENCE OF GENERAL MANAGER 		
REVIEWED BY TAG	YES  <input checked="" type="checkbox"/>	NO <input type="checkbox"/>
REVIEWED BY CAO	YES  <input checked="" type="checkbox"/>	NO <input type="checkbox"/>

Origin

The Officer In Charge of the Richmond RCMP Detachment acknowledges and supports that the City of Richmond should be kept informed on matters pertaining to policing in the community and has developed a framework to provide regular reporting cycles.

Analysis

Below is the RCMP's Monthly Report -- January 2011 Activities.

Noteworthy Files:**Two Deceased People Found Inside Richmond Hotel**

On January 8th around 6 p.m. the Detachment received a phone call from staff at a local hotel requesting to check on the well being of guests that failed to check out as scheduled. Upon arrival officers located two deceased, a 50-year-old female and a 55-year-old male, both Richmond residents. Autopsies have been conducted and investigators are confirming that one individual was the victim of a homicide while the other was a victim of self-inflicted injuries. The Richmond Detachment Police Based Victim Services Unit responded and provided assistance and support to a number of extended family members and will continue to do so into the future.

Theft From Auto Awareness and Prevention

Theft from auto is a crime of opportunity and preventable. By following a few basic rules one can eliminate the likelihood of becoming a victim.

Tips to dissuade thieves stealing from vehicles:

- Remove valuables from the vehicle. Never leave any items in plain view as doing so provides an easy target and attracts attention. Valuables may include loose change, cigarettes, lighters, CD's, sunglasses and clothing. If it can be seen, it can be stolen.
- Park in well lit open areas. When at home, park in the garage and lock both the vehicle and garage.
- Remove portable accessories such as stereo faceplates and Global Positioning Systems (GPS). It is important to remember that GPS's are usually programmed with home addresses. Choose a garage door opener that fits on the key ring rather than a model that clips on the visor. The combination of having the GPS and garage door opener stolen from a vehicle allows thieves easy access to residences.

- Install an alarm. Alarms not only deter theft from the vehicle but theft of the vehicle as well. This does not mean that it is safe to leave valuables in a vehicle. All it takes is a smashed window for thieves to quickly grab what they want and flee.
- Use a locking device on the steering wheel. Not only does this prevent the vehicle from being stolen, it also tells thieves that a responsible person owns the vehicle and the likelihood of valuables left in it is low.

School Bus Safety

The Detachment's Road Safety Unit focused on school bus safety in an effort to make the community a safer place. Every year children are injured or killed in school bus related incidents. Some are as a result of a collision between their bus and another vehicle while others are injured or killed as they fail to clear the area around the bus and are struck by oncoming traffic. Parents can keep their children safe by raising their awareness of potential hazards while riding a school bus. Drivers can make school bus safety a priority by obeying the rules of the road.

To increase safety parents should ensure children follow these tips:

- Wear bright coloured clothing, especially if they wait for the bus before sunrise or if they get home after dark. It is also a good idea to place reflective tape or material on their outer garments and backpacks to increase visibility.
- Stay seated while on the bus.
- Move away from the bus when exiting so the bus driver can see that the child has safely cleared the bus and is away from traffic. Remind children to stay away from the bus' wheels at all times.
- Be aware of their surroundings and any vehicular traffic near them. Let children know that they shouldn't assume that vehicles will stop for them or that drivers even see them. If a child is required to cross the street, remind them to look both ways and that traffic is stopped before crossing. Tell the child to be aware of anything in their path that may cause them to stumble.
- Never venture back out into the roadway if they drop something while crossing the road. Suggest that they get help from a trusted adult nearby.

Drivers are reminded that school bus traffic laws were created to keep children safe while in transit. Ignoring laws associated with school buses is reckless and puts children at risk. Drivers are required to drive defensively and slow down to 30 km/h in school zones. Of note is that fines increase for speeding in a school zone. Slowing down allows the driver to see more of what is going on around the vehicle and enables the driver to react quicker if required to stop suddenly.

Children are easily distracted by a variety of things and may not necessarily be paying attention to what's going on around them and may unknowingly venture out into oncoming traffic.

Section 149 of the Motor Vehicle Act states that it is illegal to overtake or pass a school bus that is stopped with its emergency red lights flashing or its stop arm extended. Disobeying this law will result in a fine of \$167. Vehicles following a school bus must stop and wait until flashing lights are turned off and the stop arm is retracted. It is important to be aware of the possibility that children may dart out from behind the bus and not to assume it is safe to proceed just because the lights have stopped flashing. Vehicles approaching a school bus head on with its emergency lights activated or stop arm extended are required to stop if there is no physical barrier separating the lanes of traffic.

Auxiliary Constables

By the end of 2010 Richmond Detachment had 43 Auxiliary Constables. During the year, Auxiliary Constables recorded 8,286 volunteer hours, with 61% of all hours dedicated to community policing programs and events. This was an average of 193 hours of service per member; well over the mandated commitment of 160 hours each. 3 Auxiliary Constables contributed over 500 hours each: A/Cst Alan Chang (630 hours), A/Cst Darren Bygrave (684 hours), and A/Cst Catterina Rois (1,004 hours)

Summary of Auxiliary Constable Duties for January 2011:

Auxiliary Constables have concentrated on community policing programs, such as Home Security Checks, Speed Watch, Business Watch, Safety Talks, YVR Patrols and Coastal Watch. In 2011, the Auxiliary Program will also be now participating in the SAFE Schools Project, and Business Security Assessments.

Road Safety Unit

The Road Safety Unit applied high visibility enforcement operations at different schools throughout the week. There have been an unusually high number of complaints from school bus drivers about drivers refusing to obey the flashing red lamps. A press release was issued reminding drivers and parents of the dangers around school buses that are stopped and the rules regarding the flashing lights. The Road Safety Unit is monitoring the situation.

Richmond Detachment Traffic Statistics

Name	Act	Example	Nov	Dec	Jan
Violation Tickets	Provincial Act Offences	Speeding	1135	1042	1137
Notice & Orders	Equipment Violations	Broken Tail-light	399	584	630
Driving Suspension	Motor Vehicle Act	24 hour driving prohibition for alcohol or drugs	53	22	38
Parking Offences	Municipal Bylaw	On or off the street Municipal parking offences	21	29	28
MTIs	Municipal Ticket Information	Any other Municipal Bylaw offence	2	6	2

For the January Violation Tickets statistics, the total of 1137 includes the following:

- 43 Intersection specific violations
- 43 Seatbelt violations
- 201 Speeding tickets (7 of these were excessive speeding with the vehicle being impounded)
- 9 Impaired related offences.
- 34 Electronic device violations.

South Arm Community Police Station

Stolen Auto Recovery and Lock Out Auto Crime Stats for 2010

Month	Vehicles Viewed For Signs Of Auto Crime Only	Vehicles Scanned Through Stolen Auto Recovery (SAR)	Vehicles Issued A Crime Prevention Notice	Patrol And Admin Hours
January	100	550	100	6
February	756	1,923	756	40
March	1,425	2,281	1,425	42
April	3,109	2,024	1,085	64
May	1,976	2,166	770	44
June	3,662	2,988	674	68
July	3,977	3,360	617	24
August	2,035	1,794	244	37
September	7,347	6,112	1,235	141
October	1,866	4,494	933	82
November	354	2,453	354	32
December	2,730	2,179	551	52
TOTALS	29,337	32,324	8,744	632

Stolen Auto Recovery (SAR) - Volunteers are given a palm pilot which has been downloaded with a complete list of all stolen vehicles in British Columbia.

Crime Prevention Notices - Notices are issued by a community volunteer and left on every car in the parking lot. They are supplied by ICBC and look like a ticket. The notice will have the issuers name, crime prevention tips, location and date written on it as well as a list of questions that have been checked yes or no for example:

- Does the vehicle have an anti-theft device (such as an alarm, immobilizer or steering wheel lock)?
- Are there any Personal belongings in plain view?
- Is the vehicle locked?
- Have all suitable steps been taken to prevent auto crime?

Speed Watch Stats for 2010

Month	# Of Speed Watch Deployments	Total Vehicles Checked	Over 10 Km/h	Visibility And Admin Hours	Number of Warning Letters Issued
January	7	4,578	999	42	100
February	5	1,696	95	32	97
March	9	5,419	447	57	360
April	11	4,201	2,166	40	345
May	14	6,628	1,553	48	467
June	8	3,574	469	24	228
July	10	4,192	1,053	45	460
August	4	2,038	203	16	60
September	4	1,923	115	16	96
October	9	4,667	1,451	38	372
November	6	2,813	1,464	60	124
December	4	2,810	254	34	127
TOTALS	91	43,539	10,269	452	2,836

Speed Watch Deployments – This is how many times that in the month the volunteers went out and did Speed Watch.

Steveston Community Police Station

A presentation was made to seniors at the Steveston Community Center on the Mature Drivers Program. The Mature Drivers Program helps senior drivers review and renew their own skills, habits and knowledge in a peer group environment while getting tips and strategies. The first information session was done in January.

The Crime Free Multi-Housing Program (CFMH Program) is a crime prevention initiative designed specifically to help apartment owners, managers, residents, police and other agencies work together to keep illegal and nuisance activity off rental property. The Richmond RCMP started this program in 2009. It has been used successfully in other cities throughout BC and North America. One new rental building is interested in joining this program.

Program Goals:

Create safer apartment communities.

Help apartment owners and managers effectively screen prospective residents.

Reduce the number of criminal and nuisance related incidents at apartment communities.

This program improves relationships and communication between the police and apartment communities and provides a safer place to live for the residents.

Victim Services

In January of 2011, Victim Witness Services provided support to 34 new clients in addition to an active caseload of over 167 ongoing files. Victim Services aided 16 crime and trauma scenes over this time period. Sudden deaths, robberies, family problems and property crimes dominated calls for service.

Crime Statistics

Crime Stats – see Appendix “A”.

Crime Maps – see Appendix “B”.

Financial Impact

None.

Conclusion

The Officer In Charge, Richmond Detachment has developed a framework and will continue to provide a monthly reporting cycle to the Community Safety Committee.



Lainie Goddard
Manager, RCMP Administration
(L.4767)



JANUARY 2011 STATISTICS

This chart identifies the monthly totals for all founded Criminal Code offences, excluding Traffic Criminal Code. Based on Uniform Crime Reporting (UCR) scoring, there are three categories: (1) Violent Crime, (2) Property Crime, and (3) Other Criminal Code. Within each category, particular offences are highlighted in this chart. In addition, monthly totals for Controlled Drugs and Substances Act (CDSA) offences are included.

Percentage increases of more than 10% are marked in red, while decreases of more than 10% are blue. Please note that percentage changes are inflated in categories with small numbers (e.g.: Sexual Offences).

The arrows in the right-hand column reflect the overall trend (increasing/decreasing/stable) of the past two years. See the following pages for more detailed trend lines.

	CURRENT MONTH	PREVIOUS MONTH		SAME MONTH, PREVIOUS YEAR		YEAR-TO-DATE TOTALS			2-YEAR TREND
	Jan-11	Dec-10	% Change	Jan-10	% Change	2010	2011	% Change	
VIOLENT CRIME (UCR 1000-Series Offences)	113	127	-11.0%	138	-18.1%	138	113	-18.1%	→
Robbery	11	13	-15.4%	3	266.7%	3	11	266.7%	→
Assault	40	46	-13.0%	41	-2.4%	41	40	-2.4%	→
Assault w/ Weapon	12	7	71.4%	15	-20.0%	15	12	-20.0%	→
Sexual Offences	8	5	60.0%	9	-11.1%	9	8	-11.1%	→
PROPERTY CRIME (UCR 2000-Series Offences)	715	659	8.5%	821	-12.9%	821	715	-12.9%	→
Business B&E	23	24	-4.2%	51	-54.9%	51	23	-54.9%	→
Residential B&E	100	70	42.9%	68	47.1%	68	100	47.1%	→
MV Theft	35	40	-12.5%	54	-35.2%	54	35	-35.2%	→
Theft From MV	178	197	-9.6%	280	-36.4%	280	178	-36.4%	→
Theft	129	107	20.6%	123	4.9%	123	129	4.9%	→
Shoplifting	49	71	-31.0%	59	-16.9%	59	49	-16.9%	→
Metal Theft	1	3	-66.7%	9	-88.9%	9	1	-88.9%	→
Fraud	53	46	15.2%	42	26.2%	42	53	26.2%	→
OTHER CRIMINAL CODE (UCR 3000-Series Offences)	140	161	-13.0%	203	-31.0%	203	140	-31.0%	→
Arson - Property	4	4	0.0%	7	-42.9%	7	4	-42.9%	→
TOTAL (UCR 1000- to 3000-Series)	968	947	2.2%	1162	-16.7%	1162	968	-16.7%	→
CDSA - DRUGS (UCR 4000-Series Offences)	69	97	-28.9%	84	-17.9%	84	69	-17.9%	→

Prepared by Richmond RCMP.

Data collected from PRIME on 2011-02-13. Published 2011-02-13.

This data is operational and subject to change. This document is not to be copied, reproduced, used in whole or part or disseminated to any other person or agency without the consent of the originator(s).

Business B&Es

January 1st - January 31st, 2011

APPENDIX 'B'

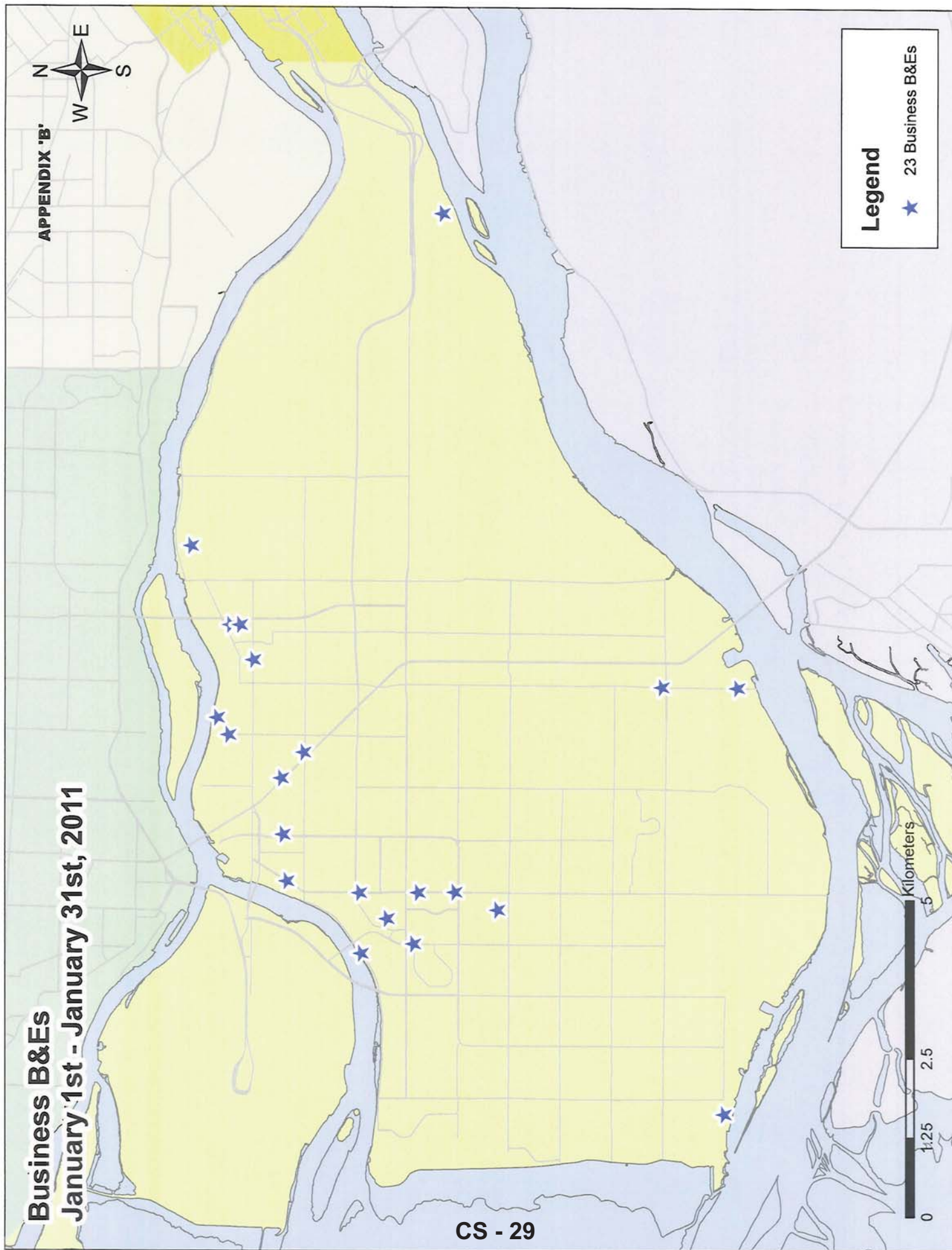


Legend

- ★ 23 Business B&Es

0 1.25 2.5 5 Kilometers

CS - 29



Residential B&Es

January 1st - January 31st, 2011

APPENDIX 'B'

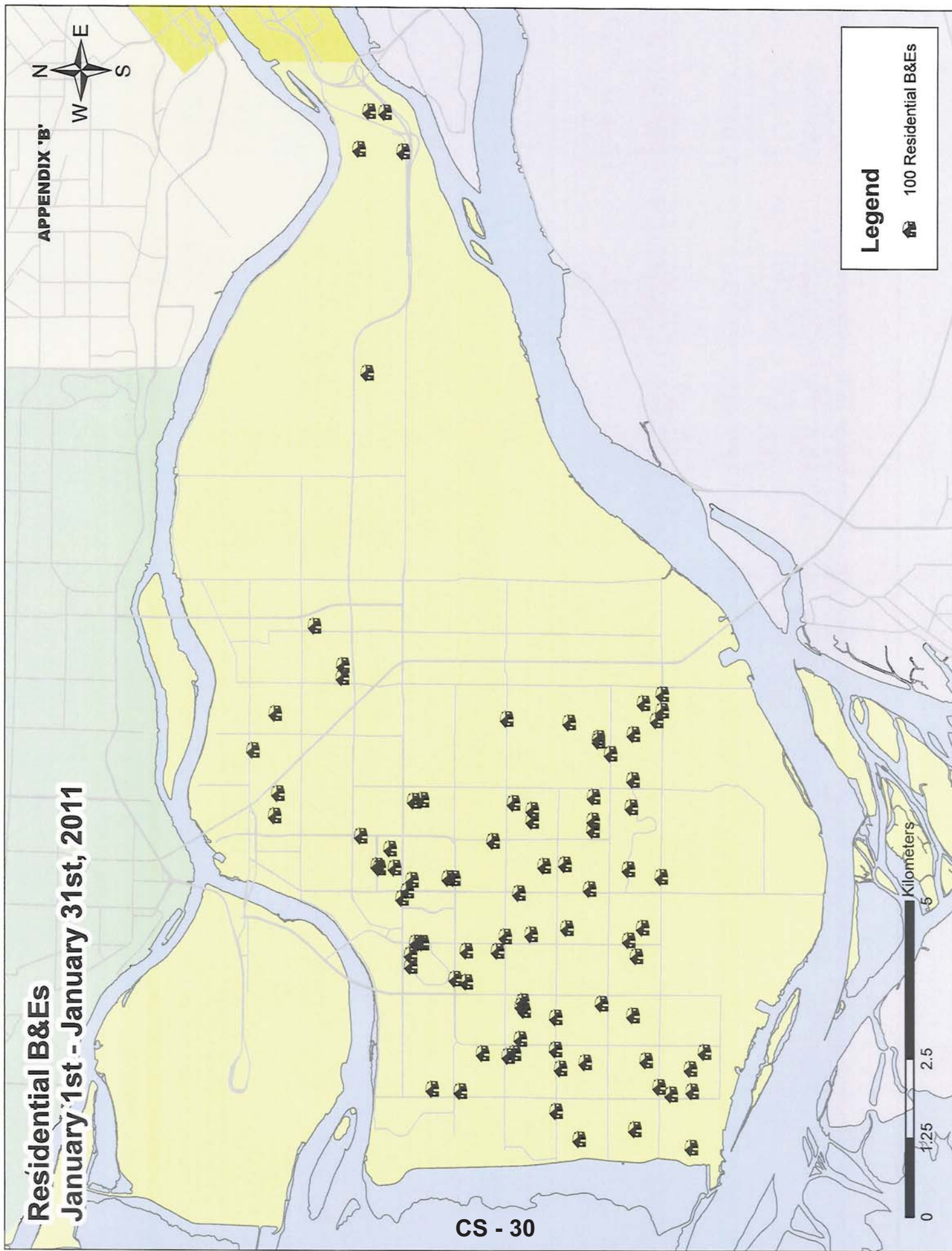


Legend

 100 Residential B&Es

0 1.25 2.5 5 Kilometers

CS - 30



Auto Theft

January 1st - January 31st, 2011

APPENDIX 'B'

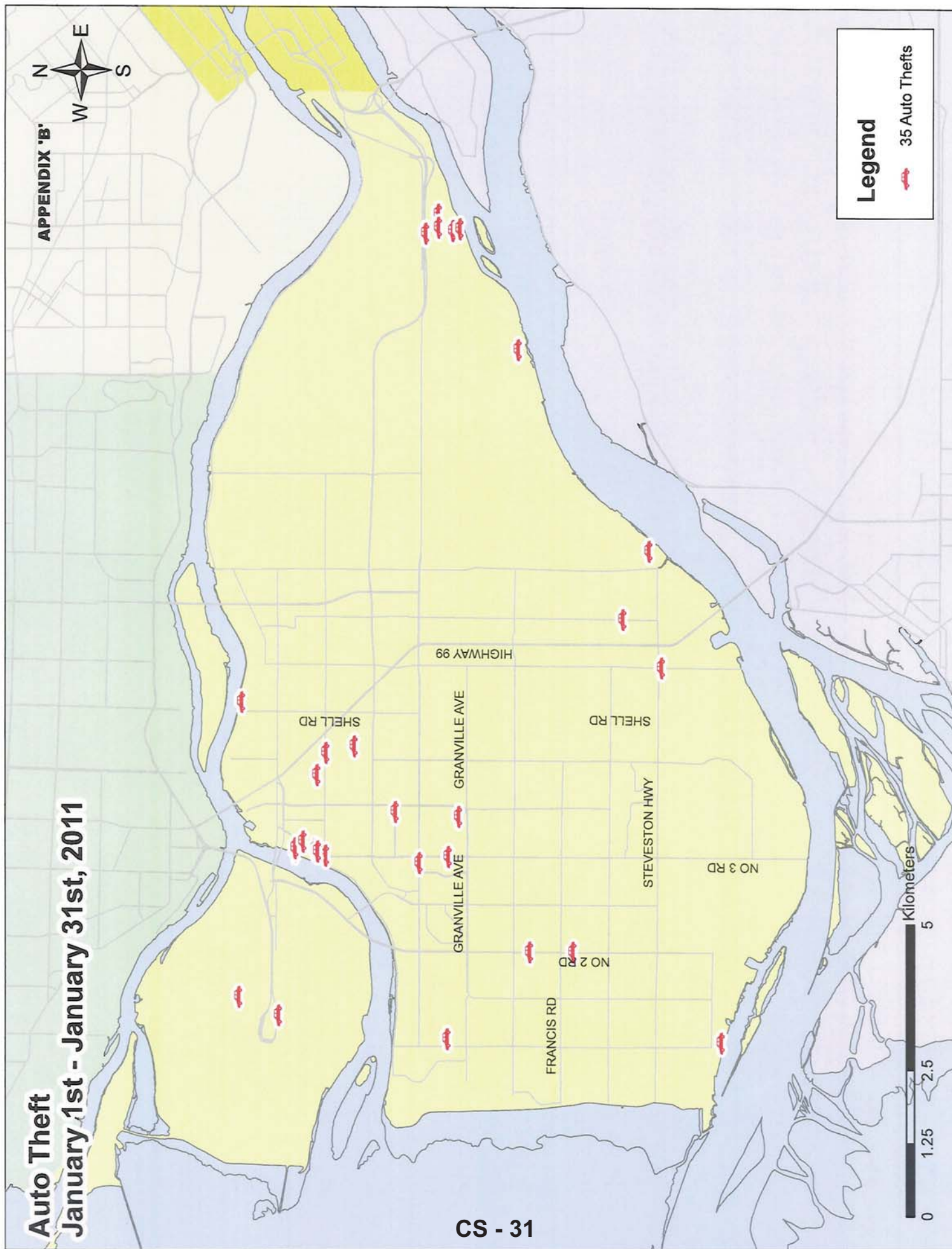


CS - 31

Legend

 35 Auto Thefts

0 1.25 2.5 5 Kilometers



Thefts From Vehicles

January 1st - January 31st, 2011

APPENDIX 'B'



Legend

- 178 Thefts From Vehicles

Kilometers
0 1.25 2.5 5

CS - 32

