



# City of Richmond

## Report to Committee

**To:** Community Safety Committee

**From:** Rendall Nasset  
Officer In Charge,  
Richmond RCMP Detachment

**Date:** May 25, 2011

**File:** 09-5000-01/2010-Vol  
01  
(11.38)

**Re:** RCMP's Monthly Report – April 2011 Activities

### Staff Recommendation

That the OIC's report entitled "RCMP's Monthly Report – April 2011 Activities" dated May 25, 2011, be received for information.

(Rendall Nasset) Superintendent  
Officer in Charge, Richmond RCMP Detachment  
(604-278-1212)

<b>FOR ORIGINATING DEPARTMENT USE ONLY</b>		
<b>CONCURRENCE OF GENERAL MANAGER</b>		
<b>REVIEWED BY TAG</b>	YES <input checked="" type="checkbox"/>	NO <input type="checkbox"/>
<b>REVIEWED BY CAO</b>	YES <input checked="" type="checkbox"/>	NO <input type="checkbox"/>

## **Origin**

The Officer In Charge of the Richmond RCMP Detachment acknowledges and supports that the City of Richmond should be kept informed on matters pertaining to policing in the community and has developed a framework to provide regular reporting cycles.

## **Analysis**

Below is the RCMP's Monthly Report – April 2011 Activities.

### **Noteworthy Files:**

#### **Street Racers Caught**

On February 18<sup>th</sup> at approximately 5:30 p.m. a Richmond RCMP officer was conducting patrols in the area of Bridgeport and No 3 Road when he observed a white Mercedes pass him from behind at a high rate of speed. The speed was estimated in excess of 100 km/h. The Mercedes made no attempt to stop or slow down after passing a marked police car. Moments later the officer was passed by a red Ferrari being driven as fast as the Mercedes. The dangerous driving continued as both vehicles performed lane changes without slowing down or signalling, cutting off all other traffic on the road. As the officer activated the emergency equipment on his police car in order to pull over the speeding vehicles, another police car operated by a member of the Integrated Road Safety Unit who was in the area became involved as well. Together the officers pulled over the vehicles at which time they were impounded for seven days. Both drivers were issued violation tickets for Driving Without Due Care and Attention and one driver also received a violation ticket for Failing to Display an "N" Sign. Once apprehended neither driver seemed to be phased by the fact they were ticketed, or the fact that their vehicles had been impounded.

#### **Charges Recommended for Hateful Graffiti**

Richmond RCMP is recommending that charges be laid against two Richmond youths believed to be responsible for graffiti incidents. On March 5<sup>th</sup> the Detachment received three reports that racist graffiti was found in different locations throughout the city. The graffiti was located on a pump station at the west end of Blundell Road, on a travel trailer in the 8600 block of Seafair Drive and on Gilmore Elementary School. In all three instances the graffiti consisted of racial slurs, swastikas and white supremacy markings. The BC Hate Crimes Section was contacted and assisted with the investigation. Charges of Mischief and Wilfully Promoting Hatred are being recommended for two Richmond youths, a 15-year-old male and a 16-year-old male. A court date has not been set, as charges have not yet been approved. The identities of the accused are protected under the Youth Criminal Justice Act and will not be released if charges are approved.

**Auxiliary Constables**

As of the end of April, Richmond had a strength of 40 Auxiliary Constables and recorded 2,280 volunteer hours as indicated in the following table:

<b>Month</b>	<b>Community Policing</b>	<b>Training/Admin</b>	<b>Ride-Alongs</b>	<b>Total</b>
<b>January</b>	76	290	204	570
<b>February</b>	267	259	120	646
<b>March</b>	116	159	111	386
<b>April</b>	205	261	213	679
<b>Total</b>	<b>664</b>	<b>969</b>	<b>648</b>	<b>2281</b>

*Numbers will fluctuate due to report of Auxiliary Constables.*

**Summary of Auxiliary Constable Duties for March 2011:**

In April the Auxiliary Constables concentrated on community policing programs, such as Hamilton and Steveston Foot Patrols, Home Security Checks, Speed Watch, and SAFE Schools, in addition to assisting regular members with General Duty, Traffic, and Liquor and City Bylaw Enforcement duties. The coming spring and summer months will see an increase in community events that the Auxiliary Constables have committed to.

**Road Safety Unit****Richmond Detachment Traffic Statistics**

<b>Name</b>	<b>Act</b>	<b>Example</b>	<b>Feb</b>	<b>Mar</b>	<b>Apr</b>
Violation Tickets	Provincial Act Offences	Speeding	1208	914	1300
Notice & Orders	Equipment Violations	Broken Tail-light	585	578	572
Driving Suspension	Motor Vehicle Act	24 hour driving prohibition for alcohol or drugs	18	41	20
Parking Offences	Municipal Bylaw	On or off the street Municipal parking offences	30	9	13
MTI's	Municipal Ticket Information	Any other Municipal Bylaw offence	3	8	2

For the April Violation Tickets statistics, the total of 1300 includes, although not limited to the following:

- 4 – 90 day Immediate Roadside Prohibition's
- 16 – Excessive speeding violations that includes vehicle impound of 3 days.
- 53 – Cell phone violations.
- 50 – Seatbelt violations.

### South Arm Community Police Station

#### **Richmond Detachment Stolen Auto Recovery and Lock out Auto Crime Statistics for 2011**

<b>Month</b>	<b>Vehicles Viewed For Signs Of Auto Crime Only</b>	<b>Vehicles Scanned Through Stolen Auto Recovery (SAR)</b>	<b>Vehicles Issued A Crime Prevention Notice</b>	<b>Patrol And Admin Hours</b>
<b>January</b>	4,898	4,368	530	96
<b>February</b>	2,265	1,657	608	60
<b>March</b>	3,261	1,630	1,082	80
<b>April</b>	3,356	2,529	828	54
<b>Total</b>	<b>13,780</b>	<b>10,184</b>	<b>3,048</b>	<b>290</b>

#### Stolen Auto Recovery (SAR)

Volunteers are given a palm pilot, which has been downloaded with a complete list of all stolen vehicles in British Columbia. During patrols by volunteers vehicle plates are compared to the list on the palm pilot and when there is a match the volunteer calls the Detachment to report the recovery. At no time do the volunteers become involved with either the vehicle or its passengers. Regular members are called to investigate.

#### Crime Prevention Notices

Notices are issued by a community volunteer and left on every car in the parking lot. They are supplied by ICBC and look like a ticket. The notice will have the issuer's name, crime prevention tips, location and date written on it as well as a list of questions that have been checked yes or no for example:

- Does the vehicle have an anti-theft device (such as an alarm, immobilizer or steering wheel lock)?
- Are there any Personal belongings in plain view?
- Is the vehicle locked?
- Have all suitable steps been taken to prevent auto crime?

### Richmond Detachment Speed Watch Statistics for 2011

Month	# Of Speed Watch Deployments	Total Vehicles Checked	Over 10 Km/h	Visibility And Admin Hours	Number of Warning Letters Issued
January	6	2,728	375	54	204
February	13	6,281	950	76	390
March	13	6,207	1,098	80	311
April	12	6,321	1,060	92	347
<b>TOTALS</b>	44	21,537	3,483	302	1,252

### Richmond Detachment Distracted Drivers Statistics for 2011

Month	Number of Letters Sent
January	Started Feb. 1st
February	50
March	73
April	64
<b>TOTAL</b>	187

#### Distracted Drivers

Volunteers of the South Arm Crime Prevention Unit position at various locations in Richmond and observe drivers that are driving while distracted. This may include talking, using electronic devices, reading a newspaper, putting on makeup and dogs sitting on laps. The volunteer then writes the date, time, locations and what the driver is doing. A letter is then sent to the owner of the vehicle bearing the license plate that was recorded by the volunteer. The letter, which serves as a warning/information, indicates the date, time and location of the distraction with a list of possible fines had there been a violation ticket issued by a police officer.

#### Victim Services

In April of 2011, Victim Witness Services provided support to 38 new clients in addition to an active caseload of over 161 ongoing files. Victim Services aided 21 crime and trauma scenes over this time period. Sudden deaths and family problems dominated calls for service. Of significant note, Victim Services responded to a high number of sudden death files this month. There were 10 sudden death calls, which was due to unforeseen medical issues resulting in families and friends being quite shocked and emotional. Victim Services supported a number of witnesses in the immediate aftermath.

#### Crime Statistics

Crime Stats – see Appendix “A”.

Crime Maps – see Appendix “B”

## **Financial Impact**

There is no financial impact associated with this report.

## **Conclusion**

The Officer in Charge, Richmond Detachment has developed a framework and will continue to provide a monthly reporting cycle to the Community Safety Committee.



Lainie Goddard  
Manager, RCMP Administration  
(L.4767)



## APRIL 2011 STATISTICS

This chart identifies the monthly totals for all founded Criminal Code offences, excluding Traffic Criminal Code. Based on Uniform Crime Reporting (UCR) scoring, there are three categories: (1) Violent Crime, (2) Property Crime, and (3) Other Criminal Code. Within each category, particular offences are highlighted in this chart. In addition, monthly totals for Controlled Drugs and Substances Act (CDSA) offences are included.

The Average Range data is based on activity in a single month over the past 5 years. The only exception is Metal Theft, which only has 4 years of available data. If the current monthly total for an offence is above average, it will be noted in **red**, while below-average numbers will be noted in **blue**.

Year-to-Date percentage increases of more than 10% are marked in **red**, while decreases of more than 10% are **blue**. Please note that percentage changes are inflated in categories with small numbers (e.g.: Sexual Offences).

	CURRENT MONTH	5-YR AVERAGE RANGE	YEAR-TO-DATE TOTALS		
	Apr-11	April	2010 YTD	2011 YTD	% Change
<b>VIOLENT CRIME</b> (UCR 1000-Series Offences)	<b>116</b>	<b>119-163</b>	<b>560</b>	<b>482</b>	<b>-13.9%</b>
<i>Robbery</i>	8	6-11	30	40	<b>33.3%</b>
<i>Assault</i>	43	35-63	189	166	<b>-12.2%</b>
<i>Assault w/ Weapon</i>	8	10-15	50	52	<b>4.0%</b>
<i>Sexual Offences</i>	6	2-8	33	23	<b>-30.3%</b>
<b>PROPERTY CRIME</b> (UCR 2000-Series Offences)	<b>619</b>	<b>653-781</b>	<b>2875</b>	<b>2597</b>	<b>-9.7%</b>
<i>Business B&amp;E</i>	29	39-49	179	132	<b>-26.3%</b>
<i>Residential B&amp;E</i>	46	32-57	201	274	<b>36.3%</b>
<i>MV Theft</i>	36	27-53	164	144	<b>-12.2%</b>
<i>Theft From MV</i>	173	167-211	861	621	<b>-27.9%</b>
<i>Theft</i>	87	85-149	438	410	<b>-6.4%</b>
<i>Shoplifting</i>	57	43-59	256	257	<b>0.4%</b>
<i>Metal Theft</i>	4	3-16*	22	13	<b>-40.9%</b>
<i>Fraud</i>	57	35-61	205	222	<b>8.3%</b>
<b>OTHER CRIMINAL CODE</b> (UCR 3000-Series Offences)	<b>177</b>	<b>152-213</b>	<b>793</b>	<b>609</b>	<b>-23.2%</b>
<i>Arson - Property</i>	2	5-9	30	19	<b>-36.7%</b>
<b>SUBTOTAL</b> (UCR 1000- to 3000-Series)	<b>912</b>	<b>1006-1075</b>	<b>4228</b>	<b>3688</b>	<b>-12.8%</b>
<b>DRUGS</b> (UCR 4000-Series Offences)	<b>94</b>	<b>58-98</b>	<b>345</b>	<b>313</b>	<b>-9.3%</b>

\* Metal Theft only has 4 years of available data.

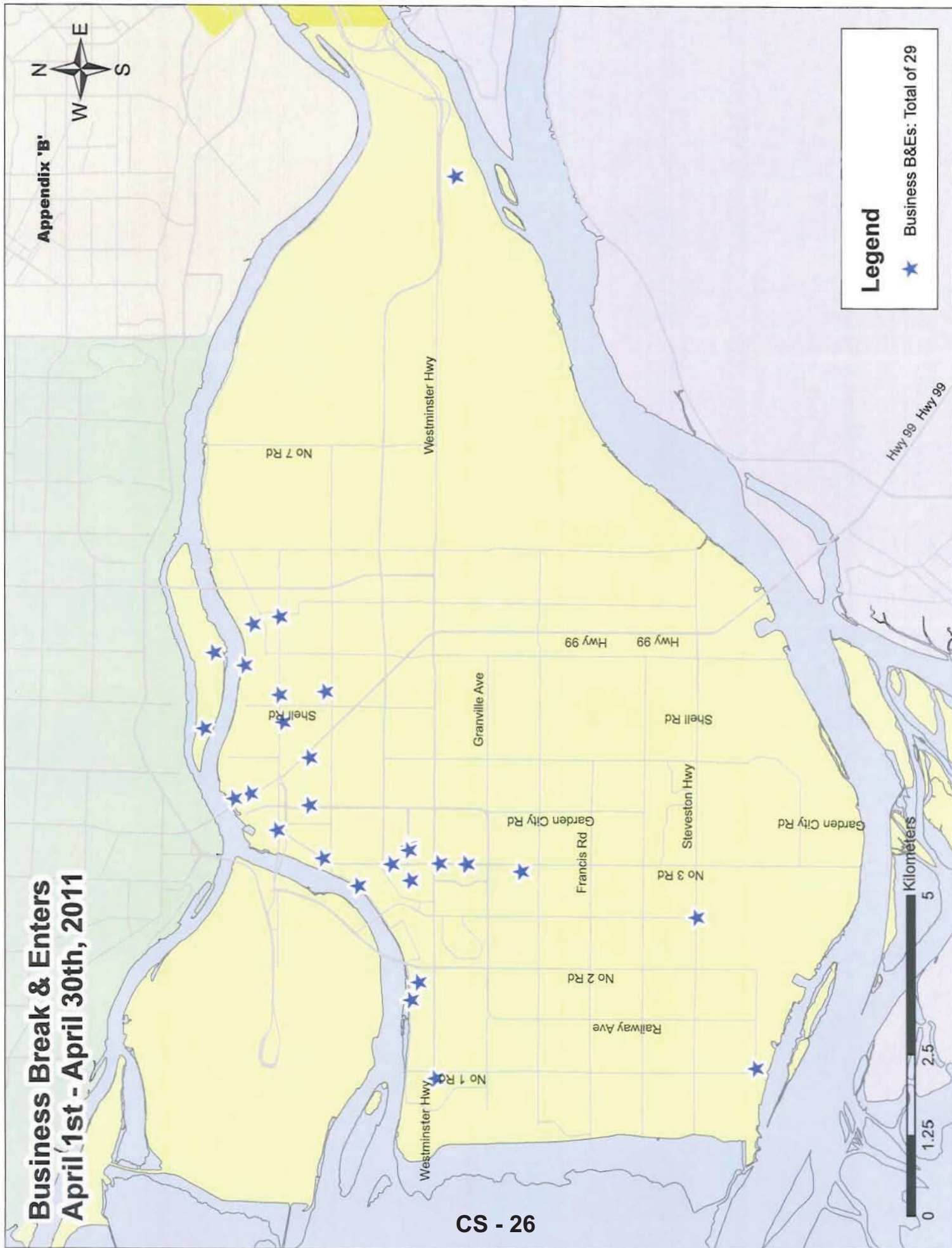
Prepared by Richmond RCMP.

Data collected from PRIME on 2011-05-12. Published 2011-05-19.

This data is operational and subject to change. This document is not to be copied, reproduced, used in whole or part or disseminated to any other person or agency without the consent of the originator(s).

# Business Break & Enters April 1st - April 30th, 2011

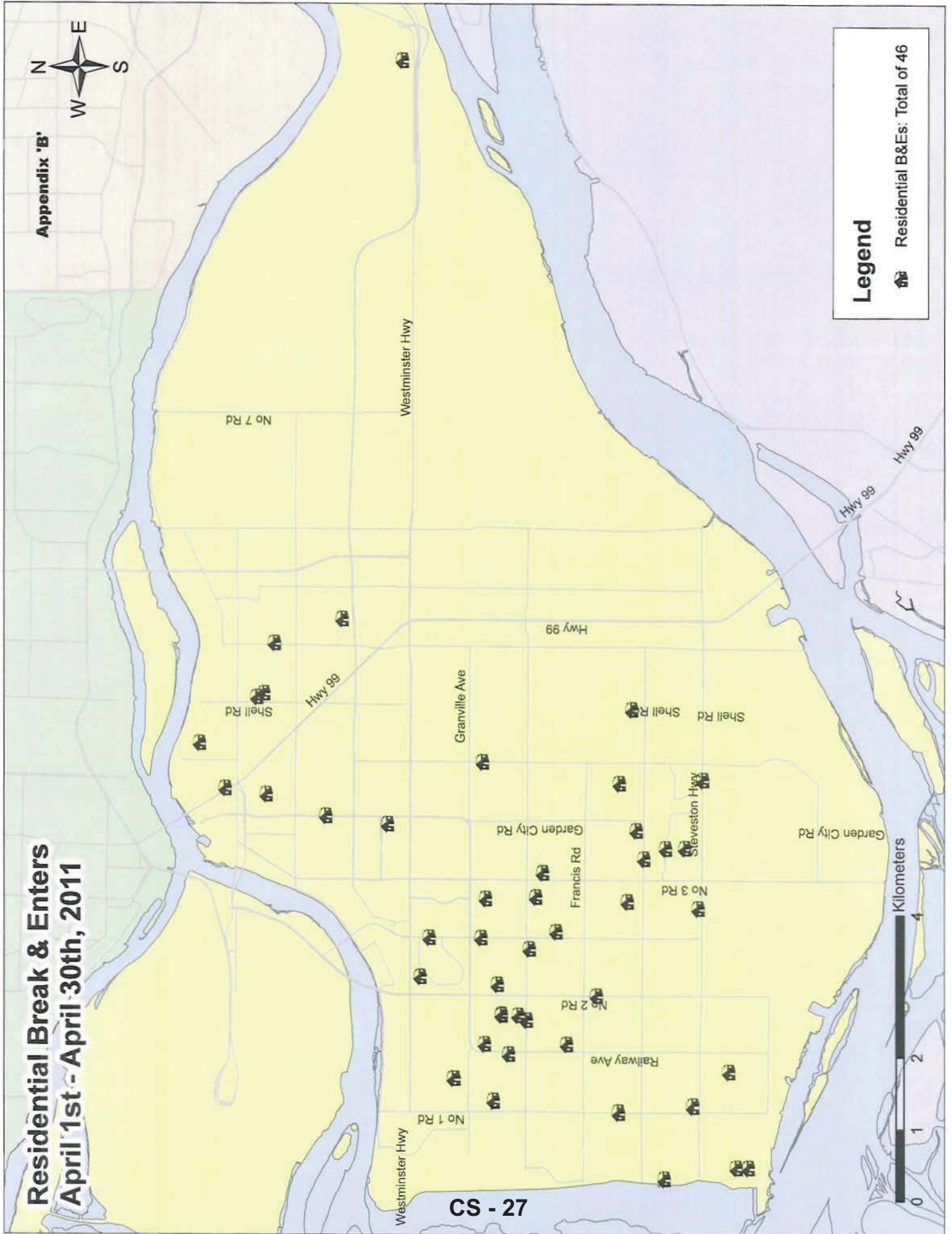
Appendix 'B'






# Residential Break & Enters April 1st - April 30th, 2011

Appendix 'B'



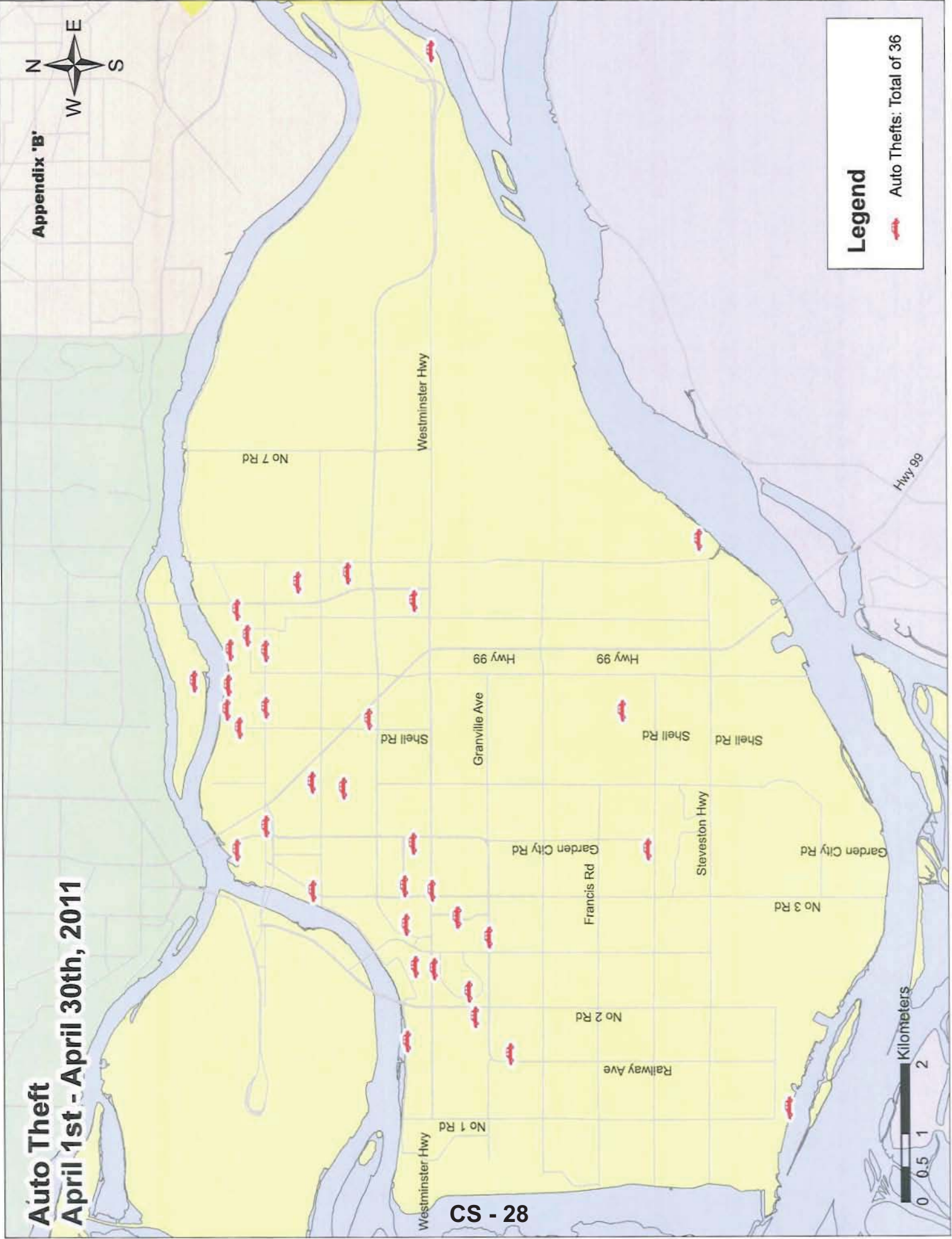
## Legend

 Residential B&Es: Total of 46

CS - 27

# Auto Theft April 1st - April 30th, 2011

Appendix 'B'



CS - 28

## Legend

 Auto Thefts: Total of 36



# Thefts From Vehicles April 1st - April 30th, 2011

Appendix 'B'



Vancouver

Burnaby

Delta

No 7 Rd

Westminster Hwy

Hwy 99 Hwy 99

Shell Rd

Granville Ave

Hwy 99

Hwy 99

Shell Rd

Francis Rd

Steveston Hwy

Garden City Rd

Garden City Rd

No 3 Rd

No 2 Rd

Railway Ave

No 1 Rd

Westminster Hwy

Kilometers



## Legend

- Thefts From Vehicles: Total of 173