



City of Richmond

Report to Committee

To: Community Safety Committee

Date: March 11, 2011

From: Rendall Nessel
Officer In Charge,
Richmond RCMP Detachment

File: 09-5000-01/2010-Vol
01
(11.27)

Re: RCMP's Monthly Report –February 2011 Activities

Staff Recommendation

That the OIC's report entitled "RCMP's Monthly Report – February 2011 Activities" dated March 11, 2011, be received for information.

Rendall Nessel
Officer In Charge, Richmond RCMP Detachment
(604-278-1212)

FOR ORIGINATING DEPARTMENT USE ONLY		
CONCURRENCE OF GENERAL MANAGER		
REVIEWED BY TAG	YES <input checked="" type="checkbox"/>	NO <input type="checkbox"/>
REVIEWED BY CAO	YES <input checked="" type="checkbox"/>	NO <input type="checkbox"/>

Origin

The Officer In Charge of the Richmond RCMP Detachment acknowledges and supports that the City of Richmond should be kept informed on matters pertaining to policing in the community and has developed a framework to provide regular reporting cycles.

Analysis

Below is the RCMP's Monthly Report – February 2011 Activities.

Noteworthy Files:

Marihuana Grow Operations

The Detachment's Marihuana Enforcement Team has recently noticed a trend when it comes to marihuana grow operations. The trend that is occurring is a reluctance by the general public to telephone the police when there might be a marihuana grow operation in a neighbouring residence.

Marihuana grow operations appear in homes or outbuildings in residential, rural or commercial/industrial areas. Larger homes or buildings are usually selected as they will support a larger growing capacity. These buildings usually appear to be maintained, however the interiors tell a different story. The interior of the building may have received significant structural, electrical and heating system modifications not in accordance with applicable building, natural gas or electrical codes. Modifications usually include an overloaded existing electrical system or a bypass circuit designed to avoid paying for the electricity required to power high intensity light bulbs and fans. Grow operations pose significant public safety concerns to the neighbourhoods and communities in which they exist, not only for the future owners or occupants of the premises, but also for other residents in the area.

Marihuana grow operations are criminal enterprises that are very often linked to organized crime. Grow ops are often the targets of home invasions which bring violence and increased crime into the neighbourhood. Hazardous fumes may emanate from grow ops as a result of modifications to venting, carbon dioxide generators, airborne chemicals, black mould and fungus. In addition improper wiring on overloaded electrical systems, exposed wiring and electrical equipment in the immediate area of water used to feed the plants pose a huge risk of fire and electrocution.

The following is a list of indicators for marihuana grow operations. Not all indicators may be present however, only one indicator is needed before a call should be placed to the police.:

- Rarely does anyone appear to be at home.
- Residents avoid contact with neighbours.
- Visitors come and go at odd hours.
- Windows are closed and covered to conceal activities inside.
- Security cameras are present.

- Security bars on windows and doors can be seen.
- Condensation may be present on window panes.
- Sounds of humming from electrical equipment can be heard.
- A strange skunk-like odour is present.
- A quickly spinning hydro meter wheel is seen.
- Warning signs around the outside of the building such as “Beware of Dog”.

The Detachment has sent out a news release to encourage the community to report unusual activities or tell tale signs of a marihuana grow operation. It is not necessary for the community to be certain that a grow operation is next door, all that is necessary is a suspicion for investigators to respond.

Suspects Use Stolen Credit Card

On January 8th the Detachment received a report that a wallet had been stolen from a locker while the owner was at a recreation facility. By the time the owner of the wallet realized what had happened, his credit card was used by the thieves at local businesses. The card was used at Staples on No. 3 Road and fortunately, video surveillance was obtained as the suspects entered the store.

The first suspect is described as an Asian male, 5'6" tall, 19 years old, slim build with short black spikey hair and glasses. He was wearing a black t-shirt and brown jacket. The second suspect is described as an Asian female, 5'6" tall, 20 years old, slim build with long black hair, wearing a fur lined brown jacket, white shirt, black tights and white runners. The third suspect is described as an Asian male, 5'7" tall, 19-21 years old, slim build, short black hair wearing a black jacket and black pants.

The Detachment has sent out a news release to the community to telephone the police if the suspects can be identified.

The 36th Annual 2011 Western Canadian RCMP Hockey Championships

The 36th Annual 2011 Western Canadian RCMP Hockey Championships were held March 3 to 5 at the Richmond Ice Center. Every year this tournament shifts venues within the four western provinces and this year Richmond was fortunate enough to hold the tournament. This was the second time the tournament was being hosted in Richmond, the last time being 2006.

This tournament represented the culmination of the hockey season for over 150 participants who are either retired or currently serving members of the RCMP. There were three events in the tournament, those being the under 35 year of age category, over 35 years of age category and over 45 years of age category, with a total of 10 teams participating throughout. E Division (BC) won all three divisions. The tournament was a great success and the RCMP will be making a donation to Canuck Place. (Total amount of donation not available at this time.)

Auxiliary Constables

As of the end of February, Richmond had a strength of 42 Auxiliary Constables, including 3 on leave of absence. To date in 2011, Auxiliary Constables recorded 1,186 volunteer hours, as indicated in the attached table.

Month	Community Policing	Training/Admin	Ride-Along	Total
January 2011	76	290	204	570
February 2011	267	259	90	616
Total	343	549	294	1186

As well as a large turn-out for Richmond Winter Fest, Auxiliary Constables have concentrated on community policing programs, such as Business Watch, Home Security Checks, Pedestrian Safety Education, SAFE Schools, Safety Talks, Speed Watch, and YVR Patrols.

Road Safety Unit

Richmond Detachment Traffic Statistics

Name	Act	Example	Dec	Jan	Feb
Violation Tickets	Provincial Act Offences	Speeding	1042	1137	1208
Notice & Orders	Equipment Violations	Broken Tail-light	584	630	585
Driving Suspension	Motor Vehicle Act	24 hour driving prohibition for alcohol or drugs	22	38	18
Parking Offences	Municipal Bylaw	On or off the street Municipal parking offences	29	28	30
MTIs	Municipal Ticket Information	Any other Municipal Bylaw offence	6	2	3

For the February Violation Tickets statistics, the total of 1208 includes, although not limited to the following:

- 92 Violation Tickets for cell phones.
- 75 Violation Tickets for other distracted driving offences.

Also included is the Automatic Licence Plate Recognition (ALPR) operation which was deployed for 12 hours over 5 days, includes the following:

- 8000 plates read.
- 20 charges resulted at 50 additional charges laid for various offences that were observed for example: cell phones, seat belts, and equipment. Of the 20 ALPR charges most were no drivers licence, expired drivers licence and no insurance. Three prohibited drivers and one chronic fraud offender was apprehended.

South Arm Community Police Station**Stolen Auto Recovery and Lock Out Auto Crime Stats for 2011**

Month	Vehicles Viewed For Signs Of Auto Crime Only	Vehicles Scanned Through Stolen Auto Recovery (SAR)	Vehicles Issued A Crime Prevention Notice	Patrol And Admin Hours
January	4,898	4,368	530	96
February	2,265	1,657	608	60
TOTALS	7,163	6,025	1,138	156

Stolen Auto Recovery (SAR) - Volunteers are given a palm pilot which has been downloaded with a complete list of all stolen vehicles in British Columbia.

Crime Prevention Notices - Notices are issued by a community volunteer and left on every car in the parking lot. They are supplied by ICBC and look like a ticket. The notice will have the issuers name, crime prevention tips, location and date written on it as well as a list of questions that have been checked yes or no for example:

- Does the vehicle have an anti-theft device (such as an alarm, immobilizer or steering wheel lock)?
- Are there any Personal belongings in plain view?
- Is the vehicle locked?
- Have all suitable steps been taken to prevent auto crime?

Speed Watch Stats for 2011

Month	# Of Speed Watch Deployments	Total Vehicles Checked	Over 10 Km/h	Visibility And Admin Hours	Number of Warning Letters Issued
January	6	2,728	375	54	204
February	13	6,281	950	76	390
TOTALS	29	9,009	1,325	130	594

Victim Services

In February of 2011, Victim Witness Services provided support to 40 new clients in addition to an active caseload of over 168 ongoing files. Victim Services aided 21 crime and trauma scenes over this time period. Sudden deaths, suicides and family problems dominated calls for service.

Crime Statistics

Crime Stats – see Appendix “A”.
Crime Maps – see Appendix “B”.

Financial Impact

None.

Conclusion

The Officer In Charge, Richmond Detachment has developed a framework and will continue to provide a monthly reporting cycle to the Community Safety Committee.

A handwritten signature in black ink, appearing to read 'Lainie Goddard', with a large, stylized flourish at the end.

Lainie Goddard
Manager, RCMP Administration
(L.4767)



FEBRUARY 2011 STATISTICS

This chart identifies the monthly totals for all founded Criminal Code offences, excluding Traffic Criminal Code. Based on Uniform Crime Reporting (UCR) scoring, there are three categories: (1) Violent Crime, (2) Property Crime, and (3) Other Criminal Code. Within each category, particular offences are highlighted in this chart. In addition, monthly totals for Controlled Drugs and Substances Act (CDSA) offences are included.

The Average Range data is based on activity in a single month over the past 5 years. The only exception is Metal Theft, which only has 4 years of available data. If the current monthly total for an offence is above average, it will be noted in **red**, while below-average numbers will be noted in **blue**.

Year-to-Date percentage increases of more than 10% are marked in **red**, while decreases of more than 10% are **blue**. Please note that percentage changes are inflated in categories with small numbers (e.g.: Sexual Offences).

	CURRENT MONTH	AVERAGE RANGE	YEAR-TO-DATE TOTALS		
	Feb-11	February	2010 YTD	2011 YTD	% Change
VIOLENT CRIME (UCR 1000-Series Offences)	127	115-147	281	240	-14.6%
<i>Robbery</i>	5	6-14	14	16	14.3%
<i>Assault</i>	41	41-54	95	81	-14.7%
<i>Assault w/ Weapon</i>	14	9-15	32	26	-18.8%
<i>Sexual Offences</i>	6	4-6	14	14	0.0%
PROPERTY CRIME (UCR 2000-Series Offences)	552	603-797	1499	1267	-15.5%
<i>Business B&E</i>	37	33-57	94	60	-36.2%
<i>Residential B&E</i>	53	41-55	118	153	29.7%
<i>MV Theft</i>	31	28-78	101	66	-34.7%
<i>Theft From MV</i>	113	134-253	447	291	-34.9%
<i>Theft</i>	95	97-135	238	224	-5.9%
<i>Shoplifting</i>	65	40-76	133	114	-14.3%
<i>Metal Theft</i>	3	3-17	15	4	-73.3%
<i>Fraud</i>	42	33-55	101	95	-5.9%
OTHER CRIMINAL CODE (UCR 3000-Series Offences)	131	149-184	387	271	-30.0%
<i>Arson - Property</i>	9	4-12	12	13	8.3%
SUBTOTAL (UCR 1000- to 3000-Series)	810	900-1095	2167	1778	-18.0%
DRUGS (UCR 4000-Series Offences)	77	71-97	189	146	-22.8%

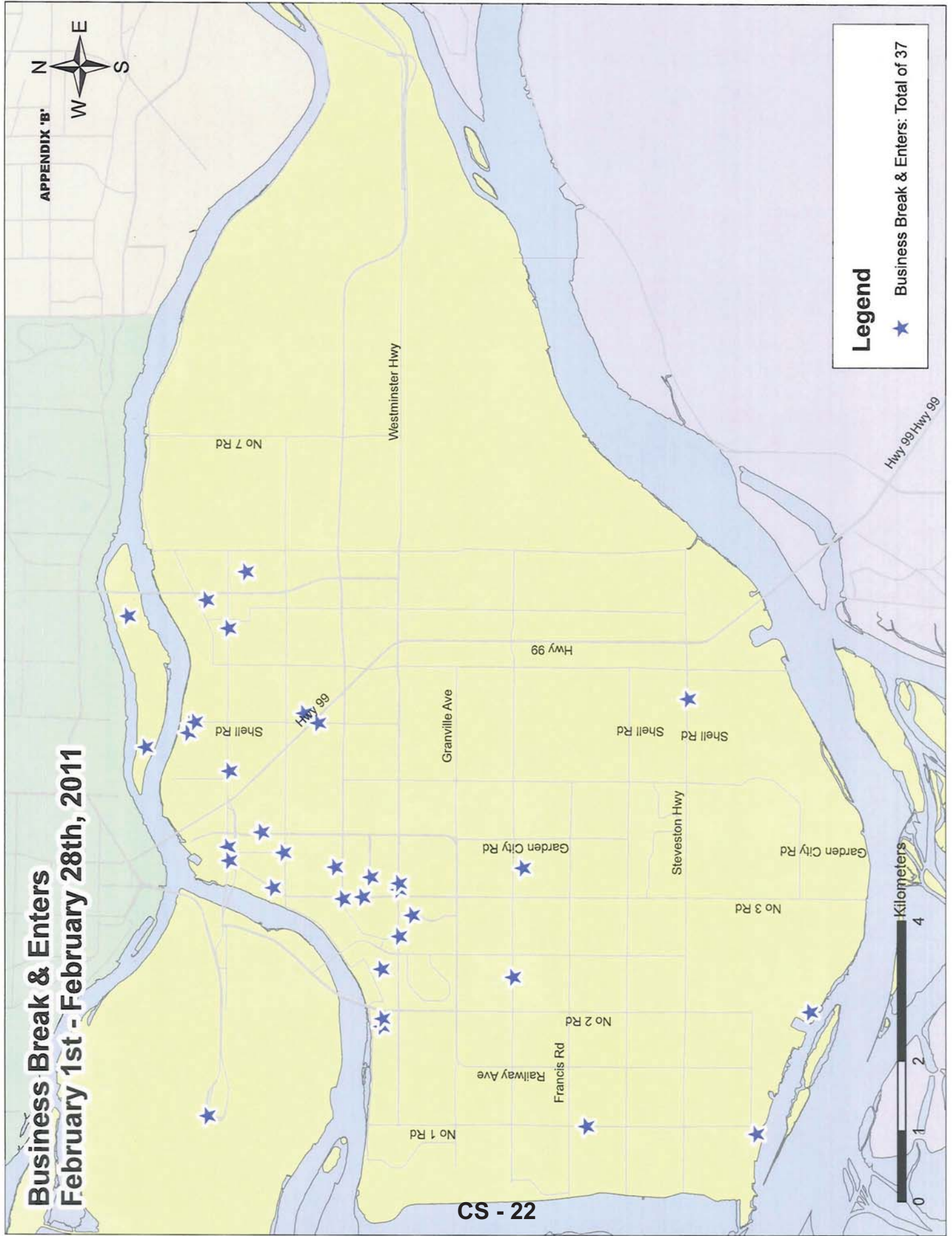
Prepared by Richmond RCMP.

Data collected from PRIME on 2011-03-14. Published 2011-03-21.

This data is operational and subject to change. This document is not to be copied, reproduced, used in whole or part or disseminated to any other person or agency without the consent of the originator(s).

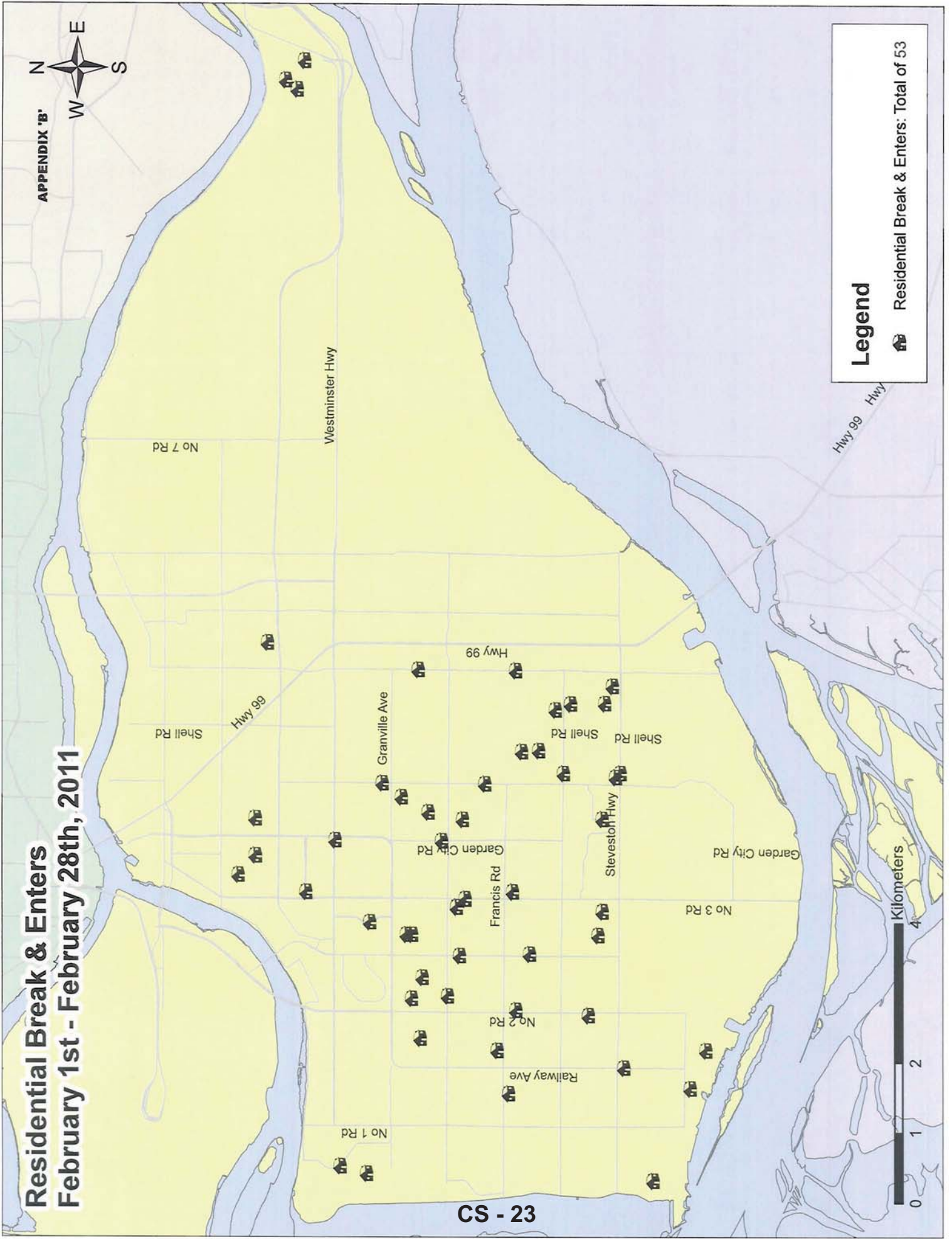
Business Break & Enters February 1st - February 28th, 2011

APPENDIX 'B'



Residential Break & Enters February 1st - February 28th, 2011

APPENDIX 'B'



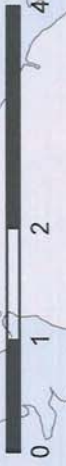
CS - 23

Legend



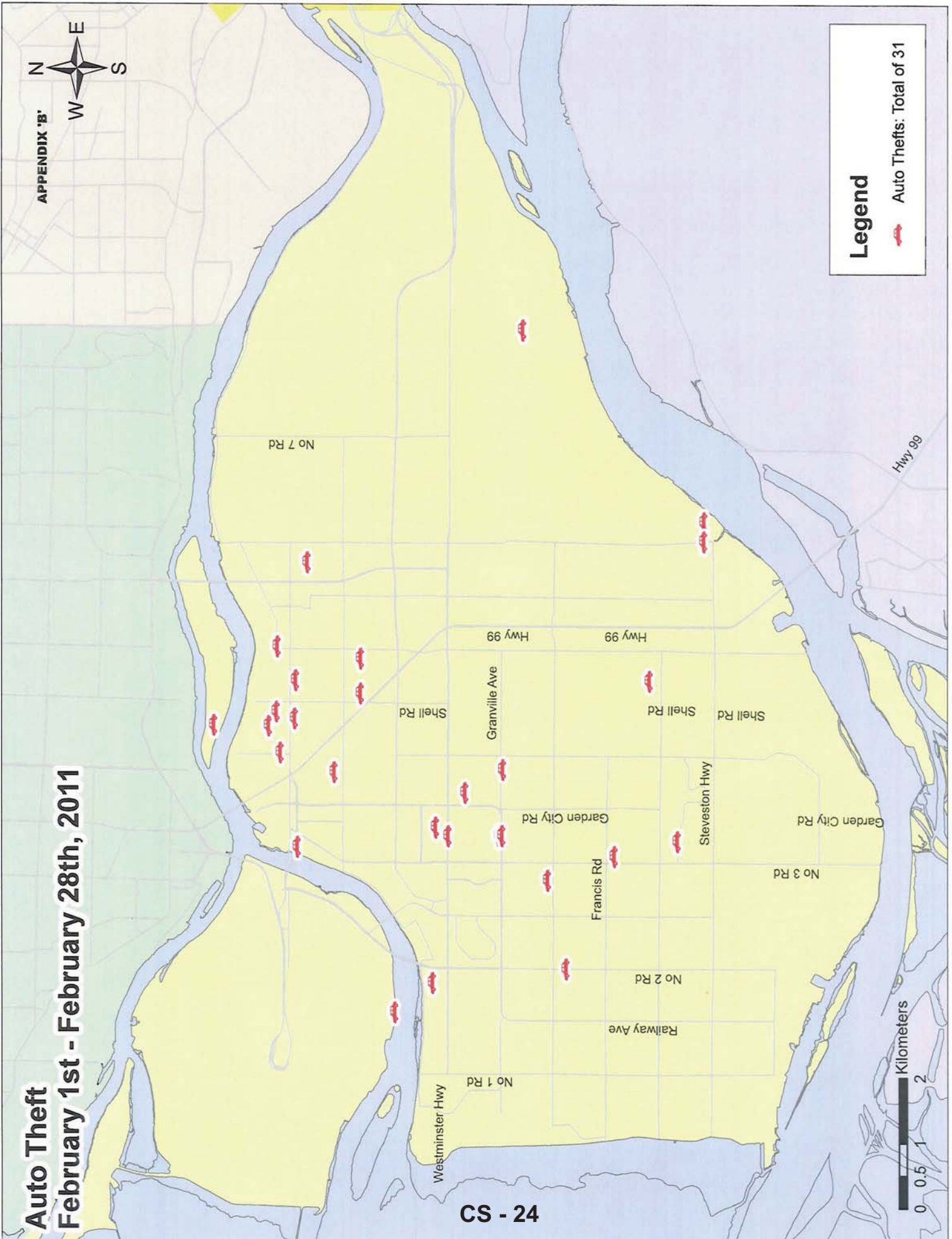
Residential Break & Enters: Total of 53

Kilometers



Auto Theft February 1st - February 28th, 2011

APPENDIX 'B'



CS - 24

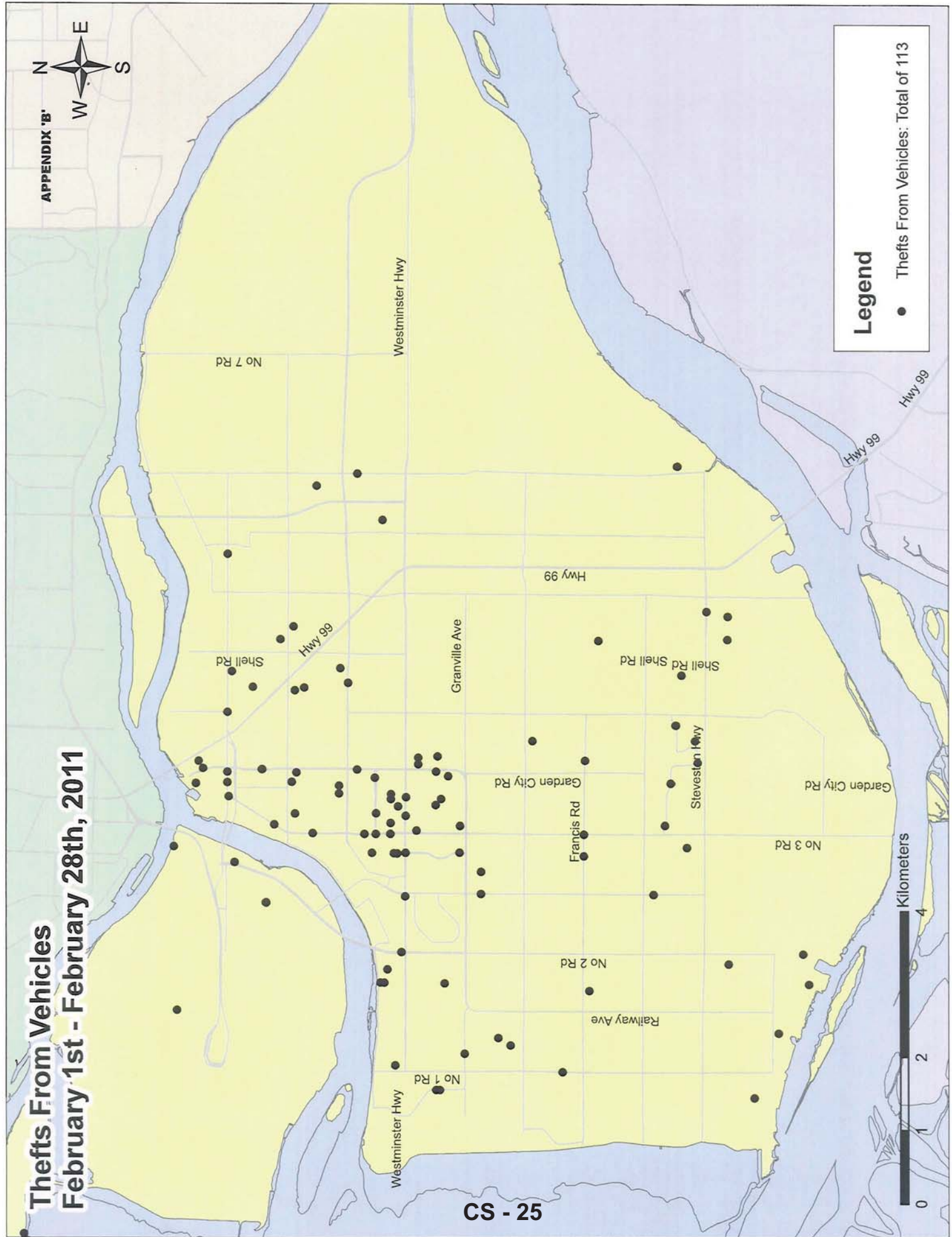
Legend

 Auto Thefts: Total of 31

 Kilometers
0 0.5 1 2

Thefts From Vehicles February 1st - February 28th, 2011

APPENDIX 'B'



CS - 25

Legend

- Thefts From Vehicles: Total of 113

0 1 2 4 Kilometers