



City of Richmond

Report to Committee

To: Parks, Recreation and Cultural Services
Committee

Date: February 13, 2012

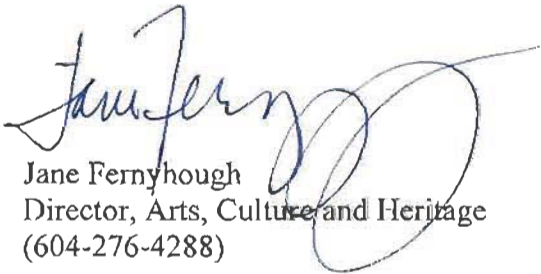
From: Jane Fernyhough
Director, Arts, Culture and Heritage

File: 11-7000-09-01/2012-
Vol 01

Re: Richmond Public Art Program 2011 Annual Report and Public Art Advisory
Committee 2012 Work Plan

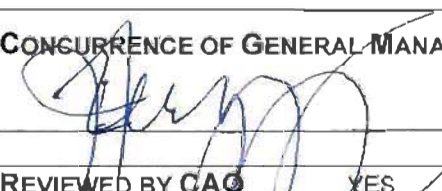
Staff Recommendation

That the Richmond Public Art Advisory Committee 2012 Work Plan be approved.



Jane Fernyhough
Director, Arts, Culture and Heritage
(604-276-4288)

Att. 2

| FOR ORIGINATING DEPARTMENT USE ONLY | | | |
|-------------------------------------|---|--|---|
| ROUTED TO: | CONCURRENCE | CONCURRENCE OF GENERAL MANAGER | |
| Budgets | Y <input checked="" type="checkbox"/> N <input type="checkbox"/> |  | |
| REVIEWED BY TAG | YES <input checked="" type="checkbox"/> NO <input type="checkbox"/> | REVIEWED BY CAO | YES <input checked="" type="checkbox"/> NO <input type="checkbox"/> |

Staff Report

Origin

On July 27, 2010, Council approved the updated “Richmond Public Art Program. Public art animates the built and natural environment with meaning, contributing to a vibrant city in which to live and visit. The goals of the Public Art Program are to:

- Spark community participation in the building of our public spaces;
- Provide leadership in public art planning;
- Complement and develop the character of Richmond’s diverse neighbourhoods;
- Increase public awareness, understanding and enjoyment of the arts;
- Encourage public dialogue about art; and
- Encourage public art projects that work towards achieving a more sustainable community.

This report presents the Richmond Public Art Program 2011 Annual Report to Council, and the proposed Public Art Advisory Committee 2012 Work Plan, for approval.

Analysis

The Richmond Public Art Program 2011 Annual Report (**Attachment 1**) highlights the key activities and achievements of the City’s public art program through the civic, community and private development programs in 2011.

The Public Art Advisory Committee 2012 Work Plan (**Attachment 2**) outlines the proposed work tasks for the volunteer committee for 2012. The Richmond Public Art Advisory Committee, as a Council appointed advisory Committee, advises on all aspects of public art policy, planning, education and promotion, including the allocation of funds from the City’s designated Public Art Reserve.

Financial Impact

There is no financial impact to this report.

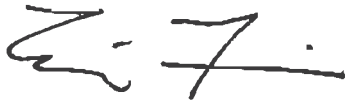
Conclusion

The Richmond Public Art Program 2011 Annual Report and proposed Public Art Advisory Committee 2012 Work Plan demonstrate a high level of professionalism, volunteerism and commitment to quality public art in Richmond.

February 13, 2012

- 3 -

The Public Art Program 2011 Annual Report is presented for information and the Richmond Public Art Advisory Committee 2012 Work Plan is recommended for approval.

A handwritten signature in black ink, appearing to read 'E. Fiss'.

Eric Fiss
Public Art Planner
(604-247-4612)

EF:cf

City of Richmond

Public Art Program 2011 Annual Report

Arts, Culture and Heritage Services

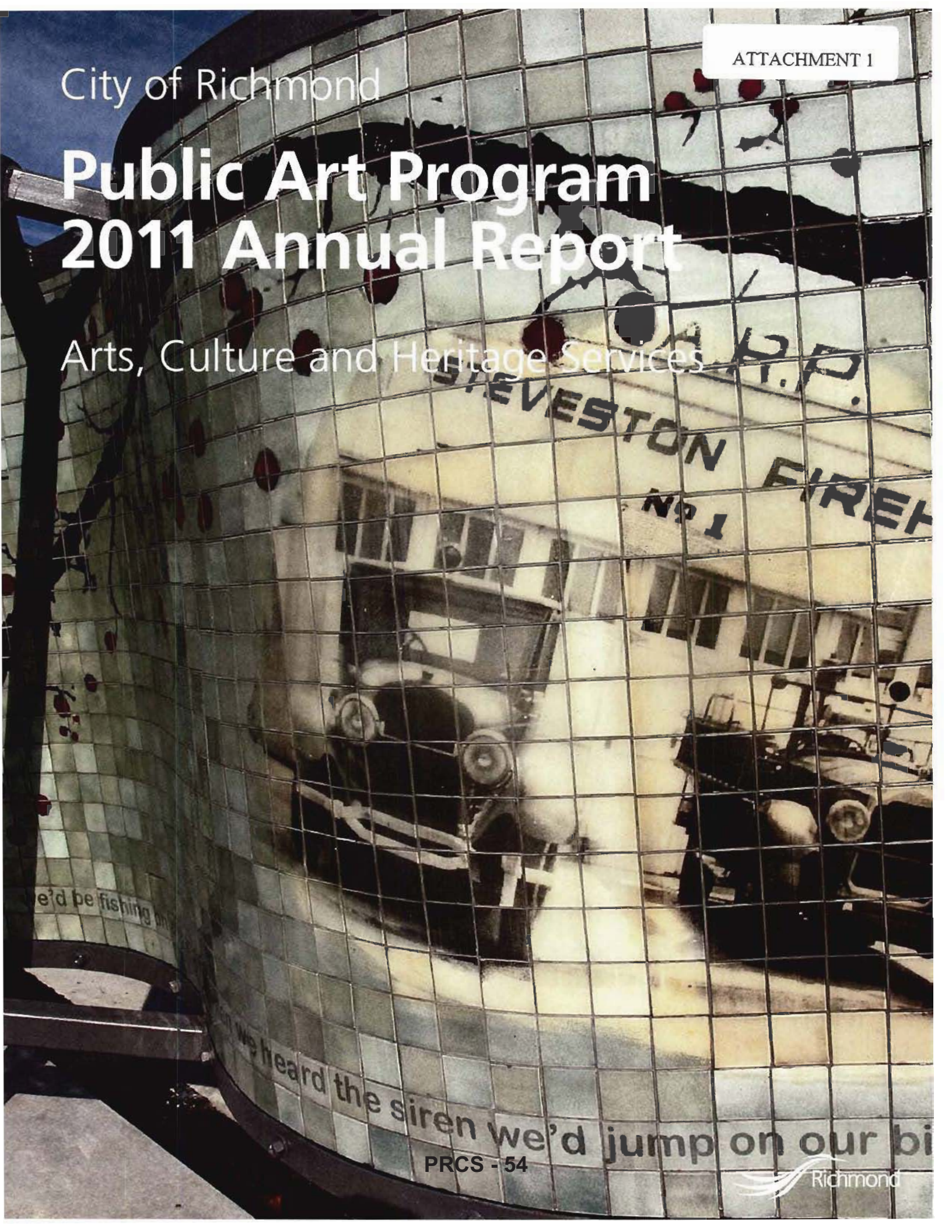


Table of Contents

| | |
|--|----|
| Richmond Public Art Program | 1 |
| 2011 Annual Report | 1 |
| State of the Public Art Program..... | 2 |
| 2011 Public Art Projects | 3 |
| Civic Public Art Program..... | 3 |
| Private Development Public Art Program | 6 |
| Community Public Art Program..... | 8 |
| Unique Projects..... | 9 |
| Summary | 11 |
| Richmond Public Art Advisory Committee | 11 |
| 2011 Richmond Public Art Advisory Committee (RPAAC) | 11 |
| Public Art Program Staff..... | 11 |
| Appendices | |
| Appendix 1 – Artworks Installed in 2011 | |
| Appendix 2 – Projects Underway 2012 | |
| Appendix 3 – Financial Summary | |

Richmond Public Art Program

2011 Annual Report

Introduction

Significant among the projects completed in 2011 are the City initiated public art projects with new City facilities, including those completed for the openings of the expanded Hamilton Community Centre, Steveston Fire Hall No. 2 and the Richmond Community Safety Building. These projects represent the City's continued support and investment in public art in the city. The integration of public art has contributed to the success of the award winning new No. 4 Road Drainage Pump Station. Underway for 2012, in cooperation with Facilities and Heritage, the selection process is in progress to recommend the artist for the new Steveston Tram Building.

The Public Art Program expanded into City parks in a big way in 2011. The installation of the remaining stone sculptures to complete Human Nature was realized with the completion of the Alberta Road Greenway, adjacent to Garden City Park. This was the former site vacated by the temporary installation of the Biennale Blue Trees project. The Blue Trees have been relocated to their permanent home along Granville Avenue in the south side of Garden City Park, that is, until the blue colourant fades away.

Dog Party, at the No 3 Road Doggie Park, was refurbished and re-installed in new groupings, to complement the new benches and trees. In Terra Nova Rural Park, four of the six Art Benches were installed in late 2011, with the installation of the final two scheduled for early 2012. An unveiling event is planned for the Spring, to coincide with Doors Open 2012.

Cover: *Roots of Our Future*, Blake Williams, 2011

In Steveston Village, working with the Transportation Division, a community focussed art contest was used to select a winning design for the new scramble crosswalk at No. 1 Road and Moncton Street. In 2011, the Community Public Art Program completed Community in Motion at the South Arm Community Centre, Green Symphony at the Richmond Nature Park and shOP ART 2011 at Lansdowne Shopping Centre, with two new projects in development for 2012.

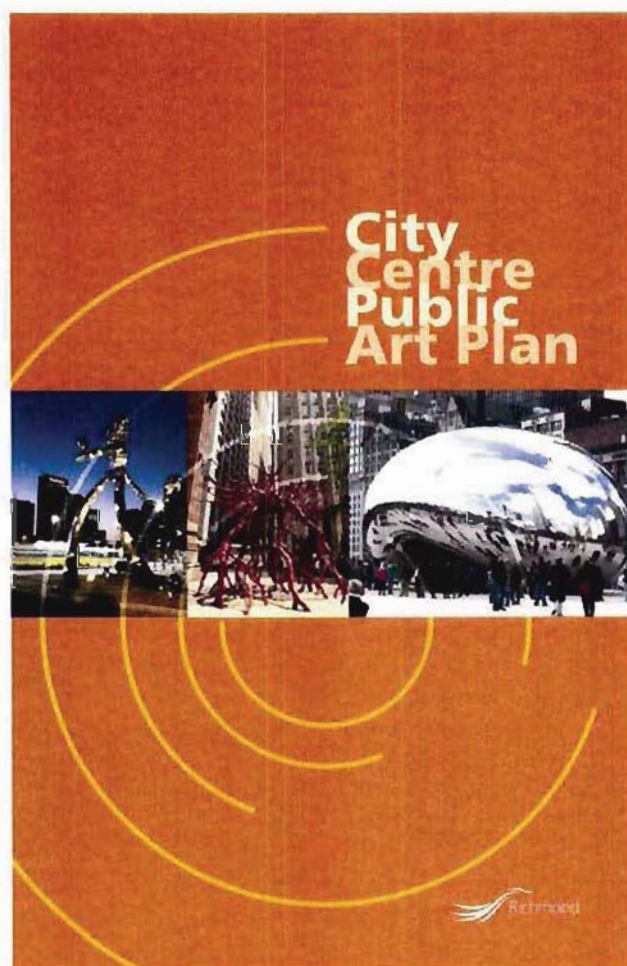
The commitment to public art projects with private development remained strong in 2011, with financial commitments to public art for more than a dozen new developments within the City Centre. Work has continued on the fabrication and installation of art works for the Broadmoor Neighbourhood Service Centre, two projects for the River Green Village on the Middle Arm, and at the Prado and Centro Parkside developments in the City Centre.

Unique public art opportunities for temporary artworks included the City participation in the Vancouver International Sculpture Biennale 2009-2011, and the continuation with new exhibits in the No. 3 Road Art Columns, which provides an opportunity to showcase artists who work in two-dimensional media.

State of the Public Art Program

City Centre Area Public Art Plan

On October 11, 2011, Council endorsed the City Centre Area Public Art Plan as a guide for the placement of public art in the City Centre. The plan provides a framework to enrich Richmond's urban identity by incorporating inspirational and meaningful art in the public realm. This will enable Richmond's Public Art Program to be more strategic in commissioning and locating a complement of permanent and temporary small and large-scale public artworks in the City Centre.



City of Richmond City Centre Public Art Plan, endorsed by Council October 11, 2011

Panellist Pool

In June 2011, the City of Richmond Public Art Program offered an exciting opportunity for individuals to participate in the public art process and contribute to the life and cultural vibrancy of the City. By offering to serve in the Panellist Pool, art professionals and other interested persons serve in the selection process for future public art projects. In Richmond, public art is selected through an arms-length process incorporating professional advice and community input. This ensures the quality of art and its relevance to the community. Applications were open to all individuals who live in Metro Vancouver.

Public Art Tours

Public Art Program staff provided several briefings and tours of the City's Public Art Collection in 2011. These included one for fine art students from Kwantlen Polytechnic University currently taking a course on Public Art – Theory and Practice; a tour for a continuing education class from Emily Carr University of Art and Design; and a field trip to the Oval Precinct with two classes from General Currie Elementary School. A tour for six teenagers participating in the Media Lab Program resulted in the production of a Podcast featuring interpretations of the "Blue Trees" installation. The Richmond Public Art Advisory Committee held their annual Public Art Bus Tour in June 2011. These tours promote awareness and understanding of the public art program.

2011 Public Art Projects

Civic Public Art Program

Civic Public Art Program Background

The City's policy is to provide leadership in public art by incorporating public art, at the planning stages, into the development or renovation of civic infrastructure, buildings, parks and bridges. To create projects of the highest quality the policy encourages collaboration between the Public Art Advisory Committee, City staff, artists, engineers, design professionals and the community.

The priority for civic public art projects is to fully integrate the artwork into the planning, design and construction of civic works and to select and commission an artist to work as a member of the project consultant design team, in order to maximize opportunities for artistic expression and minimize material and construction costs.

The civic public art projects completed in 2011 have ranged from small-scale improvements in the public realm, such as the contest for the design of the new crosswalk at No. 1 Road and Moncton Street, to major works of public art at new civic facilities.

Historic Steveston Contest

In late 2010, the Historic Steveston Contest was launched to find a pavement-top art design for the intersection upgrade at the new signalized scramble crosswalk at No. 1 Road and Moncton Street. There were 70 designs submitted by people who live, work or go to school in Richmond. The winners, selected by an independent judging panel, were Carlyn Yandle for the pedestrian scramble design, and Hapa Collaborative for the traditional crosswalk design. Honourable Mentions went to Carolyn Fisk, Keith Lau and Oliver B. Malana. Contest entries were on display from June 17 to 30 at Steveston Community Centre.



Crossover, Carlyn Yandle, 2011

Hamilton Community Centre

Hamilton Then and Now, by artist Mia Weinberg, was unveiled at the Official Opening of the expanded Hamilton Community Centre on May 28, 2011. The art project engages the community through maps and references to historical figures who are remembered in the road names of Hamilton today. Weinberg was able to work with innovative materials consistent with the beautifully designed community centre. Source material included several historical photographs, a blueprint of the Veterans' Land Act subdivision and two maps, the first from 1938 and the second from 2010.



Hamilton Then and Now, Mia Weinberg, 2011

No. 4 Road Pump Station

Working River, by artist Sylvia Grace Borda, is a building sized photomontage, which incorporates archival photos depicting river life from the early 20th century within the context of a colourful reproduction of a 1950's aerial map of the Middle Arm of the Fraser. The work, installed May 2011, covers two walls of the Control Room Building at the new No. 4 Road Pump Station. The photo mural provides a powerful connection of the historic past with the ongoing work activities on the Fraser River.



Working River, Sylvia Grace Borda, 2011

Richmond Community Safety Building

The Coat of Arms, by artist Glen Andersen, is a three-part artwork representing elements from the City of Richmond Coat of Arms for the new Richmond Community Safety Building at No. 5 Road and Steveston Highway. It includes a large mosaic depiction of the cornucopia on the entrance plaza, the phrase "Child of the Fraser" on metal panels on the corners of the building, and a metal sculpture combining images of river grasses and three salmon. The mosaic component of was unveiled at the official opening of the building in November.



The Coat of Arms, Glen Andersen, 2011

Steveston Fire Hall Public Art Project

The artwork ***Roots of Our Future***, by Blake Williams, was unveiled in October at the opening of the new Steveston Fire Hall at the prominent intersection of No. 2 Road and Steveston. Using photo-imagery and text applied to 3,800 glass tiles, the undulating wave form honours the history and current activities of the Richmond Fire Department while also representing the community of Steveston.



Roots of Our Future, Blake Williams, 2011

Terra Nova Rural Park Art Benches

The Richmond Public Art Program, in collaboration with Parks & Recreation, invited accomplished artists, including designers and crafts persons, to submit original concept proposals to design, fabricate and install one of six unique 'benches' or seating opportunities for Terra Nova Rural Park. Artists were encouraged to consider creative designs as they interpreted the themes of "Environment" and/or "Agriculture". Four of the six benches were installed in November, including ***Bench Ideal*** by the artists Ideal Team, ***Ravens*** by Thomas Cannell, ***Perigeal Raft*** by Mark Ashby, and ***Cascade*** by Peter Pierbon. The two remaining benches by Khalil Jamal & Toby Colquhoun and Norm Williams are due to be installed in the near future.



Perigeal Raft, Mark Ashby, 2011



Ravens, Thomas Cannell, 2011



Bench Ideal, Ideale Team, 2011



Dog Party, Michael Swayne



Cascade, Peter Pierbon, 2011

Dog Party

Dog Party, by artist Michael Swayne, a series of twelve painted metal steel dog sculptures that range in size, pose and colour were originally installed in 2003 at the Doggie Park at the south end of No. 3 Road. In 2011, they were refurbished and installed in two new groupings and around a new seating area within the park.

Private Development Public Art Program

Policy Background

The City's policy is to encourage the private sector to support the integration of public artworks in the community during the rezoning and development permit processes, and the collaboration of artists, design professionals and the community in the design of that art.

Private Development Artworks

Parc Riviera:

- **Water #10**, by Jun Ren, featured at the Cambie Pump Station, will remain permanently in Richmond. Purchased by the developers for Parc Riviera, plans are to relocate it to the Fraser River site along River Drive in 2013.



Water #10, Jun Ren, 2010, Temporary location at Cambie Plaza

Public Art Plans

The Public Art Plan is the most important first step in the creation of a successful new public artwork. For developers planning to integrate a public artwork with their new development, a plan is prepared at the earliest possible stage and submitted for review by staff and the Public Art Advisory Committee. The Plan includes information on site opportunities, themes, budget, and method of artist selection.

In 2011, Public Art Plans envisioning a total contribution to public art projects with a value of \$1.44 million have been submitted and endorsed by the Public Art Advisory Committee. See table below. Implementation of these projects, some of which are multi-phased, will commence in 2012.

In 2012, there will be continued growth in the private development program, with the presentation of Public Art Plans for new developments in the Capstan and Lansdowne Villages in the City Centre.

Private Development Public Art Plans, 2011

| Project/Address | Developer | Planning Area | Budget ¹ |
|--|----------------------------------|--|------------------------|
| River Green Village, 5200 Hollybridge Way | ASPAC | City Centre (Oval Village) | \$625,000 ² |
| Camino, 8068 Westminster Highway | MingLian Holdings | City Centre (Brighthouse Village) | \$150,000 |
| Circa, 10020/60 Dunoon Drive | First Capital Realty Inc. | Broadmoor (Neighbourhood Service Centre) | \$40,000 |
| The Gardens, 12011 Steveston Highway Quintet, 5931/91 No. 3 Road and 5900 Minoru Boulevard | Townline Group of Companies | Shellmont | \$125,000 ² |
| Quintet, 5931/91 No. 3 Road and 5900 Minoru Boulevard | Canada Sunrise Development Corp. | City Centre (Brighthouse Village) | \$300,000 ² |
| Brighthouse Station, 6180/6280/6300 No. 3 Road | Fairborne Homes Limited | City Centre (Brighthouse Village) | \$200,000 ² |

Notes:

¹ Estimated artwork budget (does not include the 15% administration allowance)

² Multi-phased developments

Community Public Art Program

Introduction

The Richmond Community Public Art Program supports art projects between community groups and artists of all disciplines. Artists and communities working collaboratively explore issues, ideas and concerns, voice community identity, express historical and cultural spirit, and create dialogue through art.

The Community Public Art Program receives its funding from voluntary developer contributions to the Public Art Reserve, private donations, and grants from other levels of government.

In 2011 three projects were completed, and another two are underway for completion in 2012.

Community in Motion

In February, *Community in Motion*, by artist Corinna Hanson, was installed on the north and west exterior walls of South Arm Community Centre. The artwork, created with children participating in the Community Centre art programs, consists of a series of 25 mosaic panels depicting flowers, leaves, birds and insects. The goal of this project was to express the diverse range of activities and experiences that reflect the issues and ideas relevant to the people who live in the area.



Community in Motion, Corinna Hanson, 2011

Green Symphony

Green Symphony, by artist Jeanette G. Lee, consists of seven unique metal sculptures ranging from four feet to 12 feet high and working in harmony to represent life in the park. The opportunity for a community driven public artwork was discovered when the Richmond Nature Park needed a new sign, with the end result being a new electronic sign embellished with metal work from the artist, and a new public artwork. The artist worked with children from nearby DeBeck and Mitchell elementary schools to develop the theme; the interconnectivity of organic life within the park and how it reflects the interconnectivity of individuals in a community. The sculptures were unveiled in July at an evening ceremony in the park.



Green Symphony, Jeanette G. Lee

shOP ART 2011

As part of the 2011 Richmond Winter Festival of the Arts, February through March 15, 2011, the City of Richmond presented *shOP ART 2011*, an innovative and exciting new professional development program for visual artists. Over a period of three weeks, five participating artists, working under the mentorship of professional visual artist

Marina Szijarto, created their own site-specific work in select empty storefronts in Lansdowne Centre. This unique professional development program was offered FREE to participating artists eager to experiment—or develop their existing practice—with Installation Art.



l to r: Tony Yin Tak Chu, Ilsoo Kyung MacLaurin, Liane McLaren Varnam, Teresa S.W. Chow, Marina Szijarto, David Akselrod, Julie McIntyre

Unique Projects

Discovering Art on No. 3 Road

The No. 3 Road Art Columns, co-sponsored by Appia Group of Companies, are part of the City's commitment to enhance the No. 3 Road streetscape. They provide the opportunity to showcase local and regional artists who work in two-dimensional media and wish to participate in public art.

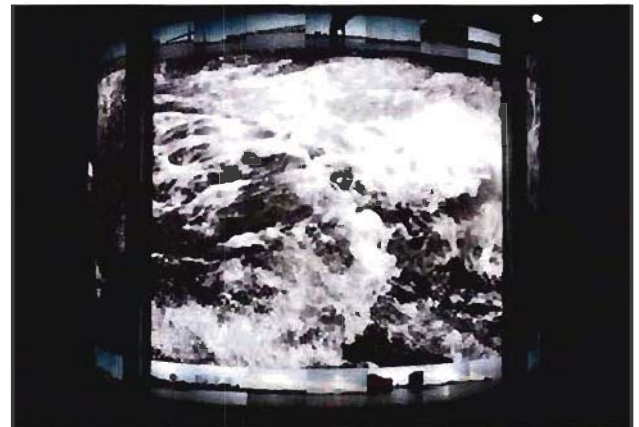
The second group of artworks by local artists went on display on the Art Columns at Canada Line Stations in December 2010, and featured *You Are Here*, by Mia Wienberg at Brighthouse; *The Glory of the Wood*, Andrea Sirois at Lansdowne; and *Metro Dykes - North, South and Middle Arms of the Fraser River*, by Barbara Zeigler at Aberdeen.



You Are Here, Mia Wienberg, 2011



The Glory of the Wood, Andrea Sirois, 2011

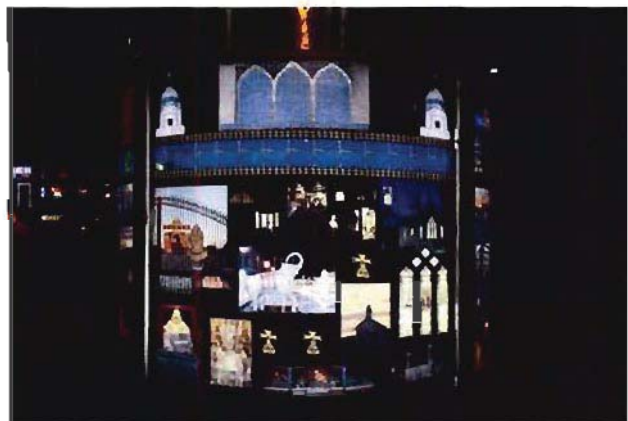


Metro Dykes - North, South and Middle Arms of the Fraser River, Barbara Zeigler, 2011

The theme of the third exhibit in 2011 was Layering Life and Culture, and these pieces went on display in June. The exhibit featured artwork by the following three local artists: *Here is There is Here* by Diyan Achjadi at Aberdeen; *Richmond's Evening Hues*, by Carolyn Sullivan at Lansdowne; and *The Good Life*, by Wilfrido Limvalencia at Brighthouse.



Here is There is Here, Diyan Achjadi, 2011



Richmond's Evening Hues, Carolyn Sullivan, 2011



The Good Life, Wilfrido Limvalencia, 2011

Vancouver Biennale

The final Biennale project, *Blue Trees*, by artist Konstantin Dimopolous, was installed in Garden City Community Park, in the spring of 2011. Dimopoulos's public installations focus on social and environmental themes, and the "Blue Trees" project highlights the importance of trees to the planet's survival as it raises awareness about the benefits of forests to current and future generations.



Blue Trees, Konstantin Dimopolous, 2011

In February 2011, a two-question survey was made available to the public to obtain the public's opinion on which, if any, Vancouver International Sculpture Biennale 2009-2011 public artworks should be purchased for the City's permanent public art collection. Results concluded that there was not clear support for City purchase of any of the Biennale artworks.

Summary

For 2011 the Richmond Public Art Program experienced continued growth. There were many opportunities for placing art in the public realm with the participation of a broad range of community groups and a diversity of artworks.

For the administration of the program, the City Centre Public Art Plan, endorsed by Council October 11, 2011, was a significant achievement. In preparing the Plan, staff consulted extensively with the community, lead by a talented Advisory Group, and worked in close consultation with the development industry. Staff also consulted extensively with other City departments and with colleagues in public art from many other cities. Developing the City Centre Public Art Plan is an important step in ensuring the effectiveness and efficiency in advancing the City's Public Art Program into the future. The identification of opportunities and priorities will help the City deliver a more robust, competitive and professional public art program in cooperation with the development industry.

Major civic public art projects were installed in City facilities throughout Richmond requiring extraordinary expertise and cooperation between the consultants and contractors responsible for completing these civic facilities. The City is wise to support an innovative public art program for Richmond. Cities with vibrant arts and culture attract the creative thinkers who produce economic wealth and cultural health.

Richmond Public Art Advisory Committee

2011 Richmond Public Art Advisory Committee (RPAAC)

Diana (Willa) Walsh, *Chair*

Steve Jedreicich, *Vice Chair*

Lee Beaudry

Chris Charlebois

Sandra Cohen

Aderyn Davies

Simone Guo

Valerie Jones

Xuedong Zhao

Council Liaison: Councillor Evelina Halsey-Brandt

Public Art Program Staff

Cathryn Volkering Carlile, *General Manager - Community Services*

Jane Fernyhough, *Director,*

Arts, Culture & Heritage Services

Kim Somerville, *Manager, Arts Services*

Eric Fiss, *Public Art Planner*

Joao Canhoto, *Public Art Assistant*

Jodi Allesia, *Committee Clerk*

Richmond Public Art Program Annual Report

Artworks Installed in 2011

Total Number of Projects: 17
Report Total: \$297,750

| Planning | | | | | | | |
|---|---------------------------|-------------|--|-------------------------------|-------------------|--|-------------------------------------|
| Artwork/Project | Installed | Area | Address | Artist(s) | Type | Funding Source Budget | Status |
| Civic | Total Number of Projects: | | | Report Total: | | 10 | \$202,000 |
| Working River - No. 4 Rd Drainage Pump Station Project | May/2011 | Bridgeport | 2002 No. 4 Rd. | Sylvia Grace Borda, Vancouver | Photography | City of Richmond | \$25,000 21 - Artwork Documentation |
| Authentic Aboriginal - Oval Precinct Public Art Program | Nov/2011 | City Centre | Richmond Olympic Oval, 6111 River Rd. | Sonny Assu, Vancouver | Painting | VANOC Venues Aboriginal Art Program and City of Richmond | \$20,000 21 - Artwork Documentation |
| Human Nature II - Garden City Community Park | Dec/2011 | City Centre | Garden City Community Park, 9120 Alberta Road | Paul Slipper, Vancouver | Sculpture | Chandler Development Group | \$50,000 20 - Artwork Complete |
| Hamilton Then And Now - Hamilton Community Centre | Mar/2011 | Hamilton | Hamilton Community Centre, 5140 Smith Dr. | Mia Weinberg, Vancouver | Interior Fixture | City of Richmond | \$35,000 20 - Artwork Complete |
| Crossover - Transportation Department Historic Steveston Village Intersection Contest | Nov/2011 | Steveston | The Intersection of No. 1 Road and Moncton Street. | Carlyn Yandle, Vancouver | Street Fixture | City of Richmond | \$5,000 21 - Artwork Documentation |
| Roots of Our Future - Steveston Fire Hall Public Art Project | Sep/2011 | Steveston | No. 2 Fire Hall (Steveston), 11011 No. 2 Rd, V7E 2E6 | Blake Williams, Vancouver | Ceramics | City of Richmond | \$35,000 21 - Artwork Documentation |
| Cascade - Terra Nova Bench Project | Nov/2011 | Thompson | Terra Nova Rural Park, 2431 Westminster Hwy. | Peter Plerobon, Vancouver | Street Furnishing | City of Richmond | \$8,000 21 - Artwork Documentation |
| Perigeal Raft - Terra Nova Bench Project | Nov/2011 | Thompson | Terra Nova Rural Park, 2431 Westminster Hwy. | Mark Ashby, Vancouver | Street Furnishing | City of Richmond | \$8,000 21 - Artwork Documentation |
| Ravens - Terra Nova Bench Project | Nov/2011 | Thompson | Terra Nova Rural Park, 2431 Westminster Hwy. | Thomas Cannell, Vancouver | Street Furnishing | City of Richmond | \$8,000 21 - Artwork Documentation |



Richmond Public Art Program Annual Report

Artworks Installed in 2011

Total Number of Projects: 17
Report Total: \$297,750

| Artwork/Project | Installed | Planning Area | Address | Artist(s) | Type | Funding Source | Budget | Status |
|---|-----------|---------------|--|--|-------------------|--------------------------|----------|----------------------------|
| <i>WorkBench</i> - Terra Nova Bench Project | Oct/2011 | Thompson | Terra Nova Rural Park, 2431 Westminster Hwy. | Id&@le concepts, Vancouver Davide Pan, Vancouver | Street Furnishing | City of Richmond | \$8,000 | 21 - Artwork Documentation |
| Community Total Number of Projects: 3 Report Total: \$80,000 | | | | | | | | |
| <i>Green Symphony</i> - Nature Park Community Public Art Project | May/2011 | Bridgeport | Richmond Nature Park, 11851 Westminster Hwy. | Jeanette G. Lee, Vancouver | Sculpture | Public Art Reserve | \$60,000 | 20 - Artwork Complete |
| <i>Community In Motion</i> | Feb/2011 | Broadmoor | South Arm Community Centre, 8880 Williams Rd. | Corinna Hanson, Vancouver | Mosaic | Public Art Reserve | \$15,000 | 21 - Artwork Documentation |
| <i>SHOP ART 2011</i> - Lansdowne Shopping Centre | Feb/2011 | City Centre | Lansdowne Centre, 5300 No. 3 Road | David Akseirod, Richmond Teresa S.W. Chow, Richmond Tony Yin Tak Chu, Richmond Ilsoo Kyung MacLaurin, Delta Julie McIntyre, Vancouver Marina Szijarto, Richmond Liane McLaren Vamam, Burnaby | | Public Art Reserve | \$5,000 | 33 - No Longer on Display |
| Unique Programs Total Number of Projects: 4 Report Total: \$15,750 | | | | | | | | |
| <i>Blue Trees</i> - Vancouver International Sculpture Biennale 2009-2011 | Mar/2011 | City Centre | Garden City Community Park, 6820 Garden City Rd. | Konstantin Dimopoulos, Melbourne | Temporary | Public Art Reserve | \$750 | 20 - Artwork Complete |
| <i>Here Is There Is Here</i> - Art Columns - Exhibit 3 - Aberdeen | Jun/2011 | City Centre | 4000 No. 3 Rd. | Diyan Achjadi, Vancouver | Digital Images | Appia Group of Companies | \$5,000 | 33 - No Longer on Display |
| <i>Richmond's Evening Hues</i> - Art Columns - Exhibit 3 - Lansdowne | Jun/2011 | City Centre | 5300 No. 3 Rd. | Carolyn Sullivan, Burnaby | Photography | Appia Group of Companies | \$5,000 | 33 - No Longer on Display |
| <i>The Good Life</i> - Art Columns - Exhibit 3 - Brighouse | Jun/2011 | City Centre | 6280 No. 3 Rd. | Wilfrido Limalencia, Richmond | Painting | Appia Group of Companies | \$5,000 | 33 - No Longer on Display |



Richmond Public Art Program Annual Report

Projects Underway 2012

Total Number of Projects: 59
Report Total: \$4,318,146

| Artwork/Project | Installed | Planning | | Artist(s) | Address | Type | Funding Source Budget | | Status |
|---|-----------|-----------------------|--|---|---------|-------------------|--|---------------|--------------------------------------|
| | | Area | Area | | | | Total Number of Projects: | Report Total: | |
| Civic | | | | | | | 13 | \$826,229 | |
| <i>Alexandra District Energy Utility - Oris Geo Energy</i> | | Bridgeport | 8580 and 9600 Odlin Road | | | Oris Geo Energy | | | 00 - Development Applications Review |
| <i>The Coat of Arms - Richmond Community Safety Building</i> | | Broadmoor | 11411 No. 5 Road | Glen Andersen, Richmond | | Mosaic | City of Richmond | \$90,000 | 10 - Installation |
| <i>Canada Line Termination Project</i> | | City Centre | | | | | | | 01 - Opportunity Identified |
| <i>Hamilton Child Care Facility</i> | | Hamilton | | | | | City of Richmond | | 01 - Opportunity Identified |
| <i>Killer Whale in the Salish Sea - Oval Precinct Public Art Program</i> | | Olympic Oval Precinct | Richmond Olympic Oval 6111 River Road, V7C 0A2 | Chrystal Sparrow. | | Sculpture | VANOC Venues Aboriginal Art Program and City of Richmond | \$55,000 | 08 - Fabrication |
| <i>Lulu Suite Phase II - Lobby Projection - Oval Precinct Public Art Program</i> | | Olympic Oval Precinct | Richmond Olympic Oval 6111 River Road Richmond, BC V7C 0A2 | Deanne Achong, Vancouver Faith Moosang, Vancouver | | | Oval Precinct Public Art Program | \$350,000 | 08 - Fabrication |
| <i>Lulu Suite: Telling the Stories of Richmond Phase 1 - Oval Precinct Public Art Program</i> | | Olympic Oval Precinct | | Deanne Achong, Vancouver Faith Moosang, Vancouver | | Multi-media | City of Richmond | \$300,000 | 08 - Fabrication |
| <i>Chatham Japanese House Reno (2010)</i> | | Steveston | | | | | City of Richmond | \$2,000 | 01 - Opportunity Identified |
| <i>Steveston Interurban Tram Building</i> | | Steveston | 4005 Moncton St. | | | | City of Richmond | \$13,229 | 05 - Selection Panel |
| <i>Bench Jamal & Calquhoun - Terra Nova Bench Project</i> | | Thompson | Terra Nova Rural Park, 2431 Westminster Hwy. | Toby Colquhoun, Vancouver Khalil Jamal, Richmond | | Street Furnishing | City of Richmond | \$8,000 | 10 - Installation |
| <i>Bench Norm Williams - Terra Nova Bench Project</i> | | Thompson | Terra Nova Rural Park, 2431 Westminster Hwy. | Norm Williams, Abbotsford | | Street Furnishing | City of Richmond | \$8,000 | 10 - Installation |

Richmond Public Art Program Annual Report

Projects Underway 2012

Total Number of Projects: 59

Report Total: \$4,318,146

| Artwork/Project | Installed | Planning Area | Address | Artist(s) | Type | Funding Source | Budget | Status |
|---|-----------|-----------------------|-------------------------|------------------------|-----------|------------------------|---------------|-----------------------------|
| No. 3 Road Fence Project - Cambie and Saba Roads | | | | | | City of Richmond | | 02 - Project Planning |
| Oval Precinct Community Public Art Program | | | | | | City of Richmond | | 01 - Opportunity Identified |
| Community | | | | | | | | |
| Total Number of Projects: Report Total: | | | | | | | 5 \$60,000 | |
| Hugh McRoberts Secondary School Community Public Art Project | | Broadmoor | | | | Public Art Reserve | \$15,000 | 05 - Selection Panel |
| Richmond Multicultural Community Services Society | | City Centre | | Zoe Kreye, Vancouver | | Public Art Reserve | \$15,000 | 07 - Contracting |
| Transitions - Transitions Vancouver Coastal Health - 600 -8100 Granville Ave. | | City Centre | 600-8100 Granville Ave. | Tiana Kaczor, Richmond | | Public Art Reserve | \$15,000 | 08 - Fabrication |
| The Sharing Farm Community Public Art Project | | Thompson | | Clare Yow, Vancouver | | Public Art Reserve | \$15,000 | 07 - Contracting |
| Tours - Walking Tour Cross marketing | | | | | | | | |
| Donation | | | | | | | | |
| Total Number of Projects: Report Total: | | | | | | | 2 \$50,000 | |
| Replanski Granite Donation - Dora Replanski | | City Wide | | | | Dora Replanski | | |
| Mander Metal Volleyball Player Art Project - Metal Volleyball Player Donation | | Olympic Oval Precinct | | Cory Fuhr, Vernon | Sculpture | Dave Mander and Family | \$50,000 | 07 - Contracting |



Richmond Public Art Program Annual Report

Projects Underway 2012

Total Number of Projects: 59

Report Total: \$4,318,146

| Artwork/Project | Installed | Planning Area | Address | Artist(s) | Type | Funding Source | Budget | Status |
|--|-----------|---------------|---|-----------|------|--|--------------------|--------------------------------------|
| Private | | | | | | Total Number of Projects: | 39 | |
| | | | | | | Report Total: | \$3,381,917 | |
| 14000 Riverport Way | | Bridgeport | 14000 Riverport Way | | | Patrick Cotter Architects | | 01 - Opportunity Identified |
| 4008 Stolberg Street - Alexandra Gate - Ons Development (Cambie) Corp. | | Bridgeport | | | | Oris Development Corp. | | 01 - Opportunity Identified |
| 8740 Charles Street Hotel and Office | | Bridgeport | 8740-8900 Charles St | | | Charles Street Holdings Ltd - Simon Cheung | | 00 - Development Applications Review |
| 9251-9291 Alexandra Rd. F Adab Architects Inc. | | Bridgeport | 9271 Alexandra Rd (9251/91 Alexandra Rd) | | | F Adab Architects Inc. | | 00 - Development Applications Review |
| 9388 Cambie Road - Remy - Ons Development (Cambie) Corp. | | Bridgeport | 9388 Cambie Rd | | | Oris Development Corp. | \$150,000 | 01 - Opportunity Identified |
| 9393 Alexandra Road - Polygon Homes | | Bridgeport | 9393 Alexandra Road | | | Home Creations | \$64,464 | 01 - Opportunity Identified |
| 9500 Cambie Road - 9500 Cambie Road - GBL Architects Group - 0890784 Bc Ltd | | Bridgeport | 9500 Cambie Rd | | | GBL Architects Group | | 00 - Development Applications Review |
| 9500 Odlin Polygon Development - 9500 Odlin Polygon Development 222 Ltd | | Bridgeport | 9420/60/80/9500 Odlin Rd | | | Polygon Development Ltd. | \$126,260 | 00 - Development Applications Review |
| First Richmond North Shopping Centre | | Bridgeport | 4660-4740 Garden City Rd. 9040-9500 Alexandra Rd. | | | First Richmond North Shopping Centres Ltd. | | 00 - Development Applications Review |
| Mayfair Place at 9399 Odlin Road Polygon - Mayfair Place | | Bridgeport | 9399 Odlin Rd | | | Polygon Development Ltd. | | 01 - Opportunity Identified |
| Polygon Hennessy Green - Polygon Development 172 Ltd | | Bridgeport | 9800 Odlin | | | Polygon Development Ltd. | | 01 - Opportunity Identified |

PRCS - 70



Richmond Public Art Program Annual Report

Projects Underway 2012

Total Number of Projects: 59

Report Total: \$4,318,146

| Artwork/Project | Installed | Planning Area | Address | Artist(s) | Type | Funding Source | Budget | Status |
|--|-----------|---------------|--|--|-----------|---------------------------|-----------|-----------------------------|
| <i>Polygon Meridian Gate</i> - Polygon Meridian Gate Homes Ltd. | | Bridgeport | 9288 Odlin | | | Polygon Development Ltd. | | 01 - Opportunity Identified |
| <i>Polygon Wishing Tree</i> - Polygon Wishing Tree 9631-91 Alexandra Rd and 4471, 4511-51 No. 4 Rd | | Bridgeport | 9566 Tomicki Ave. | | | Polygon Development Ltd. | \$11,864 | 01 - Opportunity Identified |
| <i>Villa Esperanza</i> - The Orchard - 9340, 9360, 9400 Odlin Rd. | | Bridgeport | 9388 Odlin Rd | Ruth Beer, Vancouver Charlotte Wall, Vancouver | Sculpture | Esperanza Homes Ltd. | \$100,000 | 07 - Contracting |
| <i>Water #10 at Parc Riviera</i> - Parc Riviera Biennale Purchase | | Bridgeport | 1880 No. 4 Road and 10071/91/10111/ 31/51/ 10311 River Drive | Jun Ren, | Sculpture | Ors Development Corp. | \$450,000 | 10 - Installation |
| <i>Broadmoor Neighbourhood Service Centre "Circa"</i> - Circa - Broadmoor Neighbourhood Centre Kasian Architecture | | Broadmoor | 7820 Williams Rd and 10020/60 Dunoon Dr | Blake Williams, Vancouver | Mosaic | First Capital Realty Inc. | \$50,000 | 07 - Contracting |
| <i>The Gardens</i> - Townline Homes | | Broadmoor | 12011 Steveston Hwy and 10620/40 and 10800 No. 5 Rd | | | Townline Homes | \$125,000 | 01 - Opportunity Identified |
| <i>Aberdeen Square</i> | | City Centre | 4000 No. 3 Road/8000 Cambie | | | Fairchild Developments | | 02 - Project Planning |
| <i>ASPAC River Green Village</i> - ASPAC | | City Centre | 5200 Hollybridge Way, 6300, 6380, and 6500, 6900 River Rd | | | ASPAC | \$737,340 | 01 - Opportunity Identified |



Richmond Public Art Program Annual Report

Projects Underway 2012

Total Number of Projects: 59

Report Total: \$4,318,146

| Artwork/Project | Installed | Planning Area | Address | Artist(s) | Type | Funding Source | Budget | Status |
|--|-----------|---------------|---|---|-------|-----------------------------------|-----------|---|
| <i>Bridgeport Hotel & Business Centre - AMPAR Ventures Ltd</i> | | City Centre | 9451/ 9491/ 9511/ 9531/ 9551 Bridgeport Rd and 9440/ 9460/ 9480 Beckwith Rd | | | AMPAR Ventures Ltd | \$125,000 | 01 - Opportunity Identified |
| <i>Brighthouse Station - Fairborne Homes</i> | | City Centre | 6180 and 6280 and 6300 No. 3 Road | | | Fairborne Homes | \$160,000 | 01 - Opportunity Identified |
| <i>Camino</i> | | City Centre | 8080 - 8088 Westminster Highway | Jinhan Ko, Vancouver | Mural | Minglian Holdings Ltd. | \$168,784 | 07 - Contracting |
| <i>Clarry Enterprises 12 story mixed use</i> | | City Centre | 6020 No. 3 Rd | | | | | 00 - Development Applications Review |
| <i>Concord 9099 Cook Road Residential - Concord Pacific Developments Inc. 9099 Cook Road Residential</i> | | City Centre | 9099 Cook Road | | | Concord Pacific Developments Inc. | | 01 - Opportunity Identified |
| <i>Concord Gardens</i> | | City Centre | 3240, 3260, 3280, 3320, 3340 Sexsmith Road and 8800, 8820, 8840, 8880, 8900, 8920, 8940, 8960 Dufferin Road | | | Concord Pacific Developments Inc. | | 01 - Opportunity Identified |
| <i>Cooney, MacLean Homes</i> | | City Centre | 6800/20 Cooney Rd and 6591, 6611 Eckersley Rd | | | Madcan Homes | \$30,957 | 01 - Opportunity Identified |
| <i>East-West Promenade - River Green Village (ASPAC)</i> | | City Centre | 6031 River Road | Nancy Chew, Vancouver Jacqueline Melz, Vancouver | | ASPAC | \$125,000 | 02 - Project Planning |
| <i>Fish Trap Way - River Green Village (ASPAC)</i> | | City Centre | | Thomas Cannell, Vancouver Susan A. Point, Vancouver | | ASPAC | \$157,000 | 03 - Public Art Plan to Committee/Council |



Richmond Public Art Program Annual Report

Projects Underway 2012

Total Number of Projects: 59

Report Total: \$4,318,146

| Artwork/Project | Installed | Planning Area | Address | Artist(s) | Type | Funding Source | Budget | Status |
|--|-----------|---------------|--|---|-------------------|--|-----------|--------------------------------------|
| <i>Made In China</i> - Prado Development Project | | City Centre | 8180 Lansdowne Road | Nancy Chew, Vancouver Jacqueline Metz, Vancouver | | Appia Group of Companies | \$85,000 | 02 - Project Planning |
| <i>Onni - 7731-7771 Alderbridge Way</i> | | City Centre | 7731, 7771 Alderbridge Way | | | 7731 & 7771 Alderbridge Holdings Corp (Onni) (Yamamoto Architecture) | | 00 - Development Applications Review |
| <i>Onni 6951 Elmbridge Way</i> - Ora - Onni Contracting Ltd. | | City Centre | 6951 Elmbridge Way | | | Onni Contracting Ltd. | \$178,755 | 01 - Opportunity Identified |
| <i>Pinnacle @ Capstan Way RZ 10-544729</i> - Pinnacle International (Richmond) Plaza Inc | | City Centre | 3411 and 3391 Sexsmith Road | | | Pinnacle International (Richmond) Plaza Inc | | 01 - Opportunity Identified |
| <i>Polygon Mueller Towers</i> | | City Centre | 8331, 8351 and 8371 Cambie Road & 3651 Sexsmith Rd | | | Polygon Development 192 Ltd. | | 00 - Development Applications Review |
| <i>Quintet</i> - Canada Sunrise Development Corp. | | City Centre | 5931/5891 No. 3 Rd. and 5900 Minoru Blvd. | | | Canada Sunrise Development Corp. | \$337,243 | 02 - Project Planning |
| <i>Ribbon</i> - Centro Parkside Development Ltd. | Feb/2012 | City Centre | 9651 Alberta Road | Toby Colquhoun, Vancouver Khalil Jamal, Richmond | Landscape Feature | Centro Development Ltd. | \$15,000 | 10 - Installation |
| <i>Rize Alliance No. 3 Rd and Bennett R.</i> - Rize Alliance No. 3 Rd and Bennett R. | | City Centre | 7180, 7186, 7120 No. 3 Rd 8031 Bennett Rd | | | Rize Alliance Properties Ltd. | | 00 - Development Applications Review |
| <i>Saffron Drift</i> - Saffron - 8600 Park Road - Ledingham McAllister | | City Centre | 8600 Park Road | Nancy Chew, Vancouver Jacqueline Metz, Vancouver | Landscape Feature | Ledingham McAllister Properties Ltd. | \$150,000 | 08 - Fabrication |
| <i>12351 No. 2 Rd Townhomes</i> | | Steveston | 12351 No. 2 Rd | | | Interface Architecture Inc | \$34,250 | 00 - Development Applications Review |
| <i>Oris Development Corp (Cornerstone Architecture)</i> Bayview St. | | Steveston | 3531 Bayview St | | | Oris Development Corp. | | 01 - Opportunity Identified |



Richmond Public Art Program

Financial Summary

Public Art Projects Completed in 2011

| 2011 Programs | No. of Projects | Costs | Funding Source |
|-----------------|-----------------|------------------|--------------------------------|
| Civic | 10 | \$202,000 | City, VANOC, Private |
| Community | 3 | \$80,000 | Public Art Reserve |
| Unique Projects | 4 | \$15,750 | Private and Public Art Reserve |
| Totals | 17 | \$297,750 | Private, City, VANOC |

Public Art Projects Underway in 2012

| 2012 Programs | No. of Projects | Costs | Funding Source |
|---------------------|-----------------|--------------------|----------------------|
| Civic | 13 | \$826,229 | City, Private, VANOC |
| Community | 5 | \$60,000 | Public Art Reserve |
| Donations | 2 | \$50,000 | Private |
| Private Development | 39 | \$3,381,917 | Private |
| Totals | 59 | \$4,318,146 | City, Private |

Public Art Reserve 2011 Summary

| Public Art Reserve Funding | Amount | Balance |
|---|-------------|------------------|
| Public Art Reserve balance December 31, 2010 | | \$851,140 |
| • Private development contributions to reserve 2011 | \$285,102 | |
| • Interest 2011 | \$99,094 | |
| • Approved Capital Projects Budget 2011 for Community Programs | (\$100,000) | |
| • Approved Capital Projects Budget 2011 for Private Development Program | (\$249,477) | |
| • Return funds from inactive Capital Projects | \$2,850 | |
| Public Art Reserve balance December 31, 2011 (unaudited) | | \$888,709 |



City of Richmond

6911 No. 3 Road, Richmond, BC V6Y 2C1

Tel. 604-276-4000

www.richmond.ca

RICHMOND PUBLIC ART ADVISORY COMMITTEE 2012 WORK PLAN

| Projects | 2012 Calendar | | | | | | | | | | | | Budget |
|--|---|---|---|---|---|---|---|---|---|---|---|---|--------------------------------|
| | J | F | M | A | M | J | J | A | S | O | N | D | |
| Planning & Policy | | | | | | | | | | | | | |
| • Research Best Practices | Ongoing | | | | | | | | | | | | |
| • Conservation & Maintenance Strategy | | X | X | X | X | X | X | | | | | | 2011 Public Art Capital Budget |
| • West Richmond Dyke Public Art Plan | | | | X | X | X | X | | | | | | 2012 Public Art Capital Budget |
| • Steveston Village Public Art Plan | | | X | | | | | | | X | X | | 2012 Public Art Capital Budget |
| • Direct Selection of Artists | | | | X | X | | | | | | | | |
| • Expand Community Program | | | X | X | X | X | | | | | | | |
| Public Art Program | | | | | | | | | | | | | |
| • Advise on Public Art Plan Proposals | Comments & Review as Required | | | | | | | | | | | | |
| • Advise on Terms of Reference for Artist Calls | Comments & Review as Required | | | | | | | | | | | | |
| • Advise on Selection Panels | Propose panellists | | | | | | | | | | | | |
| • Represent RPAAC on Advisory Design Panel | Report and advise on current planning proposals | | | | | | | | | | | | |
| Advocacy & Promotion | | | | | | | | | | | | | |
| • Art Walks | | | X | X | X | | | | X | | | | |
| • Promotion Campaign (posters, postcards, ads) | | X | X | | | | | | | | | | \$500 |
| • Outreach | Ongoing | | | | | | | | | | | | |
| • Culture Days, Sept | | | | | | | X | X | X | | | | |
| • Doors Open, May | | | X | X | X | | | | | | | | \$500 |
| Education & Training for RPAAC Members | | | | | | | | | | | | | |
| • Conferences (TBD) | | | | | | | | | | | | | \$300 |
| • Annual Public Art Tour | | | | X | | | | | | | | | \$200 |
| • Lulu Series - Attend | | | X | X | X | | | | | | | | |
| • RAG Openings | | X | | X | | X | | | X | | X | | |
| • Public Art Walks | Self-guided | | | | | | | | | | | | |
| Public Art Advisory Committee Meetings | | | | | | | | | | | | | |
| • Attend Meetings | X | X | X | X | X | X | X | | X | X | X | X | \$500 |
| • 2012 Annual Report | | | | | | | | | | X | X | | |
| • 2013 Annual Work Plan | | | | | | | | | | X | X | | |
| Totals | | | | | | | | | | | | | \$2,000 |
| Prepared by the Richmond Public Art Advisory Committee Note: May change subject to Work Plan Priorities | | | | | | | | | | | | | |