



City of Richmond

Report to Committee

To: Parks, Recreation and Cultural Services Committee **Date:** February 16, 2011
From: Dave Semple
General Manager, Parks and Recreation **File:** 06-2345-01/2011-Vol
01
Re: Pre-School Playground Update

Staff Recommendation

That the attached report, Pre-School Playground Update, from the General Manager, Parks and Recreation, be received for information.

Dave Semple
General Manager, Parks and Recreation

Att. 5

FOR ORIGINATING DEPARTMENT USE ONLY		
CONCURRENCE OF GENERAL MANAGER		
REVIEWED BY TAG	YES	NO
	<input checked="" type="checkbox"/>	<input type="checkbox"/>
REVIEWED BY CAO	YES	NO
	<input checked="" type="checkbox"/>	<input type="checkbox"/>

Staff Report

Origin

Staff submitted a report regarding pre-school playground areas for information to the June 29, 2010 Parks, Recreation and Cultural Services Committee meeting. The report described the approach to providing play opportunities for pre-school aged children and the projects identified for upgraded equipment in the City Centre. In addition, the report outlined the City's approach to working with the Richmond School District No. 38 to upgrade and develop playgrounds.

This report has been prepared in response to direction from the PRCS Committee regarding the provision of pre-school age playground equipment in parks in the City Centre.

Analysis

Background

The City of Richmond is striving to build playgrounds that include a broad range of types of play and provide fun and enjoyment for the different age groups of children. This includes not only traditional, structured play equipment, but also a surrounding environment that features elements of unpredictability, loose materials, and interaction with nature. This approach has been developed most fully at the Garden City Community Park Play Environment, completed in Spring 2008. Designed with input from students of Anderson Elementary School, including a kindergarten class, the reviews and comments received from the public have been overwhelmingly positive.

The provision of pre-school age playground opportunities is an important component of the overall playground program. Existing locations of these facilities at City owned sites are listed and shown in Attachments 1 – 4. This inventory does not include playgrounds owned and maintained by Richmond School District No. 38 or playgrounds associated with pre-school and daycare programs operated by others and not available for public use.

While most playground projects are initiated through the Unsafe Playground Equipment Replacement program, new parks and major park retrofits and partnerships with the community present opportunities to develop or enhance playgrounds.

The current Unsafe Playground Equipment Replacement Capital program is funded through General Revenue which averages \$100,000 per year. This funding is sufficient to replace only one full size playground or two tot lots per annum.

Projects included in the current Capital Program (up to 2011):

Unsafe Playground Equipment Replacement:

The 2011 Capital Plan includes a submission of \$200,000 for Unsafe Playground Equipment Replacement. Replacements are prioritized based on a safety audit conducted for the City by a third party and by ongoing monitoring by Parks Operations staff (Attachment 5). The

playgrounds currently with the highest priority are the Nature Park and the tot structures at Dixon School Park and Blundell School Park.

Other Projects:**Paulik Neighbourhood Park:**

Tot swings will be added to the playground this Spring at the same time as the community gardens are under construction. Both projects are funded by the existing Paulik Park capital project.

Minoru Park:

Tot swings are scheduled to be added to the playground. The existing playground equipment is regularly evaluated and is not currently identified for replacement. An opportunity to partner with a Richmond based Rotary Club however, has been identified, and a fundraising campaign is to be initiated later on this year. The project is tentatively scheduled for completion in 2012.

Cook School Park:

The City purchased a key property in December 2010 on Eckersley Road and will be working with the City Centre Community Centre Association, the school PAC and School Administration to develop a plan for amenities for the park including pre-school playground equipment including tot swings. The project will be funded through 2011 Park Characterization Capital program.

Terra Nova Rural Park:

A playground is planned for the north end of the park and will be funded through the existing capital project. This playground will be suitable for a broad range of users and recognizes the regional destination status of the park. The playground and associated amenities will be designed and submitted for Council's consideration in the fall of 2011, for construction in 2012.

Impact of Full Day Kindergarten

The City of Richmond and Richmond School District No. 38 staff have begun to develop an approach to address the impact of full day kindergarten. While the shift to full day kindergarten does not necessarily mean there will be additional children at those schools, it does mean that kindergarten children's use of the existing playground equipment will overlap with the usage times of the older children. The City and the School District will be preparing an inventory of all the affected school sites in order to develop a funding and implementation plan.

Currently, the Richmond School District does not have funding to invest in additional playground equipment but they do support the school Parent Advisory Committee (PAC) groups in providing site preparation for PAC funded playground projects. The City also works with PAC groups in the implementation of the annual Unsafe Playground Replacement program.

Projects undertaken at school park sites under the program are intended to address both the needs of the school population and the neighbourhood and so pre-school play elements are included.

Future planning for pre-school playgrounds

Improvements to the General Currie School tot lot will be part of the 2012 Unsafe Playground Equipment Capital program.

A priority list, along with funding and implantation strategies for our city-wide playgrounds without pre-school equipment, is being developed in consultation with staff from Richmond School District No. 38. The Richmond School District No. 38 has received limited funding to date for the implementation of all day kindergarten..

Financial Impact

There are no financial implications associated with this information report.

Conclusion

Several pre-school playground projects will be implemented in 2011 with a strong focus on playgrounds in the City Centre. Tot swings are proposed for three City Centre parks and pre-school aged playground equipment will be incorporated in another four parks. Planning for future pre-school oriented playground projects will be outlined in the upcoming 2011 Parks and Open Space Strategy for Council's consideration.



Jamie Esko
Park Planner, Parks Planning and Design
(604-233-3341)



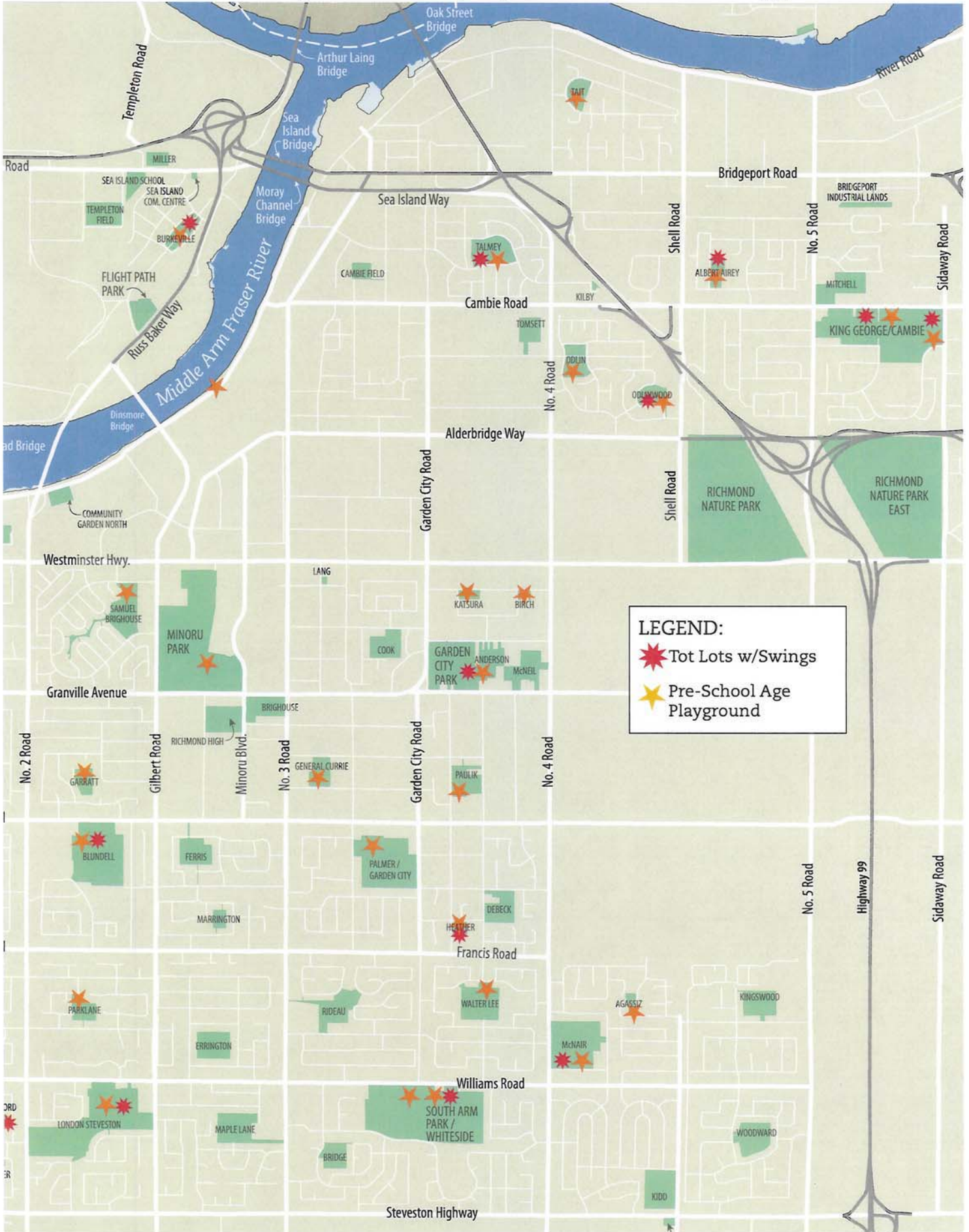
Clarence Sihoe
Park Planner, Parks Planning and Design
(604-233-3311)

Current Inventory of Pre-School Playground Facilities - City Owned Sites

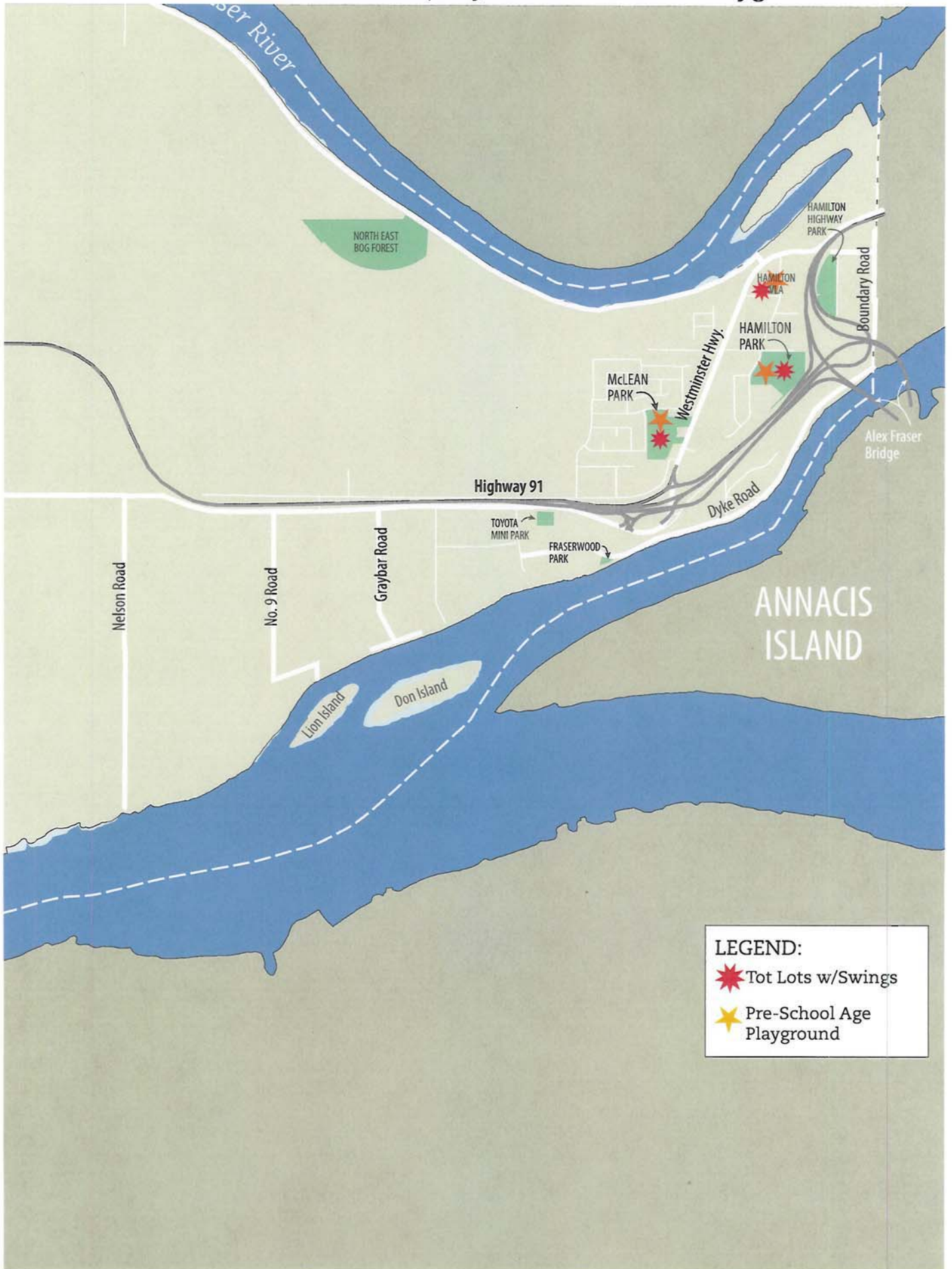
Playground Location	Planning Area	Pre-School Equipment	Tot Swings
Agassiz Park	Shellmont	x	
Albert Airey Park	East Cambie	x	x
Birch Park	City Centre	x	
Blundell School/Park	Broadmoor	x	x
Brighthouse School	Thompson	x	
Burkeville Park	Sea Island	x	x
Dover Park	Thompson	x	x
Dixon School/Park	Seafair	x	
Garden City Park	City Centre	x	x
Garden City School	Broadmoor	x	
Garrett Wellness Centre	Broadmoor	x	
General Currie School/Park	City Centre	x	
Gilmore School/Park	Seafair	x	x
Hamilton School/Park	Hamilton	x	x
Hamilton V.L.A. Park Smith Road E. Richmond	Hamilton	x	x
Heather/Dolphin Park	Broadmoor	x	x
Hugh Boyd School/Park - West Rich. Rec. Centre	Seafair	x	x
Jesse Wowk School/Park	Blundell	x	
Kartner/Fedoruk Park	East Richmond		
Katsura Park	City Centre	x	
King George Water Park Area	East Cambie	x	x
London/Steveston High - Goldsmith Drive	Blundell	x	x
McCallan Road R.O.W. Park	Thompson	x	x
McKay School/Park	Blundell	x	
McLean / McRae Park	Hamilton	x	x
McNair School/Park	Shellmont	x	x
McNeely School (King George Park)	East Cambie	x	x
Minoru Play Area	City Centre	x	
Morris Park	Seafair	x	x
Nature Park West	East Cambie		
No 7 Road Pier	East Richmond		
Odlin Park	West Cambie	x	
Odlinwood Park	West Cambie	x	x
Park Lane Park	Blundell	x	
Paulik Park	City Centre	x	
Richmond St. Park	Steveston	x	
Sandiford Park	Steveston	x	x

South Arm Park N/W of Pool	Broadmoor	x	x
South Arm Tot Lot	Broadmoor	x	
South Cove Park	Steveston	x	
Steveston Park - West Side of Community Centre	Steveston	x	x
Steveston Park Tot Lot	Steveston		
Tait School/Park	Bridgeport	x	
Talmey School/Park	West Cambie	x	x
Terra Nova Park	Thompson	x	x
Terra Nova South Park	Thompson	x	x
Thompson Comm. Centre - South Side of Parking Lot	Thompson	x	
Thompson Comm. Centre Tot Lot	Thompson	x	x
Thompson School Tot Lot	Thompson	x	
UBC Boathouse	City Centre	x	
Walter Lee School/Park	Broadmoor	x	
Westwind School	Steveston	x	

Attachment 2 - City Centre Area | City Owned Preschool Playground Facilities



Attachment 4 - East Richmond | City Owned Preschool Playground Facilities



Playground Replacement Program - 2011 Update

Playground Location	Replacement Date	Installation Date	Hazard Rating
Ferris School/Park Tot Lot (future equipment to serve Ferris and Marrington)		1988	equipment removed in 2003
Nature Park West**	2011 proposed	1994	28
Richmond Street Park		1991	27
McNeely School - King George Park		1996	18
McCallan Road R.O.W. Park			15
Dixon School/Park (tot structure)**	2011 proposed	1991	14
Blundell School/Park Tot Lot**	2011 proposed		equipment removed in 2010
Kartner/Fedoruk Park		1992	12
McLean/McRae Park		1999	12 (surfacing replaced 2008 reduced hazards)
Odlin Park		1995	10
Hamilton School/Park		1997	43 (repairs have reduced hazards)
Jesse Wowk School/Park		1993	6
Terra Nova School/Park		1996	6
Talmey School/Park		1994	5
Terra Nova South Park		1997	3
Dover Park		1997	3
Garden City School/Park N Side		1994	3
Gibbons Park (Swing Set)		1989	3
Gilmore School/Park			3
Garden City School/Park W Side		1994	0
Minoru Play Area		1998	0
Odlinwood Park		1998	0
South Cove Park (Great West Cannery Park)		1997	0
No. 7 Road Pier			0
Walter Lee School/Park	2010	1991	0
McKay School/Park	2010	1993	0
Westwind School	2009		0
Hugh Boyd School/Park WRCC	2009	1997	21 (replacements have reduced hazards)
Summary of Replacements			
Garden City Park Play Environment		2008	0
General Currie School/Park	2008		0
McNair School/Park	2006		0
King George Park - Water Park Area	2006		0
Paulik Gardens		2005	
Morris Park	2005		0
South Arm N/W of Pool - Large Structure	2005		0
Thompson Comm. Centre - Tot Lot Lynas Lane	2005		0
Katsura Park		2004	0
Birch Park		2004	0
Brighthouse School	2004		0
Sandiford Park	2004		0
Tait School Park	2004		0
Burkeville Park	2003		0

Playground Location	Replacement Date	Installation Date	Hazard Rating
Heather /Dolphin Park	2003		0
Steveston Park - West Side of Comm Ctr.	2003		0
London/Steveston - Goldsmith Dr	2003		0
Agassiz Park	2002		0
Albert Airey Park	2002		0
Hamilton V.L.A. Park - Smith Road, E. Rmd	2002		0
Thompson School Tot Lot	2002		0
Thompson Comm. Centre	2001		0
South Arm N/W of Pool - Pre-school	2000		0
Park Lane Park		2000	0