



**STEVESTON FIRE HALL**  
RICHMOND, BRITISH COLUMBIA

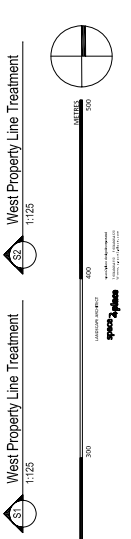
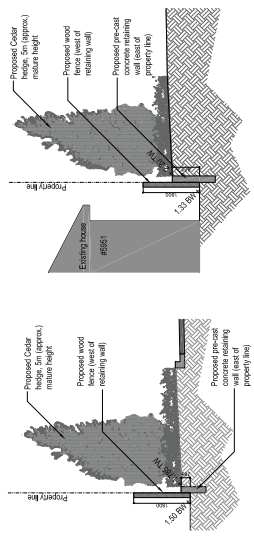
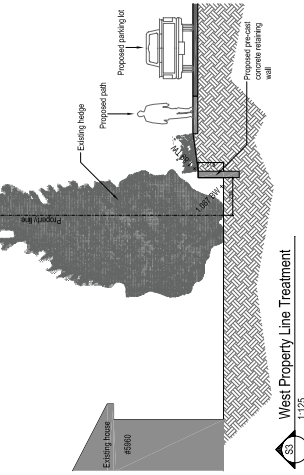
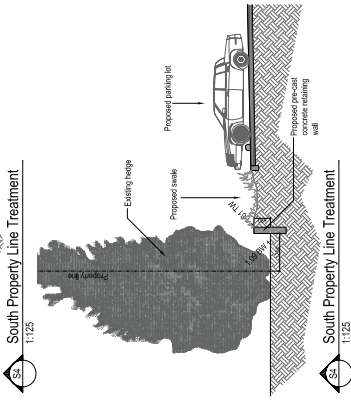
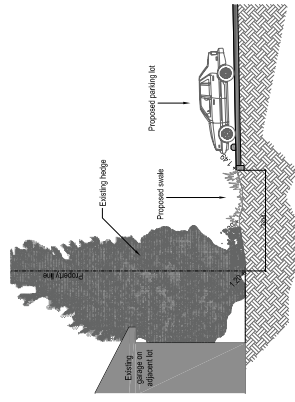
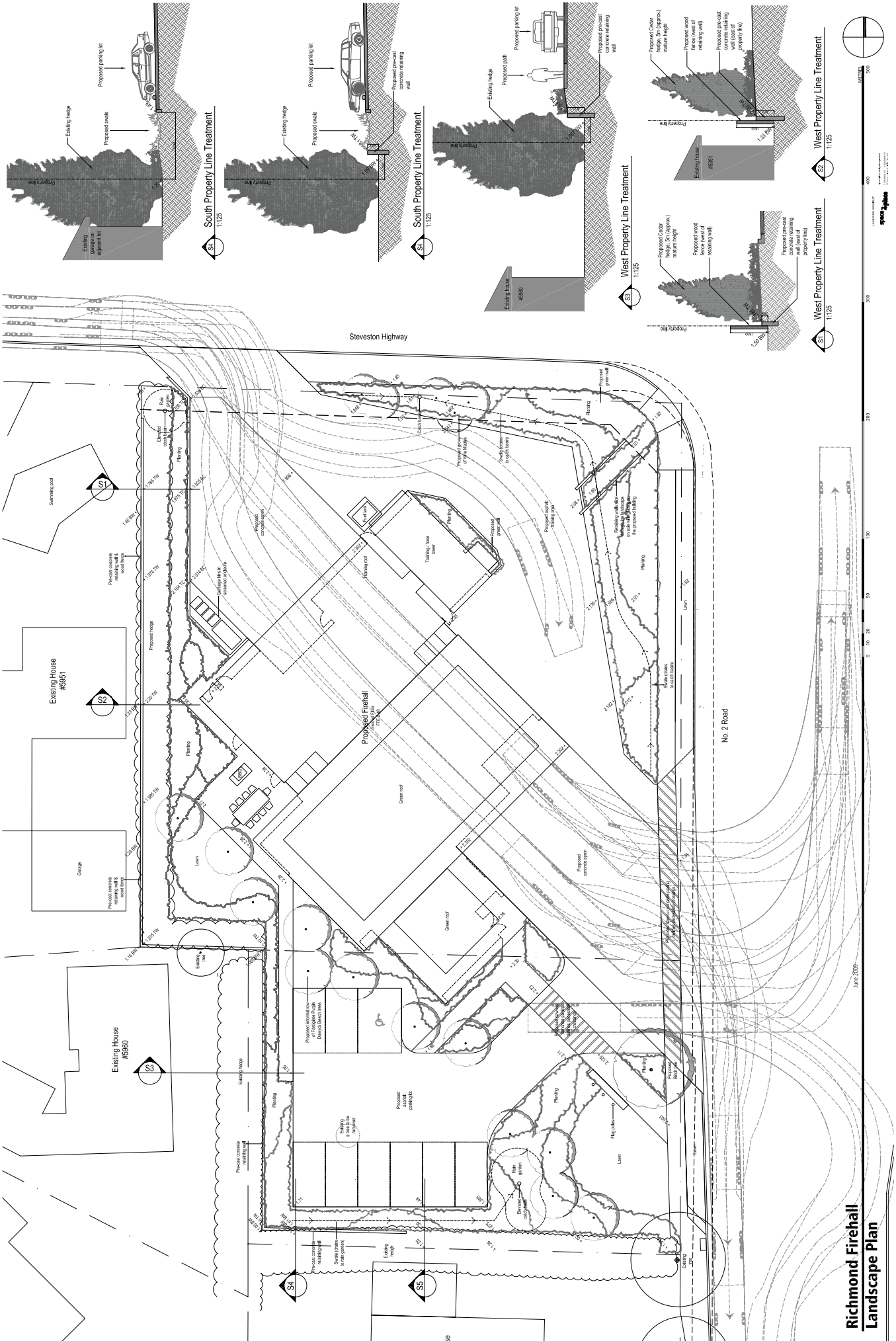
07 | RENDERING

**ADVISORY DESIGN PANEL**

21 MAY 2009

Hughes Condon Marler : Architects

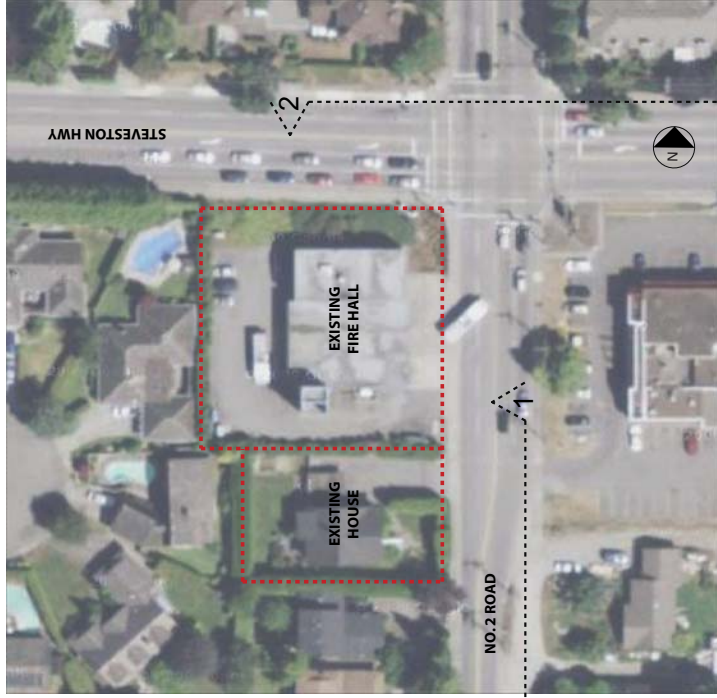




**Richmond Firehall  
Landscape Plan**

June 2009

EXISTING SITE  
AERIAL PHOTO



STEVESTON AREA  
AERIAL PHOTO



2] STREET ELEVATION FROM STEVESTON HIGHWAY



1] STREET ELEVATION FROM NO. 2 ROAD

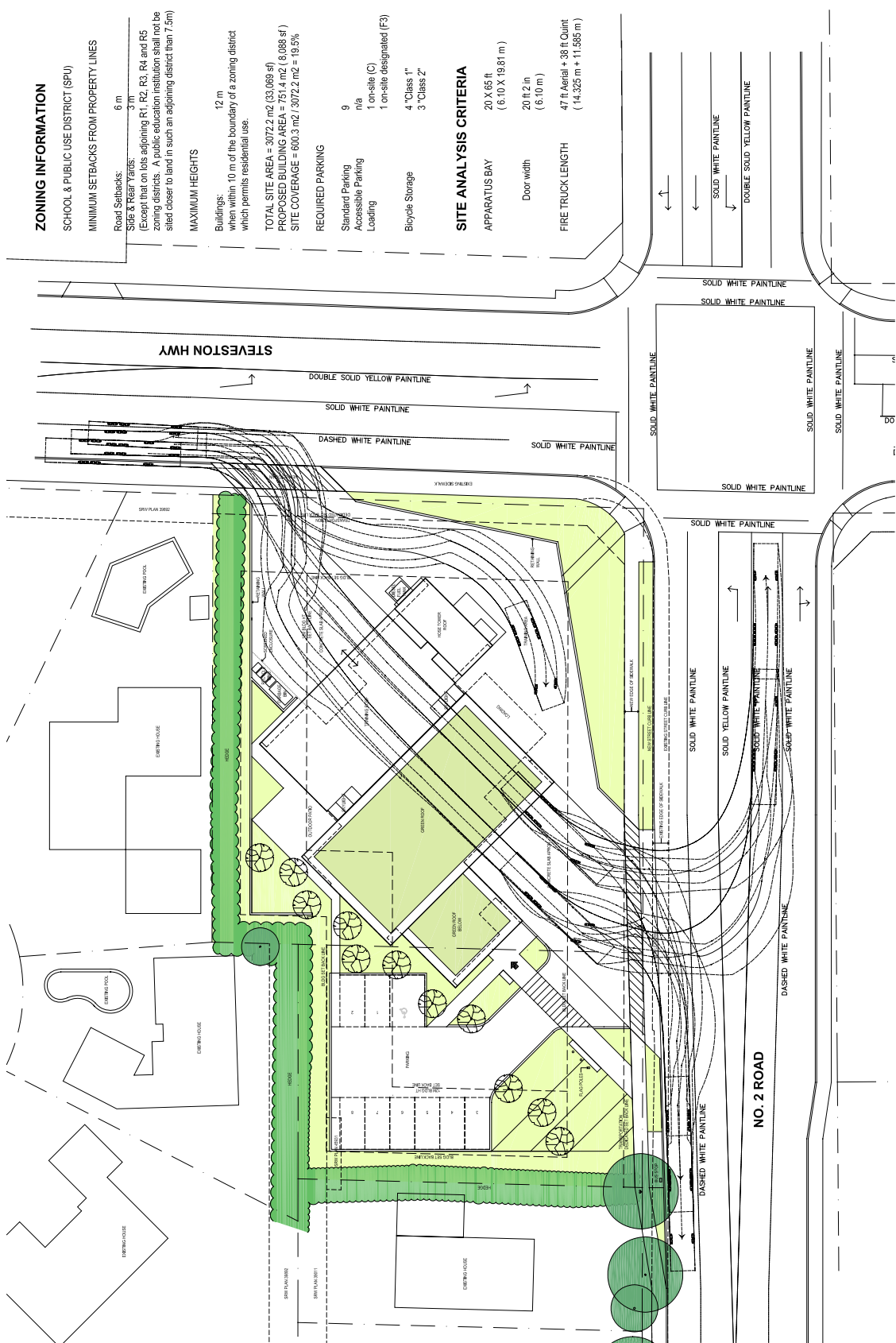
# STEVESTON FIRE HALL

RICHMOND, BRITISH COLUMBIA

## 01 | EXISTING CONDITIONS

ADVISORY DESIGN PANEL  
21 MAY 2009

Hughes Condon Marler : Architects



**ZONING INFORMATION**

SCHOOL & PUBLIC USE DISTRICT (SPU)

MINIMUM SETBACKS FROM PROPERTY LINES

Road Setbacks: 6 m

Side & Rear Yards: 3 m

(Except that on lots adjoining R1, R2, R3, R4 and R5 zoning districts. A public education institution shall not be sited closer to land in such an adjoining district than 7.5m)

**MAXIMUM HEIGHTS**

Buildings: 12 m when within 10 m of the boundary of a zoning district which permits residential use.

TOTAL SITE AREA = 3072.2 m<sup>2</sup> (33,069 sf)

PROPOSED BUILDING AREA = 751.4 m<sup>2</sup> (8,088 sf)

SITE COVERAGE = 600.3 m<sup>2</sup> / 3072.2 m<sup>2</sup> = 19.5%

**REQUIRED PARKING**

Standard Parking 9

Accessible Parking n/a

Loading 1 on-site (C)

Bicycle Storage 4 "Class 1"

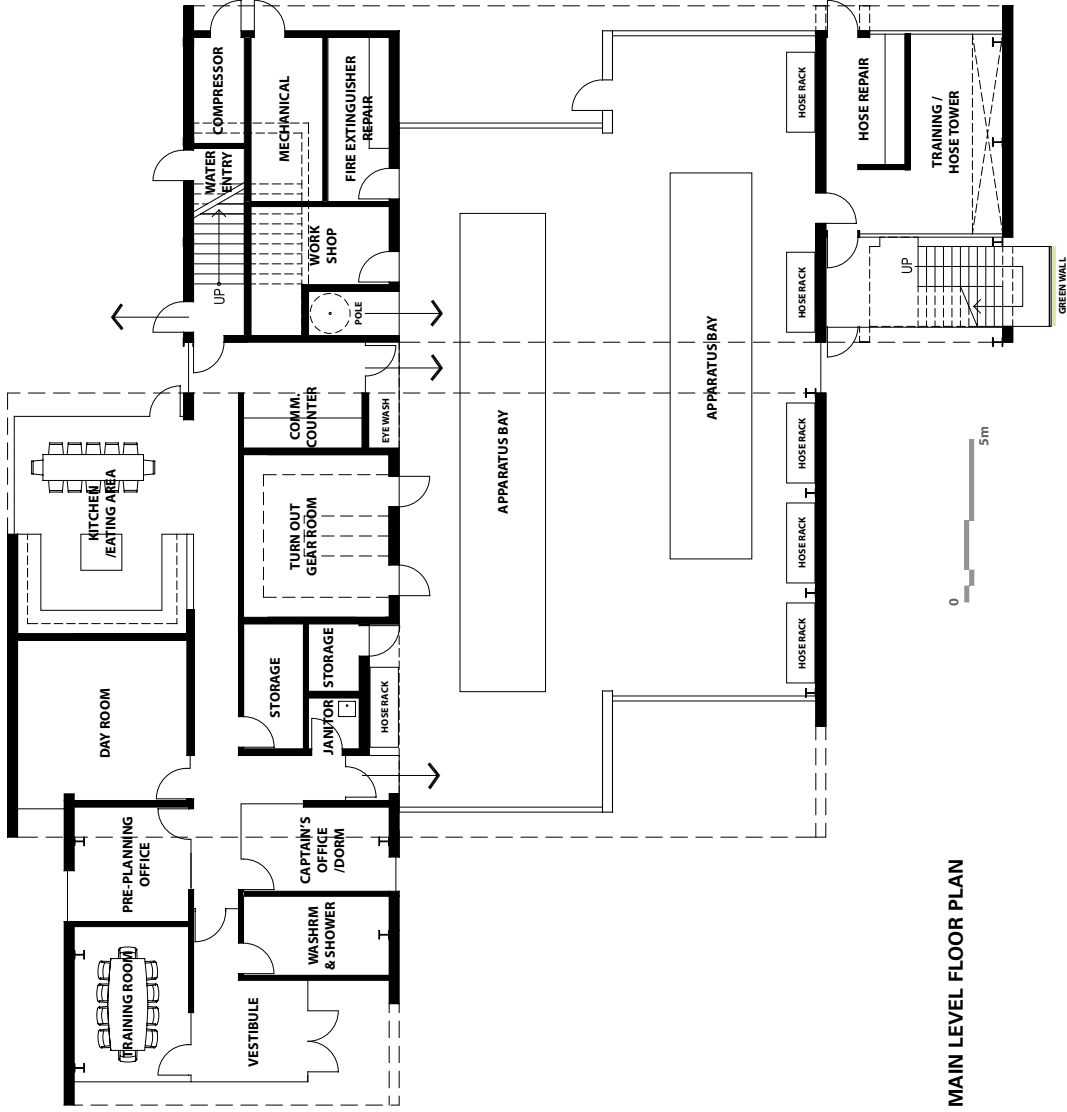
3 "Class 2"

**SITE ANALYSIS CRITERIA**

APPARATUS BAY 20 X 65 ft (6.10 X 19.81 m)

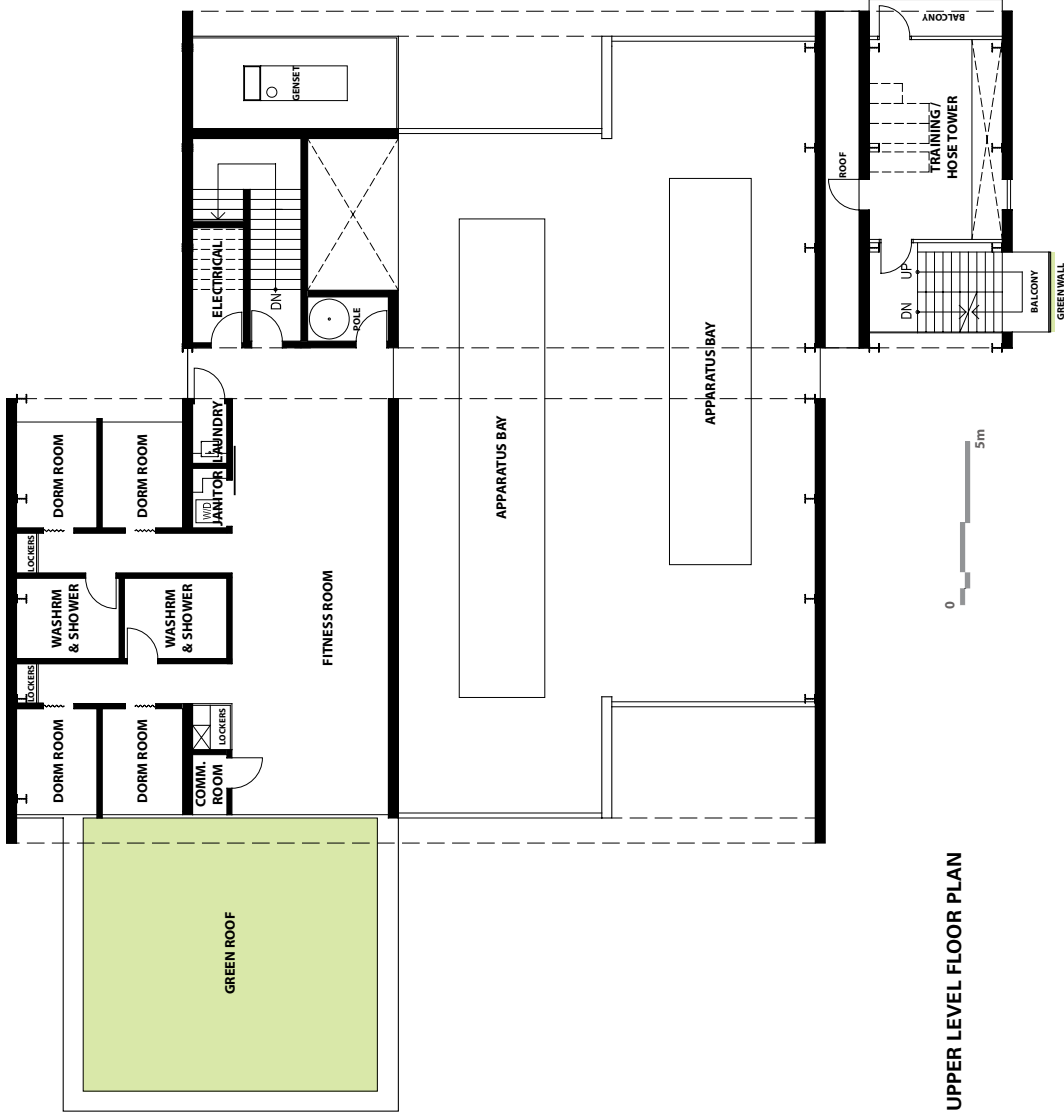
Door width 20 ft 2 in (6.10 m)

FIRE TRUCK LENGTH 47 ft Aerial + 38 ft Quint (14.325 m + 11.585 m)

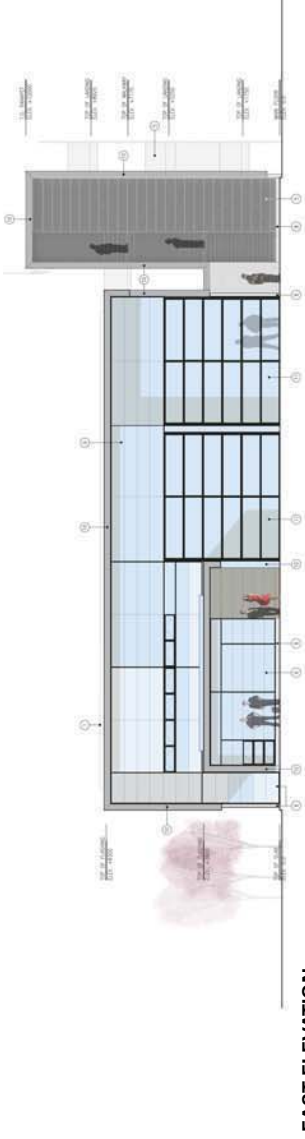


MAIN LEVEL FLOOR PLAN

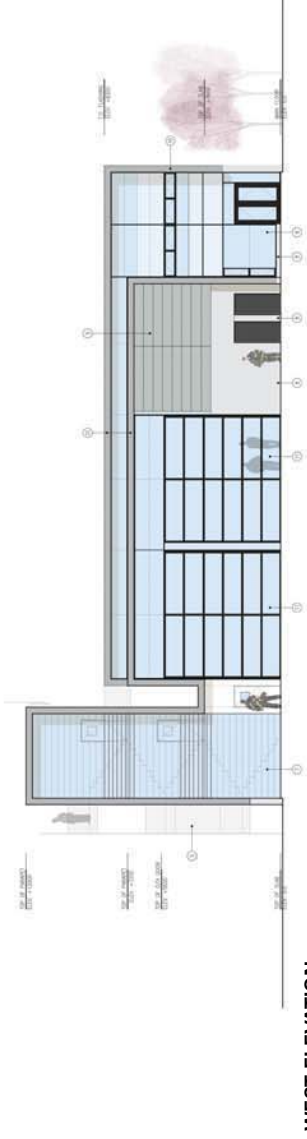




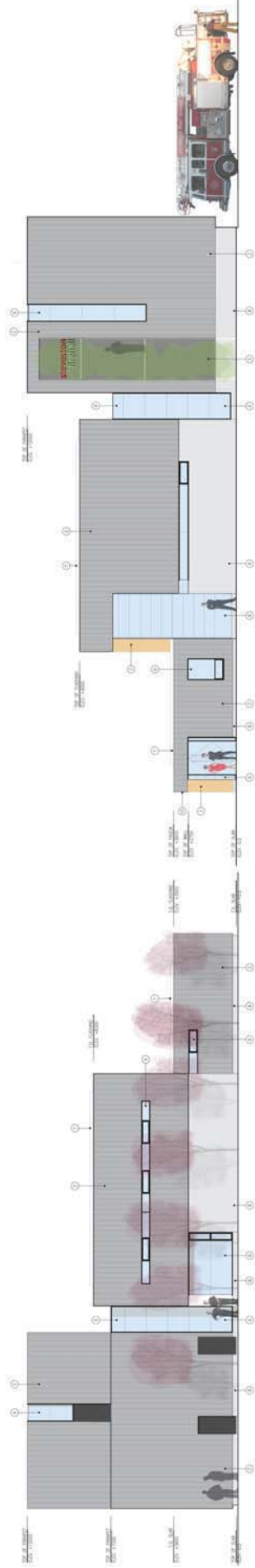
UPPER LEVEL FLOOR PLAN



EAST ELEVATION



WEST ELEVATION



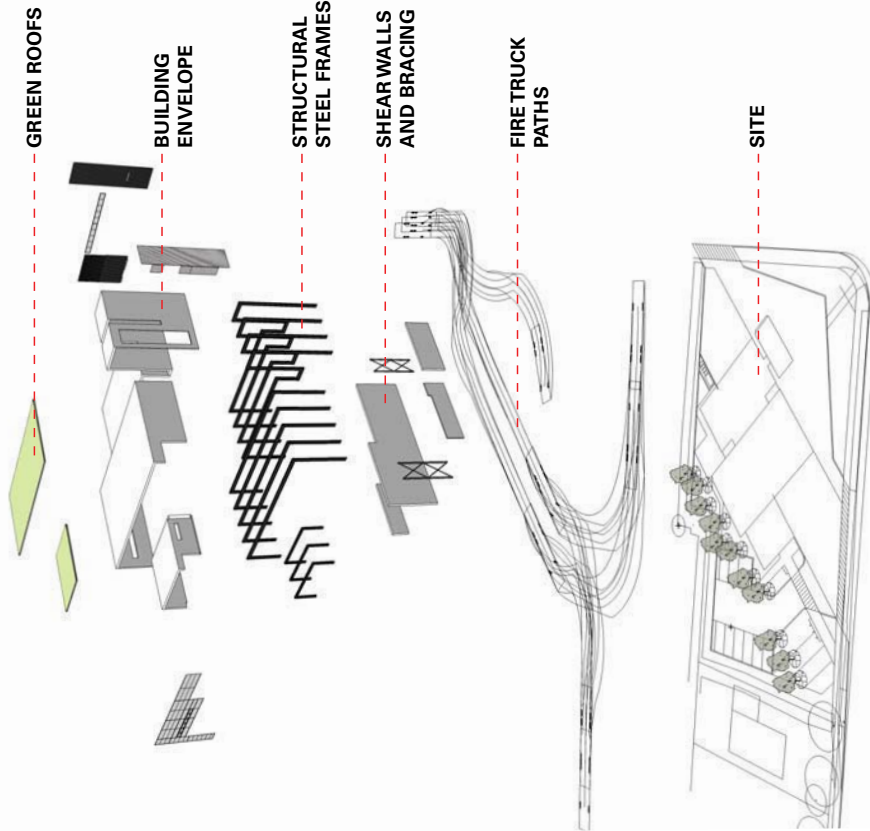
SOUTH ELEVATION

NORTH ELEVATION

**MATERIALS**

- 1 GREEN ROOF SYSTEM
- 2 ZINC CLADDING
- 3 EXPOSED WOOD DECKING
- 4 PAINTED STRUCTURAL STEEL FRAME
- 5 GLAZI/ANIZED STEEL GRATE
- 6 INSULATED GLAZING UNITS
- 7 CHANNEL GLASS
- 8 CAST IN PLACE CONCRETE
- 9 ASPHALT PAVING
- 10 PAINTED C-CHANNEL
- 11 OVERHEAD DOORS

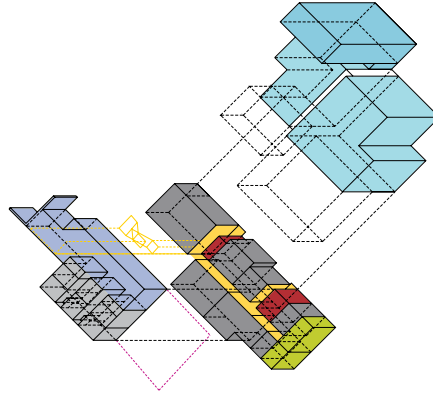
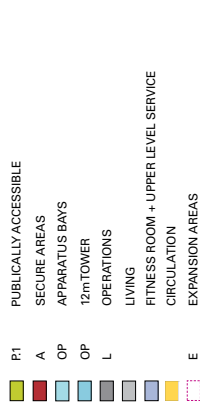
**BUILDING ELEMENTS**



**BRITANNIA HERITAGE SHIPYARD IMAGES**



**FACILITY PROGRAM + ADJACENCY DIAGRAM**







1 | GREEN ROOF SYSTEM



2 | ZINC CLADDING



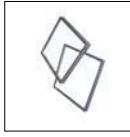
3 | EXP-WOOD DECKING



4 | STEEL STRUCTURE



5 | STEEL GRATE



6 | INSULATED GLASS



7 | CHANNEL GLASS

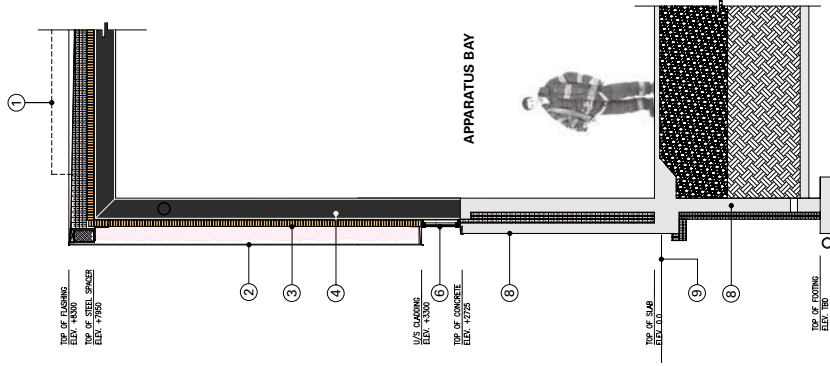


8 | C.I.P. CONCRETE

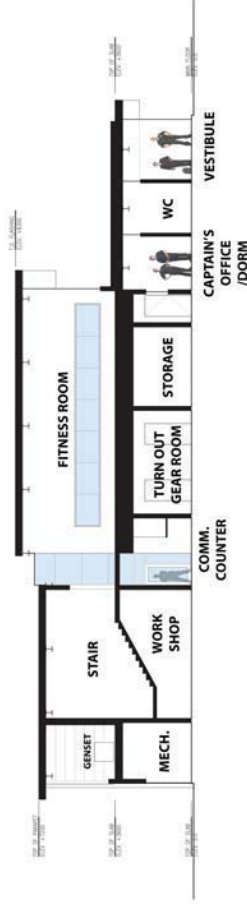


9 | ASPHALT PAVING

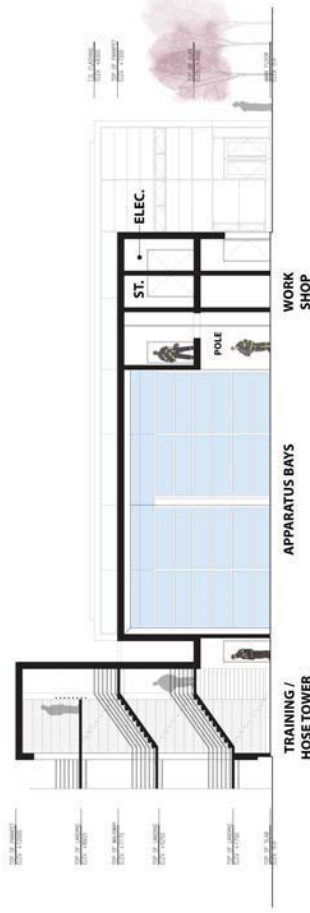
**MATERIALS**



**WALL SECTION**



**EAST / WEST BUILDING SECTION**



**NORTH / SOUTH BUILDING SECTION**



**STEVESTON FIRE HALL**  
 RICHMOND, BRITISH COLUMBIA

**10 | MATERIAL SAMPLE BOARD**

**ADVISORY DESIGN PANEL**  
 21 MAY 2009  
 Hughes Condon Marler : Architects

