



Parks, Recreation & Cultural Services Committee

Date: Tuesday, January 27, 2015

Place: Anderson Room
Richmond City Hall

Present: Councillor Harold Steves, Chair
Councillor Ken Johnston
Councillor Carol Day
Councillor Bill McNulty
Councillor Linda McPhail

Also Present: Councillor Alexa Loo (entered at 4:37 p.m.)

Call to Order: The Chair called the meeting to order at 4:00 p.m.

MINUTES

It was moved and seconded

That the minutes of the meeting of the Parks, Recreation and Cultural Services Committee held on Tuesday, November 25, 2014, be adopted as circulated.

CARRIED

NEXT COMMITTEE MEETING DATE

Tuesday, February 24, 2015, (tentative date) at 4:00 p.m. in the Anderson Room

PRESENTATION

With the aid of a PowerPoint presentation (copy on file, City Clerk's Office) Rich Kenny, Community Facilities Programmer, briefed Committee on the City's Geocaching program and highlighted the following:

Parks, Recreation & Cultural Services Committee
Tuesday, January 27, 2015

- geocaching is a high-tech treasure hunting game using Global Positioning System (GPS) devices to locate hidden containers;
- there are geocaching locations around the world;
- geocaching is for people of all ages;
- geocaching provided individuals the opportunity to explore different parts of the city;
- geocaching clues may be printed if a GPS device is not available;
- geocached items vary in size;
- geocache containers include a logbook for participants to record their finds;
- there are 30 themed geocaches and there have been approximately 5,000 cache logs recorded to date;
- a geocache passport (attached to and forming part of these minutes as Schedule 1) provides individuals with instructions and the ability to record the cache;
- once completed, individuals can return the geocache passport to the Richmond Nature Park to receive a Geo-Coin;
- there are 50 official GeoTours worldwide;
- the City's geocaching program has its own website and uses online advertising to promote the program; and
- a media release on the City's geocaching program was released to local television stations and newspapers.

Discussion ensued with regard to visitors from outside the city taking part in the geocaching program, and Mr. Kenny advised that the Geo-Coin can track visitor participation.

Discussion then ensued regarding advertising in publications targeting tourists, and in reply to queries from Committee, Mr. Kenny noted that staff will be examining the marketing strategy.

In reply to queries from Committee regarding the expansion of the geocache program, Mr. Kenny advised that there are limitations on the distance between each geocache, but approximately 10 to 15 additional caches can be added in the future.

Mr. Kenny advised that there is significant interest in the geocaching program, noting that 150 Geo-Coins were claimed in a three month period.

The Chair advised that Richmond Women's Resource Centre would be considered as Item No. 4.

COMMUNITY SERVICES DIVISION

1. **MARITIME VESSELS AT BRITANNIA**

(File Ref. No. 11-7140-20-BSH11) (REDMS No. 4475046 v. 7)

Discussion ensued with regard to the significance of the vessels to the community and options to place them on static display. Mike Redpath, Senior Manager, Parks, spoke of the restoration of the vessels and their historical significance, noting that they are living artefacts and attractions to the Steveston waterfront.

In reply to queries from Committee, Mr. Redpath spoke on the restoration of the Portage Queen as an example for static display and added that staff are seeking direction from Committee with regard to opportunities for the restoration and display of the historical vessels at the Britannia Heritage Shipyard.

The Chair spoke of the Britannia collection of historical vessels in the Steveston area and provided background information of their historical significance (attached to and forming part of these minutes as Schedule 2).

The Chair commented on the restoration and maintenance of the historical vessels and spoke in favour of retaining historically significant fishing boats, including the Iona, the Silver Anna and the Starliner, which represent different eras in boat design.

The Chair then spoke of the City's insufficient efforts to maintain the historical vessels and suggested that a breakdown on the cost of materials be identified and that the restoration of the Starliner be done by volunteers.

Discussion ensued with regard to the costs of restoring the historical maritime vessels, and the ownership records of said vessels.

Cllr. Loo entered the meeting (4:37 p.m.).

Staff were then directed to update the staff report to include documentation that would provide the City with proof of ownership of the maritime vessels.

Mr. Redpath advised that the maritime vessels were registered under the Britannia Heritage Shipyards Society (BHSS). BHSS has since made a motion to transfer ownership of the vessels to the City.

Discussion ensued with regard to the estimated costs of restoring the vessels and the availability of volunteers. In reply to queries from Committee, Mr. Redpath noted that volunteers from the BHSS is available, however the scope of the restoration project is too large.

Discussion then ensued regarding the storage of the vessels. It was noted that storing the vessels indoors would not affect deterioration.

Parks, Recreation & Cultural Services Committee
Tuesday, January 27, 2015

Dave Semple, General Manager, Community Services, advised that a skilled shipwright is required to fully restore and maintain the vessels. The Chair noted that a recommendation to acquire a shipwright for the Britannia site was previously submitted.

It was moved and seconded

That the staff report titled "Maritime Vessels at Britannia" dated January 19, 2015, from the Senior Manager, Parks be received for information.

CARRIED

2. STEVESTON COMMUNITY SOCIETY CONTRIBUTION TO STEVESTON COMMUNITY PARK PLAYGROUND RENEWAL

(File Ref. No. 06-2345-20-STEV2) (REDMS No. 4477952 v. 5)

Mr. Redpath provided background information, noting that the Steveston Community Society (SCS) is proposing a contribution of 50 per cent towards the costs of the playground, up to \$40,000.

In reply to queries from Committee, Mr. Redpath advised that the proposed upgrade will be advanced concurrently with other playground projects in the city, and noted that the proposed upgrade will be presented to Council through the five-year capital budget process.

Jamie Esko, Park Planner, advised that the planning and design process is estimated to cost approximately \$50,000, with the City's share of the cost totalling approximately \$25,000.

Discussion ensued with regard to (i) the planning and design process, (ii) receiving community support and input during the consultation phase, and (iii) upgrading other areas of the park.

Keith Whittle, representing the SCS, noted that the SCS has funds available to contribute to the proposed playground upgrade at Steveston Community Park that could include a small children's play area and make the playground universally accessible.

In reply to queries from Committee, Mr. Whittle noted that the SCS will participate in the consultation and planning process once preliminary plans are available.

Discussion ensued with regard to the estimated consultation costs related to the proposed playground upgrade and grants available to help offset said costs. Mr. Whittle noted that the SCS is examining fundraising options to help offset costs for the playground upgrade.

In reply to queries from Committee with regard to the tender for a consultant, Mr. Redpath noted that the consultation process could identify opportunities for grants; however the first stage would examine the concept and design and seek community engagement.

Parks, Recreation & Cultural Services Committee
Tuesday, January 27, 2015

It was moved and seconded

That staff commence a park planning process for the renewal of the playground in Steveston Community Park as outlined in the staff report titled "Steveston Community Society Contribution to Steveston Community Park Playground Renewal," dated January 9, 2015, from the Senior Manager, Parks.

CARRIED

3. 2013–2014 PARKS AND OPEN SPACE STRATEGY UPDATE

(File Ref. No. 06-2345-03) (REDMS No. 4473183 v. 3)

With the aid of a visual presentation (copy on file, City Clerk's Office) Mr. Redpath and Ms. Esko briefed Committee on the 2013-2014 Parks and Open Space Strategy Update.

Discussion ensued with regard to updates to the Garden City Lands (GCL) and Mr. Redpath noted that the GCL plans are currently underway with consideration of the 2015 capital budget, studies of perimeter lands and area hydrology, and community engagement.

In reply to queries from Committee, Mr. Redpath advised that staff are engaging with external agencies such as the Lower Mainland Bog Conservation Society and the Metro Vancouver Scientific Advisory Panel through the GCL planning process.

Discussion ensued with respect to engaging the Garden City Conservation Society during the GCL planning process.

In reply to queries from Committee, Mr. Redpath noted that he anticipates that portions of the trail in the GCL could open this year, subject to the community engagement process and hydrology design. Mr. Semple advised that due to the hydrological complexities in the bog, different design strategies will have to be employed in certain areas of the GCL.

Discussion ensued with regard to reusing the excavated soil from the trail design.

The Committee wished to express their gratitude to staff for their work on the City's Parks and Open Space Strategy.

Discussion took place regarding the proposed arrangement with Kwantlen Polytechnic University for a 20 acre parcel required for a farming program. Mr. Redpath advised that staff are preparing a report to present to Committee.

Discussion then ensued with regard to a viral video released by the City of Vancouver related to their urban agriculture initiatives.

As a result of the discussion, staff were directed to examine options to create a video that will highlight Richmond's urban agriculture initiatives.

Parks, Recreation & Cultural Services Committee
Tuesday, January 27, 2015

It was moved and seconded

That the staff report titled "2013–2014 Parks and Open Space Strategy Update" dated January 5, 2015, from the Senior Manager, Parks be received for information.

CARRIED

4. **RICHMOND WOMEN'S RESOURCE CENTRE**
(File Ref. No.)

Discussion ensued with respect to correspondence received from the Richmond Women's Resource Centre (copy on file, City Clerk's Office) regarding funding.

As a result of the discussion the following **referral** was introduced:

It was moved and seconded

That the staff examine options to respond to the letter from the Richmond Women's Resource Centre, dated January 15, 2015, and report back.

CARRIED

ADJOURNMENT

It was moved and seconded

That the meeting adjourn (5:15 p.m.).

CARRIED

Certified a true and correct copy of the Minutes of the meeting of the Parks, Recreation & Cultural Services Committee of the Council of the City of Richmond held on Tuesday, January 27, 2015.

Councillor Harold Steves
Chair

Evangel Biason
Auxiliary Committee Clerk



How to claim your Geo-Coin

Bring this completed passport to:

Richmond Nature Park, 11851 Westminster Hwy, Richmond, BC.
(9 a.m.-5 p.m., daily) Phone: 604-718-6188

If you can't come to the Richmond Nature Park scan and email
passport to geocaching@richmond.ca.

Name: _____

Street Address: _____

City: _____

Province/State: _____ Country: _____

Postal Code: _____ Email: _____

Geocaching.com — Username: _____

Term and Conditions

Geo-Quest geo-coins are awarded in the order they are received, while supplies last. Only one coin will be awarded per geocaching username per year. The City of Richmond reserves the right to limit or revoke this offer at any time. Additional terms and conditions may apply.

For staff use only

Geo-coin #: _____ Date: _____ Staff Initial: _____

Schedule 1 to the Minutes of the
Parks, Recreation & Cultural
Services Committee Meeting of
Tuesday, January 27, 2015.



PASSPORT

www.richmond.ca/geocaching



What is Geocaching?

A modern outdoor treasure hunt using a personal Smartphone or GPS device to locate hidden containers called "geocaches".

There are over 6 million geocachers worldwide and 2.2 million active geocaches!

What is the City of Richmond Geo-Quest?

A series of 30 hidden geocaches in parks, on trails, and at community facilities. Find all the caches, complete this passport and receive a prize!

Get Going!

1. Learn about geocaching and sign up for a free geocaching account at www.geocaching.com.
2. Use a GPS device and the clues provided on www.geocaching.com to search for Geo-Quest geocaches.
3. Record your finds online and in the geocache log books. Some geocaches will contain tradable objects. If you remove something from the cache, replace it with something of equal value.
4. Hide the geocache exactly where you found it and move on to the next one!
5. Collect the secret word from all 30 Geo-Quest geocaches and record them on this passport.
6. When complete, redeem this passport to claim a trackable City of Richmond geo-coin. See back page for details. *Limited to one coin per geocaching.com username while quantities last.
7. Share your experience with the geocaching community on www.geocaching.com.

Respect the flora and fauna. Please tread lightly!

Geo-Quest Cache Name

GC Code

Secret Word*

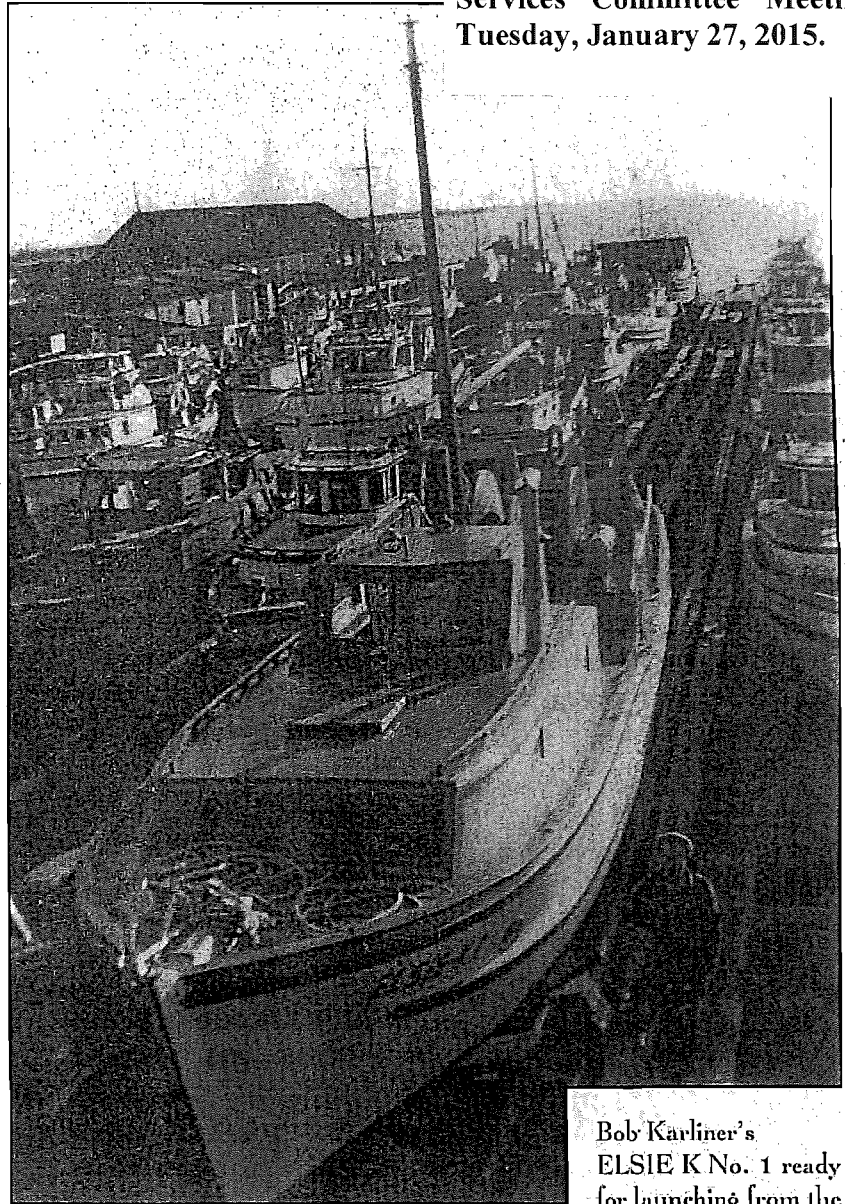
- | Geo-Quest Cache Name | GC Code | Secret Word* |
|---------------------------------|---------|--------------|
| 1. Island City | GC5DF1N | |
| 2. Pocket Forest | GC5DF1W | |
| 3. Monsters of the Deep! | GC5DF24 | |
| 4. Flighty Things | GC5DX2F | |
| 5. Gone Fishin' | GC5DF2G | |
| 6. Britannia Shipyards | GC5DX30 | |
| 7. Waterfront Wanderer | GC5DF2M | |
| 8. Southern Vista | GC5DGEF | |
| 9. Nature in Your Neighbourhood | GC5F7RA | |
| 10. Scotch Pond | GC5DGF9 | |
| 11. Grauer Lands | GC5DGF9 | |
| 12. Crabapple Ridge | GC5DGF9 | |
| 13. Who's Hooting? | GC5DGF9 | |
| 14. Railway Greenway | GC5DGF9 | |
| 15. The Heat is On! | GC5DGF9 | |
| 16. Dover Park | GC5DGF9 | |
| 17. Paulik Park | GC5DGF9 | |
| 18. Trees Galore | GC5DGF9 | |
| 19. Sister City | GC5DGF9 | |
| 20. The Chief's Treasure Box | GC5DGF9 | |
| 21. Mountain Vista | GC5DGF9 | |
| 22. Burkeville | GC5DGF9 | |
| 23. Cora Brown Trail | GC5DGF9 | |
| 24. A Hidden Slough | GC5DGF9 | |
| 25. The Hollow | GC5DGF9 | |
| 26. King George Park | GC5DGF9 | |
| 27. Why the Bridge? | GC5DGF9 | |
| 28. My Big Brother Rocks! | GC5DGF9 | |
| 29. Hemlock Guardian | GC5DGF9 | |
| 30. Bog vs. Blueberries | GC5DGF9 | |

*Record the secret word found in each cache.

In 1942, 1,337 boats were confiscated. The government authorized a committee to sell the confiscated boats to non-Japanese at "fair market prices". These boats included 860 gillnetters, 148 packers, 141 cod boats, 120 trollers and 68 seiners. Of these 887 were sold. J.H. Todd and Sons purchased 14 gillnetters ranging in cost from \$600 to \$1,500 during February and March of 1942. This company also purchased 9 seiners, including the HOWE SOUND III for \$12,500. The Board of Marine Underwriters of San Francisco estimated the replacement value of this boat at \$16,000. The sales agreements required the vendors to pay for any repairs that the purchasers deemed necessary to make the boats seaworthy and in good running order.

The Fraser River gillnetter developed rapidly after the Japanese evacuation. Fraser River fishermen were expanding into new salmon fishing grounds during the Second World War, and they needed larger, wider vessels with greater sea-worthiness and higher load capacities. Consider the vessels owned by Bob Karliner. He purchased the CHALLENGER, his third boat, from the Fishing Vessel Disposal Committee for \$750 in 1942. This boat was 31 feet 6 inches in length, 7 feet 6 inches in breadth and was powered with a 2-cylinder, 14 HP Palmer gasoline engine. In 1944 Karliner contracted the Lubzinski brothers to build his first new boat, the MODERN BEAUTY, for \$3,200. This gillnetter measured 33 feet in length, 8

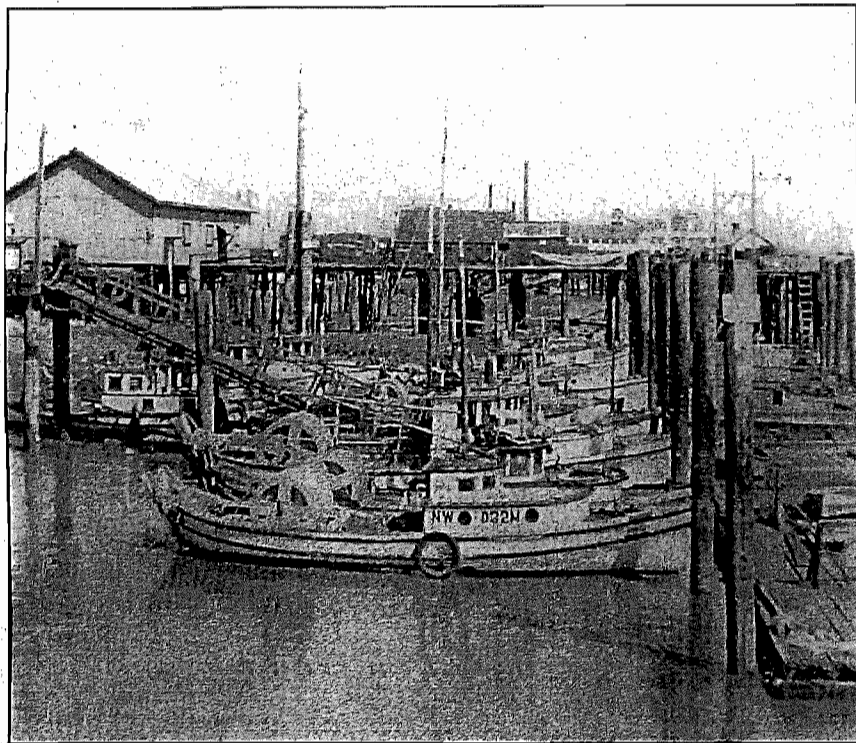
Schedule 2 to the Minutes of the Parks, Recreation & Cultural Services Committee Meeting of Tuesday, January 27, 2015.



Bob Karliner's ELSIE K No. 1 ready for launching from the Stoltz Brothers Boat Works. The gillnetters were hauled out for painting and repairs before the salmon fishing season. (1944) (B. Karliner collection)



Sherman McDonald's VALERIE on the boat hoist at the Gulf of Georgia Cannery. This vessel was built by P. Sather in 1946, and powered by a two-cylinder Heaps gasoline engine. (ca. 1949) (S. McDonald collection)



Cannery row from the Gulf of Georgia Cannery showing the Star camp and the Imperial Cannery in the background, a ramp in the foreground, and gillnetters moored perpendicular to the net floats. (1948) (S. McDonald collection)

feet 6 inches in breadth, and was powered with a 3-cylinder, 20 HP Easthope engine. Three years later, Karlner replaced this vessel with the ELSIE K No. 1 built by the Stoltz brothers. This vessel was powered with a 6-cylinder, high-speed 110 HP Chrysler gasoline engine. It was 35 feet in length, 10 feet in breadth and cost \$7,200. In five years the Fraser River

gillnetter had increased in length by 3 feet and breadth by 2 feet 6 inches. The flared bow, square stern and enlarged cabin with sufficient headroom for a person to stand upright became standard features on Fraser River gillnetters.

Wharves

Net floats were introduced in the 1940s to provide space for net racks and moorage for larger boats in deeper tidal waters. The Phoenix pond was dredged about 1947 to accommodate more boats. Here gillnetters could be tied directly to boat floats, making access to boats at moorage much easier and safer, as ladders were replaced with ramps.

In the late 1940s an elevator was developed to haul boats out of the water for winter storage and repairs. This system was quicker, easier and required less space than iron rails on wooden ways.

Fishing Activities

During the war there was an unlimited demand for all species of canned salmon. In the fall of 1944 Fraser River gillnetters started fishing chum salmon near Qualicum in the Straits of Georgia. Fifteen gillnetters from the river were the only ones fishing this area in the falls of 1944, 1945 and 1946.



Fraser River gillnetters off Qualicum Beach fishing for chum salmon in the fall. (ca. 1995) (B. Karlner collection)