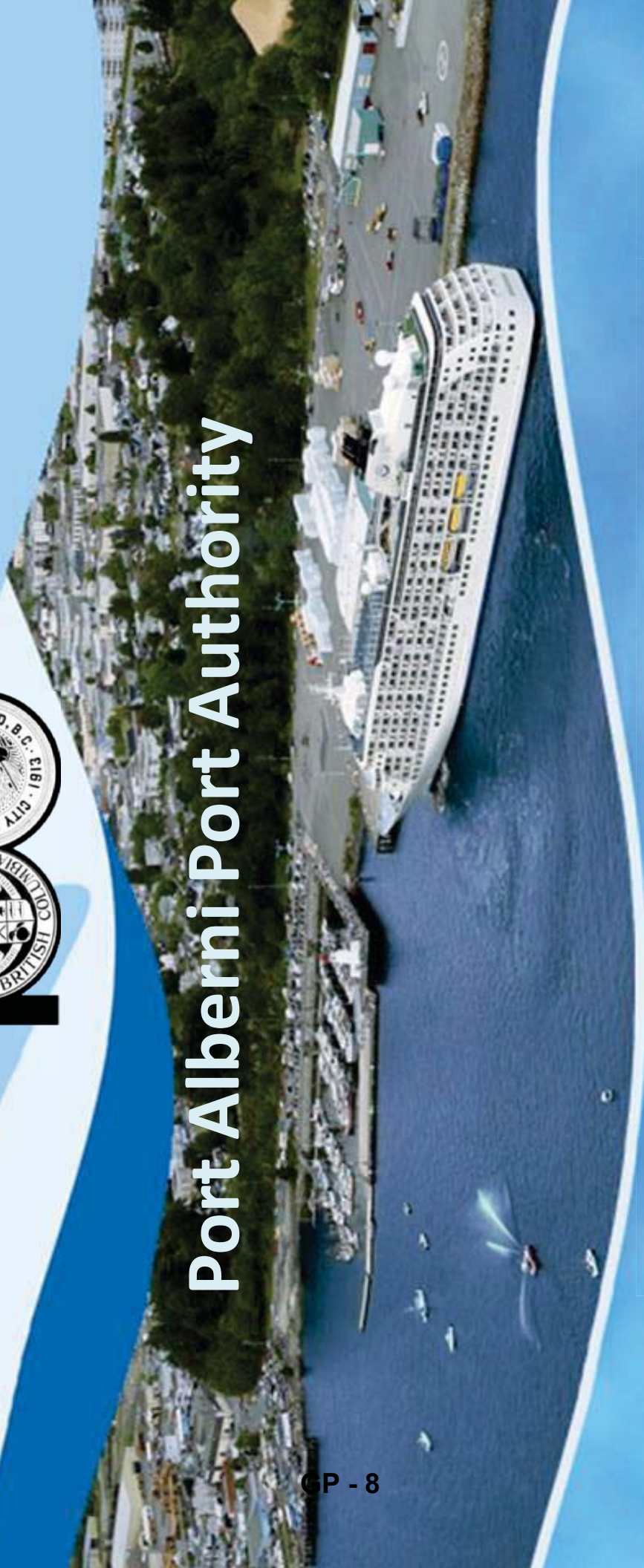


* Port Alberni * British Columbia *



1

Port Alberni Port Authority



CP - 8

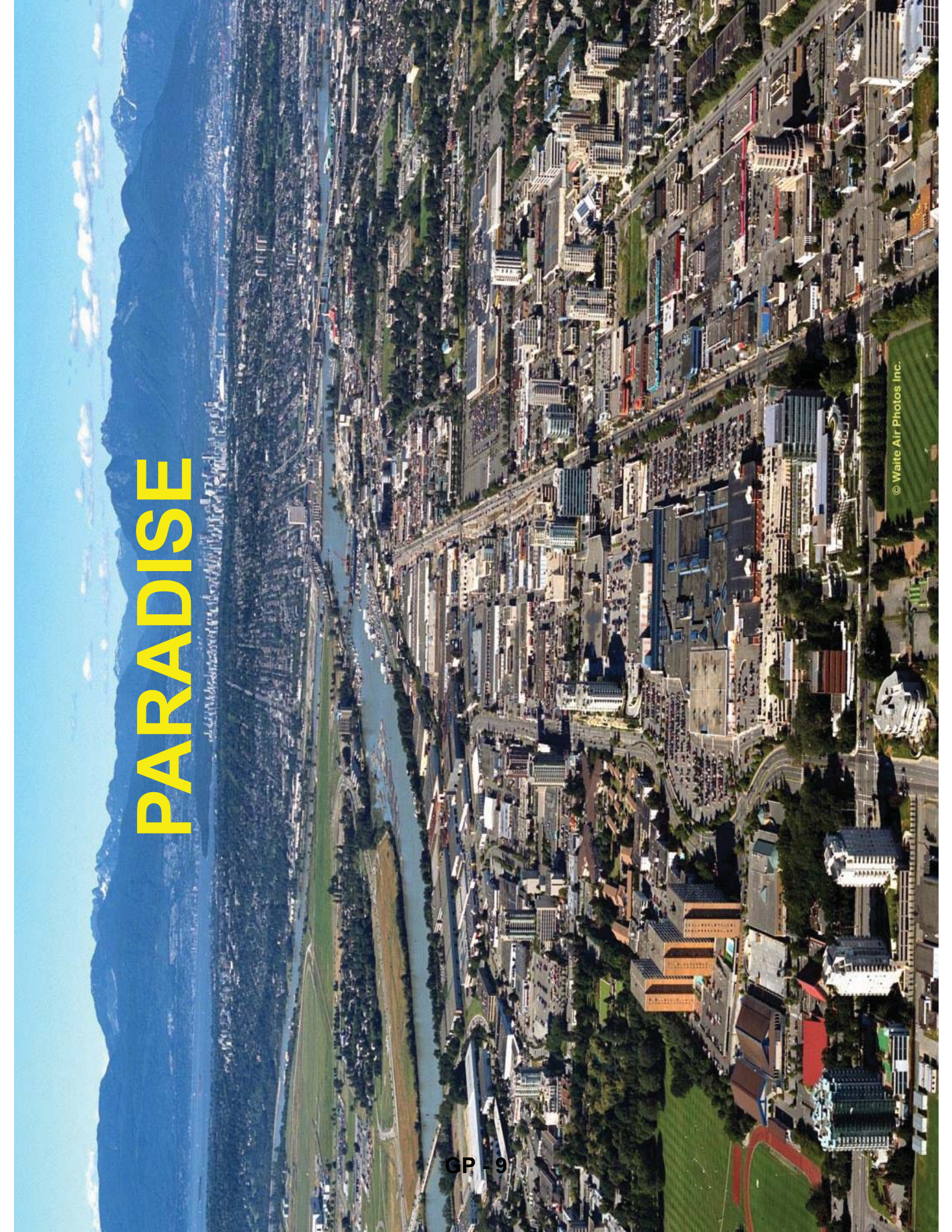


BC JOBS PLAN

“Canada Starts Here”



PARADISE



OR PARADISE LOST?

“If you were perturbed by last summer’s advisory from public health authorities to stay indoors when ground level ozone layers soared during the hot spell, get used to it. Current trends for traffic congestion indicate there’ll be plenty more of that coming.” Stephen Hume: Vancouver Sun March 15, 2015



“Richmond Mayor Malcolm Brodie says while the port has recently renewed the farming leases and the Gilmore Farm lands, his council fears the farmland will one day be used for port lands,” Kelly Sinos Vancouver Sun, February 16, 2015

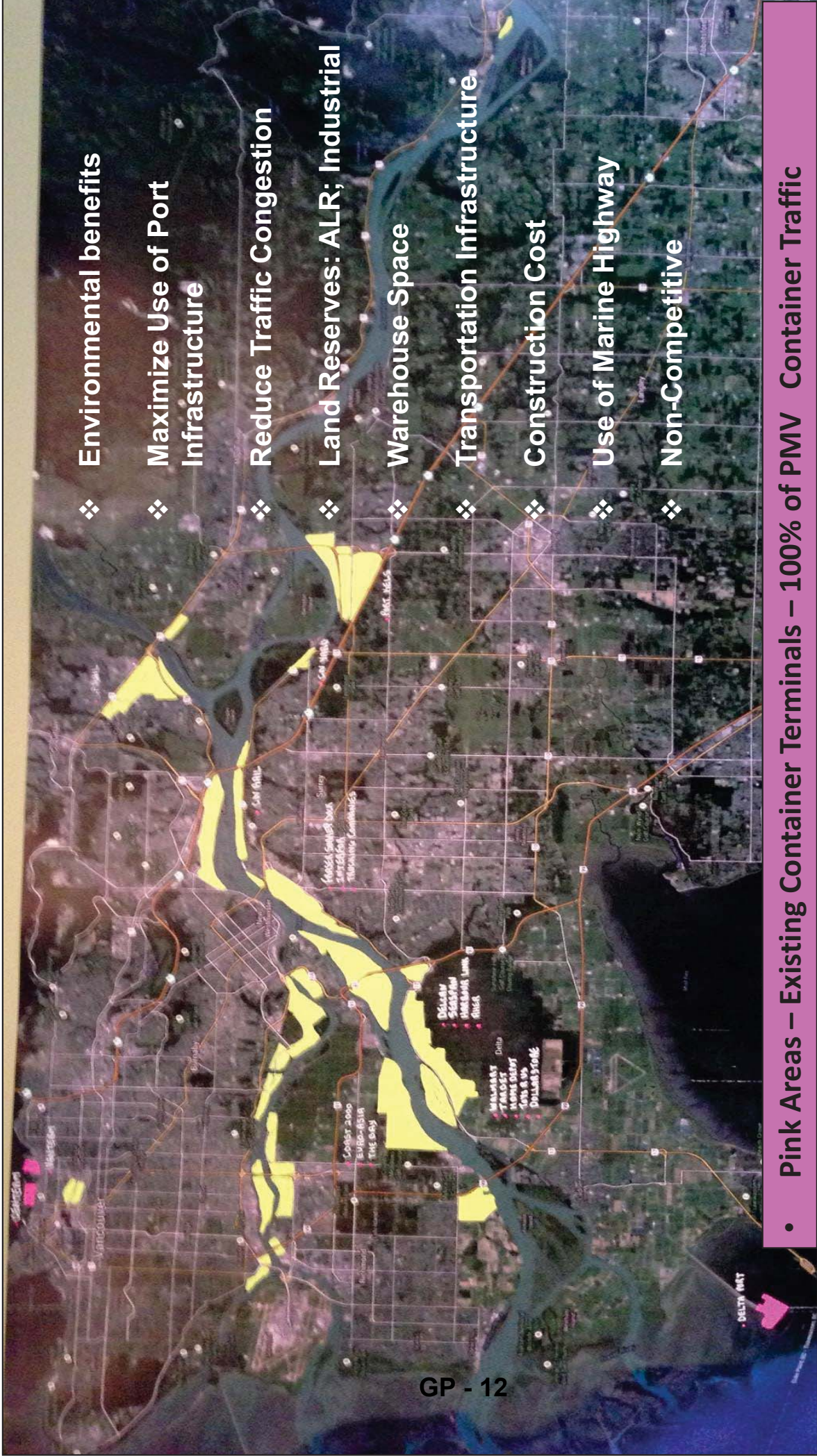
“We need to help people, goods and services to move more easily throughout the Metro Vancouver region,” Mayor Brodie: Vancouver Sun, February 25, 2015



THE “PATH” to SOLUTIONS



Existing Distribution / Industrial Centres Along the Fraser River

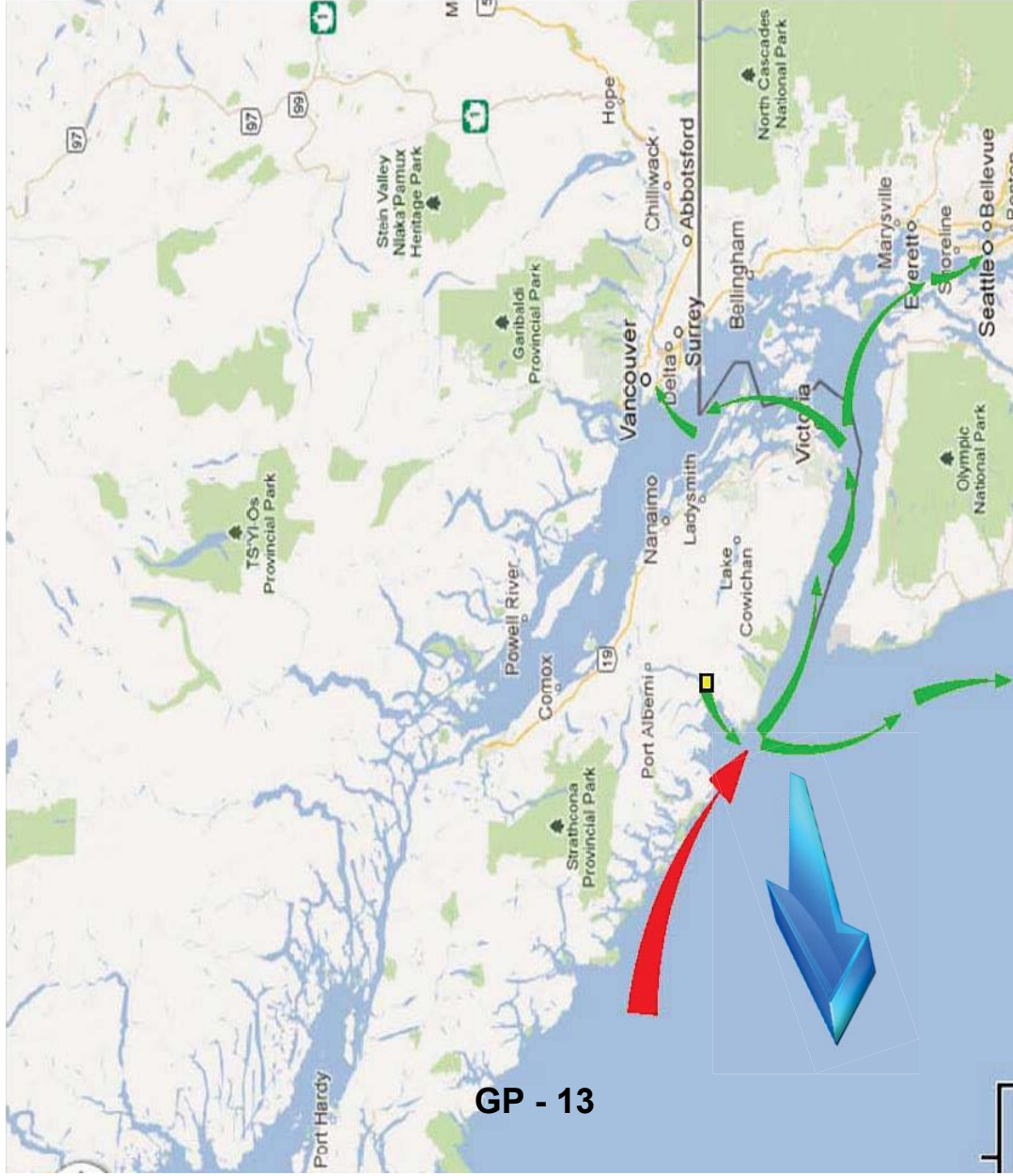


GP - 12

Yellow Areas – Distribution centers, Warehouses, Terminals, Container Depot's, Industrial Land...

THIRD PARTY VERIFIED BENEFITS

- ✓ 50% Truck Trips Reduction = 14.5 mm KMs less / year
- ✓ Reduce commuter time through Massey Tunnel alone by 98,750 hrs / year
- ✓ Reduce CO2 Emission by 22,000 Tons / yr
- ✓ Reduce Nitrogen Oxides Emissions by 470 Tons / yr
- ✓ 3 Days saved Sailing Time
- ✓ Increase Canadian GDP by \$21.3 B
- ✓ Existing PNW savings over \$30 TEU

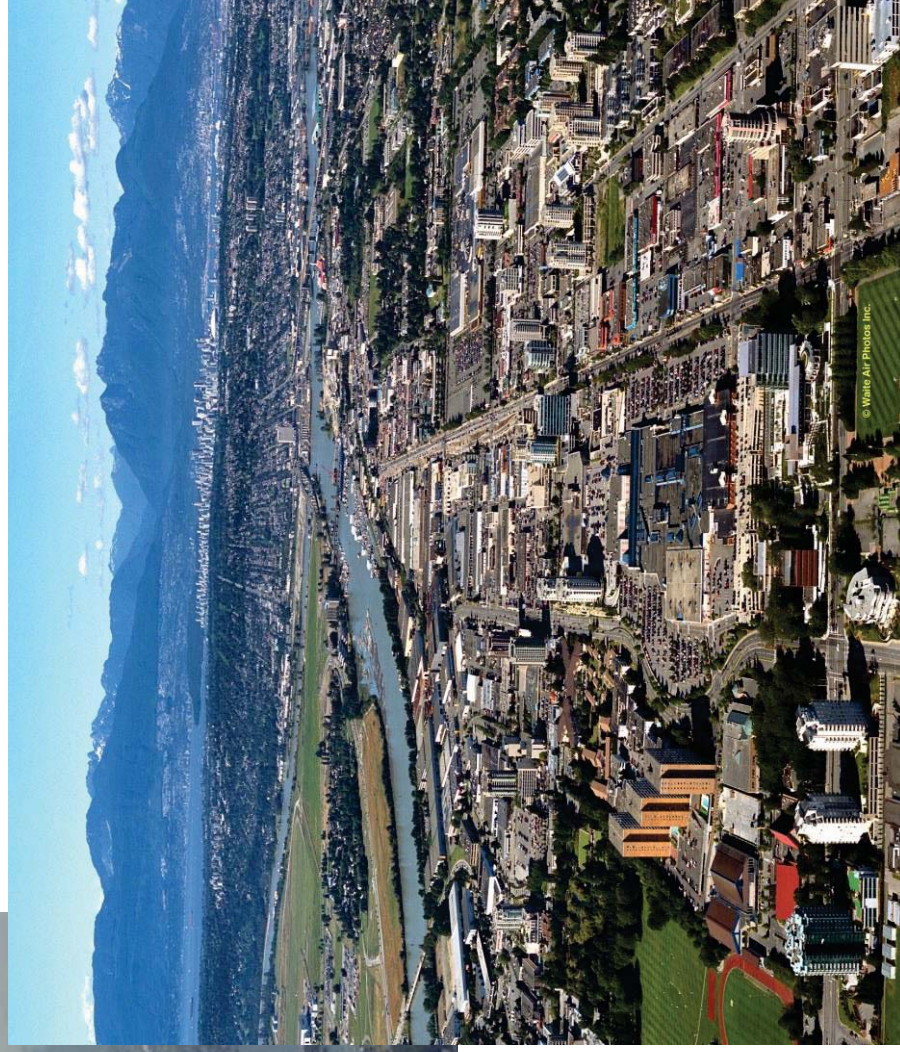


World does it. Why can't we?



THE ASK

1. Support



GP - 15

2. Investment



BC JOBS PLAN



Canada

Questions?

Port Alberni Trans-shipment Hub “PATH”

Thank you!



BC JOBS PLAN

