



To: General Purposes Committee

Date: March 20, 2017

From: Jane Fernyhough
Director, Arts, Culture and Heritage Services

File: 11-7000-09-20-202/Vol 01

Re: **Minoru Complex Entries and Arrivals Public Art Project Review**

Staff Recommendation

That the issuance of a revised Artist Call for the Minoru Complex Entries and Arrivals Public Art Project, as described in the staff report titled, "Minoru Complex Entries and Arrivals Public Art Project Review," dated March 20, 2017 from the Director, Arts, Culture and Heritage Services, be endorsed.

Jane Fernyhough
Director, Arts, Culture and Heritage Services
(604-276-4288)

Att. 2

REPORT CONCURRENCE		
ROUTED TO:	CONCURRENCE	CONCURRENCE OF GENERAL MANAGER
Parks Planning and Design Recreation & Sport Services Capital Buildings Project Development	<input checked="" type="checkbox"/> <input checked="" type="checkbox"/> <input checked="" type="checkbox"/>	
REVIEWED BY STAFF REPORT / AGENDA REVIEW SUBCOMMITTEE	INITIALS: 	APPROVED BY CAO

Staff Report

Origin

On January 16, 2017, at the General Purposes Committee meeting, discussion took place regarding the rationale for the selection of the recommended artwork for the main entry area of the Minoru Complex.

As a result of the discussion, the following referral motion was introduced:

That the matter be referred back to staff:

- (1) to circulate all five shortlisted projects to Council for information; and*
- (2) to consult with stakeholders through the Minoru Major Facility Stakeholder Advisory Committee and report back with their feedback.*

This report brings forward information to address questions raised by Council, and provides a recommendation to issue a revised Artist Call for the Minoru Complex Entries and Arrivals Public Art Project with prescriptive terms of reference that include the history of Minoru Park and a human-scaled work, for Council's consideration.

This report supports Council's 2014-2018 Term Goal #2 A Vibrant, Active and Connected City:

Continue the development and implementation of an excellent and accessible system of programs, services, and public spaces that reflect Richmond's demographics, rich heritage, diverse needs, and unique opportunities, and that facilitate active, caring, and connected communities.

- 2.1. Strong neighbourhoods.*
- 2.3. Outstanding places, programs and services that support active living, wellness and a sense of belonging.*
- 2.4. Vibrant arts, culture and heritage opportunities.*

Analysis

The Five Shortlisted Finalist Concept Proposals

Issued on June 15, 2016, the Artist Call for the Minoru Complex Entries and Arrivals Public Art Project identified the themes "Welcoming" and "Water" to provide a point of departure for interested artists to develop their concept proposals. Artists were encouraged to consider the theme of welcoming, to provide orientation and a sense of arrival at the Minoru Complex.

The five shortlisted finalist artist proposals for the Minoru Complex Entries and Arrivals Public Art Project were displayed for public feedback online through the Let's Talk Richmond website from November 1 - 10, 2016, and in the lobby of Richmond City Hall from November 3 - 10, 2016.

In response to the referral motions, the five shortlisted finalist submissions were circulated in a Memo to Council on January 27, 2017. They are presented in Attachment 1.

On November 21, 2016, the City-appointed selection panel met to interview the five finalist artist teams. The selection panel included representatives from the community and the Minoru Complex stakeholder groups and considered the selection criteria identified in the Terms of Reference for the Artist Call for evaluating the artist's concept proposals, which included:

- artistic merit;
- response to the character of Minoru Park;
- ability to work with other design professionals and stakeholders; and
- appropriateness to the Public Art Program goals.

While each of the five shortlisted finalist submissions addressed the selection criteria in varying ways, the panel concluded that the concept proposal *Leaf Sails*, by artist Douglas Taylor, best exemplified the goals of the project and recommended it for the Minoru Entries and Arrivals Artwork commission. They cited similar enjoyable works by the artist that they had seen elsewhere and noted its calming, meditative and interactive characteristics. Moreover, they liked that it would create a visually striking and inclusive gathering place with a focus on nature and renewable energy. The *Leaf Sails* concept proposal is Submission No. 4 in Attachment 1.

Consultation with the Minoru Major Facility Stakeholder Advisory Committee

On March 9, 2017, staff met with the Minoru Major Facility Stakeholder Advisory Committee to present the recommended proposal *Leaf Sails* for their feedback. Based on discussion at the General Purposes meeting on January 16, 2017, the committee was asked to respond to the following questions about the concept proposal:

- Is this Richmond?
- Is this appropriate for the location?
- Is this the legacy we want to see?

Feedback on the *Leaf Sails* concept included concerns that the work does not resonate with field users and sports programs, connect with the history of the site, represent the multicultural community or reflect indigenous peoples. In support of the work, it was noted that the concept was modern in character, compatible in scale with the architecture of the Minoru Complex, and that the rotating leaves might be understood to reference the history of flight at Minoru Park.

The Committee was also asked to consider if a re-issue of the Artist Call, with a more prescriptive Terms of Reference to include the history of Minoru Park, is a preferred action.

Following further discussion, the Committee recommended that a new Artist Call should be reissued to more specifically:

- connect to the history of the site;
- tell the story of Minoru Park as a place for social activity and community enjoyment;

- be human-scaled; and
- be forward looking.

It was suggested that artists consider referencing our local heroes and pioneers, to inspire Minoru Complex and Park users, ranging from active seniors to young children.

Options

As requested in the referral by Council at the General Purposes Committee meeting held January 16, 2017, staff have provided the five finalist proposals (Attachment 1), presented background on the deliberations of the selection panel in recommending *Leaf Sails* and have met with the Minoru Major Facility Stakeholder Advisory Committee to report back with their feedback.

Leaf Sails was selected in accordance with the Administrative Procedures of the Richmond Public Art Program Policy. However, as is standard practice with all Richmond Artist Calls, submitting artists are advised that the City and the selection panel are not obligated to accept any of the submissions and may reject all submissions. The City reserves the right to reissue an Artist Call as required.

Based on the additional information provided on the five shortlisted finalist submissions and the feedback from the Minoru Major Facility Stakeholder Advisory Committee, Council may:

- endorse the *Leaf Sails* concept proposal by Douglas Taylor as presented;
- direct staff to issue a revised Artist Call for the Minoru Complex Entries and Arrivals Public Art Project with new terms of reference; or
- provide additional instructions for staff.

Recommendation

In consideration of the feedback from the Minoru Major Facility Stakeholder Advisory Committee and further staff review, staff recommend that a new Artist Call be issued with a more prescriptive terms of reference, that the artwork:

- connect to the history of Minoru Park;
- tell the story of Minoru Park as a place for sports, cultural activity and community enjoyment; and
- be integrated with the site and landscape to provide a human-scaled gathering place.

Staff from Parks Planning and Design, Recreation and Sport Services, Capital Buildings Project Development and Public Art have identified a specific location within the main plaza at the entry to the Minoru Complex (Attachment 2). The landscape plan for this area will be revised by the design team in collaboration with the artist to accommodate and integrate the artwork with the site.

Financial Impact

The new Artist Call will have a total budget of \$200,000, as per the previous Artist Call, funded from the approved Major Facilities Phase I Projects. Costs for the new selection panel are available from funds set aside for project administration within the approved public art budget.

Conclusion

The new Minoru Complex facility represents an opportunity to integrate meaningful art to enhance the identity and vibrancy of the Minoru Civic Precinct. A new Artist Call will seek an artwork that reflects the Richmond community, to inspire Minoru Complex and Park users for the future.

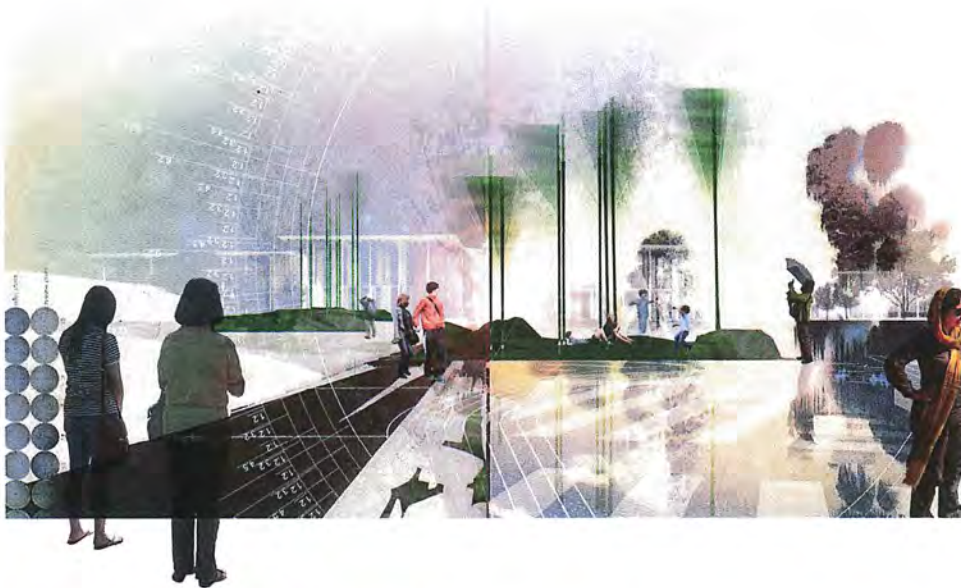
Staff recommend that Council endorse the proposed re-issue of the Artist Call for the Minoru Complex Entries and Arrivals Artwork based on the terms of reference as presented in this report.



Eric Fiss
Public Art Planner
(604-247-4612)

- Att. 1: Shortlisted finalists for the Minoru Complex Entries and Arrivals Artwork
- Att. 2: Proposed Location for Entries and Arrivals Artwork

MINORU COMPLEX ENTRIES AND ARRIVALS PUBLIC ART COMPETITION



SUBMISSION NO. 1

Archipelago
by Atelier Anonymous with Michael Seymour



'Archipelago' is a site-specific installation that uses regionally-relevant historical methods of shipbuilding to create flexible stalks. These stalks serve as armatures that claim wind and rain as materials from which a performative sculptural artwork responds to, and allows for, observation of natural processes in the landscape.

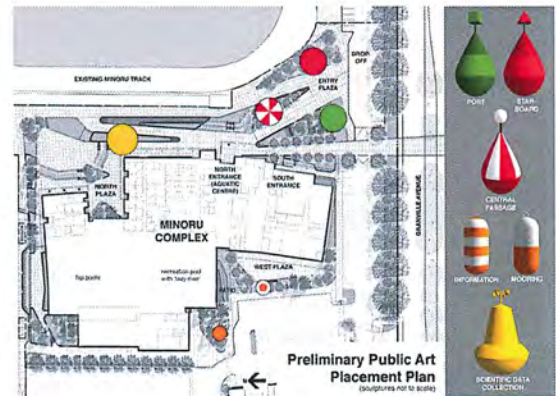
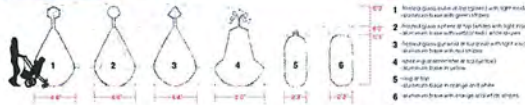
'Archipelago' creates a visual and auditory landmark that signals entry to the Minoru multi-purpose complex by reflecting Richmond's island landscape and archipelago of culturally diverse groups and historic townships. It functions as both artwork and gathering space combining an undulating surface planted with families of swaying fibreglass masts.

MINORU COMPLEX ENTRIES AND ARRIVALS PUBLIC ART COMPETITION



SUBMISSION NO. 2

Passage
by Rebecca Bayer



Passage draws inspiration from the bold and colourful forms of navigational buoys like those found in the waters surrounding the City of Richmond. Each day, vessels large and small navigate safely up and down the North and South Arms of the Fraser River, taking direction from brightly coloured markers moored in the water.

Passage recontextualizes these wayfinding devices as playful landmarks to guide people navigating around the Minoru Complex. The strong maritime aesthetic relates the aquatic activities inside the Minoru Complex to the close relationship that the Fraser River has with history and culture of the City of Richmond.

MINORU COMPLEX ENTRIES AND ARRIVALS PUBLIC ART COMPETITION



SUBMISSION NO. 3

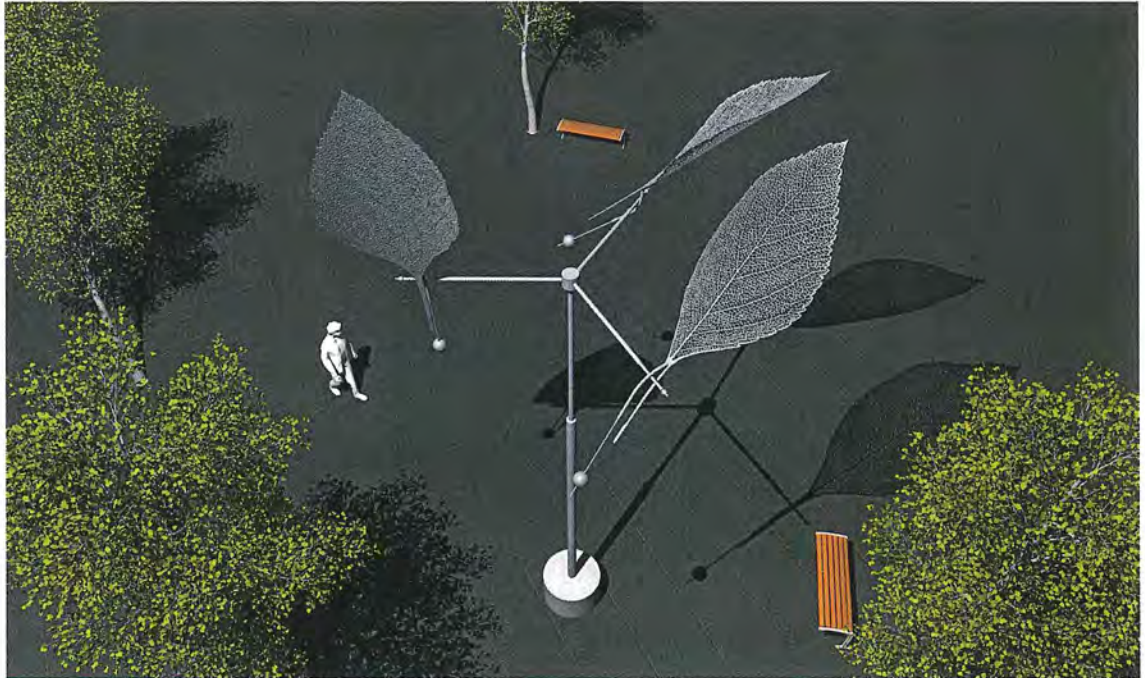
Water Dragon
by Maki Schmok, Robert Schmok, and Ronald Simmer



This majestic *Water Dragon* acts as a welcoming sentinel to patrons of the Minoru Complex by projecting multicultural welcoming messages on the entrance way, as a way of offering friendly greetings in this enchanting vessel with mystical symbolic power balls and festive passengers aboard.

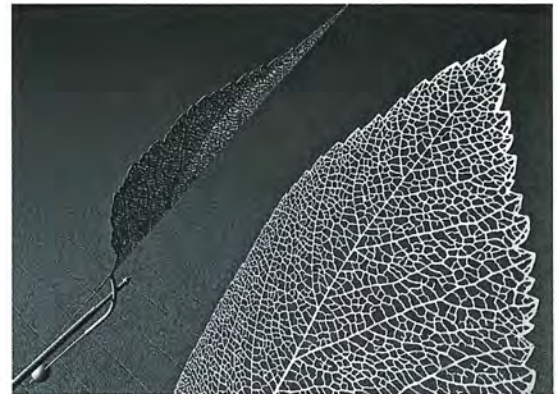
Water Dragons are known to symbolize power and majesty that provide a good omen of prosperity and good fortune for the people in their presence. Thus this prominent sculpture will become a hallmark symbol of success and good luck for Richmond.

MINORU COMPLEX ENTRIES AND ARRIVALS PUBLIC ART COMPETITION



SUBMISSION NO. 4

Leaf Sails
by Doug Taylor

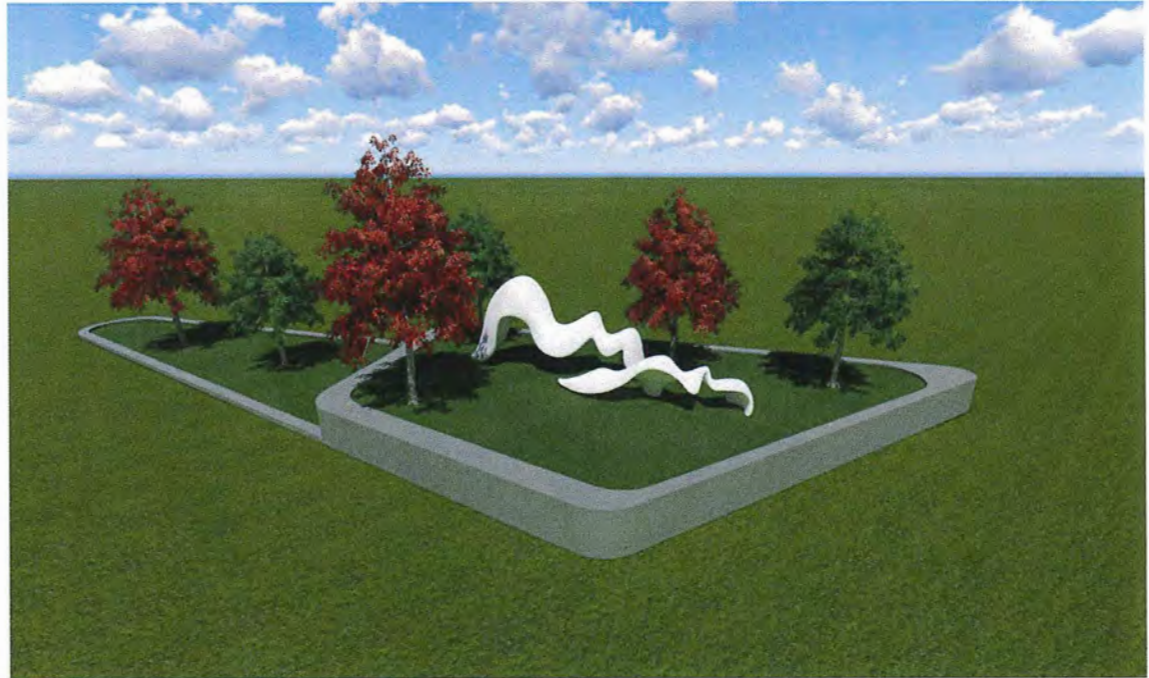


As metaphor, I chose to represent the vascular anatomy of the leaf for its potency as a renewable energy system of incredible efficiency. Clearly the ability to photosynthesize water, sunlight and CO2 into stored carbon energy while expiring oxygen to balance the biosphere is a process that enables our survival. The leaf is a

biological converter of immense capacity. It feeds us, it keeps us warm and puts gas in our tank!

These *Leaf Sails* catch the breeze and rotate the turbine. The counterweight spheres will contain mini generators activated by the playful swinging... the energy produced will be heard as bird song.

MINORU COMPLEX ENTRIES AND ARRIVALS PUBLIC ART COMPETITION



SUBMISSION NO. 5

Waves
by Marie Khouri + Charlotte Wall



Waves focuses attention on the dramatic role water has in the past and still plays in the life of Richmond. It is an island where water surrounds and lies always close to the surface and its history of fisheries, canneries and agriculture has all depended on this

constant source of water. For the indigenous people the catching of fish was necessary for their livelihood and still the fishing vessels all around the island are a testament to that same industry.

Proposed Location for Entries and Arrivals Artwork

