



City of Richmond

Report to Committee

To: Parks, Recreation and Cultural Services
Committee

Date: October 10, 2025

From: Todd Gross
Director, Parks Services

File: 06-2345-20-LSCP1/Vol
01

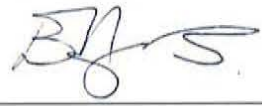

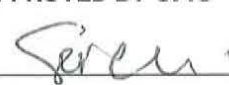
Re: Lansdowne Parks Master Plan

Staff Recommendation

That the Lansdowne Parks Master Plan, as detailed in Attachment 5 of the report titled "Lansdowne Parks Master Plan", dated October 10, 2025, from the Director, Parks Services, be approved.

Todd Gross
Director, Parks Services
(604-247-4942)

Att. 6

REPORT CONCURRENCE		
ROUTED TO:	CONCURRENCE	CONCURRENCE OF GENERAL MANAGER
Development Applications	<input checked="" type="checkbox"/>	
Policy Planning	<input checked="" type="checkbox"/>	
Transportation	<input checked="" type="checkbox"/>	
Recreation and Sport Services	<input checked="" type="checkbox"/>	
SENIOR STAFF REPORT REVIEW	INITIALS: 	APPROVED BY CAO 

Staff Report

Origin

As noted in the staff report titled “Proposed Official Community Plan/City Centre Area Plan (CCAP) Amendment, Lansdowne Shopping Centre Final Master Land Use Plan”, dated January 20, 2021, from the Director, Development, prior to Council’s consideration of the first rezoning application in Phase 1, Parks Services staff are to prepare a Major Park Master Plan for Council’s review. Subsequently, Phase 1 of the Lansdowne Parks Master Plan process was initiated in fall 2022 and concluded with the Lansdowne Major Park and Open Space Guiding Principles being presented to Council for consideration at the Council meeting held on May 8, 2023, which were endorsed.

At the same Council meeting, the following resolution was adopted:

That the Lansdowne Major Park and Open Space Master Plan Process proceed to Phase 2 – development of master plan concept options as outlined in the staff report titled “Lansdowne Major Park and Open Space Guiding Principles and Next Steps,” dated March 31, 2023, from the Director, Parks Services.

Since Council’s adoption of the above resolution, Phase 2 of the Lansdowne Parks Master Plan process proceeded with development of concept options being shared with the public and key stakeholders for feedback. The input received during Phase 2 of the process informed the preparation of the Lansdowne Parks Master Plan, currently being presented for Council’s consideration as part of Phase 3.

The purpose of this report is to respond to the above resolution by:

- Providing an overview of the Phase 2 community engagement process and its outcomes; and
- Presenting the resulting Lansdowne Parks Master Plan for Council’s consideration.

This report supports Council’s Strategic Plan 2022–2026 Focus Area #1 Proactive in Stakeholder and Civic Engagement:

Proactive stakeholder and civic engagement to foster understanding and involvement and advance Richmond’s interests.

1.3 Increase the reach of communication and engagement efforts to connect with Richmond’s diverse community.

1.4 Leverage a variety of approaches to make civic engagement and participation easy and accessible.

This report supports Council's Strategic Plan 2022–2026 Focus Area #2 Strategic and Sustainable Community Growth:

Strategic and sustainable growth that supports long-term community needs and a well-planned and prosperous city.

2.3 Ensure that both built and natural infrastructure supports sustainable development throughout the city.

This report supports Council's Strategic Plan 2022–2026 Focus Area #5 A Leader in Environmental Sustainability:

Leadership in environmental sustainability through innovative, sustainable and proactive solutions that mitigate climate change and other environmental impacts.

5.2 Support the preservation and enhancement of Richmond's natural environment.

This report supports Council's Strategic Plan 2022–2026 Focus Area #6 A Vibrant, Resilient and Active Community:

Vibrant, resilient and active communities supported by a wide variety of opportunities to get involved, build relationships and access resources.

6.1 Advance a variety of program, services, and community amenities to support diverse needs and interests and activate the community.

6.2 Enhance the City's network of parks, trails and open spaces.

6.3 Foster intercultural harmony, community belonging, and social connections.

Background

Originally developed in 1977, the 50-acre Lansdowne Centre site (Lansdowne) is currently occupied by a primarily single-storey shopping centre and surface parking. The site is located in the heart of Richmond's City Centre, bounded by No. 3 Road, Alderbridge Way, Kwantlen Street, and Lansdowne Road. In the Official Community Plan (OCP), Lansdowne is referred to as the "centre of the centre" and will play a critical role in the rapidly growing and evolving City Centre Area.

OCP Amendment Bylaw 10154, related to the Lansdowne Shopping Centre Final Master Land Use Plan (OCP amendment), was adopted by Council on November 27, 2023. In alignment with the OCP amendment, there are plans to redevelop Lansdowne over the course of several years and phases.

The Lansdowne Centre redevelopment vision is for a vibrant, mixed-use community featuring homes, offices, retail, parks, and community amenities. The quantity and distribution of park space at the site, as outlined in the Final Master Land Use Plan, was confirmed by Council through this OCP amendment process. Upon full build-out, 10 acres of public park space,

approximately 20 per cent of the total site area, will be generated. These parks will offer essential opportunities for Lansdowne Village residents, the wider Richmond community, and visitors to spend time outdoors, be active, play, celebrate, connect with one another and with nature.

Lansdowne Parks Master Plan Process

As outlined in the *Overview of the Parks Planning Process* diagram below and Lansdowne Parks Master Plan Process section of this report, the Lansdowne Parks Master Planning Process is comprised of three phases. Phase 1 focused on background research, site analysis and development of guiding principles which were adopted by Council on May 8, 2023. Phase 2, which was complete in spring 2025 focused on development of master plan concept options for community and stakeholder input. Phase 3, which is the current phase, was focused on identification of a preferred master plan concept option and development of the final Lansdowne Parks Master Plan for Council consideration.

Overview of the Parks Planning Process



Lansdowne Parks Overview

The Lansdowne parks will consist of four primary areas. The distribution, size, location and primary objective of these spaces was determined and adopted through the OCP amendment process. The park spaces are distributed across the site in order to knit them into the overall site redevelopment and broader city transportation and park network, compliment adjacent uses such as the Lansdowne Canada Line station and Kwantlen Polytechnic University, maximize solar access and offer a variety of outdoor spaces in terms of scale, programming and character.

The four Lansdowne parks will consist of the following:

Civic Plaza

The Civic Plaza will be located at the southwest corner of the site, adjacent to the Lansdowne Canada Line Station and is envisioned to be a welcoming and well-serviced square capable of hosting events, supporting cultural activities, showcasing public art, and providing informal recreation and pedestrian routes. It will be approximately 1.5 acres in size, which is comparable to a soccer field. The Civic Plaza is intended to have an event hosting capacity of up to 2,500 to 5,000 attendees.

Centre Park

The Centre Park will be centrally located along Lansdowne Road between extensions of Hazelbridge Way and Cooney Road through the site. It will be approximately five acres in size, which is 0.8 acres larger than Aberdeen Neighbourhood Park, and will consist of a wide array of programming and amenities including a playground, plaza, covered outdoor space, open lawn, exchange garden, public washrooms, water feature, rain gardens, water play and dog off-leash area. As outlined in the OCP amendment, the objective is for the Centre Park to be adaptable to multiple uses, including major events and informal recreation. It will feature varied edges activated with furnishings and equipment, a destination playground, public art, pedestrian and cycling routes, as well as contribute to the City's ecological network. The Centre Park is intended to have an event hosting capacity of 8,600 to 17,300 people.

Kwantlen Neighbourhood Plaza

The Kwantlen Neighbourhood Plaza (Neighbourhood Plaza) will be located at the southeast corner of the site next to Kwantlen Street at Lansdowne Road. It will be approximately 0.5 acres in size, which is similar in size to two tennis courts. As outlined in the OCP amendment, the objective of this space is to support year-round gathering and cultural activities, and provide intimate, garden-like spaces.

Lansdowne Linear Park

The Lansdowne Linear Park (Linear Park) will span the entire southern portion of the site. It will form part of a larger linear park system connecting the Richmond Olympic Oval and riverfront to the Garden City Lands, which is being incrementally delivered as fronting sites are redeveloped. The Linear Park will be approximately 20 metres wide and 500 metres long, which is about three times the width of a pickleball court and 1.25 times the length of a standard track. As outlined in the OCP amendment, the objective for this park space is to be a broad, tree-lined promenade with separation for pedestrians, cyclists, and micro-mobility devices, as well as include areas for rest and small gatherings.

Additional Open Space

In addition to the four primary Lansdowne park areas, additional public open space will be delivered through the redevelopment of Lansdowne. This additional open space will complement and connect the Lansdowne parks together and integrate the Lansdowne redevelopment into the

surrounding City Centre Area transportation and open space network. The additional open space includes major and minor green links, a plaza along No. 3 Road, pedestrian- and cycling-oriented streets and mews, as well as park enhancement setback areas. The green links, plaza along No. 3 Road, and park enhancement setback areas will be secured through statutory right-of-way (SRW) agreements and will provide approximately three acres of additional public open space.

See Attachment 1 for the Lansdowne Parks and Open Space Diagram.

Analysis

Lansdowne Parks Master Plan Process

The objective of the Lansdowne Parks Master Plan process was to ensure an accessible, comprehensive and inclusive community engagement process towards development of a master plan that will guide future detailed design and implementation of these pivotal park spaces. The Lansdowne Parks Master Plan process started in November 2022 and took place across three phases. The Lansdowne Parks Master Plan process is now in its third and final phase, which culminates with the development and presentation of the Lansdowne Parks Master Plan to Council for consideration.

Phase 1 – Lansdowne Parks and Open Space Guiding Principles (Completed Spring 2023)

The first phase of the Lansdowne Parks Master Plan process was centered around background research, site analysis and development of a set of guiding principles for the Lansdowne parks and open space. This phase included engagement with the community, key stakeholders and interested parties, including, but not limited to the Accessibility Advisory Committee, Advisory Committee on the Environment, Intercultural Advisory Committee, and Seniors Advisory Committee. The final Lansdowne Parks and Open Space Guiding Principles were adopted by Council on May 8, 2023. The intention of the guiding principles was to inform the development of the Lansdowne Parks Master Plan and to serve as touchstones when key decisions need to be made about these future park spaces. See Attachment 2 for the Lansdowne Parks and Open Space Guiding Principles.

Phase 2 – Lansdowne Parks Master Plan Concept Options and Public Engagement (Fall 2024 to Spring 2025)

The second phase of the Lansdowne Parks Master Plan process was focused on the development of multiple Lansdowne Parks Master Plan concept options for feedback from the public, key stakeholders and interested parties. The engagement included two drop-in public open houses on March 13 and 15, 2025, at Lansdowne Centre, as well as one on March 22, 2025, at the Richmond Cultural Centre. The open houses were complimented by online engagement via LetsTalkRichmond from March 10, 2025, to April 13, 2025. Both of the open houses, as well as the online engagement, included a survey seeking input on the master plan concept options as well as the priorities for the character, programming and amenities for each of the four Lansdowne park areas. The online and in-person survey and open house boards were available in English and Traditional Chinese. Multilingual staff and consultants were available at the open houses to engage in discussion with attendees and respond to questions. See Attachment 3 for the

public open house boards and Attachment 4 for a summary of the public engagement process and results.

Phase 3 – Lansdowne Parks Master Plan (Spring to Fall 2025)

The third phase of the Lansdowne Parks Master Plan process involved refinement of the preferred Lansdowne Park Master Plan concept, identified through the public engagement program. The preferred concept master plan option, *Inspired by Nature*, was supported by 59.2 per cent of respondents and places significant emphasis on nature, ecology, and environmental sustainability. Its curvilinear design is inspired by forms seen in nature and by the serpentine river systems that shape Richmond’s landscape. The plan was subsequently refined to integrate feedback from the public and interested parties, incorporate technical analysis, and ensure alignment with applicable City policies, plans, and strategies towards development of the Lansdowne Parks Master Plan.

See Table 1 for an abbreviated summary of the Lansdowne Parks Master Plan process to date.

Table 1. Lansdowne Parks Master Plan Process Summary

Phase 1	
November 2022	Background research and site analysis
December 2022	Development of draft guiding principles
January – February 2023	Consultation with the community and interested parties
March 2023	Development of final guiding principles
April 2023	Report to Parks, Recreation and Cultural Services Committee on Lansdowne Parks and Open Space Guiding Principles and Next Steps
May 8, 2023	Lansdowne Parks and Open Space Guiding Principles adopted by Council

Phase 2	
November 2024	Development of potential park program and amenity opportunities
December 2024 – January 2025	Engagement with the community and interested parties on program and amenity opportunities and priorities
February 2025	Development of Lansdowne Parks Master Plan options integrating priority program and amenity options
March 2025	Public engagement process
Phase 3	
May 2025	Compile public engagement results
June – July 2025	Refine the preferred Lansdowne Parks Master Plan based on public and interested party feedback
August – September 2025	Development of final Lansdowne Parks Master Plan
October 2025	Report to Parks, Recreation and Cultural Services Committee on the Lansdowne Parks Master Plan

Lansdowne Parks Master Plan

The Lansdowne Parks Master Plan represents the culmination of a comprehensive, multi-phase process that included technical studies, interdepartmental collaboration, consultation with key stakeholders, interested parties, and the public.

The Lansdowne Parks Master Plan:

- Establishes a clear vision for the future parks at Lansdowne;
- Supports the creation of a connected, vibrant, and inclusive parks system that meets the needs of a growing and diversifying community;
- Provides guidance for the phased design and construction of these parks as redevelopment progresses; and
- Aligns with the OCP and City Centre Area Plan.

See Attachment 5 for the Lansdowne Parks Master Plan.

Lansdowne Parks Master Plan Key Features

All of the Lansdowne Parks will incorporate a series of common key elements that unite them into a cohesive network, contributing to a strong neighbourhood identity while fostering social interaction, comfort and accessibility. These elements include:

- A connected pathway network that enhances accessibility and connectivity;
- Integrated seating and tables to encourage gathering and social interaction;

- Large shade trees and flowering cherry trees that enhance comfort and seasonal beauty; and
- Covered outdoor spaces designed for year-round use.

The following sections describe the distinct features incorporated into each of the Lansdowne Parks, as illustrated in Attachment 5.

Civic Plaza

This highly active and welcoming public space will accommodate the daily flow of people to and from the Lansdowne Canada Line station and No. 3 Road intersection while serving as a destination for the broader community. The Civic Plaza will provide a dynamic setting for play, relaxation, gathering, and social interaction, with the flexibility to host medium-sized events and performances that enrich civic life.

The Lansdowne Parks Master Plan includes the following key features and amenities in the Civic Plaza:

- A flexible open plaza space to support seasonal programming and events;
- A central in-ground water feature as a focal point; and
- Access to a city-scale mobility hub.

Centre Park

The Centre Park will be the green heart of the Lansdowne neighbourhood. It is envisioned as a welcoming, dynamic, and adaptable public space that balances everyday community use with the capacity to host large-scale events. As the primary gathering and recreation space for Lansdowne residents, and a destination for the wider Richmond community and visitors, the park will be a place to celebrate, play, be active, socialize, relax, and connect with nature.

The Lansdowne Parks Master Plan includes the following key features and amenities in the Centre Park:

- A large central lawn designed to support informal recreation and socialization (picnics, play, pick-up sports and relaxation) as well as programmed activities and special events;
- A perimeter walking loop offering opportunities for exercise;
- A large destination playground;
- Sport courts and a games zone to support active recreation and socialization;
- A public washroom and storage facility to enhance user comfort and convenience, and to support event equipment set-up;
- A water play feature offering interactive cooling in warmer months;
- Stormwater features that showcase sustainable design and enhance biodiversity;
- A dog off-leash area to support social connections for both people and pets;
- A garden area for community enjoyment and engagement with nature; and
- Connections to a neighbourhood scale mobility hub.

Neighbourhood Plaza

The Neighbourhood Plaza is designed as a welcoming, small-scale public space that supports the rhythms of daily neighbourhood life. It will provide opportunities for nearby residents, students and employees to gather casually, relax, and play in a setting that fosters connection and belonging close to home.

The Lansdowne Parks Master Plan includes the following key features and amenities in the Neighbourhood Plaza:

- Garden areas that bring colour and seasonal interest;
- Retention and celebration of existing trees at the heart of the space;
- An intimate plaza; and
- A neighbourhood-scale playground tailored to local families and children.

Linear Park

The Linear Park will form a vital link in a city-wide green corridor, connecting the Richmond Olympic Oval and waterfront to the Garden City Lands. As both a transportation route and a recreational destination, it will provide safe, separated pathways for cycling and walking while incorporating park-like amenities that encourage relaxation, play, and fitness. The Linear Park will balance movement with moments of pause, offering spaces that invite residents and visitors to engage with nature and community along the way.

The Lansdowne Parks Master Plan includes the following key features and amenities in the Linear Park:

- Separated cycling and pedestrian pathways to support active transportation and informal recreation;
- Retention and incorporation of existing shade trees to preserve character and identity;
- Games and fitness nodes integrated throughout the corridor; and
- Rain gardens that offer green infrastructure and add visual interest.

An Interconnected Parks Network

As illustrated in the Lansdowne Parks Master Plan, together, the Centre Park, the Neighbourhood Plaza, Civic Plaza, and the Linear Park will result in a dynamic, diverse, and interconnected network of public spaces. This system of parks will serve the growing and diversifying Lansdowne neighbourhood and broader City Centre by providing opportunities for residents and visitors of all ages and abilities to gather, play, celebrate, relax, be active, connect with each other and with nature, and participate in civic life.

Implementation Phasing

According to the Council-approved OCP amendment, the Lansdowne parks will be delivered by the developer and handed over to the City incrementally across several phases as the site redevelops. The phasing, which was determined through the OCP amendment and secured through a legal agreement registered on title, was developed in consideration of several key factors including maintaining operations of the shopping centre for as long as practically

feasible, provision of adequate parking, and provision of sufficient park space to meet the park service level needs of the growing surrounding community.

To ensure adequate park space and amenities are provided in alignment with the growing surrounding community, interim conditions of the Linear Park, Centre Park, and Civic Plaza will be delivered in earlier phases of site redevelopment. The programming for the interim conditions of these spaces will align with the community input received as part of this park planning process. The design of the interim spaces will also prioritize the capacity to repurpose and recycle materials. Similar to the final, permanent condition of each park space, their interim conditions will be implemented by the developer and handed over to the City.

Please see Table 2 for a summary of the implementation of the Lansdowne parks as well as Attachment 6 for the phasing plan.

Table 2. Lansdowne Parks Implementation Phasing Summary

Final Condition (Permanent Major Park)	Interim Condition (Interim Major Park)
Phase 1	
Linear Park Cooney Road to Kwantlen Street	Linear Park – No. 3 Road to Cooney Road
Neighbourhood Plaza	
Phase 2	
N/A	Civic Plaza
Phase 3	
N/A	Centre Park
Phase 4	
N/A	N/A
Phase 5	
Linear Park Hazelbridge Way to Cooney Road	N/A
Centre Park	
Phase 6 and/or 7 to the Discretion of the City	
Linear Park No. 3 Road to Hazelbridge Way	N/A
Civic Plaza	

When Phase 4 of the development proceeds, additional opportunities for community engagement will be provided through public open houses and LetsTalkRichmond. This additional engagement will take place prior to the detailed design and implementation of the Centre Park in

Phase 5 of the development, ensuring this park aligns with community needs and expectations as new residents move in and the surrounding neighbourhood evolves.

Ownership Model and Operations

As outlined in the OCP amendment, the final condition of the Lansdowne parks will be owned (fee simple) by the City and the interim conditions will be secured by SRW agreements. With respect to maintenance and operations, the City will be responsible for the final condition of the Lansdowne parks, while the Owner/Applicant will be responsible for the interim conditions. The Lansdowne parks are not included in the City's Amenity Cost Charge inventory. As such, the cost of implementing both the final and interim conditions will be borne by the owner/applicant, with implementation and acquisition costs for the permanent condition of the dedicated Lansdowne parks being eligible for Development Cost Charge credits.

Similar to practices in other local municipalities such as Vancouver, Surrey and Burnaby, the City may choose to work with external vendors in the future to deliver special events in the Lansdowne parks. Should the current owner/applicant wish to host events in the Lansdowne parks final or interim condition, in alignment with standard City procedures, they would be subject to the City's event application and approvals process. This would allow opportunities for current popular events that take place at Lansdowne Centre, such as the Lunar New Year Celebration, Spring Carnival and gardening workshops, with potential to continue into the future.

Next Steps

Should Council approve the Lansdowne Parks Master Plan, it will be used as a framework to guide the detailed design and implementation of the Lansdowne parks. The detailed design and implementation will be carried out through servicing agreements associated with each phased rezoning of the site. The phasing was mapped out through the land use plan and the OCP amendment process and is based on a balance between extending full to partial mall operations, maintaining adequate parking supply and providing sufficient park and open space to meet the needs of the new and expanding community. The parks and open spaces for each phase are to be completed prior to occupancy for the buildings within that phase.

At the Public Hearing on March 18, 2024, Council granted third reading to the Rezoning application (RZ 23-011557) for Phase 1A. Upon completion of Phase 1A, the City will receive the final condition of the eastern third of the Linear Park (Kwantlen Street to Cooney Road) as well as interim conditions of the Neighbourhood Plaza and the remainder of the Linear Park (Cooney Road to No. 3 Road).

As the phased rezoning of Lansdowne advances and additional details emerge through the detailed design of the Lansdowne parks, budget requests to address operating impacts for park maintenance, operations and programming will be brought forward through the capital planning process.

Financial Impact

None.

Conclusion

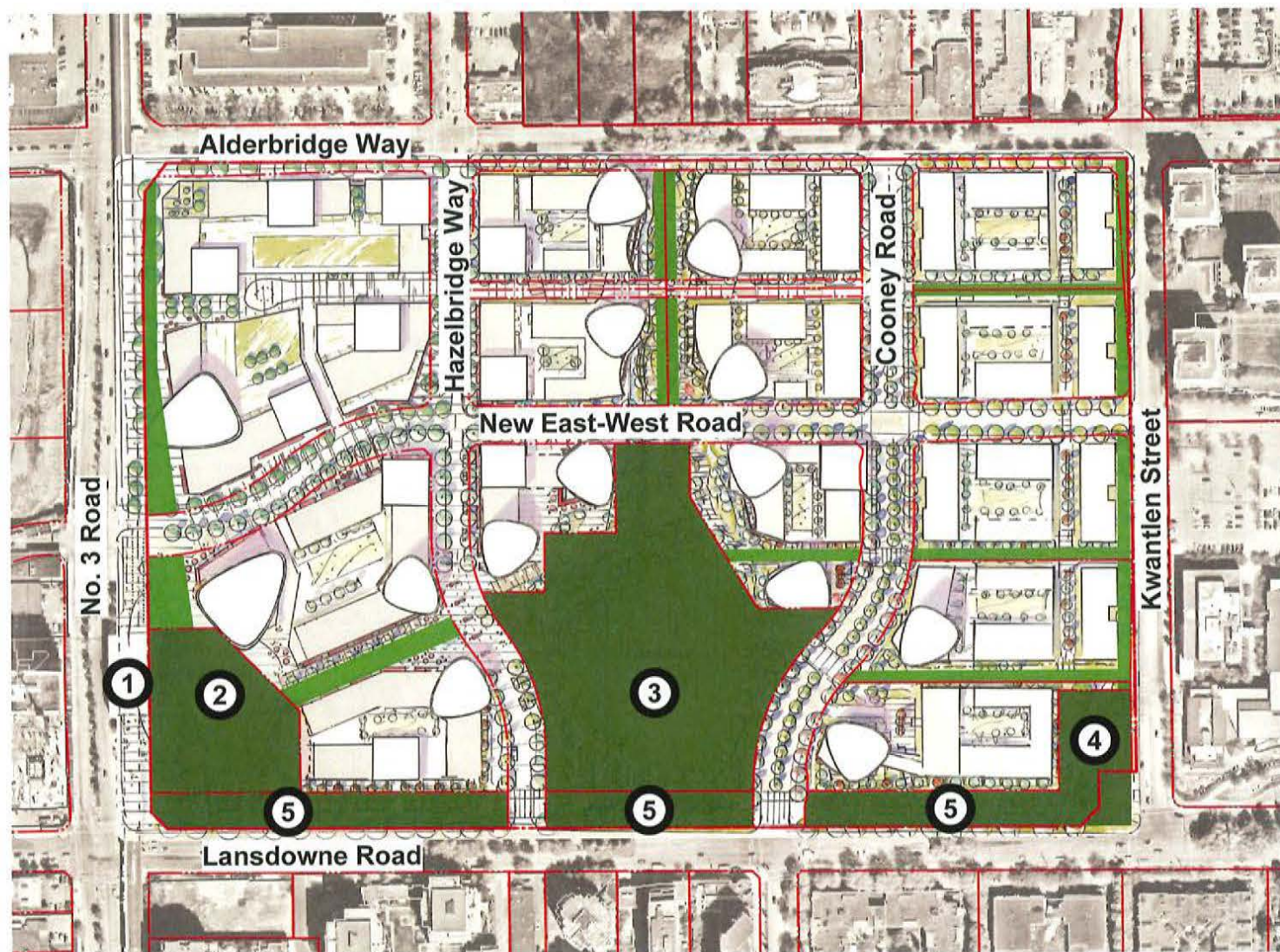
The Lansdowne parks will form the heart of a vibrant, connected, and resilient Lansdowne neighbourhood and City Centre, fostering social, physical, and mental well-being for local residents, as well as city-wide and regional visitors. Anchored in community priorities and guided by inclusive consultation, the Lansdowne Parks Master Plan provides a framework to ensure that these spaces have the opportunity to become more than just parks—to become destinations that inspire play, connection, and participation in civic life, supporting Richmond's growth, while enhancing livability, inclusivity, and quality of life.



Miriam Plishka
Research Planner 2
(604-204-8917)








- Att. 1: Lansdowne Parks and Open Space Diagram
2: Lansdowne Parks and Open Space Guiding Principles
3: Public Open House Boards
4: Summary of Public Engagement
5: Lansdowne Parks Master Plan
6: Lansdowne Phasing Plan

Lansdowne Parks and Open Space Diagram



Early concept sketch plan of overall Lansdowne redevelopment shown for illustrative purposes only

LEGEND:

-  Lansdowne Parks (including setback enhancement areas)
-  Open Space (plazas and greenlinks secured through statutory right-of-way agreements)
-  Lansdowne Canada Line Station
-  Civic Plaza
-  Centre Park
-  Kwantlen Neighbourhood Plaza
-  Lansdowne Linear Park

Lansdowne Parks and Open Space Guiding Principles



CONNECT

- Inclusive for all: Where people of all ages, genders, abilities, and backgrounds are welcome to connect with each other and their community.
- Variety of spaces: Where people have daily opportunities to access a variety of urban public spaces that include a diverse set of features, facilities, and functional connections.
- Connected to the city centre: A place that is well connected and responsive to its surrounding context and the city centre park system.



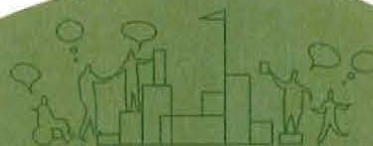
THRIVE

- Health and wellness: Where everyone, no matter their age, ability, or background, has opportunities to thrive through inclusive, year-round amenities that offer health and wellness, play, and physical activity.
- Ecologically integrated: Where innovative approaches to environmental sustainability result in resilient and thriving urban ecosystems.
- Sense of safety: That is welcoming to all and offers a sense of safety and comfort through considerate design of the built environment.



CELEBRATE

- A gateway to Richmond City Centre: That is a regional destination and gateway to Richmond's city centre, created through memorable place-making, iconic design and dynamic events.
- Active and eventful: Where the Richmond community is invited to come together and celebrate through a wide range of exceptional community and signature events and programming.
- Highlighting local arts, culture, and heritage: Where Richmond's multi-cultural arts and heritage are showcased and celebrated.



IMAGINE AND BUILD THE FUTURE

- Future ready: With the flexibility and capacity to respond to the future needs of the surrounding community as it grows and diversifies.
- Regenerative: Where a well-integrated and resilient ecological network contributes to social and environmental regeneration.
- Prepared to innovate: That can be adapted to accommodate and embrace future emergent best management practices, innovations, technologies and trends.

Public Open House Boards

LANSDOWNE PARKS MASTER PLAN

Welcome!

The Lansdowne Centre property will be transformed over the next several years into a vibrant mixed-use community with homes, commercial space, amenities and parks. The parks will provide vital public green and open space for everyone to get outside, connect, play, gather, relax, get active and celebrate.

The future Lansdowne parks and open space will be built over the course of several phases over several years, as the Lansdowne Centre property is incrementally redeveloped.

LANSDOWNE PARKS MASTER PLAN



We want to hear from you!
Link to the online survey
via Lets Talk Richmond



Key Components of the Future Parks and Open Space

The Lansdowne parks and open space will comprise four main physical areas:

- A civic plaza
- A centre park
- A linear park
- A neighbourhood plaza

The size, location, configuration and objectives of these areas were established through a multi-phased Official Community Plan/City Centre Area Plan (OCP/CCAP) amendment process which included public engagement throughout. **The OCP/CCAP amendment was adopted by Council on November 27, 2023. For more information on the OCP/CCAP amendment and overall Lansdowne redevelopment project, please scan the QR code.**

LANSDOWNE CENTRE REDEVELOPMENT



For further information about the overall Lansdowne Centre redevelopment project, please scan the QR code.



NOTE: IMAGE ABOVE IS A HIGH-LEVEL ILLUSTRATION. REFER TO PARK PLANS FOR CURRENT DESIGN SCHEMES.



Centre Park



Linear Park

LANSDOWNE PARKS MASTER PLAN



PRCS 177

LANSDOWNE 公園規劃

誠邀您的參與!

Lansdowne Centre 購物中心將在未來數年逐步轉型，成為一個充滿活力的綜合社區，涵蓋住宅、購物、商業空間、公共設施以及公園等多樣化功能。這些公園將為社區居民提供寶貴的綠地和開放空間，讓大家可以有更多機會外出活動、交流、遊戲、聚會、放鬆身心，並共同慶祝節慶時刻。

未來的Lansdowne公園和開放空間將分階段進行建設，隨著Lansdowne Centre 購物中心物業的重新開發而逐步成形。

LANSDOWNE 公園規劃



我們希望聽到您的意見！
請掃描或寫信上訴管 Let's
Talk Richmond



未來公園與開放空間的核心要素

Lansdowne公園和開放空間將包括四個主要區域：

- 一個公共廣場
- 一個中央公園
- 一個綠廊公園
- 一個鄰里廣場

LANSDOWNE CENTER 重建規劃



掃描瞭解更多關於Lansdowne Centre
重建規劃信息

這些區域的大小、位置、佈局及規劃目標，是通過多階段的社區規劃大綱/市中心區域規劃 (OCP/CCAP) 的修訂流程而確定，整個過程都包含了公眾諮詢與廣泛參與。OCP/CCAP修訂已於2023年11月27日獲得市議會的正式通過。若想了解更多關於OCP/CCAP修訂及Lansdowne整體重建項目的詳細資訊，歡迎掃描二維碼。



LANSDOWNE 公園規劃



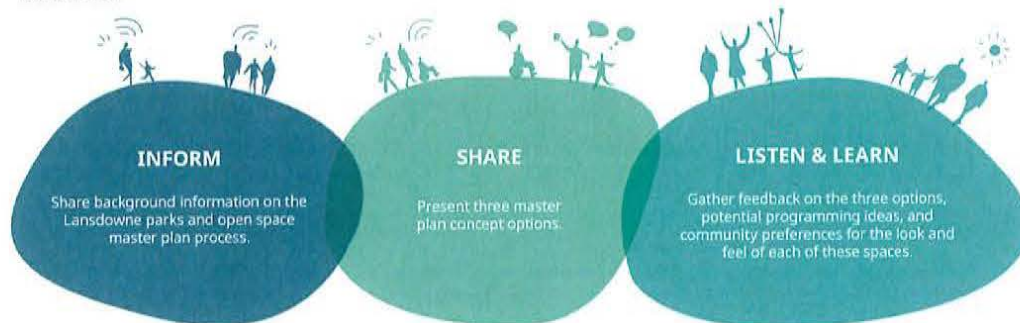
LANDSDOWNE PARKS MASTER PLAN

Why are we here today?

To hear from you! Your input matters and it will help shape the future Lansdowne parks and open space areas.

Your input will ensure the areas align with community values and meet community needs.

We are here to:



LANDSDOWNE PARKS MASTER PLAN

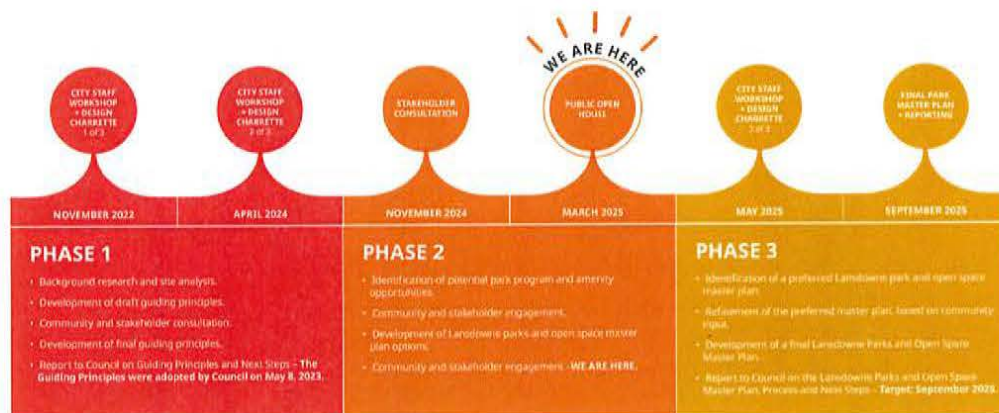


We want to hear from you!
Link to the online survey
via Lets Talk Richmond



The Timeline

The feedback received today will inform the development of a Lansdowne parks and open space master plan.



Civic Plaza



Neighbourhood Plaza

LANSDOWNE 公園規劃

公眾開放日- 今日目標

LANSDOWNE 公園規劃

我們希望聽到你的意見！
請掃描或線上問卷 Let's
Talk Richmond



我們誠摯邀請您提供意見！您的建議對於塑造未來Lansdowne公園至關重要！
您的參與也將確保這些規劃符合社區的核心理念，並滿足社區的整體需求。

我們齊聚於此的目的是：



項目時間軸

今天收集到的意見回饋，將作為制定Lansdowne公園與開放空間總體規劃的重要依據。



LANSDOWNE 公園規劃



PLANNING CONTEXT & SURROUNDING PARK NETWORK

Planning Context

The size, location, configuration and objectives of the Lansdowne parks and open space areas were established through a multi-phased Official Community Plan/City Centre Area Plan amendment ("Amendment") process which included public engagement throughout. The focus of the Amendment included:

- Reorganization of the building density across the property so that the majority of the development will be located within walking distance of the Lansdowne Canada Line Station.
- Reconfiguration of the parks spaces so that they are more integrated into the overall site.

The OCP/CCAP amendment was adopted by Council on November 27, 2023. For more information on the OCP/CCAP amendment and overall Lansdowne redevelopment project, please scan the QR code.

LANSDOWNE CENTRE REDEVELOPMENT

For further information about the overall Lansdowne Centre redevelopment project, please scan the QR code.



LANSDOWNE PARKS MASTER PLAN

We want to hear from you! Link to the online survey via Lets Talk Richmond



Lansdowne Master Plan OCP Approved Plan

Surrounding Park Network

The future Lansdowne parks and open space will play a vital role in the surrounding and broader Richmond community, however, there are several other existing and future planned parks within a five to fifteen minute walking distance of the Lansdowne Centre property.

This network of nearby parks consists of several distinct locations, each with its own unique character, programming, and amenities. While imagining the potential character and program for the future Lansdowne parks and open space, consider the relationship they may have to the broader surrounding park network.

For example: Are there programming opportunities that are not currently offered in other nearby parks that could be offered at Lansdowne?

Are there existing programming opportunities in other nearby parks that do not need to be included at Lansdowne?



City of Richmond Park Network



Centre Park



Linear Park

LANSDOWNE PARKS MASTER PLAN



PRCS 181

規劃背景及周邊公園網絡

規劃背景

Lansdowne公園與開放空間區域的大小、位置、布局及規劃目標，是通過多階段的社區規劃大綱/市中心區域規劃 (OCP/CCAP) 修訂流程而確定。整個過程都包含了公眾的廣泛參與。此社區規劃大綱修訂的重點包括：

- 重新分配物業的建築密度，使大部分開發項目位於Lansdowne加拿大線天車站的步行距離之內。
- 重新規劃公園空間，使其與整體場地更加融合。

此OCP (社區規劃大綱) / CCAP (市中心區域規劃) 修訂已於2023年11月27日獲市議會通過。如需了解更多關於OCP/CCAP修訂及Lansdowne整體重建項目的資訊，請掃描下方二維碼。

LANSDOWNE CENTER 重建規劃

掃描瞭解更多關於Lansdowne Centre 重建規劃信息



市議會通過的 Lansdowne 重建規劃

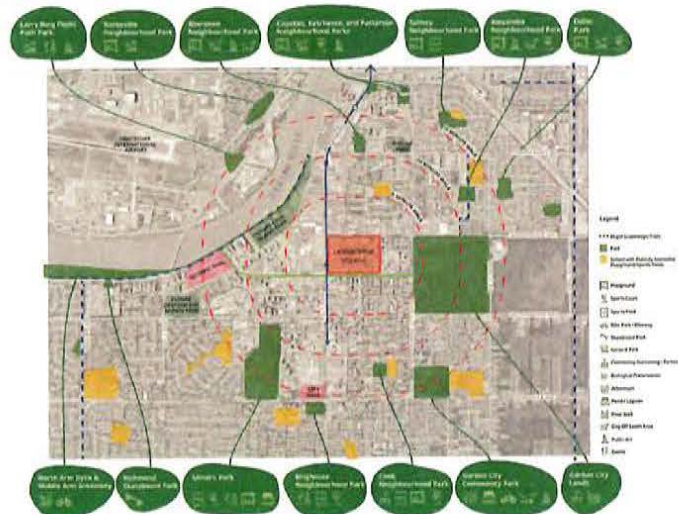
LANSDOWNE 公園規劃

我們希望聽到您的意見！
請訪問網頁上的意見表
Talk Richmond

周邊公園網絡

未來的Lansdowne公園與開放空間，將在周邊及更廣泛的列治文社區中扮演重要角色。然而，在Lansdowne購物中心的5至15分鐘步行範圍內，還存在多個現有及規劃中的公園，共同組成列治文市的公園網絡。

這個公園網絡由多個各具特色的空間組成，每個空間都擁有其獨特的風格、活動規劃及設施。在構思未來Lansdowne公園與開放空間的潛在風格與活動時，不妨考慮它們與周邊更廣泛公園網絡之間的關係。例如：Lansdowne公園是否可以提供其他附近公園沒有的活動機會？其他附近公園已有的活動規劃（如網球場等），是否必要在Lansdowne重複設置？



列治文市公園網絡



LANSDOWNE 公園規劃

LANDSDOWNE PARKS MASTER PLAN

What Guides Our Design

Guiding Principles

Guiding principles were developed during the first phase of the Lansdowne parks and open space planning process, and were adopted by Council on May 8, 2023.

These guiding principles helped inform the development of the three Lansdowne parks and open space master plan options being presented today.

The guiding principles will serve as touchstones when key decisions need to be made about the future development of these parks and open space areas.

LANDSDOWNE PARKS MASTER PLAN



We want to hear from you!
Link to the online survey
via Let's Talk Richmond



CONNECT

- **Inclusive for all:** Where people of all ages, abilities, genders, and backgrounds are welcome to take part with both safety and social connectivity.
- **Variety of spaces:** Where people have diverse opportunities to engage in a variety of public spaces that include a variety of different uses, facilities, and recreational activities.
- **Connected to the City Centre:** A place that is well connected and accessible to the surrounding context and the city centre transit system.

CELEBRATE

- **A gateway to Richmond City Centre:** A regional destination, and a gateway to Richmond City Centre, that uses the public realm to celebrate, showcase, and enhance the city's unique character.
- **Active and eventful:** Where everyone is invited to come together and celebrate through a wide range of recreational, community, and signature events and programming.
- **Honoring local arts, culture, and heritage:** Where Richmond's multi-cultural arts and heritage are showcased and celebrated.

IMAGINE & BUILD THE FUTURE

- **Future ready:** A place with the flexibility and capacity to respond to the future needs of the surrounding community as it grows and evolves.
- **Regenerative:** Where a robust ecological network is integrated to address environmental challenges such as climate change while restoring natural and environmental systems.
- **Prepared to adapt:** A place that can be adapted to accommodate and embrace future development and management practices, technologies, and needs.

THRIVE

- **Health and wellness:** Where people of all ages and abilities have opportunities to thrive through inclusive, year-round amenities that offer health and wellness, play, and physical activity.
- **Ecologically integrated:** A robust ecological network centered on restoration, thriving within the urban context.
- **Sense of safety:** Where a sheltered and cared-for set of public places allow people to thrive in a welcoming environment with a strong sense of safety and comfort.

Lansdowne Parks Master Plan Guiding Principles

What Shapes Our Design

Design Themes

Key design themes began to emerge, based on the guiding principles, objectives, background studies, related City plans and strategies, site context and analysis.

- Nature, ecology and sustainability.
- Innovation, wellness and vitality.
- Arts, culture and heritage.

These themes guided the development of the parks master plan concept options presented today and are integrated into each to varying degrees, shaping their overall design approach, character, and program.

NATURE, ECOLOGY AND SUSTAINABILITY

This theme is rooted in Richmond's unique ecology and the importance of climate resilience within the community. The landscape character draws inspiration from the dynamic hydrology and ecosystems of the Fraser River delta; planting zones shape and frame key program areas, creating a public realm defined by meandering, serpentine pathways that weave through and connect diverse, active community spaces. Rainwater capture areas mimic the natural processes of the river's floodplain, holding water on-site, while other water features showcase sustainable practices that minimize water waste. Large mounded planting areas and pollinator meadows enhance biodiversity and offer sensory-rich garden spaces. Throughout the public realm, interpretive public art highlights themes of rainwater capture, pollinators, and bog flora and fauna, immersing visitors in Richmond's ecological story.

INNOVATION, WELLNESS AND VITALITY

This theme builds on Richmond's Climate Action Goals to support innovative climate resilient solutions that promote health, wellness, and community connection. A series of water-capturing pavilions and rainwater infrastructure features create cooling refuges and serve as organizational elements in the public realm design. Additionally, urban habitat groves enhance biodiversity and offer shaded nooks, supporting the City's Climate Action Mitigation and Adaptation goals to reduce the impacts of heat stress, improve air quality, and address related health concerns in urban environments. Larger plazas including 'Wow' walks provide immersive experience for visitors of all ages, whereas welcoming gardens and pockets of urban forest cater to intimate gatherings and relaxation. Play and fitness nodes are woven into circulation between parks to offer a range of activities suiting various mobility levels.

ARTS, CULTURE AND HERITAGE

This theme celebrates Richmond's art, culture, and heritage. Various scales of plazas create opportunities for large and small performances, festivals, and markets. Plazas provide opportunities for colourful canopies and interactive art. Vertical multi-functional elements allow for stacked programs including play, covered space, viewing decks, and seating. Outdoor 'rooms' act as 'cooling' features for climate refuge and resilience while displaying small exhibitions and hosting gatherings. Small nodes, art, and interpretive signage is woven within a continuous habitat corridor for birds and bats.



Civic Plaza



Neighbourhood Plaza

LANDSDOWNE PARKS MASTER PLAN



PRCS 183

LANDSOWNE 公園規劃

規劃指導原則

指導原則

Lansdowne公園與開放空間的指導原則已於公園規劃過程的第一階段制定，並於2023年5月8日獲市議會通過。

這些指導原則為今天展示的三個Lansdowne公園與開放空間總體規劃方案提供了重要依據。

在未來開發這些公園與開放空間時，這些指導原則也將作為關鍵決策的重要參考。

LANDSDOWNE 公園規劃

我們希望您的意見！
請通過以下線上問卷
Talk Richmond



連結

- 連結、鼓勵、促進各個社區間聯繫，共同建立對公園開放空間、促進人與自然和諧共處。
- 連結各個社區，促進各個社區間聯繫，共同建立對公園開放空間、促進人與自然和諧共處。
- 連結各個社區，促進各個社區間聯繫，共同建立對公園開放空間、促進人與自然和諧共處。

匯聚

- 匯聚各個社區，促進各個社區間聯繫，共同建立對公園開放空間、促進人與自然和諧共處。
- 匯聚各個社區，促進各個社區間聯繫，共同建立對公園開放空間、促進人與自然和諧共處。
- 匯聚各個社區，促進各個社區間聯繫，共同建立對公園開放空間、促進人與自然和諧共處。

共創

- 共創各個社區，促進各個社區間聯繫，共同建立對公園開放空間、促進人與自然和諧共處。
- 共創各個社區，促進各個社區間聯繫，共同建立對公園開放空間、促進人與自然和諧共處。
- 共創各個社區，促進各個社區間聯繫，共同建立對公園開放空間、促進人與自然和諧共處。

共榮

- 共榮各個社區，促進各個社區間聯繫，共同建立對公園開放空間、促進人與自然和諧共處。
- 共榮各個社區，促進各個社區間聯繫，共同建立對公園開放空間、促進人與自然和諧共處。
- 共榮各個社區，促進各個社區間聯繫，共同建立對公園開放空間、促進人與自然和諧共處。

Lansdowne總體規劃圖

設計主題塑造

設計主題

基於對設計指導原則、目標背景研究、全方位規劃策略以及基地分析的整合，三大核心設計主題逐漸清晰：

- 生態韌性自然共生
- 創新驅動健康活力
- 藝術賦能文化傳承

這些主題指導了今日展示的總體規劃概念方案，並以不同程度整合到每個主題中，塑造了各自的整體設計方法、特色和功能。

生態韌性自然共生

本主題強調對自然環境的生態韌性是社區內氣候韌性的重要基礎。通過從非沙洲三角洲的動態水文與生態系統中汲取靈感，構建生態基礎，重啟人地關係。

根據分區以生物群落為單元界定功能空間，蜿蜒曲折的小徑穿行其間，有機串联多元社區活力節點，雨水收集滲透仿自然水文過程，實現現地雨水，而與雨水集雨利用可持續的水資源管理方式，以減少浪費，結合生態系統營造地用誘導，與花卉植物等共同構建生物多樣性網絡，貫穿公共空間連綿互動設計的技巧，如水循環藝術裝置、綠道花園觀察廊道、濕地生態展覽館、構建沉浸式教育場景，將列治文的生態故事徐徐展開。

創新驅動健康活力

本主題建立在列治文的氣候行動目標之上，支持創新氣候韌性解決方案，以促進健康、福祉並提升社區活力。雨水收集滲透與雨水基礎設施不僅能緩解城市熱島效應，亦是公共空間設計的重要組成元素。此外，城市綠地提升生物多樣性，並營造透視角，呼應城市的氣候行動策略與適應策略，在降低溫室影響、改善空氣品質及應對都市環境健康風險方面發揮積極作用。

公共廣場以其獨特的步道設計和沉浸式體驗吸引眾人目光，透過流暢的動線，富有層次的最優變化與互動式裝置，營造引人入勝的探索旅程。迎東花園與公園城市森林則提供靜謐的綠意空間，適合親切體驗放鬆休憩，遊戲與健身點點巧妙融入公園之間的動線，滿足不同行動能力需求，營造多元化的戶外活動空間。

藝術賦能文化傳承

本主題展現了列治文豐富的藝術、文化與歷史傳承，規模錯落的廣場為大型與小型表演、節慶活動及市集創造多元空間體驗，廣場內設置造型繽紛的天幕裝置與互動藝術的展示，為空間增添藝術性與活力。

靈活的设计允許空間與功能層層堆疊，融入遊戲場、遛狗休憩空間、觀景平台及廣場區，豐富都市空間的層次感。戶外空間不僅作為微氣候與文化展示的平台，也承載小型展覽與社交聚會功能，成為社區交流與文化展示的場域。此外，小型節點空間、藝術裝置及景觀細節巧妙融入連綿的生態廊道，為鳥類、昆蟲等提供合適的棲息環境，同時串聯自然與文化故事，使訪客在探索城市紋理的同時，沉浸於藝術與自然交織的體驗之中。



LANDSDOWNE 公園規劃



CONCEPT MASTER PLAN OPTION 1

INSPIRED BY NATURE

Nature, Ecology and Sustainability

Each concept master plan option incorporates all themes while emphasizing one over the others. Identifying the most supported option will help gauge community values and priorities.

When greater emphasis is placed on the nature, ecology and sustainability theme, then the design approach draws greater inspiration from Richmond's unique ecology and the importance of climate resilience within the community. Serpentine pathways weave through habitat planting and pollinator meadows to connect diverse, active community spaces.

CIVIC PLAZA

FEATURED PROGRAMS

- Community Event Plaza
- Water Feature
- Play Area
- Central Lawn
- Water Feature
- Water Feature
- Water Feature
- Water Feature
- Water Feature

DESIGN APPROACH

- Landscaping featuring drought-tolerant plants and permeable paving through planting.
- Large, irregular, meandering paths that weave through the plaza, creating a sense of movement and discovery.
- Water features integrated into the landscape, providing a sense of calm and connection to nature.
- Planting areas with diverse, native species, including pollinator-friendly plants.
- Seating areas with integrated plantings, creating a sense of enclosure and connection to nature.
- Water features integrated into the landscape, providing a sense of calm and connection to nature.
- Planting areas with diverse, native species, including pollinator-friendly plants.
- Seating areas with integrated plantings, creating a sense of enclosure and connection to nature.



CENTRE PARK

FEATURED PROGRAMS

- Performance Stage
- Destination Playground
- Seating/Activity Zone
- Water Feature
- Multi-Use Sports Court
- Planting Area
- Pollinator Meadow

DESIGN APPROACH

- Performance stage area located below a boardwalk and adjacent to the river, creating a sense of connection to the river and the community.
- Destination playground with water play and a central stage area, creating a sense of community and connection to the river.
- Seating/Activity zone with integrated plantings, creating a sense of enclosure and connection to nature.
- Water features integrated into the landscape, providing a sense of calm and connection to nature.
- Multi-use sports court with integrated plantings, creating a sense of enclosure and connection to nature.
- Planting areas with diverse, native species, including pollinator-friendly plants.
- Pollinator meadows integrated into the landscape, providing a sense of calm and connection to nature.



NEIGHBOURHOOD PLAZA

FEATURED PROGRAMS

- Play Area
- Community Garden
- Water Feature
- Water Feature
- Water Feature
- Water Feature
- Water Feature
- Water Feature
- Water Feature

DESIGN APPROACH

- Landscaping featuring drought-tolerant plants and permeable paving through planting.
- Large, irregular, meandering paths that weave through the plaza, creating a sense of movement and discovery.
- Water features integrated into the landscape, providing a sense of calm and connection to nature.
- Planting areas with diverse, native species, including pollinator-friendly plants.
- Seating areas with integrated plantings, creating a sense of enclosure and connection to nature.
- Water features integrated into the landscape, providing a sense of calm and connection to nature.
- Planting areas with diverse, native species, including pollinator-friendly plants.
- Seating areas with integrated plantings, creating a sense of enclosure and connection to nature.



LINEAR PARK

FEATURED PROGRAMS

- Seating Plaza
- Water Feature
- Water Feature
- Water Feature
- Water Feature
- Water Feature
- Water Feature
- Water Feature
- Water Feature

DESIGN APPROACH

- Landscaping featuring drought-tolerant plants and permeable paving through planting.
- Large, irregular, meandering paths that weave through the plaza, creating a sense of movement and discovery.
- Water features integrated into the landscape, providing a sense of calm and connection to nature.
- Planting areas with diverse, native species, including pollinator-friendly plants.
- Seating areas with integrated plantings, creating a sense of enclosure and connection to nature.
- Water features integrated into the landscape, providing a sense of calm and connection to nature.
- Planting areas with diverse, native species, including pollinator-friendly plants.
- Seating areas with integrated plantings, creating a sense of enclosure and connection to nature.



Concept Focus



栖息自然之城

LANSDOWNE 公園規劃

我們希望聽取您的意見!
請掃描填寫網上問卷 **Lets Talk Richmond**



中央公園

1. 项目背景介绍 2. 项目意义 3. 项目目标 4. 项目范围 5. 项目组织 6. 项目计划 7. 项目预算 8. 项目风险 9. 项目沟通 10. 项目总结	1. 项目背景介绍 2. 项目意义 3. 项目目标 4. 项目范围 5. 项目组织 6. 项目计划 7. 项目预算 8. 项目风险 9. 项目沟通 10. 项目总结
---	---

如音樂會、露天電影、藝術慶典及即興休閒運動等) 提供多元使用機會。公園邊緣設有綠化緩衝帶, 以營造與街道之間的適當分隔, 而小型座椅節點則沿多功能步道、自行車道及環湖步道分佈, 為遊客提供休憩空間。

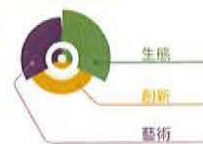
鄧聖恩

主要產品/用途	主要原料
1. 化妝品及護膚品	1. 以天然植物成分為主。大部分原料都來自綠島的自產芝麻。
2. 門戶裝修	2. 以天然植物成分為主。如芝麻油、芝麻油精、芝麻油皂、芝麻油膏。
3. 蠟燭等	3. 芝麻油。
4. 傳統式土產油	4. 芝麻油。
5. 化妝品及護膚品	5. 芝麻油。
6. 蠟燭等	6. 芝麻油。
7. 化妝品及護膚品	7. 芝麻油。
8. 蠟燭等	8. 芝麻油。
9. 化妝品及護膚品	9. 芝麻油。
10. 蠟燭等	10. 芝麻油。

主要活動內容	設計思考
1. 說明書	1. 說明書的用途與設計思考的意義
2. 說明書的種類	1. 說明書的種類與用途 2. 說明書的設計與製作
3. 說明書的製作	1. 說明書的設計與製作 2. 說明書的製作過程
4. 說明書的評語	1. 說明書的評語與標準 2. 說明書的評語與標準
5. 說明書的應用	1. 說明書的應用與範圍 2. 說明書的應用與範圍
6. 說明書的未來	1. 說明書的未來與發展 2. 說明書的未來與發展



核心概念

[illegible]

11

躍動活力之城

LANDOWNE 公園規劃



我們希望聽取您的意見！
請撥兩分鐘填網上問卷 **Lets
Talk Richmond**



中央公園

[illegible][illegible]

1997, 1998, 1999, 2000, 2001, 2002, 2003, 2004, 2005, 2006, 2007, 2008, 2009, 2010, 2011, 2012, 2013, 2014, 2015, 2016, 2017, 2018, 2019, 2020, 2021, 2022, 2023, 2024, 2025, 2026, 2027, 2028, 2029, 2030, 2031, 2032, 2033, 2034, 2035, 2036, 2037, 2038, 2039, 2040, 2041, 2042, 2043, 2044, 2045, 2046, 2047, 2048, 2049, 2050, 2051, 2052, 2053, 2054, 2055, 2056, 2057, 2058, 2059, 2060, 2061, 2062, 2063, 2064, 2065, 2066, 2067, 2068, 2069, 2070, 2071, 2072, 2073, 2074, 2075, 2076, 2077, 2078, 2079, 2080, 2081, 2082, 2083, 2084, 2085, 2086, 2087, 2088, 2089, 2090, 2091, 2092, 2093, 2094, 2095, 2096, 2097, 2098, 2099, 2100, 2101, 2102, 2103, 2104, 2105, 2106, 2107, 2108, 2109, 2110, 2111, 2112, 2113, 2114, 2115, 2116, 2117, 2118, 2119, 2120, 2121, 2122, 2123, 2124, 2125, 2126, 2127, 2128, 2129, 2130, 2131, 2132, 2133, 2134, 2135, 2136, 2137, 2138, 2139, 2140, 2141, 2142, 2143, 2144, 2145, 2146, 2147, 2148, 2149, 2150, 2151, 2152, 2153, 2154, 2155, 2156, 2157, 2158, 2159, 2160, 2161, 2162, 2163, 2164, 2165, 2166, 2167, 2168, 2169, 2170, 2171, 2172, 2173, 2174, 2175, 2176, 2177, 2178, 2179, 2180, 2181, 2182, 2183, 2184, 2185, 2186, 2187, 2188, 2189, 2190, 2191, 2192, 2193, 2194, 2195, 2196, 2197, 2198, 2199, 2200, 2201, 2202, 2203, 2204, 2205, 2206, 2207, 2208, 2209, 2210, 2211, 2212, 2213, 2214, 2215, 2216, 2217, 2218, 2219, 2220, 2221, 2222, 2223, 2224, 2225, 2226, 2227, 2228, 2229, 2230, 2231, 2232, 2233, 2234, 2235, 2236, 2237, 2238, 2239, 2240, 2241, 2242, 2243, 2244, 2245, 2246, 2247, 2248, 2249, 2250, 2251, 2252, 2253, 2254, 2255, 2256, 2257, 2258, 2259, 2260, 2261, 2262, 2263, 2264, 2265, 2266, 2267, 2268, 2269, 2270, 2271, 2272, 2273, 2274, 2275, 2276, 2277, 2278, 2279, 2280, 2281, 2282, 2283, 2284, 2285, 2286, 2287, 2288, 2289, 2290, 2291, 2292, 2293, 2294, 2295, 2296, 2297, 2298, 2299, 2300, 2301, 2302, 2303, 2304, 2305, 2306, 2307, 2308, 2309, 2310, 2311, 2312, 2313, 2314, 2315, 2316, 2317, 2318, 2319, 2320, 2321, 2322, 2323, 2324, 2325, 2326, 2327, 2328, 2329, 2330, 2331, 2332, 2333, 2334, 2335, 2336, 2337, 2338, 2339, 2340, 2341, 2342, 2343, 2344, 2345, 2346, 2347, 2348, 2349, 2350, 2351, 2352, 2353, 2354, 2355, 2356, 2357, 2358, 2359, 2360, 2361, 2362, 2363, 2364, 2365, 2366, 2367, 2368, 2369, 2370, 2371, 2372, 2373, 2374, 2375, 2376, 2377, 2378, 2379, 2380, 2381, 2382, 2383, 2384, 2385, 2386, 2387, 2388, 2389, 2390, 2391, 2392, 2393, 2394, 2395, 2396, 2397, 2398, 2399, 2400, 2401, 2402, 2403, 2404, 2405, 2406, 2407, 2408, 2409, 2410, 2411, 2412, 2413, 2414, 2415, 2416, 2417, 2418, 2419, 2420, 2421, 2422, 2423, 2424, 2425, 2426, 2427, 2428, 2429, 2430, 2431, 2432, 2433, 2434, 2435, 2436, 2437, 2438, 2439, 2440, 2441, 2442, 2443, 2444, 2445, 2446, 2447, 2448, 2449, 2450, 2451, 2452, 2453, 2454, 2455, 2456, 2457, 2458, 2459, 2460, 2461, 2462, 2463, 2464, 2465, 2466, 2467, 2468, 2469, 2470, 2471, 2472, 2473, 2474, 2475, 2476, 2477, 2478, 2479, 2480, 2481, 2482, 2483, 2484, 2485, 2486, 2487, 2488, 2489, 2490, 2491, 2492, 2493, 2494, 2495, 2496, 2497, 2498, 2499, 2500, 2501, 2502, 2503, 2504, 2505, 2506, 2507, 2508, 2509, 2510, 2511, 2512, 2513, 2514, 2515, 2516, 2517, 2518, 2519, 2520, 2521, 2522, 2523, 2524, 2525, 2526, 2527, 2528, 2529, 2530, 2531, 2532, 2533, 2534, 2535, 2536, 2537, 2538, 2539, 2540, 2541, 2542, 2543, 2544, 2545, 2546, 2547, 2548, 2549, 2550, 2551, 2552, 2553, 2554, 2555, 2556, 2557, 2558, 2559, 2560, 2561, 2562, 2563, 2564, 2565, 2566, 2567, 2568, 2569, 2570, 2571, 2572, 2573, 2574, 2575, 2576, 2577, 2578, 2579, 2580, 2581, 2582, 2583, 2584, 2585, 2586, 2587, 2588, 2589, 2590, 2591, 2592, 2593, 2594, 2595, 2596, 2597, 2598, 2599, 2600, 2601, 2602, 2603, 2604, 2605, 2606, 2607, 2608, 2609, 2610, 2611, 2612, 2613, 2614, 2615, 2616, 2617, 2618, 2619, 2620, 2621, 2622, 2623, 2624, 2625, 2626, 2627, 2628, 2629, 2630, 2631, 2632, 2633, 2634, 2635, 2636, 2637, 2638, 2639, 2640, 2641, 2642, 2643, 2644, 2645, 2646, 2647, 2648, 2649, 2650, 2651, 2652, 2653, 2654, 2655, 2656, 2657, 2658, 2659, 2660, 2661, 2662, 2663, 2664, 2665, 2666, 2667, 2668, 2669, 2670, 2671, 2672, 2673, 2674, 2675, 2676, 2677, 2678, 26

[illegible]

公共廣場

- 人口增长
- 农业与畜牧业
- 林业采伐
- 林野火灾
- 地质地质调查
- 地质地质调查
- 地质地质调查
- 地质地质调查

[illegible]

0 东南西北

0 东南西北

0 东南西北

0 东南西北



NEW EAST/WEST ROAD

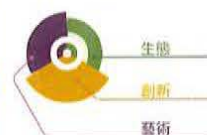
通車用戶中心



離里廣場

PRCS- 188

核心概念



13

概念設計方案 3

文韻共鳴之城

藝術赋能·文化傳承

三個概念規劃方案都在融合主題的基礎上有所側重。對比選出最受歡迎的方案可以幫助理解與評估社區和更需優先考慮的事項。當設計更強調藝術賦能文化傳承的主題時，設計手法將更偏藝術性，並展現對文化豐富的多元文化與歷史傳承。社區活動廣場為大小型表演、節慶活動及市集提供了空間；遊戲式戶外空間則可提供遊玩與休憩的場所，同時作為小型展覽、聚會與文化活動的場地。互動藝術裝置與座椅節點巧妙地融入連續的生態廊道之中，為訪客創造休憩與遊玩的空間。

LANSDOWNE 公園規劃

我們希望您的意見是！
請踴躍填表！
Talk Richmond



CIVIC PLAZA

The Civic Plaza is envisioned to host medium to large-scale events such as **concerts, food truck gatherings, and lively markets**. In addition to the special events, the programming of the plaza includes programming for the everyday with a **seating nooks, pathways and public art**. A dynamic **interactive water feature** adds a playful touch for daily enjoyment and can be turned off to accommodate events.

Civic Plaza will serve as a gateway into the Lansdowne parks from the Lansdowne Canada Line station. Inspired by the Fraser River Delta, mounded **habitat plantings** and **tree plantings** are incorporated to increase the biodiversity of the plaza and provided natural shade during the summer months.

LANDSDOWNE PARKS MASTER PLAN

We want to hear from you!
Link to the online survey
via Lets Talk Richmond

Vote for character!

Below are a range of images, organized by design theme, that illustrate the potential character for the future Civic Plaza. Place one sticker dot on the image that you think best represents your vision for the Civic Plaza.

Vote for programming!

Below are images that represent a range of potential program opportunities for the future Civic Plaza. Place a sticker dot on the top three activities or features that you would like to see or do in the Civic Plaza. If you don't see an activity or feature that you would like to be included in the Civic Plaza, then write or draw your idea on a sticky note and place it on this board.



Vote for the character that best represents your vision for the Civic Plaza!



NATURE, ECOLOGY AND SUSTAINABILITY



INNOVATION, WELLNESS AND VITALITY



ARTS, CULTURE AND HERITAGE



OTHER IDEAS!

Vote for the programming you most want to see in the Civic Plaza!



LARGE, SHADE TREES



INTERACTIVE WATER FEATURE(S)



OPEN FLEXIBLE LAWN



WAYFINDING SIGNAGE



WATER FEATURE



RANGE OF SEATING OPTIONS



HABITAT PLANTING



LANDMARK STRUCTURE



GAMES/SPORTS



MARKET PLAZA



INTERACTIVE PUBLIC ART



COVERED OUTDOOR SPACE



CLEAR, WELCOMING ENTRY



SPACES TO GATHER



BIKE RACKS



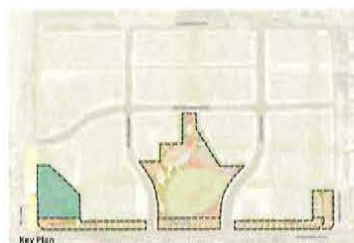
PICNIC AREA



PERFORMANCE STAGE



OTHER IDEAS!



Key Plan



Option 1 - Inspired by Nature



Option 2 - Active Living



Option 3 - Alive with Arts and Culture

LANDSDOWNE PARKS MASTER PLAN

PRCS 191

公共廣場設計主題與規劃

公共廣場的設計定位為可容納中型至大型活動的場所，如戶外音樂會、餐車聚會及熱鬧的市集等。除特色活動外，廣場的日常規劃還包括休憩座椅區、散步徑和公共藝術裝置。動態互動水景為日常生活增添趣味，並可調整開閉時間以適應活動需求。公共廣場作為

Lansdowne加拿大線火車站通往Lansdowne公園的入口門戶，其設計靈感來自非洲沙河三角洲，生態綠地和生態植物巧妙融入設計，增強廣場的生物多樣性，並在炎炎夏日提供舒適的自然綠蔭。

LANSDOWNE 公園規劃

我們希望聽到您的意見！
請掃描或線上觀看 Let's Talk Richmond

為你喜歡的公園風格投票！

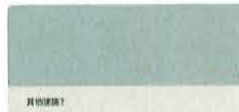
下方圖片按設計主題分類，展示公共廣場可能的未來面貌。請將您最喜愛的圖片貼在下方。

為你喜歡的公園功能投票！

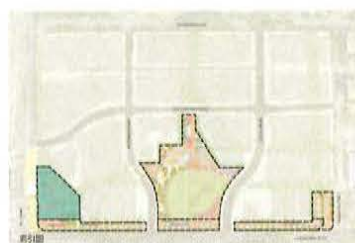
下方圖片展示公共廣場未來可包含的多樣化的活動與設施選項。請將您最喜愛的三項設施或活動貼上圖貼紙！
如果沒有列出您理想的選項，請將您的想法畫在或寫在貼紙上，並貼在下方。



請選擇最符合您對公共廣場期望的設計主題！



請投票選出您最期待在公共廣場看到的設施！



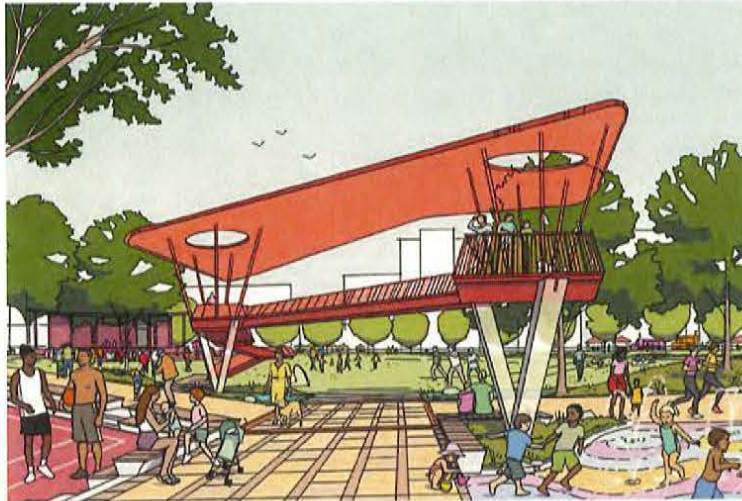
LANSDOWNE 公園規劃



CENTRE PARK

The Centre Park will serve as a city-wide destination that will provide space for diverse cultural experiences. As the heart of the city, it will be accessible and inclusive, and support community growth and needs. The Centre Park will accommodate large dynamic programming including **celebrations, performances, and festivals** while strongly connecting to Richmond's ecological network.

A key aspect to the design of the Centre Park is the accommodation of the everyday use of the park as well as large events. Layers of **habitat tree canopy** and **rainwater management** are balanced with the programming areas. The **destination playground** offers programming for children, families and **multi-use sports courts** and **fitness loops** offer amenities for the community at large.



LANDSDOWNE PARKS MASTER PLAN

We want to hear from you!
Link to the online survey
via Lets Talk Richmond

Vote for character!

Below are a range of images, organized by design theme, that illustrate the potential character for the future Centre Park. Place one sticker dot on the image that you think best represents your vision for the Centre Park.

Vote for programming!

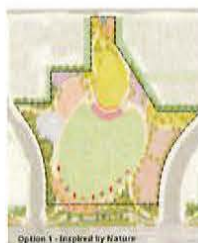
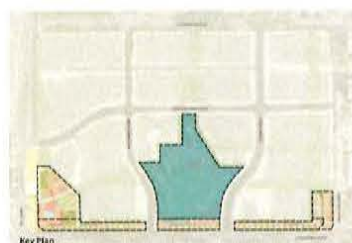
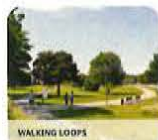
Below are images that represent a range of potential program opportunities for the future Centre Park. Place a sticker dot on the top three activities or features that you would like to see or do in the Centre Park. If you don't see an activity or feature that you would like to be included in the Centre Park, then write or draw your idea on a sticky note and place it on this board.



Vote for the character that best represents your vision for the Centre Park!



Vote for the programming you most want to see in the Centre Park!



中央公園設計主題與規劃

中心公園將作為全市範圍內的目的地公園，為列治文提供多元文化體驗的豐富空間，作為城市的核心，它將具備便捷的可達性與高度的包容性。致力於支持社區的發展與需求，中央公園將能容納大型動態活動，如慶典、表演和節慶慶祝，並與列治文的生態網絡緊密聯繫。中央公園設計的關鍵在於平衡市民日常使用需求與舉辦大型活動。

生態綠化、雨水管理系統與活動空間相得益彰。公園內的特色遊樂場為兒童提供多樣化的遊樂體驗，多功能運動場與健身步道則為社區居民提供多元的運動設施。

LANDSDOWNE 公園規劃

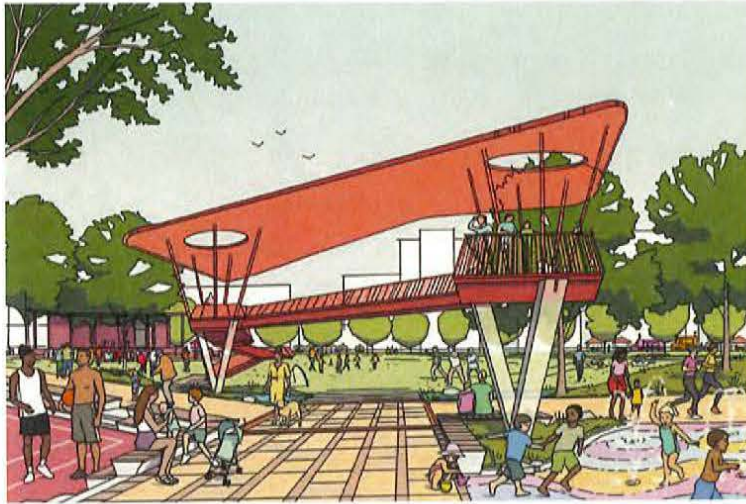
我們希望聽到您的意見！
請掃描或上網頁 Let's Talk Richmond

為你喜歡的公園風格投票！

下方圖片展示中央公園未來可包含的多樣化的活動與設施選項。
請為您最期待的三項設施或活動貼上圖點貼紙！
如果沒有列出您理想的選項，請將您的想法畫在或寫在貼紙上，並貼在下方。

為你喜歡的公園功能投票！

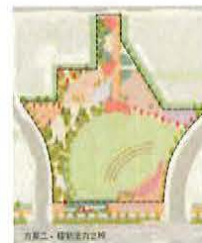
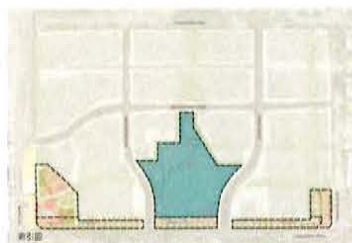
下方圖片展示中央公園未來可包含的多樣化的活動與設施選項。
請為您最期待的三項設施或活動貼上圖點貼紙！
如果沒有列出您理想的選項，請將您的想法畫在或寫在貼紙上，並貼在下方。



請選擇最符合您對中央公園的期望的設計主題！



請投票選出您最期待在中央公園看到的設施！



LANDSDOWNE 公園規劃

NEIGHBOURHOOD PLAZA

The Neighbourhood Plaza will serve as a green urban local gathering space that will provide space for smaller **community events**, small **group gatherings** and passive users. The character of the space is defined by the preservation of large existing **shade trees** and looks to provide intimate spaces for gathering and **cultural activities** in a garden setting.

The programming options in the plaza include **lawn areas**, **nature play spaces**, **event plazas**, **community gardens** and **small recreational courts**. The plaza is envisioned as a serene gathering space shaded by mature, retained trees, providing a natural focal point for socializing and relaxation at the heart of this green oasis.

LANDSDOWNE PARKS MASTER PLAN

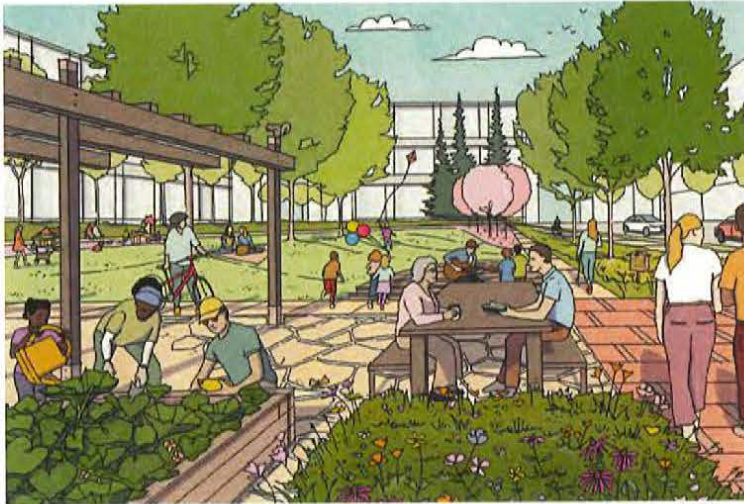
We want to hear from you!
Link to the online survey
via Lets Talk Richmond

Vote for character!

Below are a range of images, organized by design theme, that illustrate the potential character for the future Neighbourhood Plaza. Place one sticker dot on the image that you think best represents your vision for the Neighbourhood Plaza.

Vote for programming!

Below are images that represent a range of potential program opportunities for the future Neighbourhood Plaza. Place a sticker dot on the top three activities or features that you would like to see or do in the Neighbourhood Plaza. If you don't see an activity or feature that you would like to be included in the Neighbourhood Plaza, then write or draw your idea on a sticky note and place it on this board.



Vote for the character that best represents your vision for the Neighbourhood Plaza!



NATURE, ECOLOGY AND SUSTAINABILITY



INNOVATION, WELLNESS AND VITALITY



ARTS, CULTURE AND HERITAGE

OTHER IDEAS

Vote for the programming you most want to see in the Neighbourhood Plaza!



PLAY AREA



COMMUNITY GARDENS



POLLINATOR MEADOW



ORCHARD



SMALL GATHERING/PICNIC AREA



CLEAR + WELCOMING ENTRY



NATURE-INSPIRED PLAY



LARGE, SHADE TREES



OUTDOOR FITNESS STATIONS



SKATING NODES



FEATURED ART



COVERED OUTDOOR SPACE



GALES/SPORTS



SMALL STAGE



EVENTS PLAZA



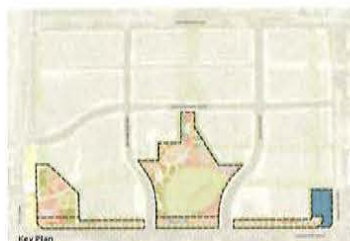
MULTI-PURPOSE LAWN



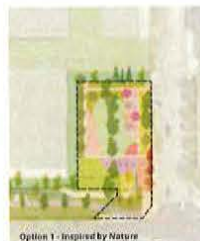
WATER FEATURE



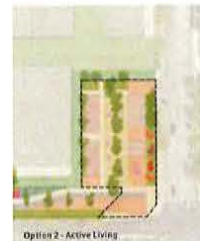
OTHER IDEAS



Key Plan



Option 1 - Inspired by Nature



Option 2 - Active Living



Option 3 - Alive with Arts and Culture

LANDSDOWNE PARKS MASTER PLAN

鄰里廣場設計主題與規劃

鄰里廣場將作為一個城市聚集空間，滿足小型社區活動、小型團體聚會以及尋求寧靜的使用者需求。該空間的特色在於保留現有的大型遮蔭樹，並同時提供親密的聚會空間和小型文化活動場所。營造出如花園般的環境，廣場的規劃結合了各種區域、自然環境、活動廣場、社區花園以及小型休閒運動場等元素。廣場將被設計為一個樹蔭遮蔽下寧靜的聚集場所，成為城市綠洲中的社交與休閒自然焦點。

不同側重的設計主題將塑造各公園及開放空間的獨特風格，並進一步影響公園的整體風貌。舉例說明：若強調生態親和性、自然共生的主題，設計將更深度及取大自然的靈感，廣泛融入綠化空間。若側重藝術與文化傳承的主題，設計將更具藝術性，並展示列治文豐富的多元文化及歷史底蘊。

LANSDOWNE 公園規劃

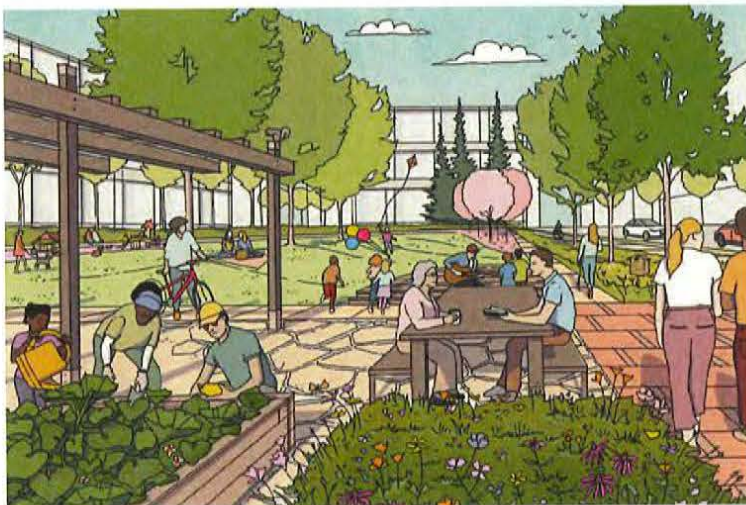
我們希望聽到您的意見！
請將意見填在表格上寄回
Talk Richmond

為你喜歡的公園風格投票！

下方圖片依設計主題分類，展示鄰里廣場可能的未來風貌。
請將您最喜歡的照片貼在表格上寄回鄰里廣場規劃的圖片上！

為你喜歡的公園功能投票！

下方圖片展示鄰里廣場未來可包含的多樣化的活動與設施選項。
請為您最期待的三項設施或活動貼上圓點貼紙！
如果您沒有列出您理想的選項，請將您的想法畫在或寫在表格上，並貼在下方。



請選擇最符合您對鄰里廣場的期待的设计主題！



生態親和自然共榮



創新藝術與活力



藝術與文化傳承



其他建議？

請從左邊出您最期待在鄰里廣場看到的設施！



遊樂區



室內空間



藝術花園



社區廣場



小型開放式綠地



入口廣場



生態環境保護



綠地廣場



社區健身小公園



休閒設施



公園藝術裝置



綠地式戶外空間



活力運動場



小型舞台



運動廣場



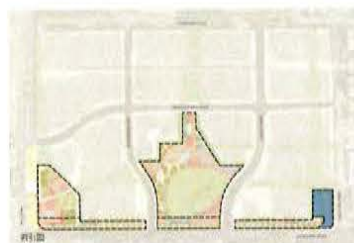
小型劇場



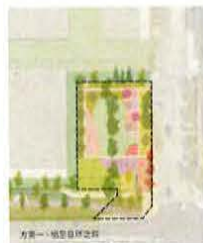
表演、展示花園



其他建議？



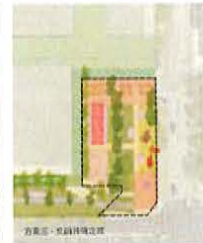
附圖



方案一：生態自然之類



方案二：運動活力之類



方案三：藝術環境之類

LINEAR PARK

The Linear Park will serve as a key connector that unites all of the Lansdowne park spaces and the community at large. The Linear Park will be city-wide between the Garden City Lands and the Richmond Olympic Oval and riverfront. The design looks to include **pathways** that accommodate **varied uses**, including cyclists, rollerblading, skateboarding, pedestrians, wheelchairs and strollers.

Along the Linear Park are a series of **rest nodes** to encourage community connection and comfort for all ages and abilities. These rest nodes include **seating** and the potential for **fitness hubs**, **covered outdoor spaces** and **interactive art**. Habitat is integrated along the entire length of the park and looks to include **rainwater management**, as well as **habitat planting**, and **pollinator meadows** for wildlife species.



LANDSDOWNE PARKS MASTER PLAN

We want to hear from you!
Link to the online survey
via Let's Talk Richmond

Vote for character!

Below are a range of images, organized by design theme, that illustrate the potential character for the future Linear Park. Place one sticker dot on the image that you think best represents your vision for the Linear Park.

Vote for programming!

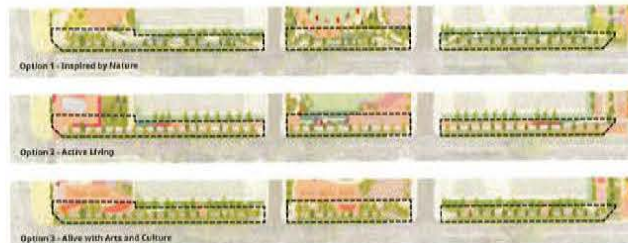
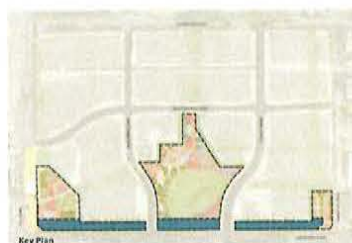
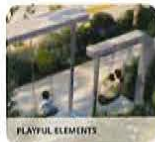
Below are images that represent a range of potential program opportunities for the future Linear Park. Place a sticker dot on the top three activities or features that you would like to see or do in the Linear Park. If you don't see an activity or feature that you would like to be included in the Linear Park, then write or draw your idea on a sticky note and place it on this board.



Vote for the character that best represents your vision for the Linear Park!



Vote for the programming you most want to see in the Linear Park!



綠廊公園設計主題與規劃

綠廊公園將作為 Lansdowne 公園食店區域及鄰近社區的重要連結，成為 Garden City Lane、列治文與列治文港之間的連接地帶。設計中將包括一條步道、騎行徑、滾輪滑道、滑板等活動與行人、輪椅使用者和嬰兒車分開。沿綠廊公園設有一系列休憩點，以促進社區連結和積極活動。這些休憩點將提供座椅、並可包含健身區、遊戲式戶外空間以及多個互動藝術裝置。生態綠廊與公園融為一體，並規劃了包括雨水管理、為鳥類和蝴蝶提供棲息地、以及支持授粉動物的綠牆等。

不同創意的設計主題將塑造各公園及開放空間的獨特風格，並進一步影響公園的整體面貌。舉例說明：若強調生態聯動性、自然共生的主題，設計將更深度汲取大自然的靈感，廣泛融入綠化空間。若側重藝術與文化傳承的主題，設計將更具藝術性，並展示列治文豐富的多元文化及歷史底蘊。

LANSDOWNE 公園規劃
我們希望您的意見！
請親臨網頁上問卷 Let's Talk Richmond

為你喜歡的公園風格投票！

下方圖片按設計主題分類，展示綠廊公園可能的未來面貌。
請將圖片貼在符合您對綠廊公園願景的圖片上！

為你喜歡的公園功能投票！

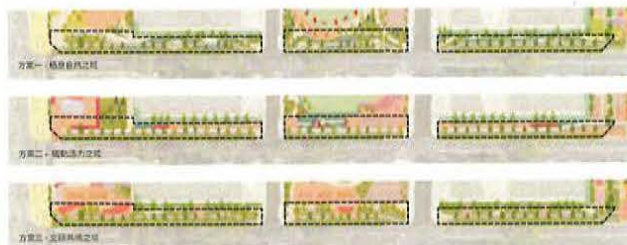
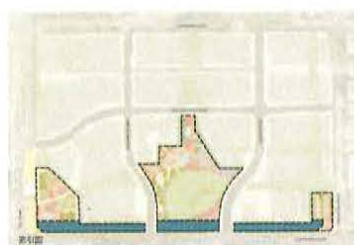
下方圖片展示綠廊公園未來可包含的多樣化的運動與遊戲環境。
請為您最期待的三項設施或活動貼上圖貼紙！
如果沒有列出您理想的設施，請將您的想法畫在或寫在貼紙上，並貼在下方。



請選擇符合您對綠廊公園的期待設計主題！



請投票選出您最期待在綠廊公園看到的設施！



LANSDOWNE 公園規劃



DESIGN FEEDBACK FOR THE FUTURE PARKS

Share Your Ideas!

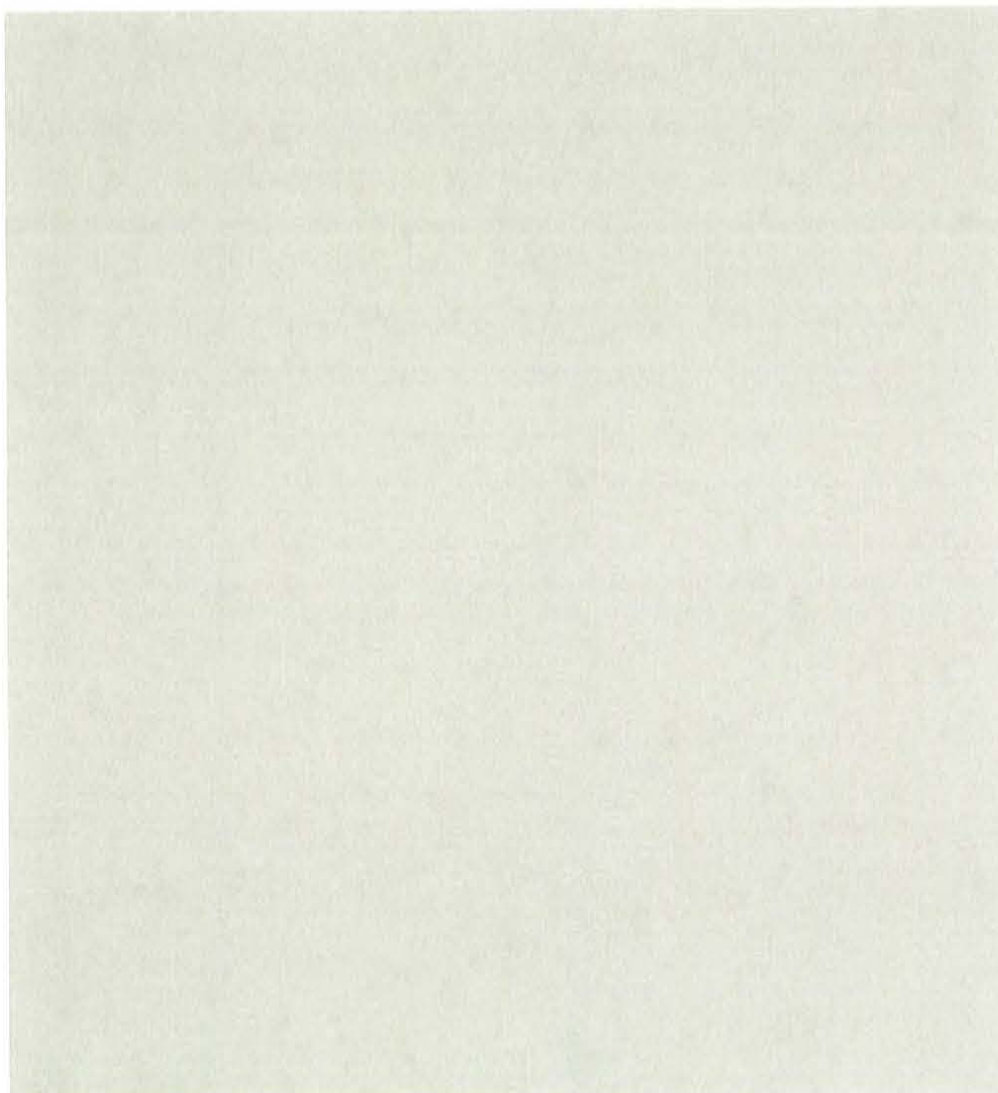
Please share additional ideas, feedback or questions about the future Lansdowne parks and open space. Sketch or write your ideas on a sticky note and place them here.




未來公園設計意見回饋

請分享您的想法!

歡迎提出對Lansdowne未來公園及開放空間的任意構想、意見或疑問!請將您的想法畫在或寫在便利貼上,並貼在下方。



公共廣場



鄰里農場

NEXT STEPS

Next Steps - Lansdowne Parks Master Plan Process



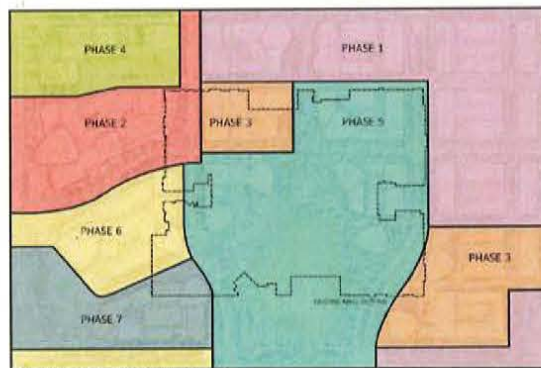
Thank you for your participation and sharing your ideas.

The feedback provided during this engagement process will be incorporated into a Lansdowne parks and open space master plan which will be presented to Council for consideration.

Once adopted by Council, the Lansdowne parks and open space master plan will guide the future phased detailed design and implementation of these pivotal parks and open spaces.



Implementation Phasing



The Lansdowne parks and open spaces will be implemented as the property redevelops in multiple phases over the coming years.

This phasing was established as part of the OCP/CCAP amendment process.

LANDSDOWNE CENTRE REDEVELOPMENT



For further information about the overall Lansdowne Centre redevelopment project, please scan the QR code.

For further information or inquiries about the Lansdowne Parks and Open Space Master Plan process, please contact:

Miriam Plishka, Park Planner
Parks, Planning, Design and Construction
City of Richmond
Email: mplishka@richmond.ca



LANDSDOWNE PARKS MASTER PLAN

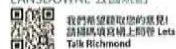


PRCS 201

後續計劃

公園設計深化後續步驟

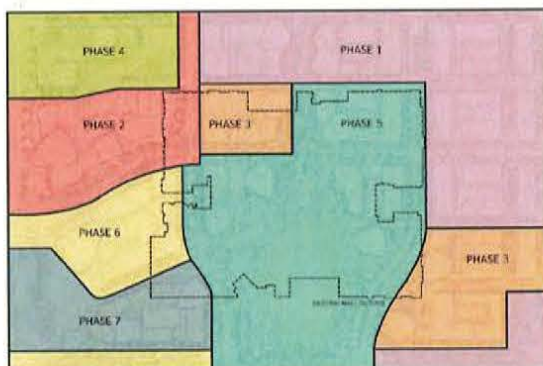
LANSDOWNE 公園規劃



感謝您的參與及分享的寶貴意見。在此次公眾參與過程中收集的反饋意見，將被整合至Lansdowne公園及開放空間總體規劃 (Lansdowne Parks and Open Space Master Plan) 中，並提交市議會審議。待市議會正式通過後，該總體規劃將指導未來對上述核心公園及開放空間區域的分階段深化設計與實施。



公園分階段實施計劃



NOTE: Diagram shows final conditions. Refer to following pages for additional information and space for the purpose of each phase.

Lansdowne 公園與開放空間將隨著 Lansdowne Centre 物業的重新開發，在未來數年內分階段建設。此分階段實施計劃已納入官方社區規劃/市中心區域規劃 (OCP/CCAP) 的修訂程序。

LANSDOWNE CENTER 重建規劃



若想了解更多關於OCP/CCAP修訂及Lansdowne Center 整體重建項目的詳細信息，歡迎掃描二維碼。

如對Lansdowne公園及開放空間總體規劃流程有疑問或需進一步諮詢，請聯繫：

Miriam Plishka, Park Planner
Parks, Planning, Design and Construction
City of Richmond
Email: mplishka@richmond.ca



中央公園



綠廊公園

LANSDOWNE 公園規劃



WHAT WE
HEARD

LANSDOWNE PARKS MASTER PLAN

Summary of Public Engagement

This report summarizes feedback regarding the Lansdowne Parks Master Plan concept options that was received from the public from March to April 2025. Three public in-person open houses with 150+ attendees, and an online survey that generated 220 responses helped gather public insight on the master plan concept options.

The first two open houses were held in the Centre Court at Lansdowne Shopping Centre on Thursday, March 13th, 2025 from 4:00 - 7:00pm and Saturday, March 15th, 2025 from 11:00am - 2:00pm. The third open house was held in the Richmond Cultural Centre on Saturday, March 22nd, 2025 from 11:00am - 2:00pm.

The boards presented at the open houses explained the background of the project and outlined the three master plan options, including site plans, perspective illustrations, and photographic precedent images. All boards were double sided with one side in English and the other in Traditional Chinese. Attendees could engage with the boards by placing stickers on preferred options and adding sticky notes with their general feedback. All open houses also had engagement activities including lego building, origami, and a community collage. Volunteers who spoke English, Cantonese, and Mandarin were available at all three open houses to answer any questions about the master plan process and concept options.

An online survey was open to the public from March 10th 2025 to April 13th, 2025 via Let's Talk Richmond. Respondents could choose their preferred language to take the survey, and digital versions of the open house boards were available to view online in English and Traditional Chinese. Paper copies of the survey were also available at all three open houses, and a QR code was available on the open house boards to bring attendees to the survey website.

The following pages display the results of this public engagement.

220

Surveys filled

150+

Open house
attendees

35

Days of online
surveying

Online Survey Results

We asked:

Master Plan Option 1:

Inspired by Nature

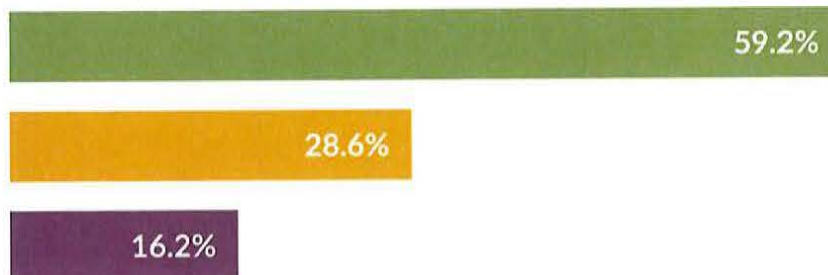
Master Plan Option 2:

Active Living

Master Plan Option 3:

Alive with Arts & Culture

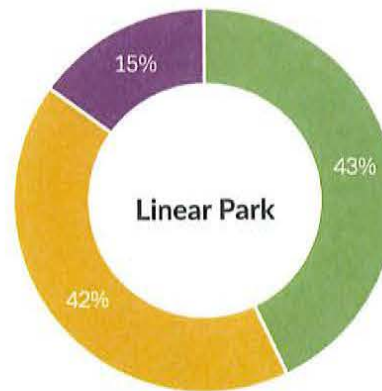
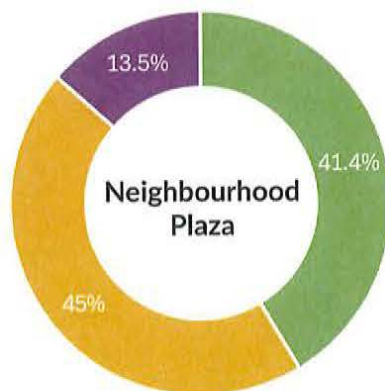
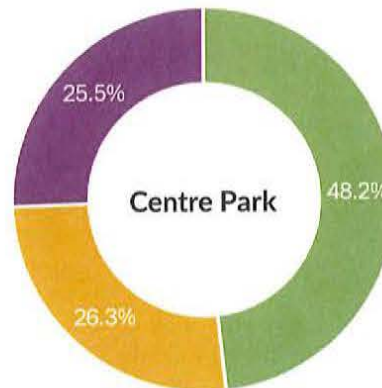
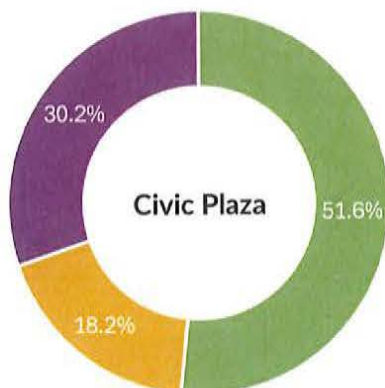
Which concept master plan do you most support?



We asked:

Which theme would you like to see emphasized in the design approach and character of each park area?

- Nature, Ecology and Sustainability
- Innovation, Wellness and Vitality
- Arts, Culture and Heritage



Nature should be
front and center!
After all we are
an island city...by
nature!



Civic Plaza

Which program options would you most like to see included in Civic Plaza?



61%

Large shade trees



54%

A flexible plaza



44%

Covered outdoor space



38%

Water features



36%

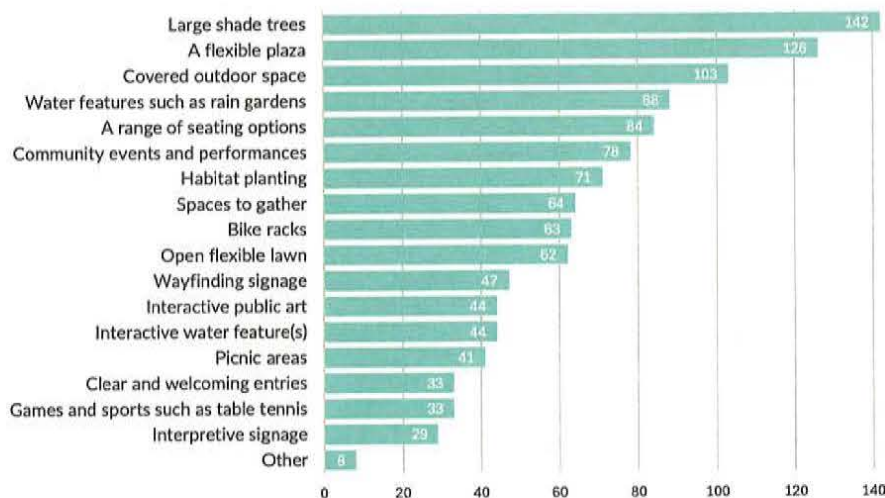
Range of seating



34%

Events & performances

All program options:



Are there any further comments?

A reflection of the history of Richmond. Lansdowne has a unique history that should be noted.

It is important to plan for shaded/covered areas.



Centre Park

Which program options would you most like to see included in Centre Park?



52%

Large shade trees



48%

A flexible plaza



41%

Walking loops



36%

Flowering cherry trees



34%

Open lawn



32%

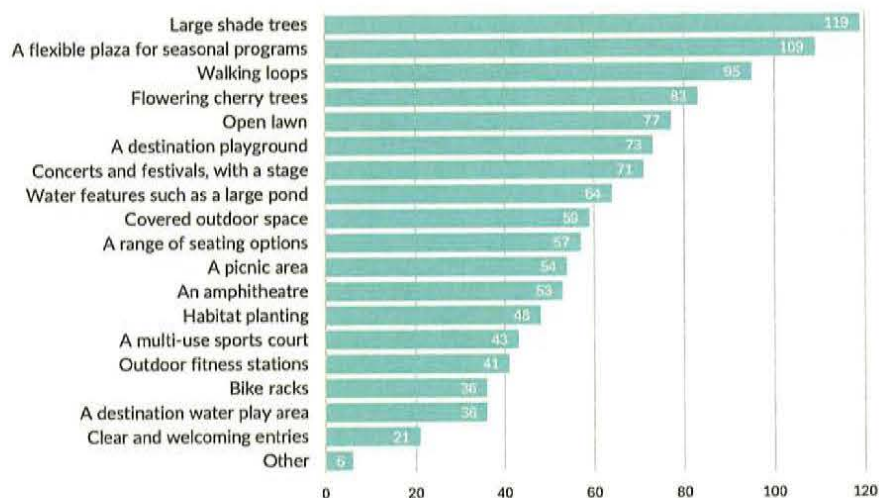
Destination playground



31%

Concerts & festivals

All program options:



Are there any further comments?

An area that could do dual duty as a stage or seating area (i.e. raised area that could serve multiple purposes)

Lansdowne is famous for their annual outdoor theatre and carnival games, perhaps having a space for that can be fun.



Neighbourhood Plaza

Which program options would you most like to see included in Neighbourhood Plaza?



54%

Large shade trees



45%

Small gathering area



39%

Seating nodes



39%

Habitat planting



38%

Water features



37%

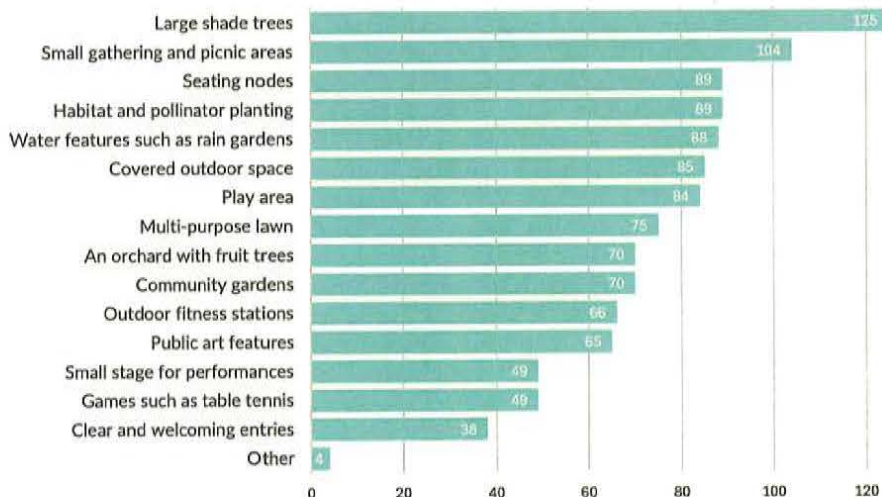
Covered outdoor space



37%

Play area

All program options:



Are there any further comments?

Adult exercising stations.

Small free library book box.

Linear Park

Which program options would you most like to see included in Linear Park?



60%

Large shade trees



60%

Separated pathway network



45%

Feature lighting



41%

Habitat planting



36%

Seating nodes



35%

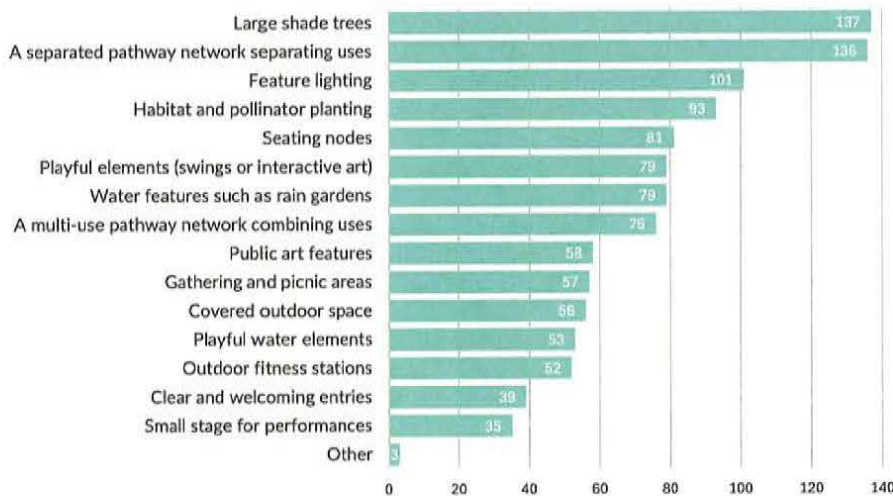
Playful elements



35%

Water features

All program options:



Are there any further comments?

Bicycle and scooter rental options.

Water fountain station for humans and dogs.



Master Plan

Lansdowne Parks Master Plan

The future Lansdowne parks and open space will provide essential green and outdoor space for people of all ages and abilities to gather, play, connect, and celebrate. Together, the Civic Plaza, Centre Park, Lansdowne Linear Park, and Kwantlen Plaza will form the heart of a vibrant and resilient Lansdowne neighbourhood and City Centre, supporting social, physical, and mental well-being for residents and visitors alike.

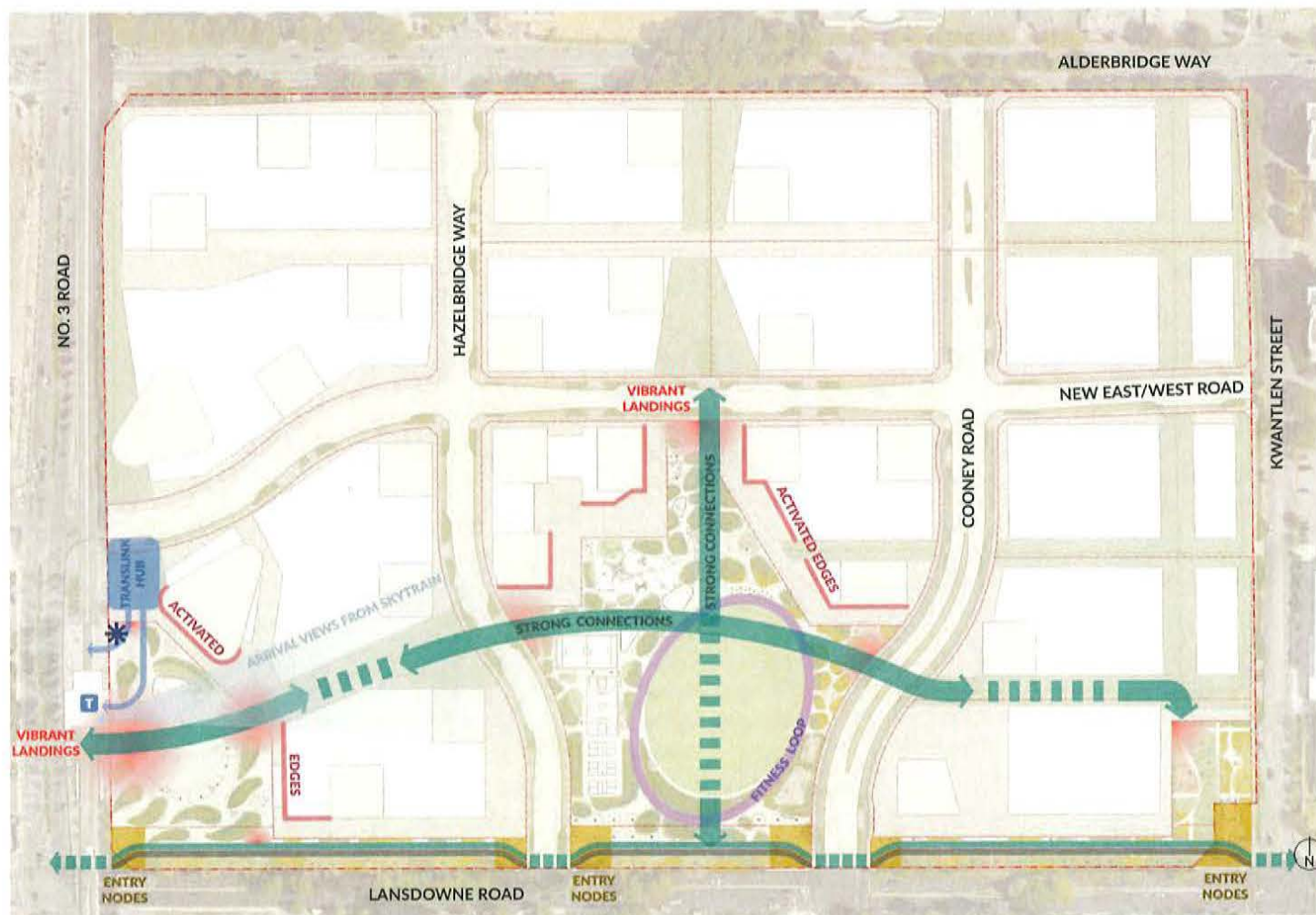
Grounded in community priorities and shaped through inclusive consultation, the Lansdowne Parks Master Plan offers a framework to ensure these spaces grow into destinations that inspire connection, participation, and civic pride, while enhancing Richmond's livability and quality of life.

- 1 Civic Plaza
- 2 Centre Park
- 3 Neighbourhood Plaza
- 4 Linear Park
- 5 Publicly-Accessible Open Space
(Not Included in Parks Master Plan)



Circulation

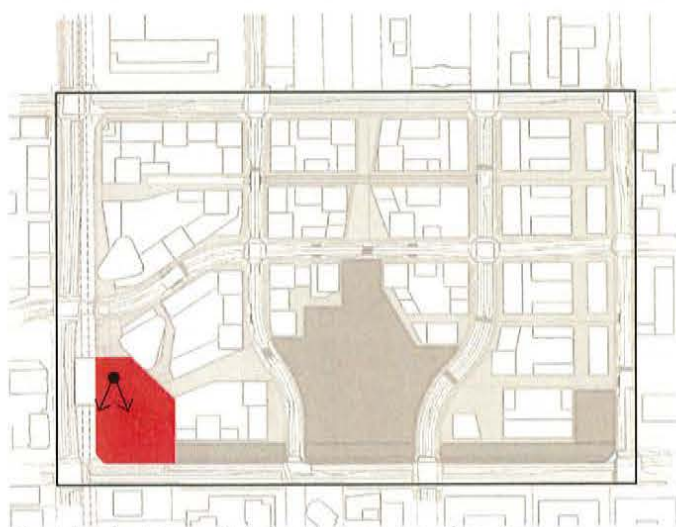
Lansdowne will feature a connected network of pathways, streetscapes, and green links that weave together its parks, plazas, and key destinations while integrating seamlessly with the broader City Centre. These connections will encourage walking, cycling, and transit use, guiding movement from the Canada Line station and surrounding neighbourhoods into the heart of the community and beyond. A city scale mobility hub, directly connected to the Civic Plaza and adjacent to the Lansdowne Canada Line Station, will expand travel choices by integrating transit, passenger drop-off, ride-share, secure bike parking, and shared mobility options—supporting a vibrant, accessible, and sustainable City Centre.



The Lansdowne parks and open space will result in an interconnected network that invites seamless movement between transit, parks, plazas, and destinations, fostering connection and community life.

Design Narrative

The 1.5-acre Civic Plaza is envisioned as a vibrant gathering place for both everyday use and community events such as performances, food truck festivals, and markets. Designed with seating areas, planting, pathways, covered outdoor space and public art, the plaza will provide welcoming spaces for daily activity and connection. At its centre, a dynamic interactive water feature will offer playful enjoyment while remaining adaptable, able to be turned off to accommodate events. Serving as a gateway into Lansdowne from the Canada Line station, the Civic Plaza will be both a destination and a point of arrival. Inspired by the Fraser River Delta, the design incorporates mounded habitat plantings and shade trees, enhancing biodiversity while creating a cooler, more comfortable environment during summer months.



Key plan (not to scale) showing perspective view.



Perspective facing south toward the Lansdowne Canada Line Station. The Civic Plaza will accommodate both daily activities and pedestrian movement, while also having the capacity to host pop-up markets, food truck festivals, art installations, and performances, creating a lively, year-round destination.

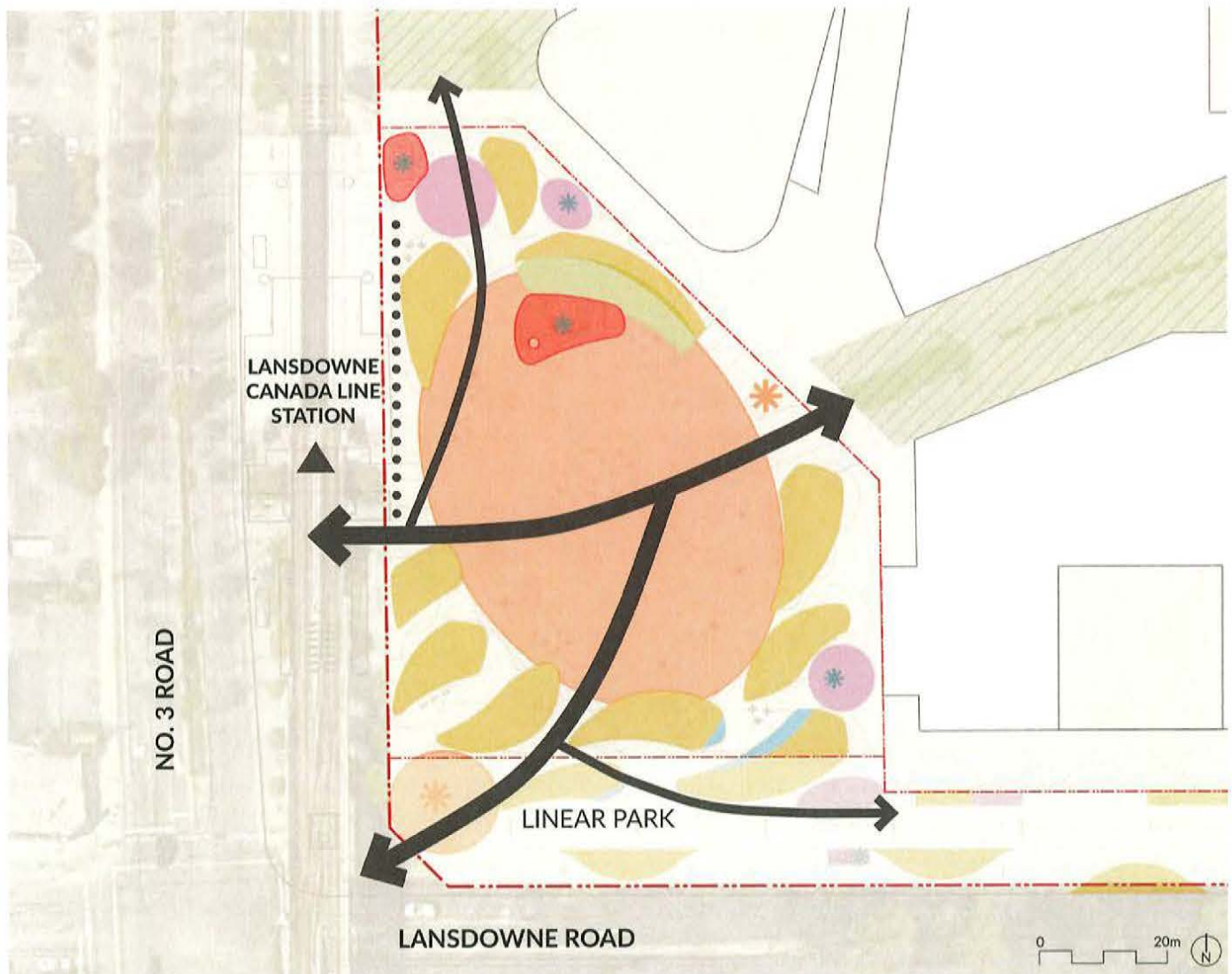
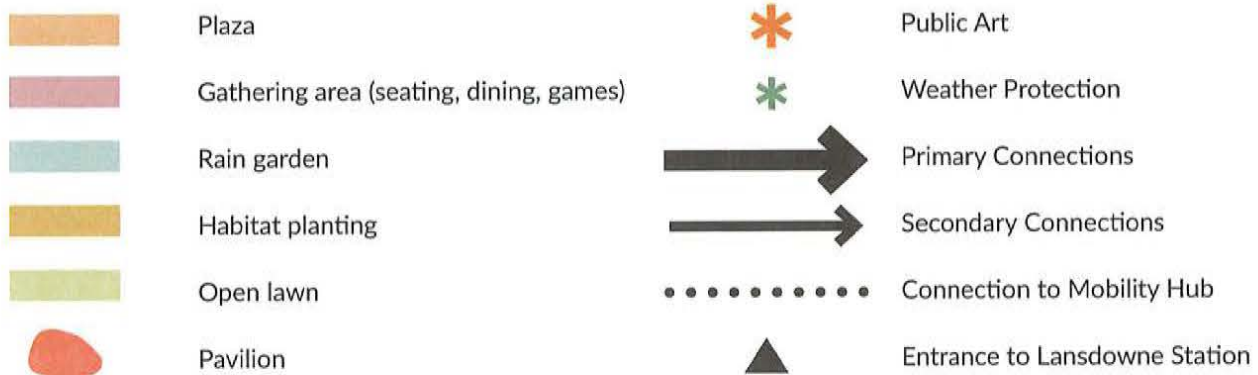
Site Plan: Amenities and Features

- | | | | |
|---|--|----|---|
| 1 | Flexible plaza for circulation, gathering and events | 7 | Open lawn |
| 2 | Shade and flowering cherry trees with habitat planting | 8 | Public art - to be determined through the Lansdowne Public Art Plan and process |
| 3 | Pavilion / covered outdoor space | 9 | Rain garden |
| 4 | Interactive water feature | 10 | Mobility hub and parkade access |
| 5 | Picnic plaza | | |
| 6 | Gateway / entry node | | |



Conceptual plan of the Civic Plaza, providing a key entry point to the Lansdowne major parks network. This plaza is envisioned as a welcoming 'front door' arrival space to Lansdowne Village for locals and visitors.

Programming and Circulation Diagram



The design of the Civic Plaza emphasizes strong east-west pedestrian connections from the Lansdowne Canada Line Station into the future neighbourhood, as well as north-south connections from the Lansdowne Linear Park and streetscape to this multi-modal transit point and future mobility hub south of the station.

Event Hosting Capacity

The Civic Plaza is designed to support everyday use while also accommodating medium- to large-scale events such as performances, food truck festivals, and markets. The diagram below shows how the plaza can flexibly transform for a festival, with stage performances, market tents, and food trucks coming together to create a lively community gathering space. For bigger events, the Civic Plaza can host between up to 5,000 attendees.

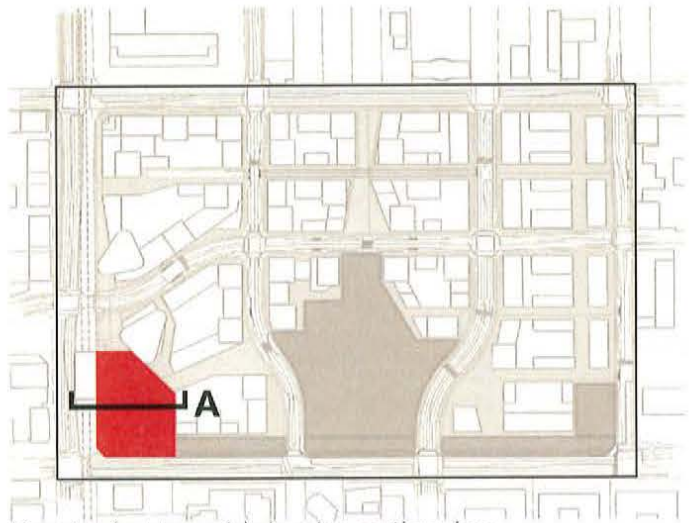
-  Pavilion Structure with Stage
-  10'x10' Market Tent
-  Food Truck



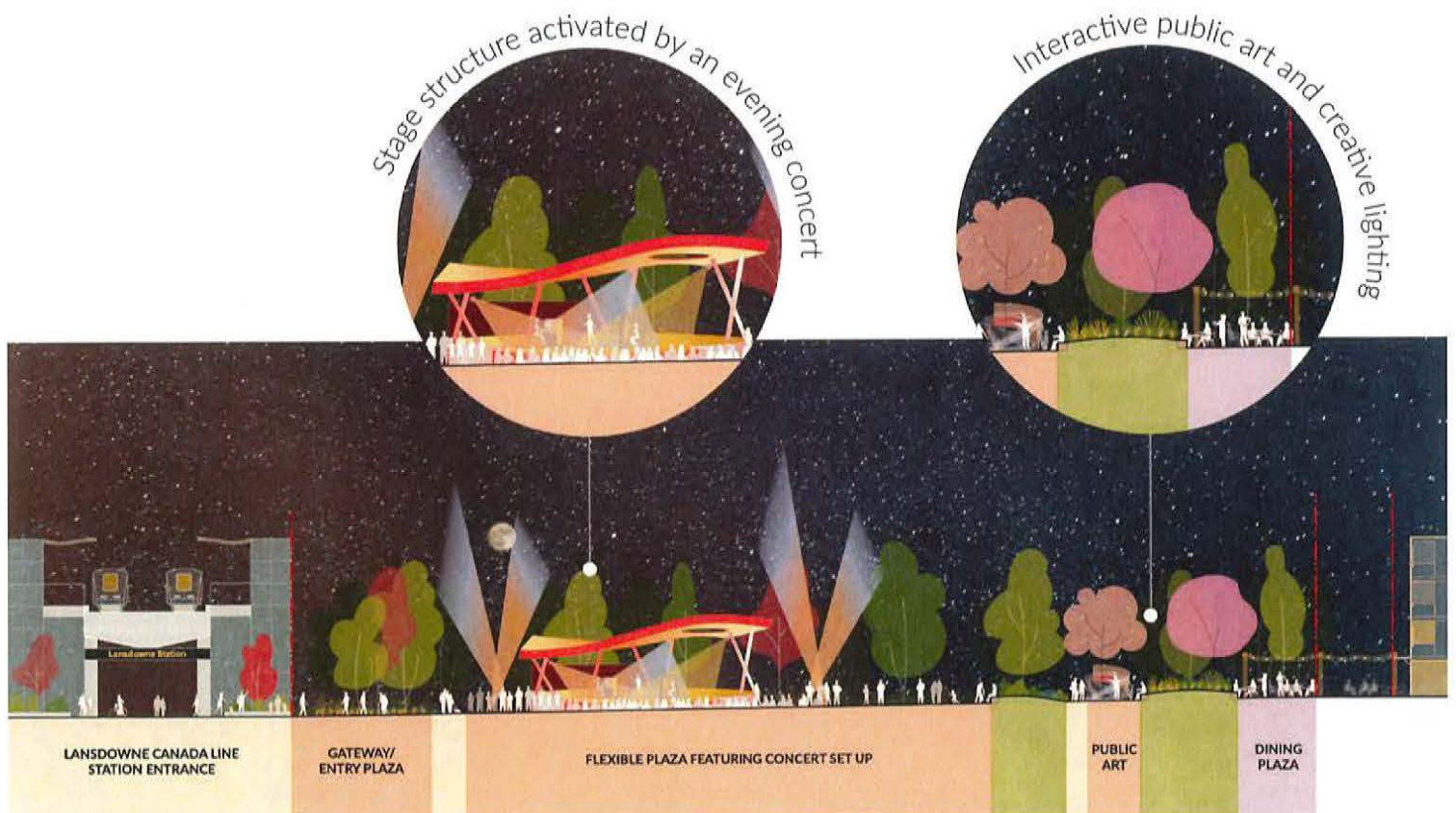
The Civic Plaza is designed as a flexible community hub—welcoming smaller, everyday gatherings while also transforming to host medium- to large-scale events with up to 2,500–5,000 people.

Section A

The Civic Plaza is designed to host a variety of activities, including performances, concerts, outdoor movies, festivals, and cultural events. It will serve as a highlight and key destination along the emerging Lansdowne Linear Park, which will link the Garden City Lands to the Olympic Oval and riverfront.



Key plan (not to scale) showing section view.



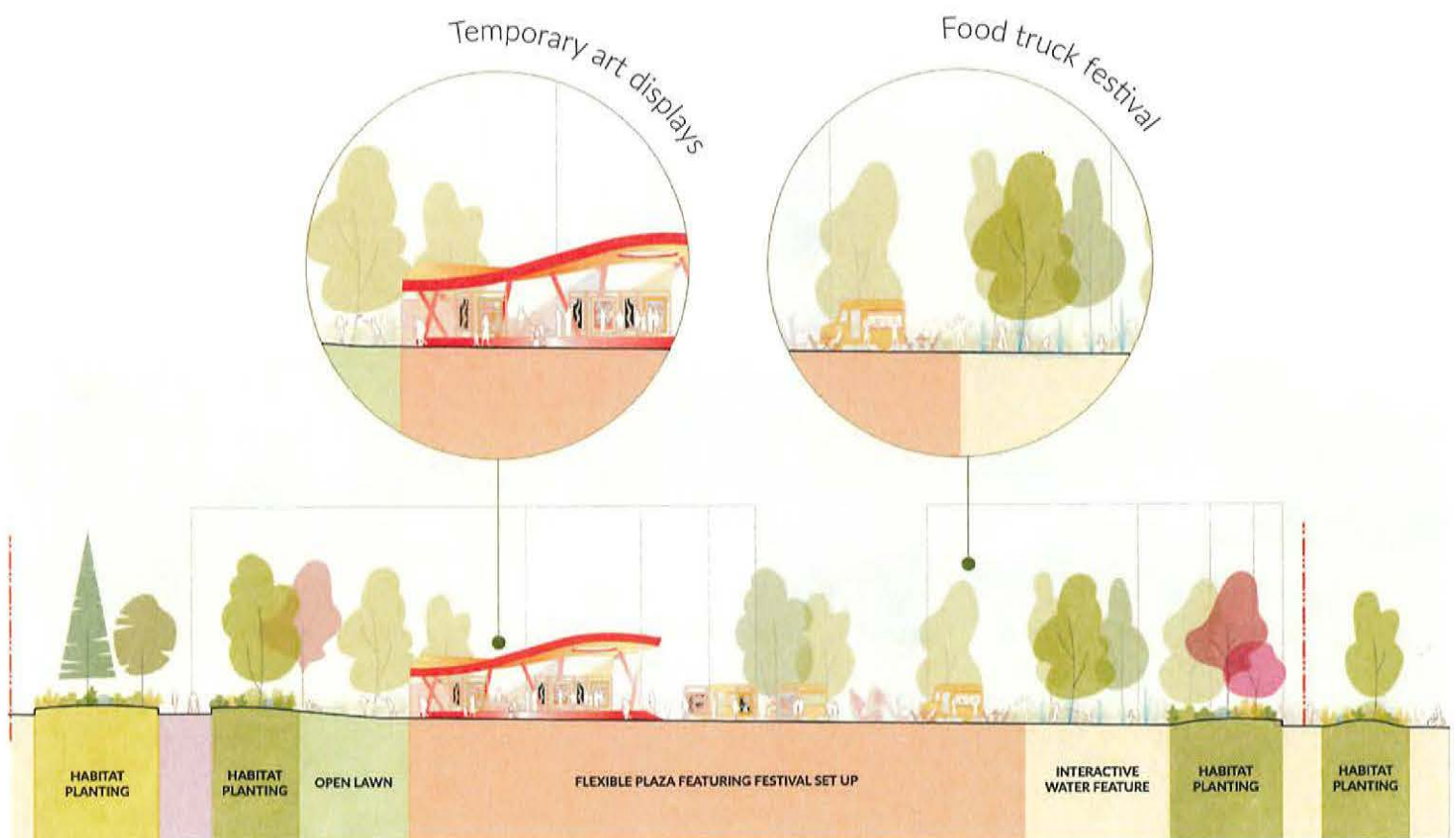
Section through the Civic Plaza looking north. The plaza is designed to be flexible, accommodating seasonal events that celebrate the diverse cultures of Richmond.

Section B

The Civic Plaza's central open space offers flexibility for a wide range of activities, while smaller gathering areas with seating and tables foster everyday social interaction and help bring the edges of future development to life, creating a vibrant and welcoming community hub.



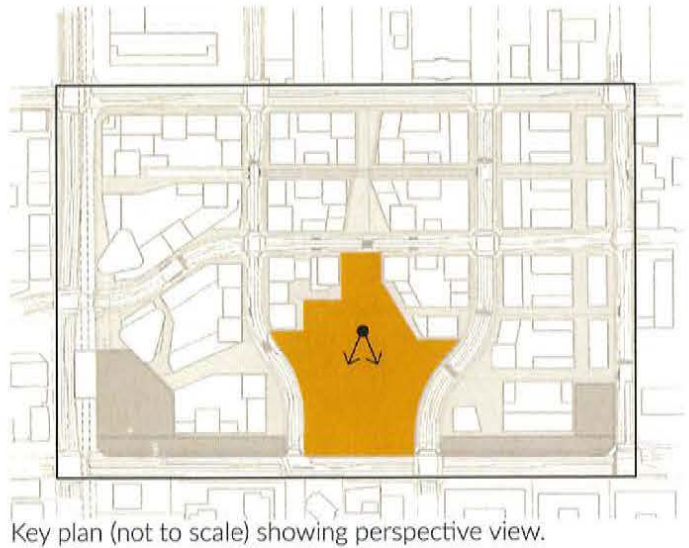
Key plan (not to scale) showing section view.



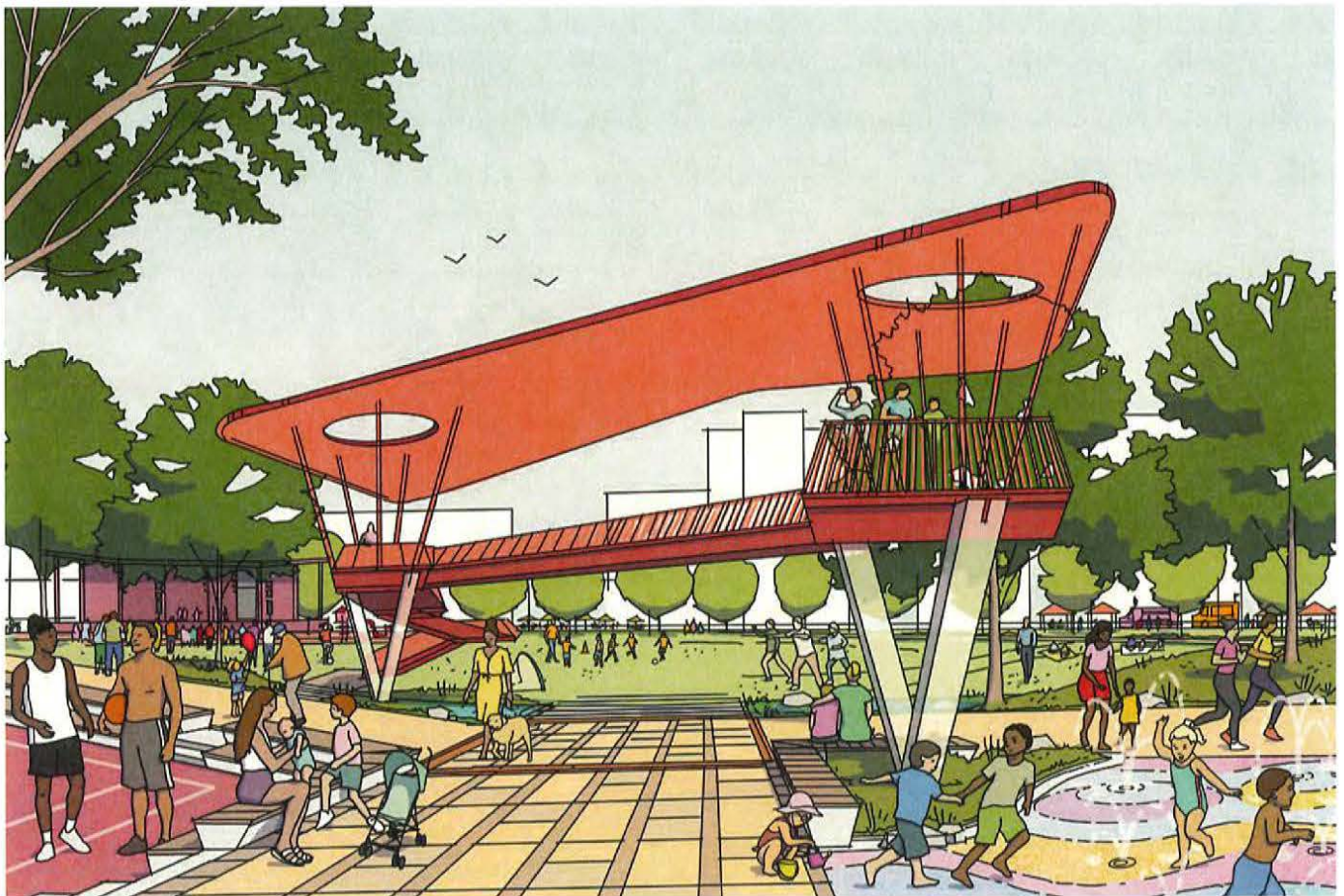
Section through the Civic Plaza looking east. A central pavilion structure would provide weather protection, a stage, and potentially a washroom to serve the large number of daily users to the space.

Design Narrative

The 5-acre Centre Park will be a city-wide and regional destination, offering diverse programming, recreation, events, and cultural experiences while serving as the welcoming heart of the emerging Lansdowne community. Designed to be accessible and inclusive, it will support everyday activities as well as larger special events, including celebrations, performances, and festivals, all while contributing to Richmond's ecological network. The park balances amenities with layers of habitat, tree canopy, and rainwater management to create a resilient and vibrant landscape. Features such as a destination playground, interactive water play, multi-use sports courts, walking loop, varied seating, picnic areas, covered outdoor spaces, and a dog off-leash area ensure the park serves the needs of the entire community.



Key plan (not to scale) showing perspective view.



Perspective of Centre Park looking south toward the open lawn. This park is designed to support a wide range of recreational and social activities for people of all ages, abilities and interests. The central lawn serves as a unifying feature, connecting the different program areas, while planted **PRCS - 217** and natural areas provide gentle separation between zones and create more intimate spaces for everyday use.

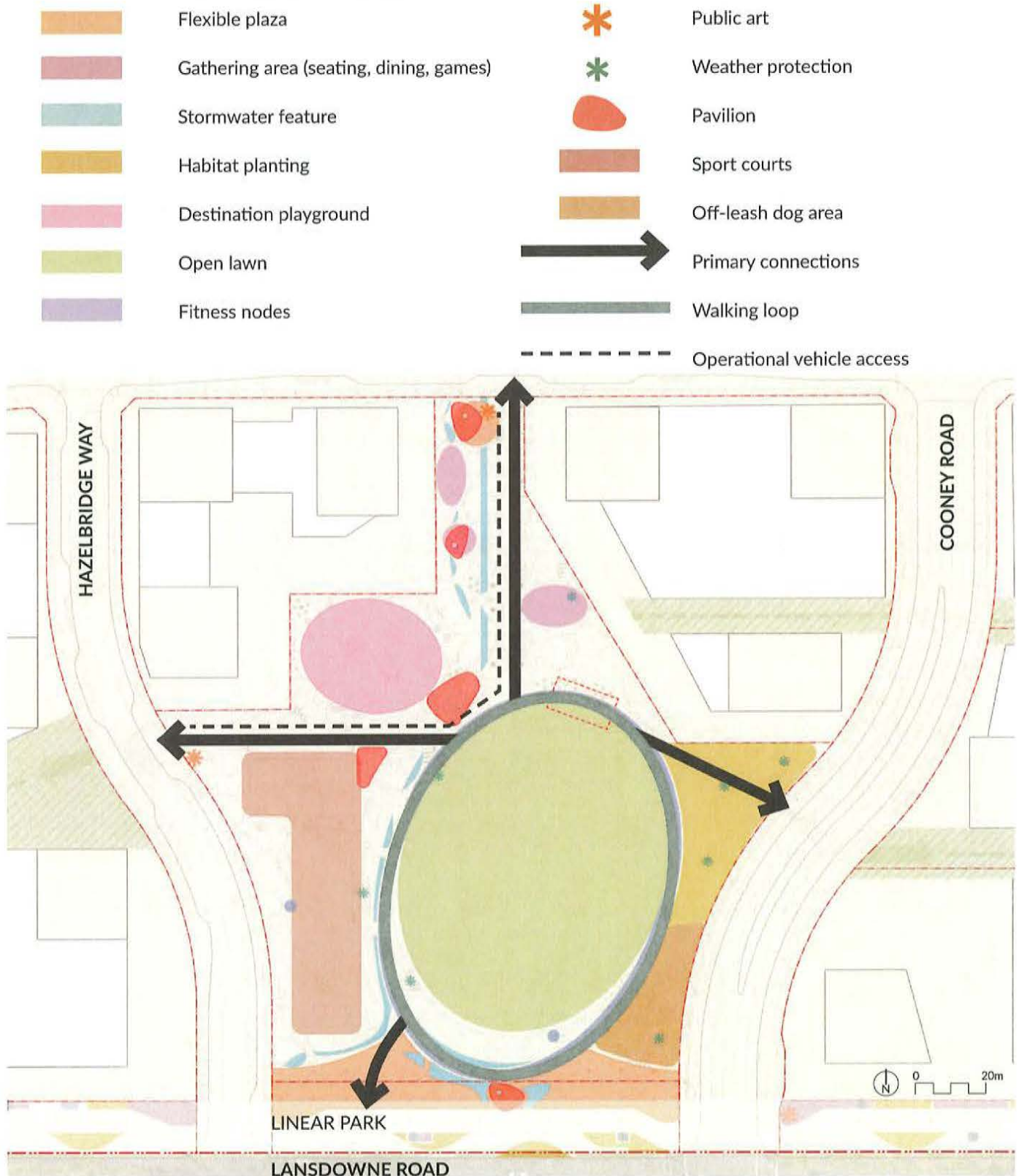
Site Plan: Amenities and Features

- | | | | |
|---|---------------------------------------|----|---|
| 1 | Walking loop | 8 | Multi-use sports courts |
| 2 | Shade trees and habitat planting | 9 | Pavilion / covered outdoor space |
| 3 | Flexible plaza | 10 | Picnic area |
| 4 | Destination playground | 11 | Water play |
| 5 | Potential location for portable stage | 12 | Stormwater feature |
| 6 | Open lawn | 13 | Off-leash dog area |
| 7 | Flowering cherry trees | 14 | Public art - to be determined through the Lansdowne Public Art Plan and process |



The Centre Park is the largest of the four major park spaces and accommodates a range of programming such as a festival lawn, active sport courts, passive green spaces, a destination play area, off-leash dog area, and smaller plaza-like spaces for dining, games, and events.



Programming and Circulation Diagram



Pedestrian-oriented pathways will weave through Centre Park and connect to surrounding linkages, while an operational vehicle route has been designated to accommodate maintenance activities and the set-up and take-down of special events.

Event Hosting Capacity

Centre Park is designed to host both large-scale special events—such as celebrations, performances, and festivals—as well as everyday community activities. The diagram below shows how a major concert could be staged on the open lawn, with the pavilion to the northwest serving as a ticket booth and controlled entry point, and the multi-use sports court adapted as a staging area. At the south end of the park, plaza spaces can be transformed for community gatherings like farmers markets, helping to create a vibrant, year-round public realm. For larger events, the park can accommodate up to approximately 17,000 attendees.

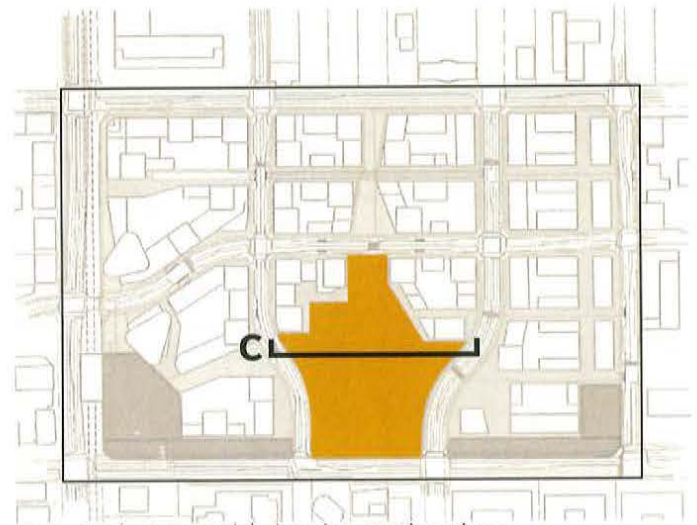
-  Concession / Ticketing Booth
-  10'x10' Market Tent
-  Food Truck
-  Temporary 30'x60' Stage
-  Temporary Staging or Ticketing Area



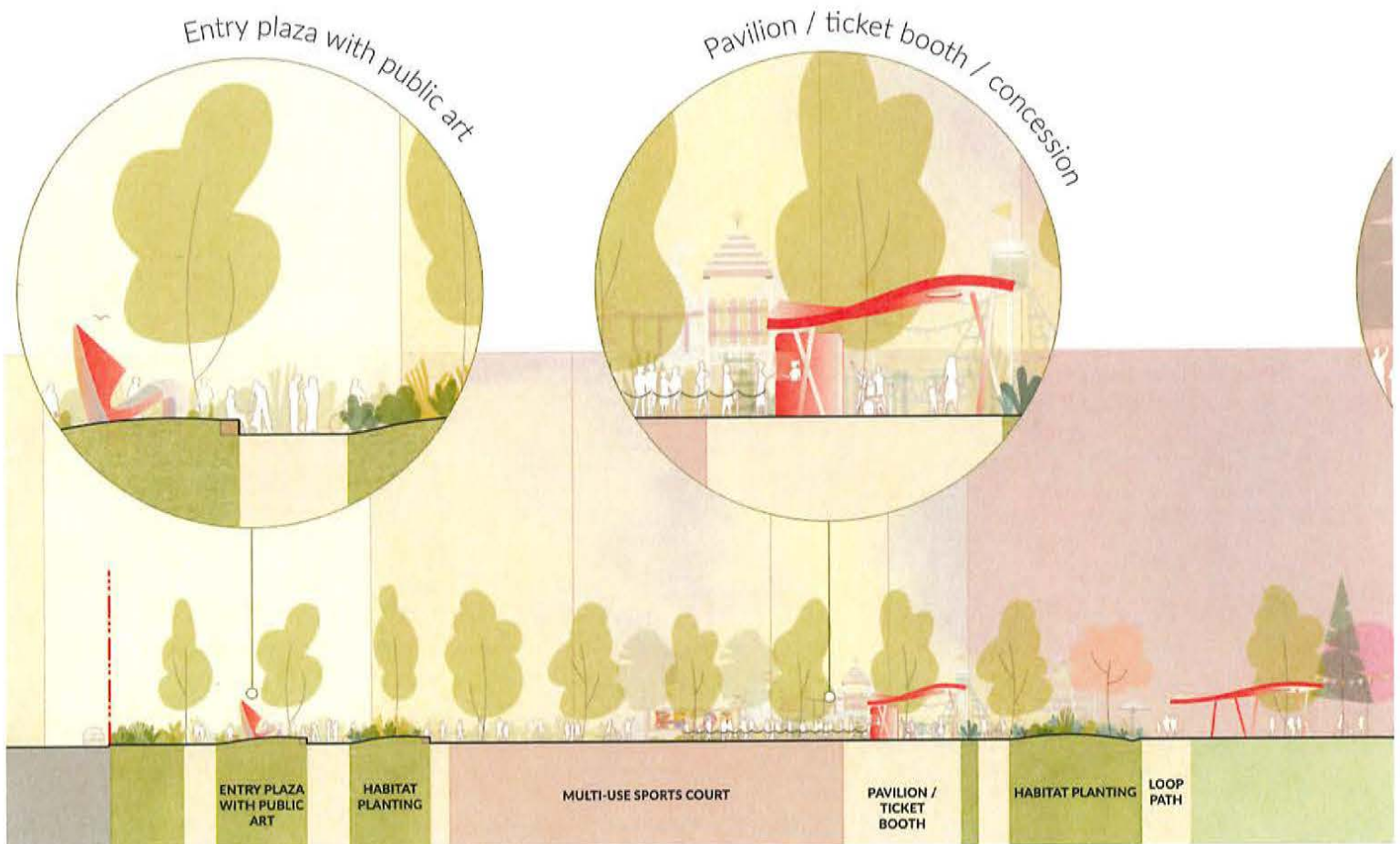
Centre Park is envisioned as one of Richmond's premier festival destinations, hosting concerts, celebrations, and other special events. In alignment with the OCP amendment, for larger events, it has been designed with the capacity to host 8,600 to 17,300 attendees.

Section C

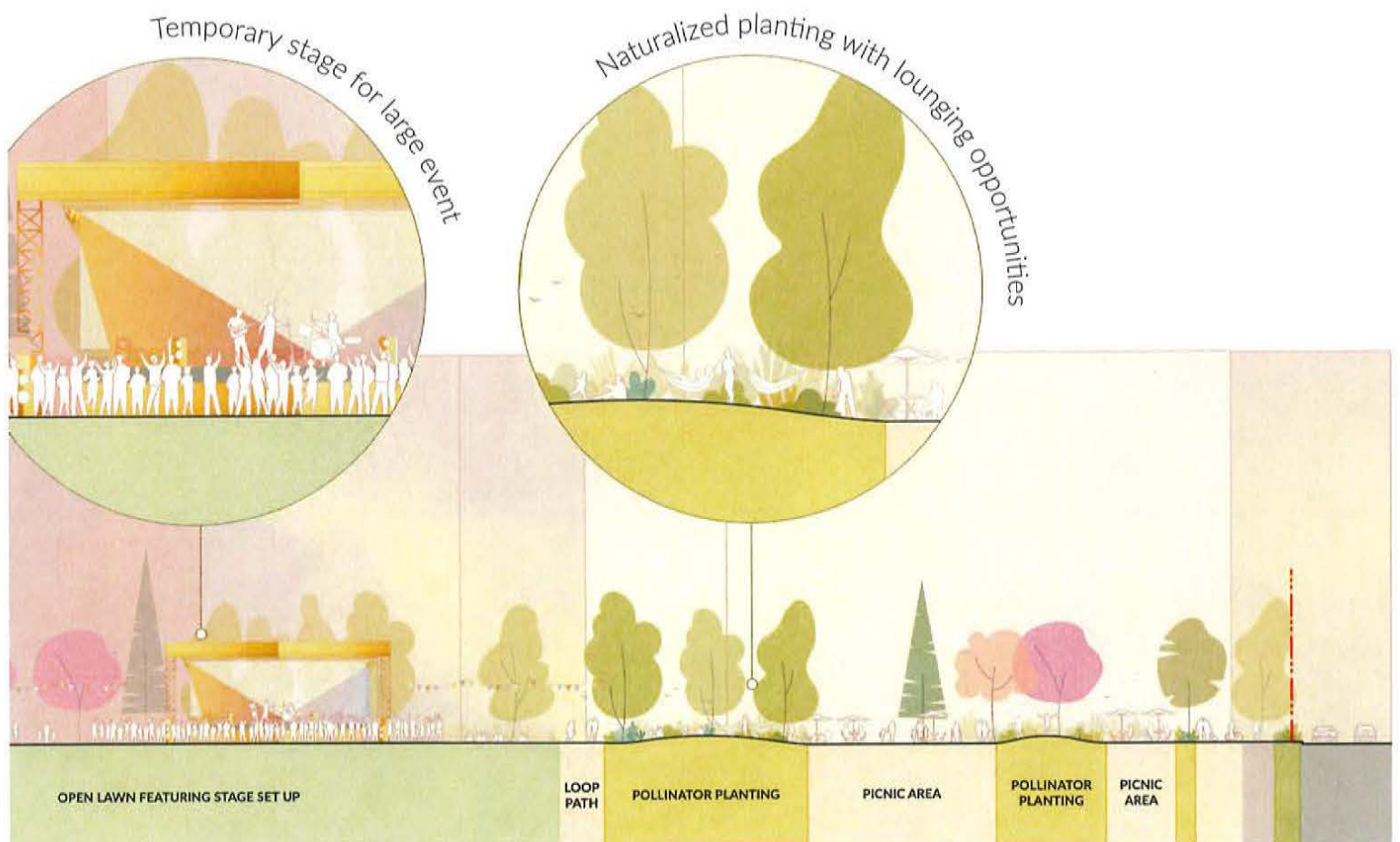
This section through Centre Park illustrates a key design principle for the Lansdowne site with spaces and connections being larger and more open on the west side to accommodate higher pedestrian flows from Lansdowne Station, while on the east side becoming more intimate, transitioning to the smaller-scale character of the surrounding neighbourhood.



Key plan (not to scale) showing section view.

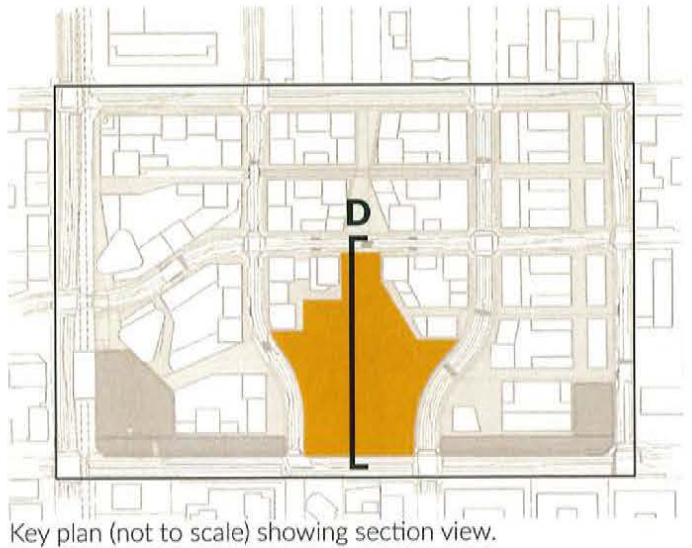


Section view looking north through Centre Park. The central open lawn serves as a flexible space for everyday activities and can also accommodate large festivals and events, with room for a temporary stage when needed.

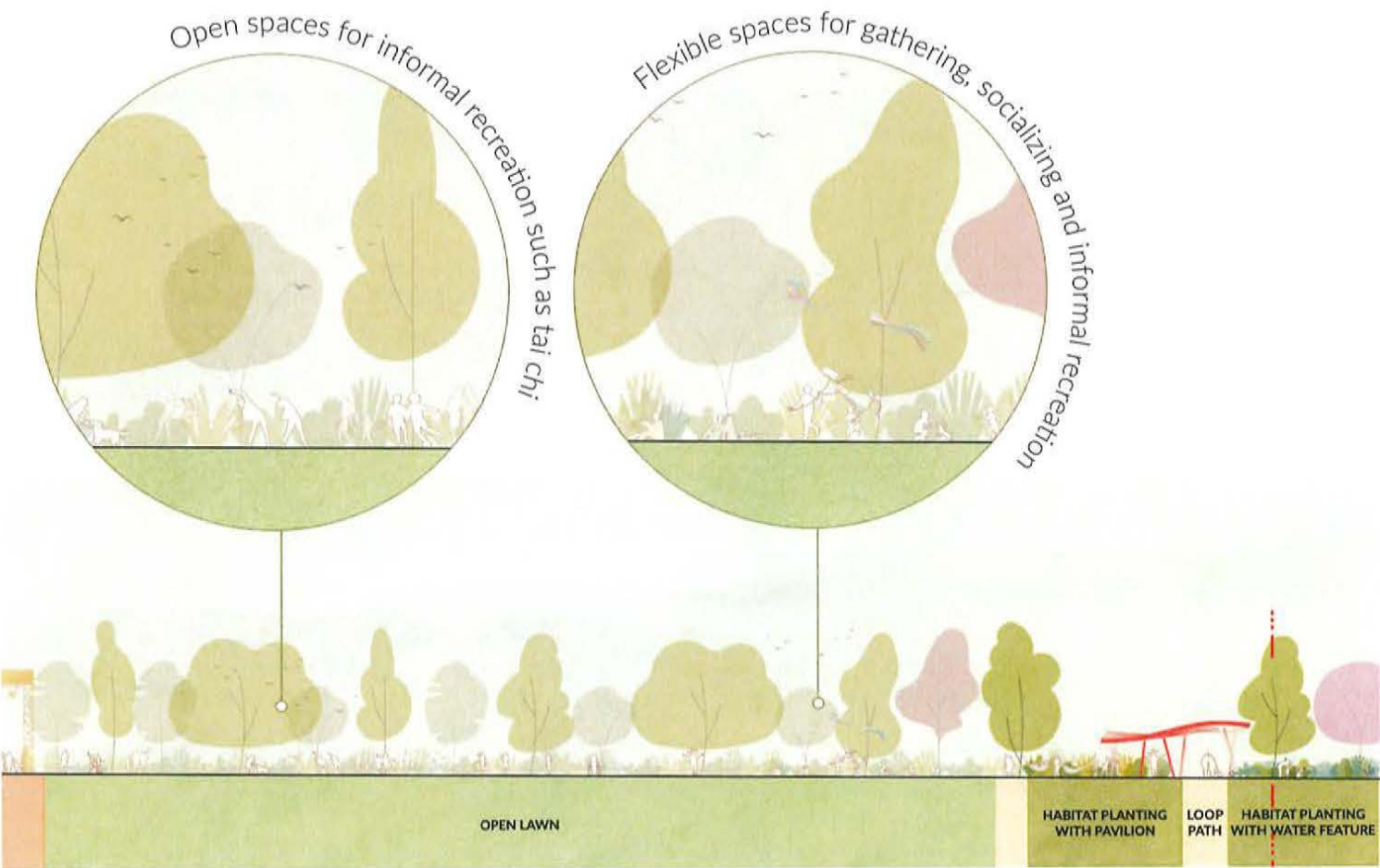


Section D

The north-south spine of Centre Park offers a variety of spaces for play, dining, gathering, relaxation, informal recreation, and connection with nature. It is framed by habitat plantings and stormwater features, and visually linked by a series of pavilions which incorporate amenities such as washrooms, concessions, weather protection, and seating to enhance comfort and enjoyment. At the south end, a grove of flowering cherry trees adds seasonal interest and vibrant spring colour, creating a welcoming entry while connecting Centre Park to the Lansdowne Linear Park.



Section through Centre Park looking east. The park's central spine connects a series of small, plaza-like spaces, iconic pavilions, and a destination play area. Strategically located within a five-minute walk of the Lansdowne Canada Line Station, the park is easily accessible to the community.



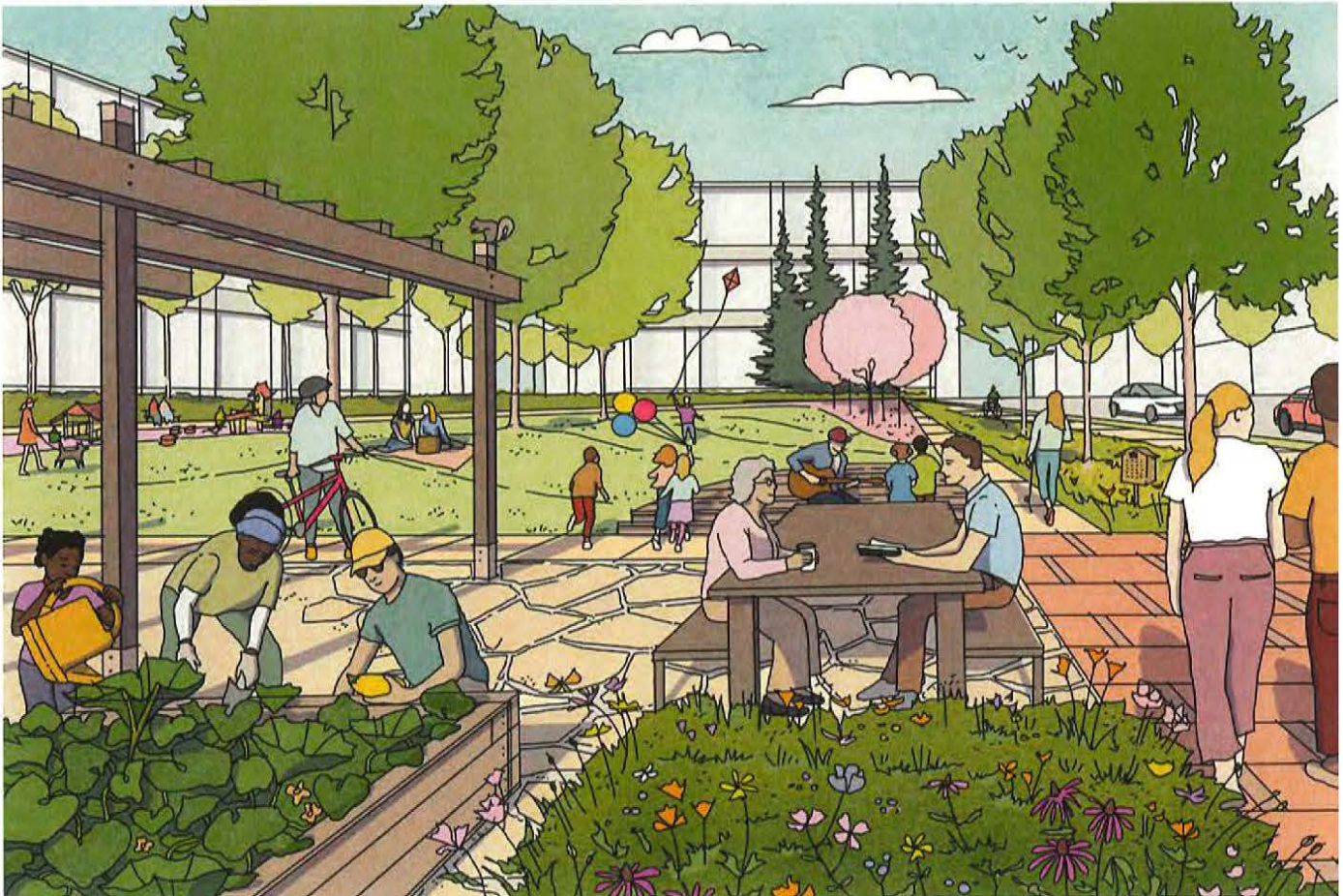
Design Narrative

The 0.42-acre Neighbourhood Plaza will serve as a green, urban space for daily activities, intimate group gatherings, and informal recreation as well as smaller community events. Its character is defined by the preservation of large, existing shade trees, creating a garden-like setting for cultural activities and social interaction.

Programming and features in the plaza will include a neighbourhood-scale playground, a covered plaza with seating and tables, community gardens, small recreational courts, and flexible lawn areas. Shaded by mature trees, the plaza is envisioned as a serene and welcoming green oasis, fostering relaxation, connection, and everyday enjoyment at the corner of the local Lansdowne community.



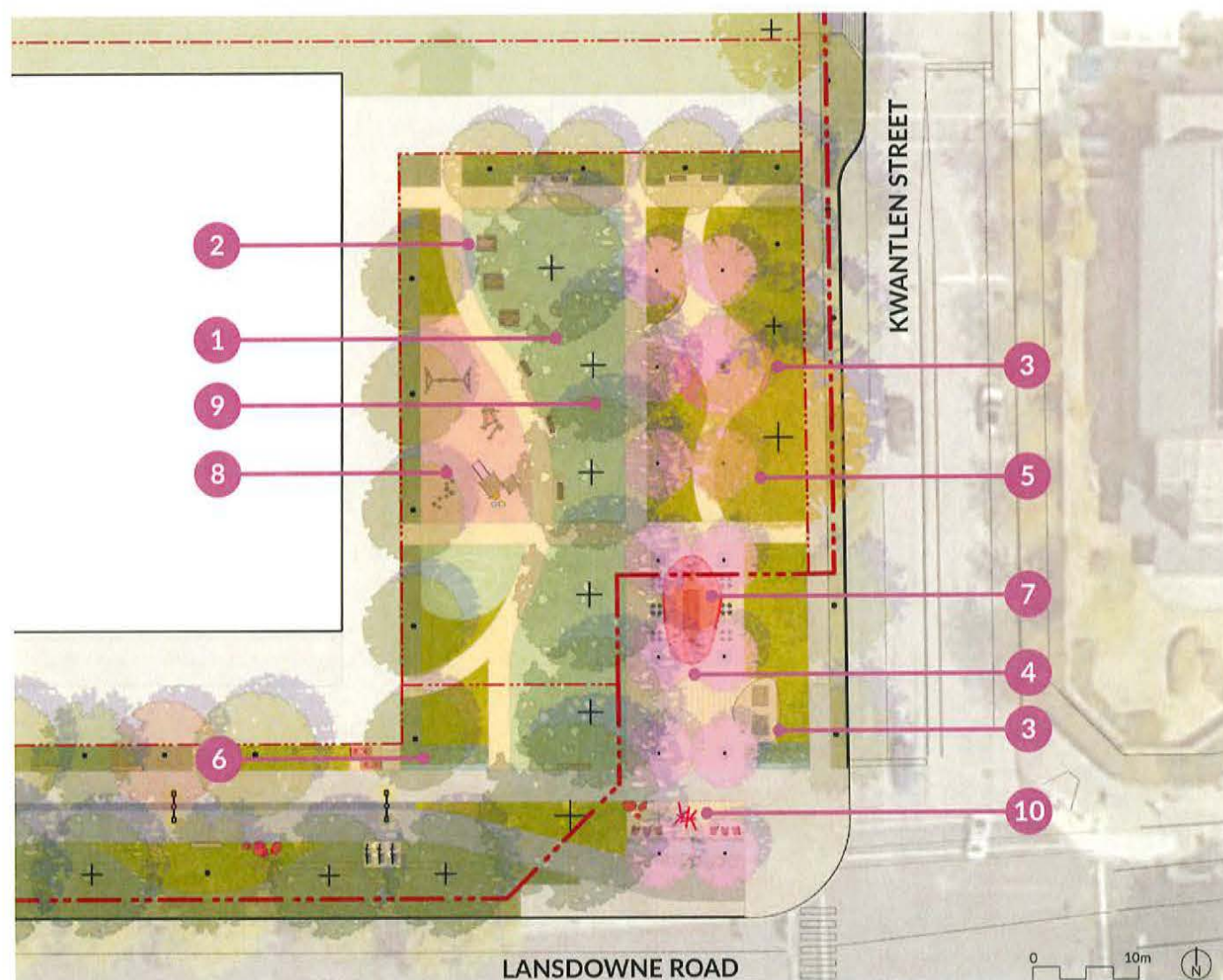
Key plan (not to scale) showing perspective view.



Perspective view of the Neighbourhood Plaza looking north. This garden-like space provides an intimate neighbourhood gathering area, featuring mature shade trees, a small play area, and spaces for dining, seating, and small-scale community events.

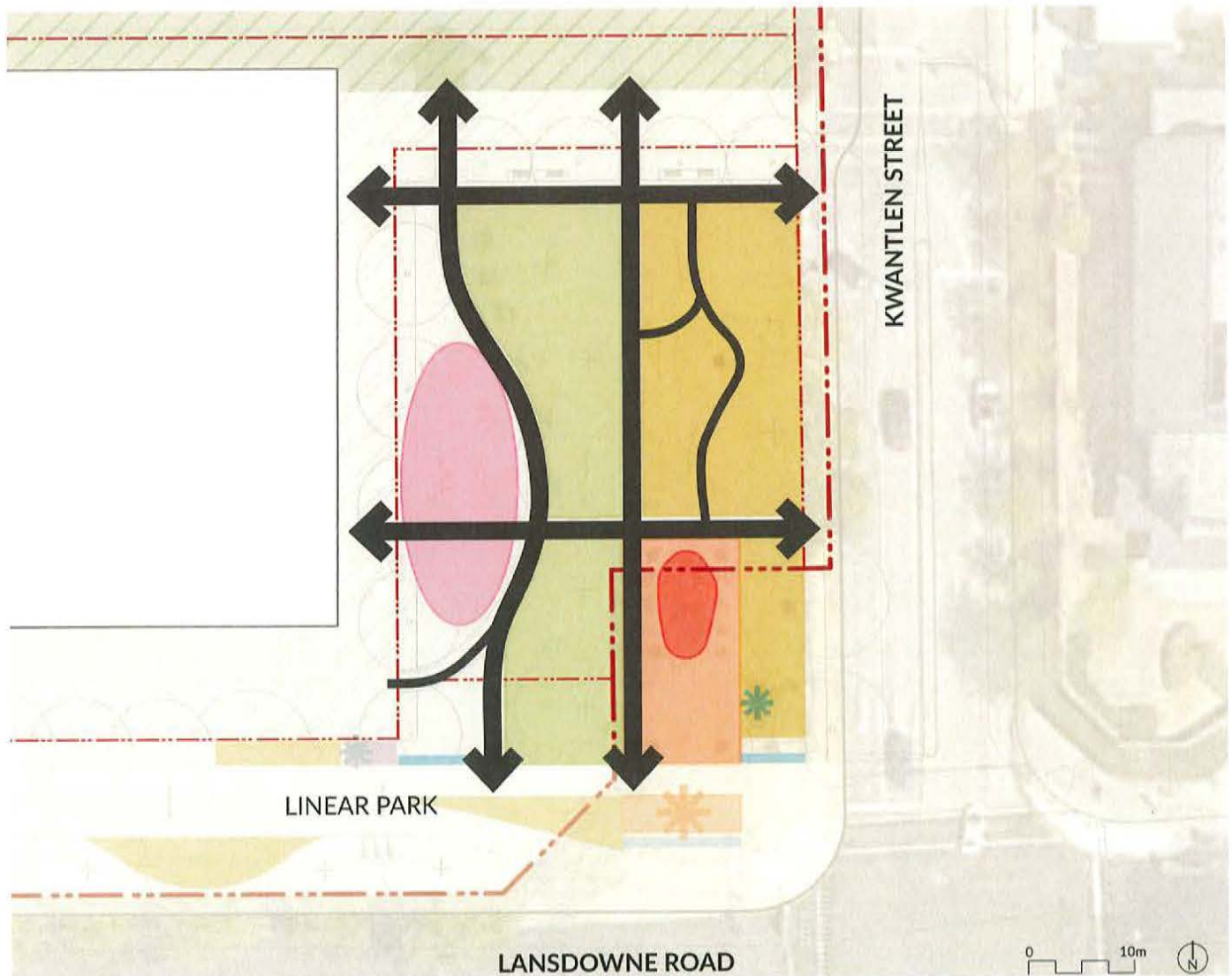
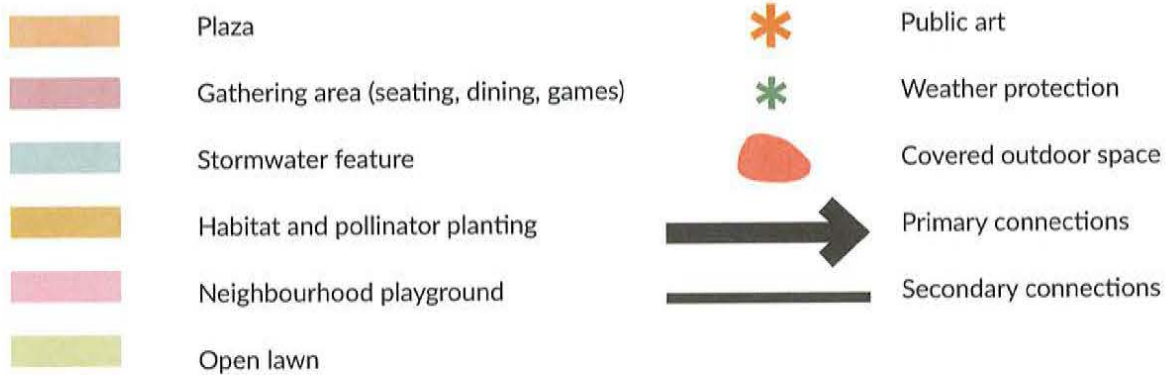
Site Plan: Amenities and Features

- | | | | |
|---|---------------------------------|----|---|
| 1 | Large existing shade trees | 6 | Stormwater feature |
| 2 | Gathering and picnic areas | 7 | Covered outdoor space |
| 3 | Seating nodes | 8 | Neighbourhood playground |
| 4 | Plaza | 9 | Open lawn |
| 5 | Habitat and pollinator planting | 10 | Public art - to be determined through the Lansdowne Public Art Plan and process |



The 0.42-acre Neighbourhood Plaza is an urban gathering space situated adjacent to Kwantlen Polytechnic University and a short walk from the Garden City Lands. Program areas are thoughtfully arranged around the existing mature trees at the center and along the perimeter, preserving the natural character of the space while creating intimate areas for gathering and connection.

Programming and Circulation Diagram



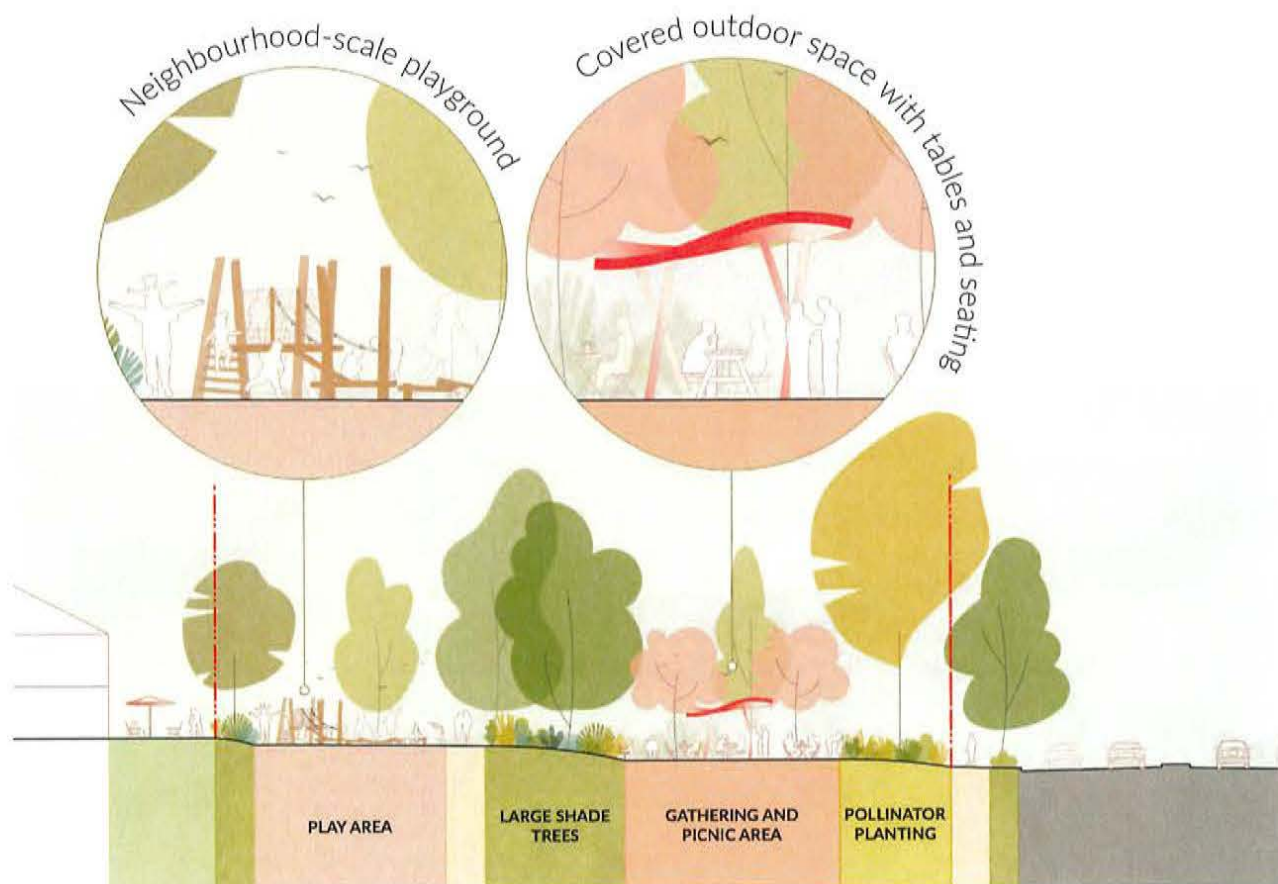
The Neighbourhood Plaza serves as a welcoming space for small community events, gatherings, cultural activities, and informal recreation.

Section E

The Neighbourhood Plaza is a neighbourhood-scale green urban space that preserves and highlights existing large shade trees while incorporating habitat and pollinator plantings. It provides opportunities for informal recreation, play, and socializing. The play area, located along the east edge, is buffered by plantings and set apart from nearby streets for safety and comfort. A small pavilion, picnic areas, and seating create a welcoming focal point for community gatherings and everyday enjoyment.



Key plan (not to scale) showing section view.

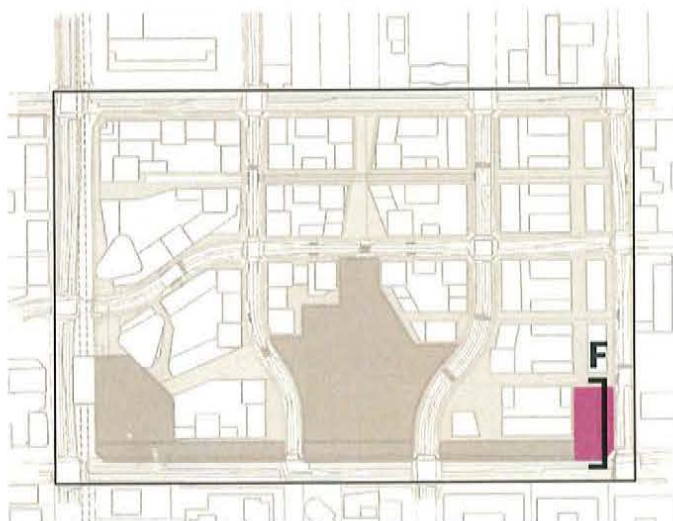


Neighbourhood Plaza section view looking north. Habitat and pollinator plantings help buffer the plaza from the street, while mature trees preserved at the center and edges maintain the park's natural character and provide additional protection for the play area.

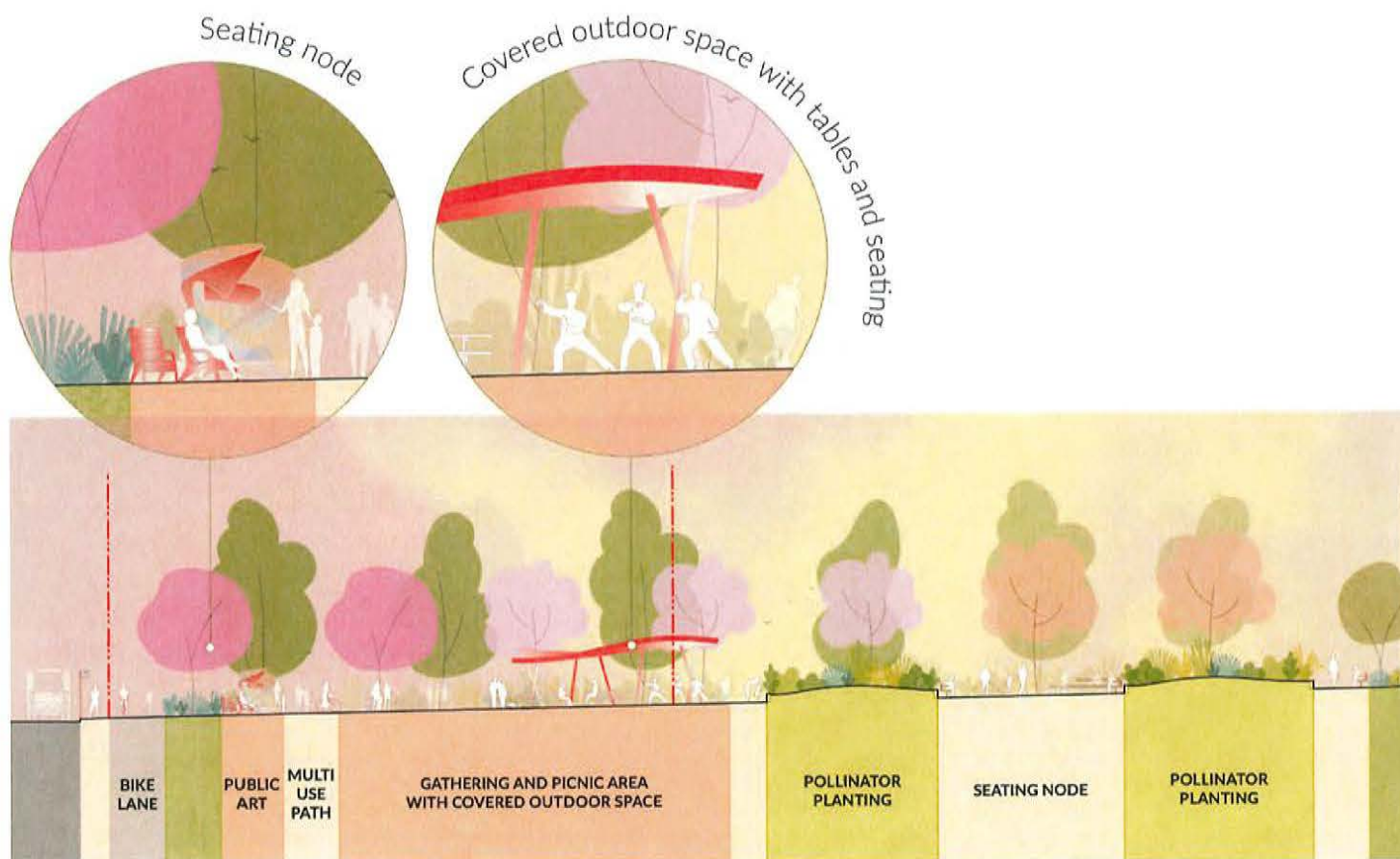
Section F

A grove of flowering cherry trees provides structure and rhythm within the Neighbourhood Plaza, while adding seasonal interest and celebration of the arrival of spring.

Public input highlighted a preference for large shade trees, small gathering areas, seating nodes, habitat planting, stormwater features, a play area, and covered outdoor space—all of which have been incorporated into the Neighbourhood Plaza's design.



Key plan (not to scale) showing section view.



Neighbourhood Plaza section view looking west. The southeast corner of the park serves as a smaller-scale neighbourhood gateway, providing a welcoming entry into the plaza and Lansdowne neighbourhood.

Design Narrative

The broader Lansdowne Linear Park will provide a continuous, city-wide connection between the Garden City Lands and the Richmond Olympic Oval and riverfront. Within the Lansdowne parks, this section will serve as a key connector, linking the parks to each other and to the wider City Centre network. Pathways are designed to safely separate pedestrians—including mobility-aid users and strollers—from cyclists, rollerbladers, skateboarders, and micro-mobility devices.

Along its 500-meter length, a series of park nodes will encourage connection, recreation, and relaxation for people of all ages and abilities. These nodes will include seating, picnic areas, fitness hubs, covered outdoor spaces, and playful, interactive elements. Ecological features are woven throughout the design, incorporating rainwater management, habitat areas, and pollinator plantings to support local wildlife and strengthen the City's ecological network. The preservation of existing large shade trees will further enhance the park's character, creating a welcoming, vibrant, and ecologically rich linear destination for the community.



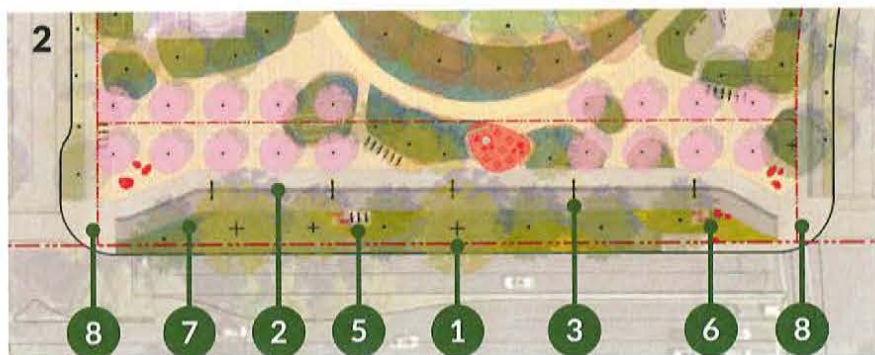
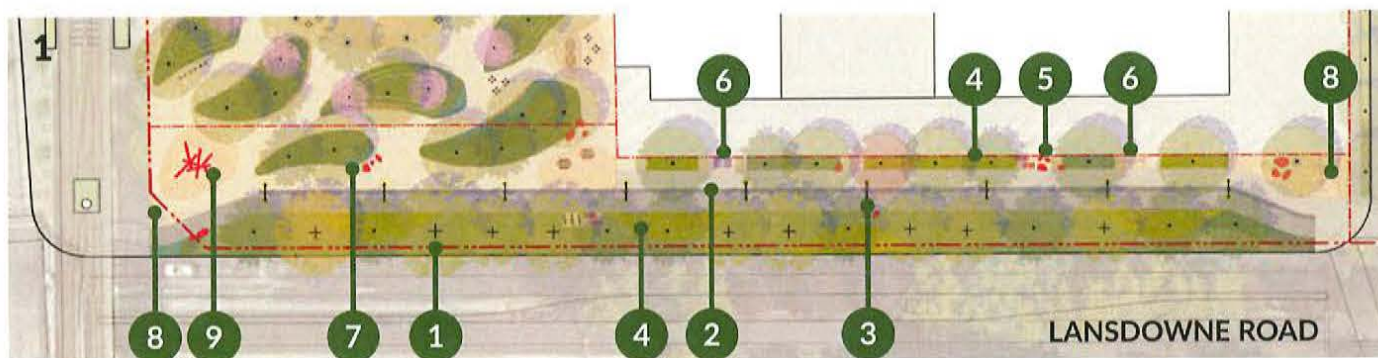
Key plan (not to scale) showing perspective view.



Perspective view of the Linear Park looking west toward the Lansdowne Canada Line Station. Separated pathways safely accommodate a variety of travel modes. Lined with habitat plantings, stormwater features, and recreational and seating nodes, the Linear Park is designed to be more than a transportation route—it will be a vibrant, multi-functional linear park.

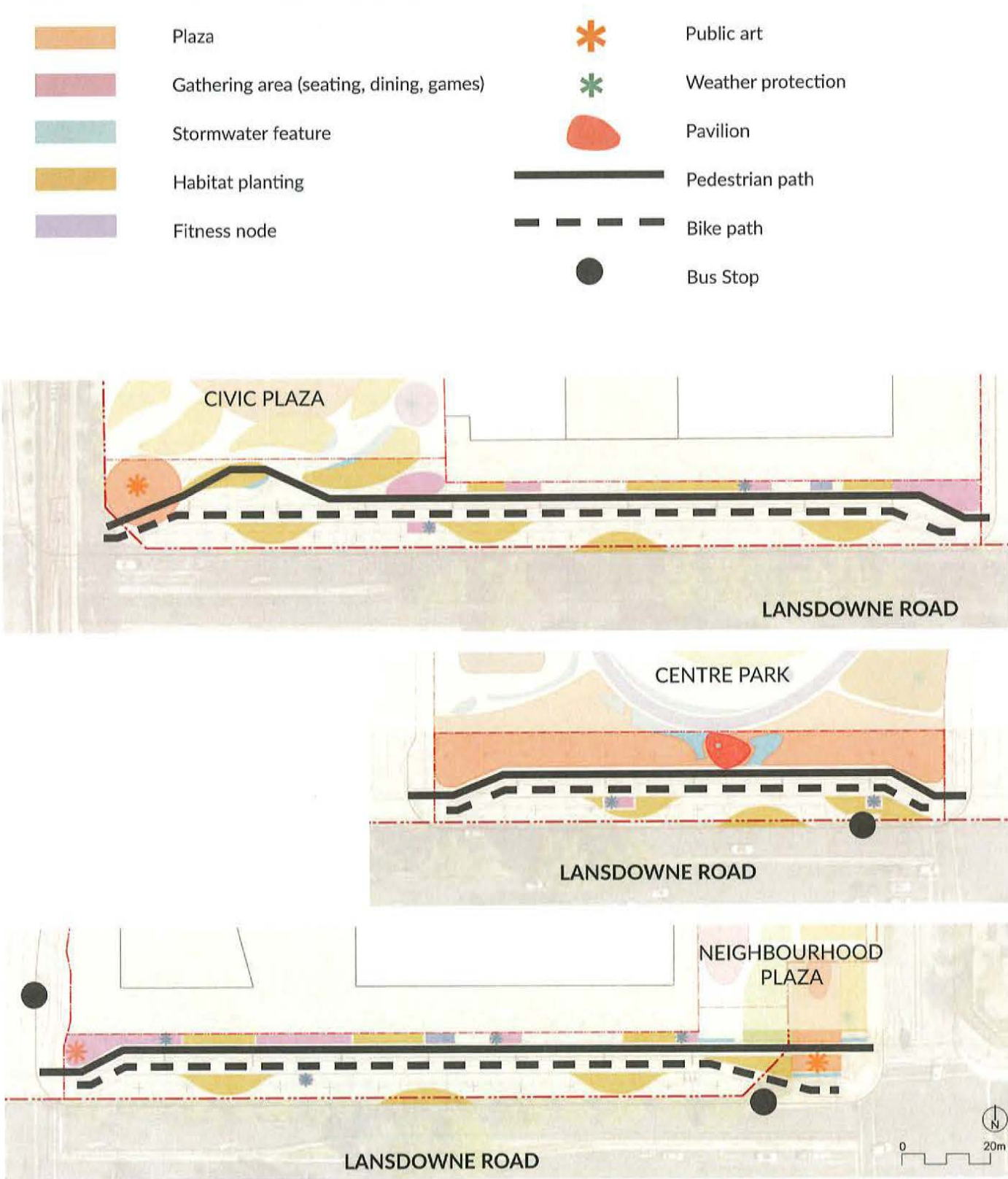
Site Plan: Amenities and Features

- | | | | |
|---|---------------------------------|---|---|
| 1 | Large shade trees | 6 | Interactive and playful elements |
| 2 | Separated pathways | 7 | Stormwater feature |
| 3 | Feature lighting | 8 | Entry plaza |
| 4 | Habitat and pollinator planting | 9 | Public art - to be determined through the Lansdowne Public Art Plan and process |
| 5 | Seating nodes | | |



Seating, gathering, and informal recreation nodes are distributed along the length of the Linear Park, positioned alongside the separated pathways to create a vibrant, engaging linear park experience.

Programming and Circulation Diagram



The Linear Park includes a pedestrian pathway to the north with seating areas, games, fitness features, public art opportunities, and weather protection. A separated path to the south will accommodate cyclists, scooters, skateboarders, and rollerbladers.

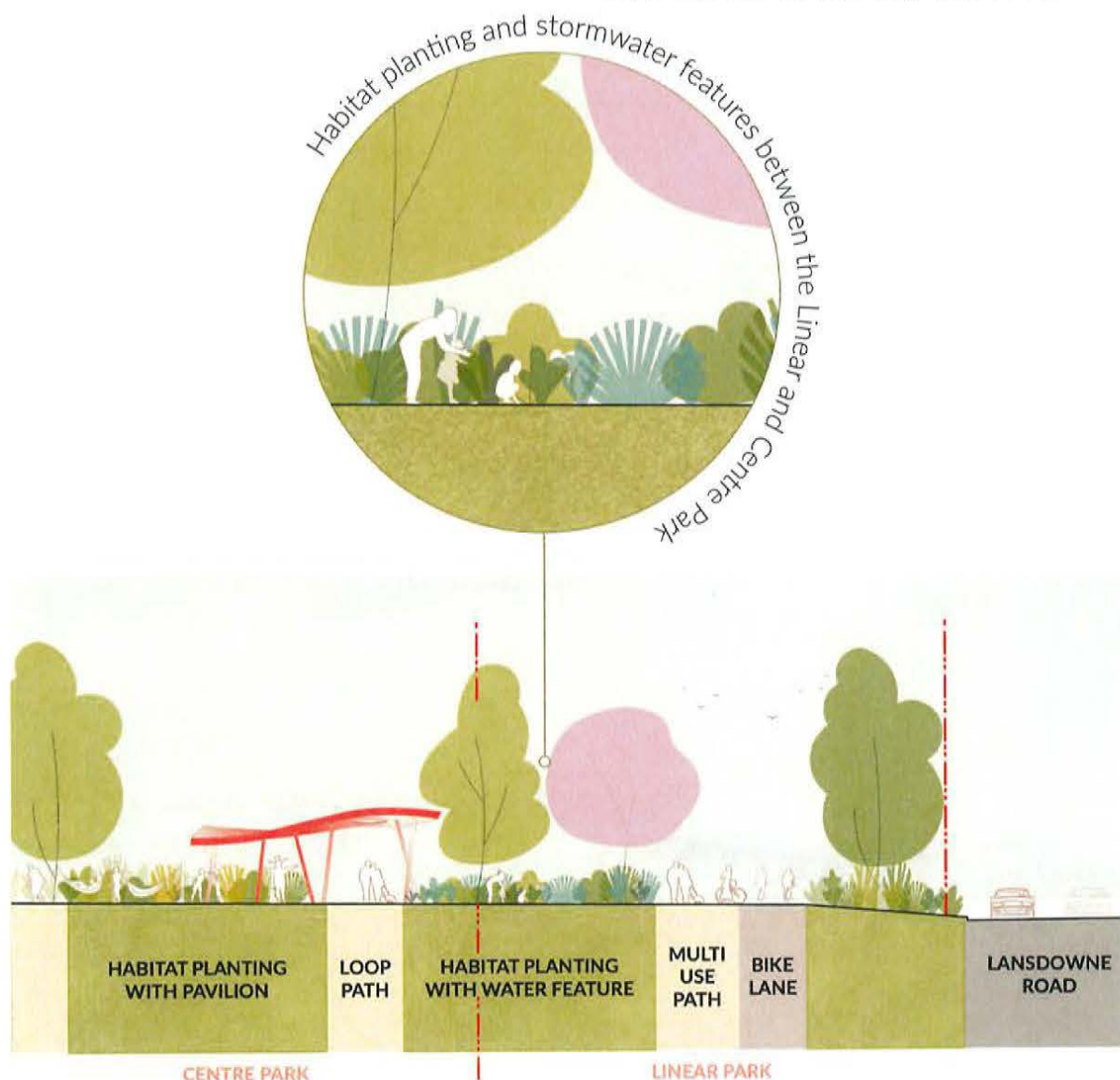
Section G

Planting, trees and stormwater features along the interface between the Linear Park and Centre Park will create a buffer while visually and experientially linking the two spaces.

Preserved trees and additional understory planting along Lansdowne Road will provide a safe separation from traffic while enhancing the park's lush, inviting character. Together, these landscape elements will help create a welcoming, vibrant, and connected linear park experience.



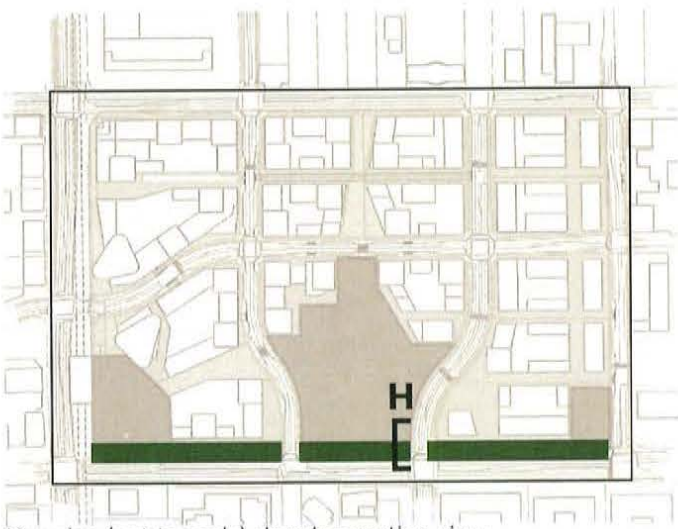
Key plan (not to scale) showing section view.



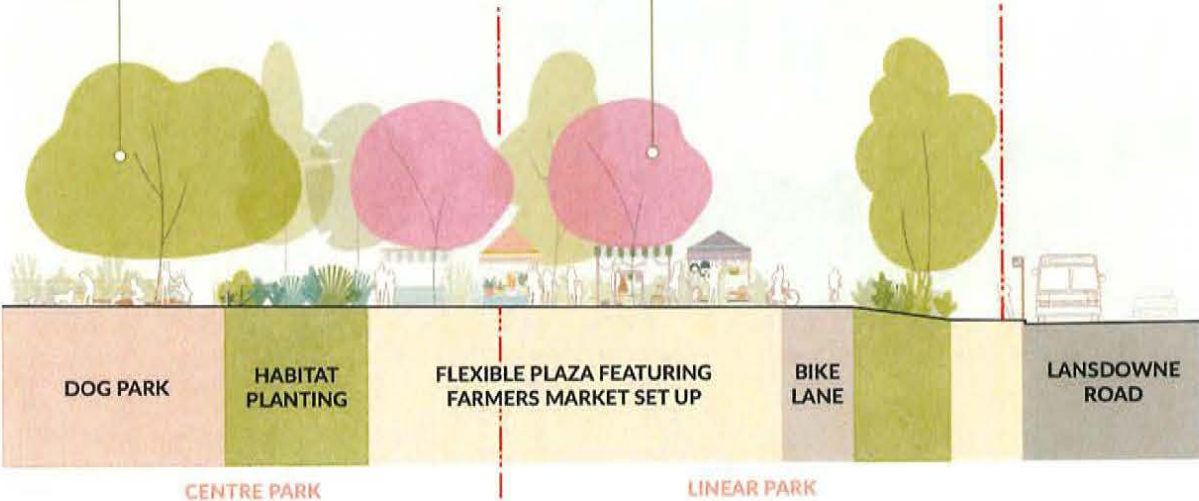
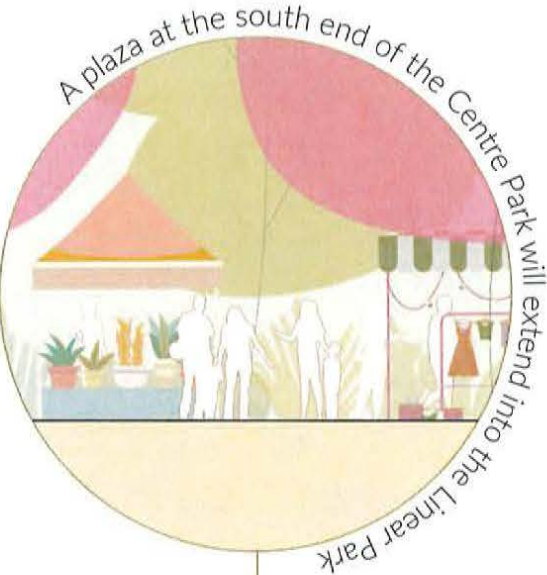
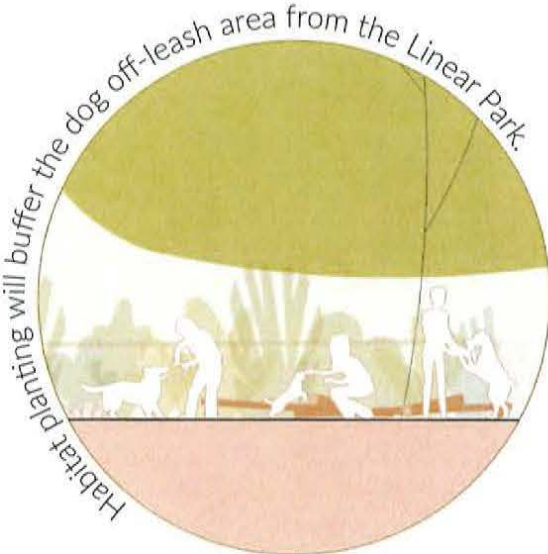
Section view looking east through the interface between the Linear Park, Centre Park and Lansdowne Road.

Section H

The Linear Park will connect all of the Lansdowne parks and serve as an extension of Centre Park, Civic Plaza, and Neighbourhood Plaza where they interface. The master plan thoughtfully integrates these spaces, creating a cohesive and dynamic park network that is varied yet unified.



Key plan (not to scale) showing section view.



Section view looking east through the central portion of the Linear Park, showing its relationship to Centre Park. This blended plaza space could host seasonal community activities including farmers markets and cultural events.

Lansdowne Phasing Plan

Overall

