

Friday, December 04, 2009

David Weber, City Clerk
City of Richmond
6911 No. 3 Road
Richmond, BC
V6Y 2C1

Re: Delegation to January City Council Meeting

Dear Mr. Weber,

The Gateway Theatre would like to send a delegation to Richmond City Council at their scheduled meeting on January 25, 2010. This presentation is a requirement of our operating agreement with the City of Richmond in which we will be reviewing Gateway Theatre's 2008-2009 operations.

Simon Johnston, Artistic and Executive Director, and E. Michael O'Brien, Chair of the Board of Directors, will attend to make this presentation. Please feel free to contact me if you have any questions at 604-247-4971.

Sincerely,



Suzanne Haines
General Manager

cc: Councillor Sue Halsey-Brandt





**2008-2009 ANNUAL REPORT
RICHMOND GATEWAY THEATRE SOCIETY**



© 2002 Gateway Theatre. All rights reserved. No reproduction without written permission. Photo by southpawdesign.ca

Contents:

Introductory Section

Message from the Mayor	1
Message from the Chair	2
Richmond Gateway Theatre Society Board	3

Gateway Theatre 2008-2009 Operations

Mission Statement	4
Report from the Artistic and Executive Director	5
What our patrons say: Main Stage Program	7
What our patrons say: Studio Program	8
Academy Program	8
Volunteer Program	9
Community Clients	9
Facility Usage Report	10
Fundraising Committee Report	11
Special Thanks to Sponsors and Donors	12
Finance & Audit Committee Report	15
Audited Financial Statements	16
Endowment Committee Report	30
Gateway Administration	31



Malcolm D. Brodie
Mayor

City of Richmond

6911 No. 3 Road
Richmond, BC V6Y 2C1
Telephone: 604-276-4123
Fax No: 604-276-4332
www.richmond.ca

GREETINGS FROM THE MAYOR:

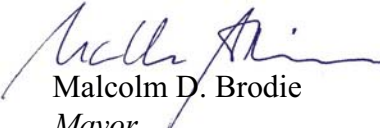


On behalf of City Council and the residents of Richmond, I would like to extend sincere greetings to all the readers of the *Gateway Theatre Society* 2008-2009 Annual Report.

The Gateway Theatre, now celebrating its 25th Anniversary, is one of the largest theatres in the province of British Columbia and contributes greatly to the Richmond community through its performing arts, public art displays, drama classes, professional theatre productions, and as a venue for meetings and film shoots.

Richmond City Council is very proud of how the Gateway Theatre has been inclusive of a wide variety of artistic pursuits, at both the community and professional levels as well as for students. We are especially proud of how this theatre reflects the culturally diverse nature of this community.

Thank you to all the volunteers, society members, and staff for your strong commitment to the Gateway Theatre and its subsequent success. Best wishes for the future!


Malcolm D. Brodie
Mayor



Message from the Chair

2008-2009 was an exciting and prosperous year with a well-chosen line up of very popular plays. Once again we participated in the Cultural Olympiad in 2009 with Summer of My Amazing Luck in the Studio. We had critical and box office success with all of our productions. Even with the uncertainty of the economy, subscriptions were stable and single ticket sales increased which resulted in a surplus that reduces our accumulated deficit.

This year as in the past we have successfully rented the theatre to our valued clients who produced a range of theatre, dance, music and film and television productions. We are a professional theatre for the region and are always open to new opportunities for the community to use the facilities.

The Academy for the Performing Arts has grown and new programs have been introduced. Enrollment is up and we are looking forward to another banner year. We are proud of the success of our Academy students.

This year we hosted our 2nd annual Wine Tasting Event 'Clink'. The evening was a combination of wine and small plate tasting from B.C. wineries and local restaurants. Supporters of the Gateway supplied wonderful auction items which we happily bid on while sipping and nibbling the evening away. We decided to include the Main Stage this year and it provided much needed room for additional patrons to enjoy the evening. Also new was a live auction with auctioneer and Vice Chair E. Michael O'Brien. The food and wine vendors are already booking their spots for next year's 'Clink' and we expect it will be a 'SOLD OUT' affair.

The Board held two other fundraising efforts this year. Instead of a trip, the committee offered a cash raffle to patrons with great success. There were three winners: **Ghislaine Shawe, Ron Whyte, and Heather Forbes**. In the economic slump, the Board also decided to host a clothing drive to benefit Big Brothers. This will be an ongoing venture as we support others in the community as a charity helping other charities.

We could not do any of this without our dedicated Board, Staff and Volunteer Teams. I wish to express my sincere appreciation for the hours of dedicated time given by these groups, without them we would not be. Thank You!

Lastly, my thanks to the City of Richmond for their ongoing support. As we enter our 25th anniversary year, you will enjoy the updates to the facility completed by the City in the summer. We hope these updates will make your experience even more enjoyable. The future is exciting and with your support we are looking forward to another wonderful year at the Gateway.



Diane Cousar

Chair, Richmond Gateway Theatre Society Board



RICHMOND GATEWAY THEATRE SOCIETY BOARD
2008-2009

Executive Committee:

Diane Cousar	Chair
E. Michael O'Brien	Vice Chair
Leni Dinnell	Treasurer
Keith Liedtke	Secretary
Sue Halsey-Brandt	City Council Representative

Members at large

Lori Chalmers
Ruth Collison
Paul Corcoran
Jack Evans
Rob Fleming
Chris Morris
Kelly Myers
Debbie Tobin

Committees

Fundraising

Ruth Collison, Chair
Seemah Aaron
Lori Chalmers
Diane Cousar
Jack Evans
Kim Evans
Rob Fleming
Judi Greenwood
Sonja Hill
Keith Liedtke
Carmen McCracken
Chris Morris
Kelly Myers
Debbie Tobin
Suzanne Haines (staff)
Ashley Li (staff)

Finance

Leni Dinnell, Chair
Paul Corcoran
Diane Cousar
Keith Liedtke
Jerry Chong
Suzanne Haines (staff)
Simon Johnston (staff)
Brent Wang (staff)

Nominating

Rob Fleming, Chair
E. Michael O'Brien
Chris Morris
Suzanne Haines (staff)
Simon Johnston (staff)



Mission Statement

Gateway Theatre is a welcoming and inclusive regional theatre for Richmond and its surrounding communities. Encouraging participation and cultural diversity, we strive for excellence and leadership in the development and production of live professional theatre and programs that connect the community.

Core Values

These values define the way decisions are made at the Gateway Theatre. They create a welcoming team and inclusive culture for staff, volunteers, partners, clients, and patrons.

LEADERSHIP <ul style="list-style-type: none">- Sustainability- Relationships with community- Proactive	RESPECT <ul style="list-style-type: none">- Treatment of each other- Positive attitude- Dignity
INCLUSIVE <ul style="list-style-type: none">- Participation- Diversity: cultural, social & ethnic- Responsiveness	QUALITY <ul style="list-style-type: none">- Unique- Artistic Excellence- Innovation

Programs

Gateway Theatre's mission is implemented through programs delivered to the region. These programs are:

A: Live Professional Theatre

- Main Stage Productions
- Studio Productions
- Play Development
 - Commissions
 - Readings
 - Workshops
 - Dramaturgy
- Gateway Academy

B: Community Connections

- Partnerships
 - City of Richmond
 - Corporate
- Rentals Program
- Volunteer Program
- Special Events
- Mentorship

Report from the Artistic and Executive Director



I am pleased to bring you another annual report filled with good news. Despite the grim economic slump or perhaps because of it, the theatre was used more than in the previous year: there were increased single ticket sales for our professional theatre series, new community groups rented our stages, and classes were added to the Academy due to an increase in student enrolment. These swells in artistic activity resulted in another year-end surplus. It appears that strategies put in place two years ago reaped benefits this year.

In addition to our professional theatre programs, two thirds of the annual facility dates were available to over 40 rental groups. We hosted a diversity of events including classical music concerts, choral recitals, Chinese opera, dance recitals, garden awards and meetings throughout the year. Facility use increased to 920 times, up from 840 uses in the previous year and connected with approximately 57,000 patrons.

In addition to the single ticket buyers referenced above, there were over 2,200 subscribers for the six productions to the **Main Stage** and **Studio Series** representing a 14% increase from the previous season. The **Main Stage** opened with *Leading Ladies* a comedy directed by Johnna Wright an emerging artist who is now working in several Provinces. Our winter musical was the delightful *Guys and Dolls* that attracted crowds despite horrendous December snowstorms. *The Art of Murder* in February, transferred from Richmond to Vertigo Theatre in Calgary where it enjoyed a successful run. Joint productions of this kind enable us to both exchange artistic personnel and cut costs. In April we finished the season with *Forever Plaid*, which was the most requested play according to our survey; and it was a smash hit.

In the **Studio** we continued with more progressive productions starting with *Summer of My Amazing Luck* based on the multi-award winning novel by Miriam Toews. Natasha Nadir who produces our play development series directed the production that was designed by other emerging artists. *Train* (in association with Theatre Replacement) ran in May as part of Asian Heritage Month. Written and performed by Maiko Bae Yamamoto, this haunting and unique physical theatre piece presented a different way to tell a story on stage. Both Studio productions played to sold-out nights.

Scene First play development program, now in its fifth year, is dedicated to the development of new plays from across Canada. The goal is to find works suitable for future Main Stage and Studio programming. Three submissions were selected and given public readings in March. These were: “*If Romance is Dead, Who Killed It?*” by Tracey Power (whose play “Back to You Lucille Starr” will be in our Studio in November 2009); *Out of the Blue* by Laurie Murdoch; and “*The Darling Buds of May*” by Simon Bradbury. Additionally, the second “*Sea of Stories*” project was started. This community engagement initiative welcomed non-professional writers from Richmond to tell their stories about our community. The writers were Paula Craig, Bill Marles, Margreth Fry, Linda Mei, Shirley Quan, Jane Jiang, and He-Ling. Their short plays were edited by professional writer/directors. Each was given an in-house reading from which final drafts were completed. Full productions of these scripts were scheduled for October 2009.

The **Gateway Academy** continued to provide classes in drama and musical theatre for a range of levels from beginners through to the pre-professional level. There were over 200 students registered in a dozen

different classes from July to May. The students ranged from 8-18 years of age. Two thirds were from the Richmond and the remaining one third came from surrounding municipalities.

In addition to these core programs, we provided other services grouped under the umbrella of **Community Engagement**. These include partnerships with numerous corporate sponsors. Most significant of these is the **City of Richmond**. Gateway Board and Staff also participated as volunteers in a range of opportunities such as the Richmond Chamber of Commerce Business and Arts Committee, Richmond Arts Coalition, the Rotary Club and numerous charity events throughout the year. We are most proud of our leadership role in partnering with the City of Richmond, the Chamber of Commerce, the BC Children's Art and Literary Society. Included under the umbrella of Community Engagement is Gateway's **Volunteer** program that continues to flourish. We have over 160 volunteers up from 140 in the previous year. They donated over 10,500 hours of work as ushers, coat checkers, bartenders and office assistants. In all, our Volunteers contributed almost \$103,000 worth of services.

Last year we survived, some say thrived, despite the economic grey clouds. We were well supported by renters, students, subscribers and single ticket purchasers. This made up for the dramatic downturn in corporate sponsorships that were siphoned to support other events in the community. To offset future deficiencies we will have to rely on arts grants. These subsidies allow us to keep ticket prices at an affordable level. A report by the BC Arts Council shows that for every dollar invested in the arts there is an economic impact of \$1.36. A fantastic return! I urge our Society Membership to engage elected representatives in a dialogue of support for sustained arts funding in the future. Subsidies not only assist in positive financial results but also support other determinants of Gateway's success such as our significant contribution to quality of life. In this regard, Gateway remains a font of great joy to artists, staff and volunteers who work here throughout the year. It is a transformative experience for those who participate as patrons. And, as our Mayor has often said, because of the Gateway, Richmond has a soul. At the end of the day, I think these accomplishments define the character of a city for those who live here and for those who come to visit. Let's all make sure these values are preserved.

I would like to thank the Board of Directors for their unflagging support of our programs, and my personal thanks to our volunteers, our administration team, our production personnel and our faculty for their selfless contributions to excellence in the performing arts in our community.

A stylized, handwritten signature in black ink that reads "Simon". The letter "S" is large and loops around the "i", "m", and "o".

Simon Johnston

Artistic & Executive Director

What our patrons say: Main Stage Program



Leading Ladies by Ken Ludwig

I work in the arts and have been to many productions all over the world, and I can honestly say that my experience at the Gateway Theatre was one of the very best I've ever had.

We were crying we were laughing so hard. Thanks to all for giving us an amazing performance and making our night out so enjoyable once again.

top row, from left: Luisa Jojic, Allan Zinyk, Tara Travis; bottom: Peter Jorgensen. Photo: David Cooper

Guys & Dolls by Frank Loesser, Jo Swerling & Abe Burrows

It was our first visit to the Gateway Theatre and I was impressed. I loved the ambience of the theatre - small, intimate and friendly.

I just want to thank you and express how wonderful the experience of seeing Guys and Dolls was. The production and performances were one of the best I have seen in a long time.

center: Sara Jean Hosie and ensemble. Photo: David Cooper



Art of Murder by Joe DiPietro

Suspenseful, surprising and hilarious in every way.

One minute we were laughing our heads off and the next we were scared out of our minds. So many twists and turns!!! We thought all four actors did an outstanding job!

from left: Natascha Girgis, Kevin Rothery, Scott Bellis, Cat Main. Photo: David Cooper

Forever Plaid by Stuart Ross and James Raitt 300% more fun than I expected!

I enjoyed every show this season but Forever Plaid last night was just wonderful. It brought back so many great memories. We will be reserving our seats for next season.

from left: Matt Palmer, Graham Coffeng, Ben Birchard, Craig Fair. Photo: David Cooper



What our patrons say: Studio Program



Summer of My Amazing Luck by Chris Craddock

Saw the Saturday matinee and just wanted to tell you how much I enjoyed it. Very touching and funny. Thanks to you and your fellow thespians for a lovely time at the theatre. You were all, well, amazing!

It reminds us that no matter how hard life gets, humour often carries us through to better days and to clearer understandings of ourselves and life.

From left: Sasa Brown, Sarah Rogers, and Daniel Arnold
Photo: Sherry Elasoff

Train by Maiko Bae Yamamoto

The charming Maiko Yamamoto and her very likeable father bring their own special knowledge and meaning to a unique and radiant play.

Maiko Bae Yamamoto's playfully surreal little drama offered a very personal journey through some theatrical territory that from the start proved as fascinating as it was unfamiliar.

From left: Minoru Yamamoto, Maiko Bae Yamamoto



Academy Program



Photos: Elizabeth Conway

Volunteer Program



Many, many thanks to our volunteers! Serving as ushers, coat check attendants, ticket takers, assistant bartenders, and clerical assistants, volunteers are Gateway ambassadors. Their hours, efforts, memberships, and donations make volunteers an integral part of the Gateway family. Our heartfelt appreciation and unending gratitude to every volunteer!

Total Number of Volunteers	160
Number of Volunteers with over 10 years of service	51
Total hours of donated time in 2008-2009	10,550 hours
\$ Value of time	\$102,965

BRAVO VOLUNTEERS!

Community Clients

In 2008 -2009 Gateway Theatre embraced a variety of organizations, with diverse entertainment performed or presented here. Our clients, both new and returning for this past year are:

Arts Umbrella*	Richmond Christian School
Burke Academy*	Richmond Community Band*
Chimo Crisis Services	Richmond Community Orchestra
Chinese Culture Club	Richmond Community Services Advisory
Chuen Ying Arts Centre	Richmond Concert Association*
Cindy Yang Dance Academy	Richmond School Board District 38*
City of Richmond*	Richmond Youth Concert Band*
Dance Co*	Shantero Productions
Defy Gravity	Steveston Arts Connection
Festival of Voice*	Super Productions
Gabriela's Movement Studio*	The JAM Show
Laima in Concert	Touring Players*
Live Nation	Tourism Richmond
Music Encore Concert Society	UBC Dragon Seed Connection
North Shore Theatre for Children	Vancouver Academy of Dance*
NorthWest Piano Society	Vancouver Children's Art Gallery
Nritya Manjaree School of Kathak	Vancouver Japanese Gardeners
Oh Canada Eh Productions	Wei Li
Ping Academy	White Iron LIVE
The Pacific Piano Society*	
Richmond Academy of Dance*	*Organizations who have been users for
Richmond Chinese Folk Dance Society*	more than 10 years

Facility Usage Report

MONTH	MONTHLY TOTAL	Attendance			Main Theatre	Studio A	Studio B	Lobby
		Gateway Theatre Plays	Academy	Rentals				
JULY (2008)	1441	109	1332	0	21	22	20	5
AUGUST	1530	34	1249	247	21	19	12	2
SEPTEMBER	3331	508	568	2255	12	37	41	7
OCTOBER	5351	4713	578	60	37	2	46	8
NOVEMBER	5252	836	567	3849	12	65	49	6
DECEMBER (2008)	7661	7173	364	124	28	28	1	1
JANUARY (2009)	1562	0	564	998	7	0	44	5
FEBRUARY	5749	3940	540	1269	19	37	20	4
MARCH	2966	1405	724	837	22	42	51	2
APRIL	7828	5877	501	1450	20	21	23	1
MAY	8860	1052	0	7808	28	10	16	0
JUNE (2009)	4152	39	10	4103	15	17	14	1
TOTAL	55683	25686	6997	23000	242	300	337	42

TOTAL
ATTENDANCE: 55683
USAGE 921



Fundraising Committee Report



2008-2009 fundraising initiatives featured our 2nd Annual wine & food fundraiser, Clink! and a cash raffle. Clink! was a tremendous success with 300 people in the lobby, Studios A and B, and the Main Stage. The additional space was needed for a gloriously dressed crowd taking in fine food from around Richmond, BC wineries, and tables of silent auction prizes. We also added the entertainment of a live auction. The event raised a gross profit of \$33,433 in funds for the theatre programs and beyond the financial benefits, introduced the theatre to new patrons and supporters in the food and wine industry who continue to support us.

Ticket sales for the raffle kicked off in April with our most popular small musical, Forever Plaid. The draw was at the end of the run of the show with three winners. **Ghislaine Shawe** won a \$5,000 First Prize in Gateway Theatre's fundraising raffle, drawn on April 24, 2009. She purchased her raffle ticket from Board Member Leni Dinnell, and although she has never attended a Gateway production, she says she will now! **Ron Whyte**, a long-time Gateway Theatre Subscriber won Second Prize valued at \$1800, a getaway, entertainment and pampering package. **Heather Forbes** won the Third Prize, a dinner, wine and entertainment package valued at \$900.

Our last fundraising event this year was a clothing drive. Sparked by an idea from Board Member Debbie Tobin, the committee contacted Big Brothers of Canada and created 'Charities Helping Charities'. As we saw the economy crumbling, we asked people to look into their closets and do some spring cleaning.

As you probably know, we also could not produce a season without our sponsors and donors. Tickets only cover 50% of the cost of a production so our sponsors and donors make up the difference. Each year we are overwhelmed by the support from the community and this year was no different. Please see the listing on the following pages to celebrate our supporters with us.

Fundraising is always a challenge for the Arts that requires dedicated and hard working individuals. And for that, I thank the Board members, volunteers and staff of the Gateway for their unwavering support and service. Lastly, thanks to the committee members for their dedication, time and commitment:

Seemah Aaron	Rob Fleming	Chris Morris
Lori Chalmers	Judi Greenwood	Kelly Myers
Diane Cousar	Sonja Hill	Debbie Tobin
Jack Evans	Keith Liedtke	
Kim Evans	Carmen McCracken	

	2008-2009	2007-2008	2006-2007
Revenues			
Fundraising	40,528	41,720	15,153
Memberships & Donations	26,291	22,510	25,841
Sponsorships	43,400	30,500	35,200
Grants*	124,697	94,589	147,667
Total Revenues	234,916	189,319	223,861
Total Expenses	25,900	25,293	28,129
Net Raised	209,016	164,026	195,732

*One year increase to grants related to pilot project 'Sea of Stories' in both 2006-2007 and 2008-2009

Special thanks to all sponsors who recognize the importance of the arts in our community and whose support enables Gateway to sustain excellence in programming:

Sustaining Support: **The City of Richmond**

Operating Support: **Province of British Columbia**
BC Arts Council

Educational Outreach Sponsor
RBC Foundation

Accommodation Sponsor
Accent Inns, Vancouver-Airport

Opening Night Sponsors
Anna's Cake House
The Boathouse Restaurant – Richmond
Carver's Steakhouse
Marriott Vancouver Airport

Performance Sponsors
The Fairmont Vancouver Airport Hotel
Mad Greek Restaurant
Univar Canada

Project Support
Innovation Networks
The Vancouver Foundation
The Greater Vancouver Regional District
The Hamber Foundation
The Leon and Thea Koerner Foundation
Richmond Chinatown Lions Club
The Sunrise Rotary

Raffle Sponsor
Cool Secret Spa Laser Clinic
Domaine de Chaberton Estate Winery
Holiday Inn International Vancouver Airport
Mad Greek Restaurant
Raintree Wellness Spa
Starbucks
The Whole Being Yoga Company

Media Sponsors
Richmond Review
Richmond News

Corporate Support
\$1000+
Caltron
Kaltech Manufacturing
Stereo Printers

\$100-\$999
Safeflight Consulting Ltd.
Michael Bailey & Associates Inc.
Bank of Montreal

CLINK 2008 SUPPORTERS

Feature Wineries

Arrowleaf Cellars
Domaine De Chaberton Estate Winery
Calona Vineyards
Ganton & Larsen Prospect Winery
Hester Creek
Robin Ridge Winery
Mt. Boucherie Estate Winery
Peller Estates
Red Rooster
Seven Stones Winery
Sandhill
Sip Wines

Media Sponsors

The Richmond Review
KVOS Television
103.5 QMFM

Gifts in-kind

Prosperity Laundry
Radisson Hotel Vancouver Airport
Rotary Club of Steveston
Sip Wines
Southpaw Designs
Stereo Printers

Special thanks to our 2008-2009 Donors

Margaret Agrey
Ken Alexander
Don Anderson
Archie & Hazel
Anderson
Joan Anderson
Ted Andrew
Betty Backman
Alan Batcheller
Alec Becker
Sharon Bellingher
Yvette Bodnar

Viola Bowdish
Delia Boyko
Malcolm Brodie
Mitchell Burnstein
Pat Cahill
Karen Calsbeck
Adrian M. Chan
Joe Chan
Helen Chow
Bonnie Chuter
Ron Climenhaga
John & Ruth Collison

Feature Caterers

Artistic Designs by Jeanne Bentley
Blue Canoe Waterfront Restaurant
The Boathouse Restaurant
The Canterbury Coffee Corporation
Damien's Belgian Waffles
Dinesty Chinese Restaurant
George's Taverna
Papi's Ristorante Italiano
The Point Restaurant & Tapas
Steveston Seafood House
Tapenade Bistro
Vogue Chinese Cuisine

Product Sponsors

A.A. Advertising Ltd
Keith Liedtke – Re/Max Westcoast
Blue Canoe Restaurant

Chocolate Gift Boxes

Brockmann's Chocolate Inc.

Julie Colvin
Lilian Conway
Jane Cooley
Paul Corcoran
Diane & James Cousar
George & Ruth Dahl
Denise & Don Dale
Carolynn B. Dallaire
Leni Dinnell
Jim & Johan Elgood
Gloria & Tim Enno
Barbara Eso

Bob Esson
Michael Fehr
Marian Ferguson
Fern Finn
Marjorie Fisher
Elaine & John Fisher
Frank Fowlie
Lillian Fraser
Bob Garnett
Myrna Geib
Arnold Gerding
Raymond Godfrey
Mary Godolphin
Betty Goodwin
Georgie Grayson
Marlene Grey
Sue Halsey-Brandt
Laurie Hamm
Heidi Hannay
June Hanson
Anne Harrison
Roy Harrison
Alice & William
Hawkins
Arlene Helme
Linda Horne
Russ Horrey
Sally Houston
Lilian Hudson
Bob & Donna Humphries
Bernice Hunter
Bruce Ingall
Faune Johnson
Sheila M. Johnston
Alfred Jung

Lorraine & Richard
Kaczor
Ian & Janet L. Karp
Masako Kato
Joan & Peter
Kellinghusen
Kathy Kent
Barbara Kissuras
Christine Knight
Fred & Ruth Krause
Bob & Jean Lane
Judy Laszlo
Keith Liedtke
Thelma Lloyd
Patricia Lorimy
Marilyn & Ron Loyer
Pearl MacPherson
Eileen Marsh
Michael Matthews
Jeaninne Mattick
Patrick & Sherri
McAndless
Lorna McDowell
Mary McInnes
Gillian McIntyre
Wes McLeod
James Millet
Chris Morris
Anne Morrison
Bob & Lois Munroe
Evelyn Murdoch
Kevin Needham
William New
Edith O'Brien
E. Michael O'Brien
James O'Flynn

Edward J. Odette
Lynne Perreault
Marilyn Peterson
Mrs. C Picketts
Joan Plumsteel
Kathryn Raines
Peggy Redpath
John Richardson
Helen Rittberg
Joanne Rothwell
Rae Ryane
Gail Screaton
Nel Seegers
Sarjit Sekhon c/o RBC
Helle Sepp
Ken Seto
Isabelle Simpson
Jill Sladen
Rose Slutsky
Nansi & William Smith
Bruce Sommer
Norm Sorel
Frank Stephan
Sylvia Surette
Setsuko Tanaka
Joan Tweedlie
Barbara Uniewski
Barrie Vickers
Garth Walker
Irene N. Watts
Garry White
Brian Whitworth
Roswitha Wilby
Emily & Gordon Wilson
Helen & Thomas Woods
Charles & Gert Young

Ruth Collison
Chair, Fundraising Committee

Finance & Audit Committee Report



For the year ended June 30, 2009, we had a positive bottom line in Operations of \$65,832, which decreased our accumulated operating deficit to \$19,611. We will continue our efforts through increased revenues and reduced operating expenditures to eliminate the remaining operating deficit, however there are challenges on the horizon. The impact of Provincial Government cuts to the arts through the BC Arts Council and the BC Direct Access Community Grants program could result in a loss of \$100,000 in granting funds for future years. Further, the current economy and HST leaves the public with less disposable income which may impact our ability to sell our services to the community.

The Administration Fund shows a surplus for the year of \$1,556 resulting in an accumulated deficit of \$77,017. The deficit in this fund expresses the vacation and overtime owed to employees at June 30, 2009. Employees must use vacation allocated within 13 months of their anniversary of employment.

I thank all of the Financial and Administrative staff of the Gateway Theatre for their continued support of the Finance Committee over the past year. I would also like to thank all members of the Finance Committee for their active participation and advice to the Board of the Richmond Gateway Theatre Society.

Leni Dinnell

Treasurer & Chair, Finance & Audit Committee

RICHMOND GATEWAY THEATRE SOCIETY

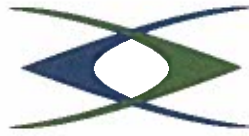
Financial Statements

June 30, 2009



BLUE FISH GROUP
CHARTERED ACCOUNTANTS

CNCL - 67



BLUE FISH GROUP
CHARTERED ACCOUNTANTS

AUDITORS' REPORT

To the Members of Richmond Gateway Theatre Society

We have audited the statement of financial position of Richmond Gateway Theatre Society as at June 30, 2009 and the statements of operations and fund balances, and cash flows for the year then ended. These financial statements are the responsibility of the Society's management. Our responsibility is to express an opinion on these financial statements based on our audit.

We conducted our audit in accordance with Canadian generally accepted auditing standards. Those standards require that we plan and perform an audit to obtain reasonable assurance whether the financial statements are free of material misstatement. An audit includes examining, on a test basis, evidence supporting the amounts and disclosures in the financial statements. An audit also includes assessing the accounting principles used and significant estimates made by management, as well as evaluating the overall financial statement presentation.

In our opinion, these financial statements present fairly, in all material respects, the financial position of the Society as at June 30, 2009 and the results of its operations and its cash flows for the year then ended in accordance with Canadian generally accepted accounting principles. As required by the Society Act of British Columbia, we report that, in our opinion, these principles have been applied on a basis consistent with that of the preceding year.

Blue Fish Group

Chartered Accountants

Burnaby, B.C.
September 14, 2009

RICHMOND GATEWAY THEATRE SOCIETY

Statement of Financial Position

June 30, 2009

	2009	2008
ASSETS		
CURRENT		
Cash and term deposits (Note 4)	\$ 445,980	\$ 226,871
Accounts and grants receivable	35,758	10,405
Inventory	4,252	3,771
Prepaid expenses	10,172	17,477
Prepaid production expenditures	54,614	44,057
Deferred Web Sales development expenditures (Note 2)	3,678	7,355
	<u>554,454</u>	<u>309,936</u>
PROPERTY AND EQUIPMENT (Note 3)	18,593	-
TERM DEPOSITS RESTRICTED FOR ENDOWMENT FUNDS	328,193	320,697
	<u>\$ 901,240</u>	<u>\$ 630,633</u>
LIABILITIES AND NET ASSETS		
CURRENT		
Accounts payable and accrued liabilities	\$ 200,893	\$ 128,578
Deferred operating revenue	462,682	339,355
	<u>663,575</u>	<u>467,933</u>
COMMITMENTS AND CONTINGENCIES (Note 7)		
NET ASSETS (DEFICIENCY)		
Externally restricted administration fund	(77,017)	(78,573)
Internally restricted general endowment fund	318,193	310,697
Externally restricted Rotary endowment fund	10,000	10,000
Internally restricted grant fund	6,100	6,019
Unrestricted operating fund	(19,611)	(85,443)
	<u>237,665</u>	<u>162,700</u>
	<u>\$ 901,240</u>	<u>\$ 630,633</u>

ON BEHALF OF THE BOARD

Ed Laurer Board Chair

[Signature] Treasurer

See accompanying notes to financial statements



BLUE FISH GROUP
CHARTERED ACCOUNTANTS

RICHMOND GATEWAY THEATRE SOCIETY
Statement of Operations and Fund Balances
Year Ended June 30, 2009

	Operating fund (Schedule 1)	Administration fund (Schedule 2)	Grant fund (Schedule 3)	Rotary Endowment fund	General Endowment fund	2009	2008
Revenues	\$ 1,205,523	\$ 989,664	\$ -	\$ 451	\$ 11,244	\$ 2,206,882	\$ 2,016,414
Expenditures	1,139,691	988,108	3,667	451	-	2,131,917	1,959,660
Excess (deficiency) of revenues over expenditures	65,832	1,556	(3,667)	-	11,244	74,965	56,754
Interfund transfers (note 4)	-	-	3,748	-	(3,748)	-	-
Fund balance, beginning of year	(85,443)	(78,573)	6,019	10,000	310,697	162,700	105,946
Fund balance, end of year	\$ (19,611)	\$ (77,017)	\$ 6,100	\$ 10,000	\$ 318,193	\$ 237,665	\$ 162,700

See accompanying notes to financial statements



BLUE FISH GROUP
 CHARTERED ACCOUNTANTS

RICHMOND GATEWAY THEATRE SOCIETY

Statement of Cash Flows

Year Ended June 30, 2009

	2009	2008
OPERATING ACTIVITIES		
Excess (deficiency) of revenues over expenses	\$ 74,965	\$ 56,754
Item not affecting cash:		
Amortization of property and equipment	2,303	-
	<u>77,268</u>	<u>56,754</u>
Changes in non-cash working capital:		
Accounts and grants receivable	(25,353)	11,346
Inventory	(481)	1,686
Prepaid expenses	7,305	(7,728)
Prepaid production expenditures	(10,557)	11,841
Accounts payable and accrued liabilities	72,315	(1,404)
Deferred operating revenue	123,327	74,014
Deferred Web Sales development expenditures	3,677	3,678
	<u>170,233</u>	<u>93,433</u>
Cash flow from operating activities	<u>247,501</u>	<u>150,187</u>
INVESTING ACTIVITIES		
Purchase of property and equipment	(20,896)	-
Cash flow used by investing activities	<u>(20,896)</u>	<u>-</u>
INCREASE IN CASH FLOW	226,605	150,187
CASH - Beginning of year	<u>547,568</u>	<u>397,381</u>
CASH - End of year	<u>\$ 774,173</u>	<u>\$ 547,568</u>
CASH CONSISTS OF:		
Cash and term deposits	\$ 445,980	\$ 226,871
Term deposits restricted for endowment funds	328,193	320,697
	<u>\$ 774,173</u>	<u>\$ 547,568</u>

See accompanying notes to financial statements



BLUE FISH GROUP
CHARTERED ACCOUNTANTS

RICHMOND GATEWAY THEATRE SOCIETY

Notes to Financial Statements

Year Ended June 30, 2009

1. PURPOSE OF ORGANIZATION

The Richmond Gateway Theatre Society was founded in 1982, is incorporated as a non-profit society under the Society Act of British Columbia and is tax-exempt as a registered charity and charitable organization under the Income Tax Act.

The purpose of the society is to manage and operate the Richmond Gateway Theatre on behalf of the City of Richmond (the "City") and its citizens. The direct revenue sources of the Society are not sufficient to cover its total expenditures and, as a result, the continued support of the City of Richmond is required to finance the building and administration costs of the Society.

2. SUMMARY OF SIGNIFICANT ACCOUNTING POLICIES

Inventory

Inventory is valued at the lower of cost and net realizable value.

Property and equipment

Property and equipment are recorded at cost less accumulated amortization. Amortization on additions during the year is pro-rated based on the number of months in the year since acquisition. Amortization rates are designed to amortize the assets over their estimated useful lives. The amortization rates are as follows:

Computer equipment	3 years	straight-line method
Computer software	3 years	straight-line method
Office equipment and furniture	3 years	straight-line method

Under the terms of the agreement between the Richmond Gateway Theatre and the City of Richmond, certain property improvements, equipment and furniture directly acquired by the City on behalf of the Society are considered property of the City and are not recorded in these financial statements.

Deferred Web Sales development expenditures

In 2007, the Society incurred expenditures in developing a "Web Sales" program for the sale of theatre tickets through the internet. The expenditures included upgrades to software, equipment, training, website development and design, and other related costs. As revenue will be earned over the upcoming future years and as these expenditures are expected to have an enduring benefit, the Board of Directors resolved to amortize these deferred expenditures starting in 2008 for a period of 3 years on a straight-line basis.



BLUE FISH GROUP
CHARTERED ACCOUNTANTS

RICHMOND GATEWAY THEATRE SOCIETY

Notes to Financial Statements

Year Ended June 30, 2009

2. SUMMARY OF SIGNIFICANT ACCOUNTING POLICIES *(continued)*

Revenue recognition and basis of financial statement presentation

The Society follows the deferral method of accounting for contributions.

Unrestricted contributions are recognized as revenue when received or receivable if the amount to be received can be reasonably estimated and collection reasonably assured. Production revenue and expenses are matched whereby revenue received for future productions is recorded as deferred operating revenue and expenditures made for future productions are recorded as prepaid production expenses.

From time to time, the Board of Directors (the "Board") may impose certain restrictions on fund balances. These amounts are presented on the statement of financial position and statement of operations and fund balances. These internally restricted amounts are not available for other purposes without approval of the Board of Directors.

Endowment contributions are recognized as direct increases in net assets. Externally restricted contributions are recognized as revenue in the year in which the related expenses are recognized.

Administration fund

This fund represents the cumulative excess (deficiency) of revenues over expenditures relating to the management and operation of the Richmond Gateway Theatre. The revenue for this fund is received from the City and expenditures are restricted by an annual budget which is approved by the City.

General endowment fund

The Society's Board of Directors has internally restricted resources for endowment purposes. Investment income on this amount is allocated based on the Board's discretion. These internally restricted amounts are unavailable for other purposes without approval of the Board of Directors.

Rotary endowment fund

This externally restricted fund represents deposits resulting from a grant of \$10,000 from the Richmond Sunrise Rotary Club. Interest earned on these deposits is to be used for bursaries and scholarships of the summer musical theatre program.

Net assets internally restricted for grants

These contributions have been set aside for distribution to various community groups to assist with special production costs, use of Richmond Gateway Theatre where not otherwise possible, educational costs or special events.



BLUE FISH GROUP
CHARTERED ACCOUNTANTS

RICHMOND GATEWAY THEATRE SOCIETY

Notes to Financial Statements

Year Ended June 30, 2009

2. SUMMARY OF SIGNIFICANT ACCOUNTING POLICIES *(continued)*

Measurement uncertainty

The preparation of financial statements in accordance with generally accepted accounting principles requires management to make estimates and assumptions that affect the reported amount of assets and liabilities and disclosure of contingent assets and liabilities at the date of the financial statements and the reported amounts of revenues and expenditures during the reporting period. These estimates are reviewed periodically, and, as adjustments become necessary they are reported in earnings in the period in which they become known.

Contributed services

Volunteers contribute their time every year to assist the Society in carrying out its activities. The value of contributed services of a non-remunerative nature is not recognized in these financial statements.

Financial instruments

The organization has adopted CICA Handbook Section 3855, Financial Instruments. This new standard has been adopted on a prospective basis with no restatement required.

This standard requires all financial instruments within its scope to be included on the organization's statement of financial position and measured either at fair value or, in certain circumstances when fair value may not be considered most relevant, at cost or amortized cost. Changes in fair value, if any, are to be recognized in the statements of revenue and expenditures and the statement of net assets.

All financial instruments are classified into one of the following five categories: held-for-trading, held-to-maturity, loans and receivables, available-for-sale financial assets, or other financial liabilities. Initial and subsequent measurement and recognition of changes in the value of financial instruments depends on their initial classification.

The organization's financial instruments consist of cash, term deposits, accounts and grants receivable and accounts payable and accrued liabilities. It is management's opinion that the organization is not exposed to significant interest, currency or credit risks arising from these financial instruments. The fair values of the financial instruments approximate their carrying values, given the short-term nature of these instruments.

In accordance with this new standard, the organization has classified its financial instruments as follows:

- Cash and cash equivalents are classified as held-for-trading. Held-for-trading financial instruments are measured at fair value at the balance sheet date with all related income, expenses, gains and losses recognized in net income.
- Interest and accounts receivable is classified as loans and receivables. Loans and receivables are measured at amortized cost.



BLUE FISH GROUP
CHARTERED ACCOUNTANTS

RICHMOND GATEWAY THEATRE SOCIETY

Notes to Financial Statements

Year Ended June 30, 2009

2. SUMMARY OF SIGNIFICANT ACCOUNTING POLICIES *(continued)*

Financial Instruments, *(continued)*

- Term deposits are classified as held-to-maturity. Held-to-maturity financial assets are those financial assets the organization intends to hold until their maturity date and consist of guaranteed investment certificates (GICs). Held-to-maturity financial assets are measured at amortized cost.
- Accounts payable and accrued liabilities are classified as other financial liabilities. Other financial liabilities are measured at amortized cost.

The adoption of these new accounting standards has no effect on the current and prior years' financial statements.

Use of estimates

The preparation of financial statements in conformity with Canadian generally accepted accounting principles requires management to make estimates and assumptions that affect the amounts reported in the financial statements and accompanying disclosures. Although these estimates are based on management's best knowledge of current events and actions the organization may undertake in the future, actual results may differ from the estimates.

3. PROPERTY AND EQUIPMENT

	Cost	Accumulated amortization	2009 Net book value	2008 Net book value
Computer equipment	\$ 7,810	\$ -	\$ 7,810	\$ -
Computer software	3,875	-	3,875	-
Office equipment and furniture	9,211	2,303	6,908	-
	<hr/>	<hr/>	<hr/>	<hr/>
	\$ 20,896	\$ 2,303	\$ 18,593	\$ -

The computer equipment and software purchased during the current fiscal year were not fully implemented in the operations during the year. Management and the Board of Directors have resolved to amortize these purchases starting in the next fiscal year over a 3 year period, on a straight-line basis.



BLUE FISH GROUP
CHARTERED ACCOUNTANTS

RICHMOND GATEWAY THEATRE SOCIETY

Notes to Financial Statements

Year Ended June 30, 2009

4. CASH AND TERM DEPOSITS

The cash and term deposit balance is made up of deposits less bank indebtedness and includes \$6,100 (2008 - \$6,020) in respect of the grant account, which is internally restricted.

5. INTERFUND TRANSFERS

1/3 of the interest earned on General Endowment fund is appropriated by the Board to the Grant fund.

6. SUPPLEMENTAL CASH FLOW INFORMATION

	<u>2009</u>		<u>2008</u>
Cash paid for interest and bank charges	\$ 17,594	\$	16,224
Cash received as interest	10,168		14,788

During the year, the organization had cash flows arising from interest and bank charges paid and interest received as noted above.

7. COMMITMENTS AND CONTINGENCIES

Letters of guarantee:

The Society has a letter of guarantee outstanding in the amount of \$25,000 (2008 - \$25,000) which is not recorded in these accounts. The letter of guarantee expires on August 5, 2010 and is provided to the Canadian Actors' Equity Association and its members as security for related obligations of the Society.

Production royalties:

As of June 30, 2009, the Society has obligations to pay minimum royalties of \$11,852 (2008 - \$250) to playwrights relating to productions taking place in the fiscal 2010 season. Royalties are payable on various dates in fiscal 2010, and have not been recorded as liabilities in these accounts.

Operating Leases:

The Society is committed under certain lease agreements for equipment. Future minimum lease payments on these leases, for the next five years, are as follows:

2010	\$ 7,001
2011	6,680
2012	6,680
2013	6,680
2014	5,677
	<u>\$ 32,718</u>



BLUE FISH GROUP
CHARTERED ACCOUNTANTS

RICHMOND GATEWAY THEATRE SOCIETY

Notes to Financial Statements

Year Ended June 30, 2009

8. FUNDING FROM THE CITY OF RICHMOND AND ECONOMIC DEPENDENCE

The City of Richmond owns the theatre in which the Society is located, and the property and equipment therein, with the exception of the property and equipment included in the Society's statement of financial position. The Society is economically dependent on the support of the City of Richmond and has an operating agreement with the City of Richmond. The City provides annual funding, based on the Society's annual application. Total funding from the City of Richmond for 2009 was \$989,664 (2008 - \$905,850).



BLUE FISH GROUP
CHARTERED ACCOUNTANTS

RICHMOND GATEWAY THEATRE SOCIETY
Statements of Operations and Fund Balances - Operating Fund (Schedule 1)
Year Ended June 30, 2009

	2009	2008
REVENUE		
Main Stage and Studio productions	\$ 610,348	\$ 550,788
Academy	120,120	97,676
Play development	571	462
Rentals	191,470	209,731
Sponsorships	43,400	30,500
Special events and fundraising	40,528	41,720
Grants	124,697	94,589
Memberships and donations	26,291	22,510
Bar, net	7,003	11,213
Miscellaneous, box office surcharge, parking and equipment rentals	35,840	37,324
Interest income	5,255	1,731
	<u>1,205,523</u>	<u>1,098,244</u>
EXPENDITURES		
Main Stage and Studio productions	698,169	672,074
Academy	155,162	118,654
Play development	39,694	26,520
Volunteer program expenses	4,447	3,951
Rentals	78,734	87,586
Sponsorship and membership expenses	6,899	8,567
Special events and fundraising	19,001	16,726
Subscription and advertising	99,987	82,996
Credit card, bank charges and interest	17,249	15,947
Miscellaneous, box office and parking expenses	20,349	18,179
	<u>1,139,691</u>	<u>1,051,200</u>
EXCESS OF REVENUE OVER EXPENDITURES	65,832	47,044
FUND BALANCE, beginning of year	<u>(85,443)</u>	<u>(132,487)</u>
FUND BALANCE, end of year	<u>\$ (19,611)</u>	<u>\$ (85,443)</u>

See accompanying notes to financial statements



BLUE FISH GROUP
CHARTERED ACCOUNTANTS

RICHMOND GATEWAY THEATRE SOCIETY
Statements of Operations and Fund Balances - Administration Fund
(Schedule 2)

Year Ended June 30, 2009

	2009	2008
REVENUE		
Funding from the City of Richmond <i>(Note 8)</i>	\$ 989,664	\$ 905,850
EXPENDITURES		
Salaries and benefits	847,182	790,628
Office, supplies, delivery and other	54,525	39,690
Theatre supplies	30,106	21,182
Insurance	14,165	14,015
Travel, training and staff development	13,724	13,818
Association fees	6,968	6,254
Telephone	7,312	6,908
Legal and accounting	6,811	5,560
Computer support and software	4,683	6,380
Amortization of property and equipment	2,303	-
Interest and bank charges	329	264
	<u>988,108</u>	<u>904,699</u>
EXCESS OF REVENUE OVER EXPENDITURES	1,556	1,151
FUND BALANCE, beginning of year	<u>(78,573)</u>	<u>(79,724)</u>
FUND BALANCE, end of year	<u>\$ (77,017)</u>	<u>\$ (78,573)</u>

See accompanying notes to financial statements



BLUE FISH GROUP
 CHARTERED ACCOUNTANTS

RICHMOND GATEWAY THEATRE SOCIETY
Statements of Operations and Fund Balances - Grant Fund (Schedule 3)
Year Ended June 30, 2009

	2009	2008
EXPENDITURES		
Distribution of grants	\$ 3,650	\$ 3,350
Bank charges	17	13
	<u>3,667</u>	<u>3,363</u>
TRANSFER OF INTEREST FROM		
General endowment fund	<u>3,748</u>	<u>3,974</u>
EXCESS OF TRANSFER OF INTEREST OVER EXPENDITURES	81	611
FUND BALANCE, beginning of year	<u>6,019</u>	<u>5,408</u>
FUND BALANCE, end of year	<u>\$ 6,100</u>	<u>\$ 6,019</u>

See accompanying notes to financial statements



BLUE FISH GROUP
CHARTERED ACCOUNTANTS

Endowment Committee Report



The Richmond Gateway Theatre Society has an endowment fund that is internally restricted by the Board of Directors. The fund began with \$199,000 left over from the building fund and was given to RGTS by the City of Richmond. RGTS created policy that states that 1/3 of the interest from the funds are to be used for grants to the community. The remaining 2/3 were to be used for operations. To date, the RGTS has reinvested the 2/3 in the fund to enable the fund to grow. In 2008-2009, the fund held \$318,193.

The Endowment Committee meets annually as a jury to distribute the grant funds available from the interest from that fiscal year. The committee received six applications totalling \$10,700. There was \$4,151.66 available which was distributed in the following way:

- Richmond Christian Secondary School \$ 500 for rental fees
- Northwest Piano Ensemble Society \$ 1150 for rental and adjudicator costs
- Gateway Academy Bursaries \$ 1500 for bursaries for families
- Pacific Piano Competition \$ 1000 towards artists' fees

Garth Edwards
Chair, Endowment Committee

Gateway Administration

Artistic and Executive Director Simon Johnston
General Manager Suzanne Haines

Artistic Associate Natasha Nadir
Administrative Assistant Robin White
Production Manager & Technical Director Brian Heath
Head Carpenter Bill Davey
Head Electrician Ed Arteaga
Finance Officer Brent Wang
Finance Assistant Kelly Ye
Manager, Marketing & Publicity Sherry Elasoff
Marketing Assistant Vincci Li
Donor & Member Associate Sheilagh Cahill
Corporate Relations Ashley Li
Manager, Presentations & Rentals Vivienne Stonier
Rentals Assistant Jackie Schwarz
Manager, Gateway Academy Elizabeth Conway

Spencer Bach Dawn Ewen Joshua Reynolds
Eileen Barrett Ming Hudson Kim Steger
Lauren Bowler Natasha Nadir Barbara Tomasic
Ruth Brown Tracy Neff Linzi Voth
Sarah Brown Jack Patterson Melissa Young
Damon Calderwood Shawna Perry

Building Services Coordinator Paul Bartlett
Building Services Assistant Mesfin Ayalew
Building Services Assistant Jade Phung
Box Office Assistant Evelin Fowler
Box Office Assistant Yvette Scholten
Box Office Assistant Nancy Zeigler
Manager, Volunteers & Audience Services Melissa Tsang
Volunteer & Audience Services Assistant Holly Jones
Program Intern Kate Prefontaine
Marketing Intern Megan Battersby
Production Intern Jamie Von Sacken
Bartender Stephanie Cornish
Bartender Kent Gallie
Bartender Raj Hehar
Bartender Rachel Sherwood
Bartender Stephanie Wilson

Satellite Companies

Pacific Piano Competition

Dorothy Lau
Trudy Morse

Pangaea Arts

Heidi Specht
Lenard Stanga



Annual Report to City Council

25th Year July 2008 - June 2009

25 Years in the making

Mission Statement

Gateway Theatre is a welcoming and inclusive regional theatre for Richmond and its surrounding communities. Encouraging participation and cultural diversity, we strive for excellence and leadership in the development and production of live, professional theatre and programs that connect the community.

Core Values: Leadership, Respect, Inclusivity, Quality

25 Years in the making

Programs

Live Professional Theatre

- Main Stage Series
- Studio Series
- Play Development
 - Commissions
 - Readings
 - Workshops
 - Dramaturgy
- Gateway Academy

Community Engagement

- Partnerships:
 - City of Richmond
 - Corporate partners
- Volunteer Program
- Rentals Program
- Mentorship Program
- Special Events

25 Years in the making

Main Stage Series

Leading Ladies October 9 – 25, 2008

I work in the arts and have been to many productions all over the world, and I can honestly say that my experience at the Gateway Theatre was one the very best I've ever had.

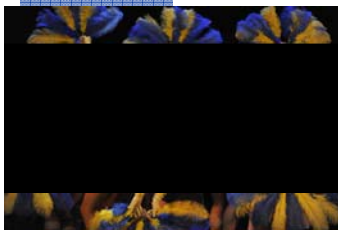
We were crying we were laughing so hard. Thanks to all for giving us an amazing performance and making our night out so enjoyable once again.

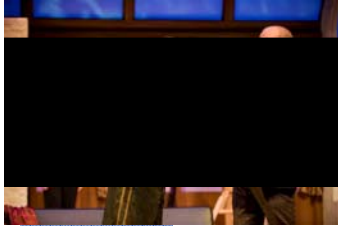
Guys & Dolls December 11-31, 2008

I just want to thank you and express how wonderful the experience of seeing Guys and Dolls was. The production and performances were one of the best I have seen in a long time.

It was our first visit to the Gateway Theatre and I was impressed. I loved the ambience of the theatre - small, intimate and friendly.

25 Years in the making



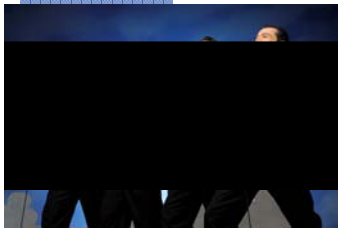


Main Stage Series

The Art of Murder February 5-21, 2009

Suspenseful, surprising and hilarious in every way!

One minute we were laughing our heads off and the next we were scared out of our minds. So many twists and turns!!! We thought all four actors did an outstanding job!



Forever Plaid April 2 – 18, 2009

300% more fun than I expected!

I enjoyed every show this season but Forever Plaid last night was just wonderful. It brought back so many great memories. We will be reserving our seats for next season.

I want to see it again, Bravo!

25 Years in the making



Studio Series

Summer of My Amazing Luck

March 5-14, 2009

Saw the Sat matinee and just wanted to tell you how much I enjoyed it. Very touching and funny. Thanks to you and your fellow thespians for a lovely time at the theatre. You were all, well, amazing!

It reminds us that no matter how hard life gets, humour often carries us through to better days and to clearer understandings of ourselves and life.

Train April 30 – May 9, 2009

The charming Maiko Yamamoto and her very likeable father bring their own special knowledge and meaning to a unique and radiant play.



Maiko Bae Yamamoto's playfully surreal little drama offered a very personal journey through some theatrical territory that from the start proved as fascinating as it was unfamiliar.

25 Years in the making

SceneFirst

- ✓ Over 70 plays submitted from across Canada
- ✓ 3 selected to read with professional actors
 - *If Romance is Dead....Who Killed It?* By Tracey Power (Vancouver)
 - *Out of the Blue* By Laurie Murdoch (Toronto)
 - *The Darling Buds of May* By Simon Bradbury (Vancouver)

25 Years in the making

Gateway Academy

“As a second language speaker and a parent in Richmond, I am so glad that Gateway Theatre offers such a good academy class for young people. The instructors are professional, and the content of the class is practical. My child not only gained arts performance skills, but also enhanced her language skills, learning more about Canadian culture along the way.”

- ✓ Acting, musical theatre, and technical training for ages 8 – 18
- ✓ Professional actors, directors & choreographers instruct our classes

25 Years in the making

Facility Rentals

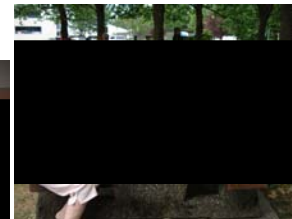
The facilities were
used 921 times



- ✓ Rented to 41 groups (professional and community)
- ✓ 36 groups on a waiting list to use facility
- ✓ For performances, film locations, receptions, meetings
- ✓ Total attendance for all uses in 2008-2009 was 55,683

25 Years in the making

Volunteer Program



- 160 volunteers of all ages
- 51 volunteers with 10+ years of service
- 10,550 volunteer hours donated
- Value of service equals \$ 102,965

25 Years in the making

Outreach & Mentorship

RBC Outreach Program

- 4 times per year
- Students learn about the productions on tech day
- Students return to see the show

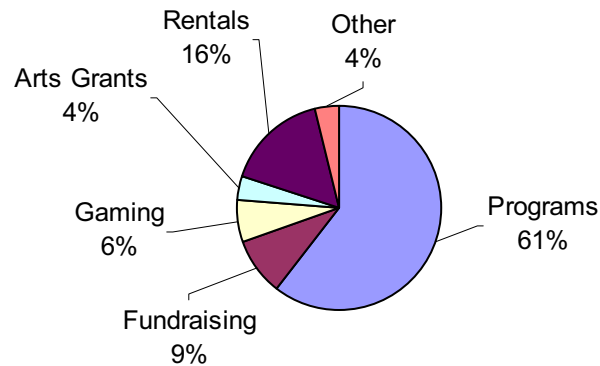
Satellite Program – Pacific Piano Competition



25 Years in the making

Financial Overview

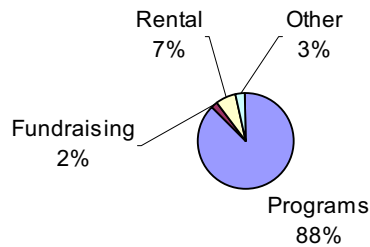
Revenues



25 Years in the making

Financial Overview

Expenses



25 Years in the making

Sponsors

Sustaining Supporter
Operating Support

Outreach Sponsor
Accommodation Sponsor
Ticket Sponsor
Opening Night Sponsor

Performance Sponsors
 The Fairmont Vancouver Airport Hotel
 Mad Greek Restaurant
 Univar Canada Ltd

Corporate Support
 Kaltech Manufacturing
 Caltron Office Furniture
 Stereo Printers
 Safeflight Consulting Ltd.
 Michael Bailey & Associates
 Bank of Montreal

The City of Richmond

Province of British Columbia
 BC Arts Council
 RBC Foundation
 Accent Inns, Vancouver - Airport
 Dorset Realty
 Marriott Vancouver Airport Hotel

Media Sponsors

Richmond Review
 Richmond News
Raffle Sponsors
 Cool Secret Spa
 Domaine do Chaberton
 Holiday Inn – Airport
 Mad Greek
 Raintree Wellness Spa
 Starbucks
 The Whole Being Yoga Co.

Project Support

Innovation Networks
 The City of Richmond
 The Hamber Foundation
 The Leon and Thea Koerner Foundation
 The Vancouver Foundation
 Metro Vancouver
 Richmond Chinatown Lions Club
 The Sunrise Rotary

25 Years in the making



2008-2009 Board of Directors

Diane Cousar, **Chair**

Michael O'Brien, **Vice Chair**

Leni Dinnell, **Treasurer**

Keith Liedtke, **Secretary,**

Sue Halsey-Brandt, **City Representative**

Lori Chalmers, Ruth Collison, Paul Corcoran,

Jack Evans, Rob Fleming, Chris Morris,

Kelly Myers, and

Debbie Tobin

25 Years in the making