



City of Richmond

Report to Committee

To: Public Works and Transportation Committee

Date: September 3, 2013

From: John Irving, P.Eng. MPA
Director, Engineering

File: 10-6340-01/2013-Vol
01

Re: **Detailed Architectural Features**
No. 1 Road North and Williams Road Drainage Pump Stations

Staff Recommendation

That the attached report "Detailed Architectural Features – No. 1 Road North and Williams Road Drainage Pump Stations" dated September 3, 2013 from the Director, Engineering, be received for information.

John Irving, P.Eng. MPA
Director, Engineering
(604-276-4140)

Att. 3

REPORT CONCURRENCE			
ROUTED TO:	CONCURRENCE	CONCURRENCE OF GENERAL MANAGER	
Arts, Culture & Heritage	<input checked="" type="checkbox"/>		
REVIEWED BY DIRECTORS	INITIALS: DW	REVIEWED BY CAO	INITIALS:

Staff Report

Origin

The Williams Road Drainage Pump Station was constructed in 1964 and the No. 1 Road North Drainage Pump Station was constructed in 1976. Council approved upgrades to these drainage pump stations as part of the 2011 and 2012 Capital Program, and construction of both has been substantially completed over the last year.

The purpose of this report is to provide Council with information regarding the final detailed architectural features that will be installed at both drainage pump stations.

This initiative is in line with Council Term Goal 9.1:

“Build culturally rich public spaces across Richmond through a commitment to strong urban design, investment in public art and place making.”

Analysis

Council endorsed the general layout and architectural features of the designs for the Williams Road Drainage Pump Station Upgrade and the No. 1 Road North Drainage Pump Station Upgrade in December 2011 and February 2012, respectively. Installation of the final architectural features is the only work remaining to complete the pump stations.

For the No. 1 Road North Drainage Pump Station Upgrade, City staff invited nearby local schools to be involved in the process to integrate interpretive features with the architectural design. Spul’u’kwuks Elementary School accepted the invitation to be involved in this process.

City staff retained Richmond based writer and poet Joanne Arnott, experienced in working with school children, to assist in a series of workshops at the school. On March 13th and 15th, 2013, the role of pump stations, what makes them work and why they are important in Richmond was presented to grade four students at the school. The students were encouraged to "brainstorm" and select meaningful words that could be placed on the façade of the new pump station as an architectural feature (**Attachment 1**). The text panels will be painted in colours to complement the coloured glass panels on the façade fronting River Road (**Attachment 2**).

The selected words were provided by the schoolchildren, and speak to the cycle of storm water management and its relationship to the sensitive environment along the Fraser River. As a reference to the historical and cultural context of the pump station on traditional First Nation territory, two of the words have been translated into the Musqueam language: sləməx^w (rain water) and shəli (ecology).

Once the text panels have been installed, City staff plan to invite the participating students to a field trip to see the new pump station, with a tour led by staff.

For the Williams Road Drainage Pump Station Upgrade, City staff retained the services of an architectural firm to design the public realm enhancements to the drainage pump station in order to improve its physical appearance and strive to meet public expectations for a well designed high quality civic infrastructure. Design enhancements include the alluvial pattern integrated into

the concrete outflow channel, surface treatment to the concrete deck, and the cladding to the structure.

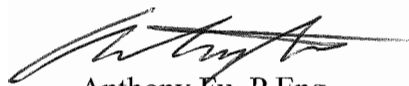
The selected cladding material for the structure is a punched aluminum panel. The suppliers for the aluminum panel cladding system are working with a design firm to provide an integral digital graphic image embedded on the panel surface (**Attachment 3**). The design was reviewed by a staff team representing Engineering, Parks and Arts, Cultural and Heritage Services.

Financial Impact

None.

Conclusion

Upgrades of the Williams Road Drainage Pump Station and the No. 1 Road North Drainage Pump Station were approved by Council in the 2011 and 2012 Capital Program. Construction of both pump stations is now substantially complete. The remaining installation of the architectural features will enhance the upgraded stations and the surrounding area.



Anthony Fu, P.Eng.
Project Engineer
(604-247-4905)
AF:af



Eric Fiss
Public Art Planner
(604-247-4612)

No. 1 Road Drainage Pump Station Architectural Features – Proposed Text

stəmæx^w

nature

powerful

shimmering

glistening

shəli

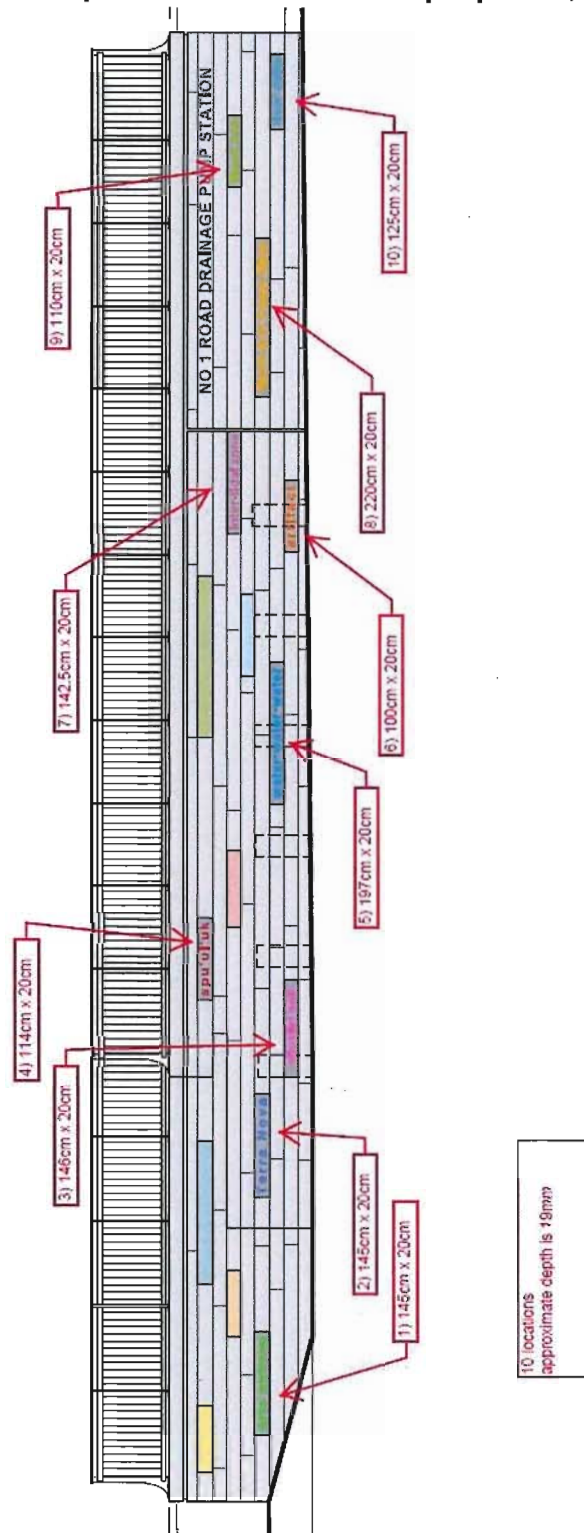
flowing

environment

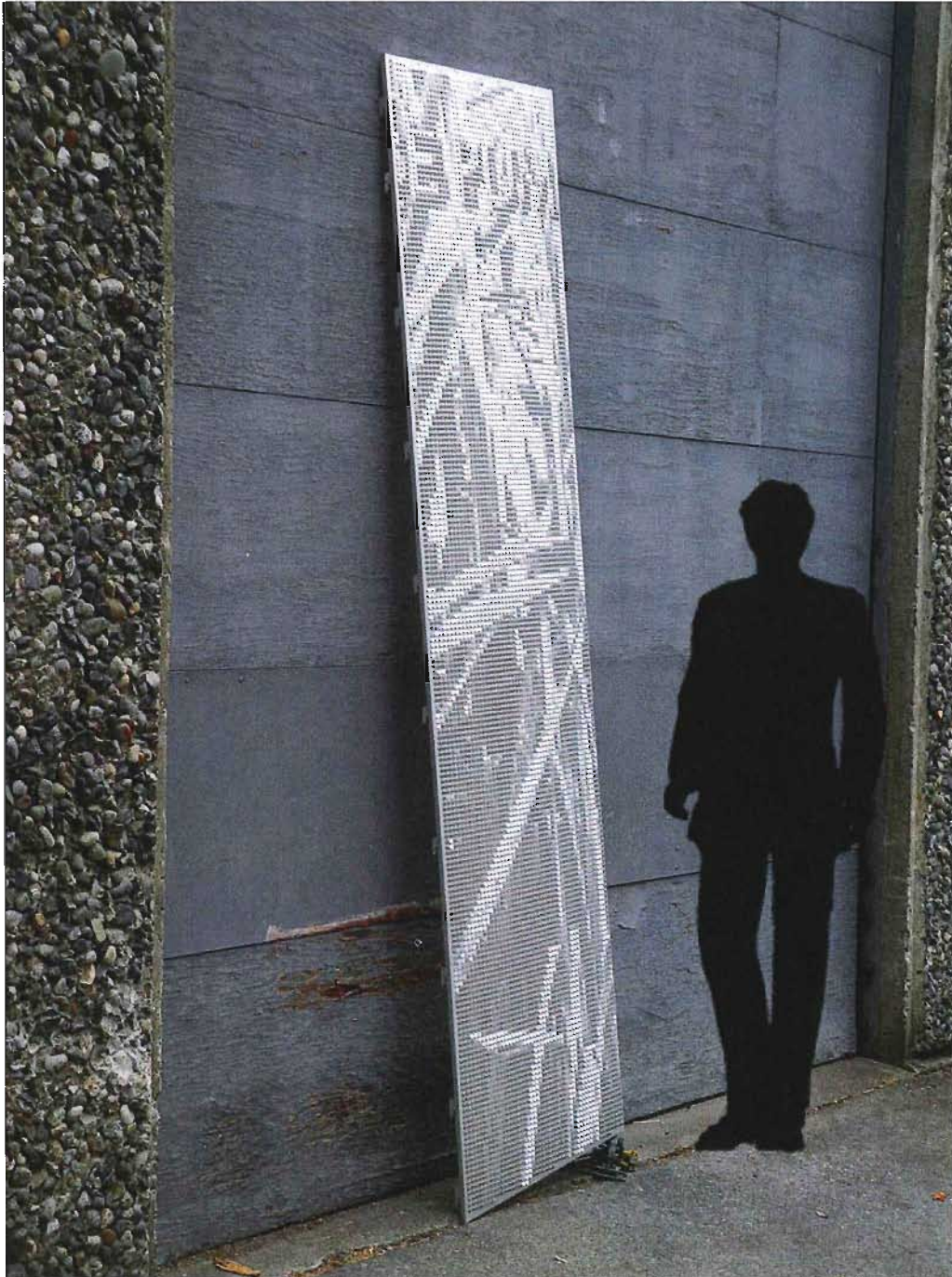
pumping

splashing

No. 1 Road North Drainage Pump Station – South Wall
Location of Text Panels and Coloured Glass Windows
 (Note: Sample text for illustration purposes, only)

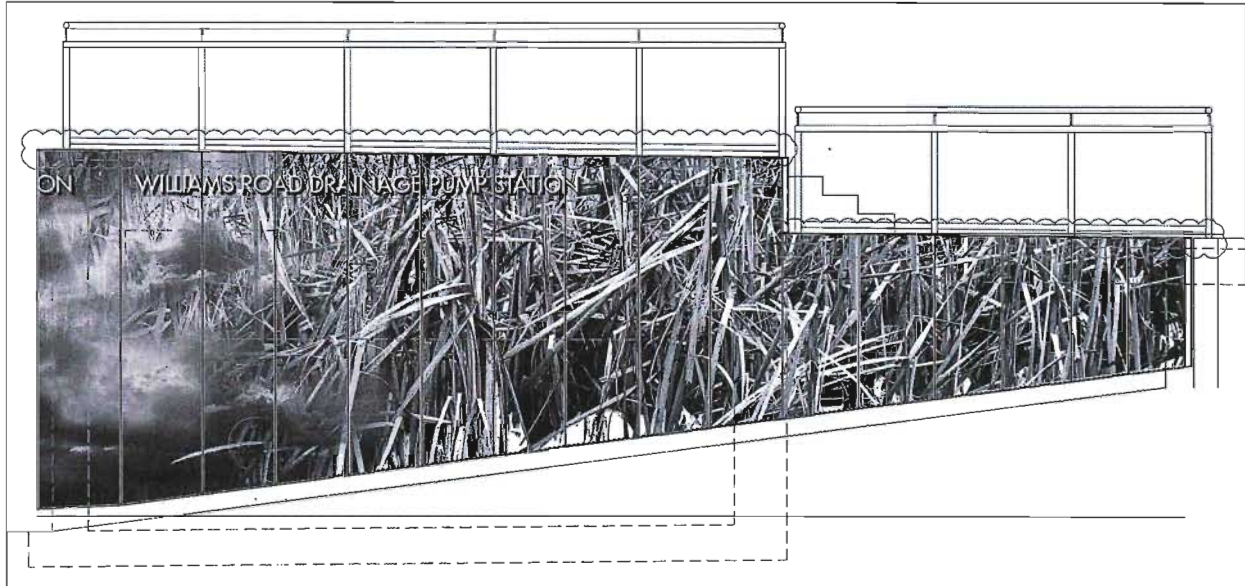


Williams Road Drainage Pump Station Architectural Features

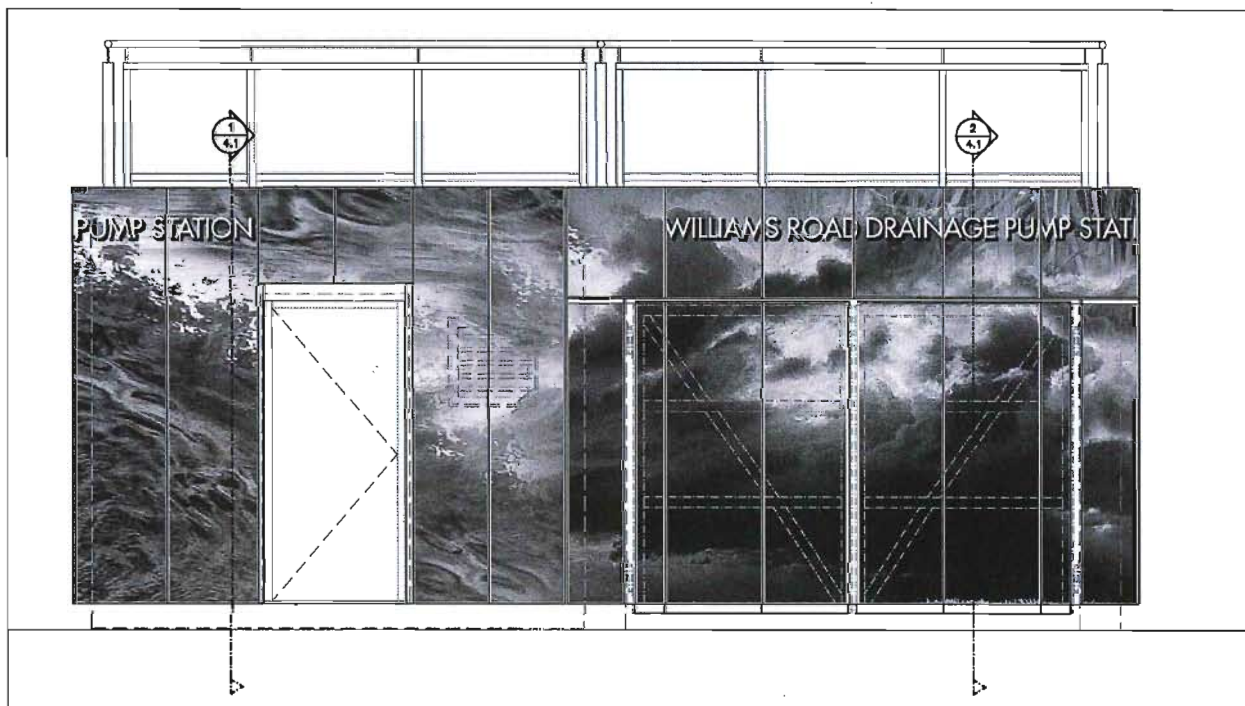


3ft wide x 10ft tall Sample Architectural Panel

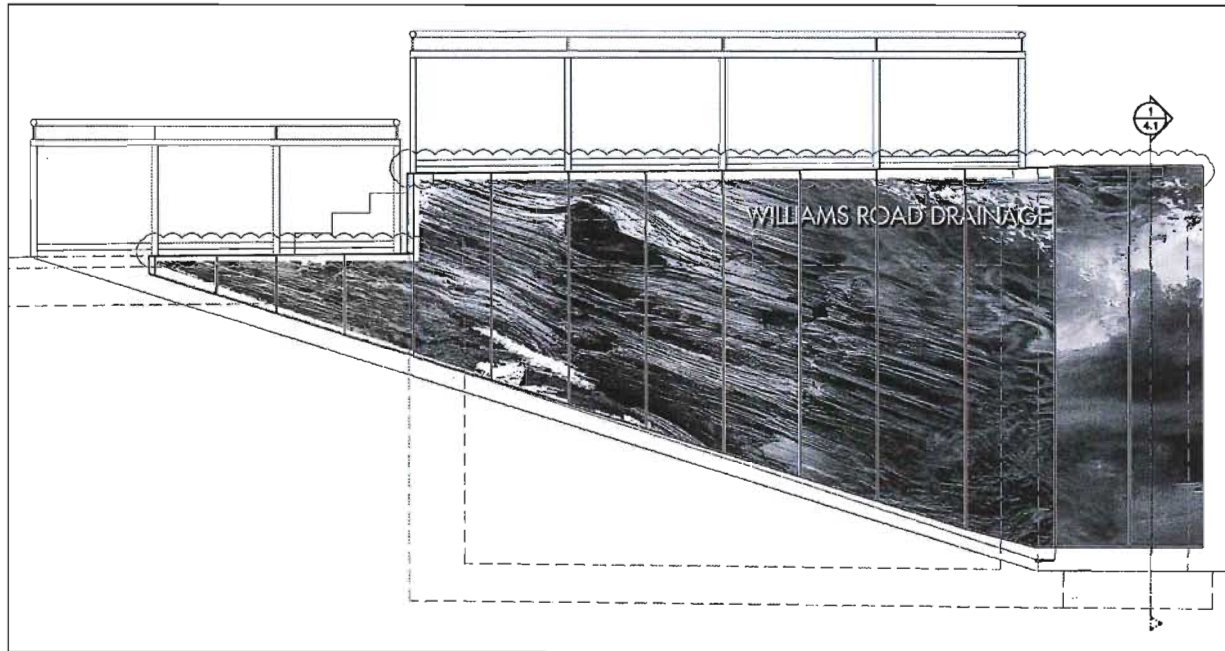
5'-6" tall silhouette shown for scale



Preliminary Layout – North Wall (Station labelling to be adjusted)



Preliminary Layout – East Wall (Station labelling to be adjusted)



Preliminary Layout – South Wall (Station labelling to be adjusted)