



To: Community Safety Committee

Date: January 30th 2012

From: Mike Redpath
Senior Manager, Parks

File: 06-2345-20-ILAN1/Vol
01

Re: Canadian Coast Guard Auxiliary (Station 10) Proposed Boathouse Location

Staff Recommendation

That:

1. Scotch Pond be approved as the location for the Canadian Coast Guard Auxiliary Pacific Region - Station 10 to moor its boathouse; and
2. Agreement terms for the moorage of the Canadian Coast Guard Auxiliary – Station 10 be drafted and brought back to Council for approval no later than March 30th 2012.

Mike Redpath
Senior Manager, Parks
(604-247-4942)

Att. 7

FOR ORIGINATING DEPARTMENT USE ONLY			
ROUTED TO: Arts, Culture & Heritage RCMP	CONCURRENCE Y <input checked="" type="checkbox"/> N <input type="checkbox"/> Y <input checked="" type="checkbox"/> N <input type="checkbox"/>		CONCURRENCE OF GENERAL MANAGER
	REVIEWED BY TAG 	YES <input checked="" type="checkbox"/> NO <input type="checkbox"/>	REVIEWED BY CAO

Staff Report

Origin

On Wednesday, August 24th 2011 staff received a letter from the Canadian Coast Guard Auxiliary Pacific Region – Station 10 (Attachment 1) requesting assistance with establishing a permanent Search and Rescue Station (SAR) in Steveston including the moorage of a Boathouse. The purpose of this report is to request Council approval for locating the Boathouse at historic Scotch Pond in Steveston and for staff to continue to work with Station 10 and the Scotch Pond Heritage Cooperative to determine the best moorage location within Scotch Pond and develop terms for an agreement outlining the relationship between the City and the Canadian Coast Guard Auxiliary – Station 10 related to the boathouse.

This report responds to Council's term goal of ensuring Richmond remains a safe and desirable community to live, work and play.

Analysis

The Canadian Coast Guard Auxiliary Pacific Region - Station 10 (the Station) currently serves a search and rescue function in both the Middle and South Arms of the Fraser River. The Station currently has a vessel (Auxiliary 6) moored in the Middle Arm on City land. In the South Arm, the Station currently has its vessel (Auxiliary 7) tied up in Steveston Harbour and its boathouse (attachment 2) is moored in Steveston Harbour and inaccessible for regular use by the Station.

Station 10 has approximately 40 volunteer members that contribute to the community on an ongoing basis. In 2010, members assisted 44 people and logged 61 missions. In addition, members contributed 210 person hours of Boating Safety time and 93 person hours to Community Events.

Annual Boating Safety and Community events include, but are not limited to:

- Annual Pleasure Craft Courtesy Checks (PCCC's) for Richmond Yacht clubs and additional assistance to other units who request additional checks;
- Boating Safety presentations to various yacht clubs, Canadian Power and Squadron groups;
- Hosting local scouts and club groups at our facilities and teaching water safety;
- Escort Santa Clause (Steveston arrival by boat);
- Attending Steveston Fisherman's Memorial;
- Escort during the Richmond Yacht Club's Festival of Lights;
- Annual Steveston Salmon Festival Canada Day Parade;
- Safety Vessel for Steveston Tall Ships;
- Safety Vessel for Steveston Dragon Boat Festival; and
- Richmond Maritime Festival.

The current location of the Auxiliary 7 vessel is challenging for many reasons. The location provides no protection from the elements thus equipment is subject to significant wear and tear. The vessel is locked as it is not secured within a boathouse and crew equipment is stored in a nearby trailer thus time to access the equipment and vessel impacts emergency response time

negatively. Cost is also an issue as the Steveston Harbour Authority charges the Station market rent thus donated funds are used for this purpose rather than for equipment and vessel upkeep.

Proposed Location:

Staff worked with members of Station 10 to review potential locations for Auxiliary 7 along the Middle Arm (attachment 3). Based on the location review, Scotch Pond (attachment 4) has been identified as the best available site. Imperial Landing (attachment 5) was the second highest rated location in the review. However, due to the site's lack of existing water and power services, the need to add parking for crew-members in a current pedestrian area and its high-visibility location, it is not recommended.

The proposed location for the Coast Guard Auxiliary's boathouse at Scotch Pond is protected, central and visible. Mooring the boathouse in the Pond will protect it from the worst of the elements and the crew can access the location via Garry Point ensuring quick response time to emergencies.

Currently, the Scotch Pond Heritage Cooperative (SPHC) operates Scotch Pond under a license from the City. Previously, the Coast Guard Auxiliary moored its boathouse in Scotch Pond as a tenant to the SPHC under the auspices of its license from the City. Relations between the two groups were temporarily poor but have now improved and SPHC's executive committee has accepted, in principle, the relocation of the Coast Guard Auxiliary to Scotch Pond (attachment 6). In order to ensure a clearer level of responsibility and accountability it is suggested that the Agreement between the City and the SPIIC be modified to exclude the area to be used by the Coast Guard Auxiliary and that a separate agreement between the City and the Coast Guard Auxiliary be drafted and executed. Given the Coast Guard Auxiliary's ongoing service to the City, its role in community safety and its status as a volunteer, non-profit society, it is recommended that only a nominal fee such as \$1 be collected from the group for its use of Scotch Pond.

The SPCH has expressed the following concerns about re-locating the Coast Guard Auxiliary to Scotch Pond:

- Specific location of the boathouse particularly related to access in and out of the pond for both the Coast Guard Auxiliary boat and the SPHC boats;
- Increase of costs related to electricity and water;
- Potential damage to the float due to the attachment of the boathouse;
- Safety and security protocols related to keys and locks; and
- Communication protocols between the groups and with the City.

These concerns will be collectively addressed in the development of agreement terms. Proposed agreement terms are included in attachment 5.

The following are two outstanding Council referrals related to Scotch Pond:

That staff prepare a detailed report on the status of Scotch Pond, including

the condition of the building, the floats, the pilings, the channel, and the shoreline and provide a copy of the current agreement to determine whether the agreement needs updating. (November 14th 2011)

That a referral be made to staff to discuss with the owners to locate the floating netshed at Scotch Pond with the Sakamoto Boat alongside to be used as a caretaker suite and interpretive centre, with second choice being Britannia Shipyard. (December 19th 2011)

Locating the Coast Guard Auxiliary Boathouse in Scotch Pond will not limit the opportunity for the floating netshed referenced in the December 19th Council referral and any works associated with its installation may contribute to the necessary status review requested in the November 14th referral. It should be noted that any works required to install the boathouse such as driving separate piles for the boathouse will require environmental approvals which may take several months to secure.

Future Opportunities:

Station 10 is planning on embarking on a fundraising campaign to build a new boathouse. Plans for this new Search & Rescue Station would require additional review and Council approval.

Financial Impact

There is no financial impact of approving Scotch Pond as the location for the Canadian Coast Guard Auxiliary – Station 10 boathouse.

Conclusion

The approval of Scotch Pond as the location for the Canadian Coast Guard Auxiliary – Station 10 will provide the group with an improved location for its boathouse and vessel and it will provide the City with an improved maritime rescue function for its residents and visitors.



Serena Lusk
Manager, Parks Programs
(604-233-3344)



Date: 2011/08/08
To: Dave Semple, General Manager, Parks & Recreation
 City of Richmond
From: Brian Hobbs,
 Canadian Coast Guard Auxiliary Pacific Region- Station 10 Richmond
Subject: Steveston Boat House for Auxiliary 7

I Purpose

To work with the City of Richmond to establish a permanent Search and Rescue (SAR) Station in Steveston that would further enhance SAR response and community safety. This station would be established by securing a location for the Auxiliary 7 Boathouse to house the Auxiliary 7 vessel, *Jimmy Ng*.

II Background

The City of Richmond is the base for a volunteer Marine SAR station that started in 1982. Richmond's SAR is a member of the Canadian Coast Guard Auxiliary- Pacific (CCGA-P) and is represented as Station 10 Richmond. Station #10 currently has two vessels that are strategically positioned as per the Joint Rescue Coordination Centre (JRCC), which coordinates all SAR responses by air, land, and sea in BC and the Yukon. Auxiliary 6 is stationed in the Middle Arm of the Fraser River while Auxiliary 7 is stationed in Steveston on the Main Arm of the Fraser River.

The two stations areas of responsibility include, but are not limited to, the Fraser River east to Pitt Meadows and Pitt Lake, north to Vancouver Harbour and Howe Sound, west to the Nanaimo area and the Gulf Islands, and south to Point Roberts. Clearly, this is a huge area, however, the major area of operation is along the Fraser River and the Strait of Georgia immediately west of Richmond as we routinely assist Richmond based boaters and residents as well as many other people experiencing maritime emergencies and a variety of other emergency incidents that involve water rescue or recovery.

A conservative estimate is that volunteer SAR crews based in Richmond have responded to over 1500 missions since we began in 1982.

III Current Status

Station 10 Richmond and its average of forty volunteers contribute in many ways to our local community and take pride in being a community based organization. Already in 2011, Station 10 members have contributed 210 person hours of Boating Safety time and 93 person hours to Community Events

Annual Boating Safety and Community events include, but are not limited to:

- Annual Pleasure Craft Courtesy Checks (PCCC's) for Richmond Yacht clubs and additional assistance to other units who request additional checks;
- Boating Safety presentations to various yacht clubs, Canadian Power and Squadron groups;
- Hosting local scouts and club groups at our facilities and teaching water safety;
- Escort Santa Clause (Steveston arrival by boat);
- Attending Steveston Fisherman's Memorial;
- Escort during the Richmond Yacht Club's Festival of Lights;
- Annual Steveston Salmon Festival Canada Day Parade;
- Safety Vessel for Steveston Tall Ships;
- Safety Vessel for Steveston Dragon Boat Festival; and
- Richmond Maritime Festival.

2010	2011 – To Date	
Training Exercises	62	45
Vessel Hours	141 hrs	97 hrs
Missions	61	27
Vessel Mission Hours	98 hrs	46 hrs
Total Person Hours (Missions)	372 hrs	147 hrs
People Assisted	44	Stats not compiled until year's end
People Saved	4	Stats not compiled until year's end

Our primary vessel is Auxiliary 7 and it responds to the bulk of the incidents. Auxiliary 7 has been located in Steveston since 1982. Currently, Auxiliary 7 is located at the Steveston Harbour Authority's (SHA) Sales Float, not in a boathouse. We currently have one boathouse in storage, inaccessible and unused, because SHA will not permit us to secure our Boathouse inside the Harbour limits. This location does not meet the long-term needs of the Station as it provides no protection from the elements, adding continual wear on the equipment as it is exposed to the elements at all times. As well, the vessel is locked with padlocks while crew equipment is stored in a trailer which is located in a nearby parking lot. Cost is also an issue as the SHA charges the Station for moorage – an expense which is not incurred at other stations along the coast.

This current situation is both expensive and inefficient for Station #10. For example, the maintenance on the vessel has dramatically increased and Station 10 Richmond is required to pay the going commercial rate for moorage which diverts thousands of donated funds that could otherwise be used for equipment and vessel upkeep. Auxiliary 7 is a \$250,000 vessel which, as with all equipment, is paid for through fundraising and community donations. Most importantly, the response times for incidents, including potentially life and death situations, have been increased while the crews retrieve their equipment from a trailer before removing the covers and unlocking the vessel.

Our secondary vessel, Auxiliary 6, located in the Middle Arm is moored on a City water lot and is leased to the Station at a rate of \$1 per year.

IV Proposed Location

Station 10 Richmond requests that the Boathouse be located in Steveston with quick access to a road and parking. An ideal location for the Auxiliary 7 Boathouse would be situated at the proposed City of Richmond floats to be located south of Bayview St, between No 1 Rd and Britannia Heritage Shipyards. In this location, members will provide a daily presence on the dock and could potentially assist with City programming at the location.

V Rent

Station 10 Richmond requests that in lieu of substantive rent it continues to work with its partners to promote safe boating in the community of Richmond. In addition, the Station will work with local Community Associations to ensure local boaters have access to a Pleasure Craft Operator Card, as now required by law. As all of Station 10 Richmond finances are raised through fundraising, any moorage fees directly impact our ability to acquire and maintain equipment essential to Marine Search and Rescue.

VI Conclusion

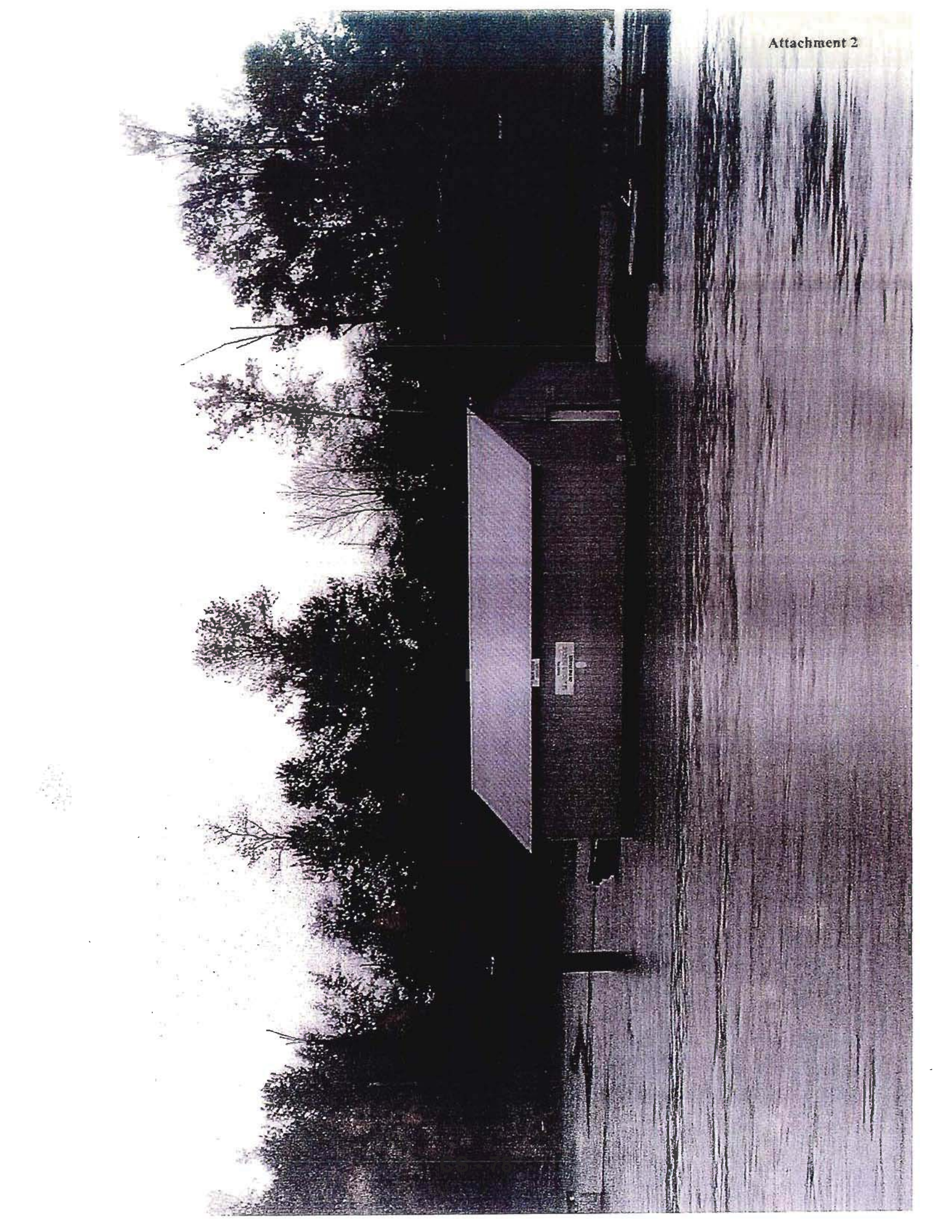
Similar to any emergency service, the safe, practical and secure storage of equipment is important and can significantly reduce response times when minutes actually can make a difference. Station 10 Richmond, like all volunteer SAR services across Canada, fulfils a vital and lifesaving role in our nations Search and Rescue capabilities.

Station 10 Richmond appreciates the support and leadership provided by the City of Richmond throughout its existence. We look forward to continuing to contribute to a safer community by working with all of our partners, including the City of Richmond, Richmond RCMP, Richmond Fire Rescue, BC Ambulance, and the Canadian Coast Guard.

To ensure that Station 10 can contribute as effectively as possible, we look forward to establishing a secure SAR Station in Steveston by finding a home for our Boathouse and our vessel, the *Jimmy Ng*.

Respectfully submitted,

Brian Hobbs





Proposed Auxiliary Boatpouse location 40'-0" x 20'-0"

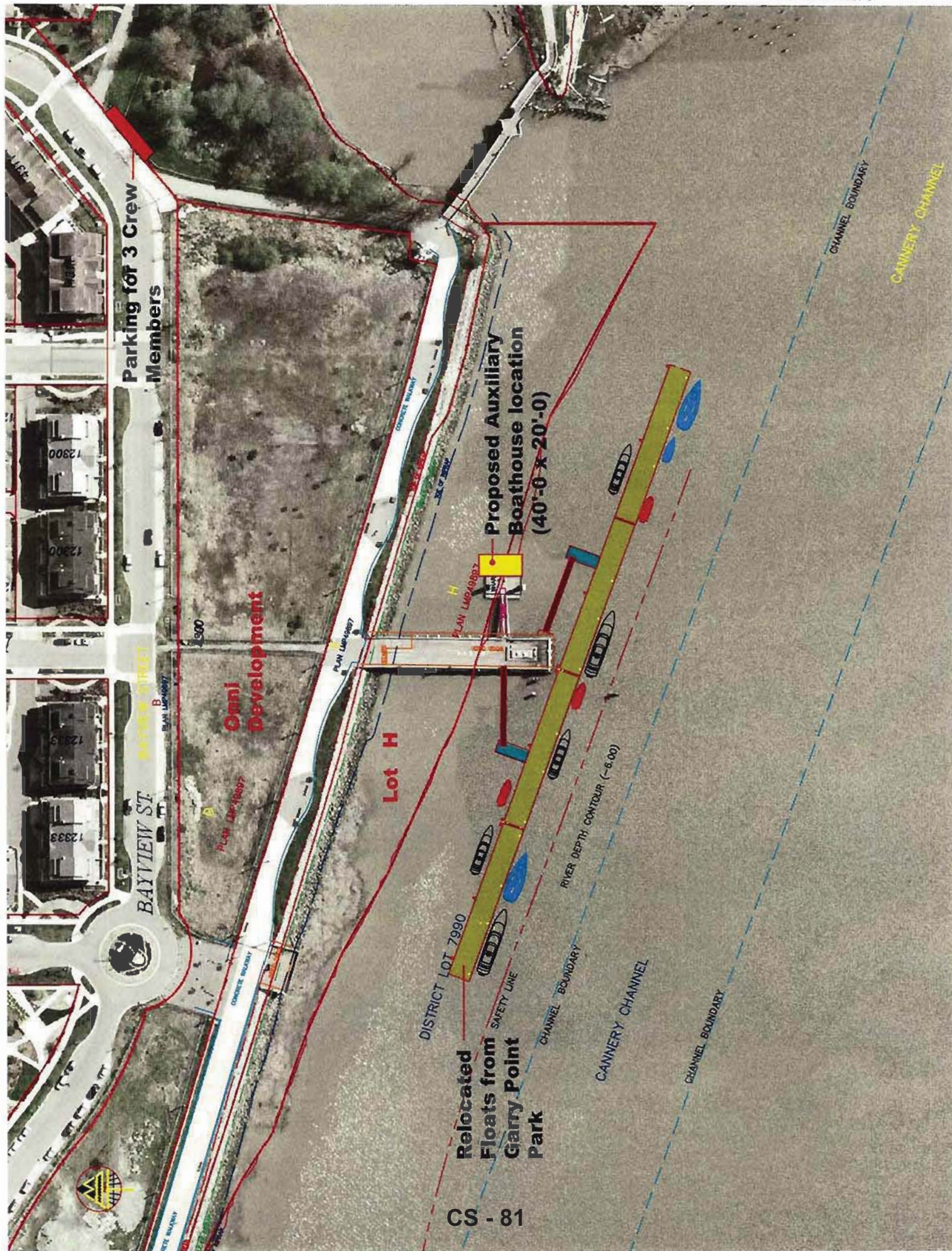
Parking

Scotch Pond

Garry Point Park



CS - 80



February 9, 2012

Mr Dave Semple,
General Manager
Parks and Recreation
City of Richmond

At the regular quarterly meeting of the board of the Scotch Pond Heritage Cooperative, the Directors accepted, in principle, the request by the City of Richmond to relocate the Coast Guard Auxiliary unit to Scotch Pond, subject to working out in an agreement, details, costs, and other concerns.

Future meetings to work out the details and subject to approval of the members of the Cooperative, at its Annual General Meeting to be held on March 15, 2012.

Respectfully,
Peter Beritic

Peter Beritic
President
Scotch Pond Heritage Cooperative

Proposed Agreement Terms between City of Richmond and Canadian Coast Guard Auxiliary –
Station 10

Term	3 years with an option for a 3-year renewal.
Commencement Date:	To be determined, but before May 1 st 2012
Licensee	Canadian Coast Guard Auxiliary – Station 10
Permitted Use	The licensee is permitted to moor its boathouse at the site for the purposes of storing a vessel, operating search & rescue training and performing search and rescue missions.
Standard of Behaviour	The licensee is expected to act in manner consistent with that of those in the public eye. No unruly behaviour is permitted.
Reporting	A monthly incident report must be submitted to the City's Community Safety Division.
Liaison	A written quarterly update and meeting is required with the City.
Policies	All City policies apply to the operation of the Boathouse.
Insurance	\$5 million general liability listing the City of Richmond and its employees and the Scotch Pond Heritage Cooperative as an additional insured is required to be provided by the licensee.
Services	Water and electrical services will be on a metered system.
Access	Access to the site is over floats licensed to another party. Access will not be withheld provided identified security measures are followed.
Parking	Parking is permitted in a nearby designated location.
Waste	Waste, recycling and composting is the cost and responsibility of the licensee.
Termination	Either party may, without cause, terminate this agreement on 30 days' notice
Representation	The licensee must not act as the City's representative in any matter and particularly with the media
Partnership	No partnership is implied.
Recognition	The City must be recognized as a supporter in all marketing materials and communications related to the Canadian Coast Guard Auxiliary – Station 10.