



**Road Closure and Removal of Road Dedication
(Corner of Moncton Street and No. 1 Road) Bylaw**

The Council of the City of Richmond enacts as follows:

1. The lands shown cross-hatched on the Reference Plan prepared by Matson Peck & Topliss, BCLS attached as Schedule A shall be stopped up and closed to traffic, cease to be a public road and the road dedication shall be removed.
2. The lands shall be consolidated with the adjoining lands at 3900 Moncton Street, Richmond.
3. This Bylaw is cited as **“Road Closure And Removal of Road Dedication Bylaw 8392”**.

FIRST READING

JUL 14 2008

SECOND READING

JUL 14 2008

THIRD READING

JUL 14 2008

DULY ADVERTISED ON

AUG 23 2008 AUG 30 2008

ADOPTED

CITY OF RICHMOND
APPROVED for content by originating dept.
APPROVED for legality by Solicitor

MAYOR

CORPORATE OFFICER

Schedule A to Accompany Bylaw 8392

REFERENCE PLAN TO ACCOMPANY THE CITY OF RICHMOND
ROAD CLOSING AND REMOVAL OF ROAD DEDICATION
BYLAW NO. _____ OF A PORTION OF ROAD DEDICATED
BY PLAN BCP36186 SECTION 10 BLOCK 3 NORTH
RANGE 7 WEST NEW WESTMINSTER DISTRICT

BCGS 92G.015
PURSUANT TO SECTION 120 LAND TITLE ACT AND
SECTION 40, COMMUNITY CHARTER

PLAN BCP

REF. No. _____

DEPOSITED IN THE LAND TITLE OFFICE
AT NEW WESTMINSTER, B.C.
THIS DAY OF _____ 20__

REGISTRAR



OFFICER SIGNATURE(S)

SIGNATURE

(PRINT NAME)

COMMISSIONER FOR
TAKING AFFIDAVITS FOR B.C.
CITY OF RICHMOND
6911 NO. 3 ROAD
RICHMOND, B.C. V6Y 2C1
276-4000
AS TO THE SIGNATURE OF
DAVID WEBER

EXECUTION DATE

Y	M	D

PARTY(IES) SIGNATURE(S)
CITY OF RICHMOND
BY ITS AUTHORIZED SIGNATORY

MALCOLM O. BROOKE
MAYOR, AUTHORIZED SIGNATORY

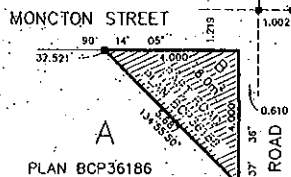
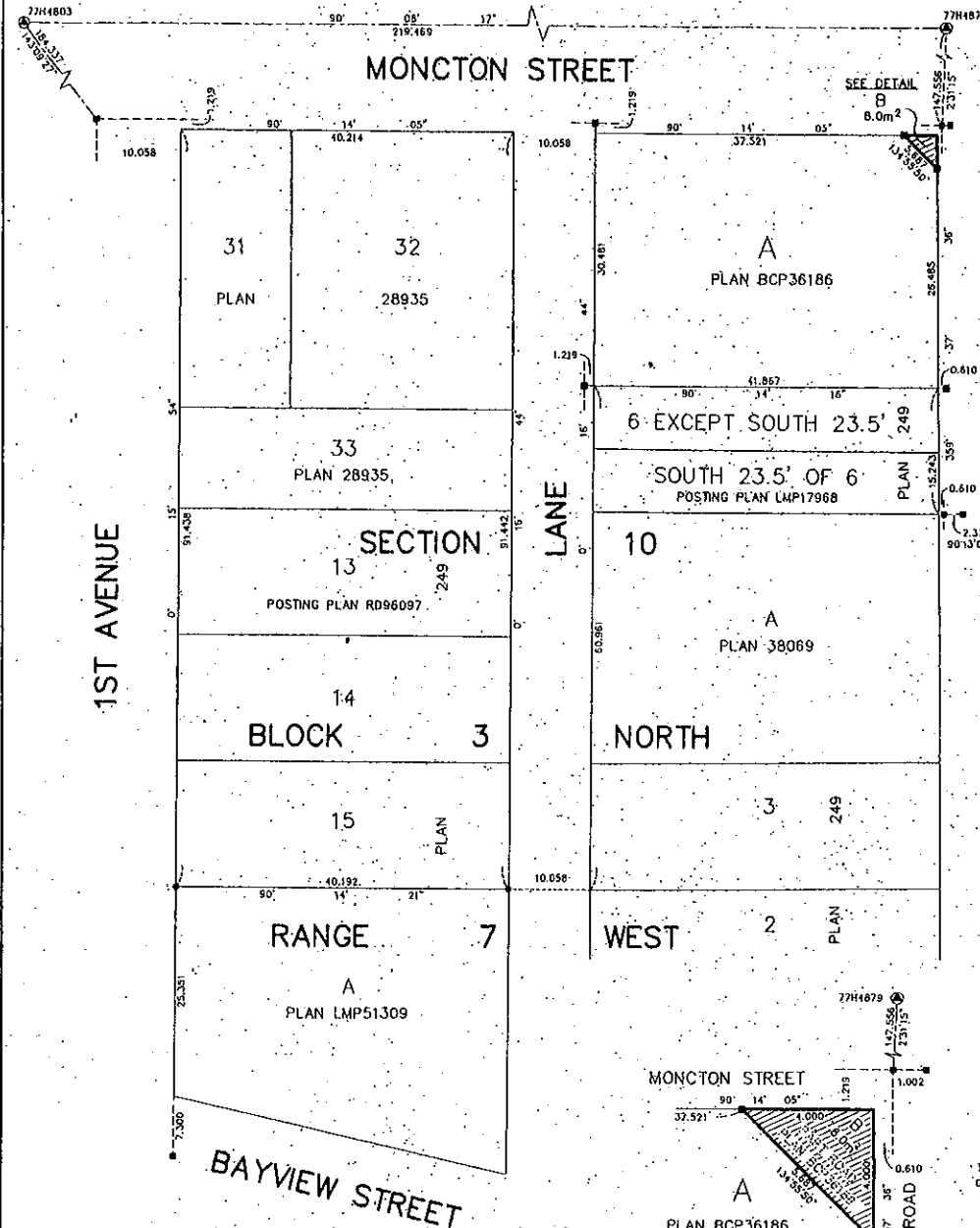
DAVID WEBER
CORPORATE OFFICER, AUTHORIZED SIGNATORY

THIS PLAN LIES WITHIN THE
GREATER VANCOUVER REGIONAL DISTRICT

I, WILLIAM P. WONG, A BRITISH COLUMBIA LAND SURVEYOR, OF
THE CITY OF BURNABY, IN BRITISH COLUMBIA, CERTIFY THAT I
WAS PRESENT AT AND PERSONALLY SUPERINTENDED THE SURVEY
REPRESENTED BY THIS PLAN, AND THAT THE SURVEY AND PLAN
ARE CORRECT. THE SURVEY WAS COMPLETED ON
THE 11TH DAY OF JUNE, 2008.

THE PLAN WAS COMPLETED AND CHECKED, AND THE
CHECKLIST FILED UNDER # 82424 DM
ON THE 11TH DAY OF JUNE, 2008.

B.C.L.S. (#697)



DETAIL
NOT TO SCALE

LEGEND

SCALE 1:400

- INDICATES CONTROL MONUMENT FOUND
- INDICATES STANDARD IRON POST FOUND
- INDICATES LEAD PLUG FOUND
- ▨ INDICATES PORTION OF ROAD TO BE CLOSED

THIS PLAN SHOWS GROUND LEVEL MEASURED DISTANCES.
PRIOR TO COMPUTATION OF U.T.M. COORDINATES, MULTIPLY
BY COMBINED SCALE FACTOR 0.9998950.

MATSON PECK & TOPLISS,
SURVEYORS & ENGINEERS
#210 - 8171 COOK ROAD
RICHMOND, B.C.
V6Y 3T8
PH: 604-270-9331
FAX: 604-270-4137
CADFILE: 15164-RC.DWG

GRID BEARINGS ARE DERIVED FROM OBSERVATIONS BETWEEN CONTROL MONUMENTS
77H4803 AND 77H4879, NAD83 (CSRS) INTEGRATED SURVEY AREA NO. 18, RICHMOND