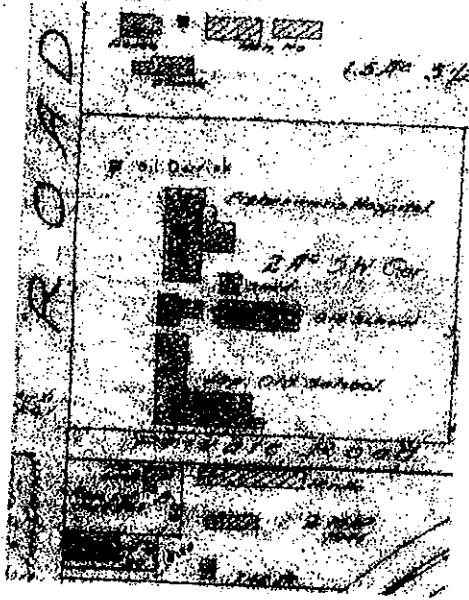


Please note:

This is our petition package being circulated to gain the support of relocating the most significant heritage building left in Steveston to the Museum/Post Office site.

Even those who initially opposed the relocation to the Museum site, supported us without any hesitation upon learning the history of this building. This, we believe, was one of the reasons the public gave us overwhelming support at the Public Open House on December 13, 2008.

Steveston Japanese Fishermen's Hospital Complex Preservation Project

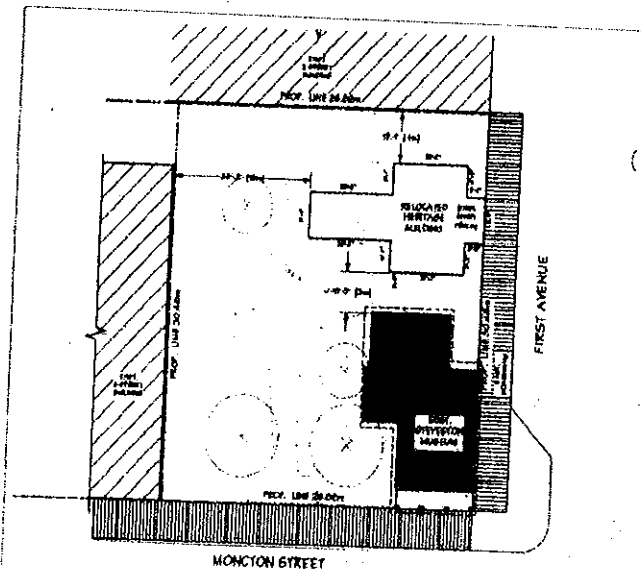


The 1944 Richmond Public Works map shows the Doctors / Administration Office as a T-shaped building between the hospital and school.

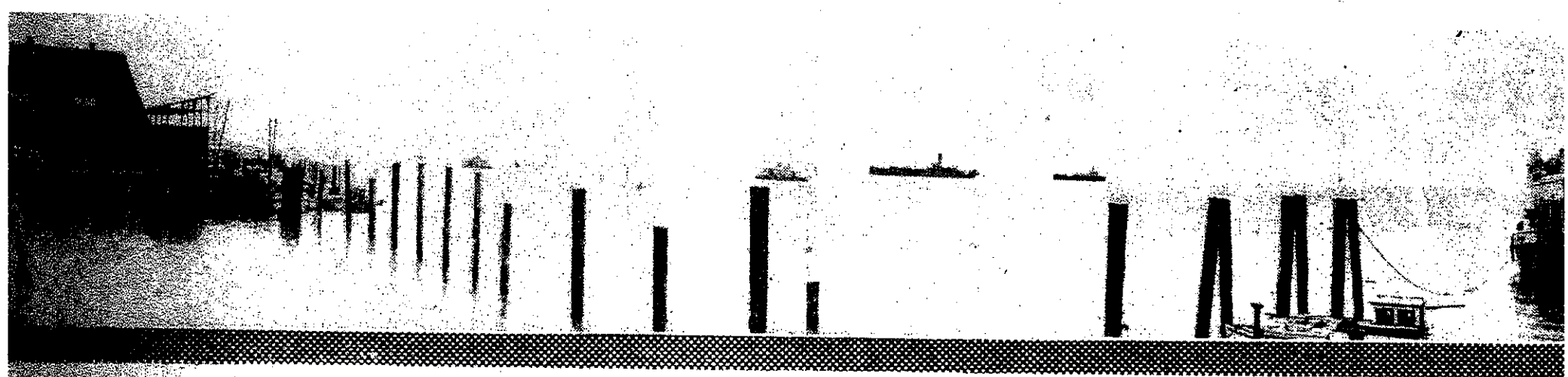
- Building was part of Japanese Hospital and Japanese Language School
- Steveston Japanese Fishermen's Benevolent Society operated complex from 1900 to 1942
- First hospital in Richmond and birthplace of first socialized Medicare System in Canada
- Citizens of Richmond, regardless of race were offered free health care and treated during the outbreak of Typhoid epidemics
- First Kindergarten in Richmond was also started from this complex
- History of the Steveston Japanese Fishermen's Benevolent Society and its contributions to the fishing industry and coastal communities of BC can be preserved
- Building was moved to current site at 4091 Chatham St and converted into a private home
- Relocation to the Museum Site is the only site in Steveston to give recognition to the valiant efforts of our pioneering citizens who built a vibrant community we so proudly claim today

- ANAF donated building as well as agreed to provide \$50,000 towards relocation costs and janitorial services when completed
- City of Richmond Planning Department as well as the Richmond Heritage Commission supported the relocation to the Steveston Museum / Post Office Site, 3811 Moncton St
- Townline Construction Group has offered the concrete foundation for the building estimated at \$40,000
- Richmond Parks Department has provided a cost estimate towards the relocation, restoration and display costs which identifies areas of responsibility of other stakeholders (ie: City, ANAF, Townline, Japanese Heritage Enthusiast Group)
- Relocation will enhance a unique dimension to the historical Steveston Museum / Post Office
- Project will add to the educational aspect by telling the story of early Japanese Canadian Fishermen and their families
- Initial response from City Councilors was 6:2 in favour of plan to relocate to the Museum Site
- Since it was part of the Hospital Complex, it could serve as Steveston Outreach Clinic for influenza vaccinations, baby clinics, prenatal classes and medical information centre

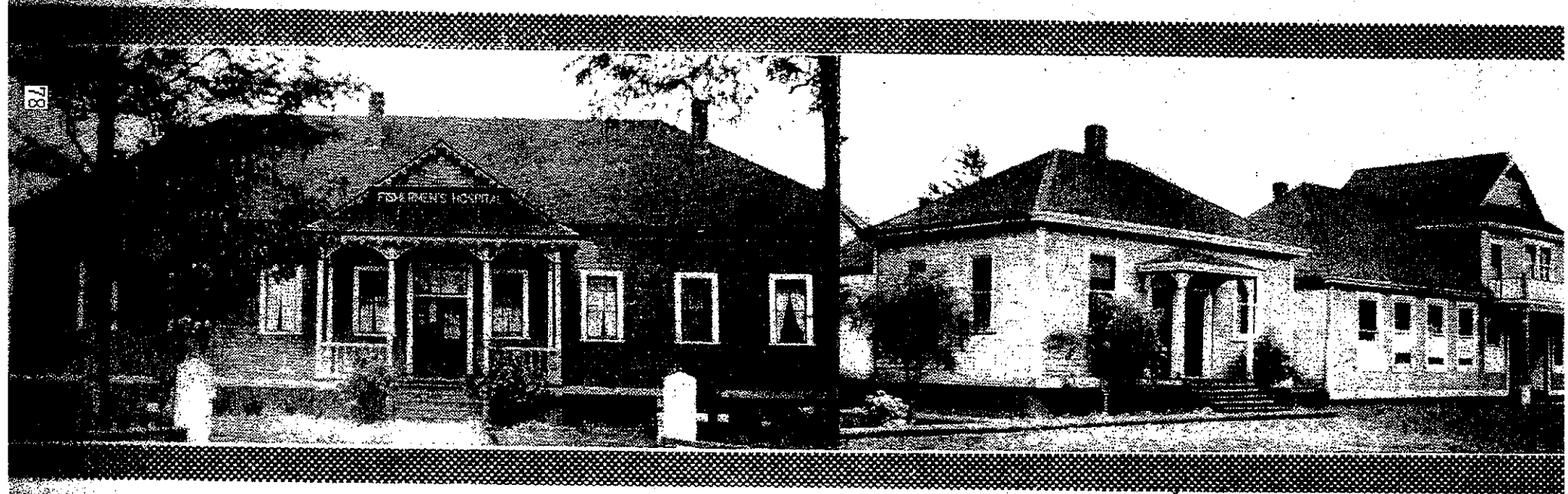
CONCEPTUAL SITE LAYOUT
4091 CHATHAM STREET BUILDING RELOCATED TO 3811 MONCTON STREET
(The actual siting of the building will be determined by Council later.)



Proposed location of Doctors / Administration Office will add a new dimension to the existing Steveston Museum / Post Office in the historic town centre while maintaining existing large trees and open space within the park.



口々河ーザレフたい導に日今をントスヴテス



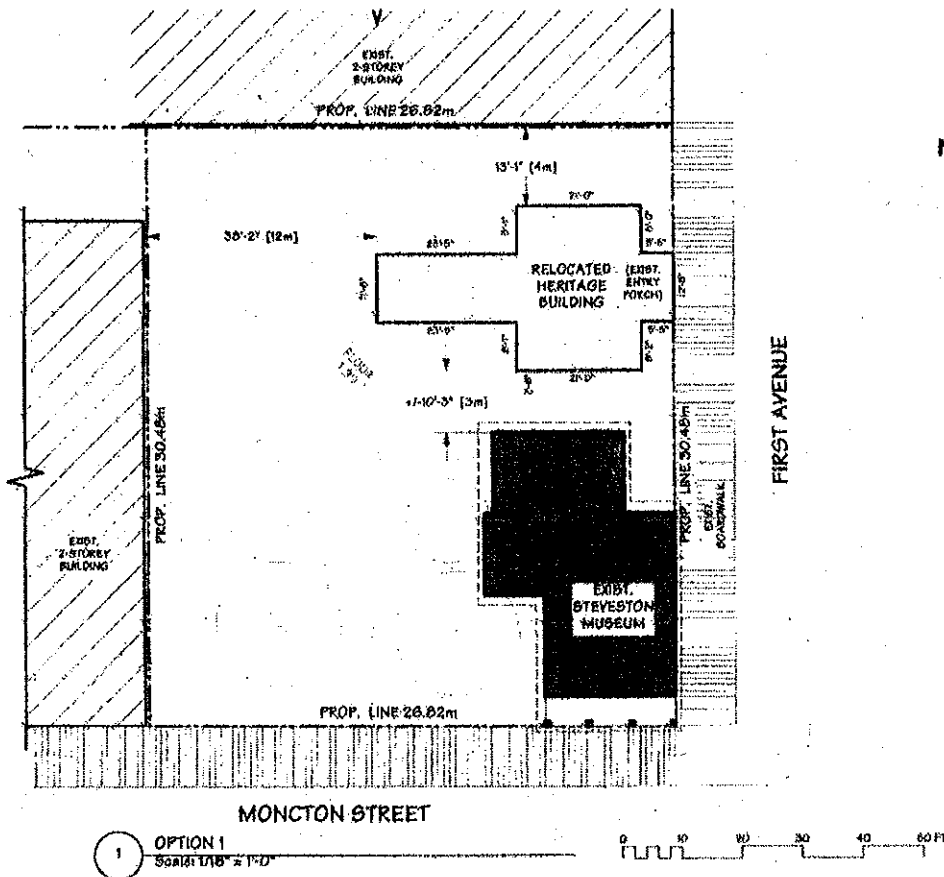
物建屬附體團者漁る語を年五十三

ルーホ、所務事、院病りよ左

↑ THIS IS THE BUILDING
WE ARE IN A PROCESS
OF RELOCATING TO THE
MUSEUM SITE (C 1900)



Proposed Location of the 4091 Chatham Street Heritage Building at 3811 Moncton Street



For City Information Contact:
 Terry Brunette, Planner, City of Richmond at 604-276-4279
 or email tbrunette@richmond.ca

Authorized By:
 Richmond Planning Committee
 October 7, 2008

PROPOSAL:

It is proposed to move the Fishermen's Hospital Office and Nurse's Residence to the Steveston Museum site facing First Avenue.

STEVESTON MUSEUM

Richmond Council approved the purchase of the Royal Bank building, originally the Northern Crown Bank, on October 24, 1977 for \$44,000.

The proposed uses for the site were outlined in an accompanying report from the Steveston Historical Society, were endorsed by the Steveston Community Society, and were originally initiated by the Federally and Provincially sponsored Neighbourhood Improvement Programme.

An additional structure or building to the rear of the Steveston Museum was anticipated from the very beginning to increase the display space area of the museum.

"Museum:

It is proposed that this building be preserved on its present site as an historic structure of Steveston and re-used as a Richmond Museum. In the short term there is ample room. In the long term, as museum collections increase an addition could be constructed to the rear of the bank. This museum could then become a place for special collections of Richmond's history (i.e. Steveston's past or fishing industry) and become one of several important historic sites in Richmond."

"Post Office:

The museum would be a good location for the post office and a post office/museum similar to Barkerville could be developed. If the Post Office Department was approached there is a good chance that they would permit the use of the Steveston Postmark on outgoing mail. The original post office was established in 1877-78, and the return of the postmark would be a fitting gesture. The availability of the post office concession would assure a permanent person and partial financing of the operation."

"Town Square:

A further recommendation to this proposal is the purchase of the building site adjacent to the old bank on the west side. The front portion of this lot would be incorporated as a town square and as a focus along with the historic bank building. The rear half would be used for the future expansion of the museum. This town square development, along with the museum-post office, would begin to improve and maintain the quality of Steveston, especially Moncton Street."

"Steveston Historical Project - Oct. 24, 1977"

RECOMMENDATION:

As envisioned in 1977, a second building on the Steveston Museum site would add to the viability of the present museum, especially if the revenue from the Post Office is reduced or curtailed due to the establishment of a second post office in Steveston. The Steveston Museum site is an appropriate location for the Japanese Fishermen's Benevolent Society building.

日系人の歴史的建物の移転保存場所に対する署名のお願い

今より百数年前、日系人の歴史的建物である病院、学校、事務所、ホールが、ステーブストン漁者慈善団体によって建造されました。

其の中で現在残っている建物は、事務所だけになりましたが、今回その歴史的なる事務所の移転場所について、リッチモンド市議会で検討されましたが、それらは日系人のみならず、当時他のリッチモンド市民達にとっても重要な役を果たしましたので、最適なる移転場所を望みましたが、それをリッチモンド市議会で理解してもらう事が出来ませんでした。

今度、新しく選出されたリッチモンド市会議員に依っての、市議会の席に於いて、その重要性を説明する際に、この歴史的なる建物が最適なる場所に移転出来るように、皆様方の署名が必要です。

この歴史的なる建物が最適なる場所として、モンクトンにあるポストオフィスの裏に当たる場所に移転が出来ますように、各方々に署名をお願いしたく、ご協力お願い致します。

日系漁者子孫会（仮名） 田中、菅野。

Steveston Japanese Fishermen's Hospital Complex Preservation Project

A group of keen Steveston heritage enthusiasts, who are the descendants of pioneering Japanese Fishermen have garnered community and financial support to relocate and restore the Doctors'/Administration Office, which was part of the original hospital complex. This historic building was built by the Steveston Japanese Fishermen's Benevolent Society, circa 1900.

The undersigned support the preservation of this, the most historical heritage building remaining in the Steveston/Richmond area. Its relocation to the Steveston Museum Site, will be with minimal environmental disruption leaving substantial open and green space on the site intact.

Name	Address

Steveston Japanese Fishermen's Hospital Complex Preservation Project

Name	Address

Please note:

These are the petition forms circulated by the citizens making a convincing case against the relocation of the most significant heritage building left in Steveston to the Museum/Post Office site.

The wording is very misleading to the public that many people signed without knowing the history of this heritage building in question.

CONSULATE GENERAL OF JAPAN

800 - 1177 WEST HASTINGS STREET
VANCOUVER, B.C., CANADA V6E 2K9
TEL: 604-684-5868 FAX: 604-684-6939

December 10, 2008

To Whom It May Concern:

I am writing in strong support of the Steveston Japanese Fishermen's Hospital Complex Preservation Project.

Recently I became aware of this project and its aim to conserve an important building and ensure that the contribution and historical legacy of the early Japanese settlers to Steveston and the City of Richmond is not lost.

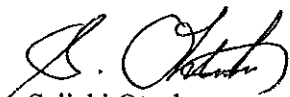
It is very interesting to note that, as part of the Japanese Hospital and Japanese Language School complex, the Doctor's/Administration Office was not only the first hospital in Richmond, but as a medical care facility, was dispensing free medical care to all comers regardless of race during the outbreak of typhoid epidemics. It seems that Canada's renowned system of socialized medicine was practiced right here in Richmond by the Steveston Japanese Fishermen's Benevolent Society long before it became nationalized.

The preservation of such a building has immense value both to the community and the wider public. As a historic site, it educates all about the past and the early formation of Steveston and its presence is a visual reminder of the values commonly cherished by the community then and now.

Although there are dissenting voices with a petition against relocation to the museum site, after having visited the museum site, the building and the property in November I believe that it is possible to harmonize the existing park and the rich heritage of this building in a way that honours the constructive efforts of the pioneers and gives respect to the environment.

Considering the great legacy of this building and the large community support that already exists, it is my earnest hope that all parties and individuals with a sincere interest in the betterment of the community will cooperatively relocate this most historically significant building left in Steveston to the museum site to honour the past and build for the future through the preservation of this landmark building.

Sincerely,



Seiichi Otsuka,
Consul General



National Association of Japanese Canadians

December 31/ 2008

Dr. Jim Tanaka
Japanese Heritage Enthusiast Group
7571 Montana Road
Richmond, B. C. V7C 2K7

Re: Steveston Japanese Fishermen's Hospital Complex Preservation Project

Dear Dr. Tanaka:

We are pleased to send you our letter of support, regarding your group's plans to have the Steveston Japanese Fisherman's Hospital Complex, moved to the Steveston Museum. We applaud your tireless efforts in having this project reach completion.

We thank you for bringing this project to our attention. As one of the aims and objectives of the NAJC, that is, "to promote and encourage Japanese Canadians to work together on matters of concern to all Canadians and undertake collective action for a better Canada and a world free from racism, poverty inequality and war", we feel that your project will achieve many purposes in creating greater understanding and awareness of the Japanese Canadian history, but also of the larger Canadian history. As you have stated, "this heritage building is the most historically significant building left in Steveston which has a rich historical association not only with the Japanese fishermen and their families but also with the larger community of Steveston/Richmond". And for this reason, the museum site is the most appropriate choice for its relocation. We further support the relocation of this heritage building to the Steveston Museum site for security reasons as well.

While we understand that the Steveston Museum Society and the Steveston Historical Society wished to have their voices heard on this project, we feel confident in the decisions made initially by the City of Richmond, Planning and Development Department, as well as the Richmond Heritage Commission, who both supported the relocation of the Heritage building to the Museum site.

We wish you much success in the completion of this project as you have envisioned it. We are most interested in the progress of this project and hope that you will keep us apprised.

Sincerely,

Terumi Kuwada,
President, NAJC



B. C. 州 和 歌 山 県 人 会
B.C. WAKAYAMA KENJIN KAI

To Mayor Malcolm Brodie and the Councillors of the City of Richmond:

Re: Steveston Japanese Fishermen's Hospital Complex Preservation Project

The heritage building in question, the Doctors/Administration Office, was a part of the Japanese Hospital and Japanese Language School (the Hospital Complex). This Complex was built and operated by the Steveston Japanese Fishermen's Benevolent Society from c. 1900 to 1942, when Japanese Canadians were forcibly removed from the West Coast. In the years following the War, much of the Japanese Canadian history and the familiar landmarks were already lost or destroyed in Steveston, including the rich heritage of the Hospital and School. The Doctors/Administration Office building was moved to the current site and converted into a private home.

This Complex was the first hospital in Richmond and can be said as the birthplace of the first socialized "Medicare" system in Canada. The citizens of Richmond were treated here during the outbreak of typhoid fever epidemics. They were offered free health care regardless of race. People of European, Chinese and Japanese ancestries were born in this hospital from 1900 to 1942. The first kindergarten in Richmond was also started from this Complex.

The relocation to the Museum site not only achieves the preservation but will enhance and add to the historical attraction to the existing Museum. It will also add to the educational aspect which would tell the stories of the early Japanese fishermen and their families, as well as the contributions the Japanese Fishermen's Benevolent Society made to the community.

On behalf of the Board of Directors and the 500 plus members of the B.C. Wakayama Kenjin Kai, I respectfully request your support of relocating this heritage building to the Museum/Post Office site. This site is the most appropriate choice for its relocation, for security reasons, as well as, it will be located within the core of the proposed Steveston Village Heritage Conservation District.

Sincerely,

Eizo Hayashi
President, B.C. Wakayama Kenjin Kai



Greater Vancouver Japanese Canadian Citizens Association (JCCA)

#200-6688 Southoaks Crescent
Burnaby BC
V5E 4M7
December 12, 2008

City of Richmond
6911 No 3 Road
Richmond BC V6Y 2C1

Attention: Terry Brunette, Planner, Policy Planning Division

Dear Terry Brunette,

On behalf of the Board of Directors and our 1467 members of the Greater Vancouver Japanese Canadian Citizens' Association, we are in support of the Japanese Heritage Enthusiast Groups efforts on the preservation and relocation of the Doctors'/Administration Office to the Steveston Museum/Post Office site. This site is located at 3811 Moncton Street in Steveston, City of Richmond. Currently the Doctors'/Administration Office is at 4091 Chatham Street in Steveston, City of Richmond.

The building itself was a part of the Japanese Hospital and Japanese Language School and operated by the Steveston Japanese Fishermen's Benevolent Society from 1900 to 1942, when the Japanese Canadians were forcibly removed from their homes and property from the West Coast.

The hospital was the first in Richmond and can be said as the birthplace of the first socialized Medicare system in Canada. The citizens of Richmond were treated here during the outbreak of the typhoid fever epidemics. It is important to note that treatment during this time was provided free of charge to all regardless of race or affiliation. In fact many people of European, Chinese, and Japanese descent were born in the hospital.

The proposed new site at the Steveston Museum/Post Office will enhance and add a whole new dimension to the historical aspect of the building. Along with that there will definitely be an added educational aspect which would tell the stories of the early Japanese fishermen and their families.

With the growth and the development of the City of Richmond, much of the Japanese Canadian history has been lost in Steveston. Many Japanese Canadian organizations and their members believe that this heritage building would provide important aspects of the larger community in areas of heritage, interculturalism, education, legacy, and history.

The Greater Vancouver Japanese Canadian Citizens' Association hopes that the final outcome and acceptance brings a keen sense of cooperation and good relations for all in the City of Richmond.

Ron Nishimura
President, Greater Vancouver Japanese Canadian Citizens' Association



CALGARY
JAPANESE
COMMUNITY
ASSOCIATION

Calgary Japanese Community Association
2236 – 29 Street SW
Calgary, AB T3E 2K2
12th December 2008

Dr. Jim Tanaka
Japanese Heritage Enthusiast Group
7571 Montana Road
Richmond, BC V7C 2K7

Dear Dr. Tanaka,

Re: Steveston Japanese Fishermen's Hospital Complex Preservation Project

To Mayor Malcolm Brodie and the Councillors of the City of Richmond, BC:

Following the devastating period of upheaval and forced removal of Japanese Canadians from the West Coast, and the dispossession of our properties, much of the familiar landmarks were destroyed or permanently altered. The building in question somehow miraculously survived this destruction. In its former life it housed a part of the Japanese Hospital complex and was the first hospital in Richmond, with a long, proud history dating back to ca. 1900, right up to the time of the forced removal in 1942. The hospital was operated successfully by the Steveston Japanese Fishermen's Benevolent Society.

Many local citizens were treated in this hospital during the outbreak of typhoid fever epidemics. It holds many other significant memories such as offering of free health care regardless of race, wherein babies of various backgrounds, Caucasians, Chinese, and Japanese, were born. Thus it is much more than bricks and mortars to Japanese Canadians; it provides a rare glimpse of our history, one tiny enclave that we can cling on to, and one rare site that we can proudly relate to, and show to our children and their children. Having personally experienced the forced diaspora and the devastation imposed on the Japanese Canadian people, I know first hand the historic importance and significance of preserving this building. Thus I, on behalf of the Board of Directors and the 500 members of the Calgary Japanese Community Association, respectfully request that we be spared of yet another tragic loss of a piece of our history and be allowed to retain this one small memory. Your approval of relocating the building to the Steveston Museum/Post Office site, within the core of Steveston Village Conservation District, will assure of preservation of a building that we hold so dear.

Sincerely yours,

A handwritten signature in black ink that reads "Tom Uyeno". The signature is written in a cursive style with a large, prominent "T" and "U".

Tom Uyeno, PhD
President, Calgary Japanese Community Association

Total = 1772

Steveston Japanese Fishermen's Hospital Complex Preservation Project

A group of keen Steveston heritage enthusiasts, who are the descendants of pioneering Japanese Fishermen have garnered community and financial support to relocate and restore the Doctors' Administration Office, which was part of the original hospital complex. This historic building was built by the Steveston Japanese Fishermen's Benevolent Society, circa 1900.

The undersigned support the preservation of this, the most historical heritage building remaining in the Steveston/Richmond area. Its relocation to the Steveston Museum Site, will be with minimal environmental disruption leaving substantial open and green space on the site intact.

Name	Address
SEIKO MIYAGI	#45-2533 HEATHCOTE ST. RICHMOND B.C. V6X 2P8
SHINJI ASATO	#112-8291 PARK RD RICHMOND B.C. V6Y 1T3
SEIZO SHIMIZU	3204 PRINCE EDWARD ST VAN. V5Y-3R5
KUMIKO NAKAMOTO	2911 HAVERMAN RD ABBOTSFORD V4X 2P2
Naoko Izaki	23038 Fraser Hwy Langley BC V2Z 2V1
Yasuo Izaki	23038 Fraser Hwy Langley BC V2Z 2V1
K. Nakamoto	2931 HAVERMAN RD ABBOTSFORD V4X 2P2
Shawn Nakamoto	24311 HAVERMAN RD Abbotsford V4X 2P2
Tan Okuma	1071 WEST 44TH AVE. VANCOUVER BC V6M 2L3
Ryuji Asada	#1206-8120 Bennett Rd Rmd. BC V6Y 1N5
Hiroko Asada	#1206-8120 Bennett Rd. Rmd. BC V6Y 1N5
Yoko Nakaoji	#1206-8120 Bennett Rd. Rmd. BC V6Y 1N5

Steveston Japanese Fishermen's Hospital Complex Preservation Project

Name	Address
RUTH HOLETT	#3-11860 RIVER ROAD SURREY B.C. V8V 2V7
ZACHARY HOLETT	#3-11860 RIVER ROAD SURREY B.C. V8V 2V7
MITSUGU KAKAZU	15076-98 AVE, SURREY BC, V3R 5W8
TATSURO UEHARA	3204 Prince Edward Street Vancouver, B.C. V5R 5X5
AKIKO KAKAZU	15076-98 AVE, SURREY BC, V3R 5W8
SEIJI KAKAZU	7782 ELWELL STREET BURNABY B.C. V5H 1M7
HIROYUKI IZAMI	1821 BURNHAM AVE COQUITAMA B.C. V3J 4E1
SAM KAYO	#20-2488 LITTLE RIVER RD V60 BC V3C 1R9
KAZ NISHIKO	5676 IRVING ST. BURNABY B.C. V5H 1V6
AKIHITO YAGI	1850 LINCOLN AVE POCO V3B-2J8
CHIHIRO TSENG	8356-143A ST Surrey
FU TSENG	8356-143A ST. SURREY.
ROGER MAJUH	2507 E. KENT AVE. VANCOUVER.
NADAM TSENG	" "
KATSUKO ISHIKAWA	5800 POWER CRT. RMD. BC. V7E 4K2
HIROSUKE TSUJIMOTO	5745 LAUREL ST. BURNABY B.C.
HIROYUKI TSUJIMOTO	" "
MAKIKO SHANJO	" "
Kaya Chang	Nishihara, Okinawa Japan

93

(12)

(19)

Steveston Japanese Fishermen's Hospital Complex Preservation Project

A group of keen Steveston heritage enthusiasts, who are the descendants of pioneering Japanese Fishermen, have garnered community and financial support to relocate and restore the Doctors/Administration Office, which was part of the original hospital complex. This historic building was built by the Steveston Japanese Fishermen's Benevolent Society, circa 1900.

The undersigned support the preservation of this, the most historical heritage building remaining in the Steveston/Richmond area. Its relocation to the Steveston Museum Site, will be with minimal environmental disruption leaving substantial open and green space on the site intact.

Name	Address
Don MARUYAMA	3790 HUNT ST RICH
CEO. KOFUNAGI	4360 PENDLEBURY RD RICH.
KAZUO KONDO	8111 McBURNEY CRT RICHMOND.
Hiroko Yoshihara	10891 Roscroft Cres. Rich.
Larry Ryan	5733 Grove Ave Delta
MITSU SAKAI	19-4111 GARRY ST. RMD
KEIKO SAKAI	19-4111 GARRY ST. RMD
JACK KAWABATA	3860 HUNT ST RMD.
YOSH KAWABATA	" " "
VICTOR KAWABATA	" " "
MITSU YO. KAWABATA	" " "
SAM KONDO	8111 McBurney Crt Rmd
PAUL KURIYAMA	5231 HONETON ST.
JEANNI RYAN	5888 GROVE AVE DELTA

Steveston Japanese Fishermen's Hospital Complex Preservation Project

Name	Address
RUTH ILG	5200 MYTKO CR RMD
HENRY ILG	" "
Nancy Hamanishi	6409 Dunfries ST VAN
MORIO ISHIKAWA	1835 ISLAND AVE VAN
Sumiko Isakawa	" "
KUNJI KURAMOTO	11871 PINTAIL DR RICH
Mamoru Madokoro	3317 VENABLES VAN
PEGGY MADOKORO	" "
YOSHIYASU NAKATA	#403-8100 JONES RD RICH.
NOBUKO NAKATA	" "
AYAKO NIITTA	3620 GEORGIA ST. RICH.
MARY OKABE	3791 BROADWAY ST RICH.
KIMIKO OSHIRO	11042 4TH AVE RICH.
HANAKO OYE	3160 HUNT ST. RICH
MITSU SAKAI	19-4111 GARRY ST RICH.
ROSS SAKAI	3660 PLEASANT ST RICH.
CARMEN SAKAI	" "
TRACEY SAKAI	" "
MERI SAKATA	11831 N 1 RD RICH.

Steveston Japanese Fishermen's Hospital Complex Preservation Project

A group of keen Steveston heritage enthusiasts, who are the descendants of pioneering Japanese Fishermen have garnered community and financial support to relocate and restore the Doctors' Administration Office, which was part of the original hospital complex. This historic building was built by the Steveston Japanese Fishermen's Benevolent Society, circa 1900.

The undersigned support the preservation of this, the most historical heritage building remaining in the Steveston/Richmond area. Its relocation to the Steveston Museum Site, will be with minimal environmental disruption leaving substantial open and green space on the site intact.

Name	Address
VELIBOR PETRIC	#118-6550 NELSON AVE.
Jim CURRIE	2007 ESSEX ABBOTSFORD
Frank Simms	305-111 Windsor Rd, North Vancouver,
Muhammad Onal	5237 Hollywood Dr, Rnd, BC V7E 4V3
Susan Toews	3984 Lorraine Ave, N. Vancouver, BC V7K 4B8
KOTARO HARAGUCHI	#508-9651 GLENDOWER DR RICH
Setoko Kishi	4611 Moncton Rich.
SABURO MAEKAWA	3361 MANMOUTH AVE VAN
TAIZO NAKATANI	6000 McDONALD ST VAN
KAZUKO NAKATANI	" "
M. NISHI	8740 FOSTER RD RICH
KUNIKO TAKAHASHI	1201-7995 WESTMINSTER HWY RICH

Steveston Japanese Fishermen's Hospital Complex Preservation Project

A group of keen Steveston heritage enthusiasts, who are the descendants of pioneering Japanese Fishermen have garnered community and financial support to relocate and restore the Doctors' Administration Office, which was part of the original hospital complex. This historic building was built by the Steveston Japanese Fishermen's Benevolent Society, circa 1900.

The undersigned support the preservation of this, the most historical heritage building remaining in the Steveston/Richmond area. Its relocation to the Steveston Museum Site, will be with minimal environmental disruption leaving substantial open and green space on the site intact.

Name	Address
H. KOSHIMURA (H.K)	3195 44 th AVE VAN
F. Anz	1503 1323 Homer St. Vancouver
J. Anz	11851 SEABROOK CRES RICHMOND VIA ITB
Chinami Kobashi	628 St Catharines St. Vancouver
Akiko Bucci	#114-6888 Robson Dr., Richmond
K. Mehta	11071 King Rd. Richmond
MIDORI HAMADZ	8444 Cook CRES. RMD
Gina Chau	4811 Duncliff Rd. Richmond
Sylvia Tong	7320 Balfour Court. Richmond
Yoko Hop	4860 Bananist Dr. Rich
Chikako Sakamoto	95-6900 BRICH ST Richmond
T. Hamada	7251 BATES Rd Richmond
Shirley Lane	2229 HAWTHORNE AVE Port Coquitlam B.C.
M. Hamada	10931 SPRINGMOUNT DR Richmond
A. Hamada	205-8635 HEARNE ST VANCOUVER

Steveston Japanese Fishermen's Hospital Complex Preservation Project

A group of keen Steveston heritage enthusiasts, who are the descendants of pioneering Japanese Fishermen have garnered community and financial support to relocate and restore the Doctors/Administration Office, which was part of the original hospital complex. This historic building was built by the Steveston Japanese Fishermen's Benevolent Society, circa 1900.

The undersigned support the preservation of this, the most historical heritage building remaining in the Steveston/Richmond area. Its relocation to the Steveston Museum Site, will be with minimal environmental disruption leaving substantial open and green space on the site intact.

Name	Address
M. WADA	10860 MORTFIELD RD RMD
H. WADA	10860 MORTFIELD RD RMD
A. MIZUTA	170 W. 43 RD AVE VANCOUVER BC
K. NISHI	5850 CLARENDON ST. VAN. B.C. V5R 3K6
T. MUKAI	6670 ST. CHARLES PL Bby
Mary In Chiba	3091 BROADWAY ST. RICH. B.C. V7E 2Y1
Kan Kameya	403-6651 Miura Blvd. Rich B.C. V6Y 1R2
Hiroko Gye	3160 Hunt St. Rich. B.C. V7E 2L4
M. Mizuyabu	1120 6 TH AVE RICHMOND V7E 3E5
Yochiyo NISHII	2943 E 51 ST AVE VANCOUVER V5S 1P9
T. Wada	2437 E 18 TH AVE VANCOUVER, V5M 2P3
S. Hama	7-7760 BLUNDELL RD RICHMOND V6Y 3S9

(17)

Steveston Japanese Fishermen's Hospital Complex Preservation Project

Name	Address
Kazuji Muro	3908 GEORGIA ST
Miyuki Nitta	7-5311 LACKNER CRES RICHMOND BC V7E 6B7
Yoko Yamashiro	4711 DUNFELL RD. RMD BC V7E 3M8
Kiyoko Hama	102-2020 Burrwood Ave Burnaby
Tomoko Kariya	11140 BARKENTINE PL RMD
M. Yomomoto	36-8591 BLUNDELL RD RMD
Kyoko Hama	724 ST. ASH AVE E. VANCOUVER V5X 1L7
Shimpei Okabe	57-3711 Robson Court Richmond B.C.
MINAKO OKABE	"
H. YAMANAKA	3571 GARRY / RICHMOND B.C.
M. Hamauchi	11091 2nd Ave Rich.
Shoji	2401-2088 MADISON AVE Bby
Abiko Shoji	2401-2088 Madison Ave Bby
Yoshiko	5580 Munton St Rich BC V7E 3B 4
S. Wada	5812 DUMFRIES ST VANCOUVER B.C.
KEIKO YAMANAKA	3571 GARRY ST RMD
Michiko Natandee	#32-3417 E 49 AVE VAN
JACK Kawabata	3825 HUNT ST RMD

(18)

Steveston Japanese Fishermen's Hospital Complex Preservation Project

A group of keen Steveston heritage enthusiasts, who are the descendants of pioneering Japanese Fishermen, have garnered community and financial support to relocate and restore the Doctors' Administration Office, which was part of the original hospital complex. This historic building was built by the Steveston Japanese Fishermen's Benevolent Society, circa 1900.

The undersigned support the preservation of this, the most historical heritage building remaining in the Steveston/Richmond area. Its relocation to the Steveston Museum Site, will be with minimal environmental disruption leaving substantial open and green space on the site intact.

Name	Address
KOTARO HAYASHI	202-8700 JONES RD RICHMOND B.C. V6Y3X7
SHIZUO TANAKA	2317 RUDERT ST. VAN. BC V5M 3T0
Akemi TANAKA	2317 RUDERT ST. VAN. BC V5M 3T0
Camelia Ho	#1606-5400 Aldubridge Way Richmond, BC
MARY BR.	7700 FROBISHER DR. RICHMOND
Lynn Flowers Elmer	2611 Carrick Rd. Richmond V7C 3P5
PAT PERKINS	114-5500 Anaxous Rd. Richmond V7E 6M9
T. Takahashi	5451 Calderwood Cr. Rd. V7C 3G2
Dave Zamku	7571 Montford Rd. V7C 2K7
Eric Tanaka	7571 Montford Rd. Richmond V7C 2K7
FRANCES HAMAKAWA	#207 - 4390 GRANGE ST BC
TERUKO MATSUBARA	7703 BUTLER ST. VAN

Steveston Japanese Fishermen's Hospital Complex Preservation Project

Name	Address
YOSHIKO MATSUMOTO	755 E 24 AVE VAN
SUSAN NIE	#2-4280 BLUNDELL RICH.
RISEKO NISHI	*2-4411 WILLIAMS RD RICH.
EIKO NISHIKIHAMA	508-5088 KWANTLEN ST RICH.
DAWN STOLBERG	12028 OSPREY CRT RICH.
KAZUICHI TASARA	5360 FRANCIS RD RICH.
CHIEKO TASARA	" "
STEVE TASARA	7617 EPERSON RD RICH.
DIANNE TASARA	" "
JOE TERANISHI	5580 MONCTON ST RICH.
MASAO NOMURA	5460 MONCTON RICH.
KIKUYE NOMURA	" " RICH.
MASAKO UYEDA	3-8191 FRANCIS RD RICH.
KIYOSHI UYEHAMA	604-7995 WESTMINSTER HWY RICH.
TOMIKO UYEHAMA	" " "
JIM WATANABE	9591 STEVESTON HWY RICH.
SACHIKU WATANABE	" "
ARIKO YADOKORO	3146 BROADWAY ST RICH.
MICHIKO YAMAMOTO	36-8591 BLUNDELL RD RICH.

(2)

(9)

Steveston Japanese Fishermen's Hospital Complex Preservation Project

A group of keen Steveston heritage enthusiasts, who are the descendants of pioneering Japanese Fishermen have garnered community and financial support to relocate and restore the Doctors' Administration Office, which was part of the original hospital complex. This historic building was built by the Steveston Japanese Fishermen's Benevolent Society, circa 1900.

The undersigned support the preservation of this, the most historical heritage building remaining in the Steveston/Richmond area. Its relocation to the Steveston Museum Site, will be with minimal environmental disruption leaving substantial open and green space on the site intact.

Name	Address
M. Creston Shore	1226 Rodlin St. Victoria, BC V8V 3R7
B. Burgess	335 Darnley DR VICTORIA V7S6G5
P. Watan	1192 Quake St. Victoria BC V8W 2K5
Frances Forster	1549 Wilmot Pl Victoria V8L5S3
Shunor	1163 Chapman St Vic, BC V8V 0T8
Ed. Maedonza Id	307 2655 Prior Street Victoria V8A 4S8
Paik Kurushima	107-1695 Augusta Ave, Bcy BC.
J. Kurushima	1200 Tolmie Ave, Victoria, V8X 2H9
S. Kurushima	1200 Tolmie Ave. V8V 2H9
D. Shepherd	859 Villance St Victoria V8X 0P5
Teruyo Sano	4070 Jason Pl. Victoria V8N 4T6
Rodney Herring	"
Jacob Darsen	P.O. Box 8048 Victoria, B.C. V8W 3R7
Jody Patson	943-A Selkirk, Victoria
Alisa Kage	7224 Vejaness Rd Saanichton BC V8M 1M2

Steveston Japanese Fishermen's Hospital Complex Preservation Project

A group of keen Steveston heritage enthusiasts, who are the descendants of pioneering Japanese Fishermen have garnered community and financial support to relocate and restore the Doctors' Administration Office, which was part of the original hospital complex. This historic building was built by the Steveston Japanese Fishermen's Benevolent Society, circa 1900.

The undersigned support the preservation of this, the most historical heritage building remaining in the Steveston/Richmond area. Its relocation to the Steveston Museum Site, will be with minimal environmental disruption leaving substantial open and green space on the site intact.

Name	Address
Shizue Fukuda	10291 Algonquin DR
H. KOSHIMURA	3195 E 48 th AVE VAN.
E. Yagihara	5738-49A AVE. Delta
YOKI LIN	5151 HOLLYWOOD DR. RICH.
KUNIKO TABATA	12366 ALLIANCE DR. RICHMOND
Wakako Okamoto	#1-4311 Bonaventure St RICH.
Paul Ando	#1503, 1322 HOMER ST VANCOUVER
Franko Ando	#1503, 1723 HOMER ST. VANCOUVER
Tomoko Kakchi	7700 Broadmead Blvd. Richmond
SAKAMOTO CHIKAKO	
Machiko Takeda	8061 M. Gregor Ave Bcy.
L. Y. Ho P	4860 Bonarist Dr. Rich.
K. MEHTA	11071 King Rd. Rmd. B.C.
N. YAGIHARA	543 8492 187 DELTA
Tamie Tada	4034 Peterson Dr.

Steveston Japanese Fishermen's Hospital Complex Preservation Project

A group of keen Steveston heritage enthusiasts, who are the descendants of pioneering Japanese Fishermen have garnered community and financial support to relocate and restore the Doctors'/Administration Office, which was part of the original hospital complex. This historic building was built by the Steveston Japanese Fishermen's Benevolent Society, circa 1900.

The undersigned support the preservation of this, the most historical heritage building remaining in the Steveston/Richmond area. Its relocation to the Steveston Museum Site, will be with minimal environmental disruption leaving substantial open and green space on the site intact.

Name	Address
LOI LEMINH	3120 FRANCIS RD. RICHMOND, BC. V7C 4T2
ANN LAM	3120 FRANCIS RD. RICHMOND, BC. V7C 4T2
ANGELICA LEMINH	7355 ST. ANDRE, MONTREAL, QC, H2R 2P6
NANCY SHIYOSI	139-7651 MIDVA. BLVD.
KEN SHIYOSI	8431 LAIDMORE RD.
CORY SHIYOSI	8431 LAIDMORE RD.
SHANE SHIYOSI	8431 LAIDMORE
Kim Newton	Foot of Gore. Ave, Nan, BC.
Sandy DeRuiter	11540 PELICAN CRT
Bill DeRuiter	11540 PELICAN CRT
Dady Stone	4871 COLLINGS WAY
Brian Stone	4871 COLLINGS WAY

Steveston Japanese Fishermen's Hospital Complex Preservation Project

Name	Address
Shelley McDonald	24831 80 th Ave, Langley BC.
MARIE McDONALD	5480 Moncton St. Richmond
MINOR YAMAMOTO	4206 KITCHENER ST BBY
MARIA FILIPCZAK	5196-12 AVE DELTA BC
KAZIK FILIPCZAK	5196-12 AVE DELTA BC
EDWARD HIROSE	7960 PROBISHER DR RICHMOND BC.
JUDY HIROSE	7960 PROBISHER DR. RICHMOND BC.
SAM SATOSANO	9340 MCBURNER RMD.
DAVID TRAKTUK	3811 MONCTON ST.
TSURUE TAMAKI	5451 MONCTON ST.
ITSUJI HAMADE	5191 MONCTON ST.
K. HAMADE	" " "
TSUNEAKI NAKAMURA	#130-12480 No 1 RD
FUSAYO NAKAMURA	" "
MANA NAKAMURA	" "
Keiko Shimada	8471 Mowbray Rd. Rich.
LISA OBERMEYER	174032 HVLAND RD SURREY
BRIAN HAMAGUCHI	4747 ALBERT ST BBY
SHIZUE HAMAGUCHI	" "

Steveston Japanese Fishermen's Hospital Complex Preservation Project

A group of keen Steveston heritage enthusiasts, who are the descendants of pioneering Japanese Fishermen have garnered community and financial support to relocate and restore the Doctors/Administration Office, which was part of the original hospital complex. This historic building was built by the Steveston Japanese Fishermen's Benevolent Society, circa 1900.

The undersigned support the preservation of this, the most historical heritage building remaining in the Steveston/Richmond area. Its relocation to the Steveston Museum Site, will be with minimal environmental disruption leaving substantial open and green space on the site intact.

Name	Address
SOPHIA SHIMADA	6208-5117 GARDEN CITY RD. RICHMOND BC
ANDREW SOARES	10246 RAILWAY AVE. RICHMOND BC
Gayle Nye	5025 Del Monte Ave, Victoria BC V8Y 1W9

Steveston Japanese Fishermen's Hospital Complex Preservation Project

A group of keen Steveston heritage enthusiasts, who are the descendants of pioneering Japanese Fishermen have garnered community and financial support to relocate and restore the Doctors/Administration Office, which was part of the original hospital complex. This historic building was built by the Steveston Japanese Fishermen's Benevolent Society, circa 1900.

The undersigned support the preservation of this, the most historical heritage building remaining in the Steveston/Richmond area. Its relocation to the Steveston Museum Site, will be with minimal environmental disruption leaving substantial open and green space on the site intact.

Name	Address
Sally Nasu	5270 Parklawn St. Burnaby B.C. V5B2G3
Robert Nasu	2727 E 47th Ave VANCOUVE BC V5S 1C2
EDWARD SHOJI	33 HOWARD AVE BURNABY B.C. V5A 3P3
SHIRLEY SHOJI	✓ ✓
Tom Onodera	2869 McGill St. VAN. B.C. V5K 1H7
M. Maki	2869 McGill St. VAN V5K 1H7
James Nasu	5270 Parklawn Burnaby V5B2G3
Keith Maynard	6929 Louisa St Bby V5B 1Y6
Edmond	1171 DUNLOP AVE BBy V5B 3W9
Rose Kunitake	" " " " "
Jay Teranishi	#205 HSL HARWOOD ST. V6G 1T2
Irene Kerepeta	1823 AKIWAHED DR. V5B 1K7
Kuni Kerepeta	18-301 Klahanie Dr. Phosdy
Alan Kerepeta	11172 Scarborough Pkta
Shimada	#233-2688 Spauld. Blvd B.C.

21

15

Steveston Japanese Fishermen's Hospital Complex Preservation Project

A group of keen Steveston heritage enthusiasts, who are the descendants of pioneering Japanese Fishermen have garnered community and financial support to relocate and restore the Doctors/Administration Office, which was part of the original hospital complex. This historic building was built by the Steveston Japanese Fishermen's Benevolent Society, circa 1900.

The undersigned support the preservation of this, the most historical heritage building remaining in the Steveston/Richmond area. Its relocation to the Steveston Museum Site, will be with minimal environmental disruption leaving substantial open and green space on the site intact.

Name	Address
Mitsuki Hamakawa <i>M. Hamakawa</i>	5031 OLIVER DRIVE, RMD BC
Mika Anna <i>M. Anna</i>	6880 Cassell Cresc. Rich. BC
Juue Ogiu <i>J. Ogiu</i>	4972 56 th ST. DELTA BC.
Kay Hamakawa <i>K. Hamakawa</i>	5031 Oliver Drive, Richmond, BC
SUMIKO URYATA	4926 7A-AVE, DELTA, B.C.
Mechiko Watanabe	32-3417 E 49 Van B.C.
<i>Mechiko Tabata</i> MECHIKO TABATA	5060 WILLIAMS RD RICH BC
SETSUKO TABATA <i>S. Tabata</i>	" " "
KAYUKO OGIU <i>K. Ogiu</i>	4972 56 th ST. DELTA B.C.
AKIRA OGIU <i>A. Ogiu</i>	" "
Nobuo TAKASHITA	6026 DOVER Rd, Richmond, B.C.
REI TAKASHITA	6026 DOVER Rd, Richmond, B.C.
K. TAGITSU <i>K. Tagitsu</i>	6447 SUMMIT CRESC. DELTA
Y. TAGITSU <i>Y. Tagitsu</i>	" "
C.M. HIRANO <i>C.M. Hirano</i>	3531 FRANCIS Rd. RMD

Steveston Japanese Fishermen's Hospital Complex Preservation Project

A group of keen Steveston heritage enthusiasts, who are the descendants of pioneering Japanese Fishermen have garnered community and financial support to relocate and restore the Doctors/Administration Office, which was part of the original hospital complex. This historic building was built by the Steveston Japanese Fishermen's Benevolent Society, circa 1900.

The undersigned support the preservation of this, the most historical heritage building remaining in the Steveston/Richmond area. Its relocation to the Steveston Museum Site, will be with minimal environmental disruption leaving substantial open and green space on the site intact.

Name	Address
<i>M. Hamakawa</i>	5231 Moncton St. ²⁷⁷⁻⁴⁵⁶⁵
Kiyoko TANAKA	5520 Moncton St. ²⁷⁷⁻⁸⁵⁶²
Linda Matsuba	5500 Moncton St. Richmond ^{277 5237}
<i>Emin Matsuba</i>	5500 Moncton St. Rich ^{277 5237}
<i>Emin Matsuba</i>	5500 Moncton St. Richmond
Masaru Hayashi	#322-376 Powell St. Van.
TAGEHISA KAWASAKI	1734 GORDON AVE ^{W. Van}
TAKIKO KAWASAKI	" "
FRANCIS MIYASHITA	2009 E 27 AVE VAN
YOSHIYE NAKATA	#303-1150 E 29 VAN
AKIRA UYENO	2607 E 42 ND AVE VAN
KIKUMI UYENO	" "
YASUO UYENO	7177 ELLIOT ST VAN
TSUYAKO UYENO	" "

(15)

(14)

**Steveston Japanese Fishermen's Hospital
Complex Preservation Project**

Name	Address
KIYOE YADA	3492 E 49 TH VAN
KIYOKO YADA	2657 E 47 TH AVE VAN
AKEMI SAKIYAMA	#101-25 E 13 TH VAN
KIYOSHI SHONO	734 E 54 TH AVE VAN
KEIKO SHONO	" "
TSUNAYE YAMASHITA	3010 E 19 TH AVE VAN
HIKARU YOSHIKAWA	372 E 58 TH AVE VAN
SAYOKO YOSHIKAWA	" "

**Steveston Japanese Fishermen's Hospital
Complex Preservation Project**

A group of keen Steveston heritage enthusiasts, who are the descendants of pioneering Japanese Fishermen have garnered community and financial support to relocate and restore the Doctors/Administration Office, which was part of the original hospital complex. This historic building was built by the Steveston Japanese Fishermen's Benevolent Society, circa 1900.

The undersigned support the preservation of this, the most historical heritage building remaining in the Steveston/Richmond area. Its relocation to the Steveston Museum Site, will be with minimal environmental disruption leaving substantial open and green space on the site intact.

Name	Address
Mike Jimigawa	5680 CANTLEY RD RICH
Ben Goshida	11751 DUNFORD RD RICH
Alan Goshida	10350 RAINWAY AVE, RICH
Mini Matsuo	8680 CANTLEY ROAD RICH
 	8060 MINLER RD RICH
Don Winkelman	3775 BRIMLEY RD
Shin Nakada	3871 Richmond St
TED LORENZ	4657 BRITANNIA DR
CHIE HANSH LEE	4686 HERMITAGE DR RICH
Mark Bowley	#1-7460 HOFFATT RD
K. Muthy - MOVE TO QUEBEC CITY	10451 - SWINSON CR
Shirley Moller	138 7651 MINNER BLVD
M. Imamura	8680 CANTLEY RD. BMD

Steveston Japanese Fishermen's Hospital Complex Preservation Project

A group of keen Steveston heritage enthusiasts, who are the descendants of pioneering Japanese Fishermen have garnered community and financial support to relocate and restore the Doctors' Administration Office, which was part of the original hospital complex. This historic building was built by the Steveston Japanese Fishermen's Benevolent Society, circa 1900.

The undersigned support the preservation of this, the most historical heritage building remaining in the Steveston/Richmond area. Its relocation to the Steveston Museum Site, will be with minimal environmental disruption leaving substantial open and green space on the site intact.

Name	Address
Yotaka Matsui	1369 Chartwell Dr. West Vancouver
Kanebo Jaku	1209-1370 Hornwood St Van. B.C.
Mark Ando	1590 Cambridge Pl. W. Van.
K. OGATAWARA	4425 DIXON ST. B.C.
K. Tsurusaki	44-2102 Folkstone Way West Van.
ISABEL TANAKA	2002-1090 Burnham St. Van. B.C. W2.253
Mutsumi Suraima	1905-5833 Wilson Ave VSH 9R8
Yoshikazu SHODA	10-5237 OAKMOUNT CRESCENT, BURNABY
Saiga Kuwabata	3802-123 E 14th Ave SE, VANCOUVER
M. K. Kim	501-1470 Pender Street W. Vancouver
Mike Inoue	2935 W. 48th Ave. Vancouver B.C.
Andy Tsukumo	11840 Seabrook Crescent, Rmd. BC
TAKESHI SUAGAMA	7223 CURTIS ST., BURNABY, B.C.
SEIJO TAKAGAWA	17996. 99th AVE Surrey B.C.
MAX YUKI	10531 Seahaven Dr. Richmond. BC

Steveston Japanese Fishermen's Hospital Complex Preservation Project

A group of keen Steveston heritage enthusiasts, who are the descendants of pioneering Japanese Fishermen have garnered community and financial support to relocate and restore the Doctors' Administration Office, which was part of the original hospital complex. This historic building was built by the Steveston Japanese Fishermen's Benevolent Society, circa 1900.

The undersigned support the preservation of this, the most historical heritage building remaining in the Steveston/Richmond area. Its relocation to the Steveston Museum Site, will be with minimal environmental disruption leaving substantial open and green space on the site intact.

Name	Address
Karen Hirano Hirano	3531 Francis Rd. Rmd. BC
Ken Sab Kato	611 Southwicks Cresc. B.C.
JAMES SUTHERLAND	85 10220 Dunbar Dr. Rmd BC.
Rose Sullivan Smith	#88-10220 Dunbar Dr. Rmd. BC
CHRIS PIPPLE	5580 Floyd Ave Rmd. BC
Mary Nishi	7700 Railway Ave Rmd. BC.
Emily Nishi	7700 RAILWAY AVE Rmd. B.C.
Mary Muris	3231 Regent St Rmd.
Ky Yoneda	8851 Suerpene Dr. Rmd. BC
Carol Naylor	10791 Rosetti Ct Rmd BC

(15)

(10)

Steveston Japanese Fishermen's Hospital Complex Preservation Project

A group of keen Steveston heritage enthusiasts, who are the descendants of pioneering Japanese Fishermen have garnered community and financial support to relocate and restore the Doctors'/Administration Office, which was part of the original hospital complex. This historic building was built by the Steveston Japanese Fishermen's Benevolent Society, circa 1900.

The undersigned support the preservation of this, the most historical heritage building remaining in the Steveston/Richmond area. Its relocation to the Steveston Museum Site, will be with minimal environmental disruption leaving substantial open and green space on the site intact.

Name	Address
EIZO HAYASHI	7280 NO 4 RD RICHMOND B.C.
MAARI HAYASHI	7280 No. 4 Road, Richmond B.C.
Gordon Hayashi	7280 No. 4 Road, Richmond B.C.
Billy Hasekawa	6210 187 St. Cloverdale, B.C.
Susan	7280 Blundell Rd, B.C.
H. MIZUTA	170 W. 43 AVE VAN. B.C.
MINORU	10860 MORTFIELD RD TRND.
Geo Herbert	1129 E 10 TH AVE VAN
Yuko Herbert	" "
SETSUKO KITANO	2969 E 42 ND AVE VAN
Yukito Manno	5060 SOMERVILLE ST VAN
Hiard Manno	" "

Steveston Japanese Fishermen's Hospital Complex Preservation Project

A group of keen Steveston heritage enthusiasts, who are the descendants of pioneering Japanese Fishermen have garnered community and financial support to relocate and restore the Doctors'/Administration Office, which was part of the original hospital complex. This historic building was built by the Steveston Japanese Fishermen's Benevolent Society, circa 1900.

The undersigned support the preservation of this, the most historical heritage building remaining in the Steveston/Richmond area. Its relocation to the Steveston Museum Site, will be with minimal environmental disruption leaving substantial open and green space on the site intact.

Name	Address
MASAO MIZUMOTO	4791 CAMLANN COURT RICHMOND, B.C. V7C 4S1
Muniko Mizumoto	"
PATRICK LI	4760 DEERFIELD CREST ST RICHMOND, B.C. V6X 2Y6
TOMOKO LI	"
MISAKO MIYAGI	45-7533 HEATHEN ST. RICHMOND, B.C. V6Y 2P8
MACHIKO NAKAHORI	2182 WEST 20TH AVE. VANCOUVER, B.C. V6L 1G1
CHULCHI NAKAHORI	" "

Steveston Japanese Fishermen's Hospital Complex Preservation Project

A group of keen Steveston heritage enthusiasts, who are the descendants of pioneering Japanese Fishermen have garnered community and financial support to relocate and restore the Doctors/Administration Office, which was part of the original hospital complex. This historic building was built by the Steveston Japanese Fishermen's Benevolent Society, circa 1900.

The undersigned support the preservation of this, the most historical heritage building remaining in the Steveston/Richmond area. Its relocation to the Steveston Museum Site, will be with minimal environmental disruption leaving substantial open and green space on the site intact.

Name	Address
L. Duffly	5148 Hollowfield Ave
Joseph Chy	7371 HANNING CRT V7A4J3
M. W. [unclear]	4080 Fortune Ave V1E5P1
C. Bambley	4093 Cowardish Dr. Rd.
Roby	5940 Puffin. Crt.
Jamie [unclear]	11680 Ylone Dr.
Judy [unclear]	9360 Delphin Ave. Rd
[unclear]	4760 Pendlebury Rd Road.
[unclear]	3031 #7 Rd Rmch.
[unclear]	11733 Kingsbridge Dr
Arisee Fontaine	3560 #7 Road
Michelle Fontaine	3660 #7 Road.

Steveston Japanese Fishermen's Hospital Complex Preservation Project

A group of keen Steveston heritage enthusiasts, who are the descendants of pioneering Japanese Fishermen have garnered community and financial support to relocate and restore the Doctors/Administration Office, which was part of the original hospital complex. This historic building was built by the Steveston Japanese Fishermen's Benevolent Society, circa 1900.

The undersigned support the preservation of this, the most historical heritage building remaining in the Steveston/Richmond area. Its relocation to the Steveston Museum Site, will be with minimal environmental disruption leaving substantial open and green space on the site intact.

Name	Address
R. K. ARAKI	6880 SHAWNIGAN PL. RICHMOND V7E 4W9
[unclear]	6791 Juniper Drive Richmond, B.C. V7E 4Z5
L. Araki	6880 Shawnigan Pl Richmond, B.C. V7E 4W9
Kyle Araki	6880 Shawnigan Pl. Richmond B.C. V7E 4W9
Alexander Cusack	6-8747 Granville St. Vancouver, BC V6P5A4
[unclear]	3062 EAST 28TH AVE VANCOUVER B.C. V6R 1S5.
[unclear]	6880 Shawnigan Pl Richmond, B.C. V7E 4W9
[unclear]	6891 SHAWNIGAN PL RICHMOND V7E 4W9
[unclear]	S/A
[unclear]	S/A
B. Falconer	6881 Shawnigan Rd.

105

12

11

19

20

Steveston Japanese Fishermen's Hospital Complex Preservation Project

A group of keen Steveston heritage enthusiasts, who are the descendants of pioneering Japanese Fishermen have garnered community and financial support to relocate and restore the Doctors' Administration Office, which was part of the original hospital complex. This historic building was built by the Steveston Japanese Fishermen's Benevolent Society, circa 1900.

The undersigned support the preservation of this, the most historical heritage building remaining in the Steveston/Richmond area. Its relocation to the Steveston Museum Site, will be with minimal environmental disruption leaving substantial open and green space on the site intact.

Name	Address
Stephen Ferguson	902-2225 Holdan Avenue, Burnaby
Esther Chung	1612 Orkney Place, ^{North} Vancouver
Daniel Chung	1612 Orkney Place, North Vancouver
Ethel Chung	1612 Orkney Place, N. Van
Joanne Chung	1612 Orkney Place, North Vancouver
Norman Ferguson	6461 Dyke Road, Richmond
Brett Ferguson	6461 Dyke Road, Richmond
Martin Kurath	3060 Garry St, Richmond
Kaguo Oye	3060 Garry St, Richmond
Norma Kobayashi	7691 Lindsay Ct, Richmond
Joan Krueger	11531 Larpine Cr, Richmond
Kiyoko & Craig Smith	8340 Demorest Pl, Richmond, B.C.
J. Krueger	11531 LARPINE Cr. Rich

Steveston Japanese Fishermen's Hospital Complex Preservation Project

Name	Address
JAY + JANE DAEN	1201 MITCHEL ROAD VAN 107
Kyle Ferguson	6461 Dyke Rd Richmond
Morraine Shikigae	5521 The Manly Blvd, Rich Richmond
Joan Demchuck	3500 Dover D. Rich
W.D. Nabauer	2881 Wood St Van
Shirley Thompson	8611 Bowditch Rd. Rich
Barbara & Ken Schuder	8351 Capra Dr Rich
21★ Sue + Dave Vassan	6740 Maple Rd Rich
Evelyn Devecars	3091 Steveston Hwy. V7E 2J4
J. CAMPBELL, B. CAMPBELL	8780 Ashbrook Ct, RMD BC
E. Ferguson	23227 Francis Ave
A Ferguson	#109 2017 92a Ave Langley BC
Scott Masse	703-205 GILFORD WY PORT MOODY, BC V3H5G9

Steveston Japanese Fishermen's Hospital Complex Preservation Project

A group of keen Steveston heritage enthusiasts, who are the descendants of pioneering Japanese Fishermen have garnered community and financial support to relocate and restore the Doctors' Administration Office, which was part of the original hospital complex. This historic building was built by the Steveston Japanese Fishermen's Benevolent Society, circa 1900.

The undersigned support the preservation of this, the most historical heritage building remaining in the Steveston/Richmond area. Its relocation to the Steveston Museum Site, will be with minimal environmental disruption leaving substantial open and green space on the site intact.

Name	Address
<i>B. Keeles</i>	<i>20657 86a Ave. Langley V1M 2X3</i>
SHIRLEY LAKE	1502-1328 W Pandw Van BC V6E 4T
<i>D.P. Doetsen</i>	<i>8111 118A ST. Delta BC V4N 7C1</i>
<i>G. Brown</i>	<i>204-2628 Yew St. Van. BC V6H 4T4</i>
<i>P. Bond</i>	<i>19-8120 General Currie Rd. Richmond BC V6Y 3U8</i>
<i>Ronald Lobo</i>	<i>6051 Nanskan Cr. Rmd BC V7C 2W5</i>
<i>Dorb Schoebel</i>	<i>6960 Waltham Av. Bby. V5S 5V5</i>
<i>Linda Alvarado</i>	<i>7620 Thontano Pl. Rmd. V7C 2K8</i>
<i>Susan Forrest</i>	<i>4618 London Mews, Delta V4K 4W9</i>
<i>R. Leung</i>	<i>7360 Gilbert Rd., Lad., BC V7C 3W2</i>
<i>Teresa Quiro</i>	<i>6620 Walker Ave, Burnaby BC V5E 3E9</i>
<i>Celia Aotaki</i>	<i>5-12331 Akeley Rd. Richmond V6V 2S3</i>

(12)

Steveston Japanese Fishermen's Hospital Complex Preservation Project

A group of keen Steveston heritage enthusiasts, who are the descendants of pioneering Japanese Fishermen have garnered community and financial support to relocate and restore the Doctors' Administration Office, which was part of the original hospital complex. This historic building was built by the Steveston Japanese Fishermen's Benevolent Society, circa 1900.

The undersigned support the preservation of this, the most historical heritage building remaining in the Steveston/Richmond area. Its relocation to the Steveston Museum Site, will be with minimal environmental disruption leaving substantial open and green space on the site intact.

Name	Address
<i>Kathy Wickham</i>	<i>7800 Belair Dr. Rmd V7A 1B8</i>
<i>Adam Wickham</i>	<i>7800 Belair Drive Richmond</i>
<i>Tyler Mann</i>	<i>10A-2298 MCBAIN AVE VANCOUVER BC</i>
<i>Richard Alder</i>	<i>604 454 86 34</i>
<i>TERRY THORSTENSON</i>	<i>12420 ALLIANCE DR. STEVESTON</i>
<i>Raymond Phang</i>	<i>22275 Garbutt Dr. Richmond</i>
<i>Shelley Doubert</i>	<i>4420 Garden City Rd. Rmd BC</i>
<i>AVA MADRUSAN</i>	<i>12506 Wescott St Richmond</i>
<i>Betty Falconer</i>	<i>6851 Shawigan Pl. Richmond</i>
<i>Joelle Allen</i>	<i># 14 12211 Camille Rd. Richmond BC V6V 2H8</i>
<i>Karen Wong</i>	<i>6551 Quimper Drive Rmd. BC V7E 4Z4</i>
<i>Pandra Au</i>	<i>9160 Walford St Richmond BC V6X 1P4</i>
<i>Rob Garbo</i>	<i>9425 Kingsley Cr. Richmond BC</i>

(13)

107

22

23

Steveston Japanese Fishermen's Hospital Complex Preservation Project

A group of keen Steveston heritage enthusiasts, who are the descendants of pioneering Japanese Fishermen have garnered community and financial support to relocate and restore the Doctors' Administration Office, which was part of the original hospital complex. This historic building was built by the Steveston Japanese Fishermen's Benevolent Society, circa 1900.

The undersigned support the preservation of this, the most historical heritage building remaining in the Steveston/Richmond area. Its relocation to the Steveston Museum Site, will be with minimal environmental disruption leaving substantial open and green space on the site intact.

Name	Address
CHELSEA LEO <i>Chelsea</i>	313-8060 JONES RD RICHMOND, BC V6V 1Y0
Chris Murdoch	6188 Maple rd
Sherman Lee	4620 Viking Way Richmond
Lauren Chakal	1498 Agassiz court Richmond, BC
Nicole Henderson	212-8060 Jones Rd Richmond, BC
Anna Le	East 27th Ave Vancouver, BC
Celine Butner	
Xarom Chakal	10540 Agassiz ave Richmond, BC
Kyle Chakal	10540 Agassiz ave Richmond, BC
Tommy Vu	10540 Agassiz ave 1503-7531 Westminster Hwy V6V 4V9 RICHMOND BC
Troy Yoshida	5300 Lepuhy Crescent Richmond BC
Dave Yoshida	5300 Lepuhy Crescent Richmond B.C.
Arlene Yoshida	5300 Lepuhy Crescent Richmond B.C.

(13)

Steveston Japanese Fishermen's Hospital Complex Preservation Project

Name	Address
David Lee	1254620 Viking Way
Grace Lui	604-275-3841
Celine Butcher	604-729-5587
JAMIE HIGO	604-837-2168
PIORDIE MORIMOTO	604-241-1000
MINORU HIRANO	604-723-9062
RANZEL SAGUM	778-229-5847
RYAN URYAMA	604-838-6590
TROY TAKAZAKI	604-789-4023
TRAVIS TAYLOR	604-838-7391
JASON PURCELL	778-892-5753
BRYAN NYKON	604-779-1857
LESTER LAM	604-723-7077
ED TAN	604-830-3661
DON SOO	604-785-0000
DAB TERAMURA	604-328-4858
CYNTHIA TAN	778-319-3396
CHRISTINE MORIMOTO	604-773-3282
BRENT TANAKA	604-785-5064

Richmond
BC

108

(19)

Steveston Japanese Fishermen's Hospital Complex Preservation Project

A group of keen Steveston heritage enthusiasts, who are the descendants of pioneering Japanese Fishermen have garnered community and financial support to relocate and restore the Doctors/Administration Office, which was part of the original hospital complex. This historic building was built by the Steveston Japanese Fishermen's Benevolent Society, circa 1900.

The undersigned support the preservation of this, the most historical heritage building remaining in the Steveston/Richmond area. Its relocation to the Steveston Museum Site, will be with minimal environmental disruption leaving substantial open and green space on the site intact.

Name	Address
Henry Tanaka	428 Glenbrook Dr. N. West
Monica Chan	3640 Oakton Place Richmond
Jean Carham	850 Broadlake Pl Burnaby
Jennifer Wong	4575 E. Georgia St. Bly
Christina Caporale	4742 E Pender St. Bly
Liana Buljevic	1906 Alma Street Van.
Leolie Fisher	8564 Woodlawn Pl Bly
Debra Ure	1004-1003 Hazel St. Bly
Sobhana Thiara	2241 Trillium Pt. North Van
Ann Yu	4155 cherrywood Cres.
Salvina Oreta	402-888 Gauthier Ave Coquitlam, BC
Lucy Li	3350 Robson Dr Coquitlam BC
Phoebe Yeh	5843 Carson St. Burnaby V5J2Z6

Steveston Japanese Fishermen's Hospital Complex Preservation Project

A group of keen Steveston heritage enthusiasts, who are the descendants of pioneering Japanese Fishermen have garnered community and financial support to relocate and restore the Doctors/Administration Office, which was part of the original hospital complex. This historic building was built by the Steveston Japanese Fishermen's Benevolent Society, circa 1900.

The undersigned support the preservation of this, the most historical heritage building remaining in the Steveston/Richmond area. Its relocation to the Steveston Museum Site, will be with minimal environmental disruption leaving substantial open and green space on the site intact.

Name & Signature	Address
Patricia Tanaka P. Tanaka	428 Glenbrook Dr. New Westminster
Lorraine Seath L. Seath	373 Hickey Dr. Coquitlam BC
Myrna McGrath M. McGrath	11745 246 St. Maple Ridge BC V4R1K7
Rob Seath R. Seath	373 Hickey Cog.
Carol Pled	1202-155 W. 151 St. NW 18
Jan Cook - Cook	424 Glenbrook Dr. N. West V5L5T5
Carol Cook	424 Glenbrook Dr.
MITCH YOSHIZAWA	427 GLENBROOK DRIVE NW
Namika Yoshizawa	427 Glenbrook Drive N.W.
Mare Yoshizawa	427 Glenbrook Dr NW
Coran Enos	1171 Mellis Dr. Richmond
DEBORAH KOYANAGI	1131 CARAVEL CRT RICH

(12)

(13)

Steveston Japanese Fishermen's Hospital Complex Preservation Project

A group of keen Steveston heritage enthusiasts, who are the descendants of pioneering Japanese Fishermen have garnered community and financial support to relocate and restore the Doctors' Administration Office, which was part of the original hospital complex. This historic building was built by the Steveston Japanese Fishermen's Benevolent Society, circa 1900.

The undersigned support the preservation of this, the most historical heritage building remaining in the Steveston/Richmond area. Its relocation to the Steveston Museum Site, will be with minimal environmental disruption leaving substantial open and green space on the site intact.

Name	Address
DON TABATA	✓ 4871 HERMITAGE DR
David Bell	✓ 36 4151 Agmt St.
BOBBY DOU	✓ 815-8751 General Currie Rd
BRUCE KAWANAGI	✓ 11900 OSPREY DR
Allen [unclear]	11273 Glenbrook Place
ANDY OHARA	3251 Broadway St.
Chai's Aoki	1102-1723 Alberni St
BRIAN MORISHITA	3155 GEORGIA ST RICH
BRIAN GREENE	10631 Aintree Cr RICH.
ROB LANG	2091 WASHINGTON CRES
DENIS SAVOIE	12331 PHOENIX DR RICH
JOHN KIRKTON	9174 STOV. HILLY RICH
[unclear]	17688 96 BUE BETHA

(13)

Steveston Japanese Fishermen's Hospital Complex Preservation Project

A group of keen Steveston heritage enthusiasts, who are the descendants of pioneering Japanese Fishermen have garnered community and financial support to relocate and restore the Doctors' Administration Office, which was part of the original hospital complex. This historic building was built by the Steveston Japanese Fishermen's Benevolent Society, circa 1900.

The undersigned support the preservation of this, the most historical heritage building remaining in the Steveston/Richmond area. Its relocation to the Steveston Museum Site, will be with minimal environmental disruption leaving substantial open and green space on the site intact.

Name	Address
J. Guthrie	604-1599 W. 71 st Ave
M. Vijay Krishnan	604 -1599 W 71 Ave.
[unclear]	4851 Bonaville Drive Rmd Richmond
S. Sutherland	10077 Lawson Dr. Rmd.
Maria Inoue	9280 CHAPMOND CRES RICH BC
[unclear]	10460 SPRINGHILL CRES. RICHMOND.
Emily Webb	10460 Springhill CRES
[unclear]	"
Karen Shigeno	9280 Chapmond CRES.
Nancy Nomura	7491 ANVIL CRES RICH
MIKKI NOMURA	" "
CHRISTY NOMURA	" "

(13)

Steveston Japanese Fishermen's Hospital Complex Preservation Project

A group of keen Steveston heritage enthusiasts, who are the descendants of pioneering Japanese Fishermen have garnered community and financial support to relocate and restore the Doctors' Administration Office, which was part of the original hospital complex. This historic building was built by the Steveston Japanese Fishermen's Benevolent Society, circa 1900.

The undersigned support the preservation of this, the most historical heritage building remaining in the Steveston/Richmond area. Its relocation to the Steveston Museum Site, will be with minimal environmental disruption leaving substantial open and green space on the site intact.

Name	Address	PHONE NUMBER
Cambie Pearson	604-767-6821 #41-11391 7th Ave. Richmond	
Gail Schofield	604-952-5252 4505 61 STREET KAMBER BC	
Rosemary Keelan	604-943-1189 116-601st St Delta BC	
Marene MacDuncan	604-278-8649 V1E 2X6 4375 Peterson Rd Richmond	
Alisa Magnan	10300 4th Ave Richmond BC	
Angela Cochling	6-7800 Heather St. Rmd.	
Jane Farrell	6-7800 HEATHER ST., RMD.	
CHUCK FUKUDA	8720 RESERVALE RD RMD	
Jeff Ecké	12219 BOUNDARY DRIVE SOUTH SURREY	
Don Herd	3472 OXFORD ST. VANCOUVER	
BRAD JACKSON	#112-12633 #2RD, RICHMOND, BC	
Jessica West	17040 FERGUSON RD. Richmond BC V6V 1C7	
Jason Newton	#137 16275 15 AVE Surrey BC V4A 1L4	

111

13

Steveston Japanese Fishermen's Hospital Complex Preservation Project

Name	Address
Liana Bollo Lella	46-11291 7th Avenue, Richmond BC V7E 3J5
John Van Meek	423-12639 N. 2 RD Rich.
SACHI YAMADA Sachi Yamada	10280 Blundell Rd. Rich.
JOHN MORE	53-5531 CORNWALL DR. RICH.
Jim Lubron	4555 ARBOR DR. LADDER
Carmen Barcikis	10840 Hogarth Dr. Richmond.
Kerry Cumley	12931 PHOENIX DR Pined
Dawn Boeris	11511 Seabel Road Richmond BC
A.B. Blinkhorn	7480 Chelsea Rd. Richmond BC
AKI MIYATAI Akiyuki	2449 Upland Dr. VAN. B.C.
Richard Omori	11360 SCHOONER CRT RICHMOND V7E 4L1
Marta Kerlecek	6156-7471 Murray Richmond
KINUYO AKIZUICI	3271 BLUNDELL RD. V7C 1G5
BRIAN McMAHON	8791 Allison St. Rmd. V6Y 3H9
LAUREN McMAHON	8791 Allison St. Rmd. V6Y 3H9
STANLEY MISA	5840 WALLACE RD V7E 2G5
MATSUYAMA, MAE	3771 HUNT ST RICH
" MICHIKO	" "
" SANDRA	" "

19

Steveston Japanese Fishermen's Hospital Complex Preservation Project

A group of keen Steveston heritage enthusiasts, who are the descendants of pioneering Japanese Fishermen have garnered community and financial support to relocate and restore the Doctors' Administration Office, which was part of the original hospital complex. This historic building was built by the Steveston Japanese Fishermen's Benevolent Society, circa 1900.

The undersigned support the preservation of this, the most historical heritage building remaining in the Steveston/Richmond area. Its relocation to the Steveston Museum Site, will be with minimal environmental disruption leaving substantial open and green space on the site intact.

Name	Address
John Obayashi	11251 6 th Ave, Rmd. BC.
Jeff Obayashi	2512 McBride Cres, Prince George, BC
Winnie Chan	632 48 ^R Ave., Vancouver, B.C.
Richard Obayashi	11251 6 th Ave, Rmd, BC
Justin Oldham	#35-4800 Trimmer Dr. Rmd.
Lorraine Lemeshkin	35-4800 Trimmer Dr, Richmond BC.
Jennifer Lee	3-17097 64 th Ave Surrey BC
Hugh Chad	6760 GOLF SMITH DR RICHMOND
DAVE KOBAYASHI	131 W. 43 AVE, VANCOUVER, BC V5Y 2T6
DARRYL OMAE	12106 POUNDWATER DRIVE SOUTH SURREY V3X 2B7
BEV KOBAYASHI	131 W. 43RD AVE VANCOUVER
RITA IMAI	1408 SUMAS ST BURNABY V5D 2T9

(12)

Steveston Japanese Fishermen's Hospital Complex Preservation Project

A group of keen Steveston heritage enthusiasts, who are the descendants of pioneering Japanese Fishermen have garnered community and financial support to relocate and restore the Doctors' Administration Office, which was part of the original hospital complex. This historic building was built by the Steveston Japanese Fishermen's Benevolent Society, circa 1900.

The undersigned support the preservation of this, the most historical heritage building remaining in the Steveston/Richmond area. Its relocation to the Steveston Museum Site, will be with minimal environmental disruption leaving substantial open and green space on the site intact.

Name	Address
James Mori	9720 SWANSEA DR
Mae Mori	9720 SWANSEA DR
Alex	102-1622 Vine St., Vancouver
James Mori	3-17097 64 th Ave, Surrey
May Richard	6266 Reki's Ave. Rmd.
Patrick S. Osheo	6266 Reki's Ave. Rmd.
Sharon Flynn	#3-4771 Garry St Rmd.
Bob Flynn	4771 Garry St Rmd.
Vivian Omori	11360 SEHOOPER CRT. RMD.
LAURIE SHIMIZU	3944 Regent St. Rmd.
Lena Oliveira	4070 Sefton St. Pt. Augustham
VICTOR SHIMIZU	3944 REGENT ST RMD.

(13)

32

Steveston Japanese Fishermen's Hospital Complex Preservation Project

A group of keen Steveston heritage enthusiasts, who are the descendants of pioneering Japanese Fishermen have garnered community and financial support to relocate and restore the Doctors/Administration Office, which was part of the original hospital complex. This historic building was built by the Steveston Japanese Fishermen's Benevolent Society, circa 1900.

The undersigned support the preservation of this, the most historical heritage building remaining in the Steveston/Richmond area. Its relocation to the Steveston Museum Site, will be with minimal environmental disruption leaving substantial open and green space on the site intact.

Name	Address
MASAMI HIRANO	3531 FRANKS RD RMD
TAKASHI HAMATAKE	1115 E 55th Ave, Vanc.
Kaito Mamiya	2742 ESS rd, Van.
Miyumi Hamatake	1115 E 55th
FRANK HAMANISHI	4708 WESLOWAN DR RICH
D. T. Hamamata	3637 E 48th VAN
M. Iyayaki	4241 SE Marine Bldg
P. Ueda	2750 ROSS RD RMD
S. Ueyama	#604-7995 Westminster Hwy rich.
D. Oshii	10540 ST. JOHNS PL RICH.
R. Wakita	3430 VALE COURT NORTH VANCOUVER
S. WAKITA	3430 Vale Crt. N.VAN
Shin Aoba	8151 SPIRES RD RICH
H. MIZUTA	170 W 43rd AVE VAN

33

Steveston Japanese Fishermen's Hospital Complex Preservation Project

A group of keen Steveston heritage enthusiasts, who are the descendants of pioneering Japanese Fishermen have garnered community and financial support to relocate and restore the Doctors/Administration Office, which was part of the original hospital complex. This historic building was built by the Steveston Japanese Fishermen's Benevolent Society, circa 1900.

The undersigned support the preservation of this, the most historical heritage building remaining in the Steveston/Richmond area. Its relocation to the Steveston Museum Site, will be with minimal environmental disruption leaving substantial open and green space on the site intact.

Name	Address
ART ROSS	704 719 PRINCESS ST N.WEST
TOBO KAWAMOTO	3080 PLEASANT ST RMD.
HIROKO KAWAMOTO	3060 PLEASANT ST RMD
KIKUE OSAKA	3080 PLEASANT ST RMD
CLORY OSEKI	8100 ROSEBANK CR RMD
KIMIKO OSEKI	8160 GILBERT RD RMD
TODD OSEKI	8100 ROSEBANK CR RMD
LANA CAVAZZI	#4 13028 #2 RD RMD
CORY CAVAZZI	#4 13028 #2 RD. RMD
Keiko Toyofuku	#603 7535 Alderbridge way Rmd.
ROSS PRESTON	87-5900 FERRY RD. DELTA
D. KODAMA	6800 Mapleflower Dr. RMD

113


32

33

(14)

(12)

Steveston Japanese Fishermen's Hospital
Complex Preservation Project

Name	Address
Karen Thomas	12258 Agave St. Surrey, BC V4A 4C2 (Born + Raised in Richmond - 60 yrs)
Noniko Shinagawa	3100 Rideau Place Richmond, BC. V7A 4P3
GORDON STEWART	4510 FRASERSIDE DR. RICHMOND, BC V6V 2L7
Jim MacPherson	7376 Angus Drive Vancouver, B.C.
Sonia de Souza	10071 Granville Ave Richmond B.C. V6V 1R5
JEFF PRICE (JENNIFER)	10440 WHISTLER PL RICHMOND BC V7E 4C5
Brent Lavallee	11059 64th Ave Delta, B.C. Canada V4E 1C3
Rick Rudolph	#152-6875-121 ST STREET SURREY, BC. V3W 1C2
MARILYN DOAN	12562-25A Ave. Surrey BC V4A 9S2
GARRY DOAN	" " " "
Carolyn Price	10440 Whistler Pl. Richmond BC V7E 4C5
Aya Sachimoto	9340 McBurney Drive Richmond BC V6V 3C6
	3271 BLUNDELL RD RICHMOND, BC V7C-1G5
KINOKO AKIZUKI	3271 BLUNDELL RD RICHMOND BC V7C-1G5
CASEY AKIZUKI	3271 BLUNDELL RD RICHMOND BC V7C-1G5
AYAKO AKIZUKI	3271 BLUNDELL RD RICHMOND BC V7C-1G5
BONNIE SAKIYAMA	11740 7 TH AVE RICHMOND B.C. V7E 5S7
Jenny Beckmann	7111 Gabriola cres Richmond B.C. V7C 1W1
Theresa Vesensky-Beckmann	7111 Gabriola cres Richmond B.C. V7C 1W1

(19)

39

Steveston Japanese Fishermen's Hospital
Complex Preservation Project

A group of keen Steveston heritage enthusiasts, who are the descendants of pioneering Japanese Fishermen have garnered community and financial support to relocate and restore the Doctors'/Administration Office, which was part of the original hospital complex. This historic building was built by the Steveston Japanese Fishermen's Benevolent Society, circa 1900.

The undersigned support the preservation of this, the most historical heritage building remaining in the Steveston/Richmond area. Its relocation to the Steveston Museum Site, will be with minimal environmental disruption leaving substantial open and green space on the site intact.

Name	Address
TAMOTSU TERAMISHI	6335 ROSS ST. VANCOUVER BC
MICHIYO TERAMISHI	" " " "
N. HAYASHI	6838 STATION HILL DR VAN.
MITUYO HAMANISHI	3163 E 47 TH AVE
TERUMI YAMAMOTO	3493 BARMO RD AVE RICHMOND
FUMIKO YOSHIDA	11741 DUNFORD
F. UYEDA	3247 E. 52 ND AVE VAN BC
A. YOSHIKAWA	2248 E 48
A. HAWA	7170 #30 ANTRIM AVE FOURWAY BC
M. Hamanishi	3751 Broadway St.
S. Urata	4926 7A ave. Delta B.C.
S. Watanabe	9591 STEVESTON HWY RMD. BC. V4M 1R2

(20)

114

Steveston Japanese Fishermen's Hospital
Complex Preservation Project

Name	Address
AKEMI MIZUTA	170 - W 43 AVE VAN
Ariko Minato	6091 Willow St. VAN.
A. Morizawa	3851 Garry St. RICH
May Muraie	6670 St. Charles Pl. BEY
Chiyo Sonekimi	3720 Hunt St. VAN.
E. YAMAZAKI	116-10538-153 St. Sumner
Mrs. A. Kondo	8111 McBURNEY CRT RICH.
Michiko Urata	7360 CURTIS ST. BEY
M. YOSHIKAWA	2248 E 48 TH AVE VAN
Y. Uyeda	3247 E 52 ND AVE VAN
June Yamamoto	11390 Daly Pl. DELTA
K. MINAMATA	3637 E 48 TH AVE VAN
TAKEO MORISAWA	134 CENTENNIAL PARKWAY TSAN.
Noboru Hamada	10931 SPRINGMONT DR. RICH
ORAI FUJIKAWA	11786 FENTIMAN PLACE RICH
MINAKO FUJIKAWA	" "
HIRAKO MORISHITA	#206 - 3451 SPRINGFIELD RICH
Yasuo Nakano	4751 DUNFELL RD RICH
Mitsuko Nakano	" "

Steveston Japanese Fishermen's Hospital
Complex Preservation Project

A group of keen Steveston heritage enthusiasts, who are the descendants of pioneering Japanese Fishermen, have garnered community and financial support to relocate and restore the Doctor's Administration Office, which was part of the original hospital complex. This historic building was built by the Steveston Japanese Fishermen's Benevolent Society, circa 1900.

The undersigned support the preservation of this, the most historical heritage building remaining in the Steveston/Richmond area. Its relocation to the Steveston Museum Site, will be with minimal environmental disruption leaving substantial open and green space on the site intact.

Name	Address
Tom S.	152 - 8180 NO. 2 RD. VAN
TODD SHUBROOK	201-9800 GLENACRES DR
Billie Markman	34-4800 FURMAN DR. RICH.
Miguel Clemente	7011 Lindsay Rd.
Charles Wong	6220 Carlton Ave.
Cristal Jung	#34-5740 CONCORDIA RD
Leslie	57 3251 Blundell Rd.
J.C. McINNIS	8111 Lucas Rd (51 YRS)
DIANA PAVICH	5800 FRANCIS RD (RICHMOND)
IL TERAMURA	6851 Woodwards Rd
E. Collins	9171 DIAMOND RD RICH.
J. Maclester	227 Moffatt Rd RICH.
J. Smith	7-11491 Swell Ave RICH BC

115

20

20

95 (13)

**Steveston Japanese Fishermen's Hospital
Complex Preservation Project**

Name	Address
<i>Sylvia Nakamura</i>	6966 Donald Road
<i>Tyler Fong</i>	8500 Rideau Dr
<i>Vincent Sy</i>	7851 Belair St.
<i>Allyson</i>	8502 Rideau Dr
<i>Allyson</i>	8500 Rideau Dr
<i>Allyson</i>	5711 Ardenate Drive
<i>Allyson</i>	8251 GENERAL CURRIE RD
<i>Allyson</i>	7640 Montana Rd.
<i>Wickson</i>	5470 GRASSON RD
<i>Allyson</i>	6266 Rekis Ave.
<i>Allyson</i>	3180 Lamond Ave. RMD BC
<i>Allyson</i>	5451 Stodpicken Rd
<i>Allyson</i>	5208 Hollywood Dr RMD BC
<i>Allyson</i>	Lucas Rd Rmd.
GERRY NISHI	5740 GAMMET CT.
Michael Hills	4551 Britannia Dr
Allyson	4473 1986 Zangley.
Row Doronoff	6160 REEFER CREEK
TEKO KAMADA	11560 KINGFISHER RD. RMBE V7L3 4L6

**Steveston Japanese Fishermen's Hospital
Complex Preservation Project**

A group of keen Steveston heritage enthusiasts, who are the descendants of pioneering Japanese Fishermen have garnered community and financial support to relocate and restore the Doctors'/Administration Office, which was part of the original hospital complex. This historic building was built by the Steveston Japanese Fishermen's Benevolent Society, circa 1900.

The undersigned support the preservation of this, the most historical heritage building remaining in the Steveston/Richmond area. Its relocation to the Steveston Museum Site, will be with minimal environmental disruption leaving substantial open and green space on the site intact.

Name	Address
<i>SEAN LAWSON</i>	6463 Dyer Rd, RMD, BC
<i>DANA WESTERMARK</i>	13333 PRINCESS ST. Rmd.
<i>JANET URQUHART</i>	113-12871 RAILWAY, RMD
<i>PAUL DUMPHY</i>	12235 NO 1 ROAD RMD
<i>LYNN BIRCH</i>	UNN SACAR BOND 12235 No 1 Rd, RMD
<i>Juan Sobko</i>	12235 12255 No 1 Rd.
<i>Danko Dukarovic</i>	11824 WARREN PL DECTA
<i>Paul Parker</i>	1620 SILENT HILL CDR V3J4Y5
<i>Jim Blouchner</i>	14842 Beachview Ave White Rock
<i>Jagdeo J Gill</i>	4860 Malton Rd RMD
<i>Dt J</i>	26953 Alder St
<i>Norm Ferguson A. Jey</i>	6461 Dyke Rd, RMD.

Steveston Japanese Fishermen's Hospital
Complex Preservation Project

Name	Address
YOSHITSUGU ANZAI	RR#11 1680-168 ST SURREY
KYOKO ANZAI	" "
YOSHIO ARAI	2487 W 23 AVE VAN
MICHIKO ASAOKA	7185 COLLISTER AVE. BEY
FUJIKO EGAMI	#608-518 W 14 AVE VAN
TOSHIMI GOTO	126 Spruce Rd N.W.
Amy Hama	#30-7170 ANTRIM AVE BEY
HARUYE HORI	12291 EWEN AVE RICH
Takashi Ichida	1828 HEATHER ST POCO
Asako Ichida	" "
SHIKO KUNO	364 E 17 TH AVE VAN
TOSHIO KUNO	3695 E 27 AVE VAN
KEIKO KUNO	" "
SACHIKO MAEDA	5260 MONCTON RICH
STACY MAEDA	5511 MONCTON RICH
CHERYL MAEDA	" "
TAKAO YAMANAKA	3895 BROADWAY ST RICH
MIYOKO YAMANAKA	" "
JOJI YAMASAKI	4711 DUNFELL RD RICH
YOKO YAMASAKI	" "

Steveston Japanese Fishermen's Hospital
Complex Preservation Project

A group of keen Steveston heritage enthusiasts, who are the descendants of pioneering Japanese Fishermen have garnered community and financial support to relocate and restore the Doctors' Administration Office, which was part of the original hospital complex. This historic building was built by the Steveston Japanese Fishermen's Benevolent Society, circa 1900.

The undersigned support the preservation of this, the most historical heritage building remaining in the Steveston/Richmond area. Its relocation to the Steveston Museum Site, will be with minimal environmental disruption leaving substantial open and green space on the site intact.

Name	Address
NEIL MATSUD	8100 OSGOODE DR RICHMOND
DIANE MATSUD	8100 OSGOODE DR R10
ROSANNA TAN	8120 OSGOODE DR RICH
FRED. TAN, K.B.	8120 OSGOODE DR R10
Cynthia Tan	8120 Osgoode Road
Corey Matsuo	222-4280 Huxton St. Lund
Akiko Matsuo	11480 Blundell RD Rmd.
Ken MATSUD	11480 BLUNDELL ROAD RICHMOND
Shelly Matsuo	11480 Blundell Rd RICH
Helen Walske	9640 ADWILLA RD RICH BC
Janiette Muroo	11951 Oprey Dr. R. d.
Dave Matsuo	8251 ELSHORE RD. RICH.

117

20

31

Steveston Japanese Fishermen's Hospital Complex Preservation Project

A group of keen Steveston heritage enthusiasts, who are the descendants of pioneering Japanese Fishermen have garnered community and financial support to relocate and restore the Doctors'/Administration Office, which was part of the original hospital complex. This historic building was built by the Steveston Japanese Fishermen's Benevolent Society, circa 1900.

The undersigned support the preservation of this, the most historical heritage building remaining in the Steveston/Richmond area. Its relocation to the Steveston Museum Site, will be with minimal environmental disruption leaving substantial open and green space on the site intact.

Name	Address
* (2) Rob and Michelle Johnston	1151 Railway Avenue Richmond V7E 6P1
* (2) Peter + Lorraine Pavlicevic	6451 Clematis Drive Richmond V7C 2J7
Basil Black	13551 628 Ave Surrey BC (Richmond Richmond) V2X 3R8
Shelley Black	13551 628 Ave Surrey BC (Richmond Richmond) V2X 3R8
LIZ JOHNSTON	3360 BENTINCK PL., RICH. BC V7C 4H4
PW JOHNSTON	3360 BENTINCK PLACE RICHMOND BC V7C 4H4
Aileen Jait	9305-204 th St Langley, BC formerly Armanville Ave, Richmond
Reiji Miyawaki	4545 NANAIMO ST VAN
YAYOI MIYAWAKI	" "
MASATO NISHI	2203 E 46 th AVE VAN
ISAKO NISHI	" "
YACHIYO NISHI	2743 E 51 AVE VAN
(14)	

Steveston Japanese Fishermen's Hospital Complex Preservation Project

A group of keen Steveston heritage enthusiasts, who are the descendants of pioneering Japanese Fishermen have garnered community and financial support to relocate and restore the Doctors'/Administration Office, which was part of the original hospital complex. This historic building was built by the Steveston Japanese Fishermen's Benevolent Society, circa 1900.

The undersigned support the preservation of this, the most historical heritage building remaining in the Steveston/Richmond area. Its relocation to the Steveston Museum Site, will be with minimal environmental disruption leaving substantial open and green space on the site intact.

Name	Address
MARILYN SAKIYAMA	11740 7 th Ave KEND
Praci SAKIYAMA	3740 VULSTMORE RMD
J SAKIYAMA	6031 #1 RD RMD
A SAKIYAMA	4100 CHADWICK ST STEVESTON
I Hanson	15-11631 7 th Ave Rmd
A KOKUBO	3840 Youngmore RMD
N. SAKIYAMA	3277 RICHMOND ST. RMD
L. SAKIYAMA	3277 RICHMOND ST. RMD
SUEKO KIMURA	3211 BLUNDELL RMD
FRANK YU	6631 LIVINGSTONE PL. RICH
Lorraine McMahon	8791 Allison St. Rich
KEIKO TERASHITA	8220 ROSEBANK CRES RICH

(12)

39 Return mid JANUARY

Steveston Japanese Fishermen's Hospital
Complex Preservation Project

Name	Address
FUSAYO NAKAMURA	10580 SERRA L DR RICH
MANA NAKAMURA	" " RICH
FRANK HAMAMOTO	#317-8580 GENERAL CURRIE RICH
MIDORI HAMAMOTO	" " " "
KIICHI KUMAGAI	8091 ROSEBANK CRES RICH
MARY KUMAGAI	" " " "
HIDEKO NISHI	#204-5760 ANDREWS RD RICH
ISAO NISHI	4651 MONCTON ST RICH
KAYOKO NISHI	" " " "
KAZUMI NISHI	3586 GARRY RICH
CHIZUKO NISHI	" " " "
SETSUKO NISHI	#305-8760 BLUNDELL RICH

Steveston Japanese Fishermen's Hospital
Complex Preservation Project

A group of keen Steveston heritage enthusiasts, who are the descendants of pioneering Japanese Fishermen have garnered community and financial support to relocate and restore the Doctors/Administration Office, which was part of the original hospital complex. This historic building was built by the Steveston Japanese Fishermen's Benevolent Society, circa 1900.

The undersigned support the preservation of this, the most historical heritage building remaining in the Steveston/Richmond area. Its relocation to the Steveston Museum Site, will be with minimal environmental disruption leaving substantial open and green space on the site intact.

Name	Address
Jeff Stewart	702-9202 Home St. BBy V3D 4K2
W. A. A. A.	#460 Lancelot Drive V1C Rich 453
David Kumamoto	4200 Tucker Ave Richmond
SHANNON ISWITA	10251 BAMBERTON DR RICH
Mitsue Stevenson	18110 20th Ave Surrey V3R 9V8
Aya Miura	#403 828 Cardero St, Vancouver, V6G 2G5
Mitsuko Yamazawa	11260 Barkentine Place Richmond
Lisa Xu	11351 Caravel Court, Richmond.
JOHN HARADA	5795 Buckingham Ave BBy
SHIGERU HIRAI	912 CLARK DR Van
AREMI HIRAI	" " " "
RICHARD KANEKAWA	1403-1710 BAYSHORE DR VAN
SUE KANEKAWA	" " " "

119

(12)

40

(13)

Steveston Japanese Fishermen's Hospital Complex Preservation Project

A group of keen Steveston heritage enthusiasts, who are the descendants of pioneering Japanese Fishermen have garnered community and financial support to relocate and restore the Doctors' Administration Office, which was part of the original hospital complex. This historic building was built by the Steveston Japanese Fishermen's Benevolent Society, circa 1900.

The undersigned support the preservation of this, the most historical heritage building remaining in the Steveston/Richmond area. Its relocation to the Steveston Museum Site, will be with minimal environmental disruption leaving substantial open and green space on the site intact.

Name	Address
<i>Doyle-Macdonald</i>	3240 PLEASANT ST. 277-8420
<i>J. Hamada</i>	3240 PLEASANT ST 274-3003
<i>J. Hamada</i>	3240 PLEASANT ST 274-3003
<i>J. Kojima</i>	3600 PLEASANT ST 272-2965
<i>J. Adame</i>	11391 2nd AVE 275-3327
<i>Joann Tsunura</i>	3211 Garry Street Richmond 778-255-2695
<i>M. Tsunura</i>	3211 Garry Street 277-5258
THOMAS KOJAWAGI	11311 CARAVEL COURT
TSUYOSHI HAMADE	7251 BATES RD RICH
YOKO HAMADE	" "
<i>Jean Moucheta</i>	4409 W 5 TH AVE VAN.
ARTHUR NAITO	3451 W 12 TH AVE VAN

(12)

47

Steveston Japanese Fishermen's Hospital Complex Preservation Project

A group of keen Steveston heritage enthusiasts, who are the descendants of pioneering Japanese Fishermen have garnered community and financial support to relocate and restore the Doctors' Administration Office, which was part of the original hospital complex. This historic building was built by the Steveston Japanese Fishermen's Benevolent Society, circa 1900.

The undersigned support the preservation of this, the most historical heritage building remaining in the Steveston/Richmond area. Its relocation to the Steveston Museum Site, will be with minimal environmental disruption leaving substantial open and green space on the site intact.

Name	Address
TED HIROSE	10420 Williams Rd Richmond
MADE HIROSE	10420 Williams Rd Richmond
Kathy Yamada -	10500 ANAHIM DR RICHMOND
ANNE Motozono	#18 Admiral Way LANIER.
Carole Stevens	8411 Fairdeed Crescent, Richmond
BRIAN Hirose.	10211 Leonard Rd. RICHMOND.
Michelle Hirose	10211 Leonard Rd RICHMOND.
JOE ORTH.	10260 ANTRÉE CR RICHMOND
Valerie Orth	10260 Antrée Cr Richmond
DAVID HIROSE.	7325 112 St. Delta, B.C.
Jean Yetman	6320 Swift Ave RICHMOND
Pat Yetman	6370 SWIFT AVE RICHMOND
Craig Hirose	#33 5388 201A Ave Langley, B.C.

(13)

120

**Steveston Japanese Fishermen's Hospital
Complex Preservation Project**

Name	Address
ART HIROSE	8311 LUNEN RD. (274-6461) RMD.
CATHY HIROSE	" "
STEVEN HIROSE	" "
KEVIN HIROSE	" "
MITSUYO HAMANISHI	3163 E 47 TH AVE VAN
TOM MAKIKAWA	1354 E 59 TH AVE VAN
SADAKO MUKAI	11620 RAILWAY AVE RICH
MATSUE NAKANO	1101-1088 QUEBEC ST VAN
KENJI TANAMI	5760 SOPHIA ST VAN
SEIKO TANAMI	" "
SHIG. TAMAKI	2150 E 38 TH AVE VAN
MICHIKO TAMAKI	" "
YUTAKA TATEMOTO	3013 E 15 TH AVE VAN
MIKIO TAKEDA	3167 E 14 TH AVE VAN
AKIKO TAKAETI	2705 W 15 TH AVE VAN
WATARU TAI	4248 W 10 TH AVE VAN
FUMIARI UEDA	119 W 41 ST AVE VAN
SAYOMI UEDA	" "
TATSUYA YAMAZAKI	1588 W 49 TH AVE VAN
SADAYO YAMAZAKI	" "

**Steveston Japanese Fishermen's Hospital
Complex Preservation Project**

A group of keen Steveston heritage enthusiasts, who are the descendants of pioneering Japanese Fishermen have garnered community and financial support to relocate and restore the Doctors' Administration Office, which was part of the original hospital complex. This historic building was built by the Steveston Japanese Fishermen's Benevolent Society, circa 1900.

The undersigned support the preservation of this, the most historical heritage building remaining in the Steveston/Richmond area. Its relocation to the Steveston Museum Site, will be with minimal environmental disruption leaving substantial open and green space on the site intact.

Name	Address
Debra Amolce	5246 Turquoise Dr
Dennis Amolce	5246 Turquoise Dr
Doreen Amolce	5246 Turquoise Dr
Francis Amolce	5246 Turquoise Dr
Marnie Amolce	5246 Turquoise Dr
Barb & Sandy Wohl	5259 Turquoise Dr.
John Wohl	5282 Turquoise Drive.
Margaret Douglas	5251 Turquoise Drive
Stephen Douglas	5251 Turquoise Drive
Alton Kavan	5188 TURQUOISE DRIVE
Cermy Wohl	5179 Turquoise Drive.
By David Wohl	5180 Turquoise Dr.
Ann David	5199 Turquoise Dr.

Steveston Japanese Fishermen's Hospital
Complex Preservation Project

Name	Address
SUSAN KAWAYAKA	8471 ROBINSON RD
JK Laffac	6791 Juniper Drive
Ellen Macdonald	#305-8700 James Rd. #102
Jean Dumbello	4100 WATSON ST
Michi Kurita	#16 9651 Dayton Ave Richmond
Maurice "	"
Michael Tanaka	403-22 Cordova St. East Vancouver V6A 4G8
Yayoi Nagai	"
Paul Tanaka	14498 - 29 Ave Surrey, BC
Arlene Tanaka	"
Theresa Yesepsky-Beckmann	7711 GABRIOLA CRES RICHMOND, BC 297-1590 180 SP
Suey Dastoom	Surrey BC
Mikiko Shirai	6351 Clematis Dr. Richmond
Allison MacAllister	17093 60th Ave. Surrey, BC
Darren MacAllister	17093 60th Ave Surrey B.C.
Donna Allister	395 52 ST. DELTA BC
MARISA MACALLISTER	395 52 ST. DELTA BC
Donna Ingram	305-1830 W 8th Ave. Vancouver BC
J. Dumbello	529-11491 7th Ave Richmond BC

Steveston Japanese Fishermen's Hospital
Complex Preservation Project

Name	Address
PAUL McNEIL	4900 Pomeroy Ave.
Kenneth Bowers	24-2076 Telegraph Trail
TAMMY HALL	6781 Juniper Drive Richmond BC
GREG CLARK	#35-22000 SHARPE AVE. RICHMOND, B.C.
Joseph M. Mack	8791 ALISON ST. Rich. BC.
Tim Pearson	#41-11391 77th Ave. RICHMOND, B.C.
Loreni Greene	1437 55th St Delta BC
Mr & Mrs J. J. J.	5815 COW LANE RD DELTA BC
B. Olsen	10631 NO. 3 RD. RICHMOND
J. Tanaka	7571 Montrose Rd. Richmond

Steveston Japanese Fishermen's Hospital
Complex Preservation Project

Name	Address
TAK SHOJI	3134 E. 6 th AVE. VAN. B.C. VAN. BC
ART ONO	8211 STRAUSS DR VAN V5S 4H2
MARY TAGUCHI	1603 HALL AVE BBY. V6E 0A5
KAMORO TERANISHI	2861 E 43 AVE VAN BC V5R 2Z4
TERUO NISHI	3780 HUNT ST. RICH. V7E 2M3
ARIKO MAKAI	18411 GARRY ST RICH. V7E 2T9
K. OKAMOTO	7712 KERR ST VAN.
N. UYEHARA	4091 DEERFIELD CR. RICH
E. YAMAZAKI	116 10538 153 rd Surrey
SHOJI YAMAZAKI	116 10538 153 rd Surrey
② Mrs Mrs S. MORISHITA	4531 BAYVIEW ST RICH. V7E 2Z2
MRS KAZUO SAKATA	12080 - 15 th AVE. RICHMOND V7E 3Z9
② Mrs Mrs S. TANAKI	5763 DUMFRIES ST VAN V5P 2A3
② Mrs Mrs H. TABATA	9533 THOMAS DR RICHMOND V7E 5X7
② Mrs Mrs M. YAMANOBUKI	3571 GARRY ST. RICHMOND V7E 2T4
Pat Hamon	6888 SUSSEX AVE Burnaby W5J 2Z2
Mrs L. Ohtani	7360 CURIA ST B.B.Y V5A 1K1
Mrs K. Gaba	2657 E 47 th VAN V5S 1B9
Pat Hamon	4708 Westlawn Dr Bky

Steveston Japanese Fishermen's Hospital
Complex Preservation Project

Name	Address
MISAKO NISHI	3780 HUNT ST RICH.
M. Jani	9611 Palmer Rd Rich
Y. NISHIKIHAMA	3180 GEORGIA RICH
Shoko Murai	10740 St. John Pl. Rich
T. Nomura	10220 Buttermere Dr Rich
Keiko Shono	734 E 54 AVE VAN.
Tom S. OKABE	3791 BROADWAY ST. RICH
DON S. NARUKAMI	3720 HUNT RD RICH
JACK HAMA	216-8031 COLONIAL DR RICH
PEGGY TAKAHASHI	5580 MONCTON ST RICH.
SARIE NARIWA	111-4211 BAYVIEW ST. RICH.
YUJI. HAMAGUCHI	4266 FRANCES ST BBY
SUMIYE HAMAGUCHI	" "
EIKO MORISHITA	10-1245 PENDER ST. VAN
YASUHIKO NAKATA	4385 W 12 th AVE VAN
TOKIKO NAKATA	" "
EIJI UYEDA	3247 E 52 AVE VAN.
TOYOKO UEDE	2437 E 18 th AVE VAN.

Steveston Japanese Fishermen's Hospital
Complex Preservation Project

Name	Address
Arlene Abmer	6640 Goldsmith DR
Tom Leahy	6660 Goldsmith DR
Pat Leahy	6660 Goldsmith DR
William Lee	4754 Wesley Rd. Delta BC ^{V4M1M8}
Ken Marale	#113-7600 Mountain Rd. Richmond BC ^{V6Y3N1}
Terry Poirier	6880 CHATSWORTH RD. RICH.
DAVE BASI	7937 ELWELL ST. BBY, BC
DAVE PROTEAU	5671 WALLACE RD
Harriet Aleck	5671 Wallace Rd
SAM SIMONE	6531 DUNSBURY PL.
Alicia Morishita	3780 Lamond Ave.
Justin Morishita	3780 Lamond Ave.
PHILIP GARDNER	407 4664 St St. TSACUWASU
KEIKO HAMANISHI	7711 LAWRENCE DR BBY
YOSHIKO MUKUYAMA	105-8787 FREMLIN ST VAN
JIMMY NASU	5270 PARKLAWN DR BBY
RYOKO NASU	" " IT
TOSHIKO NASU	2975 E 43 AVE VAN
YUKIO NASU	2927 E 47 AVE VAN
HIROKO NASU	" " "

20

21

Steveston Japanese Fishermen's Hospital
Complex Preservation Project

Name	Address
W. NAIDU	6-8380 No. 2 Rd. Pmd, BC V7E 3M3
Wynne Bender	5863 John Woodwards Rd. Richmond BC ^{V7E 1E8}
Ken Blair	28599 ANDREWS RD. V7E 6V1
ROSS AKIZUKI	11960 KING FISHER DR V7E 3X6
LARRY OYE	3160 HUNT ST V7E 2L4
SCOTT STEWART	P.O. Box 39524 Richmond BC
Ron Belton	#37-301 Reekman Pl. RMD, BC
NORMAN KONDO	8111 MURNEY CRT. RMD, BC
Kenn Sencer	286-5600 Andrews Rd. Rmd, BC
Mimi Matsuo	206-4211 Bayview Street Rmd, BC
JEFF MATSUO	206-4911 Bayview St.
PAT CSHIRO	6266 Reki's Ave
CONRAD BRACH	307 8511 ACKROYD RD.
JIM HAMAGUCHI	314-5560 LYNAS LANE RICHMOND
R. COSTAN	11731 SEARLIFE RD.
Margaret Dudley	8166 CANTLEY RD.
Karen Cowling	8851 Scotchbrook Rd.
IAN FURUKAWA	4605 St. Andrew's Pl. Richmond
Hemako Furukawa	" " " "

19

124

Steveston Japanese Fishermen's Hospital
Complex Preservation Project

Name	Address
Amy Wei	9400 Mcintosh Pl Richmond B.C.
Cheryl Sakamoto	5960 Chatham St., Richmond, BC
KELSEY KOONTS	3274 D. 2ND ST. N. VAN
Kuni Haraguchi	29-11160 Kingsgrove Ave. Richmond, BC.
Kayoko Haraguchi	29-11160 Kingsgrove Ave. Rmd BC
HARUMI YAMANO	1146 LANSDOWNE DR COB. B.C
KAYAKO MIZUYABU	2337 E PENDER ST VAN.
SHINICHI NAKANO	10231 FINLAYSON DR RICH
LOUISE NAKANO	" "
SUMIKO NAKATA	#4 - 8411 SANDERS RD RICH
JOE SAITO	3800 PACEMORE AVE RICH
SAM SHINDE	6531 DUNSANY PL RICH
MASAKO SHIOZAKI	11060 - 4TH AVE RICH
TOMIYE SHIOZAKI	3944 REGENT ST RICH
MASAKO SHIYOJI	10875 SPRINGMONT GATE RICH
KENNY SHIYOJI	" "
SUMIE OYE	#1 - 8540 BLUNDELL RD RICH
YAEKO YAMAMOTO	11040 - 4TH AVE RICH

Steveston Japanese Fishermen's Hospital
Complex Preservation Project

Name	Address
JANE TRAINOR	6686 LONDON COORS DELTA V4K 4W7
CAROL BRILL	5440 JASKOW DRIVE RMD
BREVE BRILL	5440 JASKOW DRIVE RMD
JANE SHIRE	10440 HURSTON PL. RMD 7451 FRANCIS RD
ROU BUDAI	7451 FRANCIS RD RMD
MACHIKO BUDAI	7451 FRANCIS RD RMD
KAREN LIVINGSTON	5789 126 A ST SURREY BC V3Y 3H6
Naoko Sato	#1105, 7080 ST ALBANS PL Rmd.
Rosa Lumj	6086 GRANVILLE CR. RMD
Ken Bradley	4920 Grand Dr. Richmond BC
J.C. BAGERIS	9751 SAFFES RD RICHMOND B.C
B.N. McMAHON	8791 Allison St. Rmd. B.C.
KAZ SATO	#1105, 7080 ST. ALBANS RICHMOND B.C.
DAVE COVERTY	47B-139 ORAK ST.
BRENDA WONG	5340 WILLIAMS RD.
ED WONG	5340 WILLIAMS RD.
Hann Ruggen	10620 WESTMINSTER RD
STAN NISHI	5840 WALLACE RD RMD
HASASHI KIMURA	3211 BLUNDELL RD RMD

Steveston Japanese Fishermen's Hospital
Complex Preservation Project

Name	Address
AZUSA NAKA	5620 CATHAY RD RICHMOND B.C.
MANAMI NAKA	" V7C 3E2 604-275-9745
PHILIP ALEXANDER	#14-5740 GARRISON RD RMD.
Steven Brill	5440 Jaskow Dr. V7E-5Z2
KAZUMI MIYAJI	2449 Wp. LAND DR. VAN.
Dr. Laurie Pappas	864 - Herrington St. Coq V3C4B3
Jedediah Allen	864 - Herrington St. V3C4B3
Jerry Gilfillan	#119300 Parksville.
Debi Erickson	5260 Clifton Rd RMD.
Dale Takasaki	7611 Gabr. St. Cris. Rmd.
Waime Takasaki	7611 Gabr. St. Cris. Rmd.
Jim Brown	599 Tunstall, Bowen Island.
RICARDO CASTILLO	12110 BATH RD. RICHMOND V6V 2A6
KAZ Fukuda	2041 156A St. Surrey V3W 6S4
DAVE YAMAMOTO	3771 Bant-Lest. St Bby
Mitsunori Takeuchi	11340 7th AVE RMD
Yoriko Takeuchi	11340 7th AVE RMD
Nancy Olson	#45-12110 Bath Rd Richmond
Nancy Rainard	6686 London Court V7A

(19)

Steveston Japanese Fishermen's Hospital
Complex Preservation Project

Name	Address
HITOSHI YAMAMOTO	9731 SWANSEA DR. RICHMOND
Taku Yamamoto	4731 Swansea Dr. Richmond
Nao Yamamoto	9731 Swansea Drive Richmond
Shoko Yamamoto	9731 Swansea Drive Richmond
KUANG-YU HSIAO	4730 IRMIN ST. BURNABY
Champ CHANTHA PHASOUK	14686 109 Ave SURREY B.C.
SHIGEYOSHI OCHIAI	47-911 NOS RD, RICHMOND B.C.
NOBUKO OCHIAI	47-911 #5 RD Rmd B.C.
RICHARD LAU	4820 LARKSPUR AVE Rmd
TREVOR LOTTER	3642 ST THOMAS ST POCO.
CANNY CAI	4475 PETERSON DRIVE, RMD.
Giizo Udagawa	7874 Stanley St Burnaby
HARUE UDAGAWA	7874 STANLEY ST, BURNABY
David Lin	#8760 Roselea Pl. Richmond
JERVIN DENING	#8520 Granville Ave Richmond,
Yuchen Cheng	8840 Spires Rd. Richmond.
Toshi Minami	#308 - 8460 Ackroyd, Richmond
RITSUKO MUKAI	8600 General Currie Road RMD
Michiko Kondo	#203-2222 Prince Edward Vancouver

(19)

Steveston Japanese Fishermen's Hospital
Complex Preservation Project

Name	Address
KAZ SHINAGAWA	8100 Rideau Place Richmond B.C.
Moto Mukai	2125 BRIGADOON AVE. VAN
Mayumi Kawai	7629 Sussex Ave. Burnaby
Megumi Hiyama	802 3rd Ave. New Westminster
Kumi Arrano	1665 6 th Ave. Vancouver
KARI FALHARBEK	7707, ASH ST. VANCOUVER
CHRISTINE TANG	8091 RIDEAU PLACE, RMD
Patrick Tang	8091 Rideau Place Richmond
Jasper Tang	8091 Rideau Pl. Richmond
Kenichi Nakane	3039. ESTH AVE. Vancouver
Taki Shigaraki	1111 Lynn Valley Rd. N.V
Yoko Toth	#2-707 13 th St. New Westminster
MIKI SASAGAWA	3763 FOREST ST. BURNABY
AIKO NISHIRA	9320 Parkville Dr. Richmond
SHIRO YASUDA	904-1985 WOODWAY PL. BURNABY
KUNIAKI YAGI	695 COLWET ST. COQUITAN, B.C.
HIDEKAZU KIDO	6510 MCKENZIE DR. DELTA
TETSUHIRO HOSODA	#1004-4960 SANDERS ST BURNABY
YOSHIO SAHATA	301-1290 ALMA ST VANCOUVER
Masami OKADA	901-1111 Barclay St. Vancouver

Steveston Japanese Fishermen's Hospital
Complex Preservation Project

Name	Address
MR & MRS H. SAKAI	11551. KESTREL DR. P.M.D
MRS. M. KAWABATA	3825 HUNT ST. R.M.D.
MRS T NISHIKAWA	3180 GEORGIA ST. RICH
K. TANI	9611 PALMER RD. RICH.
MIYAKO-KOBAYASHI	306-1299 RAILWAY AVE RICH
Michiko Inaka	7877 Stanley St. Bby
C.H. SAKIMOTO	1842 W. 37 th AVE VAN
RITSU SAKIMOTO	1842 W. 37 th AVE. VAN.
Yusuke Inaka	7877 Stanley St. Bby
KAR & MRS Kenji TERADA	6731 Woodlark Rd. Richmond, B.C.
YUKIE KANIMURA	8271 No. 1 Rd. RMD
* S. H. OTSUKA	3351 The Crescent Vancouver
* MRS Ichiro MUTO	1570 East Woodstock Vancouver
Arata Nakae	2811 W. 3rd. Avenue Vancouver
Mie Nakae	" "
MAS YAMAMOTO	989 Hanford Place N. Van. V7A 2J8
Ki. Minato	46937 Quain Rd Chillum B.C. V3P 7H5
Y. Yamamoto	8520 Fairway Rd. Richmond
Junho Tsumi	7343 Vancouver St. V6P 2H6
Lilly Tamaha	" "

127

20

24

6

Steveston Japanese Fishermen's Hospital
Complex Preservation Project

Name	Address
M. Miyajima	4291 DEERFIELD CRES RICH
A. UYEMATA	" " "
SAYAKO YOSHIKAWA	372 E 58TH AVE VAN
M. Kuryama	5231 MONCTON ST RICH
E Hayashi	202-8700 Jones RD RICH
Sayoko Yoshikawa	372 E 58TH AVE VAN
Minon Ueta	1926-7A AVE TSANWASEN
KEIKO WADA	5812 DUMFRIES ST. VAN
JOJI YAMASAKI	4711 DUNFELL RD RMD
Y. HAMADE	7251 BATES RD RMD
AKIRA TAMURA	1071 CITADEL DR POZO
TEIKO TAMURA	" " "
NOBUO OHARA	#2-8080 BENNETT RD RICH
EIKO OHARA	" " "
MARY KONISHI	8091 SPIRES RD RICH
Richard Wada	#103-628 W 12TH AVE VAN
A. Tanaka	2317 Rupert St Van
A. Tanaka	" " "
C.M. HIRANO	3531 FRANCIS RD RMD

(19)

Steveston Japanese Fishermen's Hospital
Complex Preservation Project

Name	Address
A. HIGA	605-1914 Rossall
M. Cotton	6900 Minor Blvd
DE MARZIALI	2931 Haverman Rd, Abbotsford
John	1406-1200 Alberni St Vancouver
John	" " "
John	2931 Haverman Rd, Abbotsford
John	584 W 10th Ave Van Courer
Janet Shima	1947-63A Ave Surrey
Cornel deWetant	584 W 19 Ave Van BC
Doug Masuhara	4771 Webster Rd. Richmond
Sally Masuhara	4771 Webster Rd. Richmond
Mom Kono	32755 Nanaimo Cres Abbotsford
Ryo Ko Kono	32755 Nanaimo Cres Abbotsford
Wane Chow	4155 Westminster Ave
Aaron Yuen	71 Toxparz Richmond B.C.
Benedict Lim	4th ave Richmond B.C.
Masanobu Kikukawa	#100-15225 104th, Sunn B
Miyuki Kamisato	1315 Oakwood & N. Van B.C.
Tsuyoshi Kichikawa	#402-1180 PIACREE WAY COB B.C.

(19)

Steveston Japanese Fishermen's Hospital
Complex Preservation Project

Name	Address
K. Murai	669 1 Willow St. Vancouver V5Z 3S7
T. Kimura	8091 SPIRES RD RICHMOND
Yukiko Takahashi	#120 7995 WESTMINSTER HWY. R.C. B.C.
Doris Masuyoshi	3993 Spruce Bay
Ruby Okano	103-5790 PATTERSON BAY BC
T. Okada	3030 Lillooet St Van BC
F. Hamakawa	207-4390 Mudge St. BAY
I. Hamada	5191 Moncton St Rich
K. Hamada	" "
Emiko Hayashi	202-8700 JONES RD RICH
T. Murao	3371 PLEASANT ST RICH
K. Murao	" "
K.H. Nishi	5850 CLAREDON ST VAN
HISAYO NISHI	" "
Maria Teraguchi	5751 Moncton St Rich
Mary Konishi	8091 Spruce Rd Rich
S. Kondo	8111 MCBURNEY CRT. RICH
K. Kondo	" "
T. Hamada	7251 BATES RD RICH

Steveston Japanese Fishermen's Hospital
Complex Preservation Project

Name	Address
MICHIYO TSUJIMOTO	880 3rd St. West Vancouver V7T 2J3
RICARDO MASANA	880 3rd St. West Vancouver V7T 2J3
AKIKO MURPHY	4582 45A AVE Delta BC V4K 1M4
MASAKO MIYAGI	1850 LINCOLN AVE. Port Coquitlam, B.C. V3B-2J8
DAN ANTONSEN	1850 Lincoln Ave. Port Coquitlam, B.C. V3B-2J8
YOICHI NAKAMURA	11040 157 ST. SURREY B.C. V4N 4Y2
KAYOKO ASATO	113-8291 PARK RD RICHMOND BC V7Y 1T3
KIKOKO YASUDA	1208-9188 HEMLOCK DR. RICHMOND, B.C. V6S 4S7
HARUHIKO YAGAI	1010 KINGS AVE West Vancouver BC V7E 89
TOKO YAGAI	1010 Kings Ave W. Vancouver BC V7T 2R9
Masami Hanashiro	2037 Ferndale St Vancouver B.C. V5L 1Y2
Minako Minci	2182 E 33rd Ave VAN B.C. V7N 3G1
Hideki Arai	1122 HOUSEPL. COA. B.C. V3K 5V7
Asaka Kamimura	2080 East Kent Ave South Vancouver B.C.
Tabako Okuda	(906)-1265 Parkaby St. Vancouver BC
Seita Teruya	1894 East 41st Ave Vancouver.
KENYU NAKADOMARI	5500 GARRISON ROAD, RICHMOND, V7C 2M2

Steveston Japanese Fishermen's Hospital
Complex Preservation Project

Name	Address
E. Sakuyama	3271 Richmond St Richmond
Randy Takaki	3300 Broadway St Rich
Ben Nishi	608-125 th St Surrey BC
Don Komick	227 Bayne St New West
CHARLON IMAI	9151 Ryan Court RMD
LENNY TATEYAMA	1504-4900 FRANCIS RD.
Shelley Tateyama	1504-4900 Francis Road
Ron Shimizu	39-2727 E. Kent Ave N. Van.
Joe Murphy	3268 NORMAN DR. 458 1684 VAN.
P. Mathan	333 W 23rd St N. Van.
Low Linn	165 RIMOU DR N-BBY V6A2N7
Paul Galt	2170 153 AVE SURREY
S. G. Linn	12140 422 ave Rich.
Bo. Rourke	Suite 190 4930 EAST HASTINGS ST. SURREY
Bo. Rourke	3980 204 th Ave Langley
SAUZO HARA	10500 Southdale Rd Rich
Naomi Hara	" "
Jerry Koyanagi	#305-6745 STATION HILL BBY
Kazuko Koyanagi	" "

Steveston Japanese Fishermen's Hospital
Complex Preservation Project

Name	Address
Ed Lee	6211 Monteith Rd. Richmond
BUU CE	3027 E 29 th AVE V6A 1B1 C
JACQUE AGANTE	10500 SWINTON CO. RICHMOND BC
George Nakanishi	6986 Donald Rd. Rich. B.C.
DESTERAMURA	6851 WOODWARD ST RICHMOND, BC
AGRIERSON	9720 - GARDEN CITY RD. RICHMOND
LINDA NISHI	26-5820 DOVER DR. RICH.
Jennifer Adams	#12-3555 Westminister Hwy.
IRENE FAUCH	6391 COMSTOCK RD.
SALLY SLACK	691 YEATS CRES.
R. Hersten	9460 Parksville Dr. Rmd.
J. RANDALL	4082 CAWENDISH DR.
T. HIROSE	3671 SOLWAY DR.
J. CHUNG	5571 Clearwater Dr.
C. Lean	305 Colonial Drive
T. Marshall	11340 Williams Rd. Rmd.
K. Agnew	18151 65 Ave. Surrey B.C.
A. Eakin	2700 - ^{1st} Gilbert Road. Richmond BC
Gail McBride	15304 Victoria Ave W. Rich.

130

19

19

Steveston Japanese Fishermen's Hospital
Complex Preservation Project

Name	Address
Peter Adair	5660 Stefaniko Pl.
Bill Davey	10766 Bonaville Pl. Rm. D
Kelly Brown	#3-7120 Gilbert Rd. Rmd.
John Nixon	#3-7120 Gilbert Rd. Rmd.
Jennifer Nishi	8373 Ruskin Pl. RMD.
Pauline Teramachi	6851 Woodwards Rd. Rich. BC
NADYNE MONTGOMERY	4171 TUCKER AVE RICHMOND, B.C.
Jodi Pearce-Lee	6211 MONTETH RD, RICHMOND, BC.
Eric Lee	6211 Monteth Rd., Richmond B.C.
John	5920 Cormorant Crt. Richmond
Maria Kelader	12020 Imperial Dr
D. Tendo	9373 Hemlock Drive.
N. Shinde	3897 GARRY ST RMD
Debra DeWitt	3220 Brunel Dr.
Joanni Marshall	4904-12635 #202 RICH
Derrick Teramachi	412 15385 101 st Ave Surrey
COBY TERAMACHI	SURREY, BC
GARSON NEALE	9211 OFFSPRING CR.
Andrew Fuang	5671 Bernard Dr

Steveston Japanese Fishermen's Hospital
Complex Preservation Project

Name	Address
BRYSON DONALDSON	180-2000 MINOR BLVD
Doug Palyluk	8731 Rosehill Dr
Matthew Yoshitake	7140 Kimberley Dr.
YVONNE M. ROBINSON	11680 KINGEISHER DR
TOM ROBINSON	"
JASON ROBINSON	"
Tara Baker	57-9290 #2 RD Richmond BC
R. Beadle	5391 FRANCIS RD RMD.
Derek Hamada	5540 CENTRAL RD RICHMOND B.C.
Douglas Mukai	4100 Lancelot Drive
CHRISTINE HEMPHILL	4237 CRAIGFLOWER DRIVE
EILEEN ATAGI	8191 SPIRES RD
LOIS ATAGI	COOK RD.
Dennis Yano	10180 Lawson Dr., Richmond
Dave Higman	6931 DUNSMUIR PL, Richmond
LIAN MABATAN	#1403 4028 KNIGHT ST. VAN.
DAUG NEWSTEAD	#44-7740 ABERCROMBIE ST RICH.
Duncan Chan	12451 Greater Drive. Richmond
BROWN KENNEDY	20-6000 ROBSON BLVD, Richmond

Steveston Japanese Fishermen's Hospital
Complex Preservation Project

Name	Address
TAKESHI NISHIBATA	6265 Thompson Ave Coquitlam.
JACK HORADA	#104 - 10180 Ryan Rd RICH
TSUNEO MIKI	13812 HARPER RD SURREY
EVI MIKI	" "
Bill Nadigar	360 E 38 TH AVE VAN
JOSY NADIGAR	" "
FUMIKO YOSHIDA	11751 DUNFORD RD RICH
MISUZU YOSHIDA	3560 GARRY ST RICH
HYAKO YOKOTA	7140 WILLIAMS RD RICH
NOBORU YAMAMOTO	3851 RICHMOND ST RICH
NUIKO YAMAMOTO	" "
YONEHARU TANAKA	4731 DUNFELL RD RICH
EMIKO TANAKA	" "
FUSAKO TAKEUCHI	7611 AFTON DR RICH
S. MATSUMURA	3240 REGENT ST RICH
E. MATSUMURA	3900 RICHMOND ST RICH
SADATSUGU MATSUYAMA	3771 HUNT ST RICH
SANDRA MATSUYAMA	" "
MICHIKO MATSUYAMA	" "

19

Steveston Japanese Fishermen's Hospital
Complex Preservation Project

Name	Address
Michelle Matsuo	#222 4280 moncton st. PRD
Derek Orr	202 - 12639 No 2 rd PRD
Ruby Leptand	#2-9280 Glenavon Dr. PRD
Renail Leptand	#2-9280 Glenavon Dr. PRD
Lisa Egami	1620 Dansey Ave. Coq.
Adina Egami	1520 Dansey Ave. Coq.
M. M. J. J. J. J.	1334 Sunrise Dr. Parksville, B.C.
GREG ASAI	1520 DANSEY AVE, COQUITLAM
John Hayashi	1334 Sunrise Dr. Parksville, B.C.
Scott Morishita	5740 KITTAWALK DR RICHMOND B.C.
JEFF MATSUO	206-4211 Bayview St RICHMOND B.C.
Mimi Matsuo	206-4211 Bayview Street Richmond, B.C.
Mary Morishita	5740 KITTAWALK DR Richmond B.C. V7G 3H8
Steve Morishita	5740 KITTAWALK DR Richmond B.C. V7G 3H8
Amanda Li	#120-3671 Chatham St. Richmond, BC V7E 2B1
FANNY IP	8382 ELBURN RD Richmond B.C. V7C 2A1.
HISAO MATSUO	8251 ELBURN RD RICHMOND B.C. V7C 2A2.
Lorraine Matsuo	8251 Elburn Dr Richmond B.C. V7C 2A2
T. ISOMURA	5471 CALDERWOOD ST RICHMOND B.C. V7C 3G2

19

**Steveston Japanese Fishermen's Hospital
Complex Preservation Project**

Name	Address
Richard Horiuchi	2037 Fernside St. Van. V5L 1V2
SEIJI MINEL	2182 E 33rd AVE VAN BC V5N 3G1
Dillon Higa	3016 Waterloo St 19th
Sarah McLaughlin	2283 Nelson Ave -
Aileen Maynard	1218 Fulton Avenue
Hugh Kamisato	1315 Oakwood Cr. N. Van V9P1L5
Hitomi Okuma	3925 Southwood St. Bby. V5J2S5
Erina Miyagi	1160 pendrell st. Vancouver Apt 602 V6E1L5
Doug Suma	19077 63rd Ave. Surrey BC V3S2L8
Nicholas Okuma	1031 West 47th Ave
Kawabata	3820 Hunt St. Rand

**Steveston Japanese Fishermen's Hospital
Complex Preservation Project**

Name	Address
SEIJI SAKUMOTO	7782 SUNNYMEADOW RD B.C.
SEIJI SAKUMOTO	603-8081 WESTMINSTER BC
Stella Sakamoto	5193 Topaz Pl. RND, BC. V7C4Z3
MICHI SAKUMOTO	5193 TOPAZ PL. RND BC
Richard Horiuchi	2037 FERNDALE ST VAN.
GORDON MAYNARD	1218 FULTON AVE W. Van.
Theresa Godin	12-2485 Cornwall Ave, Van. V6C1B9
Jul C. King	1155 Chamber St Victoria.
Tom Biederman	320 Skinner St Victoria B.C. V8A5B4
Rudolf Jensen	456 26th St Langley BC.
Charles Van Volkingburgh	8653 207th Ave Langley BC.
SHAWN STOREY	1446 STEVEN DR. GWINN BC
Kyeongmi Oh	5500 Garrison Rd Richmond
Notie Shapland	45750 Alder Ave Chilliwack B.C.
Masa Okuma	3925 SOUTHWOOD ST BURNABY B.C.
MICHI SAKUMOTO	7304 27th AVE SE TUMULT WA 98208
Megumi Whetzel	2225 Rainier Ave, Everett, WA. 98201
Michelle Whetzel	6016 W Casino Rd Unit C 304 Everett WA 98204
Ryu Borovina	2521 Averson Blvd. Everett, WA, 98201
Kenki Nakadomari	5500 Garrison Rd

Richmond

133

11

15

20

Steveston Japanese Fishermen's Hospital
Complex Preservation Project

Name	Address
Ken Arai	7880 Broadmoor Blvd Richmond, BC
Amer Yip	7850 Broadmoor Blvd Rich. BC
Masako Iwanaga	1210-1700 EGLINTON AV EAST TORONTO ONT.
Yoshitaka Arai	705-6188 PATTERSON AVE BBY
Fumiko Arai	" "
BRAD BISHOP	1106 TUNEDO DR PORTMOODY
NORIKO BISHOP	" "
HISAE DOMAI	11820 DUNFORD RD RIGHT
HIROSHI HAMA	2229 HAWTHORNE AVE PO BOX
EIKO HAMA	" "
KENZO KASHIWAJI	#203-6677 Southcooks Cres BBY
Osie Matsuoka	#903-5652 Patterson Ave BBY
KENICHI NISHI	3565 RUPERT ST VAN
FUSAKO NISHI	" "
NADHARU NISHIHAMA	2579 E 8 TH AVE VAN
FUMIYO NISHIHAMA	" "
ROY TANAKA	3158 E 23 RD AVE VAN
ALICE TANAKA	" "
KADRU TANAKA	4416 ALBERT ST BBY
KAZUMI TANAKA	" "

20

16

Steveston Japanese Fishermen's Hospital
Complex Preservation Project

Name	Address
Tomo Shiraiwa	1905-5833 WILSON AVE V5H 4R3
Yuka Okamura	9304 114 ST North Delta
Masayo Otsuka	403 5-1-2 Kasugacho Toyonakashi Osaka
Yoko MURAKAMI	8223 BRYN LOR DR. BBY
Eri Nakano	156 W. 1st. St. N. Van
Noriko Shiroma	8438 Buller Ave Bby V5T 4T9
Kyoko Hinota	11900 Filamingo Court Richmond,
Sumiko Hagi	10580 Buttermer Rd. RICH
Keiko Parker	#2001-4388 Buchanan St, Burnaby
Azumi Nagai	2454 W 7 th Van
MORITAKA MATSUMOTO	305-5775 Hampton Pl. Vancouver
Katsuko Kodama	103-6677 Southcooks Cres Bby V5E 4H3
Noriko Tanaka	7891 Thornaby Cxs
Sachiko Hirano	1543 W. 59 TH AVE. VAN
Yukiko Tasuda	1490 E. 18th Ave Van
Yoko Joho	8275 E 20 TH AVE VAN
Nobuko Matsuy	7167 Canastota Dr. Van.
Kyoko Uehara	#501-621 W. 57th Ave-
Yoko Yanase	3852 W. 20th Ave. Van
TOSHIMI SAITO	4220 BLUNDELL Rd. RICHMOND.
TORIKO SAITO	40220 BLUNDELL RD. RICHMOND.

21

17

134

Steveston Japanese Fishermen's Hospital
Complex Preservation Project

Name	Address
Tana Mior	#58 6300 London Rd Rmd
Danny Mior	#58 6300 London Rd Rmd
Deuk Paterson	5071 MONCTON ST
Cheryl Anderson	4211 Annapolis Pl
Alan Sakai	11551 KESTREL DRIVE
Alanna Sabti	11551 KESTREL Drive
LUCY LEE	6471 PEARKE'S DR
SINATE	3500 STURSWAP AVE
BRENDA OUELLET	11731 FENTIMAN PL
Jill Deane	#25-12333 ENGLISH AVE
THELMA PARMENTER	7620 CHELSEA RD RMD

Steveston Japanese Fishermen's Hospital
Complex Preservation Project

Name	Address
M. TERAKISHI	1103-4398 BUCHANAN Bldg
J. Momotani	1376 chine cr Coquitlam
N. ISHIKAWA	2365 KING AVE COQUITLAM
T. NASU	11062 FRANCES ST Bldg
T. YAMAMOTO	3431 BARRHONDAVERICHMOND V7E 1A1
YUJI OHARA	8771 SEAFAR DR RICHMOND V7C 1X7
K. OHARA	8771 SEAFAR DR RICHMOND V7C 1X7
KANAKO OHARA	8771 SEAFAR DR RICHMOND V7C 1X7
Eiko OHARA	2-8680 BENNETT RD V6Y 1N5
NOBBY OHARA	2-8080 BENNETT RD V6Y 1N5
Kimiko Nakano	8775 JONES RD V6Y 3Y9
Jack Nakano	8775 JONES RD V6Y 3Y9
JACK HAMA	1104151-REGENT ST V7G 4S9
SUMIO FUJII	3500 - CUNNINGHAM DR RMD
TAKAKO FUJII	3500 - CUNNINGHAM DR RMD

135

(11)

18

(15)

19

Steveston Japanese Fishermen's Hospital
Complex Preservation Project

Name	Address
IVAN LUT	4274 PETERSON DR. RICHMOND B.C.
GARY OSEKI	8100 ROSEMAURICE RMD
HEIDI MOCOWAT	81071 Moulbray Rd Rmd
Larry Tanaka	85 West 21st Ave. Vancouver B.C.
Michael Jacobi	13155 ORCHARDWOOD PLACE RICH
Michael Price	5375 44th Ave Delta BC
Al. Huculan	9891 Berry Rd.
Kili S	4988 Chapman Rd V1V 2R4
Peter Pavlicevic	6451 CLEMATIS DR. RMD.
Maureen Hante	#316-8677 Hudson St Van BC
Atsuhiko Kondo	#302-14100 Riverport Way Richmond BC V6W 1E3
Orinawa Kondo	#302-14100 Riverport Way Richmond BC V6W 1E3
GREG CLARK	#35-22000 STARPE AVE RICHMOND, BC
SALINA HUDDA	9436 Kingsley Crs., Richmond.
JC Chen	6200 WOODWARD ROAD, RICHMOND
A. S. Sanner	3717 Banting Pl., B by (former Steveston track)
Fujiaki Nomura	5885 64th St. Delta, B.C.
AKIRA TSUNITA	10251 BAMBERTON DR. RICHMOND, BC V9A 1K6
Darlene Tanaka	7630 McKay Ave, Burnaby B.C. V5J 3T1

(19)

20.

Steveston Japanese Fishermen's Hospital
Complex Preservation Project

Name	Address
Trejar Jones	7630 McKay Ave, Burnaby
Trina Graham	6180 Strathcona Rd, Rich
Conkie Snow	8771 Ash St. Richmond. Born in Richmond
Afred Dunn	3758 OXFORD ST RICH
Pauline Ferguson	6461 Duke Rd. Richmond.
R. Lott	11422 75th Ave Delta BC
Ch. Kondo	302-14100 Riverport Way, Richmond B
J. Kooze	7540 MONTANA RD RICHMOND
John Coulter	4460 LANCET DRIV, RICHMOND.
Margaret Cheverton	15822 Suffolk Rd. White Rock.
Cherrie	" " "
BRIAN F AVERY	#30-11100 RAILWAY AVE RMD.
Phyllis Alexander	14-5740 Garrison Rd Rmd.
BEN WONG-MOON	3111 WILLIAMS RD.
Shirley Avery	#30-11100 Railway Ave Rmd.
Gregory Miller	1525-1077 Main St Delta BC 6351 Clematis Dr Richmond, B.C. V7C 1T7
Ryugo Shirai	7031 Westm. Gistay Hwy Richmond B.C.
Monty-MAN, KIM	
Bonnie Squid	5260 CLIFTON RD. RICHMOND, B.C. V7C 3B9

(19)

196

20

Steveston Japanese Fishermen's Hospital
Complex Preservation Project

Name	Address
Naomi Hara, <i>Zumi Ann</i>	10500 Southdale RD. Richmond
Albert Hom <i>Albert Hom</i>	406-8760 Westminster Hwy.
Linda Hom <i>L. Hom</i>	406-8760 Westminster Hwy.
YOSHI ANZAI	1680-168 ST. SURREY
SHUICHI HARADA	1126-50 th ST DELTA
SHINICHI SUEYOSHI	2400 No 4 Rd. Richmond
GENTARO SHIMIZU	4921 WOODSIDE DR St Burnaby
AKIKO TAMURA	1071 CITADEL DR. P. Cox
Hugh Kamisato	1315 Oakwood CR N. Van
TSUTOMU SHIRAHAMA	7269 EDWOR ^{CR} BAY WATSON
YUKI Morimoto	5827 Inverness St. Van CR ^{CR}
YUSUKE INAOKA	7877 STANLEY ^{CR} BAY VSEIN 7
SAM. M. OYAMA	3011 EAST 29TH VAN CR ^{CR} 109
HIROAKI MIKASA	17590 KENNEDY RD. PITT MEADOWS B.C. CR ^{VST} B181
Hideki Arai	1122 HOWSE PL. COX B.C. V3K5V7
YOSHIO UENO	4844 PENWIL ST. BAY CR ^{CR} 206
JOHN KUSUMOTO	1378 W. Wood WOOD PL. N. VAN.
Hironori KAMOSHITA	10515-157 th St. Surrey B.C. V1M 2H5
OSAMI USUBA	104-3638 Rae Ave

Steveston Japanese Fishermen's Hospital
Complex Preservation Project

Name	Address
BRIAN OUNSTED	854 ASH ST RICHM
CATHERINE BAREKIS	9751 BATES RD RIND
FUMINA TAKEUCHI	11340-7 th AVE RIND
YUKINA TAKEUCHI	11340-7 th AVE RIND
Bob Luey	6084 GRANVILLE AVE RIND
MARIE T. LUCCA	5700 ANDREWS ROAD. RIND
NORIKO KUMAGAI	11560 KINGFISHER RIND
TODD KUMAGAI	11560 KINGFISHER RIND
Karin Kumagai	8091 Raehamk crescent.
<i>Ch. Koyama</i>	10440 REYNOLDS DRIVE RIND
<i>Konomi Kellan</i>	116 166 th ST Delta
Rae Pearson	#41-11391 7 th AVE, RIND
Jim. Pearson	#41-11391 7 th AVE, RIND
JOSEF KAUENEGGER	8471 ROBINSON RD. RICHM.
JAY SQUELCH	5260 CURTAIN ROAD
KIM BOSKOV	6791 Juniper. Dr. Richmond, B.C.
Sandra Gertz	5691 Cornwall Pl. Richmond
BEIHO TANAKA	7580 SUNNIBANK AVE. RIND B.C.
Kiera Trainor	6686 London crt. Delta
Amy Yu	6631 LIVINGSTONE PL. RICH. B.C.

19

20

137

Steveston Japanese Fishermen's Hospital
Complex Preservation Project

Name	Address
GEORGE MUKAI	24-57 1/2 GARRISON RD, RICHMOND, B.C.
Tein TANAKA	7923-119A ST., DELTA
LEANNE TANAKA	
KATIE	
Yoshihiko	14442 90 th Ave. Surrey
April Bedomann	7111 Gabriola Cres Richmond B.C.
Leo Hirose	10420 Williams Rd
SUSAN KIMURA	10220 RYAN ROAD RMD.
KEVIN	3211 BLUNDELL RD RMD
KUMI	"
LEAH	"
Mao Mizuk	5840 WATKIN RD RICHMOND B.C.
HIROSHI HAMADA	#176 - 9100 FERNDALE RD RMD
ZANDRA CHEN	3A-4800 BLAIR DR RMD. BC
AKIRA UCHIDA	6038 180 th St. Surrey, B.C. V3S 5W5
HIROKO Uchida	6038 180 th St Surrey, B.C. V3S 5W5
SACHIKO NAKA	5620 CATHAY RD RICHMOND BC
KOSAKU NAKA	" 604-275-9745
YUKARI NAKA	"

Steveston Japanese Fishermen's Hospital
Complex Preservation Project

Name	Address
CHERRY ANDERSON	24211 Annapolis Pl.
IRIS KUBO	11920 Flamingo Court
Carole Sauro	Cardi Saw
S. Kawan	Y. Mur
Petronia Duffish	12411 Trike Red Leaf
Lynda Duffish	"
Tr. Muffish	"
Francis Duffish	Burtony, Red
Na Womei	" "
Brook Brook Ellison	3011 Pleasant St.
Adil Bhatnara	11680 Plone, Dy
Jamie Gullone	15-6380 Lombard Rd.
Barbara Mathon	4615 61 ST
Shelley Mikala	5600 Barnard pl.
Greg Noble	"
Stacey Matson	4615 61 ST
Jennifer May	3031 #7 RD
Kristina May	2011 #7 RD
Fam Begg	2531 #7 RD

(19)

(19)

Steveston Japanese Fishermen's Hospital
Complex Preservation Project

Name	Address
MA G. SHIMIZU	4921 WOODSWORTH BAY BC
Tom Sakaine	4209 W16th Ave Vancouver BC
HIROSHI KITASAKA	6532 COLBORNE AVE BAY B.C.
GEORGE INOUE	3563 LAKEWOOD ST VANCOUVER B.C.
SADAYUKI WADA	5812 DUMERIES ST VAN
SUETSUGU ATAGI	2719 E 24 th AVE VAN
MISAE ATAGI	" "
RYUZO HAMADE	4735 LANARK ST VAN
KIKUYO HAMADE	" "
Miako Kasuya	2630 Juniper St Van
KIYOSHI MATSUBARA	#314-8139 121A ST SURREY
CHIYOKO MATSUBARA	" "
SHIZUKO MURAKAMI	5980 BUCHANAN BAY
DICK NAKATSU	6835 KERR VAN
KAZUKO NAKATSU	" "
TSUYAKO NODA	5016 ROSS ST VAN

Steveston Japanese Fishermen's Hospital
Complex Preservation Project

Name	Address
Suzumura	5080 Dundas St
Y. Nakato	#403-8100 Jones Rd, Richmond
N. Nakato	#403-8100 Jones Rd, Richmond
HAYATO UEDA	7289 NOKAN AVE BAY B.C.
Miky Ozeki	#817-2268 W. Broadway, VANCOUVER, B.C.
Yoko Ozeki	1198 Du Chesne Arcane, West Vancouver, BC
Kazuko MITO	705-225 BILLY 80 VICTORIA, B.C. V8V 4T9
Norwai Mito	271 Superior Street Victoria BC V8V 4T1
Tadao Ozeki	1198 DUCHESS AVE, WEST VAN, B.C. V7T 1H2

Steveston Japanese Fishermen's Hospital
Complex Preservation Project

Name	Address
Allison Knowlton	7383 Capistrano Dr Burnaby V5A0P7
Linda Hillier L	309 E 8 th Ave New Westminster U3C 6K5
H. McCARREY	9180 Francis Rd Burnaby V6Y 1B1
Dave Allen	23611 Dawdney Trunk Road Maple Ridge V4R 2W9
Alan Harbour	6558 45B Ave Delta BC V4K 4T6
SALLY GEORGE LIN	3-10177 PUGWASH PL RMD V7E5N9
S Ukpabi	6653 Kendale W Bly
Richard Nava	10520 Lasson Rd Richmond V7E 2C3
Jeff Hanley	11731 Second Ave, Richmond V7E 3C2
MURIA KOTACANT	10962 Jang Cr. SRY. V3R 5B4
N. Colant	4831-53rd Ave. V4K 2Z3
Shelley Aven	10602 Standley Ave, Richmond V7B 1H5
Shana Chung	150 E-16th Ave VAN V5T 2T2
Debby Tom	2851 E 22nd Ave. VAN V5M 2Y1
Karen Warren	15,22,000 Sharpc Ave, Richmond V4V 2V5
Sam Umiid	970 NANTHRO ST VAN
Diane Derocke	8783 Delta Dr. Delta
EUGENIA KISZKO & KISZKO	101-1869 COMOKS, VAN, V6L 1R2
L CRONAN	15550 26th AVE., SURREY, BC

19

Steveston Japanese Fishermen's Hospital
Complex Preservation Project

Name	Address
Bernice Wang	6351 Livingstone Pl. Richmond BC V7C 5S6
H. Gill	16 W 61ST AVE VANCOUVER BC V5X 2B2
Joss Penon	#27 - 5700 JAMES CR. V7E 5A7
Michelle Wain	5500 Monks Bay Rd RMD V7E 2B7
Jeff Chang	7500 Bonaville Dr V7E 5E7
Jenn Lowes	9190 Kimberley Dr V7A 4S4
C. Mitchell	10944-78th Ave Delta
Richard Bond	#19-8120 General Corrie Rd. Richmond BC Canada
Jackie Asci	4831 TITAN Rd. Richmond BC V7C 1A6
Jeanie Sia	13131 105 Ave Surrey BC V3T 0A1
Kim Tregaskis	6663 Sherry Cres Delta BC
Jaymie Tiu	6833 Chatterton Rd Rmd. V7C 2Y6
Aly Jwa	8031 Ryan Rd, Rmd
Romika Sumra	9021 ATTENSMITH DR. Rich. BC V7A 4Y7
Smothery TO	40-7511 No. 4 Rd., RMD BC V6S 4W4
Tristan Caprio	5715 Topall Richmond
HELENA RUT-KOWSKI	208-7460 MITCHELL RD RMD
Shirley Cawne	11764 Kingsbridge Dr. Rmd
Brendan Campbell	1107-5133 Garden City Rd. RMD

19

Steveston Japanese Fishermen's Hospital
Complex Preservation Project

Name	Address
John KAWADA	7-5900 Noir DR.
See Richard	1120 2nd Ave
Terry Grant	#303 522 Ash St. New West
Heather Friday	6360 Azure Dr. Rich
Walter Lorette	370 Allsop Ave. Rmd
Herb Morishita	3780 Lamond Ave.
Darlene Pickman	4180 Parkside Richmond
Alex Hui	3540 Hunt St. Rmd.
J Greenblatt	6180 KAWAMUKA CRES RMD.
John Swales	6733 Louisa Jr. (Giff)
Alex Mackin	1402-651 Miura Rd
Betty Robertson	6662 London Lane Delta BC
Sue Robertson	6002 London Lane Delta BC
Rob Robertson	6662 London Lane Delta BC
Doug Rorer	14,419i Williams Rd. Rmd BC
Jackie Stirling	125-8220 #2 Rd, Richmond.
Doug Falyuk	8731 Rockhill Dr. Rmd BC
MARY HAMAKAWA	#302 - 5833 Wilson Ave 887
Jakao Mori	1001-1277 Nelson St VAN

Steveston Japanese Fishermen's Hospital
Complex Preservation Project

Name	Address
Justine Sanford	9280 Diamond Rd, Richmond BC V7E 1P3
Clayton Rubinstein	10180 St Vincent Place Richmond BC V7E 5R8
Shannon Willard	6031 Southgate Rd Richmond, BC V7A 4Z6
Ryker Gamble	4475 Gandy drive Richmond BC, V7E 2R7
Spencer Clark	7700 Ash Street Richmond BC
Danny Pedozo	5317 Knight St, Vancouver, BC. V7P 2T8
Darren Mann	2298 McZain Ave Van
Alex Lyckh	1234 Park St.
Julian Chan	#4-8191 Francis Rd. V6P 2A5
Shawn Dhalwal	11500 Seaton Rd. V7A-2G6
Nathan Hirayama	7711 Bridge St, V6Y 2S6
Daniel Olyvi	10000 11th St.
Kailey Dubiensi	319-5700 Andrews Rd.
Tina Eriksen	9777 Ashwood Dr.
Ryan Campbell	8780 Ashbrock est
Ranjit Atwal	4746 West crescent King Rd.
Cam Knowles	Vancouver, V6N 2E7 2555 V-33 A
Will Trant	7800 Belair Dr. Richmond BC V7A 1B8
Jennifer Wickham	

Steveston Japanese Fishermen's Hospital
Complex Preservation Project

Name	Address
Masao Shima	3204 Prince Edward St E Van
Kimiko Shima	610. EST 10TH A UWEKWE
Koji Gushiken	5432 Buchanan St. Burnaby V5B 2R7
Sumi Gushiken	" "
ETSUKO AZAMA	116 Adventure Rd Kelowna B.C.
MISAKO MIYAGI	45-7533 Heather St. Richmond V6V 2P8
Chiyoko Dora	1821 Boman Av CA
Miyoko Uchihara	#602 1880 Pinefree way COQUITLAM
TAKAKO IWAMA	1652 East 34th Van B.C. V6P 1A1
Teruko Satake	1358 E. 19th Ave. Vancouver B.C. V5V 1L5
Ruey Satake	" "
Jack Azama	116 Adventure Rd Kelowna B.C. V1Y 1N2
Sachiko Tsujimoto	5745 Lauk St. Burnaby B.C. V5G 1N4
Kathleen Park	3157 Colfax Cr. Vancouver B.C. V5S 4M1
HARU MIYAGI	29115 Hwy 1A/1A1 Abbotsford B.C. V5G 1T2
chiaki Miyagi	35402 Sandy Hill Rd Abbotsford B.C.
Soho Miyagi	35402 Sandy Hill Rd Abbotsford B.C. V6G 1S5
SESEN KAYO	2-3726 Commercial St. VAN. B.C. V5U 4A2
AMELIA KAYO	2-3726 Commercial St. VAN B.C. V5N 4G6

(19)

Steveston Japanese Fishermen's Hospital
Complex Preservation Project

Name	Address
Shigenori Takahashi	508-4769 Hazel St Burnaby BC V5H 1S7
Rumiko Takahashi	508-4769 Hazel St. BURNABY V5H 1S7
ASUKA TAKAHASHI	#508-4769 HAZEL ST V5H 1S7 BURNABY B.C.
Mitsuko King	37360 Minnow Blvd. Richmond B.C.
N. ISHIKAWA	5800 Plover Ct Richmond
T. OKUMA	1031 W. 47th Ave VAN B.C.
A. MIYAGI	111-8060 Jones Rd RMD. V6Y 4K5
R. MIYAGI	111-8060 Jones Rd RMD V6Y 4K5
NORIKO NAKADOMARI	5500 GARRISON ROAD, RICHMOND, V7C 2M2

(19)

Steveston Japanese Fishermen's Hospital
Complex Preservation Project

Name	Address
Mandy Klockow	151071 Northfield Rd, DND
MARISE MEREDICK	5431 WARRLER AVE RMD
Wendy Steadman	5520B Langtree Ave Richmond
Inene Pacey	4900 McLure Ave Rmd BC
Joyce Tasaka	3380 Broadway St Rmd BC
Kim Phang	22275 Garbutt Dr Rmd B.C
Louise Doi	3226 Regent St Rmd BC
Kunip mura	3371 Pleasant St Rmd BC
Jarod	3226 Regent St Rmd B.C.
CHERYL THORSTEINSON	12420 ALLIANCE DR RMD, BC
Sharon Wickham	2800 Belair Drive, Richmond B.C.
Alyson Wickham	7800 Belair Drive, Rmd
N. [unclear] (with Duke)	805-1333 Hara St, Vancouver, V6E 1G4
Nicole Laew	6438 Argus Dr. Van V6M 3P5
Michael Olson	2101 950 Cambie St V6B 5K6, Vancouver
Olga Zinchenko	2309-668 Citadel Parade Vancouver
Karen Wheatley	#78-8531 Bennett Rd. Richmond v6Y 3M7
Rob Gianchuk	2743 W. 4th Ave. Van, BC
Kadie Ferron	5631 Bennett Rd. #24 RICHMOND B.C. V6Y 3K7

Steveston Japanese Fishermen's Hospital
Complex Preservation Project

Name	Address
MRS & Mr. Tom Takeeda	8061 Menzies Ave B6Y
Tana Kajioka	9640 Bissett Pl. Rmd
Hiseko Kajioka	9640 Bissett Pl. Rmd
Miyuki Shimizu	5850 Fairchild Vancouver.
M. M.	9850 Francis Rd Rich
Eiko Tashiro	1601-621 W. 57th Ave. Van
Yukiko Basley	2561 Fleming St Van
Gwendolyn Haddock	10300 Newton St Vanc.

143

19

31

4

32

Steveston Japanese Fishermen's Hospital
Complex Preservation Project

Name	Address
Julie WAKITA	3430 Vale crt. N. VAN
Ruth Colee	313 Kings Court Port Moody
MICHAEL COLES	313 KINGS COURT Port Moody
TONY OKA	549 EAST 28 TH AVE. VAN BC
MASAO MIZUKAMI	#102 - 605 CLYDE AVE. WEST VANCOUVER BC
K. Mori	#202-2279 ST. Catherine St.
K. Egami	7781 Ontario St. Van. B.C.
Sumie Jimmie	2-7560-138 ST Surrey.
K. Osaka	308 PLEASANT ST VICTORIA
M. Hamanaka	37 - 8580 Jonval Curia Rd, Rich-
I. S. YAMAMOTO	11390 DALY PL., DELTA, B.C.
H. Hori	1122 W. 39 TH AVE Vancouver B.C.
T. Yamamoto	45299 Jasper Dr. Chilliwack BC
S. Ueyama	4291 Deerfield Ave. Ric B.C.
K. Hayer	202-8700 Jonval Rd. Richmond
J. Hagiwara	1403-6839 Station Hill Rd. Burnaby BC
S. Watanabe	8591 Steveston Hwy. Burnaby BC.
S. Matsu	450 6 TH AVE. DELTA B.C. VAN 112
David Morisawa	134 CARNIVAL PARKWAY Delta, B.C.

Steveston Japanese Fishermen's Hospital
Complex Preservation Project

Name	Address
AKIRA HORII	1122 W 39 TH AVE VAN.
Chigoko Morizawa	3817 Garry St. Rich
HENRY MURAI	3851 W. King Edward Ave Van
KATHY MURAI	" "
MARCO OKUBOCHI	1-4311 BAYVIEW ST RICH.
K. OZAWA	4466 PRICE CREEK BAY
S. OZAWA	" "
T. Tamaki	5451 MONCTON ST. RICH.
H. Okamoto	7712 KERR ST VAN.
KIYOSH UYAYAMA	#604 - 7995 Westminster Hwy RICH.
MIDORI HAMADE	8644 COOK RD RICH.
M. Minalo	46937 Quamy Rd. Chilliwack
T. MAEDA	3240 PLEASANT ST RICH
Y. KOYANAGI	3600 PLEASANT ST RICH
K. TANAKA	5520 MONCTON ST RICH
D. TANAKA-JONES	7630 MCKAY AVE BAY
S. WICKHAM	7800 BELAIR DR RICH.
YAEKO DOMAE	1200 NO 1 RD RICH
HAYASHI. Jimie	3280 RICHMOND ST RICH

(19)

(19)

(33)

Steveston Japanese Fishermen's Hospital Complex Preservation Project

A group of keen Steveston heritage enthusiasts, who are the descendants of pioneering Japanese Fishermen have garnered community and financial support to relocate and restore the Doctors' Administration Office, which was part of the original hospital complex. This historic building was built by the Steveston Japanese Fishermen's Benevolent Society, circa 1900.

The undersigned support the preservation of this, the most historical heritage building remaining in the Steveston/Richmond area. Its relocation to the Steveston Museum Site, will be with minimal environmental disruption leaving substantial open and green space on the site intact.

Name	Address
HARRY KISHI	#18-3111 BECKMAN PLACE RICHM
Eiji Tsuji	6950 MARINO. CO. BLY V5B 4S2
AKIKO TSUJI	6950 MARINO CRT. BBY V5B 4S2
H WAKABAYASHI	1279 EAST 35 AVE VANCOUVER
Kay Fuji-shima	4531 Colchester Dr. Richmond V7C 4S6
Tori DOMITANI	4120 TRIZLIN CRES RICHMOND
K. YANAGISAWA	520 WEST 20TH ST NORTH VANCOUVER
J TANAKA	3317 ROBERT ST VAN.
Mickey TAKEDA	3137 E. 14TH AVE VAN.
AKI TAMURA	1071 CITADEL PK. PT. COG.
Gentaro Shimizu	4921 WOODS WORTH ST. BBY
Handwritten signature	1877 STANLEY ST BBY
Handwritten signature	3276 ROYAL OAK BBY
Handwritten signature	358 FRANK RD RICH

Steveston Japanese Fishermen's Hospital Complex Preservation Project

Name	Address
H. Minato	6548 186TH ST SURREY
Kay Minato	"
Rumi Nakao	Richmond 4531 Colchester DR V7C 4S6
Guy Okada	"
Tokuaki Uema	Richmond 4531 Colchester DR
Hiko Fujishima	"
EIKICHI TANAKA	2845 ROSEMONT DR. VANCOUVER V5S 2C6
Fuji'o TAMURA	305 Stratford Ave. Burnaby V3B 3X7
KAZ TAKAHARA	202-2366 Wall St. Van, B.C. V5L 4Y2
TOM WATANABE	5145 HARDWICK ST. BBY V5G 1P8
KAYO AKAOKI	308-519-12th ST NEW WESTMINSTER B.C. V3M 6V9
Hiroko Kitayama	2828 E. 10th Ave. Vancouver
YOSHIMIRO MIKASA	17590 KENNEDY RD. PATT MERRIDGE
Hironori KAMOSHITA	10515 157th Surrey
Yoshimichi Kurokawa	7716 Lawrence Rd Bby
Keiko Maria Fuchiwaki	V7A 1G1 7428 Williams Rd Richmond BC
Yasumi Matsumaga	V7A 1E8 7451 Williams Rd Richmond BC
Mineko Gorni	V7A 1E8 7451 Williams Rd Richmond BC
Yukiko Moriwata	7145 Adair St. Bby V5A 1N6
Mary Bro.	3180 B 3RD. VAN. V5M 1J2
Bonnie Ishii	1116 CORNELL AVE. COG. V8T 2E7

145

(19)

(21)

Steveston Japanese Fishermen's Hospital Complex Preservation Project

A group of keen Steveston heritage enthusiasts, who are the descendants of pioneering Japanese Fishermen have garnered community and financial support to relocate and restore the Doctors' Administration Office, which was part of the original hospital complex. This historic building was built by the Steveston Japanese Fishermen's Benevolent Society, circa 1900.

The undersigned support the preservation of this, the most historical heritage building remaining in the Steveston/Richmond area. Its relocation to the Steveston Museum Site, will be with minimal environmental disruption leaving substantial open and green space on the site intact.

Steveston Japanese Fishermen's Hospital Complex Preservation Project

Name	Address
George Teranishi	1103-4398 Buchanan Bldg.
Mae Sakikawa	1890 Yewell Ave. Bky BC
RUSSELL TAMM	1116 CORNELL AVE Coa BC

Name	Address
Y. NAKATA	4383 W 12 TH VAN
AKIO MOMOTANI	2277 E 38TH AVE VAN
K. MAKIHARA	476-8025 Champlain W. Van
AMY MOMOTANI	2277 F 38th Ave. Van.
TAMOTSU SHIMIZU	5131 TURNER, ST. RMD V6V 2P8
MITSUWE SHIMIZU	5131 TURNER ST. RMD V6V 2P8
Kay MURAO	3806 HUNT ST RMD V7E 2K3
Ryan Murao	3806 Hunt St RMD V7E 2K3
Shiori FUKUE	2517 Kent Ave VAN
Kojiro	7807 Elliott St. Vancouver
Yukiko	7807 Elliott St. Vancouver
YOSHIOKI YABARA	5060 WILLIAMS RD RICH
CLARE SINGH	5060 WILLIAMS RD RICH
BONNIE CONNOLLY	MAPLE RIDGE

##

3

Steveston Japanese Fishermen's Hospital Complex Preservation Project

A group of keen Steveston heritage enthusiasts, who are the descendants of pioneering Japanese Fishermen have garnered community and financial support to relocate and restore the Doctors'/Administration Office, which was part of the original hospital complex. This historic building was built by the Steveston Japanese Fishermen's Benevolent Society, circa 1900.

The undersigned support the preservation of this, the most historical heritage building remaining in the Steveston/Richmond area. Its relocation to the Steveston Museum Site, will be with minimal environmental disruption leaving substantial open and green space on the site intact.

Name	Address
ALLAN MAYBEE	6927 CARMELIE ST Bby USB 146
Kazuo Maybiki	6927 Carmegie Ave Bby 456 146
KAZUE ERAMI	7781 ONTARIO ST VAN V5X3C6
TSUYOSHI MAKATSU	6180 ADA W.S. PL RICH V7C3W1
CHIZURU NAKATSU	"
KIYO E. YADA	3497 E. 49 AVE VAN B.C. V5S-1M2
CHRISTINA KANNO	6009 RUMBLE STREET Bby V5J 2G6
Roger Kanno	6009 Rumble St. Bby V5J 2C6
KIYO GOTU	#202-739 PRINCESS ST. NW. U3M 6V6
Blis Akene	18568 HARBOUR GATE - DR DELTA V4C 8C1
Tommy Ota	135 SPRING ST. NEW WEST BC U3M 1S5
Akihiro Nakahara	7892-165A ST. SURREY BC V4N 1N2

Steveston Japanese Fishermen's Hospital Complex Preservation Project

Name	Address
Toshiko Aoto	126 Spring St New West.
YUKKO SAKAKIBARA	702-165A ST. SURREY BC
Dickson	119-8060 - B.I.A. ST. SURREY
James Ohtani	13135-107 AVE SURREY
Rumi Kamachi	110 Spring St. New West.
Liz Kamachi	930 - Latten St New West.

Steveston Japanese Fishermen's Hospital
Complex Preservation Project

Name	Address
OKAWA SARAKO	
Reiko Suda	307-6677 Southoaks - Burnaby
SATORU YADA	3492 E. 49 th AVE. VAN. BC V7C 4S6
Kay Fujishima	4531 Colchester DR RMD
Fumio Taira	#2002, 121-1016 St New Westminster BC
Kyoko Jackson	1207-6611 Southoaks Cres Burnaby
Josie MATSURA	903-5652 AMERSON AV Burnaby
Mrs. O.	7658 ROYAL OAK AVE, B.C.
J. Fujinami	7658 ROYAL OAK AVE, BOX
Wallace Kanno	1015 Delestre Ave Coq. B.C.
HISAKO UYENO	#304-2566 GENERAL CURRIE Richmond

Steveston Japanese Fishermen's Hospital
Complex Preservation Project

A group of keen Steveston heritage enthusiasts, who are the descendants of pioneering Japanese Fishermen have garnered community and financial support to relocate and restore the Doctors' Administration Office, which was part of the original hospital complex. This historic building was built by the Steveston Japanese Fishermen's Benevolent Society, circa 1900.

The undersigned support the preservation of this, the most historical heritage building remaining in the Steveston/Richmond area. Its relocation to the Steveston Museum Site, will be with minimal environmental disruption leaving substantial open and green space on the site intact.

Name	Address
MAEDA SACHIKO	5260 MONCTAN ST RICHMOND
KANNO YAKO	6604 NOLAN ST BURNABY, B.C.
SHIGERU KUMABARA	#1010-7258 ACORN AVE BURNABY B.C.
Rae Kawabara	1010 7288 ACORN AVE Burnaby
WES TSUCHIYA	657 GIRARD AVE - COO
MICHIKO SUTO	
Eiji Tamai	6677 SOUTH OAKS CRES,
MIYUKI AZUMI	2419 E 26TH AVE VAN BC
CHIHARU KANO	11909-98A AVE, SUPPLY
Michiko Sakai	#208-4449 Imperial ST, BC
YASU Kobayashi	6680 South OAKS Cres Burnaby B.C.
Yuko Lien	6680 Southoaks Cres. Burnaby

148

(11)

(12)

Steveston Japanese Fishermen's Hospital Complex Preservation Project

A group of keen Steveston heritage enthusiasts, who are the descendants of pioneering Japanese Fishermen have garnered community and financial support to relocate and restore the Doctors'/Administration Office, which was part of the original hospital complex. This historic building was built by the Steveston Japanese Fishermen's Benevolent Society, circa 1900.

The undersigned support the preservation of this, the most historical heritage building remaining in the Steveston/Richmond area. Its relocation to the Steveston Museum Site, will be with minimal environmental disruption leaving substantial open and green space on the site intact.

Name	Address
ED GOTO	111 PRICE ST. NEW WEST, BC.
DON SEKI	21555 120 RYAN AVE M.F.
Junio Kano	6604 Melant Burnaby, BC.

Steveston Japanese Fishermen's Hospital Complex Preservation Project

A group of keen Steveston heritage enthusiasts, who are the descendants of pioneering Japanese Fishermen have garnered community and financial support to relocate and restore the Doctors'/Administration Office, which was part of the original hospital complex. This historic building was built by the Steveston Japanese Fishermen's Benevolent Society, circa 1900.

The undersigned support the preservation of this, the most historical heritage building remaining in the Steveston/Richmond area. Its relocation to the Steveston Museum Site, will be with minimal environmental disruption leaving substantial open and green space on the site intact.

Name	Address
Shuzo Yano	25-13912 50 Ave Surrey
Keisyo Yano	25-13918 50 Ave Surrey
Wendy Lee	#37-6577 Southoaks Cres. Bby V5E 4J9
Doug Suto	7307-146 A St. Surrey
Ray Suzuki	4860 Hamelat Dr Richmond V7C 4S2
Takichi Okawa	12006 Acadia St. Maple Ridge V2X 3B3
Mitsuyo Okawa	"
Jim Kobayashi	1257 Muggel St, Port Coquitlam V3C 5E2
Ray Okawa	#219-7531 Merivale Blvd Rich V6C 1M8
Saki Miyashita	10-1050 Cecile Dr Port Moody V3H 1K8

3

10

Steveston Japanese Fishermen's Hospital Complex Preservation Project

A group of keen Steveston heritage enthusiasts, who are the descendants of pioneering Japanese Fishermen have garnered community and financial support to relocate and restore the Doctors'/Administration Office, which was part of the original hospital complex. This historic building was built by the Steveston Japanese Fishermen's Benevolent Society, circa 1900.

The undersigned support the preservation of this, the most historical heritage building remaining in the Steveston/Richmond area. Its relocation to the Steveston Museum Site, will be with minimal environmental disruption leaving substantial open and green space on the site intact.

Name	Address
<i>[Signature]</i>	V3V6P2 9301-123 ST. SURREY B.C.
<i>Morjawa</i>	10531 Seahaven Dr. Richmond, B.C.

Steveston Japanese Fishermen's Hospital Complex Preservation Project

A group of keen Steveston heritage enthusiasts, who are the descendants of pioneering Japanese Fishermen have garnered community and financial support to relocate and restore the Doctors'/Administration Office, which was part of the original hospital complex. This historic building was built by the Steveston Japanese Fishermen's Benevolent Society, circa 1900.

The undersigned support the preservation of this, the most historical heritage building remaining in the Steveston/Richmond area. Its relocation to the Steveston Museum Site, will be with minimal environmental disruption leaving substantial open and green space on the site intact.

Name	Address
<i>Mitsuhito</i>	802-6677 SOUTHDAKES CRES RICHMOND B.C. V6V 4K3
<i>Naoko Oikawa</i>	8151 149 St. Surrey, B.C. V3S 8A3
<i>Hiroki Oikawa</i>	11729 82 B. Ave. Delta B.C.
<i>Fah Onodera</i>	4247 SKYLINE DRIVE, N. VAN. B.C. V7R3G9
<i>S. Sakurai</i>	124 16080 82 ND AVE SURREY B.C.
<i>S. Murakami</i>	1921 84 A AVE. SURREY
<i>K. I. Onodera</i>	4247 SKYLINE DR. N. VAN. V7R3G9
<i>Larry Onodera</i>	19396 -71 AVE. SURREY B.C.
<i>H. Suzuki</i>	7950 - 229 ST LANGLEY B.C.
<i>George NANCY MURAKAMI</i>	12038 57 TH AVE SURREY B.C.
<i>Nancy Murakami</i>	12038 57 TH AVE SURREY B.C.

(2)

(11)

Steveston Japanese Fishermen's Hospital Complex Preservation Project

A group of keen Steveston heritage enthusiasts, who are the descendants of pioneering Japanese Fishermen have garnered community and financial support to relocate and restore the Doctors' Administration Office, which was part of the original hospital complex. This historic building was built by the Steveston Japanese Fishermen's Benevolent Society, circa 1900.

The undersigned support the preservation of this, the most historical heritage building remaining in the Steveston/Richmond area. Its relocation to the Steveston Museum Site, will be with minimal environmental disruption leaving substantial open and green space on the site intact.

Name	Address
SAM KONDO	8111 McBURNEY CRT. RICH. B.C. V6Y3H
KAORU KONDO	=
SOFIA MORISHITA	2015 W. 14 th Ave. Van. V6S2K3
ELMER MORISHITA	2015 W. 14 th AVE VANC. V6J2K3
KENT SUZUKI	461-151 West 2 nd St. N. VAN. V7M3P
Masa Ikuta	602-1510 West 1st Ave. Vancouver V6J4S.
Jolian Miles	11071 BIRD RD RICHMOND
Juan Gutierrez	6320 SWIFT AVE RICH. V7E4H1
Paul Johnson	6320 SWIFT AVE RICH. V7E4H1
W. Lyon	5833 Grove Ave. Delta. V4K-2B3
Ken Yamashiro	3720 Hurd, Rich. V7E2M3
Sue Yamamoto	#8-1871 FRANCIS RD. V6Y3M3.
EIKO AKIZUKI	11960 KINGDALE DR. RICHMOND.

(13)

Steveston Japanese Fishermen's Hospital Complex Preservation Project

Name	Address
R. Osaki	8160 GILBERT RD RICH.

(1)

151

Steveston Japanese Fishermen's Hospital Complex Preservation Project

A group of keen Steveston heritage enthusiasts, who are the descendants of pioneering Japanese Fishermen have garnered community and financial support to relocate and restore the Doctors' Administration Office, which was part of the original hospital complex. This historic building was built by the Steveston Japanese Fishermen's Benevolent Society, circa 1900.

The undersigned support the preservation of this, the most historical heritage building remaining in the Steveston/Richmond area. Its relocation to the Steveston Museum Site, will be with minimal environmental disruption leaving substantial open and green space on the site intact.

Steveston Japanese Fishermen's Hospital Complex Preservation Project

Name	Address
<i>Clay Young</i>	<i>107-4100 Chatham St.</i>

Name	Address
<i>STAN COLLETT</i>	<i>138 7451 MINORU BLVD.</i>
<i>ALBE MAHMY</i>	<i>402 4600 Westwater</i>
<i>JOANNE MOLO</i>	<i>RICHMOND.</i>
<i>TANNA ASCH</i>	<i>VAN.</i>
<i>POPE KASLOW</i>	<i>#210-3571 Chatham Richmond</i>
<i>Mark Bodby</i>	<i>*1-7460 MOLLAT.</i>
<i>Debra Jones</i>	<i>2-10900 SPRINGMOUNT DR RMD.</i>
<i>B. J. Jones</i>	<i>PRIMA TON BC</i>
<i>JOHN JONES</i>	<i>Pt Renfrew BC</i>
<i>Gloria Jones</i>	<i>Road, BC</i>
<i>Jack Sheppard</i>	<i>Rich, B.C</i>
<i>D. Stone</i>	<i>402 1590 W 1ST AVE</i>
	<i>YANIC B.C</i>
	<i>D.W. St</i>

(13)

(1)